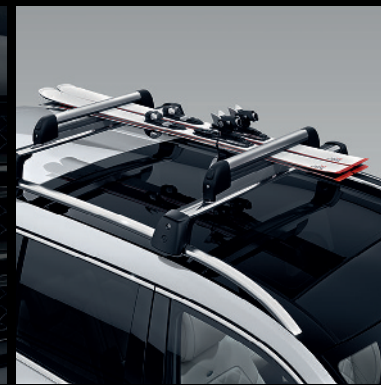


Genuine Accessories

GLS and GL



Mercedes-Benz





Exterior



Interior

Safety and Quality.

At Mercedes-Benz the vision of accident-free driving is paramount. Because where Mercedes-Benz vehicles are concerned, we take the same uncompromising approach to safety as we do to driving pleasure. There are no compromises when it comes to developing the range of Genuine Accessories either. Perfectly tailored to your vehicle and extensively tested by our engineers, the products not only make an active contribution to your safety but also protect other road users.

The star logo has always signified allure, perfection and responsibility – attributes which are also reflected in the quality of our accessories, all of which further enhance our vehicles' style or sportiness – not to mention their already outstanding comfort. That special sense of design, zeitgeist and attention to detail make a vehicle a true Mercedes-Benz. From that first outward impression to the inner attributes. Quality you can sense just by looking, listening, touching – and of course driving.



Cargo & Care AMG

Contents.

04 | Exterior

06 | Light-alloy wheels

10 | Wheel accessories

12 | Add-on parts

14 | Interior

16 | Telematics

20 | Interior

22 | Child safety

24 | Cargo & Care

26 | Carrier solutions

30 | Interior stowage

32 | AMG

32 | AMG accessories

34 | AMG light-alloy wheels

Please note: some of the products shown here are only available for the GL, manufactured up until 12/15, while others are only available for the GLS, manufactured from 01/16. Any such restrictions will be indicated where applicable.



01

02

03

Exterior.

When unbridled power and boundless confidence combine, the result is a big personality. Be the star of the show, wherever you're headed – with unique exterior accessories for your GLS you can't fail to make a big impression.

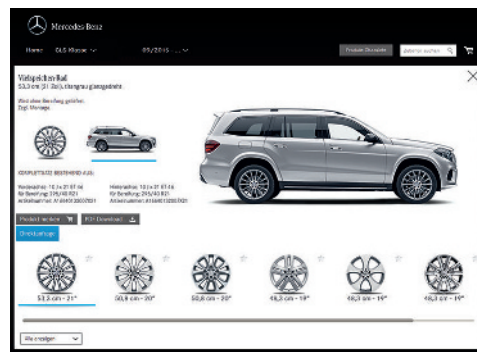
01 10-spoke wheels.	6
02 Door handle recesses.	13
03 Illuminated running boards.	13



An even more powerful look. Genuine wheels.

			Item number	
01	5-twin-spoke wheel.	Finish: titanium silver.	Wheel: 8.5 J x 20 ET 62 Tyre: 275/50 R20	A166 401 1402 9765
02	10-spoke wheel.	Finish: himalaya grey, high-sheen.	Wheel: 8.5 J x 20 ET 62 Tyre: 275/50 R20	A166 401 3400 7X21
03	10-spoke wheel.	Finish: himalaya grey, high-sheen.	Wheel: 8.5 J x 20 ET 62 Tyre: 275/50 R20	A166 401 2802 7X21
04	10-spoke wheel.	Finish: black, high-sheen.	Wheel: 8.5 J x 20 ET 62 Tyre: 275/50 R20	A166 401 2802 7X23

Because of differences in national regulations, various different versions of each vehicle exist. Please also bear in mind that vehicle development is permanently ongoing. As a result, not all of the wheel/tyre combinations shown in this brochure will be approved for your particular Mercedes-Benz. Your Mercedes-Benz partner has access to constantly updated information on every Mercedes-Benz wheel, including the relevant technical inspection findings and licensing conditions, and will be happy to advise you.



Choose your favourite wheels online. Our Accessories Configurator shows you at a click of the mouse how the various Mercedes-Benz light-alloy wheels will look on your vehicle. Visit our website at <http://configurator.mercedes-benz-accessories.com>.

Light-alloy wheels are supplied without tyres, wheel bolts, valve caps or hub caps. Any necessary assembly may incur additional costs.



50.8 cm | 20" 01 02 50.8 cm | 20"
50.8 cm | 20" 03 04 50.8 cm | 20"





48.3 cm | 19" | 01
48.3 cm | 19" | 02



48.3 cm | 19" | 03 04



48.3 cm | 19"



45.7 cm | 18" | 05 06



45.7 cm | 18" | 07 08



				Item number
01	5-twin-spoke wheel.	Finish: titanium silver.	Wheel: 8.5 J x 19 ET 62 Tyre: 275/55 R19	A166 401 1302 9765
02	7-spoke wheel.	Finish: himalaya grey, high-sheen.	Wheel: 8.5 J x 19 ET 62 Tyre: 255/50 R19	A166 401 2902 7X21
03	5-spoke wheel.	Finish: vanadium silver.	Wheel: 8.5 J x 19 ET 62 Tyre: 275/55 R19	A166 401 3000 7X45
04	5-twin-spoke wheel.	Finish: titanium silver.	Wheel: 8.5 J x 19 ET 62 Tyre: 255/50 R19	A166 401 1702 9765
05	10-spoke wheel.	Finish: titanium silver.	Wheel: 8 J x 18 ET 56.5 Tyre: 265/60 R18	A166 401 1102 9765
06	10-spoke wheel.	Finish: titanium silver.	Wheel: 8 J x 18 ET 56.5 Tyre: 265/60 R18	A166 401 1202 9765
07	7-twin-spoke wheel.	Finish: titanium silver.	Wheel: 8 J x 18 ET 56.5 Tyre: 265/60 R18	A166 401 1502 9765
08	7-spoke wheel.	Finish: titanium silver.	Wheel: 8 J x 18 ET 56.5 Tyre: 255/55 R18	A166 401 1602 9765

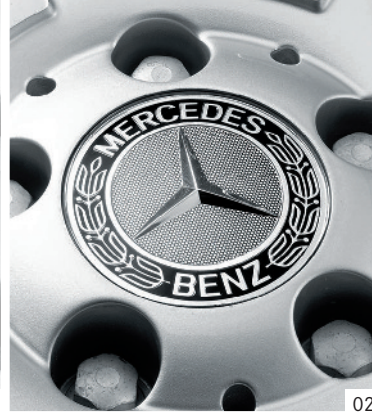
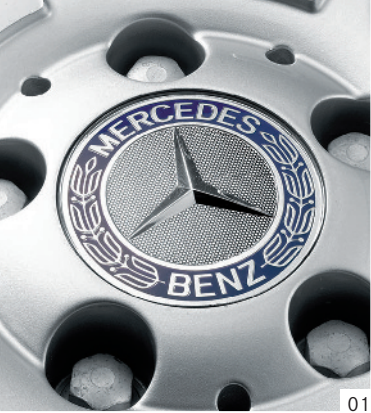
Light-alloy wheels are supplied without tyres, wheel bolts, valve caps or hub caps.
Any necessary assembly may incur additional costs.

Even more distinctive design. Wheel accessories.

	Item number
Hub caps. Protect the hub from dirt. Available in the following versions:	
01 roadster design, blue.	A171 400 0125 5337
02 roadster design, black.	A171 400 0125 9040
03 roadster design, grey.	A171 400 0125 7P70
04 himalaya grey with chrome star.	A220 400 0125 7756
05 black with chrome star.	B6 647 0200
06 matt black with chrome star.	A220 400 0125 9283
RUDmatic snow chain, with grip links not pictured. Luxury, easy-fit snow chain. Top test results with regard to traction, stopping distances, smoothness, lateral stability and durability.	B6 755 0030
07 Mud flaps¹. Protect the underbody and sides of the vehicle from loose chippings and dirt. Available in pairs for front or rear axle. Black, grained.	
Front set, black.	A166 890 0178
Front set, black, with running board.	A166 890 0578
Rear set, black².	A166 890 1100
Rear set, black³.	A166 890 0378
08 Black valve caps, set of 4. Stylish highlights in a new design. Protect the valves from dirt.	B6 647 2002
09 Black rim locks. Protect your valuable light-alloy wheels from theft. Set of coded key and four locking bolts.	A001 990 1707
10 Vehicle tool kit. Everything you need to change a wheel. All handily stored in a compact bag.	A166 580 0400
Tyre pressure monitor not pictured. Allows you to carry out a quick tyre pressure check on the road or at home. Supplied with leather pouch.	B6 658 8140

¹ Not for AMG model variants. ² Product is only available for the GLS. ³ Product is only available for the GL.

Any necessary assembly may incur additional costs.





03



01 04

05



02



An even more polished appearance. Genuine add-on parts.

	Item number
01 Illuminated Mercedes star. Let your star shine. Thanks to fibre-optic cables and LED technology, the central star emblem in your Mercedes' radiator grille lights up when you remotely lock/unlock the vehicle or open the door or tailgate. Only functions when engine is switched off. Not in conjunction with DISTRONIC (Code 233). For models with central star emblem.	
Trim part, chrome¹.	A166 817 3000
Trim part, chrome².	A166 817 0316
Control unit, black.	A166 900 2808
Wiring harness, black. Wiring harness for illuminated Mercedes star.	A166 820 1513
Contact bridge.	A000 546 1366
02 LED Mercedes star projectors, set of 2³. For the exit lamps in the side doors.	A166 820 5900
03 Fin attachments for bonnet. Eye-catching high-sheen chromed trim. 6-piece set for the air intakes in the bonnet.	A166 880 0082
04 High-sheen chromed door handle recesses, set of 4. High-sheen door handle recesses in chrome design. Protect the recess behind the door handle from scratches and offer a high-quality, individual look.	A166 760 0000
05 Illuminated running boards. The aluminium-look illuminated running boards are a real eye-catcher. They are mounted at the height of the side skirts and make it easier to get into the vehicle, front and rear. Rubber studs increase safety by helping to prevent slipping.	A166 520 0231



Discover a very special extra – the illuminated Mercedes star – and make a sparkling impression as the evening draws in.

¹ Product is only available for the GLS. ² Product is only available for the GL. ³ Not for vehicles with Code P49 (Mirror package).

Any necessary assembly may incur additional costs.

Interior.

Create your own ideal comfort zone – packed with features that surpass even the highest expectations. All that counts is your personal interpretation of comfort and convenience – achieved with exclusive highlights for a luxurious interior.

01	Garmin® MAP PILOT.	17
02	“BABY-SAFE plus II” child seat.	22



01



02



An even more stress-free experience. Mercedes-Benz telematics.

	Item number
01 Garmin® MAP PILOT^{1,2} . Transforms your Audio 20 radio into a high-performance navigation system with 3D map views. Garmin® MAP PILOT uses the standard-fit 17.8 cm colour TFT display and can be conveniently operated via the vehicle's Controller and the Audio 20 keypad. Available for a wide range of countries. For details and the latest updates, visit the Mercedes-Benz Shop at http://shop.mercedes-benz.com .	A218 906 4501
02 iPad® Docking Station for rear compartment . The mount, which can be tilted and rotated, allows you to position your iPad® to suit your requirements, vertically or horizontally. All of your device's controls remain fully accessible. The mount and the supplied protective film for the device's screen enhance crash safety. The film also helps prevent the display from being scratched. The mount is very easy to fit to the head restraints without the use of tools. Simply slide the iPad® into the mount until it latches securely into place. Integral charging option – connect commercial charger to 12 V socket.	
For iPad® 4.	A205 820 6500
For iPad® Air.	A205 820 7400
For iPad® Air 2.	A205 820 2301
iPad® Docking Station for rear compartment not pictured. The ergonomic, crashproof Docking Station introduces the iPad® and all of its familiar functions to your Mercedes-Benz. All connections, e.g. for your headphones or charging cable, remain accessible. The mount is fitted to the head restraint and can be tilted and rotated through 90 degrees. Available for iPad® 2 and iPad® 3.	A218 820 1176
03 Rear Seat Entertainment System, black³ . This elegant DVD system allows the rear passengers to watch DVDs, look at their favourite pictures and even play video games on two superb, tilting 17.8 cm colour screens. Keeping them entertained during your journey – and outside the vehicle, as the monitors can be removed from the mount with a click and used anywhere with the aid of the 230 V/12 V mains adapter provided. The AV-IN connection and the USB, SD card and AUX interfaces allow other storage media to be used too. A separately available video cable allows users to watch videos or view images from external sources. Supplied with two sets of infrared headphones and a remote control. The crashproof, theft-protected docking stations are firmly attached to the seat. Also available as a single monitor set.	A166 870 0796
Europe navigation update for Garmin® MAP PILOT¹ not pictured.	on request
Media Interface consumer cable kit not pictured. Control your iPod®, your iPhone® or other devices with a micro USB connection via the multifunction steering wheel or your audio system. For further information, go to www.mercedes-benz.com/connect .	
For GLS (can also be fitted without Code 355).	A222 820 8800
For GL (only in conjunction with Code 518).	A166 827 0201

¹ Product is only available for the GLS. ² Requirement: pre-installation for Garmin® MAP PILOT, Code 355. ³ The system is designed to be retrofitted in your Mercedes-Benz – no factory-fitted pre-installation required. Only in conjunction with Code 866.

Any necessary assembly may incur additional costs.

	Item number
01 Mercedes-Benz Bluetooth® (SAP)¹ telephone module². The telephone module ensures that the multimedia system has a fast, stable and secure internet connection via the integral UMTS module and the direct link to the vehicle's external aerial. You can simultaneously talk on the phone, use Mercedes-Benz Apps and have your text messages read aloud. The telephone module can be used as a permanently installed telephone or as a data modem with all of the functions of Code 386: it is operated via your multimedia system and uses the personal contact details on your mobile's SIM card. With USB interface for power supply. The telephone module can be operated via the SIM card in your mobile phone or by inserting a SIM card directly into the module.	A212 906 6303
02 Universal smartphone holder². The universal smartphone holder allows you to use a variety of different phones in conjunction with the vehicle's external aerial. The size of the holder can be altered at the upper and lower edge to offer the optimum fit for each smartphone. The holder is fitted to the pre-installation in the centre console as normal and the smartphone is connected to the audio system via Bluetooth®. The inductive aerial in the holder, together with the connection to the external aerial, ensures optimum reception during phone calls or when using the internet. Separately available charging cables with micro USB or Lightning connectors allow you to charge your smartphone in conjunction with the universal smartphone holder. These cables have a specially shaped plug which is ideal for use in your vehicle's centre console. A list of currently supported phones can be found at www.mercedes-benz.com/connect .	A222 820 6401
Charging cable with micro USB connector not pictured.	A222 820 6601
Charging cable with Lightning connector not pictured.	A222 820 6701
Mobile-phone holders³ not pictured. When it comes to selecting a mobile phone for your Mercedes-Benz, you've never had so much choice. A simple click! is all it takes to replace the mobile-phone holder. It takes a matter of seconds and is as straightforward as inserting the mobile into the holder itself. Changing your mobile and even alternating between different models of mobile no longer presents a problem. Enjoy the advantages of Convenience Telephony to the full. Holders are available for a range of popular mobiles. A list of currently supported phones can be found at www.mercedes-benz.com/connect .	
e.g. for iPhone® 5.	A212 820 0200

¹ SAP (SIM Access Profile) allows the module to read your mobile's SIM card. ² Only in conjunction with Convenience Telephony or Universal Telephony package (Code 386). ³ Product is only available for the GL and in conjunction with Convenience Telephony (Code 386).

Any necessary assembly may incur additional costs.



01 02
02

Telephone module +
SIM



Telephone module +
mobile phone





02

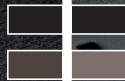


03 04



01 05

06 07



08



Even more comfortable surroundings. Interior accessories.

	Item number
Style & Travel Equipment ¹ . These head restraint elements are simple to fit and remove. The modular system centres around a base support which can be combined with the product of your choice – coat hanger, universal hook or folding table.	
01 Base support.	A000 810 3300
02 Coat hanger.	A000 810 3400
03 Universal hook.	A000 814 0000
04 Folding table.	A000 816 0000
05 Illuminated door sill panels, white illumination ² . A distinctive, eye-catching accessory, whether in daylight or at night – thanks to brightly illuminated Mercedes-Benz lettering, set in an elegant ground stainless steel panel.	on request
CLASSIC velour mats. Elegant, high-quality tufted velour mats, featuring metal badge with Mercedes-Benz lettering.	
06 Set of 4, black.	A166 680 0048 9F87
Set of 4, espresso brown ³ .	A166 680 0048 8T47
3rd row of seats, set of 2, black.	A166 680 6600 9F87
3rd row of seats, set of 2, espresso brown ³ .	A166 680 6600 8T47
CLASSIC floor mat trays. Made of robust, washable plastic to cope with the greatest demands. Covers the entire footwell. The raised edges and structured surface help keep the floor clean and dry. With distinctive Mercedes-Benz lettering.	
07 Set of 3, black.	A166 680 3501 9051
Set of 3, mocha brown.	A166 680 3501 7J07
3rd row of seats, single, black.	A166 684 1600 9051
3rd row of seats, single, mocha brown.	A166 684 1600 7J07
08 Sports pedals in stainless steel. High-sheen stainless steel pedals with non-slip stud panel.	A166 290 2601

¹ Only for vehicles with head restraint posts. Not for vehicles with Code 864 (Rear Seat Entertainment System). ² Available from 3rd quarter of 2016. ³ Product is only available for the GLS.

Any necessary assembly may incur additional costs.

Even more on-board protection. Child safety.

If your seat features automatic front passenger airbag deactivation (optional extra Code U10), the front passenger airbag is automatically deactivated when a child seat is fitted to the front passenger seat. All child seats can also be used without the ISOFIX attachment system.

Mercedes-Benz child seats are available in the “Limited Black” design. The covers are washable and very hardwearing. Replacement headrest covers are available for the “BABY-SAFE plus II”, “DUO plus” and “KIDFIX” child seats in chilli red and flannel grey.

	Item number
01 “KIDFIX” child seat. Booster seat for optimum side-impact protection, with height-adjustable backrest. In addition to the 3-point seat belt, the “KIDFIX” child seat is secured using the ISOFIT attachment system. For children between the ages of around 3.5 and 12 (15 to 36 kg).	A000 970 3800 9H95
02 “DUO plus” child seat. Optimum safety for children between the ages of around 9 months and 4 years (9 to 18 kg). Fitted as standard with top tether, an additional belt for securing the head section, a height-adjustable harness, ventilation channels and ISOFIX attachment points. Adjustable tilt.	A000 970 3700 9H95
03 “BABY-SAFE plus II” child seat. Deep, moulded seat design offers extra side-impact protection for optimum safety. Special padding, designed to protect particularly vulnerable body areas of children up to around 15 months (up to 13 kg).	A000 970 3600 9H95
Headrest cover. For “KIDFIX” child seat.	
04 chilli red	A000 970 0256 3E16
05 flannel grey	A000 970 0256 7N37
Headrest cover not pictured. For “DUO plus” child seat.	
chilli red	A000 970 0356 3E16
flannel grey	A000 970 0356 7N37
Headrest cover not pictured. For “BABY-SAFE plus II” child seat.	
chilli red	A000 970 0156 3E16
flannel grey	A000 970 0156 7N37



3.5 to
12 years

9 months
to 4 years

15 to 36 kg

9 to 18 kg

01 02



03 04 05

up to
15 months

up to 13 kg





01

02

03

Cargo & Care.

Room for even more excitement and adventure. Whatever life has in store for you, you can rely on our precision-tailored transport solutions. Whether you're aiming for the top or things are a little rocky, it's good to know you've got everything safely stowed away.

01 Alustyle Easy-Fix II basic carrier bars for roof rails.	26
02 Roof box 450, black metallic.	26
03 Rear-mounted bicycle rack.	29



Even more elegant stowage. Genuine transport solutions.

	Item number
01 Alustyle Easy-Fix II basic carrier bars for roof rails. Aluminium carrier bars, precision-tailored to the body of your Mercedes-Benz – the perfect basis for a range of Mercedes-Benz transport accessories: ski and snowboard rack, bicycle rack or roof boxes. Fitted in next to no time without the use of tools, thanks to new, innovative quick-grip fasteners. Aerodynamic Mercedes-Benz design with optimised noise level. Crash-tested. Lockable.	A166 890 1493
Transport and stowage bag not pictured. Robust bag, made from high-quality nylon fabric. Protects your carrier bars when stowing or transporting them.	A000 890 0111
Mercedes-Benz roof boxes. An aerodynamic design, tailored to your Mercedes-Benz. In extremely durable material. Designed for quick, optimised attachment to the basic carrier bars for roof rails. Particularly convenient loading and unloading thanks to the option of double-sided opening. Lockable from both sides.	
02 Mercedes-Benz roof box 330, matt silver. Capacity approx. 330 litres. Maximum load capacity 50 kg ¹ .	A000 840 0400
03 Mercedes-Benz roof box 400. Capacity approx. 400 litres. Maximum load capacity 75 kg ¹ . Handle strip for easier opening and closing.	
black metallic	A000 840 0000
matt silver	A000 840 0100
04 Mercedes-Benz roof box 450. Capacity approx. 450 litres. Maximum load capacity 75 kg ¹ . Handle strip for easier opening and closing.	
black metallic	A000 840 0300
matt silver	A000 840 0200
05 Ski rack insert. Insert for securing your skis – precision-tailored to the internal dimensions of the roof box.	
For roof box 330. A secure hold for up to 3 pairs of skis ² .	A000 840 4718
For roof box 400. A secure hold for up to 4 pairs of skis ² .	A000 890 2193
For roof box 450. A secure hold for up to 5 pairs of skis ² .	A000 840 4818
06 New Alustyle ski and snowboard rack, Comfort. For up to 6 pairs of skis ² or 4 snowboards. Lockable. Practical pull-out function makes loading and unloading easier.	A000 890 0393
07 New Alustyle ski and snowboard rack, Standard. For up to 4 pairs of skis ² or 2 snowboards. Lockable.	A000 890 0493

¹ Please bear in mind your vehicle's permissible roof load. ² Subject to geometry of skis.

Any necessary assembly may incur additional costs.



01 05



02  50 kg'

03  75 kg'

04  75 kg'



Boxes open on both sides for convenient loading and unloading.



06
07





01
02



03 04



Even more stylish cycling. Genuine bicycle racks.

	Item number
01 Rear-mounted bicycle rack for trailer coupling, folding. Easy-to-use, lockable rear-mounted bicycle rack, designed to provide secure transport for 2 or 3 cycles. Extremely simple to fit to the trailer coupling. Securing your bikes on the rack is equally simple. Maximum payload of up to 30 kg per rail, making rack suitable for most ebikes. An ingenious roller mechanism means that the load compartment can still be opened. The rack is easy to fold for space-saving stowage in the load compartment, at your holiday accommodation or at home.	
For 2 cycles.	A000 890 0300
For 3 cycles.	A000 890 0400
02 New Alustyle bicycle rack¹. Extremely lightweight bicycle rack, designed to be attached to the basic carrier bars for roof rails. Cycles can either be attached to the rack once it is in place on the roof or before it is fitted. Support frame folds down when not in use to reduce drag when travelling without cycles. Suitable for cycles with a max. frame diameter of 98 mm (circular frame tubes) or 110 x 70 mm (oval frame tubes).	A000 890 0293
03 Adapter for trailer. For connecting 13-pin trailer socket to 7-pin plug.	A000 821 1856
04 Trailer coupling. Fully automatic folding trailer coupling, specifically for Mercedes-Benz vehicles. High corrosion protection. Maximum drawbar load 140 kg.	on request

¹ Please bear in mind your vehicle's permissible roof load.

Any necessary assembly may incur additional costs.

	Item number
01 Deep boot tub, black. Deep edge all round. Made from flexible, impact-resistant plastic. Suitable for transporting foodstuffs.	A166 814 0341
02 Shallow boot tub, black. Made from impact-resistant, non-slip polypropylene. Suitable for transporting foodstuffs. Structured surface holds separately available stowage crate in place. Vehicle's load-securing rings remain accessible.	A166 814 0241
03 Stowage crate, black. A secure hold for items which are liable to tip over or slide around. Optimum functionality only in conjunction with shallow boot tub.	A000 814 0041
04 Collapsible shopping crate, anthracite.	A203 840 0020
05 Snap-in module for the load compartment. Partition your load compartment to suit your requirements and prevent the contents from sliding around. The brackets can be freely positioned along the outer edges of the load compartment floor. The system's telescopic frame provides a secure hold. Factory-fitted pre-installation (Code 942) is not required.	A166 860 0034
Extension kit. With the extension kit for the snap-in module for the load compartment in place, concertina bags can be fitted in the load compartment without pre-installation of the load-securing rails (optional extra Code 942).	A166 860 0751
06 Tie-down strap, black. Adjustable strap with fastener – ideal for securing items to the load-securing rings.	A000 890 0294
07 Luggage net, load compartment floor, black. Prevents lightweight objects from sliding around during the journey. In pocket format.	A212 868 0374
08 Coolbox. Not only cools but warms too. Cools to up to 20°C below ambient temperature – to max. -2°C. Can be switched to warming function. 24 litres. Can be connected to 12 V socket in vehicle or to 230 V power source via separately available rectifier.	A000 820 4206
09 Rectifier. Allows the coolbox to be connected to a 230 V socket at home.	A000 982 0021
10 Concertina load sill protector, black. Protects the rear of the vehicle from scratches when you're loading up – and prevents dirt from the vehicle from getting onto your clothes. Practical design – can be secured to shallow boot tub or reversible mat.	A253 693 2000
11 Reversible mat, black. With one high-quality velour side and one non-slip side. Helps keep the original floor of the load compartment clean. Can be connected to concertina load sill protector.	A166 680 0246
12 Charger with trickle charge function.	
5 A¹. Checks, charges and revives your battery – even if it's totally flat. Tailored to your vehicle's complex electronic systems.	A000 982 3021
25 A. This variant offers a faster charging process and a selection of different charging modes.	A000 982 0321
13 Fluorescent jacket, compact. This fluorescent yellow jacket makes you more visible to others.	A000 583 3500

¹ For ECE, except UK and Switzerland.

Any necessary assembly may incur additional costs.



01



02 03 04



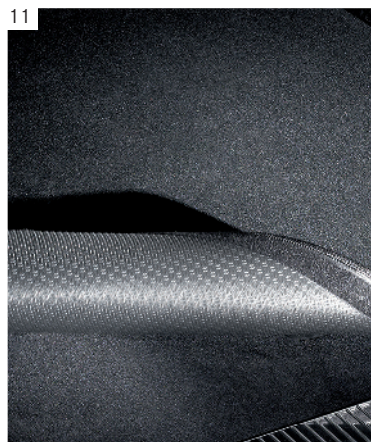
05 06



10 11



07 08 09



12 13





01
02 03



An even sportier edge. AMG genuine accessories.

		Item number
	AMG bodystyling¹. A sporty exterior for your GLS. AMG bodystyling comprises front apron and rear apron.	
	Front apron. For vehicles without Active Parking Assist.	A166 880 0102
01	Front apron. For vehicles with Active Parking Assist.	A166 880 0202
	Rear apron. For vehicles without Active Parking Assist.	A166 880 0302
02	Rear apron. For vehicles with Active Parking Assist.	A166 880 0402
03	AMG door sill panels. In brushed stainless steel. Set of 2 with white LED illumination (front only).	A166 680 2435

¹ Available from 2nd quarter of 2016.

Any necessary assembly may incur additional costs.

		Item number
	AMG velour floor mats, black. With embroidered AMG lettering.	
01	Driver's mat.	A166 680 2748 9F87
	Complete set not pictured.	A166 680 4248 9F87
02	AMG hub caps with AMG emblem. Set of 4 in presentation packaging.	A000 400 3100
03	AMG door pin, round. In high-quality stainless steel.	A000 766 0800
	AMG indoor car cover not pictured. Silver-coloured, with black AMG logo.	on request

			Item number	
04	5-twin-spoke wheel.	Finish: titanium grey, high-sheen.	Wheel: 10 J x 21 ET 46 Tyre: 295/40 R21	A166 401 2502 7X21
05	5-twin-spoke wheel.	Finish: black, high-sheen.	Wheel: 10 J x 21 ET 46 Tyre: 295/40 R21	A166 401 2502 7X23
06	Multi-spoke wheel.	Finish: titanium grey, high-sheen.	Wheel: 10 J x 21 ET 46 Tyre: 295/40 R21	A166 401 3200 7X21

Light-alloy wheels are supplied without tyres, wheel bolts, valve caps or hub caps.
Any necessary assembly may incur additional costs.



01



02 03



53.3 cm | 21"

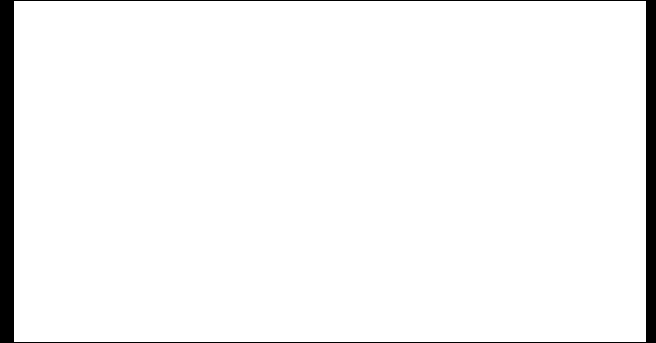
04

05 | 53.3 cm | 21"



06 | 53.3 cm | 21"





January 2016.

Please note: changes may have been made to the products since this publication went to press (01/2016). The manufacturer reserves the right to make changes to the design, form, colour and specification during the delivery period, provided these changes, while taking into account the interests of the vendor, can be deemed reasonable with respect to the purchaser. Where the vendor or the manufacturer uses symbols or numbers to describe an order or the subject of an order, no rights may be derived solely from these. The illustrations may show accessories and items of optional equipment which are not part of standard specification. Colours may differ slightly from those shown, owing to the limitations of the printing process. This publication may contain products and services which are not available in certain countries. Information given regarding statutory regulations, legal requirements and taxation and the consequences thereof applies to the United Kingdom only and is correct at the time of going to press. Please contact your Mercedes-Benz Retailer for further information. Prices subject to change.

Daimler AG, Mercedesstr. 137, 70327 Stuttgart, Germany
Mercedes-Benz Accessories GmbH · A Daimler Company

3230 · 2097 · 02-01/0316 · Printed in the Federal Republic of Germany
© 2016 Mercedes-Benz Accessories GmbH. All rights reserved.