

# S-Class

Cabriolet and Coupé



Mercedes-Benz





This Brochure is prepared by Daimler AG and it predominantly reflects the capabilities and performance of vehicles sold in Europe. Some characteristics, capabilities performance features and optional extras (e.g. towing systems) may not be available or may not apply in Australia or under Australian conditions. The information in this brochure is therefore indicative, illustrative and provided only for guidance and should not be relied on. To obtain current and accurate information on a vehicle and any options applicable to Australia, contact your local authorized Mercedes-Benz dealer.



## All about enjoyment.

From now on, only one thing counts: the next bend. Or the next ray of sunshine. From now on, it's all about this sound. And this sight. It's all about me. About us. About this exceptional Mercedes. A fascination so great that it comes in two forms: as the S-Class Cabriolet and as the S-Class Coupé. Indulge yourself in a car that will enrich your life in incalculable ways.

EXPERIENCE THE S-CLASS CABRIOLET AND THE S-CLASS COUPÉ IN DIGITAL FORM.



Digital "Mercedes-Benz Guides" for the iPhone® are available free of charge from the Apple® iTunes® Store. Glorious HD images and much more await you on your tablet - at [www.mercedes-benz.com](http://www.mercedes-benz.com)



## All about indulging yourself.

### **2 | Mercedes-Benz S 500 Cabriolet Alubeam silver metallic**

AMG Line Plus, AMG multi-spoke light-alloy wheels, painted black with a high-sheen finish, dark red soft top, Exclusive nappa leather upholstery in crystal grey/black, designo black flowing lines piano lacquer trim

### **8 | Mercedes-Benz S 500 Cabriolet designo diamond white bright**

10-spoke light-alloy wheels in thulium silver, blue soft top, designo Exclusive nappa leather upholstery in porcelain/deep-sea blue, high-gloss brown burr walnut wood trim

### **14 | Mercedes-Benz S 500 4MATIC Coupé iridium silver metallic**

AMG Line, AMG multi-spoke light-alloy wheels, Exclusive package, Exclusive nappa leather upholstery in saddle brown/black, black piano lacquer trim

### **20 | Mercedes-Benz S 500 4MATIC Coupé magnetite black metallic**

Multi-spoke light-alloy wheels, nappa leather upholstery in porcelain/espresso brown, brown burr walnut wood trim

### **64 | Mercedes-AMG S 63 4MATIC Cabriolet designo diamond white bright**

AMG 10-spoke forged wheels, painted black and with a high-sheen rim flange, designo Exclusive nappa leather upholstery in bengal red/black, AMG carbon-fibre/black piano lacquer trim

### **72 | Mercedes-AMG S 65 Cabriolet anthracite blue metallic**

AMG multi-spoke forged wheels with high-gloss polished ceramic finish, designo Exclusive nappa leather upholstery in porcelain/espresso brown, AMG carbon-fibre/black piano lacquer trim

### **64 | Mercedes-AMG S 63 4MATIC Coupé designo diamond white bright**

AMG 10-spoke forged wheels, painted matt black and with a high-sheen rim flange, designo Exclusive nappa leather upholstery in black/black, AMG carbon-fibre/black piano lacquer trim

### **82 | Mercedes-AMG S 65 Coupé anthracite blue metallic**

AMG multi-spoke forged wheels with high-gloss polished ceramic finish, designo Exclusive nappa leather upholstery in porcelain/espresso brown, AMG carbon-fibre/black piano lacquer trim

## All about impressions.

**26** | Mercedes me

**30** | Services

**34** | Engines, 9G-TRONIC

**36** | MAGIC BODY CONTROL suspension, 4MATIC

**39** | Driving Assistance package Plus

**41** | Integral safety concept

**42** | Infotainment and multimedia

**46** | Equipment, packages and accessories

**62** | Wheels

**64** | Mercedes-AMG models

**88** | Dimensions and technical data

**92** | Upholstery, paintwork and soft tops

## What value should be placed on freedom?

As the S-Class Cabriolet demonstrates: the ultimate. A Mercedes that raises driving to a new and inestimable level of refinement. So stylish and luxurious that when it opens up, the eyes and hearts of true car enthusiasts open wide as well.







Car spa.



**WARM SUNSHINE ON YOUR SKIN. "HOT STONES" ON YOUR BACK.**

The Seat Comfort package is available as an option for the S-Class Cabriolet. A sense of comfort beyond compare. One highlight of the package is the ENERGIZING massage function. There is a choice of six massage programmes – ranging from relaxing to activating. For example "Hot-Stone Massage", which applies warmth and gentle pressure to deliver a particularly relaxing experience. The soothing movements stimulate the muscles and encourage the circulation. The ideal complement to this system, incidentally, is the optionally available neck-level heating system AIRSCARF: air outlets in the head restraints wrap the driver's and front passenger's necks in warm, cosy air, rather like an invisible scarf.









## Enjoy the greatest luxury of our age.

Time. Make sure you take enough of it. Leave everything else behind. And luxuriate in the Cabriolet in the S-Class range. The highlight in design terms is the instrument panel with its sculptural lines, which makes abundant use of wood or carbon-fibre trim. In exquisite handcrafted quality, it provides the perfect framework for a level of comfort that takes all the stresses and strains away from you, whilst adding a wealth of fascinating impressions.







## More speed, less haste.

You remain serene and quietly confident, despite the fact that the S 500 can drive like a sports car. Accompanied by a V8 sound that will hold you enthralled. You will float on AIRMATIC air suspension with an adaptive damping system. You simply cannot get a more advanced, more emotional drive.

335 kW or 455 hp. Enough power  
to stop the world for a moment.















# Gran Performer.

How it all begins: with a design idiom that leaves you speechless. We are enthralled by the typical proportions of a large, sporty coupé, the long bonnet with its powerdomes, the elegant roof line and the frameless side windows. But we wanted more. A technology leader, a new symbol for modern luxury.













#### FINE LIGHTING

There's something different here. The sparkle, the exquisite finish – the world has never seen a headlamp like it. As an option, fine Swarovski crystals give the headlamps of the LED Intelligent Light System a unique flare – and no, that's not a misspelling. A stunning play of light, a sparkling performance: the front indicator light features 30 crystals, while the daytime running lamp directly beneath it includes a further 17. Available for both the S-Class Coupé and the Cabriolet.







## High-end by conviction.

If you've ever experienced the sound from the optional Burmester® High-End 3D surround sound system you'll know how hard it is to hide your enthusiasm. A three-dimensional audio experience that moves you to the core. Are you sitting comfortably? Leather upholstery is available in a choice of three colour schemes, while there are seven different lighting moods to choose from.

High tech's appeal.











#### **MAGIC BODY CONTROL**

If you so wish, the suspension of the S-Class Coupé can be turned into a technological tour de force. An active, hydraulic suspension system is able to absorb almost completely the rolling and pitching motions of the vehicle. As soon as you enter a bend, you will be amazed. The vehicle leans into the bend by as much as 2.65 degrees and the impact of the lateral forces is significantly reduced. It sounds like magic and it feels like magic, which is why we've called it just that: MAGIC BODY CONTROL with curve tilting function.





The sight of a Mercedes-Benz Coupé has been leaving us speechless for many years now: the continuous expanse of window, without a B-pillar, gives the car an elegantly flowing silhouette that remains unrivalled to this day. The frameless side windows are surrounded by fine chrome.







## Our next great innovation revolves around you.

Prepare to be inspired, surprised and thrilled by new services, products and experiences at [www.mercedes.me](http://www.mercedes.me). You are also warmly invited to check out our Mercedes me stores in major cities such as Hamburg, Milan, Tokyo or Hong Kong.







## Mercedes me. Welcome to your Mercedes-Benz world.

You have new questions, Mercedes-Benz has a new answer for you: Mercedes me. Your point of access to a fascinating world of personalised services from Mercedes-Benz. Offering innovative, individualised mobility, connectivity, finance and other services, as well as special brand experiences. All subject to continual development. Innovative, simple and cutting-edge: [www.mercedes.me](http://www.mercedes.me)

Join us – on your smartphone, tablet or PC. And let's shape tomorrow's world together. Any time, anywhere.

**Mercedes me connect** is all about networking the vehicle with the driver – and more besides: the car is becoming part of the way we live, providing added comfort as well as the reassurance of being permanently connected, even while on the move. Mercedes me connect includes Standard Services, which are able to provide you with automatic support in the event of a breakdown or an accident, and Remote Online Services – the option enabling vehicle settings to be carried out by smartphone.





**Mercedes me finance** offers you various routes to your vehicle of choice. Mercedes-Benz Financial Services finds the ideal leasing, financing and insurance solution together with you – tailored to your needs. Our leasing products enable you to drive the latest models at all times while enjoying maximum flexibility, as you pay not for acquisition of the vehicle, but only for its use. You also benefit from attractive monthly instalments. Our financing arrangements enable you to pay for your new Mercedes-Benz in a way that suits your personal budget. You can tailor your monthly instalments to your needs by deciding on an appropriate down-payment and term for your contract. Our individual insurance solutions offer reliable protection for your budget and your vehicle on attractive terms.

**Mercedes me inspire** offers special brand experiences and an opportunity to engage in an inspiring dialogue. We aim to share our ideas with you and we would like to know your ideas and wishes. So that we can always offer you the best solutions. A community is available to this end, and you will also find a growing range of offerings and experiences which go beyond the traditional vehicle-related topics – from areas such as events, travel and lifestyle.

**Mercedes me move** offers access to the intelligent mobility solution moovel: this mobility app pools the offerings from various mobility providers to find the ideal route from A to B. car2go is the pioneer and market leader worldwide in free-floating car sharing, and car2go black stands for smartphone-based car sharing with Mercedes-Benz B-Class vehicles. With the mytaxi app you can order a taxi, track its approach live and pay for your journey in a convenient manner.

**Mercedes me assist** makes easy work of organising maintenance for your vehicle, providing a convenient online means of locating a Mercedes-Benz dealer in your neighbourhood and arranging a service appointment. The digital service report keeps you up to date on performed service work at all times. The report is available to you online just one day after a service. In addition to the current service report, you can also view your vehicle's complete service history and service intervals, and you can print this information out if you so wish.

**Mercedes-Benz  
Service**





## Our service: the perfect fit for your Mercedes.

Beyond the car itself, you also acquire something priceless – an exclusive partnership with Mercedes-Benz. For you, this means safety, independence and motoring free of any worries. In other words: the reassuring feeling of driving a Mercedes.

**The best for your Mercedes.** No-one knows your Mercedes better than our experienced specialists at the Mercedes-Benz workshops. The comprehensive range of services and the high standard of quality ensure that your vehicle is in top condition. We use tested Mercedes-Benz GenuineParts and special tools to this end.

**The best for you.** Motoring free of any worries right from the word go: with the tailor-made Mercedes-Benz Service Contracts. These offer you the benefits of a reliable basis for long-term planning, permanent control over costs, fixed monthly rates and cost transparency. Plus ideal protection from additional workshop costs.

**The best for your mobility.** The Mercedes-Benz Mobilo<sup>1</sup> insurance package provides for motoring free of any worries throughout Europe – covering breakdowns, accidents, minor mishaps and vandalism. The benefits offered by Mobilo include on-the-spot assistance, a replacement vehicle, towing and overnight hotel accommodation, for example. This mobility guarantee is automatically on board for the first two years after initial registration, and can subsequently be renewed for a period of up to 30 years in all. Whenever you need assistance, you can reach us free of charge throughout Europe on 00800 1 777 7777<sup>2</sup>.

### ↘ FIND OUT MORE

For the full information on Mercedes-Benz Service Contracts, go to [www.mercedes-benz.com/servicevertraege](http://www.mercedes-benz.com/servicevertraege) – or ask your authorised Mercedes-Benz dealer to draw up an individual offer for you.

<sup>1</sup> Our general terms and conditions apply. The period of validity is extended after each service carried out by an authorised Mercedes-Benz service partner until the due date for the next service – up to a maximum of 30 years after initial registration. <sup>2</sup> Roaming charges may apply when calling from abroad.

## What would motorsport be without Mercedes-Benz?

The first vehicle to ever win an automobile race was powered by a Daimler engine. The first Mercedes was a racing car. The Silver Arrows – a true legend. Mercedes-Benz has a long tradition of involvement with the world of sport. Motorsport shapes the brand and every vehicle bearing the Mercedes star to this day. Discover the brand's unique history first-hand: at the Mercedes-Benz Museum in Stuttgart.

### ↘ FIND OUT MORE

Discover just what has been moving the world for almost 130 years and take a journey through time as well as through the history of the automobile at the Mercedes-Benz Museum. More than 1500 exhibits await you on 16,500 sqm of floor-space, including unique gems such as the oldest surviving Mercedes from 1902 or the legendary gull-wing models. Welcome to a place of innovation:

[www.mercedes-benz.com/museum](http://www.mercedes-benz.com/museum)





## What would Mercedes-Benz be without motorsport?

3 June 1934 marked the beginning of the Silver Arrows legend in the International Eifel Race at the Nürburgring. The Silver Arrows works team MERCEDES AMG PETRONAS continued this tradition in the 2014 Formula 1 season. Its successful involvement was crowned by the most impressive double victory of the season, with the team topping both the constructors' and the drivers' rankings. The team's successes are not restricted to the race track, however. Every mile raced also advances the development of hybrid technology for series production.

### ↘ FIND OUT MORE

Fascinating Formula 1 goes multimedia:

<http://www.facebook.com/MercedesAMGF1>

<http://twitter.com/MERCEDESAMGF1>

<http://www.youtube.com/user/MERCEDESAMGPETRONAS>

<http://plus.google.com/+Mercedesamgf1/posts>

<http://instagram.com/MercedesAMGF1#>

<http://www.MercedesAMGF1.com>



MERCEDES AMG PETRONAS F1 W06 hybrid, 2015 season.





# Inseparable.

Any conflict between efficiency and dynamism was overcome a long time ago at Mercedes-Benz. The effortless performance and low fuel consumption of the S 400 4MATIC Coupé, with its 270 kW V6 petrol engine and seven-speed automatic transmission 7G-TRONIC PLUS as standard, are impressive.

Eight cylinders – no other engine gets under the skin in quite the same way. As the latest model to follow in this tradition, the S 500 rolls out an unmistakable, irresistible carpet of sound. A specially developed sound control system ensures that this effect comes into play as soon as the car starts or is accelerated sharply, while during normal driving the engine remains completely restrained. In acoustic terms, it thus melds the emotional appeal of a sports car with the comfort of an S-Class to unique effect.

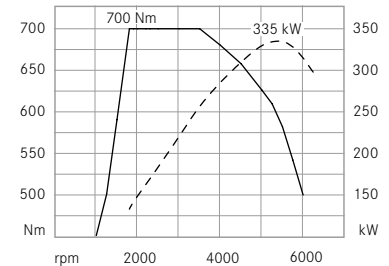
The S-Class Coupé and Cabriolet are equipped as standard with the **9-speed automatic transmission 9G-TRONIC**. Featuring nine forward gears, this automatic transmission takes efficiency, comfort and dynamics to a completely new level. The wider gear spread allows a reduction in engine speed. Performance remains excellent, while ride comfort is enhanced and noise levels are reduced. Smaller gear ratio increments and faster gear changes lead to even greater responsiveness and agility, while the car's exceptional efficiency has resulted in even lower fuel consumption. The gentle and almost imperceptible changes of gear made by

the transmission are similarly impressive. As 9G-TRONIC is able to skip individual gears, multiple downshifts are possible for fast and powerful sprints. The shift characteristics can be preset from economical to dynamic with the transmission modes “Economy”, “Sport” and “Manual”. Drivers with sporty inclinations can switch gears manually using the DIRECT SELECT steering-wheel gearshift paddles – much as in motorsport.

Depending upon the model selected, the seven-speed automatic transmission **7G-TRONIC PLUS** is also available. A torsional damper allows exceptionally comfortable and fuel-efficient driving at low engine speeds. As in the case of the 9G-TRONIC, there is a choice of three transmission modes as well as the option of selecting the gears manually using the DIRECT SELECT steering-wheel gearshift paddles.

## S 500 4MATIC COUPÉ

The S 500 4MATIC Coupé delivers 335 kW (455 hp) and peak torque of 700 Nm at 1800–3500 rpm. Further technical data for the S-Class Coupé and Cabriolet may be found from page 89 onward.



Engine speed rpm

Torque in Nm

Output in kW

### ↘ FIND OUT MORE

A drive system that's so powerful that we've dedicated a whole section to it: find out all about the Mercedes-AMG models from page 64 onward.

## MAGIC BODY CONTROL. With curve tilting function.

It's called the curve tilting function and it does exactly "what it says on the tin": during cornering, the body of the vehicle leans into the bend by up to 2.65 degrees. This significantly reduces the degree to which lateral forces are felt; and taking on bends is even more enjoyable. Anticipated comfort: the suspension adjusts to uneven sections in the road before the vehicle gets to them. This is courtesy of the innovative **ROAD SURFACE SCAN**, a technological milestone. With the aid of a stereo camera positioned behind the rear-view mirror, the topography of the road ahead is registered precisely.

Depending on the engine variant chosen, this technology is available as standard or as an option for the Coupé, but not in conjunction with the all-wheel drive system 4MATIC or for the Cabriolet.

**Staying on course, with no rocking or rolling, takes character – and the all-wheel drive system 4MATIC.**

The S 400 and S 500 Coupé as well as the S 500 Cabriolet are available with 4MATIC. The permanent all-wheel drive system provides the best possible traction, ensuring that the vehicle sits incredibly stably and calmly on the road. Particularly on a slippery or loose surface, this enhances both comfort and driving safety quite noticeably. Thanks to the rear-axle-biased brake force distribution and the exceptionally lightweight construction techniques used, 4MATIC brings added benefit even with a sporty and dynamic driving style.

**DRIVING THE S-CLASS COUPÉ AND CABRIOLET.  
FURTHER HIGHLIGHTS**

---

The all-wheel-drive Coupé models, along with all S-Class Cabriolet models, are fitted with the **air suspension system AIRMATIC**. The damping at each wheel adapts to the current driving situation and can, if so required, be individually set. Over long stretches of motorway you can enjoy a pleasant, soft level of ride comfort, but on winding country roads a more sporty and direct dynamic driving experience.

---

Depending on the actual vehicle suspension, various modes can be selected using the **suspension setting switch** in the centre console. Confirmation of the selection made is displayed in both the instrument cluster and the head unit.

---

The **Direct-Steer system** supplements the comfort of speed-sensitive power steering with a variable steering ratio dependent on the steering angle. On winding roads, for example, this produces a more agile handling response and improved straight-line stability.

---





## Mercedes-Benz Intelligent Drive. On the road to accident-free driving.

The S-Class Coupé and the Cabriolet take stock of their surroundings more intensively, precisely and quickly than any other car in this class. A stereo camera can detect objects and pedestrians crossing in front of the car in spatial terms and calculate their path. Intelligent algorithms evaluate this information from a wide monitoring area to detect and undertake a three-dimensional evaluation of vehicles approaching, in front and crossing, as well as of pedestrians and various types of traffic signs and road markings. Numerous safety and assistance systems, the availability of which depends upon the vehicle's precise specification, can assess a wide range of traffic situations virtually of their own accord, analyse these and trigger supporting measures.

### ↳ FIND OUT MORE

**Mercedes-Benz Intelligent Drive** is our generic term for intelligent technologies which actively support the driver and help to take the strain out of driving. Find out more at [www.mercedes-benz-intelligent-drive.com](http://www.mercedes-benz-intelligent-drive.com)





## Driving Assistance package Plus. Positively safer.

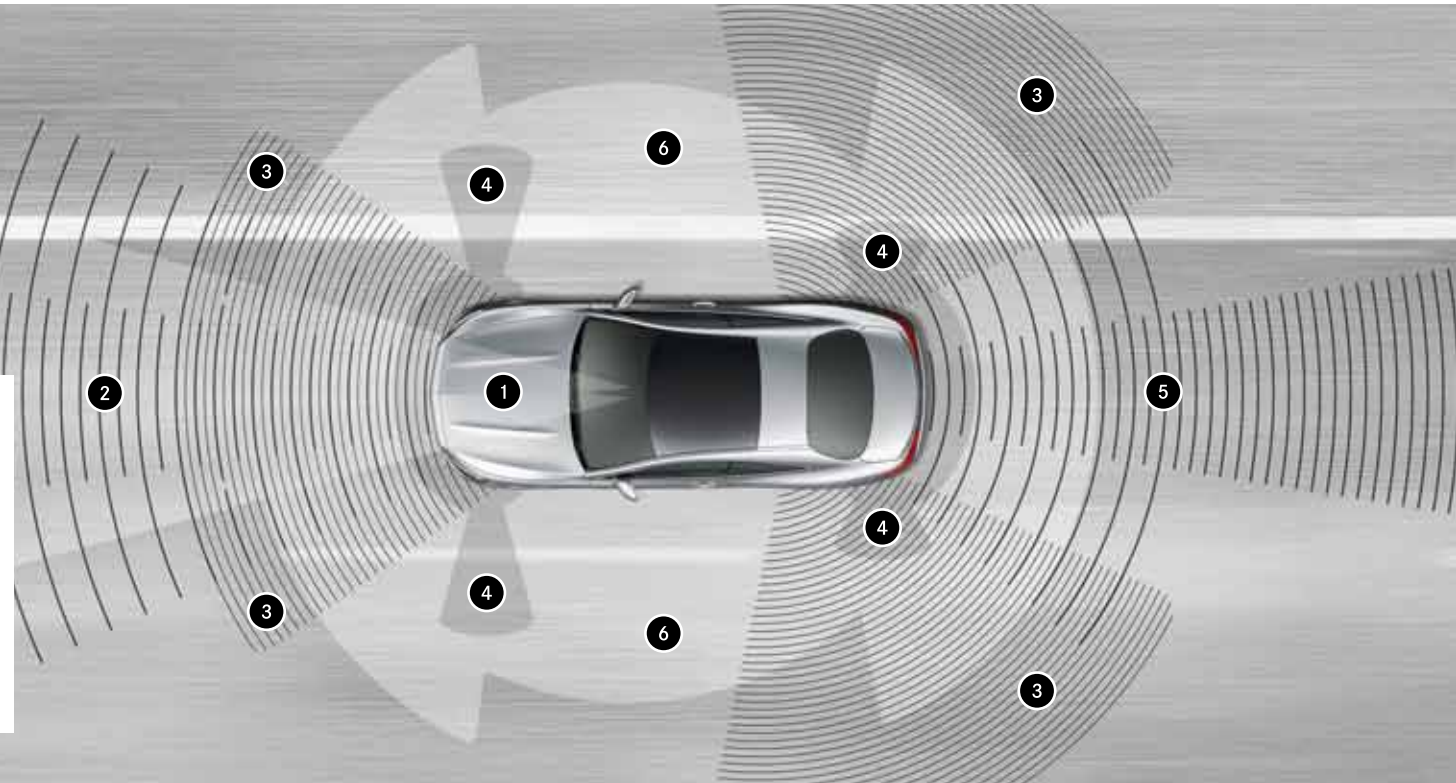
An optional equipment package made up of a perfectly coordinated cluster of safety and assistance systems: this helps to take the strain off the driver, to reduce any risk of accident and to improve protection for the car's occupants as well as for other road users. **Brake Assist BAS PLUS** with Cross-Traffic Assist and **PRE-SAFE® Brake** with pedestrian detection can reduce the risk of accidents at junctions, rear-end collisions and collisions with pedestrians, particularly in urban traffic. **Active Lane Keeping Assist** and **Active Blind Spot Assist** provide assistance if the vehicle leaves its lane unintentionally or during lane changes if there is a danger of collision with other vehicles. They

can use one-sided brake actuation to help return the vehicle to its lane or to prevent an accident. **PRE-SAFE® PLUS**, finally, expands the **PRE-SAFE® preventive occupant protection system** to include protective measures in the event of an imminent rear impact. **DISTRONIC PLUS** with Steering Assist and Stop&Go Pilot assists the driver with keeping a safe distance from the vehicle in front and also with staying in the centre of the lane – so ensuring a high level of stress-relieving comfort, particularly over long distances or in stop-and-go traffic.

### MERCEDES-BENZ INTELLIGENT DRIVE

The Driving Assistance package Plus is just one part of a wider approach: Mercedes-Benz Intelligent Drive is the generic term used for a series of intelligent technologies that form the basis for numerous safety and assistance systems in the S-Class Coupé and S-Class Cabriolet.

- 1 | Stereo multi-purpose camera.
- 2 | Long-range radar with mid-range scanning functionality.
- 3 | Short-range radar.
- 4 | Ultrasonic sensors.
- 5 | Multi-mode radar.
- 6 | 360° camera.



## Masterful manoeuvring.

Parking and manoeuvring with realistic all-round visibility is made possible by the optional 360-degree camera system and its four interlinked close-range cameras. A bird's-eye view of the vehicle and its surroundings can be displayed on the **COMAND Online** screen. Obstacles below the window line are also visible to the driver. This is helpful, for example, when approaching kerbs. One camera is mounted in the radiator grille at the front; there is one in each exterior mirror and one in the centre of the boot lid. Various views additionally show guide lines to make parking easier. The rear camera is protected against soiling by the large Mercedes star on the boot lid. When the 360° camera is activated, the star tilts up electrically.

### THE PARKING AIDS

**Active Parking Assist** makes searching for a parking space easier, as well as manoeuvring into or out of either a parallel or an end-on parking space. The system automatically steers the vehicle into parking spaces, relieving the driver of the work of steering and braking.

The **reversing camera** is switched on automatically when the driver selects reverse gear and shows the driver the area behind the vehicle on the head unit display, together with dynamic guide lines.





# The integral safety concept from Mercedes-Benz.

Avoiding accidents, identifying the best response in a dangerous situation and mitigating the consequences of an accident – Mercedes-Benz takes a holistic approach to driving safety. Fully alert at every moment, able to react in a considered manner in highly complex situations and to do so more comprehensively than any person ever could. The familiar star works to protect the occupants of the vehicle as well as other road users.

## SAFE DRIVING

---

**ATTENTION ASSIST** can improve driving safety, especially on long journeys and at night. If the steering behaviour of the driver betrays typical signs of drowsiness and severe loss of attention, the system can give a visual and audible warning of impending microsleep.

**Active Blind Spot Assist** can warn the driver of vehicles in the blind spot during a lane-change and apply one-sided braking intervention to help avoid a collision (part of the optional Driving Assistance package Plus).

**COLLISION PREVENTION ASSIST PLUS** combines a radar-based proximity warning, braking assistance with Adaptive Brake Assist and autonomous partial braking to reduce the danger of rear-end collisions (standard in certain countries, not in conjunction with Driving Assistance package Plus).

The optional **Night View Assist Plus** system enables drivers to detect pedestrians or larger animals sooner in the dark. They are clearly shown on the multifunction display of the instrument cluster.

## IN THE EVENT OF DANGER

---

The anticipatory measures that come as part of the **PRE-SAFE® system** offer maximum protection in the event of an imminent accident. To achieve this, PRE-SAFE® continuously evaluates sensor data from other systems, such as the Electronic Stability Program ESP® and BAS Brake Assist, allowing it to intervene when it detects, for example, heavy over/understeer or emergency braking. PRE-SAFE® PLUS (part of the optional Driving Assistance package Plus) takes this concept a significant step further in that it is also effective in cases where a rear impact appears imminent. The elements in this case comprise the activation of the hazard warning lights, the reversible tensioning of the seat belts and full braking of the stationary vehicle in order, for example, to prevent the vehicle from rolling forward onto a junction.

## IN AN ACCIDENT

---

A comprehensive protection system can reduce the risk of injury significantly. This includes the active bonnet, which in certain types of accidents is instantly automatically raised by a few centimetres, so helping to provide better protection

for pedestrians or cyclists. The vehicle occupants, in their turn, can be protected in the event of a road traffic accident by as many as eight airbags.

## AFTER AN ACCIDENT

---

Every Mercedes-Benz is fully trained in first aid. If the worst comes to the worst, the engine can be stopped automatically and the central locking system unlocked, while at the same time the hazard warning lights and emergency interior lighting can be activated. Finally, the integrated Mercedes-Benz emergency call system can send GPS position data and important vehicle information, and establish a voice connection.

### ↘ FIND OUT MORE

The **Mercedes-Benz TechCenter** is a repository of informative multimedia films on virtually every aspect of safety technology.  
<http://techcenter.mercedes-benz.com>



16:54

100

8

81

L1187/ROTENWALDSTRASSE, STUTTGART

500m



Traffic

17:05  
6.6km



PASSENGER AIR BAG

ON OFF





# The luxury resort in your digital world.

Close connection to a variety of online services gives access to a whole series of new functions to make any journey more enjoyable and entertaining. If you use the vehicle as a WiFi hotspot, for example, your GPS data can be automatically transmitted in the event of an accident and help quickly organised. Special apps deliver innumerable radio stations and useful travel information to your vehicle. One particularly valuable extra: **Live Traffic Information** receives traffic information that is more precise and up to date than ever before. Route guidance is optimised on an ongoing basis and your arrival time calculated with absolute precision. And you arrive more relaxed.

These online services are available in conjunction with the control and display system **COMAND Online**. Information is shown on a stunningly high-resolution 31.2 cm colour display screen. The ideal complement to this system is the **head-up display**, which projects important information as a virtual image directly into the driver's line of sight. The display is perceived by the driver as floating above the bonnet about two metres away.





## Trailblazing technology. A finger on the pulse.

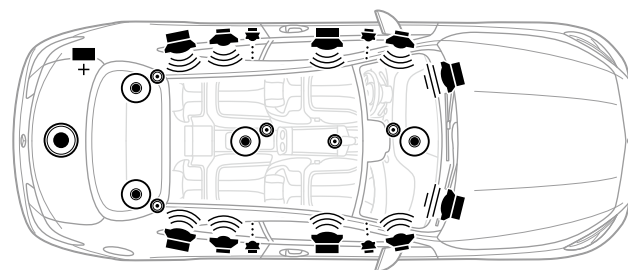
In order to ensure that all these new technologies and functions really do add value, we have devised a new control concept. In addition to the COMAND Controller and the voice-operated control system **LINGUATRONIC**, the S-Class Coupé and Cabriolet are also fitted with an optional **touchpad**, which allows intuitive, almost playful, control of numerous telematics services. As with a smartphone, it is possible to navigate around the menu with single or multi-fingered gestures. The system will even recognise your handwriting. A whole new tactile experience that has the added benefit of improving driving safety, since the intuitive ergonomics allow concentrated driving.





## Music to the eyes.

The sound is almost indescribable. A total of 24 loudspeakers (23 in the Cabriolet) with an output of 1520 watts transform the interior into an acoustic dream. The bass speaker alone has an output of more than 400 watts. However, the optional **Burmester® High-End 3D surround sound system** is just as amazing when it's switched off. The speakers are designed like miniature works of art and feature an exceptionally high-quality finish.



- Tweeter
- Midrange speaker
- +
 Subwoofer
- +
 Amplifier
- +
 Midrange woofer
- +
 Frontbass speaker

In the S-Class Cabriolet, the speaker in the roof is omitted.



## Light.

A new and exceptional day and night design is created if so desired by the inclusion of fine Swarovski crystals in the headlamps of the **LED Intelligent Light System**. The fascinating play of light created by the crystals in the turn indicators and daytime running lamps provides striking visual highlights and accentuates the unique nature of the vehicle. The turn signal indicator with 30 crystals underscores the striking lines of the headlamps. 17 crystals shine resplendent in the daytime running lamps immediately below.

As you can see: a headlamp, too, can be a true designer item. But the standard-fit LED Intelligent Light System is – nomen est omen – far more than simply beautiful. For optimum visibility on country roads and motorways, when turning or cornering, the low-beam headlamps adapt to weather, light and driving conditions. In main-beam mode **Adaptive Highbeam Assist Plus** allows continuous long-range illumination of the road ahead, without dazzle. It masks out part of the light beam for oncoming traffic or vehicles travelling ahead.

The LED technology also impresses with its extremely low energy consumption, long operating life and a pleasant white light that comes close to the spectrum of natural daylight.



## In the mood.

The interior of the vehicle can be given a subtle and individual fragrance with the help of the optional **AIR-BALANCE package**. This consists of a fragrance generator located in the glove compartment, a glass flacon and an atomiser head. Four high-quality fragrances are available: NIGHTLIFE MOOD, DOWNTOWN MOOD, SPORTS MOOD, FREESIDE MOOD – plus an additional PACIFIC MOOD fragrance developed specifically for the S-Class Cabriolet. A further flacon can be filled with a personal choice of fragrance. The intensity and duration of perfume atomisation are adjustable. The fragrance is always subtle, unobtrusive and fades away rapidly once the system is switched off.

Oxygen ionisation of the interior air is a further function of the AIR-BALANCE package. Enrichment with oxygen anions has a freshening effect. At the same time certain viruses, bacteria and spores can be reduced. In addition, a filter system with two activated charcoal fine-particle filters cleans the outside air transported into the vehicle interior by the air conditioning system.



## Comfort that sends a warm tingle down the spine.

Every journey in the S-Class Coupé or Cabriolet brings with it an added sense of wellbeing. Particularly in conjunction with the optional **Seat Comfort package** and the active multicontour seats with ENERGIZING massage function and dynamic driving function for driver and front passenger that this includes. When on the move, the side bolsters automatically and dynamically adapt to vehicle movements to provide even better lateral support on winding roads and when adopting a sporty driving style. The

ENERGIZING massage function stimulates and relaxes the back muscles as required, with 14 air chambers, six programmes and two intensities. This both enhances comfort and helps keep the muscles toned over long distances. The combination of gentle pressure and pleasant warmth applied according to the principle of a hot-stone massage is particularly effective.



## Star gazing a particular speciality.

The S-Class Coupé is fitted as standard with a **panoramic roof**. This extends back from the top edge of the windscreen over about two thirds of the roof area, giving the car a distinctive and almost ethereal look that is totally consistent with the light-filled interior and pleasant, welcoming atmosphere. The optional **MAGIC SKY CONTROL** technology adds a final flourishing touch to the panoramic roof. In a matter of just seconds, the large panoramic roof can change from dark to transparent or vice-versa. When electrical

voltage is applied, particles in the glass structure align themselves so that light can pass through the glass. When the system is deactivated – and automatically when the vehicle is switched off – the glass goes dark. The particles are distributed randomly and stop most of the light from passing through. This prevents the vehicle from heating up quite as much, reducing the interior temperature by as much as 10 °C.





## No better way of protecting yourself from wind and weather.

The soft top of the S-Class Cabriolet is made out of an extremely hard-wearing and attractive quality fabric and is available in the colours black, blue, beige and dark red. It also features exceptional noise insulation. The acoustics have been honed down to the minutest detail: a horizontal seam above the rear window joins the sections of fabric together. The roof liner, in black, porcelain or crystal grey, completely covers the roof frame back as far as

the C-pillars. Further sections of trim enwrap the side frames of the roof within the roof liner. But for all this artistry with the soft top, the Cabriolet is still best driven open: which is why you can open the roof even when driving at speeds of up to 50 km/h – and close it again if you need to.



## First-class inner values.

In terms of their interiors, both the S-Class Cabriolet and the Coupé offer an exciting sporty-luxurious design idiom, with high-quality materials and unparalleled high-class appeal. The elegant sweep of the dashboard with its 31.2 cm display, a range of carefully coordinated colours and materials and superbly designed controls all emphasise the exclusive nature of this vehicle. An exceptional level of individualisation is possible courtesy

of three different variants of leather in a select choice of colours. The ambient lighting can be used to set the tone in the interior according to your mood with a pleasant, indirect light. Seven different colours, five dimming levels and four dimming zones can furthermore be used to enhance the overall sense of wellbeing.







## The only cabriolet with the comfort of an S-Class.

In a class of its own in terms of climate and noise comfort, too: even in low temperatures or stormy conditions, the S-Class Cabriolet makes open-top driving an enjoyable affair.

The optional **draught stop system AIRCAP** significantly reduces air turbulence in the interior. Activating the AIRCAP switch causes a wind deflector above the windscreen to extend, together with a draught stop behind the head restraints.

A further comfort highlight available to the driver and front passenger is the **AIRSCARF neck-level heating system**, which is also available as an option for the S-Class Coupé. Air outlets in the head restraints wrap the driver's and front passenger's necks in warm, cosy air, rather like an invisible scarf. Furthermore, with the optional Warmth Comfort package, you can have heated seats, armrests and steering wheel.







## AMG Line. Three letters that change almost everything.

AMG fascination can also be experienced in the S 400 4MATIC Coupé, the S 500 and the S 500 4MATIC. The AMG Line comprises, amongst other things, chrome-coloured pins in the diamond radiator grille, the dynamic AMG body-styling, sporty AMG light-alloy wheels and perforated brake discs, as well as fine interior trim elements in high-gloss black poplar wood. Further trim options are also available, for example metallised ash wood.

### EXTERIOR

---

AMG bodystyling, comprising AMG-specific front and rear aprons as well as side sill panels with inserts painted in vehicle colour

---

Diamond radiator grille with chrome-coloured pins

---

AMG 5-twin-spoke light-alloy wheels, titanium grey with a high-sheen finish, with 245/45 R 19 front tyres and 275/40 R 19 rear tyres (Code 793)

---

Option: AMG multi-spoke light-alloy wheels, titanium grey with a high-sheen finish, with 245/40 R 20 front tyres and 275/35 R 20 rear tyres (Code 769)

---

Perforated brake discs, brake callipers with "Mercedes-Benz" lettering

---

### INTERIOR

---

High-gloss black poplar wood trim

---

AMG brushed stainless-steel sports pedals with rubber studs

---

AMG velour floor mats

---



## AMG Line Plus.

Selected equipment items can be added to the existing scope of the AMG Line equipment and appointments line to enhance the car's dynamism and exclusivity still further. For the exterior these include striking 50.8 cm (20-inch) AMG multi-spoke light-alloy wheels, painted black and with a high-sheen finish (Code 789). An even sportier ambience in the interior is ensured by the AMG sports seats and the pleasantly tactile AMG sports steering wheel.



### PURE AMG

Experience the full fascination of AMG from page 64 on.

## Genuine accessories.

An S-Class leaves very little to be desired. But for those extra-special needs there is still our range of genuine accessories. These cover almost every conceivable need for more pleasant, practical and individual motoring. The diverse range of items all correspond to a common standard: every accessory has been developed specifically for the S-Class Coupé and Cabriolet in accordance with Mercedes-Benz's high quality standards. Discover the full range online at:

[www.mercedes-benz-accessories.com](http://www.mercedes-benz-accessories.com)



1 The following fragrances are available for the optional AIR-BALANCE package: NIGHTLIFE MOOD, DOWNTOWN MOOD, SPORTS MOOD and FREESIDE MOOD

2 10-spoke light-alloy wheels<sup>1</sup> in palladium silver metallic, high-sheen finish, for 245/40 R 20 tyres. Also available for 275/35 R 20 tyres as an option for the rear axle

3 5-spoke light-alloy wheels<sup>1</sup> in tremolite grey metallic, high-sheen finish, for 245/45 R 19 tyres. Also available for 275/40 R 19 tyres as an option for the rear axle (use of snow chains not possible)

4 10-spoke light-alloy wheels<sup>1</sup> in Himalayas grey, high-sheen finish, for 245/50 R 18 tyres. Also available for 275/45 R 18 tyres as an option for the rear axle

<sup>1</sup> Genuine accessory wheels are supplied without tyres.



## A masterpiece even just as it comes.

An S-Class features a whole series of highlights to make it stand out. These include light-alloy wheels with 245/50 R 18 tyres, a characteristic single-louvre radiator grille and full-LED headlamps. Leather upholstery with elegant contrasting topstitching and high-gloss brown burr walnut wood trim welcome you in the light-flooded interior – the latter courtesy of the Coupé’s panoramic roof and the Cabriolet’s soft top.



1  
2



- 
- 1 Ambient lighting with seven different colours and five dimming levels
- 
- 2 THERMOTRONIC automatic climate control with two climate zones and three climate styles and, in the Cabriolet, with intelligent climate control
- 
- 3 Automatic belt feeders for driver and front passenger of the S-Class Cabriolet, with control button in the instrument panel
- 
- 4 Soft top operation from the centre console of the S-Class Cabriolet allows the soft top to be opened or closed while driving at speeds of up to 50 km/h
- 
- 5 Panoramic roof with electric sunblind for the S-Class Coupé
- 
- 6 The boot of the S-Class Cabriolet is extremely spacious whether the soft top is open or closed and, thanks to an automatic boot separator, remains very practical to use at all times
-





3  
4 5  
6



## Optional extras | Selection.

There are countless ways of applying your own individual flair to the S-Class Coupé or the S-Class Cabriolet. From small details that add a certain something to luxuriously comfortable appointments packages. Take your time to browse around - in this catalogue, by reference to the price list or online. Configure your new S-Class at: [www.mercedes-benz.com](http://www.mercedes-benz.com)



1  
2



- 
- 1 Control panel for driving assistance systems
- 
- 2 Seat heating in the rear
- 
- 3 Burmester® surround sound system with 13 loudspeakers, a 9-channel DSP amplifier and a total system output of 590 watts
- 
- 4 SPLITVIEW from the driver's perspective (only for COMAND Online in the Coupé)
- 
- 5 AIR-BALANCE package with flacon in the glove compartment
- 
- 6 SPLITVIEW from the front passenger's perspective (only for COMAND Online in the Coupé)
-





3 5  
4 6







R41



R72



11R



13R



R70



R17



63R



54R

## Wheels.

Wheels are indispensable on technical grounds, of course. But on an emotional level, too, perfect wheels are an absolutely crucial ingredient of many people's dream car. With this in mind, we have put together a particularly large and diverse selection for you.

### STANDARD EQUIPMENT AND OPTIONAL EXTRAS

R41 10-spoke alloy wheels with 245/50 R 18 tyres (standard for S 500 4MATIC)

R70 5-twin-spoke AMG light-alloy wheels, with high-sheen finish; 245/50 R 18 front and 275/45 R 18 rear tyres (option for S 500 4MATIC)

R72 7-spoke light-alloy wheels; 245/50 R 18 front and 275/45 R 18 rear tyres (option for S 500 4MATIC)

R17 5-twin-spoke light-alloy wheels; 245/45 R 19 front and 275/40 R 19 rear tyres (option for S 500 4MATIC)

11R Multi-spoke light-alloy wheels; 245/45 R 19 front and 275/40 R 19 rear tyres (option for S 500 4MATIC)

63R Multi-spoke light-alloy wheels; 245/45 R 19 front and 275/40 R 19 rear tyres (option for S 500 4MATIC)

13R Multi-spoke light-alloy wheels; 245/40 R 20 front and 275/35 R 20 rear tyres (option for S 500 4MATIC)

### EX-FACTORY ACCESSORIES

54R 10-spoke light-alloy wheels; 245/40 R 20 front and 275/35 R 20 rear tyres (option for S 500 4MATIC)



793



769



753



648

63



788



789



647



696

## AMG

793 AMG 5-twin-spoke light-alloy wheels, painted in titanium grey with a high-sheen finish; 245/45 R 19 front and 275/40 R 19 rear tyres (part of AMG Line for S 500 4MATIC)

788 AMG 10-spoke forged wheels, painted in titanium grey and polished; 255/45 R 19 front and 285/40 R 19 rear tyres (standard for Mercedes-AMG S 63 and Mercedes-AMG S 63 and Mercedes-AMG S 63 4MATIC)

769 AMG multi-spoke light-alloy wheels, painted in titanium grey with a high-sheen finish; 245/40 R 20 front and 275/35 R 20 rear tyres (option for S 500 4MATIC)

789 AMG multi-spoke light-alloy wheels, painted in black with a high-sheen finish; 245/40 R 20 front and 275/35 R 20 rear tyres (part of AMG Line Plus for S 500 4MATIC)

753 AMG 5-twin-spoke forged wheels, painted in titanium grey with a high-sheen finish, including wheel bolt covers in black; 255/40 R 20 front and 285/35 R 20 rear tyres (option for Mercedes-AMG models)

647 AMG 10-twin-spoke forged wheels, painted in titanium grey and polished, including fully integrated wheel bolt covers; 255/40 R 20 front and 285/35 R 20 rear tyres (option for Mercedes-AMG models)

648 AMG 10-twin-spoke forged wheels, painted in matt black with a high-sheen rim flange, including fully integrated wheel bolt covers; 255/40 R 20 front and 285/35 R 20 rear tyres (option for Mercedes-AMG models)

696 AMG multi-spoke forged wheels, with ceramic high-gloss polished finish, including fully integrated wheel bolt covers; 255/40 R 20 front and 285/35 R 20 rear tyres (standard for Mercedes-AMG S 65)



# Mercedes-AMG S 63 and S 65 Coupé and Cabriolet.

The Coupé and Cabriolet in the Mercedes-AMG S-Class combine technical finesse with an incomparable driving experience; created for people who, when it comes to design and technology, are not willing to make compromises. Welcome to a car for all those who love performance and relish freedom.







# The Mercedes-AMG S 63 Cabriolet. Open to infinity.

Wherever the road leads, the Mercedes-AMG S 63 Cabriolet's superb standards are evident in every detail. With its stunning styling, high-quality materials and absolutely perfect workmanship, the Mercedes-AMG S 63 Cabriolet makes a very clear statement. The AMG sports seats, developed especially for the Cabriolet, give both driver and front passenger outstanding lateral support as well as exceptional comfort on long journeys.









# The horizon. Close enough to touch.

Breathtaking scenery. Inviting bends. One exceptional cabriolet. Could there be any better opportunity to get its power going on the road? The Mercedes-AMG S 63 Cabriolet accelerates to 100 km/h in just 3.9 seconds, leaving amazement in its wake. The AMG engineers have achieved this by fitting the vehicle with a powerful 5.5-litre V8 biturbo engine, along with many other innovations. The result: a cabriolet that offers the performance of an AMG and the comfort of an S-Class.









# A letter. A number. A statement.

Ignition. And straight away, the mighty 5.5-litre AMG V8 biturbo engine sets the car's 2185 kg of unladen weight in motion. And at this point it becomes palpable: the irrepressible power behind this unit is the outcome of meticulous precision and quality of workmanship. The engine in the Mercedes-AMG S 63 Cabriolet is individually produced in the AMG engine factory according to the principle of "One Man – One Engine". Each unit, hand-assembled by a single engine technician, delivers output of 430 kW (585 hp) along with peak torque of 900 Nm, which means that in terms of performance, torque and fuel consumption, the AMG 5.5-litre V8 biturbo engine is one of the most efficient series-production V8 engines in the world.

# V8





D S BR 5217



# The Mercedes-AMG S 65 Cabriolet. Eruptions. Made by people.

The passion has been kindled, followed immediately by pure acceleration: the AMG V12 biturbo engine, with a displacement of six litres, delivers 463 kW (630 hp) along with 1000 Nm of torque. Its strong heart, with seemingly never-ending reserves of power, accelerates the car to a speed of 100 kilometres an hour in just 4.1 seconds – along with the driver's pulse. The chrome trim at the front end of the vehicle gives a sense that an overwhelming force is approaching.











# Open air amid magnificent scenery.

The Mercedes-AMG S 65 Cabriolet is impressive, even from a distance. The monumental sound defines the tempo and timing of the symphony, while the distinctive V12-specific twin tailpipes set into the rear apron provide the organ. Thanks to the AMG sports suspension with AIRMATIC adaptive damping system, the vehicle becomes one with the road. It has been built for moments of intensity – both inside and out. It would be hard to top the interior of the Mercedes-AMG S 65 Cabriolet in terms of exclusivity – it combines performance technologies with exceptional comfort.







The Mercedes-AMG S 63 Coupé.  
Effortless superiority in its most powerful form.

The Mercedes-AMG S 63 Coupé promises big emotions. Each time it starts, the AMG 5.5-litre V8 biturbo engine – also found in the Cabriolet – unleashes untamed power of 430 kW (585 hp) and 900 Nm, while the potency of its torque will delight any driver. The optionally available performance-oriented AMG all-wheel drive system 4MATIC transfers this power to the road in effortless style, while the necessary control is provided by the AMG high-performance composite braking system with internally ventilated brake discs. The result is a driving experience that is impossible to describe. Or to forget.









## Leadership at first sight.

The stylistic appeal of the Mercedes-AMG S 63 Coupé lies in its distinctive lines and breathtaking design idiom. The striking front end with its hallmark AMG A-wing, the twin-blade radiator grille and the LED Intelligent Light headlamps all add up to an athletic looking vehicle. This sportiness is also systematically continued in the interior. Fine nappa leather is coupled here with attractive AMG bodystyling that includes an exclusive 3-spoke sports steering wheel, sports seats and stainless steel pedals. True greatness comes from within – and is evident from the details.





# Perhaps the finest biturbo orchestra in the world.

What does a phenomenon of nature sound like? The powerful sound of the AMG 5.5-litre V8 biturbo leaves little to the imagination in this respect. During normal driving, the AMG sports exhaust system with its automatic exhaust flaps sounds pleasantly restrained. Once the driving gets sporty though, it produces an emotive sound that you would have to go a long way to beat. The acoustics make a real statement – and, in conjunction with the two chrome-plated twin tailpipes of the AMG sports exhaust system and the 20-inch AMG forged wheels, add the final touch to the rear end of this sporty coupé. When driving in the Mercedes-AMG S 63 Coupé this aural backdrop signifies one thing above all: enjoyment, somewhere on the scale between comfort and goose bumps.

# SOUND



# The Mercedes-AMG S 65 Coupé. Ultima emotio.



The Mercedes-AMG S 65 Coupé is powered by an automotive legend: twelve cylinders, whose 463 kW (630 hp) and peak torque of 1000 Nm provide the unbridled power to catapult the driver forward in effortlessly superior fashion. A further touch of luxury-class comfort – alongside an interior appointments package designed exclusively for the V12 – is provided by the AMG sports suspension with curve tilting function, based on MAGIC BODY CONTROL. Performance, technical details and appointments blend together here to create a peerless vehicle. Expressive elements and dynamic lines are the outward evidence that suggests its ranking: unique levels of exclusivity and performance.








Perfection is the best driving force.







The power behind: the rear-biased power distribution of the performance-oriented AMG all-wheel drive system 4MATIC delivers superb acceleration and agility. AIRMATIC air suspension with the variable damping system ADS PLUS ensures that the vehicle is always optimally configured for the road – even when being driven sportily. The curve tilting function\* is a world premiere among standard-production automobiles: as on a banked curve, the lateral forces exerted on the occupants are reduced and passengers sit more firmly in their seats. On country roads above all, the curve tilting function adds to both driving enjoyment and comfort.

The AMG 6.0-litre V12 biturbo engine in the Mercedes-AMG S 65 Cabriolet and the Mercedes-AMG S 65 Coupé embodies the spirit of the AMG brand like no other power unit. Produced according to the principle of “One Man – One Engine”, this engine guarantees top performance – with the very highest level of precision. The result: monumental power delivery coupled with incomparably enjoyable handling. There can be no more fascinating form of mobility.

\* Available for the Mercedes-AMG S 63 Coupé and the Mercedes-AMG S 65 Coupé.







Passion grows when it is shared: the AMG Private Lounge is our community focused around the world of AMG. This is where AMG customers are able to meet at first-class events and to exchange ideas on the online platform about the latest developments from Affalterbach. They can benefit from special offers and from direct links to the head office of AMG: [www.mercedes-amg.com/privatelounge/welcome](http://www.mercedes-amg.com/privatelounge/welcome)

The AMG Driving Academy stands for an incomparable team spirit: experience performance with like-minded drivers and hone your driving skills at racetrack and lifestyle events held at breathtaking locations around the world. Become a part of the “World’s Fastest Family”: [www.mercedes-amg.com/driving-academy](http://www.mercedes-amg.com/driving-academy)

Still want more? With its AMG Customer Sports Program, AMG is offering a platform for professional motorsport – and, in the form of the Mercedes-AMG GT3, a racing car specifically designed for this purpose. Fully integrated service support allows you to participate in motorsport at the highest level: [www.mercedes-amg.com/customersports](http://www.mercedes-amg.com/customersports)

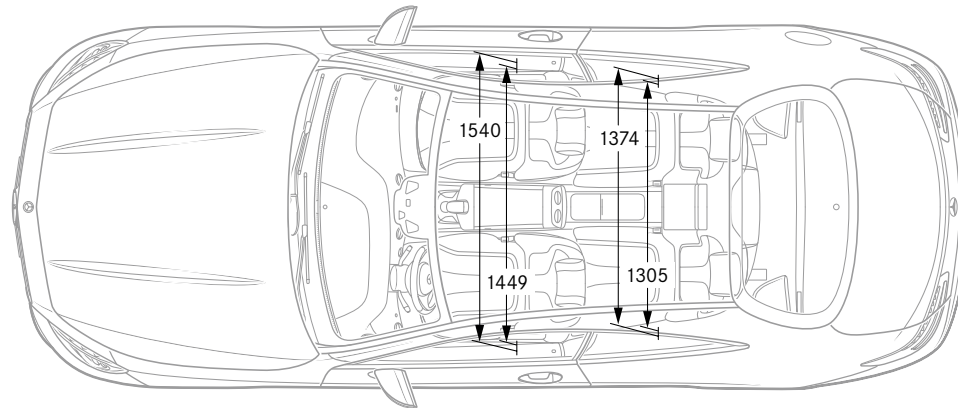
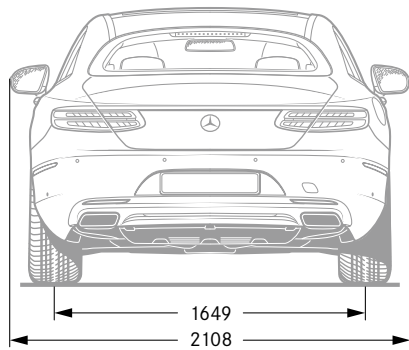
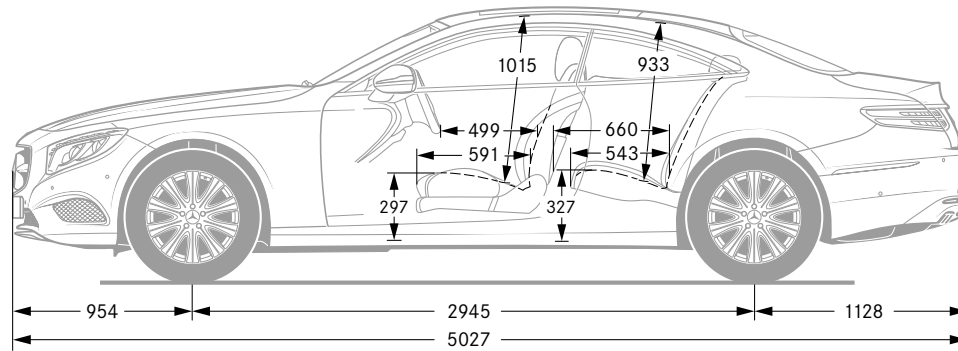
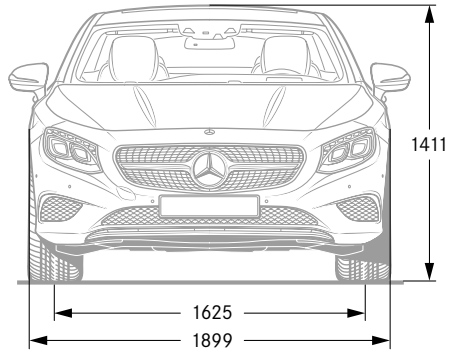
In the AMG Performance Studio we create cars that are perfectly tailored to your wishes and desires. No limits are placed on the creativity of our experts, who demonstrate their unparalleled craftsmanship and attention to detail in areas as varied as special technical components, extravagant paintwork finishes and the most exclusive interior appointments imaginable, to produce one-off masterpieces.

Enter the world of AMG. Experience true driving performance.

We don't just build cars.  
We make dreams come true.



## Coupé dimensions.



# Technical data for Coupé.

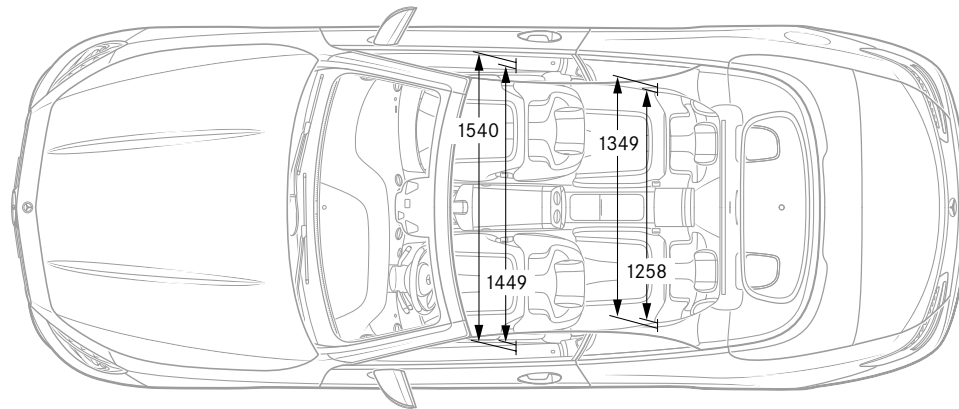
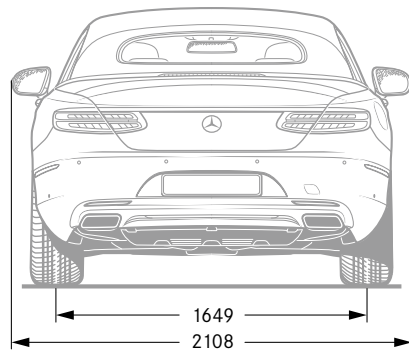
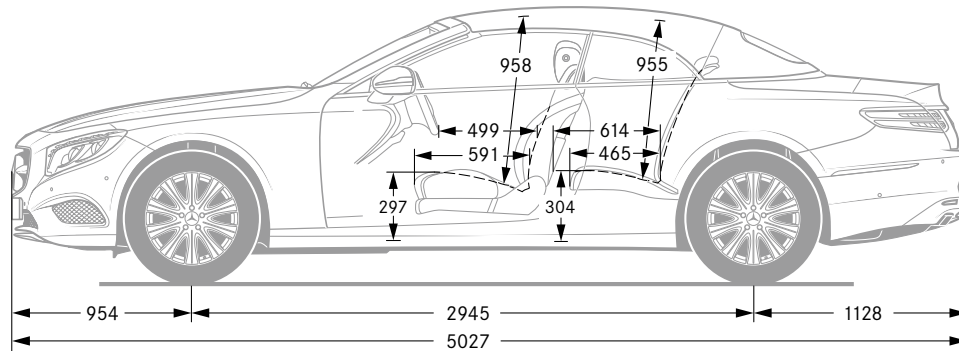
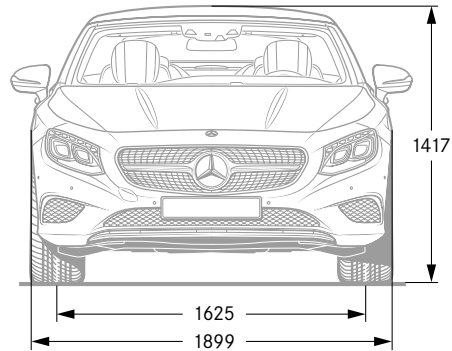
	<b>S 400 4MATIC</b>	<b>S 500</b>	<b>S 500 4MATIC</b>	<b>Mercedes-AMG S 63</b>	<b>Mercedes-AMG S 63 4MATIC</b>	<b>Mercedes-AMG S 65</b>
No. of cylinders/arrangement	6/V	8/V	8/V	8/V	8/V	12/V
Total displacement in cc	2996	4663	4663	5461	5461	5980
Rated output <sup>1</sup> in kW (hp) at rpm	270 (367)/5500-6000	335 (455)/5250-5500	335 (455)/5250-5500	430 (585)/5500	430 (585)/5500	463 (630)/4800-5400
Rated torque <sup>1</sup> in Nm at rpm	500/1800-4500	700/1800-3500	700/1800-4000	900/2250-3750	900/2250-3750	1000/2300-4300
Transmission	7G-TRONIC PLUS	9G-TRONIC	9G-TRONIC	AMG SPEEDSHIFT MCT 7-speed sports transmission	AMG SPEEDSHIFT MCT 7-speed sports transmission	AMG SPEEDSHIFT PLUS 7G-TRONIC
Acceleration from 0 to 100 km/h in s	5.6	4.6	4.6	4.2	3.9	4.1
Top speed, approx. in km/h	250 <sup>2</sup>	250 <sup>2</sup>	250 <sup>2</sup>	250 <sup>2</sup>	250 <sup>2</sup>	250 <sup>2</sup>
Tyre size – front axle, rear axle	245/50 R 18, 245/50 R 18	245/50 R 18, 245/50 R 18	245/50 R 18, 245/50 R 18	255/45 R 20, 285/40 R 19	255/45 R 20, 285/40 R 19	255/40 R 20, 285/35 R 20
Fuel	Super Plus petrol	Premium petrol	Premium petrol	Super Plus petrol	Super Plus petrol	Super Plus petrol
Fuel consumption <sup>3</sup> in l/100 km						
Urban	11.7-11.4	11.7-11.5	12.4-12.2	14.0-14.0	14.2-14.2	17.1-17.1
Extra-urban	7.2-6.6	7.0-6.4	7.6-7.1	7.8-7.8	8.0-8.0	8.6-8.6
Combined	8.9-8.3	8.8-8.3	9.4-8.8	10.1-10.1	10.3-10.3	11.9-11.9
CO <sub>2</sub> emissions <sup>3</sup> in g/km combined	208-193	204-193	219-206	237-237	242-242	279-279
Emission class <sup>4</sup> /efficiency class <sup>5</sup>	Euro 6/C	Euro 6/C	Euro 6/D	Euro 6/E	Euro 6/F	Euro 6/G
Tank capacity in l/incl. approx. reserve	80/8.0	80/8.0	80/8.0	80/12.0	80/12.0	80/12.0
Boot capacity in l <sup>6</sup>	400	400	400	400	400	400
Turning circle diameter in m	11.60	11.60	11.60	11.60	11.90	11.60
Kerb weight <sup>7</sup> in kg	2035	2030	2090	2070	2070	2185
Perm. GVW in kg	2540	2585	2595	2535	2545	2585

**The best for your engine:  
Mercedes-Benz genuine engine oils.**

<sup>1</sup> Figures for rated output and rated torque in accordance with Directive (EC) no. 595/2009 in the currently applicable version. <sup>2</sup> Electronically limited. <sup>3</sup> The figures shown for fuel consumption and CO<sub>2</sub> emissions were obtained in accordance with the prescribed measuring process (§ 2 nos. 5, 6, 6a Pkw-EnVKV as amended). The figures are not based on an individual vehicle and do not constitute part of the product offer; they are provided solely for purposes of comparison between different vehicle models. <sup>4</sup> Data applicable within the European Union only. Country-specific variations possible. <sup>5</sup> Determined on the basis of the measured CO<sub>2</sub> emissions, taking account of the vehicle mass. <sup>6</sup> Figures in accordance with Directive 2007/46/EC in the currently applicable version. <sup>7</sup> Figures in accordance with Directive 92/21/EC in the currently applicable version (kerb weight with fuel tank 90% full, with driver, 68 kg, and luggage, 7 kg) for standard-specification vehicles. Optional extras and accessories will generally increase this figure and reduce the payload capacity accordingly. Further technical data can be found at [www.mercedes-benz.com](http://www.mercedes-benz.com)



## Cabriolet dimensions.



## Technical data for Cabriolet.

	<b>S 500</b>	<b>Mercedes-AMG S 63 4MATIC</b>	<b>Mercedes-AMG S 65</b>
No. of cylinders/arrangement	8/V	8/V	12/V
Total displacement in cc	4663	5461	5980
Rated output <sup>1</sup> in kW (hp) at rpm	335 (455)/5250–5500	430 (585)/5500	463 (630)/4800–5400
Rated torque <sup>1</sup> in Nm at rpm	700/1800–3500	900/2250–3750	1000/2300–4300
Transmission	9G-TRONIC	AMG SPEEDSHIFT MCT 7-speed sports transmission	AMG SPEEDSHIFT PLUS 7G-TRONIC
Acceleration from 0 to 100 km/h in s	4.6	3.9	4.1
Top speed, approx. in km/h	250 <sup>2</sup>	250 <sup>2</sup>	250 <sup>2</sup>
Tyre size – front axle, rear axle	245/50 R 18, 245/50 R 18	255/45 R 19, 285/40 R 19	255/40 R 20, 285/35 R 20
Fuel	Premium petrol	Super Plus petrol	Super Plus petrol
Fuel consumption <sup>3</sup> in l/100 km			
Urban	12.2–11.8	14.3–14.3	17.1–17.1
Extra-urban	7.5–6.8	8.2–8.2	8.9–8.9
Combined	9.1–8.5	10.4–10.4	12.0–12.0
CO <sub>2</sub> emissions <sup>3</sup> in g/km combined	212–199	244–244	272–272
Emission class <sup>4</sup> /efficiency class <sup>5</sup>	Euro 6/C	Euro 6/E	Euro 6/F
Tank capacity in l/incl. approx. reserve	80/8.0	80/12.0	80/12.0
Boot capacity in l <sup>6</sup>	350	350	350
Turning circle diameter in m	11.60	11.90	11.90
Kerb weight <sup>7</sup> in kg	2115	2185	2255
Perm. GVW in kg	2590	2635	2625

**The best for your engine:**  
**Mercedes-Benz genuine engine oils.**

<sup>1</sup> Figures for rated output and rated torque in accordance with Directive (EC) no. 595/2009 in the currently applicable version. <sup>2</sup> Electronically limited. <sup>3</sup> The figures shown for fuel consumption and CO<sub>2</sub> emissions were obtained in accordance with the prescribed measuring process (§ 2 nos. 5, 6, 6a Pkw-EnVKV as amended). The figures are not based on an individual vehicle and do not constitute part of the product offer; they are provided solely for purposes of comparison between different vehicle models. <sup>4</sup> Data applicable within the European Union only. Country-specific variations possible. <sup>5</sup> Determined on the basis of the measured CO<sub>2</sub> emissions, taking account of the vehicle mass. <sup>6</sup> Figures in accordance with Directive 2007/46/EC in the currently applicable version. <sup>7</sup> Figures in accordance with Directive 92/21/EC in the currently applicable version (kerb weight with fuel tank 90% full, with driver, 68 kg, and luggage, 7 kg) for standard-specification vehicles. Optional extras and accessories will generally increase this figure and reduce the payload capacity accordingly. Further technical data can be found at [www.mercedes-benz.com](http://www.mercedes-benz.com)



# Interior appointments.



Leather



Nappa leather



designo Exclusive nappa leather

## Upholstery

- 201 black/black
- 205 porcelain/espresso brown
- 801 black/black<sup>1</sup>
- 805 porcelain/espresso brown<sup>1</sup>
- 818 crystal grey/black<sup>1</sup>
- 961 black/black<sup>1</sup>
- 965 porcelain/espresso brown<sup>1</sup>
- 974 saddle brown/black<sup>1</sup>
- 975 porcelain/deep-sea blue<sup>1</sup>
- 977 bengal red/black<sup>1</sup>
- 978 crystal grey/black<sup>1</sup>

## Upholstery for AMG Line Plus

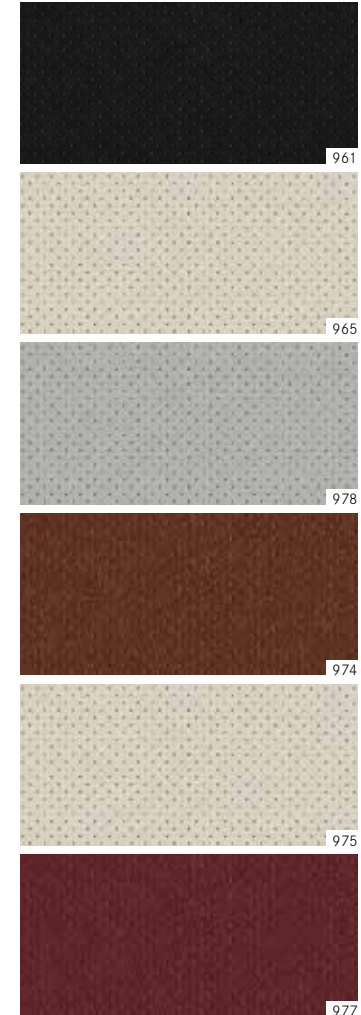
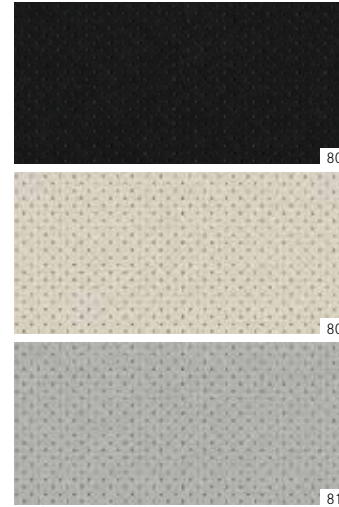
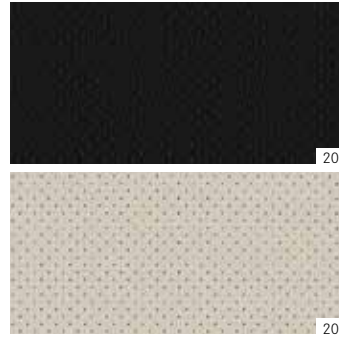
- 551 black/black<sup>1</sup>
- 555 porcelain/espresso brown<sup>1</sup>
- 558 crystal grey/black<sup>1</sup>
- 574 saddle brown/black<sup>1</sup>
- 575 porcelain/deep-sea blue<sup>1</sup>
- 851 black/black<sup>1</sup>
- 855 porcelain/espresso brown<sup>1</sup>
- 858 crystal grey/black<sup>1</sup>

## Upholstery for Mercedes-AMG models

- 561 black/black<sup>1</sup>
- 565 porcelain/espresso brown<sup>1</sup>
- 567 bengal red/black<sup>1</sup>
- 568 crystal grey/black<sup>1</sup>
- 584 saddle brown/black<sup>1</sup>
- 585 porcelain/deep-sea blue<sup>1</sup>
- 851 black/black
- 855 porcelain/espresso brown
- 858 crystal grey/black

## Trim

- 731 High-gloss brown burr walnut wood
- 729 High-gloss black poplar wood<sup>1</sup>
- H06 designo metallised ash wood<sup>1</sup>
- H21 designo black piano lacquer<sup>1</sup>
- H16 designo black flowing lines piano lacquer<sup>1</sup>
- H10 AMG carbon fibre/black piano lacquer<sup>1</sup>



<sup>1</sup> Optional extra.



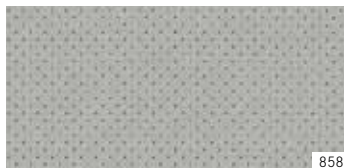
AMG nappa leather



851



855



858



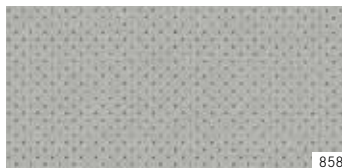
AMG Line Plus nappa leather



851



855



858



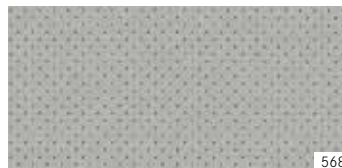
AMG designo Exclusive nappa leather



561



565



568



584



585



567



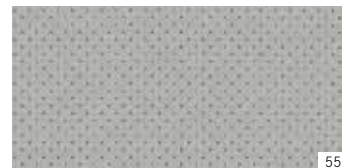
designo Exclusive nappa leather  
AMG Line Plus



551



555



558



574



575

Trim



731



729



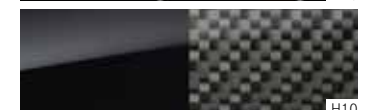
H06



H21



H16



H10



## Soft tops and paintwork.

---

### Non-metallic paint

---

040 black

---

### Metallic paints

---

183 magnetite black

197 obsidian black

775 iridium silver

890 cavansite blue

897 ruby black

988 diamond silver

989 emerald green

992 selenite grey

998 anthracite blue

---



---

### designo paint<sup>1</sup>

---

799 designo diamond white bright

---

### designo manufaktur paints<sup>1</sup>

---

033 designo mocha black metallic

044 designo allanite grey magno

049 designo cashmere white magno

---

### Soft top colours

---

740 black

744 blue

745 beige

746 dark red

---



740



744



745



746

<sup>1</sup> Optional extra.

Non-metallic paint



Metallic paints



designo paint<sup>1</sup>



designo manufaktur paints<sup>1</sup>







**Mercedes-Benz is one of the founding partners of the “Laureus Sport for Good Foundation”.**

Since the foundation was established in 2000, Mercedes-Benz has been supporting and promoting the aims and values of this worldwide non-profit-making programme: to use social sports projects to improve the lives of children and young people who are disadvantaged or suffering from illness. Laureus has become a fundamental element of Mercedes-Benz’s social responsibility. Every new Mercedes is an ambassador embodying these values. In buying a Mercedes you are supporting the “Laureus Sport for Good Foundation”.

**Please note:** changes may have been made to the product since going to print (30.10.2015). The manufacturer reserves the right during the delivery period to make changes to the design, form, colour or specification, provided these changes, while taking into account the interests of the vendor, can be deemed reasonable with respect to the purchaser. Where the vendor or the manufacturer uses symbols or numbers to describe an order or the subject of an order, no rights may be derived solely from these. The illustrations may include accessories and optional extras which do not form part of the standard specification. Colours may differ slightly from those shown, owing to the limitations of the printing process. This brochure is distributed internationally. Information given regarding statutory regulations, legal requirements and taxation and the consequences thereof applies to the Federal Republic of Germany only and is correct at the time of going to print. For current and more specific information in relation to the range of models, features, optional extras, colours and/or services available in your country, and their pricing, you should contact your nearest authorised Mercedes-Benz Passenger Car Dealer.

[www.mercedes-benz.com](http://www.mercedes-benz.com)

Daimler AG, Mercedesstr. 137, 70327 Stuttgart MS/MAC 6701 · 0931 · 02-00/0316

**Take-back of end-of-life vehicles.** At the end of its long life, you can return your S-Class Coupé or Cabriolet to us for environment-friendly disposal in accordance with the European Union (EU) End-Of-Life Vehicle Directive. But that day lies a long way off.

A network of vehicle take-back depots and dismantlers has been established to make it as easy as possible for you to return your vehicle. You can leave it at any of these points free of charge and, by doing so, make an important contribution to completing the recycling process and conserving resources.

For further information about the recycling and disposal of end-of-life vehicles and take-back conditions, please visit your national Mercedes-Benz website.