

# LandCruiser 200





# OH WHAT A FEELING

You'll feel it with every drive. In every twist and every turn. It's our unwavering commitment to move you, not only today, but well into tomorrow as we relentlessly re-imagine the future of mobility.

With our eyes on the horizon, we're committed to creating a future where all of humankind is empowered with the freedom to move.

03	Exterior Design	15	Toyota Safety Sense	21	Colours
07	Interior Design	16	GX	22	Accessories
08	Interior technology	17	GXL	26	Toyota Advantage
10	Off-road ability	18	VX		
13	Engine	19	Sahara		
14	Safety	20	Horizon Special Edition		



# All hail the King



Way back in 1958, our very first LandCruiser helped build the Snowy Mountains Hydro-Electric Scheme, reliably carrying workers to and from the job in unforgiving and unrelentingly hard conditions. Since those back-breaking

'survival tool' days, LandCruiser has stamped its authority as the tough, uncompromising WorkHorse that's come to be known as the 4WD that built Australia. Now, over sixty years on, LandCruiser 200 is a true Australian icon.

Even as it has evolved to incorporate the very latest cutting edge technology and luxury, the rich heritage of the job hardened, proven DNA is still at the heart of every 200 Series.





# Toughness never looked so good



When driving in some of the world's hardest conditions, you need proven strength and clever thinking to go the distance. Which is why a group of the world's finest four-wheel drive engineers crafted LandCruiser 200 to be both rugged in purpose and refined in intent. One look at the broad, uncompromising stance, and meticulous attention to detail, tells you LandCruiser 200 is more than ready to dominate. Whether on the road, crawling through muddy rivers or battling in the bush, you'll quickly appreciate LandCruiser 200 is seriously engineered to handle the hard stuff.

As well as looking bold and ready for action, the aggressive grille, protruding hood and radiator also add to the airflow of the engine. Sturdy roof rails are fitted as standard on GXL models and up, and the streamlined chrome side protection on Sahara variants not only looks good, but also protects against side by side door opening damage.

With LandCruiser 200, you've got rock solid appeal to match its hard-earned reputation as 'King off the Road.'

A Bi-LED headlamps – Sahara model shown  
B LED tail lamps – GXL model shown



B

# The way ahead is more than clear



Echoing its uncompromising history, the bold headlamp styling on the 200 Series has been inspired by LandCruiser's past – even down to the LandCruiser logo in the corner. These distinctly styled projector headlamps on GXL models feature a LED low-beam and halogen hi-beam, rising to Bi-LED headlamps on VX and Sahara models that automatically switch on in low or dusk levels of light. The Sahara also features Automatic High Beam<sup>1</sup> (AHB) which is designed to help you maintain safe and

considerate driving by switching between high and low beam as needed.

Each time you start a GXL, the auto-levelling feature will adjust the headlamps to match the pitch angle of the car for optimum performance. While the dynamic auto-levelling in VX and Sahara models constantly adjusts the headlamps whilst you're in motion, so whatever you're carrying and in all conditions, the light beam will always point in the optimum direction.

The Sahara and VX models also feature LED Daytime Running Lamps (DRLs), plus an integrated headlamp cleaning device. LED fog lamps feature on the GXL, VX and Sahara and are set in chrome surrounds to add extra style and further enhance visibility.

The back door garnish blends with the tail lamps to provide an added touch of sophistication on GXL, VX and Sahara models.





Sahara model shown\*







## Wide open comfort and space inside

The LandCruiser 200 might be tough as nails outside, but inside you'll be treated to a luxurious expanse of creature comforts. So wherever your LandCruiser 200 takes you, you'll always feel reassuringly removed from the rigours of the outside world. On GXL, VX and Sahara models you'll find steering wheel controls for audio functions, along with Multi Information Display (MID) and telephone functions to help make it an effortless journey.

From the country to the inner city, the satellite navigation<sup>3</sup> makes it easier to reach your destination and head back home again.

In the VX and Sahara, this operates via an Electro Multi-Vision (EMV) system that also controls the 9-speaker audio system and the pollen filtered air conditioning with 4-zone climate control.

In Sahara, the Rear Seat Entertainment system features two 11.6" screens installed behind the driver's and front passenger's headrests. GXL models and up offer dual-zone climate control for passengers in the front seats and additional cooler controls in the rear seats, whilst the GX has air conditioning fitted as standard.

- A Electroluminescent combimeter  
– GXL, VX and Sahara models only
- B Electro Multi-Vision (EMV) system  
– VX and Sahara models only (Overseas model shown)
- C Off-road control panel  
– Sahara model shown (Overseas model shown)
- D Heated and ventilated front seats  
– Sahara model only (Overseas model shown)
- E USB<sup>2</sup> and 3.5mm AUX<sup>2</sup> input  
– VX and Sahara models only (Overseas model shown)
- F Overhead console – Sahara model shown
- G 4-zone climate control air conditioning  
– Sahara and VX models only (Sahara model shown)
- H Black leather accented interior  
– VX and Sahara models only (Overseas model shown)

# Goes where others fear to tread



LandCruiser has always been ready for the toughest conditions, and the 200 Series raises its already legendary capability. The Torsen®LSD has a front-to-rear torque distribution structure of 41:59 to ensure greater stability and control when accelerating. On slippery, uneven surfaces the crawl control<sup>1</sup> helps you to maintain a low constant speed by automatically and

independently controlling both engine power and brake input to each wheel. This feature also includes Turn Assist to help manage you through the tightest of low-speed corners.

On VX and Sahara models (optional on GXL) the Kinetic Dynamic Suspension System (KDSS) hydraulically controls the anti-roll bar and makes

intelligent adjustments depending on whether greater off road wheel articulation or more competent on road handling is required. The VX and Sahara models are also fitted with a five setting Multi-Terrain Select (MTS) system that allows you to choose the specific grip assistance to match the terrain.



# Take charge of the situation

With a smart entry and start system on the GXL, VX and Sahara, it's easy to jump in and get started, even with your keys still in your pocket or bag. When reversing, the integrated reversing camera<sup>1</sup> available in these models, helps make it easier to see what's behind. In tight spaces, front and rear parking sensors<sup>1</sup> on GXL, VX and Sahara models use audible warnings to help you squeeze in and out with ease. The VX and Sahara models are also equipped with a Multi-Terrain Monitor<sup>1</sup> (MTM) that uses four cameras to help give you a close look at the conditions right around the vehicle.

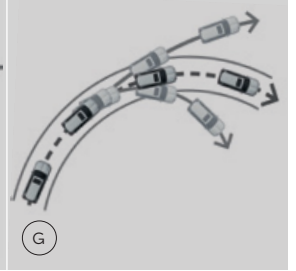
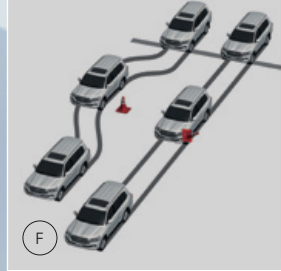
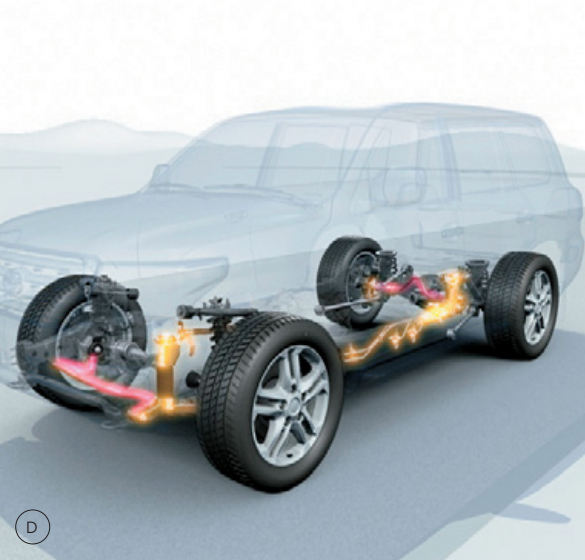
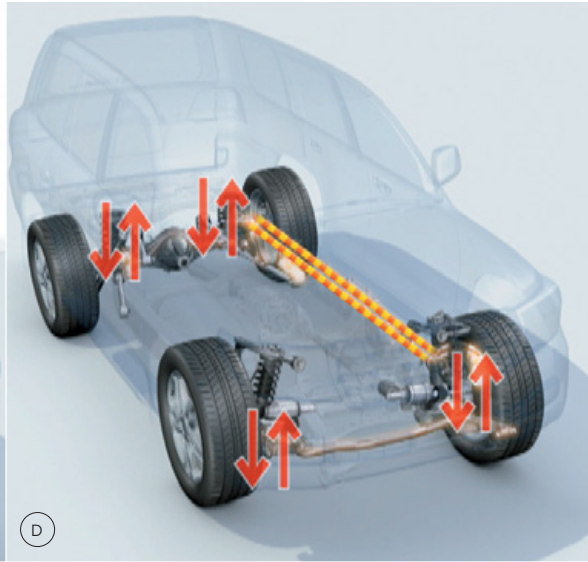
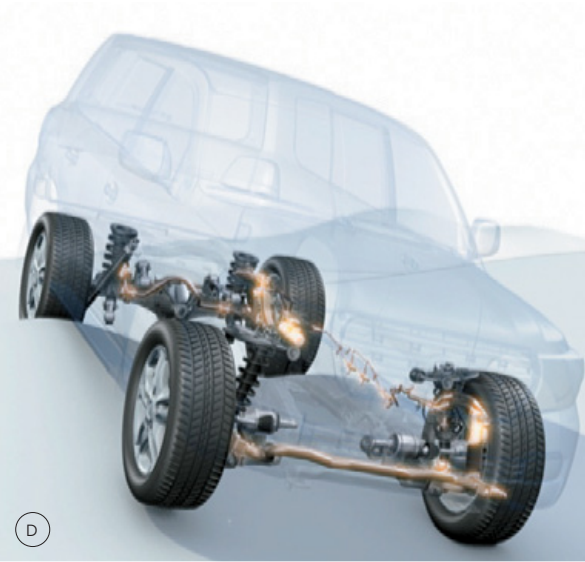
In all models you'll find a 12V outlet and in Sahara models there's also an integrated wireless phone charger.<sup>5</sup>

Even with such an abundance of innovative technology, the 200 Series is still 100% LandCruiser tough. When faced with the steepest terrain, Hill-start Assist Control<sup>1</sup> (HAC) will help ensure a smooth take-off and the Multi-Terrain Anti-lock Braking System (ABS) is also fitted as standard on all models. You'll have Active Traction Control system (A-TRC) to automatically distribute the power to the tyres with the best grip, while Electronic Brake-force Distribution (EBD) automatically increases the brake force to the wheel(s) that need it most.

Crawl control<sup>1</sup> is available as standard, while VX and Sahara models (optional on GXL) enjoy the added benefit of Kinetic Dynamic Suspension System (KDSS).

- A Multi-Terrain Monitor<sup>1</sup> – VX and Sahara only (Overseas model shown)
- B Engine Start Stop button – GXL, VX and Sahara models only
- C Wireless phone charger<sup>5</sup> – Sahara model only (Overseas model shown)
- D KDSS – Available on VX and Sahara models (Optional on GXL)
- E Crawl control with Turn Assist<sup>1</sup>
- F Anti-lock Braking System
- G Vehicle Stability Control<sup>1</sup>







# Power to reach further than ever before



LandCruiser has been built on a legendary reputation as 'King off the Road,' and delivers rock solid performance. The LandCruiser 200 4.5 litre V8 Twin Turbo diesel engine with intercooler and direct injection is a serious beast in its own right. Muscling up with 200kW of power and 650Nm of heavy duty torque at 1600 – 2600rpm, it delivers all the grunt you'll ever need across this wide brown land.

Power will be smoothly delivered by an automatic 6-speed Electronically Controlled Automatic Transmission (ECT). It features the latest technology to improve performance and efficiency while remaining surprisingly quiet.



# Tough on the outside, safe on the inside.

No matter how rough and tumble it gets the safety features are engineered to help provide you with maximum protection. In the event of a collision, the safety frame and impact absorbing structure works with the upper body reinforcement to absorb and redistribute the impact. All models feature dual-stage SRS airbags along with knee and front side airbags for the driver and front passenger, plus curtain shield airbags for the first and second row.

In GXL, VX and Sahara, full-length curtain shield airbags help protect passengers in the third row. In the VX and Sahara additional second row side airbags have also been added.

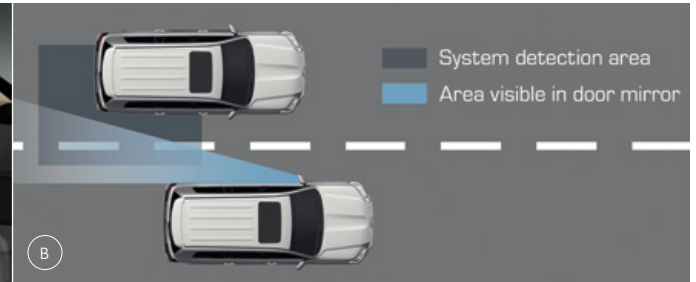
On Sahara, Toyota Safety Sense<sup>1</sup> delivers advanced driver assistance functions. These include Pre-Collision Safety system which applies the brakes and tensions seatbelts when it senses a collision is imminent. Lane Departure Alert provides an audible warning should you drift out of your lane and Active Cruise Control helps maintain a constant distance between you and the vehicle in front. Additionally Automatic High Beam automatically switches between high beams and low beams to assist with optimum night-time visibility.

On VX and Sahara, there's also a Blind Spot Monitor to help alert you of any vehicles in

blind spots and Rear Cross Traffic Alert to help alert you of any vehicles approaching from the side when reversing out of a parking spot.

The safety features on LandCruiser 200 also do more than just help protect people. When towing, the Trailer Sway Control (TSC) uses sensors to help suppress sway triggered by various elements including wind, bumpy roads and the steering operation.

- A SRS airbags – Overseas Sahara model shown  
(1st and 2nd rows shown for demonstrative purposes only)
- B Blind Spot Monitor<sup>1</sup> – VX and Sahara models only
- C Blind Spot Monitor<sup>1</sup> – VX and Sahara models only



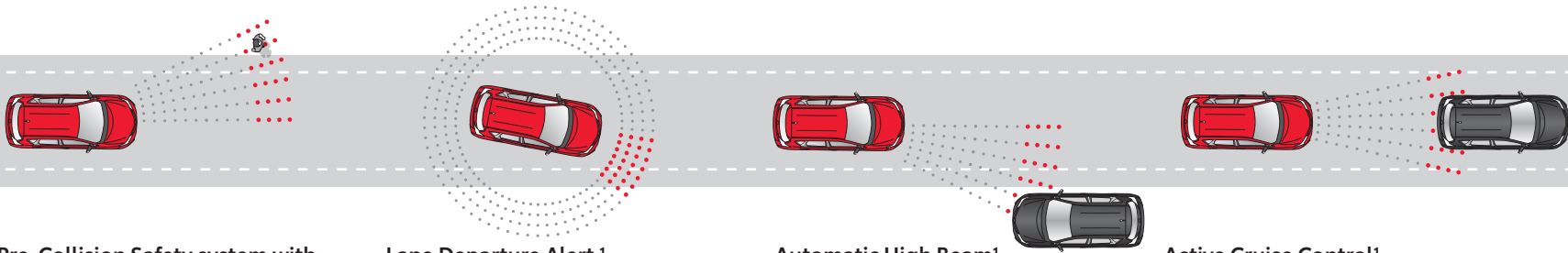


# Toyota Safety Sense<sup>1</sup>

Toyota  
Safety  
Sense

At Toyota, we believe it's simply not enough to say "safety comes first" – we prove it. That's why, in our on-going pursuit of creating ever safer cars, now and into the future, we developed Toyota Safety Sense<sup>1</sup> (TSS). A suite of active safety features designed to help support safe driving and help protect you and your passengers.

LandCruiser 200 Sahara features the latest TSS driver assistance technologies, aiming to recognise and help avoid certain hazards and collisions, giving you and your passengers greater peace of mind wherever you're headed. Please visit [toyota.com.au](http://toyota.com.au) for vehicle and specification information.



## Pre-Collision Safety system with pedestrian detection<sup>1</sup>

Pre-Collision Safety system (PCS) with pedestrian detection was developed to help reduce the likelihood of a frontal collision with cars or pedestrians. Forward Collision Warning (FCW) uses radar to help alert you to imminent threats. During braking, Brake Assist (BA) can help to slow the vehicle by applying additional force. If the driver has not applied the brakes and if the system detects a collision may be unavoidable, Autonomous Emergency Braking (AEB) can apply the brakes to help mitigate the impact.

## Lane Departure Alert<sup>1</sup>

Lane Departure Alert is designed to help prevent vehicles drifting from their lane, by monitoring road markings, and providing a visible and audible alert should it detect any deviation from the lane.

## Automatic High Beam<sup>1</sup>

Using a camera to sense either approaching headlights or the taillights ahead, Automatic High Beam (AHB) aims to help maintain safe and considerate driving by switching between high and low beam as needed.

## Active Cruise Control<sup>1</sup>

Active Cruise Control is designed to help keep a constant distance between vehicles. It uses a milliwave radar to monitor the gap between your vehicle and the one in front, automatically accelerating or slowing down when needed to help you maintain a set distance.

# LandCruiser GX



Vertically hinged barn door tailgates



Snorkel

- 6-speed automatic transmission
- 4.5L V8 turbo diesel engine
- 17" steel wheels
- Snorkel – standard
- Fabric seat material and vinyl floor covering
- Full time 4WD
- Vehicle Stability Control (VSC)
- Active Traction Control (A-TRC)
- Tilt and telescopic adjustable steering column
- 12V accessory connector
- 6.1" touchscreen display, MP3 compatibility,<sup>2</sup> single CD, Bluetooth<sup>®2,7</sup> connectivity and 4 speakers
- Emergency Brake Signal
- Manual seat adjustment and driver's seat power adjustable lumbar support
- 138L total fuel tank capacity – 93L main and 45L sub tank
- Engine immobiliser
- Power windows and mirrors
- Driver and front passenger SRS front, knee and side airbags; Front row and second row curtain shield airbags
- Multi Terrain Anti-lock Braking System
- Crawl control with Off-Road Turn Assist
- Vertically hinged barn door tailgates
- Trailer Sway Control
- 5-seat capacity
- Satellite navigation<sup>3</sup>



Satellite navigation<sup>3</sup>



# LandCruiser GXL



Smart entry and start system



Aluminium side steps

## In addition to, or in replacement of, GX features:

- 17" alloy wheels
- Snorkel – optional extra
- Privacy glass
- Body coloured mirrors
- Horizontal split tailgate
- Driver and passenger illuminated vanity mirrors
- Dual-zone front climate control
- Premium steering wheel with steering wheel switches
- Engine immobiliser and alarm system
- LED low beam headlamps with auto-levelling and LED clearance lamp
- 1 x 12V accessory connector and 220V rear accessory connector
- Smart entry and start system
- Reversing camera
- Front and rear parking sensors
- Optitron instrument cluster with 4.2" Multi Informational Display (MID)
- Variable intermittent wipers – front and rear
- Roof rails
- Kinetic Dynamic Suspension System (KDSS) – optional extra
- LED front fog lamps
- 6.1" touchscreen display, MP3 compatibility,<sup>2</sup> single CD, digital radio<sup>8</sup> functionality, Bluetooth<sup>®2,7</sup> connectivity and 6 speakers
- Aluminium side steps
- 8 seats with grey fabric interior
- Carpet floors
- Rear spoiler



Reversing camera<sup>1</sup>

# LandCruiser VX



Moonroof



Black anodized look side steps

## In addition to, or in replacement of, GXL features:

- Kinetic Dynamic Suspension System (KDSS)
- Leather accented seats
- 18" alloy wheels
- Rain sensing wipers
- Electronically retractable side mirrors
- Moonroof
- Black anodized look side steps
- 4-camera Multi Terrain Monitor
- Woodgrain-look interior highlights
- Bi-LED headlamps with dynamic auto-levelling and LED Daytime Running Lamps (DRLs)
- Dusk sensing headlamp – with auto-off
- Electro-chromatic interior rear-view mirror and exterior side mirrors
- 40/20/40 folding second row seats
- Multi-Terrain Select
- 7-seat capacity
- Stainless steel window moulding
- 4-zone climate control air conditioning
- Blind Spot Monitor (BSM) with Rear Cross Traffic Alert (RCTA)
- 9-speaker, 9" Electro Multi-Vision (EMV) audio with USB, AUX input,<sup>2</sup> digital radio<sup>8</sup> and Bluetooth<sup>®2,7</sup>
- Power adjustable driver and front passenger seats



4-zone climate control air conditioning – overseas model shown



# LandCruiser Sahara



## In addition to, or in replacement of, VX features:

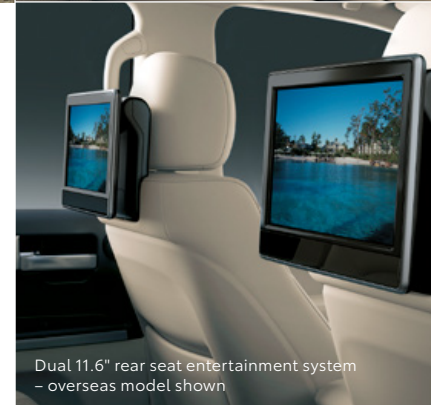
- Power back door
- Heated exterior side mirrors with memory function
- Cool box
- Ventilated front seats
- Wireless phone charger<sup>5</sup>
- Active headrests
- Front and second row outer heated seats
- 3-position driver seat memory
- Electrically adjustable woodgrain-look steering wheel
- Dual 11.6" rear seat entertainment system
- Toyota Safety Sense<sup>1</sup> including Lane Departure Alert, Pre-Collision Safety system with pedestrian detection, Automatic High Beam and Active Cruise Control



Heated and ventilated front seats – overseas model shown



Cool box



Dual 11.6" rear seat entertainment system – overseas model shown

# LandCruiser Sahara Horizon Special Edition



PROOF HQ: T2019-013921\_GTO-001755-01

Inspired by legend, the LC200 Sahara Horizon Special Edition celebrates LandCruiser's 60-year reign as Australia's 'King off the Road'. With the proven strength and dependability to take-on the toughest terrain, plus exclusive refinements and interior comforts, this limited edition LandCruiser states that even today, almost anything is possible.

- Unique design grille with dark finish
- Black headlamps
- Smoked Chrome front fog lamp surrounds
- LandCruiser logo in front and rear puddle lamps
- Premium Black semi-aniline leather accented seats with unique stitching and LandCruiser embossing
- Unique Horizon badge
- Unique premium stitching in leather accented door trims
- Black headliner and chrome accents
- Black leather accented steering wheel with heating



# Colours fit for the King

The LandCruiser 200 is available in eight colours,<sup>9</sup> each a regal finish to an imposing presence. All you need to do is choose the one that best suits your purpose and personal style.



○ Glacier White 040



○ Crystal Pearl<sup>10</sup> 070



○ Silver Pearl<sup>10</sup> 1F7



○ Vintage Gold<sup>10</sup> 4R3



● Graphite<sup>10</sup> 1G3



● Merlot Red<sup>10</sup> 3Q3



● Ebony 202



● Eclipse Black<sup>10</sup> 218

## COLOUR AND TRIM GUIDE

Model	Interior Seat Trim	Glacier White	Crystal Pearl <sup>10</sup>	Silver Pearl <sup>10</sup>	Vintage Gold <sup>10</sup>	Graphite <sup>10</sup>	Merlot Red <sup>10</sup>	Ebony	Eclipse Black <sup>10</sup>
GX	Grey fabric interior (FP11)	●		●	●	●	●	●	●
GXL	Grey fabric interior (YE11)	●	●	●	●		●	●	
VX	Black leather accented interior (LD23)	●	●	●	●	●	●	●	●
	Neutral Beige leather accented interior (LD47)	●	●	●	●		●	●	●
Sahara	Black leather accented interior (LD23)	●	●	●	●	●	●	●	●
	Neutral Beige leather accented interior (LD47)	●	●	●	●		●	●	●
Sahara Horizon SE	Black leather accented interior with black headliner (LD25)	●	●	●	●	●	●	●	●

# Legendary, any way you want it.



Australia's 'King off the Road,' LandCruiser is ready for any challenge. That's why you can choose from a huge range of Toyota Genuine Accessories<sup>11</sup> to help make your mission even easier.

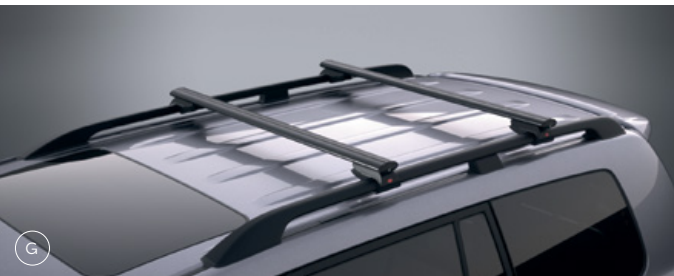
These are the only accessories available for your LandCruiser 200 that have been specifically designed and manufactured by Toyota to fit and function perfectly. And each and every one of them is made legendary LandCruiser tough and backed by our Toyota Warranty.<sup>12</sup>

To find out more, go to [toyota.com.au/landcruiser-200/accessories](https://toyota.com.au/landcruiser-200/accessories)

Sahara in Graphite<sup>10</sup> shown accessorised with alloy bullbar,<sup>13</sup> driving lights, bonnet protector, weathershields, 18" alloy wheels<sup>14</sup> and roof racks. All accessories sold separately.







- A Alloy bullbar<sup>13</sup>
- B Steel bullbar<sup>13</sup>
- C Bonnet protector
- D Nudge bar<sup>13</sup>
- E Tow bar tongue, tow ball and trailer wiring harness<sup>15</sup>  
– each sold separately
- F Rear parking sensors
- G Roof racks – 2-bar set
- H Alloy roof tray  
– roof racks sold separately
- I Weathershields – sold separately
- J All-weather rubber cargo mat – GXL model shown. Dimensions of accessory may vary depending on the model
- K Cargo barrier – GXL model shown. Dimensions and design of cargo barrier may vary depending on the model
- L Rubber and carpet floor mats – carpet floor mats not available on GX
- M Dash Camera





# The Toyota Advantage



When you join the Toyota family, you get so much more than a new car feeling. You get a lifetime of benefits keeping you moving now and well into the future.

Discover your Toyota lifetime of advantages at [toyota.com.au](https://toyota.com.au)

## Discover the freedom of Toyota Access<sup>16</sup>

Toyota Access puts you in complete control when buying a new car, with lower monthly repayments.<sup>17</sup> Drive out of the Dealership with a clear road ahead then drive back a few years later with more options at your disposal than ever before. Whatever stage you're at in life, Toyota Access puts you in the driver's seat with flexibility and assurance. To discover Toyota Access for yourself visit [toyota.com.au/access](https://toyota.com.au/access)

## Capped price servicing<sup>18</sup>

A new Toyota means you don't have to worry about unexpected service costs. Every Toyota comes with a low, capped price service cost for a set number of years/kilometres. Pay the same low capped price from one eligible logbook service to the next for up to three years or 60,000km, whichever occurs first (including Genuine parts, labour and fluids). For the full benefits consult a Toyota Dealer or visit [toyota.com.au/advantage](https://toyota.com.au/advantage)

## Toyota Warranty Advantage

Every new Toyota is built to exceptional standards, and from 1 January 2019, Toyota vehicles are backed by a five year/160,000km kilometre warranty.<sup>19</sup> If your vehicle is properly serviced and maintained per its Warranty and Service Book, we'll extend your engine and driveline warranty for an additional 2 years,<sup>20</sup> giving you peace of mind for years to come. In the event of a claim covered by warranty, you are covered by a 60 day money back

guarantee and 7 years emergency assistance including expenses related to car hire or towing if required. For more information visit [toyota.com.au/owners/warranty](https://toyota.com.au/owners/warranty)

## Finance to get you going

If you need a little help, Toyota Finance<sup>21</sup> can offer you a wide range of vehicle financing options. With Toyota Finance, you'll have the peace of mind of dealing with one of Australia's leading vehicle finance corporations with over 30 years experience. And with a range of flexible products and services to suit almost every need and circumstance, Toyota Finance can help find the right package for you or your business.

## Insurance options

Our Comprehensive Motor Vehicle insurance policy is packed with great benefits including; agreed value cover, new vehicle replacement if your Toyota is written off within the first three years, use of Toyota Genuine Parts, and a Lifetime Repair Guarantee on repairs authorised by Toyota Insurance.<sup>22</sup> And our Factory Approved Extended Warranty Insurance also provides benefits, for more information visit [toyota.com.au/insurance](https://toyota.com.au/insurance)

## Extend your peace of mind

Whether it's a flat tyre, lost keys or a flat battery, Toyota Extra Care Roadside Assist<sup>23</sup> is never more than a phone call away. Available 24 hours a day, seven days a week, our technicians are there to help you get back on the road.



# Disclaimers and Notice

- 1 Driver assist feature. Only operates under certain conditions. Check your Owner's Manual for explanation of limitations. Please drive safely.
- 2 Compatibility and functionality varies depending on device.
- 3 Coverage varies based on vehicle location.
- 4 Wash the exterior & underside of the vehicle with fresh water immediately after driving through seawater to prevent damage.
- 5 Only Qi-supported devices compatible. Refer to device manufacturer. May require additional purchase of accessory to support wireless charging.
- 6 Achieved in test conditions for comparison purposes only. Actual fuel consumption varies depending on driving conditions/style, vehicle condition, load and options/accessories fitted. Source: ADR81/02 combined.
- 7 Bluetooth® is a registered trademark of Bluetooth SIG, Inc.
- 8 Coverage dependent on vehicle location.
- 9 Toyota Australia reserves the right to vary or discontinue the current interior and exterior colours, trims and colour/trim/model combinations. Colours and trims displayed are a guide only and may vary from actual colours due to printing/display process. See your Toyota Dealer to confirm availability when ordering your vehicle.
- 10 Paint featured is an optional extra at additional cost.
- 11 Toyota Genuine Accessories are not applicable to all models/grades. See your Toyota Dealer to confirm Accessories suitable for your vehicle. Toyota Australia uses its best endeavours to ensure material is accurate at the time of publishing. All information must be confirmed with your Toyota Dealer at the time of ordering, as specifications, applicability and availability may change over time. Colours displayed are a guide only and may vary from actual colours due to the printing/display process. Toyota Australia reserves the right to change and/or discontinue, without notice, prices, colours, materials, equipment and specifications. To the extent permitted by law, Toyota Australia will not be liable for any damage or loss incurred from relying on the information and images contained in this material. Consider the mass of your load and your selected accessories to ensure your vehicle will not exceed gross vehicle mass limits. Certain accessories when fitted may require removal of standard equipment, which may be retained by Toyota. Visit [toyota.com.au/vehiclepayload](http://toyota.com.au/vehiclepayload)
- 12 Toyota Genuine Parts/Accessories purchased at & fitted by a Toyota Dealer to a Toyota vehicle purchased on or after 01/01/2019 are warranted for the remainder of that vehicle's Toyota Warranty Advantage period, or 2yrs (whichever is greater). Genuine Parts/Accessories purchased from a Toyota Dealer over the counter are warranted for 2yrs from date of purchase. See [toyota.com.au](http://toyota.com.au) for T&Cs. This warranty does not limit & may not necessarily exceed your rights under the Australian Consumer Law.
- 13 For vehicles fitted with front cameras, fitment of a nudge bar or bullbar will reduce the field of vision.
- 14 Not available on GX models.
- 15 Towing capacity subject to regulatory requirements, tow bar and vehicle design and

## IMPORTANT NOTICE – PLEASE READ:

Toyota Australia uses its best endeavours to ensure material is accurate at the time of publishing. All information must be confirmed with your Toyota Dealer at the time of ordering, as specifications, applicability and availability may change over time. Colours depicted are a guide only and may vary from actual colours due to the printing/display process. Toyota Australia reserves the right to change and/or discontinue, without notice, models, prices, colours, materials, equipment, specifications. To the extent permitted by law, Toyota Australia will not be liable for any damage or loss incurred from relying

towing equipment limitations. Ask your Dealer for Toyota Genuine tow bar capacity and availability details.

- 16 Terms and conditions, fees and charges apply. Toyota Access Guaranteed Future Value products are available to approved customers of Toyota Finance, a division of Toyota Finance Australia Limited ABN 48 002 435 181, AFSL and Australian Credit Licence 392536.
- 17 Lower monthly repayments compared to a similar term with no Guaranteed Future Value (GFV) or equivalent balloon final payment. Total interest charges will be higher if a GFV or balloon final payment is selected.
- 18 Applies to standard scheduled logbook servicing (normal operating conditions). Excludes Government and Rental vehicles. For details see your Toyota Dealer or visit [toyota.com.au/advantage](http://toyota.com.au/advantage)
- 19 Applicable to new vehicles delivered on or after 01/01/2019. The standard Toyota Warranty Advantage period is 5yrs, with unlimited kms, from delivery. Excludes vehicles used for a commercial purpose, such as taxis, hire vehicles and vehicles transporting people or goods for payment including rideshare. The commercial vehicle Toyota Warranty Advantage period is 5 years from delivery or 160,000kms (whichever occurs first). See [toyota.com.au/owners/warranty](http://toyota.com.au/owners/warranty) or your vehicle's Warranty and Service Book for T&Cs. This warranty does not limit and may not necessarily exceed your rights under the Australian Consumer Law.
- 20 Applicable to new vehicles delivered on or after 01/01/2019. The Toyota Warranty Advantage (TWA) extended Engine and Driveline coverage is for 7 years from delivery, provided your vehicle is properly serviced and maintained per its Warranty and Service Book. See [toyota.com.au/owners/warranty](http://toyota.com.au/owners/warranty) for details. The TWA does not limit and may not necessarily exceed your rights under the Australian Consumer Law.
- 21 Approved applicants only. Terms and conditions apply. Toyota Finance is a division of Toyota Finance Australia Limited ABN 48 002 435 181, AFSL and Australian Credit Licence 392536.
- 22 Terms and conditions apply. This advice is general in nature and does not take into account your objectives, financial situation or needs. Before making a decision to purchase any of the insurance products you should consider the appropriateness of the advice taking into account your own objectives, financial situation and needs and refer to the current PDS for the relevant product available from participating Dealers, via our website at [toyota.com.au/insurance](http://toyota.com.au/insurance) or by calling 137 200. Toyota Insurance purchased in a dealership or via the Toyota Insurance National Customer Solutions Centre is issued by Toyota Finance Australia Limited ABN 48 002 435 181, AFSL and Australian Credit Licence 392536. The insurer is Aioi Nissay Dowa Insurance Company Australia Pty Ltd ABN 11 132 524 282, AFSL 443540 (Adica). If Toyota Insurance is purchased online, the issuer and insurer is Adica.
- 23 Toyota Roadside Assist is administered by Toyota Finance, a division of Toyota Finance Australia Limited ABN 48 002 435 181, AFSL and Australian Credit Licence 392536.

on the information and images contained in this material. Distributed nationally (other than in Western Australia) by Toyota Motor Corporation Australia Limited ABN 64 009 686 097. Material distributed in Western Australia by or on behalf of Prestige Motors Pty Ltd (for vehicles) and by Eastpoint Pty Ltd (for parts/accessories). Toyota Australia makes no warranties regarding (and will not be liable for) accuracy of materials distributed in Western Australia. PART NUMBER: TYLC200PACKBRO. PROOF HQ: T2019-013480. GTO-002105. VERSION: FEBRUARY 2020.