

Mirai





OH WHAT A FEELING

You'll feel it with every drive. In every twist and every turn. It's our unwavering commitment to move you, not only today, but well into tomorrow as we relentlessly re-imagine the future of mobility.

With our eyes on the horizon, we're committed to creating a future where all of humankind is empowered with the freedom to move.

Cover: Overseas model shown. Australian specifications and features may differ.

03 Introduction
04 About Hydrogen
06 Fuel Cell Technology
07 Performance
08 Exterior Design
09 Refueling

10 Interior Design
11 Interior Tech
12 Specifications
13 Colour and Trim
14 Toyota Safety Sense
16 Disclaimers

Pioneer a better tomorrow



The All-New Toyota Mirai is a zero emissions vehicle that's driven by the purity of its purpose, taking inspiration from the impossible to help deliver a cleaner world. A better tomorrow. It uses one of the world's most abundant resources, hydrogen, to power Toyota's revolutionary Fuel Cell Electric Vehicle (FCEV). This dynamic advancement in technology produces admirable performance yet emits nothing more than water vapour. Toyota has been working towards a zero emissions society for decades, and now needs pioneers to embrace the Mirai and help define the hydrogen society of tomorrow. Be among the first in Australia to experience how the next generation of mobility will help us create a more environmentally conscious and sustainable future.



The power of hydrogen

Powerful and proven energy



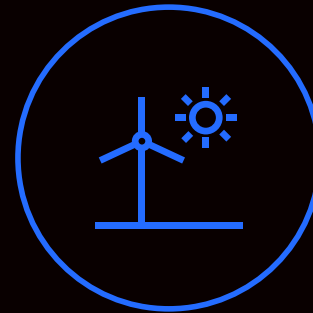
Hydrogen is universal

As one of the world's most abundant sources of energy, hydrogen is a pure and simple fuel. It can be found virtually everywhere and be produced from organic material, waste, liquids and gases containing hydrogen – even from water.



Zero greenhouse emission

Hydrogen is lighter than air and leaves no carbon emissions. Wider adoption of hydrogen powered FCEV technology is envisaged to play a key part in the quest to help create a cleaner environment.



Clean to produce

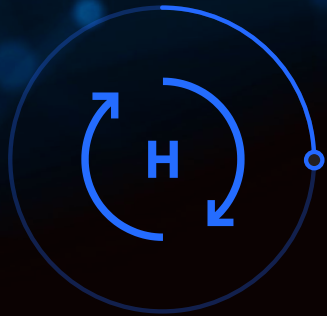
Hydrogen can be produced from water via electrolysis using renewable energy or gasification from organic material (such as crops and organic waste) and from non-renewable sources like natural gas.



Safely stored as liquid or gas

Hydrogen storage has now advanced to ensure it is safely kept in either liquid or gas form. Using the latest technology and pumping systems also helps ensure the safety of hydrogen in maintaining a continuous and reliable supply.

How a Fuel Cell works



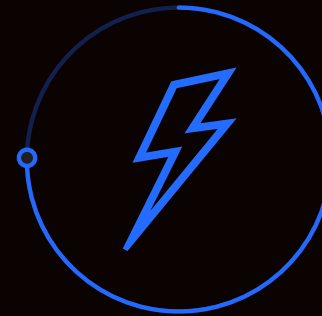
1. Hydrogen

Hydrogen is stored inside three triple-layer carbon-fibre wrapped and polymer lined tanks that are incredibly strong and can store enough fuel for extended driving.



2. Oxygen

The large front grille takes in the air from the atmosphere and delivers it to the Fuel Cell.



3. Electricity

In the Fuel Cell, hydrogen and oxygen combine in a closed chemical reaction to create the electricity required to power the vehicle.



4. Emits only water

The only by-product of a Fuel Cell Electric Vehicle using oxygen and hydrogen is water vapour that is released harmlessly from the rear outlet.

Pure performance



Impressive power

The Fuel Cell and lithium battery work seamlessly together to produce up to 134kW of lively power and 300Nm of torque from the electric motor. Combined with rear wheel drive, Mirai delivers instant acceleration for a truly spirited and highly responsive drive.



Long distance capability

With three storage tanks, Mirai offers a driving range up to 650km¹ (depending on the conditions) to really take you places.



Fast and simple refuelling

With the three hydrogen tanks taking around 3 to 5 minutes to refill using a commercial refueller, Mirai will have you back on the road in no time.

Pure elegance

• • • • •

Mirai, meaning 'future', demonstrates how elegance can harmonise effortlessly with innovation. Aerodynamically designed and inspired by the fluidity of water, the dynamically sleek exterior boasts large 19" alloy wheels placed around a rigid chassis and a body that incorporates environmentally friendly materials. The wide front and rear stance combine with a low centre of gravity to help ensure surefooted control, while the large eye-catching front grille allows abundant oxygen intake to help power the Fuel Cell.



Pure convenience



Toyota is rolling out hydrogen refueling infrastructure to support the All-New Mirai. Melbourne's hydrogen station is operational, with more due to open soon across the country. A mobile refuelling tanker is also operational to support the Mirai fleet. At the pump, instead of inserting the nozzle into the filler you simply place it over the top, then lock it place and squeeze the handgrip. To prevent hydrogen from leaking, the pump will not start unless the nozzle is properly engaged. The Mirai computer will also disable the vehicle and communicate with the pump to ensure a safe and efficient fill. Once complete, simply release the nozzle and return to the holder.



Overseas hydrogen refueller shown. Not currently available in Australia.
Overseas model shown. Australian specifications and features may differ.



Pure space

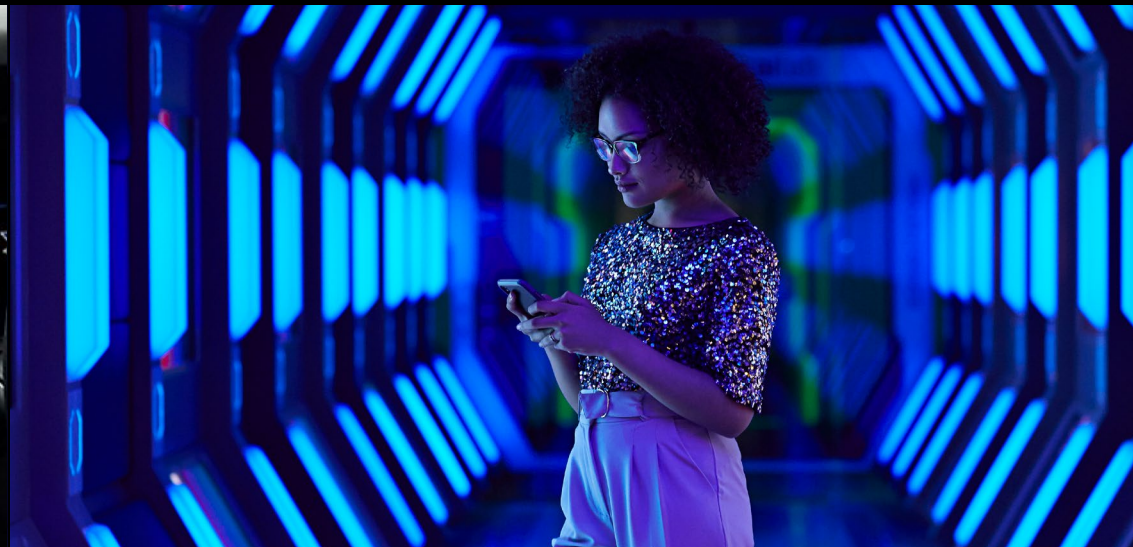
Breathe easy. Inside Mirai you'll discover a fresh dimension of dynamic calm. The metallic silver dash accents with contrasting synthetic leather edges wraps purposely around the driver to provide the ultimate driving cockpit, with the centralised instrument cluster and switches carefully placed to provide optimal control. The front passenger side has been designed to provide a more expansive space to relax and enjoy the journey.

You'll be immersed in premium black synthetic leather seats with multi-way power adjustment. Take hold of the leather accented steering wheel to enjoy an exciting and pure driving experience like no other.

Pure thinking

The technology inside every Mirai is designed to help deliver pure enjoyment through smarter and more intuitive connectivity. The 12.3" Toyota Multi Operation Touch (TMOT) widescreen display controls multiple functions including the 14-speaker premium JBL®² audio system, the DAB+ digital radio,³ satellite navigation⁴ and air conditioning. Seamlessly connect with your smartphone using Apple CarPlay⁵ and Android Auto™.⁶ to play your favourite music, take calls, send texts and more using voice recognition commands.

The 8" TFT colour display provides digital information on speed, fuel level, ambient temperature and more. It incorporates a 4.2" Multi-Information Display (MID) that delivers further vehicle, trip, audio and economy detail. You can also see how much air Mirai is purifying while you drive on the Cumulative Air Cleaned Display.



Overseas model shown. Australian specifications and features may differ.

Mirai



- Hydrogen Fuel Cell
- Electric motor – 134kW power, 300Nm torque
- 19" alloy wheels
- 12.3" multimedia display
- 14-speaker premium JBL®² audio system
- Apple CarPlay®⁵ and Android Auto™,⁶
- 8" TFT meter incl. 4.2" Multi-Information Display (MID)
- 4x USB ports⁷ – 2x front and 2x rear

- LED headlamps
- LED Daytime Running Lamps (DRLs)
- LED rear combination lamps
- Rain sensing wipers
- Electronic Park Brake
- Electrochromatic mirror
- Leather accented steering wheel
- Synthetic leather seats
- Dual zone air conditioning

- Heated and electronically retractable exterior side mirrors
- Tyre pressure warning
- Smart entry and start system
- Power adjustable seats – Driver 8-way, passenger 4-way
- Satellite navigation⁴
- Rear privacy glass
- DAB+ digital radio³

Colour your Mirai

From powerful statements in style to smooth and subtle tones, Mirai has a range of colours⁸ to match your mood. Force Blue has been developed exclusively for Mirai and features a uniquely deeper, eye catching colour saturation. Inside you'll enjoy the refined ambience of a premium yet sporty black trim and finish.

COLOUR AND TRIM GUIDE		Arctic White ⁸	Silver Rush ⁸	Liquid Metal ⁸	Tarmac Black ⁸	Force Blue ⁸	Dynamic Blue ⁸	Feverish Red ⁸
Grade	Interior Seat Trim	●	●	●	●	●	●	●
Mirai	Black synthetic leather accents (EA20)	•	•	•	•	•	•	•



● Arctic White⁸ 090



● Silver Rush⁸ 1J6



● Liquid Metal⁸ 1L5



● Tarmac Black⁸ 219



● Force Blue⁸ 8Y7



● Dynamic Blue⁸ 8S6

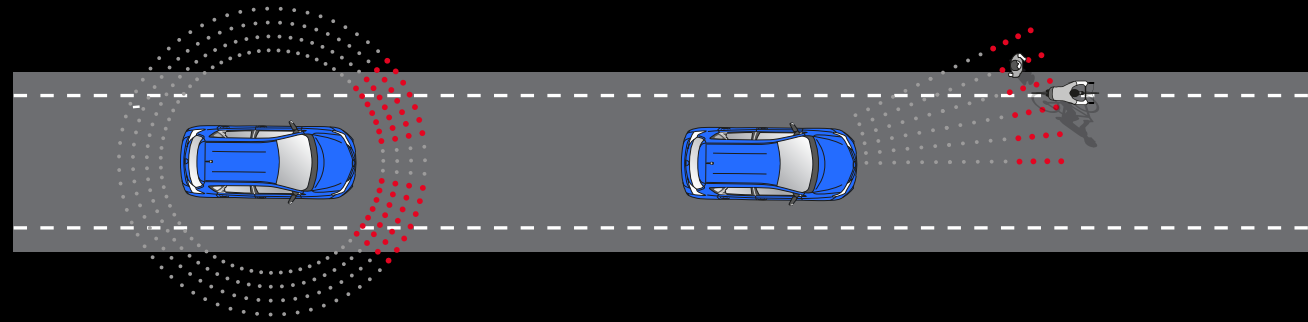


● Feverish Red⁸ 3U5

Toyota Safety Sense

At Toyota, we believe it's simply not enough to say "safety comes first" – we prove it. That's why, in our ongoing pursuit of creating ever safer cars, now and into the future, we developed Toyota Safety Sense (TSS).⁹ A suite of active safety features designed to help support safe driving and help protect you and your passengers.

Mirai features the latest TSS driver assistance technologies, aiming to recognise and help avoid certain hazards and collisions, giving you and your passengers greater peace of mind wherever you're headed. Please visit toyota.com.au for vehicle and specification information.



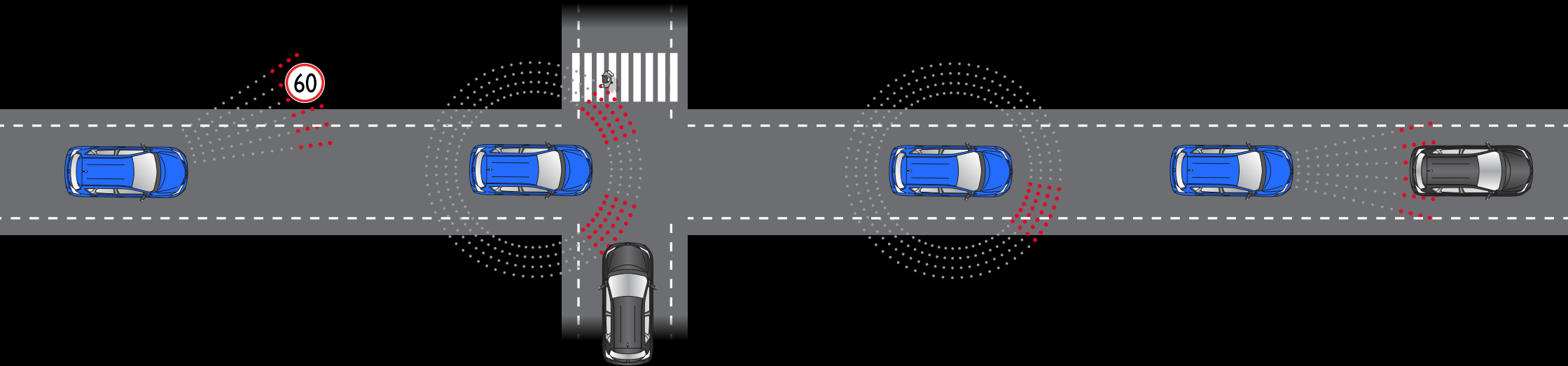
Lane Trace Assist

When driving on highways and freeways, Lane Trace Assist uses a camera to detect lane markings when cruise control is active. It is designed to alert you and provide steering assistance to help avoid drifting, and keep you centred in your lane.⁹

Pre-Collision Safety (PCS) system with pedestrian and daylight cyclist detection

Pre-Collision Safety system with pedestrian and daylight cyclist detection is a multi-stage warning system. Using an integrated camera and radar to help detect other vehicles in front of you, the PCS is designed to assist the driver where there is a likelihood of frontal collision with cars and pedestrians during day or night, or cyclists during the daytime. PCS includes a visible and audible alert of possible collisions, additional braking force to assist when you're braking, and if a collision appears to be unavoidable automatic braking to help mitigate impact.⁹

**Toyota
Safety
Sense**



Road Sign Assist

Road Sign Assist was developed to help recognise certain road speed signs and provide information to you. It displays the most recently recognised speed limit on the Multi Information Display.⁹

Intersection Turn Assist

Intersection Turn Assist helps prevent accidents at intersections by detecting oncoming cars and pedestrians crossing the street when the vehicle is turning.⁹

Lane Departure Alert with steering assist

Lane Departure Alert with steering assist is designed to help prevent vehicles drifting from their lane by monitoring road markings, and providing a visible and audible alert should it detect any deviation from the lane. It may also apply additional steering force if needed to help you stay in your lane.⁹

Active Cruise Control

Active Cruise Control is designed to help keep a constant distance between vehicles. It uses a millimetre wave radar to monitor the gap between your vehicle and the one in front, automatically accelerating or slowing down when needed to help you maintain a set distance.⁹

Disclaimers and Notice

- 1 Achieved in test conditions for comparison purposes only. Actual fuel consumption varies depending on driving conditions/style, vehicle condition, lead and options/accessories fitted. Source: WLTP 0.79kg/100km.
- 2 JBL® is a registered trademark of Harman International Industries, Incorporated.
- 3 Coverage dependent on vehicle location.
- 4 Coverage varies based on vehicle location.
- 5 CarPlay® and Siri® are trademark of Apple, Inc. registered in the U.S. and other countries. Requires compatible device, USB connection, mobile data, network reception and GPS signal. Mobile usage at user's cost. Apps subject to change. For details see toyota.com.au/connected
- 6 Android Auto™ is a trademark of Google LLC. Requires compatible device, USB connection, mobile data, network reception and GPS signal. Mobile usage at user's cost. Apps subject to change. For details see toyota.com.au/connected
- 7 Compatibility and functionality varies depending on device.
- 8 Paint featured is an optional extra at additional cost.
- 9 Driver assist feature. Only operates under certain conditions. Check your Owner's Manual for explanation of limitations. Please drive safely.

IMPORTANT NOTICE – PLEASE READ:

Toyota Australia uses its best endeavours to ensure material is accurate at the time of publishing. All information must be confirmed with your Toyota Dealer at the time of ordering, as specifications, applicability and availability may change over time. Colours depicted are a guide only and may vary from actual colours due to the printing/display process. Toyota Australia reserves the right to change and/or discontinue, without notice, models, prices, colours, materials, equipment, specifications. To the extent permitted by law, Toyota Australia will not be liable for any damage or loss incurred

from relying on the information and images contained in this material. Distributed nationally (other than in Western Australia) by Toyota Motor Corporation Australia Limited ABN 64 009 686 097. Material distributed in Western Australia by or on behalf of Prestige Motors Pty Ltd (for vehicles) and by Eastpoint Pty Ltd (for parts/accessories). Toyota Australia makes no warranties regarding (and will not be liable for) accuracy of materials distributed in Western Australia. PHQ: T2021-015720. TMC-004012. VERSION: APRIL 2021

