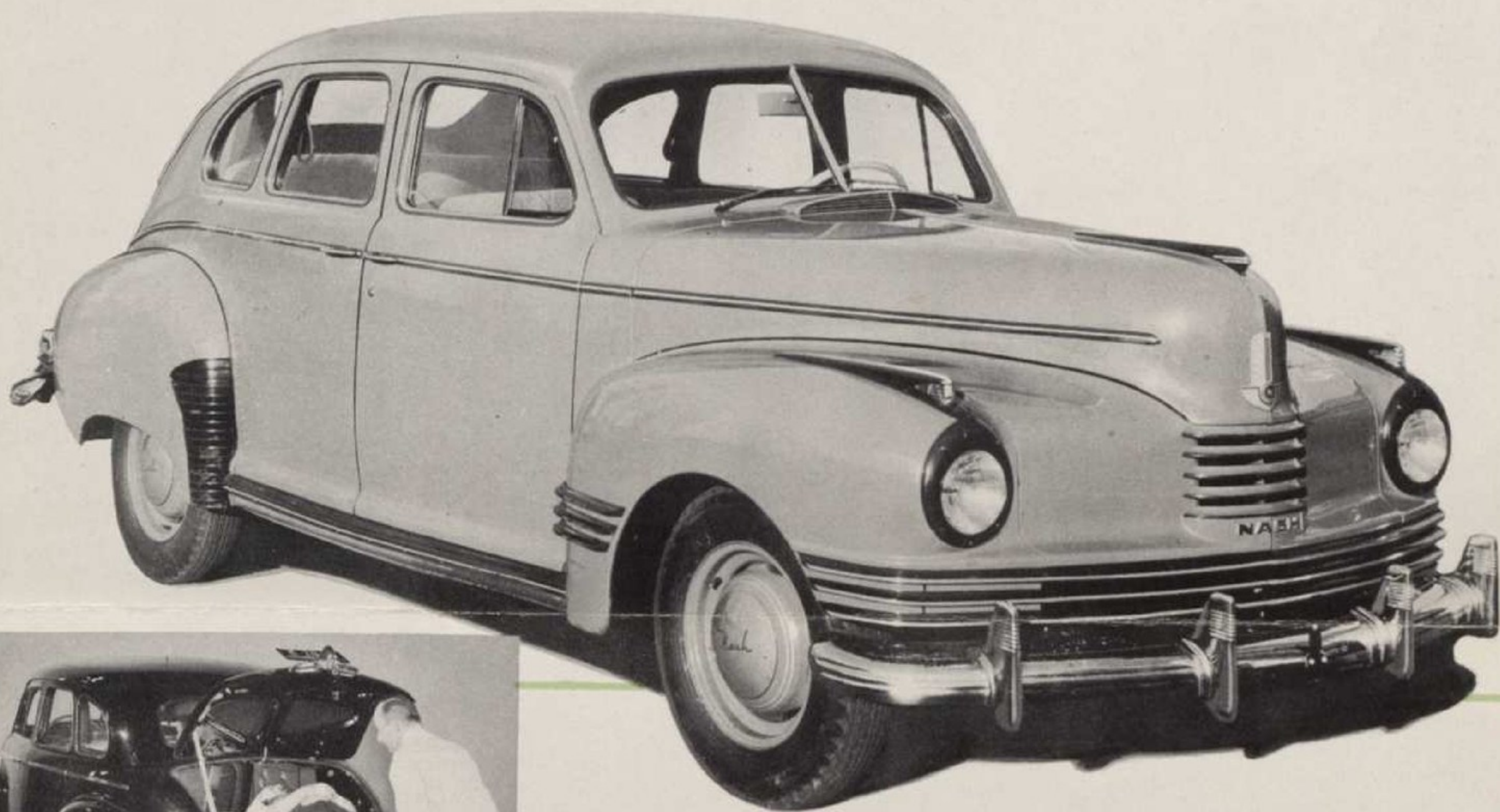


**DOCTORS!**

**AIR-WARDENS!**

**POLICE & FIRE OFFICIALS!**

## THIS EMERGENCY-AMBULANCE NASH SEDAN IS THE PERFECT CAR FOR YOU!



AMAZING GASOLINE ECONOMY, RECORD-BREAKING  
TIRE-MILEAGE AND LOW OIL CONSUMPTION  
MAKE IT EVEN MORE "THE CAR OF THE HOUR"

Here's a car that's really built to answer the needs of the day . . . a car that does *double duty* for national defense.

This big, roomy 1942 Nash Ambassador "600" Sedan has already revolutionized motoring with its sensational gasoline economy of up to 25 and 30 miles on a gallon at moderate highway speed. Thousands of these cars have gone *over 500 miles on a tankful of gasoline!*

And its new kind of one-piece body with lighter but stronger construction has eliminated dead weight, and lessened wear and tear on tires. Result is — one set of tires goes 20% to 25% farther!

At a time when the conservation of gasoline and rubber means so much to our armed effort, these vital savings make Nash obviously the car of all cars to drive.

But Nash's contribution to the nation only begins with its amazing savings. In your hands it contributes also to the public safety, because it offers the means to help save human lives — with a *special emergency ambulance feature!*

If you are eligible to purchase a new car today — be sure to see the 1942 Nash — and get a demonstration of how it can be converted from a luxurious passenger car to an *emergency ambulance* in only a few minutes' time.

### See Your Nash Dealer For Information Concerning Auto Purchase Certificates

If you are a doctor, nurse, an executive or a worker engaged in public health or national defense work — and need a new car — you are now eligible to apply for an auto purchase permit. This ruling also applies to certain classes of farmers and builders, and to many other persons whose jobs are vital to the winning of the war. For complete information regarding your eligibility, see your nearest Nash dealer. He will gladly assist you in making out all the necessary application forms.



# IF YOU ALREADY OWN A NASH SEDAN . . . YOUR CAR CAN HELP IN NATIONAL DEFENSE



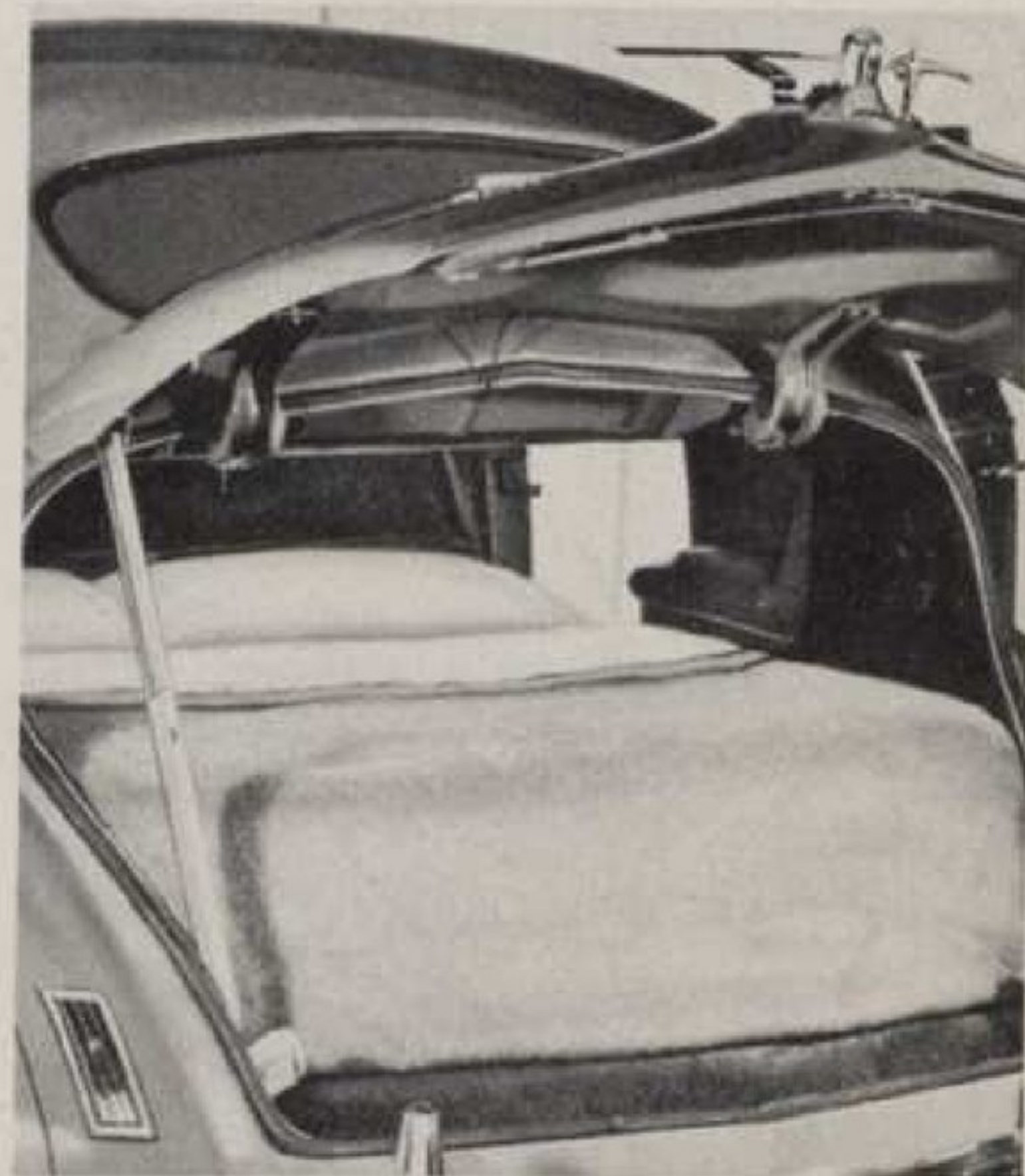
THE ILLUSTRATION ABOVE shows the installation of the emergency ambulance equipment. The appearance of the car is not altered in any way and it can be instantly converted into an ambulance.

If you are already a Nash owner — of any 2-door or 4-door sedan, 1936 model or later — your present car can be converted to this vital emergency use. Many Nash used cars are available at your Nash Dealer's for this purpose.

Two types of equipment are available. The ambulance conversion equipment described inside this folder fits all 1941 and 1942 model Nash sedans, and the famous Nash "Sedan Sleeper" bed, a long-time favorite with sportsmen and vacationers, is a feature that is available in *all* Nash sedans built since 1936.

Pictured on this page are two unretouched photographs showing installation of both types of equipment.

Nash owners are urged to contact their Nash dealers and investigate the possibilities of making their cars ready for vital emergency war work.



ANY NASH SEDAN, with bed conversion — can well be used for an ambulance in emergencies. All that is needed in the way of special equipment is a folding canvas stretcher, blankets, first-aid kit, etc.





# FROM 6-PASSENGER SEDAN TO AMBULANCE

Here's How a Nash Can Aid in National Defense



**BIG ROOMY REAR SEAT** accommodates three passengers. Installation of the ambulance equipment in no way changes the luxurious Nash interior appearance. When not in use, ambulance equipment cannot be seen.



**IN EMERGENCIES** the rear seat cushion is pulled forward on compartment floor, and the rear seat back is raised, providing room for the special ambulance equipment. Taken only one minute, one man to do this.



**STRETCHER TRACK** is shown in place, one end resting on rear seat cushion and other end supported by special plywood shell over spare tire in trunk compartment. Shell is secured in place by a single winged nut.



**ROLLER STRETCHER** in position on stretcher track. Stretcher is anchored into place by means of a bracket and winged nut. Special straps on stretcher hold patient securely while car is in motion.



**SPECIAL "LIFTING" STRETCHER** is used whenever transferring patient from ground to Roller Stretcher if he suffered internal injuries. Using "lifting" stretcher, patient is rolled on side, lifting stretcher slipped under him.



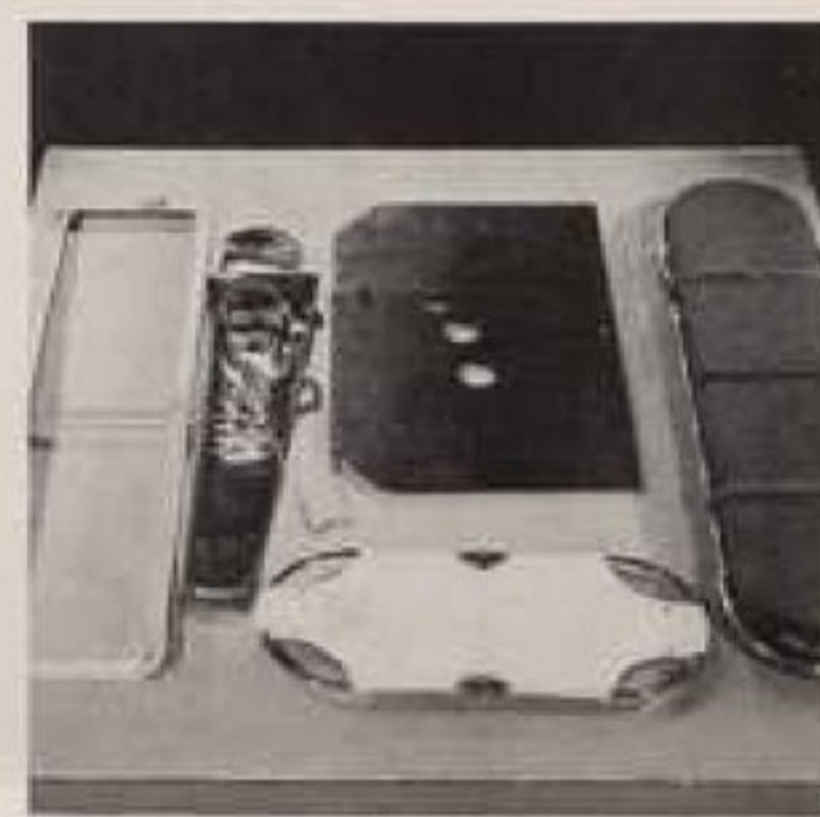
**TRANSFER OF PATIENT** to roller stretcher. Patient is strapped down and is ready to be placed in Nash ambulance. Nash's soft coil springs on all four wheels assure safe, gentle transportation over roughest roads.



**ROLLING STRETCHER INTO CAR.** Stretcher is set on tracks, then rolled into place. Winged nut locks stretcher in place, prevents it rolling backwards. Trunk door is lowered and Nash ambulance is ready to proceed.



**ON THE WAY TO HOSPITAL.** Attendant has room to sit beside patient in rear. Nash front seat is wide enough to accommodate comfortably two other persons beside driver. Nash is the roomiest car in its price field.



**EMERGENCY AMBULANCE EQUIPMENT** includes (1) Folding Stretcher Truck; (2) Leg and Arm Splints; (3) Trunk Shell; (4) Lifting Stretcher; (5) Roller Stretcher and convenient dust-proof carrying case.



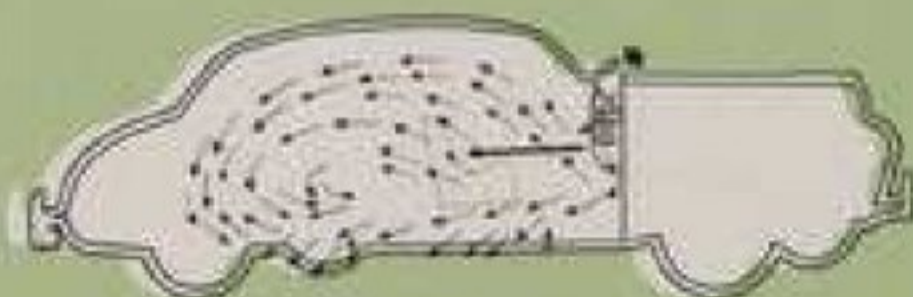
**WHEN NOT IN USE** all this ambulance equipment conveniently packs away neatly in trunk compartment, leaving rest of car free for normal use—a dual-purpose car for emergencies—makes up in one minute flat!

## FAMOUS NASH "WEATHER EYE" SYSTEM SAFEGUARDS HEALTH WITH CONDITIONED AIR

No matter how cold, rainy or changeable it is outside, Nash's famous Weather Eye System keeps car interior healthfully warm with constantly circulated *fresh conditioned air* . . . up to 600 cubic feet a minute, with all windows closed! Prevents drafts, ends carbon monoxide danger, rids car of dust, dirt, stale air . . . makes driving in winter as safe and pleasant as in the spring. There is no other heating or ventilating system like it in any other car today.



"Weather Eye" System draws in fresh air through fixed cowl ventilator, filters it free of dust, etc., then heats it to whatever degree of comfort you desire. Gives you uniform heat, front seat and rear.



Real air-conditioning principle is used by Nash Conditioned Air System to pull fresh air in and build up pressure to push used air out through edges of doors and windows. Old type heating systems (below), as still used in most cars, simply recirculate stale re-heated air inside car, suck in cold air and drafts from outside.



## NASH CARS ARE BUILT TO LAST LONGER, COST LESS TO RUN!

Nash has always built a good car—but this year's Nash is the best! That's because the new 1942 Nash Ambassadors were purposely designed to see America safely through this wartime emergency. *To save you gasoline*—Nash has built its intake manifold *inside* the engine for greater uniformity in temperature. You use leanest gas mixtures all year 'round, get sparkling performance every day. *To save your tires*, Nash has eliminated hundreds of pounds of useless dead weight by adapting a new principle in car construction—body and frame are solidly welded into one lighter, stronger, twist-proof unit. *To save you body repairs*, Nash has Bondcrized every bit of body and fenders against rust. *To give you smoother, trouble-free per-*

*formance*, Nash has precision-balanced its crankshaft, flywheel, clutch plate, by *radio control!* *To prolong engine life*, Nash has rifle-bored all connecting rods for complete lubrication of cylinder and piston pin.

With engineering improvements like these, your Nash is built to save you money every mile you drive and "stay new" for years to come!

**Friendly Nash Dealers, factory-trained mechanics, and complete parts stocks are conveniently located to serve you.**



1942

# HERE'S A DOUBLE-DUTY CAR FOR NATIONAL DEFENSE

A ROOMY, ECONOMICAL  
PASSENGER CAR . . .



BECOMES A  
COMFORTABLE EMERGENCY  
AMBULANCE!

