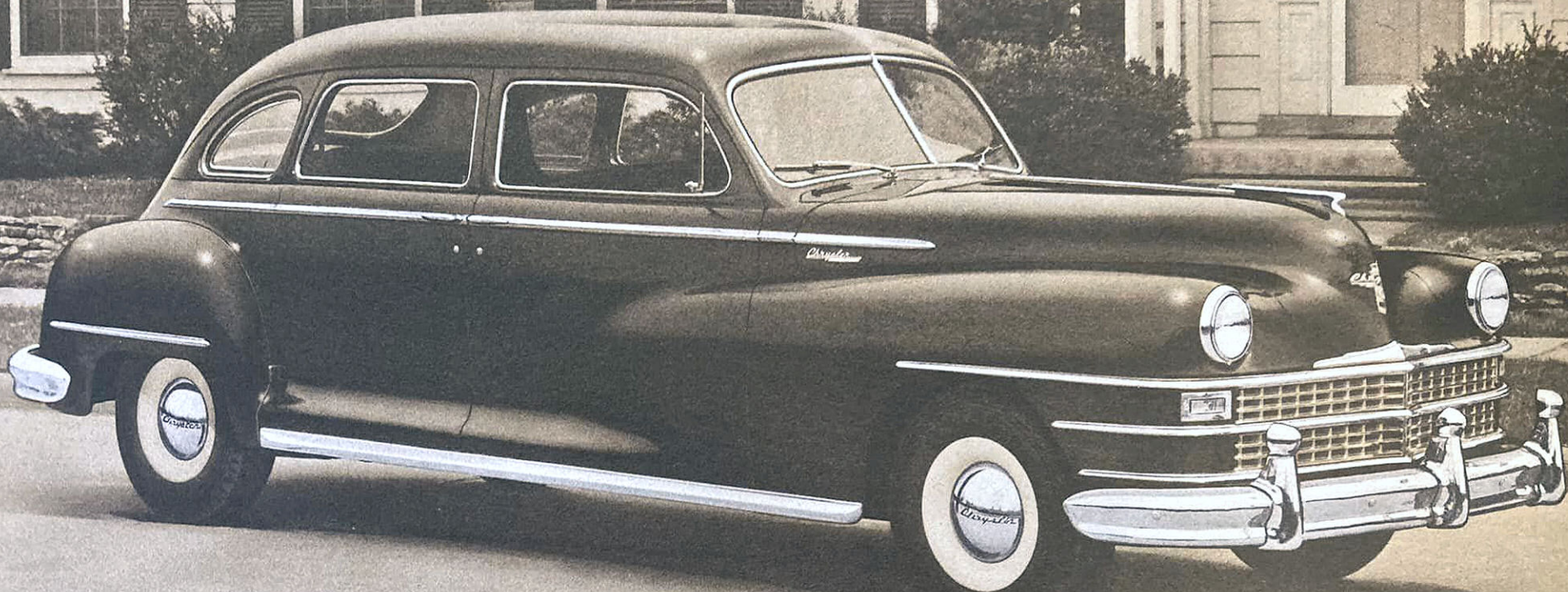




The Beautiful

CHRYSLER ROYAL *and* WINDSOR

SEDAN AND LIMOUSINE

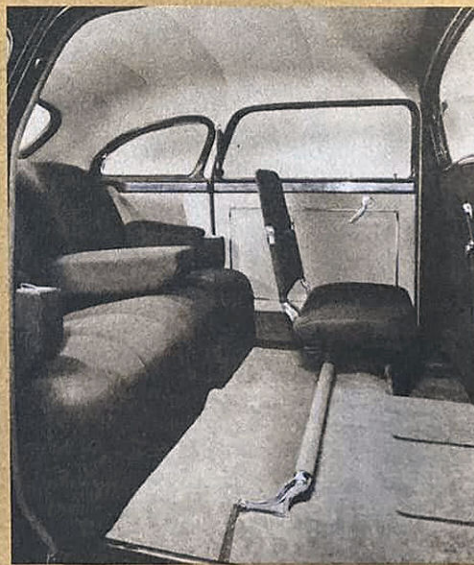


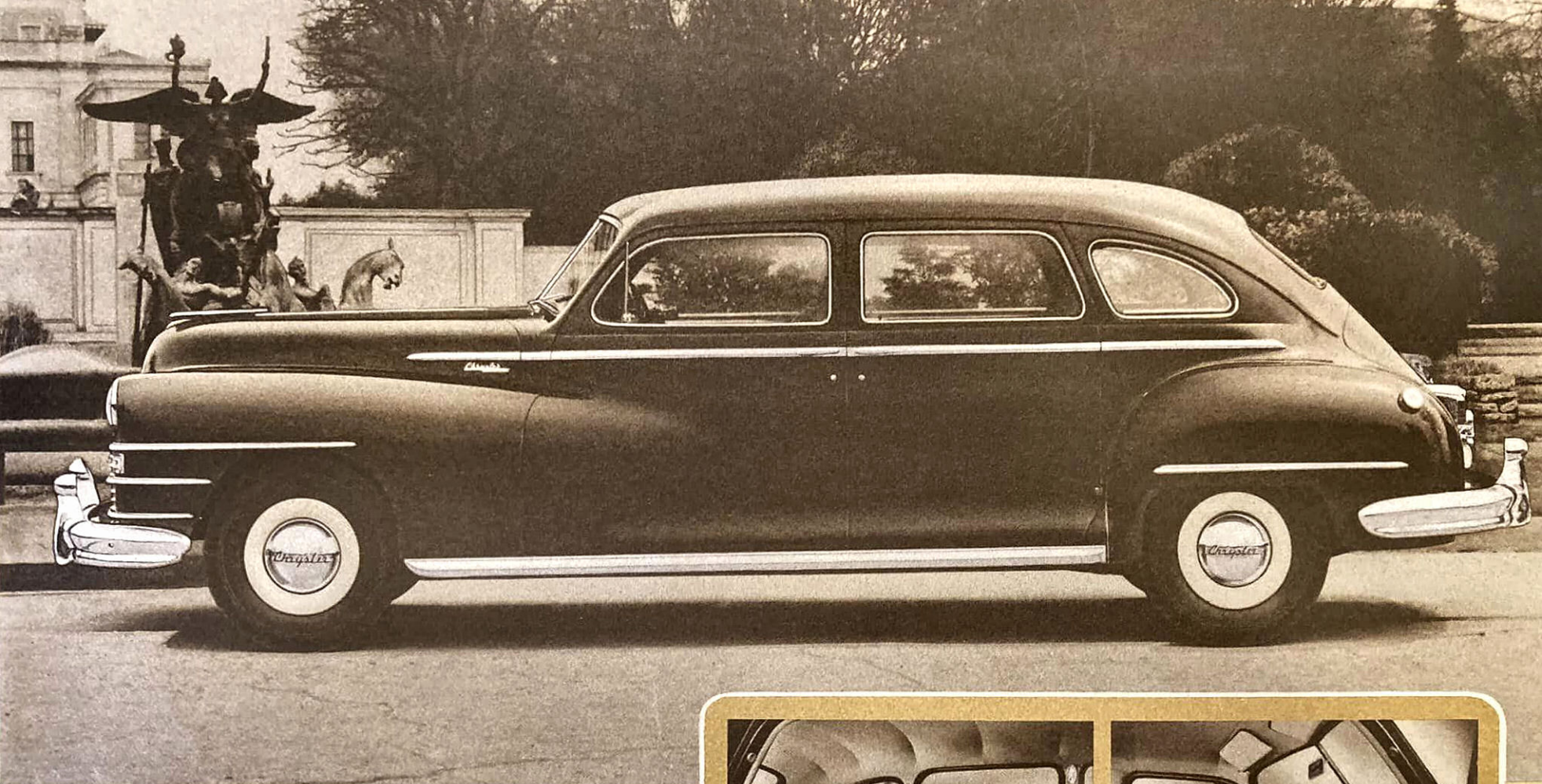
The Royal—8-Passenger Limousine

Both Body Styles, the Sedan and the Limousine are available in the Chrysler Royal and Windsor Models. And essentially, the cars are the same, with the exception of the added appointments and refinements in the interiors of the Windsor bodies.

The Royal and Windsor chassis and engines are identical, each having all of the many engineering features which make the present Chrysler *the finest car Chrysler has ever built.*

The famous Spitfire High Compression Engine of 114 horsepower; gyrol Fluid Drive, with Hydraulically Operated Transmission; Safety Rim Wheels and Super-cushion Tires; Superfinished Engine Parts; Safe-Guard Hydraulic Brakes; and other features too numerous to mention here, make the Royal and Windsor Models cars of superb performance, utmost safety and unexcelled economy.





The Windsor—8-Passenger Sedan

Both the Sedan and Limousine have wide, comfortable front and rear seats that easily accommodate three persons each, and the auxiliary seats, which fold forward out of the way, will carry an additional two passengers in solid comfort.

In the Limousine, the seat cushion in the front compartment is smartly tailored in genuine black leather, and there is a glass partition between the front and rear compartments assuring the utmost privacy to the owner and passengers.

The beauty and refinement of the interiors are evident in the photographs, however, a full appreciation of the completeness of the appointments, and the smartness of the interiors can be had only by a close inspection of these Beautiful Chryslers.



S P E C I F I C A T I O N S



ENGINE—Spitfire High Compression, "L" Head 6 cylinder. Bore $3\frac{1}{4}$ ", Stroke $4\frac{1}{2}$ "; Piston Displacement 250.6 cu. in. Horsepower 114 H. P. at 3600 R. P. M. Taxable Horsepower, 28.36. Floating Power Engine Mountings; Full Flow Oil Filter; Super-finished Engine Parts; Exhaust Valve Seat Inserts; Rotor type Oil Pump; Aluminum Alloy Pistons; Crankcase Ventilation; Oil Bath Air Cleaner; Air Cooled Generator; and other engineering features.

BRAKES—Chrysler Lockheed Safe-Guard Hydraulic 4-wheel brakes, internal expanding—the finest, safest brakes ever designed. Drum diameter—11 inches. Brake lining—Centrifuse Molded Asbestos—width, 2 inches. Twin cylinders on each front brake, single cylinder on each rear brake. **PARKING BRAKE**—located on Propeller Shaft—operated by hand lever under instrument panel.

BATTERY—Willard, 6 volt, 17 plate, 120 ampere hour capacity at 20 hour discharge rate.

CAPACITIES—Tank, 17 gallons—Cooling System, $4\frac{1}{4}$ gallons—Oil reservoir, 5 quarts.

CRANKSHAFT—Drop forged steel—length, $31\frac{1}{2}$ inches—statically and dynamically balanced—Vibration Damper—removable, precision-type, babbitt lined bearings.

CARBURETOR—Carter (Ball & Ball)—equipped with intake silencer integral with heavy duty, Oil Bath Air Cleaner. Automatic, electric choke control.

SHOCK ABSORBERS—Hydraulic, double acting, telescopic, both front and rear.

SPRINGS—Front—Coil, Amola Steel. Rear—Semi-elliptic, with tapered leaf ends and grooved leaves. Mounted in rubber bushings front and rear.

TIRES—Super-cushion. Size 8.20 x 15 inches. Four Ply, Deluxe Rib Tread. Inflation Pressure—front and rear—24 pounds (No More—No Less—for best performance).

WHEEL BASE—139 $\frac{1}{2}$ inches. Overall length, 228 $\frac{3}{4}$ inches. Overall width 77 $\frac{3}{4}$ inches.

WHEELS—Steel Disc, with Chrysler Safety Rim. Rim size, 6.00 x 15.

All Specifications Subject to Change Without Notice.

CHRYSLER SALES DIVISION, DETROIT