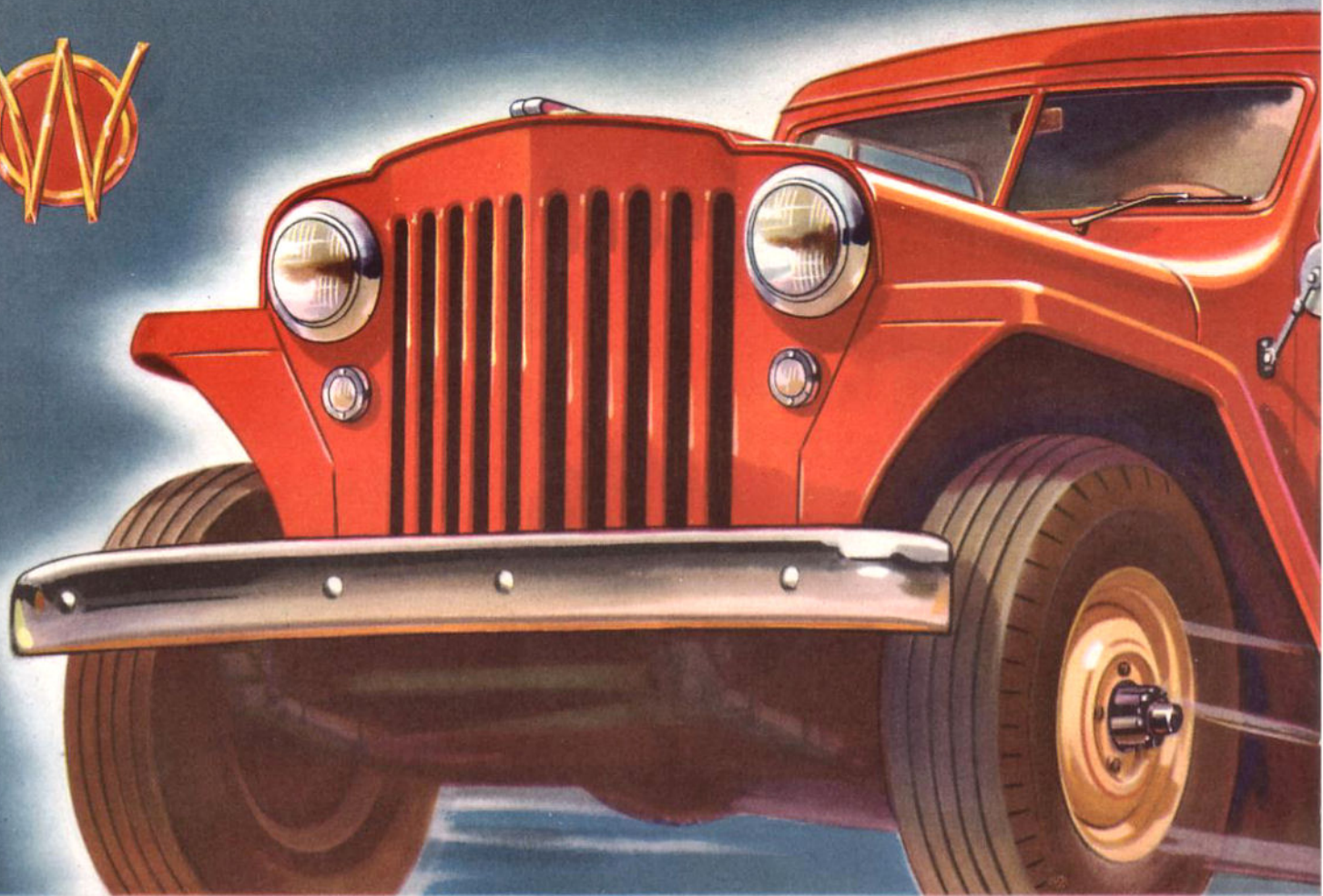


AMERICA'S MOST USEFUL VEHICLES

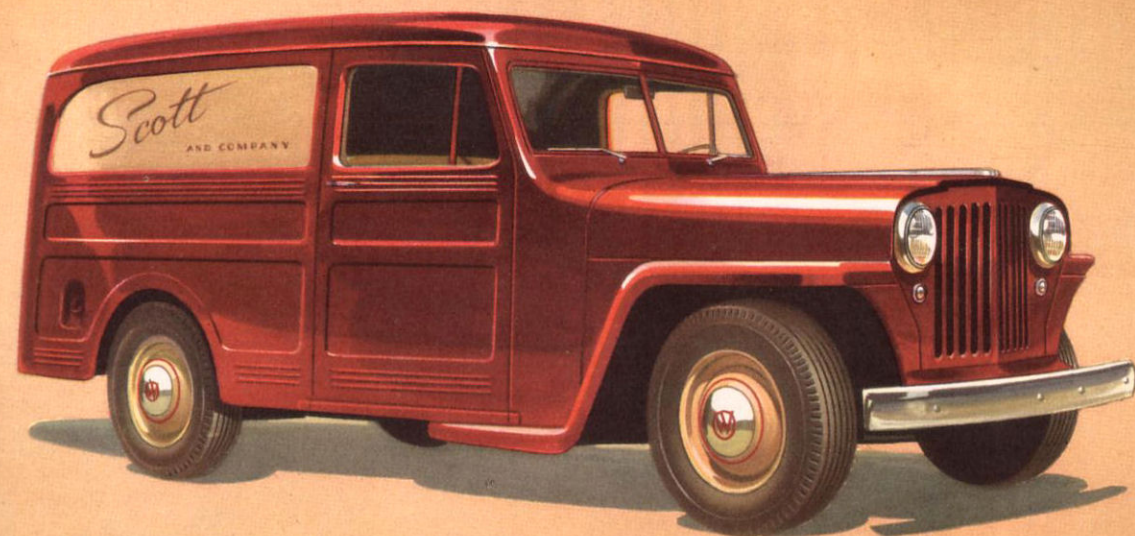


WILLYS-OVERLAND BUILDS 5 GREAT LINES OF

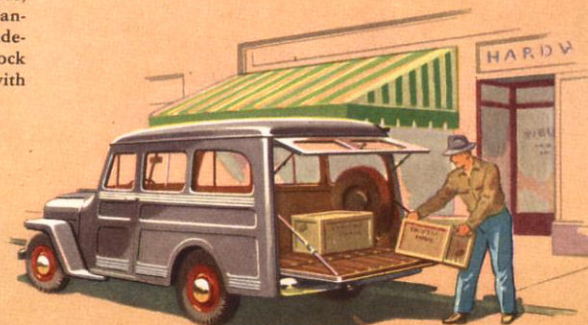
'Jeep' Trucks

- 2- OR 4-WHEEL DRIVE MODELS • 4700-5300 LBS. GROSS VEHICLE WEIGHTS
- $\frac{3}{4}$ - TO 1-TON NOMINAL PAYLOADS • $\frac{1}{2}$ -TON PAYLOAD 'JEEP' PANEL DELIVERY
- $\frac{1}{2}$ -TON PAYLOAD 'JEEP' UTILITY WAGON • 4-WHEEL-DRIVE UNIVERSAL 'JEEP'

DESIGNED FOR UTILITY ... ENGINEERED FOR LOW OPERATING AND MAINTENANCE COSTS



'JEEP' PANEL DELIVERY ... A distinctive panel truck on 104-inch-wheelbase chassis, powered by the highly efficient 'Jeep' Engine. Gross vehicle weight, 4,000 lbs.; rated payload up to ½ ton. The 'Jeep' Panel Delivery is distinguished by maneuverability in traffic and ready adaptability to a wide range of service requirements. Extremely low cost of operation and spacious, all-steel panel body make it ideal for grocers, florists, dry cleaners, laundries, tobacco jobbers, and specialty shops. With independently sprung front wheels and airplane-type hydraulic shock absorbers, this model combines passenger car comfort with truck ruggedness.



'JEEP' UTILITY WAGON ... 104 inch-wheelbase, ½-ton payload. Powered by the economical 4-cylinder 'Jeep' Engine. A practical utility car, with 98 cubic feet of load space and smart appearance for those who want something out of the ordinary. Converts easily into a courtesy car by the installation of optional extra seats that carry up to seven people. With all-steel body and top, passenger car comfort, and a wide range of usefulness the 'Jeep' Utility Wagon is highly versatile.

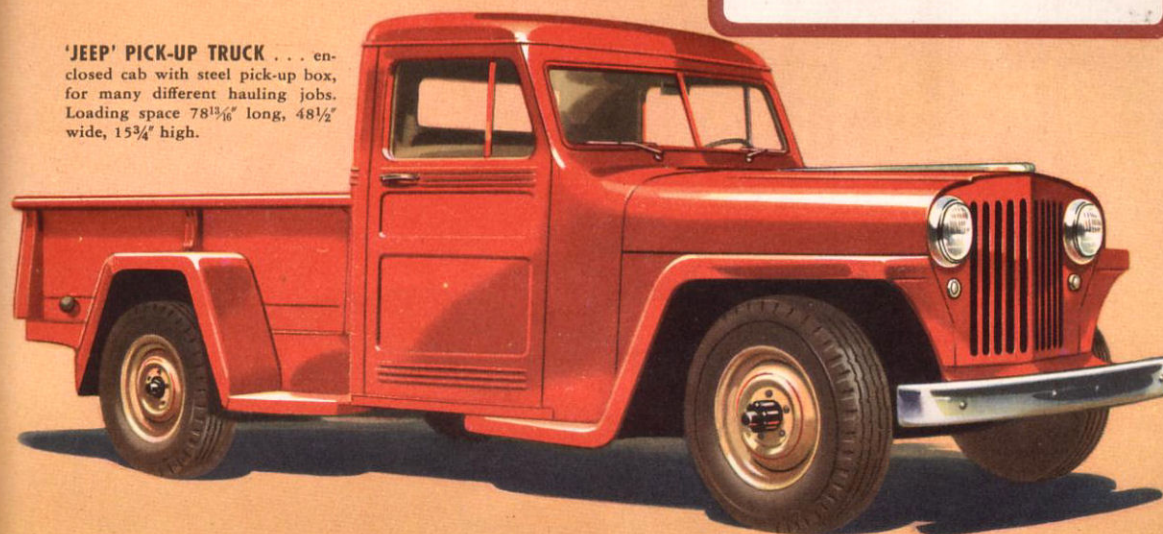
The war-tested Willys-Overland 'Jeep' Engine—world-famous for stamina, dependability and long life—is the power heart of these great new lines of 'Jeep' Trucks. To the truck buyer, that means economy of operation and maintenance and long service from an engine proved by billions of miles of use in every climate in the world.

In every other respect, 'Jeep' Trucks are new, postwar models—truck-designed for efficient hauling, low running costs, ease of maintenance and years of use. Their functional bodies pioneer with new ways to cut dead-weight and add to practical utility.

In addition to standard 2-wheel-drive models, Willys-Overland, world's largest maker of all-wheel-drive vehicles, sets the pace with 4-wheel-drive 'Jeep' Trucks that offer amazing grade-climbing ability and tractive power to go through mud, sand, snow and ice.

'Jeep' Trucks are the big news in the medium-duty field.

'JEEP' PICK-UP TRUCK ... enclosed cab with steel pick-up box, for many different hauling jobs. Loading space 78¹³/₁₆" long, 48¹/₂" wide, 15³/₄" high.

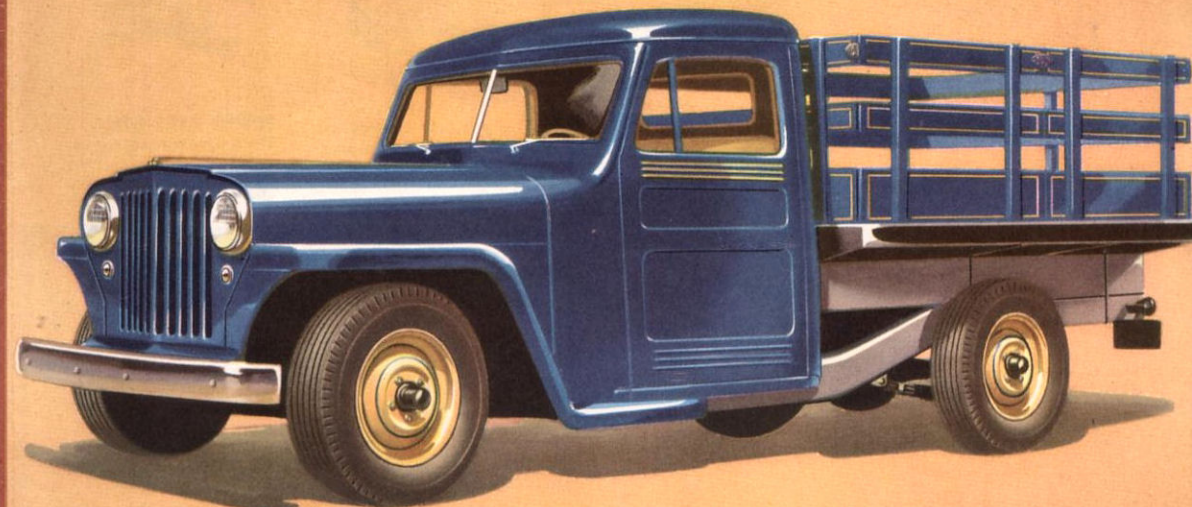


4-WHEEL-DRIVE 'JEEP' TRUCK
5300 Lbs. GVW—Rated Payload 1 Ton

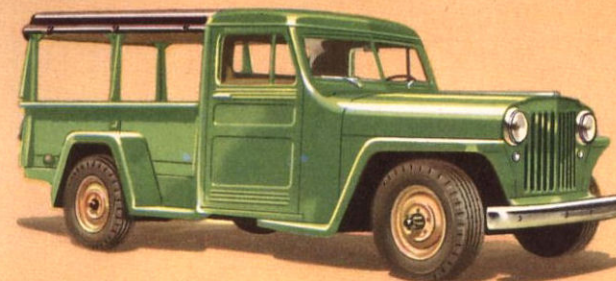
Sensational newcomer in the 1-ton field—selective 2- and 4-wheel drive—6 speeds forward, 2 reverse. This 118"-wheelbase, low-weight truck meets every need of truck users who want the economy of 2-wheel drive on hard roads, plus selective 4-wheel drive for extra tractive power. With all four wheels pulling, this truck will travel roadless open country, claw its way through mud, sand, and snow, climb grades too tough for ordinary tonners. An optional rear power take-off makes it a mobile power unit that operates belt- and shaft-driven equipment. For range of performance, economy, weight and versatility, it stands alone in its class.

2-WHEEL-DRIVE 'JEEP' TRUCK
4700-5300 Lbs. GVW—Rated Payload
¾ Ton to 1 Ton

Its low-cost operation, ease and economy of maintenance, rugged build and dependable performance make this 'Jeep' Truck an outstanding buy. Low weight and the famous 4-cylinder 'Jeep' Engine offer big savings on gasoline, oil and tires. Four body types on 118"-wheelbase, conventional 2-wheel drive.

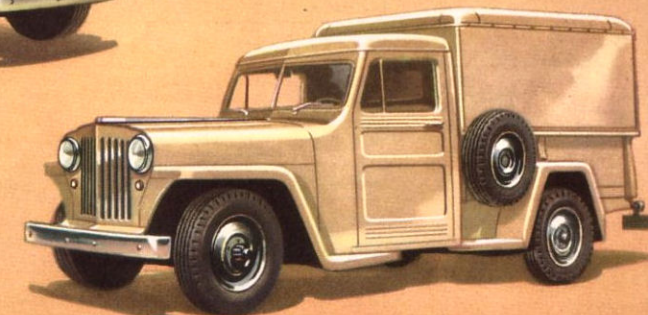


'JEEP' PLATFORM STAKE TRUCK ... available with or without side gates. Hardwood flooring and all-steel skid rails. Over-all platform dimensions 81¹/₂" x 73".



'JEEP' CANOPY TRUCK ... a weatherproof canopy fitted to the pick-up body. Has roll-up curtains on all three sides. Inside loading space 47¹/₄" high, 78¹³/₁₆" long, 40⁷/₈" wide.

'JEEP' VAN TRUCK ... a roomy all-steel weather-type demountable body with locking rear doors for use with pick-up model. Loading space 78¹³/₁₆" long, 57¹/₄" wide, 56⁵/₈" high.



WILLYS-OVERLAND — MAKERS OF THE WORLD'S MOST USEFUL VEHICLES

The Versatile Vehicle for Farm and Industry

THE UNIVERSAL 'Jeep'



PLOWING. The Universal 'Jeep' operates pull-type and hydraulic-lift implements—has power and traction for field work, with low speeds of 2½ to 7 mph.



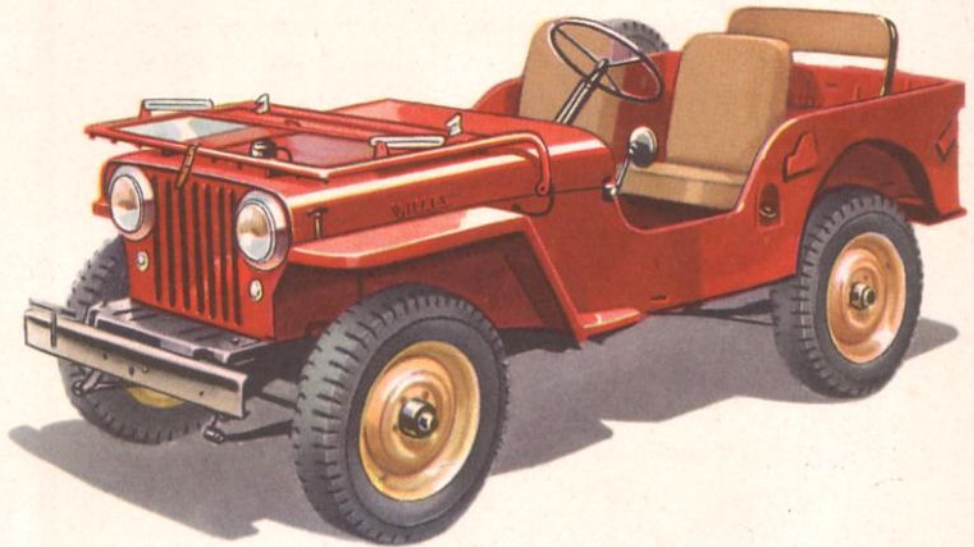
HAULING. The Universal 'Jeep' carries up to 1,200 lbs. It has 2-wheel drive for conventional travel, 4-wheel drive for bad roads or cross-country hauling.



TOWING. The Universal 'Jeep' makes a highly efficient tow truck, capable of towing a braked load of 5,500 lbs. with plenty of reserve for steep grades and heavy going.



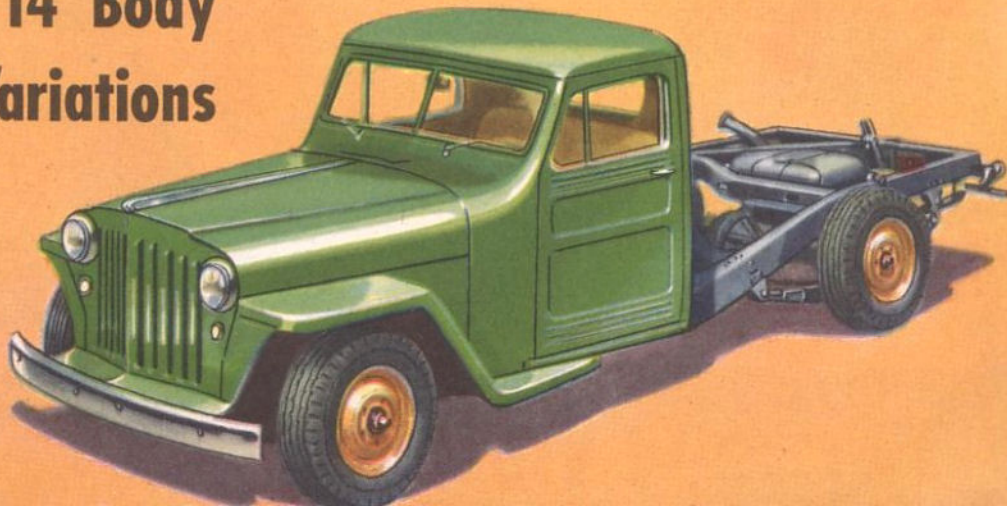
POWER TAKE-OFF. As a mobile power unit, the 'Jeep' takes power wherever it is needed, for the operation of a wide range of belt- and shaft-driven equipment, both industrial and agricultural. Optional.



'Jeep' Trucks

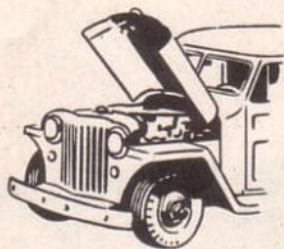
Are Made in 14 Body and Chassis Variations

With a wide range of body styles, available in either 2-wheel-drive or 4-wheel-drive models of 4700 to 5300 lbs. gross vehicle weight, the 'Jeep' Utility Line has a truck for virtually every medium-duty hauling requirement.

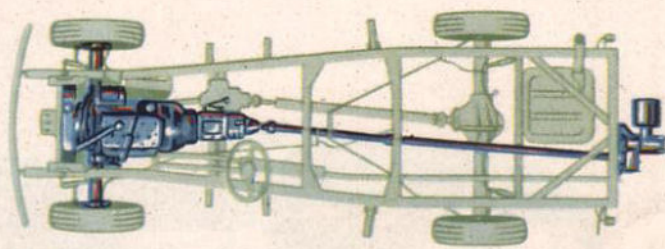


...BUILT FOR SERVICE

WITH 'JEEP' POWER AND STAMINA



ALLIGATOR HOOD...
The broad, wide-opening hood makes the engine easy to get to, simple to service.



CHASSIS of the sensational 4-wheel-drive 'Jeep' Truck, showing two live axles that give tractive effort on all wheels. Note transfer case, back of transmission, which permits selection of 2-wheel drive, or 4-wheel drive with 6 speeds forward, 2 reverse. Optional power take-off is operated by shaft from rear of transfer case.



POWER TAKE-OFF...
With optional rear power-take-off, 4-wheel-drive models operate belt- and shaft-driven equipment.

S P E C I F I C A T I O N S

	'JEEP' PANEL DELIVERY AND 'JEEP' UTILITY WAGON 4,000 lbs. GVW	'JEEP' TRUCK—2-WHEEL DRIVE		'JEEP' TRUCK 4-WHEEL DRIVE 5,300 lbs. GVW	UNIVERSAL 'JEEP' 3,500 lbs. GVW
		4,700 lbs. GVW	5,300 lbs. GVW		
Wheelbase	104"	118"	118"	118"	80"
Gross Vehicle Weight	4,000 lbs.	4,700 lbs.	5,300 lbs.	5,300 lbs.	3,500 lbs.
Frame	3¼" x 2¼" x .060"	5½" x 2" x .179"	5½" x 2" x .179"	5½" x 2" x .179"	4.176" x 1¼" x .088" plus reinforcement
Axle, Front	Planar Type	I Beam Type	I Beam Type	Full Floating, Hypoid Gear 5.38:1 Ratio	Full Floating, Hypoid Gear 5.38:1 Ratio
Axle, Rear	Semi-floating, Hypoid Gear 4.88:1 Ratio	Semi-floating, Spiral Bevel, 5.38:1 Ratio	Semi-floating, Spiral Bevel, 5.38:1 Ratio	Semi-floating, Spiral Bevel, 5.38:1 Ratio	Semi-floating, Hypoid 5.38:1 Ratio
Axle, Rear, Option	5.38:1 Ratio	4.88:1 Ratio 6.17:1 Ratio	4.88:1 Ratio 6.17:1 Ratio
Springs, Front	45½" x 2½"	36¼" x 1¾"	36¼" x 1¾"	36¼" x 1¾"	36¼" x 1¾"
No. of Leaves	7	10	10	9	8
Deflection	150# per inch	225# per inch	225# per inch	303# per inch	195# per inch
Springs, Rear	50" x 1¾"	50" x 2"	50" x 2"	50" x 2"	42" x 1¾"
No. of Leaves	9	11	11	11	9
Deflection	150# per inch	370/410# per inch	370/410# per inch	370/410# per inch	190# per inch
Tires	6.50/15, 4 ply	6.50/16, 6 ply	7.00/16, 6 ply	7.00/16, 6 ply	6.00/16, 4 ply
Engine	Willys-Overland 'Jeep' Engine, 4 cyl.; 134.2 cu. in. displacement; 63 hp. @ 4000 RPM; 106 lbs. ft. of torque @ 2000 RPM				
Cooling System	11 qt. capacity, pressure type (3¼/4¼ psi)	11 qt. capacity, pressure type (3¼/4¼ psi)	11 qt. capacity, pressure type (3¼/4¼ psi)	11 qt. capacity, pressure type (3¼/4¼ psi)	11 qt. capacity, pressure type (3¼/4¼ psi)
Clutch	8.5" dia. 120 lbs. ft. of torque	8.5" dia. 120 lbs. ft. of torque	8.5" dia. 120 lbs. ft. of torque	8.5" dia. 120 lbs. ft. of torque	8.5" dia. 144 lbs. ft. of torque
Transmission	3 speed, synchronous mesh, helical gear	3 speed, synchronous mesh, helical gear	3 speed, synchronous mesh, helical gear	3 speed, synchronous mesh, helical gear	3 speed, synchronous mesh, helical gear
Transfer Case	Provides 6 forward and 2 reverse speed ratios in 4-wheel drive.	
Brakes, Service	10" x 1¾"	11" x 2"	11" x 2"	11" x 2"	9" x 1¾"
Steering Ratio	Variable 14—12—14:1	Variable 15.4—13.5—15.4:1	Variable 15.4—13.5—15.4:1	Variable 15.4—13.5—15.4:1	Variable 14—12—14:1
Fuel Tank	15 Gallon Capacity	15 Gallon Capacity	15 Gallon Capacity	15 Gallon Capacity	10.5 Gallon Capacity

Specifications and prices subject to change without notice.

7-1-48—Printed in U. S. A.

WILLYS-OVERLAND MOTORS · TOLEDO, OHIO