



no boundaries



03 ESCAPE



ESCAPE

We've all heard the saying, "Live life to the fullest." Well, between work, play, errands, whatever, it looks like you're doing just that. But is it rich? You bet, as long as you find a vehicle that can keep pace with all the craziness. For you, that vehicle is Escape, the sporty "ute" that can change gears as quickly as you do. Yes, a lot of stuff happens in your life in that time between pulling out of the garage and rolling back in. Escape is ready for every change of plan. It will easily take you from the office, to soccer, and into a good campsite before nightfall. With its stylish appeal and bold spirit of adventure, Escape is the perfect contribution to a life less ordinary — like yours. Apparently other people feel that way, too. Why else would Escape be America's best-selling small sport utility vehicle?

- 2 Limited
- 4 XLT Appearance Package
- 6 XLT Sport
- 8 XLT Premium
- 10 Comfort
- 12 Features
- 14 Safety
- 15 Control
- 16 Specifications
- 18 Colors/Wheels
- 20 Dealer Accessories



NEW ESCAPE LIMITED



1

Because you never know where your travels may take you, it's best to be behind the wheel of the new Escape Limited. Cruise with standard comforts uncommon to most SUVs in the class – things like rich, premium leather seating surfaces, side-impact airbags,* an auto-dimming rearview mirror, automatic headlamps, sunvisors with illuminated mirrors, and the MACH® 6-disc in-dash CD player with automatic volume control.

Whether you're pulling up to a midtown club or dashing to the dry cleaners, you'll be proud of Escape Limited's sleek, monochromatic appearance and unique 16" bright machined-aluminum wheels.

1 Snow, ice... any of the elements that want to mess with Escape Limited's visibility are thwarted with the handy **power, heated outside mirrors**.



2

2 One of the unexpected standards in the new Escape Limited is the **reverse sensing system**. It alerts the driver, through a series of beeps, to the presence of certain objects behind the vehicle.

3 Limited is all about cozy conveniences. And what could be cozier than **heated driver and front passenger seats**? Standard on Escape Limited.

*Always wear your safety belt and secure children in the rear seat.



3



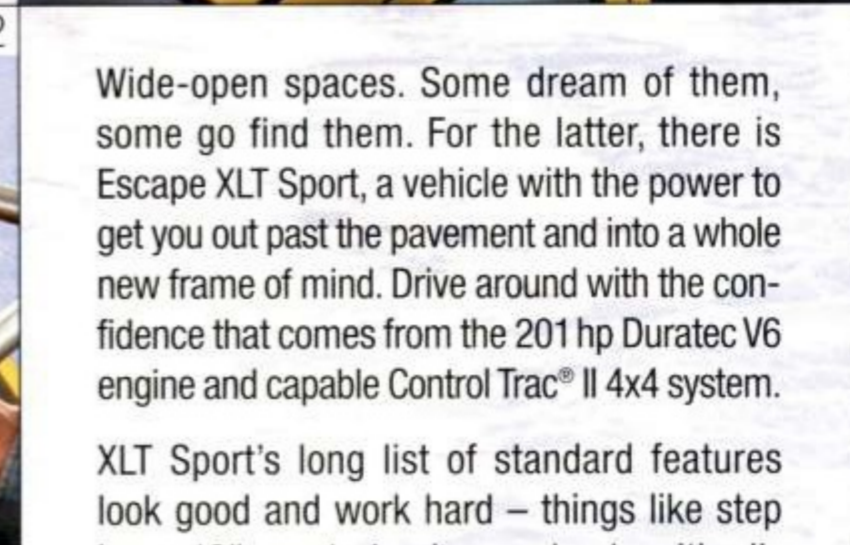
4

NEW ESCAPE XLT APPEARANCE PACKAGE

With all it's got going on, it's hard to imagine how you could improve upon XLT Premium. Here's a thought: add the available new XLT Appearance Package and Escape's head-turning good looks are elevated to a whole new level. It starts with hot-looking, painted Dark Shadow Grey lower bodyside cladding, bumpers, wheel-lip moldings and side step bars. It wraps up with unique 16" wheels that really set this XLT apart. With this bold new look, Escape XLT Premium with the Appearance Package is all attitude.



ESCAPE XLT SPORT



Wide-open spaces. Some dream of them, some go find them. For the latter, there is Escape XLT Sport, a vehicle with the power to get you out past the pavement and into a whole new frame of mind. Drive around with the confidence that comes from the 201 hp Duratec V6 engine and capable Control Trac® II 4x4 system.

XLT Sport's long list of standard features look good and work hard – things like step bars, 16" sport aluminum wheels with all-terrain treads that really grab the road, the innovative No Boundaries™ Rack System, color-keyed front and rear floor mats, and even a Class II trailer towing package.

- 1 With Escape XLT Sport, you'll always have the freedom of choice to take off, without leaving anything behind. The ingenious **No Boundaries™ Rack System** gives you all the capability you could want. On top of the roof, the rack has adjustable cross-bars that support up to 100 lbs. of gear.
- 2 Need more space? Simply unlock the rack, pull it down, and the rack snaps into position over the liftgate to accommodate yet **another 100 lbs. of gear**. And check this out: you can carry gear on both racks at the same time. So load up.



ESCAPE XLT PREMIUM

For you, life isn't about compromise. You know what you want. In your vehicle, that means all the stuff that makes driving fun. To satisfy your must-have list, you need Escape XLT Premium. It's a sporty SUV that handles and feels great behind the wheel, thanks to Escape's fully independent front and rear suspension and peppy V6 engine. And yes, it has all the extras – the things you can't live without. And most are standard. Open the standard power moonroof and watch how the light plays off the supple leather seating surfaces (also standard). Feel the leather-wrapped steering wheel with handy steering wheel-mounted speed control buttons. And when you want to load cargo, just fold down either side of the rear 60/40 split-bench seat, then cover up your treasures with the retractable cargo area cover. See? Nothing is left out. And why would it be? This is your vehicle. Just the way you want it.



INNER COMFORT

What is an SUV?

Sport? That means fun, we understand that. Utility? Got it, very functional. Vehicle? Well, that's obvious. So where does comfort fit in? Apparently, it's all inside Escape. Low-back bucket seats with adjustable head restraints let front passengers settle right in. Rear passengers can stretch out with a fold-flat bench seat that's even split 60/40 in XLT and Limited models. Standards include air conditioning with rear floor heat ducts, power windows, power door locks with remote keyless entry, and privacy glass (XLS Sport, XLT and Limited). Choose the Leather Comfort Group and you'll get leather seating surfaces, a leather-wrapped steering wheel, and an overhead console with dual storage bins. Now *that's* comfy.



INTERIOR FEATURES

- 1 Starlight or sunshine, you'll never have to miss it with this available **power moonroof**. Either tilt it open, retract it completely, or take advantage of the interior shade and tinted glass. You're in control.
- 2 Enjoy the stellar sound of the **MACH® MP3 Music System**. It spins conventional CDs, MP3s and mixed-mode discs. You can play up to 253 songs with about 10 hours of play on one disc. Standard on Escape XLS Sport.
- 3 You'll have no trouble finding your comfort zone with the **power driver's seat** on XLT and Limited models. It provides six directions of motion, plus a manually adjustable lumbar support.
- 4 One of the many fabulous standard features of Escape Limited is this **6-disc in-dash MACH® Audio System** with automatic volume control. It kicks out amazing sound from seven well-placed speakers.
- 5 Escape also includes the **LATCH system** with 3 top tether anchors mounted in the roof and lower anchors in the seats to securely fasten child safety seats in the rear outboard positions.
- 6 Not only will you and your passengers enjoy a comfortable, roomy interior, you'll also have lots of space for gear in back. With the rear seats up, there is 33.1 cu. ft. of cargo space. Fold them down, and a **generous 64.8 cu. ft.** is available.
- 7 You'll feel more secure knowing your gear is concealed under this **retractable, heavy-duty vinyl cargo cover**. Offered as an option on XLS and standard on XLT and Limited, it matches your interior and helps maintain a clean look in back.
- 8 With two choices, it's easy to stow your cargo in back. Slip small stuff in through the **liftglass**, or open the liftgate for larger items.



1



2



3



6

4



5



7



8



SAFETY & SECURITY

Escape's long list of features practically guarantees a good time. But you also want to feel safe and secure. With **19 out of 20 stars for crash performance**, Escape was engineered to do just that. The National Highway Traffic Safety Administration (NHTSA) gave Escape double 5-Star ratings in side-impact testing (1st and 2nd rows), a 5-Star rating for driver-side frontal crash testing, and a 4-Star rating for the front passenger side.

In addition, Escape includes a number of standard and available features to help keep you feeling safe and secure, like a standard remote keyless entry system and the SecuriLock™ anti-theft system. After all, when it comes to peace of mind, more is definitely better.

1 Integrated into the luxurious leather-trimmed front bucket seats in Escape Limited are standard **side-impact airbags*** that offer protection in the event of certain side impacts. They're available on all models.

2 Escape is built with sturdy unibody construction and **crumple zones** that are designed to dissipate energy away from the passenger compartment.

3 **Side intrusion door beams** help reduce passenger compartment intrusion in certain side impacts. The solid steel supports provide structural stability and energy absorption.

4 Meticulous attention has gone into designing Escape's braking system. Escape XLT and Limited models are equipped with a standard **4-wheel anti-lock braking system (ABS)** that provides controlled stopping power as well as steering control. Also available on XLS models.

*Always wear your safety belt and secure children in the rear seat.



1



4

3

2

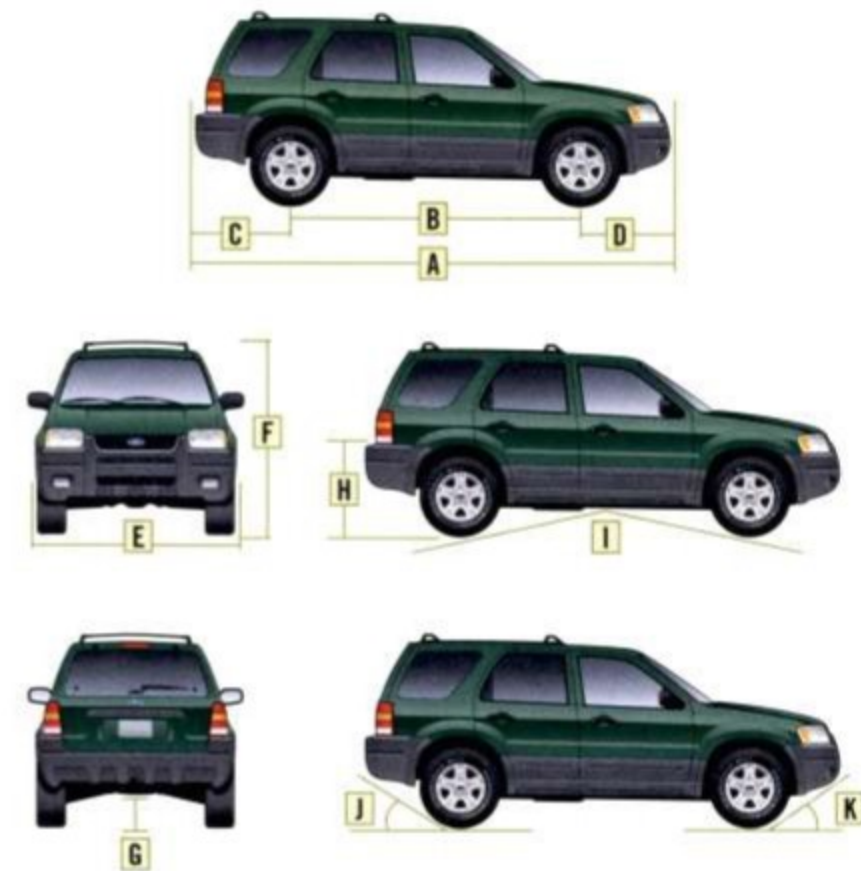


CONTROL

Sure, you've got to get from point A to point B, but you want to have some fun along the way. And you want to be both comfortable *and* in control. Escape's **fully independent rear suspension** has that covered. This smart design allows each rear wheel to respond to dips and bumps independently. That means a smooth ride and precise handling.

For improved traction, opt for Escape 4x4. The **Control Trac® II 4-wheel-drive system** provides two driver-selectable modes. Operate in "4x4 AUTO" for most driving conditions. In this mode, the vehicle operates in front-wheel drive and automatically proportions more torque to the rear axle when slippage occurs. There's also the "4x4 ON" mode that locks the front and rear axles together for enhanced traction in more extreme situations.





Exterior	4x2/4x4
A. Overall length	173.0"
B. Wheelbase	103.1"
C. Overhang - rear	36.4"
D. Overhang - front	33.4"
E. Overall width	70.1"
F. Height	69.1"
G. Ground clearance (min.)	7.8"
H. Loadfloor height	29.3"
I. Ramp breakover angle	20.0°
J. Angle of departure	22.0°
K. Angle of approach	28.5°

Interior	
1st row	
Head room	40.4"
Shoulder room	56.3"
Hip room	53.4"
Leg room	41.6"
Leg room (max.)	42.7"
2nd row	
Head room	39.2"
Shoulder room	55.9"
Hip room	49.0"
Leg room	36.4"
Cargo (cu. ft.)	
Maximum cargo volume (2nd-row cushion removed)	69.2
Cargo volume (2nd row folded)	64.8
Behind 2nd row	33.1

STANDARD FEATURES

Mechanical

- 4-wheel independent suspension
- 100,000-mile tune-up interval*
- Axle ratio - 2.93:1
- Battery saver
- Control Trac® II full-time 4-wheel-drive system (4x4 models only)
- Front-wheel drive (4x2 models only)
- Fuel tank - 16-gallon capacity
- Power rack-and-pinion steering
- Stabilizer bar - Front
- Unibody construction

Safety/Security

- Airbags - Driver and front passenger 2nd Generation
- Auto headlamps-off delay
- Belt-Minder™ safety belt reminder
- Brake/shift interlock with automatic transmission
- Fuel pump inertia shutoff switch
- Headlamps-on alert chime
- Height adjustable safety belts - Front
- Key-in-ignition alert chime
- LATCH system upper tether anchors and lower anchors for child safety seats - Rear outboard positions
- Remote keyless entry system with 2 key fobs
- Safety belt energy management retractors - Front
- Safety belt pretensioners - Front
- SecuriLock™ - Passive anti-theft system
- Side intrusion door beams

Seating

- Front bucket seats
- Rear bench seat with tip-fold-flat latch
- Removable rear seat cushion

Interior

- Accessory delay for power windows
- Air conditioning
- Assist handles - 4 front, 2 rear
- Cargo area floor hooks (4)
- Coat hook - 1 in 2nd row
- Floor console - Storage bin and 5 cupholders (4 in XLT and Limited)
- Glove compartment with lock
- Head restraints - Adjustable (4)
- Illuminated entry system
- Power door locks with rear door child safety locks
- Power points - 2 front
- Power windows - With one-touch-down driver's side feature
- Rear floor heat ducts
- Tachometer
- Tilt steering wheel
- Visor vanity mirrors - Dual covered

Exterior

- Bodyside cladding and bumpers - Grey molded-in color on XLS/XLT models, painted body color on Limited (monochromatic)
- Headlamps - Aerodynamic halogen
- Liftgate with flip-up glass
- Power outside mirrors with manual fold feature
- Rear defroster
- Roof rack
- Solar tinted glass (door glass and liftgate)
- Windshield wipers - Front: variable-intermittent with washer; rear: 2-speed intermittent with washer

*Under normal driving conditions with regular fluid and filter changes.

Comparisons based on 2002 competitive models, publicly available information and Ford certification data at time of printing. Some features discussed may be optional. Vehicles shown may contain optional equipment. Features shown may be offered only in combination with other options or subject to additional ordering requirements or limitations. Following publication of the catalog, certain changes in standard equipment, options and the like, or product delays, may have occurred which would not be included in these pages. Your Ford Dealer is the best source for up-to-date information. Ford Division reserves the right to change product specifications at any time without incurring obligations.

MODEL-SPECIFIC FEATURES/OPTIONS

	XLS Value 4x2	XLS Sport 4x2	XLS Popular 4x2 or 4x4
Mechanical			
2.0L DOHC Zetec I4 engine	■	■	—
3.0L DOHC Duratec V6 engine	—	■	■
5-speed manual transmission	■	■	—
4-speed automatic transmission	—	■	■
15" styled steel wheels	■	—	■
15" sparkle silver cast aluminum wheels	—	■	—
15" aluminum wheels	□	—	□
P225/70R15 all-season BSW tires	■	—	■
P225/70R15 all-season OWL tires	□	■	□
Safety/Security			
4-wheel anti-lock braking system (ABS)	□	□	□
Side-impact airbags - Driver and front passenger	□	□	□
Seating			
Cloth trim	■	■	■
Interior			
AM/FM stereo with single CD/cassette, clock and 4 speakers	■	—	■
AM/FM stereo with MACH® MP3 Music System	—	■	—
Convenience Group			
- Speed control	□	□	□
- Retractable cargo cover	□	□	□
- Perimeter alarm	□	□	□
- Front and rear floor mats	□	□	□
Floor mats - Color-keyed front and rear*	□	■	□
Exterior			
Accent bars - Sparkle silver	—	■	—
Grille - Black surround with mesh center	■	■	■
Privacy glass (rear quarter and rear window)	—	■	—
Side step bars**	□	—	□
Trailer tow - Includes Class II 3500-lb. receiver, 4-pin trailer wiring harness and engine oil cooler (3.0L 4x2)†	—	—	□

■ Standard □ Optional — Not Available
 *Optional only as part of Convenience Group on XLS Value 4x2 and XLS Popular 4x2 or 4x4.
 **Requires 15" aluminum wheels/tires. †Engine oil cooler standard with 2.0L and 3.0L 4x4.

	XLT Popular 4x2	XLT Sport 4x4	XLT Popular 2 4x2 or 4x4	XLT Premium 4x2 or 4x4
Mechanical				
3.0L DOHC Duratec V6 engine	■	■	■	■
4-speed automatic transmission	■	■	■	■
15" aluminum wheels	■	■	■	■
16" sport aluminum wheels	—	■	—	—
16" aluminum wheels	—	■	—	—
16" bright machined-aluminum wheels	—	—	■	—
P225/70R15 all-season OWL tires	■	—	—	—
P235/70R16 all-season OWL tires	—	—	■	—
P235/70R16 all-terrain OWL tires	—	—	—	■
Safety/Security				
4-wheel anti-lock braking system (ABS)	■	■	■	■
Side-impact airbags - Driver and front passenger	□	□	□	□
Seating				
Cloth trim - Premium grade	■	■	■	■
6-way power driver's seat and manual driver lumbar	■	■	■	■
Heated front seats	—	—	■	—
Rear 60/40 split-bench with tip-fold-flat latch	■	■	■	■
Interior				
AM/FM stereo with single CD/cassette, clock and 4 speakers	□	□	□	□
AM/FM stereo with 6-disc in-dash CD player and 4 speakers	■	■	■	■
AM/FM MACH® audio system with 6-disc in-dash CD player and 7 speakers, plus automatic volume control (Limited only)	□	□	□	□
Auto-dimming rearview mirror with automatic headlamps	—	—	■	—
Convenience Group				
- Speed control	□	□	□	□
- Retractable cargo cover	□	□	□	□
- Perimeter alarm	□	□	□	□
- Front and rear floor mats	□	□	□	□
Floor console - With storage bin, armrest and 4 cupholders	■	■	■	■
Instrument panel with painted center finish and front-door switch bezels	■	■	■	■
Leather Comfort Group				
- Leather seating surfaces	—	—	■	—
- Black leather-wrapped steering wheel	—	—	■	—
- Overhead console with dual storage bins	—	—	■	—
Power point - Cargo area (in addition to front)	■	■	■	■
Visor vanity mirrors - Illuminated	—	—	■	—
Exterior				
Fog lamps	■	■	■	■
Grille - Chrome surround	—	■	—	—
No Boundaries™ Rack System	—	—	■	—
Power, heated outside mirrors with manual fold feature	—	—	■	—
Power moonroof with sunshade	□	—	□	—
Privacy glass (rear quarter and rear window)	■	■	■	■
Reverse sensing system	—	—	■	—
Side step bars	□	—	□	—
Trailer tow - Includes Class II 3500-lb. receiver, 4-pin trailer wiring harness and engine oil cooler (4x2)†	□	■	□	□
XLT Appearance Package				
- Painted Dark Shadow Grey bodyside cladding, bumpers and wheel-lip moldings	—	—	■	—
- Side step bars - Painted Dark Shadow Grey	—	—	■	—
- 16" bright machined-aluminum wheels	—	—	■	—
Wheel-lip moldings‡§ - Grey molded-in color on XLT Sport, painted body color on Limited (monochromatic)	—	■	—	□

†Engine oil cooler standard on 4x4. ‡Optional only as part of the XLT Appearance Package on XLT Premium.



2.0L DOHC Zetec I4 Engine



3.0L DOHC Duratec V6 Engine

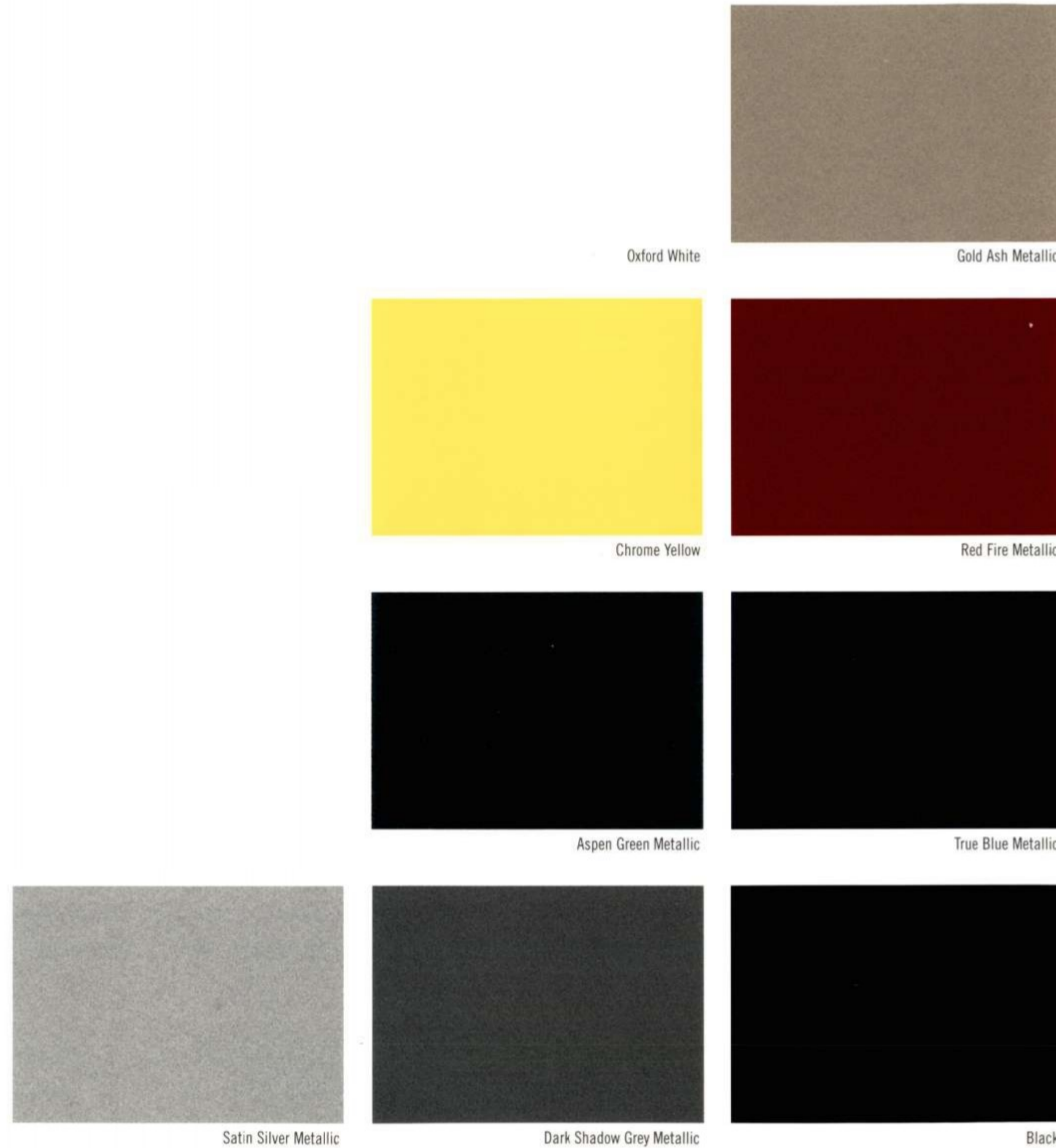
	2.0L I4	3.0L V6
Horsepower (hp @ rpm)	127 @ 5400	201 @ 5900
Torque (lb.-ft. @ rpm)	135 @ 4500	196 @ 4700
Axle ratio	2.93:1	2.93:1
Towing capacity* (lbs.)	1000	2000
		3500**

*Maximum capacity shown is for properly equipped vehicles with required equipment and a 150-lb. driver. Weight of additional options, equipment, passengers and cargo must be deducted from this weight. For additional information, see your Ford Dealer.
 **With Class II trailer towing.

INTERIOR/EXTERIOR COMBINATIONS

	Medium/Dark Pebble
	Medium/Dark Flint
	Ebony Black
XLS/XLS Sport/XLT	
■ ■	Oxford White
■ ■	Gold Ash Metallic*
■ ■	Chrome Yellow
■ ■	Red Fire Metallic*
■ ■	Aspen Green Metallic*
■ ■	True Blue Metallic
■ ■	Satin Silver Metallic
■ ■	Dark Shadow Grey Metallic
■ ■	Black
XLT Sport	
■ ■	Chrome Yellow
■ ■	Red Fire Metallic*
■ ■	Dark Shadow Grey Metallic
■ ■	Black
XLT Appearance Package	
■ ■	Oxford White
■ ■	Red Fire Metallic*
■ ■	Aspen Green Metallic*
■ ■	True Blue Metallic
■ ■	Satin Silver Metallic
■ ■	Black
Limited	
■ ■	Gold Ash Metallic*
■ ■	True Blue Metallic
■ ■	Satin Silver Metallic
■ ■	Dark Shadow Grey Metallic
■ ■	Black

*New for 2003.



Ford uses clearcoat paint for beauty and protection. Colors shown are representative only. See your dealer for actual paint/trim options.



15" Styled Steel Wheel
Standard on XLS Value and XLS Popular



15" Sparkle Silver Cast Aluminum Wheel
Standard on XLS Sport



15" Aluminum Wheel
Standard on XLT Popular



16" Aluminum Wheel
Standard on XLT Popular 2 and Premium



16" Sport Aluminum Wheel
Standard on XLT Sport



16" Bright Machined-Aluminum Wheel
Standard on Limited and XLT with Appearance Package



- 1 Add a little extra polish and shine to your Escape with these **chrome taillight surrounds**.
- 2 The **remote start** allows you to start your vehicle and get it toasty warm or refreshingly cool from up to 500 feet away. For added security, it can also turn on the interior lights, flash the headlamps and sound the horn in an emergency.
- 3 With so much room for storage, you'll want to maintain a little organization. This heavy-duty **cargo organizer** sorts and stabilizes your gear.
- 4 Attach the **Quarter-Roc® Bike Carrier** to Escape's standard hitch mount and you can load up one or two bikes and head out to the trail. The Roc conveniently swings down to allow access to the cargo area.
- 5 Keep them entertained for hours with the **Rear-Seat DVD Entertainment System**.
- 6 Add some slick to your Escape's style with **distinctive 16" chrome wheels**.
- 7 You'll enjoy safari-style travel when you load up your gear in the **Yakima® LoadWarrior** system. Its multiple components allow you to secure anything from luggage, to bikes, to kayaks, onto the standard roof rack or XLT Sport No Boundaries™ rack.

2

5

6

3

4

7

See your dealer for these and other great Ford Dealer-installed accessories.



www.fordvehicles.com

Get information on any Ford vehicle, print e-brochures or take a look at financing and leasing options. Ford owners can enjoy the benefits of **My Ford**, a private, owners-only area of fordvehicles.com, designed to provide a single, convenient area to manage vehicle information, including maintenance, financing and web services. Our website also offers details about European Delivery, the Pre-Owned Ford program, Ford Credit and more. There's a world of information, but only one address to remember, fordvehicles.com.

Environmentally Responsible

"**Tread Lightly!**" is an educational program designed to increase the awareness of land-use regulations and responsibilities in our wilderness areas. Ford joins the U.S. Forest Service and the Bureau of Land Management in encouraging you to preserve our national forests and other public and private lands by "treading lightly."



Proud Partners of America's National Parks

Ford Motor Company is a **Proud Partner of America's National Parks**. Ford is working closely with the National Park Foundation and the National Park Service to help develop innovative transportation and environmental solutions that enable visitors to enjoy National Parks without compromising their beauty.



Ford Credit and Red Carpet Lease

Many lease managers have completed several hours of training in a Red Carpet Lease program designed to make us the best in the business. We think you'll find a Red Carpet Lease the best way to lease.

Under the New Vehicle Limited Warranty, you'll receive Bumper-to-Bumper, no-deductible coverage on your new Ford vehicle for 3 years/36,000 miles. You'll also receive unlimited-mileage, no-deductible corrosion perforation coverage for five years. Ask your Ford Dealer for a copy of this warranty.

During its 3-year/36,000-mile limited warranty period, every new Ford vehicle includes the assurance and support of a 24-hour emergency Roadside Assistance program. Roadside Assistance includes such services as fuel delivery, tire changes, jump starts, and help when you are locked out of your vehicle. Ask your Ford Dealer for complete details about this program.

Complete information on our vehicle lineup is available on our website. To get more information, please visit us at **www.fordvehicles.com**. Likewise, to get details on various financing options available on your new Ford vehicle, please visit **www.fordcredit.com**. Doing so can give you a head start before talking to your Ford Dealer about financing your new Ford vehicle.



no boundaries

fordvehicles.com

FORD. NO BOUNDARIES. WHEN YOU LIVE WITH SPIRIT AND PASSION, THE POSSIBILITIES OF LIFE AND ACHIEVEMENT ARE LIMITLESS. THERE ARE NO BOUNDARIES. EVERY PRODUCT FORD MOTOR COMPANY DESIGNS AND BUILDS IS THE DIRECT RESULT OF 100 YEARS OF THAT SPIRIT AND PASSION. IT WAS PRESENT WHEN HENRY FORD FOUNDED THE COMPANY IN 1903 AND WHEN THE FIRST AUTOMOBILE ROLLED FROM HIS WORKSHOP. TODAY, IT IS MORE ALIVE THAN EVER. THERE ARE NO BOUNDARIES TO OUR ENDLESS DRIVE TO TURN A NO INTO A RESOUNDING YES. TO GO BEYOND WHAT WE THOUGHT WAS POSSIBLE. TO CREATE AN ARRAY OF VEHICLES THAT HELP PROVIDE A PLACE WHERE FAMILY AND FRIENDS CAN CONNECT WITH EACH OTHER AS WELL AS WITH THEIR COMMUNITY. AND THERE ARE NO BOUNDARIES TO OUR DEDICATION – STRIVING TO BRING YOU THE HIGHEST QUALITY, MOST EXCITING, BEST ENGINEERED, MOST RELIABLE PRODUCTS IN THE WORLD.



Ford Motor Company
100 YEARS