

C-Class

Sport Sedans

Mercedes-Benz 2006



> C 230 > C 350 > C 55 AMG



Mercedes-Benz

C 230 Sport Sedan **EXTERIOR**

Positively charged elements

17" 5-spoke aluminum-alloy wheels
Lowered, sport-tuned suspension
Perforated front brake discs with
dual-piston calipers

Nano-particle clearcoat paint technology
AMG-design lower bodywork
Polished stainless-steel exhaust tip
Optional Bi-Xenon projector headlamps

Center of attention **Emma** ▾



C 230 Sport Sedan shown in optional Granite Grey metallic with optional Sunroof Package.



What you wear on the outside is an expression of how you feel inside. The aggressive attitude of the 2006 C 230 Sport Sedan's powerful new-generation 2.5-liter DOHC V-6 is reflected by 360 degrees of intense exterior style, from its brilliant clear-lens headlamps to its wraparound chrome trim to its eye-catching taillamps and polished stainless-steel exhaust tip. It's an assertive look that demands attention with dramatically contoured lower bodywork, including a deep front apron with wire mesh air intakes, and staggered-width 17" 5-spoke aluminum-alloy wheels. LED turn signals in the side mirror housings even bring attention to the driver's intentions. Only one question: Are they checking out Emma or her C 230?

C 230 Sport Sedan INTERIOR

Star treatment

10-way adjustable front seats with power height/recline
Sport front seats with leather inserts
6-speaker audio with MP3-capable in-dash CD
Dual-zone climate control
Silver linear-pattern aluminum trim

4-way adjustable steering column
3-spoke multifunction sport steering wheel
Optional harman/kardon® LOGIC7® digital surround sound with 6-CD changer
Optional 60/40-split folding rear seats



C 230 Sport Sedan shown in Black.

<< Fresh from her world tour Emma



C 230 Sport Sedan shown in Black with optional automatic transmission and Sunroof Package.

Emma has been banned from three different karaoke bars.

04

The power windows are up. The C 230 Sport Sedan's powerful sound system—featuring six speakers and a standard CD player—is turned way up. And Emma is taking part in a duet no one else was ever meant to hear. Not everyone is blessed with a great singing voice, but the C 230 treats her like a diva anyway. The luxurious interior offers supportive 10-way adjustable sport front seats with leather inserts and power-adjustable height and recline. The leather-wrapped multifunction sport steering wheel lets Emma change CD tracks, adjust the audio volume, or with the accessory iPod® integration kit, even control her Apple® iPod! Silver linear-pattern aluminum trims the console and doors, while hooded chrome rings encircle the gauges. And when Emma's got a passenger who wants a share of the spotlight, there's even dual-zone climate control to keep the two divas in at least some form of harmony.

1 Accessory iPod integration kit requires dock-equipped iPod, sold separately. See dealer for details. Apple and iPod are registered trademarks of Apple Computer, Inc.

You don't have to be geek-chic to enjoy the clever SmartKey. It not only operates the remote door locks and sets the alarm, it can even open or close all the windows from outside the car. It also starts the car—with a nearly clone-proof electronic code. The sleek, compact, all-in-one design actually fits in your pocket without ruining the lines of your favorite jeans. For in-the-car convenience, all four power windows feature one-touch express-up and express-down control.



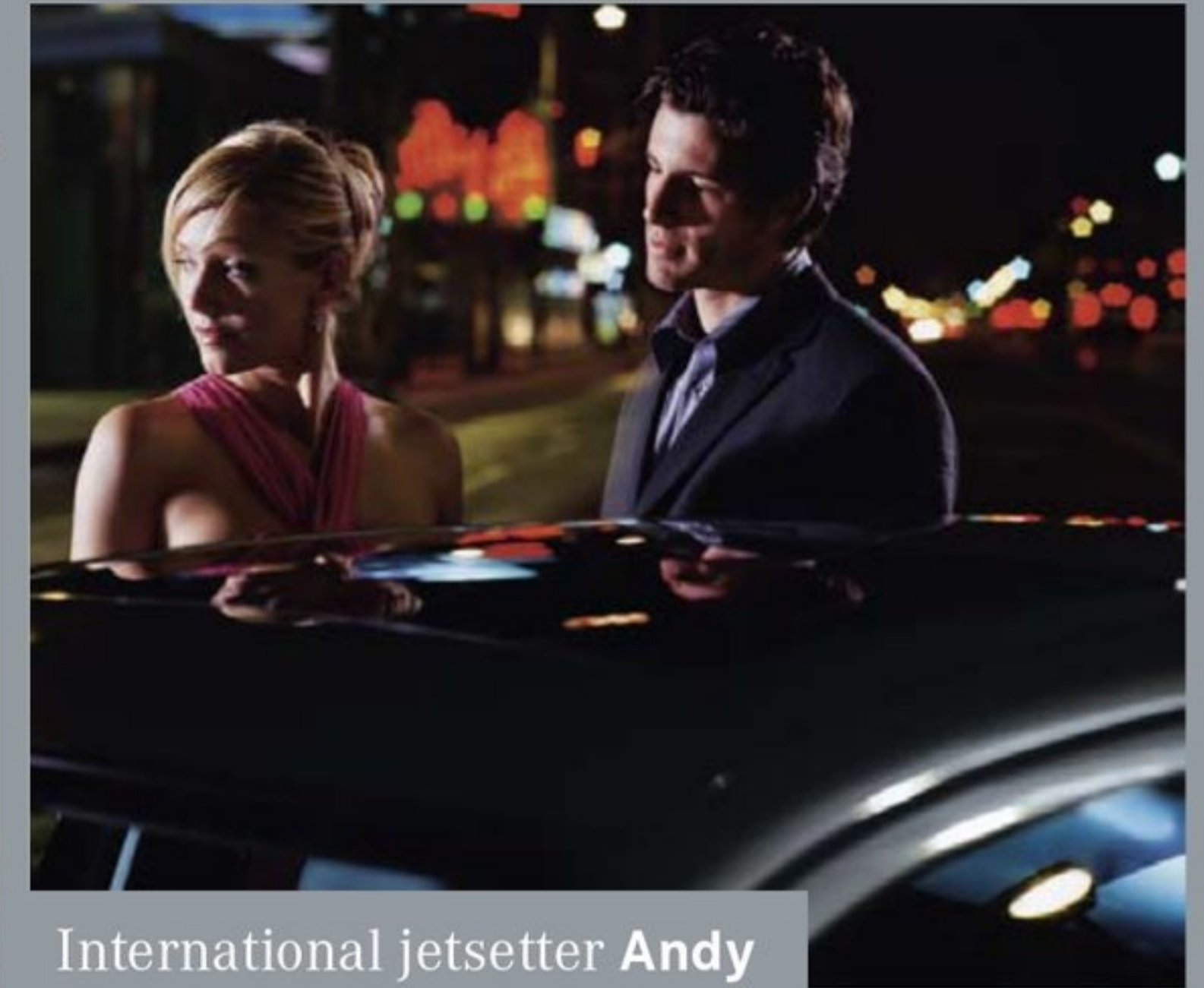
C 350 Sport Sedan EXTERIOR

Cleared for takeoff

17" 5-spoke aluminum-alloy wheels
Perforated front brake discs with dual-piston calipers
Lowered sport-tuned suspension
Nano-particle clearcoat paint technology

AMG-design lower bodywork
Polished stainless-steel exhaust tip
Optional Bi-Xenon projector headlamps

>>



International jetsetter **Andy**

C 350 Sport Sedan shown in optional Pewter metallic with optional Sunroof and Lighting Packages.



Andy knows how to say "Haven't we met somewhere before?" in seven languages.

06

All work and no play can make anyone dull. Fortunately for Andy, he's got the new C 350 Sport Sedan to help him stay sharp. The C 350 Sport Sedan features AMG-design lower body styling—including a muscular front apron with mesh inserts and aggressively contoured side sills—and staggered-width 17" 5-spoke aluminum-alloy wheels rolling on a lowered sport suspension with a wide wheel stance. If you're going to live life in the fast lane—268-hp 3.5-liter DOHC V-6 fast—you've got to look the part. So we've given the C 350 Sport Sedan extra touches such as clear-lens headlamps, cool blue-tinted glass and a stainless-steel exhaust tip. Even its paint is innovative, using nano-particle technology to help its clearcoat fend off minor damage—like swirl marks from the car wash, or that bird who stalks clean cars—and keep its deep gloss far from dull. Even if you aren't quite a jetsetter on the international level, at least you can be one on the interstate.



Treasure hunter Andy



C 350 Sport Sedan INTERIOR

Most valuable players

10-way power front seats with 3-position memory
Sport front seats with leather inserts
3-spoke multifunction sport steering wheel
4-way power steering column

Dual-zone climate control
Optional harman/kardon® LOGIC7® digital surround sound with 6-CD changer
Optional 60/40-split folding rear seats

C350 Sport Sedan shown in Black with optional heated front seats and Sunroof Package.



Andy knows a good deal when he sees one. And, as you can see, he has impeccable taste. So it's no surprise that he would choose to drive the C 350 Sport Sedan. The interior is loaded with stylish standard features like leather front seating inserts and a multifunction sport steering wheel that Andy can use to keep current with information provided in the instrument cluster's multifunction display. The look is fresh as well, with silver linear-pattern aluminum trim on the console and doors, hooded chrome-ringed gauges, and rubber-studded stainless-steel pedals. And, like every C-Class, the C 350 Sport Sedan offers the 8-way protection of six standard air bags. Unfortunately for Andy, they won't do him much good when his girlfriend finds out what he got her for her birthday.



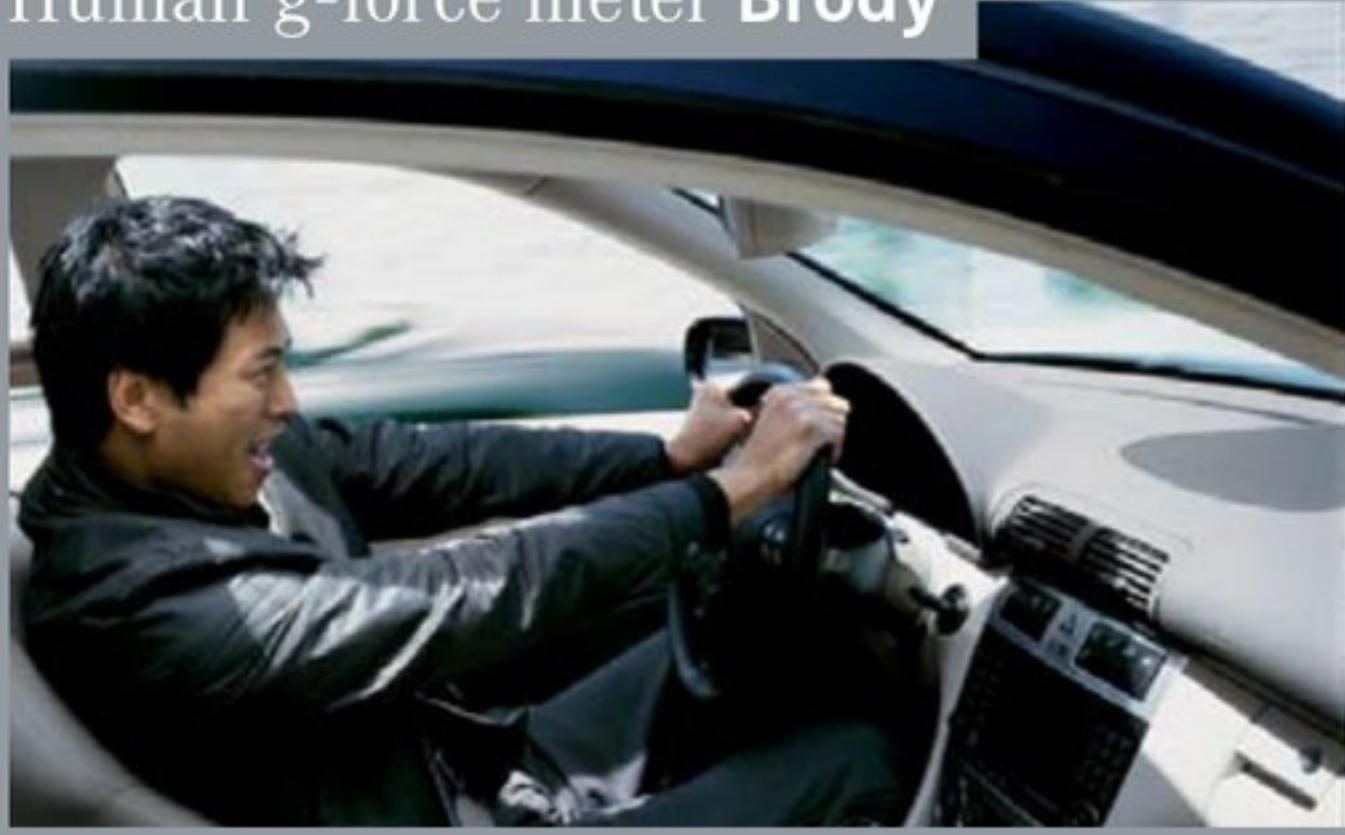
C 350 Sport Sedan shown in Ash with optional COMAND system, heated front seats, and Sunroof and Lighting Packages.



Some people just have an innate ability to make those around them feel energized. In Andy's case, it has less to do with ability and much more to do with his C 350 Sport Sedan. Inside, there's plenty of room for everyone to kick back. Up front, deeply bolstered 10-way power sport front seats help hold front passengers in place while Andy is zipping through one of his patented shortcuts. Throughout the interior, there's the soothing effect of dual-zone climate control featuring an electrostatic dust filter to help keep the air inside clean. But if one of the carpoolers should get a bit too relaxed, Andy gives them a jolt with some '80s flashback action from the optional 320-watt 12-speaker harman/kardon[®] LOGIC7[®] 7.1-channel digital surround sound system.¹ After all, as the driver, it's his duty to get everyone in his carpool to work, alert and on time. All-star, indeed.

¹ Surround sound provided for FM radio, CD playback and optional SIRIUS Satellite Radio.

Human g-force meter Brody



C 55 AMG Sport Sedan shown in optional Iridium Silver metallic with optional Lighting Package.

C 55 AMG Sport Sedan

Angle of attack

Staggered-width 18" wheels
CLK-inspired front-end styling
AMG-design lower bodywork
AMG-design rear lip spoiler

Launch control

Nappa leather and Alcantara upholstery
Heated 10-way power sport front seats
AMG-design instrumentation
harman/kardon® digital surround sound



Rocket science

Engine:
Handcrafted 5,439-cc AMG V-8
362 hp @ 5,750 rpm
376 lb-ft of torque @ 4,000 rpm

Transmission:
Driver-adaptive 5-speed automatic with
Touch Shift, AMG SpeedShift
programming and fingertip manual mode



12 In a world where performance-car style seems to be far more common than actual performance, the C 55 AMG Sport Sedan gives you both. No doubt, the C 55 looks the part of a true sports car—with CLK coupe-inspired front sheet metal, aggressive lower bodywork and staggered-width 18" wheels.¹ But the C 55 also drives the part, with a massively powerful handcrafted AMG V-8 engine churning out 362 horsepower and a 0-60 rush of just 4.9 seconds.² A 5-speed automatic puts manual-style shifting right at Brody's fingertips with steering wheel-mounted buttons, while AMG SpeedShift™ programming delivers 35% quicker gear changes. Huge 4-wheel AMG disc brakes bring the C 55 to an almost instant stop. Inside the C 55's high-performance cabin, highly supportive sport front seats are wrapped in luxurious Nappa leather with Alcantara upper bolsters, while the doors and console are trimmed in cool aluminum. It's all designed to move you as eagerly as the red needle on the 200-mph speedometer.³ Sorry, no neon lighting. Actually, we take that back. We're not sorry.

¹ AMG 18" wheels and accompanying high-speed-rated tires provide substantially increased treadwear and reduced ride comfort compared to H-rated tires. Serious wheel and tire damage may occur if the vehicle is operated on rough or damaged road surfaces or upon encountering road debris or obstacles.
² Stated rates of acceleration are based upon manufacturer's track results and may vary depending upon model, environmental and road surface conditions, driving style, elevation and vehicle load.
³ Obey local speed laws. Top speed electronically limited to 155 mph.



C-Class Sport **PERFORMANCE**

>> **C 230 Sport Sedan**

Engine:

New-generation 2.5-liter DOHC V-6
201 hp @ 6,200 rpm
181 lb-ft of torque @ 2,700-5,000 rpm

Transmissions:

Standard short-throw 6-speed manual
Optional driver-adaptive 7-speed
automatic with Touch Shift



>> **C 350 Sport Sedan**

Engine:

New-generation 3.5-liter DOHC V-6
268 hp @ 6,000 rpm
258 lb-ft of torque @ 2,400-5,000 rpm

Transmissions:

Standard short-throw 6-speed manual
Optional driver-adaptive 7-speed
automatic with Touch Shift



C 230 Sport Sedan shown in Mars Red with optional Sunroof Package.



C 350 Sport Sedan shown in Black with optional Sunroof and Lighting Packages, and dealer-installed accessory chrome mirrors.

7-speed Touch Shift automatic 

 6-speed manual

Standard on every C 230 and C 350 Sport Sedan is a precise and slick-shifting 6-speed manual transmission with short throws and crisp action. As an option, you can hook your C-Class up with the first 7-speed automatic in the car biz. Why seven speeds? More gears means a smaller rpm drop with each upshift, for seamless performance. It also means we can give you a snappier first gear for quicker takeoffs, and a long-legged top gear for quieter, more economical cruising. And with its Touch Shift feature, just flick the lever to the left or right of Drive for the fun of manual-style control.



You've heard of the 24 Hours of Le Mans. How about the 24 Minutes of Le Commute? With a C-Class Sport, it's a competition-inspired drive to work each morning. A quick snick of the gearshift and you're the next Juan Manuel Fangio! Whether you've got the new-generation 2.5-liter V-6 in the C 230 or the even more assertive 3.5-liter V-6 in the new C 350, acceleration is brisk and cruising is super-smooth. A radically advanced variable intake system and 24-valve DOHC design mean there's loads of torque all the time, to launch you off the line and keep you in the sweet spot as the needles eagerly climb the gauges. We're not suggesting you break any laws, of course. But if you aren't careful, you might even get to work early.

¹ Give yourself 10 points if you knew that Fangio was a famous Mercedes-Benz racecar driver of the 1950s.

World-renowned racecar drivers

C-Class Sport Sedan HANDLING

C 230 Sport Sedan / C 350 Sport Sedan / C 55 AMG Sport Sedan

Sport-tuned suspension
Quick-ratio rack-and-pinion steering
Electronic Stability Program (ESP)

Staggered-width 17" alloy wheels and Z-rated high-performance tires¹
(18" wheels and tires² on C 55 AMG)
Perforated front brake rotors with multipiston calipers



Get a grip

That sporty 3-spoke steering wheel isn't just for show, you know. We intend for you to put it to exhilarating use on every hairpin turn and twisting ribbon of asphalt you can find. With just 2.8 turns lock-to-lock, the rack-and-pinion steering is quick and precise. The handling response is sharper than an as-seen-on-tv knife: A wide stance, predatory ride height, and sport-tuned springs and shock absorbers all enhance the 4-wheel independent multilink suspension. Staggered-width 17" wheels and Z-rated high-performance tires¹ are wider at the rear of the car to maximize traction during acceleration, while the front tires are sized to keep the steering nimble and crisp. And the C 55 AMG's cornering ability is taken up yet another notch with 18" wheels,² AMG-developed coil springs and shock absorbers, thicker stabilizer bars and recalibrated ESP programming.

¹ Z-rated tires are optimized for performance driving and may provide reduced ride comfort, increased tire noise, substantially increased treadwear and greater susceptibility to damage compared with H-rated tires. ² AMG 18" wheels and accompanying high-speed-rated tires provide substantially increased treadwear and reduced ride comfort compared to H-rated tires. Serious wheel and tire damage may occur if the vehicle is operated on rough or damaged road surfaces or upon encountering road debris or obstacles. ³ No system, no matter how sophisticated, can repeal the laws of physics or overcome careless driving actions. Please always wear your seat belt. ⁴ Braking effectiveness also depends on proper brake system maintenance, and tire and road conditions.

C 350 Sport Sedan shown in Black with dealer-installed accessory rear spoiler.

Sport Sedan ▾

AMG Sport Sedan ▾

Accessory 18" wheel ▾

16



7.5x17 front, 8.5x17 rear



7.5x18 front, 8.5x18 rear



Electronic Stability Program and traction control

It's not enough to expect the unexpected. You've got to be able to react as well. Our Electronic Stability Program (ESP) continuously monitors your steering and braking actions while you're cornering and compares them to the actual vehicle path. If it senses the onset of plowing (understeer) or fishtailing (oversteer), ESP brakes individual wheels and/or reduces excess engine power, to help keep you on course. ESP also incorporates traction control to help counteract wheelspin during acceleration.³

4-wheel disc brakes with ABS and Brake Assist

Along with standard 4-wheel antilock disc brakes, every C-Class benefits from our emergency-sensing Brake Assist. Mercedes-Benz research showed that drivers tend not to brake hard enough, soon enough, in an emergency. So we invented Brake Assist, which senses panic stopping by the speed at which you depress the brake pedal and automatically applies all available braking boost immediately. By helping to eliminate the delay caused by human nature, Brake Assist can potentially reduce stopping distances when it matters most.⁴

>> Active safety

To help you avoid an accident:
 Electronic Stability Program (ESP)
 4-wheel multilink sport-tuned suspension
 Quick-ratio rack-and-pinion steering
 4-wheel disc brakes with ABS and Brake Assist

>> Passive safety

To help protect you in certain accidents:
 Adaptive dual-stage front air bags
 Front side-impact air bags
 Head Protection Curtains
 Reinforced body structure
 Outboard seat-belt Emergency Tensioning Devices and belt force limiters
 Active front head restraints, three rear head restraints
 Optional Tele Aid (standard on C55 AMG)



> New active head restraints

In the event of a rear-end collision, active front head restraints reduce the distance between the head restraint and the head. As a result, rearward movement of the head is limited, thereby reducing the chances of “whiplash” type injuries to the cervical spine.



> Advanced seat belts

All four outboard seat belts feature Emergency Tensioning Devices (ETDs), which help remove seat-belt slack in a sufficiently severe front or rear impact, and belt force limiters, which can help reduce the peak deceleration forces on belted occupants.

> Six standard air bags

Every C-Class provides the 8-way protection of six standard air bags, including adaptive dual-stage front air bags, front side-impact air bags, and Head Protection Curtains along the side windows for all four outboard occupants.¹ Rear side-impact air bags are optional.²

> Occupant Classification System

OCS automatically turns the front passenger’s front air bag on or off – or helps determine its inflation rate – based on the weight category determined by weight sensor readings from the front passenger seat.³



> High-strength/low-alloy steel

HSLA steel is used in critical areas throughout the C-Class body shell, to help create an exceptionally rigid structure designed to maximize integrity and minimize chassis flex for improved handling precision.



> Side-impact protection

Reinforced doors, door sills, floorpan, roof and dashboard supports in every C-Class are part of an integrated safety structure that affords formidable side-impact protection.



> Advanced crumple zones

Front and rear crumple zones feature full-width crossmembers. The front bulkhead helps transfer some impact energy around the cabin, and staggered underhood components are designed not to stack up as the front zone deforms.

> Tele Aid

The optional Tele Aid system⁴ uses GPS satellites plus a digital cellular link to provide 24-hour live assistance at the touch of any of three buttons in your C-Class. If you need help – or see someone who does – press the SOS button to summon emergency aid. The wrench button connects you to our legendary Roadside Assistance. There’s also an *i*-button for information. Tele Aid includes Automatic Collision Notification, which engages the SOS function if an air bag or Emergency Tensioning Device (ETD) deploys, as well as Stolen Vehicle Tracking and Remote Door Unlock service.⁵



You never know who you might run into ↗

It happens when you least expect it. And even though you can't predict an accident, you can prepare for one. It's something Mercedes-Benz has been doing for 65 years now. Our integrated approach to safety starts by optimizing your ability to stay out of harm's way, with responsive handling and features such as our Electronic Stability Program (ESP) and emergency-sensing Brake Assist. When a collision is simply unavoidable, the C-Class is prepared to help protect you with a robust structure and advanced safety technologies, including six standard air bags and an advanced Occupant Classification System. You might not know what lies around the corner, but you can drive confidently knowing your C-Class Sport Sedan is always ready for an impromptu meeting.

¹ WARNING: THE FORCES OF A DEPLOYING AIR BAG CAN CAUSE SERIOUS OR FATAL INJURY TO A CHILD UNDER AGE 13. THE SAFEST SEATING POSITION FOR YOUR CHILD IS IN THE REAR SEAT, BELTED INTO AN APPROPRIATE, PROPERLY INSTALLED CHILD SEAT, OR CORRECTLY WEARING A SEAT BELT IF TOO LARGE FOR A CHILD SEAT. ² Rear side-impact air bags are standard on the C 55 AMG. ³ C 55 AMG does not include OCS and features the BabySmart system, which automatically deactivates the front passenger's front air bag when an accessory BabySmart-compatible child seat is properly installed. OCS IS DESIGNED TO TURN THE FRONT PASSENGER'S FRONT AIR BAG OFF WHEN THE SYSTEM SENSES THE WEIGHT OF A TYPICAL CHILD 12 MONTHS OLD OR LESS, PLUS THE WEIGHT OF A STANDARD APPROPRIATE CHILD RESTRAINT. WITH THE BABYSMART SYSTEM, A CHILD UNDER 13 MUST NOT USE THE FRONT SEAT UNLESS THE CHILD IS BELTED INTO AN APPROPRIATE, PROPERLY INSTALLED BABYSMART-COMPATIBLE CHILD SEAT AND THE "PASSENGER AIR BAG OFF" INDICATOR REMAINS ILLUMINATED. SEE OPERATOR'S MANUAL TO DETERMINE WHICH SYSTEM YOUR VEHICLE HAS, FOR IMPORTANT ADDITIONAL INFORMATION ON THESE SYSTEMS, AND FOR FURTHER INFORMATION REGARDING THE TRANSPORTATION OF CHILDREN HEAVIER THAN A TYPICAL 12-MONTH-OLD. ⁴ Standard on C 55 AMG. ⁵ When equipped with Tele Aid, first year's Tele Aid Security & Care service provided at no additional cost with subscription. Subscription and acquaintance call required for service to be active. System operates only where cellular and GPS coverage are available, and requires adequate power supply. Owner must authorize stolen vehicle tracking with a PIN code and file a police report.

ENGINE	C 230 SPORT SEDAN	C 350 SPORT SEDAN	C 55 AMG SPORT SEDAN		
Engine type	2,496-cc DOHC 24-valve 90° V-6	3,498-cc DOHC 24-valve 90° V-6	5,439-cc AMG-built SOHC 24-valve 90° V-8		
Construction	High-pressure die-cast alloy cylinder block. Alloy heads. Counter-rotating balance shaft	High-pressure die-cast alloy cylinder block. Alloy heads. Counter-rotating balance shaft	High-pressure die-cast alloy cylinder block. Alloy heads. Lightweight camshafts. Reinforced engine block, oil pan structure, pistons, connecting rods, crankshaft and valvetrain		
Net power	201 hp @ 6,200 rpm	268 hp @ 6,000 rpm	362 hp @ 5,750 rpm		
Net torque	181 lb-ft @ 2,700–5,000 rpm	258 lb-ft @ 2,400–5,000 rpm	376 lb-ft @ 4,000 rpm		
Compression ratio	11.2:1	10.7:1	11.0:1		
Induction	Dual overhead camshafts with continuously variable intake and exhaust timing . Magnesium 2-stage resonance intake manifold increases intake runner length at lower rpm for improved response. Electropneumatic turbulence flaps at start of intake path help increase intake airflow speed at midrange rpm for greater air-fuel mixture swirling and stronger, more complete combustion		Magnesium 2-stage resonance intake manifold increases intake runner length at lower rpm for improved response		
Fuel and ignition system	ME 9.7 engine management. Integrated sequential multipoint fuel injection and ignition with individual cylinder control of fuel spray, spark timing and antiknock. Electronic throttle. One high-energy ignition coil and spark plug per cylinder. 100,000-mile spark-plug intervals		ME 2.8.1 engine management. Integrated sequential multipoint fuel injection and phased twin-spark ignition with individual cylinder control of fuel spray, spark timing and phase, and antiknock. Electronic throttle. Two high-energy ignition coils and two spark plugs per cylinder. 100,000-mile spark-plug intervals		
Fuel requirement	Premium unleaded gasoline , 91 pump octane	Premium unleaded gasoline , 91 pump octane	Premium unleaded gasoline , 91 pump octane		
Fuel tank capacity	16.4 gal/62.0 liters (with 2.1-gal/8.0-liter reserve)	16.4 gal/62.0 liters (with 2.1-gal/8.0-liter reserve)	16.4 gal/62.0 liters (with 2.1-gal/8.0-liter reserve)		
Exhaust system	Single sport-tuned with polished stainless-steel tip	Single sport-tuned with polished stainless-steel tip	Dual AMG-tuned low-backpressure with four polished stainless-steel tips		
DRIVETRAIN					
Manual transmission Type	Standard Fully synchronized 6-speed with direct-action short-throw shifter and clutch-starter interlock	Standard	Not available		
Automatic transmission Type	Optional 7-speed automatic	Optional 7-speed automatic	Standard AMG-enhanced 5-speed automatic		
Driver-adaptive control Touch Shift Shift into Optimum Gear	Electronically controlled shifting. Driver-adaptive programming adjusts shift points to the driver's current driving style. Touch Shift allows driver to manually downshift and allow upshifts by nudging the shift lever left or right from the Drive position. Shift into Optimum Gear programming allows one-touch selection of the best gear for maximum acceleration or engine braking by holding the shift lever to the left of Drive for one second				
Comfort mode	Driver-selectable Comfort mode starts vehicle moving in 2nd gear or a second Reverse gear, and upshifts at lower rpm, to help improve control on slippery surfaces				
Display	Instrument-cluster readout of selected gear range and Standard/Comfort mode	Instrument-cluster readout of selected gear range and Standard/Comfort mode	Instrument-cluster readout of selected gear range and Standard/Comfort/Manual mode		
AMG transmission enhancements	Not available		Standard AMG SpeedShift™ programming provides up to 35% faster gear changes, automatically downshifts during braking, prevents unwanted upshifting while cornering, offers one-touch selection of the best gear for maximum acceleration (Shift into Optimum Gear), and features torque converter lockup in all forward gears Fingertip manual mode allows direct-access shifting through forward gears via buttons on back of upper steering-wheel spokes (left button downshifts, right button upshifts) or via Touch Shift feature of shift lever, and will automatically intervene only to select 1st gear when the vehicle stops. In Standard and Comfort modes, the steering-wheel buttons operate the Touch Shift feature		
Drive configuration	Rear-wheel drive	Rear-wheel drive	Rear-wheel drive		
Rear axle ratio	3.27:1	2.82:1	3.06:1		
TRACTION / STABILITY					
Electronic Stability Program (ESP)	ESP compares the driver's intended course, via steering and braking inputs, to the vehicle's response, via lateral acceleration, rotation (yaw) and individual wheel speeds. ESP then brakes individual front or rear wheels and/or reduces excess engine power as needed to help correct understeer (plowing) or oversteer (fishtailing). ESP also integrates all-speed traction control, which senses drive-wheel slip under acceleration and individually brakes the slipping wheel or wheels, and/or reduces excess engine power, until control is regained ¹				
PERFORMANCE	MANUAL	AUTOMATIC	MANUAL	AUTOMATIC	AUTOMATIC
Acceleration, 0–60 mph²	Final data not available at time of printing. Please see your dealer			4.9 seconds	
Fuel economy, EPA³/highway estimate⁴	Final data not available at time of printing. Please see your dealer			16/22 mpg	

SUSPENSION	C 230 SPORT SEDAN	C 350 SPORT SEDAN	C 55 AMG SPORT SEDAN
Front suspension	Independent 3-link with antidive geometry. Enlarged stabilizer bar		
Rear suspension	Independent 5-arm multilink with geometry for antisquat and alignment control. Enlarged stabilizer bar		
Springs and shock absorbers	Lowered ride height. Front coil springs over sport-tuned gas-pressurized shock absorbers. Separate rear coil springs and sport-tuned shock absorbers		AMG-tuned front coil springs over AMG gas-pressurized shock absorbers. Separate AMG-tuned rear coil springs and AMG gas-pressurized shock absorbers
STEERING			
Steering type	Quick-ratio rack-and-pinion with power assist and integrated hydraulic damper. Steering wheel turns: 2.8 lock-to-lock		
Turning circle	35.3 ft/10.76 m curb-to-curb	35.3 ft/10.76 m curb-to-curb	35.3 ft/10.76 m curb-to-curb
WHEELS / TIRES			
Wheels, aluminum-alloy	5-spoke design 7.5Jx17 front—8.5Jx17 rear	5-spoke design 7.5Jx17 front—8.5Jx17 rear	Polished AMG double-spoke design ⁵ 7.5Jx18 front—8.5Jx18 rear
Tires, steel-belted radial	225/45ZR17 front— 245/40ZR17 rear, high-performance ⁶	225/45ZR17 front— 245/40ZR17 rear, high-performance ⁶	225/40ZR18 front— 245/35ZR18 rear, high-performance ⁵
BRAKES			
Brake system	Dual-circuit power-assisted 4-wheel disc	Dual-circuit power-assisted 4-wheel disc	Dual-circuit power-assisted 4-wheel disc
Brake discs and calipers, front	13.6" perforated and internally ventilated discs, dual-piston fixed calipers	13.6" perforated and internally ventilated discs, dual-piston fixed calipers	13.6" perforated and internally ventilated discs, enlarged AMG composite 4-piston fixed calipers
Brake discs and calipers, rear	11.4" solid discs, single-piston floating calipers	11.4" solid discs, single-piston floating calipers	11.8" internally ventilated discs, dual-piston fixed calipers
Antilock Braking System (ABS)	ABS senses impending wheel lockup under heavy braking and pumps the front brakes individually or the rear brakes together (to help maintain stability) as needed up to 30 times per second, to prevent lockup and maintain steering ability		
Brake Assist	Brake Assist senses emergency braking via the speed at which the driver presses the brake pedal and immediately applies maximum available power boost, potentially reducing the overall stopping distance by eliminating the delay caused by a common human tendency not to brake hard enough, soon enough. Letting up on the brake pedal releases Brake Assist ⁷		
EXTERIOR DIMENSIONS			
Wheelbase	106.9 in/2,715 mm	106.9 in/2,715 mm	106.9 in/2,715 mm
Overall length	178.4 in/4,531 mm	178.4 in/4,531 mm	181.8 in/4,617 mm
Overall height	55.6 in/1,412 mm	55.6 in/1,412 mm	55.6 in/1,412 mm
Overall width	68.0 in/1,728 mm	68.0 in/1,728 mm	68.0 in/1,728 mm
Track, front—rear	59.3 in/1,506 mm—58.1 in/1,476 mm	59.3 in/1,506 mm—58.1 in/1,476 mm	59.3 in/1,506 mm—58.0 in/1,473 mm
Coefficient of drag	0.27	0.27	0.27
Curb weight, manual automatic	3,405 lb/1,545 kg 3,450 lb/1,565 kg	3,450 lb/1,565 kg 3,495 lb/1,585 kg	— 3,540 lb/1,605 kg
INTERIOR DIMENSIONS ⁸			
Headroom, front	38.9 in/987 mm	38.9 in/987 mm	38.9 in/987 mm
Legroom, front	41.7 in/1,059 mm	41.7 in/1,059 mm	41.7 in/1,059 mm
Hiproom, front	51.9 in/1,318 mm	51.9 in/1,318 mm	51.9 in/1,318 mm
Shoulder room, front	53.1 in/1,350 mm	53.1 in/1,350 mm	53.1 in/1,350 mm
Headroom, rear	37.3 in/948 mm	37.3 in/948 mm	37.3 in/948 mm
Legroom, rear	33.0 in/838 mm	33.0 in/838 mm	33.0 in/838 mm
Hiproom, rear	54.5 in/1,384 mm	54.5 in/1,384 mm	54.5 in/1,384 mm
Shoulder room, rear	54.3 in/1,378 mm	54.3 in/1,378 mm	54.3 in/1,378 mm
Cabin capacity	85.5 cu ft/2,506 liters	85.5 cu ft/2,506 liters	85.5 cu ft/2,506 liters
Trunk capacity	12.2 cu ft/345 liters	12.2 cu ft/345 liters	12.2 cu ft/345 liters

1 No system, regardless of how advanced, can overcome physics or correct careless driving. Best performance in snow is obtained with winter tires. Please always wear your seat belt.

2 Stated rates of acceleration are based upon manufacturer's track results and may vary depending upon model, environmental and road surface conditions, driving style, elevation and vehicle load.

3 2005 EPA estimated fuel economy. Compare the estimated mpg to the estimated mpg of other vehicles. You may get different mileage depending on how fast you drive, weather conditions and trip length. 2006 data not available at time of printing. See your dealer.

4 Your actual highway mileage will probably be less than the highway estimate.

2005 data shown. See your dealer for final 2006 data.

5 AMG 18" wheels and accompanying high-speed-rated tires provide substantially increased treadwear and reduced ride comfort compared to H-rated tires. Serious wheel and tire damage may occur if the vehicle is operated on rough or damaged road surfaces or upon encountering road debris or obstacles.

6 Z-rated tires are optimized for performance driving and may provide reduced ride comfort, increased tire noise, substantially increased treadwear and greater susceptibility to damage compared with H-rated tires.

7 Braking effectiveness also depends on proper brake system maintenance, and tire and road conditions.

8 Interior dimensions listed are with optional power sunroof.

C230
C350
C55 AMG

EXTERIOR APPEARANCE

- □ ■ Power tilt/sliding tinted glass sunroof with one-touch open/close
- ■ ■ AMG-design lower bodywork: front air dam with mesh air intakes, side skirts and rear apron (with CLK-inspired design on C55 AMG)
- ■ ■ 5-spoke staggered-width 17" alloy wheels
- — ■ AMG double-spoke staggered-width 18" alloy wheels²
- ■ ■ Black grille with chrome ribs and surround. Hood-mounted Star
- — ■ Chrome slat-type grille. Hood-mounted Star
- ■ ■ Color-keyed door handles
- ■ ■ Chrome trim on bumpers, rub strips and side window sills
- ■ ■ Nano-particle clearcoat technology offers highly durable, deep-gloss paint finish and improved resistance to minor scratches, swirl marks and environmental damage
- ■ ■ Blue-tinted glass

EXTERIOR FEATURES

- ■ ■ Dual power mirrors, linked to seat memory³ and automatically heated
- □ ■ Parking-assist right-side mirror can tilt down upon shifting to Reverse³
- □ ■ Auto-dimming left-side rearview mirror
- ■ ■ Electrically heated rear window with auto-shutoff based on time and outside temperature
- ■ ■ Dual aero-blade windshield wipers. Heated windshield washer nozzles

EXTERIOR LIGHTING

- ■ ■ Variable-focus halogen headlamps with clear high-impact polycarbonate lenses
- ■ ■ Halogen front foglamps, in front apron. Single red rear foglamp, integrated in left taillamp cluster
- ■ ■ Driver-selectable light-sensing headlamps can be set via the Auto position of the headlamp switch to automatically illuminate in darkness, and when entering dark tunnels or parking garages
- ■ ■ Driver-programmable Daytime Running Lamps illuminate low-beam headlamps at reduced intensity (full intensity for optional Bi-Xenon lamps) in daylight, with auto-on override in darkness
- ■ ■ Automatic lamp substitution uses a nearby lamp if a critical bulb fails
- ■ ■ Touch Turn Signals flash three times with one touch of turn-signal lever, for lane-changing. Auxiliary LED turn signal indicators are integrated with side mirror housings

C230
C350
C55 AMG

LOCKING / SECURITY

- ■ ■ SmartKey uses an electronic code to unlock the steering column and ignition. Removing SmartKey from ignition disables engine computer to help prevent unauthorized starting
- ■ ■ SmartKey remote control integrates:
 - Door lock/unlock buttons
 - Trunk opener with valet lockout
 - Removable valet key
 - Panic alarm
 - Driver may selectively unlock only the driver's door and fuel filler, or all doors plus the trunk and fuel filler
- ■ ■ SmartKey remote locking uses redundant infrared and radio-frequency signals for improved range, and rolling-code signal for protection from transmitter cloning
- ■ ■ SmartKey offers infrared-remote opening/closing of windows (plus sunroof, if equipped) from outside the car
- ■ ■ Driver-programmable driveaway locking can automatically lock all the doors when the car reaches 9 mph
- ■ ■ Night security illumination uses the car's exterior lights to help illuminate a path after parking. Driver-programmable intervals allow lights to stay on for 60, 45, 30 or 15 seconds, or not at all
- ■ ■ Locator lighting uses the car's lights to help light a return path when the car is remote-unlocked in darkness. Unlocking car activates illuminated entry system
- ■ ■ Automatic antitheft alarm system with towaway protection and remote panic feature
- ■ ■ Emergency trunk release, located inside cargo area and illuminated for 60 minutes after trunk lid is closed
- □ ■ Integrated 3-button garage door control, compatible with HomeLink[®] components and some other systems
- □ ■ Tele Aid GPS-based Stolen Vehicle Recovery allows law enforcement agencies to track and recover stolen vehicle⁴
- □ ■ Tele Aid Remote Door Unlock allows owner to have doors automatically unlocked in the event the SmartKey becomes locked inside vehicle⁴
- □ ■ Tele Aid Automatic Alarm Notification alerts Mercedes-Benz to contact vehicle owner if antitheft alarm sounds⁴

INTERIOR FEATURES

- ■ ■ Multifunction steering wheel provides convenient controls for basic functions of audio system and optional phone, plus operation of multifunction display (see Instrumentation, at right)
- — ■ Steering wheel-mounted manual gearshift controls
- ■ ■ Power front and rear side windows, with one-touch express-up/down
- — ■ 4-way (tilt/telescoping) manually adjustable steering column
- □ ■ 4-way (tilt/telescoping) power steering column, position linked to driver's seat memory. Driver-programmable easy-exit feature can raise steering wheel when SmartKey is removed from ignition, and restore position when key is reinserted
- ■ ■ Electronic cruise control
- □ ■ Auto-dimming rearview mirror
- ■ ■ Delayed-shutoff front courtesy lamps. Dual front reading lamps
- ■ ■ Entrance lamps in front doors. Rear-cabin courtesy lamp. Dual illuminated vanity mirrors
- ■ ■ Height-adjustable front center armrest with dual enclosed storage compartments and 3-way lid (upper tray opens from left or right, lower compartment from front). Illuminated 2-tier glovebox
- ■ ■ Retractable large-capacity dual front cupholder. Pockets in all doors. Parcel net in right front footwell
- ■ ■ Magazine pockets on both front seatbacks
- ■ ■ Folding rear center armrest with slide-out dual cupholder
- ■ ■ Illuminated, carpeted cargo area

■ STANDARD
□ OPTIONAL
— NOT AVAILABLE

C230
C350
C55 AMG

CLIMATE CONTROL

- ■ ■ Dual-zone CFC-free automatic climate control with dual rotary temperature controls, and automatic control of blower speed and airflow distribution (with manual override)
- ■ ■ Upper and lower temperature sensors help to compensate for the effects of direct sunlight and cabin airflow, to maintain the selected temperature setting more consistently and accurately
- ■ ■ Dash-top diffuser vent
- ■ ■ Rear-cabin air vents at rear of front console
- ■ ■ Electrostatic dust and pollen filter
- ■ ■ Tunnel mode offers one-touch closing of all windows, the sunroof (if equipped) and cabin air intake by pressing and holding the air-recirculation button. Pressing button again restores previous window and sunroof positions

SEATING

- — ■ 10-way adjustable sport front seats, with power height and recline
- □ ■ 10-way power sport front seats, each with 3-position memory. Driver's seat memory includes steering column and outside mirror positions
- ■ ■ Driver's adjustable lumbar support
- □ ■ Heated front seats
- □ ■ 60/40-split folding rear seatbacks and flip-forward seat cushions

UPHOLSTERY / TRIM

- ■ ■ M-B Tex upholstery with leather front seating inserts
- — ■ AMG-design Nappa leather upholstery with Alcantara shoulder inserts
- ■ ■ Black leather-trimmed 3-spoke sport steering wheel with raised thumbgrips and Silver buttons
- ■ ■ Black leather-trimmed and Silver sport shift knob
- — ■ AMG-design color-keyed Nappa leather-trimmed sport shift knob
- ■ ■ Rubber-studded aluminum pedals, including parking brake
- ■ ■ Silver linear-pattern aluminum trim on doors, dash and console, with polished chrome highlights
- ■ ■ Velour floor carpeting and floor mats (AMG floor mats on C55 AMG)

AUDIO / TELEMATICS

- ■ ■ AM/FM stereo/weatherband radio. In-dash single-CD player with MP3 capability
- ■ ■ In-dash audio system operating panel integrates controls and displays for the radio, CD player, optional glovebox-mounted 6-disc CD changer and optional portable digital telephone
- ■ ■ 6-speaker audio system. Automatic speed-sensitive volume adjustment
- □ ■ harman/kardon[®] LOGIC7[®] digital surround sound system:
 - 12 speakers, including dual surround speakers and a subwoofer
 - 7.1-channel amplifier with 320 watts total output
 - Multichannel digital surround-sound technology developed for the professional recording industry, to provide a natural and realistic sound stage
 - Digital Dynamic Volume Control, to help preserve the sound balance under all driving conditions
- ■ ■ Fiber-optic network offers precise, high-speed communication among components. Factory preparation for optional CD changer and cellular phone, using fiber-optic network
- □ ■ Tele Aid system uses GPS satellites plus a cellular link to provide 24-hour live assistance for: emergency aid (SOS button), information (i-button) or Roadside Assistance (wrench button)
 - Basic Tele Aid Security & Care service includes Automatic Collision Notification, Stolen Vehicle Recovery, Remote Door Unlock service and Dealer Connect⁴

C230
C350
C55 AMG

INSTRUMENTATION

- ■ ■ Electronic analog speedometer, tachometer and gauges for fuel and coolant temperature, with hooded chrome rings, black faces, white markings and white nighttime backlighting
- — ■ AMG-design electronic analog 200-mph speedometer,⁵ tachometer and fuel/coolant temperature gauges, with chrome rings, silver-accented black faces, white markings and white nighttime backlighting
- ■ ■ Digital display for clock and Touch Shift gear/mode selection
- ■ ■ Multifunction display in instrument cluster can be scrolled via steering-wheel controls to operate and display various menus and vehicle features:
 - Odometer, resettable trip meter and outside temperature indicator
 - Digital speedometer, Maintenance System (see below), and engine oil-level check
 - Radio station, CD player/optional CD changer, iPod[®] playlist/track (with accessory Apple[®] iPod integration kit)
 - Navigation system route guidance (optional)
 - Vehicle reminder and malfunction messages
 - Driver-programmable settings for instrument cluster, clock, lighting, vehicle and convenience features
 - Trip computer (elapsed time, fuel consumption, distance to empty)
 - Mobile phone book (optional)
- ■ ■ Mercedes-Benz Maintenance System displays distance remaining to next basic maintenance service, indicates type of service due, and provides automatic reminder feature when service interval draws near
- ■ ■ Audible reminders to fasten seat belts, release parking brake, switch off headlamps, close sunroof and remove key from ignition

RESTRAINT SYSTEMS

- ■ ■ Integrated Restraint System⁷:
 - Driver and front passenger are each provided with an adaptive dual-stage front air bag, side-impact air bag, active head restraint, and 3-point seat belt with Emergency Tensioning Device (ETD) and belt force limiter
 - Outboard rear passengers are each provided with a 3-point seat belt with ETD and belt force limiter
 - Center rear passenger is provided with a 3-point seat belt
- ■ ■ Head Protection Curtains: In a side impact exceeding a preset threshold, a multi-chamber air bag deploys along the front and rear side-door windows on the affected side of the car
- □ ■ Rear door-mounted side-impact air bags
- ■ ■ Adaptive dual-stage front air bags are deployed in response to frontal impact severity exceeding the system's deployment threshold⁷
- — ■ BabySmart[™] system automatically deactivates the front passenger's front air bag when an accessory BabySmart-compatible child seat is properly installed⁷
- ■ ■ Occupant Classification System (OCS) automatically turns the front passenger's front air bag on or off based on the weight category determined by weight sensor readings from the front passenger seat⁷
- ■ ■ ETDs are provided for all four outboard seat belts and are deployed in a front or rear impact exceeding a preset threshold of severity, or certain rollovers. A front ETD will not deploy if seat belt is unfastened
- ■ ■ Universal LATCH system (Lower Anchors and Tethers for Children) at outboard rear seating positions. Selectable passenger seat-belt retractors help secure child seats⁷
- ■ ■ Height-adjustable front shoulder belts. 3-point front seat belts are attached to seat frames at both lower points
- ■ ■ Automatically height-adjusting outboard rear shoulder belts
- ■ ■ 4-way adjustable front head restraints. 10-way power front seats include power head-restraint height adjustment
- ■ ■ Active front head restraints reduce the distance between the head restraint and the head in the event of a rear-end collision, helping limit rearward movement of the head and thereby reducing the chances of "whiplash" type injuries to the cervical spine
- ■ ■ Three individually retractable rear head restraints. All three rear head restraints can be remotely retracted by the driver to help improve rearward vision when the rear seats are unoccupied

1 Also available or only available as part of an Option Package. See listing on page 24.
 2 AMG 18" wheels and accompanying high-speed-rated tires provide substantially increased treadwear and reduced ride comfort compared to H-rated tires. Serious wheel and tire damage may occur if the vehicle is operated on rough or damaged road surfaces or upon encountering road debris or obstacles.
 3 Requires 10-way power driver's seat, optional on C230 Sport Sedan.
 4 Tele Aid equipment includes first year's Tele Aid Security & Care service provided at no additional cost with subscription. Subscription and acquaintance call required for service to be active. System operates only where cellular and GPS coverage are available, and requires adequate power supply. Owner must authorize stolen vehicle tracking with a PIN code and file a police report. See dealer for details of telematics services.
 5 Option includes 10-way power driver's seat, memory system and power steering column.
 6 Obey all speed limits. Top speed electronically limited to 155 mph.
 7 **WARNING:** THE FORCES OF A DEPLOYING AIR BAG CAN CAUSE SERIOUS OR FATAL INJURY TO A CHILD UNDER AGE 13. THE SAFEST SEATING POSITION FOR YOUR CHILD IS IN THE REAR SEAT, BELTED INTO AN APPROPRIATE, PROPERLY INSTALLED CHILD SEAT, OR CORRECTLY WEARING A SEAT BELT IF TOO LARGE FOR A CHILD SEAT. **WITH BABYSMART SYSTEM, A CHILD UNDER 13 MUST NOT USE THE FRONT SEAT UNLESS THE CHILD IS BELTED INTO AN APPROPRIATE, PROPERLY INSTALLED BABYSMART-COMPATIBLE CHILD SEAT AND THE "PASSENGER AIR BAG OFF" INDICATOR REMAINS ILLUMINATED. OCCUPANT CLASSIFICATION SYSTEM (OCS) IS DESIGNED TO TURN THE FRONT PASSENGER'S FRONT AIR BAG OFF WHEN THE SYSTEM SENSES THE WEIGHT OF A TYPICAL CHILD 12 MONTHS OLD OR LESS, PLUS THE WEIGHT OF A STANDARD APPROPRIATE CHILD RESTRAINT. SEE OPERATOR'S MANUAL TO DETERMINE WHICH SYSTEM YOUR VEHICLE HAS, FOR IMPORTANT ADDITIONAL INFORMATION ON THESE SYSTEMS, AND FOR FURTHER INFORMATION REGARDING THE TRANSPORTATION OF CHILDREN HEAVIER THAN A TYPICAL 12-MONTH-OLD.**

C230
C350
C55 AMG

INDIVIDUAL OPTIONS

- □ ■ Driver-adaptive 7-speed electronic automatic transmission with Touch-Shift control (5-speed automatic standard on C 55 AMG)
- ■ ■ 10-way power driver's seat, with:
 - 4-way power steering column with easy-exit feature
 - 3-position memory system for seat, steering column and side mirrors
 - Parking-assist right-side mirror
- □ ■ Heated front seats
- □ ■ 60/40-split folding rear seatbacks and flip-forward seat cushions
- □ □ COMAND Cockpit Management and Data system integrates:
 - DVD-based in-dash GPS navigation system, with map database for the contiguous U.S., Canada and Oahu, Hawaii, all on a single DVD.² DVD-ROM drive concealed behind in-dash screen
 - AM/FM stereo/weatherband radio
 - In-dash single-CD player with MP3 capability
 - Controls for optional glovebox-mounted 6-CD changer and phone
 - A 6.5" color-LCD in-dash screen, with motorized opening/closing to load CD player and DVD drive
 - Ten mode-dependent soft keys alongside screen for easy access to commands and on-screen menus
- □ □ Dealer-installed accessory iPod integration kit allows any Apple® iPod® model with dock connector (sold separately) to fully integrate with audio system plus multifunction steering wheel and display. iPod docks in glovebox and its battery is recharged while it plays
- □ □ Integrated 6-disc CD changer with MP3 capability, mounted in glovebox
- □ □ SIRIUS Satellite Radio equipment (see page 25)³
- □ □ Hands-Free Communication System. (Dealer-installed accessory. Requires accessory telephone handset and cradle, sold separately. See dealer for selection)
- □ ■ Tele Aid in-car assistance system equipment⁴:
 - Tele Aid system uses GPS satellites plus a cellular link to provide 24-hour live assistance for emergency aid (SOS button), information (i-button) or Roadside Assistance (wrench button)
 - Tele Aid Security & Care service includes:
 - Automatic Collision Notification (engages SOS function if an air bag or ETD deploys)
 - GPS-based Stolen Vehicle Recovery (allows law enforcement agencies to track and recover stolen vehicle)
 - Remote Door Unlock (allows owner to have doors automatically unlocked in the event the SmartKey becomes locked inside car)
 - Automatic Alarm Notification (alerts Mercedes-Benz to contact vehicle owner if anti-theft alarm sounds)
 - Dealer Connect service
- □ ■ Rear door-mounted side-impact air bags
- □ ■ Premium leather upholstery on all seat surfaces plus door trim inserts
- - □ Hand-polished Black Birdseye Maple or Brown Poplar wood trim
- □ □ Metallic paint

C230
C350
C55 AMG

OPTION PACKAGES

- □ □ **Lighting Package:**
 - Bi-Xenon High Intensity Discharge projector low-beam and high-beam headlamps
 - Heated headlamp washers
- □ - **Entertainment Package:**
 - 320-watt 12-speaker harman/kardon® LOGIC7® digital surround sound system (standard on C 55 AMG; see page 23)
 - Glovebox-mounted 6-disc CD changer with MP3 capability
- □ - **Sunroof Package:**
 - Infrared rain sensor automatically adjusts wiper speed and intermittent wiper frequency based on amount of rainfall measured on windshield
 - Integrated 3-button garage door control, compatible with HomeLink® components and some other systems (standard on C 55 AMG)
 - Auto-dimming left-side and inside rearview mirrors (standard on C 55 AMG)
 - Power tilt/sliding glass sunroof with one-touch express-open/close (standard on C 55 AMG)
 - Power rear-window sunshade, with one-touch express-up/down
- - □ **Premium Package:**
 - Infrared rain sensor automatically adjusts wiper speed and intermittent wiper frequency based on amount of rainfall measured on windshield
 - Power rear-window sunshade, with one-touch express-up/down
 - Glovebox-mounted 6-disc CD changer with MP3 capability

C-Class options suit your driving preferences and reflect your sense of style. Choose from an array of communication, entertainment, information and security options and services that can make your in-car experience satisfying in ways you might never have imagined.



> **6-disc CD changer**

Conveniently mounted in the glovebox and fully integrated with the audio or COMAND system in your C-Class, the optional 6-disc CD changer can play conventional and MP3-coded CDs.

> **Hands-Free Communication System**

Plug one of our sleek Motorola digital phones into your C-Class and it becomes part of our optional Hands-Free Communication System.⁵ With the phone docked in the armrest cradle, your phone book is automatically downloaded into the vehicle while the phone battery charges, and the phone is connected to the vehicle's integrated antenna system. Calls are delivered through the audio system, which automatically mutes the radio or pauses the CD. You can even control calls via the multifunction steering wheel. Your Mercedes-Benz dealer offers a selection of the latest Motorola mobile phones for most major carriers.

> **SIRIUS Satellite Radio**

It's like having a music library of over two million songs in your Mercedes. Optional SIRIUS Satellite Radio³ integrates with the standard audio system and controls. Your SIRIUS subscription brings 120 all-digital coast-to-coast channels, with 65 commercial-free channels of music, from rock to country and classical to jazz, plus 55 non-musical channels that cover news, sports—including live games from the NFL, NHL[®] and NBA—and such well-known names as Discovery Channel, E!, and Radio Disney.



> **iPod integration kit**

This accessory kit fully integrates your dock-equipped Apple iPod (sold separately) with the audio system, allowing you to operate the iPod via the multifunction steering wheel and see program info in the multifunction display.



> **COMAND with DVD navigation**

The optional Cockpit Management and Data system integrates the radio, CD, GPS satellite navigation,² and controls for the optional phone and glovebox-mounted 6-CD changer into a single in-dash unit that you can access from the multifunction steering wheel. Its large color-LCD screen provides clear displays and crisp map readouts. And with its DVD-based navigation system, the maps of the contiguous U.S., Canada and Oahu, Hawaii, are all read from a single DVD. To keep your DVD maps and points of interest as up-to-date as possible, ask your dealer about our NavUpdate subscription program, which lets you receive annual DVD updates for up to three years at significant savings.



¹ Also available or only available as part of an Option Package. See listing above.

² While the navigation system provides directional assistance, the driver must remain focused on safe driving behavior, including paying attention to traffic and street signs. The driver should utilize the system's audio cues while driving and should only consult the map or verbal displays once the vehicle has been stopped in a safe place. DVD-ROM maps do not cover all areas nor all routes within an area. One U.S./Canada DVD-ROM is included with vehicle.

³ See dealer for availability details. While the SIRIUS network of satellite and terrestrial antennas provides nearly seamless service throughout the contiguous U.S., SIRIUS service may be unavailable or interrupted for a variety of reasons, including environmental or topographic conditions; in certain locations such as tunnels, parking garages, or within or next to large buildings; or near other technologies that can interfere with the SIRIUS signal. Programming subject to change. Not available in Alaska, Hawaii or Puerto Rico.

⁴ Tele Aid equipment includes first year's Tele Aid Security & Care service provided at no additional cost with subscription. Subscription and acquaintance call required for service to be active. System operates only where cellular and GPS coverage are available, and requires adequate power supply. Owner must authorize stolen vehicle tracking with a PIN code and file a police report. See dealer for details of telematics services.

⁵ For safety reasons, we encourage the driver to stop the vehicle in a safe place before answering or placing a call. Always dock the phone in the cradle for use inside the vehicle. Operating a phone or radio transmitter with its own attached or built-in antenna while the engine is running can interfere with the vehicle's electronic systems.



> **Heated front seats**

Take the chill out of even the coldest day or get some relief for your back after that hour-long spin class with optional heated front seats. Three heat settings let you select the level of soothing warmth. They're standard on the C 55 AMG.

> **harman/kardon digital surround sound**

With 320 total watts and 12 speakers, the optional harman/kardon LOGIC7 7.1-channel sound system (standard in the C 55 AMG) lets you enjoy FM radio, CDs and optional SIRIUS Satellite Radio in digital surround sound.

> **Bi-Xenon headlamps**

Bi-Xenon headlamps produce brighter, more natural light on both high and low beams for better vision over longer distances. They also feature dynamic level control to cut glare, as well as heated high-pressure washers.

PAINTWORK AND UPHOLSTERY

COLOR COMBINATIONS		BLACK	CAPRI BLUE ¹	BAROLO RED ^{1,2}	MARS RED	PEWTER ¹	GRANITE GREY ¹	DIAMOND BLACK ¹	IRIDIUM SILVER ¹	ALABASTER WHITE
PAINT COLOR /Code >		040	359	544	590	723	747	768	775	960
C 230 AND C 350 SPORT SEDANS										
UPHOLSTERY										
■ Standard M-B Tex with leather front seating inserts	BLACK	•	•	•	•	•	•	•	•	•
	ASH	•	•	•	•	•	•	•	•	•
□ Optional premium leather	BLACK	•	•	•	•	•	•	•	•	•
INTERIOR TRIM										
■ Standard Silver linear-pattern aluminum		•	•	•	•	•	•	•	•	•
C 55 AMG SPORT SEDAN										
UPHOLSTERY										
■ Standard Nappa leather with Alcantara trim	BLACK	•	•	•	•	•	•	•	•	•
	ASH	•	•	•	•	•	•	•	•	•
INTERIOR TRIM										
■ Standard Silver linear-pattern aluminum		•	•	•	•	•	•	•	•	•
□ Optional	Brown Poplar wood	•	•	•	•	•	•	•	•	•
	Black Birdseye Maple wood	•	•	•	•	•	•	•	•	•

¹ Metallic paint is optional at extra cost.

² Delayed availability. See your dealer.

³ Tele Aid equipment includes first year's Tele Aid Security & Care service provided at no additional cost with subscription. Subscription and acquaintance call required for service to be active. System operates only where cellular and GPS coverage are available, and requires adequate power supply. Owner must authorize stolen vehicle tracking with a PIN code and file a police report. See dealer for details of telematics services.

³ Traffic Information and Route Assistance are included in the optional Tele Aid Luxury & Convenience Package, or can be utilized with a per-use charge with the Tele Aid Security & Care Package. Performance of the automated voice system may vary with ambient noise. Traffic information is based on available broadcast data and is not available in all areas. Route Assistance is limited to available digitized map data which does not include all areas or all routes within an area.

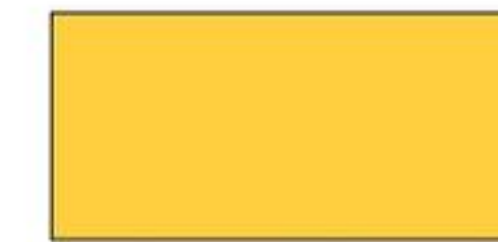
EXTERIOR PAINTWORK



040 **BLACK**



359 **CAPRI BLUE** metallic¹



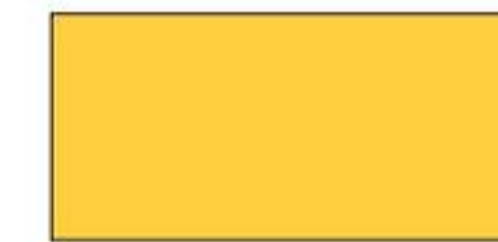
544 **BAROLO RED** metallic^{1,2}



590 **MARS RED**



723 **PEWTER** metallic¹



747 **GRANITE GREY** metallic¹



768 **DIAMOND BLACK** metallic¹



775 **IRIDIUM SILVER** metallic¹



960 **ALABASTER WHITE**

INTERIOR UPHOLSTERY



BLACK

Leather front seating inserts

■ C 230 and C 350

Premium leather

□ C 230 and C 350

Nappa leather with Alcantara trim

■ C 55 AMG



ASH

Leather front seating inserts

■ C 230 and C 350

Premium leather

□ C 230 and C 350

Nappa leather with Alcantara trim

■ C 55 AMG

INTERIOR TRIM

SILVER LINEAR-PATTERN ALUMINUM

■ All models



BROWN POPLAR WOOD

□ C 55 AMG



BLACK BIRDSEYE MAPLE WOOD

□ C 55 AMG

■ STANDARD
□ OPTIONAL

C-Class TELEMATICS

> Tele Aid

The Tele Aid system—optional on the C 230 and C 350, and standard on the C 55 AMG—uses GPS satellites plus a digital cellular link to provide 24-hour live assistance at the touch of any of three buttons in your C-Class. The SOS button is for summoning emergency aid. Press the *i*-button for information. And the wrench button connects you to our legendary Roadside Assistance. Choose from two service packages to suit your needs, whether it be assuring your peace of mind or making your commute—and your life—more convenient.³

> Tele Aid Security & Care Package

Security & Care service is our basic Tele Aid service package, and your first year's subscription is included with the standard or optional Tele Aid equipment in your vehicle at no extra charge. The package includes full use of these Tele Aid features: SOS button calling with Automatic Collision Notification, access to Roadside Assistance via the wrench button, Mercedes-Benz Information and Dealer Connect via the *i*-button, as well as our Remote Door Unlock and Stolen Vehicle Recovery services.

> Tele Aid Luxury & Convenience Package

The optional Luxury & Convenience Package includes all of the Security & Care services plus full access to our Tele Aid concierge and traffic services via the *i*-button or MBUSA.com. Traffic Information offers real-time, voice-delivered traffic reports based on your current location—within a 5-mile radius of your vehicle, or along any of up to five regular commutes you program at our website.⁴ Traffic reports are available in over 100 cities and are continually updated. Our operator-delivered nationwide Route Assistance can provide turn-by-turn driving directions. And with our Concierge Service, a personal assistant is there—instantly via the *i*-button or via e-mail—to help you with hotel or dinner reservations (or even recommendations), tickets for a flight or entertainment, directory-available phone numbers and addresses, or sending flowers and gifts. From help making appointments to finding a pet-sitting service, don't be surprised if it seems like our Concierge Service can do it all. Except maybe leaving a mint on your headrest.





The first name in service

The innovative spirit that drives us to create some of the world's finest vehicles is directly reflected in an impressive selection of owner benefits. Consider the Mercedes-Benz Roadside Assistance Program, the first of its kind and still the only one that doesn't expire. Our Mercedes-Benz Maintenance System lets you go farther than ever between scheduled oil changes. And our Customer Assistance is there for you 24 hours a day, every day. When we invented the first car in 1886, we also created the first car owner. For 120 years, it's been our passion to ensure that driving a Mercedes-Benz remains an experience that's second to none.

> Mercedes-Benz Credit

Mercedes-Benz Credit makes financing your new Mercedes the start of a great experience, with an impressive array of flexible and convenient financing options. First Class Financing[®] provides qualified customers with comprehensive, tailor-made financing packages. The First Class Lease[®] gives you the flexibility of choosing from 13- to 60-month contracts and your preferred annual mileage allowance. And with an industry-leading

lease-end process, the hardest thing you'll have to do is say goodbye to your old Mercedes as you get into your new one. MBCREDIT.com offers tools to help you decide whether purchasing or leasing is right for you, an online credit application, and the ability to view your account 24/7. To learn more about the benefits of leasing or financing through Mercedes-Benz Credit, see your Mercedes-Benz dealer or visit MBCREDIT.com.

MBUSA.com

Stay connected

These days it's all about networking. Visit MBUSA.com to learn about financing and leasing options, get specs on the latest models, check out the extensive catalog of Mercedes-Benz accessories, sneak a peek at upcoming vehicles, or even set up your own Online Portfolio. And exclusively for Mercedes-Benz drivers, Owners Online is your all-access pass to events, special promotions from prestigious retailers, and personalized offers from your Mercedes-Benz dealer. At MBUSA.com, you've got connections.



Model Selector

Find the Mercedes-Benz that's best for you based on price, performance and bodystyle.



Gallery

Choose a Mercedes-Benz model and see it from every angle in photos, wallpapers, screen savers, 360° views, At A Glance features, In Motion footage and TV commercials.



Build Your Own

Customize your vehicle with options, colors and accessories, and save it for later viewing. You can even send the particulars to your local dealer, to help them set up a test drive for you.



Purchase Inquiry

Shopping for a new Mercedes has never been simpler. Schedule a test drive, order a brochure, learn more about a model, and explore financing and leasing options.



Locate a Dealer

Finding your nearest dealer—or any dealer—is easy with detailed maps and driving directions.



Owners Online

Owners Online is an exclusive online community that offers benefits that extend beyond your car. Through Owners Online, you can access your Mercedes-Benz Credit account and configure services for your in-car Tele Aid system. This information-rich site also provides vehicle care tips, answers to frequently asked questions, exclusive offers and promotions, and advance notice of what's exciting and new at Mercedes-Benz.

> 24-hour Roadside Assistance for the life of the vehicle

The first of its kind, the Mercedes-Benz Roadside Assistance Program is still the only one that remains in effect for the entire life of the car. Our Roadside Assistance technicians can draw on years of experience and training to get you back on the road as quickly as possible!

> Mercedes-Benz warranties

Our New Vehicle Limited Warranty runs 48 months or 50,000 miles, whichever comes first. And anytime during the new-vehicle warranty coverage, you can also purchase a Mercedes-Benz Extended Limited Warranty that will provide additional protection when the New Vehicle Limited Warranty expires.²

> The Mercedes-Benz Maintenance System

We've made caring for your C-Class easier than ever. With the Mercedes-Benz Maintenance System, the service intervals are fixed and predictable—every 13,000 miles or one year (10,000 miles/1 year for AMG models)! Your car will even remind you, about a month before service is due, via an automatic display on the dashboard that also tells you which type of maintenance service is due.

> The no-charge Service Welcome

Getting proper care for your Mercedes is easiest when you go to the people who know your vehicle—and you—best: your Mercedes-Benz Center's Service Department. And to help you get acquainted, just bring your car in for a no-charge first visit between 1,000 and 3,000 miles, where your dealer will perform a diagnostic check and address any questions you might have. It's part of our no-charge Service Welcome, which also provides a check of your tires at no charge anytime before 6,500 miles.⁴

> 24-hour customer service

Our Customer Assistance Center is your one-stop source for answers. Whether you need to know how to use your audio system, find the nearest Mercedes-Benz dealer, get pricing, or learn about personal and automotive accessories, just call 1-800-FOR-MERCEDES or press the Tele Aid *i*-button in your car.⁵

> Sign and Drive

Our legendary Roadside Assistance service includes bringing you some fuel if you've run out, replacing a flat tire with your spare, or jump-starting your car if the battery dies. All at no charge, and all for as long as you're driving a Mercedes-Benz—even somebody else's!⁶ Help is as close as the Tele Aid wrench button⁵ or just a call away at 1-800-FOR-MERCEDES.

> Trip Interruption benefits

In the unlikely event that a breakdown covered by your MBUSA New Vehicle Limited Warranty occurs more than 100 miles from your home, leaves your Mercedes inoperable or unsafe to drive, and requires overnight repairs at a Mercedes-Benz Center, you'll be reimbursed up to \$300 per day for any documented expenses—for up to three days—for meals, lodging and substitute transportation.

> Alternate Transportation

When you bring your vehicle into a Mercedes-Benz Center for servicing during the warranty period, ask about your dealer's Alternate Transportation Program—so you can maintain your busy schedule while your dealer maintains your car.⁷

¹ Roadside Assistance repairs may involve charges for parts, service and towing. Depending on the circumstances, these services may be provided by an outside service, courtesy of Mercedes-Benz Roadside Assistance. ² Please see your dealer for warranty details as well as for terms, conditions and pricing for extended limited warranty options. A surcharge applies if purchased after the first 12 months. ³ Whichever comes first. Requires use of 229.5-spec oil and high-performance fleece oil filter. Driver is responsible for monitoring fluid levels and tire pressures between service visits. See Maintenance Booklet for details. ⁴ Dealer will inspect tires and set inflation pressure. Follow tire manufacturer's recommendations. ⁵ When equipped with Tele Aid, first year's Tele Aid Security and Care service provided at no additional cost with subscription. Subscription and acquaintance call required for service to be active. Service operates only where cellular and GPS coverage are available, and requires adequate power supply. ⁶ For full details of Sign and Drive services, as well as the Roadside Assistance Program, please see your dealer. ⁷ Certain restrictions may apply. Terms, conditions and dealer participation may vary.

© 2005 Mercedes-Benz USA, LLC
Marketing Communications

All illustrations and specifications contained in this brochure are based on the latest product information available at the time of publication. Mercedes-Benz reserves the right to make changes at any time, without notice, in colors, materials, equipment, specifications and models. Any variations in colors shown are due to reproduction variations of the printing process. Illustrations may include test situations. Some vehicles may be shown with non-U.S. equipment. Some vehicles are shown with optional equipment. HomeLink is a registered trademark of Prince, a Johnson Controls Company. harman/kardon and LOGIC7 are registered trademarks of Harman International Industries, Inc.

♻️ In an effort to minimize the environmental impact of this brochure, Mercedes-Benz uses a recycled coated paper that is guaranteed in writing to contain a minimum of 10% post-consumer waste.

Printed in U.S.A. / 150

MC-05-688

Mercedes-Benz USA, LLC
One Mercedes Drive
Montvale, NJ 07645
1-800-FOR-MERCEDES
MBUSA.com



C 230 Sport Sedan shown on cover in optional Iridium Silver metallic with optional Sunroof Package.



Mercedes-Benz