



TOYOTA

2024 Venza

2024 VENZA

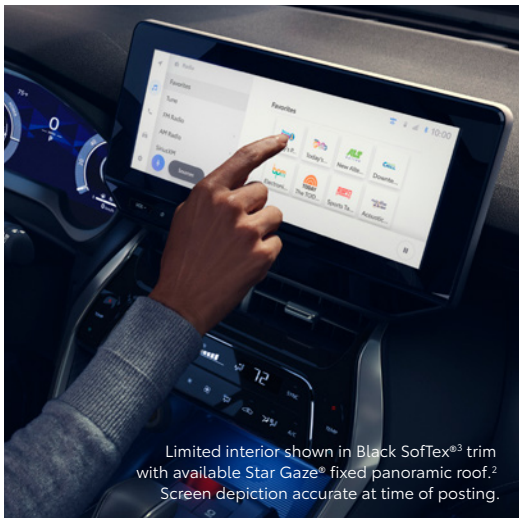
Out with the ordinary.

It's time to explore beyond the ordinary with the 2024 Toyota Venza. This all-hybrid crossover rides in a league of its own, with its elegant style, tech-focused interior and standard Electronic On-Demand All-Wheel Drive (AWD). Also available in a Nightshade Edition, Venza will make an impression on any road you take.



See numbered footnotes in Disclosures section.

Tons of advanced tech.



Limited interior shown in Black SofTex^{®3} trim with available Star Gaze[®] fixed panoramic roof.² Screen depiction accurate at time of posting.



12.3-in. touchscreen display with JBL^{®4} Premium Audio system

Technology that's tailored to your needs. With easily customizable screens, Venza's available 12.3-in. touchscreen display lets you create the perfect setup for every drive.

12.3-in. Multi-Information Display

Get totally dialed in. Venza's available fully digital gauge cluster adds a touch of elegance to the interior. Well positioned within your line of sight, the digital gauge cluster presents essential driving info, safety alerts and more.



Digital rearview mirror with HomeLink[®]

Connected to a camera in the rear, Venza's available digital rearview mirror with HomeLink^{®5} casts a clearer, wider view of what's behind you.



Hands-free power liftgate

Venza's advanced technology always seems to be one step ahead of your needs. When your hands are full after running errands, just wave your foot under the rear bumper, and Venza's standard hands-free power liftgate⁶ senses your Smart Key fob and opens automatically.



Limited shown in Coastal Gray Metallic with available Star Gaze® fixed panoramic roof.²

HYBRID

Enjoy the extra miles.

Become efficient everywhere. From daily driving to long-haul road trips. Make the best of every ride, with Venza's class-leading EPA-estimated 39 combined mpg rating.⁶²



Electronic On-Demand All-Wheel Drive

Venza's standard Electronic On-Demand All-Wheel Drive (AWD) allows you to confidently and efficiently maneuver along roadways during inclement weather.

39
EPA-est. mpg⁷



Limited interior shown in Black SofTex^{®3} trim with available Star Gaze[®] fixed panoramic roof.² Screen depiction accurate at time of posting.

INTERIOR

Lounge-level comfort.

Quality-crafted seats, soft-touch materials and an available heated, leather-trimmed steering wheel — every distinct detail inside Venza elevates your comfort.

Heated and ventilated front seats

Heat up on winter mornings or cool down on your way home from the golf course. No matter the season, you can use Venza’s available heated and ventilated front seats to make every drive feel just right.

Premium seats with contrast stitching

Venza’s available SofTex[®]-trimmed³ seats with color-keyed contrast stitching are as easy to sink into as they are to admire. And when you’re behind the wheel, its 8-way power front seats with lumbar support let you customize your seat of command. Comfortable and in control, you’ll be ready for whatever the day brings.

Ambient lighting

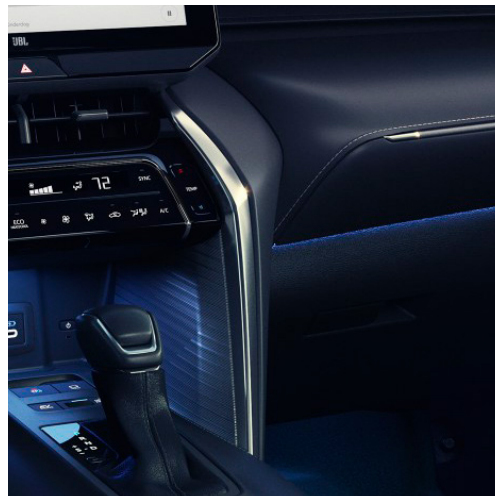
Venza knows how to set the mood. After the sun sets, Venza’s ambient lighting creates a refined atmosphere on late-night rides. Now featuring a cool-white color on the front-console buttons.

60/40 rear seats

Whether you’re picking up a vintage coffee table from the boutique downtown or packing for a weekend getaway, Venza’s 60/40 split rear seats easily fold down, so you can create the space you need — with room to spare.



Simulation shown.



See numbered footnotes in Disclosures section.

EXTERIOR

Keep heads turning.

Stunning alloy wheels, LED projector headlights and continuous, thin rear LED taillights create Venza's striking, modern look.



LED headlights

Standard LED projector headlights and dual LED Daytime Running Lights (DRL) give Venza a captivating presence, day or night.



Alloy wheels

Choose from standard 18-in. multi-spoke two-tone alloy wheels, available 19-in. multi-spoke metallic-finished alloy wheels, or blacked-out Nightshade Edition wheels, to match your sense of style.



LED taillights

From behind, Venza's distinctive taillight design acts as the perfect signature to its modern look.

See numbered footnotes in Disclosures section.



Nightshade Edition shown in Ruby Flare Pearl¹ with available Star Gaze[®] fixed panoramic roof.²

NIGHTSHADE EDITION

Style that never sets.

Venza's Nightshade Edition exterior styling features blacked-out badging, 19-in. alloy wheels and an upper grille — highlighting the distinctively stylish presence of Venza on the road or along the curb.



Nightshade Edition shown in Ruby Flare Pearl¹ with available Star Gaze[®] fixed panoramic roof.²

Technology that keeps up with you.

Take advantage of smarter and convenient technologies designed to simplify your everyday life.⁸ Trial periods are available on select models for the listed connected services.* 4G network dependent.



Safety Connect®

Round-the-clock help when the unexpected happens.⁹

- ✓ Emergency Assistance Button (SOS)
- ✓ Enhanced Roadside Assistance¹⁰
- ✓ Automatic Collision Notification
- ✓ Stolen Vehicle Locator¹¹



Service Connect

Being proactive to help keep your vehicle in peak condition.¹²

- ✓ Vehicle Health Report
- ✓ Vehicle Maintenance Alert
- ✓ Maintenance Reminder



Wi-Fi Connect

Turn your Toyota into a hotspot with 4G connectivity.¹³

- ✓ AT&T Hotspot
- ✓ Integrated Streaming for Apple Music®¹⁴
(separate subscription required)
- ✓ Integrated Streaming for Amazon Music¹⁵
(separate subscription required)



Drive Connect

Enhanced features to get you where you need to be.¹⁶

- ✓ Destination Assist¹⁷
- ✓ Intelligent Assistant¹⁸
- ✓ Cloud Navigation¹⁹



Remote Connect

Manage your vehicle, including remote start and much more.²⁰

- ✓ Remote Vehicle Start (if equipped)
- ✓ Unlock/Lock
- ✓ Remote Notifications
- ✓ Guest Driver
- ✓ Smartwatch Compatibility

*To view included trial details, please visit toyota.com/connected-services.

Entertainment, turned up.

Enhance every drive with an experience that's all about you. Whether enjoying the sounds of your favorite soundtrack or interacting with an interface that comes naturally, you're always invited to set the tone for every drive.



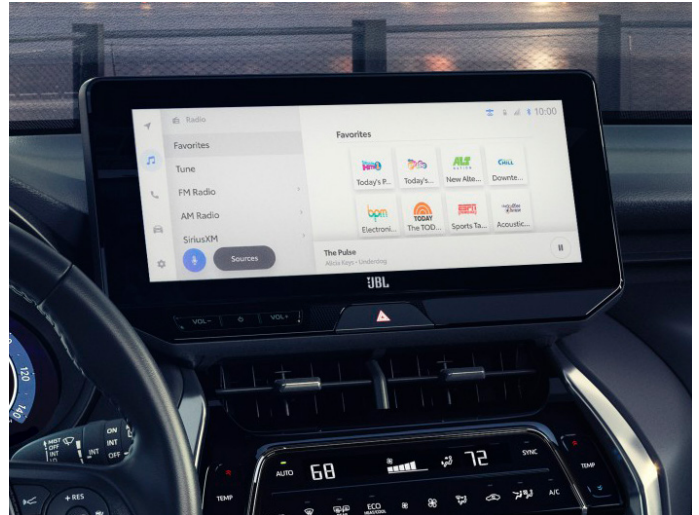
JBL® Premium Audio system

Experience the phenomenal audio of Venza's available JBL® Premium Audio system. Powered by a 1200-watt amplifier, nine JBL® speakers deliver an exceptional surround-sound experience. Precisely tuned to its cabin, Venza hits all the right notes.



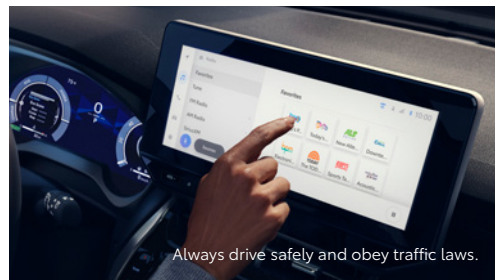
Wireless Android Auto™

Bring along a familiar interface. Connect your Android™²¹ phone to experience all your favorite music, media and messaging apps on your Venza touchscreen display. Get driving directions, send a text — even call your friends, and more — using just your voice.²²



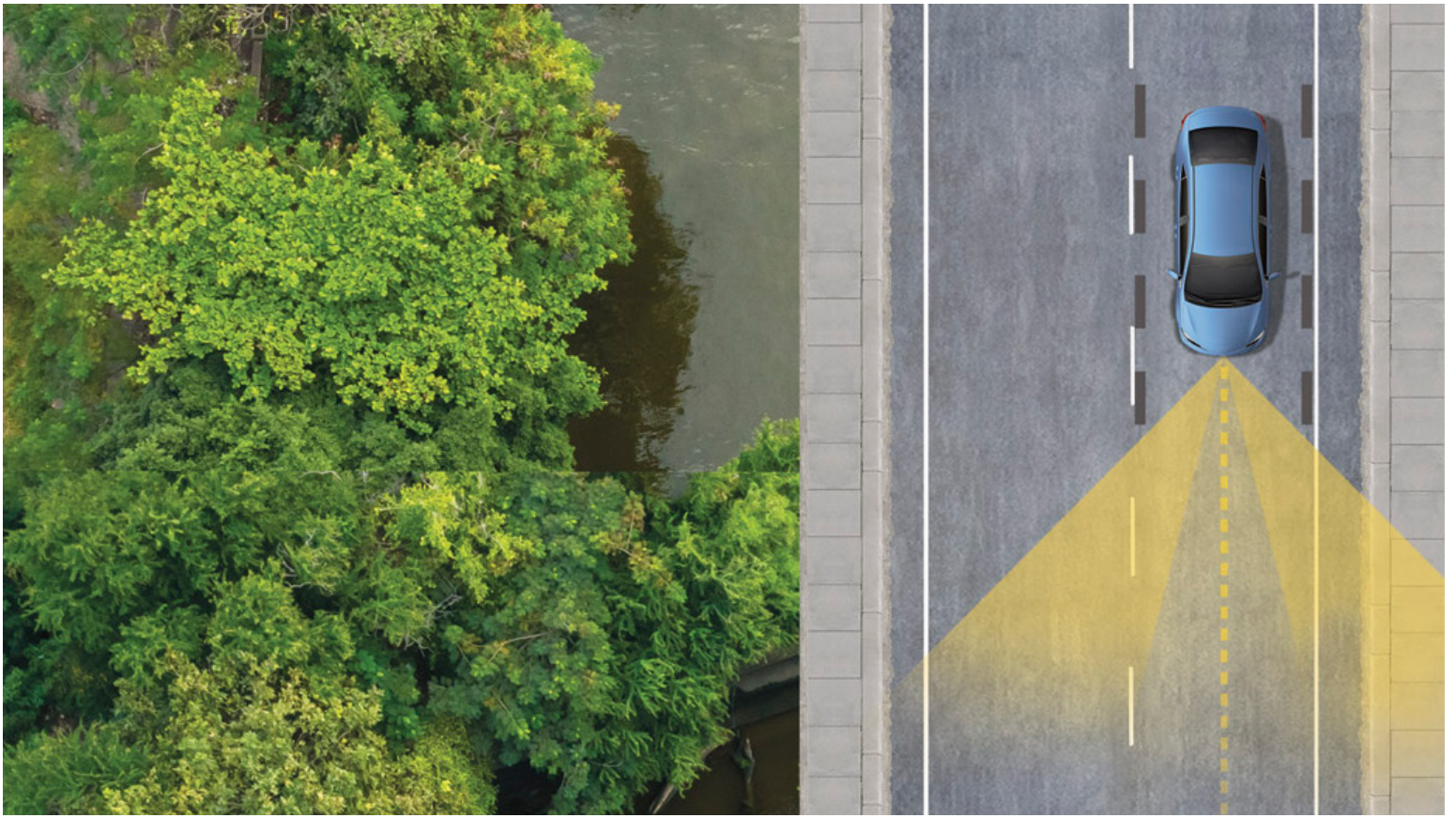
Wireless Apple CarPlay®

With wireless Apple CarPlay^{®23} compatibility now standard, you can connect your compatible iPhone^{®24} to Venza's audio multimedia system. Ask Siri^{®25} to play your favorite song, send messages, get directions and more — all while maintaining focus on your drive.



SiriusXM® Platinum Plan 3-month trial

SiriusXM^{®26} has premium entertainment that you won't hear anywhere else. With the SiriusXM® Platinum Plan 3-month trial,²⁶ you get 425+ channels, including 165+ channels in your vehicle, to enjoy ad-free music, plus sports, news, talk, comedy and more. Experience even more on the SXM® App, featuring a collection of podcasts, Xtra channels of music, personalized Pandora® stations, SiriusXM® video and more.



TOYOTA SAFETY SENSE™ 2.5+ (TSS 2.5+)

Peace of mind comes standard.

Toyota Safety Sense™ 2.5+ (TSS 2.5+)²⁷ is a bundle of active safety features included on many new Toyota vehicles at no additional cost. These innovative features were designed to help protect you and your passengers from harm.



Pre-Collision System with Pedestrian Detection²⁸



Full-Speed Range Dynamic Radar Cruise Control²⁹



Lane Departure Alert with Steering Assist³⁰



Automatic High Beams³¹



Lane Tracing Assist³²



Road Sign Assist³³

VENZA MODELS



LE

Includes these key features

Mechanical/Performance

- ✓ Hybrid engine: 2.5L 4-cylinder with 219 net hp
- ✓ Electronically controlled Continuously Variable Transmission (ECVT) with sequential shift mode
- ✓ Electronic On-Demand All-Wheel Drive (AWD)
- ✓ Normal, Eco, EV³⁴ and Sport drive modes
- ✓ 40 city/37 highway/39 combined EPA-est. mpg⁷

Exterior Features

- ✓ LED projector headlights with dual LED DRL and auto on/off feature
- ✓ LED taillights and stop lights
- ✓ Color-keyed heated power outside mirrors with puddle lights and driver's-side auto-folding controls
- ✓ Multi-layer dark gray front grille with chrome accent
- ✓ 18-in. multi-spoke two-tone machine-finished alloy wheels
- ✓ Height-adjustable hands-free power liftgate with jam protection⁶
- ✓ Black rear spoiler with LED center stop light
- ✓ Dual chrome-tipped exhaust

Interior Features

- ✓ Seating for five
- ✓ Dual zone automatic climate control
- ✓ Qi-compatible wireless smartphone charging³⁵
- ✓ Smart Key System on front doors and liftgate with Push Button Start
- ✓ Fabric-trimmed seats
 - 8-way power-adjustable driver's seat
 - 60/40 split fold-down rear seat
- ✓ Leather-trimmed power tilt/telescopic 3-spoke steering wheel
- ✓ 7-in. Multi-Information Display (MID)
- ✓ Soft-touch dashboard with black piping
- ✓ Center console
- ✓ Silver interior door handles
- ✓ Five USB ports³⁶

Audio Multimedia

- ✓ 8-in. Toyota Audio Multimedia with wireless Apple CarPlay²³ & Android Auto^{TM22} compatibility, SiriusXM²⁶ with 3-month Platinum Plan trial.²⁶ See toyota.com/audio-multimedia for details.
- ✓ 6-speaker Audio
- ✓ Connected Services trials,⁸ including Safety Connect⁹, Service Connect,¹² Remote Connect,²⁰ Wi-Fi Connect¹³ and Drive Connect-capable¹⁶ (subscription required); (4G network dependent)

Safety Features

- ✓ Toyota Safety SenseTM 2.5+ (TSS 2.5+)²⁷
- ✓ Star Safety SystemTM
- ✓ Full-Speed Range Dynamic Radar Cruise Control (DRCC)²⁹
- ✓ Blind Spot Monitor (BSM)³⁷ with Rear Cross-Traffic Alert (RCTA)³⁸
- ✓ Eight airbags³⁹
- ✓ Tire Pressure Monitor System (TPMS)⁴⁰



XLE

Adds to or replaces features offered on LE

Mechanical/Performance

- ✓ Hybrid engine: 2.5L 4-cylinder with 219 net hp
- ✓ 40 city/37 highway/39 combined EPA-est. mpg⁷

Exterior Features

- ✓ LED fog lights
- ✓ Low-profile silver roof rails²
- ✓ 19-in. multi-spoke metallic-finished alloy wheels
- ✓ Color-keyed with gloss-black-accent rear spoiler with full-width LED center stop light

Interior Features

- ✓ Smart Key System on all doors and liftgate with Push Button Start
- ✓ SofTex[®]-trimmed³ seats
 - Heated front seats
- ✓ Soft-touch dashboard with color-keyed piping with metal ends and ambient lighting
- ✓ Center console with ambient lighting and wood-grain-style trim
- ✓ Auto-dimming rearview mirror with HomeLink^{®5} universal transceiver
- ✓ Illuminated door handles and footwells

Audio Multimedia

- ✓ 12.3-in. Toyota Audio Multimedia with wireless Apple CarPlay²³ & Android Auto^{TM22} compatibility, SiriusXM²⁶ with 3-month Platinum Plan trial.²⁶ See toyota.com/audio-multimedia for details.
- ✓ 6-speaker Audio
- ✓ Connected Services trials,⁸ including Safety Connect⁹, Service Connect,¹² Remote Connect,²⁰ Wi-Fi Connect¹³ and Drive Connect with 1-year trial¹⁶ (4G network dependent)

Safety Features

- ✓ Toyota Safety SenseTM 2.5+ (TSS 2.5+)²⁷
- ✓ Star Safety SystemTM
- ✓ Blind Spot Monitor (BSM)³⁷ with Front and Rear Parking Assist with Automatic Braking (PA w/AB)⁴¹

Packages/Options

- ✓ 9-speaker JBL^{®4} Premium Audio system including amplifier and subwoofer



Nightshade Edition

Adds to or replaces features offered on XLE

Mechanical/Performance

- ✓ Hybrid engine: 2.5L 4-cylinder with 219 net hp
- ✓ 40/37/39 combined EPA-est. mpg⁷

Exterior Features

- ✓ Black "VENZA" and grade badge
- ✓ Black rear Toyota emblem
- ✓ 19-in. multi-spoke gloss-black alloy wheels
- ✓ Low-profile black roof rails²
- ✓ Black roof-mounted shark-fin antenna
- ✓ Black outside mirrors and acrylic front grille with smoked chrome accents

Interior Features

- ✓ Smart Key System on all doors and liftgate with Push Button Start
- ✓ SofTex[®]-trimmed³ seats
 - Heated front seats
- ✓ Soft-touch dashboard with color-keyed piping with metal ends and ambient lighting
- ✓ Center console with ambient lighting and wood-grain-style trim
- ✓ Auto-dimming rearview mirror with HomeLink^{®5} universal transceiver
- ✓ Illuminated door handles and footwells

Audio Multimedia

- ✓ 12.3-in. Toyota Audio Multimedia with wireless Apple CarPlay²³ & Android Auto^{TM22} compatibility, SiriusXM²⁶ with 3-month Platinum Plan trial.²⁶ See toyota.com/audio-multimedia for details.
- ✓ 6-speaker Audio
- ✓ Connected Services trials,⁸ including Safety Connect⁹, Service Connect,¹² Remote Connect,²⁰ Wi-Fi Connect¹³ and Drive Connect with 1-year trial¹⁶ (4G network dependent)

Safety Features

- ✓ Toyota Safety SenseTM 2.5+ (TSS 2.5+)²⁷
- ✓ Star Safety SystemTM
- ✓ Blind Spot Monitor (BSM)³⁷ with Front and Rear Parking Assist with Automatic Braking (PA w/AB)⁴¹

Packages/Options

- ✓ Star Gaze[®] fixed panoramic roof²

VENZA MODELS



Limited

Adds to or replaces features offered on XLE

Mechanical/Performance

- ✓ Hybrid engine: 2.5L 4-cylinder with 219 net hp
- ✓ 40 city/37 highway/39 combined EPA-est. mpg⁷

Exterior Features

- ✓ Color-keyed heated power outside mirrors with Venza logo puddle lights and driver's-side auto-folding controls

Interior Features

- ✓ 12.3-in. Multi-Information Display (MID)
- ✓ 10-in. color Head-Up Display (HUD)
- ✓ Perforated SofTex[®]-trimmed³ seats
 - Heated and ventilated front seats
- ✓ Digital rearview mirror with HomeLink^{®5} universal transceiver
- ✓ Panoramic View Monitor (PVM)⁴² with 360-degree Overhead View in low-speed drive and reverse, and Curb View
- ✓ Heated leather-trimmed power tilt/telescopic 3-spoke steering wheel
- ✓ Center stack with Intelligent Touch capacitive controls
- ✓ Rain-sensing variable intermittent windshield wipers

Audio Multimedia

- ✓ 12.3-in. Toyota Audio Multimedia with wireless Apple CarPlay^{®23} & Android Auto^{™22} compatibility, SiriusXM^{®26} with 3-month Platinum Plan trial,²⁶ See toyota.com/audio-multimedia for details.
- ✓ 9-speaker JBL^{®41} Premium Audio system including amplifier and subwoofer
- ✓ Connected Services trials,⁸ including Safety Connect[®],⁹ Service Connect,¹² Remote Connect,²⁰ Wi-Fi Connect¹³ and Drive Connect with 1-year trial¹⁶ (4G network dependent)

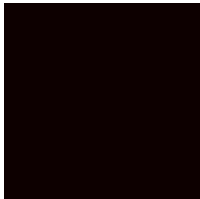
Safety Features

- ✓ Toyota Safety Sense[™] 2.5+ (TSS 2.5+)²⁷
- ✓ Star Safety System[™]

Packages/Options

- ✓ Star Gaze[®] fixed panoramic roof²

VENZA COLORS & TRIMS



Black



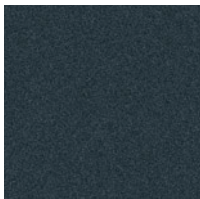
Celestial Black¹



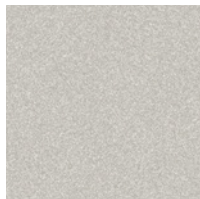
Blueprint



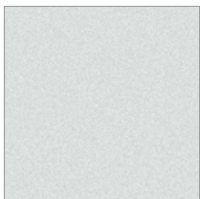
Ruby Flare Pearl¹



Coastal Gray Metallic

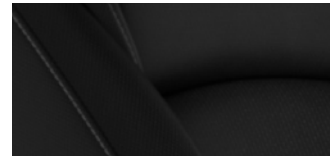


Titanium Glow



Wind Chill Pearl¹

LE fabric shown in Black

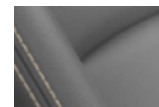


Boulder

XLE SofTex^{®3} trim shown in Black and Java

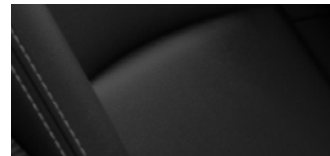


Black

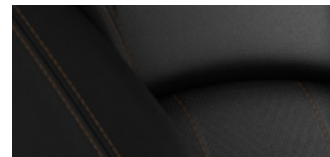


Boulder

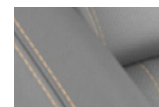
Nightshade SofTex^{®3} trim shown in Black



Limited SofTex^{®3} trim shown in Black and Java



Black



Boulder

VENZA WHEELS



18-in. multi-spoke, two-tone machine-finished alloy wheels



19-in. multi-spoke black alloy wheels



19-in. multi-spoke metallic-finished alloy wheels

VENZA ACCESSORIES

This is a great way to add extra personality to your Venza. Not every accessory is available in your area, so for a complete list of accessories, go to toyota.com/venza/accessories.



Activity mount



All-weather floor liners⁴³



All-weather cargo tray



Owner portfolio



Integrated dashcam⁴⁴



Center console safe



Door edge guard



Roof rack cross bars^{2, 45}



Universal tablet holder⁴⁶

WARRANTIES

Every Toyota Car, Truck and SUV is built to exceptional standards. And that's not idle boasting. We back it up with these Limited Warranty Coverages:

Basic: 36 months/36,000 miles (all components other than normal wear and maintenance items).

Hybrid-Related Component Coverage: Hybrid-related components, including the battery control module, hybrid control module and inverter with converter, are covered for 8 years/100,000 miles. Refer to applicable *Warranty and Maintenance Guide* for details.

Hybrid Battery: HV battery is covered for 10 years or 150,000 miles, whichever comes first. Warranty coverage is subject to terms and conditions. Refer to applicable *Warranty and Maintenance Guide* for details.

Powertrain: 60 months/60,000 miles (engine, transmission/transaxle, drive system, seatbelts and airbags).

Rust-Through: 60 months/unlimited miles (corrosion perforation of sheet metal).

Emissions: Coverages vary under Federal and California regulations. Refer to applicable *Warranty and Maintenance Guide* for details.

Accessories: For Genuine Toyota Accessories purchased at the time of the new vehicle purchase, the Toyota Accessory Warranty coverage is in effect for 36 months/36,000 miles from the vehicle's in-service date, which is the same coverage as the Toyota New Vehicle Limited Warranty.

For Genuine Toyota Accessories purchased after the new vehicle purchase the coverage is 12 months, regardless of mileage, from the date the accessory was installed on the vehicle, or the remainder of any applicable new vehicle warranty, whichever provides greater coverage. Installation labor costs not covered.

You may be eligible for transportation assistance if it's necessary that your vehicle be kept overnight for repairs covered under warranty. Please see your authorized Toyota dealership for further details.

For complete details about Toyota's warranties, please visit www.toyota.com, refer to the applicable *Warranty and Maintenance Guide* or see your Toyota dealer.

VENZA FEATURES⁴⁷

S = Standard O = Optional P = Available as part of a package

Exterior

	LE	XLE	Nightshade Edition	Limited
Aerodynamic underbody panels and integrated rear spoiler; black rocker panels	S	S	S	S
Active grille shutter and aerodynamic side garnish	S	S	S	S
Front and rear tire spats	S	S	S	S
18-in. multi-spoke two-tone machine-finished alloy wheels with 225/60R18 tires	S			
19-in. multi-spoke metallic-finished alloy wheels with 225/55R19 tires		S		S
19-in. multi-spoke gloss-black alloy wheels			S	
Star Gaze [®] fixed panoramic roof ² with on/off controls and power sunshade (removes low-profile roof rails)			O	O
Low-profile silver roof rails ²		S		S
Low-profile black roof rails ²			S	
Black heated power outside mirrors with turn signal and blind spot warning indicators, ³⁷ puddle lights and driver's-side auto-folding controls			S	
Color-keyed heated power outside mirrors with turn signal and blind spot warning indicators, ³⁷ puddle lights and driver's-side auto-folding controls	S	S		
Color-keyed heated power outside mirrors with turn signal and blind spot warning indicators, ³⁷ puddle lights with Venza logo and driver's-side auto-folding controls				S
Multi-layer dark gray front grille with chrome accent	S	S		S
Black acrylic front grille with smoked chrome accents			S	
Dual chrome-tipped exhaust	S	S	S	S
Black front and rear lower bumper garnish	S			
Black front and rear lower bumper garnish with chrome accents		S		S
Black front and rear lower bumper garnish with smoked chrome lower moldings			S	
Black "VENZA" and grade badge			S	
Black rear Toyota emblem			S	
Black outside door handles with touch-sensor lock/unlock feature on all doors and liftgate			S	
Color-keyed outside door handles with touch-sensor lock/unlock feature on front doors and liftgate	S			
Color-keyed outside door handles with touch-sensor lock/unlock feature on all doors and liftgate		S		S
Privacy glass on all rear side, quarter and liftgate windows	S	S	S	S
Height-adjustable, hands-free power liftgate with jam protection ⁶	S	S	S	S
LED projector headlights and Automatic High Beams (AHB) ³¹ with auto on/off feature	S	S	S	S
LED taillights and stop lights	S	S	S	S
Black rear spoiler with LED center stop light	S			
Color-keyed with gloss-black-accent rear spoiler with full-width LED center stop light		S	S	S
Dual LED Daytime Running Lights (DRL) with on/off feature	S	S	S	S
LED fog lights		S	S	S
Washer-linked variable intermittent windshield wipers	S	S	S	
Rain-sensing washer-linked variable intermittent windshield wipers				S
Intermittent rear window wiper	S	S	S	S
Color-keyed roof-mounted shark-fin antenna	S	S		S
Black roof-mounted shark-fin antenna			S	

Interior

Qi-compatible wireless smartphone charging ³⁵ with charge indicator light	S	S	S	S
12.3-in. color LCD Multi-Information Display (MID) with customizable settings, odometer, tripmeters, clock, outside temperature, rear passenger seatbelt indicators, hybrid energy monitor, fuel economy information, trip timer, shift-position, TPMS, ⁴⁰ scheduled maintenance indicators, and warning messages				S
Analog speedometer, hybrid power meter, coolant temperature and fuel gauges; 7-in. color LCD Multi-Information Display (MID) with customizable settings, odometer, tripmeters, clock, outside temperature, rear passenger seatbelt indicators, hybrid energy monitor, fuel economy information, trip timer, shift-position, TPMS, ⁴⁰ scheduled maintenance indicators, and warning messages	S	S	S	
10-in. color Head-Up Display (HUD) with speedometer, Lane Departure ³⁰ and Hybrid System Indicator				S
Five USB ports: ³⁶ one data port (front) and four USB charge ports (two 1.5 AMP front; two 2.1 AMP rear)	S	S	S	S
Day/night rearview mirror	S			
Auto-dimming rearview mirror with HomeLink ^{®5} universal transceiver		S	S	
Digital rearview mirror with HomeLink ^{®5} universal transceiver				S
Integrated backup camera ⁴⁸ with projected path and dynamic gridlines	S	S	S	
Integrated backup camera ⁴⁸ with projected path, backup camera washer and dynamic gridlines				S
Panoramic View Monitor (PVM) ⁴² with 360-degree Overhead View in low-speed drive and reverse, and Curb View				S
LED front maplights and overhead/rear cargo dome light	S	S	S	S
Front driver and passenger doorsills and illuminated footwells		S	S	
Front driver and passenger illuminated doorsills and footwells				S

VENZA FEATURES⁴⁷

S = Standard O = Optional P = Available as part of a package

Interior (continued)

	LE	XLE	Nightshade Edition	Limited
Leather-trimmed power tilt/telescopic 3-spoke steering wheel with silver accent and controls for audio, Multi-Information Display (MID), Bluetooth ^{®49} hands-free phone, voice-command, Dynamic Radar Cruise Control (DRCC), ²⁹ Lane Departure Alert (LDA) ³⁰ and Lane Tracing Assist (LTA) ³²	S			
Leather-trimmed power tilt/telescopic 3-spoke steering wheel with chrome accent, memory function and controls for audio, Multi-Information Display (MID), Bluetooth ^{®49} hands-free phone, voice-command, Dynamic Radar Cruise Control (DRCC), ²⁹ Lane Departure Alert (LDA), ³⁰ and Lane Tracing Assist (LTA) ³²		S	S	
Heated leather-trimmed power tilt/telescopic 3-spoke steering wheel with chrome accent, memory function and controls for audio, Multi-Information Display (MID), Bluetooth ^{®49} hands-free phone, voice-command, Dynamic Radar Cruise Control (DRCC), ²⁹ Lane Departure Alert (LDA), ³⁰ and Lane Tracing Assist (LTA) ³²				S
Turn signal stalk with headlight controls and one-touch 3-blink lane change turn signals	S	S	S	S
Wiper control stalk with front and rear window wiper controls	S	S	S	S
Overhead console with LED maplights, passenger airbag ³⁹ on/off indicators and Safety Connect ^{®9} button	S	S	S	S
Overhead console with Star Gaze [®] fixed panoramic roof ² on/off controls and power sunshade controls, LED maplights, passenger airbag ³⁹ on/off indicators and Safety Connect ^{®9} button			O	O
Electric Parking Brake ⁵⁰ with Brake Hold ⁵¹	S	S	S	S
Dual zone automatic climate control system with dust and pollen filter and rear-seat vents, featuring push-button/dial controls	S			
Dual zone automatic climate control system with dust and pollen filter and rear-seat vents, featuring Intelligent Touch capacitive controls		S	S	S
Rear liftgate window defogger	S	S	S	S
Fabric-trimmed seats; 8-way power-adjustable driver's seat with power lumbar support; driver and front passenger seatback pockets	S			
SofTex [®] -trimmed ³ seats; heated front seats; 8-way power-adjustable driver's seat with memory function and power lumbar support; driver and front passenger seatback pockets		S	S	
Perforated SofTex [®] -trimmed ³ seats; heated and ventilated front seats; 8-way power-adjustable driver's seat with memory function and power lumbar support; 8-way power-adjustable front passenger seat; driver and front passenger seatback pockets				S
Soft-touch dashboard with black piping	S			
Soft-touch dashboard with color-keyed piping with metal ends and ambient lighting		S	S	S
Center stack with push-button/dial climate controls	S			
Center stack with Intelligent Touch capacitive controls		S	S	S
Black soft-touch armrests	S			
Soft-touch armrests with wood-grain-style trim		S	S	S
Carpet flooring with driver footrest	S	S	S	S
3-passenger rear seating with 60/40 split fold-flat seat with center armrest and cup holders	S	S	S	S
Center console with ambient lighting, Push Button Start, drive mode switch, Electric Parking Brake, ⁵⁰ automatic Brake Hold ⁵¹ controls and covered storage compartment with 12V/120W input, ⁵² removable utility tray and sliding cover	S			
Center console with ambient lighting and wood-grain-style trim, Push Button Start, drive mode switch, Electric Parking Brake, ⁵⁰ automatic Brake Hold ⁵¹ controls, heated front-seat controls and covered storage compartment with 12V/120W input, ⁵² removable utility tray and sliding cover		S	S	
Center console with ambient lighting and wood-grain-style trim, Push Button Start, drive mode switch, Electric Parking Brake, ⁵⁰ automatic Brake Hold ⁵¹ controls, heated and ventilated front-seat controls and covered storage compartment with 12V/120W input, ⁵² removable utility tray and sliding cover				S
Passenger-side glove compartment	S	S	S	S
Leather-trimmed shift lever with sequential mode	S	S	S	S
Eight total cup and bottle holders: four cup holders and four bottle holders	S	S	S	S
Power windows with auto up/down and jam protection in all positions	S	S	S	S
Smart Key System on front doors and liftgate with Push Button Start, remote keyless entry system with lock/unlock, panic and remote illuminated entry	S			
Smart Key System on all doors and liftgate with Push Button Start, remote keyless entry system with lock/unlock, panic and remote illuminated entry		S	S	S
Power door locks with shift-linked automatic lock/unlock feature	S	S	S	S
Silver interior door handles	S	S	S	S
Sun visors with sliding extensions and illuminated vanity mirrors	S	S	S	S
Rear fold-down center armrest with two cup holders	S	S	S	S
Three black scuff plates with nylon deck board strap in cargo area	S			
Three silver scuff plates with leather deck board strap in cargo area		S	S	S
Cargo area tonneau cover	S	S	S	S

VENZA FEATURES⁴⁷

S = Standard O = Optional P = Available as part of a package

Audio Multimedia

	LE	XLE	Nightshade Edition	Limited
8-in. Toyota Audio Multimedia with wireless Apple CarPlay ²³ & Android Auto ²² compatibility, SiriusXM ²⁶ with 3-month Platinum Plan trial subscription. ²⁶ See toyota.com/audio-multimedia for details.	S			
12.3-in. Toyota Audio Multimedia with wireless Apple CarPlay ²³ & Android Auto ²² compatibility, SiriusXM ²⁶ with 3-month Platinum Plan trial subscription. ²⁶ See toyota.com/audio-multimedia for details.		S	S	S
6-speaker Audio	S	S	S	
9-speaker JBL ⁸⁴ Premium Audio system with subwoofer and amplifier		O		S

Connected Services

Drive Connect with 1-year trial ¹⁶ — includes Cloud Navigation ¹⁹ with Google Points-of-Interest (POI) data, Intelligent Assistant ¹⁸ with Hey, Toyota, and Destination Assist. ¹⁷ Subscription required. 4G network dependent.		S	S	S
Safety Connect ⁸ with up to 10-year trial ⁹ — includes Emergency Assistance, Stolen Vehicle Locator, ¹¹ Roadside Assistance ¹⁰ and Automatic Collision Notification. Trial subscription is included at no additional cost. 4G network dependent.	S	S	S	S
Service Connect with up to 10-year trial ¹² — receive personalized maintenance updates and vehicle health reports. Subscription required. 4G network dependent	S	S	S	S
Remote Connect with 1-year trial ²⁰ — remotely interact with your vehicle through the Toyota app ⁵³ via your smartwatch. Depending on grade, allows you to lock/unlock doors, start and stop the vehicle, locate your last parked location, check vehicle status and monitor guest drivers. Subscription required after trial. 4G network dependent.		S	S	S
Wi-Fi Connect with 30-day or up to 3 GB trial ¹³ — with AT&T Wi-Fi hotspot and Integrated Streaming (Apple Music ¹⁴ and Amazon Music ¹⁵) compatibility. Subscription required. 4G network dependent.	S	S	S	S

Safety and Convenience

Toyota Safety Sense™ 2.5+ (TSS 2.5+) ²⁷ — Pre-Collision System with Pedestrian Detection (PCS w/PD), ²⁸ Lane Departure Alert with Steering Assist (LDA w/SA), ³⁰ Lane Tracing Assist (LTA), ³² Automatic High Beams (AHB), ³¹ Full-Speed Range Dynamic Radar Cruise Control (DRCC), ²⁹ and Road Sign Assist (RSA) ³³	S	S	S	S
 Star Safety System™ — includes Enhanced Vehicle Stability Control (VSC), ⁵⁴ Traction Control (TRAC), Anti-lock Brake System (ABS), Electronic Brake-force Distribution (EBD), Brake Assist (BA) ⁵⁵ and Smart Stop Technology® (SST) ⁵⁶	S	S	S	S
Eight airbags ³⁹ — includes driver and front passenger Advanced Airbag System, driver and front passenger seat-mounted side airbags, driver knee airbag, front passenger seat cushion airbag, and front and rear side curtain airbags	S	S	S	S
3-point seatbelts for all seating positions; driver-side Emergency Locking Retractor (ELR) and Automatic Locking Retractor (ALR/ELR) on all passenger seatbelts	S	S	S	S
Adjustable front seatbelt shoulder anchors	S	S	S	S
Front seatbelts with seatbelt pretensioners with force limiters	S	S	S	S
LATCH (Lower Anchors and Tethers for CHILDren) includes lower anchors on outboard rear seats and tether anchors on all rear seats	S	S	S	S
Child-protector rear door locks	S	S	S	S
Front and rear side-impact door beams	S	S	S	S
Tire Pressure Monitor System (TPMS) ⁴⁰	S	S	S	S
Safety Connect ^{8,9} — includes Emergency Assistance, Stolen Vehicle Locator, ¹¹ Roadside Assistance ¹⁰ and Automatic Collision Notification. Available by subscription. Up to 10-year trial subscription. 4G network dependent.	S	S	S	S
Blind Spot Monitor (BSM) ³⁷ with Rear Cross-Traffic Alert (RCTA) ³⁸	S	S	S	S
Front and Rear Parking Assist with Automatic Braking (PA w/AB) ⁴¹		S	S	S
Hill Start Assist Control (HAC) ⁵⁷	S	S	S	S
Audible Vehicle Proximity Notification System (VPNS) ⁵⁸	S	S	S	S
Anti-theft system with engine immobilizer ⁵⁹ and alarm	S	S	S	S

Packages and Options

Star Gaze® fixed panoramic roof ² — electrochromic fixed panoramic glass roof with on/off control and power sunshade (removes low-profile roof rails)			O	O
9-speaker JBL ⁸⁴ Premium Audio system with amplifier and subwoofer		O		S

VENZA SPECIFICATIONS

S = Standard O = Optional P = Available as part of a package

Mechanical/Performance

	LE	XLE	Nightshade Edition	Limited
ENGINE				
2.5-Liter Dynamic Force 4-Cylinder Engine with DOHC 16-Valve with D-4S Dual-Injection and Dual Variable Valve Timing with intelligence (VVT-i)	S	S	S	S
POWERTRAIN				
219 combined net hp — includes internal combustion engine with 176 hp and electric motor powertrain system	S	S	S	S
COMPRESSION RATIO				
	14.0:1	14.0:1	14.0:1	14.0:1
INDUCTION SYSTEM				
D-4S Dual-Injection (Direct-Injection and Port-Injection) EFI with Electronic Throttle Control System with intelligence (ETCS-i)	S	S	S	S
EMISSION RATING				
Super Ultra Low Emission Vehicle (SULEV) ⁶⁰	S	S	S	S
ELECTRIC MOTOR GENERATORS				
Power output, front/rear	118/54 hp (88/40 kW)	118/54 hp (88/40 kW)	118/54 hp (88/40 kW)	118/54 hp (88/40 kW)
Electric motor voltage	650V (max sys.)	650V (max sys.)	650V (max sys.)	650V (max sys.)
TRACTION BATTERY				
Lithium-ion battery	S	S	S	S
Voltage	252V	252V	252V	252V
TRANSMISSION				
Electronically controlled Continuously Variable Transmission (ECVT) with sequential shift mode	S	S	S	S
DRIVETRAIN				
Electronic On-Demand All-Wheel Drive (AWD)	S	S	S	S
CAPABILITY				
Hill Start Assist Control (HAC) ⁵⁷	S	S	S	S
Active Cornering Assist (ACA)	S	S	S	S
Ground clearance (in.)	8.2	8.2	8.2	8.2
Approach/departure angle (degrees)	18.1/21.8	18.4/21.9	18.4/21.9	18.4/21.9
AWD MONITOR				
All-Wheel Drive Integrated Management (AIM) with Multi-Information Display (MID) and touchscreen monitor	S	S	S	S
DRIVE MODE				
Drive mode switch with Sport, Eco and Normal Modes, and EV Mode ³⁴ button	S	S	S	S
BODY CONSTRUCTION				
Reinforced unitized steel body	S	S	S	S
SUSPENSION				
Independent MacPherson strut front suspension with stabilizer bar; multi-link rear suspension with stabilizer bar	S	S	S	S
STEERING				
Electric Power Steering (EPS); electric power-assisted rack-and-pinion	S	S	S	S
Steering wheel turns (lock-to-lock)	2.8	2.6	2.6	2.6
Steering ratio	14.3:1	14.4:1	14.4:1	14.4:1
Turning circle diameter, curb-to-curb (ft.)	36.1	37.4	37.4	37.4
BRAKES				
Electronically Controlled Braking (ECB) system with integrated regenerative braking	S	S	S	S
Front diameter (in.)	12.0	12.0	12.0	12.0
Rear diameter (in.)	11.1	11.1	11.1	11.1

VENZA SPECIFICATIONS

S = Standard O = Optional P = Available as part of a package

Dimensions

	LE	XLE	Nightshade Edition	Limited
EXTERIOR (in.)				
Overall height (with antenna)	65.9	65.9	65.9	65.9
Overall length	186.6	186.6	186.6	186.6
Overall width	73.0	73.0	73.0	73.0
Track (front/rear)	63.0/63.8	63.0/63.8	63.0/63.8	63.0/63.8
Wheelbase	105.9	105.9	105.9	105.9
Head room, front/rear (with Star Gaze® fixed panoramic roof ²)	38.6/39.0 (N/A)	38.6/39.0 (N/A)	38.6/39.0 (38.1/36.9)	38.6/39.0 (38.1/36.9)
Hip room (front/rear)	54.4/45.2	54.4/45.2	54.4/45.2	54.4/45.2
Leg room (front/rear)	40.9/37.8	40.9/37.8	40.9/37.8	40.9/37.8
Shoulder room (front/rear)	57.4/56.9	57.4/56.9	57.4/56.9	57.4/56.9
Length behind rear seat (in.)	39.2	39.2	39.2	39.2
Minimum/maximum width (in.)	39.7/49.8	39.7/49.8	39.7/49.8	39.7/49.8
Minimum/maximum height (in.)	27.6	27.6	27.6	27.6

Weights and Capacities

Manufacturer-estimated interior volume (cu. ft.) (with Star Gaze® fixed panoramic roof ²)	127.1	127.1	127.1 (123.8)	127.1 (123.8)
Manufacturer-estimated passenger volume (cu. ft.) (with Star Gaze® fixed panoramic roof ²)	98.3	98.3	98.3 (95.2)	98.3 (95.2)
Cargo volume (cu. ft.) ⁶¹ behind front/rear seat, estimated (with Star Gaze® fixed panoramic roof ²)	55.1/28.8	55.1/28.8	55.1/28.8 (54.9/28.7)	55.1/28.8 (54.9/28.7)
Curb weight (lb.)	3847	3891	3891	3913
Fuel tank (gal.)	14.5	14.5	14.5	14.5
Gross Vehicle Weight Rating (GVWR) (lb.)	4920	4920	4920	4920
Seating capacity	5	5	5	5

Tires

All-season radials	S	S	S	S
Temporary	S	S	S	S

Mileage Estimates (mpg city/highway/combined)⁷

40/37/39	40/37/39	40/37/39	40/37/39
----------	----------	----------	----------

DISCLOSURES

1. Extra-cost color. 2. When Star Gaze® fixed panoramic roof option is added, roof rails are removed. 3. SofTex® is a registered trademark of Toyota Motor Sales, U.S.A., Inc. 4. JBL® is a registered trademark of Harman International Industries, Inc. 5. HomeLink® and the HomeLink® house icon are registered trademarks of Gentex Corporation. 6. Water, weather, dirt, and other conditions also may cause the sensor to not operate properly or to operate unintentionally. See *Owner's Manual* for limitations. 7. EPA-estimated 40 city/37 hwy/39 combined mpg rating for 2024 Venza. Use for comparison purposes only. Your mileage will vary for many reasons, including your vehicle's condition and how/where you drive. See www.fueleconomy.gov. 8. Toyota Connected Services depend on certain factors outside of Toyota's control in order to operate, including cellular network availability and GPS signal. Without either of these things, operability may be limited or precluded, including access to response center and emergency support. Services vary by vehicle and are subject to change at any time without notice. Requires app download/registration and subscription after trial (if applicable). Terms of Use apply. Data charges may apply. See *Owner's Manual* and <https://www.toyota.com/connected-services/>. For Toyota's Connected Services' data collection, use, sharing and retention practices, please visit <https://www.toyota.com/support/privacy-notice/>. All trials begin on original purchase or lease date of new vehicle, with the exception of Wi-Fi, for which trial begins at time of activation. Paid subscription required after trial (if applicable). 9. Safety Connect® depends on factors outside of Toyota's control in order to operate, including cellular network availability and GPS signal. Without either of these things, operability may be limited or precluded, including access to response center and emergency support. Stolen vehicle police report required to use Stolen Vehicle Locator. If subscription includes Automatic Collision Notification, it will activate only in limited circumstances. Services vary by vehicle and are subject to change at any time without notice. Terms of Use apply. Data charges may apply. See *Owner's Manual* and <https://www.toyota.com/connected-services/>. For Toyota's Connected Services' data collection, use, sharing and retention practices, please visit <https://www.toyota.com/support/privacy-notice/>. A Safety Connect® trial is included for up to 10 years on select vehicles with paid Connected Services packages. See your Toyota dealer for details. 4G network dependent. 10. Requires cellular network availability, a cellular connection and GPS signal. May not work in all areas. Service may vary by vehicle and region. See Toyota dealer for details and exclusions. 11. Building and/or parking structures may limit system effectiveness. Stolen vehicle police report required to use Stolen Vehicle Locator. For additional assistance contact the Toyota Brand Engagement Center at 1-800-331-4331. 12. Service Connect depends on certain factors outside of Toyota's control in order to operate, including cellular network availability and GPS signal. Without either of these things, operability may be limited or precluded. Information provided is based on the last time data was collected from vehicle and is not real-time data. Services vary by vehicle and are subject to change at any time without notice. Terms of Use apply. Data charges may apply. See usage precautions and service limitations in *Owner's Manual* and <https://www.toyota.com/connected-services/>. To learn about Toyota's Connected Services' data collection, use, sharing and retention practices, please visit <https://www.toyota.com/support/privacy-notice/>. The Service Connect trial is included for up to 10 years. 4G network dependent. 13. Service not available everywhere or in every vehicle. Depends on cellular network availability and GPS signal. Without either of these things, operability may be limited or precluded. Up to 5 devices can be supported using in-vehicle connectivity. Services subject to change at any time without notice. The Wi-Fi Connect trial begins at the time of enrollment and expires the earlier of 3GB data use or the 1-month trial period ends. Paid subscription required after trial. Select models include Integrated Streaming capability, which requires a separate subscription to third-party provider services. Data charges may apply. Valid in the contiguous U.S. and Alaska. Go to <https://myvehicle.att.com/#/toyota/learn?language=en&country=US> for terms and conditions. The Wi-Fi Connect trial begins at the time of enrollment and expires when 30 days or the earlier of 3GB of data is used or the 1-month period ends. Subscription required after trial. Integrated Streaming requires separate subscriptions to third-party provider services. Terms of Use apply. 14. Apple Music and the Apple logo are trademarks of Apple Inc., registered in the U.S. and other countries. Requires Wi-Fi Connect subscription after trial (if applicable) and your own Apple Music account. 15. Amazon, Amazon Music, and related marks are trademarks of Amazon.com, Inc., or its affiliates. 16. Drive Connect availability and accuracy depend on certain factors outside of Toyota's control in order to operate, including 4G network availability, a cellular connection and GPS signal. Without any one or more of these things, operability may be limited or precluded. Services subject to change at any time without notice. Requires app download/registration and subscription after trial (if applicable). Terms of Use apply. Data charges may apply. See *Owner's Manual* and <https://www.toyota.com/connected-services/>. To learn about Toyota's Connected Services data collection, use, sharing and retention practices, visit <https://www.toyota.com/support/privacy-notice/>. Trial period begins on original purchase or lease date of new vehicle. Paid subscription required after trial (if applicable). Terms of Use apply. 17. On select models, Destination Assist will require a trial or subscription to Drive Connect. Availability and accuracy depend on certain factors outside of Toyota's control in order to operate, including a cellular connection and GPS signal. Without either of these, operability may be limited or precluded. Services subject to change at any time without notice. Requires app download/registration and subscription to Drive Connect after trial (if applicable). Terms of Use apply. Data charges may apply. See *Owner's Manual* and <https://www.toyota.com/connected-services/> for limitations. To learn about Toyota's Connected Services data collection, use, sharing and retention practices, visit <https://www.toyota.com/support/privacy-notice/>. The Destination Assist trial period begins on original purchase or lease date of new vehicle. Paid subscription required after trial (if applicable). Terms of Use apply. 18. Intelligent Assistant requires a trial or subscription to Drive Connect. Drive Connect availability and accuracy depend on certain factors outside of Toyota's control in order to operate, including 4G network availability, a cellular connection and GPS signal. Without any one or more of these things, operability may be limited or precluded. Services subject to change at any time without notice. Requires app download/registration and subscription after trial (if applicable). Terms of Use apply. Data charges may apply. See *Owner's Manual* and <https://www.toyota.com/connected-services/> for limitations. To learn about Toyota's Connected Services data collection, use, sharing and retention practices, please visit <https://www.toyota.com/support/privacy-notice/>. 19. Cloud Navigation requires a trial or subscription to Drive Connect. Drive Connect availability and accuracy depend on certain factors outside of Toyota's control in order to operate, including 4G network availability, a cellular connection and GPS signal. Without any one or more of these things, operability may be limited or precluded. Services subject to change at any time without notice. Requires app download/registration and subscription after trial (if applicable). Terms of Use apply. Data charges may apply. See *Owner's Manual* and <https://www.toyota.com/connected-services/> for limitations. To learn about Toyota's Connected Services data collection, use, sharing and retention practices, please visit <https://www.toyota.com/support/privacy-notice/>. 20. Use only if aware of circumstances surrounding vehicle and it is legal and safe to do so (e.g., do not remotely start a gas engine vehicle in an enclosed space or if vehicle is occupied by a child). Remote Connect depends on certain factors outside of Toyota's control in order to operate, including 4G network availability, a cellular connection and GPS signal. Without any one or more of these things, operability may be limited or precluded. Services subject to change at any time without notice. Digital Key also requires Bluetooth® connectivity. Remote start/stop not available on manual transmission-equipped models. Remote start/stop and/or lock/unlock available on select models. Remote Connect is included with select paid Connected Services packages. See your Toyota dealer for details. Terms of Use apply. Data charges may apply. See *Owner's Manual* and <https://www.toyota.com/connected-services/> for additional details. To learn about Toyota's Connected Services' data collection, use, sharing and retention practices, please visit <https://www.toyota.com/support/privacy-notice/>. Trial period begins on original purchase or lease date of new vehicle. Paid subscription required after trial (if applicable). Terms of Use apply. 21. Google, Android, Android Auto, YouTube Music and other marks are trademarks of Google LLC. 22. Wireless use of Android Auto requires a compatible Android 11.0+ phone and compatible active data plan. Check g.co/androidauto/requirements for compatibility. Operability depends on network availability, a cellular connection and GPS signal. Services subject to change at any time without notice. Data charges may apply. To learn more, go to <https://www.toyota.com/audio-multimedia/>. To learn more about Toyota's Connected Services data collection, use, sharing and retention practices, please visit <https://www.toyota.com/support/privacy-notice/>. 23. Apps and services are subject to change at any time without notice. Data charges may apply. Apple CarPlay® functionality requires a compatible iPhone® connected wirelessly to the vehicle. Apple CarPlay® is a registered trademark of Apple Inc. 24. iPhone® is a registered trademark of Apple Inc. All rights reserved. 25. Always focus on the road while driving. Siri® is available on select iPhone®/iPad® models and requires Internet access. Siri® is not available in all languages or all areas and features vary by area. Some Siri® functionality and commands are not accessible in the vehicle. See apple.com and phone carrier for details. Data charges may apply. Siri® is a registered trademark of Apple Inc. 26. Trial length and service availability may vary by model, model year or trim. Service will automatically stop at the end of your trial subscription period unless you decide to continue service. If you do not wish to enjoy your trial, you can cancel by calling the number below. All SiriusXM services require a subscription, each sold separately by SiriusXM after the trial period. **Service subject to the SiriusXM Customer Agreement and Privacy Policy; visit www.siriusxm.com to see complete terms and how to cancel which includes calling 1-866-635-23 49.** Some services and features are subject to device capabilities and location availability. All fees, content and features are subject to change. SiriusXM, Pandora and all related logos are trademarks of Sirius XM Radio Inc. and its respective subsidiaries. 27. Toyota Safety Sense™ effectiveness is dependent on many factors including road, weather and vehicle conditions. Drivers are responsible for their own safe driving. Always pay attention to your surroundings and drive safely. See *Owner's Manual* for limitations. 28. The Pre-Collision System (PCS) with Pedestrian Detection (PD) is designed to determine if impact is imminent and help reduce impact speed and damage in certain frontal collisions involving a vehicle, a pedestrian or a bicyclist. PCS w/PD is not a substitute for safe and attentive driving. System effectiveness depends on many factors, such as speed, size and position of pedestrian or bicyclist and weather, light and road conditions. See *Owner's Manual* for limitations. 29. Full-Speed Range Dynamic Radar Cruise Control is not a substitute for safe and attentive driving. See *Owner's Manual* for instructions and limitations. 30. Lane Departure Alert with Steering Assist is designed to read visible lane markers under certain conditions. It provides a visual/audible alert and slight steering force when lane departure is detected. It is not a collision-avoidance system or a substitute for safe and attentive driving. Effectiveness depends on many factors including road, weather and vehicle conditions. See *Owner's Manual* for limitations. 31. Automatic High Beams operate at speeds above 21 mph. See *Owner's Manual* for instruction and limitations. 32. The Lane Tracing Assist (LTA) lane centering function is designed to read visible lane markers and detect other vehicles under certain conditions. It is only operational when DRCC is engaged. See *Owner's Manual* for limitations. 33. Road Sign Assist only recognizes certain road signs. See *Owner's Manual* for limitations. 34. EV Mode lets you operate solely on battery power at low speeds for short distances and in limited circumstances, such as in a parking garage. Different conditions may prevent or limit usage. See your *Owner's Manual* for instructions and limitations. 35. Charging may not be compatible with all mobile phones, smart devices, tablets, e-readers, MP3/WMA players and like products. 36. May not be compatible with all mobile phones, smart devices, tablets, e-readers, MP3/WMA players and like models. 37. Do not rely exclusively on Blind Spot Monitor. Look over shoulder and use turn signal. See *Owner's Manual* for limitations. 38. Do not rely exclusively on the Rear Cross-Traffic Alert. Visually confirm clearance during use. See *Owner's Manual* for limitations. 39. Airbag systems supplement the seatbelts and are designed to inflate only under certain conditions and in certain types of severe collisions. Always wear seatbelt, sit upright in middle and as far back in seat as possible to help decrease risk of injury. Do not put objects in front of an airbag. See *Owner's Manual* for limitations. 40. The Tire Pressure Monitor System alerts the driver when tire pressure is critically low. For optimal tire wear and performance, tire pressure should be checked regularly with a gauge; do not rely solely on the monitor system. See *Owner's Manual* for limitations and details. 41. Front and Rear Parking Assist with Automatic Braking (PA w/AB) may warn drivers of, and potentially brake for front and rear collisions with certain objects when traveling at low speeds. Drivers should visually confirm clearance during use. See *Owner's Manual* for instructions and limitations. 42. The Panoramic View Monitor does not provide a comprehensive view of the area surrounding your vehicle. Look around to confirm clearance. See *Owner's Manual* for limitations. 43. This floor mat/floor liner was designed specifically for use in your model and model year vehicle and SHOULD NOT be used in any other vehicle.

DISCLOSURES

To avoid potential interference with pedal operation, each mat/liner must be secured with its fasteners. Do not install a floor mat/floor liner on top of an existing floor mat/floor liner. **44.** Dashcam may not record under certain conditions. Use in accordance with applicable laws. See dashcam *Owner's Manual* for details. **45.** Do not overload vehicle and properly secure roof load. See *Owner's Manual* for weight limits and restrictions. **46.** The universal tablet holder is intended for passengers only. Drivers should always be sure to obey traffic regulations and maintain awareness of the road and traffic conditions at all times. Use of aftermarket accessories may pose an increased risk of injury to occupants in the event of an accident. Tablet sold separately. **47.** Toyota strives to build vehicles to match customer interest and thus they typically are built with popular options and option packages. Not all options/packages are available separately and some may not be available in all regions of the country. See toyota.com for information about options/packages commonly available in your area. If you would prefer a vehicle without any or with different options, contact your dealer to check for current availability or the possibility of placing a special order. Color(s) depicted may vary based on multiple factors, including ambient lighting and the format in which it is being viewed (e.g., computer, mobile device or print). **48.** The backup camera does not provide a comprehensive view. Always look over shoulder and use outside mirrors. See *Owner's Manual* for limitations. **49.** A compatible Bluetooth®-enabled phone must first be paired. Phone performance depends on software, coverage and carrier. The Bluetooth® word mark and logos are registered trademarks of Bluetooth SIG, Inc. Use of such marks by Toyota is under license. **50.** When the system is on, Electric Parking Brake is designed to engage the Parking Brake under limited conditions. It may not hold the vehicle under all conditions. See *Owner's Manual* for additional limitations and details. **51.** When the system is on and the vehicle is in Drive, Brake Hold may temporarily keep the brakes engaged after the driver brings the vehicle to a complete stop. See *Owner's Manual* for limitations. **52.** Rated for 12 volts/10 amps. See *Owner's Manual* for additional limitations and details. **53.** An active Remote Connect trial or subscription is required to use the features mentioned in the Toyota app. **54.** Vehicle Stability Control is not a substitute for safe and attentive driving practices. Factors including speed, road conditions, weather and steering input can affect whether VSC will be effective. See *Owner's Manual* for limitations. **55.** Brake Assist is designed to help the driver take advantage of ABS and is not a substitute for safe driving practices. Braking effectiveness also depends on proper vehicle maintenance, tire and road conditions. See *Owner's Manual* for additional limitations and details. **56.** Smart Stop Technology® will reduce power to help the brakes bring vehicle to a stop during certain contemporaneous brake and accelerator pedal applications. See *Owner's Manual* for limitations. **57.** Hill Start Assist Control is designed to minimize backward rolling on steep ascents. Not a substitute for safe driving judgment and practices. Speed, grade, surface conditions, driver input, etc., can all affect HAC function. See *Owner's Manual*. **58.** When Vehicle Proximity Notification System is active, it is the driver's responsibility to maintain a lookout for pedestrians, cyclists, other cars and objects and to drive the vehicle in a safe and attentive manner to avoid making contact. **59.** The engine immobilizer is a state-of-the-art anti-theft system initiated when the key is inserted into ignition switch or a Smart Key fob is in/near the vehicle. Engine will only start if the code in the transponder chip inside the key/fob matches the code in vehicle's immobilizer. The transponder chip is embedded in the key/fob and can be costly to replace. For lost key or fob, see a Toyota dealer or go to www.aloa.org to find a qualified locksmith for high-security key service. **60.** Meets Tier-2/Bin-3 Federal emissions standard. **61.** Cargo and load capacity limited by weight and distribution. Always properly secure cargo and cargo area. **62.** 2024 Venza vs. 2023 and 2024 competitors. Information from manufacturers' websites as of 10/11/23. Excludes electric vehicles. EPA-estimated 40 city/37 hwy/39 combined mpg for 2024 Venza AWD models. Use for comparison purposes only. Your mileage will vary for many reasons, including your vehicle's condition and how/where you drive. See www.fueleconomy.gov.

Toyota strives to build vehicles to match customer interest and thus they typically are built with popular options and option packages. Not all options/packages are available separately and some may not be available in all regions of the country. See toyota.com for information about options/packages commonly available in your area. If you would prefer a vehicle without any or with different options, contact your dealer to check for current availability or the possibility of placing a special order.

Color(s) depicted may vary based on multiple factors, including ambient lighting and the format in which it is being viewed (e.g., computer, mobile device or print).

Some vehicles are shown with available equipment. Seatbelts should be worn at all times. For details on vehicle specifications, standard features and available equipment in your area, contact your Toyota dealer. A vehicle with particular equipment may not be available at the dealership. Ask your Toyota dealer to help locate a specifically equipped vehicle.

All information presented herein is based on data available at the time of posting, is subject to change without notice and pertains specifically to mainland U.S.A. vehicles only. Vehicles shown may be prototypes, shown using visual effects and/or shown with options. Actual models may vary.



Mobility

For Toyota Mobility program details, go to www.toyota.com/mobility or call the Toyota Brand Engagement Center at 1-800-331-4331