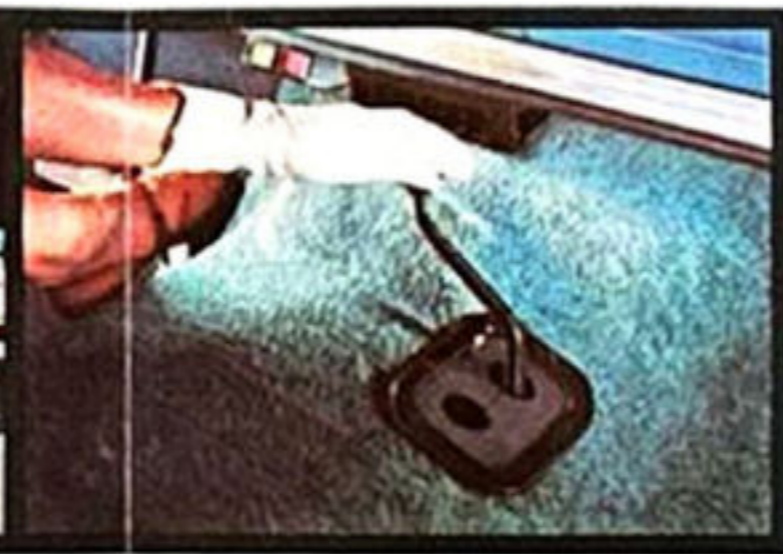
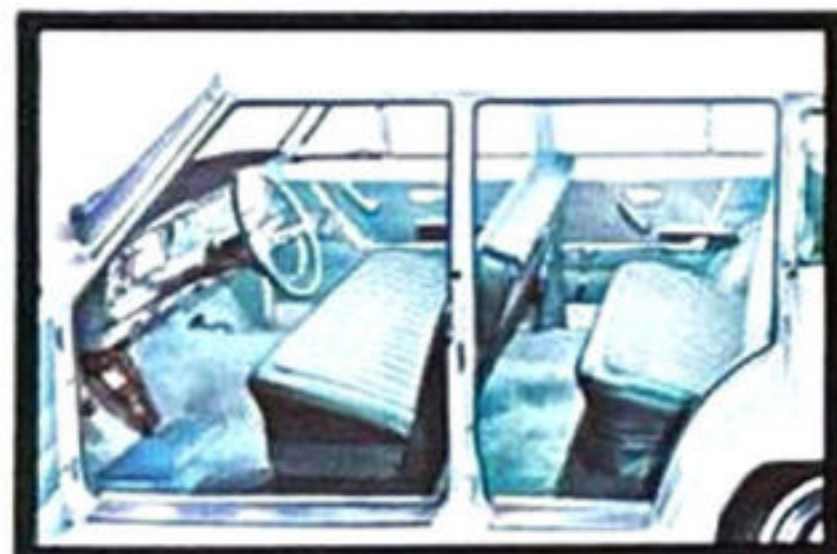


Jeep VEHICLES





WAGONEER STATION WAGON

The good news for 4-wheel drive buffs is the 'Jeep' Wagoneer's good looks . . . outside and inside. Outside: lively looks with a fresh approach to functional styling . . . plus modern, high-luster colors that stay bright with a minimum of care. Luxury and a smart appearance are also the styles inside the Custom Wagoneer — thanks to its nylon-vinyl upholstery and trim, foam seat cushions, carpeting and instrument panel with chrome control knobs.

The largest tailgate opening and the biggest cargo area of any wagon in its wheelbase class! You can pile in over 91 cubic feet of cargo in the Wagoneer's loadspace. Long seven foot ladders lie flat on the floor . . . tall 3½ foot shrubs fit nicely without marring the headlining. The Wagoneer even makes loading and unloading easier because it's lower from ground to tailgate than any other 4-wheel drive wagon.

The Wagoneer's improved steering system and optional full-time power steering make maneuvering in traffic — or around tree stumps — almost effortless. Yet, the Wagoneer combines all this with the hefty feel of larger, more expensive wagons — which means you can take sharp curves or just go cruising along the highway with the assurance of a safe, solid, secure ride.

You get twice the traction of ordinary wagons with the 4-wheel drive Wagoneer. And 4-wheel drive has never been simpler to operate! On Vigilante powered Wagoneers, a diagram is embossed on the shift lever to indicate the two 4-wheel drive ranges available and how you shift from one to the other. And because it's so easy to go from 2 to 4-wheel drive that you hardly notice the transition, indicator lights have been added to signal when 4-wheel drive is engaged.

Great wagon . . . great way to go! The 'Jeep' Wagoneer is the only 4-wheel drive station wagon with the stylish appearance and luxury manners of a modern family car! Case in point is the Wagoneer's clean-lined body and spacious, beautifully-appointed interior. And the Wagoneer handles as easily as more expensive station wagons — thanks to its modern variable rate rear springs, servo-type brakes and the optional Turbo Hydra-Matic* transmission. You can also choose the high-performance Vigilante V-8, power steering, power brakes and many other options. All of which simply mean you travel in style and comfort wherever you go . . . and that takes in a lot of territory. Cut off the road and drive to your favorite fun spot or work site. With traction at all four wheels, you'll go over rough terrain that would stop most cars. And the Wagoneer's 4-wheel drive helps to keep you from skidding on wet pavement or getting stuck in snow and mud. See and test drive the fashionable, versatile, sensibly economical Wagoneer at your 'Jeep' dealer's now!

*Trademark of General Motors Corporation.

GLADIATOR TOWNSIDE & THRIFTSIDE

'Jeep' Gladiator Trucks are popular because truck owners like to save time, work and money. Gladiator Trucks save you time because they're not limited to conventional roads. Where the highway ends, 'Jeep' 4-wheel drive begins . . . to start you moving and keep you moving over rough terrain. Thanks to Gladiator's optional power take-off, you can use special equipment such as winches, snow plows, wreckers, dump bodies and other items that save work. And the Gladiator's versatility and extended maintenance schedule save you money, mile after mile — year after year. Combine new, bigger payload capacities with high ground clearance and a sleek, new appearance (plus the Vigilante V-8 and Turbo Hydra-Matic* automatic transmission, if you choose) and you'll find that Gladiator Trucks make good sense to truck owners. There's a 2 or 4-wheel drive Gladiator Truck for you in wheelbases of 120 or 126 inches and gross vehicle weights from 5,000 to 8,600 pounds — seven and eight-foot pick-up boxes plus stake bodies with or without dual rear wheels. Test drive a Gladiator Truck at your 'Jeep' dealer's soon.

The 'Jeep' 4-wheel drive Panel Delivery takes on heavy payloads just as easily as a half-ton pick-up. And the Panel Delivery's 107 cubic feet of cargo area means fewer return trips to your dock, making delivery jobs more profitable. The Panel Delivery maneuvers quickly through traffic, too . . . turns in a radius of less than 23 feet. And with 4-wheel drive, you can make deliveries where conventional vehicles can't. Also available with 2-wheel drive.

*Trademark of General Motors Corporation.



EASIER LOADING. 'Jeep' Gladiator Trucks are up to 7½ inches lower from bed to ground than most competitive trucks, saving you a mile of stooping and straining every year. Constructed entirely of high gauge steel, Gladiator Pick-up beds resist dents and don't warp like wood. Count on Gladiator Trucks to make your loading and unloading jobs easier and faster.

HIGHER GROUND CLEARANCE. Expect to sacrifice ground clearance for a low truck silhouette? Not with 'Jeep' 4WD Gladiator Trucks! They tackle rocky, rutted terrain that conventional trucks (as well as some competitive 4-wheel drive jobs) can't handle. And Gladiator Trucks provide a low transfer case gear ratio and the optional Vigilante V-8 to keep you moving when the going gets really rugged.

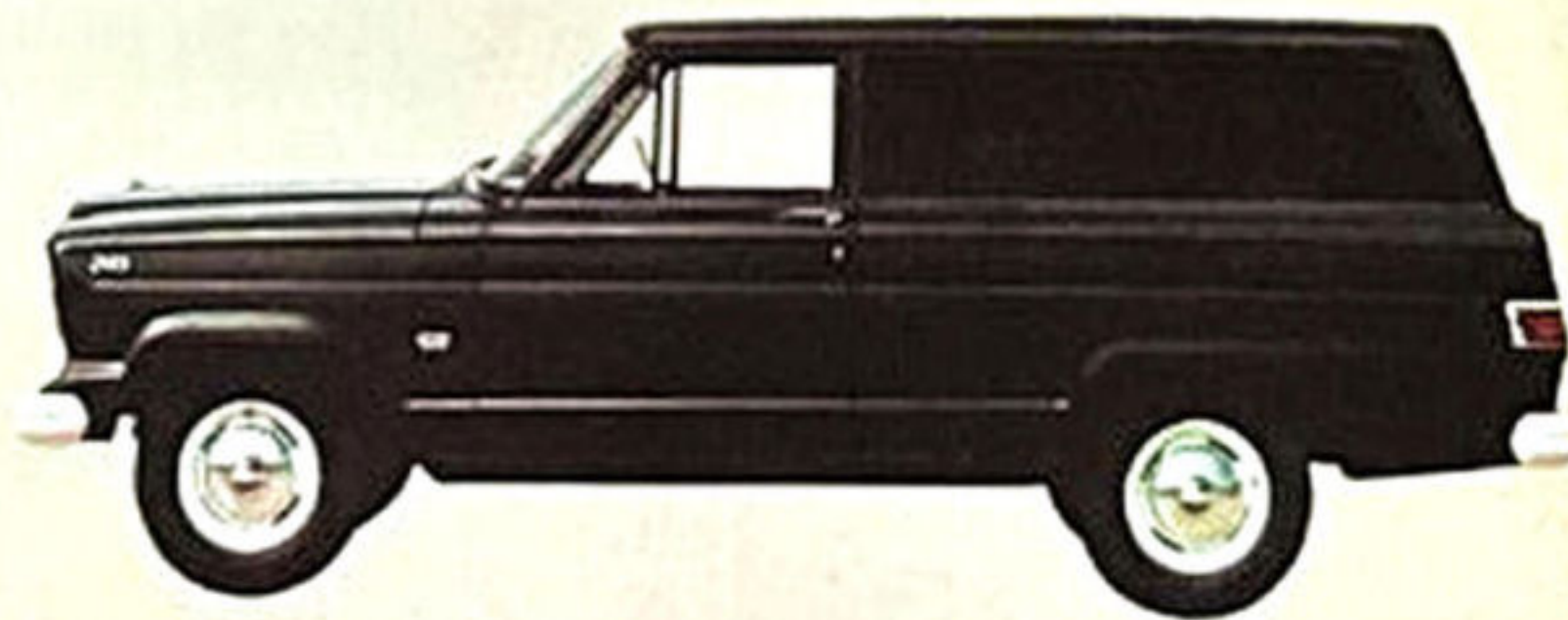
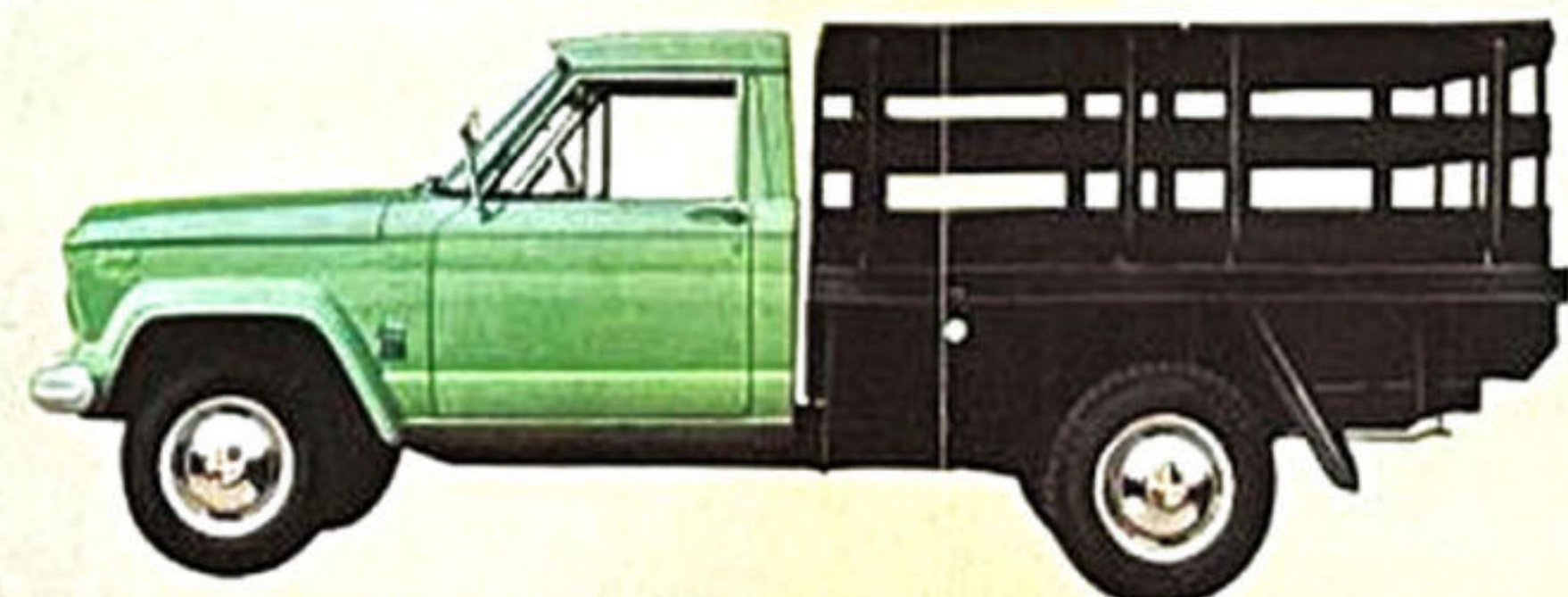
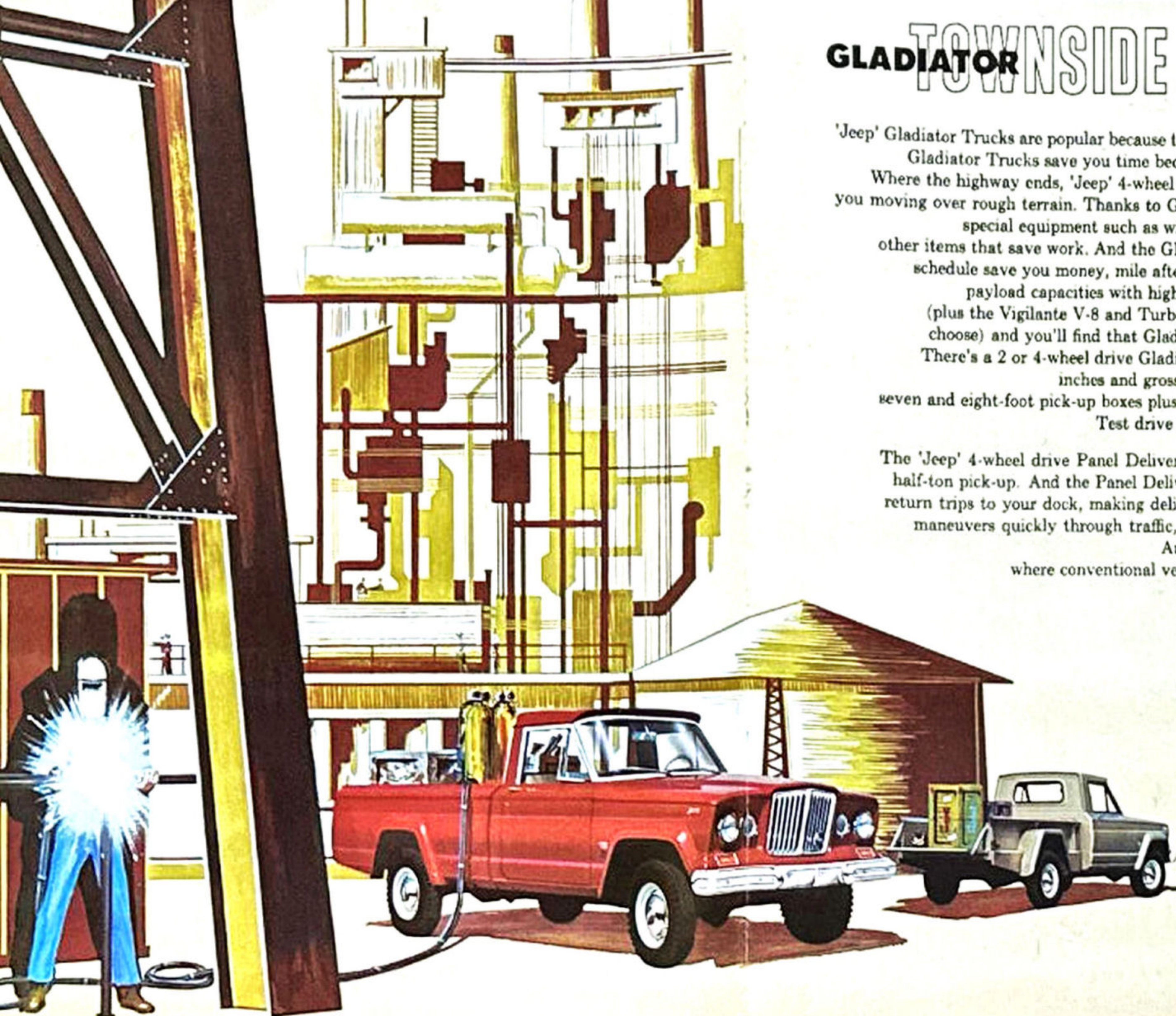
FASTER SERVICING. Gladiator Truck hoods open from fender-to-fender and from grille-to-firewall, providing fast, easy access to the powerplant. And the hoods are as much as eight inches lower than many competitive trucks! Also consider Gladiators' extended service requirements, simplified engine design and logical placement of components — all of which mean faster servicing, more on-the-job time and a more profitable truck operation.



EASIER 4-WHEEL DRIVE SHIFTING. Gladiator 4-wheel drive requires no clutching or stopping to shift. Simply nudge the transfer case shift lever back and you're in 4-wheel drive high range. And another shift of the lever puts you in 4-wheel drive low range to reckon with the toughest driving situations. The shift pattern is diagrammed on the knob and an indicator light signals when 4WD is engaged. Dual range transfer case is standard with 4-wheel drive Gladiators with 3-speed, 4-speed and Turbo Hydra-Matic* transmissions.

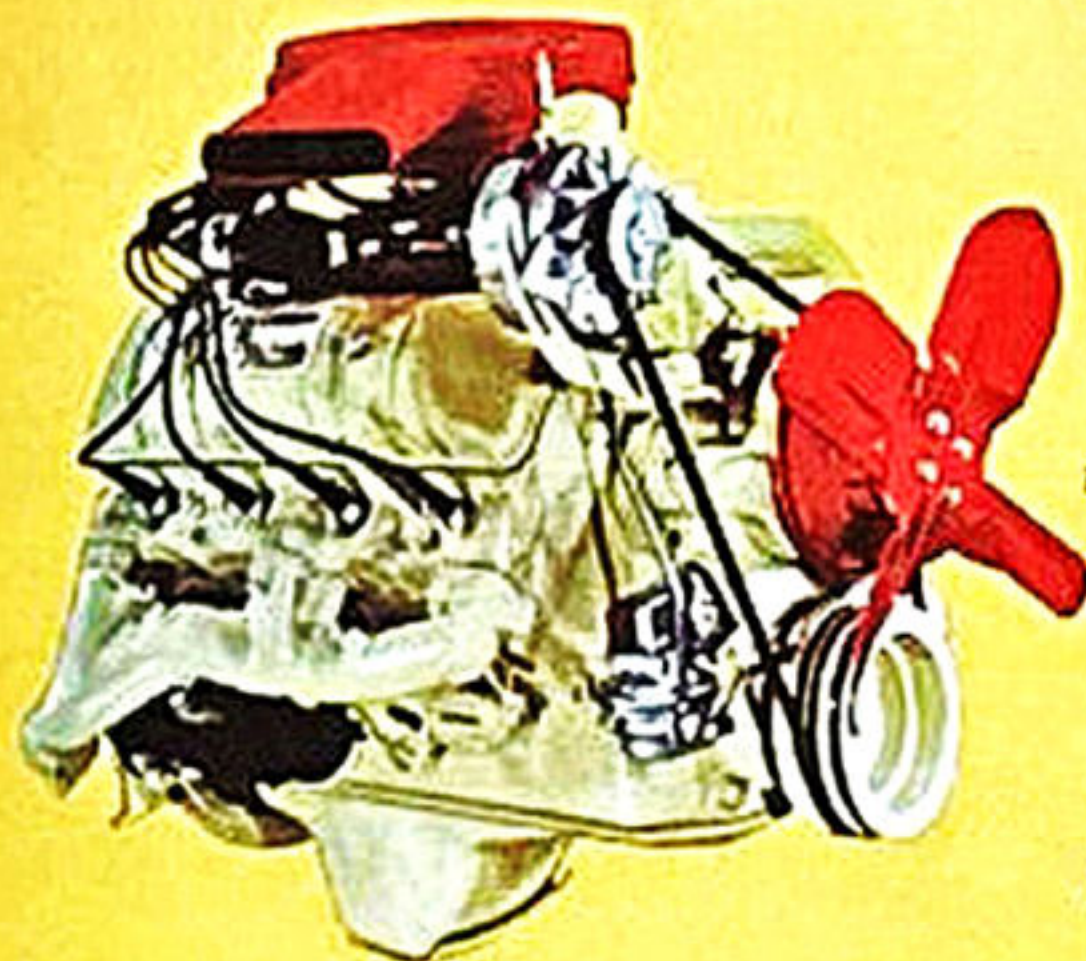
CUSTOM INTERIOR. You'll like the comfort and styling of Gladiator Custom Cabs. (In fact, they almost do justice to a family car!) Custom Cabs include color-keyed, washable vinyl seat fabrics, headlining and door trim . . . dual sun visors, foam seat cushions, arm rests, stainless steel window moldings, chrome grille and chrome front bumper.

OFF-ROAD CAMPING. With 'Jeep' 4-wheel drive underfoot, the Gladiator provides twice the traction of ordinary pick-up trucks . . . lets you pass up camping parks for the uncharted wilds. The 4WD Gladiator takes deep snow, icy and muddy trails all in stride, too — for camping enjoyment almost anywhere regardless of weather or terrain. Seven and eight-foot Gladiator Pick-up boxes accommodate most popular camper bodies.



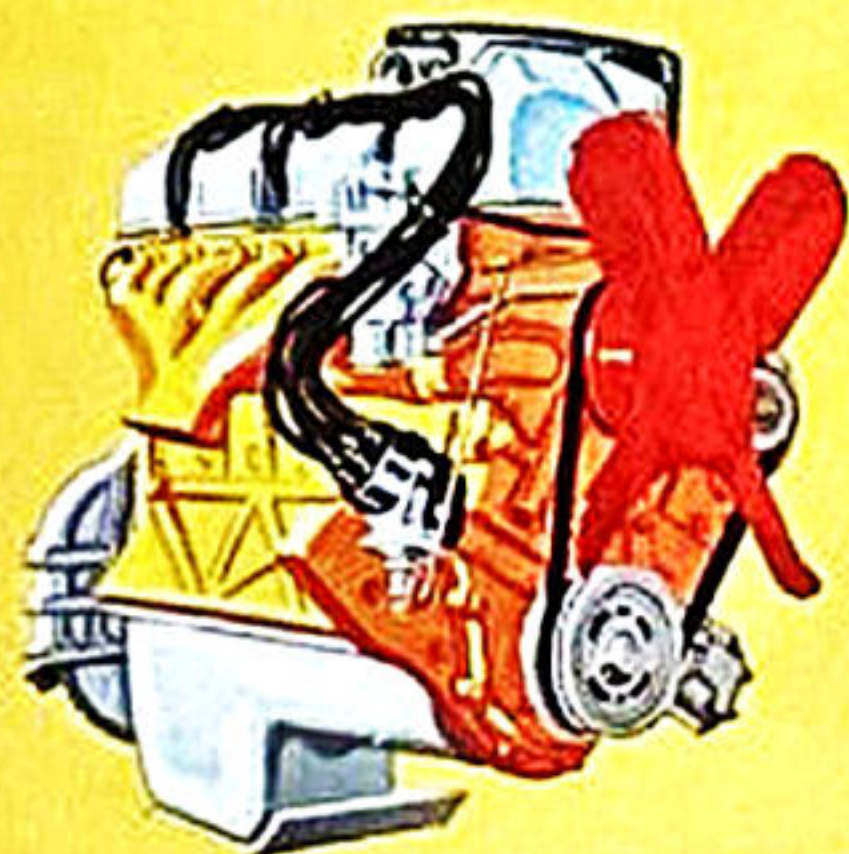
ENGINES

ENGINES



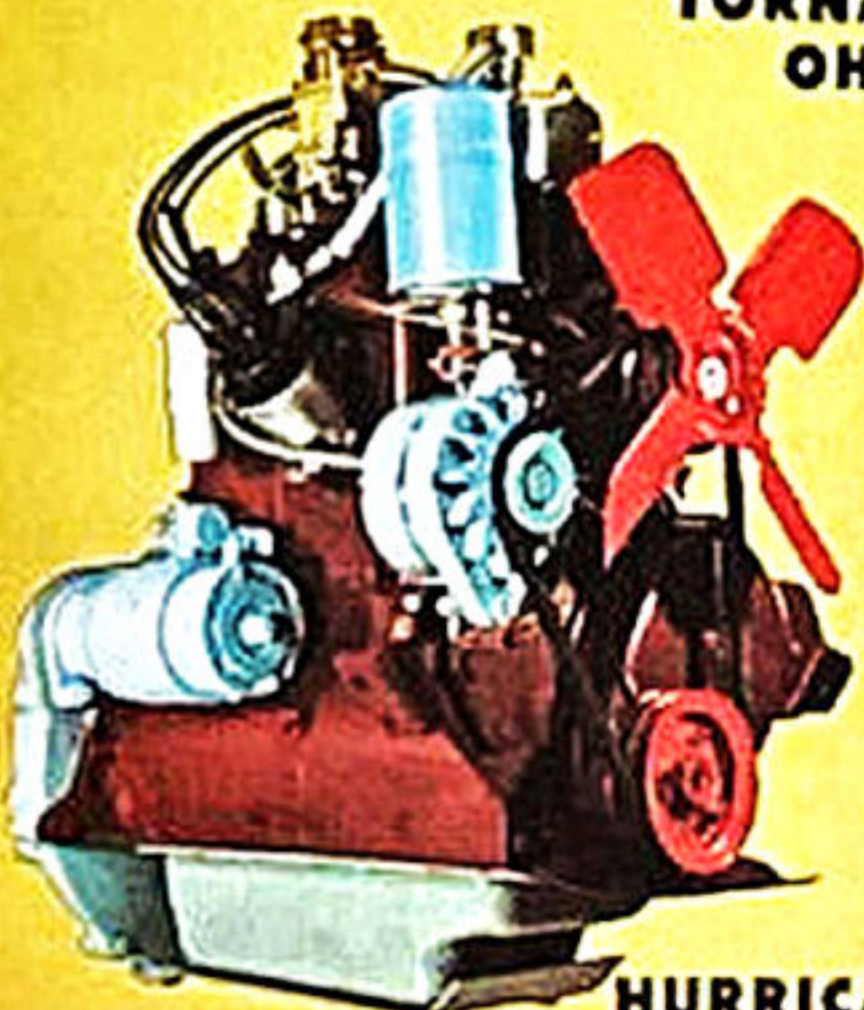
VIGILANTE V-8

VIGILANTE V-8. New name, new size, new spirit — that's the optional 250 h.p. Vigilante V-8. Its big-engine displacement provides more power than you'll get in most other trucks . . . and in any other 4-wheel drive station wagon! The Vigilante offers extra-duty performance to get the 'Jeep' Wagoneer, Gladiator and Panel Delivery in and out of tough driving situations and has the extra-duty features to prove it: cubic inches of displacement, 60 amp battery, Autothermic pistons, steel-backed bearings, hydraulic valve lifters, and much more. Develops 250 h.p. at 4,700 r.p.m. 340 lbs. ft. of torque at 2,600 r.p.m. Full-flow oil filter, full pressure lubrication plus short piston stroke and overhead valve economy on regular gas.



TORNADO OHC

TORNADO-OHC. It takes a versatile engine to combine off-road go power with highway cruising economy. That's why the versatile Tornado-OHC is standard with 'Jeep' Wagoneers, Gladiators and the Panel Delivery. Its overhead cam design, the only one on American automotive production lines, requires fewer moving parts to rob you of power, fewer moving parts to service and repair. Domed pistons allow for more complete fuel combustion . . . large valves ease the flow of intake and exhaust vapors, resulting in economy you can get in few similarly sized engines. The Tornado-OHC provides 140 h.p. at 4,000 r.p.m. and 210 lbs. ft. of torque at a low 1,750 r.p.m. with just 230.5 cubic inches of displacement . . . and low-cost regular gas. Alternator and closed crankcase ventilation are standard.



HURRICANE

HURRICANE. There's no need to compromise between power and economy: the 4-cylinder 'Jeep' Hurricane gives you both 4-cylinder economy plus power. Standard with the Universals and Tuxedo Park Mark IVs, the Hurricane has many of the same features of bigger engines, but costs less to operate and maintain. The Hurricane develops 75 h.p. at 4,000 r.p.m. and torque peaks to 114 lbs. ft. at 2,000 r.p.m.

PERKINS "FOUR 192" DIESEL. Optional with the CJ-5 and CJ-6 Universals, the Perkins diesel engine offers improved fuel mileage and lower maintenance costs than gasoline engines. The Perkins "Four 192" develops 60 h.p. at 3,000 r.p.m. and 143 lbs. ft. torque.



'Jeep' Wagoneer Custom Station Wagon

Available with 2 or 4-doors, 2 or 4-wheel drive



'Jeep' Wagoneer Station Wagon

Available with 2 or 4-doors, 2 or 4-wheel drive



'Jeep' Panel Delivery

Available with 2 or 4-wheel drive



'Jeep' Gladiator Stake Truck

Available with 2 or 4-wheel drive, single or dual rear wheels, standard or Custom Cab



'Jeep' Gladiator Thriftside Truck

Available with 2 or 4-wheel drive, standard or Custom Cab



'Jeep' Gladiator Townside Truck

Available with 2 or 4-wheel drive, standard or Custom Cab

UNIVERSAL

'Jeep' Universals are the ones that set the standards. Performance standards that mean you'll go safely and surely over paved routes or the rugged ones . . . over ice, mud, snow and sand. And the Universal's versatility makes it ideal for work or fun — allows you to attach winches, mowers, wreckers, diggers and other equipment. Come trade-in time, you'll find that the Universal holds its value longer than any other vehicle!

It should come as no surprise, then, that the 'Jeep' Universal is America's most popular little 4 x 4. (It's been consumer-approved longer than any other vehicle.) What is surprising is that now there is even more to like about it. For instance, there are new metal cab options . . . new 2-wheel drive models with variable rate springs and a variety of seat and top combinations . . . plus all the design advances made under our program of continuous product improvement. No wonder the Universal is more attractive now to families desiring an economical second car and to deliverymen, contractors, sportsmen and businessmen. Test drive one now and see!



OPTIONS ACCESSORIES

UNIVERSAL SERIES, 4WD

Fresh Air Heater and Defroster • Ventilating Windshield • 1/2 Front Passenger Seat • Longitudinal Rear Seats • Wheelhouse Cushion Pads (CJ-5 only) • Rear Passenger Seat • Full Fabric Top • Metal Half Cab or Full Cab • Convertible Tops • Windshield Washer • Rear Bumpers • Outside Right Rear View Mirror • Inside Rear View Mirror • Locking Gas Cap • Wheel Covers • Spare Tire Cover • Spare Wheel Lock • Power-Lok Differential, Front and Rear • Overdrive • 50, 60, 70 Amp. Battery • 9 1/4" Clutch • 40, 60 Amp. Alternator • Governor • Power Take-Off Options • 4-Speed Transmission • Heavy-Duty Springs and Shock Absorbers • Front Bucket Seat • Radiator Chaff Screen • Drain Plug, Magnetic • 1/2 Driver Seat • Wrecker • Directional Signals with 4-Way Flasher • Tailgate Mounting for Spare Tire • Pindle Hook • Diesel Engine • Angledozer • Terracing Blade • Rotary Broom • Push Plate • Step Bumper • Compressor • Selective Drive Hubs • Implement Lift • Rotary Mower • Post Hole Digger • Snow Plow • Trencher • Welder • Winch • Hi-Cool Engine Fan

UNIVERSAL SERIES, 2WD

Fresh Air Heater and Defroster • Ventilating Windshield • 1/2 Front Passenger Seat • Longitudinal Rear Seats • Wheelhouse Cushion Pads (CJ-5 only) • Rear Passenger Seat • Full Fabric Top • Metal Half Cab or Full Cab • Convertible Tops • Windshield Washer • Rear Bumpers • Outside Right Rear View Mirror • Inside Rear View Mirror • Locking Gas Cap • Wheel Covers • Spare Tire Cover • Spare Wheel Lock • Power-Lok Rear Differential • Overdrive • 50, 60, 70 Amp. Battery • 9 1/4" Clutch • 40, 60 Amp. Alternator • Governor • Front Bucket Seats • Radiator Chaff Screen • Drain Plug, Magnetic • Directional Signals with 4-Way Flasher • Tailgate Mounting for Spare Tire • Draw Bar • Pindle Hook • Step Bumper • Half Fabric Top

TUXEDO PARK MARK IV

Fresh Air Heater and Defroster • Ventilating Windshield • 1/2 Front Passenger Seat • Front Bucket Seats • Rear Seats • Wheelhouse Cushion Pad (CJ-5A only) • Passenger's Chrome Safety Roll • Full Convertible Top with Boot and Spare Tire Cover • Metal Half Cab or Full Cab • Floor Mats • Chrome Outside Right Mirror • Locking Gas Cap • Wheel Covers • Spare Wheel Lock • Power-Lok Differential, Front and Rear • Overdrive • 9 1/4" Clutch • 40, 60 Amp. Alternator • Governor • Power Take-Off Features • 4-Speed Transmission • Radiator Chaff Screen • Drain Plug, Magnetic • Windshield Washer • Heavy-Duty Rear Springs and Shock Absorbers • Selective Drive Hubs • Snow Plow • Winch • Wrecker • Hi-Cool Engine Fan

WAGONEER

Fresh Air Heater and Defroster • Dual-Speed Electric Windshield Wipers and Washer • Power-Lok Rear Differential • 40 Amp. Alternator • Locking Gas Cap • Spare Wheel Lock • Air Conditioning • Padded Instrument Panel • Radio • E-Z-Eye Glass • Electric Clock • Parking Brake Indicator Light • Rear Seat Belts • Power Steering • Power Brakes • Transmission Brakes (4WD) • Heavy-Duty Springs and Shock Absorbers • Outside Rear View Mirror • Overdrive (2WD) • Winch (4WD) • Snow Plow (4WD) • Selective Drive Hubs (4WD) • Wheel Covers • Push Plate • Draw Bar • Luggage Rack • Power Tailgate Window • Back-Up Lights • Vigilante V-8 • Automatic Transmission (Turbo Hydra-Matic® available with Vigilante only)

PANEL DELIVERY

Fresh Air Heater and Defroster • Dual-Speed Electric Windshield Wipers and Washer • Power-Lok Rear Differential • Chrome Front and Rear Bumpers • 40 Amp. Alternator • Locking Gas Cap • Spare Wheel Lock • Air Conditioning • Padded Instrument Panel • Radio • E-Z-Eye Glass • Parking Brake Indicator Light • Interior Courtesy Lights • Glove Box Lock • Cigar Lighter • Power Steering • Power Brakes • Transmission Brakes (4WD) • Heavy-Duty Springs and Shock Absorbers • Overdrive (2WD) • Winch (4WD) • Snow Plow (4WD) • Selective Drive Hubs (4WD) • Push Plate • Draw Bar • Luggage Rack • Front Passenger Seat • Vigilante V-8 • Automatic Transmission (Turbo Hydra-Matic® available with Vigilante only)

GLADIATOR TRUCKS

Fresh Air Heater and Defroster • Dual-Speed Electric Windshield Wipers and Washer • Power-Lok Rear Differential • Rear Bumper (Painted or Chrome) • Front Chrome Bumper • 40 Amp. Alternator • Power Brakes • Transmission Brakes (4WD, Standard with 8600 lb. GVW) • 4-Speed Transmission (Standard with 8600 lb. GVW) • Tonneau Cover • Locking Gas Cap • Spare Wheel Lock • Air Conditioning • Padded Instrument Panel • Radio • E-Z-Eye Glass • Parking Brake Indicator Light • Glove Box Lock • Cigar Lighter • Chrome Grille • Deluxe Rear Window • Power Steering • Custom Cab • Outside Rear View Mirror • Pindle Hook • Angledozer (4WD) • Push Plate • Step Bumper • Selective Drive Hubs (4WD) • Dump Body • Snow Plow (4WD) • Winches (4WD) • Service Body • Wrecker • Vigilante V-8 • Automatic Transmission (except 8600 lb. GVW models, Turbo Hydra-Matic® available with Vigilante only)

Trademark of General Motors Corporation.



HALF METAL CAB

TOPS CABS

It's simple to tailor the 'Jeep' Universal to exactly fit your requirements—thanks to a variety of body enclosures. Choose from metal cabs or fabric tops covering just the front passenger and driver compartment or the entire Universal body. Metal cabs feature automotive type steel panels, sliding or hinged doors and, on some models, roll-down windows and lockable doors. Fabric tops are stain resistant and shrink resistant with thick vinyl windows.



HALF FABRIC TOP



TWO FULL METAL CABS



FULL FABRIC TOP



CONVERTIBLE TOP

Jeep SPECIFICATIONS*

	WAGONEER		PANEL DELIVERY		J-2600 GLADIATOR		J-3600 GLADIATOR		TUXEDO PARK MARK IV		UNIVERSAL			
	2WD	4WD	2WD	4WD	2WD	4WD	2WD	4WD			CJ-5	CJ-6	DJ-5	DJ-6
Wheelbase (in.)	110	110	110	110	120	120	126	126	81	101	81	101	81	101
Overall Length (in.)	183.66	183.66	183.66	183.66	188.56	188.56	200.56	200.56	136.18	156.18	138.16	158.16	135.18	156.18
Front Axle — Capacity (lbs.)	2,500	2,500	2,500	2,500	3,500	3,000	3,500	3,000	2,000	2,000	2,000	2,000	2,000	2,000
Rear Axle — Capacity (lbs.)	3,000	3,000	3,000	3,000	4,500	4,500	4,500	4,500	2,500	2,500	2,500	2,500	2,000	2,000
— Ratio (to one)	4.09†	4.09†	4.09†	4.09†	4.27†	4.27†	4.27†	4.27†	4.27	4.27	4.27	4.27	4.56	4.56
Effective Brake Lining Area (in.)	161.6	161.6	161.6	161.6	161.6	161.6	161.6	161.6	174.0	174.0	102.7	102.7	117.42	117.42
Clutch Area (in.)	100.5†	100.5†	100.5†	100.5†	100.5†	100.5†	100.5†	100.5†	72	72	72	72	72	72
Front Suspension	Leaf	Leaf	Leaf	Leaf	Leaf	Leaf	Leaf	Leaf	Variable Rate Leaf	Leaf	Leaf	Leaf	Variable Rate Leaf	Leaf
Rear Suspension	Variable Rate Leaf	Leaf	Leaf	Leaf	Variable Rate Leaf	Variable Rate Leaf	Variable Rate Leaf	Variable Rate Leaf	Variable Rate Leaf	Leaf	Leaf	Leaf	Variable Rate Leaf	Variable Rate Leaf
Standard Tires	7.75x15	8.15x15	7.75x15	8.15x15	7.00x16†	7.00x16†	7.00x16†	7.00x16†	7.35x15	7.35x15	6.00x16	6.00x16	6.85x15	6.85x15
Turning Radius (ft.)	20.5	22.3	17.5	22.3	20.7	24.8	21.7	26.3	17.5	21.3	17.5	21.3	17.4	20.0
Weight, Curb (lbs.)	3,588†	3,731†	3,388†	3,531†	3,159†	3,378†	3,202†	3,411†	2,274	2,336	2,274	2,336	1,907	2,040
Weight, G. V. W. (lbs.)	4,200	4,500	4,200	4,500	6,000†	6,000†	6,000†	6,000†	3,750	3,900	3,750	3,900	2,800	2,800

†Consult detail specifications for additional data relative to gross vehicle weights and Vigilante V-8.

*Specifications subject to change without notice. This brochure does not constitute an offer or commitment to sell. Orders for vehicles and other items are subject to acceptance by KAISER Jeep CORPORATION, its authorized distributors and dealers.

KAISER Jeep CORPORATION • TOLEDO 1, OHIO
 WORLD'S LARGEST AND MOST EXPERIENCED
 MANUFACTURER OF 4-WHEEL DRIVE VEHICLES

DISTRIBUTED BY:

KAISER Jeep SALES CORPORATION • TOLEDO 1, OHIO

KAISER Jeep INTERNATIONAL CORPORATION • OAKLAND 12, CALIFORNIA

KAISER Jeep OF CANADA LTD. • WINDSOR, ONTARIO

AND OTHER AUTHORIZED DISTRIBUTORS

Form No. 64-08R1

Litho in U.S.A.

FROM:

TO: