

1985 Mitsubishi Starion



Behold the power of reason.

The 1985 Mitsubishi Starion Turbo is a remarkable example of ingenious engineering. From its turbocharged engine, to its sleek aerodynamic lines, to its ergonomic interior, the Starion Turbo is overtly designed to become a direct extension of its driver. And it succeeds.

With flying colors.

The Starion's 2.6-liter MCA-Jet™ engine and its high-output turbocharger were engineered and built as a unit to work in close harmony. So the turbo isn't



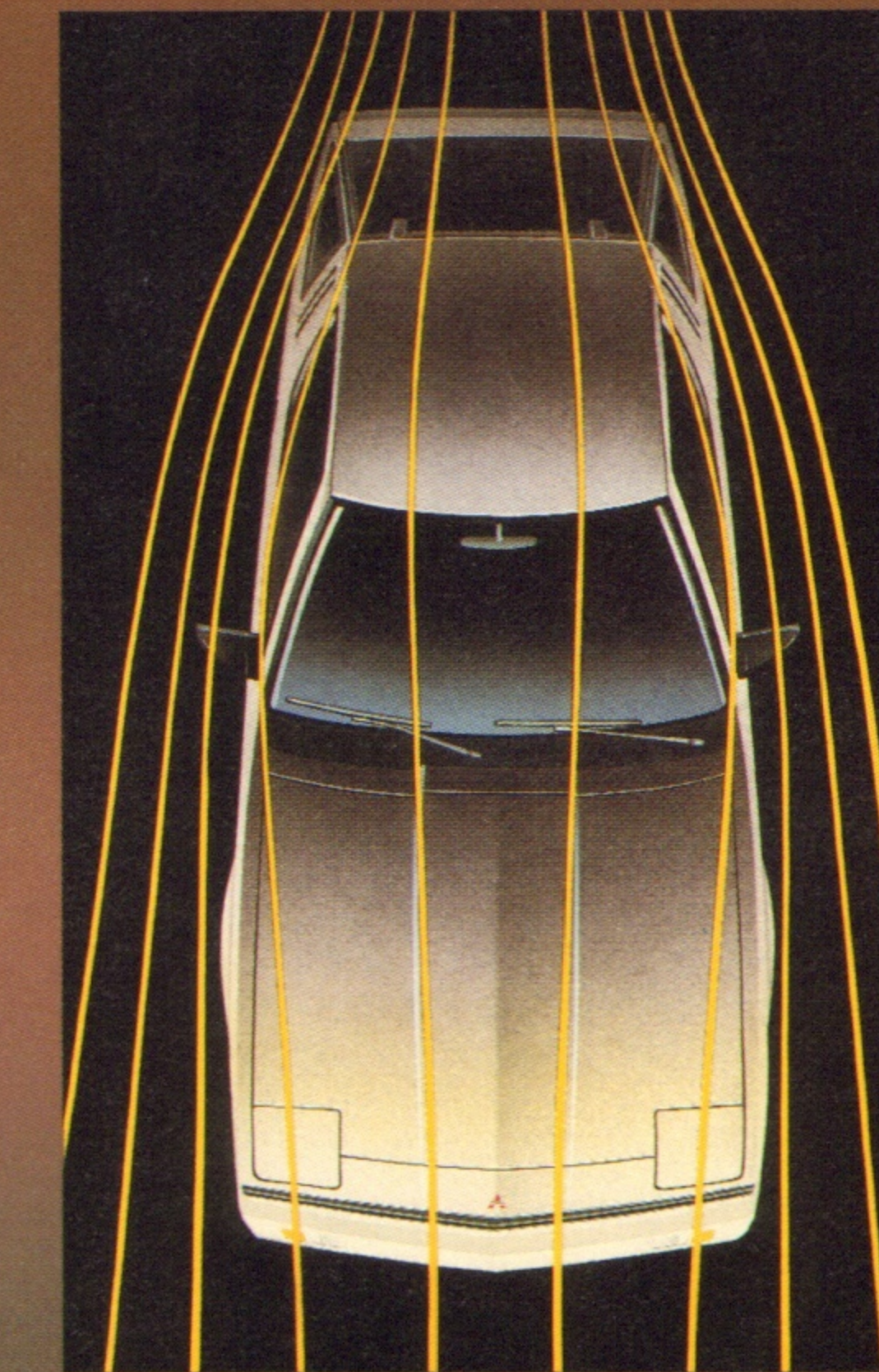
A responsive 8-oz. turbine assembly virtually eliminates turbo lag.

just a trendy afterthought. Coupled with the highly advanced Mitsubishi ECI™ electronically controlled fuel injection system, you've got plenty of crisp on-demand performance for pure driving pleasure.

This exceptional powerplant is integrated into an equally exceptional chassis. The Starion rides on four-wheel-independent suspension with coil springs and gas-filled shocks all around. The cast alloy wheels are fitted with ventilated, power-assisted disc brakes and high-performance radial tires. And the whole package is surrounded by a beautifully aerodynamic body.

So it cuts the wind with minimal resistance. And maximum style, as well.

The Starion's truly enlightened engineering has been applied to its interior as well. The multi-adjustable, and ergonomically designed front seats provide you and your passenger with an extraordinary level of



Extensive wind-tunnel testing yielded Starion's sleek, aerodynamic wedge shape.

comfort and lateral stability. Complete and logically situated instrumentation keeps the driver well-informed of all the vehicle's vital functions. The Starion even has a long list of power and convenience features, such as cruise control, power-assisted steering and brakes, and power remote control outside dual mirrors, for added comfort and luxury.

There are few machines in its class that can compare to the Starion's clever combination of performance, practicality and luxury. And even fewer still that can match its remarkably affordable price.

The ingenious 1985 Starion Turbo is vivid proof that brain-power and horsepower make a very potent combination.



Slip into something ergonomic.

Designed to be driven. No matter which Starion Turbo you're talking about, the words aptly apply. Because the cockpit of every Starion has been intelligently and intentionally laid out to function in exact harmony with its occupant. The ultimate goals of maximum performance and maximum comfort are met from both a form and function point of view.

Driver and passengers are provided with extraordinary comfort as well as control. The Starion LS comes with luxurious four-way adjustable front bucket seats. The LE model and ES model feature six-way adjustable turbo seats. In all cases, the state-of-the-art ergonomic design is readily apparent everywhere.

The instrumentation is clear, complete and logical. The



Starion LE model includes remote radio switches mounted right in the steering wheel for convenient control.

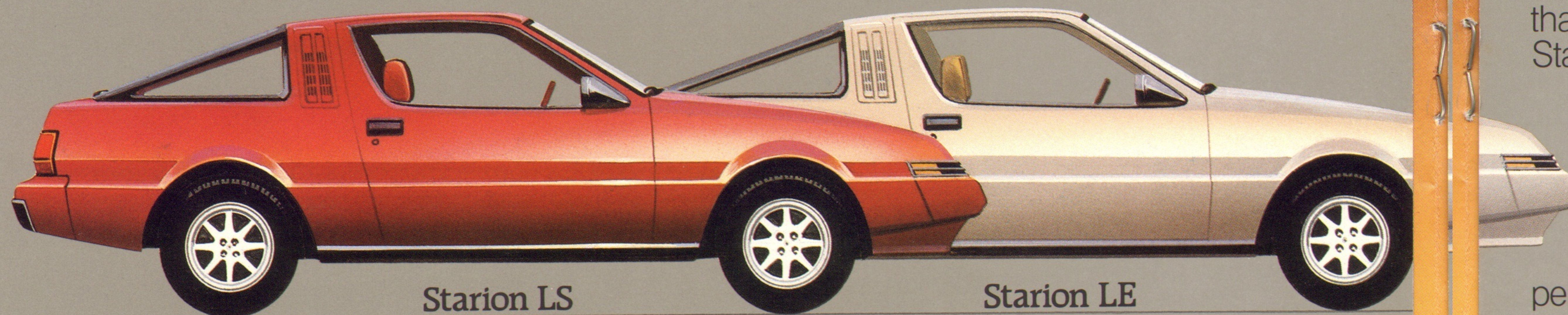
thick-grip steering wheel and shifter precisely conform to the anatomy of the human hand.

Everything is here. And everything is in its proper place.

So when you get behind the wheel of a new Mitsubishi Starion Turbo, you're right where you want to be.

Six-way adjustable seats put you in a position of power that you'll be quite comfortable with.

Don't take slow for an answer.



Starion LS

Starion LE

Like all Starions, the LS is powered by the turbocharged, fuel-injected 2.6-liter MCA-Jet™ engine. This 145-horsepower thriller is well matched to a standard 5-speed manual overdrive transmission. Together, they give you outstanding power and versatility.

Inside, the Starion LS provides a comfortable, yet functional place from which to enjoy the action. Its four-way front bucket seats, along with its standard variable-assist power steering, ventilated four-wheel power disc brakes and power windows, are designed to keep you fresh and ready for action.

To keep you informed, the Starion LS has a complete set of analog instruments, as well as a digital quartz clock. Cruise control helps to take the fatigue out of the long hauls. And there's even an electronically tuned AM/FM stereo cassette system with six speakers for true high-fidelity sound.

As the most affordable Starion, the handsome LS offers exceptional value. And, with all its high performance, comfort and convenience features, you'll be hard-pressed to find more machine for your money.



Split fold-down rear seats provide all kinds of cargo capacity.

One sure way to recognize the Starion LE model is by the handsome bronze-tint windows. Another might be the glistening available two-tone paint. But the real extras that come with the LE model are on the inside.

Where you spend most of your time.

The first thing you notice are the extraordinarily comfortable, six-way, leather turbo seats. Next, your eyes are drawn to the beautifully functional LCD digital/graphic instruments.

Then there's the remote radio switches, mounted right in the steering wheel for fingertip control. The radio itself comes equipped with a built-in graphic equalizer for superb audio. And the LE model also includes automatic temperature control air conditioning with soft-touch buttons. Power door locks. A leather-wrapped steering wheel. Even a lighted passenger vanity mirror. All to make your driving easier.

And if you desire, you can equip your new LE with an optional four-speed overdrive automatic transmission with a handy overdrive-lockout button for better acceleration control.

So whether you want a fast, good-handling car with luxurious features, or a luxury car

that really performs, a beautiful new Starion LE is the machine for you.

Regardless which Starion you select, they all have one very predominant trait. Scintillating high performance. And to complement it, Starion has exceptionally quick handling. The fully independent suspension with gas-filled shocks and big stabilizer bars at both the front and rear help keep things on the right level.

Traction is provided by high-performance radial tires that are mounted on handsome alloy wheels. And four-wheel ventilated, power-assisted disc brakes are designed to provide you with smooth, consistent stopping power under a variety of driving conditions.



Four-speed automatic overdrive transmission is available with the LE model.

On the outside, those sleek good looks didn't happen by luck. Extensive wind-tunnel testing and some clever Mitsubishi design yielded a sleek, aerodynamic shape. So the Starion nets a drag coefficient of only 0.35. And adding to its stylishness and function are tinted windows. Retractable headlights. A front air dam and a rear spoiler. And halogen fog/passing lights integrated into the front bumper.

So if you're looking for a car with plenty of style, luxury, handling and performance, your quest has come to an end.

Starion is the answer.



This is the machine that most performance cars wish they could be. The 1985 Starion Euro Sport represents the highest form of Mitsubishi Ingenuity, as applied to the highest form of high performance engineering.

It starts with the big OHC 2.6-liter MCA-Jet™ engine and its integrally designed, water-cooled turbocharger. The ECI™ electronically controlled fuel injection system microprocesses information from several sources to inject just the right amount of air and fuel. And the engine's special three-valve combustion chamber design helps ensure that the air/fuel mixture is used to its best potential.

The result is the exhilarating on-demand acceleration of Mitsubishi Turbo Power.

All this power is controlled by a smooth, sure five-speed manual overdrive transmission. And a limited-slip differential delivers it to the rear wheels for optimum traction.

The Starion ES rides on a fully independent, turbo-tuned suspension with MacPherson struts in the front, telescopic struts in the rear and stabilizer bars on both ends to provide quick, responsive handling and road-feel.

To be certain that it all meets the road in good form, the Starion ES has 15-inch, 60-Series



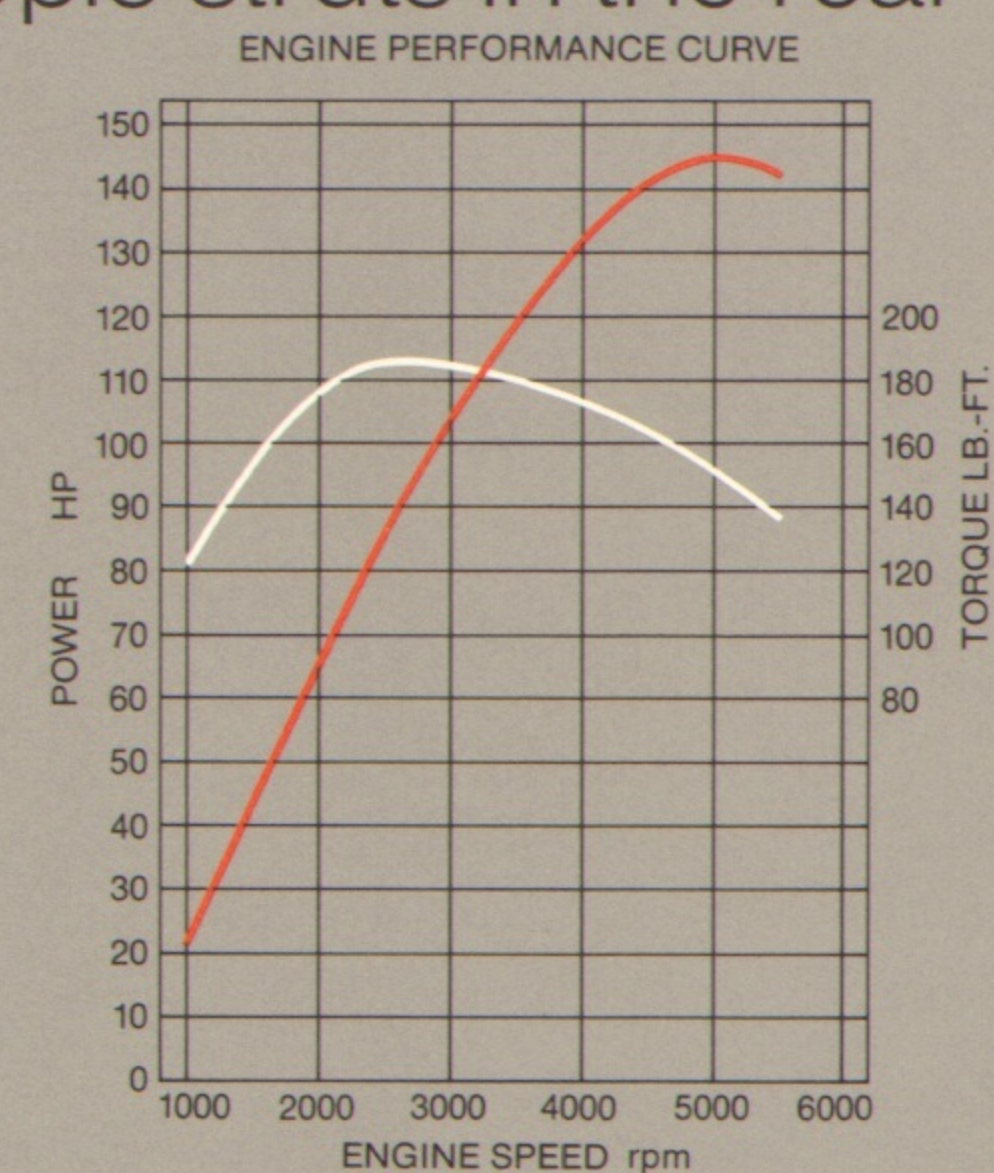
Full analog instrumentation includes a turbo boost gauge. It's logically situated and easily visible, so you can get all the Starion's vital information at a glance.

high-performance tires mounted on beautiful new scoop-vented alloy wheels that help dissipate heat buildup.

For excellent stopping power to match its going power, the Starion ES has four ventilated, power-assisted disc brakes. And in those rare circumstances where very hard braking is needed, an innovative Rear Brake Lockup Control System™ helps you keep a grip on things.

The Starion ES interior is also designed for action. Luxurious comfort, functionality and sheer driving pleasure share equal billing. The six-way adjustable turbo seats, upholstered in stylish buckskin and knit fabric, provide excellent support. They can be fine-tuned to fit a wide variety of human shapes, and they're fully reclining. All controls are within easy reach. There's an AM/FM stereo cassette system with six speakers for superb audio. And all the vital data you need is provided by complete, fast-reading analog instruments including a turbocharger boost gauge.

This Starion also comes equipped with



● MAX. H.P. 145/5000
● MAX. TORQUE 185/2500

Starion's turbocharged, fuel-injected MCA-Jet™ engine produces outstanding horsepower and torque.



Halogen fog/passing lights are stylishly integrated into the bumper.



VELNAS™ trip computer puts a variety of data at your fingertips.

a unique VELNAS™ trip computer. This remarkable on-board computer can tell you your average speed,

driving distance, fuel consumption and fuel economy. All with the push of a button. It also has a stopwatch, an alarm clock and a digital quartz clock built right in.

On the outside, the Starion ES fully benefits from extensive wind-tunnel testing and design. With an extremely low resistance to the wind. And a distinctly high-class appearance. There's a functional air dam in the front

and a spoiler in the rear. Color-keyed mudguards help prevent nicks and scratches on the bodywork at all four wheels. Halogen fog/passing lights are stylishly integrated into the front bumper. And both bumpers are color-keyed with the body.

The Starion ES is obviously the product of highly advanced technology. It is an innovative combination of power, styling, handling and sheer luxury. All at a reasonable price.

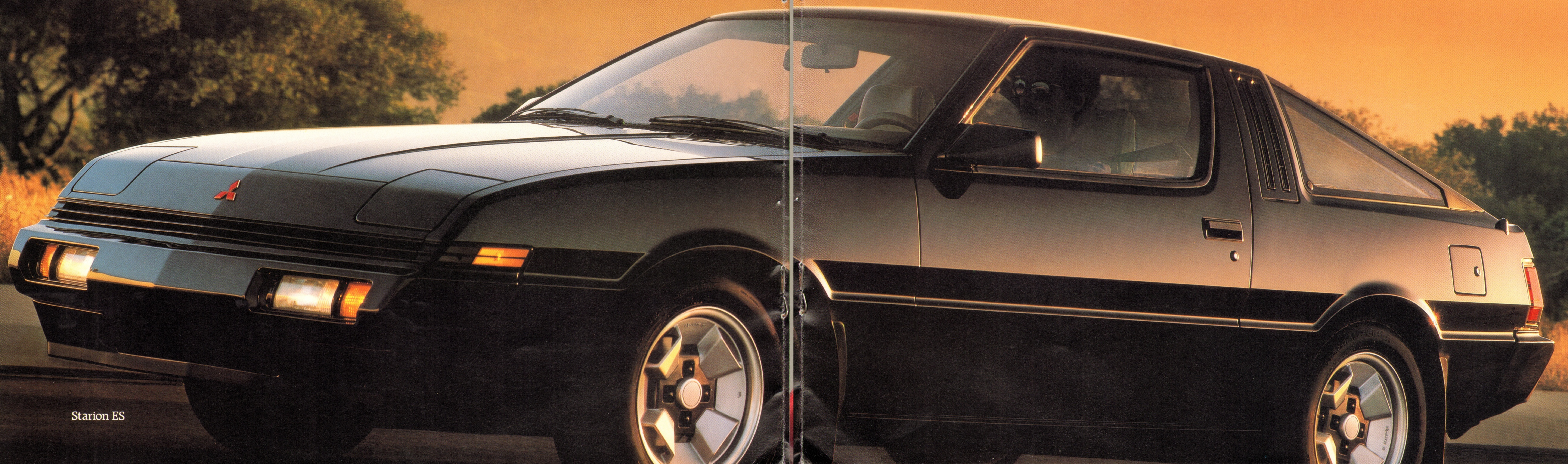
So if you're thinking of a high-performance automobile, think about the 1985 Mitsubishi Starion ES.

And think fast.

Starion ES interior is ergonomically designed for superior comfort as well as control.

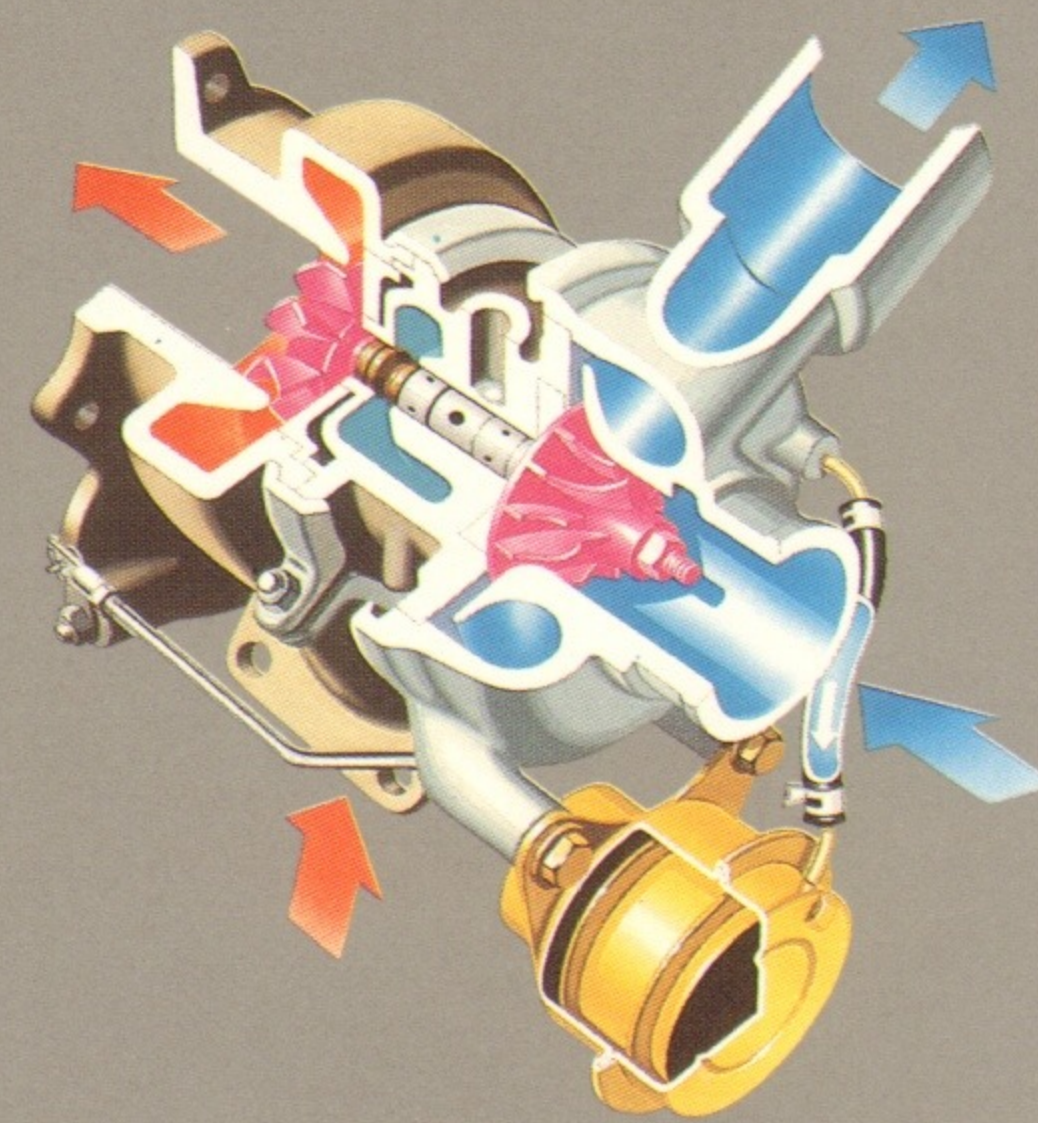


Starion ES. Accelerated thinking.



Starion ES

A powerful array of technical sophistication.



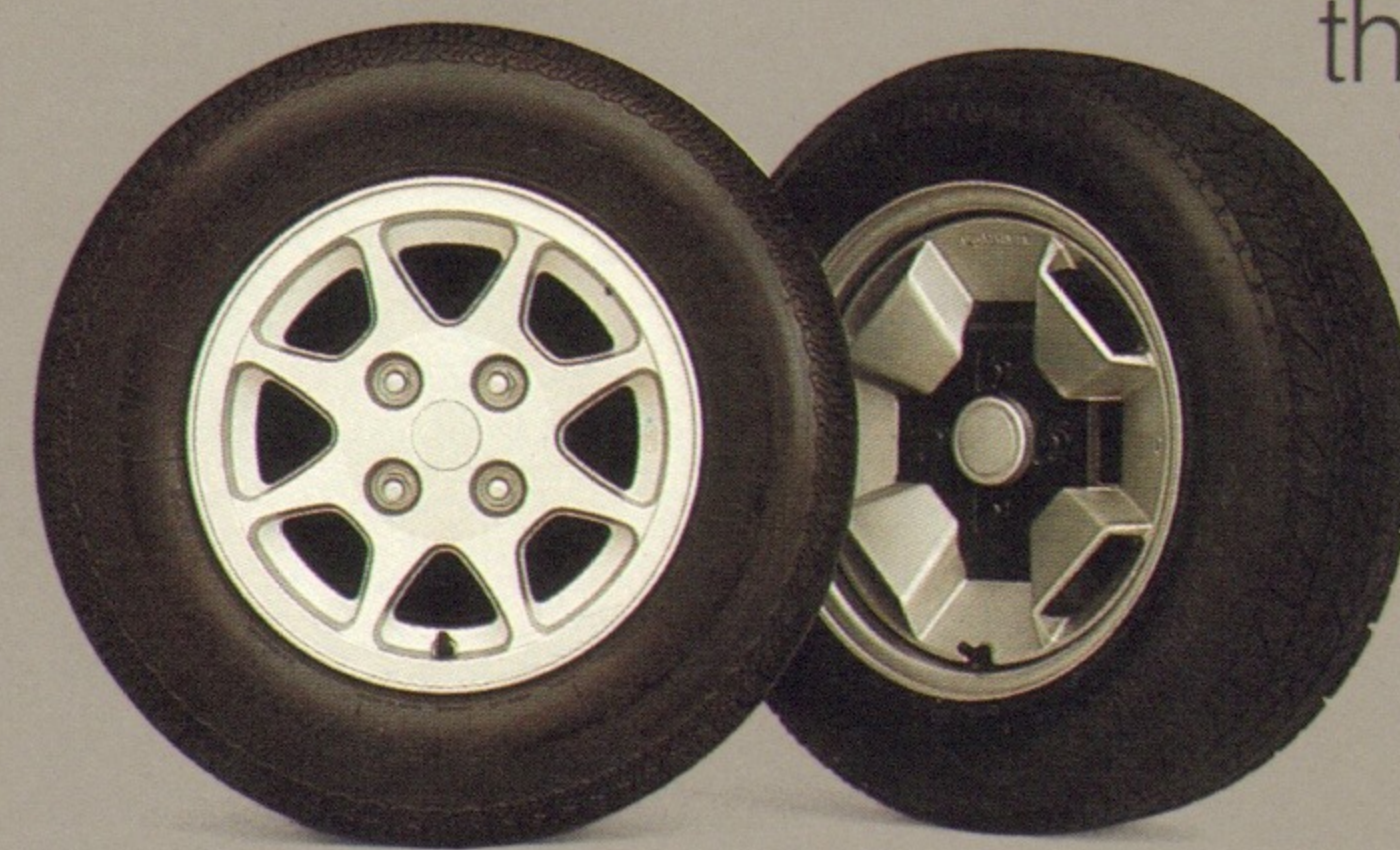
The Mitsubishi water-cooled Turbocharging System gives you loads of power.

When it comes to advanced technology, the 1985 Starion is at the head of the pack. At the heart of the matter is a water-cooled Mitsubishi turbo unit. This turbocharger uses the flow of the exhaust gases to turn a small turbine wheel. A shaft connects the turbine to a compressor wheel in the intake side. The air/fuel mixture is thereby compressed into the engine, providing much more powerful combustion.

And much higher performance. One of the things that distinguishes Mitsubishi turbo units is the unusually low weight and mass of their moving parts. They let the turbo react much more quickly, for superb response. Other, heavier units can be characterized by "turbo lag," and a slower reaction time. Not so for the Starion.

When you step on the gas, things start to happen in a hurry. And in the handling department, the Starion is equally outstanding. Part of the reason is that the Starion rolls on high-performance tires and alloy wheels. Whether they're the 14-inch models on the LS and LE model, or the 15-inch variety on the ES, these wheels are lightweight, yet sturdy.

Not to mention, extremely good-looking. Inside the Starion's cockpit, the innovative genius is visible everywhere. With features like



Light alloy wheels, 15-inch on the ES and 14-inch on the LE Package and LS, are fitted with high-performance radial tires.



Starion LE model features easy-to-read LCD digital/graphic instruments.

a very convenient electronic time and alarm control system. Among many other things, ETACSII™ tells you if you've forgotten to turn the headlights off. And allows you to vary the intervals at which the intermittent windshield wipers function.

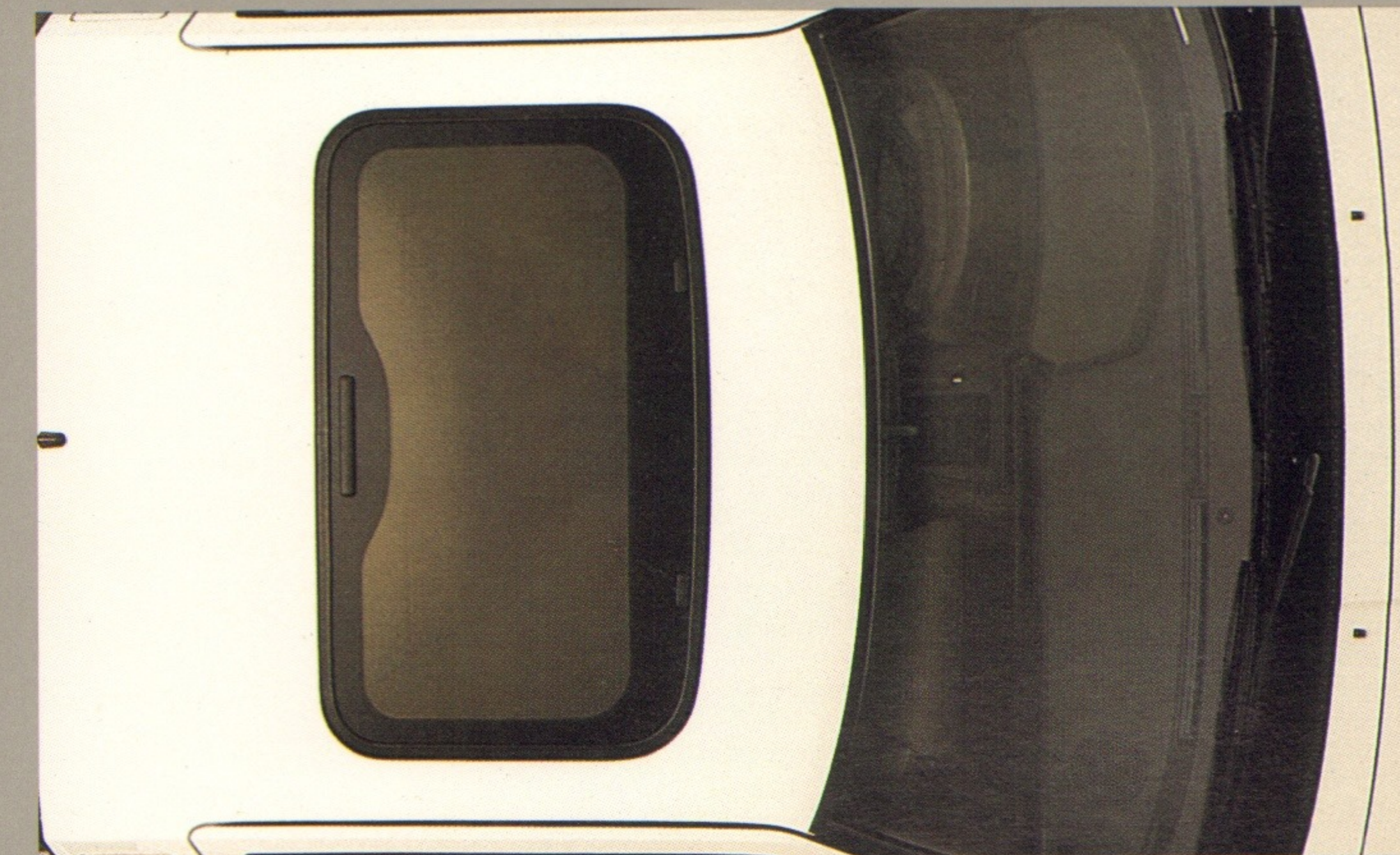
Power window controls are found on a door-mounted armrest console. With the LE model, power door locks are included, too. And all Starions feature power mirrors and a height-adjustable steering column.

For your listening pleasure, every Starion is equipped with an electronically tuned AM/FM stereo cassette system. With six high-fidelity speakers. The LE model also features a built-in graphic equalizer, a high-powered amplifier and

Power window controls are mounted in an armrest console.



Soft-touch switches operate the automatic temperature control system with ease.



Starion's available sunroof is adjustable and removable.



Outstanding AM/FM stereo cassette system with electronic tuning is standard in the Starion LS and ES.

radio switches built right into the new steering wheel. An ideal driving environment is enhanced by a superb automatic temperature control air conditioning system, standard with the LE model and the ES model, optional on the LS. This fully automatic system lets you set the desired level of heating, cooling or ventilation. And it does all the rest, even selecting the proper air outlet automatically. It's operated with easy access, soft-touch controls, too.

Being the versatile machine that it is, the Starion can carry a variety of cargo. The split rear seats can fold down independently or together. And the rear tonneau cover can be removed completely. There are even cargo tie-down straps to keep things put.

To maintain a clear view of where you've been, all Starions have rear window washers, wipers and defrosters. And up front, halogen fog and passing lights are integrated into the bumper for functionality and good looks.

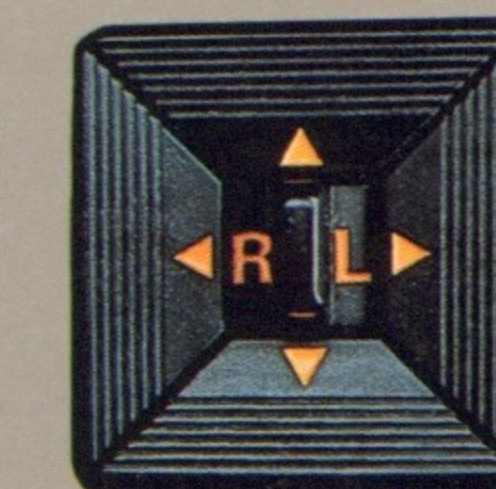
Integrated halogen fog/passing lights and retractable headlights give you a good look.

To keep the Starion looking good, Mitsubishi technology has even been applied to the problem of body corrosion. After precise welding of top-quality, zinc-plated steel, many sections of the body are injected with wax. Special sealing measures are taken to prevent water absorption, and the whole structure is dipped in primer. Then, specific areas are treated with special types of anti-corrosion materials before painting. Mitsubishi Motors is so confident in these procedures, the 1985 Starion comes with a standard 5-year/50,000-mile limited warranty against rust-through.*

No aspect of driving has been overlooked in the design of the Starion. Careful attention to detail assures the highest levels of performance, comfort and value.

5/50

When it comes to innovative engineering, the 1985 Mitsubishi Starion is one powerfully sophisticated machine.



Dual power mirrors can be adjusted from the driver's seat.



*See warranty statement in specifications section.



Takes you where you want to be.™

