

CADILLAC
SEVILLE
1986



THE
CADILLAC PROMISE

Owning a Cadillac is a satisfying experience. The pleasures come in sometimes unexpected ways.

Such as appreciating the state-of-the-art electronics that serve one important function: to make your driving as carefree as you wish it to be.

Admiring contemporary road manners that tame the twists and turns...without compromising legendary Cadillac luxury and comfort.

The solid sound every time you close a door. The security of safety features that surround you mile after mile.

Above all, it's the feeling of uncompromising excellence. A tradition of quality and attention to driver and passenger needs and demands.

Is it any wonder driving a new Cadillac is a pleasure to be envied?



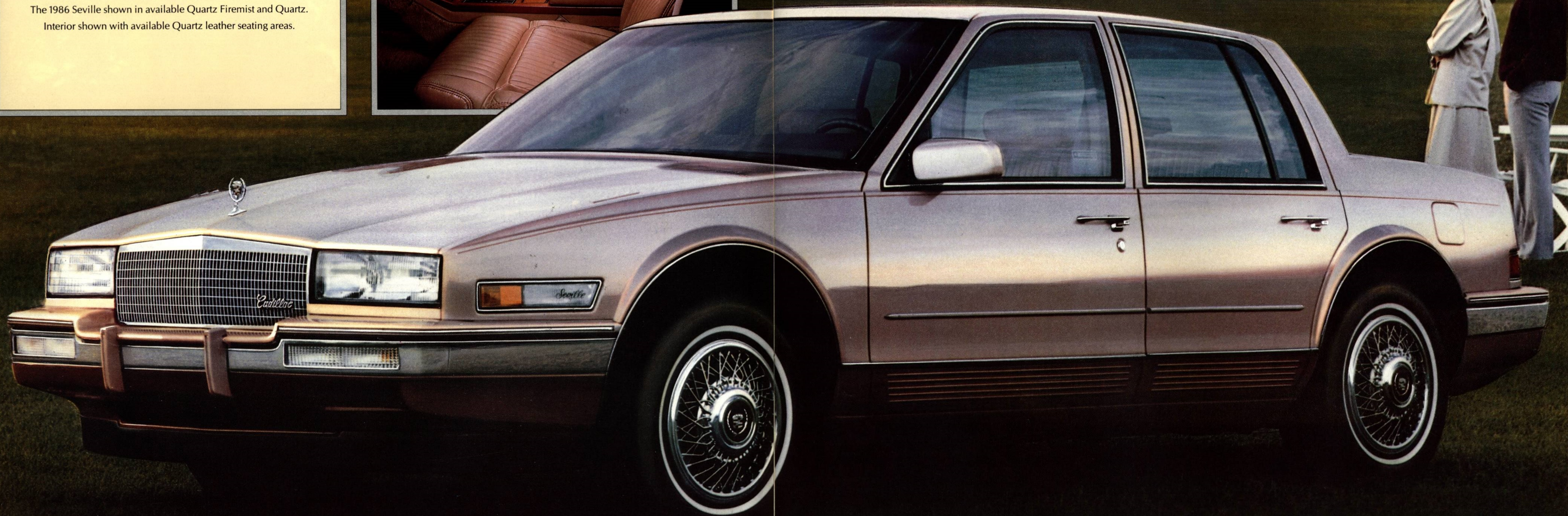
SEVILLE

You've never seen a Seville like this before. Its tailored, smooth-flowing lines are invitingly contemporary, yet its understated elegance remains strictly Seville.

Inside, Seville features new front bucket seats with luxurious cloth and leather trim.

And on the road, the 1986 Seville handles better than any Seville before it: taut, responsive, and confident.

The 1986 Seville shown in available Quartz Firemist and Quartz. Interior shown with available Quartz leather seating areas.



SEVILLE ELEGANTE

Elegante offers you the ultimate in Seville luxury and style.

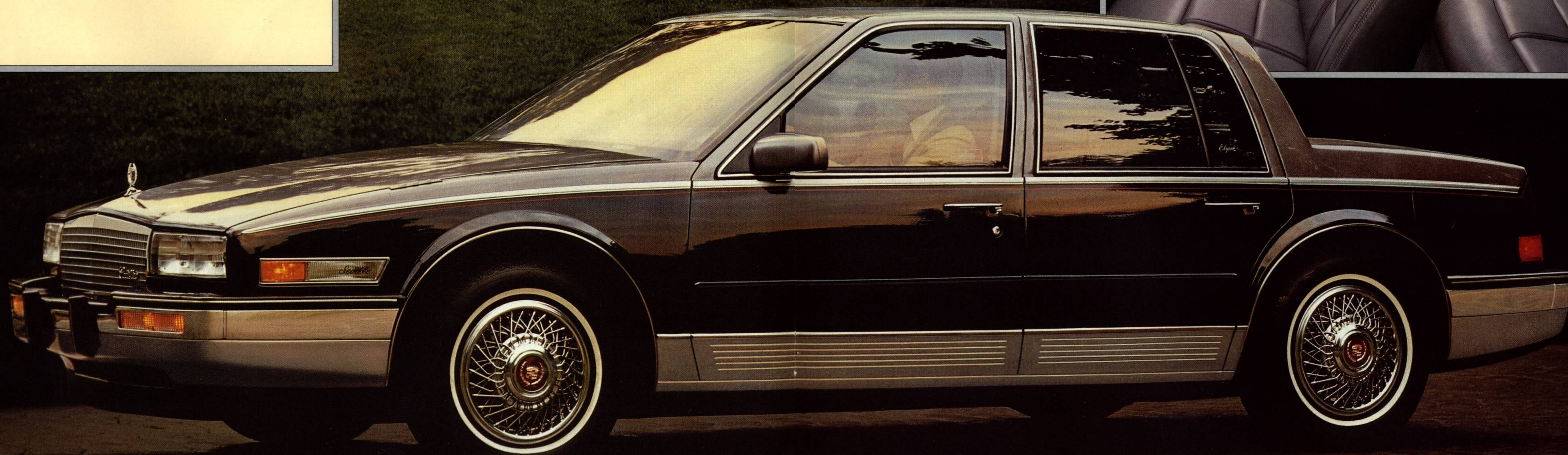
Driver and front passenger each have a six-way power seat adjuster, power seat recliner and power lumbar support adjuster.

On the outside, Elegante is distinguished by an exclusive mid-tone paint treatment that's complemented by an upper body accent moulding and wire wheel discs.

And, of course, Elegante offers the advanced electronics found on all Sevilles.

The 1986 Seville Elegante shown in Academy Gray and Sable Black.

Interior shown with available Gray leather seating areas.



SEVILLE STANDARD FEATURES

COMFORT AND CONVENIENCE

Driver Information Centre. Innovative electronic readout of outside temperature, fuel economy data and engine display data (including tachometer) and more.

Digital Instrument Cluster. Sophisticated, yet easy-to-read digital display of all primary driving information.

Retained Accessory Power. Allows you to operate many standard and available features up to 10 minutes after you turn off the ignition or until a door is opened, including the electrically powered windows, power trunk lid release, controlled cycle wipers, stereo radio and available Astrorooftop.

Body Computer Module. This precise digital control system provides enhanced function of body-related customer convenience items, including the electronic climate control, driver information centre and more.

Twilight Sentinel. Automatically turns headlamps on and off in response to outside lighting conditions. Time-delay feature lights your way as you leave your Seville.

Front Bucket Seats (Two-Passenger). With manual driver and passenger seat recliners.

New Front-Floor Console. Includes automatic transmission shift selector, fold-down armrest, two storage compartments, optional cassette storage, rotating cup holder, coin holder and more.

Electronic Climate Control.

Cruise Control.

Electrically Powered Windows and Door Locks.

Power Trunk Lid Release.

Leather-Trimmed, Tilt-and-Telescope Steering Wheel.

Electrically Powered Outside Rearview Mirrors (Car-Coloured).

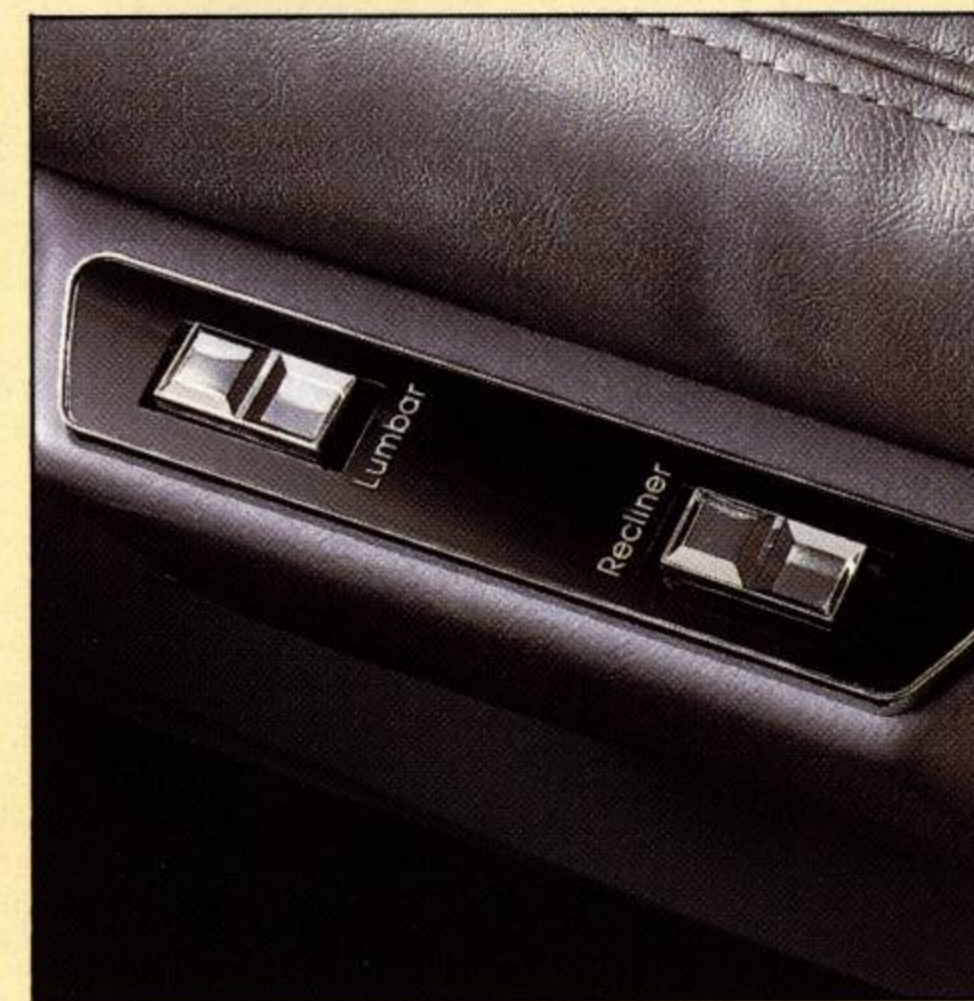
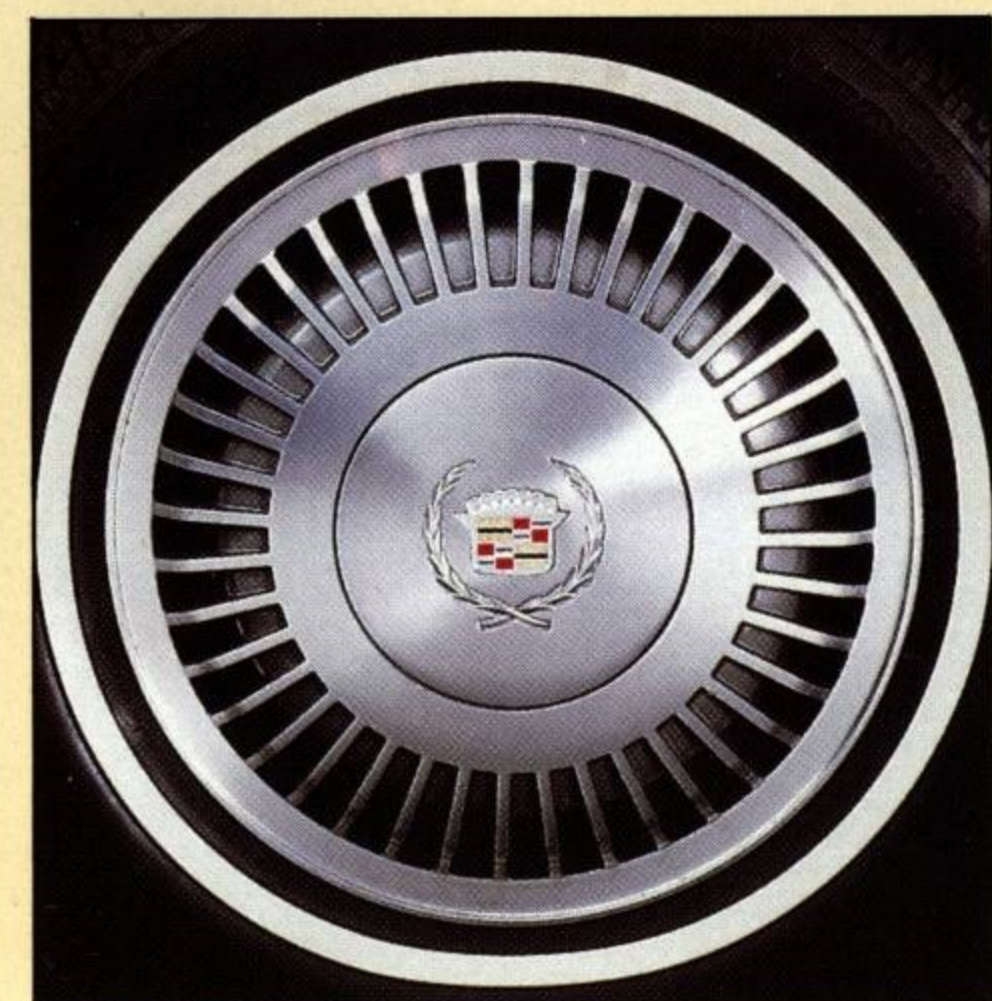
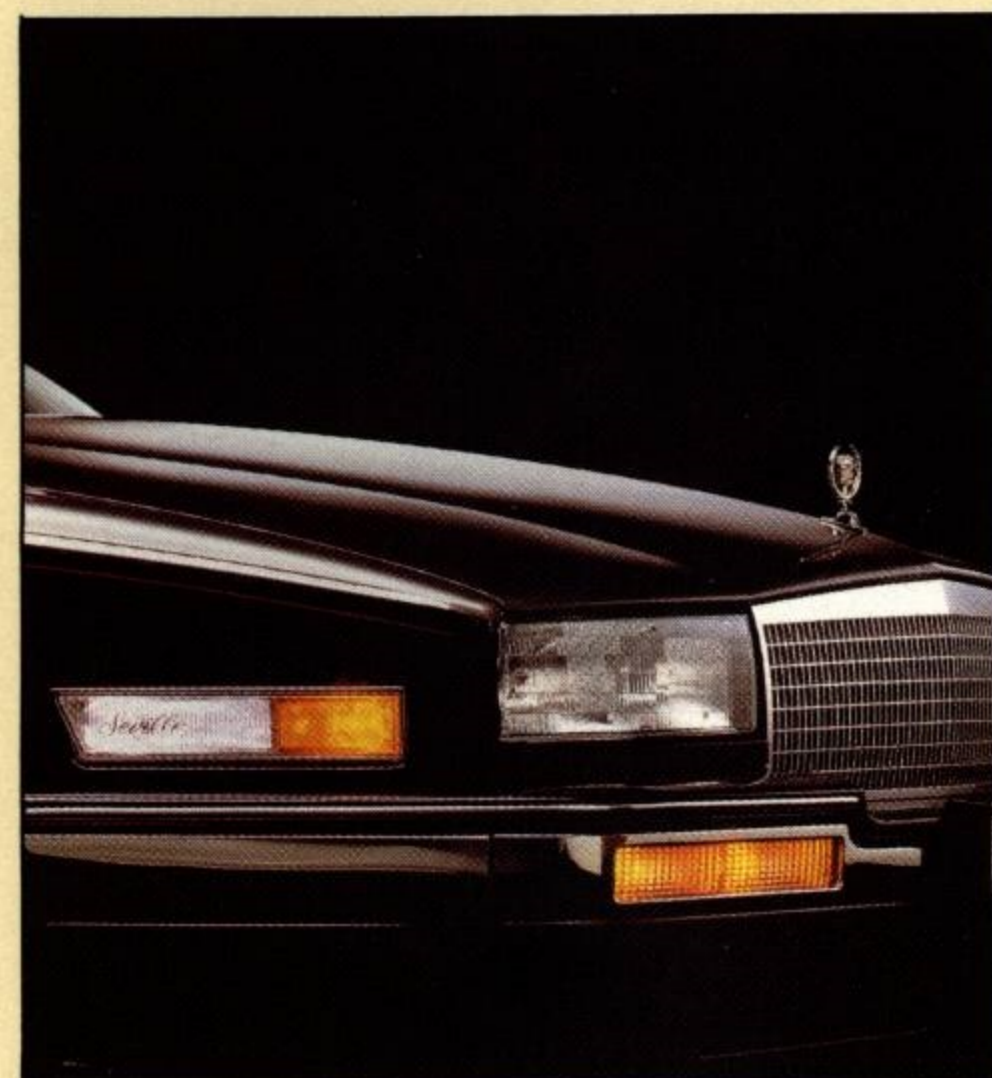
AS WELL AS:

- Front and Rear Centre Armrest
- Front Doors and Rear Quarters Armrest • One Front and Two Rear

Ash Receivers • Overhead Assist Handles • Headlights On, Key in Ignition, Safety Belt Audible Reminders • One Front and Two Rear Cigarette Lighters • Digital Display Clock (in Driver Information Centre) • Controlled Cycle Wiper System • Electric Rear Window Defroster,

• Interior Lights—Underhood, Glove Compartment (2), Front Ash Receiver, Instrument Panel Courtesy, Overhead Dual Map, Door Courtesy and Warning, Rear Reading (Prefocused), Sail Panel Courtesy, Luggage Compartment • Low Brake Fluid Warning Indicator • Low Windshield

Washer Fluid Level Indicator • Passenger Visor Vanity Mirror • Automatic Parking Brake Release • 2-Way Manual Seat Adjuster—Passenger Seat • 6-Way Power Seat Adjuster—Driver Seat • Soft-Ray Tinted Glass • Digital Trip Odometer • Padded Dual Sun Visors



Includes Heated Outside Mirrors • Front Side Window Defoggers • Digital Fuel Gauge • Door Pull Straps • Adjustable Front Seats Headrests • Front and Rear Lamp Monitors • Exterior Lights—Including Tungsten Halogen Front Cornering Lights and Tungsten Halogen Composite Headlamps

1 Tungsten Halogen Composite Headlamps and Front Cornering Lights; Front and Rear Lamp Monitors.

2 Digital Instrument Cluster and Leather-Wrapped Steering Wheel.

3 Genuine American Walnut Trim.

4 Aluminum Alloy Wheels.

5 Power Lumbar Support for driver and passenger on Elegante.

SOUND SYSTEM

Power Antenna.

AM/FM Stereo Radio with Signal Seeking and Scanner and Digital Display (ETR™).

APPEARANCE AND PROTECTION

Cadillac's 4-Year/80,000-kilometre (50,000-Mile) Limited Warranty. In some cases, a

deductible applies. See your dealer for details.

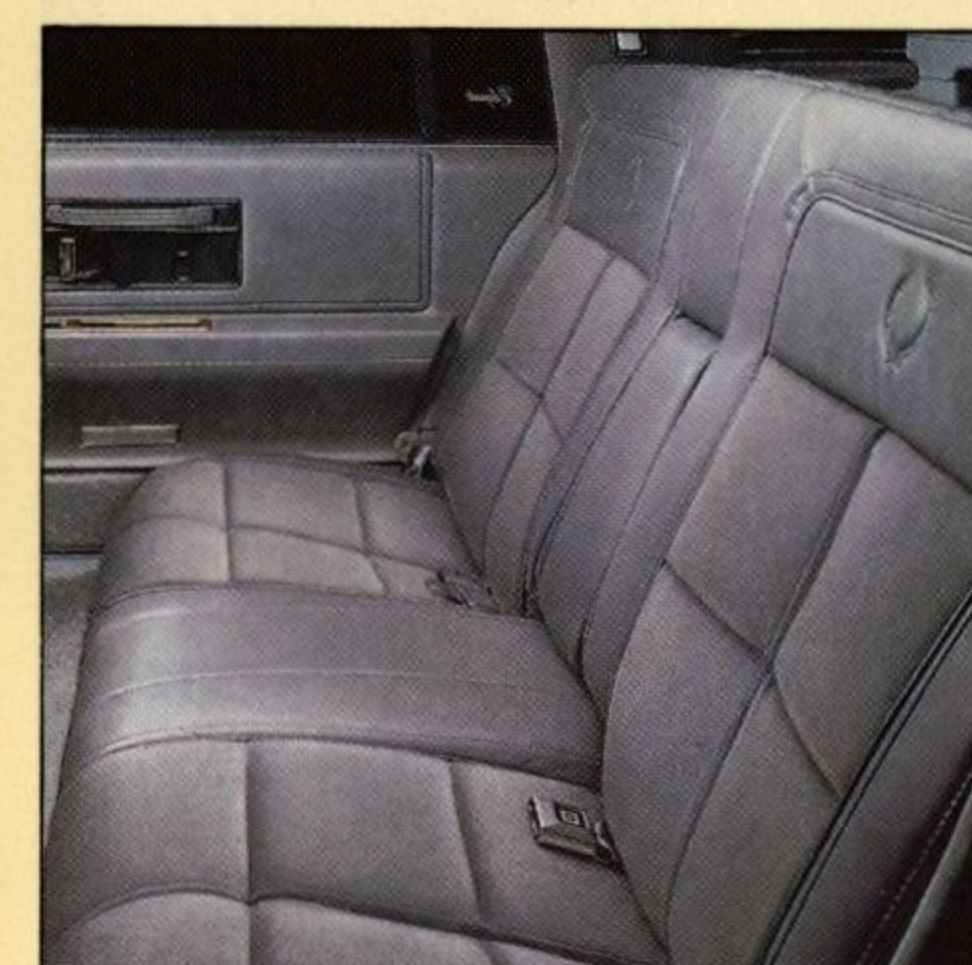
Two-Tone Paint Treatment. Specific two-tone combinations. Seville comes with a clearcoat finish.

New Cloth and Leather Combination Seating Areas.

Centre High-Mounted Stop Lamp.

AS WELL AS:

• Side and Deck Lid Accent Striping • Front and Integral Rear Bumper Guards • Front and Rear Bumper Rub Strip • Clearcoat Finish • Door Sill Plates • Mouldings—Including Body Side (Car-Colour), Rocker Panel, Wheel Opening • Compact High-Pressure Type Spare Tire • Spare



6 Exclusive new Front Centre-Floor Console.

7 Royal Prima Cloth and leather combination interior offered in four different colours.

8 Remote Trunk Lid Release and Electronic Level Control.



Tire Cover • Wreath and Crest Ornamentation.

ENGINE/CHASSIS:

4.1 Litre V8 DFI Gasoline Engine. This front-drive, transverse-mounted V8 is a Cadillac exclusive. Includes Digital Fuel Injection and On-Board Computer Diagnostics.

Independent Four-Wheel Suspension. MacPherson Struts in the front and all-new transverse fiberglass leaf rear suspension.

Four-Speed Automatic Transmission with Overdrive and Viscous Converter Clutch. A Cadillac exclusive, the Viscous Converter Clutch provides a silky drivetrain feel and automatically adjusts for altitude and outside temperature.

Front-Wheel Drive.

Power Four-Wheel Disc Brakes.

Electronic Level Control.

Power-Assisted Rack-and-Pinion Steering.

Aluminum Alloy Wheels.

AS WELL AS:

• Body-Frame Integral Construction • Delco-GM Freedom® III Battery • 120 Amp Generator • High-Energy Ignition • Steel-Belted All-Seasons Radial White Stripe Tires • Dynamic Wheel Balance • Computer Match-Mounted Wheels and Tires.

Additional Standard Features on Seville Elegante

COMFORT AND CONVENIENCE

New Power Lumbar Support Adjusters and Power Recliners for Front Bucket Seats.

New Six-Way Power Seat Adjuster for Front Passenger Bucket Seat.

Front Seatback Pockets.

APPEARANCE AND PROTECTION

New Genuine American Walnut Trim Plates on Instrument Panel and Doors.

New Mid-Tone Paint Treatment.

Wire Wheel Discs.

Special Elegante Interior Trim and Front Bucket Seats. With Mayfair Cloth and Sierra Grain Leather Combination Seating Areas.

AS WELL AS:

• Accent Moulding • Elegante Identification • Floor Carpet—Deluxe Tampico Carpeting • Front and Rear Floor Mats—Deluxe Reversible Tampico Carpeted.

SEVILLE AVAILABLE FEATURES

COMFORT AND CONVENIENCE

Cellular Telephone. This dealer-installed option may be the ultimate convenience you can add to your 1986 Seville. It features a removable handset concealed in the locking storage compartment in the front seat centre armrest. Also included is a hidden microphone mounted between the sun visors for hands-free operation. Plus an exclusive radio mute control which automatically decreases the volume of the radio through the rear speakers while the front radio speakers are used for the telephone.

Astrorooft. Glass panel can either be retracted or tilted up. Includes adjustable sunshade and air deflector. (Astrorooft reduces headroom slightly.) Note: See your dealer for availability date of the Astrorooft.

Dimming Sentinel. Automatically dims high-beam headlamps with approach of oncoming traffic, then returns headlamps to high-beam operation.

Automatic Day/Night Mirror. Automatically adjusts the rearview mirror to the non-glare mode.

Memory Seat. Remembers two preset driver's seat positions. Also includes an "exit" button which moves the seat all the way down and back. Available for Elegante.

AS WELL AS:

- Automatic Door Locks • Illuminated Entry System • Driver and Passenger Illuminated Vanity Mirrors • Power Recliner—Passenger Seat • Six-Way Power Passenger Seat Adjuster • Power Trunk Lid Pull-Down.

SOUND SYSTEMS

The driving pleasure of the new 1986 Cadillac is greatly enhanced by the Delco Electronics Sound Systems. These radios are designed with the same technology and expertise that are utilized in the design of body and engine computers, electronic climate control, theft-deterrent systems and many other automotive electronic devices.

This world-class audio technology provides the discriminating Cadillac owner the level of comfort and enjoyment expected when driving a Cadillac.

Delco-GM/Bose Symphony Sound System. Customized to the exact dimensions and acoustical characteristics of your Seville, this premium sound system combines one of Delco-GM's most sophisticated Electronically Tuned Receivers (ETR™) with Bose's patented Direct/Reflected sound reproduction design. Includes integral Cassette Tape Player.

Delco-GM Electronically Tuned Receiver with Cassette Tape Player. With AM Stereo* and Five-Band Graphic Equalizer.

APPEARANCE AND PROTECTION

Brushed and Bright Upper Accent Moulding. For an added touch of elegance.

Mid-Tone Paint Treatment. Features a primary colour for the hood, roof, deck lid and lower body, and a secondary colour for the midsection. A brushed and bright upper accent moulding is included with this paint treatment.

Security Option Package. Includes Illuminated Entry System, Remote Fuel Filler Door Lock, Automatic Door Locks and Theft-Deterrent System.

*This product receives Harris and C-Quam® AM stereo broadcasts. C-Quam is a registered trademark of Motorola, Inc.

AS WELL AS:

- Door Edge Guards • Front and/or Rear Reversible Carpeted Floor Mats • Front License Plate Mounting Provisions • Remote Release Fuel Filler Doors • Leather Seating Areas • Firemist Paint • Pearlmist Paint • Theft-Deterrent System • Trunk Carpeted • Wire Wheel discs.

ENGINE/CHASSIS

Touring Suspension. 15-inch Aluminum Alloy Wheels and Goodyear Eagle GT Low-Profile, High-Performance Tires (P215/60R-15 blackwalls

standard, white-stripe available), Rear Stabilizer Bar, Stiffer Front Stabilizer Bar and Specially Tuned Components comprise the Touring Suspension.

AS WELL AS:

- Engine Block Heater • Puncture Sealing Tires.



SPECIFICATIONS

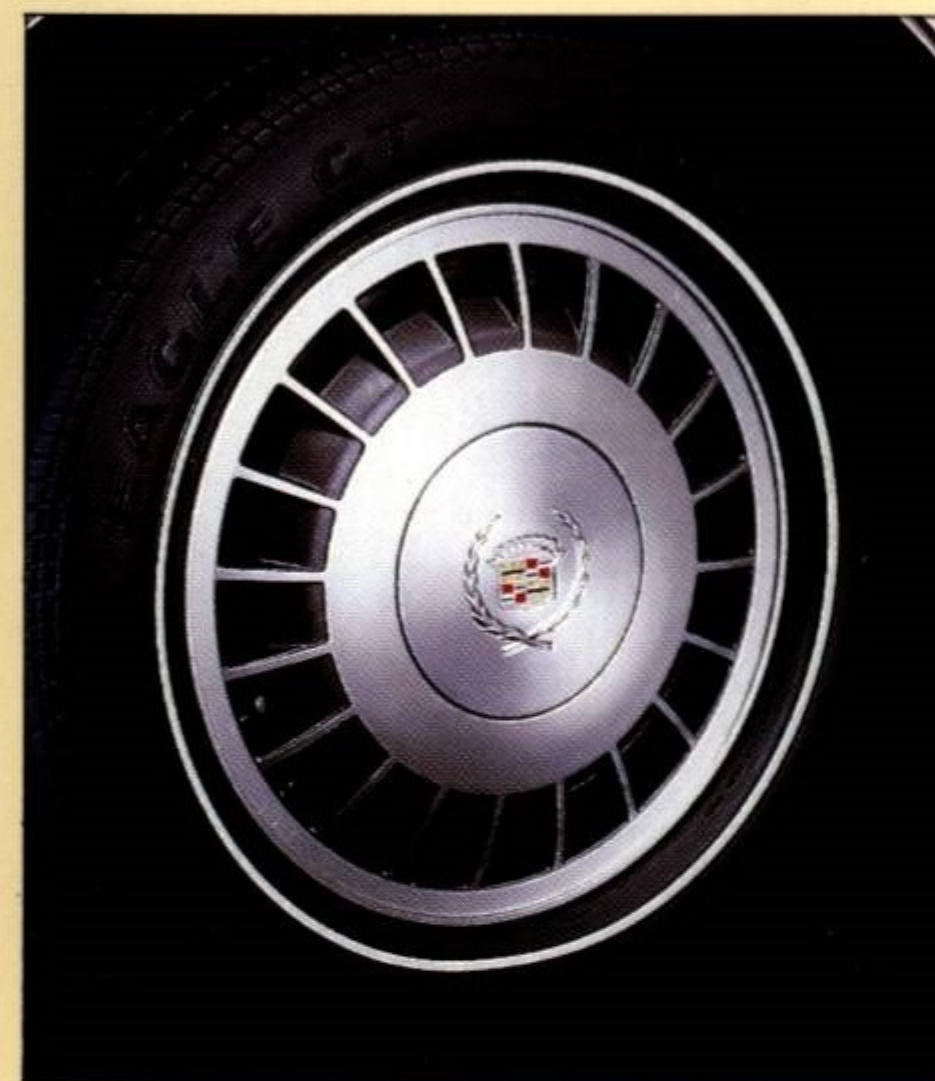
Engine	4.1 Litre V8 Gasoline Engine with Digital Fuel Injection	Standard
Horsepower	130 @ 4200 rpm	
Fuel Tank Capacity	68.1 Litres (15 gallons)	
Transmission	Four-speed automatic with overdrive and viscous converter clutch	
Final Drive Ratio	2.97:1 Effective	

Suspension	Front	Full Independent MacPherson Strut with Dual Path Mounts
	Rear	Independent, Isolated from Body
Springs	Front	Coil Shock Absorbers
	Rear	Single Transverse Fiberglass Shock Absorbers
Stabilizer Bar	Front	Pliacell, Integral in Strut
	Rear	Standard
Height Control		Electronic Level Control
Brakes	Front	Power Four-Wheel Vented Disc, Self-Adjusting, Zero Drag
	Rear	Power Four-Wheel Vented Disc, Self-Adjusting, Zero Drag

Parking Brake	Multistroke Foot Pedal with Vacuum Automatic Release
Action	Mechanical on Rear Brakes
Telltale Light	Indicates Hydraulic Malfunction, Low Vacuum or Parking Brake Applied
Linings	Audible Wear Indicators
Steering	Power Rack-and-Pinion
Gear Ratio	16.5:1

Wheels and Tires	GM Specification Steel-Belted All-Seasons Radial
Tires	White Stripe
Sidewall	P205/70R-14
Size	(P215/60R-15 with Touring Suspension)
Wheels	Aluminum Alloy 14" x 6" (15" x 5.5" with Touring Suspension)

Overall Sizes	Wheelbase	2743 mm (108.0")
	Overall Length	4780 mm (188.2")
	Overall Height	1365 mm (53.7")
	Body Width	1822 mm (71.7")
	Tread Width—Front	1522 mm (59.9")
	—Rear	1522 mm (59.9")
	Turning Diameter (wall-to-wall)	12.8 M (42.2")
Curb Weight	1554.2 kg (3426.4 lbs)	
Seating Capacity	2 front/3 rear	
Headroom Front	962 mm (37.9")	
Headroom Rear	962 mm (37.9")	
Legroom Front	1085 mm (42.7")	
Legroom Rear	906 mm (35.7")	
Hip Room Front	1410 mm (55.5")	
Hip Room Rear	1420 mm (55.9")	
Shoulder Room Front	1454 mm (57.2")	
Shoulder Room Rear	1454 mm (57.2")	



- 1 Power Astrorooft.
- 2 Illuminated Vanity Mirror.
- 3 15" Aluminum Alloy Wheel and Goodyear Eagle GT Tire.



While there are many service contracts available on the market today, there is only one which gives you an agreement directly with General Motors. It is the one with the GM Protection Plan logo shown above. This logo on all Plan material assures you that the service contract you are buying is the GM Plan, we believe the finest such program available to GM owners.

The GM Protection Plan provides additional protection during and after the new vehicle limited warranties. Ask your General Motors dealer for details and information about the genuine GM Protection Plan.

SAFETY FEATURES

Occupant Protection

• Manual Lap/Shoulder Safety Belts for Driver and Right Front Passenger (Driver Side Includes Visual and Audible Warning System) • Manual Lap Safety Belts at Each Rear Seat Position • Energy Absorbing Steering Column • Energy Absorbing Instrument Panel • Energy Absorbing Front Seat-back Tops • Inner Shield Windshield Glass and Tempered Safety Side and Rear Window Glass • Safety Interlocking Door Latches • Passenger-Guard Inside Door Lock Handles • Safety Armrests • Head Restraints, Driver and Right Front Passenger (Adjustable)

Accident Avoidance

• Side Marker Lights and Reflectors • Parking Lamps that Illuminate with Headlamps • Four-Way Hazard Warning Flasher • Back-Up Lights • Centre High Mounted Stop Lamp • Directional Signal Control with Lane Change Feature • Windshield Defroster, Washer and Controlled Cycle Wipers • Inside Rearview Mirror with Vinyl-Bonded Glass • Outside Left and Right Rearview Mirrors • Brake System with Dual Master Cylinder and Warning Light • Starter Safety Switch • Dual Action Hood Latch System • Low Glare finish on Instrument Panel Top, Inside Windshield Mouldings, Wiper Arms/Blades, Metallic Steering Wheel Surfaces • Illuminated Heater and Defroster Controls • Tires with Built-In Tread-Wear Indicators.

Theft Deterrent

• Audible Reminder for Ignition Key Removal • Theft Deterrent Steering Column Lock • Visible Vehicle Identification Number.

Available Theft Deterrence Feature

• Theft Deterrent System • Security Option Package.

FOR YOUR PROTECTION*

1. New Vehicle Limited Warranty—12 months of 20,000 kilometres, whichever comes first.
2. Major Assembly Coverage (1st Purchaser)—after expiration of basic coverage up to a total of 48 months or 80,000 kilometres whichever comes first on gasoline engine,

transaxle, front-wheel drive, engine cooling and fuel, steering, front suspension, brakes, factory-installed air conditioner, electrical, electronic instrument cluster† (\$100 deductible). 2nd Purchaser \$25 transfer fee required for unexpired portion of coverage.

3. Owner Assistance Program.
4. Special Policy Adjustment Program. *Ask your dealer for details. †Deductible does not apply.



5-year unlimited kilometres corrosion perforation warranty. On all 1986 GM passenger cars. Ask your dealer for details.

A WORD ABOUT ENGINES

Cadillacs are equipped with engines produced at facilities operated by GM car groups, subsidiaries or affiliated companies worldwide.

AWORDABOUTTHISCATALOGUE

The vehicles described in this catalogue incorporate components produced by General Motors of Canada Limited and related companies and suppliers. During manufacturing, different components than initially scheduled may be used.

All illustrations and specifications contained in this catalogue are based on the latest product information at time of publication approval. The right is reserved to make changes at any time, without notice, in prices, colours, materials, equipment, specifications and models, and to discontinue models. Some of the equipment shown or described throughout this catalogue is available at extra cost or can only be ordered in conjunction with the other optional equipment. Some options may not be available when your vehicle is built. Check with your dealer for complete information.

WHAT MAKES A
CADILLAC A CADILLAC



It all began in 1902. A commitment to quality and excellence. As a result, for the past 37 years, more car buyers in North America have chosen to own Cadillac than any other luxury car.

Today, that commitment remains obvious in such traditional areas as fit, finish, materials, appointments and craftsmanship.

But it now becomes evident, too, in state-of-the-art and leading-edge developments in safety and technology.

Traditional or advanced, however, the ultimate test of Cadillac quality and excellence is simply this: Does it contribute significantly to owner satisfaction?

That's what makes a Cadillac a Cadillac.

COMMITMENT TO
Excellence

General Motors recognizes that taking delivery of your new vehicle is a significant event. To ensure that your delivery experience contributes to your overall satisfaction, we have implemented a "Commitment to Excellence" Delivery Procedure.

This procedure includes a thorough new vehicle inspection by both the service technician and salesperson, a full tank of fuel, and a follow-up survey to determine your satisfaction with the delivery experience.

General Motors "Commitment to Excellence" is yet another excellent reason to "Look to GM Today".



Official Supplier
to The 1986
World Exposition



General Motors of Canada Limited
Oshawa, Ontario