

1986 Mitsubishi Cordia



Mitsubishi Ingenuity: Turning thought into technology.

Mitsubishi.

More than automobiles. A highly diverse group of companies on the cutting edge of advanced technology. Electronics. Optics. Metallurgy. Computers. Forty-two different companies. Ideas flowing back and forth.

Consider the Mitsubishi symbol: three diamonds. Each separate, standing alone. Yet touching, communicating, sharing a common center. As well as a common ideal.

Mitsubishi. Manufacturer of one of the world's most successful private jet aircraft.

Aerodynamic technology now being applied to automobiles. Mitsubishi electronics are arguably the most advanced available. Many were developed for Mitsubishi weather and communications satellites.

Turbocharging. Metallurgical and performance data from aircraft engines bring new levels of performance to cars. Lightweight parts result in quick response. Exciting performance. Without a proportionate increase in fuel consumption.



Now available on many models, from low-priced Mirage to top of the line Starion.

Dual Engine Stabilizers. Advanced research on engine vibration leads to counter-rotating shafts designed to minimize vibration before it leaves the engine. Now on most Mitsubishi models. Result: extraordinarily smooth ride. So good that Porsche licensed it to use on its 944 models.

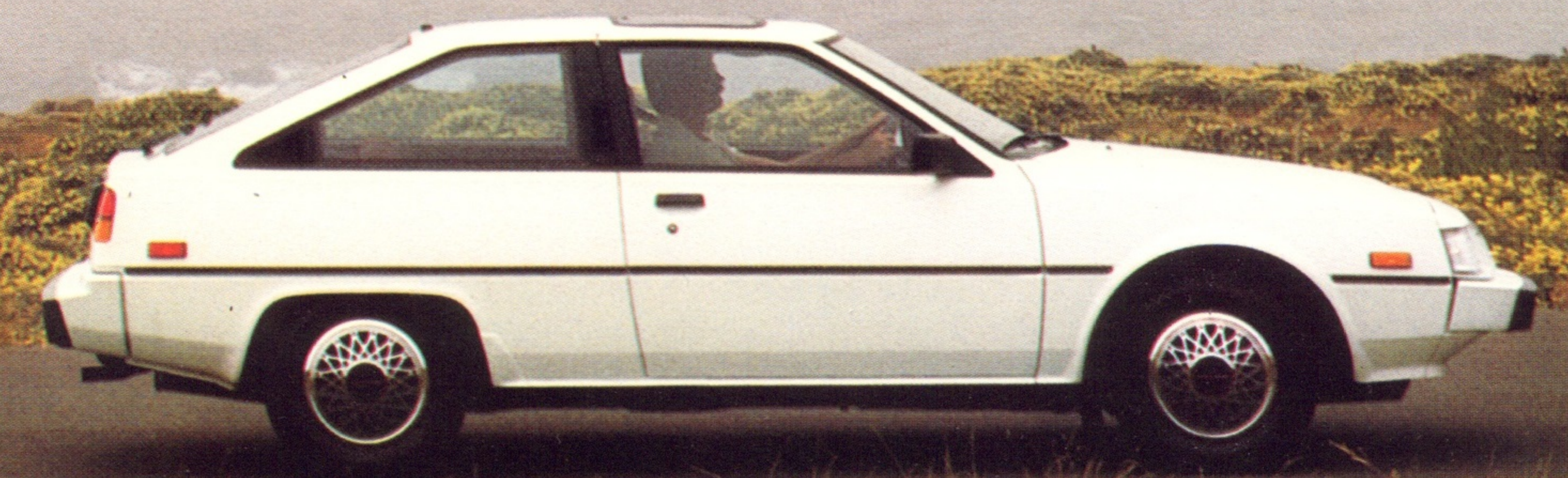
Electronic Ignition System. So ingenious it adjusts to

varying altitudes and temperatures.

MCA-Jet. combustion chamber. Mitsubishi engines have three valves instead of two. This design swirls the air/fuel mixture, making it burn more efficiently. And productively.

Ergonomics. The science of designing around the human body. Seats and headrests conform. Height-adjustable steering column.

We urge you to test drive the Mitsubishi of your choice. Once behind the wheel you will quickly understand why we say Mitsubishi takes you where you want to be.



Just your style.



Cordia L.

equipped with four-wheel independent suspension. With MacPherson struts, telescopic shocks and beefy stabilizer bars front and rear. Dual Engine Stabilizers,[™] patented by Mitsubishi Motors, are designed to minimize vibration for a more comfortable ride. And responsive power rack-and-pinion steering makes for excellent turning ability and outstanding road feel.

Mitsubishi Ingenuity sets the standards.

With the Cordia L, you get exceptional standard features you'd never expect for the price. Technical innovations like automatic valve lash adjusters that help save you money on service, because they never need adjusting. Automatic spark advance to make your Cordia L run better when you drive the car at higher altitudes. For fast starts and smooth performance, the Cordia L features the electronic fuel feedback carburetion system.



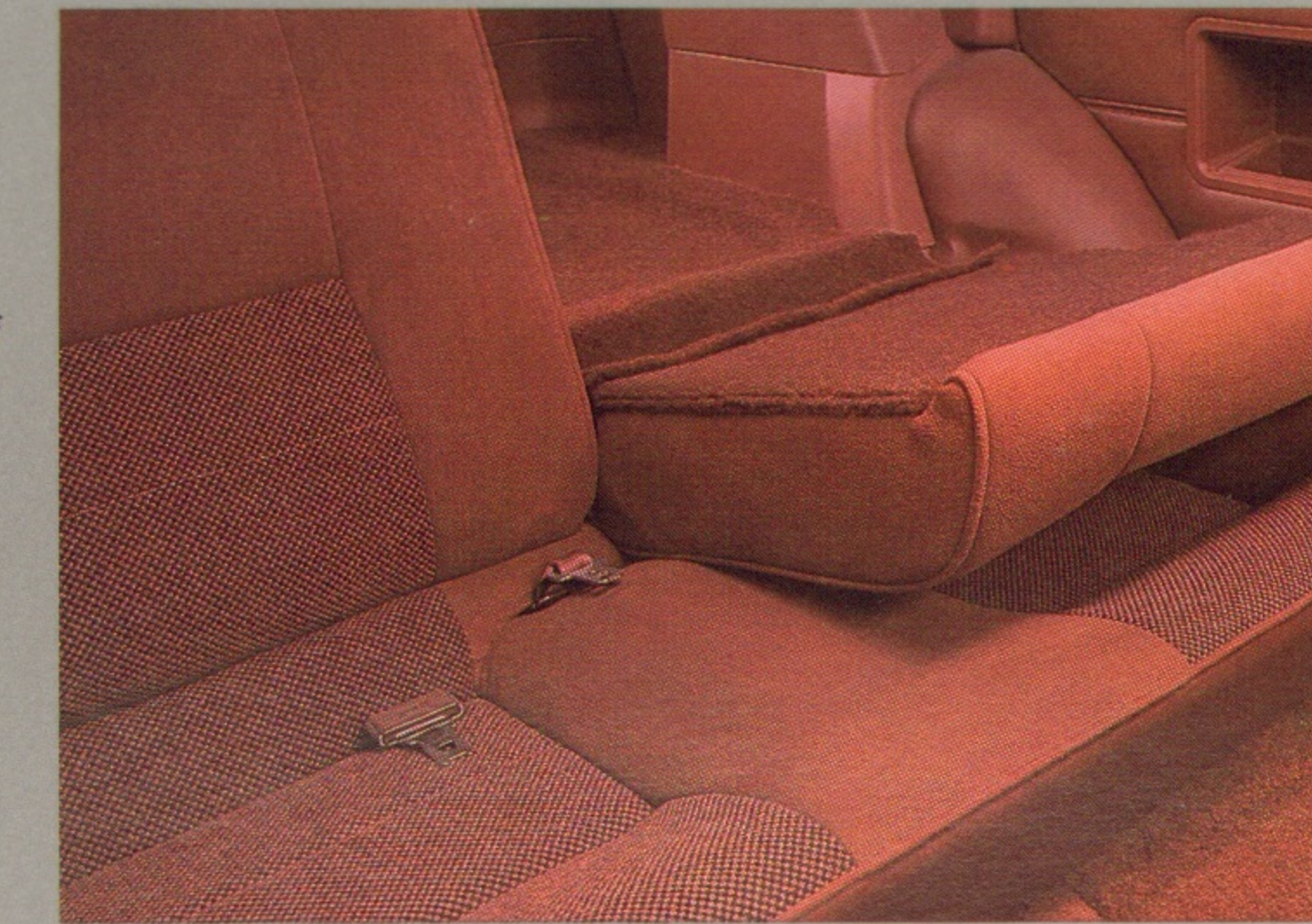
Optional 3-speed ELC[™] automatic can do the shifting for you.

Your Cordia L has power-assisted, ventilated front disc brakes and self-adjusting drum brakes at the rear. Responsive five-speed manual overdrive transmission. Plus two-speed windshield wipers with variable intermittent feature, so you're ready for all kinds of weather.

That's where Cordia's extensive anti-corrosion plan comes in. After precise welding, many body areas are injected with wax. Special sealing and priming are done to prevent water absorption. Then, the entire structure is immersed in our primer tank. And, specific areas are treated with even more

anti-corrosion materials and coating. All backed by a 5-year/50,000-mile limited warranty against rust-through.*

The inside story. Cordia's ergonomically designed front bucket seats with see-through headrests, and split fold-down rear seats are covered in rich tweed with handsome buckskin trim. Other standard Cordia features include thick, rich door-to-door carpeting, automatic cargo area light, convenient door-mounted map pockets and center storage console, passenger vanity mirror and remote-release levers for gas filler door and hatch release.



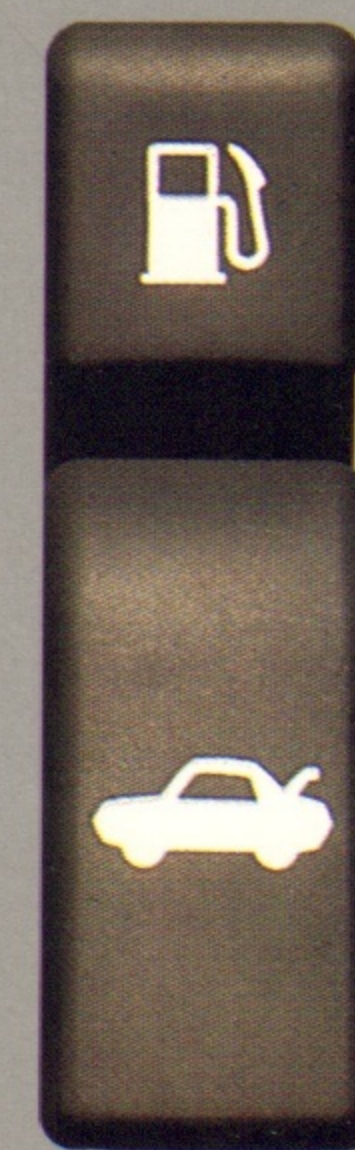
All Cordias feature a fold-down rear seat.

And, you can equip the Cordia L with optional all-season air conditioning.

What a difference an L makes. Cordia L features a powerful 2.0-liter MCA-Jet[™] engine. Available at your option is the smooth, three-speed ELC[™] automatic transmission.

Cordia L includes many other standard features which make it an outstanding value. Like AM/FM stereo radio and console-mounted cassette with five powerful speakers that surround you with sound. Plus handsome full wheel covers. And the rear stabilizer bar helps cut down on unwanted movement, so those steel radial tires can grip even better.

Cordia L's interior sports sumptuous comfort.



Open the hatch or fuel-filler door from the driver's seat.

The 1986 Cordia represents a stunning combination of style you want and versatility you need.

Its wind-tunnel designed shape slices through the wind to cut down resistance. Consider those new European-style, aerodynamic headlights, semi-concealed wipers, the aircraft-style doors and low-cut rear fender wells. It all adds up to a 0.34 coefficient of drag, one of the lowest wind-resistance figures on the road.

Cordia's front-wheel drive provides excellent traction, even in mud, snow and rain. It's also a more spacious ride, because Cordia's front-wheel drive reduces the center hump, giving passengers more room to stretch their legs.

For excellent handling, the Cordia is

Optional see-through sunroof lets the sun shine in.



*For complete details, see copy of warranty at your dealer.

Cordia Turbo. Just your speed.



Cordia Turbo gives you a good grip on your shifting.

The hot Cordia Turbo starts with all those standard features that make the Cordia L such an outstanding value, then keeps right on going. And fast.

It's powered by a turbocharged, fuel-injected 1.8-liter MCA-Jet™ engine. The three-valve combustion chamber design swirls the incoming air/fuel mixture, because it burns more efficiently that way.

The ECI™ electronically controlled fuel injection system uses data from a variety of sensors in its microcomputer decision-making process. It then delivers just the right amount of fuel and air the engine needs.

And what really sets this power plant apart from most other turbocharged engines is that the water-cooled turbo and motor were made



Rear wiper/washer is standard on Cordia Turbo.

for each other. This precise matching, along with moving parts that are remarkably lightweight, enable the engine to respond much more quickly than larger, heavier turbos. And the undesirable phenomenon known as "turbo lag" is virtually eliminated.

The Cordia Turbo's substantial power is channeled into the front-wheel drive system through a quick-shifting five-speed manual



Cordia Turbo

1986 Mitsubishi Cordia facts and figures.

overdrive transmission. So you have a gear for all reasons.

Lower your resistance. It's awfully hard to resist a Cordia Turbo.

And you don't want the wind resisting it too much, either. So extensive wind-tunnel testing and design have yielded an extremely slippery shape. From its overall smooth lines, to its aerodynamic headlights, to the color-keyed front air dam, side sill extensions and bold rear spoiler. They give this road-burning machine a drag coefficient of only 0.33, one of the lowest in the industry.

Not to mention some of the highest style you can find anywhere.

To help keep things running smoothly, the Cordia Turbo has a turbo-tuned, four-wheel independent suspension system.

With MacPherson struts. Firm springs and shock damping. And beefy stabilizer bars front and rear. Stopping is provided by big, power-assisted and ventilated disc brakes up front and self-adjusting drums in back.

It all rolls on high-performance, 60-series radial tires for excellent handling, traction and balance. Mounted on some of the most striking cast-alloy, machined-surface wheels you've ever seen.

Inside the power structure. Climb into the Cordia Turbo's cockpit, and get ready for some exciting action. The ergonomically designed bucket seats, upholstered in handsome tweed and buckskin knit, can fully recline. In back, split fold-down rear seats give you plenty of room and versatility.

Ergonomic bucket seats provide comfort and support.



Instrument panel includes a boost gauge to monitor Turbo activity.

Full analog instrumentation keeps you apprised of all vital functions. Tachometer. Coolant temperature gauge. Oil pressure gauge. Even a boost

gauge to monitor turbo operation. And a digital quartz clock to measure your good times.

The list of amenities for your comfort and convenience goes on. There's cruise control for open-road driving with less fatigue. Map pockets and a center console to store your things in. Two-speed windshield wiper/washer system with variable intermittent function, to handle a variety of weather conditions.

Finally, to make your Cordia Turbo even more of a blast, you can turn up the volume on the AM/FM cassette stereo system and listen to five high-fidelity speakers full of sound.

Cordia Turbo. It takes you where you want to be. And boosts your driving pleasure while you're at it.



Features & Options

	CORDIA L	CORDIA TURBO
DRIVETRAIN		
2.0-liter, 88-hp engine	●	●
1.8-liter, 116-hp turbocharged engine		●
5-speed manual overdrive transmission	●	●
3-speed ELC™ automatic transmission	●	●
MECHANICAL/FUNCTIONAL		
Full wheel covers	●	●
Aluminum alloy wheels (machined surface)	●	●
P185/70R13 all-season radial tires, BSW	●	●
195/60HR14 high-performance radial tires, BSW		●
Power-assisted ventilated front disc brakes	●	●
Self-adjusting rear drum brakes	●	●
Water-cooled turbine bearing housing	●	●
Automatic valve lash adjusters	●	●
Dual b-level heating/ventilation system w/4-speed fan	●	●
Air conditioning	●	●
Height-adjustable steering column	●	●
Power-assisted rack-and-pinion steering	●	●
5-year/50,000-mile Anti-Corrosion Perforation Limited Warranty*	●	●
EXTERIOR		
Air dam		●
Sidesill extension		●
Rear spoiler		●
Halogen headlights	●	●
Tinted glass	●	●
Dark upper windshield band	●	●
Sunroof	●	●
Rear window wiper/washer	●	●
High-mounted rear stop lamp	●	●
INTERIOR		
2-speed wiper/washer	●	●
Variable intermittent wiper feature	●	●
Remote hood release	●	●
Remote trunk/hood, fuel filler openers	●	●
Manual remote-control dual mirrors	●	●
Passenger's visor vanity mirror	●	●
Passenger assist grip	●	●
Analog instrumentation	●	●
Cruise control	●	●
Tachometer	●	●
Tripmeter	●	●
Coolant temperature gauge	●	●
Oil pressure gauge	●	●
Voltmeter	●	●
Turbo boost gauge	●	●
Digital quartz clock	●	●
5-speaker AM/FM stereo radio + console-mounted cassette	●	●
ETR AM/FM stereo radio + console-mounted cassette	●	●
ETR AM/FM stereo radio + cassette + graphic equalizer	●	●
Reclining low-back front bucket seats w/see-through headrests	●	●
Door map pockets	●	●
Center console	●	●
Split fold-down rear seat	●	●
Rear cargo cover	●	●
Rear window defogger	●	●
EXTERIOR COLORS/INTERIOR TRIMS		
Rocky White/Dark Red	●	●
California Red/Dark Gray	●	●
Bright Silver Metallic/Dark Red	●	●
Red Metallic/Dark Gray	●	●

Technical data, features, options and other equipment shown in this catalog are based on the latest available information at the time of printing and are subject to change without notice. Some vehicles are shown with optional equipment. For further information on the additional options and accessories, contact your Mitsubishi Motors Dealer. Availability at dealers of vehicles with specific features may vary. Headlights, parking lights and fog lights on vehicles lighted for illustration purposes only.

Call 1-800-447-4700 for your nearest Mitsubishi Motors Dealer. Part #MMSA-ADV-5013. Litho in U.S.A. © 1985 Mitsubishi Motor Sales of America, Inc.

Features & Options, continued

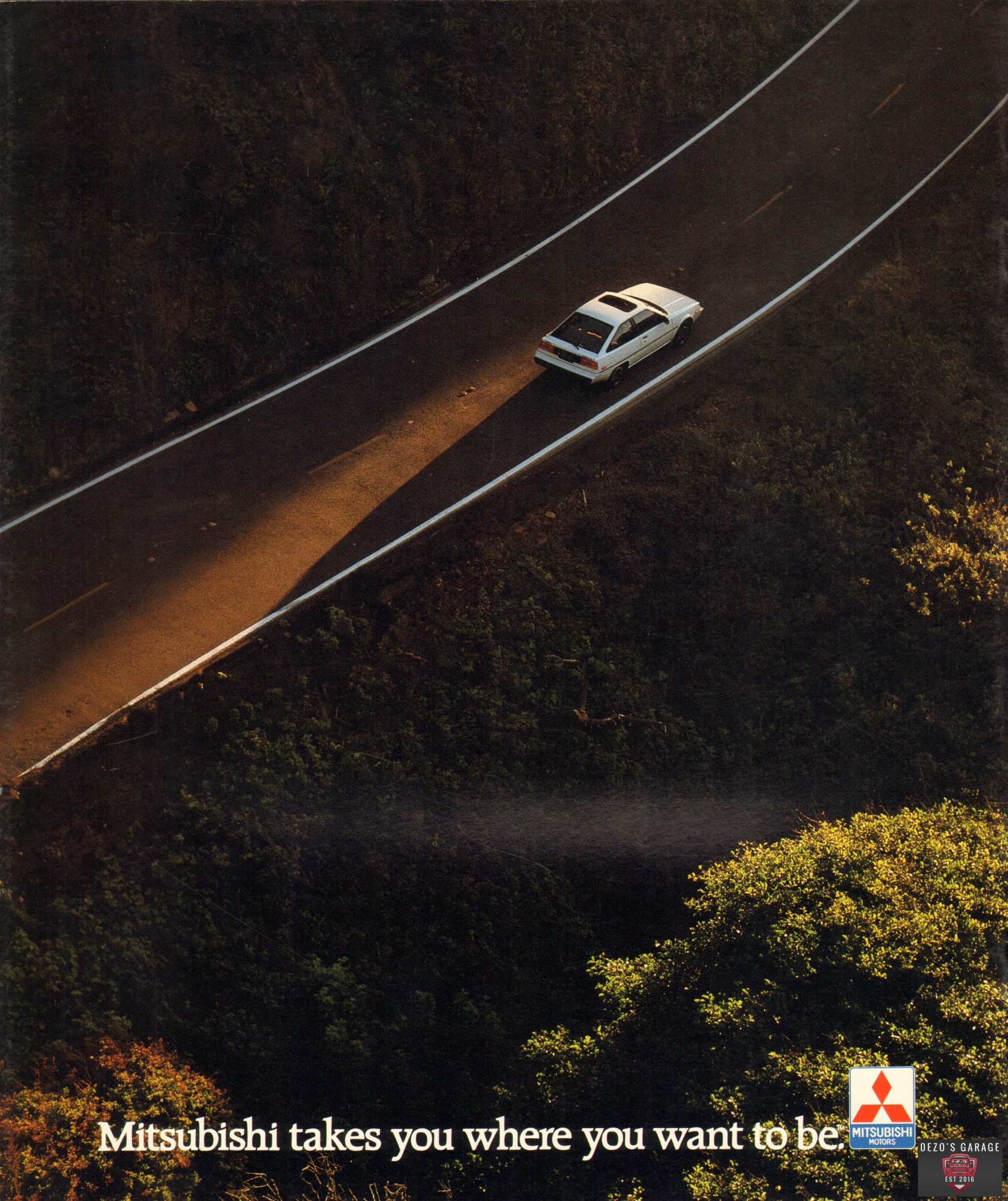
	CORDIA L	CORDIA TURBO
EXTERIOR COLORS/INTERIOR TRIMS, CONTINUED		
Selvia Black/Dark Gray		●
Obsidian Metallic/Kaiser Silver Metallic/Dark Red	●	●
ACCESSORIES		
Nose mask	●	●
Shade kit	●	●
Mudguards	●	●
Wheel arch moldings	●	●
Floor mats	●	●

Specifications

	2.0	1.8 TURBO	
ENGINE			
Model designation	G63B	G62B w/Turbo	
No. cylinders, layout	4-cyl., inline	4-cyl., inline	
Bore x stroke, mm	85x88	80.6x88	
in.	3.35x3.46	3.17x3.46	
Displacement, cc	1997	1795	
Cu. in.	122	109	
Compression ratio	8.5:1	7.5:1	
Fuel system	1-2V	fuel injection	
Horsepower @ rpm	88 at 5000	116 at 5500	
Torque @ rpm, ft.-lbs.	108 at 3000	129 at 3000	
<small>Engine features include: Single overhead camshaft, dual engine stabilizers, MCA-Jet™ combustion chamber design, electronic fuel feedback carburetion system (non-turbo engine), automatic valve lash adjusters, Turbocharger with ECI fuel injection, water-cooled turbine bearing housing (turbo engine), Emission control system: EGR, air induction, 3-way catalyst w/feedback control.</small>			
CLUTCH			
Clutch type:	Single-plate, dry		
Diameter, in.	7.9		
TRANSMISSIONS			
Applications	Cordia L, Turbo	Cordia L	
Gearbox Ratios:			
1st	4.226:1	2.846:1	
2nd	2.365:1	1.581:1	
3rd	1.467:1	1.000:1	
4th	1.105:1		
5th	0.855:1		
Reverse	4.109:1	2.176:1	
Max. ratio at stall		2.170:1	
Final Drive Ratio:			
w/2.0-liter engine	3.187:1	3.187:1	
w/1.8-liter Turbo engine	3.466:1		
SUSPENSION			
<small>Front suspension: Independent with struts, coil springs, telescopic shock absorbers, 0.87-in. stabilizer bar (Cordia L), 1.02-in. (Turbo)</small>			
<small>Rear suspension: Independent with trailing arms, coil springs, telescopic shock absorbers, 0.57-in. stabilizer bar (Cordia L, Turbo)</small>			
DIMENSIONS—in./mm.			
Wheelbase	96.3/2445		
Overall Length	173.0/4395		
Width	65.4/1660		
Height	49.4/1255		
Track, front	55.5/1410		
Rear	54.1/1375		
Head Room, front	36.8/935		
Rear	35.6/905		
Shoulder Room, front	52.8/1340		
Rear	50.0/1270		
LEG ROOM, REAR			
Leg Room, Front	41.3/1050		
Rear	30.3/770		
HIP ROOM, FRONT			
Hip Room, Front	53.5/1360		
Rear	52.0/1320		
STEERING			
Type	Rack-and-pinion		
Power assist	Standard		
Ratio, Power	16.8		
Turns, Lock-to-Lock	2.9		
Turning Circle, curb-to-curb, ft.	32.2		
BRAKES			
Type, front	Ventilated disc		
Power assist	Standard		
Diameter, in.	9.5; turbo: 10.4		
Type, rear	Self-adjusting drum		
Diameter, in.	8.0		
Total swept area, sq. in., non-turbo/Turbo	246/268		
ELECTRICAL SYSTEM			
Battery	12-V, maint.-free		
Ignition system	Transistorized		
Alternator rating, amps.	65		
FUEL SYSTEM			
Type fuel required	Unleaded		
Fuel pump type: 2.0 engine	Mechanical		
1.8 Turbo engine	Electrical		
Fuel tank capacity, U.S. gal.	12.8		
WHEELS & TIRES			
Wheel Size, Cordia L	13x5J		
Turbo	14x5.5J		
Type, Cordia L	Steel disc		
Turbo	Aluminum alloy		
Tire Size, Cordia L	P185/70R13		
Turbo	195/60HR14		
Spare Tire Type & Size: Cordia L, Turbo	Temp. T115/70D14, T125/70D15		
CURB WEIGHTS—lbs./kg.			
Cordia L w/5M	2337/1060		
w/3A	2370/1075		
Turbo w/5M	2458/1115		
FUEL ECONOMY FIGURES**			
Model	engine/trans	Est. city/hwy	
Cordia L	2.0/5M	25/32	
Cordia L	2.0/3A	24/26	
Cordia Turbo	1.8T/5M	22/28	

*For complete details, see copy of warranty at your dealer.

**These figures are estimates only, provided by the U.S. Environmental Protection Agency.



Mitsubishi takes you where you want to be.



DEZO'S GARAGE

EST 2016