

1987 MITSUBISHI CARS AND TRUCKS



PERFECTING THE STARION SENSATION

Cars reflect the personality of their maker in bold and subtle ways. Case in point, the Mitsubishi Starion ESI-R.

Boldly, it proclaims its sports car status, race-bred in world competition, reflecting Mitsubishi's commitment to innovative technology.

Control comes from 4-wheel independent suspension, teamed up with gas filled struts, stabilizer bars, a sophisticated Rear Brake Lock-Up Control™ system, 4-wheel vented disc brakes and a responsive 5-speed transmission.

Luxurious comfort comes from 6-way adjustable seats, a fully automatic temperature control system, and AM stereo/FM stereo cassette system with six controls mounted in the steering wheel hub so you don't have to take your eyes from the road.



Drop your hand from the wheel and it naturally falls on the smooth-shifting, 5-speed manual overdrive transmission shift lever.

A glance is all you need to see the large, quick-read speedometer and tachometer. A turbo boost gauge is centered in the panel flanked by voltmeter, oil pressure, coolant temperature

and fuel level gauges.

The ESI-R's commanding power comes from a high output, 176-horsepower, 2.6-liter, intercooled turbo-charged, 4-cylinder engine which launches the Starion from 0 to 50 in 5.9 seconds.*

To hook that impressive power up with the road, the ESI-R's front and rear independent suspension geometry has been designed to improve traction under acceleration and cornering, reduce brake

dive, and fully exploit the grip of its staggered V-rated radial tires.

New this year, are a theft deterrent system that sounds an alarm and prevents the engine from starting if anyone enters without a key, and a convenient passive restraint system.

The Starion ESI-R and luxurious LE model... two driving sensations.

*Compiled using a professional test driver.



STARION ESI-R

THE GALANT DRIVING EXPERIENCE

Imagine the sensation of driving a car whose suspension automatically adjusts to road conditions, whose steering effort can be adjusted, or lets you enjoy the exhilaration of a new 5-speed overdrive transmission that can effortlessly move you from 0 to 50 in just 7.6 seconds.*

Mitsubishi's Galant, a technologically sophisticated, front-wheel drive, 5-passenger luxury sedan is just such a car.

The ECS™ Electronically-Controlled Suspension is considered one of the most advanced suspension systems available. It's brilliantly engineered to reduce brake dive during sudden braking, stabilize body roll during sharp cornering, neu-



tralize the bump of uneven roads, and enhance overall control during spirited driving.

Equally sophisticated is the EPS™ Electronic Power Steering system that lets you control the degree of power assist with the flick of a switch. A special SPORT setting lets you lock into the minimum assist mode for improved road feel

at any vehicle speed.

A powerful, electronically-controlled fuel injected 2.4-liter engine is unique because of patented, innovative Dual Engine Stabilizers™ that dramatically decrease engine vibration helping to achieve Galant's luxuriously smooth ride.

A remarkable list of standard features

includes power remote side-view mirrors with defrosters, reclining seats... both front and rear, air conditioning, a theft deterrent system, full instrumentation, power steering and brakes, even cruise control.

Galant is a dramatic example of how Mitsubishi engineering has perfected the driving experience.

*Compiled using a professional test driver.



GALANT WITH ECS™ SUSPENSION SYSTEM

HOW TO IMPROVE UPON A GOOD IDEA

We call it "Perfecting the Experience.™" And what that means, simply, is making the most of a good idea.

Such is the case with the new Mitsubishi Wagon.

Every detail—from the child safety door locks to the helpful courtesy dome spot lamps in the rear cabin—has been thoughtfully engineered to add to your driving convenience, comfort and satisfaction.

The spacious interior has room for all the possibilities. In fact, it's more like a well appointed family room. That is if you can find a family room with luxurious bucket seats with armrests, that make



the drive relaxing and comfortable. And recline for nap time... swivel for a full 360° for face to face conversation... and slide back and forth for more leg room. Yes, they are unique.

And the reclining bench seat that backs them up is no slouch, either. It folds forward or fully reclines flat. Or

comes out altogether—with the flip of a lever—for maximum in cargo carrying.

The smooth, responsive performance comes from an electronically fuel-injected 2.4 liter overhead cam engine with patented Dual Engine Stabilizers™ and a standard 4-speed automatic overdrive transmission.

For extra peace of mind, there are sensors that tell you if your oil or coolant levels are low. A maintenance-free battery. And spark plugs that are designed to last up to 60,000 miles.

And it all comes together in one, trim aerodynamic package. The new Mitsubishi Wagon.



WAGON WITH LS PACKAGE

A SENSATIONAL FAMILY SEDAN

The Mitsubishi Tredia makes the point that family sedans don't have to be spartan and austere. For proof, each Tredia, from the high performance

Tredia Turbo, to the luxurious Tredia L with LS package, to the practical Tredia L, come with an extra long list of standard features.

Whichever Tredia you order, you can be sure that Mitsubishi's advanced technology and thoughtfulness will add to the pleasure of owning it, every time you drive.



TREDIA L WITH LS PACKAGE

HAS THE POWER TO IMPRESS

The Mitsubishi Cordia Turbo is the inexpensive way to have performance car fun.

To great style and comfort Mitsubishi added a responsive turbo-charged 1.8-liter engine teamed up with a 5-speed manual transmission. Result:

0 to 50 in 6.4 very quick seconds.*

The reclining front seats have high side bolsters to support you through twisty turns.

A long list of standard features includes aluminum alloy wheels, power steering and brakes, sport steering

wheel, adjustable steering column, remote hatch and fuel filler door release, rear window defroster and AM/FM stereo/cassette with 5-speakers.

Cordia Turbo and sporty Cordia L... performance value at its finest.

*Compiled using a professional test driver.



CORDIA TURBO

EFFICIENCY AND VERSATILITY REDEFINED

This is the year that families get in on the fun. Thanks to Mitsubishi's brand new Mirage 4-Door Sedan, you can get Mirage's crisp, responsive handling, handsome styling, and economical ways in a car sized with the family in mind.

Mirage's sparkling driving sensation

comes from a transverse-mounted 1.5-liter, single overhead cam, 4-cylinder engine, teamed up with a specially engineered, short-throw 5-speed manual overdrive transmission, or optional 3-speed automatic.

Reclining bucket seats in front and a

comfortable split fold down bench seat in back, still leave room for a generous 10.9 cubic foot trunk.

Mirage 4-Door, Mirage L and Mirage mean dramatic styling and comfort in an economical package.



MIRAGE 4-DOOR

The trademark Mirage is used with the consent of Grand Touring Cars, Inc., Scottsdale, Arizona.

TURBO POWER JUST FOR THE FUN OF IT

Enthusiasts call it a "Pocket Rocket" and a "Commuter Scooter" . . . a car for having fun, for commuting to work with a smile . . . for driving just to be driving.

A 105-hp, electronically fuel injected/turbocharged 1.6-liter engine pulls the Mirage from 0 to 50 in 6.2

seconds.*

The suspension is fully independent, with large diameter stabilizer bars, front and rear, high performance Yokohama 60-series radial tires and vented, power assist front disc brakes.

Full instrumentation, sport bucket

seats with firm bolstering at all the right places to keep you in place during spirited driving, and much more all add to your driving enjoyment.

If you take your fun seriously, consider Mirage Turbo.

*Compiled using a professional test driver.



MIRAGE TURBO

The trademark Mirage is used with the consent of Grand Touring Cars, Inc., Scottsdale, Arizona.

AN INEXPENSIVE LESSON

Let's begin with this scenario. You'd like to buy a new car. You don't know a lot about cars, but you do know you want the best possible buy. Sound familiar? Then keep reading.

You'll be pleased to learn the front wheel drive Precis, imported by

Mitsubishi and your Mitsubishi Motors Dealer's lowest priced model, comes with over 60 standard features.

Including low-back, reclining front bucket seats, a split fold down rear seat, variable intermittent front wipers, side window defoggers, remote hood release,

electric rear window defroster, locking fuel-filler door, low fuel warning light and many more.

The Precis 3-Door hatchback. It's for people who do their homework. And won't settle for less than their money's worth.



PRECIS. Imported by Mitsubishi

EXCEPTIONAL YES. EXPENSIVE NO.

The Precis LS is truly exceptional. As a matter of fact, when you consider the LS offers only five optional features, you'll find the best things in Precis are standard.

The 3-Door and 5-Door Precis LS come with a spacious, 5-passenger interior, with plush full fabric upholstery,

cloth door inserts, color-keyed cloth headliner, and rich color-keyed cut pile carpeting.

The reclining, low-back front bucket seats have two-way adjustable headrests, and the driver's seat also has height and lumbar adjustments for driving comfort.

In all, you'll find a multitude of comfort and convenience features on the Precis LS.

The Precis LS. It comes with more of what you want, for less than you thought you'd pay.



PRECIS LS. Imported by Mitsubishi

BREAKING NEW GROUND

The Mitsubishi SPX 4WD bridges the gap between off-road performance and on-road comfort, with a distinctive new look and sophisticated engineering.

The style is rugged. New flared fenders and attractive bright bumper, grille and trim, wide bodyside molding and spoker-type wheels.

Inside cloth upholstered high back, contoured reclining bucket seats ensure comfort and support on road or off.

SPX or Mighty Max 4WD, the perfect way to have off-roading fun.



4-WHEEL DRIVE SPX

A GREAT NEW SPORT

Pound for pound, feature for feature, the Mighty Max Sport is the biggest value around. Stylish... with a new aggressive sport look, enhanced by wide bodyside moldings, striking spoker-styled wheels, sport mirrors and a chrome front bumper and grille. A chrome rear step bumper and sport accent striping make the Mighty Max Sport stand out wherever trucks gather.

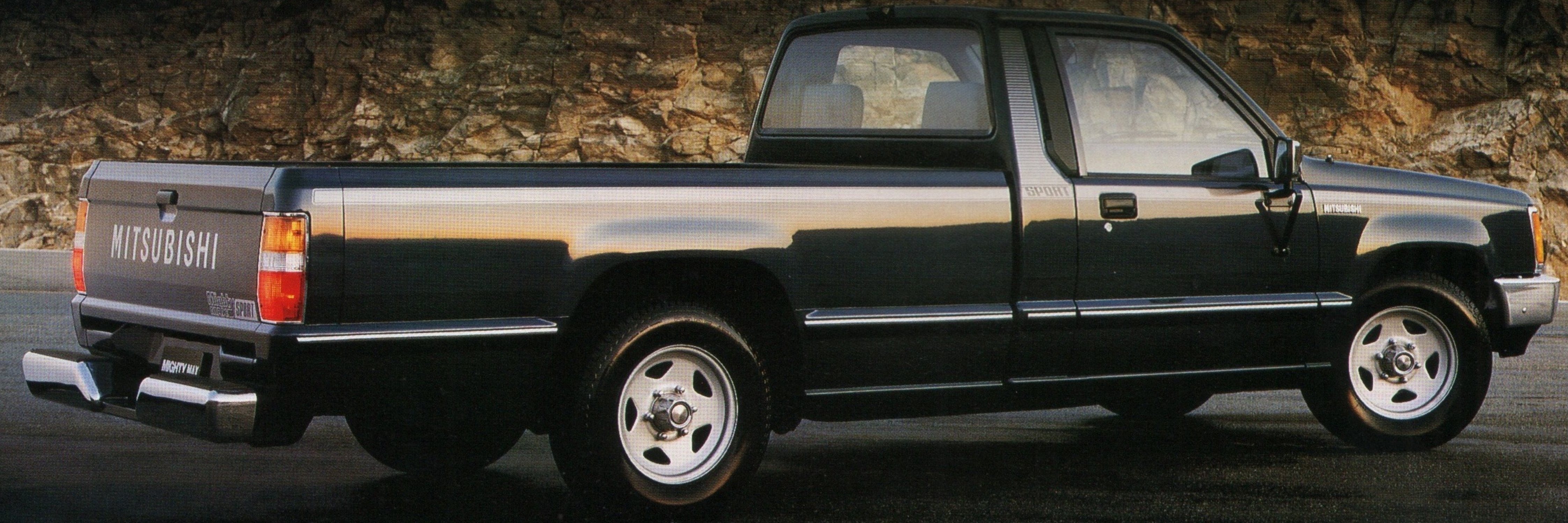
Beneath the restyled hood is the proven 2.6-liter engine, whose power was increased to 109-hp this year, along with other changes that improve driveability and quiet noise.

Retained were the patented Dual Engine Stabilizers™, which smooth out engine vibration so handily Porsche licensed the system for use on the 944 models.

A sturdy, six-crossmember frame and independent suspension provide a smooth ride.

Step inside for a new truck-driving sensation. A big wide cloth upholstered bench seat offers plenty of room for three.

Mighty Max Sport is the truck to get when you're looking for lots of features, without a big investment.

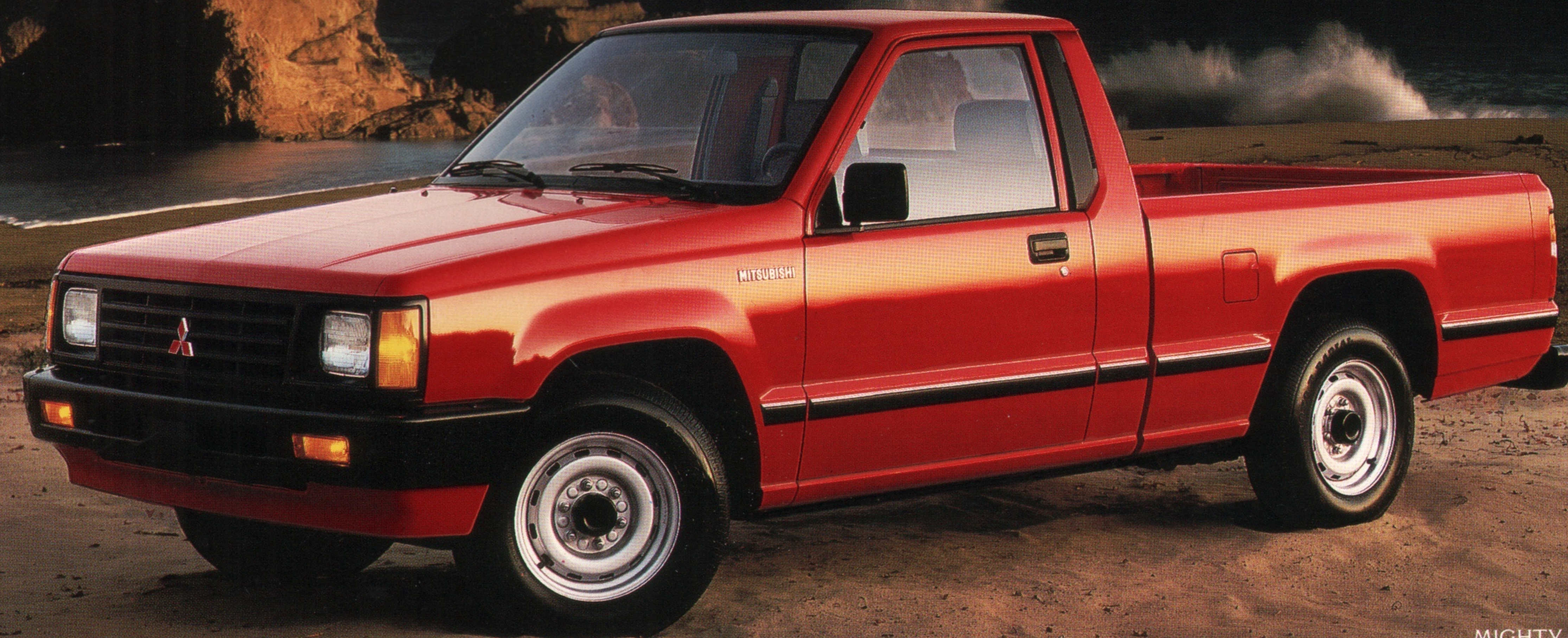


MIGHTY MAX SPORT

OUR MOST POPULAR NEW 2WD

Mitsubishi's value leader in the 1987 truck line is the short bed Mighty Max. The double-walled cargo bed with a 1,620 pound payload, is just the right size for everything... surfboards, motorcycles, jet skis or ATVs.

And though this is the most economical Mighty Max you can buy, it hides its low price behind a long list of standard features. Now you can indulge without splurging.



MIGHTY MAX

AN INVITATION TO EXPLORE

If the fun of the great outdoors is part of your life—or if you want it to be—the Montero is built for you. Made to crawl across rock, power through mud and snow or blast down dusty trails with equal ease.

For all its rugged muscle, Montero is also the perfect vehicle around-town. Mitsubishi Montero, Montero with SP package and Montero Sport.

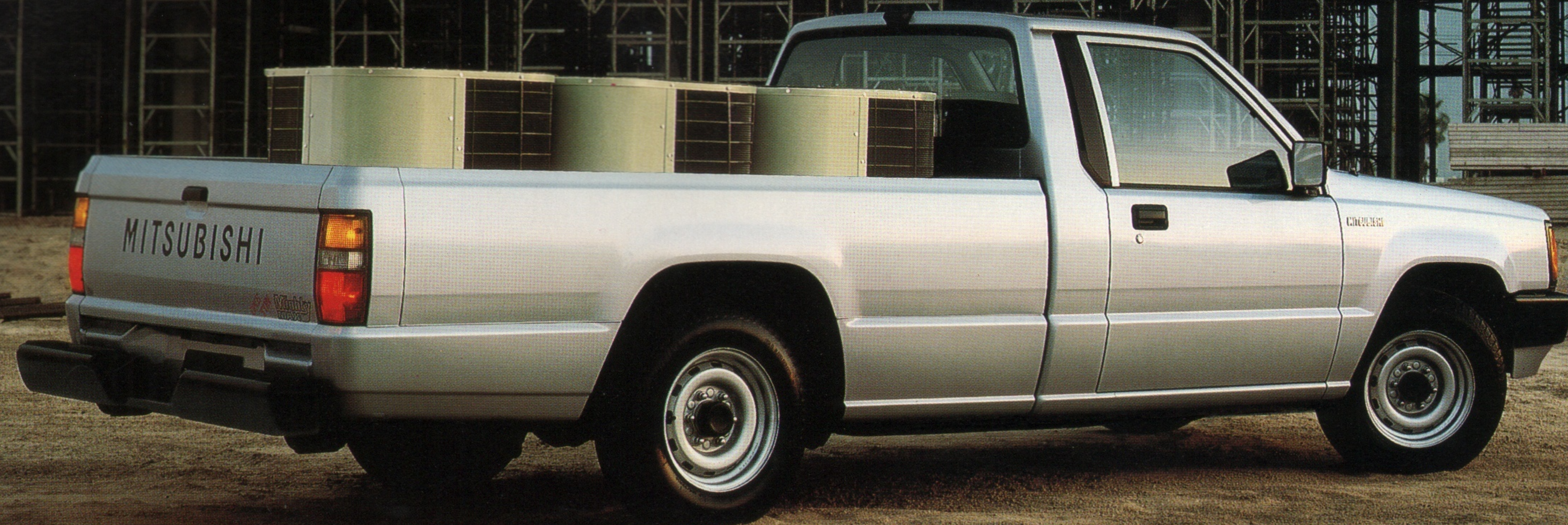


MONTERO SPORT

PUT MIGHTY MAX TO WORK

It's nice to do business in a Mighty Max truck. To comfort and style, you can add serious engineering that lets you pack a 1-ton load for getting more work done faster.

Handsome, comfortable, loaded with value at a reasonable price are the reasons businesses put Mighty Max to work, but the truth is... it's a ton of fun.



MIGHTY MAX ONE TON

OPEN FOR BUSINESS

Presenting the all-new Mitsubishi Cargo Van. A smooth and sleek new carrier that's been patiently crafted to move your goods with a minimum of effort. And a maximum of efficiency.

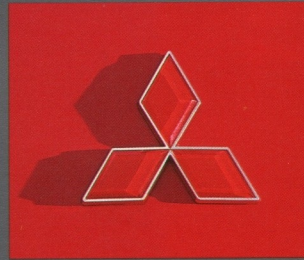
The cargo area provides an astonishing 161.6 cubic feet of volume, which translates to a huge 1,951-pound payload. All in all, a package of perfect proportions and extraordinary efficiency.

The new Mitsubishi Van. It's built to handle your business.



VAN

THE MITSUBISHI HERITAGE



Seventy years of innovative engineering and technology have gone into the design of Mitsubishi cars and trucks.

As one of the largest vehicle makers in the world, Mitsubishi Motors annually builds over a million vehicles for customers in 135 countries around the globe.

Wearing the three diamond trademark are more than 100 diversified companies ranging from heavy industry, electronics, chemicals, shipping and aircraft to cameras and banking.

It's this combination of wide ranging technology— aerodynamics, electronics, turbo engines and metallurgy— incorporated in its cars and trucks that has earned Mitsubishi Motors a worldwide reputation for reliability, performance and comfort.



PERFECTING THE EXPERIENCE.™

DEZO'S GARAGE



Part #MMSA-ADV-5028. Litho in U.S.A.
© 1986 Mitsubishi Motor Sales of America, Inc.