

1987 MITSUBISHI TREDIA



POTAMKIN MOTORS CORP.
ROUTE 22 WEST
N. PLAINFIELD, N.J. 07060
(201) 757-4000

A SENSATIONAL FAMILY SEDAN

Mitsubishi has changed the way people think about four door family sedans. To the basic qualities of dependability, economy and family room, they added an extra ingredient ... high tech fun.

This means, whichever level

of Tredia you order, the high performance Tredia Turbo, the luxurious Tredia L with the LS package or high

content Tredia L, you can be sure that Mitsubishi's advanced technology will add to the pleasure of owning it, every time you drive.

Technology that's apparent in the sophisticated 2.0 liter engine, with patented Dual Engine Stabilizers.™

Or in the feel and response you get as the result of an electronic fuel feedback system, an automatic spark advance and automatic valve lash adjusters that improve driveability, increase performance and decrease maintenance.

A smooth shifting 5-speed manual overdrive transmission is standard on both the Tredia Turbo and Tredia L, and

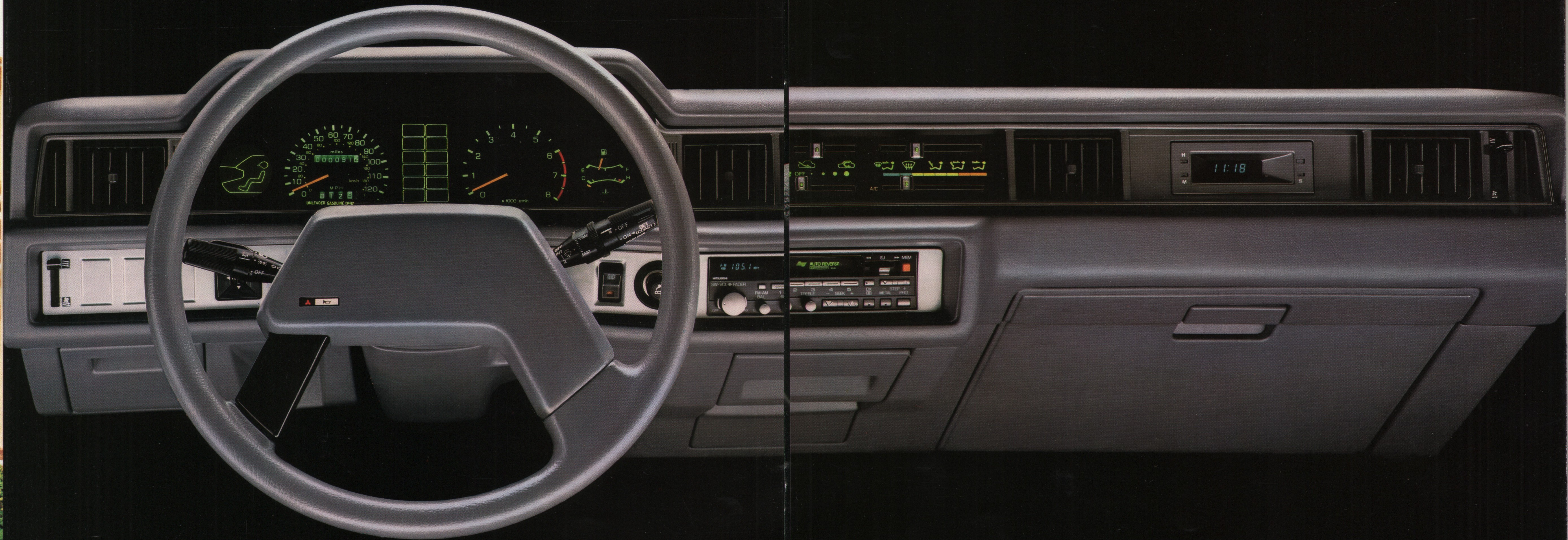
a 3-speed electronically controlled automatic transmission is available for the Tredia L.

To change how you think about four-door family sedans... take a ride in Tredia. See how Mitsubishi technology turned ho-hum driving into a smiling sensation.



TREDIA L WITH LS PACKAGE

THOUGHTFUL ENGINEERING FOR PRECISE CONTROL



Tredia makes the point that family sedans don't have to be spartan and austere. For proof it offers full instrumentation, including tachometer, tripmeter, digital quartz clock and a graphic air-flow indicator that shows the distribution of air through the dual bi-level heating/ventilation system.

You can select air direction, and whether it should be warm or cool.

Side window defoggers help keep the windows clear from condensation and a rear window defroster helps keep frost, snow and ice from blocking your vision.

The padded steering wheel is tilt adjustable to accommodate different drivers.

Important controls, including variable speed wipers, halogen headlight switch and cruise control are mounted on stalks behind the wheel for

easy access.

For sheer pleasure, turn on the electronically-tuned AM/FM stereo cassette radio with four speakers.

Now bring in the family... there's plenty of room.

...FOR LUXURIOUS COMFORT

This is the interior that challenges high price luxury sedans.

Front seats are wide, comfortable low-back bucket seats that fully recline and have tilt adjustable see-through headrests.

The upholstery is luxurious crushed velour, and deep, rich, cut pile carpeting extends from door-to-door.

Handy map pockets are in both front doors and on the back of each bucket seat.

Beside the driver's seat are controls for opening the trunk and the fuel filler door without leaving the car.

Power windows, power door locks, power mirrors, cruise control and

illuminated visor vanity mirror are all part of the luxurious LS package. And for smaller, but no less important passengers, Mitsubishi installed a special child safety seat anchor behind the rear seat to secure the seat tether.



TECHNOLOGY FOR COMFORT AND CONVENIENCE

The Tredia L and Tredia Turbo share the name and Mitsubishi technology... but they're not the same.

The L is one of the best family sedan buys on the market today with luxury features you would expect in higher priced cars. Full wheel covers, inside door map pockets, remote

hood and trunk releases, height adjustable steering column and a fold-down center arm rest in the rear.

The Turbo is more than a family car with comfort and room for five... it's also an eye-opening performer. It features a potent 116-hp turbocharged engine to add performance to Tredia's

basic sedan practicality.

A smooth shifting 5-speed manual transmission is standard on both the Turbo and L, and the Tredia L offers an optional 3-speed ELC™ electronically controlled automatic transmission to do the shifting for you.

RIDE COMFORT REFINED A pleasing ride, combined with excellent handling, is the result of four wheel independent suspension with MacPherson struts in front, telescoping shocks at the rear and beefy stabilizer bars, both front and rear.

And for a feeling of confidence, power assisted vented front disc and rear drum brakes provide sure stopping.

Steering is a pleasure with a precisely controlled power assist rack and pinion steering system.

BODY SHAPED SEATS Tredia's driver and passenger seats were designed to fit the body, provide support and stability while driving.

The seats fully recline, and the see-through headrests are adjustable to conform to the seat back position.



THE TECHNOLOGY BEHIND TREDIA'S PLEASING WAYS

LUXURY IS STANDARD ON TREDIA The amazingly complete Tredia offers more than 30 standard features including a four speaker, electronically tuned AM/FM stereo radio cassette, tinted glass, power steering, power brakes, remote control dual mirrors, carpeted trunk, digital quartz clock, rear window defroster...



and that's for starters.

The Turbo adds even more features like high perform-

ance radial tires, a sport steering wheel and sporty turbo-styled aluminum alloy wheels.

THE PLEASURE OF POWER Tredia, equipped with the LS package adds the extra touches that make driving more fun and convenient. For example, a power remote control for adjusting side view mirrors is mounted on the dash so you can adjust the mirrors from the driver's seat and be sure they show a clear view aft. Power window controls are mounted in the door arm rest. Another convenience in a Tredia sedan.



FINGERS DO THE WALKING

When you open the driver's door you'll notice four controls located on the left side of the seat. One control opens the trunk, another the fuel filler door, by remote control. Other seat-side controls let you adjust the seat forward or back, and position the reclining seat back.



A NICE MOVE Every Tredia model comes equipped with an adjustable steering column. You'll find yourself adjusting the column when you change the seat position. Or on long drives, a slight adjustment in the column helps reduce the fatigue that comes from maintaining the same driving position for several hours. A control near the instru-

ment panel releases the column lock to let you move the wheel into position.

TAMING THE WIND Tredia's crisp, handsome styling is aerodynamically designed to help reduce power robbing wind resistance, and to decrease wind noise at highway speeds.

The Tredia Turbo is easily identified by its sporty black out treatment, including grille, door handles, molding and trim, sporty turbo-styled alloy wheels and 60 series high performance tires. An air dam adds a sleek sporty appearance and aerodynamic efficiency.

ASSURED QUALITY Dependability is a prime consideration in the purchase of any car. And Mitsubishi's confidence in their products is demonstrated by four basic warranty programs.

First is a 12-month/12,000-mile New Car Basic Limited Warranty.

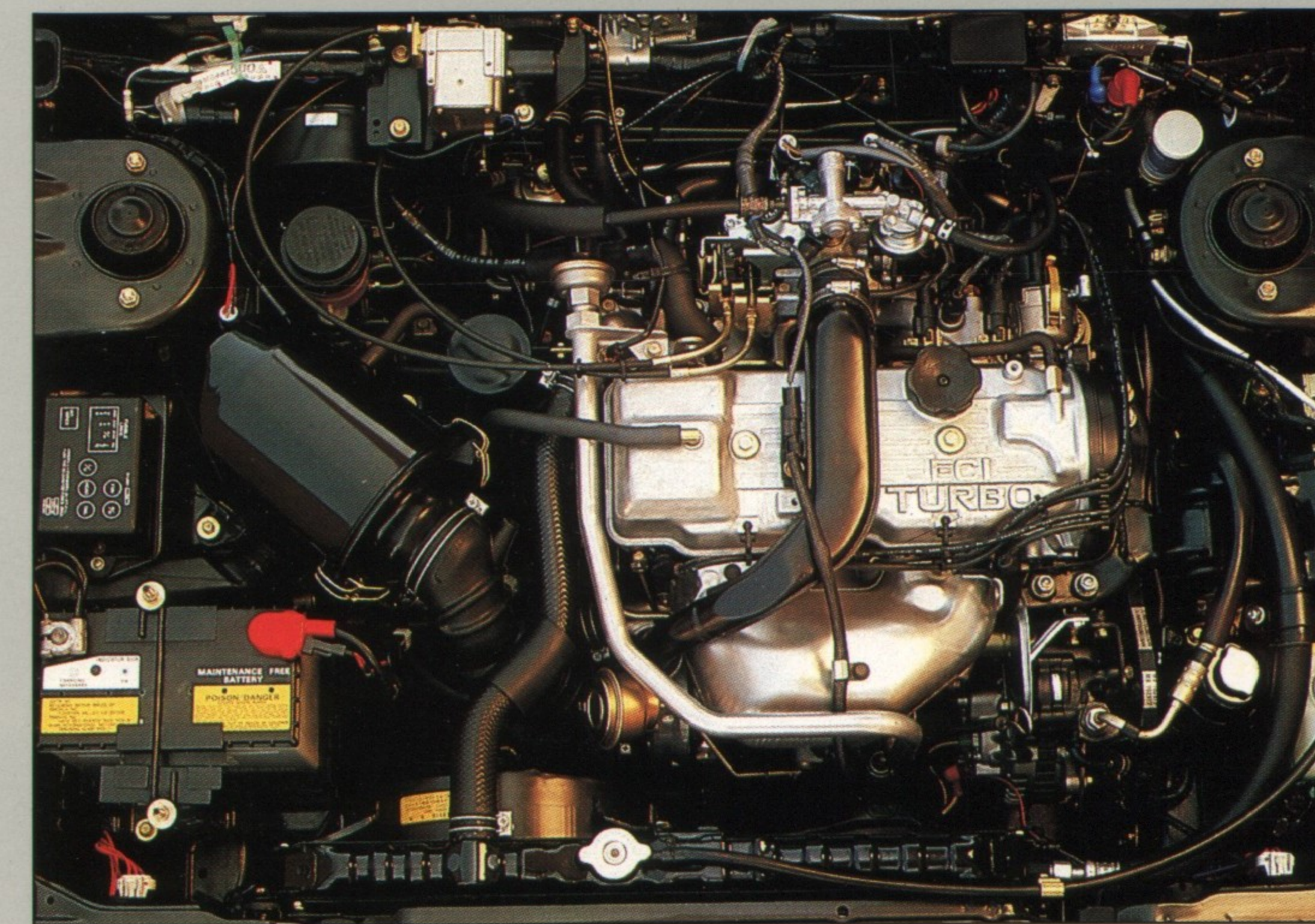
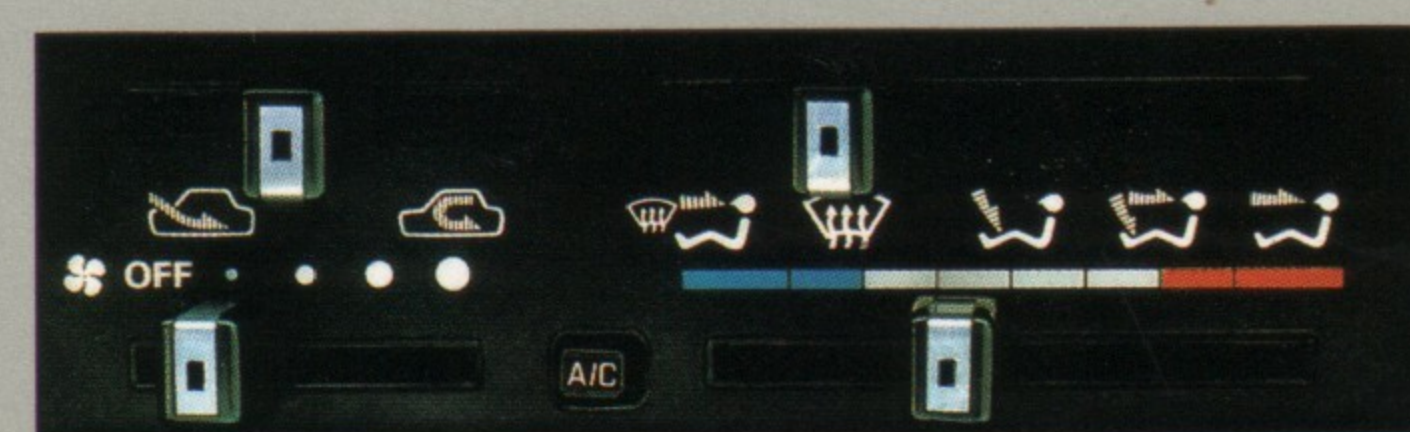
Second is a 2-Year/24,000-mile basic new vehicle limited warranty on drive train components.

Third, is a 5-Year/50,000-mile Anti-Corrosion Perforation Limited Warranty. It protects all outer body panels against corrosion.

Fourth, is a new 3-Year/36,000-mile Electronics Limited Warranty that

covers the advanced computer controls. All in all, four warranty programs that provide solid backing for Tredia's fine reputation. For complete warranty details see your Mitsubishi Motors dealer.

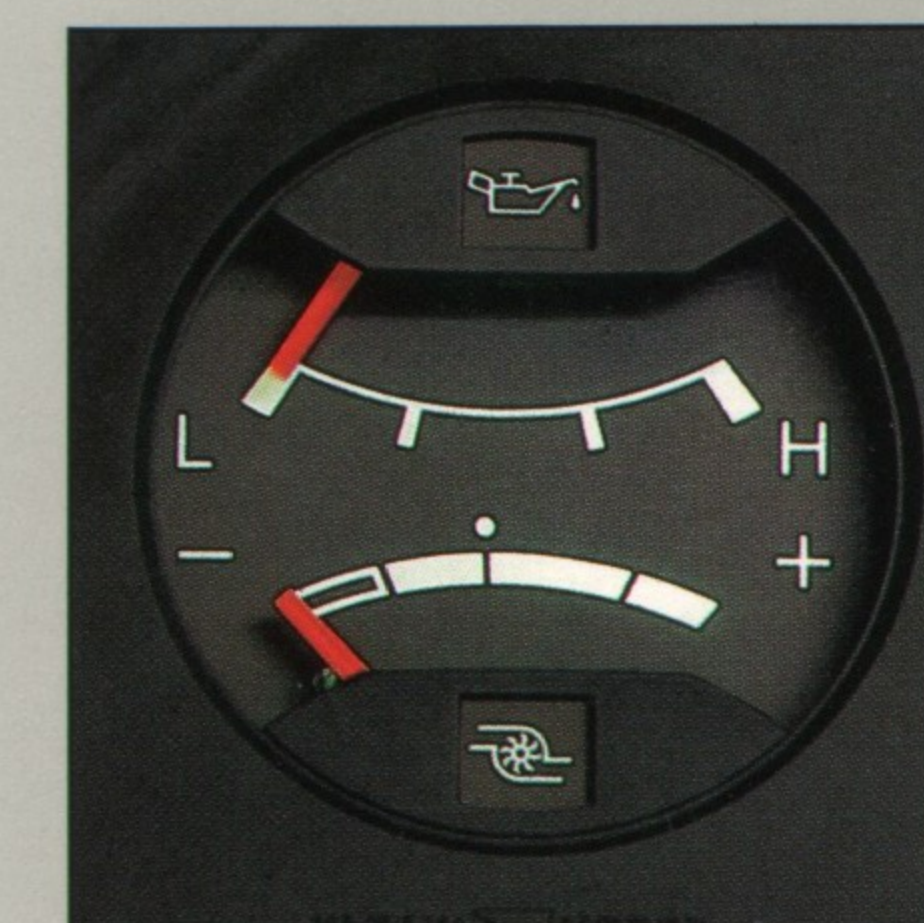
A COOL DECISION Another option available is Tredia's versatile air conditioning system. It's designed to keep you cool on hot summer days and works in conjunction with the heater to dehumidify the air keeping your windows fog free on cold winter days.



PUTTING ON THE POWER You need keen hearing to note when the turbocharger goes to work. But rather than listen for the whisper, a turbo boost gauge, beneath an oil pressure gauge on the instrument panel, signals when the turbo system is turning up the power.

The power comes from expanding exhaust gasses used to pack a denser air-fuel mixture into the combustion chamber. This gives more efficient combustion and more power from less fuel and from a less massive engine.

Mitsubishi engineering has eliminated many of the problems associated with other turbocharging systems. The turbo impeller was designed with all of Mitsubishi's metallurgical know-how, to be as strong and as light as possible. The impeller bearing is built for low friction. It's water cooled to reduce wear and improve dependability.



When the turbo gauge signals the turbocharger is doing its job... you can leave mundane notions of family car performance behind... way behind.

A HELPING HAND Both Tredia models feature variable boost power-assist rack-and-pinion steering. When parking or maneuvering at low speed, the power assist is increased. While cruising, power assist is reduced to provide better road feel and control to the wheel.



EASY SHIFTING Although the 5-speed manual overdrive transmission is standard on all Tredias, an optional 3-speed electronically controlled automatic transmission can be ordered for the Tredia L, and comes standard on Tredia L with the LS package.



MAKING ROOM FOR PEOPLE The surprisingly large cabin and trunk space is the result of Tredia's front wheel drive and transverse mounted engine. There are 11 cubic feet of trunk space, and the passenger floor is virtually flat, with no transmission hump to straddle.

1987 TREDIA FEATURES AND SPECIFICATIONS

Features & Options

MECHANICAL/FUNCTIONAL	TREDIA L		TURBO	
2.0-liter, 88-hp engine	S			
1.8-liter, 116-hp engine		S		
5-speed manual overdrive transmission	S	S		
ELC™ 3-speed automatic transmission	O			
Front/rear stabilizer bars	S	S		
Styled steel wheels, full wheel covers	S			
Aluminum alloy wheels (14")		S		
P185/70R13, All season radials	S			
195/60HR14, High performance radials		S		
Power assist vented front disc brakes	S	S		
Self-adjusting rear drum brakes	S	S		
Water cooled turbo housing		S		
Dual bi-level heating/ventilation, 4-sp. fan	S	S		
Air conditioning	O	O		
Cruise control	O†	S		
Height adjustable steering column	S	S		
Power assist rack & pinion steering	S	S		
5-year/50,000 mile Anti-Corrosion Perforation Limited Warranty*	S	S		
3-year/36,000 mile Electronics Limited Warranty*	S	S		
2-year/24,000 mile Powertrain Limited Warranty*	S	S		
LS package including cruise control, power windows and door locks, passenger-side illuminated vanity mirror, dual power remote mirrors (available with automatic transmission only)	O			
EXTERIOR				
Air dam extension		S		
Black out grille		S		
Bright accent grille	S			
Halogen headlamps	S	S		
Tinted glass	S	S		
Front mudguards (black)	S	S		
Color-key bumpers	S			
Color-key bumper w/black filler		S		
Dark upper windshield band		S		
INTERIOR				
2-speed wiper/washer	S	S		
Variable intermittent wiper feature	S	S		
Remote hood release	S	S		
Remote trunk release	S	S		

S-Standard O-Optional

	TREDIA L		TURBO	
Remote fuel filler door release	S	S		
Manual remote dual mirrors	S	S		
Power remote dual mirrors (with LS pkg.)	S			
Carpeted trunk	S	S		
Passenger assist grips (front & rear)	S	S		
Tachometer	S	S		
Tripmeter	S	S		
Coolant temperature gauge	S	S		
Oil pressure gauge		S		
Turbo boost gauge		S		
Digital quartz clock	S	S		
Full face cloth seat trim	S	S		
Electronically tuned AM/FM stereo/cassette w/4 speakers	S	S		
Reclining bucket seats, see-through adjustable headrests	S	S		
Door map pockets	S	S		
Center console	S	S		
High back rear seat	S	S		
Fold-down center armrest, rear	S	S		
Rear window defroster	S	S		
Trunk lamp	S	S		
Power door locks (with LS pkg)	S			
Passenger lighted vanity mirror (with LS pkg)	S			
Power windows (with LS pkg)	S			
Sport steering wheel		S		
EXTERIOR COLORS/INTERIOR TRIM				
Rocky White/Brown	S			
Dakota Sand/Brown	S			
Bright Silver/Dark Gray	S	S		
Baltic Blue/Dark Gray	S	S		
Selbia Black/Dark Gray		S		
Mojave Beige/Brown	S			
Red/Dark Gray	S	S		
ACCESSORIES				
Mudguards	O	O		
Floor mats	O	O		
Roof rack	O	O		
Wheel arch moldings	O	O		

*For complete details, see copy of Limited Warranty at your dealer.

† Available only with LS package.

Specifications

ENGINE	2.0-LITER (G63B)	1.8-LITER TURBO (G62B)
No. cylinders, layout	4-cylinder, inline	4-cylinder, inline
Bore x stroke (mm, in.)	85 x 88 (3.35 x 3.46)	80.6 x 88 (3.17 x 3.46)
Displacement, cc, (cu. in.)	1997 (122)	1795 (109)
Compression ratio	8.5:1	7.5:1
Fuel system	1-2V	Elect. fuel injection
Horsepower @ rpm (SAE Net)	88 @ 5000	116 @ 5500
Torque @ rpm, lbs.-ft. (SAE Net)	108 @ 3500	129 @ 3000
Engine features include: Single overhead camshaft, Dual Engine Stabilizers,™ automatic valve lash adjusters, electronic fuel feedback carburetion system (non-turbo engine), Turbocharger with ECI™ fuel injection, watercooled turbo housing (turbo engine).		
Emission control system: EGR, air induction, 3-way catalyst with feedback control.		
CLUTCH		
Type:	Single-plate, dry	
Diameter, in.	7.9	
TRANSMISSIONS		
	5-SPEED MANUAL	3-SPEED AUTOMATIC
Gearbox Ratios (:1)		
1st	4.226	2.846
2nd	2.365	1.581
3rd	1.467	1.000
4th	1.105	—
5th	0.855	—
Reverse	4.109	2.176
Final drive ratio (:1)		
2.0-liter	3.187	3.187
1.8-liter Turbo	3.466	—
SUSPENSION		
Front:	Independent with struts, coil springs and stabilizer bar (0.87" non-turbo, 1.02" turbo)	
Rear:	Independent with trailing arms, coil springs, telescopic shock absorbers and stabilizer bar (0.57").	
DIMENSIONS		
Wheelbase	96.3	
Overall length	172.4	
Overall width	65.4	
Overall height	51.6	
Track (front/rear)	55.5/54.1	
Head room (front/rear)	37.6/36.4	
Shoulder room (front/rear)	52.8/52.8	
Leg room (front/rear)	40.9/34.3	
Hip room (front/rear)	53.5/54.3	
Cargo capacity, trunk (cu.ft./m3)	11.02/0.312	
Coefficient of drag	0.38	
STEERING		
Type	Rack & pinion	
Power assist	Standard	

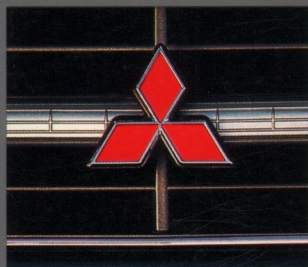
STEERING Cont.		
Ratio	16.8:1	
Turns, lock-to-lock	2.9	
Turning circle, curb-to-curb, ft.	32.2	
BRAKES		
Power assist	Standard	
Type, front	Vented disc	
Diameter in. x width (non-turbo/turbo)	9.5 x 0.71/10.4 x 0.94	
Type, rear	Self-adjusting drum	
Diameter in. x width	8.0 x 1.65	
Total brake swept area, sq. in. (non-turbo/turbo)	246.2/267.8	
ELECTRICAL SYSTEM		
Battery	12-V, maintenance free	
Ignition system	Electronic	
Alternator rating, amps	65	
FUEL SYSTEM		
Type fuel required	Regular unleaded	
Fuel pump type (2.0-liter/1.8-liter turbo)	Mechanical/electric	
Fuel tank capacity, U.S. gallons	12.8	
WHEELS & TIRES		
Wheel size:		
Tredia L	13 x 5 J	
Tredia Turbo	14 x 5.5 JJ	
Wheel Type:		
Tredia L	Stamped steel	
Tredia Turbo	Aluminum alloy	
Tire Size:		
Tredia L	P185/70R13	
Tredia Turbo	195/60HR14	
CURB WEIGHTS —lbs.		
Tredia L, 3A/5M	2403/2370	
Tredia Turbo, 5M	2469	
FUEL ECONOMY FIGURES**		
MODEL	Eng./Transmission	Est. City/Highway
Tredia L	2.0/5M	24 31
Tredia L	2.0/3A	24 26
Tredia Turbo	1.8/5M	22 29

Technical data, features, options and other equipment shown in this catalog are based on the latest available information at the time of printing and are subject to change without notice. Some vehicles are shown with optional equipment. For further information on the additional options and accessories, contact your Mitsubishi Motors Dealer. Availability at dealers of vehicles with specific features may vary. Headlights, parking lights and fog lights on vehicles lighted for illustration purposes only.

Call 1-800-447-4700 for your nearest Mitsubishi Motors Dealer.

Part #MMSA-ADV-5023. Litho in U.S.A. © 1986 Mitsubishi Motor Sales of America, Inc.

THE MITSUBISHI HERITAGE



Seventy years of innovative engineering and technology have gone into the design of Mitsubishi cars and trucks.

As one of the largest vehicle makers in the world,

Mitsubishi Motors annually builds over a million vehicles for customers in 135 countries around the globe.

Wearing the three diamond trademark are more than 100 diversified companies ranging from heavy industry, electric, shipping, banking and aircraft to chemicals and cameras.

It's this combination of wide ranging technology—aerodynamics, electronics, turbo engines and metallurgy—incorporated in its cars and trucks that has earned Mitsubishi Motors a world-wide reputation for reliability, performance and comfort.



PERFECTING THE EXPERIENCE.

