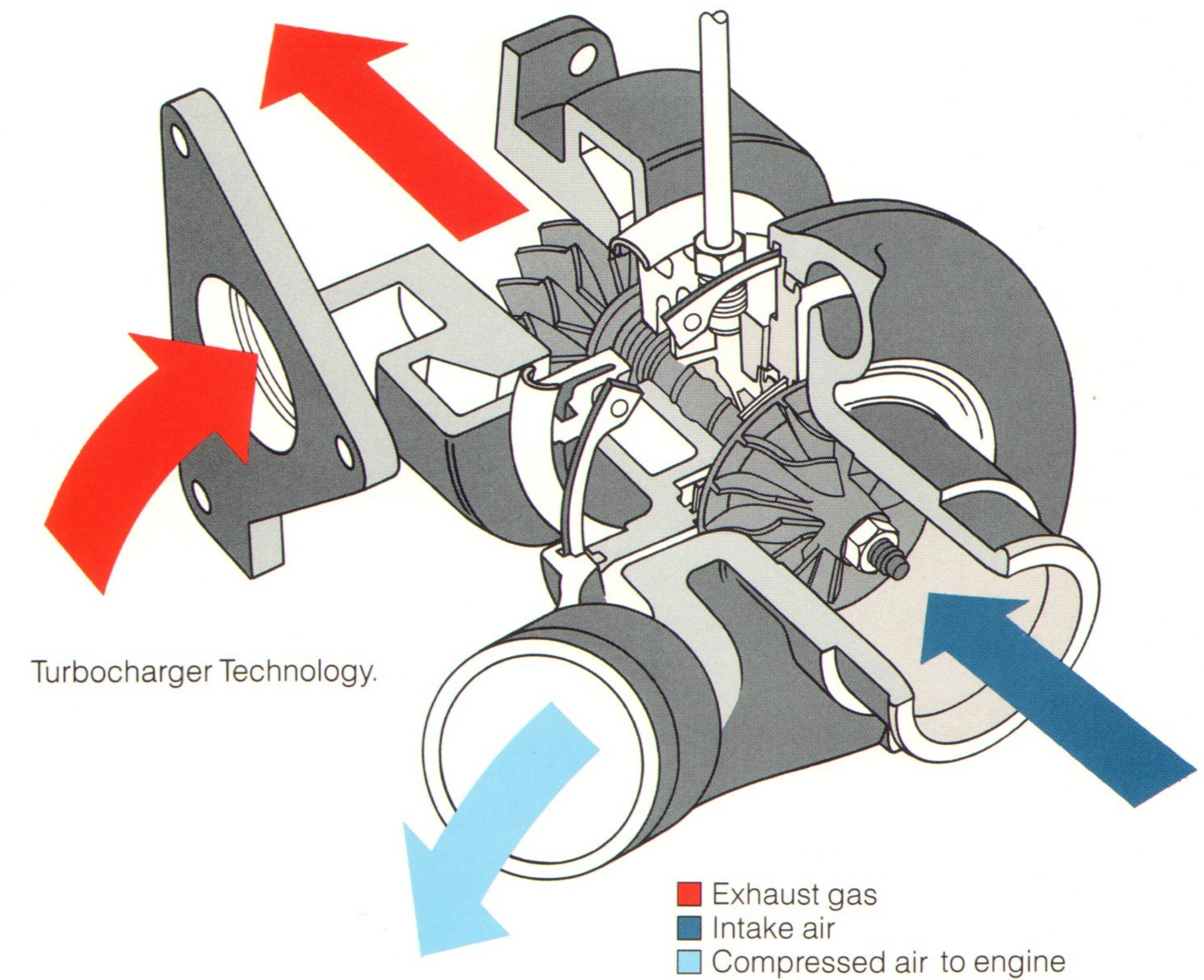


1988 Mirage



M I T S U B I S H I



Mitsubishi Motors... Our Experience Shows.

In the last seventy years, Mitsubishi Motors Corporation has become one of the world's largest manufacturers of cars and trucks, producing over 1.2 million vehicles last year alone.

In 1988, the quality vehicles that carry the Mitsubishi name are the result of years of experience, research and technological refinement. All combined to provide you with a car that is not only reliable, stylish and efficient, but one that truly performs.

There's Always a Better Way.

Mitsubishi has long been recognized throughout the industry for its leadership in engineering advancements that improve and enhance the performance and durability of its vehicles. Some of its many achievements include Dual Engine Stabilizers™, an internal counter balancing system

used in most of its 4-cylinder powerplants to neutralize inherent vibrations for quieter, smoother engine operation; aerodynamic flush body styling for improved efficiency, and a major boost to performance... turbo-charger technology.

Mitsubishi is continuing its commitment to the research and development of components, integrated control systems, aerodynamic exterior designs, and ergonomic interior designs to develop cars, trucks and utility vehicles to meet the needs of the future.

Mitsubishi Mirage. A True Combination of Technology and Style.

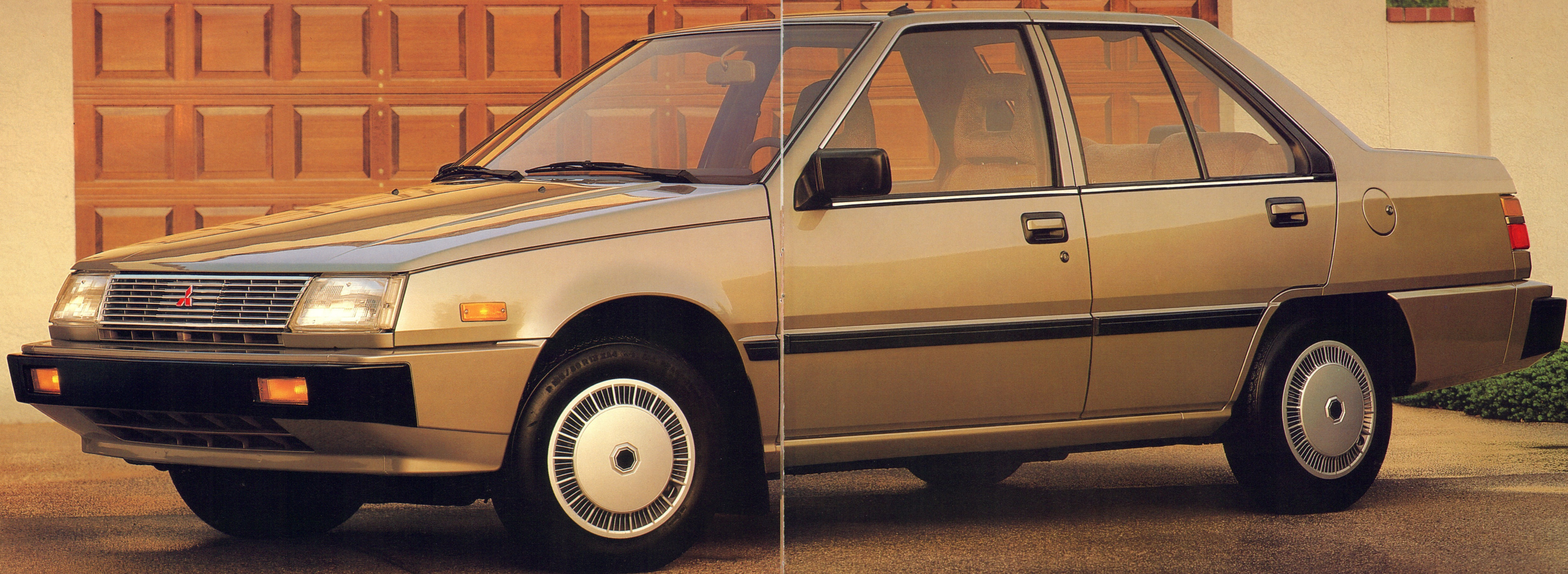
Drive the 1988 Mitsubishi Mirage, and you'll see what we mean when we say our

experience shows in performance and style. The four-door sedan is a true family car that's as economical as it is stylish. And the rakish two-door model offers our turbocharger technology and aerodynamics expertise in a surprisingly inexpensive package. The 1988 Mirage is proof positive that Mitsubishi engineering and technological expertise translate into an outstanding automotive value for the roads of America.

Take a few moments to review the surprising numbers of features that are standard with Mirage. It will be obvious that Mitsubishi offers you *the* exceptional value in a well-equipped car.



M I R A G E 4 - D O O R



**The Stylish Sedan
That Has Value Written All Over It.**

This is one sedan that proves value can come in a stylish package. The Mirage 4-door is extremely efficient without being stodgy. It's designed with aerodynamic good looks and practical value in mind.

There's an extended air dam, flush mounted composite headlamps and a rakish front hood that help make Mirage one of the most fuel efficient family cars in America*.

Its four-wheel independent suspension provides a comfortable ride for all aboard. And the power-assist front disc brakes bring Mirage to a smooth, sure stop.

What moves you is a workhorse of a powerplant: a reliable transverse mounted

1.5-liter, 4-cylinder, single overhead cam engine. Couple it with either a 5-speed manual overdrive or optional 3-speed Electronically Controlled (ELC™) automatic and you'll know what dependability is all about.

*See EPA mileage figures in specifications section.

Living Room For a Family Of Five.

Considering the amount of time the average family spends on the road, it's no wonder this Mirage 4-door is getting noticed. There's not only elbow room for five passengers, there's also breathing, living, leg and head room in abundance.

That space is filled with comfort, thanks to contoured sport bucket seats up front with 3-position adjustable, see-through headrests. In the back, passengers get their fair share of special treatment, too. For high style and complete comfort nothing beats these split, high back seats. Fold one or both down to accommodate oversized items that can't fit in the trunk.

Is there any doubt this Mirage 4-door can make anyone feel at home on the road?

Show and Tell.

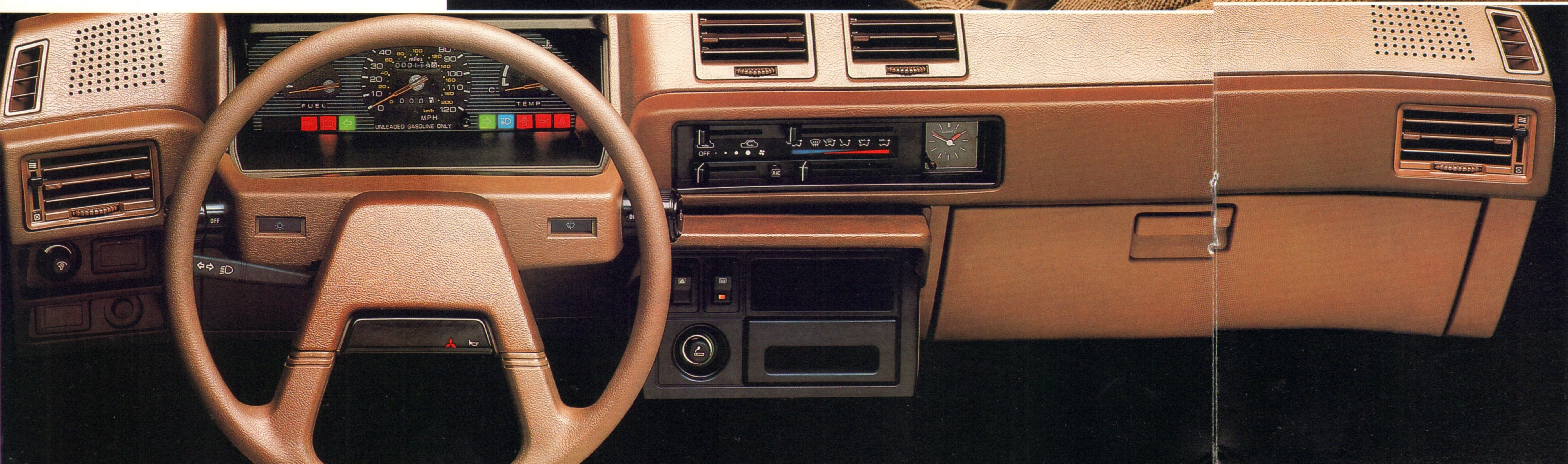
Slip behind the wheel and you'll feel immediately at home. Nothing is out of place. Everything is in plain view. All within easy reach.

That's by design. This instrument panel is meant to be seen, so dials are big, bright and eminently readable.

Front and center there's a speedometer, resettable tripmeter, fuel and temperature gauges. Just below, warning lights keep you in touch with all vital systems. While to the right, an analog quartz clock keeps time a glance away.

Because stretching every gallon of gas matters, a "Shift" light blinks on models with the 5-speed manual transmission when it's time to shift to the next gear. It's a nice touch that can pay off in big fuel savings*.

*See EPA mileage figures in specifications section.



Improve Your Driving Environment.

Master the environment with a dual bi-level heating/ventilation system that keeps you nice and warm; and it has a four speed fan to quickly defog and defrost both front and side windows.

For the sounds of music, we offer the choice of two optional electronically tuned AM/FM stereo systems with four speakers—one offering the added pleasure of a cassette player with Dolby® noise reduction. Either system turns your Mirage into a concert hall on wheels.

Fast Becoming The Talk Of The Town.

Be prepared to be totally wowed. This is one car that really knows how to move you. Until recently, only a select few knew about the Mirage Turbo sensation. But, like our tour de force of turbo power, the word's getting out fast.

All this excitement springs out of a 105 horsepower electronically fuel injected/turbocharged 1.6 liter engine. Developing 122 lbs.-ft. of torque, it'll pin you to your seat from 0-50 in 6.2 seconds.*

Turbo power like this needs to be precisely controlled. That's why Mirage features a fully independent suspension with heavy duty front springs, front and rear stabilizer bars, high performance/speed rated radials, gas-charged shock absorbers and power-assist vented front disc brakes.

Right now, all of this is just talk. The real fun begins the moment you strap yourself

in and feel the rush of this turbo coupe under full boost. It'll thrill you to your toes.

For the Serious Driver Looking for Fun.

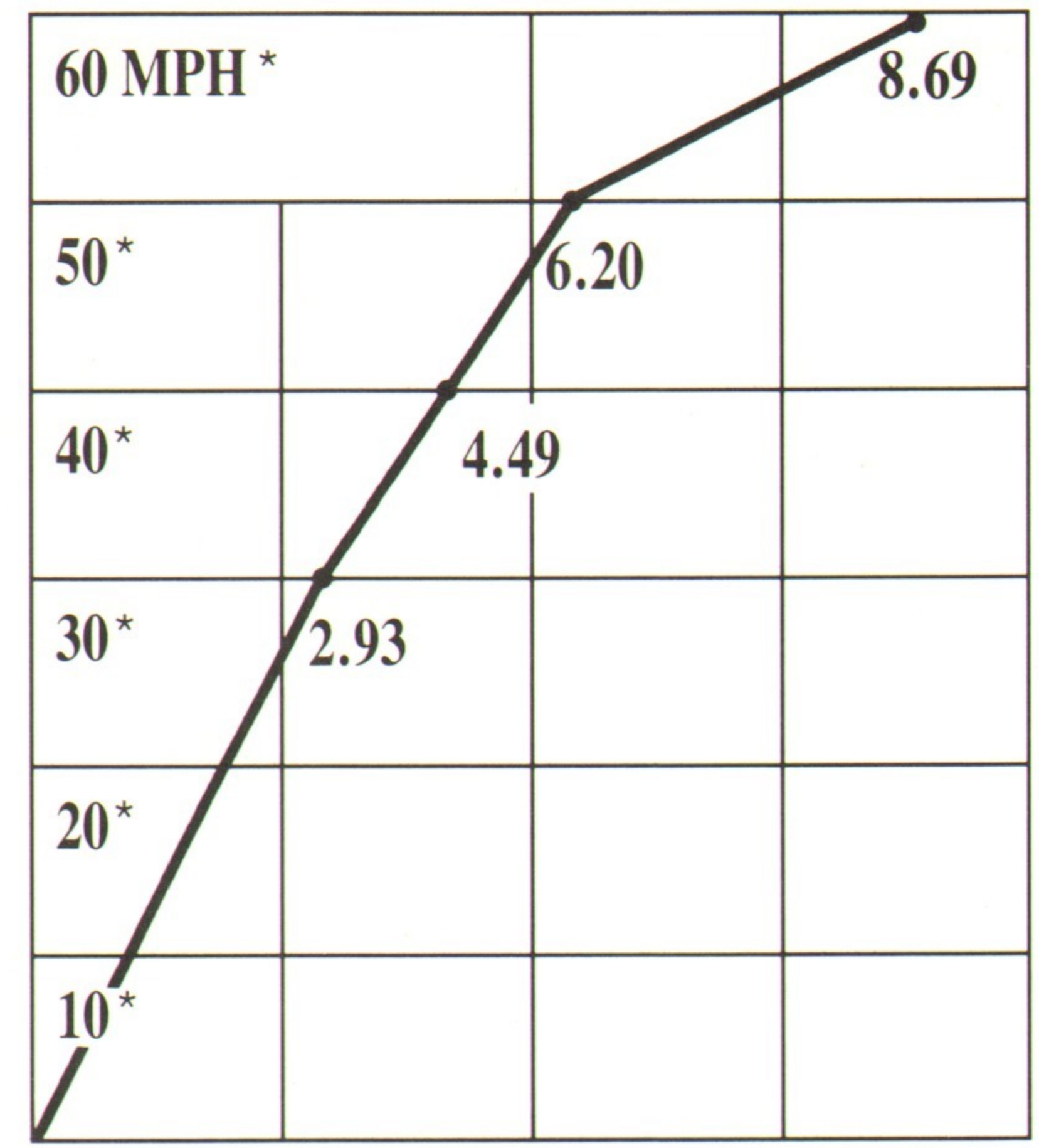
The Mirage Turbo is the exception to the rule that a car for serious drivers has to be seriously expensive. This is one car that puts that rumor to rest. About it, the editors of ROAD & TRACK said "...the Mirage is small, quick and a bargain."¹

CAR & DRIVER added this praise "...a jewel-like little car; tight, precise and rewarding."²

"...An aerobodied flying wedge with excellent standing start acceleration, great handling and braking." This from MOTOR TREND.³

It's also one heck of a fun car to drive. Find your nearest winding road and put it through its moves. What you'll discover is

ACCELERATION PERFORMANCE DATA



1/4 MILE TIME (SEC.)*

16.73 @ 83.5 MPH

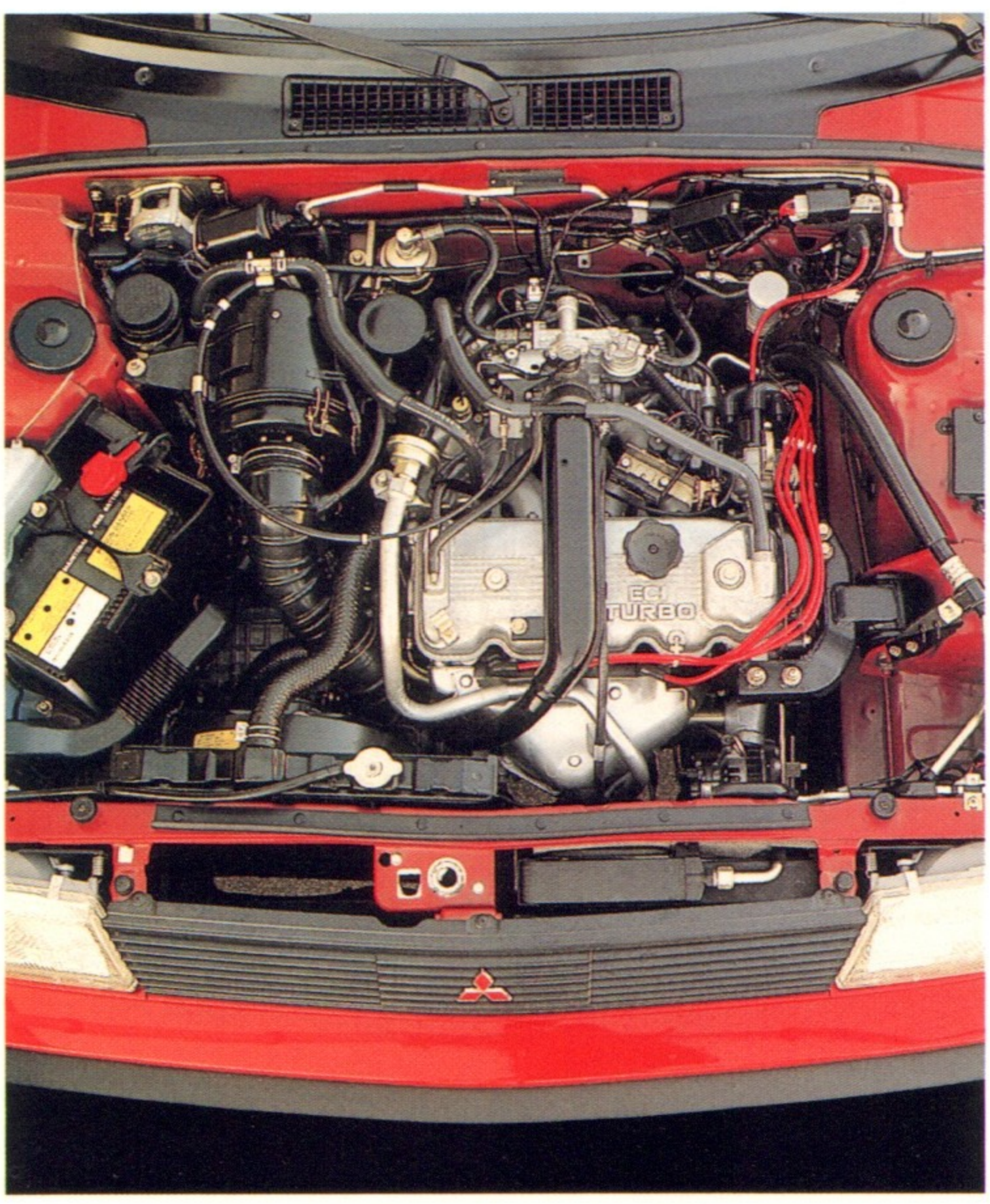
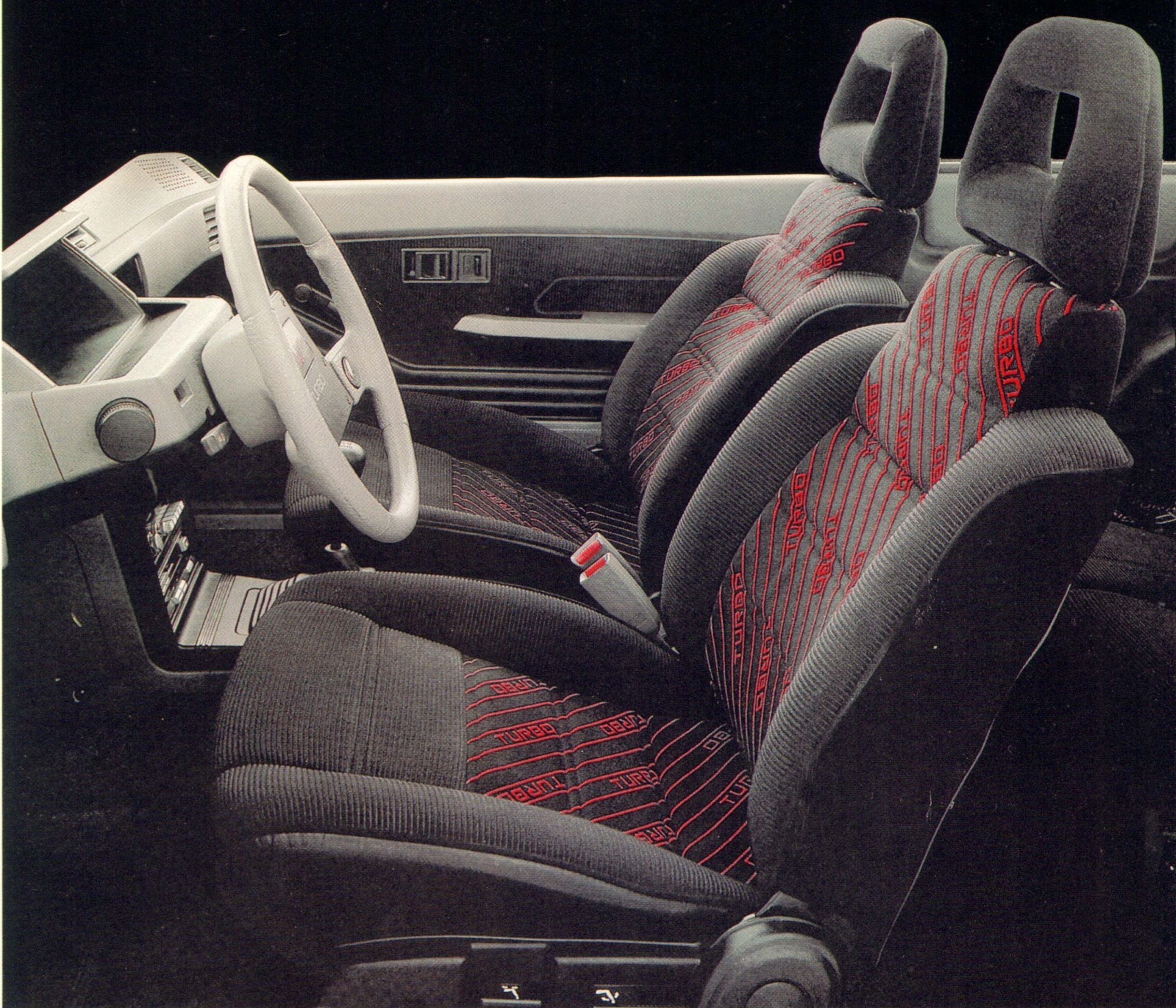
0.83g LATERAL ACCELERATION

a complete union of breathtaking turbo power and front-wheel drive precision and control.

The way it drives has a lot to do with the way it looks. Its wedge shape is as functional as it is rakishly attractive. Notice the extended air dam in front, extended side sills, plunging hoodline, wind-slipping composite headlamps and rear roof spoiler. We're talking serious aerodynamics.

But the real measure of success is how much fun you have driving the Mirage Turbo. Because you get a turbocharged turn-on when you hit the accelerator, we know we've achieved our goal.

*Time compiled by using a professional test driver using a 1987 model.
 1. ROAD & TRACK, February, 1985.
 2. CAR & DRIVER, March, 1987.
 3. MOTOR TREND, April, 1985.



Inside Moves.

You have to be comfortable with this kind of power to fully appreciate it. So your Mirage Turbo comes with body-molded, fully adjustable, reclining sport bucket seats with heavy side bolsting and exceptional lumbar, hip and shoulder support.

The instrument panel is simple and clean. Every dial is easy to read, from the oversized tachometer and speedometer, to the turbo boost gauge. And from where you sit behind the racy sport steering wheel the view is truly commanding.

The Power Down Below.

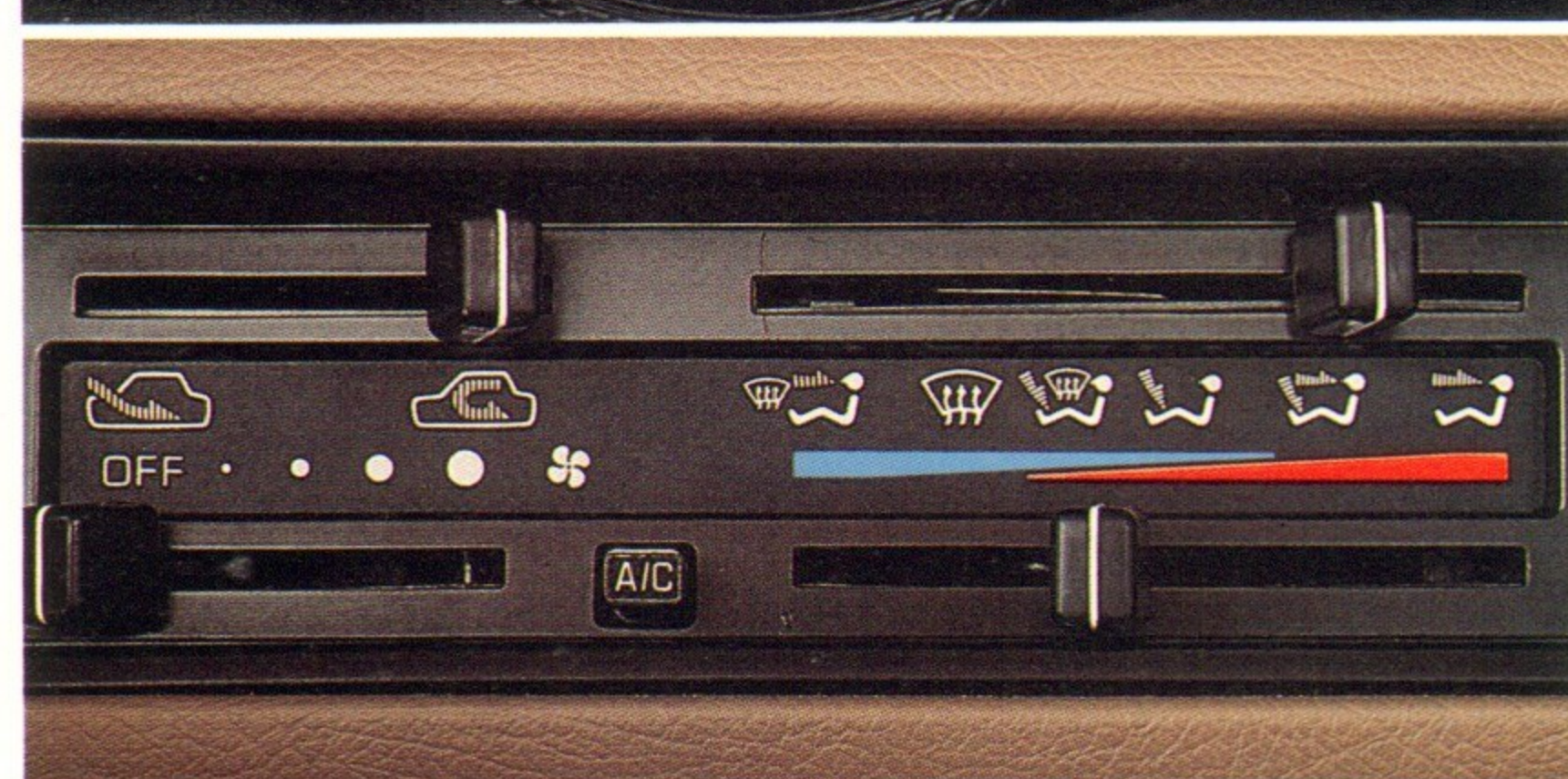
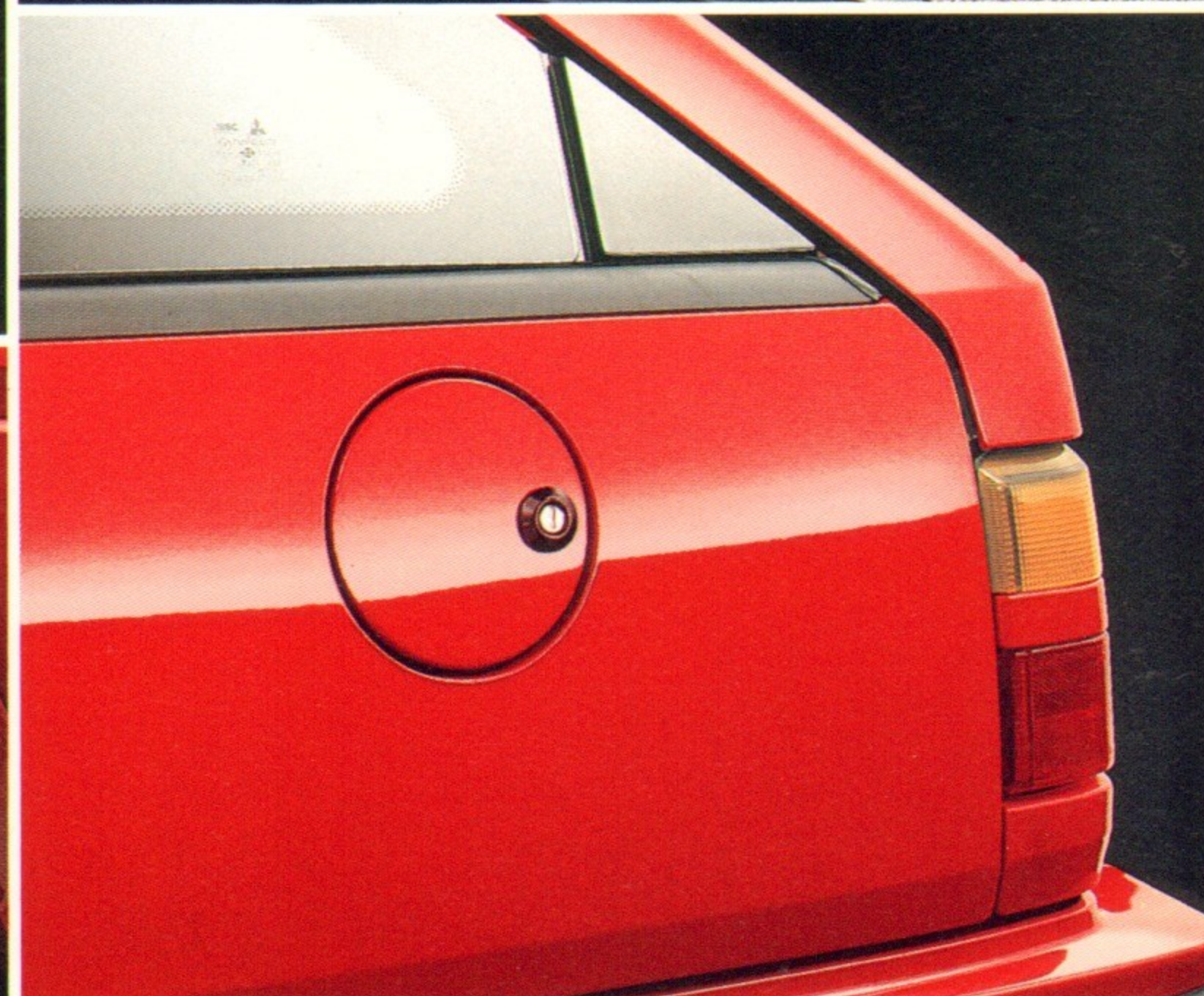
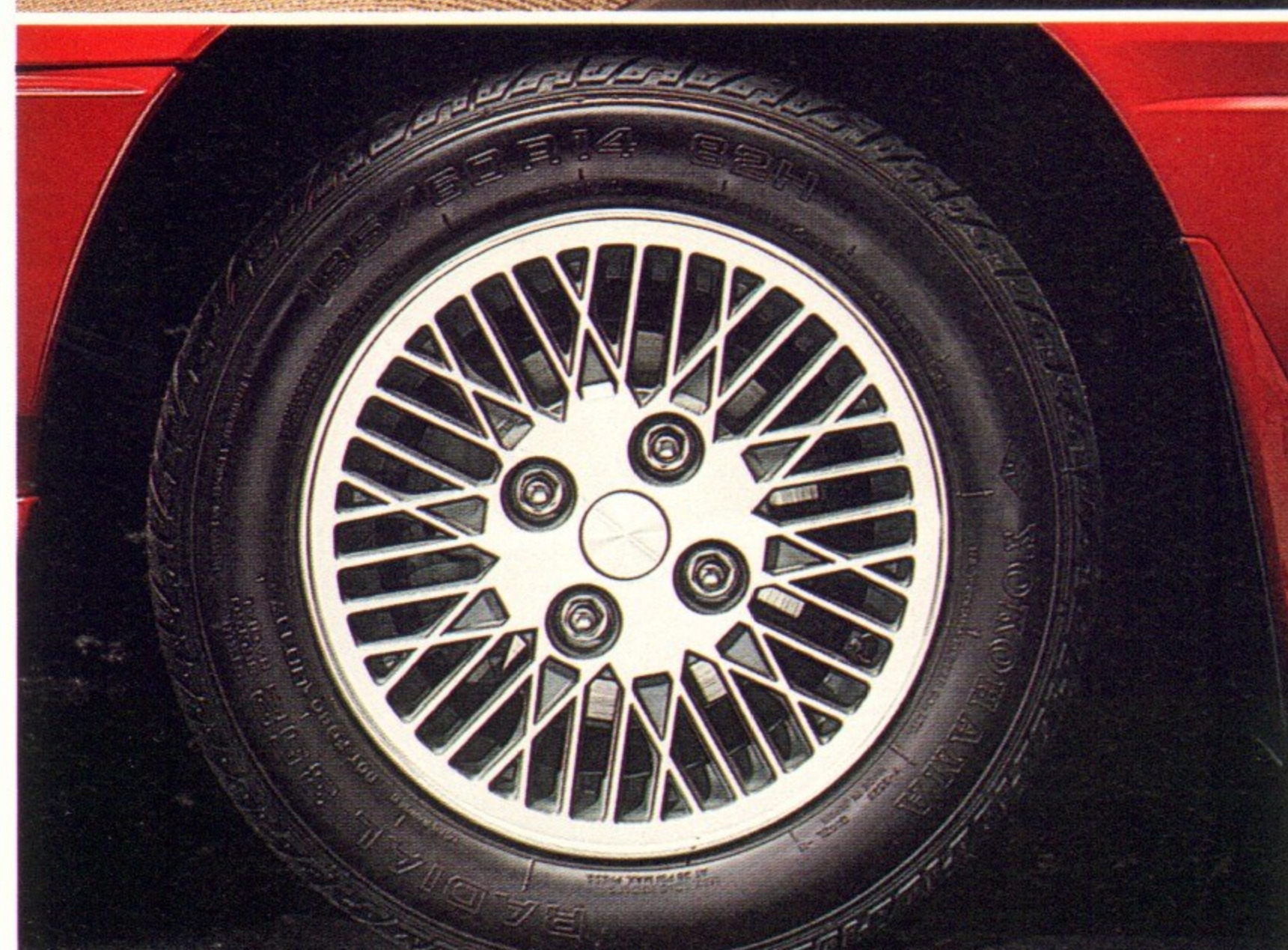
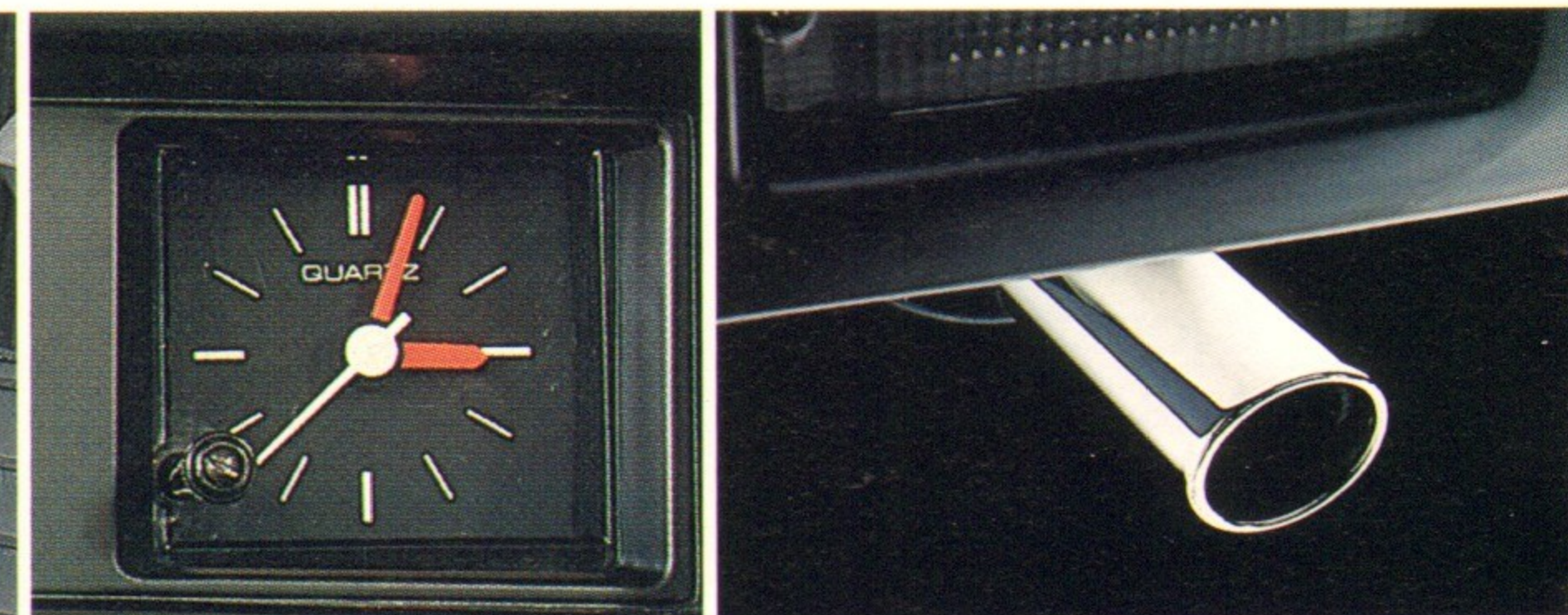
Raise the hood and see what delivers 105 horsepower and 122 lb.-ft. of torque. It's a 1.6-liter, electronically fuel injected, turbocharged engine... a powerplant obviously created for the fast lane.

The Measure of Power.

The turbo boost kicks in quickly and smoothly. To keep you informed, a Turbo Boost Gauge is prominently positioned for at-a-glance access.



M I R A G E F E A T U R E S



Opening Act.

Should you need it, each rear seat splits and folds down for expanded cargo capacity.

Not Just for Show.

Even standing still, these optional 14" Alloy wheels really show off your Mirage Turbo (only). And when it comes to road work, they're serious performers.

Drive on the Cool Side.

Breeze through summer driving with the addition of an optional dual bi-level, climate control air conditioning system.

Pocket It.

For stashing maps, books and such, there's nothing like the pockets on both front doors.

Under Lock and Key.

Only you have the key to your fuel-filler door. Or, on the Mirage 4-door, use the convenient remote release located by the driver's seat.

Prime Time Viewing.

The analog quartz clock gives you a perfect view of time at a glance.

A Fitting End.

Mitsubishi's new stainless steel exhaust system is designed for high-flow performance and long-term corrosion resistance. And the chrome tailpipe on the Turbo model adds a racy touch.

Serious Seating.

Molded to hold your body, these reclining sport bucket seats with adjustable see-through headrests make serious driving a study in comfort.



Turbo Hideout.

Back behind the rear seats there's plenty of room to carry your gear. And a rear cargo cover to conceal it.

Soothing Sounds.

Entertain yourself with the concert hall sound of our optional four-speaker, electronically tuned AM/FM stereo cassette with Dolby® noise reduction and auto-reverse.

Perfect Hind Sight.

Whatever the weather, your view in the rear is clear with our optional rear window washer/wiper and standard electric defroster on Mirage Turbo.

Automatic Operation.

Who needs to shift with Mirage's 3-speed Electronic Control (ELC™) transmission? ELC helps minimize slippage and maximize fuel efficiency.* You've got the option on Mirage 4-door.

Smooth Operator.

Effortless shifting into all five gears is a given with Mirage's short-throw/close ratio 5-speed manual overdrive transmission.

*See EPA mileage figures in specifications section.

Sunroof Optional.

Let the stars, the moon and the sun put on a show through our push-button, power sliding sunroof with integral sun shade on Mirage Turbo.

Diamond CareSM...

Our Commitment to Quality.

Diamond CareSM Mitsubishi's comprehensive new vehicle delivery program, ensures that your new Mitsubishi vehicle is thoroughly prepared, inspected and the features explained before you drive off. We even make sure that the gas tank is full before you leave. And Diamond Care does not end when you leave the dealership. After your first 1,000 miles, you are invited to return to have any problem, caused by normal vehicle use, taken care of absolutely free.

S P E C I F I C A T I O N S

Features & Options

		4-Door	Turbo
MECHANICAL			
1.5-liter, 4-cylinder engine	S	-	
1.6-liter, 105-hp turbocharged engine	-	S	
ECI™ electronic fuel injection	-	S	
Water-cooled turbine bearing housing	-	S	
Automatic spark advance at high altitudes	S	S	
Exhaust system, stainless steel	S	S	
5-speed manual overdrive transmission	S	S	
3-speed ELC™ automatic transmission	O	-	
Rack and pinion steering	S	S	
Power-assisted rack and pinion steering	O+	-	
Power-assisted front disc brakes	S	-	
Power-assisted vented front disc brakes	-	S	
Self-adjusting rear drum brakes	S	S	
Sealed brake fluid reservoir	S	S	
Independent suspension, front & rear	S	S	
Performance-tuned suspension	-	S	
Stabilizer bar, front & rear	S	S	
Maintenance-free battery	S	S	
Diamond Care SM	S	S	
12-month/12,000-mile New Car Limited Warranty*	S	S	
36-month/50,000-mile Powertrain Limited Warranty*	S	S	
36-month/36,000-mile Electronics Limited Warranty*	S	S	
5-year Anti-Corrosion Perforation Limited Warranty*	S	S	
INSTRUMENTATION & CONTROLS			
Deluxe steering wheel	S	-	
Sports-style steering wheel	-	S	
Tachometer	-	S	
Turbo boost gauge	-	S	
Resettable tripmeter	S	S	
Coolant temperature gauge	S	S	
Analog quartz clock	S	S	
Shift indicator light	S	-	
Warning lights: Brakes, Battery charge, Low oil, pressure, Door/hatch ajar, Low fuel, Low washer fluid	S	S	
Electronically tuned AM/FM stereo radio w/4 speakers	O	-	
Electronically tuned AM/FM stereo radio + cassette deck w/4 speakers	O	O	
SEATING & TRIM			
Sports type reclining bucket seats w/see-through, adjustable headrests.	S	S	
Seatback pockets	S	S	
Walk-in passenger seat release	-	S	
70/30 Split fold-down rear seatbacks	S	S	
Highback rear seats	S	-	
Rear cargo cover	-	S	
Cut pile carpeting	S	S	
Full-face cloth upholstery	S	S	
Passenger assist grips	S	S	
Door map pockets	S	S	
Cargo area pocket, quarter trim pocket	-	S	
Cloth door trim w/carpeted lower section	S	S	
Rear armrests	S	-	

		4-Door	Turbo
COMFORT & CONVENIENCE			
Air conditioning	O	O	
Dual bi-level heating/ventilation system w/4-speed fan	S	S	
Power sliding sunroof with sunshade	-	O	
Variable intermittent wiper feature	-	S	
Large center console	S	S	
Dash storage pocket	S	S	
Rear window defroster	S	S	
Visor vanity mirror	S	-	
Day/night rearview mirror	S	S	
Trunk lamp	S	-	
Keyless locking doors	S	S	
VISIBILITY			
Rear window wiper/washer	-	O	
Manual remote control dual mirrors, right side convex	S	S	
Flush-mounted halogen headlamps	S	S	
Tinted glass	S	S	
EXTERIOR			
Color-keyed front air dam extension, side sill extensions and roof spoiler	-	S	
Wide bodyside moldings	S	-	
Front mudguards	S	S	
Locking fuel filler door	S	S	
Remote fuel door and trunk release	S	-	
Remote hood release	S	S	
Bright tailpipe extension	-	S	
Black grille	-	S	
Bright grille	S	-	
Child protection rear door locks	S	-	
WHEELS & TIRES			
155SR13 all-season radial tires, BSW	S	-	
185/60HR14 high-performance radial tires	-	S	
StyLED steel wheels w/full wheel covers	S	-	
StyLED steel wheels w/hubcaps & trim rings	-	S	
14" alloy wheels	-	O	
EXTERIOR COLOR/INTERIOR TRIM			
Summit White/Brown	S	-	
Summit White/Black	-	S	
California Red/Gray	S	-	
California Red/Black	-	S	
Arctic Blue/Dark Blue	S	-	
Kaiser Silver/Gray	S	-	
Selbia Black/Black	-	S	
Palermo Gray/Black	-	S	
Dakota Sand/Brown	S	-	
Bright Silver/Dark Blue	S	-	

Technical Specifications

	Mirage 4-Door	Mirage Turbo
ENGINE		
Model No. and Type	G15B, SOHC, 4-cylinder, in-line	G32B, SOHC, 4-cylinder in-line w/turbocharger
Bore & Stroke (in./mm.)	2.97 x 3.23/ 75.5 x 82.0	3.03 x 3.39/ 76.9 x 86.0
Displacement (cu. in./c.c.)	89.6/1468	97.5/1597
Compression Ratio	9.4:1	7.6:1
Horsepower @ rpm (BHP)	68 @ 5500	105 @ 5500
Torque @ rpm (lb-ft)	85 @ 3500	122 @ 3500
Induction Type	1-2V carburetor	Electronic fuel injection
Emission Control System	EGR, air induction, 3-way catalyst w/feedback control	
CLUTCH		
Clutch Type	Single-plate, dry	
Diameter (in.)	7.24 (1.5 w/5M)	7.87 (1.6T w/5M)
TRANSMISSION RATIOS		
5-Speed Manual Overdrive	1st/3.363, 2nd/1.947, 3rd/1.285, 4th/0.939, 5th/0.777, Rev/3.083	
3-Speed Automatic	1st/2.846, 2nd/1.581, 3rd/1.000, Rev/2.176	
Final Drive Ratios	5M-3.666 3A-3.166	5M-3.666
SUSPENSION		
Front Type	Independent with struts, coil springs, 0.55-in. stabilizer bar (4-Door), 0.63-in. (Turbo)	
Rear Type	Independent with trailing arms, coil springs, telescopic shock absorbers, 0.63-in. stabilizer bar	
DIMENSIONS		
Chassis/Body Construction	All steel unibody	
Wheelbase (in./mm.)	93.7/2380	
Overall Length (in./mm.)	169.1/4295	157.3/3995
Overall Width (in./mm.)	64.4/1635	63.8/1620
Overall Height (in./mm.)	50.8/1290	
Tread Width (in./mm.)—Front	55.5/1410	
—Rear	52.8/1340	
Head Room (in./mm.)—Front	37.7/957	37.7/957 (35.9/913 w/sunroof)
—Rear	37.0/940	36.7/932 (35.8/910 w/sunroof)
Shoulder Room (in./mm.)—Front	52.8/1340	52.8/1340
—Rear	52.6/1336	54.3/1378
Hip Room (in./mm.)—Front	53.5/1358	53.5/1358
—Rear	41.2/1046	39.1/992
Leg Room (in./mm.)—Front	40.6/1030	
—Rear	30.7/780	
Cargo Capacity (cu. ft.)—EPA Index	10.9	11.7
WEIGHTS		
Curb Weight (lbs./kg.)	5M-2095/950 3A-2139/970	5M-2172/985

	Mirage 4-Door	Mirage Turbo	
STEERING			
Type	Rack and pinion		
Overall Steering Ratio	21.6:1 15.2:1 optional power assist	20.3:1	
Turning Circle, Curb to Curb (ft./m)	30.2/9.2	32.5/9.9	
BRAKES			
Front	Solid disc	Vented disc	
Rear	Self-adjusting drum		
Diameter Front/Rear (in.)	9.5/7.1	9.4/7.1	
Total Brake Swept Area (sq. in.)	232	238	
ELECTRICAL SYSTEM			
Battery	12-volt, maintenance-free		
Ignition System	Electronic		
Alternator Rating (amps)	MT-60 AT-65	MT-65	
FUEL SYSTEM			
Type Fuel Required	Unleaded (RON 91)		
Fuel Pump Type	Mechanical	Electronic	
Fuel Tank Capacity (U.S. gal.)	11.9	11.9	
WHEELS & TIRES			
Wheel Size and Type	13 x 5JJ styled steel	14 x 5.5JJ styled steel (alloy optional)	
Tire Size and Type	155/80R13 Michelin all-season steel belted radials	185/60HR14 Yokohama high performance steel belted radials	
Spare Tire Size and Type	Tempa-type		
FUEL ECONOMY**			
Model	Engine/Trans.	Federal Est. City	Federal Est. Highway
Mirage 4-Dr. Sedan	1.5L/5M	32**	37**
Mirage 4-Dr. Sedan	1.5L/3A	29**	32**
Mirage Turbo	1.6L/5M	25**	31**

**These figures are estimates only, provided by the U.S. Environmental Protection Agency (EPA).

Technical data, features, options and other equipment shown in this catalog are based on the latest available information at the time of printing and are subject to change without notice. Some vehicles are shown with optional equipment. For further information on the additional options and accessories, contact your Mitsubishi Motors Dealer. Availability at dealers of vehicles with specific features may vary. Headlights, parking lights and fog lights on vehicles lighted for illustration purposes only.

Call 1-800-447-4700 for your nearest Mitsubishi Motors Dealer.

Part #MMSA-ADV-5037. Litho in U.S.A. ©1987 Mitsubishi Motor Sales of America, Inc.

For complete details, ask your salesperson for a copy of the limited warranty.
S = Standard O = Optional
+ Available with optional automatic transmission only.



Mitsubishi. Suddenly, the obvious choice.

