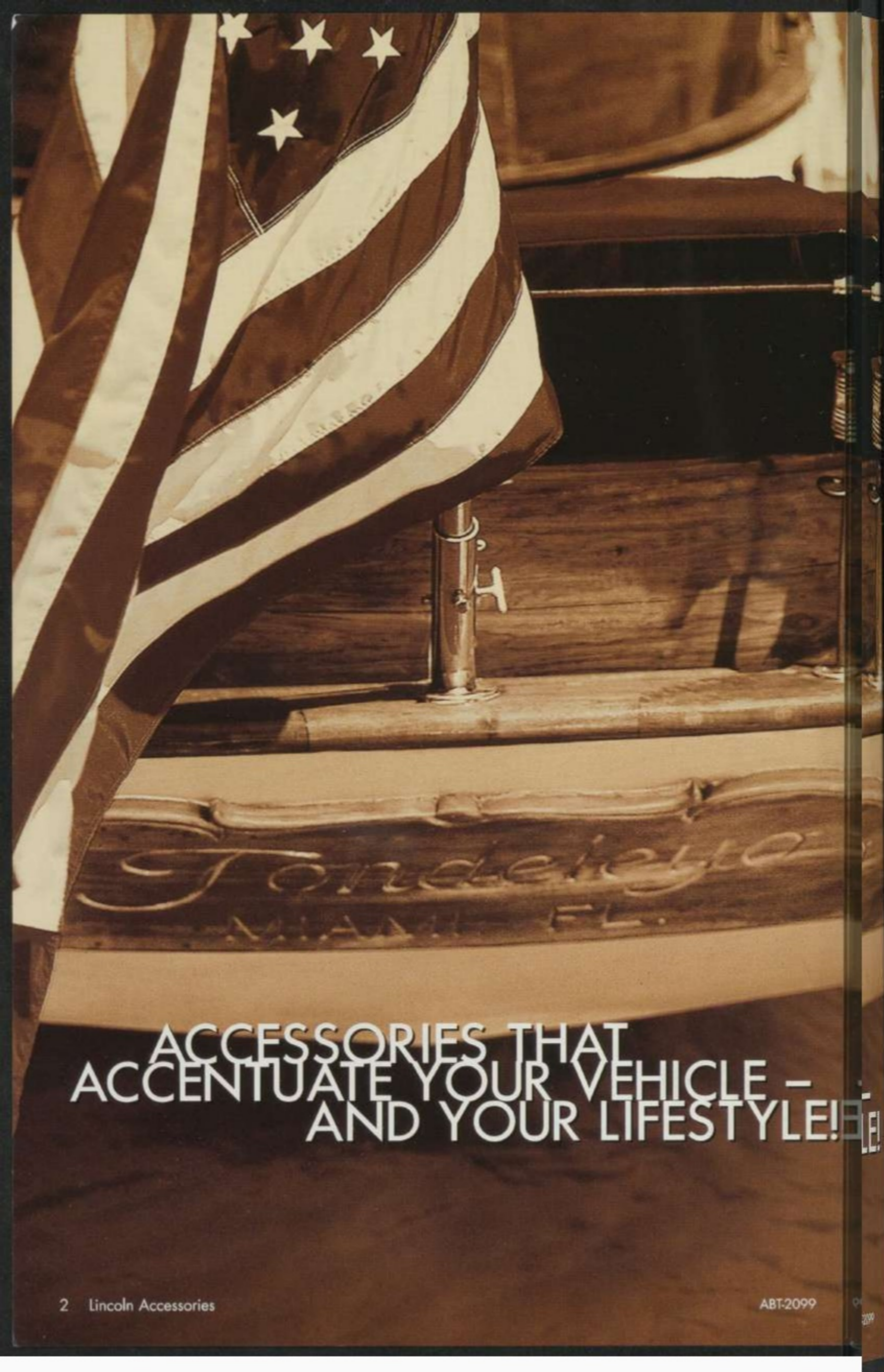


LINCOLN ACCESSORIES

AVIATOR, LS, NAVIGATOR AND TOWN CAR

2003





ACCESSORIES THAT
ACCENTUATE YOUR VEHICLE –
AND YOUR LIFESTYLE!

Think back to the reasons you bought a Lincoln. Chances are, your reasons included, styling, quality, and outstanding engineering. You looked at the competition, but you decided Lincoln best fit your needs and your lifestyle.

Well, all of these same reasons apply to genuine Lincoln Accessories. They look good, they're styled to complement the lines of the vehicle, they're engineered to fit precisely, and they're backed by a strong warranty.

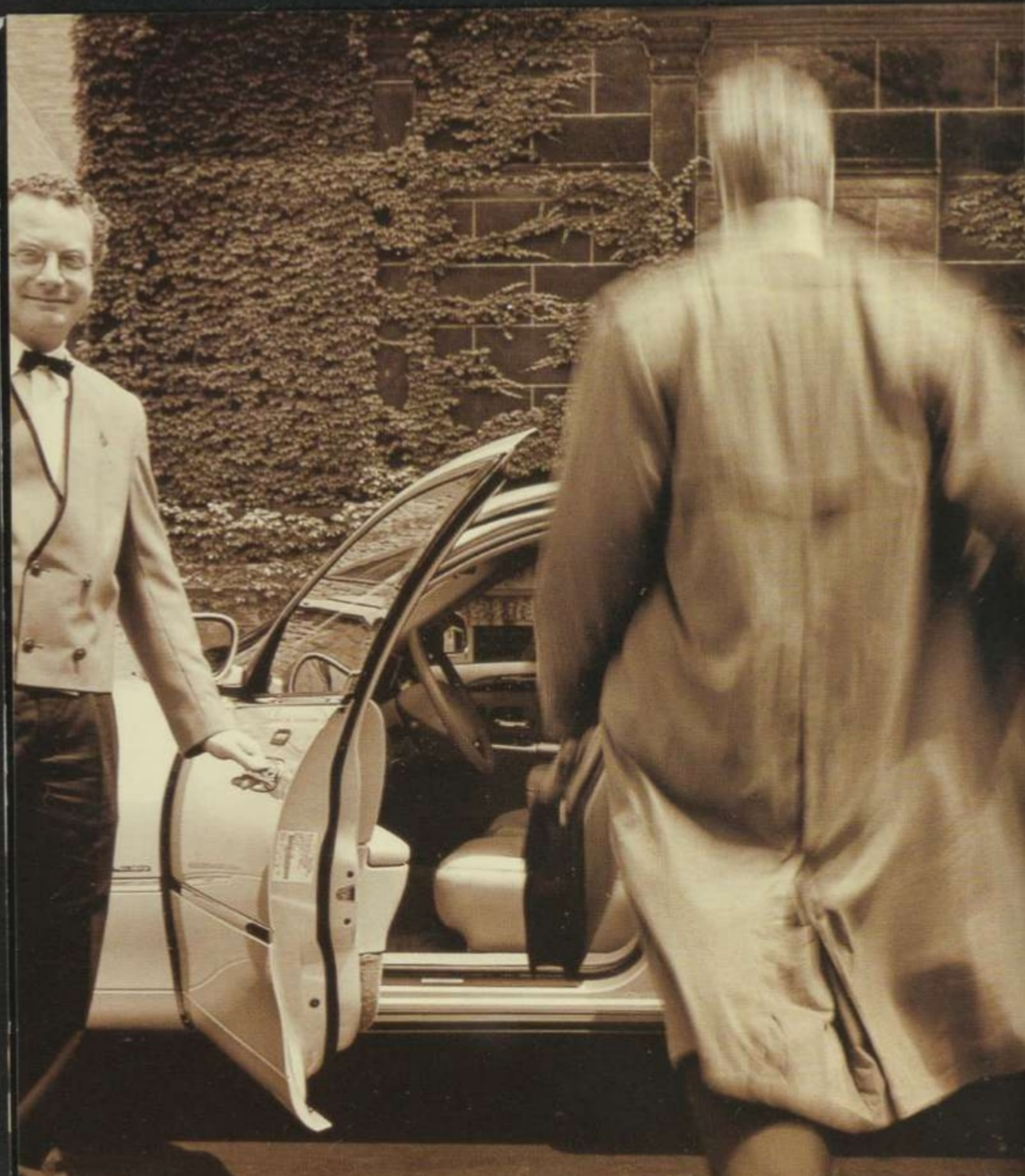
There are a lot of places that sell accessories, but only your Lincoln Dealer has genuine Lincoln Accessories.

Index

Exterior Style	04	
	12	Interior Amenities
Play Time	16	
	26	
Interior Storage	30	Safe & Secure

EXTERIOR STYLE





1, 2, 3

1. Wraparound Bug Shield*

Provides excellent front end protection. Constructed of durable GE Lexan®, with a wraparound design to complement vehicle's lines. Smoke-color accents any vehicle color. Easy to install.

Base Part No.: 16C900
Available For: Aviator and Navigator

2. Side Window Deflectors

Durable, smoke-colored acrylic deflectors keep out snow or rain while allowing you to crack open the window and let the fresh air in. Easy to install with self-stick adhesive.

Base Part No.: 18246
Available For: All

3. Moonroof Deflector

Attractive smoke-covered deflector helps reduce wind noise while letting the fresh air flow in. Installs easily.

Base Part No.: 500A26
Available For: LS and Navigator

4. Door Edge Guards

Each set is custom made to the exact contours of the vehicle. They won't sag, slip, peel or rust. Constructed of stainless steel and lined with a non-metallic material that won't scratch paint, they're easy to install. No adhesives or screws needed for installation. Available in stainless steel or matte black finish.

Base Part No.: 20910
Available For: All except LS

5. Molded Splash Guards

Deflects mud, snow, and ice away from lower body panels. Heavy-duty TPO plastic construction resists cracking. Packaged in pairs for front or rear.

Base Part No.: 16A550
Available For: All

6. Flat Splash Guards

Constructed of a durable thermoplastic and embossed with the vehicle's name or logo. Each kit includes two splash guards.

Base Part No.: 16A550
Available For: Town Car



4



5





7. Full Front End Cover

The strong heavy-duty vinyl helps protect front end from bugs, stones, and off-road debris. Flannel backing helps minimize moisture build-up between the cover and the painted surface. Custom-designed for each vehicle, its multi-piece construction allows the hood to open without removing the cover.

Base Part No.: 19A414
Available For: Navigator

8. Mini-Mask Front End Cover

This heavy-duty, ultraviolet ray-resistant vinyl cover helps keep bugs and stones from marring the vehicle's finish, and the flannel backing is gentle to painted finishes. Multi-piece design allows hood to be opened with cover on. Features embossed vehicle name or logo above driver's-side headlamp.

Base Part No.: 19A413
Available For: LS

9. Rear Roof Air Deflector in Body Color*

For sporty good looks and a factory fresh appearance. Mounts to the liftgate of the vehicle and is available in select exterior colors (or primed) to match or complement your vehicle. Dealer installation recommended.

Base Part No.: 44210
Available For: Navigator

10. Rear Spoiler*

Add a sporty look to your new vehicle with a rear spoiler. Made from ABS plastic and offered in select factory colors, these spoilers are manufactured to precise original equipment specifications. LS has third brake light. Dealer installation recommended.

Base Part No.: 44210
Available For: LS and Aviator

11. Wheel Arch Moldings

Provides additional chrome accent to the vehicle while helping to protect against minor door dings. Constructed of rugged thermoplastic, chrome plated for a high shine. Easy, no drill installation.

Base Part No.: 16268
Available For: Town Car



12. Custom Wheels*

Our custom wheels meet all Original Equipment standards and each kit includes lug nuts and a center cap. Chromed or painted aluminum 17" styles offered for LS; 16" or 17" styles offered for '02 Navigator. Note: 17" wheels are for vehicles originally equipped with 17" wheels only.

Base Part No.: 1007

Available For: LS and '02 Navigator

- a. 2W4Z-1007-AB; fits LS;
17" X 7" chromed aluminum
- b. 2W4Z-1007-CB; fits LS;
17" X 7" painted aluminum with bright machined flange
- c. 1L3Z-1007-CA; fits 2002 Navigator;
16" X 7" machined aluminum
- d. YL7Z-1007-AA; fits 2002 Navigator;
17" X 7.5" chromed aluminum
- e. YL7Z-1007-DA; fits 2002 Navigator;
17" X 7.5" painted aluminum



12 a



12 b



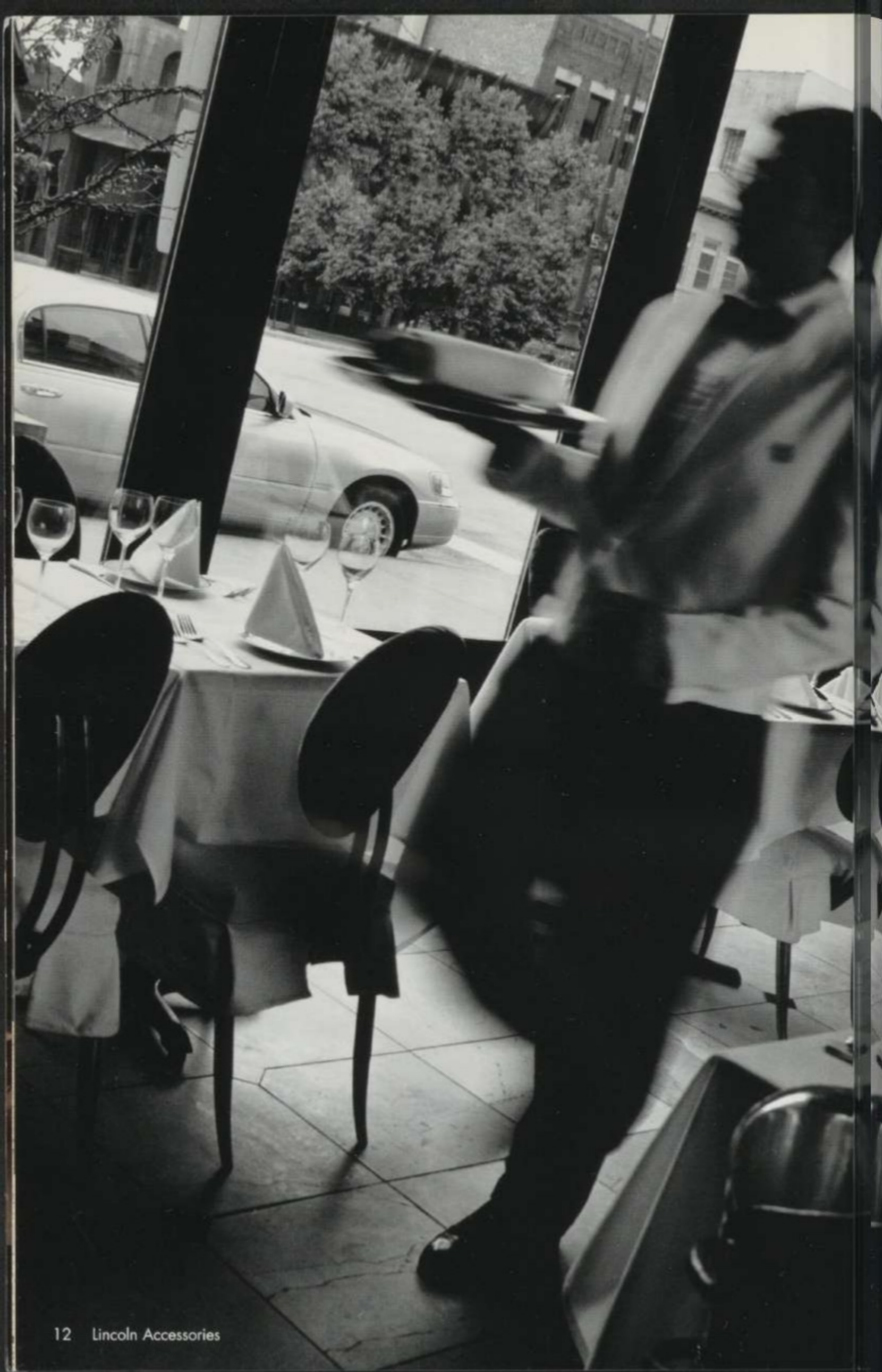
12 c



12 d



12 e



INTERIOR AMENITIES





13. DVD Rear Seat Entertainment System*

Compact all-in-one overhead DVD unit. Features a flip-down 7-inch, 16:9, LCD screen. Folds neatly into headliner when not in use. Comes with remote control and two wireless headphones. System can also play music CDs and MP3s. Available for vehicles with or without moonroof.

© 2002 Viacom International, Inc. All Rights Reserved. Nickelodeon, Nick Jr., Blue's Clues and all related titles, logos and characters are trademarks of Viacom International, Inc.

Base Part No.: 19G323
Available For: Navigator

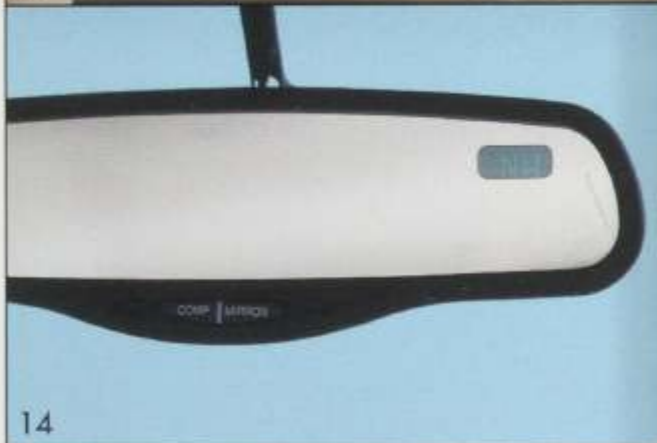


13

14. Electrochromic Compass Mirror

Ease the discomfort of headlight glare in the rearview mirror with an electrochromic mirror. Automatically dims the interior mirror when glare is detected. Features a built-in compass.

Base Part No.: 17700
Available For: LS

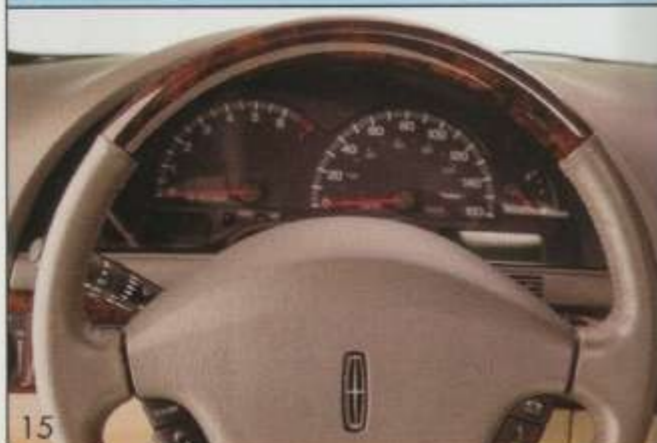


14

15. Leather/Woodgrain-Wrapped Steering Wheel

Nothing beats the feel and grip of genuine leather combined with the woodgrain accents. Available in colors to match or complement the interior. Try Motorcraft Deluxe Leather and Vinyl Cleaner (ZC-11-A) to keep the steering wheel looking great. Dealer installation recommended.

Base Part No.: 3600
Available For: LS



15

16. Gear Shift Knobs

(not shown) Replace the factory knob with an O.E. style woodgrain knob. Available for automatic transmissions only.

Base Part No.: 7213
Available For: LS

17. Carpeted Floor Mats

Custom-fit to the exact contour of each vehicle, they feature premium grade carpeting. Driver-side mats have positive retention, and all mats have a nib backing to help prevent slippage. Front mats are sold in 4-piece sets for front and rear. Full width 3rd row mats available for SUVs.

Base Part No.: 13300—front & rear sets; 13182—3rd row
Available For: All



17

18. All-Weather Vinyl Floor Mats

These heavy-duty floor mats feature deep grooves and raised ridges to catch and hold snow, slush and mud, while protecting the vehicle carpeting. They feature nibbed backing and driver-side positive retention to help keep mats in place. Available as front or rear sets in colors that complement vehicle interior.

Base Part No.: 13086—front; 13106—rear
Available For: All



18

19. Universal Carpeted Floor Mats

An economical way to protect the vehicle's carpeting. These mats are available without logo identification on the front mats. Available in a variety of colors to complement most vehicles. Most car kits include front and rear mats.

Base Part No.: 13300—4-piece; 13086—2-piece
Available For: Town Car and Navigator



19

20. Carpeted "Catch-All" Floor Mats

These mats have a molded shape that fits the exact contours of each vehicle, providing maximum coverage and floor carpet protection. Features gripper plate and driver's side positive retention to help keep mats in place. The stain-resistant carpeted surface provides easy cleaning. Front mats include an embroidered logo and driver's side heel pad. Offered in colors to complement the vehicle's interior.

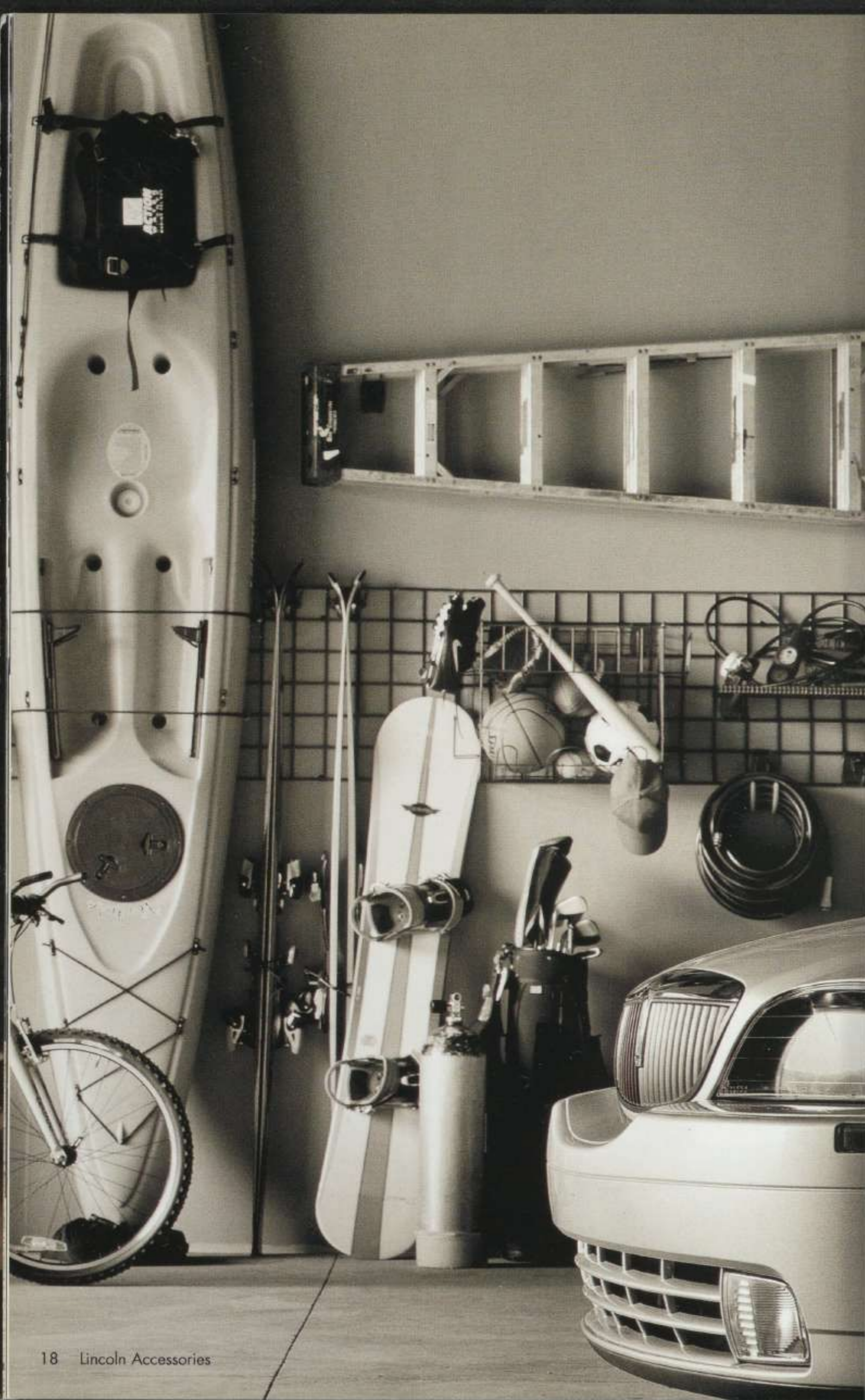
Base Part No.: 13086—front; 13106—rear pair;
13182—2nd and 3rd row 1-piece
Available For: Navigator



20



PLAY TIME



21. Removable Roof Rack by Yakima

Easy-to-use removable rack allows you to carry skis, snowboards, bikes or luggage when you purchase the carriers (sold separately). Soft, non-skid footpads help prevent damage to the roof's surface. Includes integral locks to help prevent theft.

Base Part No.: 55100
Available For: LS

22. Elliptical Cross Bars for O.E. Racks

Aviator comes factory equipped with roof rack side rails. Individually packed, elliptically-shaped cross bars allow mounting of select Yakima carriers with adapters for elliptical carriers. These include all ski/snowboard carriers, frame mount bike carriers and luggage/cargo basket carrier. Easy to install.

Base Part No.: 55100
Available For: Aviator

23. Canoe Carrier by Yakima

This carrier fits our removable roof rack, raised cross bars or track rider bars (sold separately). Not for use with factory rack. Installs easily, no tools required. Cushioned brackets help protect the gunwales of your canoe from scratches. Cargo straps can be purchased from your local sporting goods store.

Base Part No.: 55100
Available For: LS and Aviator

24. Kayak Carrier by Yakima

Designed to carry kayaks on edge while minimizing side-to-side movement. Carrier installs easily, requiring no tools. It's designed to fit the removable roof rack, raised cross bars or track rider bars (sold separately). Not for use with factory rack. Can also mount to LoadWarrior or MegaWarrior cargo racks. Cargo straps can be purchased from your local sporting goods store.

Base Part No.: 55100
Available For: LS and Aviator

25. Horizontal Ski/Snowboard Carriers by Yakima

Available in two sizes. Small carrier holds up to 4 pairs of skis or 2 snowboards; large carrier (shown) holds up to 6 pairs of skis or 4 snowboards. Both feature soft rubber padding to protect the finish on skis and integral locks. Both carriers install easily on factory roof rack, removable roof rack, track rider bars or raised cross bars; no tools necessary. Snowboard Carrier adapter included.

Base Part No.: 55100
Available For: LS, Aviator and Navigator





26. LoadWarrior by Yakima

This large, safari-style basket can carry a belly-full of gear, as well as bikes, skis, canoes or kayaks. It measures 44" x 39" x 6.5" deep (112 cm x 99 cm x 17 cm). Yakima carriers (sold separately) can be mounted directly to the LoadWarrior basket. Fits factory racks, raised cross bars, track rider bars or removable roof racks (sold separately). Add the table leaf style extension to increase LoadWarrior length by 18" (46 cm). Also, an off-road light bracket, available for SUVs only, allows mounting of two lights to the front of the LoadWarrior. Lights and extension must be purchased separately.

Base Part No.: 55100—rack and extension; 15266—light bracket
Available For: LS, Aviator and Navigator



27. MegaWarrior Luggage Carrier by Yakima

A beefy LoadWarrior, it mounts directly to factory rack, raised cross bars or track rider bars for full utility. Its large 52" x 48" x 6.5" (132 cm x 122 cm x 17 cm) dimensions make it perfect for carrying luggage or other cargo. Can also accommodate bike, ski, canoe or kayak carriers (sold separately). Includes heavy-duty cargo netting and unique, aerodynamic fairing.

Base Part No.: 55100
Available For: Aviator and Navigator



28. SportRack Cargo Boxes

Each box is constructed of a durable, black ABS plastic. The small cargo box is long & skinny and is designed to carry up to six pairs of skis, with a capacity of 11.3 cubic feet (320 liters). Our medium box is short & wide and is designed to carry larger items like suitcases. Its capacity is 15.5 cubic feet (440 liters). Our large box can carry up to four sets of golf clubs plus shoes, etc. Its capacity is 16.9 cubic feet (480 liters).

Base Part No.: 55100
All Sizes Available For: Aviator and Navigator



29. Luggage/Cargo Basket by Yakima

Constructed of a heavy-duty, vinyl-covered steel mesh, it measures 26.5" x 38.75" x 2" tall (67 cm x 97 cm x 5 cm). Includes a stretch net to secure cargo. Fits factory racks, removable roof racks, raised cross bars or track rider bars (all sold separately).

Base Part No.: 55100
Available For: LS



30. Framed Luggage Carrier

Provides an additional 10.5 cubic feet of cargo space, so take along all the extra things you need. The lightweight tubular frame is covered with durable vinyl, and the carrier has a rigid floor for added stability and easy loading. It attaches easily to factory racks and provides 100 lbs. (45 kg) of carrying capacity. Zippered side opening makes it easy to load, while the double flap-design provides water-resistance. Approximately 50" x 41" x 17" (127 cm x 104 cm x 43 cm).

Base Part No.: 198507
Available For: Aviator



31. Soft Luggage Bag

Made of durable, exterior-grade canvas. Features a zippered opening covered with a flap, which secures tightly with Velcro®. Bag is flexible, so you can carry odd-shaped items, and folds neatly away for storage when not in use. Nylon web straps secure the carrier to your roof rack.

Base Part No.: 198507
Available For: Aviator



32. Underbody Skid Plates

This original equipment kit bolts directly to pre-existing holes in the chassis and helps protect the fuel tank and transfer case from damage caused by rocks or boulders. Available for 4x4 only.

Base Part No.: 9C082
Available For: Aviator



33. Trailer Hitch Balls

Available in 1-7/8" (4 cm) or 2" (5 cm) diameters, hitch balls feature forged, one-piece construction for maximum strength. Designed with wrench flats to aid installation or removal. Corrosion-resistant chrome finish. See your dealer for towing limitations.

Base Part No.: 19F503
Available For: Aviator and Navigator

34. Trailer Hitch Drawbars Square Shank

Designed for 2" (5 cm) trailer hitch receivers and can be used in the raised or dropped position to match the trailer coupler height. Two offsets available: 0" drop/2-1/2" rise and 1-1/4" drop/4" rise. Features include a square tubular shank, heavy steel ball platform and a durable black powdercoat finish. See your dealer for towing limitations.

Base Part No.: 19A282
Available For: Aviator and Navigator

35. Class III Trailer Hitch Receiver

Bolts directly to frame using existing holes. No drilling or welding required. Designed for a gross trailer rating of 5,000 lbs. (2270 kg) with a tongue rating of 500 lbs. (227 kg). This hitch is an upgrade to original equipment and requires a new integrated hitch cover. NOTE: Towing capacity could be limited by your vehicle's drive train. See your dealer or Owner's Guide for details.

Base Part No.: 19D520
(17F000 for hitch cover)
Available For: Aviator

36. Trailer Hitch Receiver Cover

Keep dirt, mud and snow from clogging the trailer hitch receiver. Available with the Lincoln logo to fit 2" (5 cm) and 1-1/4" (3 cm) hitch receivers.

Base Part No.: 17F000
Available For: Aviator and Navigator

37. Swivel Mount Hitch Drawbar

Make hooking-up a trailer a snap with this innovative swivel mount drawbar. With it, you only need to get close to make the trailer connection. Then extend and rotate it as needed to connect to the trailer—provides up to 50 sq. in. of connection area. Once connected the automatic locking feature locks the unit into towing position. For 2" (5 cm) receivers. Does not include hitch ball. See your dealer for towing limitations.

Base Part No.: 19A282
Available For: Aviator and Navigator





38

38. Frame Mount Bike Carrier by Yakima
 Take your bike along on your next trip with these frame mount carriers. Each holds one bike and features a locking arm with a durable padding that clamps onto the downtube of the bike to protect the finish. Built-in cable guides guard against damage to brake or shifter cable. For use on original equipment or removable roof rack applications as well as track rider bars and raised cross bars.

Base Part No.: 55100
 Available For: LS, Aviator and Navigator



39

39. Fork Mount Bike Carrier by Yakima
 This easy-to-install bike rack uses a locking 9 mm long skewer, which opens to accommodate the bicycle fork, and works as a true quick-release. Each carrier holds one bike and includes an integrated lock for added security. For use with removable roof rack, raised cross bars or track rider bars (sold separately). Front wheel holder is available and sold separately.

Base Part No.: 55100 (50148 for wheel holder)
 Available For: LS and Aviator

40. ROC2®/QuarterROC® Hitch Mount Bike Carriers by Yakima

ROC2® (shown) fits into 2" (5 cm) hitch receivers and QuarterROC® fits into 1-1/4" (3 cm) receivers. Each has a swing-down feature that allows access to the rear cargo area. Holds up to two bikes. Carrier is secured to the hitch receiver with a lock system.

Base Part No.: 55100
 Available For: Aviator (QuarterROC®),
 Aviator and Navigator (ROC2®)



41

41. TerraFirma® Hitch Mount Bike Carrier by Yakima

Just like the ROC2® only this one holds up to four bikes. Fits 2" (5 cm) hitch receivers. Kit includes straps to keep bike wheels secure. Carrier is secured to hitch receiver with locking system; cable lock secures bikes to carrier.

Base Part No.: 438A38
 Available For: Aviator and Navigator



40

INTERIOR STORAGE

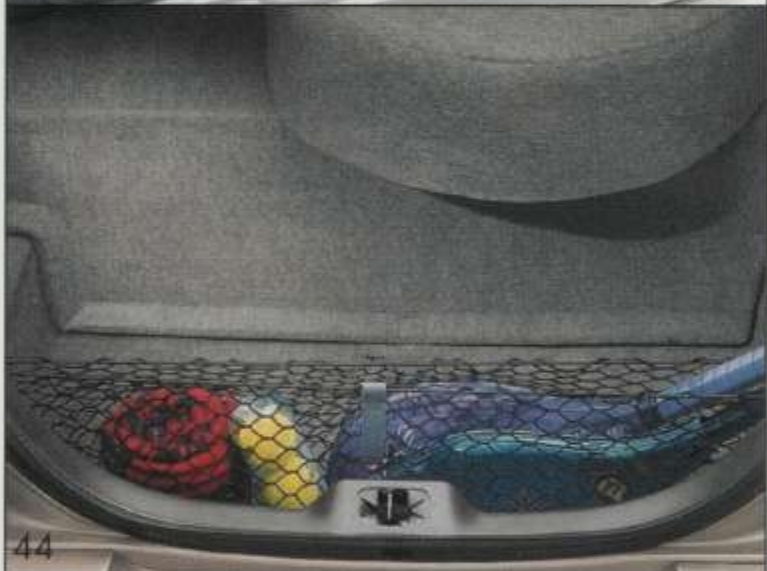




42



43



44



45

42. Soft Cargo Liner

Designed to fit the contours of the cargo area for maximum coverage and protection. The liner is constructed of durable nylon-reinforced vinyl with Velcro® fasteners for easy installation and removal. Liner is split so it can fold down with the seat (where applicable). Folds neatly for easy storage.

Base Part No.: 642A94
Available For: Navigator

43. Interior Cargo Tray

Constructed of durable polyethylene, this tray is molded to the contours of your vehicle's interior or trunk. The raised lip helps contain spills. Navigator available in colors to match interior. LS, Town Car and Aviator available in black only. Tray is lightweight, installs and removes easily without tools.

Base Part No.: 11600
Available For: All

44. Trunk/Rear Cargo Net

Envelope-style net helps keep packages and other loose items from spilling in the trunk. The net stretches easily over bulky-shaped items, and the soft, braided cording won't damage painted surfaces. Installs easily, with no tools required.

Base Part No.: 550A66
Available For: LS and Town Car

45. Trunk Cargo Organizer

Made of premium-grade polyethylene with a removable adjustable divider system that helps separate belongings. Installs easily in trunk area — no tools required. Town Car organizer fits in the deep well of the trunk with removable top panels (carpeted) that provide a flat trunk floor when in place. Also helps protect vehicle interior from spills.

Base Part No.: 115A00
Available For: LS and Town Car



46. Interior Cargo Organizer

Organize all the stuff you carry. Made of premium-grade polyethylene, with a removable and adjustable divider system that helps separate belongings. Installs easily in the cargo area with no tools required. Available in black only.

Base Part No.: 115A00
Available For: Aviator and Navigator

47. Cargo-Logic

Protect the cargo area and restrain cargo with Cargo-Logic. Liner features molded construction that provides a stain-and-moisture resistant barrier to protect cargo area floor, while L-shaped Cargo-Loks hold cargo secure. Heavy-duty looped polyware surface of liner provides ideal fastening surface for Velcro® hooks on the underside of the thermoplastic Cargo-Loks. Simply place a Cargo-Lok at diagonal corners of the cargo you're carrying and don't worry about shifting cargo. Four L-shaped Cargo-Loks supplied. Offered in colors to complement your interior. SUVs feature vehicle specific embroidered logo.

Base Part No.: 11600
Available For: Aviator and Navigator

48. Dog Guard Partition

Designed to partition the cargo area from the seating area; guard is constructed of rugged, yet lightweight steel mesh. For Navigator a fill panel (sold separately) is available to fill the space between the cargo area and rear bucket seats.

Base Part No.: 46046
Available For: Aviator and Navigator

49. Dog Guard Cargo Area Divider

A popular addition to the dog guard, divider allows you to partition the cargo area of the vehicle. Perfect for salespeople carrying samples, or for separating pets. Divider is constructed of steel and attaches directly to the dog guard (sold separately). Easy, no-drill installation.

Base Part No.: 46046
Available For: Aviator and Navigator



46



47



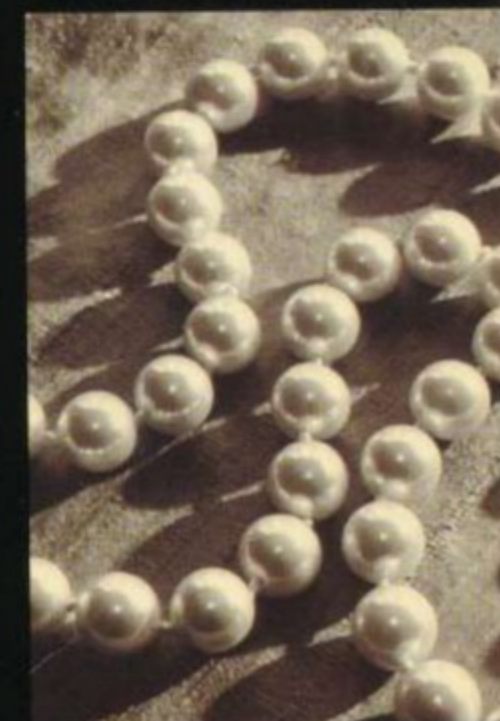
48



49



SAFE & SECURE





50. Full Vehicle Cover

NOAH® covers are constructed of a multi-layer, non-woven material that offers some measure of protection against door dings. Breathable cover resists rain, snow, acid rain, bird droppings as well as protecting the vehicle's finish from UV rays. Features double-stitched overlapped seams; elastic sewn into the front and rear hems to help hold cover in place; and non-scratch grommets can be used with a tie-down rope (included) or with a cable and lock to secure cover to vehicle. Each cover has a silk-screened logo on front and a license plate view window in rear.

Base Part No.: 19A412
Available For: All

51. Daytime Running Lights

System automatically activates the low-beams at 75% of their normal operating power whenever the ignition is in the on position. Studies show that DRL's can help reduce collisions. Dealer installation recommended.

Base Part No.: 13B218
Available For: Aviator and Navigator



52. First Aid Kit

Keep those always needed — never have — items conveniently at hand. Contains general first aid items such as a bandage assortment, gauze, anti-bacterial ointment, and more. Carrying case easily fits into the glove compartment or center console.

Base Part No.: 19F515
Available For: All



53. Vehicle Security Systems*

Protect your vehicle with a state-of-the-art security system. These systems offer a full range of security features and come complete with pocket-sized transmitters. System 4 for vehicles with factory keyless entry and System 6 for vehicles with factory power door locks. Includes a Lifetime Limited Warranty on parts (contact dealer for complete details). Dealer installation recommended. NOTE: Vehicles equipped with a security system may be eligible for insurance discounts in some states/provinces.

Base Part No.: 19A361
Available For: All

54. Remote Keyless Entry*

For vehicles equipped with power door locks, remote keyless entry allows you to lock and unlock the doors from up to 50 ft. away (15 m). System features remote illuminated entry which turns on the dome light; and a one-button personal protection panic feature that activates the vehicle's horn. Includes two hand-held remotes. Dealer installation recommended.

Base Part No.: 220K51
Available For: Town Car and Aviator



55. Wheel Locks

Replace one lug on each wheel with one of these through-hardened locks to provide added protection against theft. Chrome-plated locks (shown) available for exposed lugs; open-ended, zinc-plated locks available for hidden lugs. Kit includes four locks (one for each wheel) and key.

Base Part No.: 1A043
Available For: All

56. Air Bag Anti-Theft Locks

Kit includes specially designed locks and key to help deter theft of your driver and passenger-side air bags (LS and Aviator—driver side only). Includes a window sticker to let thieves know you're protected.

Base Part No.: 14B384
Available For: All



57. Highway Safety Kit

Convenient carrying kit includes a reflective triangle, flashlight, fire extinguisher, bungee cords, thermal blanket, cotton gloves, hose tape, multi-function knife, Phillips and slotted head screw drivers and a 12-hour light stick.

Base Part No.: 19F515
Available For: All



58. Remote Start System*

Get into a pre-warmed or pre-cooled vehicle with a remote start system. Systems start vehicle from up to 500 ft. (150 m), ensure that it's locked, and that its security system (if equipped) is armed. Comes with two long-distance remote transmitters. Three systems to choose from: Bronze for remote starting only, Silver for remote starting and keyless entry, and Gold for remote starting, keyless entry and vehicle security. Available for automatic transmissions only. Securilok® kit (sold separately) required for most applications. Dealer installation recommended.

Base Part No.: 19G364
(19G365 for Securilok®)
Available For: All



59. Locking Gas Cap

Cap attaches to the vehicle with a plastic tether to prevent loss. Swing away cover helps keep moisture and debris out of locking mechanism. Includes two keys.

Base Part No.: 9030
Available For: Aviator and Navigator



61. Reverse Parking Sensor

This sonar-like system alerts you to fixed obstacles in the way. A speaker and LED display provide audio and visual cues when an object is sensed within 6 ft. (2 m) of the bumper. The beep becomes more frequent and the lights go from green to yellow to red as the object gets closer. A red light and constant beep alert you when an object is 10" (25 cm) away. Dealer installation recommended.

Base Part No.: 15A866
Available For: LS



60. Engine Block Heater

Connect the heater to a grounded extension cord (not included) and plug in to any 110-volt power source. Engine block will stay warm for easier starting, faster warm-ups, less fuel waste, and battery drain.

Base Part No.: 6D008
Available For: LS and Aviator



62. Full Size Spare Tire

(not shown) Full size spare package includes mounted and balanced wheel, mounting hardware and trim cover. Blackwall and whitewall tires are available for Executive, Signature and Cartier models.

Base Part No.: 1K007
Available For: Town Car

2003 Lincoln Accessories Product Application Chart

Page	Product	LS	Town Car	Aviator	Navigator
7	Bug Shield, Wraparound*			•	•
28	Cargo Liner, Soft				•
29	Cargo-Logic			•	•
28	Cargo Net, Trunk/Rear	•	•		
29	Cargo Organizer, Interior			•	•
28	Cargo Organizer, Trunk	•	•		
28	Cargo Tray, Interior Molded	•	•	•	•
8	Cover, Full Front End				•
32	Cover, Full Vehicle	•	•	•	•
8	Cover, Mini-Mask Front End	•			
7	Deflector, Moonroof	•			•
9	Deflector, Rear Roof Air, Body Color*				•
7	Deflectors, Side Window	•	•	•	•
29	Dog Guard Cargo Area Divider			•	•
29	Dog Guard Partition			•	•
7	Door Edge Guards		•	•	•
34	Engine Block Heater	•		•	
33	First Aid Kit	•	•	•	•
15	Floor Mats, All-Weather Molded Vinyl	•	•	•	•
15	Floor Mats, Carpeted	•	•	•	•
15	Floor Mats, Carpeted "Catch-All"				•
15	Floor Mats, Universal Carpeted		•		•
14	Gear Shift Knobs	•			
33	Highway Safety Kit	•	•	•	•
32	Lights, Daytime Running			•	•
33	Locks, Air Bag Anti-Theft	•	•	•	•
34	Locks, Locking Gas Cap			•	•
33	Locks, Wheel	•	•	•	•
14	Mirror, Electrochromic Compass	•			
34	Parking Sensor, Reverse	•			
24	Rack, Bike Carrier, Fork Mount	•		•	
24	Rack, Bike Carrier, Frame Mount	•		•	•
25	Rack, Bike Carrier, QuarterRoc® Hitch Mount			•	
25	Rack, Bike Carrier, ROC2® Hitch Mount			•	•
25	Rack, Bike Carrier, TerraFirma® Hitch Mount			•	•
19	Rack, Canoe Carrier	•		•	
19	Rack, Elliptical Cross Bars for O.E. Racks			•	
21	Rack, Framed Luggage Cover			•	
19	Rack, Horizontal Ski/Snowboard Carrier	•		•	•
19	Rack, Kayak Carrier	•		•	
20	Rack, LoadWarrior	•		•	•
20	Rack, LoadWarrior Extension	•		•	•
20	Rack, LoadWarrior Light Bracket			•	•
21	Rack, Luggage/Cargo Basket	•			

* Eligible for residualization under a Ford Red Carpet Lease.

2003 Lincoln Accessories Product Application Chart

Page	Product	LS	Town Car	Aviator	Navigator
20	Rack, MegaWarrior			•	•
19	Rack, Removable Roof	•			
21	Rack, Soft Luggage Bag			•	
20	Rack, SportRack Cargo Box			•	•
14	Rear Seat Entertainment System, DVD*				•
33	Remote Keyless Entry*		•	•	
34	Remote Start System*	•	•	•	•
21	Skid Plates, Underbody			•	
34	Spare Tire, Full Size		•		
7	Splash Guards, Flat		•		
7	Splash Guards, Molded	•	•	•	•
9	Spoiler, Rear*	•		•	
14	Steering Wheel, Leather/Woodgrain-Wrapped	•			
23	Trailer Hitch Assembly			•	
23	Trailer Hitch Balls			•	•
23	Trailer Hitch Drawbar, Square Shank			•	•
23	Trailer Hitch Drawbar, Swivel Mount			•	•
23	Trailer Hitch Receiver Cover			•	•
33	Vehicle Security System*	•	•	•	•
9	Wheel Arch Moldings		•		
10	Wheels, Custom*	•			'02

* Eligible for residualization under a Ford Red Carpet Lease.

Limited Warranty Information

Ford Motor Company will repair or replace any properly dealer-installed Lincoln Accessory found to be defective in factory-supplied materials or workmanship during the warranty period, as well as any component damaged by the defective accessory. The accessory will be warranted for whichever provides you the greatest benefit:

- 12 months or 12,000 miles (whichever occurs first), or
- The remainder of your New Vehicle Limited Warranty.

This means that Lincoln Accessories purchased along with your new vehicle and installed by the dealer are covered for the full length of your New Vehicle Limited Warranty - 4 years or 50,000 miles (whichever occurs first). Contact your dealer for details and a copy of the warranty.

Red Carpet Lease

Many accessories purchased and installed by the dealer at lease inception can be paid for with your monthly lease payment. There may even be residual value left at the end of your lease term. See your dealer for details.

ESP PremiumCare Plan

Depending on the ESP Plan you select, many dealer-installed accessories can now be covered up to 7 years or 100,000 miles. See your dealer for details.

NOTE: The product descriptions, specifications, and pricing contained herein were correct at the time this material was being prepared for printing. However, our policy is one of continuous improvement, and we reserve the right to change design or specifications at any time without notice and without incurring obligation.

www.lincolnaccesories.com



Vehicle
Personalization

