



2003 LINCOLN LS



TABLE OF CONTENTS

FEED YOUR SOUL

03
05
10
27
30
34

PERFORMANCE

STYLE. LUXURY. BEAUTY

DESIGN

DETAILS

FACTS

PALETTE

FEED YOUR SOUL



NOURISH THE SOUL AND IT WILL NOURISH YOU.

INDULGE IT WITH

STRENGTH, BEAUTY AND LUXURY

AND IT WILL REWARD YOU WITH MORE. TRAVEL WITHIN

A WORLD WHERE POWER, PERFORMANCE AND ELEGANCE RULE. THE 2003 LINCOLN LS.

A SPORTS SEDAN ENGINEERED FOR DRIVERS WHO INSIST

ON PERFORMANCE BUT REFUSE TO SACRIFICE LUXURY AND DESIGN.

GET READY TO FEED YOUR SOUL.

PERFORMANCE



IT IS BUT ONE COMPONENT IN A PRECISELY CHOREOGRAPHED MOVEMENT

OF METAL, FUEL AND AIR. ONE COMPONENT, CAREFULLY WEIGHTED AND BALANCED

TO ENSURE ITS ROLE IN TURNING RECIPROCATING PARTS INTO

EFFORTLESS
FORWARD
MOTION.

THE LINCOLN LS

DELIVERS WITH THE CONFIDENCE OF A WORLD-CLASS COMPETITOR,

A DISPLAY OF ATHLETIC ARTISTRY THAT AWAITS YOU WITH EVERY NEW JOURNEY.



Lincoln LS V6 Premium in Black Clearcoat. Shown with available equipment.



LINCOLN ENGINEERS CONTINUE TO FIND MORE HORSEPOWER
TO SATISFY THE DRIVER'S DESIRE FOR EFFORTLESS PERFORMANCE. THE V6 IS
NOW RATED AT 232 HORSEPOWER, WHILE THE AVAILABLE 3.9-LITER 32-VALVE
V8 CHANNELS 280 HORSEPOWER AND 286 LB.-FT. OF TORQUE
TO THE REAR WHEELS THROUGH A SELECTSHIFT AUTOMATIC™
TRANSMISSION. POWER, MEET ELEGANCE.

THE LINCOLN LS IS AN AUTOMOBILE BUILT

TO EXTRACT EVERY OUNCE OF PLEASURE FROM THE ACT OF DRIVING.

ITS NEAR 50/50 WEIGHT DISTRIBUTION, PLUS A 4-WHEEL INDEPENDENT

SUSPENSION, ENSURES YOU'LL LOOK FORWARD TO EVERY SWEEPING CURVE,

AND EAGERLY ANTICIPATE EVERY FREEWAY ON-RAMP.



STYLE. LUXURY. BEAUTY.



LINCOLN HAS ELEVATED INTERIOR SPACE TO AN ART FORM. IT'S NOT SIMPLY ABOUT LUXURY,

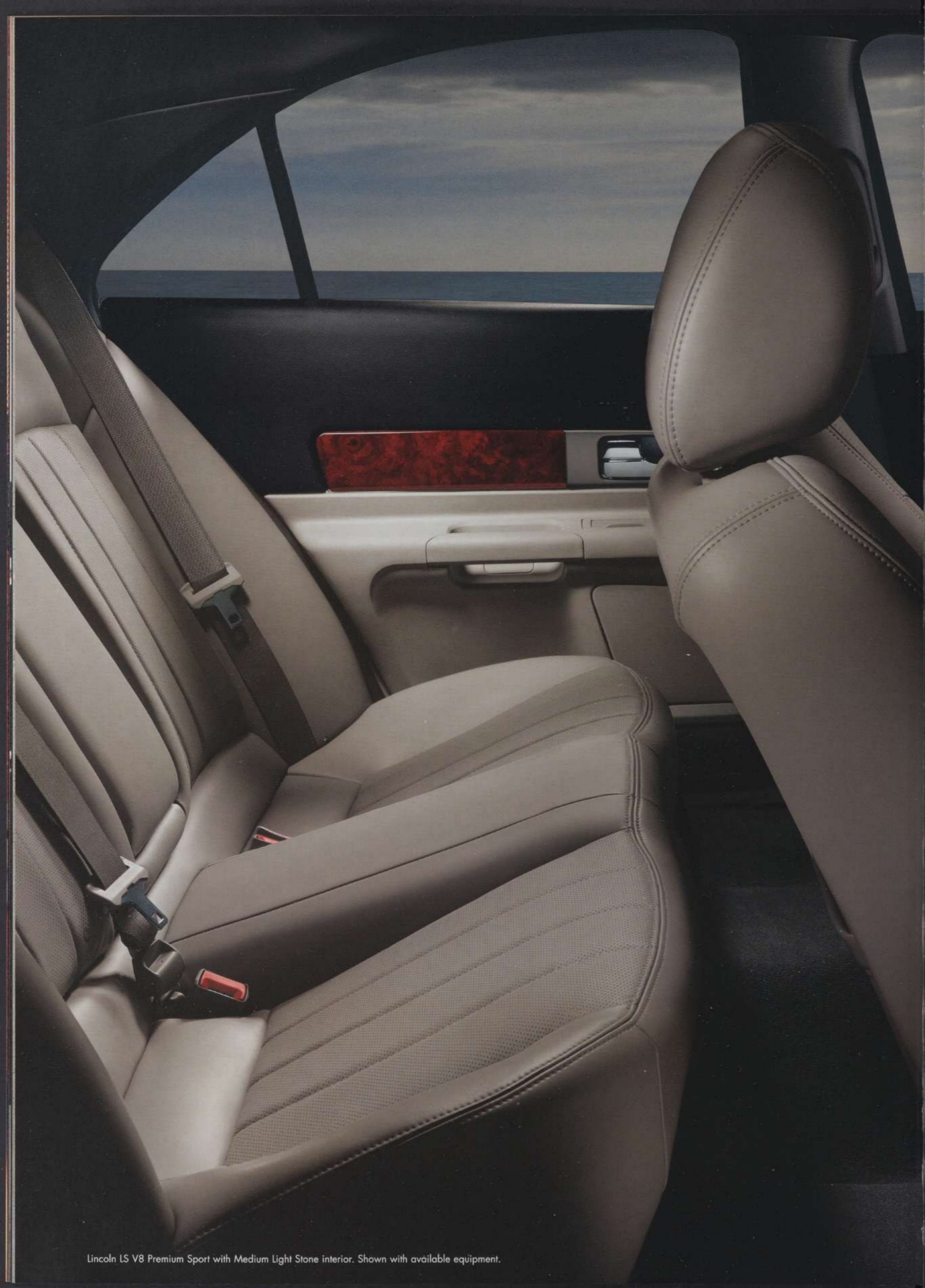
IT'S ALSO THE FEELING OF BEING

**SURROUNDED
BY BEAUTY.**

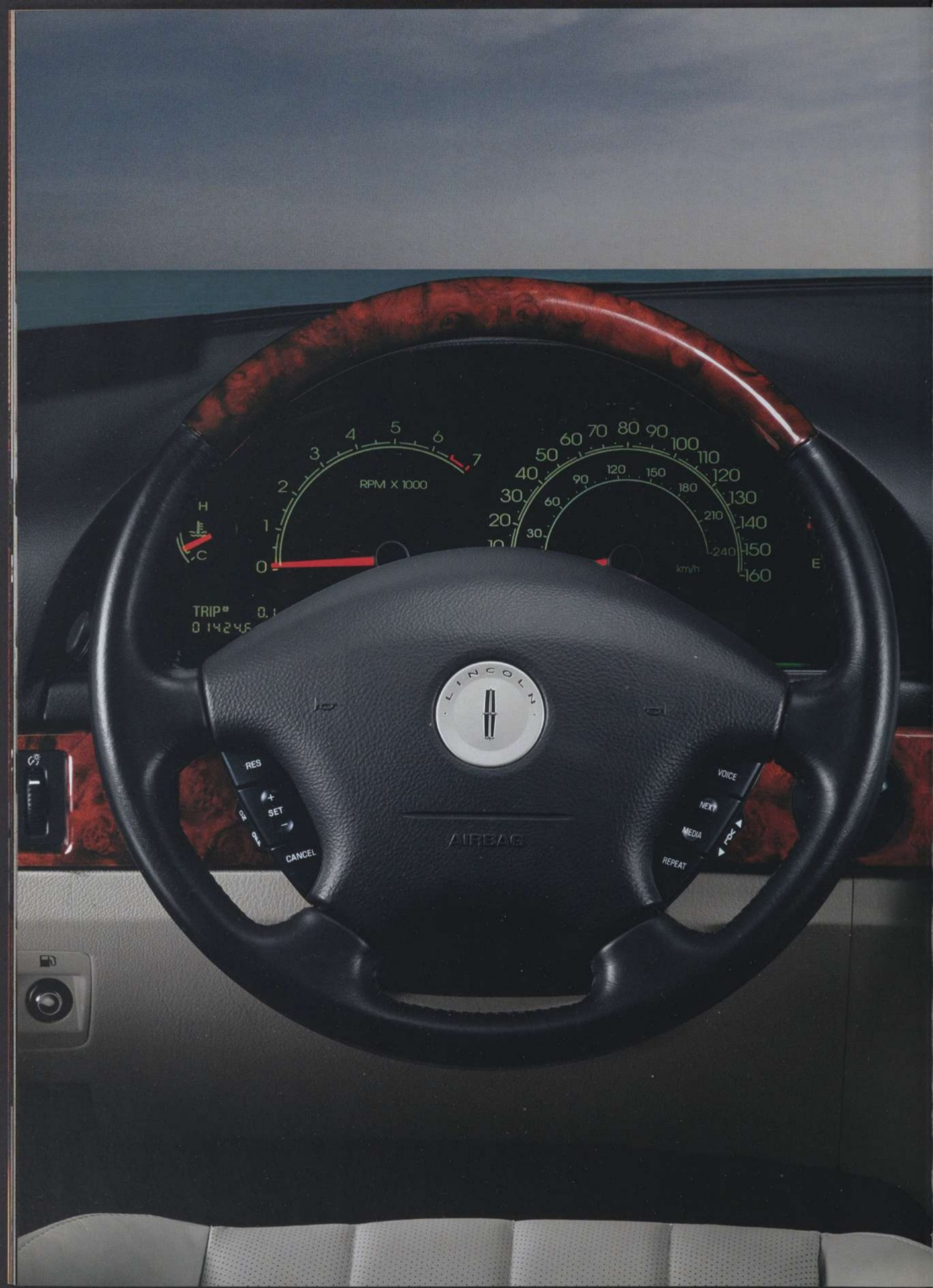
IT'S TAKING THE

PEDESTRIAN AND MAKING IT STUNNING. CREATING AN INVITING REFUGE

FROM THE OUTSIDE WORLD, ACCENTED IN WOOD AND LEATHER.



Lincoln LS V8 Premium Sport with Medium Light Stone interior. Shown with available equipment.



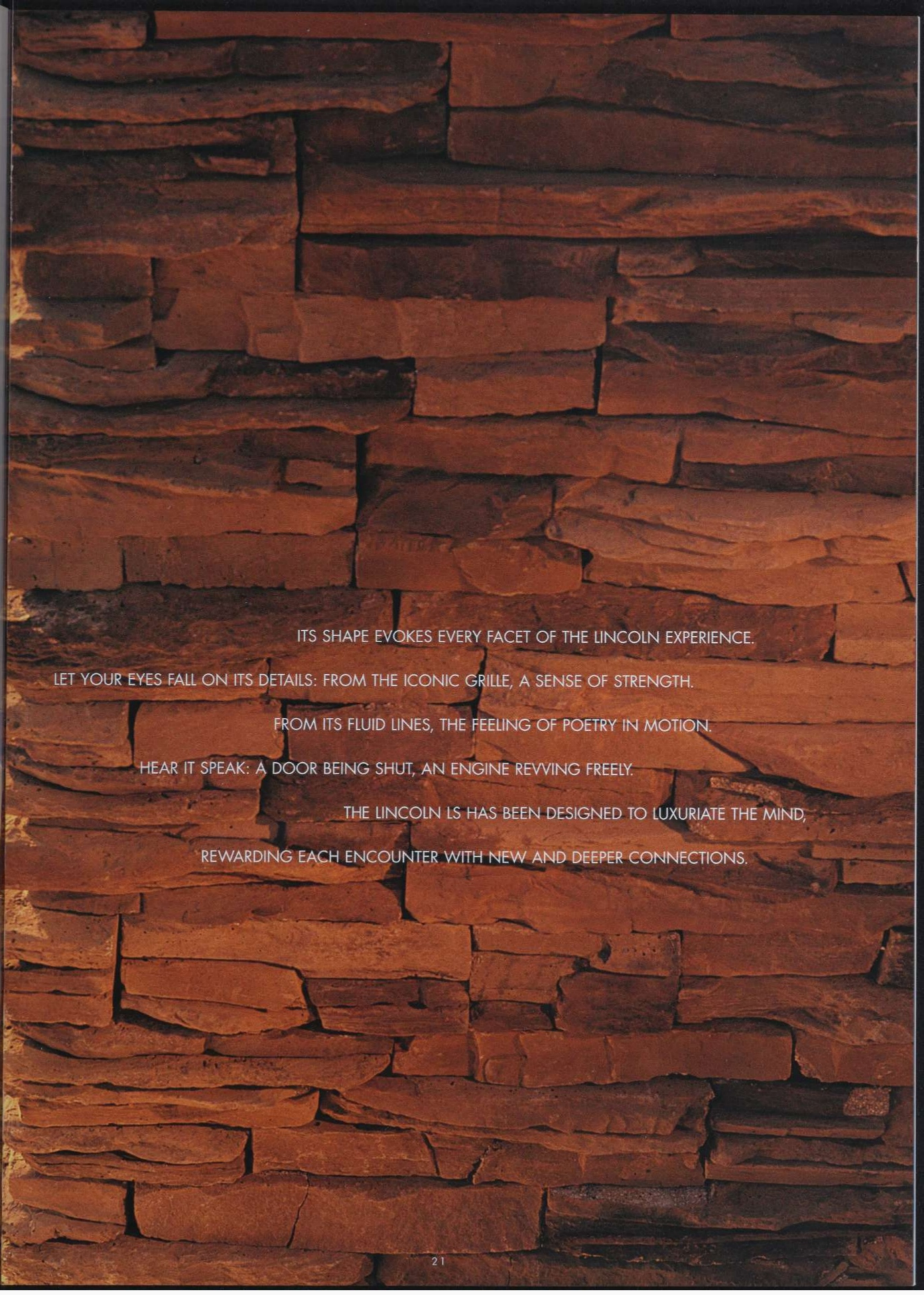


WHEN YOU ARE A LEGEND, IT IS IMPORTANT TO KNOW WHAT TO TAKE WITH YOU
TO REDEFINE YOURSELF. WHAT HAS MADE YOU GREAT, AND WHAT YOU CAN REINVENT
TO MAKE YOURSELF BETTER. THE LINCOLN GRILLE.

AN
AMERICAN
ICON. SCULPTED FROM THE PAST

TO CREATE A NEW CLASSIC. SETTING THE TONE FOR THE EXTERIOR. CHALLENGING

OUR DESIGNERS TO CREATE AN EQUALLY TIMELESS AUTOMOTIVE DESIGN.



ITS SHAPE EVOKES EVERY FACET OF THE LINCOLN EXPERIENCE.

LET YOUR EYES FALL ON ITS DETAILS: FROM THE ICONIC GRILLE, A SENSE OF STRENGTH.

FROM ITS FLUID LINES, THE FEELING OF POETRY IN MOTION.

HEAR IT SPEAK: A DOOR BEING SHUT, AN ENGINE REVVING FREELY.

THE LINCOLN LS HAS BEEN DESIGNED TO LUXURIATE THE MIND,

REWARDING EACH ENCOUNTER WITH NEW AND DEEPER CONNECTIONS.



THE LINCOLN LS IS NOT
SIMPLY A LUXURY SEDAN,
IT'S A SPORTS SEDAN
OF PRECISION, STRENGTH
AND BEAUTY, DESIGNED FOR
THOSE WHO SAVOR
THE EXQUISITE INTERPLAY
BETWEEN A CAR, A DRIVER
AND AN OPEN ROAD.



EXCEPTIONAL PERFORMANCE, CONFIDENT DESIGN, AND AN INSPIRED INTERIOR STYLE.

EACH THOUGHTFULLY COMBINED BY A NEW GENERATION OF

LINCOLN ENGINEERS TO CREATE

AN IDEAL VISION

OF AMERICAN LUXURY. THE LINCOLN LS,

A HIGH-PERFORMANCE SEDAN THAT REMAINS TRUE TO A

HERITAGE OF STYLE AND DESIGN. TREAT YOUR SOUL. TRAVEL WELL.

LINCOLN OFFERS A 4-YEAR/50,000-MILE BUMPER-TO-BUMPER LIMITED WARRANTY COVERING REPAIRS, REPLACEMENT, OR ADJUSTMENT OF ALL PARTS DEEMED DEFECTIVE IN MATERIALS OR WORKMANSHIP AT NO OUT-OF-POCKET COST TO YOU.¹

STANDARD WITH ALL 2003 LINCOLN VEHICLES IS OUR 3-YEAR/36,000-MILE COMPLIMENTARY MAINTENANCE—A NO CHARGE, SCHEDULED SERVICE PLAN CONDUCTED AT 5,000-MILE OR 6-MONTH INTERVALS, WHICHEVER OCCURS FIRST, IN ACCORDANCE WITH YOUR VEHICLE'S SCHEDULED MAINTENANCE GUIDE.¹

¹SEE YOUR DEALER FOR MORE DETAILS.



The Lincoln LS V6 Premium, V8 Sport and V8 Premium Sport welcome their fortunate owners into a cabin trimmed with perforated leather seat inserts. The heated/cooled front seats are the epitome of comfort. Heated rear seats are available on V6 Premium, V8 Sport and V8 Premium Sport models.

You can see it in its eyes: the engineering precision of the Lincoln LS includes available High Intensity Discharge (HID) headlamps. The advanced technology of HID lighting improves illumination of the road during nighttime driving by providing brighter, whiter light. In addition, HID headlamps have a longer life and require less maintenance.



NEAR 50/50 WEIGHT DISTRIBUTION IN THE LINCOLN LS IS RESPONSIBLE FOR ITS EXCELLENT FRONT-TO-REAR BALANCE. A SHORT- AND LONG-ARM SUSPENSION WITH ANTI-DIVE/ANTHIPT GEOMETRY ALSO ALLOWS THE VEHICLE TO STAY CLOSE TO THE ROAD.

THE AVAILABLE ADVANCETRAC™ VEHICLE STABILITY ENHANCEMENT SYSTEM OFFERS HIGHLY INTELLIGENT TRACTION TECHNOLOGY, MONITORING EVERYTHING FROM SPEED TO ROAD CONDITIONS TO VEHICLE STEERING.



What could make driving the Lincoln LS better than the clear, acoustic precision of its audio system. Audio options include a standard 4-speaker premium sound system with an AM/FM stereo/cassette/single CD player. For the true audiophile, V6 Premium, V8 Sport and V8 Premium Sport are available with a 10-speaker, 264-watt THX®-Certified Car Audio System¹, which includes an AM/FM stereo and 6-disc in-dash CD changer for clear, crisp sound quality.

¹Offered only as combined THX®-Certified Car Audio System and Navigation System.



The Lincoln LS is equipped with second generation driver and front-passenger airbags.¹ But we also offer standard side-impact head/chest airbags. Concealed in the front seat side bolsters, sensors mounted on each side of the vehicle govern the airbags' deployment.

¹Always wear your safety belt and secure children in the rear seat.

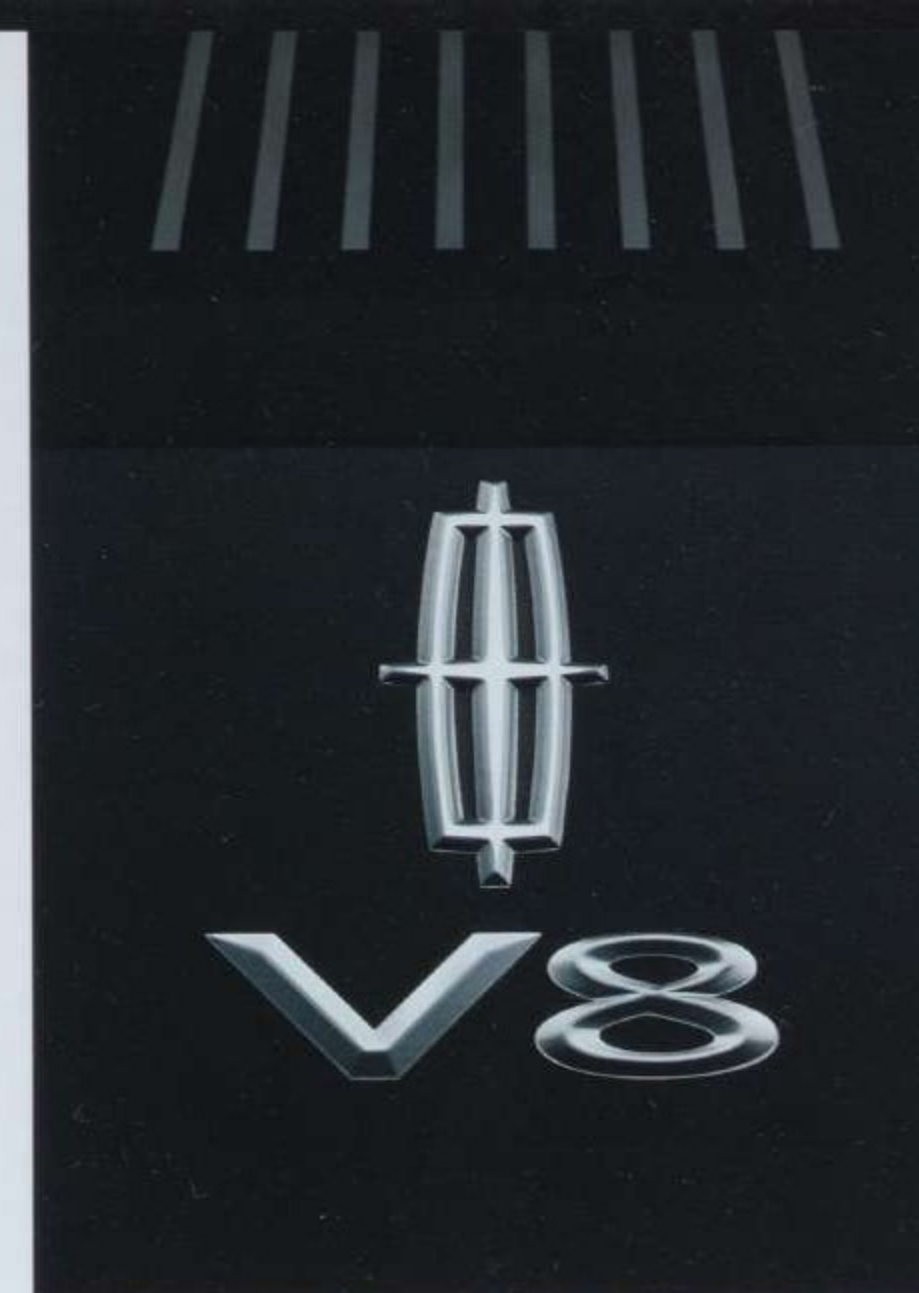


ALL-SPEED TRACTION CONTROL IS STANDARD ON THE 2003 LINCOLN LS AND HELPS MAINTAIN TRACTION ON SLIPPERY SURFACES BY ELECTRONICALLY MODULATING ENGINE TORQUE AND BRAKE BEHAVIOR TO LIMIT WHEEL SPIN, WHILE ABS DETECTS AND HELPS TO PREVENT WHEEL LOCKUP.

THE AVAILABLE DUAL DRIVER'S SEAT MEMORY SETTINGS ALLOW YOUR CHOICE OF TWO DIFFERENT PRESET POSITIONS. FOR FURTHER COMFORT AND CONVENIENCE, THE DRIVER'S SEAT MOVES BACK WHILE THE STEERING COLUMN MOVES UP—SIGNIFICANTLY CONTRIBUTING TO EASE OF ENTRY AND EXIT.

FOR A FEELING OF ELEGANCE, THE 2003 LINCOLN LS IS AVAILABLE WITH A RICH WOOD-GRAINED AND LEATHER-WRAPPED STEERING WHEEL. IT ALSO FEATURES A POWER-TILT AND TELESCOPING COLUMN.

BECAUSE DRIVERS COME IN VARYING SIZES, POWER-ADJUSTABLE BRAKE AND ACCELERATOR PEDALS CAN MOVE OVER TWO INCHES TO PROVIDE THE MOST COMFORTABLE DRIVING POSITIONS POSSIBLE.



For drivers demanding the highest performance, there's a 3.9-liter DOHC 32-valve V8 with 280 horsepower. The Lincoln LS is also available with a highly responsive DOHC 24-valve, 232-horsepower V6. The engine blocks are cast with the patented Cosworth-casting process, yielding a lightweight, durable and highly efficient powerplant creating a truly impressive performance.



This is no ordinary key. This electronically coded ignition key is the hub of the Lincoln LS SecuriLock[®] passive anti-theft system. It prevents ignition bypass by allowing only the correctly coded key to start the vehicle. The security system is also armed once the key is removed from the ignition and disarmed only with the correctly coded key.

A standard Anti-lock Brake System (ABS) is enhanced with Electronic Brake Force Distribution that helps give the driver added control in hard braking conditions and improved steering control during severe braking maneuvers.

And the Emergency Brake Assist feature can help reduce stopping distances in emergency situations.



PAINTED. POLISHED. MACHINED. CHROMED. LINCOLN LS MODELS FEATURE SIX DISTINCT WHEEL STYLES, EACH IS MADE FROM A LIGHTWEIGHT ALUMINUM ALLOY, AND EACH IS A REFLECTION OF THE UNIQUE PERSONALITY OF LINCOLN LS MODELS. THE V6 COMES STANDARD WITH 16-INCH, 7-SPOKE PAINTED WHEELS, WHICH ARE ALSO AVAILABLE IN A POLISHED FINISH. THE V6 PREMIUM COMES STANDARD WITH 16-INCH, 11-SPOKE PAINTED WHEELS, WHICH ARE ALSO AVAILABLE WITH A CHROME FINISH. THE V8 SPORT COMES STANDARD WITH 17-INCH, 7-SPOKE MACHINED FINISH WHEELS. AND THE V8 PREMIUM SPORT IS FITTED WITH 17-INCH, 8-SPOKE CHROME FINISH WHEELS.



Lincoln's own SelectShift Automatic[™] transmission is included with Lincoln LS V8 Sport and V8 Premium Sport models. This feature gives you the control of a manual transmission with the convenience of an automatic.

Lincoln LS is available with a voice-activated, touch-screen Navigation System¹ that combines DVD-based mapping technologies with a satellite-based Global Positioning System (GPS) to calibrate where you are and guide you to your destination with both a map display and voice commands.

¹Offered only as combined THX[®]-Certified Car Audio System and Navigation System.



STANDARD ON LINCOLN LS V8 MODELS, THE ELECTRONIC MESSAGE CENTER PROVIDES A CONVENIENT WAY TO OBTAIN PERTINENT INFORMATION ON MAINTENANCE REQUIREMENTS, VITAL ENGINE SYSTEMS, FUEL AVAILABILITY AND VARIOUS FLUID LEVELS.

SPECIALLY ENHANCED SENSORS ON THE 2003 LINCOLN LS DETECT MOISTURE ACCUMULATION ON THE WINDSHIELD AND AUTOMATICALLY ACTIVATE SLOW OR FAST WIPER MOTION ACCORDINGLY. THESE MOISTURE-SENSITIVE WINDSHIELD WIPERS¹ WORK IN ANY KIND OF WEATHER.

¹NOT AVAILABLE ON STANDARD V6 BASE MODELS.

DRIVETRAIN

ENGINE		
LAYOUT		Front engine, rear-wheel drive
TYPE	V6	DOHC 24-valve V6 with aluminum block and cylinder heads
	V8	DOHC 32-valve V8 with aluminum block and cylinder heads
DISPLACEMENT	V6	3.0 liter/181 cu. in.
	V8	3.9 liter/240 cu. in.
BORE & STROKE	V6	89.0 mm x 79.5 mm/3.5 in. x 3.13 in.
	V8	86.0 mm x 85.0 mm/3.39 in. x 3.35 in.
COMPRESSION RATIO	V6	10.5:1
	V8	10.75:1
HORSEPOWER	V6	232 @ 6750 rpm (SAE net)
	V8	280 @ 6000 rpm (SAE net)
TORQUE	V6	220 lb.-ft. @ 4500 rpm (SAE net)
	V8	286 lb.-ft. @ 4000 rpm (SAE net)
FUEL DELIVERY		Sequential multi-port electronic fuel injection
FUEL REQUIREMENT		91 octane (recommended)
COOLING SYSTEM		Fail-safe cooling
IGNITION		Coil-on-plug integrated electronic ignition system
EXHAUST SYSTEM		Full dual exhaust with separate catalytic converters, mufflers and resonators for each cylinder bank
TRANSMISSION		
TYPE	V6	5-speed electronic automatic overdrive
	V8	SelectShift Automatic™ transmission

CHASSIS

BODY		Unitized construction with front and rear subframes
SUSPENSION	Front	Independent, aluminum Short- and Long-Arm with coil-over shock design, tubular stabilizer bar and anti-dive geometry
	Rear	Independent, aluminum Short- and Long-Arm with coil-over shock design, solid stabilizer bar and anti-lift geometry
SHOCK ABSORBERS	Front	Gas-charged hydraulic twin tube with integrated rebound springs
	Rear	Gas-charged hydraulic twin tube with integrated rebound springs
STEERING	Type	Speed-sensitive variable power-assisted rack-and-pinion
	Turns, lock-to-lock	3.0
	Turning circle, curb-to-curb	38.1 ft. diameter



WHEELBASE		114.5 in.
TRACK	Front	60.6 in.
	Rear	60.7 in.
BRAKES	Front	Power anti-lock with vented discs (300 mm dia.) and dual-piston calipers
	Rear	Power anti-lock with vented discs (288 mm dia.) and single-piston calipers
WHEELS	V6	16-inch aluminum 7-spoke painted
	V8	17-inch aluminum 7-spoke machined
TIRES	V6	P225/55VR16
	V8	P235/50VR17

ACCOMMODATIONS AND DIMENSIONS

HEADROOM (in.)	40.5 front; 37.3 rear	OUTSIDE DIMENSIONS (in.)	56.1 height; 80.1 width (including mirrors); 193.9 length
HEADROOM (in.)	38.6 front; 36.7 rear ¹	FUEL CAPACITY (gal.)	18.0
LEGRoom (in.)	42.8 front (max.); 36.0 rear (min.)	CARGO VOLUME (cu. ft.)	13.5
HIPROOM (in.)	53.0 front; 54.7 rear		
SHOULDER ROOM (in.)	57.6 front; 57.0 rear		
CURB WEIGHT	V6 Base: 3720 lb.; V8 Sport: 3811 lb.		
EPA MILEAGE ESTIMATES	V6 with 5-speed automatic transmission	20 (city); 26 (highway)	
	V8 with 5-speed SelectShift™ transmission	18 (city); 25 (highway)	



Wheels shown clockwise from top: 17-inch 8-spoke chrome finish, 16-inch 11-spoke chrome finish, 16-inch 7-spoke painted finish, 16-inch 7-spoke polished finish, 16-inch 11-spoke painted finish, 17-inch 7-spoke machined finish.

LINCOLN LS

All models of the Lincoln LS are equipped with the following standard equipment:

ACCESSORY DELAY—for power windows and moonroof ²	LIGHTS—front fixed reading lamps, instrument panel courtesy lamp, rear directional reading lamps and luggage compartment light
AIR CONDITIONING—Dual-Zone Electronic Automatic Temperature Control with driver and front passenger controls	LOCKS—power door, SmartLock™ anti-lockout system and child-safety locks on rear doors
AIRBAGS—driver and front passenger dual-stage front airbags and seat-mounted side-impact head/chest airbags ³	LOWER ANCHORS AND TETHER ANCHORS FOR CHILDREN (LATCH)—rear, 2 outboard lower anchors and 3 upper tether anchors
ALARM—perimeter with LED indicator	MAP POCKETS—located on all doors
ALL-SPEED TRACTION CONTROL	MIRROR—day/night rearview
ANTI-INTRUSION SIDE DOOR BEAMS	MIRRORS—power heated, fixed exterior mirrors with security approach lamps
ANTENNA—concealed antenna	PARTICULATE AIR FILTRATION SYSTEM
ARMRESTS—full-length door trim; front center sliding; rear seat fold-down with 2 cupholders	PERSONAL SAFETY SYSTEM™—dual-stage driver and front passenger airbags ³ , crash severity sensor, front safety belt usage sensors, driver's seat position sensor, front safety belt pretensioners and energy-management safety belt retractors
ASHTRAY—illuminated front ashtray with lighter	POWER-ADJUSTABLE FOOT PEDALS—brake and accelerator pedals that adjust over 2 inches at the touch of a button
BATTERY SAVER	POWER POINTS—12-volt outlets located in ashtray and inside center floor console
BELT-MINDER® SYSTEM—for driver and front passenger seat positions	RADIO—premium sound system with AM/FM stereo/cassette/single CD player, 4 speakers and digital clock
BRAKE LIGHTS—high-mounted center LED brake light	REMOTE KEYLESS ENTRY SYSTEM—2 key fobs with panic alarm and illuminated entry
BRAKE SHIFT INTERLOCK—requires brake to be fully depressed before shifting out of Park	SAFETY BELTS—3-point restraints for all seating positions; front seat height-adjustable D-rings with safety belt pretensioners
BRAKES—power 4-wheel ventilated disc Anti-lock Brake System (ABS) with emergency brake assist	SEATS—60/40 split fold-down rear seat with integrated head restraints
BUMPERS—color keyed 5 mph impact with chrome inserts	SEATS—leather seating surfaces with front bucket seats and 2-way head restraints; 8-way power driver and 6-way power front passenger seats with manual lumbar support
CENTER STACK—with Satin Nickel trim	SECURILOCK®—passive anti-theft system
CONSOLE—front center console with floor shifter, storage bin and 2 integrated cupholders	SHIFTER KNOB—leather wrapped
CUPHOLDERS—2 integrated front and 2 rear	SPEED CONTROL—fingertip controls with tap-up/tap-down feature
DECKLID—remote release	STEERING COLUMN—power tilt and telescoping
DEFROSTER—rear window	STEERING WHEEL—4-spoke leather wrapped with audio and speed controls
ENGINE—3.0L 24-valve DOHC V6 engine with variable cam timing and electronic throttle control	TAILLAMP—2-tone white/red complex reflector
EXHAUST SYSTEM—dual exhausts with chrome tips	TIRES—P225/55VR16 black sidewall all-season with 16-inch mini-spare
FLOOR MATS—carpeted front and rear	TRANSMISSION—5-speed electronic automatic overdrive
FOG LAMPS—mounted in lower front fascia	TRUNK—phosphorescent manual emergency trunk release inside trunk
GLASS—solar tinted	TRIM—black lacquer interior with Satin Nickel accents
GLOVE BOX—illuminated and locking	VISORS—with dual illuminated vanity mirrors and secondary visors
GRAB HANDLES—3 with coat hooks in rear	WHEELS—16-inch 7-spoke painted aluminum
GRILLE—chrome with Medium Platinum vertical bars	WINDOWS—power with express up/down driver and front passenger windows with Global Open/Close on all windows and moonroof ² ; may be opened with the key or key fob and closed with the key
HEADLAMPS—complex reflector with clear lens and automatic on/delay off feature	WINDSHIELD WIPERS—speed-sensitive, variable intermittent front wipers with heated park position
HEADLINER—textured fabric	
ILLUMINATED SWITCHES—steering wheel, instrument panel and front door switches	
INSTRUMENT CLUSTER—analog speedometer, tachometer, dual trip odometers, check fuel cap lamp, low oil pressure warning lamp, and engine temperature and fuel gauges	
KEYLESS ENTRY KEYPAD—located on driver's door	
KEYS—valet key, single key for door/ignition	

LINCOLN LS V6 PREMIUM EQUIPMENT

In addition to or in place of the Lincoln LS Standard Equipment, the Lincoln LS V6 Premium Equipment includes the following:

CARGO NET	SEATS—heated and cooled front seats with Premium perforated leather seating surfaces
HOMELINK™ UNIVERSAL TRANSCEIVER—includes garage door opener	SEATS—front, power lumbar support
MEMORY FEATURE—for power-adjustable foot pedals, driver's seat, steering column and exterior mirrors	SHIFTER KNOB—wood
MIRROR—electrochromic (auto-dimming) rearview mirror with compass	STEERING WHEEL—wood and leather wrapped
MIRRORS—folding exterior mirrors with electrochromic (auto-dimming) driver's side	TRIM—American Walnut Burl wood trim with Satin Nickel accents
MOONROOF—power	WHEELS—16-inch 11-spoke painted aluminum
RADIO—Audiophile Sound System with 180-watt AM/FM stereo/6-disc in-dash CD changer, 12 premium speakers including a 90-watt subwoofer and digital clock	WINDSHIELD WIPERS—with moisture-sensitive feature

LINCOLN LS V8 SPORT EQUIPMENT

In addition to or in place of the Lincoln LS Standard Equipment, the Lincoln LS V8 Sport Equipment includes the following:

BUMPERS—color keyed	SEATS—heated and cooled front seats with Premium perforated leather seating surfaces
ELECTRONIC MESSAGE CENTER	SEATS—front, power lumbar support
ENGINE—3.9L 280 hp 32-valve DOHC V8 with variable cam timing and electronic throttle control	SUSPENSION—sport tuned
HOMELINK™ UNIVERSAL TRANSCEIVER—includes garage door opener	TIRES—P235/50VR17 black sidewall all-season with 17-inch mini-spare
MEMORY FEATURE—for power-adjustable foot pedals, driver's seat, steering column and exterior mirrors	TRANSMISSION—5-speed SelectShift Automatic™ transmission with manual gear selection mode
MIRROR—electrochromic (auto-dimming) driver's side exterior mirror	TRIM—aluminum interior with Satin Nickel accents
MIRROR—electrochromic (auto-dimming) rearview mirror with compass	WHEELS—17-inch 7-spoke machined aluminum
RADIO—Audiophile Sound System with 180-watt AM/FM stereo/6-disc in-dash CD changer, 12 premium speakers including a 90-watt subwoofer and digital clock	WINDSHIELD WIPERS—with moisture-sensitive feature

LINCOLN LS V8 PREMIUM SPORT EQUIPMENT

In addition to or in place of the Lincoln LS V8 Sport Equipment, the Lincoln LS V8 Premium Sport Equipment includes the following:

ADVANCETRAC™—vehicle stability enhancement system	REAR SEATS—with adjustable head restraints
CARGO NET	SHIFTER KNOB—wood
HEADLAMPS—High Intensity Discharge (HID)	STEERING WHEEL—wood and leather wrapped
MIRRORS—folding exterior mirrors	TRIM—American Walnut Burl wood trim with Satin Nickel accents
MOONROOF—power	WHEELS—17-inch 8-spoke chrome aluminum

AVAILABLE EQUIPMENT

ADVANCETRAC™—vehicle stability enhancement system	NAVIGATION SYSTEM—DVD based 6.5-inch color touch-screen navigation system with map display and voice commands ⁷ (offered as combined navigation/THX® Audio System)
EXTENDED REAR PARK ASSIST—in reverse, the system uses both radar and ultrasonic sensors to assess and alert the driver of an object within 15 feet directly behind the vehicle	RADIO—THX®-Certified Car Audio System with AM/FM stereo and 6-disc CD changer ⁷ (offered as combined navigation/THX® Audio System)
HEADLAMPS ² —High Intensity Discharge (HID)	SEATS—rear outboard heated ⁷
MOONROOF—power ²	WHEELS—16-inch 7-spoke polished aluminum ⁸
	WHEELS—16-inch 11-spoke chrome aluminum ⁹

¹With available moonroof. ²If equipped. ³Always wear your safety belt and secure children in the rear seat. ⁴HomeLink is a registered trademark of Johnson Controls. ⁵Standard on V6 Premium models. Available on V8 Sport model. ⁶Standard on V6 Premium and V8 Premium Sport models. Available on V8 Sport models. ⁷Available on V6 Premium, V8 Sport and V8 Premium Sport models only. ⁸Available on V6 Base model only. ⁹Available on V6 Premium model only.

WEB SITE

For additional information on the Lincoln LS or other fine Lincoln automobiles, or to build your Lincoln and determine availability at your local dealer, please visit Lincoln.com.



To ensure we're offering our customers the best service possible, we proudly offer the **Lincoln Personal Consultant**. Just visit our Web site at Lincoln.com/pc and one of our manufacturer's representatives will help with anything from price quotes to product features to arranging a test drive at your local dealer—at no cost or obligation.

FORD CREDIT Ford Credit provides the convenience of one-stop shopping with a variety of simple-to-understand purchase or Red Carpet Lease programs available right at the dealership. For more information, ask your dealer for details, or visit us on the Web at www.fordcredit.com

To help minimize the impact of this brochure on the environment, Lincoln prints on recycle-grade coated paper that contains a minimum of 10% post-consumer waste.

Following publication of this brochure, certain changes in standard equipment, options, prices and the like, or product delays may have occurred which would not be included in these pages. Your Lincoln dealer is your best source for up-to-date information. Lincoln reserves the right to change product specifications at any time without incurring obligations. Options shown or described in this brochure are available at extra cost and may be offered only in combination with other options or subject to additional ordering requirements or limitations. Information based on AAMA specifications.

EXTERIOR CLEARCOAT COLORS



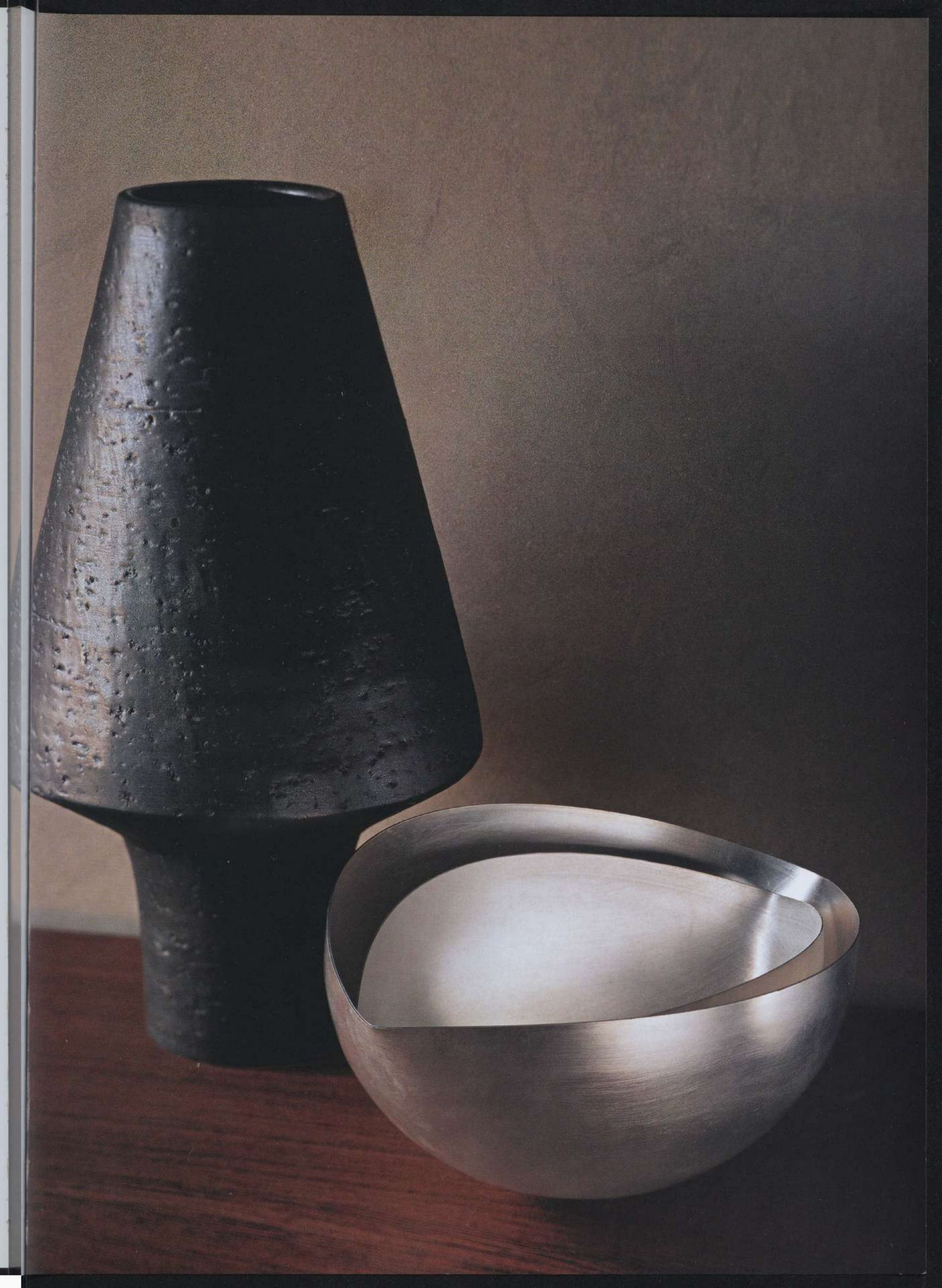
INTERIOR COLORS

INTERIOR AND EXTERIOR COLOR COMBINATIONS

	Black	True Blue Metallic	Aspen Green Metallic	Autumn Red Metallic	Vivid Red Metallic	Charcoal Grey Metallic	Medium Steel Blue Metallic	Light Tundra Metallic	Silver Birch Metallic	Light Parchment Gold Metallic	Ivory Parchment	Ceramic White
Dark Ash/Medium Ash	•	•	•					•	•			•
Espresso/Medium Light Stone	•		•	•	•	•	•	•	•	•	•	•
Black	•	•		•	•	•	•	•	•	•	•	•

Interior fabric and exterior color combinations are not available on all models. Please see your dealer for availability.

¹Available through Spring 2003. ²Available Spring 2003. ³Extra coat tri-coat paint. ⁴Top color denotes upper instrument panel trim color.




LINCOLN

