

2004 ECONOLINE

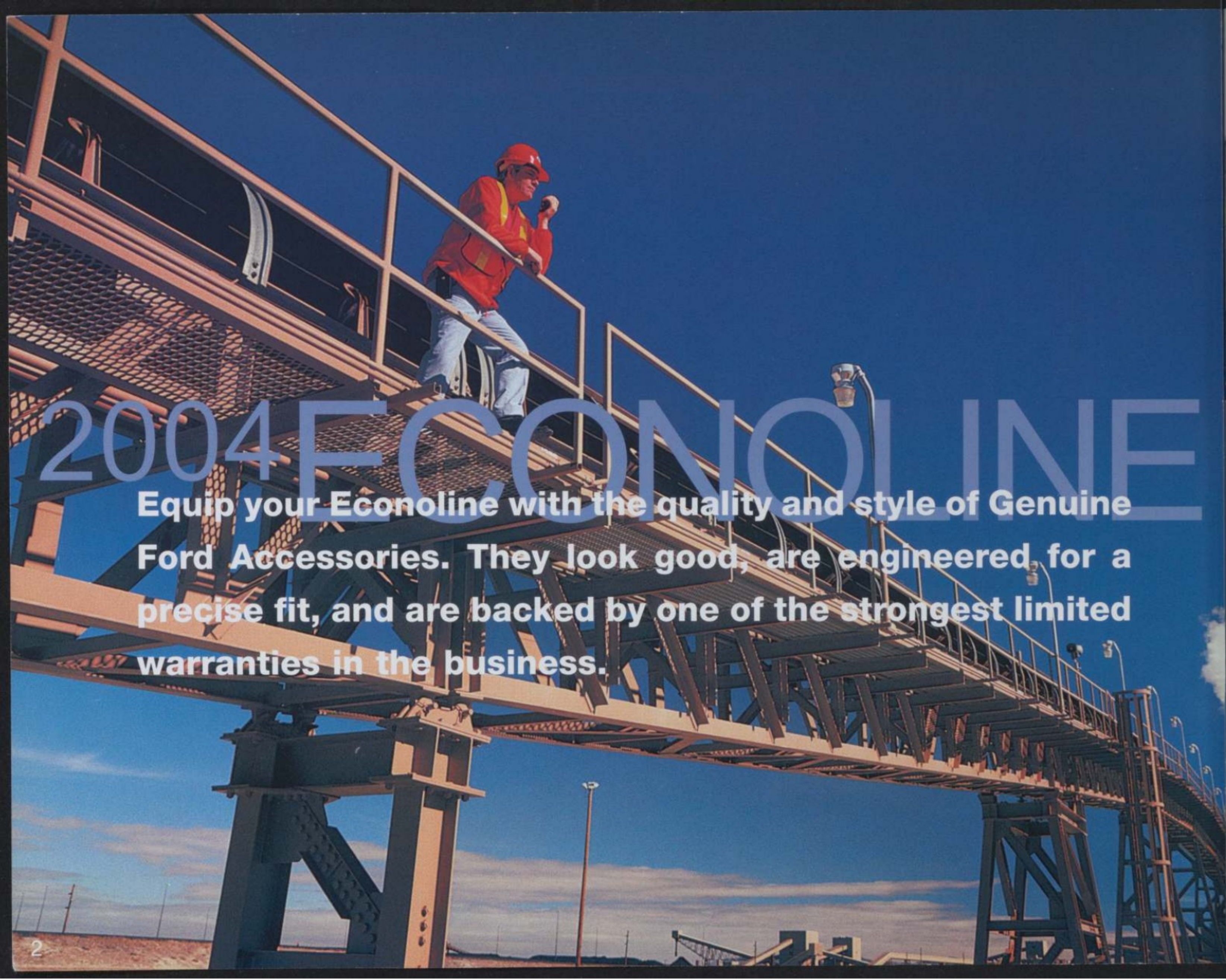
ACCESSORIES

**PERSONALIZE
YOUR
ECONOLINE WITH
GENUINE
FORD
ACCESSORIES**



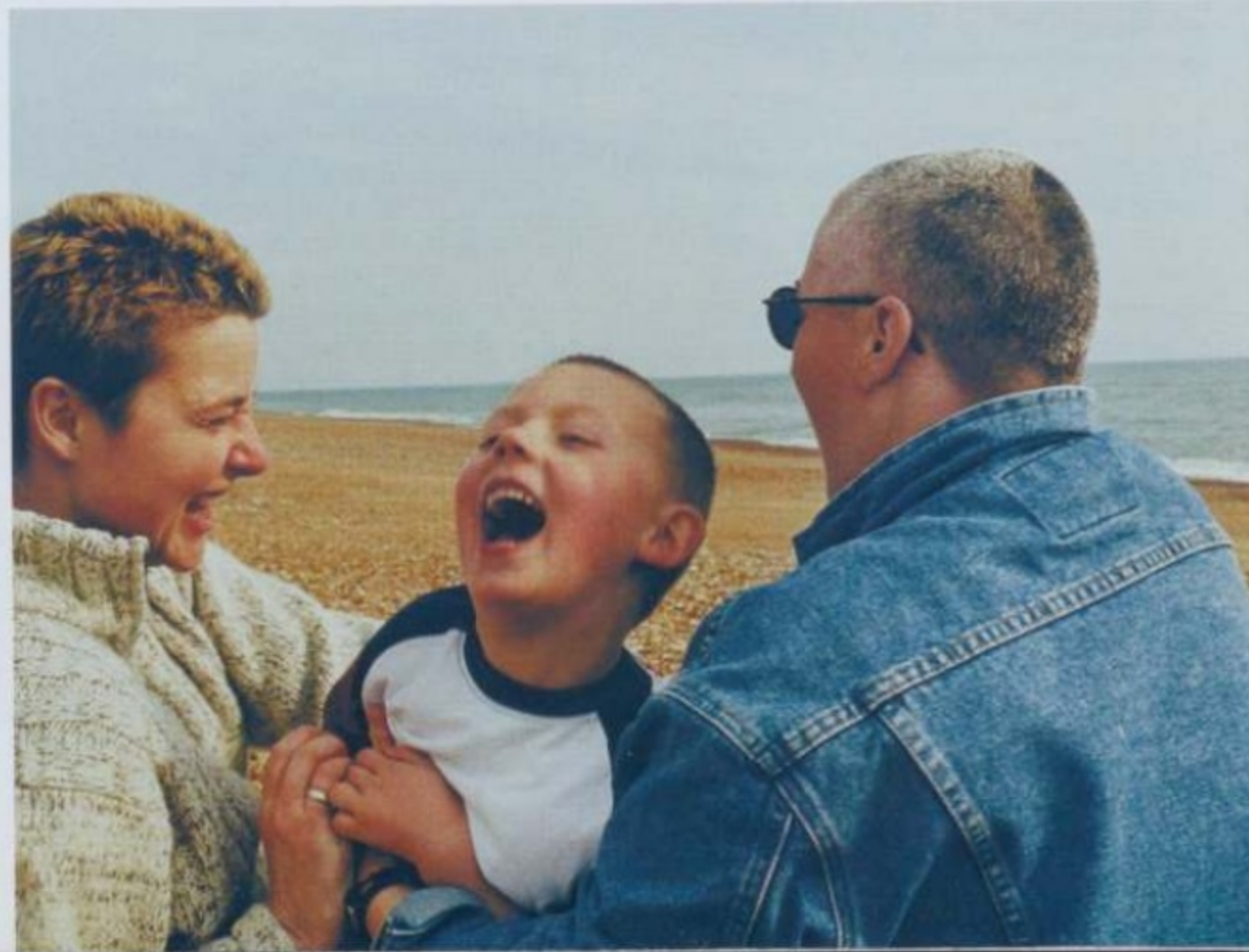
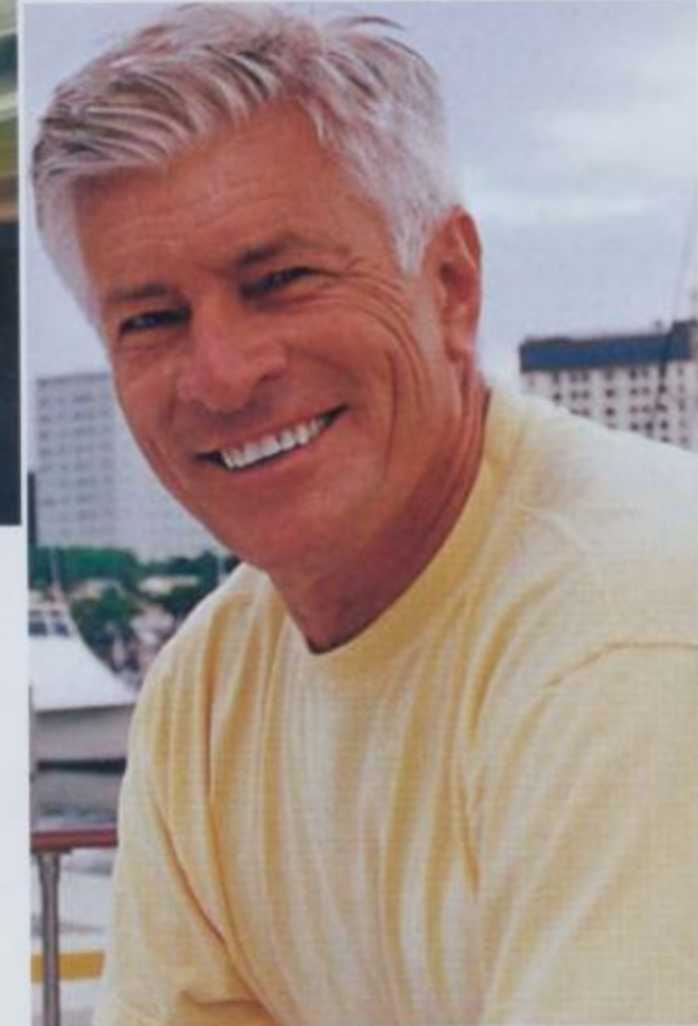
fordaccessoriesstore.com





2004 ECONOLINE

Equip your Econoline with the quality and style of Genuine Ford Accessories. They look good, are engineered for a precise fit, and are backed by one of the strongest limited warranties in the business.



- OUTWARD APPEARANCES **4**
- INSIDE MOVES **5**
- GET IN GEAR **6**
- SAFE AND SECURE **7**



OUTWARD APPEARANCES

1. Full Front End Cover
Heavy-duty vinyl shields front end from bugs, stones and off-road debris. Flannel backing minimizes moisture build-up between the cover and the painted surface. Multi-piece construction lets you open hood without removing the cover. Easy to install. Late Availability. Base Part No. **19A414**

2. Wraparound Bug Shield*
Excellent front-end protection with stylish wraparound design to enhance vehicle's lines. Constructed of durable polycarbonate in versatile smoke color. Easy installation. Base Part No. **16C900**

3. Original Equipment Platform Boards*
These original equipment boards feature a rugged, corrosion-resistant steel substructure with a black plastic covering. The ribbed surface helps provide sure footing. Easy no-drill installation. Base Part No. **16450**

4. Door Edge Guards
Each set is custom made to the exact contours of your vehicle. Won't sag, slip, peel or rust – they're made of stainless steel and lined with a non-metallic material that won't scratch paint. No adhesives or screws needed for installation. Available in bright finish or black matte finish. Base Part No. **20910**

5. Side Window Deflectors
Deflectors keep out snow or rain so you can crack open the window and let fresh air in. Durable, smoke-colored acrylic. Self-stick adhesive for easy installation. Base Part No. **18246**

6. Flat Splash Guards
Guard against mud, snow and ice. Durable splash guards are embossed with the Ford Oval logo. Packaged in a 2-piece set. Base Part No. **16A550**

7. Trailer Hitch Balls
Available in 1 7/8" (4 cm) or 2" (5 cm) diameters, hitch balls feature forged, one-piece construction for maximum strength and a chrome finish for corrosion resistance. See your dealer for towing limitations. Base Part No. **19F503**

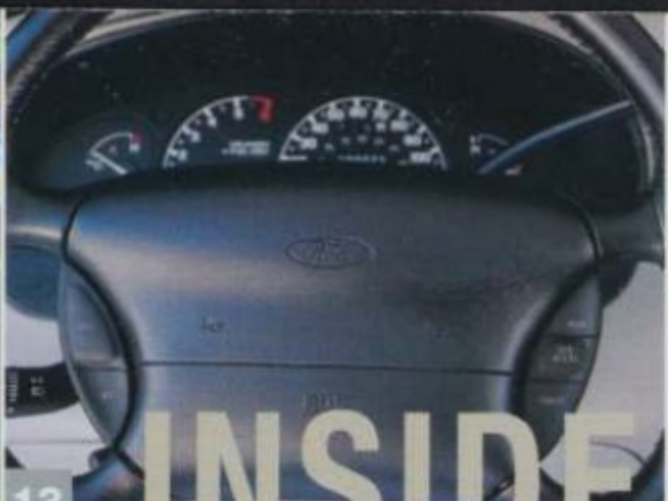
8. Trailer Hitch Receiver Cover
Provides a nice, clean look, while preventing dirt, mud and snow from clogging the trailer hitch receiver. Available for 2" (5 cm) hitch assembly. Base Part No. **17F000**

9. Trailer Hitch Assembly – Class III/IV
Original equipment hitch bolts on to existing holes – no drilling or welding required. This Class III/IV has a 10,000 lb. (4,540 kg) towing capacity and 1,000 lb. (454 kg) tongue capacity. NOTE: Towing capacity could be limited by vehicle powertrain. See your dealer or Owner's Guide for details. Base Part No. **19D520**



10. Swivel Mount Trailer Hitch Drawbar
Make hooking up a trailer a snap with this innovative, swivel mount drawbar. You only have to get close to make the trailer connection. Then, just extend and rotate it as needed to connect to the trailer. Once the connection is completed, the automatic locking feature locks the unit into towing position. For 2" (5 cm) receivers. Does not include hitch ball. See your Owner's Guide for towing limitations. Base Part No. **19A282**

11. Trailer Hitch Drawbars
Features a square tubular shank, heavy steel ball platform and a durable black powdercoat finish. Designed for 2" (5 cm) trailer hitch receivers, these drawbars can be used in the raised or dropped position to match the trailer coupler height. Two offsets available for 2" receivers: 0" drop/2 1/2" rise and 1 1/4" drop/4" rise. Refer to your Owner's Guide for towing limitations. Base Part No. **19A282**



INSIDE MOVES

12. Electrochromic Compass Mirror and Compass/Temp Mirror
Ease the discomfort of headlight glare in your rearview mirror. Mirror automatically dims when glare is detected. Features a built-in compass. Our Electrochromic Compass Mirror with Temperature Display has the additional feature of an outside temperature display. Switch lets you toggle between compass and temperature readings; set to Celsius or Fahrenheit scales. Dealer installation recommended. Base Part No. **17700**

13. Speed Control
Microcomputer-controlled system automatically adjusts the throttle to maintain your desired cruising speed. Fingertip controls are conveniently located on the steering wheel. Each kit contains a leather-wrapped steering wheel. Dealer installation recommended. Late Availability. Base Part No. **9A818**

14. GPS Navigation System
Three for the road: navigation, AM-FM tuner and CD player in one compact package. Offers turn-by-turn voice directions to the desired destination. At-a-glance directions displayed on screen. Replaces the factory-installed audio system. Separate bezel kit required for each installation. Dealer installation recommended. Base Part No. **18814** (Spring Clip Radio Bezel Kit – **10E991**)

15. All-Weather Vinyl Floor Mats
The deep grooves and raised ridges in these heavy-duty mats catch and hold snow, slush and mud, while protecting the vehicle carpeting. Ribbed backing and driver-side positive retention help keep mats in place. Available in colors that complement your vehicle interior. Front mats are sold in sets of two, second- and third-row mats are one piece. Base Part No. **13300** Front Base Part No. **13106** Rear and third row

16. Carpeted Floor Mats
Premium grade carpeting is custom fit to the exact contour of the vehicle. Driver-side mats have positive retention, and all mats have a nib backing to help prevent slippage. Front mats are sold in sets of two, second-row and third-row mats are one-piece. Base Part No. **13086** Front Base Part No. **13106** Rear

*Eligible for residualization under a Ford Credit Red Carpet Lease.

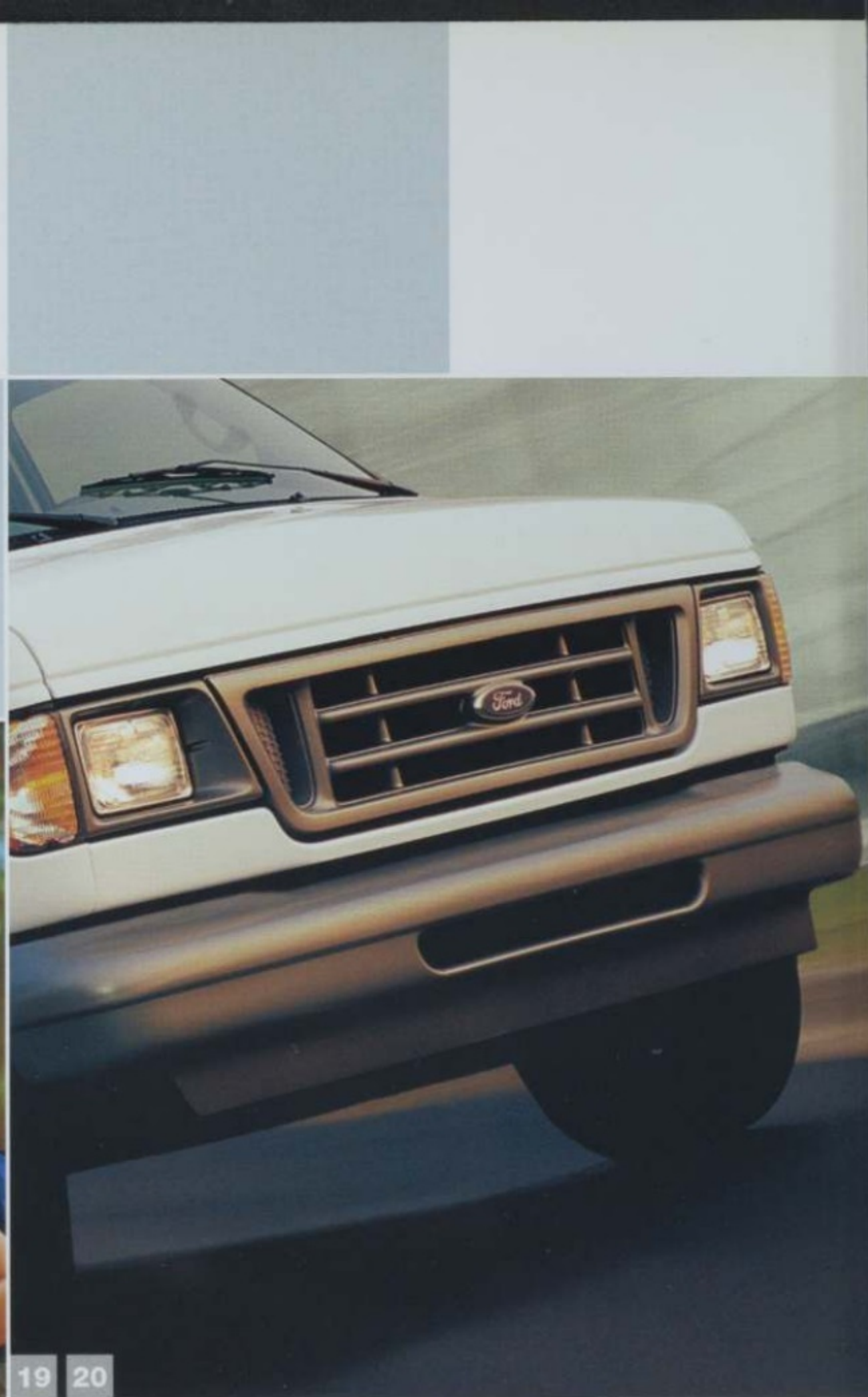


17

GET IN GEAR

17. ROC2® Hitch Mount Bike Carriers by Yakima
Fits into 2" (5 cm) hitch receivers. A swing-down feature allows access to the rear cargo area. Holds up to two bikes. Carrier is secured to the hitch receiver with a lock system. Base Part No. **55100**

18. TerraFirma® Hitch Mount Bike Carrier by Yakima
(not pictured) Just like the ROC2®, only this holds up to four bikes. Fits 2" (5 cm) hitch receivers. Kit includes straps to keep bike wheels secure. Carrier is secured to hitch receiver with locking system; cable lock secures bikes to carrier. Base Part No. **438A38**



19 20



21

SAFE AND SECURE



22

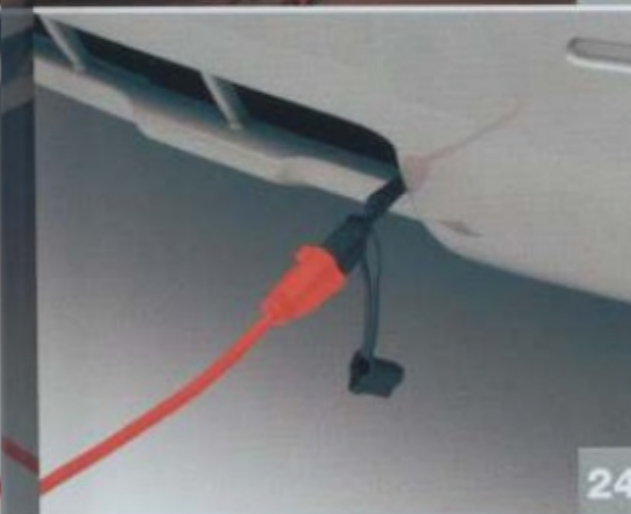
19. Daytime Running Lamp Module
This system automatically activates the low-beams at 75% of their normal operating voltage whenever the ignition is in the "on" position. Dealer installation recommended. Base Part No. **13B218**

20. Daytime Running Lamp with Auto Headlamp Module
Never touch your headlamp switch again. System automatically switches the headlamps on whenever darkness is sensed. Also features a time delay that leaves the lights on for a preset amount of time after parking the vehicle. Daytime running lights will activate during daylight. Engineered for complete integration with vehicle electrical system. Dealer installation recommended. Base Part No. **13B218**



23

21. Remote Start Systems*
Enjoy the comfort and convenience of a pre-warmed or pre-cooled vehicle. Systems start vehicle from up to 500 ft. (150 m) away, and ensure that it's locked and that its security system (if equipped) is armed. Comes with two remote transmitters. Two systems to choose from: Remote starting only; and Remote starting and vehicle security. Relay kit (sold separately) required for most applications. Dealer installation recommended. Base Part No. **19G364** (**19G390** for Relay)



24

22. Vehicle Security Systems*
Protect your vehicle with a state-of-the-art security system. These systems offer a full range of security features and come complete with pocket-sized transmitters. Three systems to choose from: Vehicle security only; Deluxe vehicle security; and Vehicle security with remote start. Includes a Lifetime Limited Warranty on parts (contact dealer for complete details). Dealer installation recommended. NOTE: Vehicles equipped with a security system may be eligible for insurance discounts in some states/provinces. Base Part No. **19A361**

23. Highway Safety Kit
Convenient carrying kit includes a reflective triangle, a flashlight, a fire extinguisher, bungee cords, a thermal blanket, cotton gloves, hose tape, a multifunction knife, Phillips and slotted head screwdrivers and a 12-hour light stick. Base Part No. **19F515**

24. Engine Block Heater
Keep the engine block warm for easier starting, faster warm-ups, and less fuel waste and battery drain. Just connect the heater to a grounded extension cord (not included) and plug into any 110-volt power source. Dealer installation recommended. Base Part No. **6D008**

25. Engine Block Heater/Battery Warmer (not pictured)
In addition to the engine block heater, this kit contains a Battery Warmer that wraps around the battery. Once it's installed, simply hook it up to any heavy-gauge extension cord (not included) and plug into a standard wall outlet. Dealer installation recommended. Base Part No. **10B732**

26. Air Bag Anti-Theft Locks
Specially designed locks and key help deter theft of driver-side air bags. Kit includes a window sticker to tell potential thieves that you're protected. Dealer installation recommended. Base Part No. **14B384**

27. Keyless Entry Keypad
Conveniently unlock your vehicle without your key or keyless entry remote. No wiring necessary – programmable, backlit keypad tunes to the same frequency as your transmitter. Long-life battery (lasts 100,000 cycles). Easy no-drill installation. For vehicles equipped with factory remote keyless entry. Base Part No. **14A626**

28. First-Aid Kit
Compact case fits into glove compartment or center console so it's always there when you need it! Contains general first-aid items such as bandages, gauze, antibacterial ointment and more. Base Part No. **19F515**



28



27

*Eligible for residualization under a Ford Credit Red Carpet Lease.

Limited Warranty Information

Ford Motor Company will repair or replace any properly dealer-installed Genuine Ford Accessory found to be defective in factory-supplied materials or workmanship during the warranty period, as well as any component damaged by the defective accessory.

This means that Genuine Ford Accessories purchased along with your new vehicle and installed by the dealer at time of delivery are covered for the full length of your New Vehicle Limited Warranty — 3 years or 36,000 miles (whichever occurs first). If you choose at a later date to purchase a Genuine Ford Accessory, it will be covered for 12 months or 12,000 miles (whichever occurs first). Contact your dealer for details and a copy of the warranty.

Red Carpet Lease

Get the ride you want. Many Genuine Ford Accessories purchased and installed by the dealer at lease inception can be paid for in your monthly lease payment. See your Ford Dealer for details.

ESP PremiumCare Plan

Depending on the ESP Plan you select, some dealer-installed Genuine Ford Accessories can be covered for up to 7 years or 100,000 miles. See your Ford Dealer for details.

NOTE: The product descriptions and specifications contained herein were correct at the time this material was being prepared for printing. However, our policy is one of continuous improvement, and we reserve the right to change design or specifications at any time without notice and without incurring obligation.

**GENUINE
ACCESSORIES**



fordaccessoriesstore.com



Printed in USA ABT-4015 September 2003