

Effective 12.1.03

04

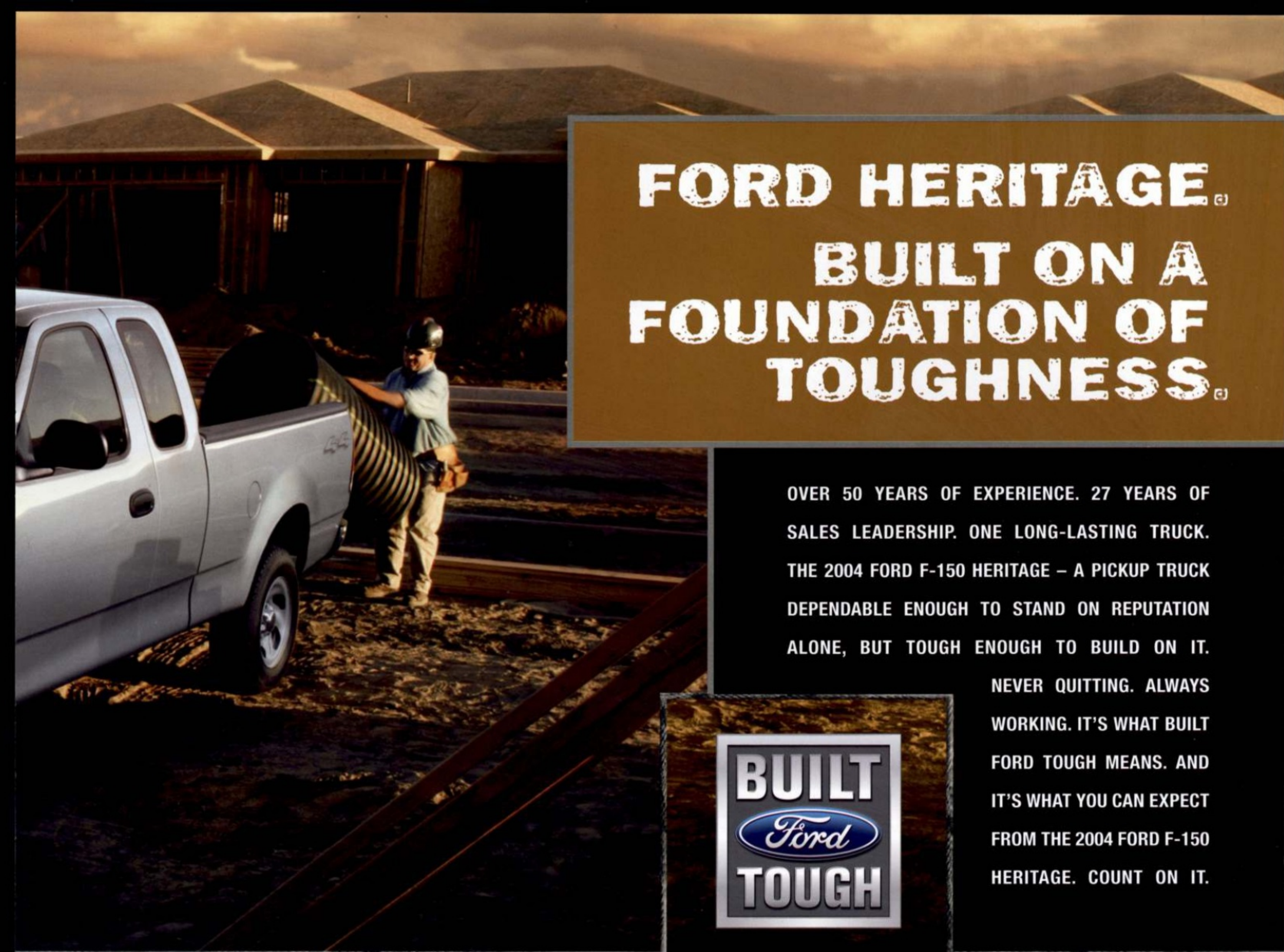
# F-150 HERITAGE





**2004**

**F-150 HERITAGE**



**FORD HERITAGE<sup>®</sup>**  
**BUILT ON A**  
**FOUNDATION OF**  
**TOUGHNESS<sup>®</sup>**

OVER 50 YEARS OF EXPERIENCE. 27 YEARS OF SALES LEADERSHIP. ONE LONG-LASTING TRUCK. THE 2004 FORD F-150 HERITAGE – A PICKUP TRUCK DEPENDABLE ENOUGH TO STAND ON REPUTATION ALONE, BUT TOUGH ENOUGH TO BUILD ON IT.

NEVER QUITTING. ALWAYS WORKING. IT'S WHAT BUILT FORD TOUGH MEANS. AND IT'S WHAT YOU CAN EXPECT FROM THE 2004 FORD F-150 HERITAGE. COUNT ON IT.





**F-150 HERITAGE**

**XL REGULAR CAB**

**THIS IS SERIOUS BUSINESS.®**



**XL REGULAR CAB INTERIOR**

**SHIFT-ON-THE-FLY**

**4X4**

**SEATING**  
EVERY OFFICE NEEDS GOOD FURNITURE, ESPECIALLY IF YOU DRIVE IN IT. THE F-150 HERITAGE XL REGULAR CAB COMES STANDARD WITH A DURABLE CLOTH BENCH SEAT (OPTIONAL WITH THE WORK TRUCK GROUP). SHOWN ABOVE IN MEDIUM GRAPHITE.

**4-WHEEL DRIVEN**  
SINCE MANY JOB SITES ARE Mired IN MUD UNTIL THE WORK IS DONE, TURN TO THE XL REGULAR CAB'S 4x4 WITH MANUAL SHIFT-ON-THE-FLY SYSTEM TO GET YOU OUT OF TOUGH SITUATIONS.

**STRAP IT UP**  
STAY ORGANIZED. THIS SIMPLE, YET HANDY, STRAP KEEPS YOUR SMALL ITEMS, LIKE MAPS, RECEIPTS AND PENS, FROM GETTING MISPLACED OR DAMAGED.

**VISOR STRAP**

YOUR BUSINESS IS VERY IMPORTANT. YOUR TRUCK CHOICE SHOULD BE, TOO. THE FORD F-150 HERITAGE XL REGULAR CAB WITH THE OPTIONAL WORK TRUCK GROUP IS A PROVEN LEADER. YOU CAN COUNT ON IT FROM THE FIRST LOAD UP TO THE FINAL HAUL-AWAY. IT COMES WITH THE DEPENDABLE 4.2L V6 ENGINE AND 5-SPEED MANUAL TRANSMISSION – A HARD WORKER ON THE JOB AND EASY ON YOUR BOTTOM LINE. OR, FOR MORE DEMANDING JOBS, CHOOSE THE COMBINATION OF THE OPTIONAL 4.6L TRITON™ V8 WITH AUTOMATIC TRANSMISSION AND PAYLOAD GROUP #3 FOR INCREASED CAPACITY AND A 6600-LB. GVWR. DON'T GET TO THE JOB AND WONDER WHETHER YOU BOUGHT THE RIGHT TRUCK. GET THE FORD F-150 HERITAGE. NO EXCUSES. ONLY RESULTS.



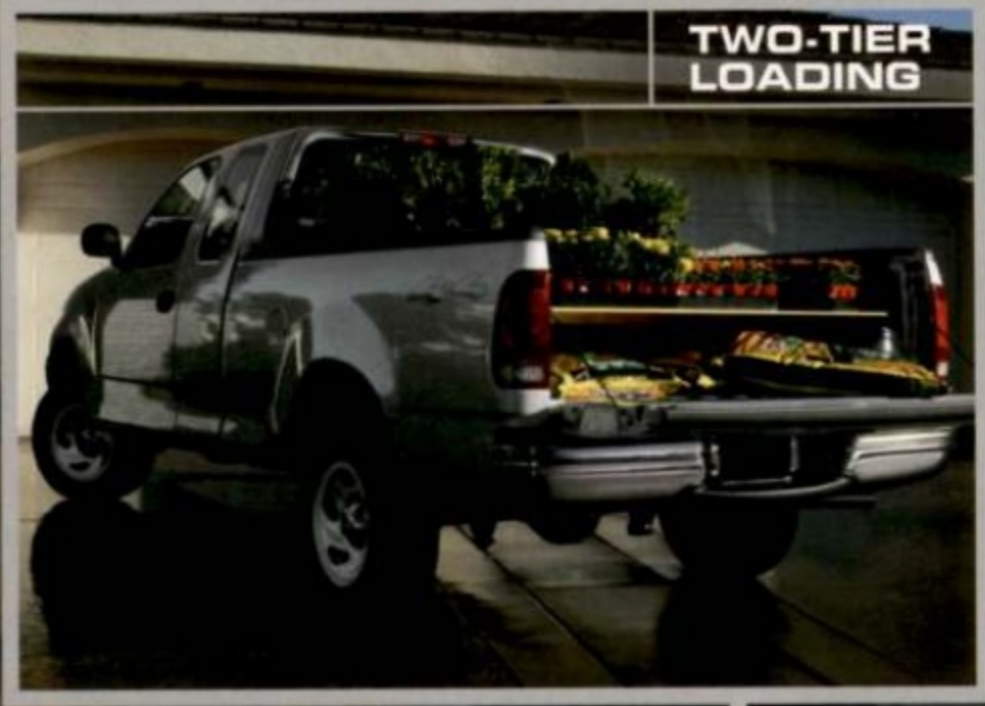


**F-150 HERITAGE**

**XL SUPERCAB**



**XL SUPERCAB INTERIOR**



**TWO-TIER LOADING**

**SEATING AND MORE**  
THE FORD F-150 HERITAGE SUPERCAB INTERIOR SEATS UP TO 6 AND IS TOUGH ENOUGH TO HANDLE EVERYDAY WEAR AND TEAR. BLACK VINYL FLOORING IS STANDARD. OPTIONAL FRONT 40/60 CLOTH SPLIT-BENCH SEATING SHOWN IN MEDIUM GRAPHITE.

**PAYLOAD FLEXIBILITY**  
EXPAND YOUR POSSIBILITIES USING F-150 HERITAGE'S TWO-TIER LOADING CAPABILITY. WITH JUST A COUPLE OF 2x4s AND A SHEET OF PLYWOOD, YOU CAN HAVE STURDY, TWO-LEVEL LOADING.

**MORE STORAGE**  
WITH SUPERCAB, GAINING MORE STORAGE IS AS SIMPLE AS FLIPPING UP THE REAR 40/60 SPLIT-BENCH SEAT CUSHIONS.



**REAR STORAGE**

PICK UP YARD OF DIRT. CHECK. TOW BOAT TO MARINA. CHECK. MOVE BUDDY TO NEW APARTMENT. CHECK. TAKE KIDS TO BAND PRACTICE. CHECK. YOUR LIST MAY GO ON AND ON, BUT THE FORD F-150 HERITAGE XL SUPERCAB IS THERE TO MEET THE CHALLENGE. GENEROUS INTERIOR SPACE AND VERSATILE STORAGE COMFORTABLY FITS YOU, YOUR PASSENGERS AND YOUR STUFF. A POWERFUL STANDARD V6 ENGINE DELIVERS THE HORSEPOWER, TORQUE AND PAYLOAD NUMBERS THAT GET YOU WHERE YOU NEED TO GO. AND BEST OF ALL, IT'S BUILT FORD TOUGH.

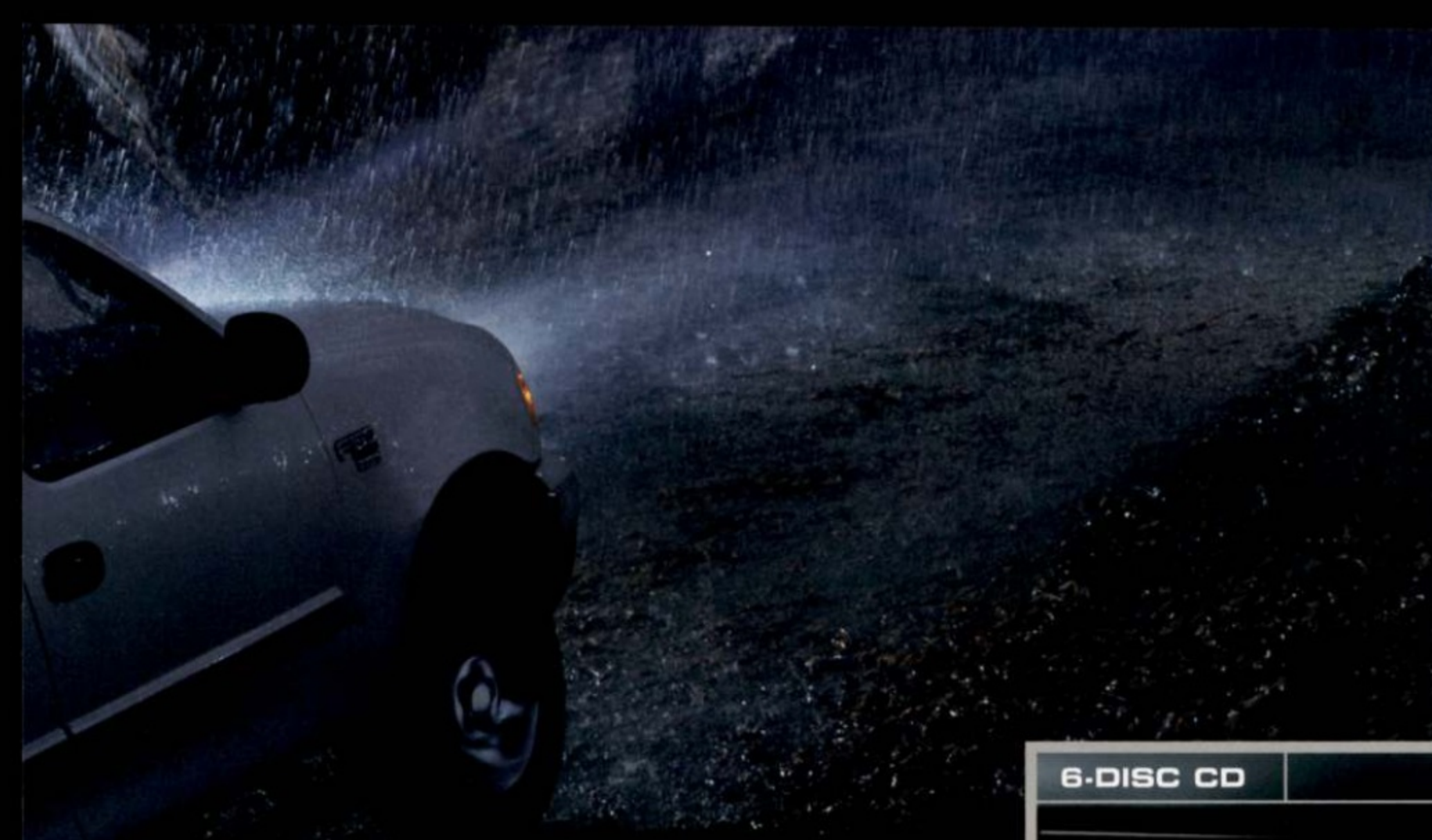
**BRING ON THE TO-DO LIST.**



**F-150 HERITAGE**

**XLT SUPERCAB**

**AS SOON AS IT STARTS RECHA**



**XLT INTERIOR**



**CONVENIENCES**  
 XLT OFFERS MANY AMENITIES INCLUDING ACCOMMODATING OPTIONS LIKE CLOTH CAPTAIN'S CHAIRS WITH CENTER CONSOLE, AND ADJUSTABLE DRIVER AND FRONT-PASSENGER LUMBAR SUPPORT. THIS IS ON TOP OF THE LONG LIST OF XLT STANDARD FEATURES SUCH AS SPEED CONTROL, TILT STEERING, REMOTE KEYLESS ENTRY, POWER WINDOWS AND LOCKS, A CD PLAYER AND A TAILGATE LOCK. PLUS, FOG LAMPS AND TOW HOOKS ARE STANDARD ON 4x4.

**6-DISC CD CHANGER**  
 DON'T FORGET THE TUNES. GET THE OPTIONAL AM/FM STEREO/CLOCK/6-DISC IN-DASH CD CHANGER WITH INTEGRATED AMP AND EQUALIZER.

**WHEELS**  
 CHOOSE THE OPTIONAL 16" CAST ALUMINUM WHEELS FOR THAT EXTRA STAND-OUT-IN-TRAFFIC SHINE.



**OPTIONAL XLT CAST ALUMINUM WHEEL**

IT'S DARK. IT'S RAINY. IT'S MUDDY. YOU'RE TOWING STUFF. AND, YOU COULDN'T BE MORE COMFORTABLE OR CONFIDENT. YOU MUST BE DRIVING A FORD F-150 HERITAGE XLT SUPERCAB. LOADED WITH AN OPTIONAL TRITON™ 4.6L V8 ENGINE (STANDARD ON 4x4) AND FRONT CAPTAIN'S CHAIRS, YOU HAVE THE POWER AND POSITION TO STEER YOUR SHIP TO A SAFE HARBOR. ADDING THESE TO THE LENGTHY LIST OF STANDARD EQUIPMENT IS ENOUGH TO MAKE A GROWN MAN CRY TEARS OF JOY. THE FORD F-150 HERITAGE SHEDS A WHOLE NEW LIGHT ON THE TASK AT HAND.

**YOU'RE OFF THE CLOCK, RECHARGING YOUR BATTERIES.**



### 4.2L V6

PROVEN. ECONOMICAL. AND BUILT FORD TOUGH. THE 4.2L SEFI V6 ENGINE SETS THE STANDARD ON FORD F-150 HERITAGE WITH IMPRESSIVE NUMBERS – 202 HP @ 4800 RPM AND 252 LB.-FT. OF TORQUE @ 3400 RPM.

OUR TRANSMISSIONS ARE BACKED BY MORE THAN 50 YEARS OF TRUCK EXPERIENCE, SO YOU CAN DEPEND ON THEIR ABILITY TO CONVERT HORSEPOWER INTO SERIOUS PAVEMENT-GRIPPING POWER. CHOOSE FROM FORD F-150 HERITAGE'S STANDARD 5-SPEED MANUAL OVERDRIVE, WITH THE MANUAL SHIFT-ON-THE-FLY 4-WHEEL-DRIVE SYSTEM PICTURED BELOW, OR AN AVAILABLE 4-SPEED AUTOMATIC OVERDRIVE.

### TRANSMISSIONS

### 4.6L TRITON™ V8



WHETHER YOU'RE PULLING, PASSING, HAULING OR REVVING, THE 4.6L SEFI TRITON V8 ENGINE MAKES A POWERFUL STATEMENT. IT DELIVERS 231 HP @ 4750 RPM AND ITS TORQUE REACHES 293 LB.-FT. @ 3500 RPM. THAT'S FORD POWER. THAT'S TRITON.

#### AVAILABLE ENGINES

##### 4.2L SEFI V6

Horsepower: 202 @ 4800 rpm  
Torque: 252 lb.-ft. @ 3400 rpm

##### 4.6L Triton V8

Horsepower: 231 @ 4750 rpm  
Torque: 293 lb.-ft. @ 3500 rpm

##### 5.4L Triton 2-Valve Bi-Fuel V8

Horsepower: 230 @ 4500 rpm  
Torque: 325 lb.-ft. @ 2500 rpm

##### 5.4L Triton 2-Valve NGV V8

Horsepower: 230 @ 4500 rpm  
Torque: 325 lb.-ft. @ 2500 rpm

DECADE AFTER DECADE, F-SERIES TRUCKS HAVE GOTTEN THE JOB DONE. NEED SOME HEAVY LIFTING? NEED THAT LOAD MOVED? WANT TO LAUNCH THAT 18-FOOTER OUT INTO THE BAY? DON'T WORRY. FORD TRUCKS EXCEL WHEN THE JOBS ARE THROWN THEIR WAY. NEVER QUITTING. ALWAYS WORKING. THE ENGINES, DRIVETRAIN, CHASSIS AND FRAME ARE READY AND ABLE TO WORK FOR YOU. IT'S WHAT BUILT FORD TOUGH MEANS. DAY AFTER DAY. JOB AFTER JOB. YEAR AFTER YEAR. DEPEND ON IT.

## F-150 HERITAGE

## CAPABILITY

# THERE'S STRENGTH IN THESE NUMBERS <sup>(1)</sup>

### PAYLOAD PACKAGE SELECTOR

#### REGULAR CAB 4x2 STYLESIDE

Wheelbase (in.)	Engine	Max. Payload (lbs.)	GVWR (lbs.)	Tires (min.)
120	4.2L	2000	6050	P255/70R16 all-season BSW
	4.6L	1910	6050	P235/70R16 all-season BSW
139	4.2L	1920	6050	P235/70R16 all-season BSW
	4.6L	1800	6050	P235/70R16 all-season BSW
	4.6L <sup>1</sup>	2310	6600	P255/70R16 all-season BSW
	NGV 5.4L <sup>2</sup>	2620	7650	LT245/75R16 all-season BSW
	Bi-Fuel 5.4L <sup>2</sup>	2690	7700	LT245/75R16 all-season BSW

#### SUPERCAB 4x2 STYLESIDE

139	4.2L	1760	6050	P235/70R16 all-season BSW
	4.6L	1640	6050	P235/70R16 all-season BSW
	Bi-Fuel 5.4L <sup>2</sup>	2560	7700	LT245/75R16 all-season BSW
157	4.6L	1460	6050	P235/70R16 all-season BSW

#### REGULAR CAB 4x4 STYLESIDE

120	4.2L	1650	6050	P255/70R16 all-season BSW
	4.6L	1750	6250	P235/70R16 all-season BSW
139	4.2L	1570	6050	P235/70R16 all-season BSW
	4.6L	1650	6250	P235/70R16 all-season BSW
	Bi-Fuel 5.4L <sup>2</sup>	2350	7700	LT245/75R16 all-terrain OWL

#### SUPERCAB 4x4 STYLESIDE

139	4.6L	1510	6250	P235/70R16 all-season BSW
	Bi-Fuel 5.4L <sup>2</sup>	2210	7700	LT245/75R16 all-terrain OWL
157	4.6L	1370	6250	P235/70R16 all-season BSW

#### REGULAR CAB 4x2 FLARESIDE

Wheelbase (in.)	Engine	Max. Payload (lbs.)	GVWR (lbs.)	Tires (min.)
120	4.2L	1990	6050	P255/70R16 all-season BSW
	4.6L	1900	6050	P235/70R16 all-season BSW

#### REGULAR CAB 4x4 FLARESIDE

120	4.2L	1640	6050	P255/70R16 all-season BSW
	4.6L	1740	6250	P235/70R16 all-season BSW

<sup>1</sup>With Payload Group #3.

<sup>2</sup>With 7700-lb. Payload Group A.

### TOWING SELECTOR

#### CONVENTIONAL TOWING

Maximum Loaded Trailer Weight (lbs.) – Automatic Transmission

Engine	Axle Ratio	GCWR (lbs.)	Regular Cab		SuperCab	
			4x2	4x4	4x2	4x4
4.2L SEFI V6	3.31	9000	4600	—	4500	—
	3.55	10,000	5700	5400	5500	—
4.6L SEFI V8	3.08	10,000	2000	—	2000	—
	3.31	10,500	6100	5800	5900	5500
	3.55	11,500 <sup>1</sup>	7100	6800	6900	6500
	3.55	11,000 <sup>2</sup>	—	6300	—	6000
5.4L NGV V8	3.73	11,000	5800	—	—	—
5.4L LPG Bi-Fuel V8	3.73	13,500	8300	8000	8200	7800
5.4L CNG Bi-Fuel V8	3.73	13,500	8200	7800	8000	7700

Maximum Loaded Trailer Weight (lbs.) – Manual Transmission

4.2L SEFI V6	3.08	6500	2000	—	2000	—
	3.31	7200	—	2500	—	—
	3.55	7800	3500	3200	3300	—

#### FIFTH-WHEEL TOWING

Maximum Loaded Trailer Weight (lbs.) – Automatic Transmission

Engine	Axle Ratio	GCWR (lbs.)	Regular Cab		SuperCab	
			4x2	4x4	4x2	4x4
4.2L SEFI V6	3.55	10,000	5700	5400	5500	—
4.6L SEFI V8	3.55	11,500 <sup>1</sup>	7200	6800	6900	6600
	3.55	11,000 <sup>2</sup>	—	6300	—	6100

Note: Maximum loaded trailer weights shown. The combined weight of the towing vehicle (including hitch, passengers and cargo) and the loaded trailer must not exceed the Gross Combination Weight Rating (GCWR).

Note: See RV and Trailer Towing Guide for requirements and restrictions.

<sup>1</sup>With 16" tires or 4x2 P275 17" tires. <sup>2</sup>With 4x4 P265 17" tires.



## STANDARD FEATURES

### Safety/Security

- Airbags\* – Driver and right-front passenger
- Airbag – Passenger-side deactivation switch (Regular Cab only)
- Alert chimes – Headlamps-on, key-in-ignition, safety belt, door ajar
- Belt-Minder® safety belt reminder (driver)
- Brake/shift interlock (with automatic transmission)
- Fuel pump inertia shutoff switch
- Height-adjustable safety belts – Front (Regular Cab and XL SuperCab)
- LATCH – Lower anchors and tether anchors for child safety seats
- Safety belt energy management retractors – Front outboard
- Safety belt pretensioners – Front outboard
- SecuriLock® – Passive anti-theft system
- Side-intrusion door beams

### Mechanical

- 2-speed manual shift-on-the-fly 4-wheel-drive system (4x4 models only)
- 4-wheel power disc brakes with anti-lock braking system (ABS)
- 100,000-mile tune-up interval\*\*
- Battery saver system
- Fail-safe engine cooling system
- Fuel tank – 25-gallon capacity with 6.5' cargo boxes (24.5-gallon capacity with Regular Cab 4x4 with 6.5' box), 30-gallon capacity with 8' cargo box
- Gas shock absorbers
- Hood open assist mechanisms
- Lightweight aluminum hood with underhood light
- Power steering
- Spare tire with lock
- Stabilizer bar – Front
- Stainless steel exhaust system (major components)
- Suspension – Front: independent Short-/Long-Arm (SLA); rear: 2-stage leaf with auxiliary springs
- Trailer tow – 4-pin connector

### Interior

- Air conditioning (optional on XL with Work Truck Group)
- Coat hooks – 2
- Cupholders – 2 on instrument panel
- Dome light with dual map lights
- Front door map pockets
- Grab handles – Driver and right-front passenger
- Power point – 1 in front

### Exterior

- Box rail and tailgate moldings
- Bumpers – Chrome front and rear step
- Cargo box light – Integrated into center high-mounted stop lamp
- Cargo box tie-downs – 4 in cargo box
- Headlamps – Aerodynamic halogen
- Quick-release tailgate
- Stake-bed pockets (not available with Flareside models)
- Styleside bed
- Windshield wipers – Interval

\*Always wear your safety belt and always deactivate the passenger airbag when using a rear-facing child safety seat with Regular Cab and SuperCab models.  
\*\*Under normal driving conditions with regular fluid and filter changes.

## MODEL-SPECIFIC FEATURES/OPTIONS

XL	XL
XL	XL
XL	XL
● ●	<b>Mechanical</b>
● ●	4.2L SEFI 12-valve V6 engine†
● ●	4.6L SEFI 16-valve Triton™ V8 engine††
○ ○	5.4L V8 Bi-Fuel Prep Engine/4-Speed Automatic – Gasoline/propane (LPG) or gasoline/natural gas (CNG) (requires 7700-lb. Payload Group A)
● ○	5.4L V8 Natural Gas/Electronic 4-Speed Automatic O/D – dedicated natural gas (CNG) only (Regular Cab requires 7700-lb. Payload Group A)
● ●	5-speed manual transmission
● ●	4-speed automatic transmission
● ○	16" styled-steel wheels (4)
— ○	16" polished aluminum wheels (4)
— ○	16" cast aluminum wheels (4)
● ●	16" 7-lug Grey styled-steel wheels (4)‡
● ●	P235/70R16 all-season BSW tires (5) (4x2/4x4, N/A on Regular Cab 120" wheelbase with 4.2L)
○ ○	P235/70R16 all-season OWL tires (4) (4x2/4x4, N/A on Regular Cab 120" wheelbase with 4.2L)
● ●	P255/70R16 all-season BSW tires (5) (standard on Regular Cab 120" wheelbase with 4.2L)‡‡
— ○	P255/70R16 all-season OWL tires (4) (4x2)
● ●	LT245/75R16 all-season BSW tires (5)‡ (4x2, N/A with polished aluminum wheels)
● ●	LT245/75R16 all-terrain OWL tires (5) (4x4, N/A with polished aluminum wheels)
— ○	Electronic shift-on-the-fly 4-wheel-drive system (requires V8 and automatic transmission)
○ ○	Fuel tank – Low profile (available with Bi-Fuel LPG only)
○ ○	Higher-ratio rear axle
○ ○	Limited-slip rear axle
○ ○	Skid plates (4x4 models only)
	<b>Seating</b>
● —	Bench seat – Cloth‡‡
● —	Bench seat – Vinyl (packaged with Work Truck Group)
○ ●	Cloth 40/60 front split-bench with adjustable driver and front-passenger lumbar support‡‡
— ○	Cloth captain's chairs with adjustable driver and front-passenger lumbar support
— ○	Power driver's seat/Autolamp (requires auto. trans. with captain's chairs)
● ●	Rear 40/60 split-bench seat – Flip-up (SuperCab)
	<b>Interior</b>
● —	AM/FM stereo with cassette and digital clock
○ ●	AM/FM stereo with single-CD and digital clock‡‡‡
○ ○	AM/FM stereo with single-CD/cassette and digital clock‡‡‡
— ○	AM/FM stereo with 6-disc in-dash CD changer and digital clock
● —	Floor covering – Black vinyl
○ ●	Floor covering – Color-coordinated carpet (with carpeted floor mats)‡‡‡
— ●	Overhead console – Includes compass, outside temperature indicator, sunglasses storage and garage door opener storage (N/A on SuperCab with front bench seat)‡

● Standard ● Select Availability ○ Optional — Not Available

XL	XL
XL	XL
XL	XL
○ ○	<b>Interior (continued)</b>
— ○	Power adjustable accelerator and brake pedals (requires auto. trans.)
— ●	Power door locks
— ●	Power windows with one-touch-down driver's-side feature
○ ●	Speed control/tilt steering (optional on XL – with bench seat only)
— ●	Steering wheel – Leather-wrapped, color-coordinated
— ●	Tachometer
● —	Visor – Cloth (driver strap/passenger mirror)
— ●	Visor – Cloth (driver and passenger, covered mirror)
	<b>Exterior</b>
● ●	Regular Cab – 2 doors
● ●	SuperCab – 4 doors
○ ○	6.5' Styleside cargo box
● ●	6.5' Flareside cargo box (N/A on SuperCab)
○ ○	8' Styleside cargo box
○ ○	Fog lamps (standard on XLT 4x4)
— ●	Grille surround – Body-color (XLT 4x4)
● ●	Grille surround – Chrome (XL and XLT 4x2 models)‡‡‡
○ ●	Locking tailgate*‡
● —	Outside mirrors – Black manual
— ●	Outside mirrors – Black power
— ○	Paint – Lower two-tone
— ●	Privacy glass – Rear doors and rear window (SuperCab only)
● ●	Rear window – Fixed with solar tint
— ●	Rear window – Fixed with privacy tint (XLT SuperCab only)
○ ○	Rear window – Manual sliding
— ●	Remote keyless entry system
● ●	Step bars – Black platform (Styleside 4x2 only)
○ ○	Step bars – Black tubular (Styleside 4x4, Flareside – N/A with Bi-Fuel LPG)‡‡‡
— ○	Step bars – Chrome tubular
○ ●	Tow hooks – Front (4x4 models – requires fog lamps)
● —	Wheel-lip moldings – Black (Flareside only)
— ●	Wheel-lip moldings – Body-color (Flareside with monochrome paint only)
— ●	Wheel-lip moldings – Accent color (Flareside with two-tone paint only)
— ●	Windshield wipers – Speed-dependent interval

†Not available with SuperCab 4x2 LWB or SuperCab 4x4.  
††Required on SuperCab 4x2 LWB and standard on SuperCab 4x4.  
‡Included in 7700-lb. Payload Group A.  
‡‡Included in Payload Group ‡.  
‡‡‡Included in 7700-lb. Payload Group A 4x2.  
‡‡‡Optional on XL with Work Truck Group.  
‡‡‡Optional on XL with Work Truck Group – Fleet only.  
‡‡‡Not available with Work Truck Group.  
‡‡‡Available as part of the XL Convenience Group.

## MODEL-SPECIFIC GROUPS

XL	XL
XL	XL
○ ○	<b>Class III Trailer Tow Package</b> – Includes Class III hitch receiver, 7-pin wiring harness, heavy-duty shocks (4x4), 72-AH battery and 14-plate transmission cooler with automatic transmission.
○ ●	<b>Convenience Group</b> – Includes speed control, tilt steering wheel, overhead console and tailgate lock.
○ ○	<b>Payload Group #3</b> – Upgrades GVWR to a maximum of 6600 lbs. Available with 4x2 Regular Cab Styleside 139" wheelbase with V8 and automatic transmission. Includes P255/70R16 all-season BSW tires, 3.55 axle with an optional 3.55 limited-slip rear axle and heavy-duty springs.
○ ○	<b>7700-lb. Payload Group A</b> – Upgrades GVWR to 7700 lbs. Available with Alternative Fuel Packages on 4x2/4x4 Regular Cab and SuperCab Styleside with 139" wheelbase only. (Requires 5.4L V8 NGV and automatic transmission.) Includes upgraded radiator, frame, shock absorbers, springs and 14-plate oil cooler. Also includes 72-AH battery, higher capacity 16" styled-steel 7-lug wheels, LT245/75R16 all-season BSW tires (4x2) or LT245/75R16 all-terrain OWL tires (4x4) and 3.73 axle with optional 3.73 limited-slip rear axle.
○ —	<b>Work Truck Group</b> – Replaces standard XL features: chrome bumpers replaced with Grey, chrome wheel hub ornaments replaced with Grey, chrome grille surround replaced with Grey, cloth bench seat replaced with vinyl, deletes air conditioning. (AC available as a free-standing option).

● Standard ○ Optional — Not Available

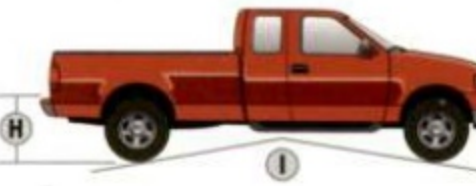
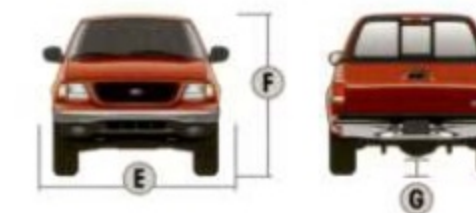
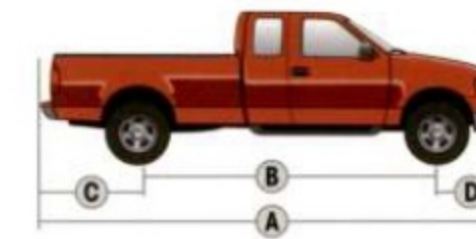
## SPECIAL ORDERS

Ford offers these and other Limited Production options through certified dealers to qualified customers or Fleets only. See your Ford Dealer for restrictions and qualifications.

XL	XL
XL	XL
● ●	Daytime running lights (Fleet only)
— ●	Carpet/floor mat delete – Replaced with black vinyl mat
● ●	License plate bracket – Front (Fleet only)
● ●	Engine block heater (Fleet only)
● ●	Power windows, locks, mirrors, remote keyless entry – Also available with Work Truck Group (Fleet only)
● ●	P255/70R16 all-season OWL tires (4) 4x2 (Fleet only)

● Standard ● Select Availability — Not Available

## DIMENSIONS



	Regular Cab 4x2/4x4	SuperCab 4x2/4x4
<b>Exterior</b>		
A. Overall length		
6.5' box	206.9"/207.2"	225.5"/225.8"
8' box	225.5"/225.8"	244.1"/244.4"
B. Wheelbase		
6.5' box	119.9"/120.2"	138.5"/138.8"
8' box	138.5"/138.8"	157.1"/157.4"
C. Overhang – rear		
6.5' box	48.3"	48.3"
8' box	48.3"	48.3"
D. Overhang – front	38.7"	38.7"
E. Overall width	78.3"	78.3"
F. Height*	73.4"/76.2"	72.8"/75.5"
G. Ground clearance (rear axle)	8.0"/8.1"	7.3"/8.1"
H. Loadfloor height*	33.2"/36.3"	32.3"/34.9"
I. Ramp breakover angle (SWB)	17.4°/21.7°	14.7°/18.7°
J. Angle of departure (SWB)	16.2°/19.9°	16.1°/19.8°
K. Angle of approach (SWB)	18.5°/26.0°	18.1°/25.8°

\*Styleside (SWB). SWB = Short Wheelbase

### Interior

	6.5' Styleside Box	6.5' Flareside Box	8' Styleside Box
<b>1st Row</b>			
Head room	40.8"	40.8"	40.8"
Shoulder room	63.8"	63.8"	63.8"
Hip room	61.0"	61.0"	61.0"
Leg room	40.9"	40.9"	40.9"
<b>2nd row</b>			
Head room	—	37.8"	37.8"
Shoulder room	—	63.8"	63.8"
Hip room	—	63.2"	63.2"
Leg room	—	32.2"	32.2"

	6.5' Styleside Box	6.5' Flareside Box	8' Styleside Box
<b>Cargo Area</b>			
Volume (cu. ft.)	58.6	50.2	72.6
Length at floor	78.8"	78.8"	97.0"
Width at wheelhouse	50.0"	50.0"	50.0"
Maximum inside width of box	65.2"	59.7"	65.2"
Height with molding	20.0"	20.0"	20.0"

Brochure effective for models produced after 12-1-03.  
Comparisons based on 2003 competitive models, publicly available information and Ford certification data at time of printing. Some features discussed may be optional. Vehicles shown may contain optional equipment. Features shown may be offered only in combination with other options or subject to additional ordering requirements or limitations. Following publication of the catalog, certain changes in standard equipment, options and the like, or product delays, may have occurred which would not be included in these pages. Your Ford Dealer is the best source for up-to-date information. Ford Division reserves the right to change product specifications at any time without incurring obligations.

WHEELS



16" Styled-Steel Wheel  
Standard on XL



16" Polished Aluminum Wheel  
Standard on XLT



16" Cast Aluminum Wheel  
Optional on XLT



16" 7-Lug Grey Styled-Steel Wheel  
Included with  
7700-lb. Payload Group A

ACCESSORIES



Your dealer can install a host of accessories designed to enhance your vehicle's look or performance. Our advice? Take 'em all. a) **bed-mount bike rack** b) **side window deflectors** c) **bug shield** d) **chrome grille insert** e) **steel grille guard** f) **color-keyed side step bars** g) **17" 5-spoke chromed aluminum wheels.**

It's snowing. That cup o' joe tastes really great. Just lean back, press the blue "key" on your **remote start** fob and your F-150 starts up. It'll be nice and toasty by the time you finish that second cup.



OK guys, now there's really no need to ask for directions. The **Satellite Navigation System** helps you keep your bearings.



With the **keyless entry keypad**, locking your keys in your truck is no longer cause for alarm. Just enter your programmed code and you're in. And since it operates by radio frequency, there's no hardware required for mounting.



See your dealer for these and other great dealer-installed Genuine Ford Accessories or visit us at [www.fordaccessoriesstore.com](http://www.fordaccessoriesstore.com).

INTERIOR/EXTERIOR COLORS



Medium Parchment Cloth



Medium Graphite Cloth



Dark Graphite Cloth



Dark Graphite Vinyl

			Medium Parchment
			Medium Graphite
			Dark Graphite
			<b>XL/XLT</b>
●	●	●	Oxford White
●			Arizona Beige Metallic
●	●	●	Bright Red
●	●	●	Medium Treador Red Metallic
●	●	●	Dark Highland Green Metallic
●	●	●	True Blue Metallic
●	●	●	Silver Metallic
●	●	●	Dark Shadow Grey Metallic
●	●	●	Black
			<b>XLT Two-Tone</b>
●			Oxford White/Arizona Beige Metallic
●	●	●	Oxford White/Silver Metallic
●			Bright Red/Arizona Beige Metallic
●	●	●	Bright Red/Silver Metallic
●			Medium Treador Red Metallic/Arizona Beige Metallic
●	●	●	Medium Treador Red Metallic/Silver Metallic
●			Dark Highland Green Metallic/Arizona Beige Metallic
●	●	●	Dark Highland Green Metallic/Silver Metallic
●			True Blue Metallic/Arizona Beige Metallic
●	●	●	True Blue Metallic/Silver Metallic
●			Dark Shadow Grey Metallic/Silver Metallic
●			Black/Arizona Beige Metallic
●	●	●	Black/Silver Metallic

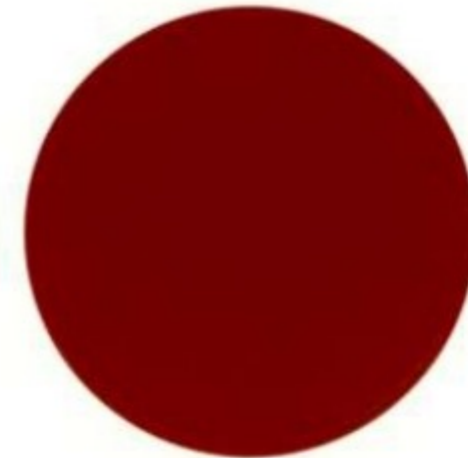
Ford uses clearcoat paint for beauty and protection. Colors shown are representative only. See your dealer for actual paint/trim options.



Oxford White



Arizona Beige Metallic



Bright Red



Medium Treador Red Metallic



Dark Highland Green Metallic



True Blue Metallic



Silver Metallic



Dark Shadow Grey Metallic



Black



Get the ride you want. Whether you plan to lease or finance, you'll find the choices that are right for you at Ford Credit. Ask your Ford Dealer for details or check us out at [fordcredit.com](http://fordcredit.com).



For a purchase or lease, the Ford Extended Service Plan gives you "Peace-of-Mind" protection designed to cover key vehicle components and protect you from the cost of unexpected repairs. Ask your dealer for an ESP backed by Ford Motor Company and honored at all Ford dealerships.



Choose the insurance program that's designed for your vehicle - Ford Motor Company Insurance Services. Our program helps you receive the rates and service you deserve. Call 1-877-367-3847 or visit us at [fordvip.com](http://fordvip.com) for a no-obligation quote. Insurance offered by American Road Services Company (in CA, American Road Insurance Agency), a licensed agency and subsidiary of Ford Motor Company.





IF YOU HAVEN'T LOOKED AT FORD LATELY...  
**LOOK AGAIN.**



As a corporate partner of the **American Quarter Horse Association**, Ford Motor Company is proud to be associated with this prestigious organization. We are honored to advance the interest in and the support of events that showcase the intelligence, strength and versatility of America's Horse™ and its rider.



Ford Division is a Founding Partner of the **Country Music Hall of Fame® and Museum**, located in Nashville, TN. Ford is proud to be associated with this prestigious facility and is dedicated to honoring the past by promoting the future of country music.



Ford is proud to be one of the oldest and strongest supporters of the **National Future Farmers of America Organization (FFA)**. Furthering the education of America's future leaders remains a priority for Ford Motor Company, Ford Division and Ford Dealers.



Ford is the Official Truck and Title Sponsor of the **Professional Bull Riders (PBR) Elite Built Ford Tough Series**. This 29-city tour provides some of the toughest entertainment around.



Legendary Ford Trucks are the **Official Trucks of NASCAR®**. Racing, endurance and the ability to really haul run in our respective veins – as does our love for running around in the winner's circle.

NASCAR® is a registered trademark of the National Association for Stock Car Auto Racing, Inc.



Ford is the Official Truck and the Presenting Sponsor of the **USHRA Monster Jam Series**. Ford is proud to also sponsor the Built Ford Tough **BLUE THUNDER**, one of the elite Monster Truck teams competing in the Series.



Ford Trucks are the exclusive and official automotive sponsor of the **Vans Triple Crown Series**. This series consists of a trio of competitions in each of the following categories: skateboarding, wakeboarding, snowboarding, surfing, freestyle motocross and BMX.



Ford Trucks are the Official Trucks of the **World Snowmobile Association 2003-2004 Snocross Worldwide Championship Series**. Ford proudly supports the WSA and the sport of snowmobile racing.

