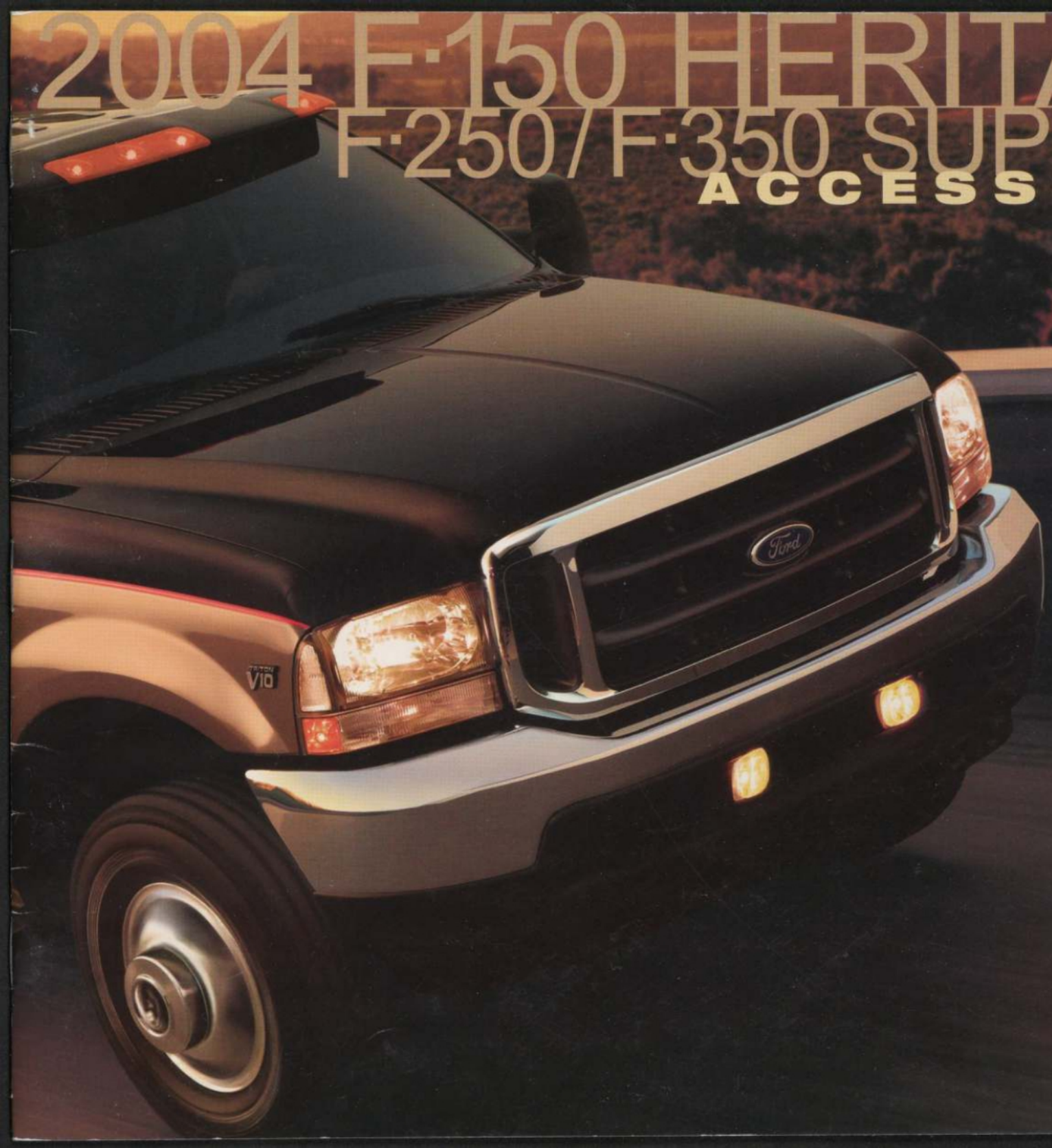


2004 F-150 HERITAGE F-250/F-350 SUPER DUTY ACCESSORIES



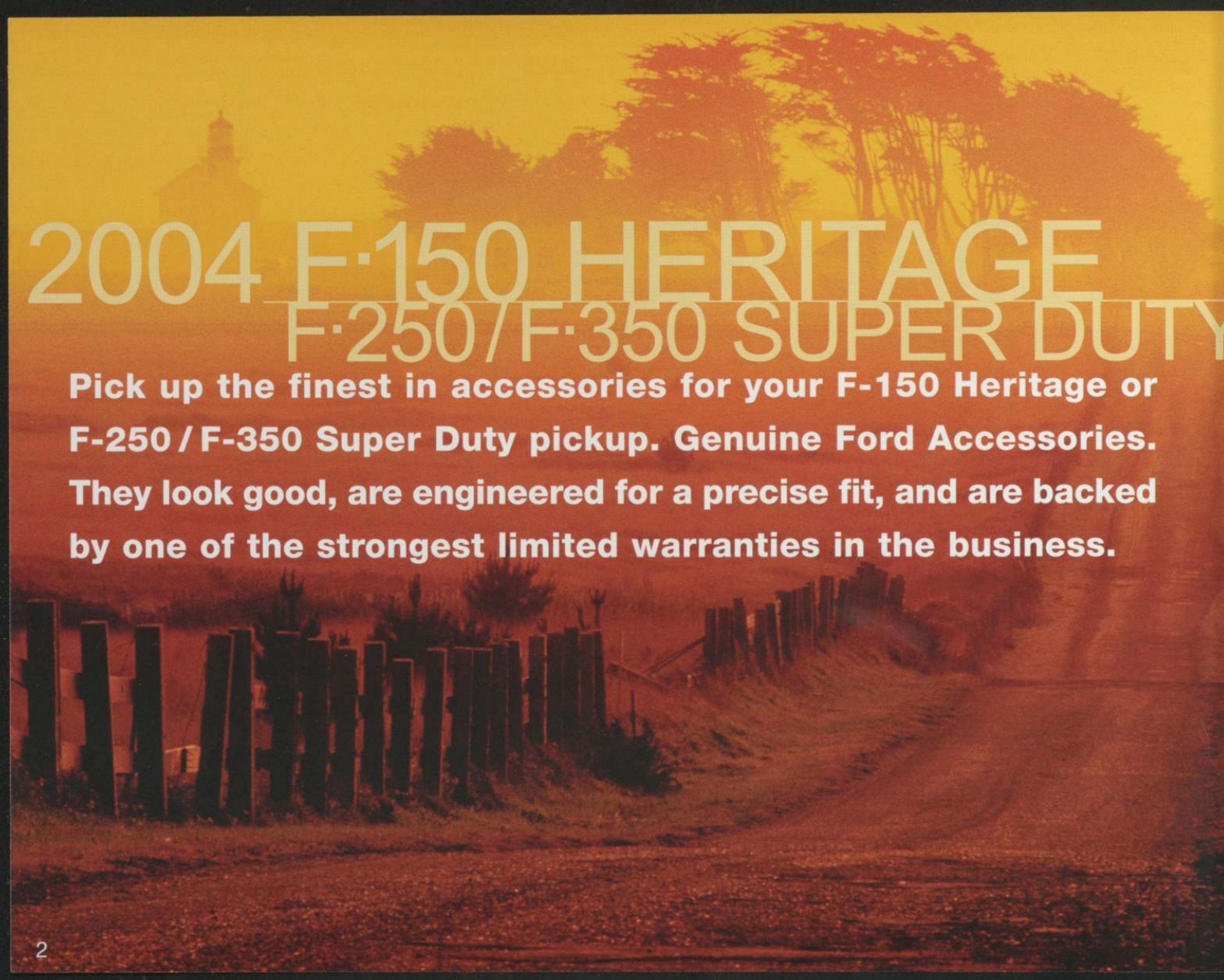
**PERSONALIZE
YOUR
F-150 HERITAGE,
F-250 AND
F-350 SUPER DUTY
WITH GENUINE
FORD
ACCESSORIES**

**GENUINE
ACCESSORIES**



fordaccessoriesstore.com





2004 F-150 HERITAGE F-250/F-350 SUPER DUTY

Pick up the finest in accessories for your F-150 Heritage or F-250 / F-350 Super Duty pickup. Genuine Ford Accessories. They look good, are engineered for a precise fit, and are backed by one of the strongest limited warranties in the business.

OUTWARD APPEARANCES **4**

DIAMOND PLATE **9** INSIDE MOVES **10**

SVT LIGHTNING **12** GET IN GEAR **13**

SAFE AND SECURE **14**

3



1



2



8



3



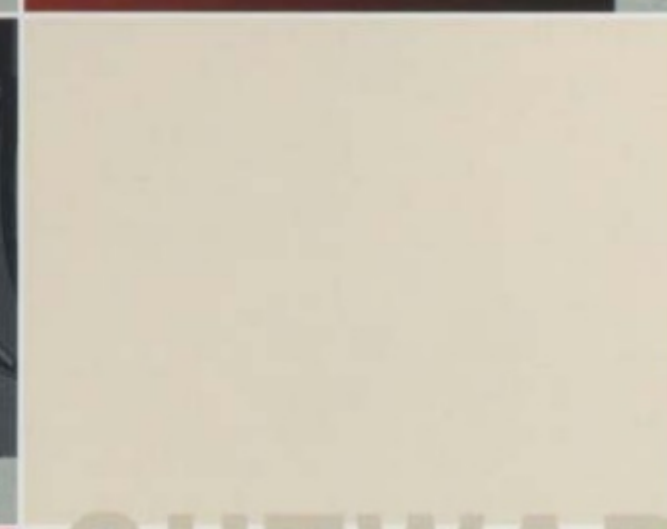
4



5



6



9

OUTWARD APPEARANCES



10



11



12



13



14



15



16

1. Lighted Running Boards*
These original equipment running boards feature lights at both ends to help make it easier to enter and exit from the cab. Lights activate when either a keyless entry fob is used or the vehicle's door is opened. Constructed of a corrosion-resistant, lightweight steel substructure with a durable black plastic cover. F-Super Duty only. Base Part No. **16450**

2. Stirrup Steps
Easy to install using existing holes. Heavy-duty, slip-resistant steps are offered in silver or black powdercoat finish. Front and rear sets of two are available to accommodate all cab configurations. F-Super Duty only. Base Part No. **20092**

3. 5-Inch Wide Chrome Step Bars*
New for 2004 model year. Corrosion-resistant, chrome-plated aluminum tubing is rugged yet lightweight. Uniquely designed slip-resistant step pad. Easy to install; no drilling is required. F-Super Duty only. Base Part No. **16450**

4. 4-Inch Wide Chrome Step Bars*
Corrosion-resistant, chrome-plated aluminum tubing is rugged yet lightweight. Slip-resistant step pads. Easy to install; no drilling is required. Base Part No. **16450**

5. 5-Inch Wide Black Step Bars*
New for 2004 model year. Corrosion-resistant, black powder-coated tubing is rugged yet lightweight. Slip-resistant step pad. Easy to install; no drilling is required. Base Part No. **16450**

6. 4-Inch Wide Black Step Bars*
Corrosion-resistant, black powder-coated tubing is rugged yet lightweight. Slip-resistant step pad. Easy to install; no drilling is required. Base Part No. **16450**

7. Styled Molded Running Boards*
Step up with these e-coated steel substructure running boards with a rugged plastic cover. Wide, ribbed step pads help provide sure footing. Available in black and prime/ready to paint. Base Part No. **16450**

8. Side Window Deflectors
Deflectors keep out snow or rain so you can crack open the window and let fresh air in. Durable, smoke-colored acrylic. Self-stick adhesive for easy installation. Base Part No. **18246**

9. Low-Profile Wraparound Bug Shield*
Protect the vehicle's front end from bugs, small stones and other debris. Durable, smoke-colored acrylic complements any exterior color. Easy to install. Base Part No. **16C900**

10. High-Profile Wraparound Bug Shield*
Protect the vehicle's front end from bugs, stones and other debris. Smoke-colored to enhance any exterior color. Features F-150 logo. Easy to install. Also available with Harley-Davidson® Bar and Shield logo. Base Part No. **16C900**

11. Door Edge Guards
Each set is custom made to the exact contours of your vehicle. Won't sag, slip, peel or rust – they're made of stainless steel and lined with a non-metallic material that won't scratch paint. No adhesives or screws needed for installation. Available in bright finish and black matte finish. Also available with Harley-Davidson® Bar and Shield logo. Base Part No. **20910**

12. Full Front End Cover
Heavy-duty vinyl shields front end from bugs, stones and off-road debris. Flannel backing minimizes moisture buildup between the cover and the painted surface. Multi-piece construction lets you open hood without removing the cover. Also available with Harley-Davidson® Bar and Shield logo. Base Part No. **19A414**

13. Moonroof Deflector
Durable, smoke-colored acrylic deflector helps reduce wind noise while letting fresh air flow in. Installs easily. F-150 Heritage only. Base Part No. **500A26**

14. Fender Flares*
Constructed of heavy-duty plastic that helps protect your vehicle from stones, gravel and other road debris. Available in select colors and primed (ready to paint). Styleside only. Easy to install. Base Part No. **16268**

15. Taillamp Surrounds
Add a custom look to any truck. Available in black, chrome-plated finish and primed. Easy to install with self-adhesive backing. Base Part No. **13B564**

16. Manual Sliding Rear Window*
Original equipment window provides extra ventilation and comfort. Features solar-tinted glass that helps reduce glare from the sun. One-way tint is also available. Base Part No. **422B30**

17. Molded Splash Guards
Deflect mud, snow and ice away from lower body panels. Contoured design complements vehicle lines and gives excellent protection. Heavy-duty plastic construction resists cracking. F-150 Heritage is available in Arizona Beige or black; F-Super Duty is available in black only. Packaged in pairs for front or rear. NOTE: Specify trim level. Base Part No. **16A550**

18. Flat Splash Guards
Guard against mud, snow and ice. Durable, thermoplastic splash guards are embossed with Ford logo. Packaged in a 2-piece set. Harley-Davidson® Bar and Shield logo available for F-Super Duty. Base Part No. **16A550**

19. Wheel Covers
Made of brightly polished stainless steel with a protective clearcoat finish. Packaged in sets of four. For trucks with single and dual (16" and 19.5") steel wheels. F-Super Duty only. Base Part No. **1A115**



19

*Eligible for residualization under a Ford Credit Red Carpet Lease.



20

20. Bedliner*

Conforms to the contours of the vehicle bed. Features the Duraloc™ cargo restraining system that allows the use of 2x4s to compartmentalize loads or create two-tiered stacking. Ribbed floor provides drainage and increased airflow between the bed and the liner to reduce mold, mildew and corrosion. Skid-resistant surface helps keep loads from shifting. Available for long or short beds. Available in black for all bed sizes, plus Arizona Beige for F-150 Heritage 6.5-ft. Styleside and F-Super Duty for both bed sizes. Available with Ford Oval logo. Base Part No. **000038**

21. Bed Mat

Custom-designed, heavy-duty rubber mat to protect your truck bed. Made of reinforced, synthetic rubber that resists cracking or breaking. Available in all bed sizes. Base Part No. **112A15**



21



22

22. Hard Tonneau Cover*

This unique hard fiberglass tonneau cover, manufactured by a Leer affiliate, dresses up your truck and helps protect its bed from the elements. Designed specifically for each vehicle, it can be locked to provide a secure trunk. Available in colors to match or complement your vehicle. Base Part No. **501A42**

23. Soft Tonneau Cover – With Snaps

Protect your vehicle's cargo area from the elements with this premium, heavy-duty, 20-oz. vinyl cover. The black aluminum rail system attaches securely and easily. Click-in-place rear rail offers easy access to cargo bed and features snaps made of a non-rusting composite material. Available in all bed sizes. No-drill installation. Base Part No. **501A42**

24. Soft Tonneau Cover – Snapless

Specially designed frame attaches directly to the rails of the pickup bed. This allows access to the bed without the need for removing the cover. Constructed of a durable gray vinyl. Available in long- and short-bed models. Base Part No. **501A42**



23



24



25



26



27

25. Original Equipment Fog Lights

For optimal vision and safety. Fog lights mount to the lower fascia of the front bumper with original equipment design that ensures proper fit. Dealer installation recommended. Base Part No. **15200**

26. Chrome Exhaust Tip

Slips over the end of the tailpipe. Constructed of heavy-duty, corrosion-resistant, chrome-plated stainless steel for long life. Easy to install; no drilling necessary. Base Part No. **5K238**

27. Brush/Grille Guard*

Constructed of aluminum tubing with a corrosion-resistant black powdercoat finish. Easy no-drill installation. Solid one-piece design. F-150 Heritage 4x4 only. Base Part No. **8307**

28. Signal® Mirror

Now you'll never get your signals crossed. Lighted arrow illuminates from behind the glass when turn signals or hazard flashers are activated. Kit replaces the mirror glass only – not the entire mirror housing. Complete wiring assembly is included. Dealer installation recommended. F-150 Heritage XLT only. Base Part No. **17K707**

29. Grille Inserts

Constructed of corrosion-resistant, 100% stainless steel. Mount directly over the factory grille with no drilling required. Base Part No. **8200**

30. Retractable Bed Hooks

An excellent way to tie-off and secure an awkward load or tarp. Easily installed using existing stake pockets in the pickup box. Hooks retract when not in use. Maximum load is 400 lbs. (180 kg) per hook. Two bed hooks included with each package. Available in black or stainless steel. F-150 Heritage only. Base Part No. **99000A64**



28



29



30



31



32

*Eligible for residualization under a Ford Credit Red Carpet Lease.



33 34

33. TracRac Adjustable Rack System

TracRac is an adjustable overhead rack system that allows you to expand cargo-carrying capacity. Base kit includes two triple-track base rails, two sliding overhead racks and four cross bar tie-downs. Extruded aluminum base rails mount to existing stake holes – no drilling required. System lets you slide or remove the overhead cross bars. Perfect for ladders, lumber or whatever the job demands. Constructed of anodized aluminum, TracRac is resistant to rust and corrosion. Specify long or short bed. Base Part No. **9955200**



35

34. TracRac Cargo Area Divider

Help prevent items like building materials or large tools from sliding around in the bed. The Cargo Holder slides independently on inner tracks and can also be reconfigured (in seconds) as a rear window guard/headache rack – no tools required. Base Part No. **9900092**



36

35. TracRac Toolbox Adapter

Now you can add an in-bed toolbox to the TracRac System. Lock the toolbox in the forward position for storage, or loosen the locks and slide the box to the rear of the bed for easy access. You can also slide the toolbox off the rack to maximize cargo capacity. Adapter includes hardware and instructions for easy installation. NOTE: Toolbox width in belly must not exceed 61.5" (156 cm). Base Part No. **9928546**



37

36. TracRac Locking TrackKnobs

Secure the TracRac or other accessories to the truck – simply replace the standard knobs with the TrackKnobs, twist the key and the component is locked in place. Sold in pairs with keys. Base Part No. **99000A25**

37. TracRac Basetrack Tie-Down

Sliding tie-downs provide a convenient place to attach a rope or bungee cord for securing cargo in the bed. Simply loosen the knob and slide the tie-down to the desired position. Sold in pairs. Base Part No. **99000A64**



39

38. Trailer Hitch Balls

Chrome trailer hitch balls available in 1 7/8" (4 cm) or 2" (5 cm) diameters. Hitch balls feature forged, one-piece construction for maximum strength and a chrome finish for corrosion resistance. Designed with wrench flats to aid installation and removal. Refer to your Owner's Guide for towing limitations. Available for vehicles equipped with a trailer hitch. Base Part No. **19F503**

39. Trailer Hitch Drawbars

Features a square tubular shank, heavy steel ball platform and a durable black powdercoat finish. Designed for 2" (5 cm) trailer hitch receivers, these drawbars can be used in the raised or dropped position to match the trailer coupler height. Two offsets available for 2" receivers: 0" drop/2 1/2" rise and 1 1/4" drop/4" rise. See your dealer or Owner's Guide for towing limitations. Base Part No. **19A282**



38

40. Trailer Hitch Receiver Cover

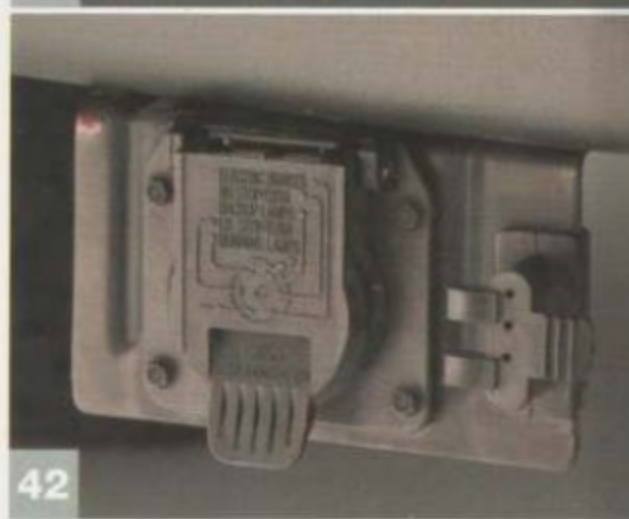
Provides a nice, clean look, while preventing dirt, mud and snow from clogging the trailer hitch receiver. Available with Ford logo for 2" (5 cm) or 1 1/4" (3 cm) hitch assemblies. Base Part No. **17F000**



40



41



42



43



44

41. Trailer Hitch Assembly – Class III/IV

Original equipment hitch bolts on to existing holes – no drilling or welding required. This Class III/IV has a 10,000 lb. (4,540 kg) towing capacity and 1,000 lb. (454 kg) tongue capacity. NOTE: Towing capacity could be limited by vehicle powertrain. See your dealer or Owner's Guide for details. Base Part No. **17D826**

42. Trailer Hitch Wiring Kit

This 7-pin wiring harness assembly is made to plug into the factory wiring harness at the rear of your vehicle. The 7-pin design allows the use of trailers with electric brakes. Includes a bracket for convenient attachment. Dealer installation recommended. Base Part No. **13A576**

43. Swivel Mount Trailer Hitch Drawbar

Make hooking up a trailer a snap with this innovative, swivel mount drawbar. You only have to get close to make the trailer connection. Then, just extend and rotate it as needed to connect to the trailer. Once the connection is completed, the automatic locking feature locks the unit into towing position. For 2" (5 cm) receivers. Does not include hitch ball. See your Owner's Guide for towing limitations. Base Part No. **19A282**

44. Telescoping Trailer Tow Mirrors – Manual and Power

Three styles available. *Manual* – When towing a load, the mirror telescopes out to help increase your range of vision. When not towing, the mirror slides in for normal range. Mirrors also include a forward-folding feature that helps minimize damage if one of them gets caught while the vehicle is backing out of a garage or other tight spot. *Power* – The same features as our manual mirrors, but the mirror glass features a power adjust. The telescoping feature is still manual. *Power/Heated* – Heated glass is added to minimize snow and ice build-up. NOTE: Power and Power/Heated mirrors are for vehicles equipped with power mirrors only. Not designed as an upgrade. F-Super Duty only. Base Part No. **17696**



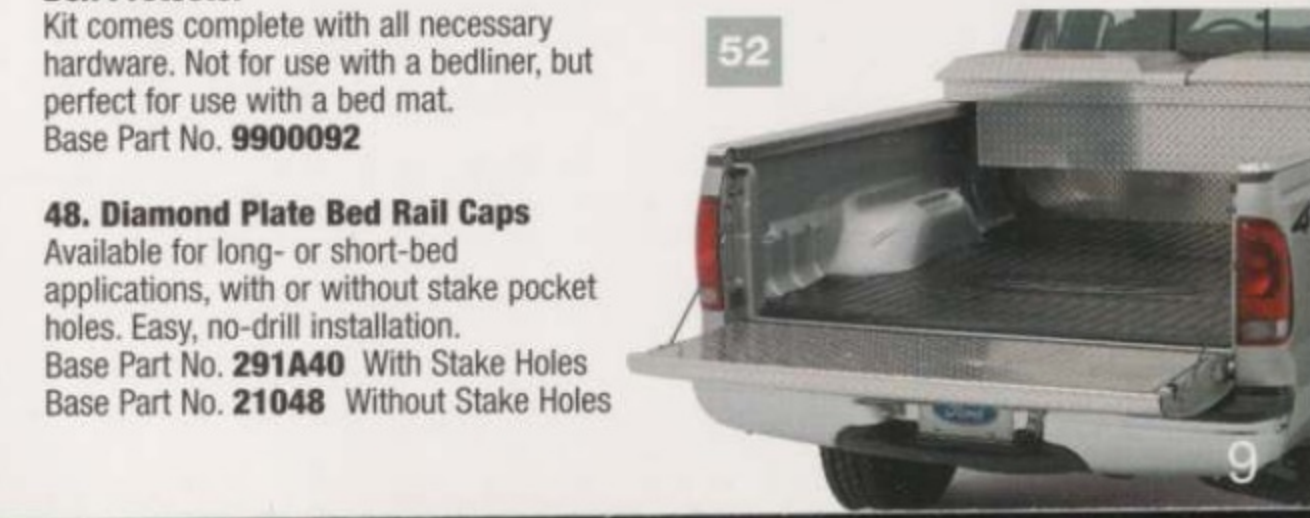
45 46



47 48

49 50

51



52

DIAMOND PLATE

49. Diamond Plate Running Boards*

Available for Regular Cab, SuperCab and CrewCab applications. Kits include front splash guards. Heavy-duty brackets attach to existing holes in the body for easy installation. Base Part No. **16450**

50. Diamond Plate Side Box Boards*

Extends running board to the front of the rear wheel well. Provides a convenient step to access the bed. To ensure a finished appearance, kit includes splash guards for the front of the wheel well. Base Part No. **16450**

51. Flat Rubber Splash Guards with Diamond Plate Insert

Extra-wide, heavy-duty guards available for F-Super Duty single and dual rear wheels, and front wheels. Base Part No. **16A550**

52. Diamond Plate Tailgate Protector

Wraparound design offers top edge protection. Easy, no-drill installation. Base Part No. **99000A38**

Diamond Plate

All Ford Diamond Plate accessories are constructed of heavy-gauge, Brite Tread aluminum with a clear powdercoat finish to help protect against corrosion and discoloration. All parts are designed to minimize the need for drilling during installation. In fact, most feature no-drill installations.

45. Diamond Plate Tool Boxes

Bright diamond plate in single- or double-lid design. Single lid opens from rear, double lid opens from either side. Both feature rubber matting, heavy-duty gas lift supports and locking paddle latches. For Styleside models only. Base Part No. **17N004**

46. Diamond Plate Splash Guards

These oversize guards are functional and rugged. Easy to install, they're also available for dually applications. Base Part No. **16A550**

47. Diamond Plate Front Box Protector

Kit comes complete with all necessary hardware. Not for use with a bedliner, but perfect for use with a bed mat. Base Part No. **9900092**

48. Diamond Plate Bed Rail Caps

Available for long- or short-bed applications, with or without stake pocket holes. Easy, no-drill installation. Base Part No. **291A40** With Stake Holes Base Part No. **21048** Without Stake Holes

*Eligible for residualization under a Ford Credit Red Carpet Lease.



Custom Wheels*

A selection of custom wheels is now available at your local Ford dealer. Designed specifically for your vehicle, they meet Ford's rigorous appearance, durability and corrosion-resistance requirements. Each wheel is kitted and includes the wheel, center cap and chrome lug nuts (most applications). Base Part No. **1007**

53. 1L3Z-1007-BA (black); 1L3Z-1007-AC (blue); fits F-150 Heritage

17" X 7.5" Bright machined aluminum split 5-spoke style. Includes center cap and chromed lug nuts. Center cap is available with either black or blue field behind Ford Oval.

54. YL1Z-1007-BA; fits F-150 Heritage

17" X 7.5" Chromed aluminum styled wheel. Includes center cap with Ford logo and anodized lug nuts.

55. YL1Z-1007-CA; fits F-150 Heritage

17" X 7.5" Painted aluminum styled wheel. Includes center cap with Ford logo and anodized lug nuts.

56. 1L3Z-1007-CA; fits F-150 Heritage

16" X 7" Bright machined aluminum 10-spoke style. Includes chromed plastic center cap (kit does not include lug nuts).

57. YL3Z-1007-EA; fits F-150 Heritage

16" X 7" Chromed aluminum 5-spoke style. Includes center cap and chromed lug nuts.

58. YL3Z-1007-FA; fits F-150 Heritage

16" X 7" Painted aluminum 5-spoke style. Includes center cap and chromed lug nuts.

59. 2L3Z-1007-AB; fits F-150 Heritage

17" X 7.5" Aluminum with mirror finish and dark painted pockets. Includes center cap with Ford logo and chromed lug nuts.

60. 2L3Z-1007-BA; fits F-150 Heritage

17" X 7.5" Bright machined aluminum 5-spoke style. Includes center cap with Ford logo and chromed lug nuts.

61. tbd-1007-tbd; fits F-Super Duty

18" X 8" Polished hot-forged aluminum 5-spoke style. Includes chromed center cap with Ford logo (4x4 center cap slightly different). Non-dual wheel applications only. Available 12/03.



INSIDE MOVES



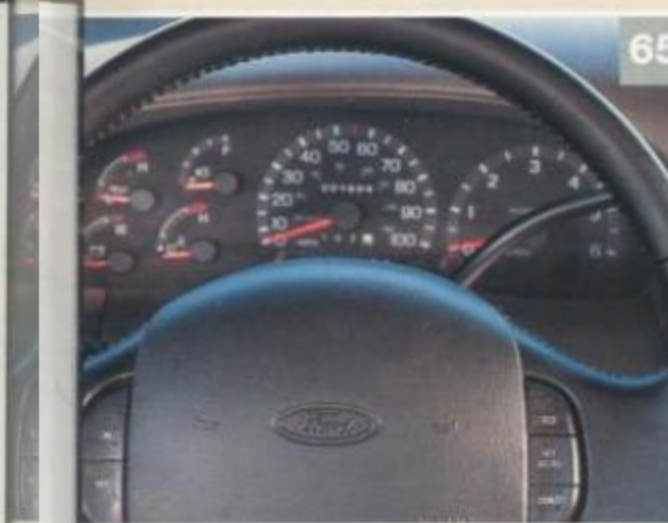
62. Interior Trim Kits

Give your interior a custom look. Woodgrain kits are designed to match factory grain. Molded to the contours of the dash and door panels. Depending on application, kits include dash and/or heater control surrounds and door trim pieces. Easy-to-install, adhesive-backed appliques. Base Part No. **04288**

63. GPS Navigation System

Three for the road: navigation, AM-FM tuner and CD player in one compact package. Offers turn-by-turn voice directions to the desired destination. At-a-glance directions displayed on screen. Replaces the factory-installed audio system. Separate bezel kit required for each installation. Dealer installation recommended. Base Part No. **18814** (Spring Clip Radio Bezel Kit - **10E991**)

*Eligible for residualization under a Ford Credit Red Carpet Lease.



64

65

66

64. Electrochromic Compass Mirror and Compass/Temp Mirror

Ease the discomfort of headlight glare in your rearview mirror. Mirror automatically dims when glare is detected. Features a built-in compass. Our Electrochromic Compass Mirror with Temperature Display has the additional feature of an outside temperature display. Switch lets you toggle between compass and temperature readings; set to Celsius or Fahrenheit scales. Dealer installation recommended. Base Part No. **17700**

65. Speed Control

Microcomputer-controlled system automatically adjusts the throttle to maintain your desired cruising speed. Fingertip controls are conveniently located on the steering wheel. Each kit contains a leather-wrapped steering wheel. Dealer installation recommended. Not available for F-150 Heritage with adjustable pedals. Base Part No. **9A818**

66. Leather-Wrapped Steering Wheel

Nothing beats the feel and grip of genuine leather. Available in colors to match or complement the interior. Dealer installation recommended. F-Super Duty only. Base Part No. **3600**

67. Rear Seat Cargo Organizer

For F-150 Heritage SuperCab pickups. Includes molded dividers that help separate belongings. Easy under-seat installation and removal - no tools required. Base Part No. **115A00**



68

69

68. All-Weather Vinyl Floor Mats

The deep grooves and raised ridges in these heavy-duty mats catch and hold snow, slush and mud, while protecting the vehicle carpeting. Nibbed backing and driver-side positive retention help keep mats in place. Front sold separately as 2-piece kits and rear as 1-piece kit. Available in colors that complement your vehicle interior. Harley-Davidson® Bar and Shield logo available for F-150 Heritage. Base Part No. **13086** Front Base Part No. **13106** Rear

69. Carpeted Floor Mats

Premium grade carpeting is custom fit to the exact contour of each vehicle. Driver-side mats have positive retention, and all mats have a nib backing to help prevent slippage. Sold as front 2-piece kits and rear 1-piece kit. Available with Ford or Lariat logo; F-150 Heritage also available with Harley-Davidson® Bar and Shield logo. Base Part No. **13086** Front Base Part No. **13106** Rear

SVT LIGHTNING



70



71

SVT LIGHTNING

70. Head Light and Side-Marker Light Kit

Set yourself apart. These SVT signature lights have clear crystalline lenses and are marked with thin horizontal lines, which accentuate the shape of the light's exterior surface. Easy installation for this 4-piece kit. Fits 1999-2003 F-150 and 2004 F-150 Heritage.

71. Rear Tail Lights

These unique, clear crystalline lenses are marked with very faint horizontal lines, which draw the eye to the light's exterior plane rather than its reflector and bulb. Easy installation for this 2-piece kit. Fits 1999-2003 F-150 Flareside and 2004 F-150 Heritage Flareside.

72. High-Mounted Stop Lamp

This high-mounted stop lamp for the rear cab's center consists of 10 light-emitting diodes, which are flanked by two clear-lens cargo lights. Fits 1999-2003 F-150 and 2004 F-150 Heritage.

72



Part numbers for the SVT accessories were not available at time of printing. Please see your Ford dealer for details.



73. ROC2® Hitch Mount Bike Carrier by Yakima

ROC2® fits into 2" (5 cm) hitch receivers. Has a swing-down feature that allows access to the rear cargo area. Holds up to two bikes. Carrier is secured to the hitch receiver with a lock system. Base Part No. 55100

74. BeddyJo Bike Carrier by Yakima

Installs in minutes without tools. Sturdy steel construction with foam padding to help protect your vehicle's finish. Holds up to two bikes. Fully compatible with bedliners. Base Part No. 55100



74

75. TerraFirma® Hitch Mount Bike Carrier by Yakima

Just like the ROC2®, except the TerraFirma® holds up to four bikes. Fits 2" (5 cm) hitch receivers. Carrier is secured to hitch receiver with locking system; cable lock secures bikes to carrier. Kit includes straps to keep bike wheels secure. Base Part No. 438A38

76. Bed Tent

No need to find a flat, dry campsite. This fully enclosed, water-resistant tent converts the pickup bed into comfortable sleeping quarters for two. Specially designed clips make installation easy. Four windows for full ventilation. Carrying bag included. Styleside only. Base Part No. 99000C38



73



75

GET IN GEAR

76



13

SAFE AND SECURE



77 78

77. Daytime Running Lamp Module

This system automatically activates the low-beams at 75% of their normal operating voltage whenever the ignition is in the "on" position. Dealer installation recommended. Base Part No. **13B218**

78. Daytime Running Lamp with Auto Headlamp Module

Never touch your headlamp switch again. System automatically switches the headlamps on whenever darkness is sensed. Also features a time delay that leaves the lights on for a preset amount of time after parking the vehicle. Daytime running lights will activate during daylight. Engineered for complete integration with vehicle electrical system. Dealer installation recommended. Base Part No. **13B218**

79. Remote Start Systems*

Enjoy the comfort and convenience of a pre-warmed or pre-cooled vehicle. Systems start vehicle from up to 500 ft. (150 m) away, and ensure that it's locked and that its security system (if equipped) is armed. Comes with two remote transmitters. Two systems to choose from: Remote starting only; and Remote starting and vehicle security. Available for automatic transmissions only. Dealer installation recommended. Base Part No. **19G364**

80. Keyless Entry Keypad

Conveniently unlock your vehicle without your key or keyless entry remote. No wiring necessary - programmable, backlit keypad tunes to the same frequency as your transmitter. Long-life battery (lasts 100,000 cycles). Easy no-drill installation. For vehicles equipped with factory remote keyless entry. Base Part No. **14A626**



79

81. Full Vehicle Cover

Constructed of multi-layer, non-woven, breathable material, NOAH® covers resist rain, snow, acid rain and bird droppings, and protect your vehicle's finish from UV rays and door dings. Features double-stitched overlapped seams, elastic sewn into the front and rear hems to help hold cover in place, and non-scratch grommets that can be used with a tie-down rope (included) or a cable and lock. Each cover has a silk-screened logo on front and a license plate view window in rear. Harley-Davidson® Bar and Shield logo available for F-Super Duty. Base Part No. **19A412**



81

82. Remote Keyless Entry*

If your vehicle is equipped with power door locks, the remote keyless entry will let you lock and unlock the doors from up to 50 ft. (15 m) away. System features remote illuminated entry, which turns on the dome light, and a one-button personal protection panic feature that activates the vehicle's horn. Includes two hand-held remotes. Dealer installation recommended. F-Super Duty only. Base Part No. **220K51**

83. Vehicle Security Systems*

Protect your vehicle with a state-of-the-art security system. These systems offer a full range of security features and come complete with pocket-sized transmitters. Three systems to choose from: Vehicle security only; Deluxe vehicle security; and Vehicle security with remote start. Includes a Lifetime Limited Warranty on parts (contact dealer for complete details). Dealer installation recommended. NOTE: Vehicles equipped with a security system may be eligible for insurance discounts in some states/provinces. Base Part No. **19A361**



80



82



83



84



86



87

84. Engine Block Heater

Keep the engine block warm for easier starting, faster warm-ups, and less fuel waste and battery drain. Just connect the heater to a grounded extension cord (not included) and plug into any 110-volt power source. Dealer installation recommended. Base Part No. **6D008**

85. Engine Block Heater/Battery Warmer (not pictured)

In addition to the engine block heater, this kit contains a Battery Warmer that wraps around the battery. Once it's installed, simply hook it up to any heavy-gauge extension cord (not included) and plug into a standard wall outlet. Dealer installation recommended. Base Part No. **10B732**

86. Locking Gas Cap

To prevent loss, a plastic tether attaches cap to the vehicle. Swing-away cover helps keep moisture and debris out of locking mechanism. Includes two keys. Base Part No. **9030**

87. Wheel Locks

For added protection against wheel theft, replace one lug on each wheel with one of these locks. Chrome-plated locks available for exposed lugs (shown); open-ended, zinc-plated locks available for hidden lugs. Kit includes four locks and key. Base Part No. **1A043**

88. Highway Safety Kit

Convenient carrying kit includes a reflective triangle, a flashlight, a fire extinguisher, bungee cords, a thermal blanket, cotton gloves, hose tape, a multifunction knife, Phillips and slotted head screwdrivers and a 12-hour light stick. Base Part No. **19F515**

89. Air Bag Anti-Theft Locks

Specially designed locks and key help deter theft of driver- and passenger-side air bags. Kit includes a window sticker to tell potential thieves that you're protected. Dealer installation recommended. Base Part No. **14B384**

90. First-Aid Kit

Compact case fits into glove compartment or center console so it's always there when you need it! Contains general first-aid items such as bandages, gauze, antibacterial ointment and more. Base Part No. **19F515**



90

*Eligible for residualization under a Ford Credit Red Carpet Lease.

Limited Warranty Information

Ford Motor Company will repair or replace any properly dealer-installed Genuine Ford Accessory found to be defective in factory-supplied materials or workmanship during the warranty period, as well as any component damaged by the defective accessory.

This means that Genuine Ford Accessories purchased along with your new vehicle and installed by the dealer at time of delivery are covered for the full length of your New Vehicle Limited Warranty – 3 years or 36,000 miles (whichever occurs first). If you choose at a later date to purchase a Genuine Ford Accessory, it will be covered for 12 months or 12,000 miles (whichever occurs first). Contact your dealer for details and a copy of the warranty.

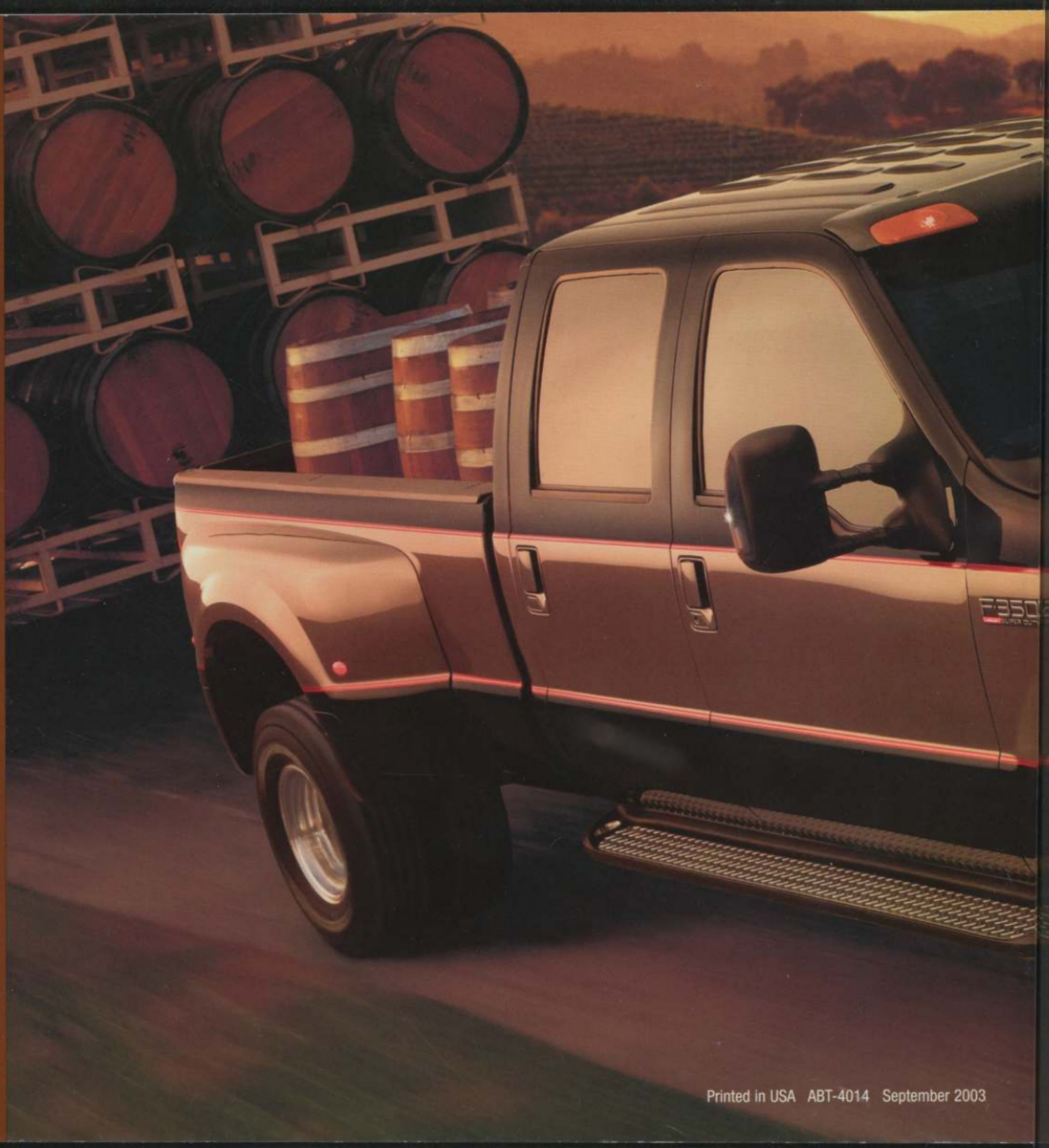
Red Carpet Lease

Get the ride you want. Many Genuine Ford Accessories purchased and installed by the dealer at lease inception can be paid for in your monthly lease payment. See your Ford Dealer for details.

ESP PremiumCare Plan

Depending on the ESP Plan you select, some dealer-installed Genuine Ford Accessories can be covered for up to 7 years or 100,000 miles. See your Ford Dealer for details.

NOTE: The product descriptions and specifications contained herein were correct at the time this material was being prepared for printing. However, our policy is one of continuous improvement, and we reserve the right to change design or specifications at any time without notice and without incurring obligation.



fordaccessoriesstore.com

Printed in USA ABT-4014 September 2003