

# 2004 LINCOLN NAVIGATOR MONOTONE APPEARANCE PACKAGE



## NAVIGATOR MONOTONE APPEARANCE PACKAGE HIGHLIGHTS:

• ORDER CODE: 62H

- Body-colored grille surround with argent grille
- Body-colored front/rear lower fascias
- Body-colored side cladding and running-board trim
- Body-colored license-plate surround
- Chrome Euroflange wheels
- Chrome exhaust tip

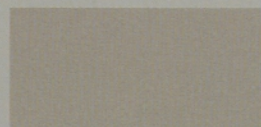


# 2004 LINCOLN NAVIGATOR MONOTONE APPEARANCE PACKAGE (62H)

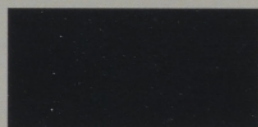


## Navigator Ultimate Array, plus:

- Body-colored grille surround with argent grille
- Body-colored front/rear lower fascias
- Body-colored side cladding and running-board trim
- Body-colored license-plate surround
- Chrome Euroflange wheels
- Chrome exhaust tip
- Available Colors:



Light French Silk (G3)



Black (UA)

**MSRP:** \$995 (taxes extra)

**BODY CODE:** U27 OR U28

**ORDER CODE:** 120A OR 220A

**PACKAGE CODE:** 62H

\*Full-size Luxury SUV. \*\*Shown with available power-deployable running boards (185).



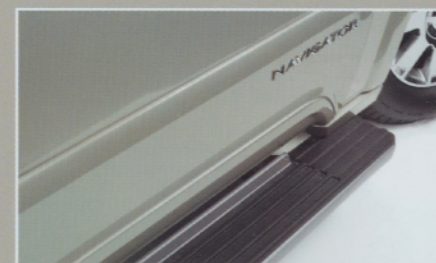
CHROME EUROFLANGE WHEELS



CHROME EXHAUST TIP



BODY-COLORED LICENSE-PLATE SURROUND



BODY-COLORED RUNNING-BOARD TRIM\*\*

## Key reasons to purchase a Navigator Ultimate:

### 1. Power features (class exclusive\*)

- Standard power liftgate
- Standard power-folding 3rd-row seat
- Standard power-adjustable pedals
- Available power-deployable running boards

### 2. Unsurpassed, luxurious interior

- New, contemporary Lincoln interior with American walnut burl wood, soft white lighting and leather trim
- Standard heated and cooled/climate-controlled front seats
- Flexible seating for 8 passengers
- Available rear-seat entertainment system
- Available touch-screen DVD satellite Navigation System with Lincoln Soundmark™ THX®-Certified CDx6 Audio System and Sirius satellite radio capability

### 3. Smooth, quiet, agile ride and handling complemented by rugged capability

- 4-wheel independent suspension
- Standard AdvanceTrac® with Roll Stability Control
- Available 4x4