

2004 NAVIGATOR



  
LINCOLN



A COMMAND PERFORMANCE.

WHAT MAKES A LINCOLN? Formality and luxury, tempered by an inviting charm. It's a unique formula born of decades of tradition. With its commanding presence, Lincoln Navigator owns whatever road it travels. Inside, the driver and passengers are surrounded by only the finest of appointments. Dramatic proof that Lincoln defines the difference between those who travel, and those who Travel Well.

Navigator Ultimate in Cashmere Tri-Coat (late availability) with available Monotone Appearance Package and power running boards.  
Navigator Ultimate shown on cover in Silver Birch Metallic with available 18" 8-spoke chrome aluminum wheels and power running boards.



Navigator Ultimate in Black with available 18" 8-spoke chrome aluminum wheels and power running boards.

WELCOME TO THE HEIGHT OF LUXURY.

P O W E R F U L L A M E N I T I E S .

I N N O V A T I V E L U X U R I E S .



POWER RUNNING BOARDS



POWER-FOLD HEATED EXTERIOR MIRRORS



POWER LIFTGATE



POWER-FOLDING 3RD-ROW SEATS

**EFFORTLESS EMPOWERMENT** In Lincoln Navigator, power is not simply reserved for under the hood. With the touch of a button or the lift of a door handle, your whole interior experience is powered with effortless grace. And you feel the empowerment that only Lincoln can provide.

**ROLL OUT THE RED CARPET** You'll feel like royalty with this Navigator class exclusive.\* To give you and your passengers an extra boost into the cabin, Navigator's power running boards glide out when the door is opened and retract when the door is closed. Available on Navigator Ultimate.

**MULTIPLE TALENTS** To provide clearance in tight spaces, Navigator's large, power-fold heated exterior mirrors fold in and out at the touch of a button. But that's only the beginning of their talents. Since they're electronically heated, they quickly melt ice and snow. Built-in turn indicators clearly signal your lane-change intentions, while a convenient memory setting recalls positions for 2 different drivers. And as you return to your vehicle in the dark, security approach lamps on the underside of the mirrors cast a warm glow of light whenever a key fob button is pressed or a door handle is lifted.

**YOUR LOADING DOCK** With Navigator Ultimate's standard power liftgate – a class-exclusive\* – simply press the button located on the key fob or the front overhead console and the liftgate raises and closes on its own. Loading is easy, even with your hands full.

**HIDE AND SEAT** Navigator's class-exclusive\* power-folding 3rd-row seats disappear at the touch of a button to create a flat loadfloor. They unfold just as easily to provide luxurious seating for up to 3 additional passengers. Standard on Navigator Ultimate.

\* Full-size Luxury SUV.

PURE LINCOLN.



Navigator Ultimate in standard 7-passenger seating configuration with 1st- and 2nd-row leather-trimmed bucket seats in Light Parchment.

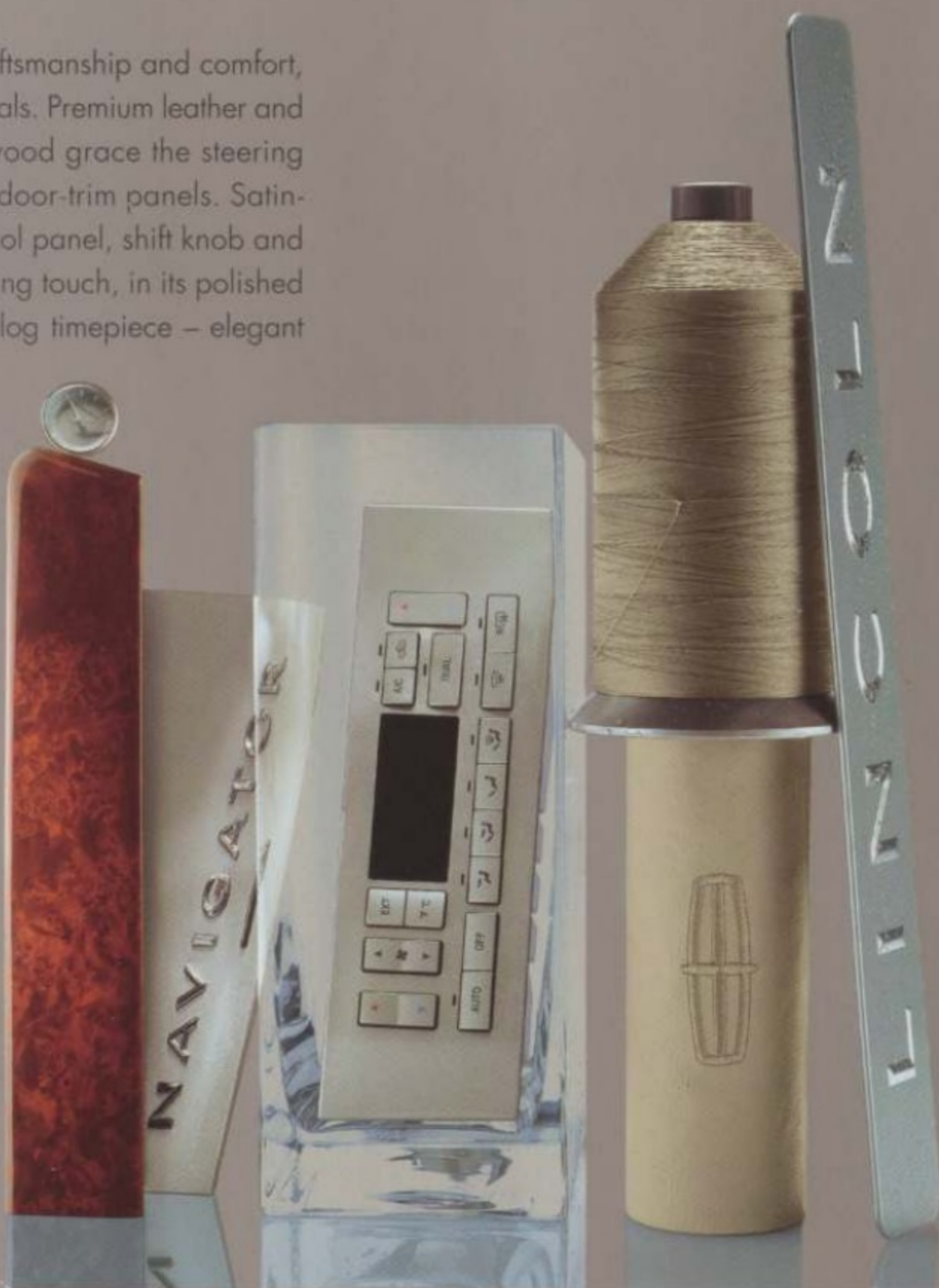
**TIMELESS DESIGN, FLAWLESS GRACE** These have always been the hallmarks of a Lincoln. And from the moment you open the door, Navigator's lineage is clear. The combination of style, design and materials creates an environment of sophistication and elegance to which no other luxury utility vehicle can compare.

The spacious cabin gives everyone room to stretch. Standard seating for 7 features 1st- and 2nd-row bucket seats with center consoles, and a 3rd-row bench seat. Choose the available 40/20/40 split-bench seat for the 2nd row, and your Navigator accommodates up to 8. This versatile 2nd-row seat folds flat when you need extra room for cargo. And since it's a Lincoln, all Navigator seats deliver just the right balance of luxury and support, with 1st- and 2nd-row seating areas trimmed in glove-soft premium leather.

## THE ART OF CONTROL.

**THE SEAT OF POWER** Gaze across Navigator's instrument panel and center console, and note their bold shapes and satin-nickel finish. While they may look like fine art, every Navigator control is also carefully designed for comfort and ease of use. The center console-mounted shifter is just the right size and height. The steering wheel features audio and climate controls that let you make adjustments without taking your hands from the wheel or your eyes off the road. Fine, white LED lighting illuminates the instrument panel, controls and other cabin amenities, creating an elegant ambience.

To create this sanctuary of craftsmanship and comfort, Lincoln utilizes the finest materials. Premium leather and rich, American walnut burl wood grace the steering wheel, instrument panel and door-trim panels. Satin-nickel accents adorn the control panel, shift knob and door handles. And the crowning touch, in its polished satin-nickel setting, is the analog timepiece – elegant and unmistakably Lincoln.





A S Y O U L I K E I T. EFFORTLESSLY PLEASING, UTTERLY COMPELLING.

NAVIGATION/THX-CERTIFIED AUDIO SYSTEM



**THE BEST OF BOTH WORLDS** It doesn't get any better: a Lincoln Soundmark™ THX®-Certified Audio System packaged with an easy-to-use Navigation System. THX Certification ensures the finest-quality sound. 300 watts of power, 9 speakers and a 6-disc in-dash CD player provide it. Just hit the Audio button, load your CDs and listen for hours. When you need directions, the Navigation System understands 174 commands and provides turn-by-turn voice guidance. It combines DVD mapping with Global Positioning System (GPS) satellite technology. A 6.5" color LCD screen presents high-quality graphics, while touch-screen simplicity and Map, Destination and Menu buttons make it a snap to use. This inspiring system is available on Navigator Ultimate.

AUDIOPHILE STEREO SYSTEM



**REVELATION IN SOUND** The standard Audiophile AM/FM stereo system includes an integrated 6-disc in-dash CD player, high-power amplifier, 9 Audiophile speakers with sail-mounted tweeters and a subwoofer. The system is specifically tuned to Navigator's interior to ensure crystal-clear reproduction. Signals from radio stations equipped with Radio Data Systems (RDS) display the station's name on the receiver.

**NON-STOP ENTERTAINMENT** To get even more performance from Navigator's stereo systems, add over 100 channels of coast-to-coast music, news and entertainment, compliments of the Sirius Satellite Radio service. For installation and activation details, see your Lincoln Mercury Dealer.

ENTERTAINMENT SYSTEM



**WATCH IT HERE** Enjoy DVDs, CDs and video games on Navigator's available overhead Rear-Seat Entertainment System. An infrared remote control allows viewers to make easy adjustments, while wireless headphones let them listen in comfort and help keep the cabin quiet. The flip-down 7" color LCD screen presents bright, sharp images. Storage for up to 4 DVDs resides in a pull-down bin on the front of the 2nd-row center console (if equipped).

**FINE IN BACK** Independent fan and temperature controls for the auxiliary climate control system let 2nd-row passengers control the rear cabin temperature.

AUTOMATIC TEMPERATURE CONTROL



**YOUR OWN ZONE** Dual-zone Electronic Automatic Temperature Control lets driver and front passenger select different temperatures. The system automatically maintains the desired settings on either side of the front cabin.

**ULTIMATE COMFORT** Class-exclusive\* heated and cooled driver and front-passenger seats take comfort into a whole new dimension. Adjust your seat to one of 5 different settings using the numbered dial conveniently located on the 1st-row center console. Standard on Navigator Ultimate, available on Luxury.

\* Full-size Luxury SUV.



D O I T A L L . E N D L E S S V E R S A T I L I T Y F O R E V E R Y O N E .

40/20/40 2ND-ROW BENCH SEAT



CONVERSATION MIRROR



1ST-ROW CENTER CONSOLE



**AS YOU CHOOSE** Navigator's available 2nd-row 40/20/40 split-fold bench seat accommodates 3 passengers and provides multiple seating options. In addition, an adjustable center section moves forward 11," giving the driver and front passenger convenient access to a child.

**NOW YOU SEE IT** With the simple touch of a button, the power-folding 3rd-row seats conveniently fold flat into the floor to make room for more cargo. Standard on Navigator Ultimate, it's a feature that no other vehicle in its class\* even offers.

**ABOVE AND BEYOND** Navigator's overhead console offers dual sunglasses storage, 1st-row map lights, power rear quarter window switches, auxiliary climate controls, conversation mirror and power liftgate switch (if equipped).

**FOUND THE REMOTE** The HomeLink® Universal Transceiver in the driver's visor can control the functions of up to 3 remote-control devices. Open and shut garage doors and security gates, activate and deactivate alarm systems, or control security lights at the touch of a button – without the need for multiple remotes.

**CONTROL CENTRAL** The satin-nickel-trimmed 1st-row center console houses a cavernous covered-storage bin with tissue and coin holders. Rear temperature and audio controls on the back allow 2nd-row passengers to control their own settings for these features.

**BIGGER IS BEST** Navigator's 8-passenger model boasts best-in-class cargo capacity of 104.7 cu. ft.\*\* with the 2nd- and 3rd-row seats folded down. Storage bins in the cargo area let you hide items from view.

\* Full-size Luxury SUV.  
\*\* Cargo and load capacity limited by weight and weight distribution.





Navigator Ultimate in Merlot Metallic with available Heavy-Duty Trailer Tow Package and 18" 8-spoke chrome aluminum wheels.

IN COMMAND. IN CONTROL.

**MUSCLE AND PUNCH** The all-aluminum 5.4L DOHC 32-valve InTech™ V-8 engine pumps out 300 hp and 355 lb.-ft. of torque. Supremely smooth and quiet, this V-8 delivers all the power you need to pass with confidence or tow heavy loads. In fact, when properly equipped, Navigator 4x2 lets you tow up to 8,600 lbs.; Navigator 4x4, up to 8,300 lbs. That's greater towing capacity than any other full-size luxury utility vehicle.

**FIRMLY GROUNDED** A class-exclusive\* front and rear independent suspension allows each wheel to handle road bumps with minimal effect on the opposite wheel. A smooth, controlled ride is the result.

**EFFORTLESS CONTROL** At low speeds, power, variable-assist rack-and-pinion steering makes Navigator easy to steer into parking spaces. At highway speeds, it adjusts for more precise response.

\* Full-size luxury SUV.

**STAY ON TRACK** Navigator's Roll Stability Control automatically provides more control in slick conditions. In certain understeer or oversteer situations, Roll Stability Control adjusts braking, traction control and engine output to correct vehicle direction to better follow steering input. This class-exclusive\* system also utilizes gyroscopic sensors to help the driver maintain control during an obstacle-avoidance maneuver and reduces the likelihood of a rollover event.\*\* Standard on Ultimate, available on Luxury.

**FULLY CAPABLE** 4x4 models feature the Control Trac® 4-Wheel-Drive (4WD) System. In Automatic (A4WD) mode, torque is sent to the wheels with the most grip in slippery on-road conditions. High-range 4-wheel drive (4H) is intended for off-road or low-traction driving. Low-range 4-wheel drive (4L) multiplies engine torque for extreme off-road conditions and very low-speed towing. A high-range 2-wheel-drive (2H) mode drives the rear wheels, for better fuel economy in everyday driving.

**ON THE LEVEL** Engineered to ensure a more even ride and comfortable journey, Navigator's 4-corner load-leveling air suspension automatically levels the ride according to payload and towing demands - and in off-road 4x4 conditions. When the engine is shut off with the vehicle in Park, Navigator lowers 1" for easier exit and entry.

\* Full-size luxury SUV.  
\*\* Remember that even advanced technology cannot overcome the laws of physics. It's always possible to lose control of a vehicle due to inappropriate driver input for the conditions.



O N G U A R D. A D V A N C E D S A F E T Y A N D S E C U R I T Y S Y S T E M S.

SIDE-CURTAIN AIRBAGS



**SAFETY COCOON** Side-curtain airbags, part of Navigator's Safety Canopy™ System, deploy from the headliner in certain side-impact collisions or rollover events to offer enhanced head protection for passengers in the 1st and 2nd rows.

**INTELLIGENT PROTECTION** The Personal Safety System™ controls airbag energy-deployment levels and safety belt tension in the event of an accident – providing optimum protection for the driver and front passenger.

**STRAIGHT AND TRUE** Navigator's Anti-lock Brake System (ABS) helps prevent wheel lockup during hard braking by electronically "pumping" the brakes several times per second, providing greater steering control.

POWER-ADJUSTABLE PEDALS

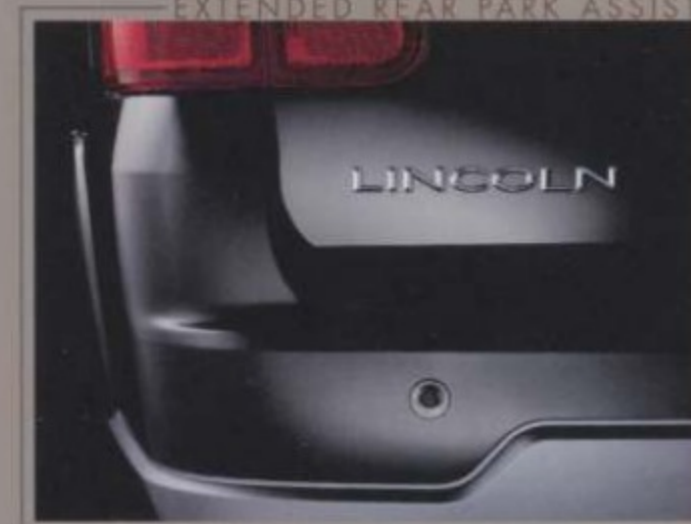


**EASY TO REACH** Every Navigator comes with power-adjustable brake and accelerator pedals. With 3" of travel and a memory feature for 2 different drivers, it's easy to move the pedals where you'd like them.

**INTUITIVE ASSISTANCE** Brake Assist senses a sudden stop and automatically applies the maximum pedal pressure to help you stop more quickly.

**FAIR WARNING** Navigator's Tire Pressure Monitoring System alerts you when any tire drops below operating pressure with a display in the message center.

EXTENDED REAR PARK ASSIST



**LOOKING OUT BEHIND** Extended Rear Park Assist alerts you with a beeping tone if an object comes within 20 feet of the rear bumper when in Reverse.

**HANDS OFF** The SecuriLock® passive anti-theft system prevents Navigator from being started without its specially coded key.

**NO KEY REQUIRED** Convenient and secure, Navigator's keyless entry keypad unlocks the door when you enter your personalized code. Or use the key fob to lock and unlock all doors, including the liftgate, from up to 33 feet away.



Navigator Ultimate in Silver Birch Metallic with available 18" 8-spoke chrome aluminum wheels and power running boards.

TRAVEL WELL. LINCOLN NAVIGATOR FOR 2004.



C O N F I D E N C E   W I T H I N .   T H E   L I N C O L N   C O M M I T M E N T .

**CORE INTEGRITY** For any luxury vehicle, structural integrity resides deep within. To isolate road noise away from the passenger cabin; to help eliminate squeaks and rattles; and to lend strength in the event of an accident, a rigid frame is essential. At Lincoln, every new vehicle is precision crafted to achieve the highest levels of structural rigidity. For Navigator, an incredibly rugged hydroformed frame improves driving dynamics over rough terrain while adding to an exceptionally quiet ride inside. To increase the durability and longevity of the frame, it is fully immersed in an electrocoat primer. This rock-solid chassis is the foundation of Navigator's commanding presence and assured composure on the road. But that's just the beginning.

**TECHNOLOGICALLY EMPOWERING** From Navigator's available power liftgate and power running boards, to its advanced On-Board Diagnostics (OBD II) System, Lincoln technologies serve the goals of safety, practicality and comfort. For example, Navigator's OBD II System continuously monitors and stores performance data for the life of your vehicle. Because of this, Lincoln certified technicians can pinpoint the cause of a technical problem almost instantly. Navigator's 4-speed automatic transmission employs an adaptive learning strategy that actually recognizes your style of driving and adjusts internal pressures to provide consistent shift feel. And a fail-safe cooling system allows Navigator to be driven a short distance on reduced power, even in the unlikely event of complete coolant loss.

**AT YOUR SERVICE** A luxury vehicle deserves an equally superior level of support and service. We have you covered on all counts. Complimentary maintenance makes driving your Lincoln even more of a pleasure. Simply bring your Navigator to an authorized Lincoln service center, and scheduled maintenance will be performed at no charge throughout your first year of ownership or 12,000 miles, whichever comes first.

A 4-year/50,000-mile bumper-to-bumper New Vehicle Limited Warranty covers repair, replacement or adjustment of parts at no additional cost. And Roadside Assistance for the same time period provides additional peace of mind. Your Lincoln Mercury Dealer will provide complete details on all of the privileges that come with owning a Lincoln.

## STANDARD LINCOLN NAVIGATOR EQUIPMENT

### LUXURY

#### PERFORMANCE

**Brakes** - power 4-wheel disc with Anti-lock Brake System, Electronic Brake Force Distribution and Brake Assist

**Cooling System** - fail-safe

**Drivetrain** - rear-wheel drive

**Engine** - 5.4L DOHC 32-valve V-8

**Stabilizer Bars** - front and rear

**Steering** - power, variable-assist, rack-and-pinion

**Suspension** - 4-corner load-leveling air suspension, independent front and rear

**Tires** - P255/70R18 all-season black sidewall

**Transmission** - 4-speed electronic automatic with overdrive

#### INTERIOR

**Ashtray** - located in instrument panel

**Assist Handles** - color-keyed, 2 in 1st and 2nd rows and assist pull in liftgate

**Audio** - Audiophile AM/FM stereo system with 6-disc in-dash CD player, driver-adjustable speed-compensated volume, 4 (2-way) speakers, front sail-mounted tweeters and 1 subwoofer. Sirius Satellite Radio capable

**Auxiliary Climate Control** - 2 overhead vents for 2nd and 3rd rows, controls in overhead console and back of 1st-row floor console

**Cargo Area Storage** - behind 3rd row under floor and bins in quarter trim panels

**Cigar Lighter** - located in instrument panel

**Climate Control** - Dual-zone Electronic Automatic Temperature Control with secondary steering wheel-mounted controls

**Clock** - analog, mounted between instrument panel center vents

**Cupholders** - 2 in 1st row, 4 in 2nd row and 3 in 3rd row

**Floor Consoles** - 1st row with floor shifter, power window switches, covered storage bin with chrome handle, 2 front cupholders, rear audio/climate controls, 2 headphone jacks, climate-controlled seat switches and 2 rear cupholders; 2nd row with padded armrest, covered storage and 2 cupholders

**Floor Mats** - carpeted, 1st and 2nd rows

**Glove Box** - lockable and illuminated

**Power Points** - located in 1st row, 2nd row and rear cargo area

**Rearview Mirror** - electrochromic (auto-dimming)

**Seats** - 1st row: leather-trimmed, low-back bucket seats, power 8-way seats with power lumbar and recline, 4-way adjustable head restraints and driver's-side memory; 2nd row: leather-trimmed low-back fold-down bucket seats with 2-way head restraints and easy entry to 3rd row; 3rd row: 60/40 fold-flat-into-floor split-bench seat with 2-way adjustable head restraints (outboard only) and center-seat integrated restraint

#### INTERIOR (continued)

**Visors** - dual blade with dual illuminated mirrors and driver's-side HomeLink® Universal Transceiver

#### EXTERIOR

**Antenna** - concealed

**Body-side Cladding** - color-keyed with lower accent color and color-keyed wheel-lip moldings

**Bumpers** - color-keyed upper fascia and accent-colored lower fascia

**Door Handles** - chrome strap with color-keyed bezel

**Fog Lamps**

**Glass** - privacy in rear doors, rear quarter windows and liftgate; solar-tinted in front doors and windshield; laminated side-door

**Grille** - chrome surround integrated with hood

**Headlamps** - quadbeam halogen

**Liftgate** - gas cylinder lift with flip-up glass

**Luggage Rack** - with bright accents

**Mirrors** - power-fold heated with security approach lamps, integrated turn signal indicators and memory feature

**Power Flip-Out Rear Quarter Glass**

**Rear-Window Defroster**

**Running Boards** - fixed

**Standard-Duty Trailer Tow Package** - Class III frame-mounted trailer hitch receiver integrated into rear fascia, 4-pin wiring harness

**Tow Hooks** - black, integrated into front fascia

**Wheels** - 18" 7-spoke machined cast aluminum with steel spare

**Wipers** - windshield: speed-sensitive intermittent with 3 washers; rear window: 2-speed intermittent with washer

#### SAFETY/SECURITY

**Airbags**<sup>1</sup> - dual-stage driver and front-passenger; side-curtain airbags as part of Safety Canopy™ System

**Autolamp** - automatic on/off headlamps with delay

**Battery Saver System**

**Brake Shift Interlock**

**Extended Rear Park Assist** - integrated in bumper

**Keyless Entry Keypad** - driver's door-mounted

**LATCH** - 2nd row: lower anchors and tether anchors for child safety seats, all seating positions; 3rd row: center tether anchor only

**Ford Motor Company Insurance Services** Choose the insurance program that's designed for your vehicle - Ford Motor Company Insurance Services. Our program helps you receive the rates and service you deserve. Call 877.367.3847 or visit us at [fordvip.com](http://fordvip.com) for a no-obligation quote. Insurance offered by American Road Services Company (in CA, American Road Insurance Agency), a licensed agency and subsidiary of Ford Motor Company.

#### SAFETY/SECURITY (continued)

**Locks** - 2nd-row child safety door

**Personal Safety System™** - including dual-stage front airbags with front crash severity sensor, sensors to detect front safety belt usage and driver's-seat position, front safety belt pretensioners and energy-management retractors

**Remote Keyless Entry** - illuminated with security approach lamps

**Safety Belts** - color-keyed 3-point restraints for all seating positions and height-adjustable for 1st and 2nd rows

**Safety Canopy System** - 1st- and 2nd-row side-curtain airbags with rollover sensors

**SecuriLock®** - passive anti-theft system

**Side-Intrusion Door Beams**

**Tire Pressure Monitoring System<sup>2</sup>**

#### INSTRUMENTATION/DRIVER CONTROL

**Accessory Timed Delays**

**HomeLink<sup>3</sup> Universal Transceiver** - located in driver's-side visor

**Instrument Cluster** - white LED back-lit cluster with speedometer, tachometer, fuel level, coolant temperature and message center

**Instrument Panel** - soft touch with American walnut burl wood trim and satin-nickel accents, power point, Control Trac® switch, headlamp controls, power-adjustable pedal controls and analog clock

**Memory Setting Controls** - mounted in door-trim panel for driver's-seat position, exterior mirrors and power-adjustable pedals

**Message Center** - includes compass display, distance-to-empty, average fuel economy, odometer and trip odometer

**Overhead Console** - includes 1st-row map lights, dual sunglasses storage, power rear quarter window switches, auxiliary climate controls, conversation mirror and power liftgate switch (if equipped)

**Power-Adjustable Pedals** - with memory

**Power Door Locks**

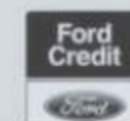
**Power Windows** - with one-touch-up/down driver's side

**Speed Control** - electronic, steering wheel-mounted

**Steering Wheel** - tilt, leather- and wood-trimmed with audio, climate, speed and Navigation System controls (if equipped)

<sup>1</sup> Always wear your safety belt and secure children in the rear seat.

<sup>2</sup> Excludes steel spare. <sup>3</sup> HomeLink is a registered trademark of Johnson Controls.



Get the ride you want. Whether you plan to lease or finance, you'll find the choices that are right for you at [FordCredit.com](http://FordCredit.com) and one of our manufacturer's representatives will help with anything from price quotes to product features to arranging a test drive at your local Lincoln Mercury Dealer - at no cost or obligation.

To ensure we're offering our customers the best service possible, we proudly offer the Lincoln Personal Consultant. Just visit our Web site at [Lincoln.com/pc](http://Lincoln.com/pc) and one of our manufacturer's representatives will help with anything from price quotes to product features to arranging a test drive at your local Lincoln Mercury Dealer - at no cost or obligation.

### ULTIMATE

In addition to or in place of equipment on Luxury:

**Roll Stability Control** - Electronic Stability Enhancement System

**Headlamps** - High-Intensity Discharge (HID)

**Heated and Cooled Seats** - driver and front passenger with 5 settings

**Moonroof** - power, includes unique overhead console

**Power-Folding 3rd-Row Seats** - 60/40 split-bench

**Power Liftgate**

## AVAILABLE EQUIPMENT

### LUXURY

#### ULTIMATE

○ **Audio** - AM/FM stereo/single CD/cassette player

○ **Audio/Navigation** - Lincoln Soundmark™ THX®-Certified Audio System including touch-screen DVD/Satellite Navigation System and 6-disc in-dash CD player, Sirius Satellite Radio capable

○ **Control Trac®** - 4x4 system

○ **5 Heated and Cooled Seats** - driver and front passenger with 5 settings

○ **Monotone Appearance Package** - color-keyed front and rear lower fascia, grille surround, license plate surround, running boards and side cladding with chrome exhaust tip (available with Black, Light French Silk\* or Cashmere Tri-Coat exterior)

○ **5 Moonroof** - power, includes unique overhead console

○ **Rear Seat Entertainment System** - includes 2nd-row overhead DVD player with infrared remote, flip-down 7" color LCD screen and 2 sets of wireless headphones

○ **5 Roll Stability Control** - Electronic Stability Enhancement System

○ **Running Boards** - power-deployable

○ **5 Seats** - 2nd-row 40/20/40 split-fold bench with premium leather trim and center section that slides forward up to 11" (not available with 4-wheel-drive models with power running boards)

○ **5 Heavy-Duty Trailer Tow Package** - includes frame-mounted Class III/IV hitch receiver, 4- and 7-pin wiring harness, heavy-duty flashers, transmission cooler and brake module wiring

○ **Wheels** - 18" 8-spoke chrome aluminum with P255/70R18 black sidewall all-season tires

○=Optional

\*Effective 3/1/04, Cashmere Tri-Coat replaces Light French Silk.

## DEALER ACCESSORIES



**MOBILE-EASE HANDS-FREE COMMUNICATION SYSTEM** Integrated into the audio system, Mobile-Ease features Bluetooth® technology that recognizes your Bluetooth-equipped cell phone. As long as your phone is in the vehicle, the system allows you to place and receive hands-free calls through the audio system.

**SWIVEL-MOUNT HITCH RECEIVER** For easy hookups, just swivel the hitch ball into position to the left or to the right and, once connected, the automatic locking feature locks the unit into position. Does not include hitch ball.

**REMOTE START** This powerful key fob allows you to start your Navigator from up to 500 feet away and ensure that it's locked.

**TERRA FIRMA® HITCH-MOUNT BIKE CARRIER** Designed for 2" hitch receivers, this carrier holds up to 4 bikes and has a swing-down feature that allows access to the rear cargo area. Includes straps to keep bike wheels secure.

See your dealer for these and other great Lincoln Mercury Dealer-installed accessories or visit [lincolnaccesories.com](http://lincolnaccesories.com).

## WHEELS

- A** 18" 8-spoke chrome aluminum  
Available on Ultimate and included with the Monotone Appearance Package
- B** 18" 7-spoke machined cast aluminum  
Standard on Luxury and Ultimate



## SPECIFICATIONS

### DRIVETRAIN

<b>Engine</b>	5.4L DOHC 32-valve V-8
<b>Layout</b>	Front engine, rear-wheel drive or available 4-wheel drive
<b>Horsepower</b> (hp @ rpm)	300 @ 5000 (SAE net)
<b>Torque</b> (lb.-ft. @ rpm)	355 @ 2750 (SAE net)
<b>Compression Ratio</b>	9.5:1
<b>Transmission</b>	4-speed electronic automatic overdrive with overdrive lockout
<b>Fuel Injection</b>	Sequential multi-port electronic
<b>Ignition</b>	Coil-on-plug
<b>Cooling System</b>	Fail-safe
<b>Axle Ratio</b>	3.73:1

### CHASSIS

<b>Suspension</b>	Front: Independent Short- and Long-Arm (SLA) with monotube dampers, air springs and stabilizer bar Rear: Independent Short- and Long-Arm (SLA) with toe link, monotube dampers, air springs and stabilizer bar
<b>Air Suspension</b>	4-corner load-leveling independent system
<b>Shock Absorbers</b>	Monotube with remote reservoir
<b>Steering</b>	Power, speed-sensitive, variable-assist rack-and-pinion
<b>Brakes</b>	Power 4-wheel disc Anti-lock Brake System (ABS) with Electronic Brake Force Distribution (EBD) and Brake Assist
<b>Wheels</b>	Standard 18" 7-spoke machined cast aluminum
<b>Tires</b>	Standard P255/70R18 BSW all-season
<b>Towing Equipment</b>	Standard-Duty Trailer Tow Package includes Class III frame-mounted hitch receiver and 4-pin wiring harness Available Heavy-Duty Trailer Tow Package includes Class III/IV load-distributing hitch receiver, 4-pin and 7-pin trailer wiring harness, heavy-duty flashers and transmission cooler
<b>Trailer Weight</b>	2WD: 8600 lbs. max. 4WD: 8300 lbs. max.

### DIMENSIONS

<b>Headroom</b>	39.6" 1st row; 39.7" 2nd row; 37.8" 3rd row
<b>Legroom</b>	41.1" 1st row; 38.7" 2nd row; 36.3" 3rd row
<b>Hip Room</b>	58.0" 1st row; 58.0" 2nd row; 50.2" 3rd row
<b>Shoulder Room</b>	63.3" 1st row; 63.4" 2nd row; 52.3" 3rd row
<b>Curb Weight</b>	5686 lbs. (2WD); 5947 lbs. (4WD)
<b>Wheelbase</b>	118.8"
<b>Length</b>	206.0"
<b>Height</b>	77.8"
<b>Width</b>	94.1" (mirrors extended); 82.2" (mirrors folded with fixed running boards); 80.2" (mirrors folded with power running boards)
<b>Track</b>	Front/Rear 67.0"/67.1"
<b>Ground Clearance</b>	8.6"; (9.5" for 4-wheel drive in low gear)
<b>Fuel Capacity</b>	28.0 gallons
<b>Cargo Volume</b> (cu. ft.)	103.3 max. (7-passenger); 104.7 max. (8-passenger) 54.6 max. behind 2nd-row seat; 17.9 max. behind 3rd-row seat

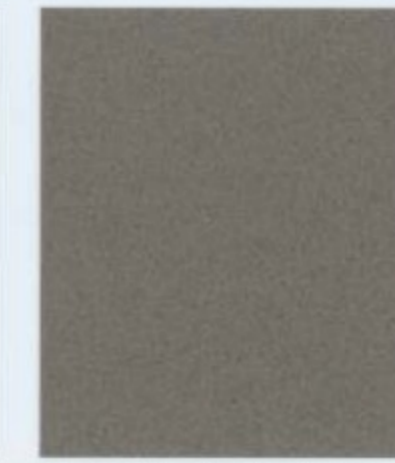
Cargo and load capacity limited by weight and weight distribution.



## EXTERIOR AND INTERIOR COLORS



BLACK



MINERAL GREY METALLIC



SILVER BIRCH METALLIC



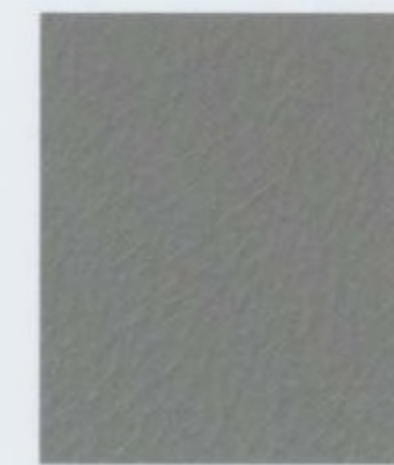
MEDIUM WEDGEWOOD BLUE METALLIC



TRUE BLUE METALLIC\*



MERLOT METALLIC



DOVE GREY

DOVE GREY  
LIGHT PARCHMENT



OXFORD WHITE



CASHMERE TRI-COAT\*\*



LIGHT FRENCH SILK METALLIC



LIGHT PARCHMENT

- ● BLACK
- ● MINERAL GREY METALLIC
- ● SILVER BIRCH METALLIC
- ● MEDIUM WEDGEWOOD BLUE METALLIC
- ● TRUE BLUE METALLIC\*
- ● MERLOT METALLIC
- ● OXFORD WHITE
- ● CASHMERE TRI-COAT\*\*
- ● LIGHT FRENCH SILK METALLIC

\*Available through February 2004. \*\*Late availability.



  
LINCOLN

Lincoln Test Drive 888.566.8888

Customer Assistance 800.521.4140

Roadside Assistance 800.241.3673

Visit [Lincoln.com](http://Lincoln.com)

©2003, Lincoln Mercury, Ford Motor Company 04-2LNAVCA7 