



| Introducing 2004 MONTEREY |



MERCURY



Introducing the all-new Mercury Monterey for 2004, a clear indication of the bold new direction of Mercury. With distinctive style, exceptional comfort and innovative features, Monterey debuts as the preeminent luxury minivan, and our safest minivan ever. Come along for the ride.



Monterey Premier in Silver Birch Metallic.
Shown on cover: Monterey Premier in Gold Ash Metallic with standard Forward and Reverse Sensing Systems.

| Modern

| Smart



THE STANDARDS OF MERCURY MONTEREY

From the beginning, the Mercury philosophy has been to provide more than is expected. To have attention to detail, distinctive form and intelligent thinking define the Mercury name. As the first long-wheelbase luxury minivan from Mercury, we've made sure that the all-new 2004 Monterey clearly lives up to these standards. At the same time, it provides these meaningful features that make driving truly enjoyable. And they're all standard on Mercury Monterey.

- 01 Forward and Reverse Sensing Systems**
Warn you of objects in front of or behind the vehicle when parking
- 02 Fold-Flat 3rd-Row Tailgate Bench Seat™**
Folds into floor easily for cargo space; flips around for tailgate use
- 03 In-Dash Storage Compartment**
Innovative storage on top of the instrument panel for easy driver access
- 04 Message Center**
Keeps you informed of important functions, including distance-to-empty
- 05 4-Wheel Disc Anti-Lock Brake System**
Helps prevent wheel lockup during hard braking
- 06 Power Driver's Seat**
Adjusts to your needs; ergonomically designed for ease of use



Monterey Premier in Black with standard Forward and Reverse Sensing Systems.



Monterey Premier in Silver Birch Metallic with standard Forward and Reverse Sensing Systems.



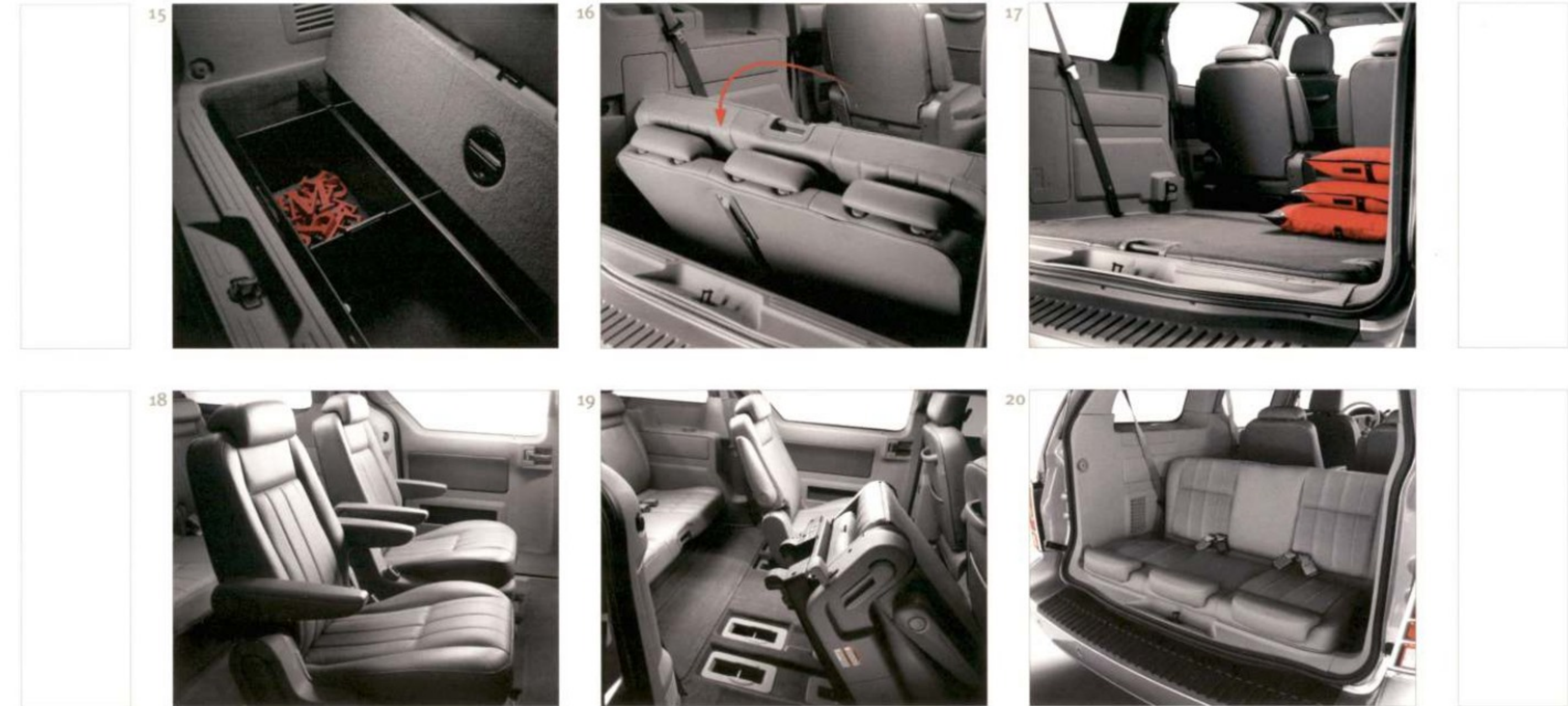
**DISTINCTIVELY
DIFFERENT,
WHETHER COMING
OR GOING**

Within the color-keyed circles on Monterey's front and rear bumpers are sensors for the standard **Forward and Reverse Sensing Systems (7)**, which alert you of the distance to objects in front of or behind the vehicle when parking. They're just one example of the unexpected delights you'll find on Monterey's exterior. Its many satin-aluminum accents work with a palette of bold, monochromatic paint colors to give Monterey a distinctive, sophisticated look. But as the sensors hidden in the front and rear bumpers can attest, it's a beauty that's more than skin deep.

08-11 Unique Styling Details The fog lamp bezels (8), waterfall grille (9), taillamp surrounds (10) and door handles (11) are satin-aluminum finish, adding elegance and a modern design flair.

11 Keyless Entry Keypad Above the driver's satin-aluminum-finish door handle, you'll find this convenient keypad. To lock or unlock the doors without fumbling for keys, just enter your personalized code. Standard on Luxury and Premier.

12 Power, Heated Exterior Mirrors with Integrated Turn Signals Standard on Luxury and Premier, these multitasking mirrors can be adjusted quickly with power controls. Better still, a convenient memory setting recalls programmed positions for 2 different drivers. Heat is activated whenever the rear-window defroster button is pressed. And integrated turn signals in each mirror let other drivers clearly know your lane-change intentions. As an added benefit, the signals flash whenever a power sliding door is opened, warning oncoming traffic that someone is exiting the vehicle.



IN TERMS OF FLEXIBILITY, IT'S FULL OF SURPRISES

You never know what to expect from one moment to the next. So in designing Mercury Monterey, we took some unusual measures to ensure its versatility. Engineers spent time with families to observe how people really use their vehicles. They even studied how limited motion affects drivers. This **thoughtful attention to detail** is evident throughout the design of Monterey in features like its 3rd-row Tailgate Bench Seat,[™] one of many items that will help you adapt to your day. No matter what it brings.

15 Cargo Management System To make Monterey's cargo well even more convenient, this collapsible cargo divider can be removed when not in use. Standard on Premier and available on Luxury and Convenience.

16-17 Fold-Flat-to-Floor 3rd-Row Seat When your needs shift from people to cargo, Monterey's 3rd-row Tailgate Bench Seat folds easily, then tucks neatly away into a recessed well in the floor. The result is a flat surface that provides convenient storage and easy loading of larger items.

18 2nd-Row Captain's Chairs After entering through one of Monterey's available dual power sliding doors, 2nd-row passengers can enjoy their own individual seats, complete with armrests. Assist handles on the front seatbacks help with entry/exit, while map pockets provide storage. Cloth seating is standard on the Convenience model; leather-trimmed seating graces Luxury models; and perforated leather trim defines the Premier.

19 Easy-Access 2nd-Row Seats Standard 2nd-row captain's chairs fold and tumble with the pull of a lever for remarkably easy access to Monterey's

3rd-row Tailgate Bench Seat. Thanks to a class-exclusive^{*} gas-assist strut, it's a simple one-handed operation. For maximum cargo capacity, 2nd-row seats can also be removed just by pulling a lever.

20 3rd-Row Tailgate Bench Seat Here's flip-fold flat-out fun: Monterey's 3rd-row seat. It quickly and easily tips backward to create a comfortable rear-facing tailgating seat,** perfect for parades, parties or relaxing.

*Class claim based on calendar year 2003 top-selling minivans plus 2004 Ford Freestar and Mercury Monterey. **3rd-row Tailgate Bench Seat should be changed and used only when vehicle is stopped and in Park. Rear-facing 3rd-row seat is not intended for passenger seating while vehicle is in motion.



Monterey Premier perforated leather-trimmed seats (1st and 2nd rows), shown in Flint.



CARGO MANAGEMENT, THE MONTEREY WAY



Inside Mercury Monterey, the details are so well thought out, even its features have features. Case in point: the carpeted cargo well behind the 3rd-row tailgating seat. Large enough to hold a set of golf clubs or several potted plants, the well is recessed so items stay in place. If you need to transport larger cargo, simply fold the 3rd-row seat into the well for a **completely flat loadfloor** with almost 70 cu. ft. of cargo volume. To further increase cargo space, simply fold and tumble the 2nd-row seats, or completely remove them. Space management has never been so easy.

- 13 Cargo Storage Well**
Convenient recessed storage; helps keep items upright
- 14 Instant Cargo Space**
Fold-flat 3rd-row seat offers an open floor plan

| Spacious

| Seating



**TAKE A SEAT,
THEY'RE HEATED
AND COOLED**

Interior comfort was key when we set out to design the Mercury of premier minivans. That's why you'll find **heated and cooled front seats** only in Monterey Premier. No other minivan even offers them. **Generous chrome and wood-grain accents** on Luxury and Premier establish a modern, contemporary feel. **Flush-mount controls** and available leather trim provide an ambience that is decidedly luxurious. The instrument panel is inviting and intelligently designed. Because you'll spend so much time here, we wanted to be sure it was time well spent.

21 Heated and Cooled Front Seats With this class-exclusive feature, the driver and front passenger can warm

or cool their seats with convenient instrument panel controls. Standard on Premier.

22 Instrument Cluster Bright chrome trim surrounds 4 easy-to-read analog gauges that prominently display critical driving information.

23 Remote Key Fob Activation Power sometimes comes in small packages, as in Monterey's key fob. It controls the door locks, available dual power sliding doors and power liftgate.* With the Memory Package on Luxury and Premier, settings for the standard power-adjustable pedals, power driver's seat and power exterior mirrors can be remembered for 2 different drivers.

24 Electrochromic (Auto-Dimming) Rearview Mirror This courteous feature minimizes the reflection of vehicle headlamps by automatically dimming glass. Standard on Luxury and Premier.

25 Conversation Mirror Observe your rear-seat passengers without having to turn around, compliments of this mirror in the full overhead console.

26 AM/FM Stereo/6-Disc In-Dash CD Player Monterey's Premium Sound System features a 6-disc in-dash CD player and speed-sensitive volume control. Standard on Luxury and Premier.

*Late availability.



Chrome and wood-grain accents abound on the Monterey Luxury and Premier instrument panel.



Monterey Premier in Silver Birch-Metallic with standard Forward and Reverse Sensing System and available power liftgate.



**POWERED
TO IMPROVE
YOUR LIFE**

Among the many pleasant surprises in Monterey are the wealth of features that pamper both you *and* your passengers. For example, access to the cargo area and 3rd-row Tailgate Bench Seat™ is easy with Monterey Luxury and Premier's available **power liftgate*** (shown in action at left). To open and close, simply press a button on the remote keyless entry key fob, or the overhead console, and the liftgate does the rest. Together with its dual power sliding doors, Monterey has the power to make your travels more enjoyable.

Everyone can sit back and enjoy the ride, thanks to Monterey's quiet interior cabin. Thick side-door window glass, a dash panel that absorbs noise, and additional sound insulation between the engine and passenger compartments all help to dampen noise. Rear passengers, once seated, can control their own environment while they watch a good movie. It's all thanks to Monterey's thoughtful design. And it's all in keeping with the Mercury philosophy of offering more than is expected. And who wouldn't be pleased with that?

27 Dual Power Sliding Doors Easy movement into and out of Monterey Luxury and Premier is made possible by these standard sliding doors. They open and close easily from controls inside the vehicle or by pressing a button on the remote keyless entry key fob.

28 DVD Entertainment System An available DVD player with a flip-down screen mounted in the ceiling offers you the finest form of in-vehicle entertainment. Its 7" color LCD screen is large enough for even 3rd-row guests to enjoy the show. Passengers can control the DVD player with a convenient infrared remote.

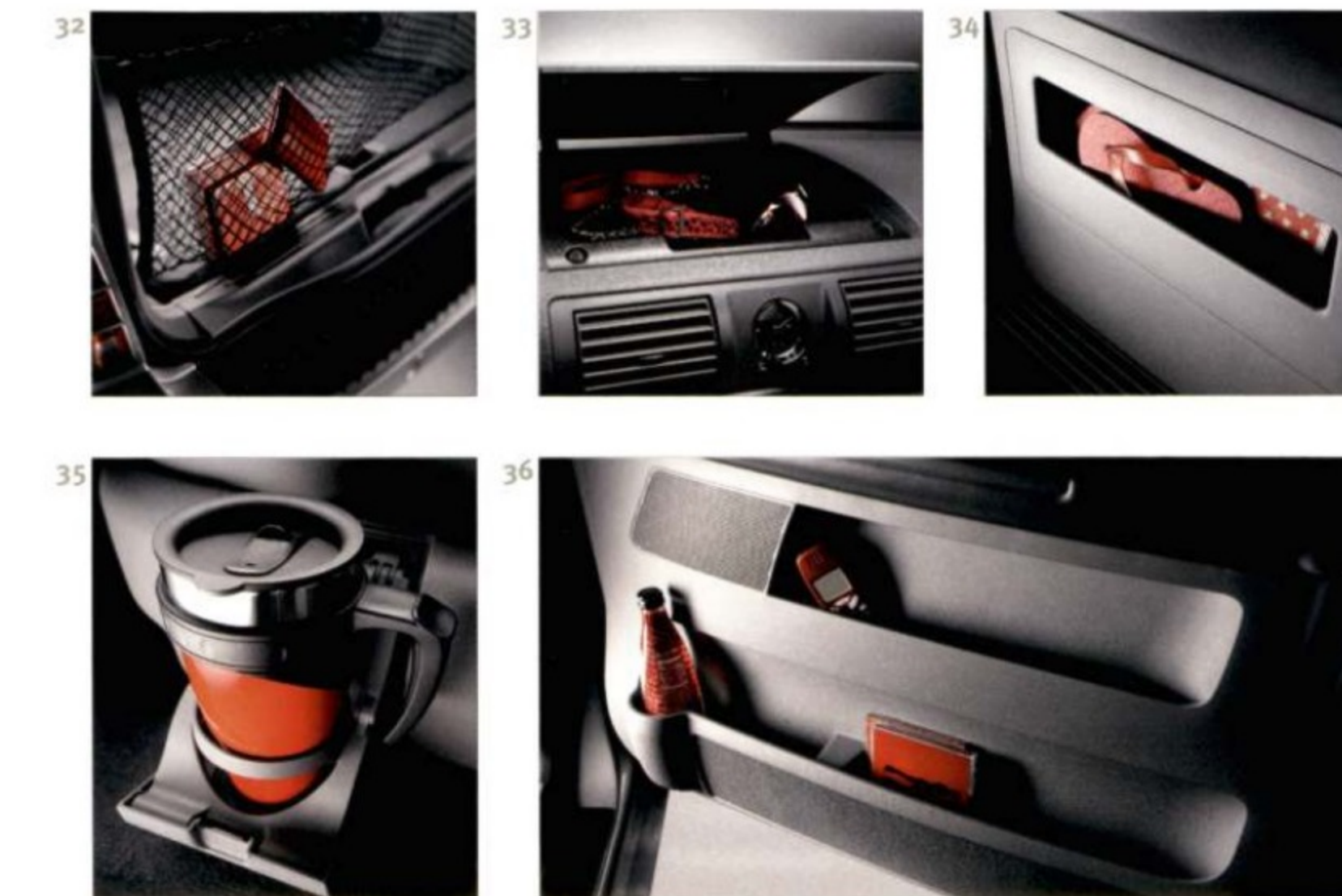
29 Wireless Headphones For a quiet cabin, 2 sets of wireless headphones allow rear passengers to listen in private (included with the available DVD Entertainment System).

30-31 Tri-Zone Climate Control The driver, front passenger and rear occupants can control their comfort levels independently. On Luxury and Premier, the system automatically maintains 2 different temperature settings for the 1st row. For the convenience of 2nd- and 3rd-row passengers, the rear climate controls are located in the ceiling above the 2nd row. This high-capacity auxiliary system provides both temperature and fan controls.

*Late availability.



Monterey Premier in Silver Birch Metallic with standard Forward and Reverse Sensing Systems.



**EVERYTHING
IN ITS PLACE**

Exceptional comfort. Exclusive luxury features. What's next in Monterey? Plenty of storage solutions. Throughout the interior, engineers devised innovative compartments for today's on-the-go lifestyle.

- 32 Cargo Net**
Helps keep packages secure (Luxury and Premier)
- 33 In-Dash Storage Compartment**
Keeps items close at hand and out of the way
- 34 Sliding-Door Storage**
Easy reach for 2nd-row passengers
- 35 Concealed Fold-Away Cupholders**
Located on the sides of 2nd-row captain's chairs; breakaway design allows for easy reconnection
- 36 Two-Tiered Front-Door Storage**
A Best-in-Class door storage system features 2 dual-bin storage pockets with room for maps or magazines



**FOR WHEN YOU
NEED IT MOST**

From its reinforced structure to its available self-sealing tires, Monterey is designed to protect – with **over 40 standard and available safety and security features**. Standard 4-wheel power disc brakes with dual-piston front calipers provide exceptional braking performance, while the Anti-lock Brake System (ABS) offers enhanced steering control during hard braking or on slippery surfaces. An Electronic Brake Force Distribution (EBD) system automatically balances brake force proportioning for various vehicle load conditions. In addition, the Low Tire Pressure Warning System alerts you to a potential problem with low tire inflation.

For protection in the event of a collision, every Monterey provides the **Personal Safety System™**. It features dual-stage driver and front-passenger airbags, a crash severity sensor, front safety belt usage sensors, driver's-seat position sensor, front-passenger's-seat occupant sensor, front safety belt pretensioners and front-seat energy-management safety belt retractors. In the event of a collision, the system quickly estimates accident severity and certain occupant conditions, then manages the front belts' tension and front airbags' deployment levels to provide enhanced protection for occupants.

Monterey's **Safety Canopy™ System with rollover sensors** is among the best protection packages available. It features side-curtain airbags, 1st-row side-impact airbags and class-exclusive rollover sensors. In certain types of side-impact collisions, side-curtain airbags deploy from the headliner for all 3 rows and stay inflated longer. This enhances head protection for outboard passengers and helps keep passengers in the vehicle. Standard on Luxury and Premier, available on Convenience models.



37 Security Approach Lamps For added security at night, lamps on the exterior mirrors illuminate the ground around the vehicle – automatically – when you press a button on the remote key fob or lift a door handle. Standard on Luxury and Premier.

38 Self-Sealing Tires Don't let a nail or piece of scrap iron stop you. Available self-sealing tires on Luxury and Premier seal up small holes before you're left stranded.

39 Power-Adjustable Pedals Brake and accelerator pedals can be adjusted up to 3" for improved driver comfort. Standard, including memory, on Luxury and Premier.

40 3-Point Safety Belts All Around Safety belts remain the best line of defense in the event of an accident. In Monterey you'll find 3-point belts in all seating positions, plus a driver's Belt-Minder® that emits a series of beeps until the belt is buckled.

41 AdvanceTrac® Electronic Stability Enhancement System In slippery conditions – like ice, gravel or rain – every driver wants one thing: more control. Monterey's available AdvanceTrac system provides it, automatically. Sensors constantly monitor driver input and vehicle responses. In certain understeer or oversteer situations, AdvanceTrac adjusts braking, traction control and throttle to correct vehicle direction to better follow steering input. The system can actually control each individual

wheel to counteract excessive vehicle rotation and possible vehicle spinout. That's peace of mind, when you need it most. Brake Assist, which maximizes brake pressure during a panic stop, and All-Speed Traction Control are included with AdvanceTrac. Standard on Premier, available on Luxury.

Remember that even advanced technology cannot overcome the laws of physics. It's always possible to lose control of a vehicle due to inappropriate driver input for the conditions.

THE RIDE OF
YOUR LIFE

In addition to all of the inner conveniences and luxury features, Monterey provides another key essential: power under the hood. In fact, Monterey's engine isn't just powerful, it's the **largest engine available in a minivan.**

4.2-Liter V-6 Engine Monterey's standard engine provides the highest torque in its class, giving you the power to accelerate, pass and climb hills with authority and confidence. You'll appreciate its 201 hp and 263 lb.-ft. of torque most when all 7 seats are occupied and the cargo bay is full. With Monterey's 26-gallon fuel tank, you'll have a generous driving range of over 500 highway miles. That's Dallas to New Orleans, without filling up. And the ride will be comfortable the whole way, thanks to a powertrain roll restrictor that dampens harshness. In addition, 3 liquid-filled hydromounts connect the engine to the frame to better isolate the passenger compartment from vibration.

4-Speed Automatic Transmission The standard V-6 is teamed with an electronically controlled automatic transmission with fast-acting hydraulics, giving Monterey powerful performance and smooth, effortless shifting. The torque converter provides better initial acceleration from a stop, while the 5-pinion final-drive gear improves durability.

Independent Front Suspension Monterey's MacPherson-strut independent front suspension features "reverse L" lower control arms with liquid-filled rear bushings that help isolate road impacts to provide a smooth, comfortable ride.



Monterey Premier in Matador Red Metallic with standard Forward and Reverse Sensing Systems.

| Driving

| Dynamics |

**CONVENIENCE
LUXURY
PREMIER**

EXTERIOR

- ◆ ◆ ◆ ANTENNA - concealed in right-side rear glass
- ◆ ◆ CLADDING - body-color with satin-aluminum-finish insert
- ◆ ◆ ◆ DEFROSTER - rear window
- ◆ ◆ ◆ DOOR AND LIFTGATE HANDLES - satin-aluminum-finish
- ◆ ◆ ◆ FOG LAMPS - with satin-aluminum-finish bezels
- ◆ ◆ ◆ GLASS - privacy on 2nd/3rd rows and liftgate
- ◆ ◆ ◆ GRILLE - satin-aluminum-finish
- ◆ ◆ KEYLESS ENTRY KEYPAD - driver's door-mounted
- ◆ ◆ LIFTGATE - power¹
- ◆ — — MIRRORS - power, high-gloss black
- ◆ ◆ — power, high-gloss black, heated with integrated turn signals and memory
- ◆ — — MOLDINGS - body-color with mud scuff
- ◆ — ROOF RAILS - black
- ◆ ◆ — satin-aluminum
- ◆ ◆ — black crossbars
- ◆ — — SLIDING SIDE DOORS - dual manual
- ◆ ◆ — dual power
- ◆ ◆ TRAILER TOW PACKAGE - Class II (3500 lb. max)²
- ◆ ◆ — WHEELS - 16" 6-spoke bright machined-aluminum (solid spokes)
- ◆ ◆ — 16" 6-spoke bright machined-aluminum (split spokes)
- ◆ ◆ ◆ WINDSHIELD WIPERS - front and rear interval with washers

SAFETY/SECURITY

- ◆ ◆ ADVANCETRAC[®] - includes Brake Assist and All-Speed Traction Control
- ◆ ◆ ◆ AUTOLOCK - doors lock automatically when driving
- ◆ ◆ ◆ BELT-MINDER[™] - safety belt reminder
- ◆ ◆ ◆ BRAKE SHIFT INTERLOCK
- ◆ ◆ ◆ BUMPERS - 5-mph energy-absorbing
- ◆ ◆ ◆ FORWARD AND REVERSE SENSING SYSTEMS - color-keyed sensors
- ◆ ◆ ◆ FUEL SYSTEM INERTIA SHUTOFF SWITCH
- ◆ ◆ ◆ LOWER ANCHORS AND TETHER ANCHORS FOR CHILDREN (LATCH) - 2nd- and 3rd-row outboard seating positions
- ◆ ◆ ◆ LOW TIRE PRESSURE WARNING SYSTEM
- ◆ ◆ PERIMETER ANTI-THEFT SYSTEM
- ◆ ◆ ◆ PERSONAL SAFETY SYSTEM[™] - for driver and front passenger with dual-stage airbags³, safety belt pretensioners, energy-management retractors, safety belt usage sensors, driver's-seat position sensor, front-passenger's-seat occupant sensor, crash severity sensor and restraint control module
- ◆ ◆ ◆ REMOTE KEYLESS ENTRY SYSTEM - with illuminated entry
- ◆ ◆ ◆ SAFETY BELTS - 3-point safety belts for all seating positions, 1st- and 2nd-row height-adjustable
- ◆ ◆ ◆ SAFETY CANOPY[™] SYSTEM - side-curtain airbags with rollover sensors and front-seat-mounted side-impact airbags
- ◆ ◆ ◆ "SAFETY CELL" - unitized body construction
- ◆ ◆ ◆ SECURILOCK[®] - passive anti-theft system
- ◆ ◆ SECURITY APPROACH LAMPS
- ◆ ◆ ◆ SIDE-IMPACT DOOR BEAMS
- ◆ ◆ TIRES - self-sealing
- ◆ ◆ ◆ WARNING LIGHTS - low fuel level, fuel cap off, low oil pressure, low washer fluid, brake system, ABS, charging system, high-beam indicator and tire pressure loss warning

INTERIOR

- ◆ ◆ ◆ ACCESSORY DELAY
- ◆ — — AIR CONDITIONING - tri-zone, manual front with rear auxiliary climate control system
- ◆ ◆ — tri-zone, automatic temperature control front with rear auxiliary climate control system
- ◆ ◆ ◆ ANALOG CLOCK
- ◆ — — AUDIO - AM/FM stereo with single CD/cassette player with speed-sensitive volume control
- ◆ ◆ — AM/FM stereo with 6-disc in-dash CD player (includes Personal Audio System with rear-seat controls) and speed-sensitive volume control
- ◆ ◆ AUTOLAMP - automatic on/off headlamps with delay
- ◆ ◆ CARGO NET - rear
- ◆ ◆ ◆ CARGO ORGANIZER
- ◆ ◆ CONSOLE, 1ST-ROW FLOOR - includes storage
- ◆ ◆ ◆ CONSOLE, FULL OVERHEAD - includes conversation mirror, coin holder, dual sunglasses holder, garage door opener holder, reading/dome lamps, provision for rear audio controls, and provision for power sliding door switches

**CONVENIENCE
LUXURY
PREMIER**

INTERIOR (continued)

- ◆ ◆ ◆ CUPHOLDERS - 9 (2 in instrument panel, 2 in front doors, 2 mounted in 2nd-row seats, 3 in 3rd-row quarter trim panels)
- ◆ ◆ ◆ FLOOR MATS - carpeted, front and rear
- ◆ ◆ HOMELINK[®] UNIVERSAL TRANSCEIVER
- ◆ ◆ ◆ LIGHT/VISIBILITY GROUP - front/rear dome lamps, 2nd-row reading lamps, 1st-row foot lamps, B-pillar lamps, front door courtesy lamps and 1st-row map lights (reading lamps, 3rd row - Luxury and Premier only)
- ◆ ◆ ◆ MESSAGE CENTER - includes outside temperature display, compass and warning lights
- ◆ ◆ MIRROR - electrochromic (auto-dimming) rearview
- ◆ ◆ POWER-ADJUSTABLE PEDALS - with memory
- ◆ ◆ ◆ POWER DOOR LOCKS - with child safety locks on rear sliding doors
- ◆ ◆ ◆ POWER WINDOWS - front with one-touch-down driver's-side feature
- ◆ ◆ — 3rd-row flip-open
- ◆ ◆ ◆ POWER POINTS - 1st row, 2nd row and rear cargo area
- ◆ ◆ REAR-SEAT DVD ENTERTAINMENT SYSTEM
- ◆ — — SEATS - cloth trim, 6-way power driver's seat with adjustable lumbar
- ◆ ◆ — leather-trimmed (1st and 2nd rows), 6-way power driver's seat with adjustable lumbar and memory, 6-way power passenger seat, heated driver and front-passenger seats
- ◆ ◆ — premium perforated leather-trimmed (1st and 2nd rows), 6-way power driver's seat with adjustable lumbar and memory, 6-way power passenger seat with adjustable lumbar, heated and cooled driver and front-passenger seats
- ◆ ◆ — 7-passenger
- ◆ ◆ ◆ SEATS, 1ST ROW - dual low-back buckets with adjustable head restraints and recline
- ◆ — — SEATS, 2ND ROW - fold-and-tumble dual captain's chairs
- ◆ ◆ — fold-and-tumble dual captain's chairs with fore/aft adjustments
- ◆ ◆ ◆ SEATS, 3RD ROW - fold-in-floor 3-passenger Tailgate Bench Seat[™]
- ◆ ◆ ◆ SMOKER'S PACKAGE
- ◆ ◆ ◆ SPEED CONTROL
- ◆ ◆ ◆ STEERING COLUMN - tilt
- ◆ ◆ ◆ STORAGE COMPARTMENTS - in 1st- and 2nd-row door-trim panels and top of instrument panel
- ◆ ◆ ◆ UTILITY HOOKS
- ◆ — — VISOR MIRRORS
- ◆ ◆ — illuminated

MECHANICAL

- ◆ ◆ ◆ 100,000-MILE TUNE-UP INTERVAL⁴
- ◆ ◆ ◆ BATTERY SAVER SYSTEM
- ◆ ◆ ◆ BRAKES - power 4-wheel disc with Anti-lock Brake System (ABS) and Electronic Brake Force Distribution (EBD)
- ◆ ◆ ◆ ENGINE - 4.2L OHV V-6 engine with split-port induction (SPI)
- ◆ ◆ ◆ EXHAUST SYSTEM - stainless steel
- ◆ ◆ ◆ FRONT-WHEEL DRIVE
- ◆ ◆ ◆ FUEL TANK - 26-gallon capacity
- ◆ ◆ ◆ MAINTENANCE-FREE BATTERY - 78 AH
- ◆ ◆ ◆ SPARE - large-diameter compact
- ◆ ◆ ◆ STABILIZER BARS - front and rear
- ◆ ◆ ◆ STEERING - power rack-and-pinion
- ◆ ◆ ◆ SUSPENSION - front: independent MacPherson strut; rear: torsion beam
- ◆ ◆ ◆ TIRES - P235/60R16 all-season BSW
- ◆ ◆ ◆ TRANSAXLE - 4-speed electronic automatic with overdrive lockout

◆ STANDARD ◆ OPTIONAL — NOT AVAILABLE

¹Late availability.

²Always wear your safety belt and secure children in the rear seat.

³Under normal driving conditions with routine fluid and filter changes.

SPECIFICATIONS

ENGINE	4.2L SPI V-6		
HORSEPOWER @ RPM	201 @ 4250		
TORQUE: LB.-FT. @ RPM	263 @ 3500		
TRANSMISSION	4-speed electronic automatic with overdrive		
AXLE RATIO	3.54:1		
TOWING* (MAX.)	2000 lbs.		
CURB WEIGHT	CONVENIENCE 4340 lbs.	LUXURY 4520 lbs.	PREMIER 4567 lbs.

DIMENSIONS (IN.)	1ST ROW	2ND ROW	3RD ROW
HEADROOM	38.8	39.7	38.1
LEGROOM	40.7**	38.0	32.7
SHOULDER ROOM	61.0	63.6	50.9
HIP ROOM	58.7	66.5	48.1

LENGTH	201.5		
WIDTH	76.6		
HEIGHT	68.8		
WHEELBASE	120.8		

CARGO AREA (CU. FT.)			
BEHIND 1ST ROW	134.3		
BEHIND 2ND ROW	69.6		
BEHIND 3RD ROW	25.8		

*When properly equipped. **Maximum.



WHEELS



16" 6-Spoke Bright Machined-Aluminum
Standard on Convenience and Luxury



16" 6 Split-Spoke Bright Machined-Aluminum
Standard on Premier

DEALER ACCESSORIES



42 Remote Start Allows you to start your Monterey from up to 500 feet away, ensure that it's locked and that its remote security system (if equipped) is armed. Choose from 3 systems: remote start only; remote start and keyless entry; or remote start, keyless entry and vehicle security.

43 Cargo Organizer Made of premium-grade polyethylene, this organizer features a removable and adjustable divider system to help separate belongings. Requires no tools for installation.

44 Highway Safety Kit This convenient carrying kit includes a reflective triangle, flashlight, fire extinguisher, bungee cords, thermal blanket, cotton gloves, hose tape, multi-function knife, Phillips- and slotted-head screwdrivers and a 12-hour lightstick.

45 Quarter-ROC® Hitch-Mount Bike Carrier by Yakima® Fits into 1 1/2" hitch receiver, holds up to 2 bikes and has a swing-down feature that allows access to the rear cargo area.

See your dealer for these and other great Lincoln Mercury Dealer-installed accessories or visit us at mercuryaccessories.com.

To ensure we're offering our customers the best service possible, we proudly offer the **Mercury Personal Consultant**. Just visit our Web site at mercuryvehicles.com/pc and one of our manufacturer's representatives will help with anything from price quotes to product features to arranging a test drive at your local Lincoln Mercury Dealer - at no cost or obligation.

Following the publication of this brochure, certain changes in standard equipment, options, prices and the like, or product delays may have occurred which would not be included in these pages. Your Lincoln Mercury Dealer is your best source for up-to-date information. Lincoln Mercury reserves the right to change product specifications at any time without incurring obligations. Options shown or described in this brochure are available at extra cost and may be offered only in combination with other options or subject to additional ordering requirements or limitations.



Get the ride you want. Whether you plan to lease or finance, you'll find the choices that are right for you at Ford Credit. Ask your Lincoln Mercury Dealer for details or check us out at fordcredit.com.

Ford Extended Service Plan

For a purchase or lease, the Ford Extended Service Plan gives you "Peace-of-Mind" protection designed to cover key vehicle components and protect you from the cost of unexpected repairs. Ask your Lincoln Mercury Dealer for an ESP backed by Ford Motor Company and honored at all Ford and Lincoln Mercury dealerships.

Ford Motor Company Insurance Services

Choose the insurance program that's designed for your vehicle - Ford Motor Company Insurance Services. Our program helps you receive the rates and service you deserve. Call 1-877-367-3847 or visit us at fordvip.com for a no-obligation quote. Insurance offered by American Road Services Company (in CA, American Road Insurance Agency), a licensed agency and subsidiary of Ford Motor Company.

EXTERIOR CHOICES

CONVENIENCE



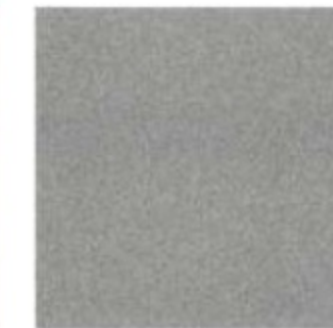
Arizona Beige Metallic



Spruce Green Metallic



Matador Red Metallic



Silver Birch Metallic



Black

LUXURY AND PREMIER



Gold Ash Metallic



Arizona Beige Metallic



Spruce Green Metallic



Norsea Blue Metallic



Matador Red Metallic



Silver Birch Metallic



Black

INTERIOR CHOICES

CONVENIENCE



Pebble cloth



Flint cloth

LUXURY



Pebble leather trim

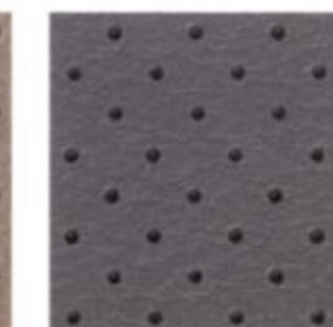


Flint leather trim

PREMIER



Pebble perforated leather trim



Flint perforated leather trim

Mercury uses clearcoat paint for beauty and protection. Colors are representative only. Please see your Lincoln Mercury Dealer for actual paint/trim options. Flint interior not available with Spruce Green exterior.



MERCURY

For a personal demonstration of Monterey or other 2004 Mercury vehicles, visit your Lincoln Mercury Dealer today. Be sure to ask about the Mercury CommitmentSM, a comprehensive benefits package for all new Mercury owners.

Mercury Test Drive 888.566.8888

Customer Assistance 800.521.4140

Roadside Assistance 800.241.3673



Two Great Locations To Serve You

www.varsityautos.com

Ford

Ann Arbor 734-996-2300

Lincoln Mercury

Novi/Wixom 248-305-5300

