



2024

# ELANTRA







## With Elantra, you make all the smart moves.

For 2024, our award-winning Elantra line of compact sedans take style, safety, comfort and connectivity to new levels. You'll see it in Elantra's chiseled body surfaces, aggressive new grille and striking alloy wheels – all born of Hyundai Design's new Parametric Dynamics concept.

Behind Elantra's new dual projector LED headlights – standard across the lineup – is a choice of power sources. On Elantra SE, SEL and Limited, a 2.0L gasoline engine balances robust performance and fuel efficiency. Elantra Hybrid incorporates electric power to deliver an EPA-estimated 54 combined MPG.<sup>1</sup> Elantra N Line's 1.6L Turbo engine adds substance to its motorsports-inspired style. Want the full transformation of our Hyundai N series high-performance models? Check out the turbocharged 276-hp Elantra N with its 6-speed manual or available N 8-speed Wet Dual Clutch Transmission.

Even before you step inside Elantra, smart technologies work seamlessly to welcome you. Download the MyHyundai with Bluelink app, and you can unlock the doors and start the engine of your new Elantra SEL, N Line or Limited using your compatible smartphone or smartwatch.<sup>2</sup> Apple Wallet,<sup>3</sup> Google Wallet and Samsung Pass<sup>3</sup> let you easily share your digital key with family or friends.<sup>3</sup>

Available ambient lighting sets the mood inside your Elantra with a palette of 64 colors. An available 10.25" touchscreen – the largest in its class – serves up a treasure trove of connected car features.<sup>4</sup> Standard Apple CarPlay<sup>5</sup> and Android Auto™ are available with wireless connectivity,<sup>5</sup> and Bluetooth<sup>6</sup> lets you connect two phones to the audio system simultaneously as you're streaming music.<sup>6</sup> So get ready to make the smart move – to Elantra.



<sup>1</sup>EPA estimates for comparison only. Mileage may vary. Your actual mileage will vary with options, driving conditions, driving habits and the vehicle's condition. <sup>2</sup>Near Field Communication (NFC) digital key requires a compatible iPhone,<sup>3</sup> Apple Watch,<sup>3</sup> Google Pixel or Samsung Galaxy<sup>3</sup> phone. Not all Android, Apple or Samsung devices are compatible. Digital key sharing requires an active Bluelink Advanced subscription (complimentary for the original owner). See your Owner's Manual for details and limitations. <sup>3</sup>Apple is a registered trademark of Apple Inc. Samsung is a registered trademark of Samsung Electronics Inc. Google is a trademark of Google LLC. <sup>4</sup>Claim based on comparison of specifications on manufacturer websites. <sup>5</sup>Apple CarPlay is a registered trademark of Apple Inc. Android Auto™ is compatible with Android™ phones running Android 5.0 or higher. Android Auto may not be available on all devices and is not available in all countries or regions. Additional apps may be required. Android and Android Auto are trademarks of Google LLC. <sup>6</sup>Simultaneous phone connection not available on Elantra SE.

ELANTRA Limited in Ultimate Red





<sup>1</sup>EPA estimates for comparison only. Mileage may vary. Your actual mileage will vary with options, driving conditions, driving habits and the vehicle's condition. <sup>2</sup>Drive Modes vary by trim level.

ELANTRA Limited in Ultimate Red



LED projector headlights and LED Daytime Running Lights



Redesigned steering wheel featuring haptic feedback



17" dark medium gray wheel

## Journey more, pump less.

Like every Hyundai, we designed the 2024 Elantra to be the sort of companion you'd want to have wherever your journey goes. You know, the sort of smart, reliable, fun and versatile partner that can turn each trip, even if it's just running errands around town, into a rewarding experience.

That's why Elantra comes standard with a Smartstream 2.0L Atkinson Cycle engine paired with a Smartstream Intelligent Variable Transmission. Together, these two advanced systems deliver smooth, sure power for comfortable cruising and confident passing. It's a highly efficient drivetrain that makes the most of its power while conserving fuel – Elantra SE has an EPA-estimated rating of up to 41 MPG on the highway!<sup>1</sup>

Once you are behind the wheel, you'll feel how fun Elantra is on the road – proving that it's possible to be both easy on

gas and a blast to drive. Select D for Drive on the sporty gear shifter and grab hold of the steering wheel. Then let Elantra show you how well it can handle itself in a corner. You'll quickly sense the firm bond forged between you, your Elantra and the pavement.

With a feature called Drive Mode Select, you choose how your Elantra's dynamics match your preferred driving style. Modes include Eco, Sport, Smart and Normal.<sup>2</sup> In any mode, Elantra moves with quiet confidence thanks to the seal of each door's glass being tighter and more secure, which helps keep high-frequency noise from intruding on the peace of the passenger cabin.

After all, you deal with enough noise out there in the real world, right? Let Elantra be your quiet sanctuary.



ELANTRA Limited LED combination taillights



# Elantra N Line and Elantra Hybrid: Variations on the theme of performance.

At Hyundai, we know that the word performance can mean different things to different drivers. To some, it defines the kind of responsive power and handling reflexes that makes driving exhilarating. To others, performance means efficiency and the use of electric motors to reduce emissions.

No matter how you define it, there are models in the 2024 Elantra lineup that match your definition. For drivers wanting more sporty power, there's Elantra N Line. And for those seeking electric power to lower their carbon footprint, we offer Elantra Hybrid.

On the Elantra N Line, dual chrome exhaust tips hint at the presence of elevated power. In this case, it's in the form of a turbocharged 201-hp engine. Controlling all of that torque is a 7-speed Dual Clutch Transmission with paddle shifters.

With each turn of the steering wheel, you will feel the firm grip of performance tires on redesigned 18" alloy wheels. As you start to carve corners, you'll sense the stabilizing effects of Elantra N Line's sport-tuned suspension.

Elantra Hybrid offers an advanced hybrid powertrain with segment-leading fuel economy.<sup>1</sup> Elantra Hybrid Blue has an EPA-estimated 54 combined MPG.<sup>2</sup> All from a 1.6L GDI engine, 32 kW electric motor and 6-speed EcoShift Dual Clutch Transmission that combine for 139 hp and 195 lb-ft of torque.

Both Elantra N Line and Elantra Hybrid feature a multi-link rear suspension for confident cornering. And both come equipped with braking systems that offer enhanced performance compared to standard Elantra models. So whether you press the pedal on the right, or the pedal on the left, the performance is impressive.



ELANTRA Hybrid Limited in Ecotronic Gray



N Line: Leather-wrapped sport steering wheel and shift knob



N Line: LED taillights and dual chrome-tipped exhaust outlet



N Line: Synthetic leather/cloth combination sport seats



<sup>1</sup>Segment comparison based on compact sedan competitors as defined by Hyundai Motor America. Claim based on comparison of specifications on manufacturer websites.  
<sup>2</sup>EPA estimates for comparison only. Mileage may vary. Your actual mileage will vary with options, driving conditions, driving habits and the vehicle's condition.

ELANTRA N Line in Amazon Gray





# Elantra N: Our sports sedan has sharpened its edge.

'N' is how Hyundai says performance in a single letter. N is for Namyang, our global R&D facility. It's also for Nürburgring, the legendary circuit in Germany where the bar is set for world-class performance. At both sites, an elite corps of Hyundai engineers test technology developed for our racing program in the FIA World Rally Championships, then apply it to street-legal machines like Elantra N.

For 2024, Elantra N has a new look that grabs attention from the get-go with a bold new grille, N-specific red trim and larger air intakes up front. At the back, there's a dual exhaust, a new fascia with rear diffuser and a rear wing spoiler. The stance is more aggressive, too, with new 19" wheels and MICHELIN® Pilot Sport 4S tires.

Beneath the skin, Elantra N's suspension is stiffer. Its steering ratio is quicker. And its brakes are beefier. A "Flat Power" 2.0L Turbo engine delivers 276 horsepower and 289 lb-ft of torque. Armed with Launch Control and an available 8-speed Wet Dual Clutch Transmission with N Power Shift, you'll sprint from 0-60 mph in about 5 seconds on the racetrack. Press that red button on the steering wheel, and you trigger an N Grin Shift overboost that adds 10 horsepower to Elantra N for 20 seconds.<sup>1</sup> A full-on N performance setting and two custom drive modes are accessed via the blue steering wheel buttons.

Cornering precision comes from Elantra N's electronic limited-slip N Corner Carving Differential and an Integrated Drive Axle that helps handle extreme lateral g-forces. A second-generation Electronically Controlled Suspension allows our widest range of suspension settings ever. Tune it for extreme track situations. Or for that next family road trip.

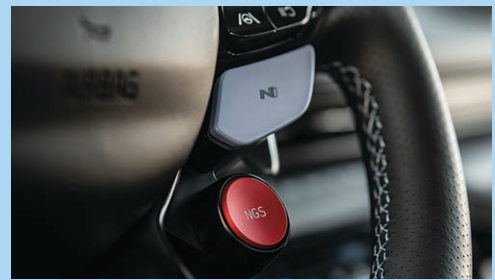


Electronically Controlled Suspension and N Corner Carving Differential

NEVER JUST DRIVE 



19" forged wheels and 14.2" front brake rotors



N Power Shift and N Grin Shift



Dual 10.25" LCD screens and N Light Sport Bucket Seats

<sup>1</sup>Always use extreme caution when using the N Grin Shift feature. The driver is responsible for being attentive and maintaining control of the vehicle at all times. See Owner's Manual for further details and limitations.

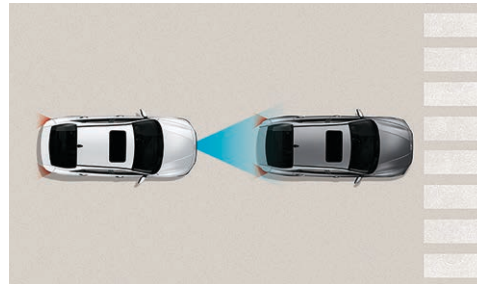


# SmartSense is safety at its most intelligent.

With all of the advanced safety systems it carries onboard, Elantra is on guard every time you get in, fasten your seatbelt and head out on the road. Hyundai SmartSense, our suite of innovative driver alert and assist technologies, offers 360 degrees of protection – scanning for potential hazards at the front, rear and sides of your Elantra.<sup>1</sup>

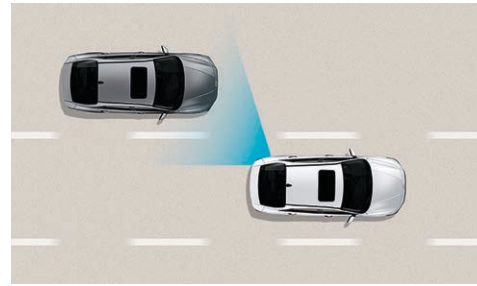
For 2024, the long list of standard safety features now includes the use of haptic feedback – that pulsing vibration in the steering wheel<sup>2</sup> – that alerts the driver whenever Lane Keeping Assist,<sup>3</sup> Blind-Spot Collision Warning<sup>4</sup> or Rear Cross-Traffic Collision-Avoidance Assist<sup>5</sup> are triggered. Also new this year: Rear side airbags, which come standard on every Elantra model. Parking? Elantra Limited's Surround View Monitor helps take the stress out of chaotic parking lots.<sup>6</sup>

## Hyundai SmartSense Technologies



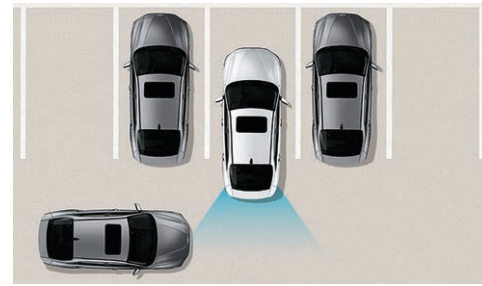
### 1. Forward Collision-Avoidance Assist

When the front-facing camera or available radar detects a vehicle or pedestrian in your path, or oncoming cars when turning left in an intersection, your Elantra warns you of a potential collision. If necessary, the system will automatically apply emergency braking to help avoid a collision.<sup>7</sup>



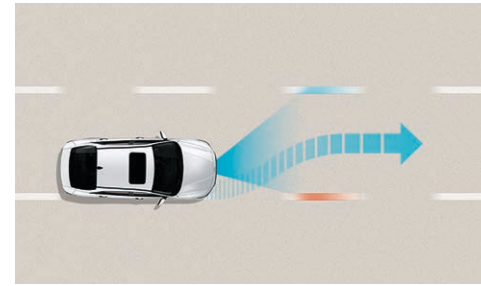
### 2. Blind-Spot Collision Warning

If your Elantra detects a vehicle in your blind spot while the turn signal is on, it issues an alert before you change lanes to help avoid a collision. It also monitors for vehicles approaching from behind to help prevent collisions when you are exiting a parallel parking spot.



### 3. Rear Cross-Traffic Collision-Avoidance Assist

Backing out of a parking space and wondering whether there's cross traffic coming your way? This feature warns you if another vehicle is detected to be approaching from the side. If necessary, your Elantra automatically applies braking to help prevent a collision.



### 4. Lane Following Assist

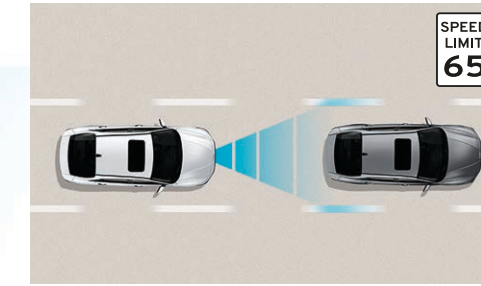
Using the front-facing camera to detect lane markers on the road, this feature assists the Elantra driver's steering to help keep the vehicle centered in its lane. Elantra can also determine a virtual path to help keep you positioned in your driving lane based on the movements of the vehicle in front of you.<sup>8</sup>



Blind-Spot View Monitor

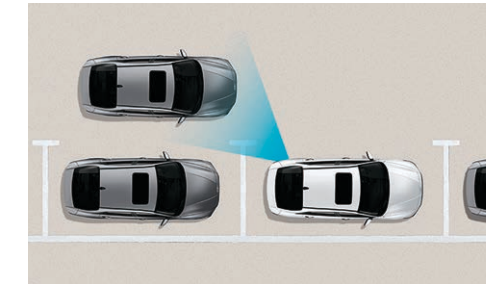


Surround View Monitor



### 5. Highway Driving Assist

Acting as your copilot on highways, this feature helps keep you centered in your lane while also maintaining a set speed and distance from the vehicle in front. It uses Elantra's navigation map data to automatically adjust for changing speed limits and reduces your speed when it detects you're approaching a curve in the road.<sup>9</sup>



### 6. Safe Exit Warning

After parking your Elantra, a Safe Exit Warning feature issues an alert when a vehicle is detected to be approaching from behind, letting the driver know it may not be safe for passengers to open their street-side door.<sup>10</sup>

<sup>1</sup>Safety features vary by model and trim level. For details, refer to the Features chart in this brochure or visit HyundaiUSA.com. <sup>2</sup>Haptic feedback not equipped on Elantra N and N Line. <sup>3</sup>Lane Keeping Assist operates only when the lane markings are clearly visible on the road. It will not work under all circumstances and will not prevent loss of control. It is a supplemental assist and does not replace the need for extreme care and attention by the driver. It uses a camera in the upper windshield area, so it is imperative this area be free of blockage such as stickers, dirt, snow, tinting material, markings and labels. Avoid putting objects on the dashboard that may reflect light or images onto the system camera area. See Owner's Manual for details and limitations. <sup>4</sup>Blind-Spot Collision Warning (BCW) assists the driver by warning of other vehicles in the blind-spot region. There are limitations to the function, range, detection and clarity of the system. It will not detect all vehicles or objects in the blind spot. Its operation depends on the size, distance, angle and relative speed difference between your car and other vehicles. BCW may not operate if sensors are obscured in any way. BCW is a supplemental system and the driver must still be attentive and exercise caution when driving. It is the driver's responsibility to be aware of the surroundings and ensure it is clear before changing lanes or directions. See Owner's Manual for details and limitations. <sup>5</sup>Rear Cross-Traffic Collision-Avoidance Assist (RCCA) is designed to notify drivers of approaching cross traffic behind their vehicle. When another vehicle is detected while you are backing out of a parking spot, it provides audible and visual display warnings and applies braking if it senses a collision is imminent. RCCA is active when the vehicle is in reverse gear and backing at a speed less than 6 mph. It only engages during the first activation of reverse gear from park and may not detect all vehicles, depending on the size, angle, distance and speed of the other vehicle. Never rely exclusively on RCCA. Always look over your shoulder and use your mirrors to confirm rear clearance. There are limitations to the function, detection, range and clarity of the system. See Owner's Manual for details and limitations. <sup>6</sup>The Surround View Monitor is a parking support system. It cannot completely eliminate blind spots, may not detect every object and does not warn of moving objects. Always check your surroundings before moving your vehicle. See Owner's Manual for details and limitations. <sup>7</sup>Forward Collision-

Avoidance Assist with Junction Turning is intended to be a supplement to safe driving practices. The system is not designed to detect certain stationary objects such as trees or poles, and may not detect all vehicles, pedestrians or cyclists under certain conditions. The system's available Junction Turning function operates when the vehicle's left turn signal is activated, the vehicle is traveling between approximately 6-19 mph and the oncoming vehicle's speed is between approximately 19-44 mph. The system is a driver assistance system and is not a substitute for safe driving. The driver is responsible for being attentive and maintaining control of the vehicle, and should not wait for the system's alerts before braking as there may not be sufficient time to brake safely. See Owner's Manual for details and limitations. <sup>8</sup>Lane Following Assist (LFA), when actively engaged with Smart Cruise Control or Highway Driving Assist, helps keep your vehicle centered in its lane when the lane markings are clearly visible on the road. LFA will not work under all circumstances and will not prevent loss of control. LFA is a supplemental assist, and does not replace the need for extreme care and attention by the driver. See Owner's Manual for details and limitations. <sup>9</sup>Highway Driving Assist (HDA) is for highway use only and can help maintain a safe distance from the vehicle ahead while keeping your vehicle centered in its lane when lane markings are clearly visible on the road. HDA should not be used in poor weather, heavy or varying traffic, or on winding or slippery roads. HDA will not work under all circumstances and will not prevent loss of control. Driver remains responsible to slow or stop the vehicle to avoid a collision. See Owner's Manual for details and limitations. <sup>10</sup>When the vehicle is parked, Safe Exit Warning (SEW) can alert occupants planning to exit the vehicle when another vehicle is approaching from behind. SEW does not work in all situations and is not a substitute for driver or passenger attentiveness. Always be aware of your surroundings and attentive of approaching vehicles. See Owner's Manual for details and limitations.





## It's a high-performance interior.

Inside the 2024 Elantra, a new interior reflects its performance car personality. The dash is low and wide, wrapping around the driver to present the segment's first fully digital 10.25" LCD instrument cluster and largest 10.25" navigation/infotainment screen.<sup>1</sup> Integrated under a single cover of glass, the screen tilts toward the driver for improved visibility.

Now check out the back seat. That's best-in-class rear-seat legroom<sup>2</sup> with available 60/40 split-folding rear seats. But how comfortable you are is about more than room. It's about whether what's inside actually makes life easier. With Elantra's available Dynamic Voice Recognition, for example, you simply use your conversational voice to adjust climate controls, select SiriusXM<sup>®</sup> channels and more.<sup>3</sup>

Need to power your devices? Dual front and rear USB ports are standard. And there's Elantra's next-gen wireless phone charger, with a new charging light indicator and a separator rail to keep your phone securely in place.<sup>4</sup> Better yet, it features a 30% improvement in performance, and a cooling function that helps prevent overheating.

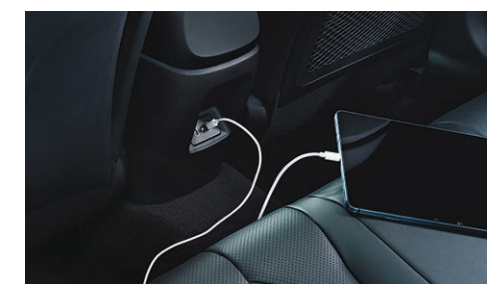
To keep you and your crew at the right temperature, you can pre-warm or pre-cool the cabin using your MyHyundai with Bluelink app.<sup>5</sup> And you can set the air conditioning's auto mode at any of three levels of airflow for your preferred intensity. Other available features ready to perform: A Wi-Fi Hotspot,<sup>6</sup> a power sunroof and an 8-speaker Bose<sup>®</sup> premium audio system.



10.25" touchscreen display with Apple CarPlay<sup>®</sup>



Wireless phone charger and dual USB ports



Dual rear USB ports



Best-in-class rear legroom



Hands-free smart trunk release

<sup>1</sup> Not equipped on Elantra SE. <sup>2</sup> Class comparison based on compact sedan competitors as defined by Hyundai Motor America. Claim based on comparison of specifications on manufacturer websites. <sup>3</sup> Speak in a normal voice and minimize background noise for best results. See Owner's Manual for details and limitations. All SiriusXM services require a subscription sold separately, or as a package, by Sirius XM Radio Inc. after a 3-month trial period. The subscription plan you choose will automatically renew, and you will be charged according to your chosen payment method at then-current rates. Fees and taxes apply. To cancel, you must call SiriusXM at 1-866-635-2349. See SiriusXM Customer Agreement for complete terms at siriusxm.com. All fees and programming subject to change. Sirius XM, SiriusXM and all related marks and logos are trademarks of Sirius XM Radio Inc. <sup>4</sup> Qi wireless charging function is based on smartphone compatibility and/or specific accessory cases. <sup>5</sup> Not available on Elantra SE. Requires active Bluelink Advanced subscription (complimentary for the original owner). Remote climate control available on properly equipped models with fully automatic temperature control. <sup>6</sup> Requires active data plan from Verizon and acceptance of Hyundai Motor America Connected Services Terms and Conditions. Coverage and service are not available in all areas. Wi-Fi hotspot is intended for passenger use only. Only use Wi-Fi and connected devices when safe to do so. For terms and conditions, see [www.verizon.com/plans/connected-car](http://www.verizon.com/plans/connected-car).





# Introducing Bluelink+: No fees. No trial. No worries.

With the introduction of Bluelink+, Hyundai becomes the first automotive brand to offer its suite of connected car features to new car purchasers at no extra cost. Bluelink+ is complimentary with the purchase of your new 2024 Elantra.<sup>1</sup>

Bluelink features technologies that help keep you safe – from automatic collision notifications and automatic emergency assistance if your airbags deploy to enhanced roadside assistance that sends your exact location to a roadside assistance associate.<sup>2</sup> Bluelink also includes helpful maintenance features like remote diagnostics and monthly vehicle health reports. All complimentary with a 2024 Hyundai new vehicle purchase for the life of the supporting wireless network technology.<sup>3</sup>

Your MyHyundai with Bluelink app turns your compatible smartphone, smartwatch or smart home assistant device into a Bluelink remote control that can unlock your Elantra's doors and start the engine and climate controls before you walk out the door.<sup>4</sup>

Starting your Elantra remotely, or with the available Digital Key 2, restores your radio and navigation system presets using your Bluelink personal profile.<sup>5</sup> Apple Wallet,<sup>®</sup> Google Wallet<sup>®</sup> and Samsung Pass<sup>®</sup> let you share your digital key with trusted friends and family members<sup>6</sup> – as the primary driver, you can control when a shared key can be used, and pause or end shared-key access at any time.



Digital Key 2



### Automatic Emergency Assistance

Bluelink Connected Care offers 24/7 SOS Emergency Assistance as well as Automatic Collision Notification that calls for help if you're in an accident where your vehicle's airbags deploy.



### Destination Send-to-Car

Use your smartphone to find restaurants or points of interest, then send the destination to your Elantra's available navigation system for driving directions before you slip behind the wheel.



### Remote Vehicle Status

Wondering how much fuel is in your car's tank? If your Elantra's trunk is closed or the doors are unlocked? Your MyHyundai app knows the answers to these questions and more.



### On-Demand Diagnostics

Run vehicle diagnostics from your MyHyundai mobile app, report issues at the press of a button and receive maintenance reminders or Monthly Vehicle Health Reports by email.



### Remote Vehicle Controls

Use your smartphone, virtual assistant or wearable device to remotely start your Elantra's engine, unlock the doors, set the cabin temperature and more.



### Hyundai Car Finder

Our Bluelink Car Finder app helps you navigate crowded city streets and parking lot mazes when finding your way back to your Elantra.

<sup>1</sup>Not available on Elantra SE. Bluelink+ is available to purchasers and lessees of new 2024 and newer Bluelink-equipped Hyundai models. Bluelink+ requires an active Bluelink subscription agreement subject to the Connected Services Terms and Conditions. Only use Bluelink features and corresponding devices when safe to do so. Cellular and GPS coverage is required. Fees apply for map and multimedia over-the-air (OTA) updates after an initial three-year period of complimentary updates. Three-year term starts from the new vehicle date of first use. Features, specifications and fees are subject to change. <sup>2</sup>Bluelink agents will contact existing emergency service responders. <sup>3</sup>Bluelink services rely on digital wireless telecommunications technology outside of Hyundai's control. Bluelink is dependent on 4G LTE cellular networks controlled and maintained by third-party wireless carriers. If and when these networks change and/or discontinue service, or the underlying technology required to support Bluelink becomes obsolete, then the connected services will not work, and Hyundai will be forced to cancel impacted subscription services. <sup>4</sup>Requires active Bluelink Advanced subscription (complimentary for the original owner). Remote climate control available on properly equipped models with fully automatic temperature control. Remote stop only available when in remote start mode. <sup>5</sup>Near Field Communication (NFC) digital key requires a compatible iPhone,<sup>®</sup> Apple Watch,<sup>®</sup> Google Pixel,<sup>®</sup> or Samsung Galaxy<sup>®</sup> phone. Not all Android, Apple or Samsung devices are compatible. Digital key sharing requires an active Bluelink Advanced subscription (complimentary for the original owner). See your Owner's Manual for details and limitations. <sup>6</sup>Apple<sup>®</sup> is a registered trademark of Apple Inc. Samsung<sup>®</sup> is a registered trademark of Samsung Electronics Inc. Google<sup>®</sup> is a trademark of Google LLC.



## ELANTRA SE

2.0L MPI Atkinson Cycle 4-cylinder engine

147 HP

132 LB-FT



Popular Features	
Forward Collision-Avoidance Assist with Pedestrian Detection	
Lane Keeping Assist and Lane Following Assist	
Blind-Spot Collision Warning	
Rear Cross-Traffic Collision-Avoidance Assist	
Intelligent Speed Limit Assist	
Dual LED projector-type headlights with High Beam Assist	
Wireless Android Auto™ and Apple CarPlay®	
8.0" Display Audio	
Dual front and rear USB ports	

Exterior / Interior Dimensions	ELANTRA / HYBRID	ELANTRA N
Wheelbase	107.1 in	←
Overall Length	185.4 in	←
Overall Width	71.9 in	←
Overall Height	55.7 in	←
Overall Height – N Line	55.9 in	–
Headroom – front (with sunroof) / rear	40.6 (38.7) / 37.3 in	←
Legroom – front / rear	42.3 / 38.0 in	←
Shoulder Room – front / rear	56.5 / 55.6 in	←
Passenger Volume	99.4 in	←
Cargo (Trunk) Volume	14.2 in	←
Total Interior Volume	113.6 in	←

## Wheels

15" Alloy Wheel  
ELANTRA SE



16" Alloy Wheel  
ELANTRA SEL  
HYBRID Blue



17" Alloy Wheel  
ELANTRA SEL  
Convenience & Limited  
HYBRID Limited



18" Alloy Wheel  
ELANTRA N Line



19" Forged Alloy Wheel  
ELANTRA N



## ELANTRA SEL

2.0L MPI Atkinson Cycle 4-cylinder engine

147 HP

132 LB-FT



Popular Features	
Proximity Key with push button start	
Dual automatic temperature control	
10.25" digital instrument cluster	
10.25" navigation system	
Driver's auto-up window	
Hands-free smart trunk release	
Bluelink+ Connected Car System	
SiriusXM® Satellite Radio	
Wi-Fi hotspot	

### SEL Convenience Package

Dynamic Voice Recognition
Power tilt-and-slide sunroof
Forward Collision-Avoidance Assist with Pedestrian/Cyclist Detection and Junction-Turning Detection
60/40 split-folding rear seats with armrest and cupholder
Smart Cruise Control with Stop & Go
Electronic Parking Brake
Leather-wrapped steering wheel and shift knob
Wireless phone charger
Heated front seats
Heated side mirrors
17" alloy wheels

## ELANTRA N Line

1.6L Turbo GDI 4-cylinder engine

201 HP

195 LB-FT



Popular Features	
N Line unique front and rear fascia	
Chrome-tipped dual exhaust outlet	
Black leatherette/cloth sport seats with red stitching	
Aluminum sport pedals and black headliner	
Bose® premium audio with 8 speakers	
Larger 12" front brake rotors and multi-link rear suspension	

## ELANTRA Limited

2.0L MPI Atkinson Cycle 4-cylinder engine

147 HP

132 LB-FT



Popular Features	
Digital Key 2	
Blind-Spot View Monitor and Surround View Monitor	
H-Tex® seating surfaces	
Wireless phone charger	
Highway Driving Assist	
Parking Collision-Avoidance Assist – Reverse	
Parking Distance Warning – Forward/Reverse	

## ELANTRA Hybrid Blue

1.6L GDI 4-cylinder hybrid engine

139 NET HP

195 LB-FT



Popular Features	
54 Combined MPG	
Dual LED projector-type headlights with High Beam Assist	
10.25" digital instrument cluster	
10.25" navigation system	
Dual automatic temperature control	
Dual front and rear USB ports	

## ELANTRA Hybrid Limited

1.6L GDI 4-cylinder hybrid engine

139 NET HP

195 LB-FT



Popular Features	
Digital Key 2	
Wireless phone charger	
H-Tex® trimmed seats	
Highway Driving Assist	
Bose® premium audio with 8 speakers	
Parking Distance Warning – Forward/Reverse	

## ELANTRA N

2.0L Turbo GDI 4-cylinder engine

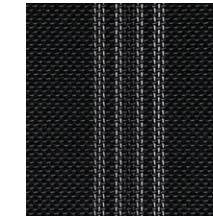
276 HP

289 LB-FT

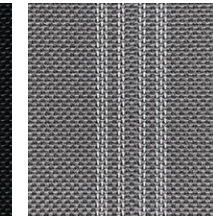


Popular Features	
Customizable digital instrument cluster	
N Light Sport bucket seats with illuminated N logo	
N Grin Control System drive modes	
N-specific body styling and rear underbody air diffuser	
Rear wing spoiler	
Large-bore dual exhaust outlets	

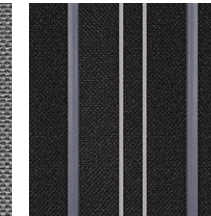
## Interior Colors



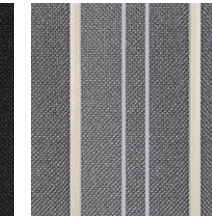
Black Cloth SE



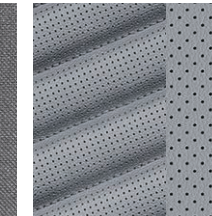
Gray Cloth SE



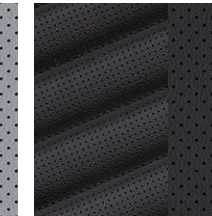
Black Cloth SEL / Blue



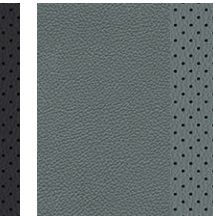
Gray Cloth SEL / Blue



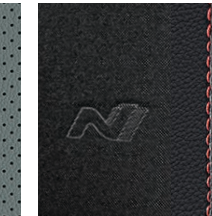
Light Gray H-Tex® Limited / Limited



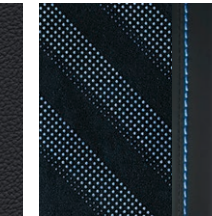
Black H-Tex® Limited / Limited



Sage Gray H-Tex® Limited



Black Leatherette / Cloth Sport Seats with Red Stitching N Line

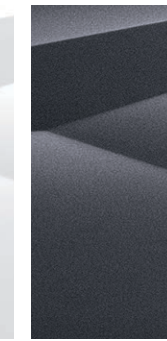


Black Leather / Alcantara Seats with Blue Stitching Elantra N

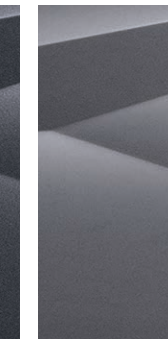
## Exterior Colors



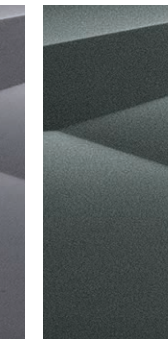
Serenity White



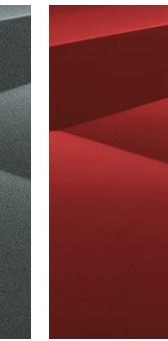
Ecotronic Gray



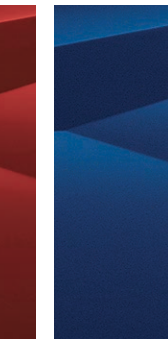
Fluid Metal



Amazon Gray



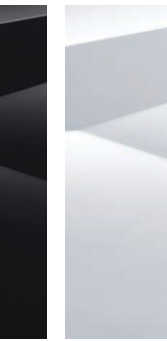
Ultimate Red



Intense Blue



Abyss Black



Atlas White N Line / Elantra N



Exotic Green N Line



Performance Blue Elantra N



Cyber Gray Elantra N



## ELANTRA | ELANTRA Hybrid

Power & Handling	SE	SEL	N Line	Ltd	Blue	Ltd
147 hp/132 lb-ft, 2.0L Atkinson Cycle 4-cylinder engine	●	●	–	●	–	–
201 hp/195 lb-ft, 1.6L Turbo GDI 4-cylinder engine	–	–	●	–	–	–
139 net hp, 1.6L GDI Atkinson Cycle 4-cylinder hybrid engine with 32 kW permanent magnet high-power density motor	–	–	–	–	●	●
Smartstream Intelligent Variable Transmission (IVT)	●	●	–	●	–	–
7-speed Dual Clutch Transmission (DCT) with SHIFTRONIC® paddle shifters	–	–	●	–	–	–
6-speed EcoShift® Dual Clutch Transmission (DCT)	–	–	–	–	●	●
Electronic Parking Brake	–	●	–	●	●	●
Drive Mode Select	●	●	●	●	●	●
Multi-link rear suspension	–	–	●	–	●	●
Larger 12" front brake rotors	–	–	●	–	–	–
4-wheel disc brakes	●	●	●	●	●	●
Exterior Features	SE	SEL	N Line	Ltd	Blue	Ltd
Black grille	●	●	–	●	●	●
N Line gloss black grille / N Line unique front & rear fascia	–	–	●	–	–	–
Chrome-tipped dual exhaust outlet	–	–	●	–	–	–
Solar control glass	●	●	●	●	●	●
Automatic headlights and LED Daytime Running Lights	●	●	●	●	●	●
High Beam Assist	●	●	●	●	●	●
Dual LED projector-type headlights	●	●	●	●	●	●
LED/bulb combination taillights	–	–	●	●	–	●
Heated side mirrors	–	●	●	●	●	●
Side mirrors with turn signal indicators	–	–	●	●	–	●
Rearview camera	●	●	●	●	●	●
Power tilt-and-slide sunroof	–	●	●	●	–	●
Hands-free smart trunk release	–	●	●	●	●	●
Interior & Convenience Features	SE	SEL	N Line	Ltd	Blue	Ltd
Proximity Key with push button start	–	●	●	●	●	●
4.2" color LCD multi-information cluster display	●	–	–	–	–	–
10.25" digital instrument cluster	–	●	●	●	●	●
Tilt-and-telescopic steering wheel with audio, phone and cruise controls	●	●	●	●	●	●
Dual automatic temperature control	–	●	●	●	●	●
Cruise control	●	●	●	–	●	–
Smart Cruise Control with Stop & Go	–	●	–	●	–	●
Leather-wrapped steering wheel and shift knob	–	●	●	●	–	●
Heated front seats	–	●	●	●	●	●

Interior & Convenience Features	SE	SEL	N Line	Ltd	Blue	Ltd
Ventilated front seats	–	–	–	–	–	●
Integrated Memory System for driver's seat and side mirrors	–	–	–	–	–	●
6-way adjustable driver seat including height adjustment	●	●	–	–	●	–
Power driver seat with power lumbar support	–	–	●	●	–	●
Cloth seating surfaces	●	●	–	–	●	–
H-Tex® seating surfaces	–	–	–	●	–	●
Black leatherette/cloth sport seats with red stitching	–	–	●	–	–	–
Aluminum sport pedals and black headliner	–	–	●	–	–	–
60/40 split-folding rear seats with armrest and cupholders	–	●	●	●	–	●
Sunvisors with illuminated vanity mirror and extension	–	●	●	●	●	●
Auto-dimming rearview mirror	–	–	–	●	–	●
Ambient LED interior lighting (adjustable – 64 colors)	–	–	–	●	–	●
Advanced Safety	SE	SEL	N Line	Ltd	Blue	Ltd
Forward Collision-Avoidance Assist with Pedestrian Detection	●	●	●	–	●	–
Forward Collision-Avoidance Assist with Pedestrian/Cyclist Detection and Junction Turning Detection	–	●	–	●	–	●
Lane Keeping Assist and Lane Following Assist	●	●	●	●	●	●
Driver Attention Warning / Rear Occupant Alert / Safe Exit Warning	●	●	●	●	●	●
Blind-Spot Collision Warning	●	●	●	●	●	●
Rear Cross-Traffic Collision-Avoidance Assist	●	●	●	●	●	●
Intelligent Speed Limit Assist	●	●	●	●	●	●
Highway Driving Assist	–	–	–	●	–	●
Blind-Spot View Monitor and Surround View Monitor	–	–	–	●	–	–
Parking Distance Warning – Forward/Reverse	–	–	–	●	–	●
Parking Collision-Avoidance Assist – Reverse	–	–	–	●	–	–
Audio & Connected Car Technology	SE	SEL	N Line	Ltd	Blue	Ltd
8.0" Display Audio	●	–	–	–	–	–
10.25" navigation system	–	●	●	●	●	●
SiriusXM® Satellite Radio	–	●	●	●	●	●
Android Auto™ and Apple CarPlay®	●	●	●	●	●	●
Bose® premium audio with 8 speakers	–	–	●	●	–	●
Dynamic Voice Recognition	–	●	●	●	–	●
Wireless phone charger	–	●	●	●	–	●
Wi-Fi hotspot (requires active data plan subscription)	–	●	●	●	●	●
Digital Key 2	–	–	●	●	–	●
Bluelink+ Connected Car System	–	●	●	●	●	●
USB ports: Front (1 data/charge + 1 charge), Rear (2 charge)	●	●	●	●	●	●

● Standard – Not Available ● SEL Convenience Package Ltd = Limited Trim

## ELANTRA N

Power & Handling	N
276 hp/289 lb-ft, 2.0L Turbo GDI "Flat Power" 4-cylinder engine	●
6-speed manual transmission with downshift rev matching	●
N 8-speed Wet Dual Clutch Transmission (DCT) with paddle shifters	○
N Grin Control System – Drive Mode Select	●
Launch Control	●
N Grin Shift (DCT only)	○
N Power Shift (DCT only)	○
N Corner Carving Differential	●
Rack-mounted Motor-driven Power Steering	●
14.2" front and 12.4" rear ventilated brake rotors	●
Electronically Controlled Suspension	●
MacPherson strut front and multi-link rear suspension	●
Rear chassis brace	●
Exterior Features	N
LED headlights	●
LED taillights	●
High Beam Assist	●
LED Daytime Running Lights	●
N logo matte-black front grille	●
N-specific body styling and rear underbody air diffuser	●
Large-bore dual exhaust outlets	●
Heated side mirrors with turn signal indicators	●
Rear wing spoiler	●
Power tilt-and-slide sunroof	○
Hands-free smart trunk release	●
19" MICHELIN® Pilot Sport 4S summer performance tires	●
Interior & Convenience Features	N
Proximity Key with push button start	●
10.25" digital instrument cluster	●
N-exclusive leather-wrapped steering wheel and shift knob	●
Tilt-and-telescopic steering wheel with audio, phone and cruise controls	●
Dual automatic temperature control	●
6-way adjustable driver and front passenger seats with illuminated "N" logo	●
N Light Sport bucket seats trimmed in black leather with microsuede inserts	●
Heated front seats	●
Alloy sport pedals and door sill plates	●
N Sound Equalizer	●
Rearview camera	●

Advanced Safety	N
Forward Collision-Avoidance Assist with Pedestrian Detection	●
Lane Keeping Assist and Lane Following Assist	●
Driver Attention Warning	●
Blind-Spot Collision Warning	●
Rear Cross-Traffic Collision-Avoidance Assist	●
Parking Distance Warning – Forward/Reverse	●
Audio & Connected Car Technology	N
10.25" navigation system	●
SiriusXM® Satellite Radio	●
Android Auto™ and Apple CarPlay®	●
Bose® premium audio with 8 speakers	●
Wireless phone charger	●
Digital Key 2	●
Bluelink+ Connected Car System	●
USB ports: Front (1 data/charge + 1 charge), Rear (2 charge)	●

● Standard ○ Optional

ELANTRA  
EPA MPG Estimates (City/Highway/Combined)



32/41/36 MPG | SE Smartstream IVT 28/35/31 MPG | N Line 7-speed automatic DCT

31/40/34 MPG | SEL /Limited Smartstream IVT

ELANTRA Hybrid  
EPA MPG Estimates (City/Highway/Combined)



51/58/54 MPG | Blue 6-speed automatic DCT 49/52/50 MPG | Limited 6-speed automatic DCT

ELANTRA N  
EPA MPG Estimates (City/Highway/Combined)



21/29/24 MPG | 6-speed manual transmission 20/27/23 MPG | N 8-speed Wet Dual Clutch Transmission

EPA estimates for comparison only. Actual mileage varies with vehicle conditions/options and driving conditions/habits.





## Hope comes standard on every Hyundai.

Each time we sell a Hyundai, a portion goes to Hyundai Hope On Wheels® to help find a cure for childhood cancer. Over the last 25 years, Hyundai Hope On Wheels has donated \$225 million to pediatric cancer research. Hope is our greatest feature. And it comes standard on every Hyundai. For more information, please visit [HyundaiHopeOnWheels.org](http://HyundaiHopeOnWheels.org).



## America's Best Warranty

**POWERTRAIN LIMITED WARRANTY**

**10** YEARS  
100,000 MILES

**NEW VEHICLE LIMITED WARRANTY**

**5** YEARS  
60,000 MILES

**ANTI-PERFORATION WARRANTY**

**7** YEARS  
UNLIMITED MILES

**24/7 ROADSIDE ASSISTANCE**

**5** YEARS  
UNLIMITED MILES

**HYBRID/EV DIRECT ENERGY COMPONENTS**

**10** YEARS  
100,000 MILES



### Hyundai Complimentary Maintenance

Complimentary maintenance includes Hyundai-approved oil and oil filter change (except for electric vehicles and fuel cell electric vehicles) plus tire rotation at normal factory-scheduled maintenance intervals for 3 years or 36,000 miles, whichever comes first. More frequent maintenance due to severe driving or conditions excluded. Offer valid only for new 2020-2024 Hyundai models purchased or leased on or after February 1, 2020. See your Hyundai dealer for further details and limitations.



### Owner Assurance

Our commitment to Hyundai owners does not end with the transfer of keys. Wherever the road takes you, we have got your back with Hyundai Owner Assurance, an umbrella of services and benefits that includes America's Best Warranty, 24/7 Roadside Assistance, innovative safety and car care features...and more.

While the content contained in this brochure is based on the latest information available at the time of printing, specifications and equipment can change. Feature comparisons are based on competitor information available at the time of printing. Although the information is believed to be correct, accuracy cannot be guaranteed. No warranty or guarantee is being extended in this brochure, and Hyundai reserves the right to change product specifications and equipment at any time, without notice, without incurring obligations. Some vehicles are shown with optional equipment. Specifications apply to U.S. vehicles only. Please contact your Hyundai dealer or visit [HyundaiUSA.com](http://HyundaiUSA.com) for current vehicle specifications or details on any of the programs or services listed here. As part of Hyundai's commitment to a responsible environment, this brochure was printed using paper certified by the Forest Stewardship Council®. FSC® certification helps ensure that the highest social and environmental standards are met in the making of the paper we use, contributing to conservation, responsible management and community-level benefits for people near the forests.



©2024 HYUNDAI NP02082024