



TOYOTA

2024 Mirai

2024 MIRAI

Zero-emission elegance.

The 2024 Toyota Mirai's sleek design is as innovative as its engineering. Its aerodynamic stance and premium rear-wheel-drive platform consistently deliver an exciting ride, and inside, Mirai's spacious cabin seats five comfortably. Best of all, Mirai just needs around five minutes at the hydrogen pump to refuel¹ and you're ready to hit the road.



See numbered footnotes in Disclosures section.



OWNER BENEFITS

Looking out for you.

Mirai comes equipped with a comprehensive Owner Experience Program offering world-class services.

Extended ToyotaCare coverage

More ToyotaCare, more peace of mind. Enjoy our factory-scheduled maintenance plan, included for three years or 35,000 miles, whichever comes first, and enhanced Roadside Assistance for three years, regardless of mileage.⁴

FCEV Warranty

Every new Mirai has an 8-year/100,000-mile Fuel Cell Electric Vehicle (FCEV) warranty on key Fuel Cell Electric Vehicle components⁵ and a 10-year/150,000-mile hybrid battery warranty.⁶

HOV carpool sticker

Enjoy life in the fast lane. Mirai may be eligible for an HOV carpool sticker.⁷

Flexible rental

For the first three years of ownership, Mirai's complimentary 21-day Rental Experience gives you flexibility when you need it most.⁸

Complimentary fuel

Mirai comes with up to \$15,000 or 6 years' worth of complimentary fuel for purchases and up to \$15,000 or 3 years' worth of complimentary fuel for leases,⁹ whichever comes first.

24/7 call support

Around-the-clock help when you need it most. Every Mirai comes with 24/7 Customer Call Support for the duration of ownership.

High-tech. Highly convenient.

Mirai's advanced tech helps you feel more connected and in control on every drive.



Limited interior shown in White SofTex^{®3} trim.
Always drive safely and obey traffic laws.



Digital Rearview Mirror with HomeLink[®]

Connected to a camera on the trunk, Mirai's available digital rearview mirror with HomeLink^{®10} can cast an obstruction-free view. You can zoom in, zoom out and adjust the mirror to get a better look at what's behind you.

Color Head-Up Display

With your hands on the steering wheel and your eyes on the road, Mirai's available color Head-Up Display (HUD) casts your speed, turn-by-turn directions, and Hybrid System Indicator info right into your line of sight.

Panoramic View Monitor

Mirai's available Panoramic View Monitor¹¹ (PVM) helps you check your surroundings for hazards. It uses four cameras, one on each side of the vehicle, to display a panoramic view onto the touchscreen display. When you're parked and using the Moving View setting, Mirai creates an animated virtual view from above to give you a bigger picture of what's around.



Limited interior shown in White SofTex^{®3} trim.¹¹

EXTERIOR

Sophistication at first sight.

Mirai's low, wide and long stance gives this hydrogen fuel cell vehicle a look that's as cutting-edge as its engineering. And premium aluminum alloy wheels elegantly accent Mirai's sleek and modern shape.



LED taillights

Mirai's taillight design is nothing short of iconic. Made up of energy-efficient and durable LED bulbs, these taillights shine bright for enhanced road safety at night.

Wheel design

Aluminum alloy wheels accentuate Mirai's modern look. XLE comes standard with 19-in. twin spoke wheels, while available 20-in. Super Chrome-finished wheels pack an extra punch. And Limited comes standard with 19-in. black machined-finished wheels.



PERFORMANCE

Powered by chemistry.

Mirai generates its power by funneling hydrogen from the fuel tank and oxygen entering the intake grille to the Fuel Cell Stack, where the elements react to create electricity. In the end, the only by-product is water.

Three hydrogen tanks

Mirai features three hydrogen tanks. These high-pressure carbon-fiber-reinforced-polymer tanks have been rigorously tested and proven to meet Global Technical Regulation No.13.¹³



How do I fill up Mirai?

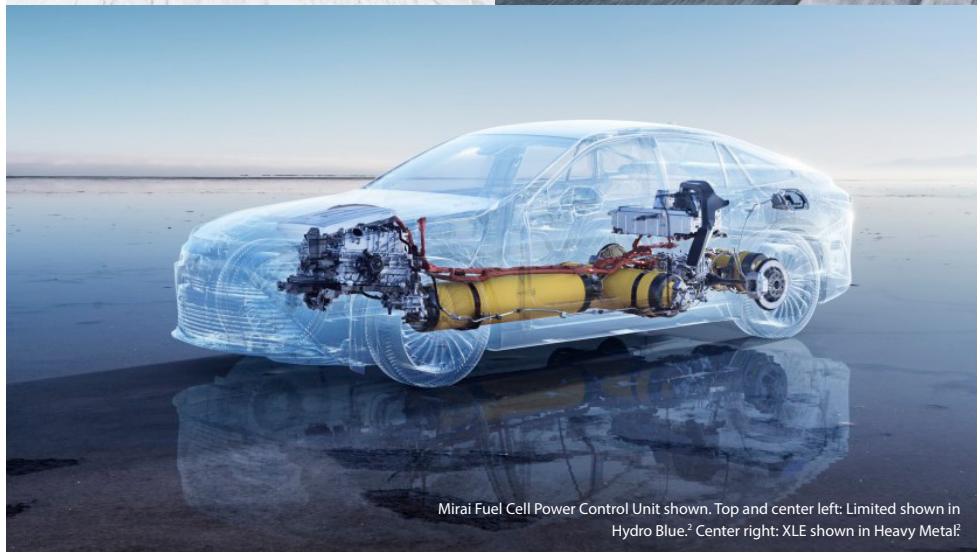
Refueling Mirai is simple. There's a pump and a nozzle, just like at a gasoline station. As you pump in the hydrogen, it travels to carbon-fiber-reinforced fuel tanks where it's stored. After around five minutes,¹ you'll be ready to hit the road.

Up to EPA-estimated 402-mile range

With impressive EPA-estimated ranges of 402 miles for Mirai XLE¹² and 357 miles for Mirai Limited,¹² you can spend less time refueling and more time cruising.

Rear-Wheel Drive and drive modes

Enhancing both cornering and acceleration, Mirai's premium rear-wheel-drive platform is engineered to make you want to take the long way home. And with three driving modes: ECO, Normal and Sport, Mirai lets you alter driving dynamics at the push of a button.



Mirai Fuel Cell Power Control Unit shown. Top and center left: Limited shown in Hydro Blue.² Center right: XLE shown in Heavy Metal.³

See numbered footnotes in Disclosures section.

INTERIOR

A refined retreat.

Mirai's craftsmanship is on display with every detail.



Interior design

Premium touches, like available perforated and embossed SofTex®-trimmed³ seating, highlight Mirai's refined interior. And, with available satin silver-colored or copper-colored accents, everyone inside can see this interior was put together with purpose — right down to the last stitch.



Three-zone automatic climate control

Little innovations can make a big difference. With Mirai's available three-zone automatic climate control, driver and passengers can set their temperature in one of three zones: driver's side, passenger side, and rear.



Heated and ventilated seats

Mirai's available heated and ventilated front and rear seats help keep everyone comfortable — no matter the season.



Dual fixed Panoramic View Moonroof

Above the front and rear seats, Mirai's available dual fixed Panoramic View Moonroof makes the cabin feel even more spacious. It lets the sunshine in while making every ride more scenic.

Technology that keeps up with you.

Take advantage of smarter and convenient technologies designed to simplify your everyday life. Trial periods included for the listed connected technologies.* ¹⁴4G network dependent.



Safety Connect®

Round-the-clock help when the unexpected happens¹⁵

- ✓ Emergency Assistance Button (SOS)
- ✓ Enhanced Roadside Assistance¹⁶
- ✓ Automatic Collision Notification
- ✓ Stolen Vehicle Locator¹⁷



Service Connect

Being proactive to help keep your vehicle in peak condition!⁸

- ✓ Vehicle Health Report
- ✓ Vehicle Maintenance Alert
- ✓ Maintenance Reminder

*To view included trial details, please visit toyota.com/connected-services.



Wi-Fi Connect

Turn your Toyota into a hotspot with 4G connectivity.¹⁹

- ✓ AT&T Hotspot
- ✓ Integrated Streaming
 - Apple Music²⁰ (separate subscription required)
 - Amazon Music²¹ (separate subscription required)



Drive Connect

Enhanced features to get you where you need to be²²

- ✓ Destination Assist²³
- ✓ Intelligent Assistant²⁴
- ✓ Cloud Navigation²⁵



Remote Connect

Manage your vehicle, through the Toyota app,²⁶ including Remote Start and much more.²⁷

- ✓ Remote Vehicle Start
- ✓ Unlock/Lock
- ✓ Remote Notifications
- ✓ Remote Climate
- ✓ Guest Driver
- ✓ Smartwatch Compatibility
- ✓ Digital Key²⁸ Compatibility

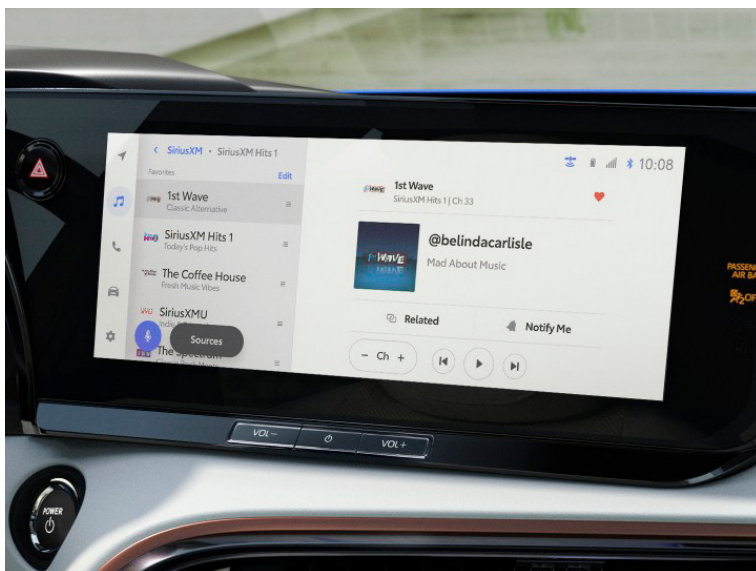


Limited interior shown in White SofTex^{®3} trim.

AUDIO MULTIMEDIA

Amplify your drive.

Mirai's 12.3-in. touchscreen display is a blank canvas ready to be customized with your favorite apps. With such a large display, dual screens can be shown simultaneously to show you turn-by-turn directions, access multimedia functions, make calls hands-free using Bluetooth^{®29} wireless connectivity and more.



Wireless Apple CarPlay[®]

With Mirai's wireless Apple CarPlay^{®30} compatibility standard, you can use your compatible iPhone^{®31} with the multimedia system to get directions, make calls, send and receive messages and listen to music, all while staying focused behind the wheel.



Wireless Android Auto[™]

Stay connected on the road. By pairing your compatible Android^{™32} phone with the audio multimedia system, Android Auto^{™33} lets you get real-time traffic alerts, make and receive phone calls, listen to your favorite soundtrack and more.



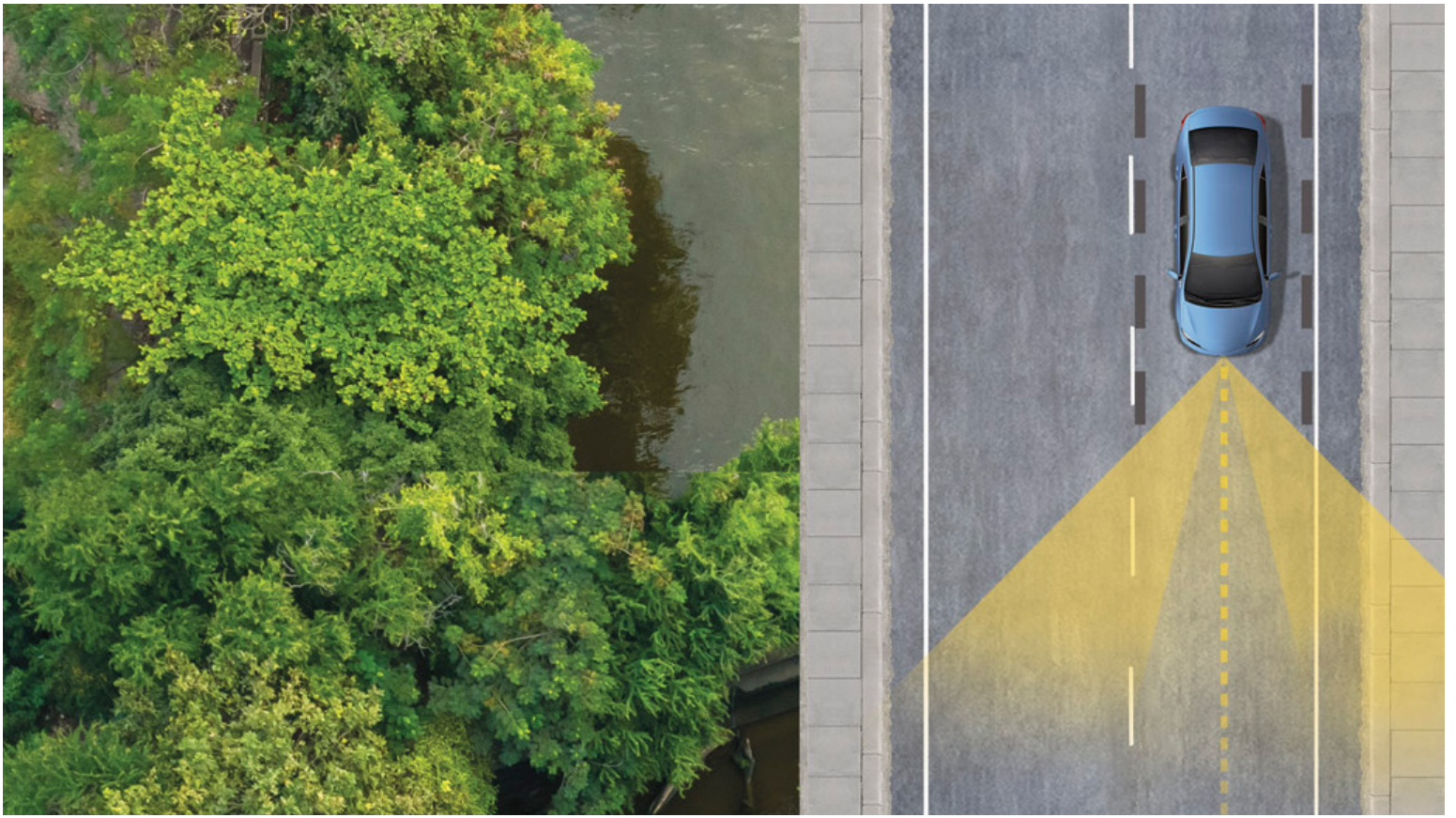
SiriusXM[®] 3-month trial subscription

SiriusXM^{®34} has premium entertainment that you won't hear anyplace else. With the 3-month trial,³⁵ you get 425+ channels, including 165+ channels in your vehicle, to enjoy ad-free music, plus sports, news, talk, comedy and more.



JBL[®] Premium Audio

Experience the clear sound of Mirai's standard JBL^{®36} Premium Audio system. With its 1200 watts, 14 speakers, surround sound and high-quality engineering, phenomenal sound is delivered to amp up every drive.



TOYOTA SAFETY SENSE™ 3.0

Peace of mind comes standard.

Toyota Safety Sense™ (TSS)³⁷ is a suite of safety and driver-assistance technologies designed to support driver awareness, decision-making, and vehicle operation. These features are available on many new Toyota vehicles at no additional cost.



Pre-Collision System with Pedestrian Detection³⁸



Proactive Driving Assist³⁹



Full-Speed Range Dynamic Radar Cruise Control⁴⁰



Lane Departure Alert with Steering Assist⁴¹



Automatic High Beams⁴²



Lane Tracing Assist⁴³



Road Sign Assist⁴⁴

MIRAI MODELS



XLE

Includes these key features

Mechanical/Performance

- ✓ Toyota Fuel Cell System (TFCS)
- ✓ Permanent magnet AC synchronous electric motor, 182 hp, 300 lb.-ft.
- ✓ Rear-Wheel Drive (RWD)
- ✓ Eco, Normal and Sport driving modes
- ✓ Front and rear multi-link suspension
- ✓ Front and rear ventilated disc brakes
- ✓ 76 city/71 highway/74 combined est. MPG^{e45}

Exterior Features

- ✓ Bi-beam auto-leveling LED headlights
- ✓ Multi-LED front and rear turn signal indicators, Daytime Running Lights (DRL), clearance lights and side marker lights etched with Mirai logo
- ✓ LED taillights and rear combination lights
- ✓ Satin-black front grille
- ✓ 19-in. twin-spoke aluminum alloy wheels with P235/55R19, 8J all-season tires
- ✓ Color-keyed heated power-folding outside mirrors with turn signal indicators, blind spot warning⁴⁸ and puddle lights

Interior Features

- ✓ Heated SofTex[®]-trimmed³ front seats include: –8-way power driver's seat and 4-way power front passenger seat
- ✓ Leather tilt/telescopic steering wheel, Bluetooth^{®29} hands-free phone and voice-command controls
- ✓ Dual zone automatic climate control
- ✓ One USB-C media port, three USB-C charge ports⁴⁶
- ✓ 12.3-in. color Multi-Information Display (MID)
- ✓ Smart Key System with remote keyless entry

Audio Multimedia

- ✓ 12.3-in. Toyota Audio Multimedia, JBL^{®36} Premium Audio including 14 speakers
- ✓ Wireless Apple CarPlay^{®30} & Android Auto^{™33} compatibility
- ✓ SiriusXM^{®34} 3-month trial subscription³⁵
- ✓ Safety Connect[®] with up to 10-year trial^{®15}
- ✓ Service Connect with up to 10-year trial^{®18}
- ✓ Remote Connect with 1-year trial^{®27}
- ✓ Drive Connect with 1-year trial^{®22}
- ✓ Wi-Fi Connect with 3 GB or up to 30-day trial^{®19}

Safety/Convenience

- ✓ Toyota Safety Sense[™] 3.0 (TSS 3.0)³⁷
- ✓ Traffic Jam Assist (TJA)⁴⁷
- ✓ Blind Spot Monitor (BSM)⁴⁸ with Rear Cross-Traffic Alert (RCTA)⁴⁹
- ✓ Star Safety System[™]
- ✓ Electric Parking Brake (EPB)⁵⁰ with Brake Hold⁵¹
- ✓ Hill Start Assist Control (HAC)⁵²
- ✓ Active Cornering Assist (ACA)

Options/Packages

- ✓ Advanced Technology Package includes:
 - Panoramic View Monitor¹¹
 - Front and Rear Parking Assist with Automatic Braking (PA w/AB)⁵⁴
 - Front-seat footwell illumination
 - Digital Key capability²⁸
 - Dual-tone heated outside mirrors
- ✓ 20-in. Super Chrome-finished aluminum alloy wheels



Limited

Adds to or replaces features offered on XLE

Mechanical/Performance

- ✓ Toyota Fuel Cell System (TFCS)
- ✓ Permanent magnet AC synchronous electric motor, 182 hp, 300 lb.-ft.
- ✓ Rear-Wheel Drive (RWD)
- ✓ Eco, Normal and Sport driving modes
- ✓ Front and rear multi-link suspension
- ✓ Front and rear ventilated disc brakes
- ✓ 67 city/64 highway/65 combined est. MPG^{e45}

Exterior Features

- ✓ Dual fixed Panoramic View Moonroof with power sliding shade
- ✓ 19-in. black machine-finished aluminum alloy wheels with P235/55R19, 8J all-season tires
- ✓ Rain-sensing variable windshield wipers

Interior Features

- ✓ Heated and ventilated perforated SofTex[®]-trimmed³ front and rear seats includes:
 - 8-way power driver's seat and front passenger seat with memory function
- ✓ Leather tilt/telescopic steering wheel line:
- ✓ 12.3-in. color Multi-Information Display (MID)
- ✓ Digital Key[™] capability (requires Remote Connect trial or subscription;²⁷ 1-year trial included)
- ✓ Multi-color ambient lighting
- ✓ Three-zone automatic climate control
- ✓ Active Sound Control (ASC)

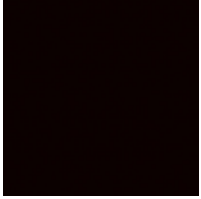
Audio Multimedia

- ✓ 12.3-in. Toyota Audio Multimedia, JBL^{®36} Premium Audio including 14 speakers
- ✓ Wireless Apple CarPlay^{®30} & Android Auto^{™33} compatibility
- ✓ SiriusXM^{®34} 3-month trial subscription³⁵
- ✓ Safety Connect[®] with up to 10-year trial^{®15}
- ✓ Service Connect with up to 10-year trial^{®18}
- ✓ Remote Connect with 1-year trial^{®27}
- ✓ Drive Connect with 1-year trial^{®22}
- ✓ Wi-Fi Connect with 3 GB or up to 30-day trial^{®19}

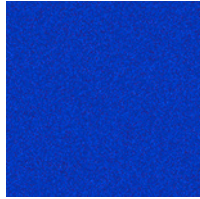
Safety/Convenience

- ✓ Toyota Safety Sense[™] 3.0 (TSS 3.0)³⁷
- ✓ Traffic Jam Assist (TJA)⁴⁷
- ✓ Blind Spot Monitor (BSM)⁴⁸ with Rear Cross-Traffic Alert (RCTA)⁴⁹
- ✓ Hill Start Assist Control (HAC)⁵²
- ✓ Active Cornering Assist (ACA)
- ✓ Advanced Park⁵⁵
- ✓ Panoramic View Monitor¹¹
- ✓ Front and Rear Parking Assist with Automatic Braking (PA w/AB)⁵⁴

MIRAI COLORS & TRIMS



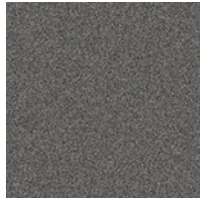
Black



Hydro Blue²



Supersonic Red²



Heavy Metal²



Elemental Silver²



Oxygen White²

XLE



Black SofTex^{®3} trim with silver-color accents

LIMITED



Black perforated SofTex^{®3} trim with silver-color accents



Black perforated SofTex^{®3} trim with copper-color accents



White perforated SofTex^{®3} trim with silver-color accents



White perforated SofTex^{®3} trim with copper-color accents

MIRAI WHEELS



19-in. XLE twin-spoke aluminum alloy wheels



19-in. Limited black machine-finished aluminum alloy wheels



20-in. XLE available Super Chrome-finished aluminum alloy wheels

MIRAI ACCESSORIES

This is a great way to add extra personality to your Mirai. Not every accessory is available in your area, so for a complete list of accessories, go to toyota.com/Mirai/accessories.



Alloy wheel locks—chrome-finished



Cargo tote⁵⁶



Carpet trunk mat



Emergency assistance kit



First aid kit with PPE



Rear bumper appliqué



Alloy wheel locks—black chrome-finished



All-weather floor liners⁵⁷

WARRANTIES

Every Toyota Car, Truck and SUV is built to exceptional standards. And that's not idle boasting. We back it up with these Limited Warranty Coverages:

Basic: 36 months/36,000 miles (all components other than normal wear and maintenance items).

Fuel-Cell-System-Related Component Coverage: Fuel Cell System components, including the Battery ECU, FC Air Compressor, FC Boost Converter, FC ECU, H₂ tanks, FC PCU (Power Control Unit), FC System, HF ECU (H₂ Fueling ECU), and Power Management ECU (HV ECU).

Hybrid Battery: HV battery is covered for 10 years or 150,000 miles, whichever comes first. Warranty coverage is subject to terms and conditions. Refer to applicable Warranty and Maintenance Guide for details.

Powertrain: 60 months/60,000 miles (engine, transmission/transaxle, drive system, seatbelts and airbags).

Rust-Through: 60 months/unlimited miles (corrosion perforation of sheet metal).

Emissions: Coverages vary under Federal and California regulations. Refer to applicable Warranty and Maintenance Guide for details.

Warranty coverage is subject to terms and conditions. Refer to applicable Warranty and Maintenance Guide for details.

Accessories: For Genuine Toyota Accessories purchased at the time of the new vehicle purchase, the Toyota Accessory Warranty coverage is in effect for 36 months/36,000 miles from the vehicle's in-service date, which is the same coverage as the Toyota New Vehicle Limited Warranty.

For Genuine Toyota Accessories purchased after the new vehicle purchase the coverage is 12 months, regardless of mileage, from the date the accessory was installed on the vehicle, or the remainder of any applicable new vehicle warranty, whichever provides greater coverage.

You may be eligible for transportation assistance if it's necessary that your vehicle be kept overnight for repairs covered under warranty. Please see your authorized Toyota dealership for further details.

For complete details about Toyota's warranties, please visit www.toyota.com, refer to the applicable Warranty and Maintenance Guide or see your Toyota dealer.

Exterior

	XLE	LIMITED
Bi-beam auto-leveling LED headlights	S	S
Multi-LED front and rear turn signal indicators, clearance lights, and side marker lights etched with Mirai logo	S	S
Daytime Running Lights (DRL)	S	S
LED taillights and rear combination lights	S	S
Satin-black front grille	S	S
Color-keyed heated power-folding outside mirrors with turn signal indicators, blind spot warning ⁴⁸ and puddle lights	S	
Dual-tone heated power-folding outside mirrors with turn signal indicators, blind spot warning ⁴⁸ and puddle lights	P	S
Dual fixed Panoramic View Moonroof with power sliding shade		S
19-in. twin-spoke aluminum alloy wheels with P235/55R19, 8J all-season tires	S	
19-in. black machine-finished aluminum alloy wheels with P235/55R19, 8J all-season tires		S
20-in. Super Chrome-finished aluminum alloy wheels with P245/45ZR20 all-season tires	O	
Rain-sensing variable windshield wipers		S
Windshield wiper de-icer	S	S
Color-keyed roof-mounted shark-fin antenna	S	
Black roof-mounted shark-fin antenna		S

Interior

Five-passenger seating with fixed rear seats	S	S
12.3-in. color gauge cluster including drive mode, speedometer, fuel efficiency and MID	S	S
Smart Key System includes remote keyless entry system with trunk-release, panic button and remote illuminated entry	S	S
Digital Key ²⁸ capability - Digital Key enables smartphone to be used instead of a physical key (requires Remote Connect trial or subscription; ²⁷ 1-year trial included)	P	S
UV-protected and water-repellent side windows	S	S
Active Sound Control (ASC)		S
Heated SofTex [®] -trimmed ³ front seats	S	
Heated and ventilated perforated SofTex [®] -trimmed ³ front and rear seats		S
8-way power-adjustable driver's seat and 4-way power-adjustable front passenger seat	S	
8-way power-adjustable driver's seat and front passenger seat with memory function		S
Leather tilt/telescopic steering wheel, Bluetooth ^{®29} hands-free phone and voice-command controls	S	
Leather tilt/telescopic steering wheel with memory and with audio, Bluetooth ^{®29} hands-free phone and voice-command controls		S
Dual zone automatic climate control	S	
Three-zone automatic climate control with individual temperature settings for driver, front passenger and rear-seat passengers and separate rear digital control panel		S
Rear touchscreen control panel with climate control function, sunshade toggle, rear-seat heating and ventilation, and audio controls		S
ALL AUTO control (heating/ventilation seats and air conditioning work in tandem automatically)	S	S
Ambient lighting available in eight colors and blue-illuminated footwells in front and rear		S
Auto-dimming rearview mirror and HomeLink ^{®10} universal transceiver	S	
Digital rearview mirror and HomeLink ^{®10} universal transceiver		S
Power door locks with shift-linked automatic locking feature	S	S
Power windows with one-touch auto up/down on all four doors, jam protection in all positions with power rear quarter windows	S	S
Overhead console with dome lights, touch-activated maplights, sunglasses storage and SOS button	S	S
Manual rear-seat sunshades		S
Power rear-window sunshade		S
Dual extendable sun visors with illuminated vanity mirrors	S	S
Front-door map pockets	S	S
Passenger-side lockable glove compartment	S	S
Qi-compatible wireless smartphone charging tray with charge indicator light ⁵⁹	S	S
Color Head-Up Display (HUD) with speedometer and navigation		S
One USB-C media port, three USB-C charge ports ⁴⁶	S	S

Audio Multimedia

12.3-in. Toyota Audio Multimedia touchscreen — includes 14 speakers, wireless Apple CarPlay ^{®30} & Android Auto ^{™33} compatibility, SiriusXM ^{®34} 3-month trial subscription. ³⁵ See toyota.com/audio-multimedia for details.	S	S
JBL ^{®36} Premium Audio – 14 JBL ^{®36} speakers including subwoofer and amplifier	S	S


MIRAI FEATURES

S = Standard O = Optional P = Available as part of a package

Connected Services¹⁴

	XLE	LIMITED
Safety Connect [®] with up to 10-year trial subscription ¹⁵ — includes Emergency Assistance Button, Enhanced Roadside Assistance, ¹⁶ Automatic Collision Notification, and Stolen Vehicle Locator. ¹⁷ Subscription required after trial. 4G network dependent.	S	S
Service Connect with up to 10-year trial subscription ¹⁸ — receive personalized maintenance updates and vehicle health reports. Subscription required after trial. 4G network dependent.	S	S
Remote Connect with 1-year trial subscription ²⁷ — remotely interact with your vehicle through the Toyota app ²⁶ via your smartwatch. Depending on grade, allows you to lock/unlock doors, start and stop the vehicle, locate your last parked location, check vehicle status and monitor guest drivers. Subscription required after trial. 4G network dependent.	S	S
Drive Connect with 1-year trial subscription ²² — includes Cloud Navigation ²⁵ with Google Points-of-Interest (POI) data, Intelligent Assistant ²⁴ with Hey Toyota, and Destination Assist. ²³ Subscription required after trial. 4G network dependent.	S	S
Wi-Fi Connect ¹⁹ — with AT&T Wi-Fi hotspot and Integrated Streaming with Apple Music ²⁰ and Amazon Music ²¹ compatibility. 30 days or up to 3GB trial included. ¹⁹ 4G network dependent. Subscription required after trial.	S	S

Safety and Convenience

 Star Safety System [™] — includes Enhanced Vehicle Stability Control (VSC), ⁶² Traction Control (TRAC), Anti-lock Brake System (ABS), Electronic Brake-force Distribution (EBD), Brake Assist (BA) ⁶³ and Smart Stop Technology [®] (SST) ⁶⁴	S	S
Blind Spot Monitor (BSM) ⁴⁸ with Rear Cross-Traffic Alert (RCTA) ⁴⁹	S	S
Toyota Safety Sense [™] 3.0 (TSS 3.0) ³⁷ — Pre-Collision System with Pedestrian Detection (PCS w/PD), ³⁸ Proactive Driving Assist (PDA), ³⁹ Full-Speed Range Dynamic Radar Cruise Control (DRCC), ⁴⁰ Lane Departure Alert with Steering Assist (LDA w/SA), ⁴¹ Automatic High Beams (AHB); ⁴² Lane Tracing Assist (LTA), ⁴³ Road Sign Assist (RSA) ⁴⁴	S	S
Eight airbags ⁶⁵ — includes driver and passenger front airbags, driver and front passenger side airbags, driver and front passenger knee airbags, and side curtain airbags	S	S
Safety Connect [®] ¹⁵ — includes Emergency Assistance Button, Enhanced Roadside Assistance ¹⁶ and Automatic Collision Notification and Stolen Vehicle Locator. ¹⁷ Available by subscription after 10-year trial has ended. 4G network dependent.	S	S
3-point seatbelts for all seating positions; driver-side Emergency Locking Retractor (ELR) and Automatic/ Emergency Locking Retractors (ALR/ELR) on all passenger seatbelts	S	S
Advanced Park ²⁵		S
Panoramic View Monitor ¹¹ with 360-degree Overhead View in low-speed drive and reverse, and Curb View	P	S
Front and Rear Parking Assist with Automatic Braking (PA w/AB) ⁵⁴	P	S
Anti-theft system with alarm and engine immobilizer ⁶⁶	S	S
Electric Parking Brake (EPB) ³⁹ with Brake Hold Function ⁵¹	S	S
LATCH (Lower Anchors and Tethers for CHildren) includes lower anchors on outboard rear seats	S	S
Adjustable shoulder anchors on front seatbelts with seatbelt pretensioners on front and rear seat positions	S	S
Hill Start Assist Control (HAC) ³²	S	S
Active Cornering Assist (ACA)	S	S
Electric Power Steering (EPS)	S	S
Tire Pressure Monitor System (TPMS) ⁶⁷ with individual direct pressure readout	S	S
Tire repair kit	S	S
Traffic Jam Assist (TJA) ⁴⁷	S	S
Backup camera ⁴³	S	S
Child-protector rear door locks and power window lockout control	S	S

ToyotaCare

No cost maintenance plan ⁴	\$0 (No Cost)	\$0 (No Cost)
24-hour Roadside Assistance ⁴	\$0 (No Cost)	\$0 (No Cost)

Toyota drivers love to embrace new things and find new adventures. They just can't sit still. And proper vehicle maintenance is key to helping keep your Toyota safe, dependable and ready to explore. That's why we include a no cost maintenance plan with the purchase or lease of every new Mirai for 3 years or 35,000 miles, whichever comes first.⁴ 24-hour Roadside Assistance is also included for 3 years and unlimited miles.⁴ For all the details and exclusions, please call, visit online or stop by your local Toyota dealer today. Valid only in the continental U.S. and Alaska. Let's drive with confidence. Welcome to the ToyotaCare advantage.

Mechanical/Performance

XLE

LIMITED

TOYOTA FUEL CELL SYSTEM (TFCS)

Type	Polymer electrolyte fuel cell	Polymer electrolyte fuel cell
Volume (L)	142.2	142.2
Max power output (kW)	128	128
Output density by volume (kW/L)	4.4	4.4
Output density by weight (kW/kg)	5.4	5.4
Weight (kg)	32	32
Number of cells	330	330
Separator material:	Titanium	Titanium

HYDROGEN TANK

Number of tanks	3	3
Type-4	S	S
Maximum filling pressure (MPa)	87.5	87.5
Normal operational pressure (MPa)	70	70
H2 tank capacity (kg)	5.6	5.6
Refueling time: approximately five minutes ¹	S	S
Inner layer: polymer liner	S	S
Middle layer: carbon-fiber-reinforced polymer	S	S
Surface layer: fiberglass-reinforced polymer	S	S

DRIVE BATTERY

Lithium-ion (Li-ion) battery	S	S
Power output (V)	310.8	310.8
Battery capacity (Ahr)	4.0	4.0
Battery capacity (kWh)	1.24	1.24
Battery Pack Weight (kg)	44.6	44.6

MECHANICAL/PERFORMANCE

Rear-Wheel Drive (RWD)	S	S
Permanent magnet AC synchronous electric motor	S	S
Electric motor max output (hp)	182	182
Electric motor max torque (lb.-ft.)	300	300
Eco, Normal and Sport driving modes	S	S
Multi-link front and rear suspension	S	S
0-60 mph (approx. seconds) ⁶⁸	9.2	9.2
Zero Emission Vehicle (ZEV)	S	S
Electric Power Steering (EPS)	S	S
Ventilated disc brakes (front, rear)	S	S
Steering wheel (lock-to-lock, turns)	2.51	2.51

Dimensions

EXTERIOR (in.)

Overall length/width	195.8 / 74.2	195.8 / 74.2
Overall height	57.9	57.9
Wheelbase	114.9	114.9
Track (front/rear)	63.3 / 63.1	63.3 / 63.1
Ground clearance	5.9	5.9

INTERIOR (in.)

Head room (front/rear)	38.4/36.7	-
Head room with moonroof (front/rear)	-	38.4/37.4
Shoulder room	58.4/54.4	58.4/54.4
Leg room (front/rear)	42.2/33.1	42.2/33.1
Turning circle diameter, curb-to-curb (ft.)	38.5	38.5

MIRAI SPECIFICATIONS

S = Standard O = Optional P = Available as part of a package

Weights/Capacities

	XLE	LIMITED
Seating capacity	5	5
Curb weight (lb.)	4,255	4,335
Cargo volume (cu. ft.) ³⁶	9.6	9.6

Mileage Estimates

	XLE	LIMITED
MPGe estimates (city/highway/combined) ⁴⁵	76/71/74	67/64/65
Range (miles) ¹²	402	357

Packages/Options

Advanced Technology Package: Includes Panoramic View Monitor ¹¹ with 360-degree Overhead View in low-speed drive and reverse, and Curb View; Front and Rear Parking Assist with Automatic Braking (PA w/AB); ⁵⁴ front-seat foot illumination; Digital Key capability; ²⁸ and dual-tone heated outside mirrors	O	
20-in. Super Chrome-finished aluminum alloy wheels	O	

Warranty Information^{60, 61}

Basic Warranty	36 months/36,000 miles	36 months/36,000 miles
Fuel-Cell-System-Related Component Coverage ⁵	96 months/100,000 miles	96 months/100,000 miles
Powertrain	60 months/60,000 miles	60 months/60,000 miles
Corrosion Perforation	60 months/unlimited miles	60 months/unlimited miles
Restraint Systems	60 months/60,000 miles	60 months/60,000 miles
Hybrid Systems	96 months/100,000 miles	96 months/100,000 miles
Hybrid Battery ⁶	120 months/150,000 miles	120 months/150,000 miles

DISCLOSURES

1. Fueling time varies with hydrogen fueling pressure and ambient temperature. 2. Extra-cost color. 3. SofTex® is a registered trademark of Toyota Motor Sales, U.S.A., Inc. 4. ToyotaCare for Mirai covers normal factory scheduled maintenance for three years or 35,000 miles, whichever comes first. Certain models require a different maintenance schedule as described in their Maintenance Guide. 24-hour Roadside Assistance is also included for three years, unlimited mileage. Roadside Assistance does not include parts and fluids. Valid only through Authorized Mirai Fuel Cell Dealers. Excludes rental company fleet sale vehicles. See an Authorized Mirai Fuel Cell Dealer for details and exclusions. Valid only in the continental U.S. 5. Valid only at Authorized Mirai Fuel Cell Dealers in the continental United States. See dealer for details and exclusions. 6. Hybrid-related components are covered for 8 years from original date of first use or 100,000 miles, whichever comes first. The HV battery may have longer coverage under emissions warranty. See Owner's Warranty and Maintenance Guide for details. 7. Allows for single occupant use of CA HOV lanes. Incentives are not within Toyota's control and are subject to change or be terminated without notice. Eligibility may be based on income and other factors. Information provided does not constitute tax or legal advice. Customers should consult with their own advisors to determine eligibility and specific amount of benefit available. See <https://cleanvehiclerebate.org> for more details. 8. The twenty-one complimentary days will expire after the third year and any unused days will not carry over. 9. Customers who lease a 2024 Mirai by March 31, 2025 will receive complimentary fuel for three years or \$15,000, whichever comes first. Customers who purchase a 2024 Mirai by March 31, 2025 will receive complimentary fuel for six years or \$15,000, whichever comes first. Complimentary fuel term begins as of card activation or 90 days after Mirai lease or purchase commencement date, whichever is earlier. Fuel card is nontransferable. 10. HomeLink® and the HomeLink® house icon are registered trademarks of Gentex Corporation. 11. The Panoramic View Monitor does not provide a comprehensive view of the area surrounding your vehicle. Look around to confirm clearance. See Owner's Manual for limitations. 12. EPA-estimated 402 total driving range rating for 2024 Mirai XLE and 357 total driving range rating for 2024 Mirai Limited. Use for comparison purposes only. Your mileage will vary for many reasons, including refueling practices, your vehicle's condition and how/where you drive. See www.fueleconomy.gov. 13. The Mirai meets all applicable Federal Motor Vehicle Safety Standards requirements, almost all of which apply equally to similar gasoline powered vehicles. In addition, Toyota has engineered the Mirai and its hydrogen tanks to meet international Global Technical Regulation No. 13. 14. Toyota Connected Services depend on certain factors outside of Toyota's control in order to operate, including cellular network availability and GPS signal. Without either of these things, operability may be limited or precluded, including access to response center and emergency support. Services vary by vehicle and are subject to change at any time without notice. Requires app download/registration and subscription after trial (if applicable). Terms of Use apply. Data charges may apply. See Owner's Manual and <https://www.toyota.com/connected-services/>. For Toyota's Connected Services' data collection, use, sharing and retention practices, please visit <https://www.toyota.com/support/privacy-notice/>. All trials begin on original purchase or lease date of new vehicle, with the exception of Wi-Fi for which trial begins at time of activation. Paid subscription required after trial (if applicable). 15. Safety Connect® depends on factors outside of Toyota's control in order to operate, including cellular network availability and GPS signal. Without either of these things, operability may be limited or precluded, including access to response center and emergency support. Stolen vehicle police report required to use Stolen Vehicle Locator. If subscription includes Automatic Collision Notification, it will activate only in limited circumstances. Services vary by vehicle and are subject to change at any time without notice. Terms of Use apply. Data charges may apply. See Owner's Manual and <https://www.toyota.com/connected-services/>. For Toyota's Connected Services' data collection, use, sharing and retention practices, please visit <https://www.toyota.com/support/privacy-notice/>. A Safety Connect® trial is included for up to 10 years on select vehicles with paid Connected Services packages. See your Toyota dealer for details. 4G network dependent. 16. Requires cellular network availability, a cellular connection and GPS signal. May not work in all areas. Service may vary by vehicle and region. See Toyota dealer for details and exclusions. 17. Building and/or parking structures may limit system effectiveness. Stolen vehicle police report required to use Stolen Vehicle Locator. For additional assistance contact the Toyota Brand Engagement Center at 1-800-331-4331. 18. Service Connect depends on certain factors outside of Toyota's control in order to operate, including cellular network availability and GPS signal. Without either of these things, operability may be limited or precluded. Information provided is based on the last time data was collected from vehicle and is not real-time data. Services vary by vehicle and are subject to change at any time without notice. Terms of Use apply. Data charges may apply. See usage precautions and service limitations in Owner's Manual and <https://www.toyota.com/connected-services/>. To learn about Toyota's Connected Services' data collection, use, sharing and retention practices, please visit <https://www.toyota.com/support/privacy-notice/>. The Service Connect trial is included for up to 10 years. 4G network dependent. 19. Service not available everywhere or in every vehicle. Depends on cellular network availability and GPS signal. Without either of these things, operability may be limited or precluded. Up to 5 devices can be supported using in-vehicle connectivity. Services subject to change at any time without notice. The Wi-Fi Connect trial begins at the time of enrollment and expires the earlier of 3GB data use or the 1-month trial period ends. Paid subscription required after trial. Select models include Integrated Streaming capability, which requires a separate subscription to third-party provider services. Data charges may apply. Valid in the contiguous U.S. and Alaska. Go to <https://myvehicle.att.com/#/toyota/learn?language=en&country=US> for terms and conditions. The Wi-Fi Connect trial begins at the time of enrollment and expires when 30 days or the earlier of 3GB of data is used or the 1-month trial period ends. Subscription required after trial. Integrated Streaming requires separate subscriptions to third-party provider services. Terms of Use apply. 20. Apple Music and the Apple logo are trademarks of Apple Inc., registered in the U.S. and other countries. Requires Wi-Fi Connect subscription after trial (if applicable) and your own Apple Music account. 21. Amazon, Amazon Music, and related marks are trademarks of Amazon.com, Inc., or its affiliates. 22. Drive Connect availability and accuracy depend on certain factors outside of Toyota's control in order to operate, including 4G network availability, a cellular connection and GPS signal. Without any one or more of these things, operability may be limited or precluded. Services subject to change at any time without notice. Requires app download/registration and subscription after trial (if applicable). Terms of Use apply. Data charges may apply. See Owner's Manual and <https://www.toyota.com/connected-services/> for limitations. To learn about Toyota's Connected Services data collection, use, sharing and retention practices, visit <https://www.toyota.com/support/privacy-notice/>. Trial period begins on original purchase or lease date of new vehicle. Paid subscription required after trial (if applicable). Terms of Use apply. 23. On select models, Destination Assist will require a trial or subscription to Drive Connect. Availability and accuracy depend on certain factors outside of Toyota's control in order to operate, including a cellular connection and GPS signal. Without either of these, operability may be limited or precluded. Services subject to change at any time without notice. Requires app download/registration and subscription to Drive Connect after trial (if applicable). Terms of Use apply. Data charges may apply. See Owner's Manual and <https://www.toyota.com/connected-services/> for limitations. To learn about Toyota's Connected Services data collection, use, sharing and retention practices, visit <https://www.toyota.com/support/privacy-notice/>. The Destination Assist trial period begins on original purchase or lease date of new vehicle. Paid subscription required after trial (if applicable). Terms of Use apply. 24. Intelligent Assistant requires a trial or subscription to Drive Connect. Drive Connect availability and accuracy depend on certain factors outside of Toyota's control in order to operate, including 4G network availability, a cellular connection and GPS signal. Without any one or more of these things, operability may be limited or precluded. Services subject to change at any time without notice. Requires app download/registration and subscription after trial (if applicable). Terms of Use apply. Data charges may apply. See Owner's Manual and <https://www.toyota.com/connected-services/> for limitations. To learn about Toyota's Connected Services data collection, use, sharing and retention practices, visit <https://www.toyota.com/support/privacy-notice/>. 25. Cloud Navigation requires a trial or subscription to Drive Connect. Drive Connect availability and accuracy depend on certain factors outside of Toyota's control in order to operate, including 4G network availability, a cellular connection and GPS signal. Without any one or more of these things, operability may be limited or precluded. Services subject to change at any time without notice. Requires app download/registration and subscription after trial (if applicable). Terms of Use apply. Data charges may apply. See Owner's Manual and <https://www.toyota.com/connected-services/> for limitations. To learn about Toyota's Connected Services data collection, use, sharing and retention practices, visit <https://www.toyota.com/support/privacy-notice/>. 26. An active Remote Connect trial or subscription is required to use the features mentioned in the Toyota app. 27. Use only if aware of circumstances surrounding vehicle and it is legal and safe to do so (e.g., do not remotely start a gas engine vehicle in an enclosed space or if vehicle is occupied by a child). Remote Connect depends on certain factors outside of Toyota's control in order to operate, including 4G network availability, a cellular connection and GPS signal. Without any one or more of these things, operability may be limited or precluded. Services subject to change at any time without notice. Digital Key also requires Bluetooth® connectivity. Remote start/stop not available on manual transmission-equipped models. Remote start/stop and/or lock/unlock available on select models. Remote Connect is included with select paid Connected Services packages. See your Toyota dealer for details. Terms of Use apply. Data charges may apply. See Owner's Manual and <https://www.toyota.com/connected-services/> for additional details. To learn about Toyota's Connected Services' data collection, use, sharing and retention practices, please visit <https://www.toyota.com/support/privacy-notice/>. Trial period begins on original purchase or lease date of new vehicle. Paid subscription required after trial (if applicable). Terms of Use apply. 28. Digital Key function requires Remote Connect trial or subscription. Use only if aware of circumstances surrounding vehicle and it is legal and safe to do so (e.g., do not remotely start engine if vehicle is in an enclosed space or vehicle is occupied by a child). Remote Connect depends on factors outside of Toyota's control, including an operative telematics device, a cellular connection, GPS signal, and the availability of a compatible wireless network, without which system functionality and availability may be limited or precluded. Digital Key also requires Bluetooth® connectivity. Service may vary by vehicle and region. Requires app download and registration/subscription after trial (if applicable). Terms of Use apply. Data charges may apply. Services subject to change at any time without notice. See usage precautions and service limitations in Toyota Owner's Manual and <https://www.toyota.com/connected-services/> for additional details. To learn about Toyota's Connected Services data collection, use, sharing and retention practices, please visit <https://www.toyota.com/support/privacy-notice/>. 29. A compatible Bluetooth®-enabled phone must first be paired. Phone performance depends on software, coverage and carrier. The Bluetooth® word mark and logos are registered trademarks of Bluetooth SIG, Inc. Use of such marks by Toyota is under license. 30. To wirelessly use Apple CarPlay® on your car display, you need a compatible smartphone with an active data plan. You can check which smartphones are compatible at <https://www.apple.com/ios/carplay/>. Operability depends on network availability, a cellular connection and GPS signal. Services subject to change at any time without notice. Data charges may apply. To learn more, go to <https://www.toyota.com/audio-multimedia/>. To learn more about Toyota's connected services data collection, use, sharing and retention practices, please visit <https://www.toyota.com/support/privacy-rights/>. 31. iPhone® is a registered trademark of Apple Inc. All rights reserved. 32. Google, Android, Android Auto, YouTube Music and other marks are trademarks of Google LLC. 33. Compatible Android 8.0+ phone, compatible active data plan, and Android Auto app required. Operability depends on network availability, a cellular connection and GPS signal. To use Android Auto on your car display, you'll need an Android phone running Android 8 or higher, an active data plan, and the Android Auto app. Services subject to change at any time without notice. Data charges may apply. To learn more, go to <https://www.toyota.com/audio-multimedia/>. To learn more about Toyota's Connected Services data collection, use, sharing and retention practices, please visit <https://www.toyota.com/support/privacy-notice/>. 34. Trial length and service availability may vary by model, model year or trim. Service will automatically stop at the end of your trial subscription period unless you decide to continue service. If you do not wish to enjoy your trial, you can cancel by calling the number below. All SiriusXM services require a subscription, each sold separately by SiriusXM after the trial period. **Service subject to the SiriusXM Customer Agreement and Privacy Policy; visit www.siriusxm.com to see complete terms and how to cancel which includes calling 1-866-635-2349.** Some services and features are subject to device capabilities and location availability. All fees, content and features are subject to change. SiriusXM, Pandora and all related logos are trademarks of Sirius XM Radio Inc. and its respective subsidiaries. 35. SiriusXM® services require a subscription after trial period. See SiriusXM Customer Agreement for complete terms at www.siriusxm.com. 36. JBL® is a registered trademark

DISCLOSURES

of Harman International Industries, Inc. **37.** Toyota Safety Sense™ effectiveness is dependent on many factors including road, weather and vehicle conditions. Drivers are responsible for their own safe driving. Always pay attention to your surroundings and drive safely. See Owner's Manual for limitations. **38.** The Pre-Collision System (PCS) with Pedestrian Detection (PD) is designed to determine if impact is imminent and help reduce impact speed and damage in certain frontal collisions involving a vehicle, a pedestrian, a bicycle, or a motorcyclist. PCS w/PD is not a substitute for safe and attentive driving. System effectiveness depends on many factors, such as speed, size and position of pedestrian or bicyclist and weather, light and road conditions. See Owner's Manual for limitations. **39.** Proactive Driving Assist (PDA) is designed to detect certain objects or curves in the road and provide gentle braking and/or steering support. PDA is not a substitute for safe and attentive driving. System effectiveness depends on many factors, such as speed, size and position of detected objects and weather, light and road conditions. See Owner's Manual for additional limitations and details. **40.** Full-Speed Range Dynamic Radar Cruise Control is designed to assist the driver and is not a substitute for safe and attentive driving practices. System effectiveness is dependent on road, weather and traffic conditions. See Owner's Manual for additional limitations and details. **41.** Lane Departure Alert with Steering Assist is designed to read visible lane markers under certain conditions. It provides a visual/audible alert and slight steering force when lane departure is detected. It is not a collision-avoidance system or a substitute for safe and attentive driving. Effectiveness depends on many factors including road, weather and vehicle conditions. See Owner's Manual for limitations. **42.** Automatic High Beams operate at speeds above 21 mph. See Owner's Manual for instruction and limitations. **43.** The Lane Tracing Assist (LTA) lane centering function is designed to read visible lane markers and detect other vehicles under certain conditions. It is only operational when DRCC is engaged. See Owner's Manual for limitations. **44.** Road Sign Assist only recognizes certain road signs. See Owner's Manual for limitations. **45.** EPA-estimated 76 city/71 hwy/74 combined MPGe rating for 2024 Mirai XLE and 67 city/64 hwy/65 combined MPGe rating for 2024 Mirai Limited. MPGe is the EPA-equivalent of gasoline fuel efficiency for electric-mode operation. Use for comparison purposes only. Your MPGe/miles per kilowatt-hour will vary for many reasons, including your vehicle's condition and how/where you drive. See www.fueleconomy.gov. **46.** May not be compatible with all mobile phones, smart devices, tablets, e-readers, MP3/WMA players and like models. **47.** Traffic Jam Assist is not an automated driving system, requires driver supervision at all times, and is designed to function on controlled access freeways at speeds of 25 mph or less. Use this system in accordance with applicable laws. Before operating, refer to Owner's Manual for instructions and limitations. **48.** Do not rely exclusively on Blind Spot Monitor. Look over shoulder and use turn signal. See Owner's Manual for limitations. **49.** Do not rely exclusively on the Rear Cross-Traffic Alert. Visually confirm clearance during use. See Owner's Manual for limitations. **50.** When the system is on, Electric Parking Brake is designed to engage the Parking Brake under limited conditions. It may not hold the vehicle under all conditions. See Owner's Manual for additional limitations and details. **51.** When the system is on and the vehicle is in Drive, Brake Hold may temporarily keep the brakes engaged after the driver brings the vehicle to a complete stop. See Owner's Manual for limitations. **52.** Hill Start Assist Control is designed to minimize backward rolling on steep ascents. Not a substitute for safe driving judgment and practices. Speed, grade, surface conditions, driver input, etc., can all affect HAC function. See Owner's Manual. **53.** The backup camera does not provide a comprehensive view. Always look over shoulder and use outside mirrors. See Owner's Manual for limitations. **54.** Front and Rear Parking Assist with Automatic Braking (PA w/AB) may warn drivers of, and potentially brake for front and rear collisions with certain objects when traveling at low speeds. Drivers should visually confirm clearance during use. See Owner's Manual for instructions and limitations. **55.** Do not overly rely on Advanced Park and use only in accordance with applicable laws. Remain attentive to surroundings. Before operating, review Owner's Manual for instructions and limitations. **56.** Cargo and load capacity limited by weight and distribution. Always properly secure cargo and cargo area. **57.** This floor mat/floor liner was designed specifically for use in your model and model year vehicle and SHOULD NOT be used in any other vehicle. To avoid potential interference with pedal operation, each mat/liner must be secured with its fasteners. Do not install a floor mat/floor liner on top of an existing floor mat/floor liner. **58.** Toyota strives to build vehicles to match customer interest and thus they typically are built with popular options and option packages. Not all options/packages are available separately and some may not be available in all regions of the country. See toyota.com for information about options/packages commonly available in your area. If you would prefer a vehicle without any or with different options, contact your dealer to check for current availability or the possibility of placing a special order. Color(s) depicted may vary based on multiple factors, including ambient lighting and the format in which it is being viewed (e.g., computer, mobile device or print). **59.** Charging may not be compatible with all mobile phones, smart devices, tablets, e-readers, MP3/WMA players and like products. **60.** For information regarding the Federal and California Emission Control Warranties, and Tire Limited Warranties, please see the applicable Warranty and Maintenance Guide. Emission coverages vary under Federal and California regulations. **61.** Date and mileage limitations refer to whichever occurs first from the date of purchase. Warranty coverage is subject to other terms and conditions. Refer to applicable Warranty and Maintenance Guide for full details. **62.** Vehicle Stability Control is not a substitute for safe and attentive driving practices. Factors including speed, road conditions, weather and steering input can affect whether VSC will be effective. See Owner's Manual for limitations. **63.** Brake Assist is designed to help the driver take advantage of ABS and is not a substitute for safe driving practices. Braking effectiveness also depends on proper vehicle maintenance, tire and road conditions. See Owner's Manual for additional limitations and details. **64.** Smart Stop Technology® will reduce power to help the brakes bring vehicle to a stop during certain contemporaneous brake and accelerator pedal applications. See Owner's Manual for limitations. **65.** Airbag systems supplement the seatbelts and are designed to inflate only under certain conditions and in certain types of severe collisions. Always wear seatbelt, sit upright in middle and as far back in seat as possible to help decrease risk of injury. Do not put objects in front of an airbag. See Owner's Manual for limitations. **66.** The engine immobilizer is a state-of-the-art anti-theft system initiated when the key is inserted into ignition switch or a Smart Key fob is in/near the vehicle. Engine will only start if the code in the transponder chip inside the key/fob matches the code in vehicle's immobilizer. The transponder chip is embedded in the key/fob and can be costly to replace. For lost key or fob, see a Toyota dealer or go to www.aloa.org to find a qualified locksmith for high-security key service. **67.** The Tire Pressure Monitor System alerts the driver when tire pressure is critically low. For optimal tire wear and performance, tire pressure should be checked regularly with a gauge; do not rely solely on the monitor system. See Owner's Manual for limitations and details. **68.** Performance figures are for comparison only and were obtained with prototype vehicles by professional drivers.

Toyota strives to build vehicles to match customer interest and thus they typically are built with popular options and option packages. Not all options/packages are available separately and some may not be available in all regions of the country. See toyota.com for information about options/packages commonly available in your area. If you would prefer a vehicle without any or with different options, contact your dealer to check for current availability or the possibility of placing a special order.

Color(s) depicted may vary based on multiple factors, including ambient lighting and the format in which it is being viewed (e.g., computer, mobile device or print).

Some vehicles are shown with available equipment. Seatbelts should be worn at all times. For details on vehicle specifications, standard features and available equipment in your area, contact your Toyota dealer. A vehicle with particular equipment may not be available at the dealership. Ask your Toyota dealer to help locate a specifically equipped vehicle.

All information presented herein is based on data available at the time of posting, is subject to change without notice and pertains specifically to mainland U.S.A. vehicles only. Vehicles shown may be prototypes, shown using visual effects and/or shown with options. Actual models may vary.



Mobility

For Toyota Mobility program details, go to www.toyota.com/mobility or call the Toyota Brand Engagement Center at 1-800-331-4331