



THE 2007 C-CLASS



Mercedes-Benz



C280 Sedan.

The C-Class Sedan. An elemental experience.



The C-Class

DESIGN

Interior design	4
Seating comfort	6
Entertainment	8
Exterior design	10

DYNAMICS

Engines	14
Transmissions	16

4MATIC™	18
---------	----

SAFETY	20
--------	----

COLOURS AND MATERIALS

Paint, upholstery and trim	24
Combination options	25

EQUIPMENT

Equipment listing	26
Sport Package	28
Accessories	31

TECHNICAL FEATURES

Technical data	32
----------------	----

SERVICE AND SUPPORT

Customer care and website	33
---------------------------	----





C350 Sedan.



C350 4MATIC™ Sedan shown with optional COMAND APS with navigation.



Control at your fingertips.

In the redesigned C-Class interior, the instrument cluster forms the focal point of an attractive and smartly designed cockpit. The four chronometer-style circular instruments, with stylish and modern white backlighting, provide the perfect overview of automotive exhilaration in progress. From there, everything is ergonomically positioned like never before; climate control, audio, power-window and a multitude of other functions are designed completely with the driver in mind. The results are exceptional ease of use and an unparalleled driving experience.

The C-Class also comes standard with a passion for details. The improved interior enhances an already luxuriously-appointed haven. New in the 2007 edition: high gloss Laurel wood trim on the dash and door panels, and Black Bird's Eye Maple wood trim standard in the C350 Sedan and as part of the optional C230 Sport Package. As well, the multifunction leather steering wheel and shift knob, plus the seat belts, now come colour matched to your choice of four rich interior upholstery selections. In the C-Class, luxury is found in even the smallest of details.

Designed for detours.

You may well find yourself seeking out detours in the new C-Class. Not just because of its impressive performance, but because of its luxurious interior comfort.

The driver and front passenger seats are 4-way power adjustable for the most personal settings, with height and backrest adjustment functions at your fingertips. With a heating function for those chilly mornings (optional on the C230), the ergonomic, extra-comfortable seats are upholstered in ARTICO leather.¹ Sporty and easy-to-clean, ARTICO leather¹ is also extremely durable. Premium leather upholstery is also an option on all models.

For the comfort of all passengers, the standard THERMATIC automatic climate control system allows independent climate control for the left and right-hand sides of the vehicle. Dust and pollen filters plus an air recirculation switch ensure there is clean, fresh air on board at all times. Your set temperature remains constant, even when temperatures outside sink or soar.



¹Man-made leather



AUDIO

SAT

NAV

MAP

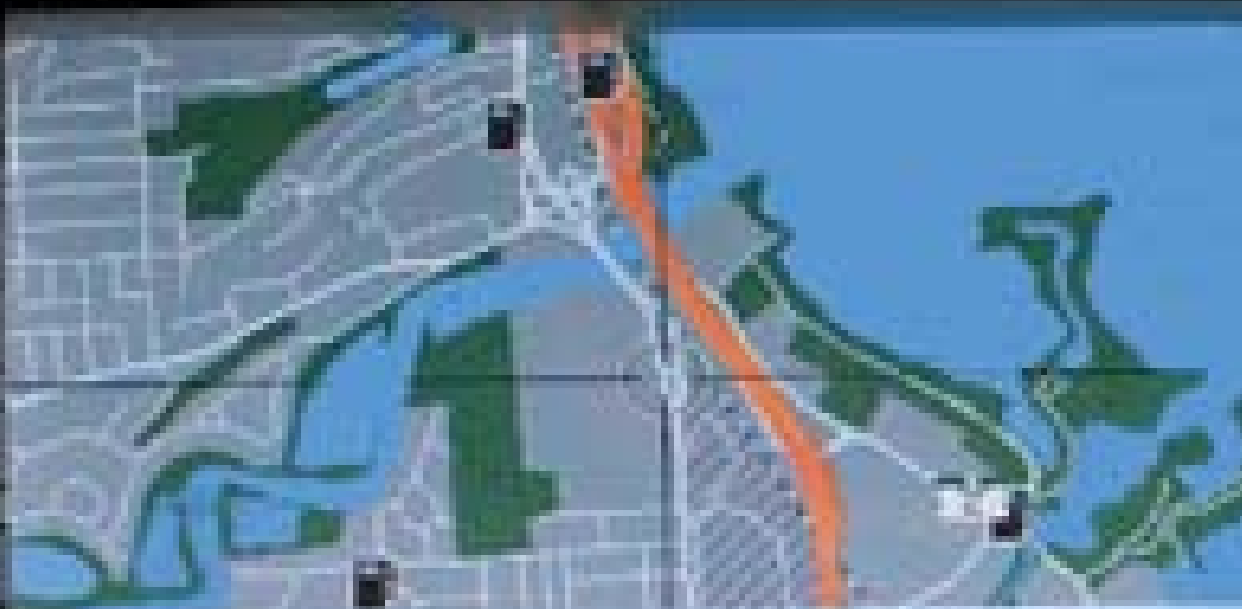
TTL

SERV

SEEK

SEEK

MAP



2700m



THE QUEENSWAY

RPT

MUTE

EJECT

END

SEND



Expand your senses.

Transform your C-Class experience into a personalized environment with inspiring electronic and entertainment options.

The central COMAND APS control and display system can be added to the C280 and C350 Sedans, and combines a navigation system with an MP3-compatible CD player and AM/FM radio.

Navigation is made easy thanks to COMAND APS Global Positioning System (GPS) technology. Once you've selected a destination, voice instructions or directional arrows in the display will take you wherever you want to go. The crisp 6.5" colour display also plays host to the controls for your audio system, providing clear, user-friendly menus.

While your eyes are watching the road, treat your ears to something special. The harman/kardon® LOGIC7® surround sound system, optional for all models, will add an awe-inspiring 12-loudspeaker system with a combined total of 420 watts of optimum quality sound. The acoustics for this system have been specially adapted to the C-Class interior and placed in optimal locations for best projection. It's like being behind the wheel of an amphitheatre.

Listen to your eyes.

Elegant solutions are often simple solutions. One of the most beautiful examples of this is the C-Class. A seamless blend of elegance and powerful lines form an overall appearance that tingles the senses. High-gloss, clear-lens headlamps, large air intakes perfectly carved into the front apron, a sleek three-louvre radiator grille, and side skirts that seductively merge into a sporty rear bumper are just some features that capture the eye – and the imagination.

Rest assured, the yearnings of the speed-conscious have not been overlooked. The C350 Sedan features a multitude of extra details: new AMG-style dual exhaust pipes, an AMG-style rear lip spoiler, 17" 6-spoke sport wheels and Bi-Xenon headlamps as standard features.





C350 4MATIC™ Sedan.





C230 Sedan.





Energy meets synergy, power meets confidence.

Exceptionally smooth and refined, the C-Class' three DOHC V-6 engines provide a passion to perform. Starting with lightweight alloy blocks and heads to trim weight and improve overall vehicle balance, these power plants also boast continuously variable timing of the intake and exhaust valves, plus an advanced intake system that optimizes the engine's breathing at every rpm range. This means a broad, flat torque curve as well as lower emissions.

It's always a smooth ride thanks to a unique balancer shaft that ensures quieter engine operation and reduces overall vibrations.

C230 2.5-litre V-6

201 hp and 181 lb-ft of torque make for outstanding responsiveness. Variable valve timing bestows it with an incredibly broad power band for swift acceleration and passing performance.

C280 3.0-litre V-6

228 hp and 221 lb-ft of torque assures you rapid response whether taking off from a stop or merging onto a crowded highway.

C350 3.5-litre V-6

268 hp and 258 lb-ft of torque makes this engine one of the most powerful standard V-6 engines in its class, which means tremendous performance in every situation.

Agility through innovation.

The C-Class' standard DIRECT CONTROL technology package gives you more driving enjoyment, particularly through corners, with no loss of ride comfort. The 6-speed manual transmission translates the engine output into smooth gear changes, while more direct steering and reduced pitch and roll help to create a more agile driving experience. The 6-speed manual transmission can be enjoyed standard on the C230 and C350 Sedans while 4MATIC™ models feature an electronically-controlled 5-speed automatic transmission that reacts to your individual driving style.

7G-TRONIC: The world's first 7-speed automatic transmission ensures barely perceptible shifts even in the upper gears. Thanks to the integral transmission control, 7G-TRONIC can skip several gears when downshifting for a quick burst of speed. It also boasts a second reverse gear with a higher transmission ratio that ensures pulling away on ice and snow is easier and safer. This transmission comes standard on the C280 and as an option on the C230 and C350 Sedans.







C350 4MATIC™ Sedan.



Confidence at uncertain times.

Whether you're challenging a winding back road on a sunny day or a rain-slicked highway in the middle of the night, our award-winning C280 and C350 4MATIC™ models provide an extra measure of handling confidence.

4MATIC™ permanent all-wheel drive can make a performance difference you'll feel, regardless of rain, snow, slush or ice. The 4MATIC™ system is fully automatic: It's always engaged and always sending torque to every wheel. 4MATIC™ is integrated with our standard Electronic Stability Program (ESP®), which maximizes its effectiveness at all times.

Feel added confidence knowing 4MATIC™ incorporates our 4-wheel Electronic Traction System (4-ETS). If one or more wheels start to slip, the system will apply precisely measured braking to help ensure that power goes to the wheel or wheels with traction, or reduce excess engine torque, until control is regained. In every possible condition, 4MATIC™ models demonstrate their strengths as all-weather performers.



No system, no matter how sophisticated, can repeal the laws of physics or overcome careless driving. Best performance in snow is obtained with winter tires. Please always wear your seat belt.

Intelligent safety. Peace of mind.

AIR BAGS AND BELT SYSTEM

The C-Class is fitted with selective front, side and window curtain air bags, all of which are activated in accordance with the type and severity of a collision. In the event of a frontal collision the electronics deploy the front air bags in two stages, depending on the severity of the accident, offering the front occupants an appropriate level of protection. The side air bags provide increased protection for the chest area, while the window curtain air bags offer protection for the head, expanding like a curtain between the A and C-pillars. Seat belt tensioners on the front and on the outer rear seats pull the belts against the body in fractions of a second in the event of a frontal or rear-end collision of a specific severity. (1)

BAS

The Brake Assist System (BAS) recognizes emergency braking by the speed at which you apply the brake pedal. When emergency braking is detected, BAS instantly applies full brake pressure. BAS is integrated with the Electronic Stability Program (ESP®) and works in concert with ABS to bring your vehicle to a standstill as quickly as possible, without locking up the wheels. This compensates for a driver's tendency to apply less brake pressure than necessary in panic situations. (2)

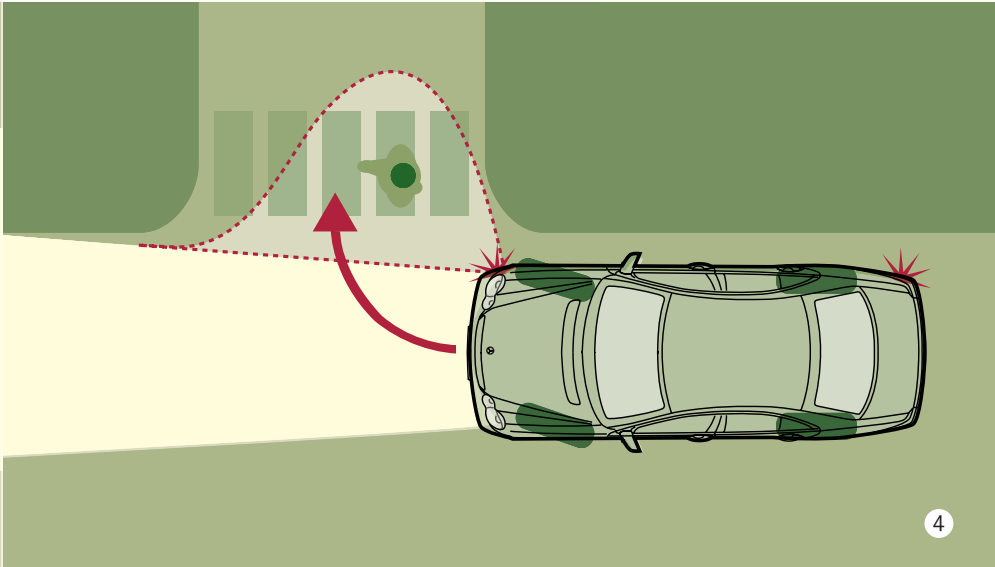
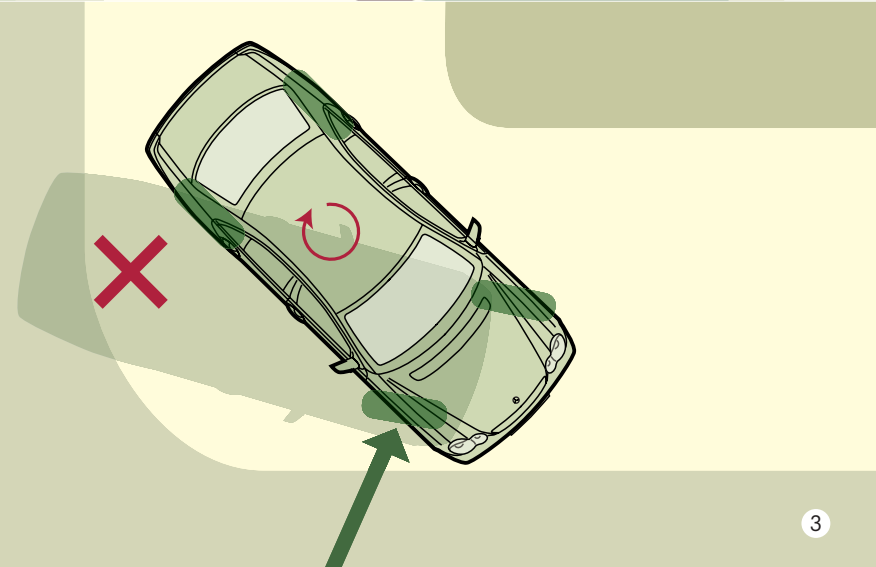
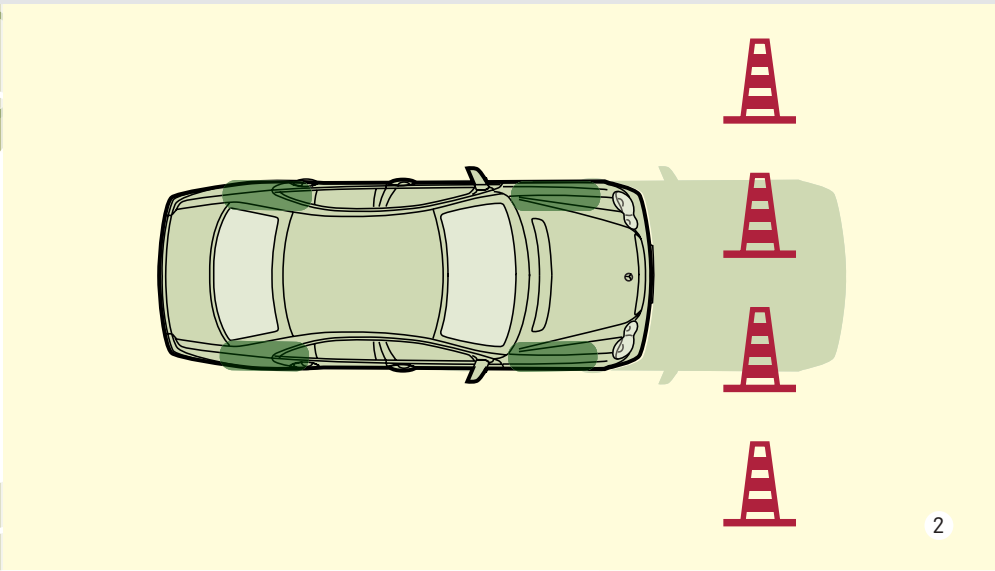
ESP®

The C-Class is always thinking. If danger of skidding occurs, whether in poor weather or challenging road conditions, the Electronic Stability Program (ESP®) is instantly activated. The sensors will recognize critical handling situations at an early stage, and instantly throttle back the engine torque and brake on one or more wheels as required, in order to stabilize the vehicle. (3)

CORNERING LIGHT FUNCTION

Truly visionary technology, the C-Class' cornering light function (as part of the optional Bi-Xenon Headlamps Package on the C230 and C280 Sedans) ensures that pedestrians and potential obstacles can be detected at an early stage of cornering. Once the turn indicator is engaged and the steering wheel reaches a specific angle, one of the foglamps is activated, illuminating a broad area alongside and in front of the vehicle. Headlamp Assist, the standard-fitted light sensor, automatically activates the headlamps when it starts to get dark, and in the rain or snow. (4)



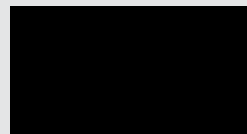




C230 Sedan shown with optional Bi-Xenon Headlamps Package.



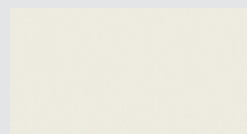
NON-METALLIC PAINTS



040 Black

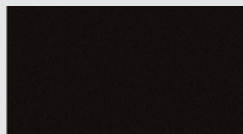


590 Mars Red



650 Calcite White

METALLIC PAINTS



197 Obsidian Black



300 Periclase Green



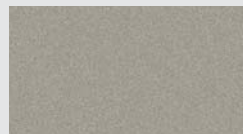
345 Orion Blue



359 Capri Blue



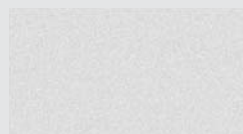
544 Barolo Red



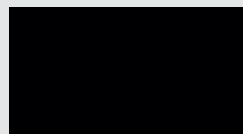
723 Pewter Silver



747 Granite Grey



775 Iridium Silver



768 Diamond Black



	ARTICO LEATHER			LEATHER			
	Black	Pebble Beige	Alpaca Grey	Charcoal	Blue	Stone	Alpaca Grey
NON-METALLIC PAINTS							
Black	●	●	●	●	-	●	●
Mars Red	●	○	○	●	-	○	○
Calcite White	●	○	●	●	●	○	●
METALLIC PAINTS							
Obsidian Black	●	●	●	●	-	●	●
Periclase Green	●	●	○	●	-	●	○
Orion Blue	●	-	○	●	-	-	○
Capri Blue	●	●	●	●	●	●	●
Barolo Red	●	●	●	●	-	●	●
Pewter Silver	●	●	●	●	-	●	●
Granite Grey	●	○	●	●	●	○	●
Iridium Silver	●	●	●	●	●	○	●
Diamond Black	●	-	●	●	-	-	●

● Recommended ○ Possible - Not recommended

ARTICO LEATHER¹



141 Black



145 Pebble Beige



148 Alpaca Grey

LEATHER²



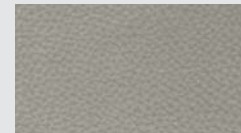
211 Charcoal



212 Blue



215 Stone



218 Alpaca Grey

WOOD



High Gloss Laurel



Black Bird's Eye Maple

TOUGHER CLEAR COAT

The clear coat used on the C-Class is significantly more scratch - resistant than conventional paint and is characterized by a more durable sheen which is noticeably more intense. The secret of this protective coat is to be found in the countless tiny ceramic particles (each less than one millionth of a millimetre in size) which are integrated in the paint binding agent. Both non-metallic and metallic paint finishes benefit from the more scratch-resistant clear coat which makes them less susceptible to the effects of the weather and environmental conditions such as precipitation, sunlight, temperature variations, dust and soot.

¹Man-made leather. ²Optional on C280 and C350 Sedans.

INDIVIDUAL EQUIPMENT (SELECTION)

	C230	C280	C280 4MATIC™	C350	C350 4MATIC™
TRANSMISSION					
5-speed automatic transmission	-	-	●	-	●
6-speed manual transmission	●	-	-	●	-
7G-TRONIC 7-speed automatic transmission	○	●	-	○	-
TRACTION/STABILITY					
Brake Assist System (BAS)	●	●	●	●	●
DIRECT CONTROL suspension and power steering with safety steering column	●	●	●	●	●
Electronic Stability Program (ESP®)	●	●	●	●	●
AUDIO/COMMUNICATION					
CD player with AM/FM/weatherband radio	●	●	●	●	●
Cellular telephone pre-wiring	○ ¹	○ ²	○ ²	○ ²	○ ²
COMAND APS with navigation	-	○	○	○	○
EXTERIOR					
16" aluminium-alloy wheels	●	●	●	-	●
17" aluminium-alloy wheels	○ ³	-	-	●	-
Auto-dimming mirrors (rearview and driver's side)	○ ³	●	●	●	●
Clear-lens foglamps	●	●	●	●	●
Electrically adjustable heated exterior mirrors with turn signal indicators	●	●	●	●	●
Power-tilt/sliding glass sunroof	○	○	○	●	●
Rain-sensing windshield wipers with heated windshield washer system	●	●	●	●	●
SmartKey remote	●	●	●	●	●
Tinted glass	●	●	●	●	●

INDIVIDUAL EQUIPMENT (SELECTION)

	C230	C280	C280 4MATIC™	C350	C350 4MATIC™
INTERIOR					
ARTICO leather upholstery	●	●	●	●	●
Heated front seats	○	●	●	●	●
High gloss wood trim	●	●	●	●	●
Illuminated visor vanity mirrors	●	●	●	●	●
Integrated garage door opener	-	●	●	●	●
ISOFIX child seat mounts	●	●	●	●	●
Leather upholstery	○ ⁴	○	○	○	○
Manually adjustable steering column for height and reach	●	●	●	-	-
Power-tilt/telescoping steering column	-	○ ³	○ ³	●	●
Power windows, with one-touch express-up/down	●	●	●	●	●
Split folding rear seats	-	●	●	●	●
THERMATIC automatic climate control	●	●	●	●	●
Trunk pass-through with ski sack	-	●	●	●	●
SAFETY					
Anti-theft alarm system	○	○	○	○	○
Belt tensioners with belt force limiters, front and outer rear seats	●	●	●	●	●
Dual-front, side and window curtain air bags	●	●	●	●	●
TeleAid Emergency Calling System ⁵	○	○	○	○	○

● Standard ○ Optional - Not available

PREMIUM PACKAGES

	C230	C280	C280 4MATIC™	C350	C350 4MATIC™
C230 Sedan: Power-tilt/sliding glass sunroof. Heated front seats. Auto-dimming mirrors (rearview and driver's side).	○	-	-	-	-
C280 Sedans: Power-tilt/sliding glass sunroof. 10-way power adjustable front seats with power steering column and 3-position memory function. harman/kardon® LOGIC7® surround sound system with 6-disc CD changer.	-	○	○	-	-
C350 Sedans: Leather upholstery. harman/kardon® LOGIC7® surround sound system with 6-disc CD changer. Rear window sunshade.	-	-	-	○	○

● Standard ○ Optional - Not available

OPTION PACKAGES

	C230	C280	C280 4MATIC™	C350	C350 4MATIC™
harman/kardon® Sound System Package: harman/kardon® LOGIC7® surround sound system with 6-disc CD changer.	○	○	○	○	○
Bi-Xenon Headlamps Package: Bi-Xenon headlamps with washers and cornering lights.	○	○	○	●	●
Sport Package: 17" 6-spoke aluminium-alloy wheels. Upgraded sport suspension and brakes. Front sport seats. AMG Styling Package (body kit, rear lip spoiler, stainless steel dual exhaust pipes). Manual transmission short shifter. Blue-tinted glass. Black Bird's Eye Maple wood trim. Sport steering wheel. Studded stainless steel pedals.	○	-	-	●	-

¹Only in conjunction with the harman/kardon® Sound System Package. ²Only in conjunction with the harman/kardon® Sound System Package or with the Premium Package. ³Available as part of an Optional Package. ⁴Only available in conjunction with the Sport Package. ⁵First year's monitoring provided at no cost with subscription. Subscription is required for service to be active. TeleAid operates only where cellular and Global Positioning system coverage is available.



C230 Sedan shown with optional Sport Package.



Sport from the inside out.

On the C230 Sedan, the optional Sport Package is as broad as it is precise. Incredibly responsive sport suspension and staggered tires (225/45 at the front and 245/40 at the rear) provide exhilarating cornering and handling. The AMG body kit includes stainless steel AMG-style dual exhaust tailpipes and 17" 6-spoke sport wheels. Of course, sport should mean more than just rapid acceleration, which is why the package includes a sport braking system with perforated brake discs designed to bring the car to a standstill quickly – from any speed.

The sporty theme is just as prominent once you step inside. Specially designed seats provide perfect support for the driver and front passenger, particularly on challenging curves. The seats are upholstered in ARTICO leather¹! Black Bird's Eye Maple wood trim adds a well-appointed finishing touch.

When you want to put your foot down, there are studded pedals in brushed stainless steel and, for your hands, a 3-spoke leather-wrapped multifunction sport steering wheel.

¹Man-made leather



C280 Sedan.



If there's still not enough space, consider an extension?

A variety of attractive and practical accessories are available for the C-Class. You can pick and choose the ones that fit your lifestyle to make your C-Class your own.



iPod® Integration Kit

You've spent time carefully filling your iPod® with the great music you love. Now you can enjoy every minute of every song as you cruise in your C-Class, courtesy of the iPod® Integration Kit.



17" "Celaeno" 7-twin spoke light-alloy wheels

How about some sporty footwear for your C-Class? These 225/45 R 17 light-alloy wheels and rims will complement an already stylish exterior package.



Roof box

The Mercedes-Benz roof box offers 330 litres of extra storage space and has an eye-catching design as well.



Roof rack

The Alustyle ski and snowboard rack is incredibly practical. It holds up to 4 pairs of skis or 2 snowboards.

	C230	C280	C280 4MATIC™	C350	C350 4MATIC™
Engine type	DOHC 24-valve 90° V-6	DOHC 24-valve 90° V-6	DOHC 24-valve 90° V-6	DOHC 24-valve 90° V-6	DOHC 24-valve 90° V-6
Total displacement	2,496-cc	2,996-cc	2,996-cc	3,498-cc	3,498-cc
Net power	201 hp @ 6,200 rpm	228 hp @ 6,000 rpm	228 hp @ 6,000 rpm	268 hp @ 6,000 rpm	268 hp @ 6,000 rpm
Net torque	181 lb-ft @ 2,700-5,000 rpm	221 lb-ft @ 2,700-5,000 rpm	221 lb-ft @ 2,700-5,000 rpm	258 lb-ft @ 2,400-5,000 rpm	258 lb-ft @ 2,400-5,000 rpm
Compression ratio	11.2:1	11.1:1	11.1:1	10.7:1	10.7:1
Acceleration, 0-100 km/h ¹ , manual/automatic transmission	8.4/8.9 seconds	n/a/7.2 seconds	n/a/7.6 seconds	6.4/6.4 seconds	n/a/6.9 seconds
Approximate top speed ²	250 km/h	250 km/h	250km/h	250 km/h	250 km/h
Tires, front rear	205/55 R 16 205/55 R 16	205/55 R 16 205/55 R 16	205/55 R 16 205/55 R 16	225/45 R 17 245/40 R 17	205/55 R 16 205/55 R 16
Fuel economy ³ , city/highway estimate	12.1-8.5 L/100 km	10.9-7.6 L/100 km	12.1-8.2 L/100 km	11.7-7.5 L/100 km	12.5-9.1 L/100 km
Fuel tank capacity	62.0 litres (8.0 litres reserve)	62.0 litres (8.0 litres reserve)	62.0 litres (8.0 litres reserve)	62.0 litres (8.0 litres reserve)	62.0 litres (8.0 litres reserve)
Fuel requirement	Premium unleaded gasoline	Premium unleaded gasoline	Premium unleaded gasoline	Premium unleaded gasoline	Premium unleaded gasoline
Dimensions ⁴ : Wheelbase Overall length Overall height Overall width	106.9 in/2,715 mm 178.2 in/4,526 mm 56.1 in/1,426 mm 68.0 in/1,728 mm	106.9 in/2,715 mm 178.2 in/4,526 mm 56.1 in/1,426 mm 68.0 in/1,728 mm	106.9 in/2,715 mm 178.2 in/4,526 mm 56.1 in/1,426 mm 68.0 in/1,728 mm	106.9 in/2,715 mm 178.4 in/4,531 mm 56.1 in/1,426 mm 68.0 in/1,728 mm	106.9 in/2,715 mm 178.2 in/4,526 mm 56.1 in/1,426 mm 68.0 in/1,728 mm
Track, front rear	59.3 in/1,505 mm 58.1 in/1,476 mm	59.3 in/1,505 mm 58.1 in/1,476 mm	59.3 in/1,505 mm 59.3 in/1,505 mm	59.3 in/1,505 mm 58.1 in/1,476 mm	59.3 in/1,505 mm 58.1 in/1,476 mm
Coefficient of drag	0.27	0.27	0.27	0.27	0.27
Curb weight	3,450 lb/1,565 kg	3,460 lb/1,570 kg	3,650 lb/1,656 kg	3,495 lb/1,585 kg	3,685 lb/1,671 kg
Trunk capacity	12 cu ft/340 litres	12 cu ft/340 litres	12 cu ft/340 litres	12 cu ft/340 litres	12 cu ft/340 litres

¹Stated rates of acceleration are based upon manufacturer's track results and may vary depending upon model, environmental and road surface conditions, driving style, elevation and vehicle load.

²Electronically limited. ³These estimates are based on the Government of Canada's approved criteria and testing methods. The actual fuel consumption of this vehicle may vary. Refer to the *Fuel Consumption Guide*. ⁴Dimensions shown are for models with standard equipment.

Mercedes-Benz Customer Care

24-hour Roadside Assistance

During the basic warranty coverage of 48 months and the time duration of the optional Extended Limited Warranty, Mercedes-Benz Roadside Assistance will be at your service. We'll bring you some gas, replace a flat tire with your spare, or jumpstart your car. In the event of a mechanical breakdown, if attempts by our Roadside Assistance technician have not made your vehicle safely operable, towing service will be provided to the nearest Mercedes-Benz dealership. Assistance is available 24 hours a day, every day, to anyone driving a Mercedes-Benz anywhere in Canada or the continental U.S.¹

Wear and tear coverage

For 24 months or 40,000 km (whichever comes first) many items normally considered "wear and tear," such as light bulbs, brake pads and discs, are covered. If necessary, an authorized Mercedes-Benz dealer will replace these parts at no charge to you.

Customer service

Owning a Mercedes-Benz means that when you have a question, we're here to help. Customer Service is open from 9 a.m. to 5 p.m. EST, Monday through Friday, and is staffed with knowledgeable Mercedes-Benz people who can talk you through the finer points of working your car's audio system – or even assist you in locating the nearest Mercedes-Benz dealership. Just call 1-800-387-0100. It's that simple.

Mercedes-Benz warranties

The Mercedes-Benz New Car Limited Warranty covers defects in materials or workmanship for 48 months or 80,000 km, whichever occurs first. To widen your window of confidence, you can opt for a Mercedes-Benz Extended Limited Warranty as well.²

Trip interruption reimbursement

If a breakdown covered by your New Car Limited Warranty occurs more than 80 km from your home, leaves your Mercedes-Benz vehicle inoperable or unsafe to drive, and requires overnight repairs, we've got you covered. You will be reimbursed up to \$500 for hotel accommodations and up to \$600 for alternate travel expenses per incident while your car is being repaired at an authorized Mercedes-Benz dealership.

Log on to learn more

mercedes-benz.ca

Looking for more Mercedes-Benz information? Visit mercedes-benz.ca to open an online window to Mercedes-Benz Canada. Get information about any model, including financing and leasing options, upcoming vehicles, or purchase Mercedes-Benz the Collection gifts and personal accessories. Our website also offers details about the Mercedes-Benz Extended Limited Warranty, Customer Care, and the history of Mercedes-Benz.



¹ Vehicle must be accessible from main roads. Roadside Assistance may involve charges for parts, service and towing. Depending on the circumstances, these services may be provided by an outside service provider, courtesy of Mercedes-Benz Roadside Assistance. For full details of the Roadside Assistance Program, please see your dealer. ² Please see your dealer for warranty details as well as for terms, conditions and pricing for extended warranty options.

© 2006 Mercedes-Benz Canada Inc. Marketing Communications.

All illustrations and specifications contained in this brochure are based on the latest product information available at the time of publication.

Mercedes-Benz reserves the right to make changes at any time, without notice, in colours, materials, equipment, specifications and models.

Any variations in colours shown are due to reproduction variations of the printing process. Illustrations may include test situations.

Some vehicles may be shown with non-Canadian equipment. Some vehicles are shown with optional equipment.

harman/kardon and LOGIC7 are registered trademarks of Harman International Industries Inc. iPod is a registered trademark of Apple Computer, Inc.

Printed in Canada

MBC-06-C07-13

Mercedes-Benz Canada Inc. 98 Vanderhoof Avenue. Toronto, Ontario M4G 4C9

1-800-387-0100

www.mercedes-benz.ca

C230 Sedan with optional Sport Package shown on cover.