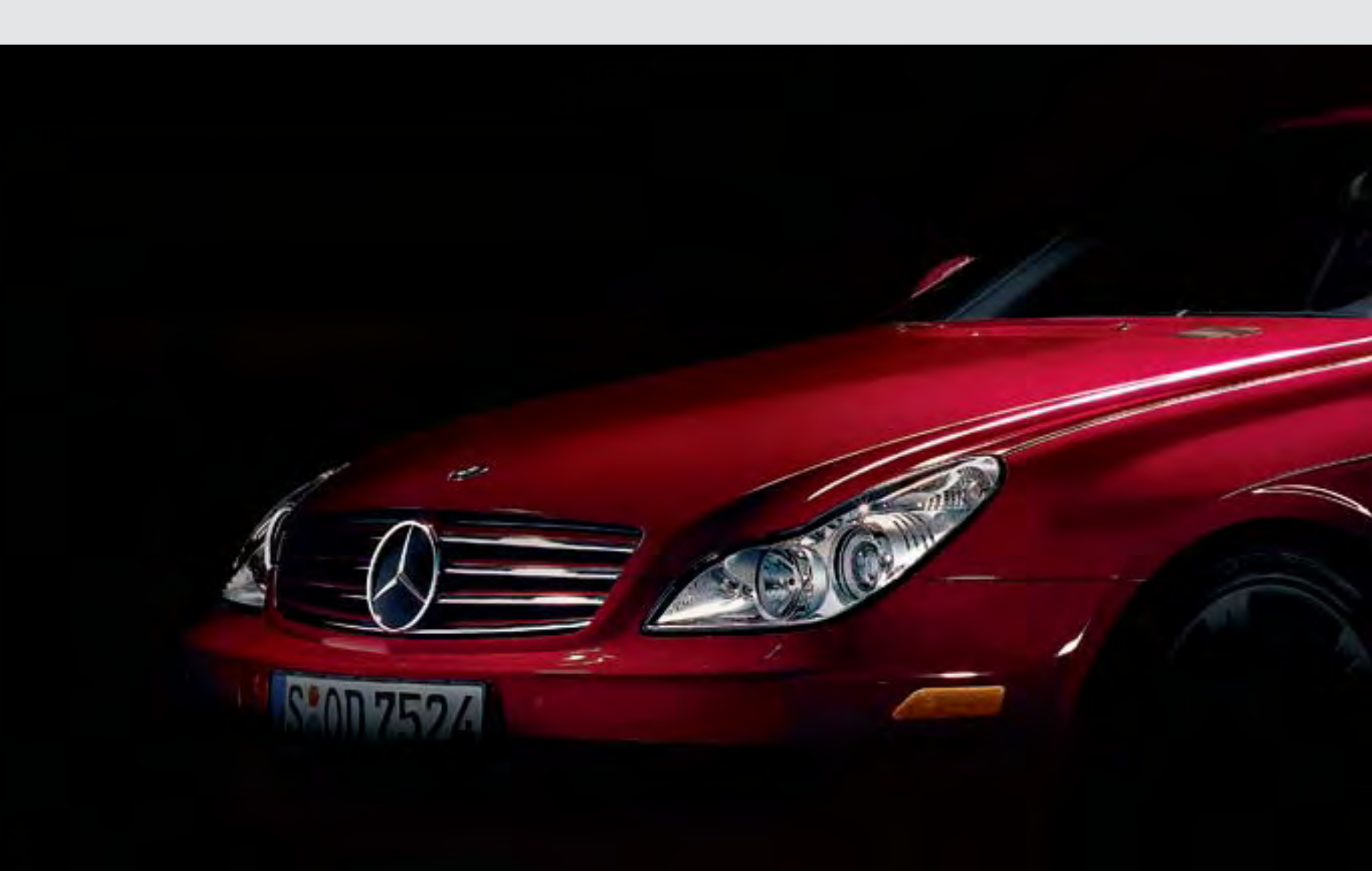




## THE 2007 CLS-CLASS



Mercedes-Benz





Words just get in the way.

## The CLS-Class

### DESIGN

Exterior design 4

---

### COMFORT

Interior comfort 6

---

### DYNAMICS

Ride comfort 10

Engine 12

Transmission 14

Active Bi-Xenon headlamps 16

---

SAFETY – PRO-SAFE™ 18

---

### PERFORMANCE

AMG 20

---

### COLOURS AND MATERIALS

*designo* 24

Combination options 26

Paint, upholstery and trim 27

---

### EQUIPMENT

Equipment listing 28

Accessories 31

---

### TECHNICAL FEATURES

Technical data 32

---

### SERVICE AND SUPPORT

Customer care and website 33

---





*CLS550 shown with optional Premium Package.*



*CLS550 shown with optional PARKTRONIC.*



## Seduction only takes a moment.

You may not realize it, but attraction is everything. It only takes 3 seconds to draw you in. Laying your eyes on the CLS-Class for the first time is a perfect example. Second 1: The curved L-shaped headlamps of the new Mercedes-Benz face sparkle, grabbing your attention. Second 2: You cast your gaze across the rest of the CLS-Class and are struck by the contrast between the restrained sides and the dynamic curve of the arching roof. Second 3: You take a step back and realize you have been taken in by the CLS-Class. The car is like nothing you have seen before. It's an attractive combination of a coupe and a four-door sedan. Second 4: It's all over, and the CLS-Class has won.

## Peace comes from within.

You feel a sense of overwhelming well-being as you settle into the driver's seat of the CLS-Class. It's only natural. Ergonomically formed for optimum comfort and support, the seats in the CLS-Class help you make the most of its sporty credentials. We know that no two people have exactly the same build. That's why the front seats are equipped with a 10-way electrical adjustment system which allows them to be configured to provide the ideal position, cushion height, inclination and longitudinal setting for each front occupant.

It may be hard to believe, but the backseat is as comfortable as the front. Stylish and roomy, the two individual rear bucket seats are extremely accommodating and relaxing to sit in. Fine, premium leather upholstery entices you to linger and appreciate the superb comfort of the supportive seat structure and head restraints. Generous amounts of legroom only add to the experience. So make the most of your time in the back. You never know when you'll get your next chance to sit there.









*CLS550 shown with optional PARKTRONIC.*



## Our features are more refined.

The THERMOTRONIC automatic climate control system allows all the occupants of the vehicle to set their own individual temperature and airflow preferences. Sensors continuously monitor the interior temperature and insulation level, adapting the blower speed as required. The optional Climate Comfort front seats feature fans arranged in the seat and backrest padding to evenly distribute warm or cool air under the leather upholstery. Since each seat is controlled separately, every journey is experienced in perfect comfort.

The steering wheel and selector lever in the CLS550 are finished in exquisite leather with a heated rim as standard<sup>1</sup>. The dashboard is embellished with fine wood trim – the largest single piece in any Mercedes-Benz vehicle. The centre console features the COMAND APS with navigation that uses the Global Positioning System (GPS). A voice or direction arrows in the display will guide you to your destination. When you aren't using the voice direction feature on your navigation system, the standard 420-watt harman/kardon<sup>®</sup> LOGIC7<sup>®</sup> surround sound system gives you unparalleled sound quality from every seat with 12 precisely-placed loudspeakers.



The COMAND APS system with navigation is an exceptional feature that will help you get from point A to point B effortlessly.

<sup>1</sup>Steering wheel shift paddles are available with the optional AMG Sport Package.

## We like to keep you in suspense.

What kind of ride would you like your CLS-Class to have – one that maximizes its sporty handling potential or one which puts the emphasis on comfort? With the AIRMATIC DC air suspension system, you can make your choice at the touch of a button. Instead of conventional coil springs, an electronic system adjusts the setting of the air springs by using compressed air to create a harder or softer set-up to suit the given situation. If the sensors register sporty driving, the comfortable basic suspension automatically becomes firmer. Spring rates and damping can also be adjusted manually.

The AIRMATIC DC air suspension system also includes the Adaptive Damping System. The fully automatic electronics operate with four different damping stages which adjust the damping force at each wheel as required at any given moment. The result: The ride is beautifully smooth and directional stability is not impaired by poor road surfaces.





*CLS550 shown with optional PARKTRONIC.*



*CLS550 shown with optional PARKTRONIC.*



## History has a way of repeating itself.

The world appreciates a well built car - one that has a history of integrity. It isn't well-known that the CLS-Class has a distinguished past. One of our most prestigious cars descends from a long line of champions, going all the way back to the 1930s. At its beginning, it was proclaimed the world's fastest. Not much has changed since then. At its heart, the CLS550 is a technological tour de force in the form of a new and powerful V-8 engine whose performance credentials are underlined by its superb sound.

The new V-8 engine impresses with its even-running characteristics and a mighty 391 lb-ft of torque. Its four valves per cylinder combined with the continuous camshaft adjustment on the inlet and exhaust sides produce the engine's mighty output of 382 hp, 80 hp over the previous engine. The 7G-TRONIC automatic transmission, a perfect match for this kind of power, will shift at a higher rpm when spirited driving is sensed, or glide smoothly to maximize fuel efficiency.

## Smooth operator.

The experience of a CLS-Class is unforgettable. There is no mistaking the smoothness of the ride. Imagine a car that lets you rule the road. In this four-door coupe, every trip becomes a real pleasure, whatever the distance. Best of all, wherever you go, we can guarantee it will be an easy drive.

Seven gear ratios provide a larger ratio spread and can react on the basis of smaller differences in engine speed. This produces faster shift operations which, in turn, make for smoother running and improved ride comfort. 7G-TRONIC employs the multiple downshift principle. This means that a number of gears can be skipped when shifting down. 7G-TRONIC also helps to reduce fuel consumption and emission levels. The added AMG SPEEDSHIFT enhancements on the CLS63 AMG offer even sportier gear changes along with shift paddles on the steering wheel.







*CLS550 shown with optional PARKTRONIC and dealer accessory wheels.*





## We have a few bright ideas.

Driving can be relaxing and exciting at the same time if the conditions are right. The lighting technology in the CLS-Class is designed to help create those conditions. Bi-Xenon headlamps with Active Light and Cornering Light functions are standard. The Active Light function moves the headlamp beams in concert with the driver's steering movements, thereby improving the illumination of curves and bends. The Cornering Light function provides additional illumination during cornering by turning on the right or left front foglamp when required. Furthermore, the side lights use LED technology for a highly-focused beam.

The high-performance light bulb used for the taillights have a longer service life and consume less electrical power than standard bulbs, while LED technology delivers a faster brake-light response. The headlamps are housed behind scratch-resistant polycarbonate lenses which are lighter than glass and less vulnerable to stone impacts.

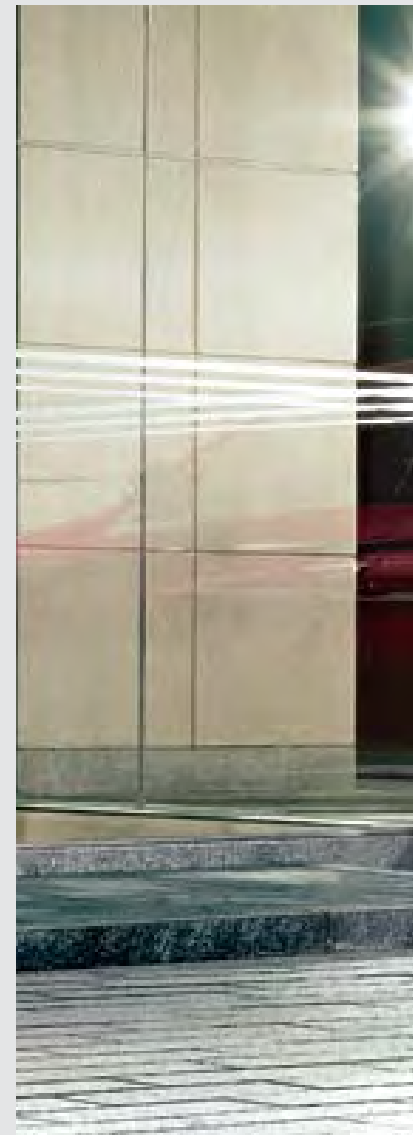
## Safety should always be standard.

Protection prior to and during critical situations with PRO-SAFE,™ the safety philosophy from Mercedes-Benz, does away with the traditional approach of separating the issue of safety into individual active and passive safety systems. Instead, we implement a forward-thinking, integrated safety philosophy.

As a part of PRO-SAFE,™ PRE-SAFE® is based on the principle that the valuable seconds between an accident risk being detected and the accident actually taking place should not be wasted. In critical moments, all safety features not only coordinate effectively, but quickly. For example, the ADAPTIVE BRAKE system helps to optimize other safety functions, such as our Electronic Stability Program (ESP®), traction control (ASR), anti-lock brakes and Brake Assist System (BAS).

Safety is a must in the CLS-Class. There are front, side and window curtain air bags to provide you with maximum safety.

If an accident should occur, the crash-responsive NECK-PRO head restraints for the driver and front passenger, as well as the front, side and window curtain air bags, can be activated in accordance with the type and severity of the impact. In the event of a frontal collision, intelligent sensors determine whether the impact is a minor one or more severe and adjusts the inflation of the two-stage front air bags accordingly. In a front or rear-end collision exceeding a specific threshold, belt tensioners on the front and back seats instantly pull the belts tight against the occupants. Rear side air bags also protect passengers in the back seats.





*CLS550 shown with optional PARKTRONIC.*



*CLS63 AMG.*



## Increasing your heart rate in under 4.5 seconds.

The CLS63 AMG: Out of sight in no time, but never out of mind when you get from 0 to 100 km/h in just 4.5 seconds<sup>1</sup>! This breathtaking performance created by the vehicle is propelled by the most powerful, naturally aspirated V-8 engine in its class at the present time. Its awe-inspiring data reads as follows: 507 hp and 465 lb-ft of torque. The 7G-TRONIC transmission with AMG SPEEDSHIFT programming makes for 35% faster gear changes and the three shift modes via aluminium shift paddles on the AMG sport steering wheel ensure that this formidable power is delivered instantaneously. The AMG sport suspension, based on the AIRMATIC DC system, and the AMG high-performance braking system with composite brake discs have been tuned accordingly.

Wherever the CLS63 AMG appears, its attractive AMG body-styling – featuring dynamic front and rear aprons, 19" 5-spoke AMG light-alloy wheels, side skirts and the two chromed twin tailpipes of the AMG sport exhaust system – is a magnet for envious glances. The AMG interior is covered in the finest Nappa leather in Black, Cashmere Beige or Alpaca Grey. AMG body-styling as well as 18" 5-twin spoke AMG light-alloy wheels can be specified as optional equipment for the CLS550.

Please see your dealer for details.

<sup>1</sup> Stated rate of acceleration is based upon manufacturer's track results and may vary depending upon model, environmental and road surface conditions, driving style, elevation and vehicle load.



*CLS550 shown with optional PARKTRONIC.*





## It's the little things that matter.

You never get a second chance to make a first impression, so follow your instincts and give your CLS the external finish and interior appointments you've always dreamed of. For a particularly individual touch, you can choose from the wide range of *designo* metallic paint finishes and leather colours. Settle back into the comfortable seats upholstered in the finest *designo* leather with decorative double topstitching. Cast your eyes over the roof lining which integrates harmoniously with the overall design concept (a soft Alcantara finish – in anthracite, for example, is available as an option). The *designo* trim elements in fine wood or stylish black piano lacquer complete a look that virtually transforms the car's interior. But there's no need to worry, it's still a CLS-Class – it's just that now it's more irresistible than ever. The *designo* appointments are available separately in any number of different combinations.

Please see your dealer for full details.





NON-METALLIC PAINTS



040 Black



650 Calcite White

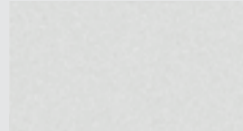
METALLIC PAINTS



189 Black Opal



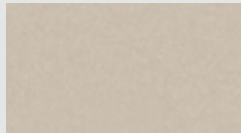
544 Barolo Red



775 Iridium Silver



197 Obsidian Black



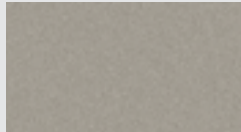
693 Desert Silver



963 Iridium Grey



300 Periclase Green



723 Pewter Silver



359 Capri Blue



747 Granite Grey

	LEATHER				NAPPA LEATHER				AMG NAPPA LEATHER		
	Black	Cashmere Beige	Sunset Red	Alpaca Grey	Black	Cashmere Beige	Sunset Red	Alpaca Grey	Black	Cashmere Beige	Alpaca Grey

NON-METALLIC PAINTS

Black	●	●	●	●	●	●	●	●	●	●	●
Calcite White	●	○	○	●	●	○	○	●	●	○	●

METALLIC PAINTS

Black Opal	●	●	-	●	●	●	-	●	●	●	●
Obsidian Black	●	●	●	●	●	●	●	●	●	●	●
Periclase Green	●	●	-	○	●	●	-	○	●	●	○
Capri Blue	●	○	-	●	●	○	-	●	●	○	●
Barolo Red	●	●	○	○	●	●	○	○	●	●	●
Desert Silver	●	●	○	-	●	●	○	-	●	●	-
Pewter Silver	●	-	●	-	●	-	●	-	●	-	-
Granite Grey	●	-	-	●	●	-	-	●	●	-	●
Iridium Silver	●	○	●	●	●	○	●	●	●	○	●
Iridium Grey	●	●	-	-	●	●	-	-	●	●	-

● Recommended    ○ Possible    - Not recommended

LEATHER<sup>1</sup>



201 Black



204 Cashmere Beige



207 Sunset Red

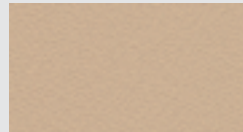


208 Alpaca Grey

NAPPA LEATHER<sup>2</sup>



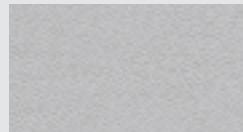
861 Black



864 Cashmere Beige



867 Sunset Red

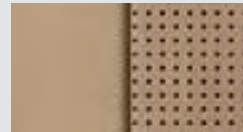


868 Alpaca Grey

AMG NAPPA LEATHER<sup>3</sup>



281 Black



284 Cashmere Beige



288 Alpaca Grey

WOOD



High Gloss Laurel



Burl Walnut

**Tougher clear coat**

The clear coat is significantly more scratch-resistant than conventional paint and is characterized by a more durable sheen which is noticeably more intense. Both non-metallic and metallic paint finishes benefit from the more scratch-resistant clear coat which makes them less susceptible to the effects of the weather and environmental conditions such as precipitation, sunlight, temperature variations, dust and soot.

<sup>1</sup>Standard equipment on CLS550. <sup>2</sup>Optional equipment on CLS550. <sup>3</sup>Standard equipment on CLS63 AMG.

<i>INDIVIDUAL EQUIPMENT (SELECTION)</i>	CLS550	CLS63 AMG
<b>TRANSMISSION</b>		
7G-TRONIC 7-speed automatic transmission	•	•
<b>TRACTION/STABILITY</b>		
ADAPTIVE BRAKE braking system with hill start assist	•	•
AIRMATIC DC suspension	•	•
Anti-lock braking system (ABS)	•	•
Brake Assist (BAS)	•	•
Electronic Stability Program (ESP®)	•	•
Speed-sensitive power steering	•	•
<b>AUDIO/COMMUNICATION</b>		
Cellular telephone preparation (MHI)	○	•
COMAND APS with navigation	•	•
harman/kardon® LOGIC7® surround sound system with 6-disc CD changer	•	•
LINGUATRONIC voice control <sup>1</sup>	○	○
<b>EXTERIOR</b>		
18" 5-spoke aluminium-alloy wheels	•	-
19" 5-spoke aluminium-alloy wheels	-	•
Active Bi-Xenon headlamps with washers and cornering lights	•	•
Auto-dimming mirrors (rearview & driver's side)	•	•
DISTRONIC	○	○
Electronically adjustable heated exterior mirrors with turn signal indicators	•	•
Power-tilt/sliding glass sunroof	•	•
Rain-sensing windshield wipers with heated windshield washer system	•	•

<i>INDIVIDUAL EQUIPMENT (SELECTION)</i>	CLS550	CLS63 AMG
Remote trunk release	•	•
Tinted glass	•	•
<b>INTERIOR</b>		
10-way power adjustable, heated front seats with 3-position memory	•	•
AMG Nappa leather upholstery	-	•
Climate Comfort front seats	○	○
Cruise control	•	•
Full-length centre console with storage	•	•
Heated steering wheel	•	-
Illuminated visor vanity mirrors	•	•
Integrated garage door opener	•	•
Interior Lighting Package	•	•
Leather upholstery	•	-
Leather-covered multifunction steering wheel and shift knob	•	•
Nappa leather upholstery	○	-
Outside temperature display	•	•
PARKTRONIC	○	○ <sup>2</sup>
Power-tilt/telescoping steering column	•	•
Power windows, with one-touch express-up/down	•	•
THERMOTRONIC automatic climate control	•	•
Wood trim	•	•

• Standard    ○ Optional    - Not available

**INDIVIDUAL EQUIPMENT (SELECTION)**

	CLS550	CLS63 AMG
<b>SAFETY</b>		
3-point seat belts (four), height-adjustable in front, with automatic height adjustment in rear	●	●
Anti-theft alarm system	●	●
Belt tensioners with adaptive belt force limiters for driver and front passenger, one-stage for rear seats	●	●
Central locking with interior switch and crash sensor	●	●
Crash-responsive NECK-PRO head restraints for driver and front passenger	●	●
Dual front air bags, side impact air bags and window curtain air bags	●	●
First aid kit	●	●
ISOFIX child seat mounts	●	●
PRE-SAFE®	●	●
TeleAid Emergency Calling System <sup>3</sup>	●	●
Tire pressure loss warning system	●	●
Tire pressure monitoring system	○	○
● Standard    ○ Optional    – Not available		

**PREMIUM PACKAGES**

	CLS550	CLS63 AMG
<b>CLS550:</b>		
KEYLESS-GO. PARKTRONIC. Heated rear seats. Electronic trunk closer. Rear window sunshade. Trunk pass through with ski sack.	○	–
<b>CLS63 AMG:</b>		
KEYLESS-GO. PARKTRONIC. Heated rear seats. Electronic trunk closer. Rear window sunshade.	–	○

**OPTION PACKAGES**

	CLS550	CLS63 AMG
<b>AMG Sport Package:</b>		
AMG 18" 5-twin spoke light-alloy wheels. Performance tires. AMG Styling Package. Steering wheel shift paddles.	○	–
<b>Multicontour Seating Package:</b>		
Multicontour driver and front passenger seats.	○	●
<b>Wood Steering Wheel &amp; Shifter Package:</b>		
Leather/Burl Walnut wood steering wheel and shift knob.	○ <sup>4</sup>	–
● Standard    ○ Optional    – Not available		

<sup>1</sup>Only available in conjunction with cellular telephone preparation. <sup>2</sup>Only available as part of the Premium Package. <sup>3</sup>Subscription is required for service to be active. TeleAid operates only where cellular and Global Positioning System coverage is available. <sup>4</sup>Not available with the AMG Sport Package.



*CLS550.*



## A style unto your own.

Your CLS-Class should be tailor-made. Mercedes-Benz offers a wide range of elegant and practical accessories. From wheels to the iPod® Integration Kit, we create what we know is important to you. A Mercedes-Benz is never complete until it fits your lifestyle.



### 18" 7-spoke "Menket" light-alloy wheels

Design at its finest: The 7-spoke light-alloy wheels are available as an option exclusive to the CLS. Separately, you can pair these attractive rims with 245/40 R 18 tires on the front, and 275/35 R 18 tires on the rear.



### Ski rack

Driving to the slopes is now even more fun than skiing down them. Thanks to the new Alustyle ski and snowboard rack, you can take your hobbies with you safely. The standard version is designed to hold up to 4 pairs of skis or 2 snowboards while the luxury version can accommodate up to 6 pairs of skis or 4 snowboards.



### Travel bag

You can take Mercedes-Benz wherever you go with our new travel bag. It's perfect for the on-the-go traveler. This high-quality travel bag with trolley function is particularly spacious and well thought-out.



### iPod® Integration Kit

You've spent time carefully filling your iPod® with the great music you love. Now you can enjoy every minute of every song as you cruise in your CLS-Class, courtesy of the iPod® Integration Kit.

	<i>CLS550</i>	<i>CLS63 AMG</i>
Engine type	DOHC 32-valve 90° V-8	DOHC 32-valve supercharged 90° V-8
Total displacement	5,461-cc	6,208-cc
Net power	382 hp @ 6,000 rpm	507 hp @ 6,800 rpm
Net torque	391 lb-ft @ 2,800-4,800 rpm	465 lb-ft @ 5,200 rpm
Compression ratio	10.7:1	11.3:1
Acceleration, 0-100 km/h <sup>1</sup>	5.4 seconds	4.5 seconds
Approximate top speed <sup>2</sup>	250 km/h	250 km/h
Tires, front rear	245/45 R 18 245/45 R 18	255/35 R 19 285/30 R 19
Fuel economy, <sup>3</sup> combined city/highway estimate	15.6-9.9 L/100 km	17.5-11.1 L/100 km
Fuel tank capacity	80.0 litres (9.0-litre reserve)	80.0 litres (9.0-litre reserve)
Fuel requirement	Premium unleaded gasoline	Premium unleaded gasoline
Dimensions: <sup>4</sup> Wheelbase	112.4 in/2,854 mm	112.4 in/2,854 mm
Overall length	193.0 in/4,910 mm	193.0 in/4,910 mm
Overall height	54.7 in/1,390 mm	54.7 in/1,390 mm
Overall width	73.7 in/1,873 mm	73.7 in/1,873 mm
Track, front rear	62.5 in/1,587 mm 63.0 in/1,600 mm	62.9 in/1,599 mm 62.3 in/1,583 mm
Coefficient of drag	0.30	0.31
Curb weight	3,992 lb/1,810 kg	4,210 lb/1,910 kg
Trunk capacity	12.8 cu ft/362.5 litres	12.8 cu ft/362.5 litres

<sup>1</sup>Stated rates of acceleration are based upon manufacturer's track results and may vary depending upon model, environmental and road surface conditions, driving style, elevation and vehicle load.

<sup>2</sup>Electronically limited. <sup>3</sup>These estimates are based on the Government of Canada's approved criteria and testing methods. The actual fuel consumption of this vehicle may vary. Refer to the *Fuel Consumption Guide*. <sup>4</sup>Dimensions shown are for models with standard equipment.

# Mercedes-Benz Customer Care

## 24-hour Roadside Assistance

During the basic warranty coverage of 48 months and the time duration of the optional Extended Limited Warranty, Mercedes-Benz Roadside Assistance will be at your service. We'll bring you some gas, replace a flat tire with your spare, or jumpstart your car. In the event of a mechanical breakdown, if attempts by our Roadside Assistance technician have not made your vehicle safely operable, towing service will be provided to the nearest Mercedes-Benz dealership. Assistance is available 24 hours a day, every day, to anyone driving a Mercedes-Benz anywhere in Canada or the continental U.S.<sup>1</sup>

## Wear and tear coverage

For 24 months or 40,000 km (whichever comes first) many items normally considered "wear and tear," such as light bulbs, brake pads and discs, are covered. If necessary, an authorized Mercedes-Benz dealer will replace these parts at no charge to you.

## Customer service

Owning a Mercedes-Benz means that when you have a question, we're here to help. Customer Service is open from 9 a.m. to 5 p.m. EST, Monday through Friday, and is staffed with knowledgeable Mercedes-Benz people who can talk you through the finer points of working your car's audio system – or even assist you in locating the nearest Mercedes-Benz dealership. Just call 1-800-387-0100. It's that simple.

## Mercedes-Benz warranties

The Mercedes-Benz New Car Limited Warranty covers defects in materials or workmanship for 48 months or 80,000 km, whichever occurs first. To widen your window of confidence, you can opt for a Mercedes-Benz Extended Limited Warranty as well.<sup>2</sup>

## Trip interruption reimbursement

If a breakdown covered by your New Car Limited Warranty occurs more than 80 km from your home, leaves your Mercedes-Benz vehicle inoperable or unsafe to drive, and requires overnight repairs, we've got you covered. You will be reimbursed up to \$500 for hotel accommodations and up to \$600 for alternate travel expenses per incident while your car is being repaired at an authorized Mercedes-Benz dealership.

## Log on to learn more

[mercedes-benz.ca](http://mercedes-benz.ca)

Looking for more Mercedes-Benz information? Visit [mercedes-benz.ca](http://mercedes-benz.ca) to open an online window to Mercedes-Benz Canada. Get information about any model, including financing and leasing options, upcoming vehicles, or purchase Mercedes-Benz the Collection gifts and personal accessories. Our website also offers details about the Mercedes-Benz Extended Limited Warranty, Customer Care, and the history of Mercedes-Benz.



<sup>1</sup> Vehicle must be accessible from main roads. Roadside Assistance may involve charges for parts, service and towing. Depending on the circumstances, these services may be provided by an outside service provider, courtesy of Mercedes-Benz Roadside Assistance. For full details of the Roadside Assistance Program, please see your dealer. <sup>2</sup> Please see your dealer for warranty details as well as for terms, conditions and pricing for extended warranty options.

© 2006 Mercedes-Benz Canada Inc. Marketing Communications.

All illustrations and specifications contained in this brochure are based on the latest product information available at the time of publication.

Mercedes-Benz reserves the right to make changes at any time, without notice, in colours, materials, equipment, specifications and models.

Any variations in colours shown are due to reproduction variations of the printing process. Illustrations may include test situations.

Some vehicles may be shown with non-Canadian equipment. Some vehicles are shown with optional equipment.

harman/kardon and LOGIC7 are registered trademarks of Harman International Industries Inc. iPod is a registered trademark of Apple Computer, Inc.

Printed in Canada  
MBC-06-CLS07-13

Mercedes-Benz Canada Inc. 98 Vanderhoof Avenue. Toronto, Ontario M4G 4C9  
1-800-387-0100  
[www.mercedes-benz.ca](http://www.mercedes-benz.ca)

CLS550 with optional PARKTRONIC shown on cover.