

Introducing the
NEW TERRITORY



Go Further

SMART



SUSTAINABILITY



SAFE



QUALITY



First we invited you to drive it. Now we're inviting you to experience just how different the new Ford Territory feels.

From its superior craftsmanship, to its quietness and fit and finish, you'll feel a level of quality you would expect from Territory.

Feel what it's like to drive a Territory that's more fuel efficient and environmentally conscious than ever before. With smart new economical diesel and petrol engines, you can drive your way towards a better world.

Feel a new level of confidence inspired by Territory's state-of-the-art safety features and technologies, giving you and your family the security you deserve.

Feel what it's like to experience a vehicle with smart, intuitive technologies designed to connect you to your world and make even the most mundane journey more enjoyable.

Not only does the new Territory take you where you want to go, it sets you in motion from the moment you lay eyes on it. Experience cutting-edge style with intelligent design, in a vehicle that balances the functionality of a family car with the style of a premium SUV.



A compelling presence

| Born to be noticed. With a striking new design that embodies Ford's global Kinetic Design philosophy, the new Territory is bound to turn heads wherever it goes. |



Territory Titanium shown in Seduce.



Life with no limits

Functional and flexible, the smart new Territory endlessly adapts to your lifestyle, offering you the dynamic driving experience you want, the versatility you need and the style you desire.



Territory Titanium shown in Vanish.



An intelligent interior

What the exterior promises, the interior delivers. With a contemporary interior design and all the latest creature comforts and technologies on board, you can enjoy the new Territory's seamless combination of style and functionality.



Territory Titanium interior shown.



Territory Titanium shown in Havana with 3rd row seat folded down.

Spacious and flexible design

A trip away has never been easier. With a spacious cabin, clever storage solutions and flexible seating arrangements, the new Territory can easily adapt to your needs. Enjoy the generous boot space or simply transform the Territory into a true 7-seater.





Style comes with the Territory

The Territory has evolved. Its eye-catching new design features a prestigious front grille and dynamic styling, giving the vehicle unique energy on the road and a real presence in the driveway. So, you're sure to make a bold statement every time you get behind the wheel.



Territory Titanium shown in Vanish.



Kinetic Design.

The sleek new exterior incorporates Ford's Kinetic Design philosophy, demonstrated through its bold, dynamic lines and full, sculpted surfaces. This philosophy creates the illusion of 'energy in motion', even when the vehicle's standing still.



Eye catching detail.

The show-stopping new Territory features stylish projector headlights, high-tech LED front position lamps¹ and impressive 18" alloys wheels² with unique machined face finish. With detailing like this, you'll be the envy of your street.



Territory Titanium interior shown.

Sophisticated interior.

Travel in style in the new Territory's elegant interior. From the luxurious fabrics and organic lines to the chrome and satin finishes, the Territory's new interior reflects the vehicle's sleek, stylish exterior, while the ergonomically designed layout of the cockpit puts all the vehicle's essential features at your fingertips.

¹ Only available on Titanium models. ² 18" alloy wheels standard on TS and Titanium models. Wheels shown are standard on Titanium.



Satellite Navigation shown. Only available on Titanium models.

Technology comes with the Territory

Boasting a whole range of new innovative features, the new Territory is now smarter than ever. It's intuitively designed to make your life easier and more enjoyable, and once you try it you won't want to drive anything else.



Colour touch screen!

Control the key functions of your new Territory with ease using the advanced 8" colour touch screen! With user-friendly Bluetooth® mobile phone integration² and Satellite Navigation technologies, driving will feel like a whole new experience.



Advanced integration.

Listening to your favourite songs and keeping in touch with family and friends has never been easier. Territory's 8" colour touch screen¹ functions as the fully integrated interface for your iPod³, smart phone, MP3 or USB device, keeping you connected to your music and your life, wherever you go.



DVD Player⁴

The new Territory Titanium features a stylish roof mounted Alpine rear DVD system⁵. With theatre like viewing in the 2nd and 3rd row seats, it's perfect for keeping kids of all ages entertained during big trips. Even the longest journeys will fly by!



Electric Power Assisted Steering (EPAS).

Enjoy ultimate control in the new Territory with Electric Power Assisted Steering (EPAS). EPAS provides you with relative steering assistance based on driver effort, vehicle speed and road conditions, so you'll not only be able to manoeuvre with ease in the car park, you'll also experience more responsive and precise steering when driving at greater speeds.

1. Only available on TS and Titanium models. The TX model features a fully integrated 5.8" mono LCD screen. 2. Bluetooth® is a registered trademark of Bluetooth SIG Inc., and is used under licence. Customers should consult their Ford Dealer on the ability of their mobile phone handset to integrate with the Bluetooth® system prior to making a purchase decision. 3. iPod is a trademark of Apple Inc. 4. Only available on Titanium models. 5. Includes a 10.2" screen, 2 wireless headphones and remote control.



Territory Titanium shown in Edge.

Advanced diesel technology comes with the Territory

The new Territory's diesel engine is cutting-edge. It's cleaner, more economical and quieter than you'd imagine a diesel could be.



2.7L V6 Common Rail Turbo Diesel Engine.

Enjoy optimal performance and efficiency across the new Territory range with the new 2.7L V6 Common Rail Turbo Diesel Engine. Using common rail technology provides improved power, torque and fuel efficiency. This advanced diesel technology not only delivers reduced noise levels and CO₂ emissions, it also achieves outstanding fuel economy (8.2L/100km on Territory RWD models¹). When it comes to the new Territory diesel, there really are no compromises.



A smoother drive.

With improved fuel economy, surprising quietness and Territory's renowned handling, the new Territory diesel has the drivability you would expect in a petrol sedan and the fuel economy you would expect in a much smaller car. In fact, the only way people will know you're driving a diesel is from the badge on the back.

¹ Figure obtained from controlled tests using ADR 81/02 (combined). Actual fuel consumption may vary.



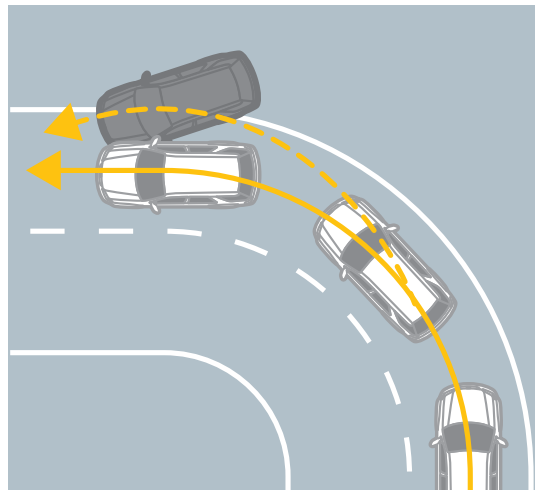
Safety comes with the Territory

Hidden underneath the sleek new exterior is a whole host of safety features so you can feel comfortable knowing that the new Territory has been engineered to help protect you and your family.



Reverse camera¹

In the new Territory, safety starts before you even leave the driveway. The reverse camera¹ automatically activates when the vehicle is engaged into reverse gear. The wide-angle fish eye lens gives a 130° view up to 10 metres behind the vehicle, giving you visibility and protection against things you wouldn't normally see.



Dynamic Stability Control with Rollover Mitigation.

Dynamic Stability Control (DSC) strengthens your connection to the road and helps you avoid the problems of oversteer and understeer. DSC tracks the vehicle's movement and then works in tandem with Traction Control and ABS to help keep the vehicle under control. Working in conjunction with DSC, the new rollover mitigation sensors help prevent rollovers caused by extreme lateral forces.



Territory TS shown in Lightning Strike.



Surrounded by Safety.

Enjoy peace of mind knowing the new Territory has a range of airbags, including dual stage driver and single stage front passenger, side curtain² and driver's knee airbag, to help keep you and your family protected in the event of an accident occurring.

ANCAP Safety rating.

With a host of safety features designed to look after you and your family, it's no wonder the new Territory has the maximum ANCAP 5-star safety rating.



1. Only available on TS and Titanium models. 2. For 1st and 2nd rows.



Territory TX

Available as 4.0L DOHC DI-VCT I6 Petrol RWD and 2.7L V6 Turbo Diesel AWD only

- 17" alloy wheels (set of four)
- 5.8" Monochrome LCD screen
- 5-Star ANCAP safety rating
- 6-Speed automatic transmission with Sequential Sports Shift
- 7 seat capacity
- Bluetooth® & mobile phone integration¹
- Cruise control
- Driver & front passenger, side curtain front and rear², and driver's knee airbag
- Dynamic Stability Control with Rollover Mitigation
- Electric Power Assisted Steering (EPAS)
- iPod³ and USB integration
- Reverse sensing system
- Single slot CD player

Territory TX shown in Smoke.

Territory TS

Available as 2.7L V6 Turbo Diesel RWD or AWD and 4.0L DOHC DI-VCT I6 Petrol RWD

All the features of the TX, plus:

- 18" alloy wheels (set of four)
- Dual zone climate control
- Leather wrapped steering wheel, Sequential Sports Shifter and park brake
- Premium interior Command Centre with 8" colour touch screen
- Premium single slot CD player with 150W amplifier and subwoofer
- Reverse camera
- Unique TS front bumper with fog lamps

Territory TS shown in Vanish.

Territory vehicle range

With a sleek new design, a host of new features and the choice of a petrol or diesel engine, the new Territory range is sure to offer a model that's perfectly suited to you and your lifestyle.



Territory Titanium

Available as 2.7L V6 Turbo Diesel AWD and 4.0L DOHC DI-I6 Petrol RWD

All the features of the TS, plus:

- 18" 5 Y-spoke design alloy wheels (set of four)
- Alpine rear DVD entertainment system⁴
- Leather trim
- Rear privacy glass⁵
- Unique Titanium front bumper with LED front lamps

Territory Titanium shown in Havana.



TX Territory Features:

- 2.7L V6 Turbo diesel engine (AWD)
- 4.0L DOHC DI-VCT I6 petrol engine (RWD)
- 6-speed automatic transmission with Sequential Sports Shift
- 17" alloy wheels (set of four)
- 7 seat capacity
- Airbags, including dual stage driver and single stage front passenger, driver's knee and side curtain airbags³
- Anti-lock Braking System (ABS) with Electronic Brakeforce Distribution (EBD) and Traction Control
- Bluetooth® mobile phone integration¹
- Cruise control
- Dynamic Stability Control (DSC) with Rollover Mitigation
- Electric Power Assisted Steering (EPAS)
- Emergency Brake Assist (EBA)
- Interior Command Centre with 5.8" LCD screen
- iPod² and USB integration
- Reverse sensing system
- Single slot CD player
- Single zone climate control

1. Bluetooth® is a registered trademark of Bluetooth SIG Inc., and is used under licence. Customers should consult their Ford Dealer on the ability of their mobile phone handset to integrate with the Bluetooth® system prior to making a purchase decision. 2. iPod is a trademark of Apple Inc. 3. For 1st and 2nd rows.

Territory TX

With its bold new design and impressive range of features, like *Bluetooth*^{®1} iPod² and smart phone integration, the new Territory TX has everything you'd hope for in a family car.



Territory TX AWD shown in Smoke.





Territory TS Features (in addition to TX):

- 2.7L V6 Turbo diesel engine (RWD and AWD options)
- 18" alloy wheels (set of four)
- Dual zone climate control
- Front fog lamps with chrome inner bezel
- Leather wrapped steering wheel, Sequential Sports Shifter and park brake.
- Lower and upper grilles with painted silver trim
- Premium audio single slot CD system with 150 watt amplifier and subwoofer
- Premium Interior Command Centre with 8" Colour Touch TFT screen
- Reverse parking camera
- Sunglasses holder incorporating reading lamps

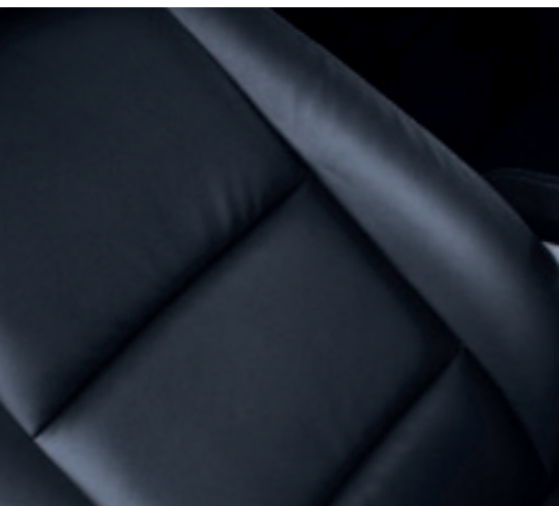
Territory TS

Building on the features of the TX model, the feature packed Territory TS has everything you could want and more. Enjoy cutting-edge technologies, all the latest creature comforts and a new elegant design.



Territory TS AWD shown in Vanish.





Territory Titanium Features (in addition to TS):

- 2.7L V6 Turbo diesel engine (AWD)
- 4.0L DOHC DI-VCT I6 petrol engine (RWD only)
- 18" 5 Y-spoke design alloy wheels (set of four)
- 6-way power driver's seat with 3-position memory
- Alpine rear DVD system¹
- Auto dimming rear vision mirror
- Body coloured front fender feature
- Leather seat trim
- LED front position lamps
- LED side mirror turn indicators
- Privacy glass²
- Satellite navigation system
- Unique Titanium front bumper

1. Includes a 10.2" screen, 2 wireless headphones and remote control. 2. For rear passengers and back windows.

Territory Titanium

Just when you thought it couldn't get any better, the Territory Titanium really is a class above the rest. With smart technology, smart interior styling and a smarter presence on the road, the Titanium leaves all others wanting.



Territory Titanium shown in Havana.





Winter White



Vanish



Edge



Seduce¹



Chill



Havana

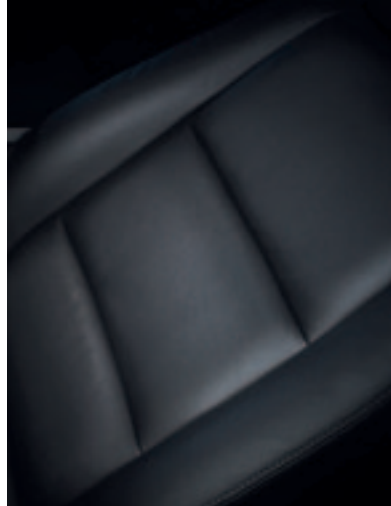
1. Seduce available on TS and Titanium models only. Territory Titanium shown for illustrative purposes.

Exterior colours and interior seat trims

Make the Territory your own. With a great range of stylish colours and trims, you can customise your new Territory so it's just right for you.



Lightning Strike

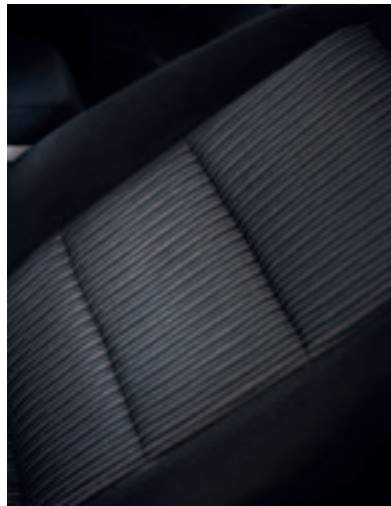


Titanium

Nudo Print Leather seat inserts in Shadow.



Silhouette



TS

Essence Shadow cloth trim seats with Miller suede feel Ebony bolsters.



Smoke



TX

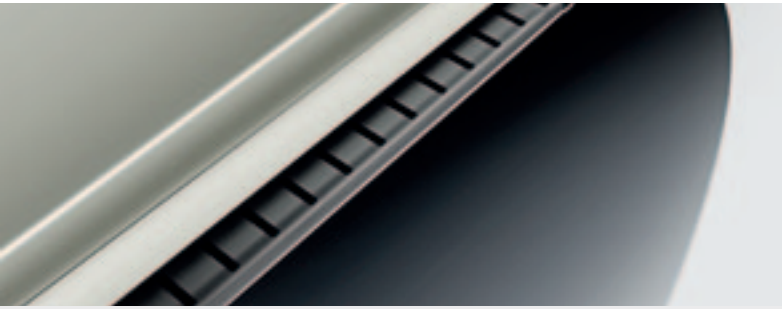
Momentum Medium Shadow cloth trim seats with Jacob Shadow bolsters.



Territory Titanium shown in Chill with accessory carry bars and bike carrier.

Personalise your Territory. The choice is yours.

The Ford Vehicle Personalisation accessory range lets you personalise your Territory to perfectly suit your needs.



Running Boards.

Made from strong, lightweight aluminium, the side steps provide easy access into the vehicle.



Carry Bars.

Carry up to 80kg of extra cargo with these lightweight aluminium carry bars. Strong and lockable, the bars can be easily installed and removed as needed.



Towpack - standard or heavy duty.

With a Genuine Ford towpack, towing big loads has never been easier. Great for boats and trailers, work and play. Please contact your authorised Ford Dealer for more information.



Bonnet Protector.

Look after your Territory with a bonnet protector, designed to help deflect stones and other objects. Available in a clear or tinted finish.

With a heap of accessory combinations to make your experience with the Territory even better, you truly can make the Territory your own. For any queries on the accessories available, please contact your local Ford Dealer.

Accessories

	TX	TS	Titanium
Exterior			
Bike carrier ¹	●	●	●
Bonnet protector	●	●	●
Canoe / Kayak carrier ¹	●	●	●
Carry bars	●	●	●
Dust deflector	●	●	●
Headlamp protectors	●	●	●
Mudflaps ²	●	●	●
Rear spoiler	●	●	●
Running boards	●	●	●
Ski carrier ¹	●	●	●
Towpack	●	●	●
Weathershields ³	●	●	●
Weathershields (Slimline) ⁴	●	●	●
Interior			
Boot protector ⁵	●	●	●
Cargo cover ⁵	●	●	●
Cargo swing net	●	●	●
Carpet mats	●	●	●
Pollen filter	●	●	●
Rubber mats	●	●	●
Scuff plates (Alloy or Sports)	●	●	●
Waterproof seat covers ⁶	●	●	●
Window shades ⁷	●	●	●
Safety			
Fire extinguisher	●	●	●
First aid kit	●	●	●
Safety triangle	●	●	●

1. Attaches to Genuine Ford carry bars (sold separately). 2. Front and rear sets sold separately. 3. Left and right front weathershields sold separately, rear weathershields sold as a set of two. 4. Front set only, sold as a set of two. 5. Not suitable when third row seats are in use. 6. Not available for third row seats. 7. Sold as a set of two (LH and RH) or set of three (LH, RH and tailgate)

Technical specifications

Engine type	Petrol	Diesel	
Applicable Models	4.0L DOHC DI-VCT I6	2.7L V6 Common Rail Turbo Diesel	
Max. power (DIN)	195kW @ 6,000rpm ¹	140kW @ 4,000rpm	
Max. torque (DIN)	391Nm @ 3,250rpm ¹	440Nm @ 1,900rpm	
Economy & emissions	RWD	RWD	AWD
Fuel tank capacity (litres)	75	75	
Combined fuel consumption - ADR 81/02 (L/100km - rounded) ²	TX	10.6	8.8
	TS	10.6	9.0
	Titanium	10.6	9.0
CO ₂ emissions (g/km) ²	249	217	TX and TS: 232 Titanium: 236
Fuel type (recommended)	Petrol 91-98RON		Diesel

Suspension

Front	Virtual Pivot Control Link front suspension
Rear	Control Blade Independent Rear Suspension

Brakes

Front	Vented disc brakes with twin piston caliper
Rear	Vented rotor with single piston caliper

Towing capacities (kg)

	RWD	RWD	AWD
Maximum towing capacity - unbraked	1,000	1,000	1,000
Maximum towing capacity - braked standard/heavy duty	1,600 ³ /2,300 ⁴	1,600 ³ /2,300 ⁴	1,600 ³ /2,700 ⁴
Rear gross axle load rating when towing	1,530	1,530	1,530

Kerb mass (kg)

	Petrol			Diesel			
	TX RWD	TS RWD	Titanium RWD	TX AWD	TS RWD	TS AWD	Titanium AWD
Kerb mass ⁵	2,042	2,011	2,085	2,187	2,049	2,149	2,167

Exterior dimensions (mm)

Overall length	4,883
Overall width (excluding mirrors)	1,898
Overall height	1,716
Wheelbase	2,843
Front track	1,626
Rear track	1,597
Front overhang	951
Rear overhang	1,089
Approach angle	22.6°
Departure angle	23.5°
Ground clearance	175

Interior dimensions (mm)

Front head room	1,043
Front leg room	1,048
Front hip room	1,525
Front shoulder room	1,548
2nd row head room	1,006
2nd row leg room	1,015
3rd row head room	926
3rd row leg room	859

Minimum turning circle (m)

Diameter kerb-to-kerb	11.4
-----------------------	------

Luggage capacity (L)

With 3rd row seats folded down	1,153L
--------------------------------	--------

Specifications

Engine & transmission	TX RWD	TX AWD	TS RWD	TS AWD	Titanium RWD	Titanium AWD
2.7L V6 Common Rail Turbo Diesel	-	S	S	S	-	S
4.0L DOHC DI-VCT I6 Petrol	S	-	S	-	S	-
6-speed automatic transmission with Sequential Sports Shift	S	S	S	S	S	S

Safety & security

Anti-lock Braking System	S	S	S	S	S	S
Central locking - all doors (including liftgate and rear glass)	S	S	S	S	S	S
Child proof locks - rear doors	S	S	S	S	S	S
Dynamic Stability Control with Rollover Mitigation	S	S	S	S	S	S
Electronic Brakeforce Distribution	S	S	S	S	S	S
Emergency Brake Assist	S	S	S	S	S	S
Grade Control Logic	S	S	S	S	S	S
Intelligent Safety System	S	S	S	S	S	S
Advanced restraints module	S	S	S	S	S	S
Beltminder™ system ⁶	S	S	S	S	S	S
Crash severity sensor	S	S	S	S	S	S

S = Standard. - = Not available.

1. Petrol power and torque figures measured using premium unleaded fuel (95 RON). 2. Figures obtained from controlled tests using ADR 81/02 combined cycle. Actual consumption will depend on many factors, including driving habits, prevailing conditions and your vehicle's equipment, condition and use. 3. 1,600kg is the maximum towing capacity using a Genuine Ford tow pack. To comply with these limits, occupants and/or luggage may need to be restricted. For further details regarding passenger and luggage restrictions, please consult your authorised Ford Dealer and/or refer to the Territory owner's manual under 'Trailer Towing' for further guidance.

Specifications (continued)

	TX RWD	TX AWD	TS RWD	TS AWD	Titanium RWD	Titanium AWD
Driver's knee airbag	S	S	S	S	S	S
Dual-stage driver and single stage front passenger airbags	S	S	S	S	S	S
Side curtain airbags ⁷	S	S	S	S	S	S
Driver's seat position sensor	S	S	S	S	S	S
Pyrotechnic seatbelt buckle pretensioners	S	S	S	S	S	S
Reverse sensing system	S	S	S	S	S	S
Reverse camera	-	-	S	S	S	S
Traction Control	S	S	S	S	S	S
Ride & handling						
17" x 7.5" alloy wheel (5 spoke) - P235/60 R17 tyres ⁸	S	S	-	-	-	-
18" x 7.5" alloy wheel (10 spoke) - P235/55 R18 tyres ⁸	-	-	S	S	-	-
18" x 7.5" alloy wheel (5 Y-spoke) - P235/55 R18 tyres ⁸	-	-	-	-	S	S
17" steel spare wheel - P235/60 R17 tyre	S	S	S	S	S	S
All Wheel Drive	-	S	-	S	-	S
Rear Wheel Drive	S	-	S	-	S	-
Control Blade Independent Rear Suspension	S	S	S	S	S	S
Virtual Pivot Control Link Front Suspension	S	S	S	S	S	S
Exterior features						
Body coloured bumpers, side mirrors and door handles	S	S	S	S	S	S
Front fog lamps	-	-	S	S	-	-
Front LED position lamps	-	-	-	-	S	S
Lower and upper grilles with chrome trim	-	-	-	-	S	S
Lower and upper grilles with painted silver trim	-	-	S	S	-	-
Privacy glass ⁹	-	-	-	-	S	S
Projector headlamps	S	S	S	S	S	S
Roof carry bar rails	S	S	S	S	S	S
Interior features						
Automatic headlamps ON/OFF feature	S	S	S	S	S	S
Cruise control with steering wheel mounted controls	S	S	S	S	S	S
Single zone climate control	S	S	-	-	-	-
Dual zone climate control	-	-	S	S	S	S
Electrochromatic rear vision mirror (auto-dimming)	-	-	-	-	S	S
Front and rear power windows	S	S	S	S	S	S
Front windscreen wipers with variable intermittent feature	S	S	S	S	S	S
Leather wrapped steering wheel, sequential sports shifter and park brake	-	-	S	S	S	S
Power adjustable side mirrors	S	S	S	S	-	-
Power adjustable side mirrors with LED turn lamps indicator	-	-	-	-	S	S
Rear tailgate remote release	S	S	S	S	S	S
Remote keyless entry with two remote control flip keys	S	S	S	S	S	S
Vanity mirror lamps for driver and front passenger	S	S	S	S	S	S
Instrumentation						
Interior Command Centre (ICC) with 5.8" LCD screen	S	S	-	-	-	-
Premium ICC with 8" Colour Touch TFT screen	-	-	S	S	S	S
Satellite Navigation System	-	-	-	-	S	S
Trip computer (Including: trip time, fuel used, average fuel economy, instantaneous fuel economy, average speed, distance to empty)	S	S	S	S	S	S
Seating						
7 seat capacity (with 3rd row seat)	S	S	S	S	S	S
2nd row flat fold seat capability	S	S	S	S	S	S
3rd row flat fold seat capability with 2nd row slide adjustment	S	S	S	S	S	S
4-way power adjustable driver's seat	S	S	S	S	-	-
6-way power adjustable driver's seat with 3-position memory	-	-	-	-	S	S
60/40 split fold-down 2nd row seat back	S	S	S	S	S	S
Adjustable driver's seat lumbar support	S	S	S	S	S	S
Adjustable passenger's seat lumbar support	-	-	-	-	S	S
Seat trim - cloth	S	S	S	S	-	-
Seat trim - leather appointed	-	-	-	-	S	S

4. 2,300kg is the maximum towing capacity of Territory RWD models. 2,700kg is the maximum towing capacity of Territory AWD diesel models. Maximum towing capacity using a Genuine Ford heavy duty tow pack with load levelling kit. To comply with these limits, occupants and/or luggage may need to be restricted. For further details regarding passenger and luggage restrictions, please consult your authorised Ford Dealer and/or refer to the Territory owner's manual under 'Trailer Capacities' for further guidance. 5. Approximate kerb (unladen) mass based on standard specification of a 7 seat model with a full tank of fuel and no occupants or luggage. 6. Driver and front passenger only. 7. For 1st and 2nd rows. 8. Set of 4. 9. For rear passengers and back windows.

Specifications (continued)

	TX RWD	TX AWD	TS RWD	TS AWD	Titanium RWD	Titanium AWD
Audio & Communication						
3 x auxiliary power sockets	S	S	S	S	S	S
3.5mm auxiliary audio input	S	S	S	S	S	S
Alpine rear DVD entertainment system with 10.2" screen, 2 wireless headphones and remote control	–	–	–	–	S	S
Bluetooth® mobile phone integration ¹⁰	S	S	S	S	S	S
iPod ¹¹ integration	S	S	S	S	S	S
Premium audio single slot CD system with 150 watt amplifier & sub-woofer	–	–	S	S	S	S
Single slot CD audio system with AM/FM radio	S	S	–	–	–	–
USB input facility for music files	S	S	S	S	S	S
1st row seat & door storage						
Front door expandable drink bottle holder x 2	S	S	S	S	S	S
Handbag compartment x 2	S	S	S	S	S	S
Lockable security drawer - under driver's seat	S	S	S	S	S	S
Map pocket x 2	S	S	S	S	S	S
2nd row seat & door storage						
Centre armrest cup holder x 2	S	S	S	S	S	S
Map pocket x 2	S	S	S	S	S	S
Rear door expandable drink bottle holder x 2	S	S	S	S	S	S
Seat pocket x 2	S	S	S	S	S	S
3rd row seat storage						
Armrest bin x 2	S	S	S	S	S	S
Cup holder x 2	S	S	S	S	S	S
Console						
Centre console bin with iPod ¹¹ holder	S	S	S	S	S	S
Console cup holder x 2	S	S	S	S	S	S
Removable rear rubbish bin	S	S	S	S	S	S
Tambour door compartment with trinket bin and tissue box holder	S	S	S	S	S	S
Instrument panel						
Glovebox	S	S	S	S	S	S
Rear & overhead						
Rear load floor compartment - small	S	S	S	S	S	S
Rear quarter trim compartment	S	S	S	S	S	S
Sunglasses holder incorporating reading lamps	–	–	S	S	S	S
Storage						
30 interior storage compartments	S	S	S	S	S	S
Other						
Cargo retention anchorages	S	S	S	S	S	S
Flat folding load floor	S	S	S	S	S	S
Jack/handle and wheel chock storage	S	S	S	S	S	S

S = Standard. – = Not available.

Making your ownership experience even more rewarding

A great car is just the beginning. After you've bought your new Territory, we support you with a wide range of services that aim to make you one of the most satisfied vehicle owners in New Zealand.



Territory Titanium shown in Smoke.

3 Year/100,000km Warranty¹

Covers your Territory against defects in factory materials or workmanship for the first 36 months or 100,000 kms – whichever comes first.

15,000 kms Service Intervals¹

Improved oil technology and engineering refinement has enabled Ford to offer normal scheduled service intervals of 15,000 kms or every 12 months, whichever comes first.

Ford Roadside Assistance¹

For the first 36 months or 100,000 kms – whichever comes first, Ford gives new Territory owners complete peace of mind motoring with New Zealand's most reassuring roadside emergency service. Free accommodation or a free rental car are just some of the outstanding features of this unique service.

Five Year Perforation Corrosion Warranty¹

Covers the original vehicle's body against perforation corrosion for the first five years of its life.

Ford Customer Assistance Centre

You'll always find us responsive to your needs. Telephone 0800 FORD NZ (0800 367 369).

Finance and Lease Options

Choosing how to finance your vehicle is a major decision and your Ford Dealer can offer you a range of options that can be tailored to suit your needs.

Fully maintained or non-maintained operating leases remove the worry of depreciation, inflation and more importantly do not tie up your capital in an asset. Other forms of financing are also available. Flexible deposits and repayment terms mean that a plan can be structured for your specific needs. See your Ford Dealer to discuss your financing or leasing requirements.

Ford Solutions

You deserve to have a worry-free journey every time you set off in your Ford. Ford Solutions provides you with a 'no problems' solution tailored to suit your lifestyle. The range of services includes:

- Motor Vehicle Insurance – Three levels of cover offer you hassle-free insurance coverage
- Guaranteed Asset Protection (GAP) Insurance - Provides cover for the 'gap' between the value of your insurance payout and the amount owing on your finance or lease agreement
- Lifestyle Protection Insurance – Helps protect your payments against unforeseen circumstances, such as redundancy, illness and death
- New Vehicle Extended Mechanical Breakdown Insurance - Acts as an extension of your original Ford warranty
- Extended Roadside Assistance – Extends the premium roadside assistance which is standard on new Ford vehicles

Simply call in and see your participating Ford Dealer today.

¹ Conditions apply. Further information on these warranties and services may be obtained from your Authorised Ford Dealer.

This brochure was designed to provide you with a general introduction to your Territory and was correct at time of going to print. However, Ford's policy is one of continuous product development. The right is reserved to change specifications, colours and prices of the models and items illustrated and described in this publication at any time. For the latest details always consult your Ford Dealer.



ford.co.nz