

# '73 Ford Torino

Gran Torino Brougham/Gran Torino/Gran Torino Sport/Torino





# '73 Ford Torino

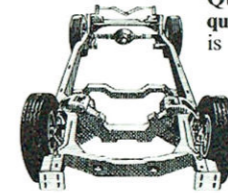
Gran Torino Brougham/Gran Torino/Gran Torino Sport/Torino



## BETTER IDEAS BY THE SCORE... STANDARD IN EVERY '73 FORD TORINO

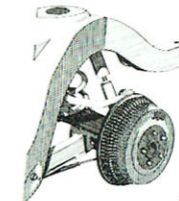
GRAN TORINO BROUGHAM, GRAN TORINO,  
GRAN TORINO SPORT, TORINO

The new Torino was designed with the idea that you shouldn't have to sacrifice quality, comfort and stability for the convenience of a mid-size car. So every Torino in the line comes with a long list of better ideas to give you all the car you need. This year there are 11 models in two wheelbase sizes: 114 in. (2-door models) and 118 in. (4-door models). And no matter which model you select, you'll get a solid lineup of features you might have expected to find only in the big cars.



**Quiet that's born of quality.** Torino's quiet is a direct result of Ford's quest for quality . . . from design and testing on through final assembly. Specifically, Torino is built with a big-

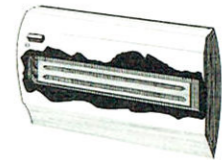
car type body and 5-crossmember frame. The strong body/frame design and many cushioning rubber mounts serve to eliminate metal to metal contact to greatly reduce noise. The body is designed with a reinforced box-section sill/rocker panel which acts as a secondary frame. Heavy sheetmetal crossmembers, front and rear, plus a rigidly designed floor section add still more strength. Rubber insulation in both front and rear suspensions plus improved acoustical insulation all around the body soak up still more noise and harshness. This totally integrated design plus the strength of the car's components add up to surprising quiet in a mid-size ride.



**Comfort by design.** Inside dimensions allow plenty of room for six adults. Deep-cushioned contour seats provide solid comfort for all. And a suspension system which utilizes computer-selected coil springs all around gives an uncommonly smooth mid-size car ride. Still more comfort is provided by DirectAire Ventilation which brings in fresh air with the windows closed.

**Extra easy handling.** You expect a mid-size car to handle well but Torino may be a big surprise. A responsive steering geometry plus the mid-size wheelbase makes Torino easy to maneuver in traffic or in tight parking spots. A wide tread and unique full coil, 4-link rear suspension design offer directional stability and solid roadability.

**New Lifeguard Design Safety Features.** Because Ford cares about your safety, Steel Guard Rails built into side doors, energy-

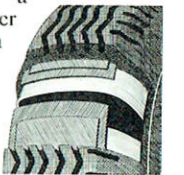


absorbing steering column and strong cross-member frame help protect the driver and passengers. New Energy-Absorbing Bumper System meets Federal Safety Stan-

dards. And the Seat Belt Reminder System warns you to "buckle up."

**Economy of Operation.** All 1973 Torinos call for 36,000 miles, or 3 years, between major chassis lubrications. Oil filter change initially at 4,000 miles or 4 months, and at 8,000-mile or 8-month intervals thereafter. Other economy features include: self-adjusting brakes, 2-year engine coolant-antifreeze, long-life battery, corrosion-resistant aluminized muffler, zinc-coated underbody parts, use of regular gas\*, and more.

**Equipment flexibility to meet your special needs.** No one uses his car quite like you do. So a wide choice of options and features is offered to help you personalize your Torino to match your driving tastes. Steel-Belted Radial Ply Tires, for example, are available on the full Torino line. Six engines offer a broad selection in power and economy. And a Trailer Towing Package turns any Torino into a Recreational Vehicle.



For all its strength, comfort and handling, Torino still carries a mid-size price tag to make it one of the best values on the road today. See your Ford Dealer for a test drive. See for yourself that the solid mid-size Torino is all the car you'll need.

\*All 1973 Torino engines are designed to operate on regular gasoline with an octane rating of at least 91 (Research Method) when adjusted to factory recommended specifications.



The Gran Torino could be called a mid-size limousine if it weren't so easy handling and so much fun to drive. Shown with White vinyl roof. (Color 4B.)

**Ford Torino...the mid-size that's big on comfort, confidence and quiet.**

Meet the 1973 Torinos . . . the cars that combine big car features with the size and handling of a smaller, sportier car. This year there are 11 models in four series and two wheelbase sizes: 114 in. (2-door models) and 118 in. (4-door models). Look them over in this catalog and at your Ford Dealer's. When you consider what these cars have to offer, you'll see Torino is a lot of car for a mid-size price.

**Ford Gran Torino Brougham**

**Where splendor is the inside story.**

**2-Door Hardtop, 4-Door Pillared Hardtop**

Step inside the Brougham and experience the kind of luxury and quality you might expect to find only in high-price fine cars. Available in both 2-Door Hardtop and 4-Door Pillared Hardtop, the Torino Brougham features nylon cloth fabrics with leather-like vinyl seat trim and door panels. Exclusive Flight Bench seat and fold-down front center armrest offer exceptional comfort in a mid-size car. Decorator color schemes include choices of Tobacco, Beige, Medium Blue, Medium Green, and Black. Exterior features unique Brougham identification.

The exclusive Brougham instrument panel has a look of luxury all its own. Woodtone inserts highlight the instrument cluster, glove box panel and deluxe 2-spoke steering wheel. All gauges are easy to read and controls are within easy reach. Electric clock, dual note horn and bright pedal pads are also standard on the Brougham.

The front end has a new look for '73 with a broader grille, large parking/turn signal lamps and Energy-Absorbing Bumper System. There are 16 paint colors for '73, four of them brand new. And there are now six color selections in the optional vinyl roof. A wide range of comfort, convenience and performance options, covered on page 13, will help you match your Gran Torino Brougham to your taste in motoring.

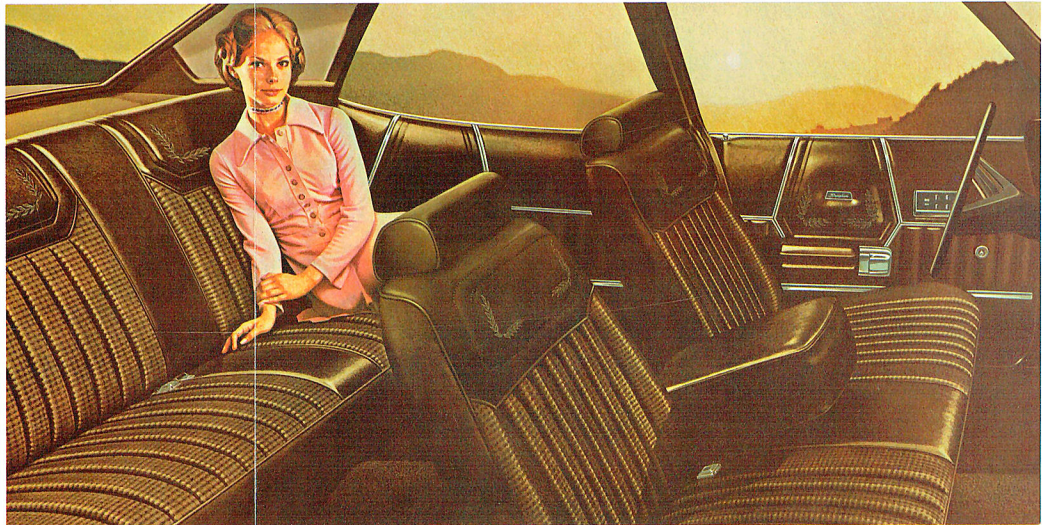
**Options Shown**  
 White Sidewall Tires, Deluxe Bumper Group, Vinyl Roof, Deluxe Wheel Covers, Power Windows, Remote Control Left Hand Mirror, SelectShift.

For your convenience, each illustration is color coded, example: (Color 3M). Your Ford Dealer will be pleased to show you a color chip and actual swatches of vinyl roof and interior trim materials.

**Standard Features Gran Torino Brougham**

- Mechanical—250 CID Six • 3-Speed Fully Synchronized Manual Transmission
- Manual Front Disc Brakes • Direct/Aire Ventilation • Black Sidewall Tires
- Energy-Absorbing Bumper System
- Inside Hood Release • Reversible Keys, "Keyless" Locking • Heater/Defroster
- Uni-Lock Shoulder/Lap Belts with Reminder System • All Ford Motor Company Lifeguard Design Safety Features listed on page 14.

- Appearance & Comfort—Nylon Cloth and Vinyl Seat and Door Trim • Front Center Armrest • Color-Keyed Carpeting
- Lower Bodyside, Wheel Lip, Valance Panel Moldings and Deck Lid Lock Cover • Deluxe Sound Package
- Concealed Windshield Wipers • Trunk Mat • Hub Caps.



The inside story is the big story on the Gran Torino Brougham. Seats are tastefully designed, expertly tailored and as comfortable as they look. Five interior color schemes including Tobacco, shown here (Color NZ).



On the road or standing still, the Gran Torino Brougham 2-Door Hardtop with Black vinyl roof and subtle Beige interior stands out from the pack in style and elegance. (Color 9A.)



Gran Torino 2-Door Hardtop, 4-Door Pillared Hardtop, Squire, Wagon features front end styling to incorporate the new Energy-Absorbing Bumper System and new broad grille. (Color 5M.)

# Ford Gran Torino

## Leading a quiet revolution

Gran Torino 4-Door Pillared Hardtop. Shown with White vinyl roof. (Color 3K). Gran Torino Wagon, center (Color 2B), and Gran Torino Squire, below (Color 9A).

### 2-Door Hardtop, 4-Door Pillared Hardtop, Squire, Wagon

Gran Torino offers much more car all around than you might expect from a mid-size. Comfort, strength . . . and most of all quiet. The kind of quiet that comes when a car is well put together. You'll feel it as you drive along the highway. Solid, smooth . . . practically vibration-free. And you're likely to be surprised at how easy the Gran Torino handles. It's a result of responsive steering geometry, full coil suspension and extra heft in the car itself.

All-new for '73 are the low-back bench seats with low profile head restraints. On the road, comfort is king with deep cushions and plenty of head, leg and shoulder room. Room enough, in fact, for six adults to sit comfortably. And a special acoustical materials package helps soak up road noises.

Standard power team matches the sturdy 250 CID Big Six engine with 3-speed fully synchronized manual transmission. Wagons are powered by the 302 CID 2V V-8. Five optional engines ranging up to the big 429 CID 4V V-8 and SelectShift Cruise-O-Matic help you make your Gran Torino exactly the car you want it to be.

**Gran Torino Interior.** Luxurious pleated cloth and vinyl bench seats come with adjustable headrest, color-keyed carpeting, vinyl door panels, padded armrests with integral door pull handles. A wide choice of colors includes Medium Blue, shown here (Color BB), Black, Beige, Medium Green, and Tobacco.

**Sport Cloth Trim.** This optional interior features pleated houndstooth cloth and matched vinyl seats. It's available with Gran Torino 2-Door Hardtop and Gran Torino Sport models and comes in a choice of Ginger, shown here (Color DF), and Black.

**Pleated Vinyl Seat Trim.** Standard on Gran Torino Wagon. It's optional on Gran Torino 2-Door and 4-Door Pillared Hardtops. Durable vinyl is supple to the touch with the look of leather. Available in Beige, shown here (Color CF), Black, Medium Blue, Medium Green, and Ginger.

**High Back Buckets.** The last word in sporty looks and comfort. Available as options on Gran Torino 2-Door Hardtop, Gran Torino Sport 2-Door Hardtop and SportsRoof models, they feature leather-grain vinyl trim with sport-styled pleats. Color choices include Medium Green, shown here (Color KR), Black, Beige, Medium Blue, and Ginger. Center console is optional.

**Options Shown** White Sidewall Tires, Deluxe Bumper Group, Wheel Covers, Vinyl Inset Bodyside Molding, Vinyl Roof, Deluxe Luggage Rack, Metallic Glow Paint (Blue Glow 3K) shown upper right.

### Standard Features

#### Gran Torino

**Mechanical**—250 CID Six • 3-Speed Fully Synchronized Manual Transmission • Manual Front Disc Brakes • Direct-Aire Ventilation • Black Sidewall Tires • Energy-Absorbing Bumper System • Inside Hood Release • Reversible Keys, "Keyless" Locking • Heater/Defroster • Uni-Lock Shoulder/Lap Belts with Reminder System • All Ford Motor Company Lifeguard Design Safety Features listed on page 14.

**Appearance & Comfort**—Cloth and Vinyl Seat and Door Trim • Color-Keyed Carpeting • Deluxe Sound Package • Lower Bodyside, Wheel Lip, Valance Panel Moldings and Deck Lid Lock Cover • Concealed Windshield Wipers • Trunk Mat • Hub Caps.

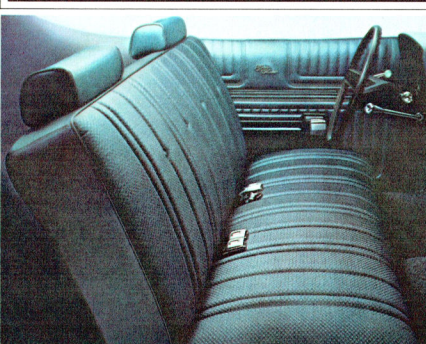
**Wagons**—Include above items plus the following: 302 CID 2V V-8 • Power Front Disc Brakes • All-Vinyl Pleated Trim • Wheel Covers (Squire) • 3-Way Magic Doorgate.

### Specifications

#### Gran Torino

Wheelbase, 2-Door . . . . .	114"
4-Door, Wagons . . . . .	118"
Length, 2-Door . . . . .	208"
4-Door . . . . .	212"
Wagons . . . . .	215.6"
Height, 2-Door . . . . .	52.1"
4-Door . . . . .	53.0"
Wagons . . . . .	55.0"
Width, 2-Door, 4-Door . . . . .	79.3"
Wagons . . . . .	79.0"
Front Tread, 2-Door, 4-Door . . . . .	62.8"
Wagons . . . . .	63.4"
Rear Tread, 2-Door, 4-Door . . . . .	62.9"
Wagons . . . . .	63.5"
Luggage Capacity (cu. ft.) . . . . .	14.8
Cargo Capacity (cu. ft.) . . . . .	84.9
Fuel Capacity (gal.) and Grade	
2-Door, 4-Door . . . . .	22.5, Regular
Wagon . . . . .	20.5, Regular
Approximate Curb Weights (lb.)	
2-Door . . . . .	3714
4-Door . . . . .	3765
Wagon . . . . .	4253
Squire . . . . .	4278

Note: See Color Code reference on page 3.



Gran Torino Standard Interior (Color: BB)



Sport Cloth Trim (Color: DF)



Pleated Vinyl Trim (Color: CF)



High Back Bucket Seat (Color: KR)



# Ford Gran Torino Sport

Call it responsive...  
call it rakish...call it fun!

## Hardtop and SportsRoof

A first look is the tip-off to the excitement that's built into the Gran Torino Sport. Choose from two lively models . . . the 2-Door Hardtop and 2-Door SportsRoof. For '73 there is a new broad, bold grille with distinctive ornament, F-70 x 14 raised white letter Wide Oval tires, new accents with black rear bumper pad and matching taillamp treatment. They're all standard together with dual racing mirrors, trim rings, and hub caps, lower bodyside and wheel lip moldings.

Inside, new pleated all-vinyl seats, molded door trim panels and nylon carpeting are tastefully color-keyed. For a more sporty look, choose optional sport cloth interior, High Back bucket seats, shown on page 7, and deluxe 3-spoke Rim-Blow Steering Wheel.

Standard power team is the 302 CID 2V V-8 and 3-speed fully synchronized manual transmission. Front disc brakes are also standard. Four optional V-8's including a big 429 CID V-8 offer the kind of performance you want. And a 4-speed floor-mounted manual with Hurst Shifter® (351 4V V-8) makes the Gran Torino Sport a real road machine.

For sporty performance or sporty looks, personalize your Gran Torino Sport with new Tutone lower bodyside paint, Magnum 500 chrome wheels, Rallye equipment group, Steel-Belted Radial Ply Tires, laser stripe, competition suspension and power front disc brakes. See page 13 for a complete listing of options.

### Standard Features Gran Torino Sport

Mechanical—302 2V V-8 • 3-Speed Fully Synchronized Column-Mounted Manual Transmission • Manual Front Disc Brakes • F-70 x 14 Raised White Letter Wide Oval Tires • Direct Aire Ventilation • Energy-Absorbing Bumper System • Heater/Defroster • Reversible Keys, "Keyless" Locking • Uni-Lock Shoulder/Lap Belts with Reminder System • Inside Hood Release • All Ford Motor Company Lifeguard Design Safety Features listed on page 14.

Appearance & Comfort—All-Vinyl Pleated Seat • Molded Door Trim Panels • Carpeting • Lower Bodyside/Wheel Lip Moldings • Trim Rings/Hub Caps • Color-Keyed Dual Racing Mirrors • Concealed Windshield Wipers • Trunk Mat • Black Rear Bumper Pad and Rear Valance Panel Molding

Note: See Color Code reference on page 3.

### Specifications Gran Torino Sport

Wheelbase . . . . .	114"
Length . . . . .	208"
Height, SportsRoof . . . . .	52.1"
Hardtop . . . . .	52.1"
Width . . . . .	79.3"
Front Tread . . . . .	62.8"
Rear Tread . . . . .	62.9"
Luggage Capacity (cu. ft.)	
Hardtop . . . . .	14.8
SportsRoof . . . . .	16.0
Fuel Capacity (gal.)	
and Grade . . . . .	22.5, Regular
Approximate Curb Weights (lb.)	
Hardtop . . . . .	3826
SportsRoof . . . . .	3830

### Options Shown

Deluxe Bumper Group, Vinyl Roof (shown on 2-Door Hardtop), High Back Bucket Seats, Laser Stripes, Magnum 500 Wheels (shown on SportsRoof model).



Gran Torino Sport 2-Door SportsRoof features rakish rear body lines plus full-length laser stripe and Magnum 500 wheels. (Color 6E.)



Gran Torino Sport Interior. New pleated vinyl seats are thickly padded, supple and sporty looking. Color choices include Medium Green, shown here (Color FR), Black, Beige, Medium Blue, Ginger. Interior standard on Gran Torino Squire Wagon.



## Rallye Equipment Group

Separate the men from the boys with this exciting performance group option. Rallye-style instrumentation group features tachometer, trip odometer, fuel gauge, oil pressure gauge, ammeter and temperature gauges and electric clock. You're set to take on anything with the competition suspension and rear stabilizer bar . . . G70 x 14 tires with raised white letters and 6" wide rims . . . 4-speed floor-mounted manual with Hurst Shifter® . . . 351 CID 4V V-8. It's available on all 2-door models except the Brougham.

### Options Shown

Leather-Wrapped 2-Spoke Steering Wheel, Select Aire Conditioner, AM/FM Stereo Radio, Rallye Equipment Group. See page 13 for complete list of options.



# Ford Torino

## Where value speaks louder than words

### 2-Door Hardtop, 4-Door Pillared Hardtop, Wagon

Torino is the value leader of Ford's mid-size car line. It offers the same easy handling and road-hugging stability as the luxurious Gran Torino. It offers the same 114-in. and 118-in. wheelbases, comfortable seating and room to stretch out. It offers a smooth, quiet ride. And it offers everything at a price that will please any value-conscious car buyer.

Consider what you get. First of all, a wide choice of models. 2-Door Hardtop, 4-Door Pillared Hardtop and Station Wagon. All offer the striking good looks of the full Torino line with their own distinctive full-width grille. For '73, Torino sports a complete new front end design which incorporates the new Energy-Absorbing Bumper System.

Extra touches include frameless, ventless door glass, bright drip moldings and chrome hub caps. New optional Accent Group includes bright wheel lip moldings and color-keyed nylon carpeting.

Torino comes with the 3-speed fully synchronized manual transmission and the 250 Six engine. Manual front disc brakes and new larger rear brakes are standard too. To match Torino to your taste in looks and performance, a full range of options is available. See page 13.

And for another big story, see the six-passenger Torino Wagon. One of the best values in the wagon field. It comes with the 3-Way Magic Doorgate, 302 2V V-8, power front disc brakes and bright trim. All standard. And remember, it's big enough to handle 4 x 8 plywood panels flat.

### Standard Features Torino

**Mechanical**—250 CID IV Six  
• 3-Speed Fully Synchronized Manual Transmission • Manual Front Disc Brakes • DirectAire Ventilation • Heater/Defroster  
• Black Sidewall Tires • Energy-Absorbing Bumper System  
• Reversible Keys, "Keyless" Locking • Uni-Lock Shoulder/Lap Belts with Reminder System  
• Inside Hood Release • All Ford Motor Company Lifeguard Design Safety Features listed on page 14.

**Appearance & Comfort**—All-Vinyl Seat/Door Trim • Floor Mat  
• Bright Drip Moldings • Hub Caps.  
**Wagons**—302 2V V-8 • Power Front Disc Brakes • 3-Way Magic Doorgate • Bright Moldings at Rear Quarter Window, Tailgate Window and Belt.

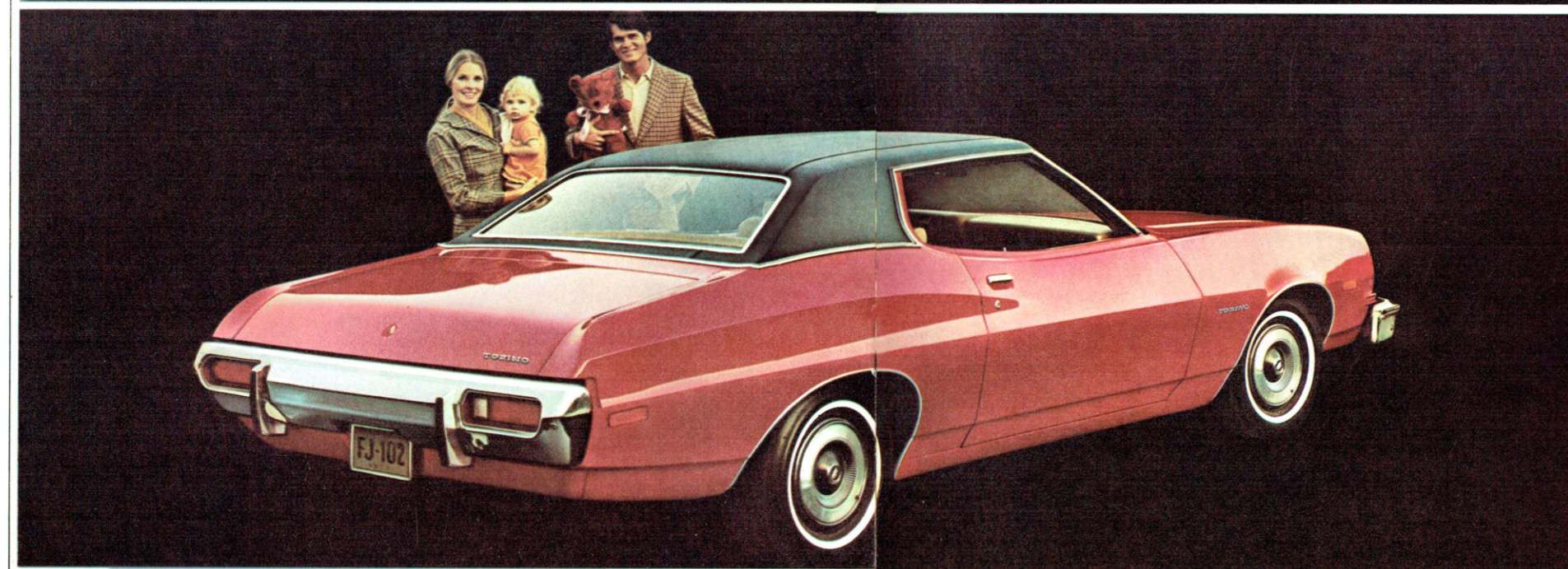
### Specifications Torino

Wheelbase, 2-Door.....114"  
4-Door, Wagon.....118"

Length, 2-Door.....208"  
4-Door.....212"  
Wagon.....215.6"  
Height, 2-Door.....52.1"  
4-Door.....53.0"  
Wagon.....55.0"  
Width, 2-Door, 4-Door.....79.3"  
Wagon.....79.0"  
Front Tread, 2-Door, 4-Door...62.8"  
Wagon.....63.4"  
Rear Tread, 2-Door, 4-Door...62.9"  
Wagon.....63.5"  
Luggage Capacity (cu. ft.).....14.8  
Cargo Capacity (cu. ft.).....84.9  
Fuel Capacity (gal.) and Grade  
2-Door, 4-Door.....22.5, Regular  
Wagon.....20.5, Regular  
Approximate Curb Weights (lb.)  
2-Door.....3677  
4-Door.....3740  
Wagon.....4210

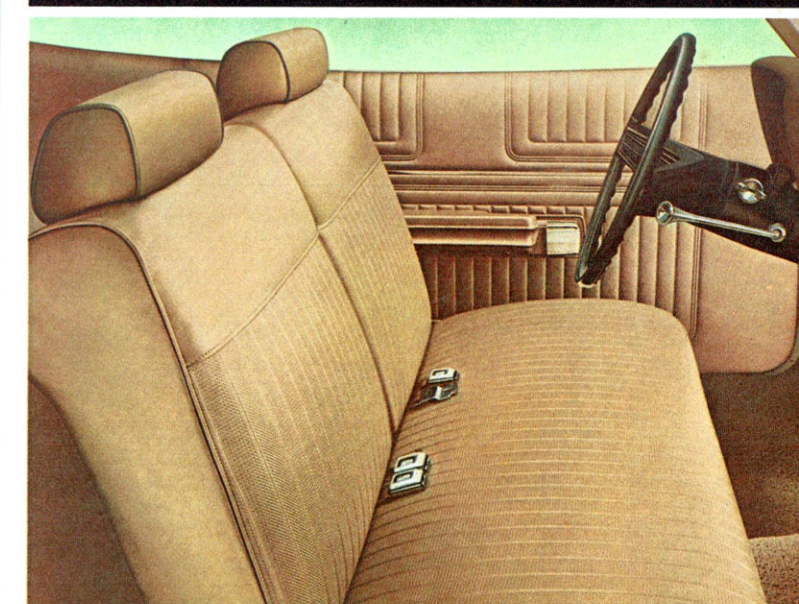
### Options Shown

*Deluxe Bumper Group, Accent Group, White Sidewall Tires, Wheel Covers, Bodyside Vinyl Insert Molding, Vinyl Roof, Deluxe Luggage Rack, Appearance Protection Group, SelectShift Cruise-O-Matic.*



Torino 2-Door Hardtop features Black vinyl roof, reflecting the smooth, clean styling of the full Gran Torino and Torino line. (Color 2B.)

Six-passenger Torino Wagon has a cargo capacity of over 84 cubic feet. Deluxe luggage rack helps carry even more cargo. (Color 5H.)

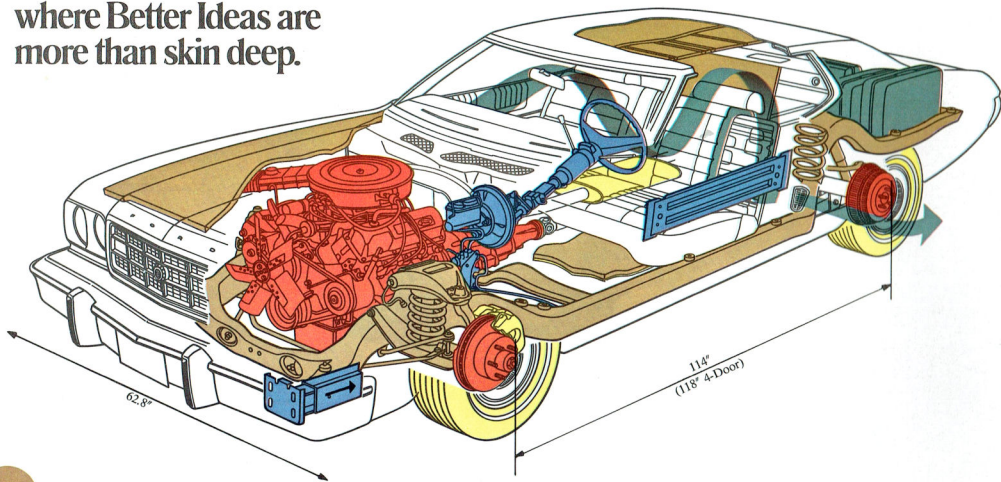


Roomy Torino interior trimmed in easy-care vinyl features the new low-back seats. Color choices include Beige, shown here (Color AT), Black, Medium Green, and Medium Blue.

Note: See Color Code reference on page 3.



# The '73 Torinos... where Better Ideas are more than skin deep.



## Better Ideas for a Smooth, Quiet Ride

Coil spring, 4-link rear suspension adds to Torino's straight-ahead directional stability.

Sixteen tuned rubber body/frame mounts help isolate passenger compartment from road shocks.

Special acoustical package utilizes sound-deadening materials at 21 locations surrounding the passenger area to make an exceptionally quiet ride and provide insulation from heat and cold.

Computer selected springs and shock absorbers help provide a better ride by matching the spring stiffness with the particular model, engine and optional equipment.

Insulation sandwiched between steering gear and column helps prevent noise and vibration from reaching the driver.

Coil spring, rubber insulator front suspension minimizes noise and vibration.

Frame side rails fit into body between rocker panels to permit a low entry height and flatter floor as well as adding extra protection.

Rigid body construction makes use of heavy sheetmetal crossmembers, "stamped in" stiffeners in the floor and double rocker panels further strengthened by a "U" channel section to act as a secondary frame.

Torino's frame is electron-welded from two formed steel side rails and five steel crossmembers. It is computer-engineered for strength and to help absorb vibration.

## Better Ideas for Handling and Performance

3-speed manual fully synchronized transmission is standard. SelectShift Cruise-O-Matic is optional on all models and the 4-speed manual with Hurst Shifter® is optional with the 351 CID 4V V-8.

The 250 CID 1V Six is standard on all models except Gran Torino Sport and all wagon models where the 302 CID V-8 is standard. Optional engines include the 302 CID, 351 CID 2V V-8, 351 CID 4V V-8, 400 CID 2V V-8 and 429 CID 4V V-8.

Wide tread on both 2-door and 4-door models (62.8" front, 62.9" rear) comes close to the big cars, makes Torino a real "road hugger."

Larger rear brake drums accommodate the added weight.

Manual front disc brakes are standard to give more dependable stopping power. Power brakes standard on wagons.

A precise steering geometry in 2-door models provides a short curb-to-curb turning diameter of just 41.2 feet.

## Better Ideas for Comfort and Convenience

Extra-large 14.8 cu. ft. luggage compartment allows plenty of room for golf clubs, garden tools, suitcases, and other bulky items.

Plenty of interior space, front and rear, provides stretch-out room for six adults.

DirectAir Ventilation, standard on all models, changes air with all windows closed. Brings fresh air in, keeps noise out.

Two wheelbases (114" for 2-doors, 118" for 4-doors and wagons) offer Torino buyers a genuine choice when it comes to sportiness or family-size interior room.

A 2½" molded foam seat pad placed over wire-woven pad support and sturdy seat springs for comfort seating, a better seating position.

Inside hood-latch release, a new anti-theft device, is located conveniently below the left side of the instrument panel.

New 2.5-qt. windshield washer reservoir allows a longer interval between filling.

## Better Ideas for Safe Driving

Tube and collar steering column absorbs impact energy.

Steel Guard Rails in side doors provide side impact protection.

Energy-Absorbing Bumper System is designed to meet Federal Standards and offer added protection.

Dual hydraulic brake system with warning light on instrument panel indicates any loss of hydraulic pressure when brakes are applied.

## Better Ideas for Economy and Durability

Six-step paint process consists of phosphate coating, two tough coats of epoxy primer and three enamel finish coats to provide a deep luster and resist corrosion.

Diamond Lustre Enamel in choice of 16 colors is applied through an electrostatic process that produces a fine uniform finish.

Self-adjusting brakes, 4000-mile oil change and other service-savers make Torino an easy car to care for.

Aluminized muffler with stainless components resists corrosive effects of exhaust gases for long life.

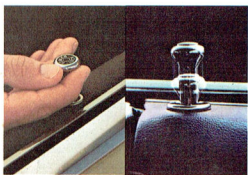
Optional Steel-Belted Radial Ply Tires are available on all Torino models.



# Torino Better Idea Options



**Trailer Towing Packages.** Two packages let you tow trailers up to 3500 lb. (SAE Class II) and 6000 lb. (SAE Class III). Depending on class, packages include such items as trailer light wiring harness, heavy-duty suspension, heavy-duty frame (except Wagons), extra-cooling radiator, heavy-duty alternator, 3.25 axle ratio, rear window towing decal (optional engines required).



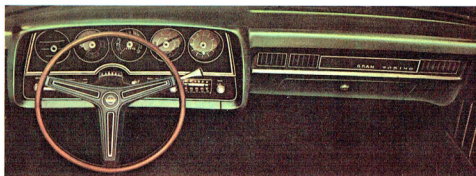
**Electric Power Door Locks.** A master lock-unlock control switch on both front doors (doorgate on wagons) gives exceptional security. Children cannot get out, intruders cannot get in.



**Color-Keyed Dual Racing Mirrors** (left hand remote control) standard on Gran Torino Sport models.



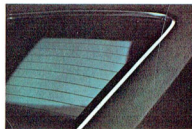
**Power Front Disc Brakes** employ the same principle that stops the big jet planes.



**3-Spoke Rim-Blow Steering Wheel, SelectShift Cruise-O-Matic Transmission, AM/FM Stereo Radio, Select-Aire Conditioner and Electric Clock** are popular options shown on this standard Gran Torino instrument panel.



**Steel-Belted Radial Ply Tires**, new for '73, are optional on all Torino models in BSW or WSW.



**Electric Rear Window Defroster.** Helps melt ice and snow, improves visibility. Includes tinted glass.



**Vinyl Insert Bodyside Molding** helps protect against dents and dings.



**Visibility Group.** Includes outside left hand remote control mirror, ash tray light, dome/map light, glove compartment light, luggage compartment light, cargo light on wagons, instrument panel courtesy light, engine compartment light, rear door courtesy light switches (4-Door), headlights "lights-on" warning buzzer, parking brake warning light and headlight switch illumination. Optional power windows with driver lock control also shown.



**Deluxe Bumper Group.** Includes bumper guards, front and rear, and a full-width rub strip on the front bumper.



Trim Rings and Hub Caps



Full Wheel Covers



Deluxe Wheel Covers



Magnum 500 Chrome Wheels

A full range of individual and group options is offered to let you "tailor make" your Torino. For complete information consult your dealer. Popular choices shown here and throughout the catalog include:

**Comfort and Convenience Options.** Tinted Glass • 6-Way Full-Width Power Seats • AM Radio • Dual Rear Seat Speakers • Deluxe Seat Belts (includes automatic seat back releases on 2-Door) • Station Wagon Deluxe Luggage Rack (pg. 7) • Instrumentation Group (includes tachometer, trip odometer, engine gauges, electric clock) • Power Steering • Power

Tailgate Window • Rear-Facing Third Seat (Gran Torino and Squire Wagons) • Interval Windshield Wipers • Power Side Windows • Deluxe Seat Belts.

**Trim and Appearance Options.** High Back Bucket Seats (pg. 7) • Station Wagon Carpeted Cargo Area • Laser Stripes (pg. 8) • Sport Cloth Trim (pg. 6) • Pleated Vinyl Seat Trim (pg. 7) • Leather Wrapped Steering Wheel (pg. 9) • Metallic Glow Paints • Console (available with High Back buckets (pg. 7) • Vinyl Roof (pg. 5) • White Sidewall Tires • Tutone Lower Bodyside Paint (Gran Torino Sport, (pg. 8)

• Torino Accent Group (carpeting and wheel lip moldings) • Front Bumper Guards • Rear Bumper Guards

**Performance Options.** 4-Speed Manual Transmission with Hurst Shifter® • Optional Axle Ratio • Steel-Belted Radial Ply Tires • Heavy-Duty Battery • Rallye Equipment Group (pg. 9) • Competition Suspension • Heavy-Duty Load Suspension • Traction-Lock Differential.

**Engines—**302 CID 2V V-8 • 351 CID 2V V-8 • 351 CID 4V V-8 • 400 CID 2V V-8 • 429 CID 4V V-8.



## Choose from 11 mid-size Torinos!



GRAN TORINO BROUGHAM  
2-DOOR HARDTOP (COLOR 3K)



GRAN TORINO BROUGHAM  
4-DOOR PILLARED HARDTOP (COLOR 5M)



GRAN TORINO SPORT  
2-DOOR HARDTOP (COLOR 2B)



GRAN TORINO SPORT  
2-DOOR SPORTSROOF (COLOR 6F)



GRAN TORINO  
2-DOOR HARDTOP (COLOR 5A)



GRAN TORINO  
4-DOOR PILLARED HARDTOP (COLOR 5H)



GRAN TORINO  
SQUIRE (COLOR 4S)



GRAN TORINO  
WAGON (COLOR 3B)



TORINO  
2-DOOR HARDTOP (COLOR 6E)



TORINO 4-DOOR  
PILLARED HARDTOP (COLOR 4C)



TORINO WAGON  
(COLOR 3D)

**Ford Motor Company Lifeguard Design Safety Features.** Ford has been a pioneer in safety design in the automotive industry. Our Safety Research Center has developed stronger, safer, more dependable automotive products for you.

Every 1973 Torino includes these Ford Motor Company Lifeguard Design Safety Features as standard: Improved front and rear bumpers • Improved impact-absorbing laminated safety glass windshield • Dual hydraulic brake system with warning light • Glare-reduced instrument panel padding, windshield wiper arms, steering wheel hub, rearview mirror/mirror mounting and windshield pillars • Energy-absorbing steering column and steering wheel • Energy-absorbing armrests and safety-designed door handles • Front and rear lap belts with mini buckles for all seating positions and retractors for front and rear outboard occupants • Shoulder belts for front outboard occupants • Positive reminder warning light and buzzer for front outboard seat belts • Turn indicators with lane-changing signal feature • Inside yield-away rearview mirror • Energy-absorbing instrument panel with padding for center and outboard passengers • Padded sun visors • Locking steering column with warning buzzer • Two-speed windshield wipers • Windshield washers • Double-yoke safety door latches and safety hinges • Steel guard rails in side doors • Hazard warning flasher • Backup lights • Side marker lights • Energy-absorbing front seat back tops with padding • Self-locking front seat backs on two-door vehicles • Safety-designed coat hooks • Safety-designed radio control knobs and push buttons (on all cars equipped with radios) • Outside rearview mirror, driver's side • Safety rim wheels and load-rated tires • Corrosion-resistant brake lines • Uniform transmission shift quadrant (on all cars equipped with automatic transmissions) • Parking lamps coupled with headlamps • Non-reversing odometer • Safety design front end structure • Head restraints or high back seats for front outboard occupants • Safety glove-box latch (on all cars equipped with glove boxes).

Built-in safety is something you have going for you in every Torino. Take full advantage of this protection as you drive. Obey all traffic laws, think ahead and always buckle up for safety.

**Economy of Operation:** All 1973 Torinos call for 36,000 miles, or 3 years (whichever comes first), between major chassis lubrications. 4,000 miles, or 4 months, between oil changes. Oil filter change initially at 4,000 miles, or 4 months, and at 8000-mile or 8-month intervals thereafter. Other economy features include: self-adjusting brakes, 2-year engine coolant-antifreeze, long-life Motorcraft Sta-Ful battery, corrosion-resistant aluminumized muffler, zinc-coated underbody parts, use of regular gas, and more.

### NOTES:

**Color Codes.** For your convenience, each illustration is color coded, (example: Color 4B.) Your Ford Dealer will be pleased to show you a color chip and actual swatches of vinyl roof and interior trim materials.

**All 1973 Torino engines** are designed to operate on regular gas with octane rating of at least 91 (Research Method) when the engine is adjusted to factory-recommended specifications.

**Replacement Parts.** Your new 1973 Torino comes with factory-engineered Motorcraft battery, oil filter, shock absorbers; Autolite Powertrip Spark Plugs and other Ford-approved precision parts. For continued top performance, be sure to specify Motorcraft Parts and Autolite Powertrip Spark Plugs whenever replacement is necessary.

Illustrations and information presented were correct when approved for printing. Ford Division reserves the right to discontinue or change at any time, specifications or design without incurring obligations.

Some features shown or described are optional at extra cost. Most options are offered on all models. Some options are required in combination with other options. Availability of some models or features described may be subject to a slight delay. Always consult your Ford Dealer for the latest, most complete information on models, features, prices and availability.

All 1973 cars must meet Federal Emission Standards before sale. See your Ford Dealer for details.

Listening better.  
Building better.  
That's Ford.

# FORD TORINO

FORD DIVISION

