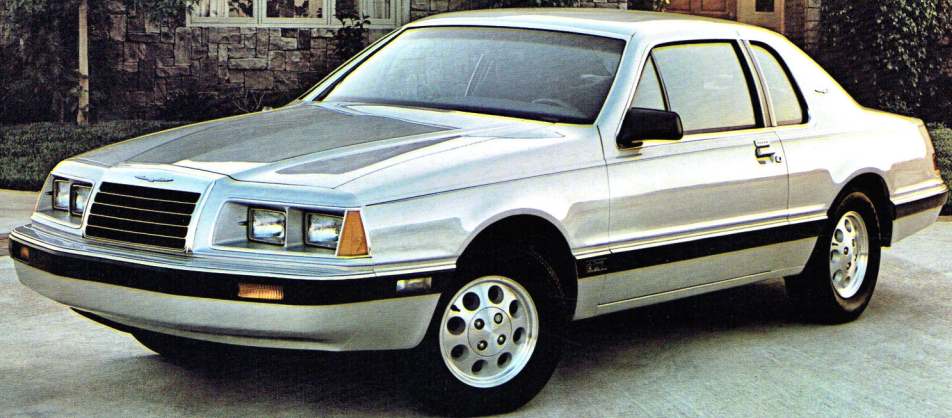
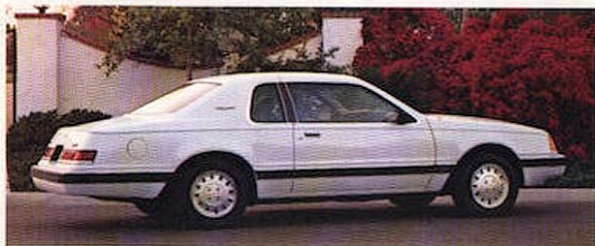


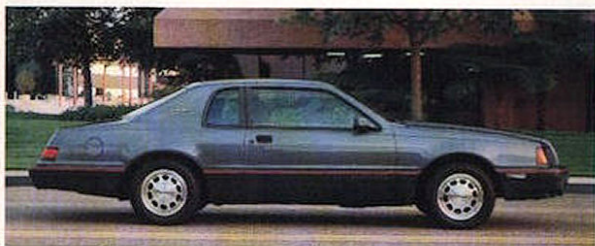
1986 THUNDERBIRD



THUNDERBIRD



Thunderbird élan puts the accent on comfort with its high-level interior and numerous standard convenience features. It's the Thunderbird for you if you want the ultimate in Thunderbird luxury.



Thunderbird Turbo Coupe means exhilarating performance and handling. It's a world class touring car powered by a 2.3 liter turbocharged engine and outfitted for the road. Visual cues complement its spirited performance.



Thunderbird, the driver's car, uses its sleek shape to help it slip through the wind and hold the road. Five-passenger comfort is combined with an impressive list of standard features in a technologically advanced design.

Thunderbird for 1986...from the maker of the best-built American cars

A 1985 survey of owners has established that Ford makes the best-built American cars. This is based on an average of problems reported by owners in the prior six months on 1981-84 models of all cars designed and built in the United States. Proof again that, at Ford ... Quality is Job 1.

Contents

The Thunderbird Environment	8-9
Thunderbird élan	10-11
Thunderbird Turbo Coupe	12-13
Standard Thunderbird	14-15
Ford Performance	16-17
Preferred Equipment Packages	18-19
Features, Options, Colors and Trims	20-21
Safety and Owner Information	22-23

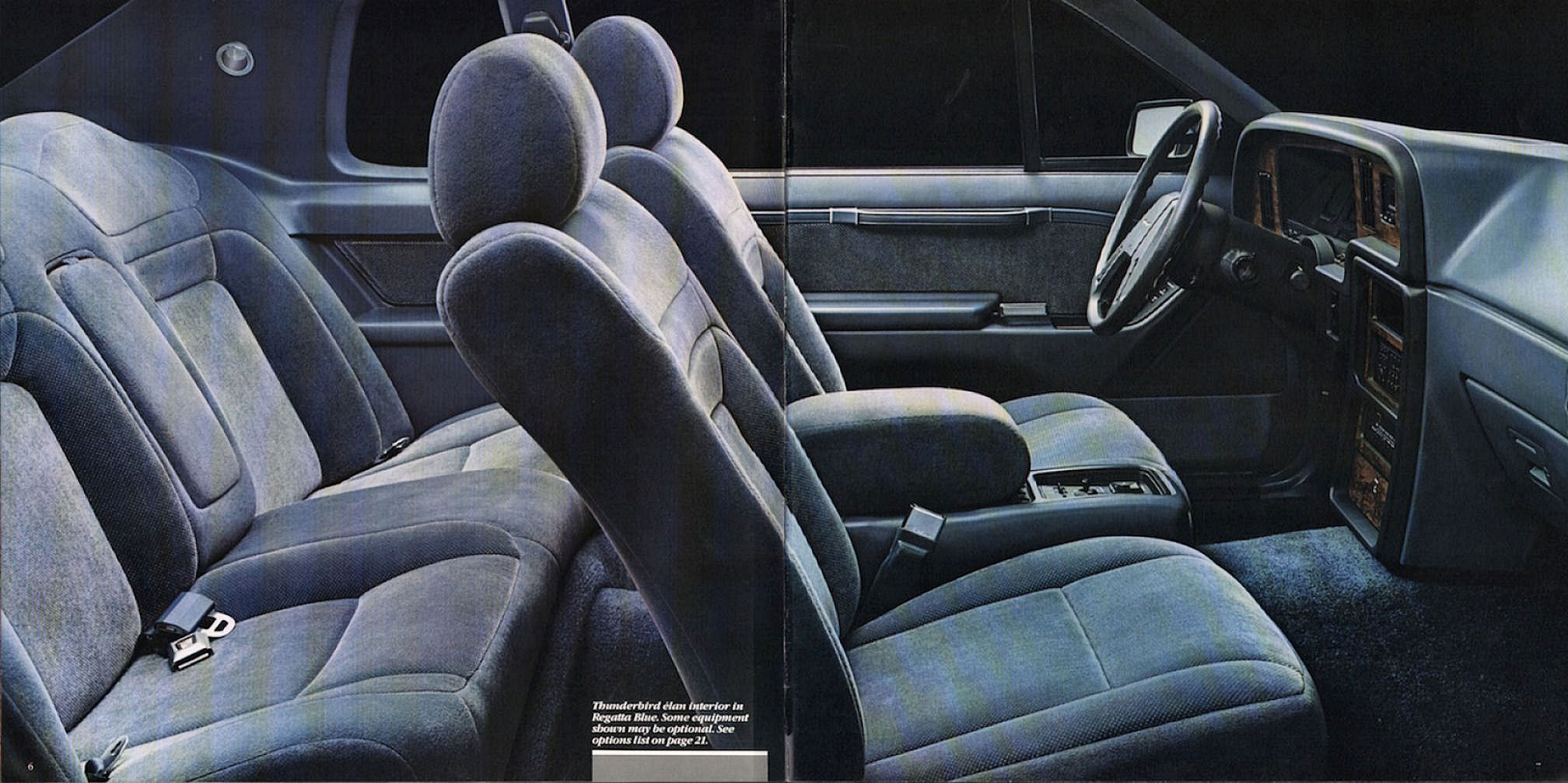
At right: Thunderbird in Regatta Blue Clearcoat Metallic. Shown with one of Thunderbird's new Preferred Equipment Packages. See pages 18-19 for details.

Some equipment shown may be optional. See options list on page 21.

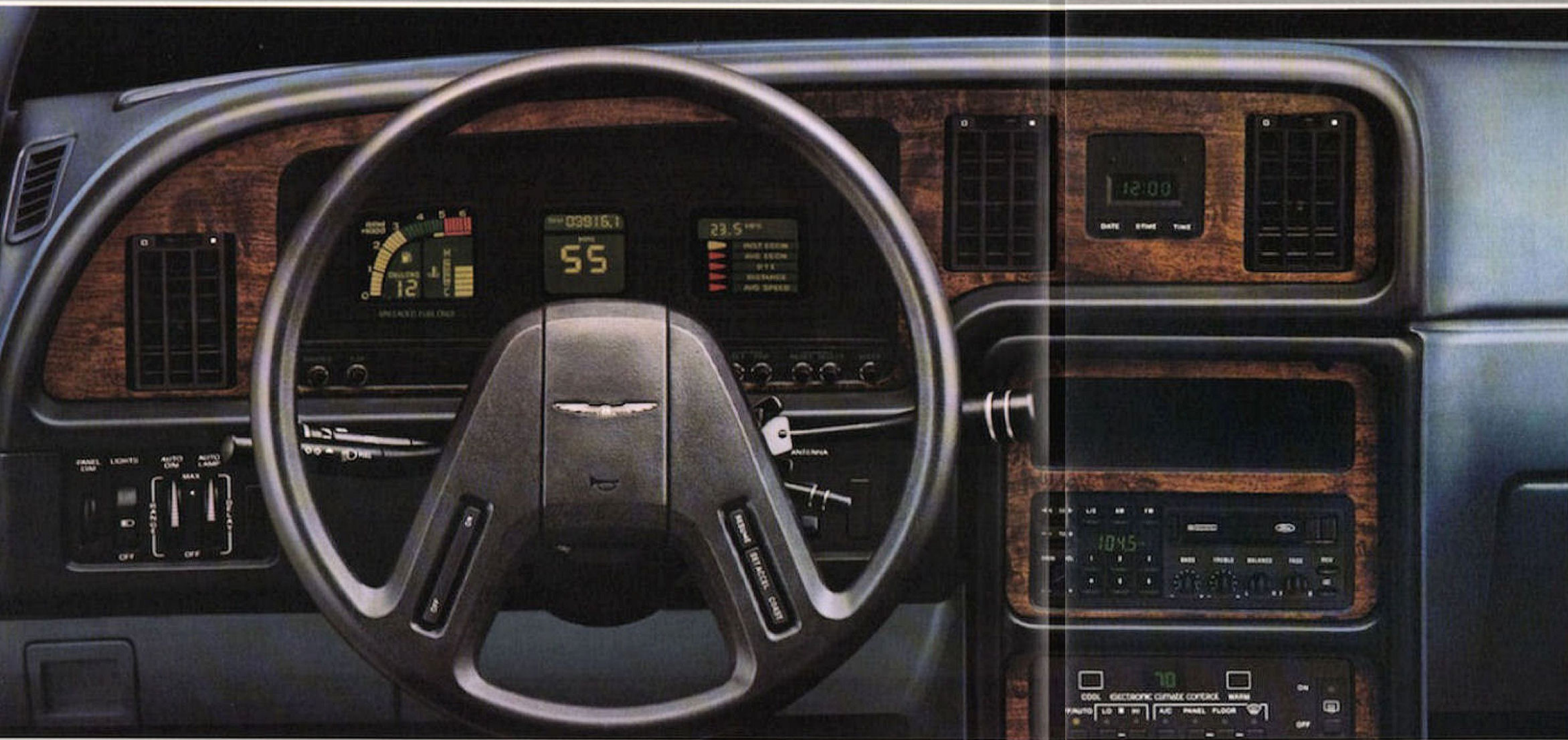




*Thunderbird élan in Deep
Shadow Blue Clearcoat Metallic.
Some equipment shown may be
optional. See options list on
page 21.*



Thunderbird élan interior in Regatta Blue. Some equipment shown may be optional. See options list on page 21.



Above: Optional electronic instrument cluster.

Right: Electronic instrument cluster detail.

Far right: A handy console is standard.

Some equipment shown may be optional. See options list on page 21.



Inside Thunderbird

Ergonomic design

The science of ergonomics involves the relationship between a vehicle and its driver and passengers. The best ergonomic design maximizes factors such as seating position, placement of instruments and controls, comfort and visibility.

In Thunderbird, applied ergonomics created an environment with sensible, convenient positioning of seats, controls, instruments and lights. For example, turn signals, windshield wiper/washer controls and headlamp dimmer are mounted on the steering column at the driver's fingertips.

The individually reclining split bench front seats also benefit from ergonomic design. They're body-contoured for comfortable back and thigh support with deep foam cushions supported by firm but flexible springs. The rear bench seat can accommodate up to three passengers.

Thunderbird instrumentation

Thunderbird's standard instrument panel (shown on page 15) features an electronic liquid crystal display (LCD) speedometer and combination odometer/trip odometer. Analog fuel and temperature gauges are accompanied by lights for "fasten seat belts," "high beam" and "brake." Also included are a service interval reminder, speed warning, positive shutoff air registers and side window demisters.

The electronic instrument cluster

Optional with Thunderbird and Thunderbird élan is the popular electronic instrument cluster (shown at left). In addition to the features of the standard instrumentation, it includes a liquid crystal tachometer display for rpm and allows the driver to select readouts for temperature, oil pressure, volts or fuel. Fuel level is also displayed digitally and there's a flashing light to signal "low fuel."

Also included are six systems Sentry lights (standard with élan and Turbo Coupe). They are lighted when certain conditions need attention ("door ajar" and "low washer fluid," for example). A 5-function LCD trip computer supplies useful travel information and the electronic digital clock displays the date, the current time, or the elapsed trip time.

THUNDERBIRD élan

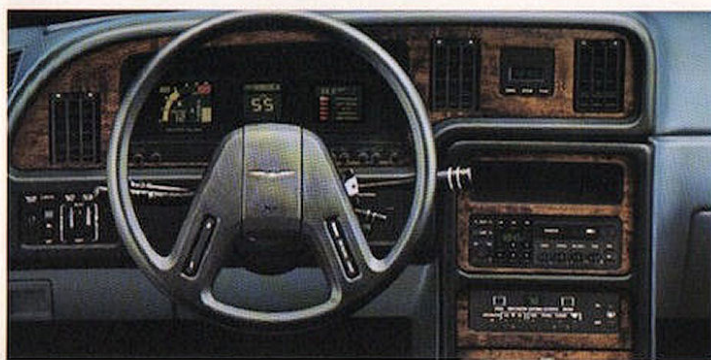
A most luxurious place to be



What sets élan apart is an interior compartment intended for the ultimate in Thunderbird comfort and luxury. The split bench seats are trimmed in fine cloth (ultrasoft leather trim is optional) and feature 4-way adjustable headrests. There are cloth inserts* in the door panels and in the coved area of the quarter trim panels. Well-appointed door trim panels include courtesy lights. Courtesy lights are located in the quarter trim panels, too, and are operated by a console-mounted switch.

Rear seat passengers enjoy the convenience of a folding center armrest. Thick 24-ounce carpeting covers the floor, and 6-ounce carpet is used throughout the luggage compartment. Standard convenience items include power windows, dual electric remote-control mirrors, tinted glass, interval windshield wipers, automatic parking brake release, systems sentry lights, illuminated visor mirrors and digital clock.

*Vinyl inserts with optional leather trim.



Above and left: élan interior and instrument panel.

Right: Thunderbird élan in Oxford White.

Some equipment shown may be optional. See options list on page 21.



THUNDERBIRD TURBO COUPE

The ultimate Thunderbird for the driving enthusiast

It all begins with the 2.3 liter turbo-charged engine. It's evidence that Turbo Coupe is outfitted for the open road. So is the 5-speed manual transmission with its smooth, short-throw shifter. And Turbo Coupe meets the pavement with P225/60VR15 BSW Goodyear unidirectional performance tires matched with 15" x 7" aluminum wheels.

The precise rack and pinion steering system, with its 15:1 non-variable ratio, puts the emphasis on handling. And gas-pressurized shock absorbers are used up front and in the Quadra-Shock rear suspension system (see page 17).

Inside, the articulated sport seats reward the demanding driver. The under-thigh support, side-bolster support and seat back angle are all adjustable. The power lumbar support is infinitely adjustable and the head restraints adjust 4 ways. All this to help the driver and passenger fit their seats to themselves.

The performance instrument cluster contains an analog speedometer, tachometer and turbo boost gauge as well as fuel, temperature, oil pressure and ampere gauges. Also standard: interval wipers, diagnostic alert lights, a soft-feel sport steering wheel, instrument panel courtesy lights, dual beam map light, dual illuminated visor mirrors, and more.

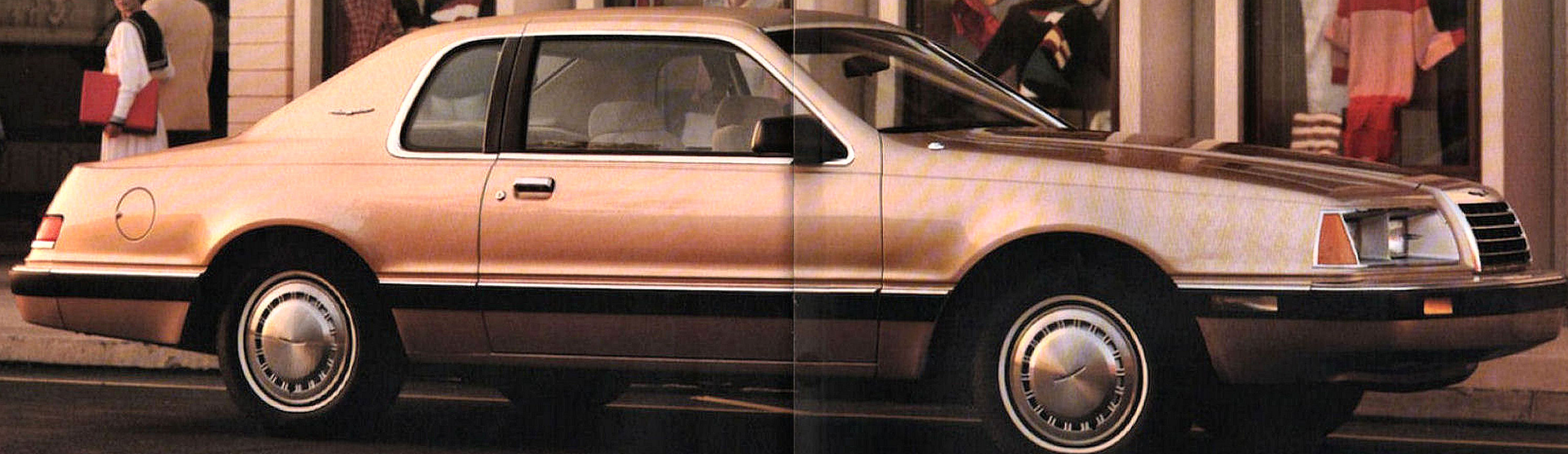
Left: Thunderbird Turbo Coupe in Medium Grey Clearcoat Metallic.

Above and right: Turbo Coupe interior and instrumentation.

Some equipment shown may be optional. See options list on page 21.



THUNDERBIRD



A design to match the times

Thunderbird's sleek shape answers the demands of the 80s: a car's styling must be functional as well as appealing. Thunderbird's efficient form contributes to both fuel efficiency* and vehicle handling. It's equipped for handling, too, with standard variable-ratio power rack and pinion steering, power front disc/rear drum

brakes, gas-pressurized shocks and struts and P215/70R14 BSW all-season tires. The power of the 3.8 liter V-6 engine is transmitted by the smooth, efficient SelectShift automatic. Above all, a driver's car.

Inside, the 5-passenger interior compartment features reclining split bench seats trimmed in cloth. An electronic AM/FM stereo radio is standard (and may be deleted for credit). Convenience items include a trip odometer, self-regulating illuminated quartz electric clock, luggage com-

partment light, side window demisters, glove box and ashtray lights, and dual visor mirrors. It's equipped the way you'd expect a Thunderbird to be.

*See gas mileage, page 17.

Above: Thunderbird in Sand Beige Clearcoat Metallic.

Right and far right: Thunderbird interior and instrumentation.

Some equipment shown may be optional. See options list on page 21.



Ford performance over the road and under the hood

A proven suspension design

Thunderbird's modified MacPherson front suspension is combined with a four-bar link configuration in the rear for good overall stability, steering response and vehicle handling.

A special suspension for Turbo Coupe

Turbo Coupe's Quadra-Shock rear suspension system contains four shock absorbers that soften and smooth the rear wheels' vertical travel caused by bumps, pavement breaks, potholes, etc., and control the axle's fore-and-aft movement.

Shock absorbers designed to smooth the way

Thunderbird's struts and shock absorbers contain a low-pressure charge of inert nitrogen gas. The gas suppresses foaming of the hydraulic fluid due to rapid bumps or similar agitation. This means the ride is smooth under normal circumstances, yet firm enough for rough going.

Responsive, precise steering

Thunderbird's rack and pinion steering features a power assist, with the added convenience of variable ratio. Variable ratio simply means a stable steering feel at highway speeds with fewer turns of the wheel required for turning and for parking maneuvers. The Turbo Coupe, which puts a bigger premium on handling, has a 15:1 non-variable ratio.

Standard V-6 power and EFI

Electronic fuel injection provides several advantages over a conventional carburetor. The major

advantage is a more efficient use of fuel. EFI offers improved overall operation, smooth running and easier starting.

Turbo Coupe power

Turbo Coupe's engine is an efficient, high-performance cross-flow head, overhead cam 4-cylinder with multiple port electronic fuel injection. A "blow through" turbocharger minimizes lag time to deliver crisp, quick throttle response. Around 4,600 rpm, the engine achieves 155 horsepower with the standard

5-speed manual transmission. The standard SelectShift automatic transmission and the improved 5.0 liter V-8 engine with multiple-port EFI. The standard transmission in Turbo Coupe is a carefully matched 5-speed manual.

Ford dynamic design

Thunderbird's shape utilizes the air moving around it to reduce

front and rear lift for directional stability and cornering agility. And Thunderbird's smooth lines contribute to reduced wind noise and enhanced fuel economy.

Thunderbird powerteams

Engine	Transmission	Final Drive Ratio
3.8L V-6	SelectShift auto.	2.73
3.8L V-6	Automatic Overdrive	3.27
2.3L Turbo	5-Speed manual	3.45
2.3L Turbo	SelectShift auto.	3.45
5.0L V-8	Automatic Overdrive	2.73



Left: Thunderbird Turbo Coupe in Black. Some equipment shown may be optional. See options list on page 21.



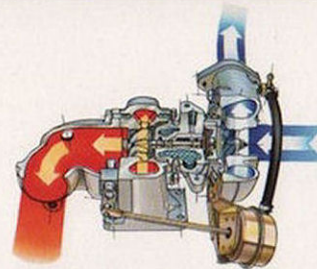
5-speed manual transmission (based on SAE standard J 1349).

Turbocharging: power with efficiency

Turbocharging is the means to combine power and efficiency in one engine. It has two major benefits. Under normal driving circumstances, the turbo remains efficiently at idle, contributing to fuel saving. But when a surge of power is required, pressing on the accelerator brings the turbo into action for quick response.

Thunderbird transmissions

The standard SelectShift automatic transmission has a locking torque converter which provides a mechan-



Turbocharging: Hot exhaust gases (red) turn the turbine wheel to power the compressor. Outside ambient air (blue) enters the compressor and is blown through the induction system to the combustion chambers.

Gas mileage

1986 EPA mileage estimates were not available at the time this catalog was approved for printing. As soon as EPA figures are released, your Ford Dealer will be among the first to receive this information.

A WELL-EQUIPPED CAR

The Thunderbird pictured below illustrates the high level of standard equipment in this series. Included is Preferred Equipment Package 151A, with the kinds of features that have proved popular with many car buyers.



Thunderbird (with Preferred Equipment Package 151A):

- 3.8 liter 2V V-6 engine
- SelectShift automatic transmission
- DuraSpark electronic ignition
- Electronic voltage regulator
- Power rack and pinion steering
- Power front disc/rear drum brakes

- Modified MacPherson strut front suspension with gas-pressurized struts
- 4-Bar link rear suspension with gas-pressurized shocks
- P215/70R14 all-season BSW tires
- Concealed drip moldings
- Depressed park windshield wipers
- Quad rectangular halogen headlamps

- Reclining split bench seats with cloth seating surfaces and console
- 16-oz. color-keyed cut-pile carpeting
- Glove box and ashtray lights
- Dual covered visor mirrors
- Carpeted package tray
- Luxury steering wheel with center horn blow
- Deep-well trunk

- Luggage compartment light
- Air conditioner (manual)
- Tinted glass (complete)
- Wide bodyside moldings
- Bodyside and decklid stripes
- Electronic digital clock
- Rear window defroster
- Light Group
- Dual electric remote-control mirrors

- Electronic AM/FM stereo radio with cassette tape player
- Speed control
- Tilt steering wheel
- Styled road wheels
- Power side windows
- Interval windshield wipers

PREFERRED EQUIPMENT PACKAGES

Ordering your Thunderbird is easy with Preferred Equipment Packages. Here's how it works: (1) Choose your series (Thunderbird, élan, Turbo Coupe). (2) Select the Preferred Equipment Package with the features you want from the charts at right. The entire ordering procedure is greatly simplified. And you save money on each package compared to the total traditional price if the options were purchased separately. Preferred Equipment Packages are subject to change. For the latest information, consult your Ford Dealer.

Thunderbird

	151A	152A
Air conditioner (manual)	•	•
Tinted glass (complete)	•	•
Wide bodyside moldings	•	•
Bodyside and decklid stripes	•	•
Electronic digital clock	•	•
Rear window defroster	•	•
Light Group	•	•
Dual electric remote control mirrors	•	•
Electronic AM/FM stereo radio with cassette player	•	•
Speed control	•	•
Tilt steering wheel	•	•
Styled road wheels	•	•
Power side windows	•	•
Interval windshield wipers	•	•
Diagnostic alert lights	•	•
Illuminated Entry System	•	•
Power Lock Group	•	•
Dual illuminated visor mirrors	•	•
Carpeted front floor mats	•	•
Power radio antenna	•	•
Autolamp System	•	•
Electronic instrument cluster	•	•
Keyless Entry System	•	•
Dual 6-way power front seats	•	•
Power front seat recliners	•	•
Pivoting front vent windows	•	•

Thunderbird élan

	161A	162A
Air conditioner (manual)	•	•
Cornering lamps	•	•
Rear window defroster	•	•
Power Lock Group	•	•
Electronic AM/FM stereo radio with cassette player	•	•
6-way power driver seat	•	•
Speed control	•	•
Tilt steering wheel	•	•
Leather-wrapped steering wheel	•	•
Styled road wheels	•	•
Air conditioner (electronic climate control)	•	•
Autolamp System	•	•
Carpeted front floor mats	•	•
Illuminated Entry System	•	•
Electronic instrument cluster	•	•
Keyless Entry System	•	•
Power radio antenna	•	•
Dual 6-way power front seats	•	•

Thunderbird Turbo Coupe

	157A	158A
Air conditioner (manual)	•	•
Rear window defroster	•	•
Electronic AM/FM stereo radio with cassette player	•	•
Speed control	•	•
Tilt steering wheel	•	•
Power Lock Group	•	•
6-way power driver seat	•	•
Air conditioner (electronic climate control)	•	•
Autolamp System	•	•
Carpeted front floor mats	•	•
Pivoting front vent windows	•	•
Keyless Entry System	•	•
Power radio antenna	•	•
Dual 6-way power front seats	•	•

FEATURES AND OPTIONS

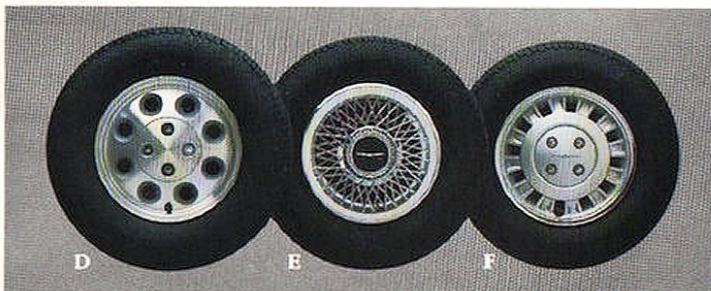
Notable standard features and options for each Thunderbird series are listed on the facing page. In selecting the options you want, compare your choices with the Preferred Equipment Packages on page 19. You're likely to find that most of the equipment you want has already been conveniently included for you in a particular package. Options and their availability are subject to change during the year. Your Ford Dealer can advise you of current status.

The electronic instrument cluster

The electronic instrument cluster option includes sophisticated liquid crystal display readouts for speed, rpm, and other vehicle functions. It's detailed on page 9.

Tripminder® computer

The Tripminder® computer option offers travel data at your fingertips: average trip speed, distance covered per gallon of fuel used, instantaneous fuel economy, and total fuel used. It also provides the date, time, and elapsed trip time and distance. English or metric readout.



Illustrated Options: (A) Electronic AM/FM stereo with cassette tape player (B) Keyless entry system (C) Pivoting front vent windows (D) Alloy Wheels (E) Locking wire-style wheel covers (F) Styled road wheels (G) Tot-Guard (available at Ford Dealers)



Thunderbird Features and Options			
	Thunderbird	élan	Turbo Coupe
ENGINEERING			
3.8 liter 2V V-6 engine	•	•	•
2.3 liter OHC turbocharged engine	•	•	•
Heavy-duty battery	•	•	•
5.0 liter EFI V-8 engine/Automatic Overdrive transmission	•	•	•
Automatic Overdrive transmission	•	•	•
SelectShift automatic transmission	•	•	•
5-speed manual overdrive transmission	•	•	•
Variable-ratio power rack and pinion steering	•	•	•
Power front disc/rear drum brakes	•	•	•
Modified MacPherson strut front suspension with gas-pressurized struts	•	•	•
4-bar link rear suspension with gas-pressurized shocks	•	•	•
Full analog instrumentation, including tachometer with boost and overboost lights	•	•	•
Traction-Lok axle	•	•	•
P205/70R14 all-season BSW tires	•	•	•
P225/60VR15 BSW performance tires	•	•	•
Automatic parking brake release	•	•	•
EXTERIOR			
Dual electric remote-control mirrors	•	•	•
Wide bodyside moldings	•	•	•
Dual bodyside and decklid accent stripes	•	•	•
Front fascia with air dam and Marchal® fog lamps	•	•	•
Luxury wheel covers	•	•	•
15" x 7" aluminum wheels	•	•	•
INTERIOR			
Reclining split bench seats with cloth seating surfaces and console	•	•	•
Individual seats with full-length console	•	•	•
Articulated seats with full-length console	•	•	•
Rear seat center folding armrest	•	•	•
Performance instrumentation	•	•	•
Quarter panel courtesy lights	•	•	•
Luxury steering wheel with center horn blow	•	•	•
"Soft feel" sport steering wheel	•	•	•
Quartz electric clock	•	•	•
Electronic digital clock	•	•	•
Dual illuminated visor mirrors	•	•	•
Electronic AM/FM stereo radio (may be deleted for credit)	•	•	•
Interval windshield wipers	•	•	•
Power windows	•	•	•
Tinted glass, complete	•	•	•
Diagnostic alert lights	•	•	•
Light Group ⁽¹⁾	•	•	•
Remote fuel door release	•	•	•
• Standard ■ Optional			

ENTERTAINMENT SYSTEMS	Thunderbird	élan	Turbo Coupe
Electronic AM/FM stereo radio with cassette player	•	•	•
Premium Sound System	•	•	•
APPEARANCE			
Leather-wrapped steering wheel	•	•	•
Two-Tone paint with tape stripes	•	•	•
Clearcoat metallic paint	•	•	•
COMFORT			
Air conditioning, electronic climate control	•	•	•
Air conditioning, manual control	•	•	•
Pivoting vent windows	•	•	•
Ultrasoft leather trim	•	•	•
CONVENIENCE			
Autolamp System (automatic headlamp dimming)	•	•	•
Cornering lamps	•	•	•
Speed control	•	•	•
Electronic instrument cluster (see page 9)	•	•	•
Tripminder® computer (see page 20)	•	•	•
Illuminated Entry System	•	•	•
Keyless Entry System (includes Illuminated Entry System)	•	•	•
Tilt Steering Wheel	•	•	•
Rear window defroster	•	•	•
PROTECTION			
Anti-Theft system	•	•	•
Front floor mats	•	•	•
Front license plate bracket	•	•	•
POWER ASSISTS			
Power Lock Group ⁽²⁾	•	•	•
Power moon roof ⁽³⁾	•	•	•
Power radio antenna	•	•	•
6-way power driver's seat	•	•	•
Dual 6-way power seats	•	•	•
Power seat recliners	•	•	•
WHEELS/WHEEL COVERS			
Locking wire-style wheel covers	•	•	•
Styled road wheels	•	•	•
Alloy wheels	•	•	•

⁽¹⁾Includes dual beam map light, instrument panel courtesy lights, and engine compartment light.

⁽²⁾Includes power door locks, remote-control electric decklid release in glove box, and remote-control fuel filler door release (standard with Turbo Coupe).

⁽³⁾Delayed availability. See your Ford Dealer for details.

Colors & Trims

Interior Trim Colors						Exterior Paint Colors
Medium Grey	Raven Charcoal*	Canyon Red	Regatta Blue	Sand Beige	Taupe	
						Black
x	x	x	x	x	x	Bright Canyon Red
						Midnight Regatta Blue
x	x		x	x		Sand Beige
						Dark Clove Brown
x	x	x	x	x	x	Oxford White
						Thunderbird and élan Optional Clearcoat Colors
						Medium Grey Metallic
x	x	x	x			Silver Metallic
x	x	x	x			Medium Canyon Red Metallic
x	x			x		Midnight Wine
x	x	x				Regatta Blue Metallic
				x		Light Taupe Metallic
x	x	x	x			Deep Shadow Blue Metallic
					x	Sand Beige Metallic
						Turbo Coupe Colors
						Black**
x	x	x				Medium Grey Clearcoat**
x	x	x				Silver Clearcoat**
x	x	x				Bright Canyon Red
x	x	x				Medium Canyon Red Clearcoat**
					x	Regatta Blue Clearcoat
					x	Sand Beige Clearcoat**
x	x	x				Oxford White

*Available only with élan and Turbo Coupe articulated seats.

**Includes lower charcoal accent treatment.



Some of these paint and trim colors are shown in this catalog. On the printed page, of course, colors are at best only representative of the originals. Your Ford Dealer can show you actual samples of the paint colors and trim materials presented above.



Ford Motor Company strongly encourages all passengers to use their safety belts.

In all Ford cars, outboard front seat lap and shoulder belts have automatic retractors and comfort regulators. Outboard rear seat positions also have lap belts with retractors.

Ford urges the use of child and infant restraints, as required in all states. Ford's easy-to-install Tot-Guard (for children 20 to 50 pounds) and Infant Carrier (for children up to 20 pounds) are available at all Ford Dealers. If a child restraint requires a top-tether, Ford cars provide for attachment of an anchor at each rear outboard seating position.

Ford Lifeguard Design Safety Features

Vehicle operation

- Safety rim wheels and load-rated tires
- Split hydraulic brake system with warning light
- Corrosion-resistant brake lines
- Flash-to-pass headlamps
- Turn indicator with lane-changing signal feature
- Hazard warning flasher
- Backup lights
- Side marker lights
- Parking lamps coupled with headlamps
- High-mount brake lamp on package tray
- Variable speed windshield wipers
- Windshield washers

- Outside rearview mirror
- Glare-reduced instrument panel, windshield wiper arms and windshield pillars
- Uniform transmission shift quadrant (on all cars equipped with automatic transmission)
- Continuously variable control illumination intensity (instrument panel lighting)
- Safety hood latch system
- Function-rated windshield defroster system

Occupant protection

- Safety-designed front end structure
- Safety-designed roof structure
- Steel guard rails in side doors
- Double yoke safety door latches and safety hinges
- Integral lap and shoulder belts with automatic retractors for occupants of front seats

- Positive seat belt fastening reminder warning light and chime for the driver's seat
- Lap belts for rear seating positions with retractors for rear outboard occupants
- Energy-absorbing steering column and steering wheel
- Energy-absorbing armrests and safety-designed door handles
- Energy-absorbing instrument panel with padding for right front passenger
- Energy-absorbing sun visors
- Energy-absorbing front seat back tops
- Self-locking front seat backs
- Head restraints for front outboard occupants
- Safety glove box latch
- Inside yieldaway rearview mirror
- Impact-absorbing laminated safety glass windshield
- Flame resistant interior materials
- Safety-designed radio control knobs and push buttons



Special quality steps: Corrosion protection

Ford takes tough measures to protect its cars against the damaging effects of corrosion. Galvanized steel is used for important underbody and structural parts. Pre-coated steel, featuring corrosion inhibitors, is also used in major body panels. Special treatments are applied to selected areas of the body structure.

Scheduled maintenance

Here are some examples of scheduled maintenance intervals for the 1986 Thunderbird. For complete maintenance recommendations, refer to the Thunderbird Owner Guide.

Engine oil change	each 7,500 miles*
Spark plug change	each 30,000 miles**
Air filter replacement	each 30,000 miles
Engine coolant replacement	each 30,000 miles or 3 years

*5,000 miles with Turbo Coupe. **15,000 miles with Turbo Coupe.

Measurements

Wheelbase	104.0"
Length	197.6"
Height	53.2"
Width	71.1"
Tread: front	58.1"
Tread: rear	58.5"
Trunk volume (cu. ft.)	14.6
Fuel capacity (gal.)	22.1*
Curb weight (lb.)	3,089**
Passenger capacity	5

*18.2 gallons with Turbo Coupe. **Standard vehicle. Turbo Coupe: 3,172 lb.

5-mile-an-hour bumpers

Bumpers on Thunderbird are designed to protect lamps, cooling system, exhaust and other body components in the event of a minor impact.

While some manufacturers equip their cars with bumpers that just meet the 2½ mph federal standards, Ford equips Thunderbird and every other car it makes, with bumpers designed to absorb impacts of 5 mph.

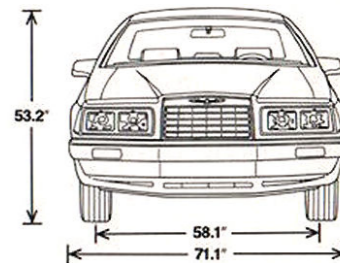
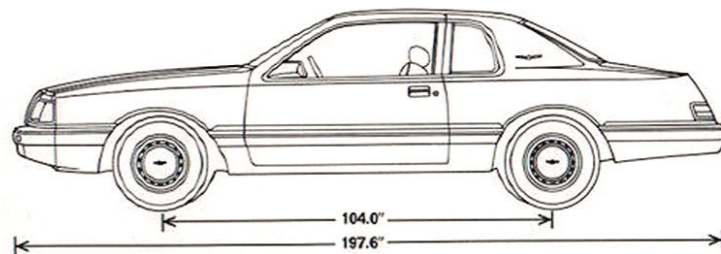


Participating Ford Dealers are now offering the Lifetime Service Guarantee, which guarantees their work on your Ford vehicle for as long as you own it. This means that the covered repair is paid for once — and never again. If it ever has to be fixed again, the repairing dealer will fix it free. Free parts. Free labor. Even if the car

"Ask your Ford Dealer"

Following publication of this catalog, certain changes in standard equipment, options, prices and the like, or product delays, may have occurred which would not be included in these pages. Your Ford Dealer is your best source for up-to-date information.

SAFETY AND OWNER INFORMATION



is kept a lifetime. It doesn't matter where it was purchased, or whether it's new or used; the work is still covered by the repairing dealer.

This limited warranty covers vehicles in normal use. Items not covered are routine maintenance parts, belts, hoses, sheet metal, and upholstery. Ask to see this guarantee when you visit your participating Ford Dealer.



The optional Ford Extended Service Plan covers major components on new Ford cars and light trucks for longer than the vehicle's basic warranty. The cost of this added protection is so moderate that it could pay for itself the first time you need it. Your Ford Dealer has full details.



Genuine Ford and Motorcraft original equipment replacement parts meet the same high standards as those installed in production. They are your best assurance of quality and long-term satisfaction.

Ford-paid repair programs after the warranty period

Sometimes Ford offers adjustment programs to pay all or part of the cost of certain repairs. These programs are intended to assist owners and are in addition to the warranty or to required recalls. Ask Ford or your dealer about such programs relating to your Ford or Lincoln-Mercury vehicle.

To get copies of any adjustment program for your vehicle or the vehicle of interest to you: Call Ford toll-free at 1-800-241-3673. Alaska/Hawaii call 1-800-241-3711 and in Georgia call 1-800-282-0959.

Or write Ford at:

Ford Customer Information System
Post Office Box 95427
Atlanta, Georgia 30347

We'll need your name and address; year, make and model vehicle, as well as engine size; and whether you have a manual or automatic transmission.

Technical service bulletins

All vehicles need repairs during their lifetime. Sometimes Ford issues technical service bulletins (TSBs) and easy-to-read explanations describing unusual engine or transmission conditions which may lead to costly repairs, the recommended repairs, and new repair procedures. Often

a repair now can prevent a more serious repair later. Ask Ford or your dealer for any such TSBs and explanations relating to your Ford or Lincoln-Mercury vehicle.

To get copies of these technical service bulletins and explanations for your vehicle or the vehicle of interest to you: Call Ford toll-free at 1-800-241-3673. Alaska/Hawaii call 1-800-241-3711 and in Georgia call 1-800-282-0959.

Or write Ford at:

Ford Customer Information System
Post Office Box 95427
Atlanta, Georgia 30347

We'll need your name and address; year, make and model vehicle, as well as engine size; and whether you have a manual or automatic transmission.

Options availability

Options shown or described in this catalog are available at extra cost and may be offered only in combination with other options or subject to additional ordering requirements or limitations.

Product changes

Ford Division reserves the right to change product specifications at any time without incurring obligations.

Buy or lease a new Thunderbird

Have you driven a Ford...lately?



THUNDERBIRD

