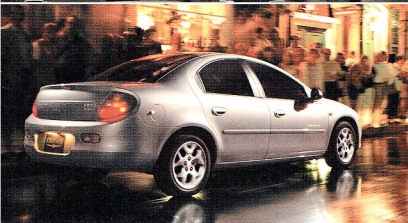
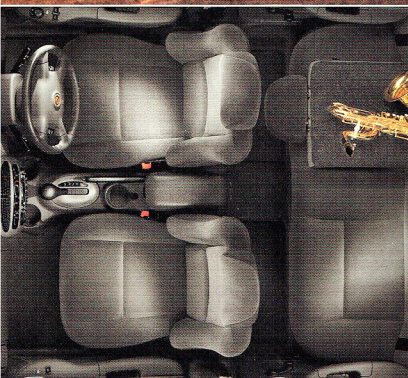


CHRYSLER





CHRYSLER NEON

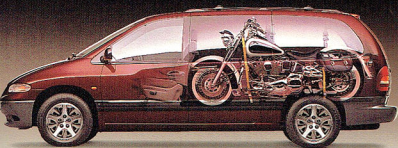
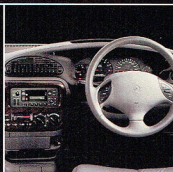
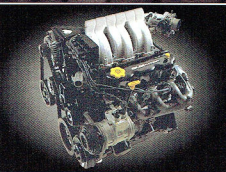


The Chrysler Neon puts the exhilaration back into driving. It starts with the ultra-responsive 2.0 litre, 98kW 16-valve engine which provides exciting performance. And with precise steering and sporty handling characteristics, you'll be looking forward to curves in the road. The Neon also utilises Chrysler's unique cab-forward design, which provides an unusually roomy interior. Equipment is exceptional, too, with standard features that include dual airbags, air-conditioning, 5-speed manual transmission, power mirrors, power steering and central locking. Practicalities that make Neon an exciting proposition to own.

	SE	LE
• 2.0 litre 98 kW 16-valve engine	std	std
• Air-conditioning	std	std
• Driver and front passenger airbags	std	std
• Automatic transmission	opt	opt
• Unique cab-forward design	std	std
• Power retractable mirrors	std	std
• Power front windows	std	std
• Central locking	std	std
• Power steering	std	std
• Side intrusion impact protection	std	std
• Tilt-adjustable steering	std	std
• Tachometer	std	std
• 60/40 split fold rear seats	std	std
• Sentry key engine immobiliser	std	std
• 6 Speaker stereo system	std	std
• Colour-coded package	std	std
• Remote Keyless Entry system	-	std
• Four wheel disc brakes with ABS	-	std
• Traction Control	-	std
• Premium cloth seats	-	std
• Front fog lamps	opt	opt
• Alloy wheels	opt	opt
• 3 years/60,000kms warranty	std	std



CHRYSLER VOYAGER



The Chrysler Voyager breaks all the rules. With a powerful 3.3 litre, 116kW V6 engine and car-like handling, Voyager offers the driving enjoyment of a performance vehicle. Yet the superior design and refinements such as air-conditioning, dual airbags, cruise control and ABS anti-lock brakes are the equal of a luxury car. The Voyager is practical too. The spacious interior allows 7 people to travel in comfort. It also features not one but two sliding doors, making loading the family and cargo easier than ever. Load carrying is also easy, thanks to the unique Easy-Out Roller Seats™. Finally, for those who want more of everything, there's the long-wheelbase Grand Voyager, with Quad-Command seats and even more luggage space. So if you ever thought spacious vehicles were boring, it's time to test drive a Voyager.

	Voyager SE	Grand Voyager SE	Grand Voyager LE	Grand Voyager LX
• 3.3 litre SMPI 116kW V6 engine	std	std	std	std
• Automatic transmission	std	std	std	std
• Dual airbags	std	std	std	std
• Four wheel ABS braking	std	std	std	std
• Air-conditioning	std	std	std	std
• Cruise control	std	std	std	std
• Power windows and mirrors	std	std	std	std
• Remote central locking	std	std	std	std
• Removable rear seats	std	std	std	std
• 2 sliding rear doors	std	std	std	std
• Quad-Command seats	-	std	std	std
• 4 speaker CD compatible stereo	std	std	std	-
• Infinity™ 10-speaker sound system	-	-	-	std
• Leather upholstery	-	-	-	std
• Power front seats	-	-	std	std
• Alloy wheels	-	-	std	std
• Fog lamps	-	-	std	std
• Roof racks	-	-	std	std
• Colour-coded package	-	-	-	std
• 3 years/60,000kms warranty	std	std	std	std

PT CRUISER

ARRIVING MID 2000



Chrysler PT Cruiser is built on the belief that while all cars appeal to our practical side, the great ones also appeal to our passionate side.

PT Cruiser re-invents excitement, combining a daring design based on an American classic with the Chrysler heritage of engineering excellence.

The raised beltline, sculptured bonnet and mudguards, and pronounced grille reflect true style and character, yet satisfy the contemporary requirements of today's world.

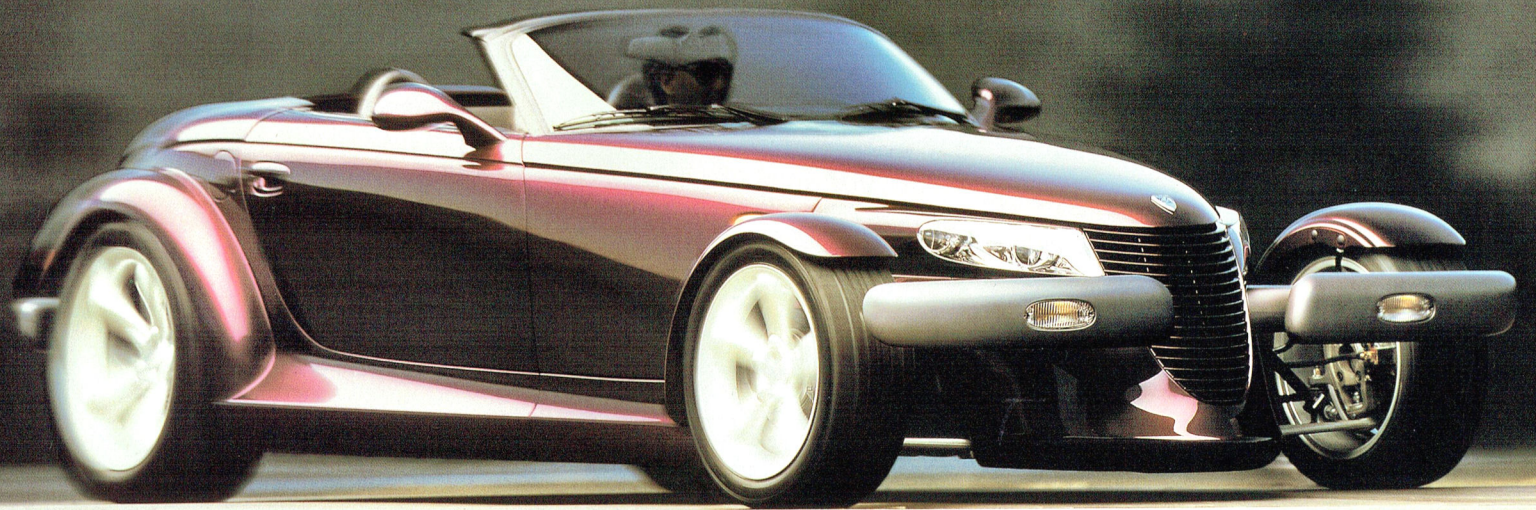
Inside is a relaxed, airy environment with plenty of seating options for people and cargo. For those who want style and versatility, PT Cruiser has a character all its own.

CHRYSLER



For your nearest Chrysler Dealer,
call Toll Free 1800 680 044 or visit our website
at www.chrysler.com.au

All specifications and equipment are subject to availability and may change.
Please consult your authorised dealer for current specifications and equipment.



Chrysler Prowler



What major car company is mad enough to build a full-blown hot rod? A car maker truly passionate about cars. The Chrysler Prowler is the epitome of a car built by enthusiasts for enthusiasts. "It's for real, and you either get it or you don't" said Chrysler Corporation Chairman Bob Eaton as he launched the production-approved Prowler in early 1996. We know it's not for everyone, but how couldn't you love this purple cruiser, as its 3.5 litre V6 pulls the tarmac from under you with a snap that would make any 'rodder' proud? Like the best handmade cars, there's a lot of innovation going on here too. Like the lightweight aluminium frame, and the Autostick 4-speed auto gearbox that'll hold on right through to the redline. The spirit of hot rodding - the art of crafting beautiful, individual machines - is alive and kicking in the form of the Chrysler Prowler. You either get it, or you don't.

- Engine - 3.5 litre 24 valve 60-degree SOHC V6
- Power - 160 kW @ 5800 rpm
- Torque 278 Nm @ 3100 rpm

- Transmission - Autostick electronic 4-speed automatic
- Suspension - Front: Double A arm. Rear: Four-link independent
- Dimensions - length 4191 mm, width 1930 mm, height 1295 mm

- Wheelbase - 2870 mm
- Wheels - 17-inch front, 20-inch rear, cast aluminium
- Brakes - 4-wheel ventilated disc

C H R Y S L E R



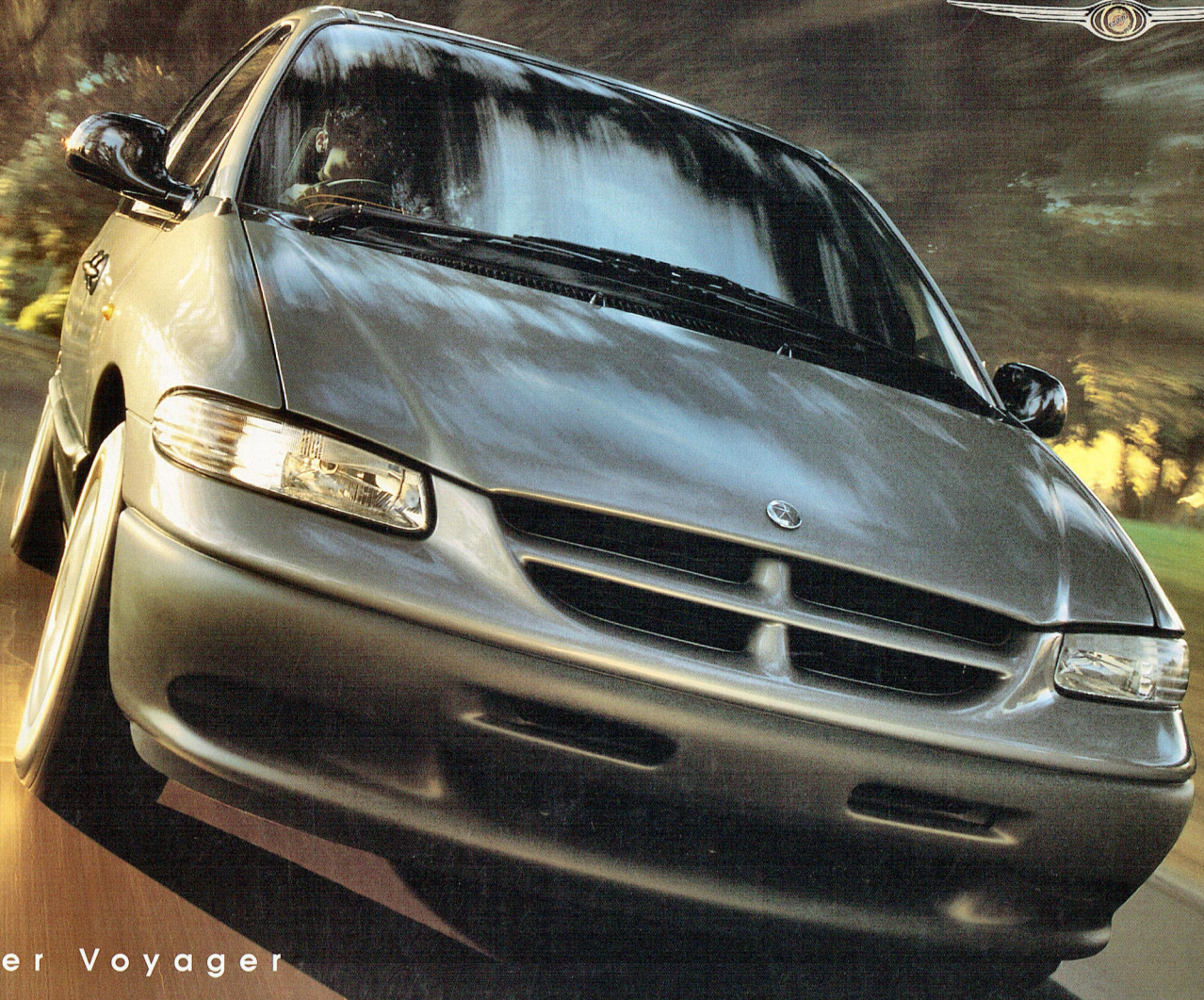
Chrysler Viper



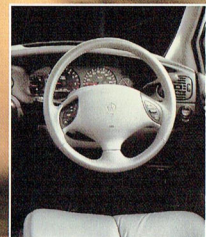
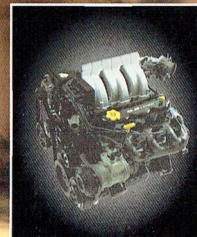
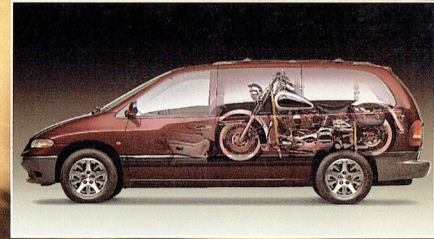
Every which way you look at it, the Chrysler Viper GTS is one of the most awe-inspiring cars on the planet. Carrying on in the tradition of the great American endurance racers of the past, like the Ferrari-beating Shelby Cobra, the Viper GTS is simply astonishing in presence and performance. With its dramatically sleek and aggressive styling, the Viper will have jaws dropping all over town. But it's what's on the inside that counts, right? How about an 8.0 litre V10 producing 335kW (450hp) at 5200 rpm, and an incredible 664 Nm of torque at 3700 rpm? That's the highest of any American production vehicle by a long way, and the result is astounding. Accelerating in the Viper, as one motor journalist from *Motor Trend* put it "...can affect the rotation of the earth." Slammed into the leather-trimmed bucket seat, shifting through the surgically precise six speed gearbox, engine howling, you'll really know what it is to enjoy driving. And that's what the Chrysler Viper GTS is all about. The ultimate motoring experience.

- Engine – 8.0-litre, 90-degree V10
- Power – 335kW @ 5200 rpm, torque – 664 Nm @ 3700 rpm
- Transmission – six-speed manual
- Power to weight ratio – 4.65 kg/kW
- Suspension – independent coil springs, anti-roll bars
- Dimensions – length 4470 mm, width 1905 mm, height 1194 mm
- Wheelbase – 2444 mm
- Wheels – 17-inch cast aluminium
- Brakes – 330 mm vented disc (f&r)

C H R Y S L E R



Chrysler Voyager



The Chrysler Voyager breaks all the rules. With a powerful 3.3 litre, 116kW V6 engine and car-like handling, Voyager offers the driving enjoyment of a performance vehicle. Yet the superior design and refinements such as air-conditioning, dual airbags, cruise control and ABS anti-lock brakes are the equal of a luxury car. The Voyager is practical too. The spacious interior allows 7 people to travel in comfort. It also features not one but two sliding doors and unique Easy Out Roller Seats,SM making loading the family and cargo easier than ever. Finally, for those who want more of everything, there's the long-wheelbase Grand Voyager, with Quad-Command seats and even more luggage space. So if you ever thought spacious vehicles were boring, it's time to test drive a Voyager.

	Voyager SE	Grand Voyager SE	Grand Voyager LE Limited								
• 3.3 litre SMPI 116kW V6 engine	std	std	std	• Remote central locking	std	std	std	• Infinity 10-speaker sound system	-	-	std
• Automatic transmission	std	std	std	• Removable rear seats	std	std	std	• Alloy wheels	-	-	std
• Dual airbags	std	std	std	• 2 sliding rear doors	std	std	std	• Fog lamps	-	-	std
• Four wheel ABS braking	std	std	std	• 4 speaker CD compatible stereo	std	std	-	• Roof racks	-	-	std
• Air-conditioning	std	std	std	• Quad-Command seats	-	std	std	• Warranty 3 years/60,000kms	std	std	std
• Cruise control	std	std	std	• Leather upholstery	-	-	std				
• Power windows and mirrors	std	std	std	• Power front seats	-	-	std				

All specifications and equipment are subject to availability and may change. Please consult your authorised dealer on current specifications and equipment.

For your nearest Chrysler dealer, call Toll Free 1800 814 440