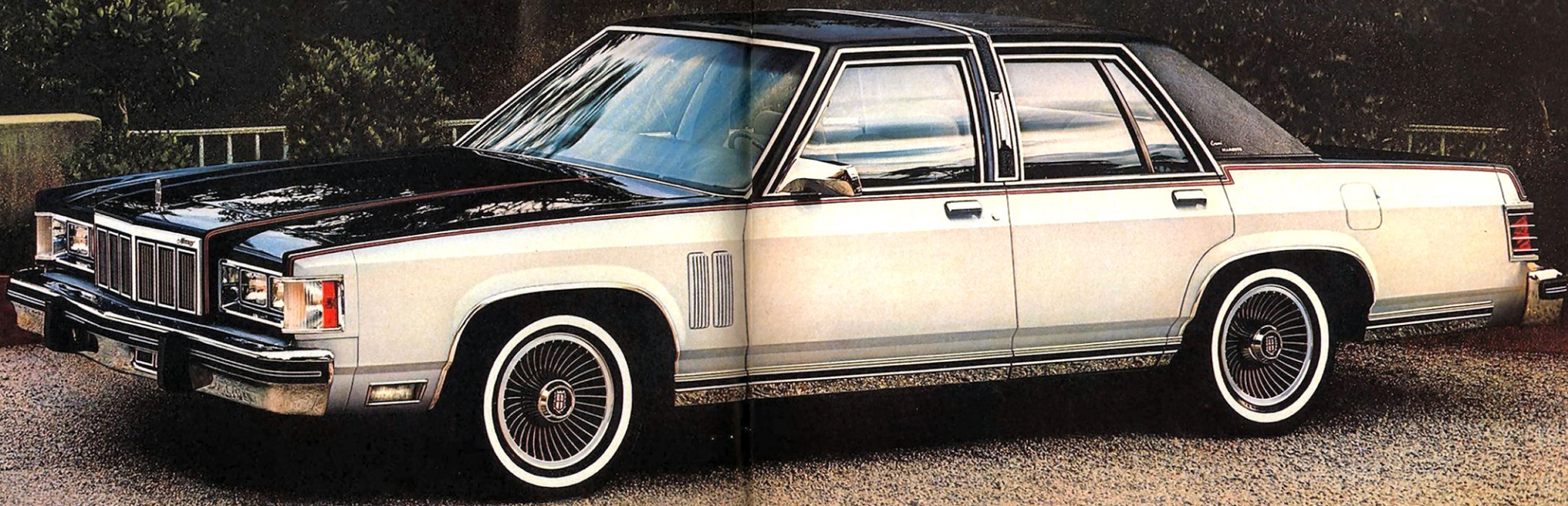


# MERCURY MARQUIS/80



TWIN HILLS MERCURY SALES LTD.  
10801 YONGE STREET  
RICHMOND HILL, ONTARIO  
L4C 3E3





## RIDE-ENGINEERED

### CONTENTS

Mercury Marquis	2, 10, 11
Mercury Grand Marquis	2, 4, 6
Mercury Marquis Brougham	8, 9
Grand Marquis Std. Features	7
Marquis Brougham Std. Features	8
Mercury Marquis and Marquis Meteor Std. Features	11
Marquis Station Wagons	12, 13
Marquis Wagon Std. Features	12
1980 Marquis Options	14, 15
Marquis Color Availabilities	16
Marquis Engineering	16
Marquis Model Availabilities	16

### 1980 MERCURY MARQUIS... DESIGNED FOR THE NEW DECADE.

Get behind the wheel of a 1980 Mercury Marquis and you'll experience the most scientifically designed automobile in Marquis history... a Marquis which offers a new standard of riding comfort in addition to the six-passenger spaciousness that is the Marquis heritage.

There is much that is new in this latest in a long line of fine Mercury automobiles. For example, Marquis lights your way into the eighties... with new Halogen headlamps that provide a brighter, whiter light in front than conventional headlamps. New bright

moldings that add a glow to decklid and taillamps. There are new options, too, that increase your pleasure in driving Marquis. An all-new automatic overdrive transmission (available with 5.0 litre engine). This new transmission features four speeds, with the fourth gear possessing an extremely low and efficient ratio for economical highway cruising and no loss in performance. There's also available an automatic headlamp on/off delay feature.

Mercury Marquis offers a wide choice of luxury levels, including station wagons. Shown above is the 1980 Mercury Grand Marquis four-door in Tu-tone black and silver. The ultimate in Marquis elegance, Grand Marquis is handsomely styled with a standard full vinyl roof (optional Landau

vinyl roof shown on above illustration available November 1979) coach lamps, deluxe wheel covers, and harmonizing bodyside paint stripes.

The X-ray view of the 1980 Marquis interior, shown right, graphically portrays Marquis' six-passenger spaciousness, as well as the impressive luggage capacity of its trunk with mini spare tire.



NOTE: Some items are optional. See notable standard features, measurements and colour code reference listed throughout this catalogue.



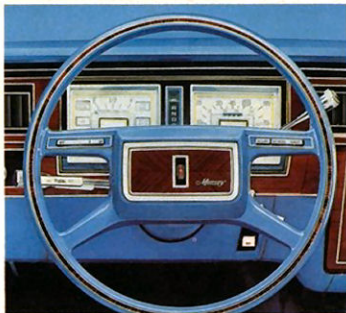
## 1980 MERCURY GRAND MARQUIS. INTERIOR ELEGANCE AND COMFORT.

The sumptuous interior of Grand Marquis is an invitation to relax in gracious surroundings. Its standard Twin Comfort Lounge seats with individual armrests, pictured below, are also available in optional leather with vinyl trim. Also note the complimentary door trim which is highlighted by woodtone appliques on upper door areas and carpeting on lower. The Grand Marquis instrument panel is also finished with rich-looking woodtone appliques and features the Grand Marquis Luxury Steering Wheel with optional "Tilt" feature and Speed Control option.

Standard equipment includes power windows, courtesy lights in door armrests, analog clock, and electronic warning chimes.

Note the attention-getting sculptured lines of the Grand Marquis 4-door shown right in dark blue metallic with an optional dark blue Landau roof, (available November 1979). Its size bespeaks comfort. Its assured stance suggests the kind of confidence you'll feel behind the wheel.

**Steering.** Marquis sedans have an overall steering ratio of 16.4:1 to provide desirable steering response.



Grand Marquis Instrument Panel



Optional electronic AM/FM Stereo Search Radio Option with Quad Tape capability

**Commanding view.** The seating position in Marquis, enhanced with extensive windshield glass area, gives you a wide-screen view of the road ahead.

**Insulation.** Marquis' deluxe sound package, with carpet and insulation bonded and moulded into one piece for good fit, helps reduce external noise and temperature extremes.

**Power Train.** Standard is the 5.0 litre (302 CID) V-8 engine and Select-Shift automatic transmission. An optional 5.8 litre (351 CID) V-8 is also available. An automatic over-drive transmission is available with the 5.0 litre engine.

NOTE: Some items are optional. See notable standard features, measurements and colour code reference listed throughout this catalogue.



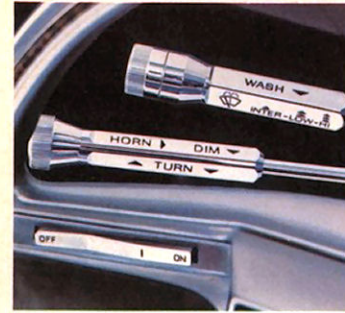
Grand Marquis standard interior with Twin Comfort Lounge Seats in Wedgewood blue luxury cloth







1980 Mercury Grand Marquis 2-door Sedan in optional Tu-tone grey and silver



Marquis' standard stalk-mounted controls

**1980 MERCURY  
GRAND MARQUIS  
TWO-DOOR. LUXURY IN THE  
COUPÉ CONFIGURATION.**

Pictured on the facing page is the elegant Mercury Grand Marquis two-door in a striking grey and silver Tu-tone paint. Note the glamorous touches provided by its standard Landau vinyl roof and coach lamps, its bodyside paint stripes and wide, black-and-bright lower bodyside mouldings and accent stripes. If your preference is a four-door, Grand Marquis offers a full or half vinyl roof along with the features of the two-door. (Half vinyl roof available November 1979).

An especially luxurious aura for the



Grand Marquis Twin Comfort Lounge seat interior in optional leather w/vinyl



1980 Mercury Grand Marquis 2-door

Grand Marquis interior is achieved with optional supple leather upholstery for its standard Twin Comfort Lounge seats, shown below in an attractive dove grey. Standard seating surfaces are in a comfortable, durable luxury cloth. Both the optional leather and standard cloth upholstery are available in five colours in addition to the illustrated dove grey: dark red, medium Wedgewood blue, pine green, sand and cordovan.

Among the more than sixty standard features that add to the pleasure of driving Marquis are the stalk-mounted controls shown above: one activates the windshield washer and wiper, while the second controls turn signals and horn.

**Grand Marquis special features in addition to Mercury Marquis and Marquis Meteor standard equipment listed on page 11:**

- Tinted glass
- Dual beam dome map light
- Electronic seat belt warning chimes
- Instrument panel and luggage compartment lights
- Power windows
- Sail-mounted left-hand remote control mirror
- Bright bodyside mouldings
- Hood, decklid and bodyside paint stripes
- Deluxe wheel covers
- Analog clock
- 18 ounce carpeting
- Colour-keyed deluxe seat belts
- Rear seat and door pull straps, and map pockets
- Carpeting on lower door panels
- Coach lamps
- Accent stripes on fender louvres
- Twin Comfort Lounge seats with centre armrest in luxury cloth
- Rear seat center armrest
- Luxury steering wheel
- Visor vanity mirror
- Seat side shields with woodtone appliqué
- Spare tire cover
- Fully carpeted luggage compartment trim
- Grand Marquis identification emblems.

NOTE: Some items are optional. See notable standard features, measurements and colour code reference listed throughout this catalogue.



## 1980 MERCURY MARQUIS BROUGHAM. GRACIOUS ELEGANCE FOR THE EIGHTIES.

The decor of the 1980 Marquis Brougham reflects a tradition of elegance that started with a coach designed by Europe's Baron Henry Peter Brougham over a century ago. Pictured on the opposite page is the two-door in optional Tu-tone pastel sand and sand metallic. Its standard Landau vinyl roof is in a harmonizing sand color. Full vinyl roof is standard on four-door Broughams. A sail-mounted left-hand remote control mirror and deluxe wheel covers are also standard.

The Marquis Brougham interior is an attractive invitation to relaxing comfort amid gracious surroundings. It features the Flight Bench seat with full-length armrest in sand tone Brougham cloth. The Flight Bench seat with optional power is also available with left- and right-hand recliners.

The Brougham interior decor is one of understated elegance. Door trim is colour-keyed and embellished with bright accents. The one-piece 18-ounce carpet covering front and rear passenger compartments is also colour-keyed to the upholstery, as are the deluxe seat belts and the four-spoke steering wheel. Instrument panel appliqués



Electronic digital day/date/elapsed time clock option are in a harmonizing woodtone. Power windows and an analog clock are among Marquis Brougham's standard convenience features.

There are, of course, many comfort, convenience and appearance options available to equip your Mercury Marquis to your personal taste. Above left you see the optional electronic digital day, date and elapsed time clock. Among the many other desirable options is the Illuminated Entry System which includes activation of a ring of light around the keyhole, and interior lights, merely by use of the outside door handles.

Marquis has always signified spaciousness. In addition to interior roominess there's Marquis' trunk capacity, shown

1980 Mercury Marquis Brougham 2-door sedan



Marquis spacious luggage compartment above right. No North American made car exceeds Marquis' space for so much luggage, a full 634 litres (22.4 cu. ft.).

### Marquis Brougham standard features in addition to Marquis and Marquis Meteor standard equipment on page 11 include:

- Instrument panel light
- Power windows
- Left-hand remote control, sail-mounted mirror
- Analog clock
- Flight Bench seat trimmed in deluxe cloth
- Deluxe door and quarter trim
- One-piece, 18 ounce carpeting
- Full-length armrest
- Colour-keyed deluxe seat belts
- Door pull straps
- 14 ounce carpeting on lower door panels
- Seat back side shields on 2-door models
- Two rear seat ashtrays
- Luggage compartment light
- Full vinyl roof on 4-door, Landau vinyl roof on 2-door
- Wide, bright lower bodyside moulding
- Bright door frames
- Deluxe wheel covers
- Hood and decklid paint stripes
- Brougham nameplate on decklid



Marquis Brougham Flight Bench seat interior with deluxe cloth



NOTE: Some items are optional. See notable standard features, measurements, and color code reference listed throughout this catalog.





1980 Mercury Marquis 4-door sedan

### 1980 MERCURY MARQUIS AND MARQUIS METEOR. EYE PLEASING. BUDGET PLEASING.

Mercury Marquis recognized the needs of the eighties before the start of the new decade. It is an automobile sized and built with the help of modern science... with the styling excellence and six-passenger comfort that is a Marquis tradition... more front and rear shoulder and hip room and more luggage capacity than 1979 Cadillac deVille.

The more than sixty standard features for all 1980 Mercury Marquis Meteor models include:

- 5.0 litre (302 CID) V-8 engine
- Select-Shift automatic transmission
- Power steering
- Electric rear window defroster
- Front disc, rear drum power brakes
- Low profile radial tires
- Mini-spare tire
- Concealed electric windshield wipers
- Four-bar link rear suspension
- Pleated bench seat trimmed in Dublin cloth or Ruffino vinyl
- Dual pod instrument cluster
- Steering column-mounted stalk controls for washer/wiper, high/low headlamp beam, horn and turn signals
- Nylon cut-pile carpeting
- Four-spoke colour-keyed steering wheel
- Glove box light
- Door lock controls in front door armrest
- Fender louvres
- Bright belt, roof, drip and backlite mouldings
- Front bumper guards
- Wraparound taillamps with integral side marker lights
- Dual rectangular headlamps
- Bright headlamp and parking lamp doors



Marquis standard Flight Bench seat

Marquis standard features in addition to Marquis Meteor standard equipment listed on this page:

- Flight Bench seat in cloth or vinyl
- Woodgrain instrument panel appliqué
- Seat cushion side shields
- Rocker panel moulding
- Bright wheelip mouldings
- Full wheel covers
- Bright rear hood mouldings

Standard and optional features for Mercury Marquis models all add to comfort, convenience and appearance. Pictured below, is the standard sail-mounted outside rear view mirror. At left is the optional Electronic AM/FM Search Radio, one of eight available radio options. At right you see the optional

Automatic Temperature Control air conditioner. A comprehensive list of Marquis options will be found on pages fourteen and fifteen.

NOTE: Some items are optional. See notable standard features, measurements, and color code reference listed throughout this catalog.



Optional Electronic AM/FM Search Radio



Standard sail-mounted outside rear view mirror



Optional Automatic Temperature Control air conditioning

Marquis Dimensions	2-door Sedans	4-door Sedans	4-door Wagons
Overall Length	5385mm (212.0")	5385mm (212.0")	5537mm (218.0")
Overall Width	1981mm ( 78.0")	1981mm ( 78.0")	1981mm ( 78.0")
Wheelbase	2903mm (114.3")	2903mm (114.3")	2901mm (114.2")
Wheel Tread—Front	1580mm ( 62.2")	1580mm ( 62.2")	1580mm ( 62.2")
—Rear	1575mm ( 62.0")	1575mm ( 62.0")	1575mm ( 62.0")
Head Room—Front	963mm ( 37.9")	963mm ( 37.9")	983mm ( 38.7")
—Rear	945mm ( 37.2")	945mm ( 37.2")	996mm ( 39.2")
Leg Room—Front (max.)	1069mm ( 42.1")	1069mm ( 42.1")	1069mm ( 42.1")
—Rear (min.)	1029mm ( 40.5")	1029mm ( 40.5")	1001mm ( 39.4")
Hip Room—Front	1555mm ( 61.2")	1555mm ( 61.2")	1555mm ( 61.2")
—Rear	1473mm ( 58.0")	1445mm ( 56.9")	1377mm ( 54.2")
Shoulder Room—Front	1567mm ( 61.7")	1567mm ( 61.7")	1567mm ( 61.7")
—Rear	1549mm ( 61.0")	1567mm ( 61.7")	1567mm ( 61.7")
Luggage capacity with Mini-Spare Tire (litres/cu. ft.)	634 ( 22.4 )	634 ( 22.4 )	—
Station Wagon Cargo Space			
Behind Front Seat (litres/cu. ft.)	—	—	2602 ( 91.9 )
Behind Rear Seat (litres/cu. ft.)	—	—	1512 ( 53.4 )

1980 Mercury Marquis Meteor 4-door sedan



**MERCURY MARQUIS  
STATION WAGONS.  
PLEASING.  
PLEASURABLE.  
PRACTICAL.**

Mercury Marquis offers you a choice in station wagon luxury: The elegant Marquis Colony Park (shown at the top of the facing page), the Marquis Station Wagon, and the Marquis Meteor Station Wagon (shown at the bottom of the facing page). All offer the practical versatility of a station wagon that provides six-passenger comfort and a spacious cargo area. Total interior volume is a substantial 4700 litres (166 cu. ft.). Cargo capacity alone is 2602 litres (91.9 cu. ft.) behind the front seat.

When you choose the Marquis Colony Park Station Wagon you become the proud owner of a station wagon designed with both beauty and practicality in mind. The full length of its bodyside, and the tailgate section, feature appliques in rosewood colour with matching bright and woodtone rails.

One of the many Marquis wagon convenience features is the three-way door/gate pictured below. It is shown, left-to-right: (1) opening out with the power window down; (2) opening out with the power window up; and (3) opening down so that the gate is level with the load floor for extra platform length. The diagram, below right, reveals the significant cargo-loading dimensions of the Mercury Marquis station wagons. Especially suited for added family comfort are the optional removable, dual facing rear seats shown below.

The interior of your Marquis wagon is designed to surround you with the feel of comfort and the look of luxury. Shown above in pine green leather and vinyl is the



Optional wagon dual facing rear seats (removable)



Marquis wagon 3-way door/gate



Colony Park Grand Marquis Decor Option Twin Comfort Lounge seat

Colony Park Grand Marquis Decor Option featuring Twin Comfort Lounge seats.

**Marquis and Marquis Meteor Station Wagon standard features which vary from pertinent standard equipment for Marquis and Marquis Meteor sedans on page 11:**

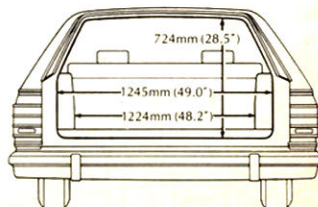
- Three-way door/gate
- Power tailgate window
- Heavy-duty frame
- Conventional spare tire/wheel
- Integral backup lights and taillamps
- Bright and black tailgate window moulding
- Rear bumper step pad
- Lockable stowage compartment
- Removable load floor carpet
- Flight Bench seat in vinyl (Marquis)
- Pleated Bench seat in vinyl (Marquis Meteor)



**Colony Park standard features in addition to Marquis Wagon standard features:**

- Power windows
- Full-length bodyside and tailgate rosewood-tone appliques with matching bright and woodtone rails
- Sail-mounted left-hand remote control mirror
- Bright door frames
- Coach lamps
- Deluxe wheel covers
- 18 ounce passenger floor carpet
- Cargo compartment light
- Tailgate door opening light switch
- Analog clock
- Deluxe door and seat trim
- Flight Bench seat in deluxe vinyl
- Dual instrument panel courtesy lights
- Full-length door armrests with pull straps

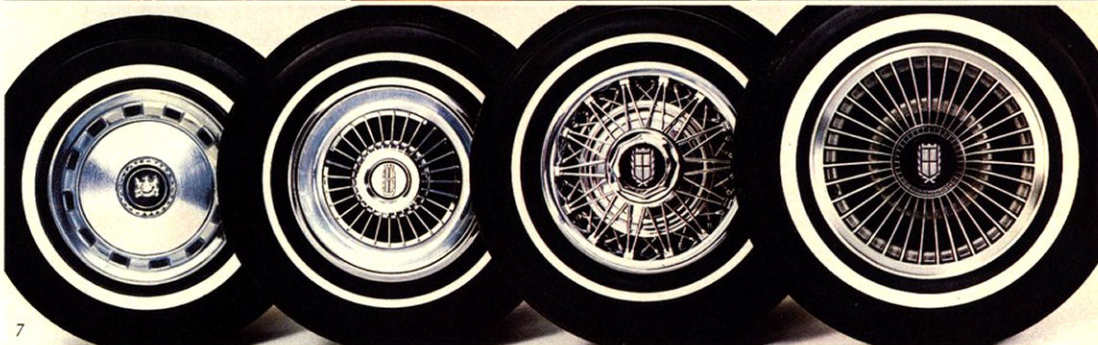
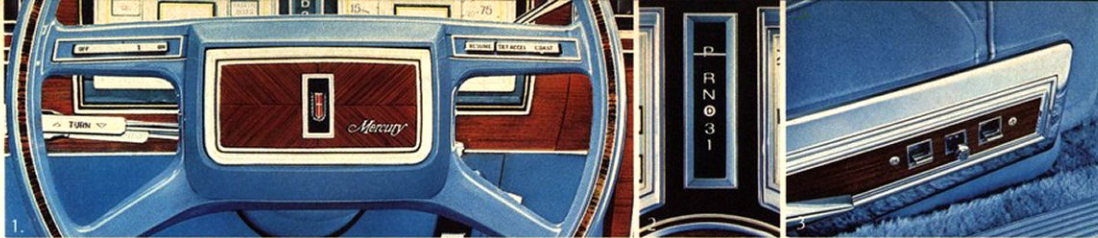
NOTE: Some items are optional. See notable standard features, measurements, and color code reference listed throughout this catalog.



1980 Mercury Marquis Meteor Station Wagon





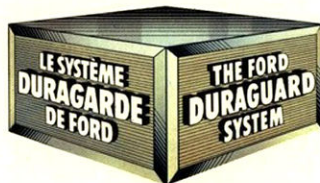


### CORROSION PROTECTION

All Marquis cars are protected with the DURAGUARD System, which includes 7 processes built in at the factory as standard equipment, to provide corrosion protection as follows:

- precoated steel on doors, quarter panels and other selected areas;
- galvanized steel on rocker panels, selected cowl tops and underbody parts;
- vinyl sealer on the underside of rear wheelhouses;
- phosphate coating on the entire car body after a super cleaning process;
- electrocoat process to apply corrosion resistant primer paint, also on the entire body;

- aluminized wax sprayed into hard-to-reach lower body areas, the inside surfaces of doors and quarter panels;
- protective vinyl coating on the lower bodyside for resistance to stone chipping and road abrasion.



The DURAGUARD System is backed by a no-extra charge 36-month unlimited distance manufacturer's warranty against corrosion perforation. This warranty, transferable to succeeding owners during this warranty period, covers the cost of both labour and materials for repair of perforation of parts caused by corrosion. Exhaust system components are excluded. The basic 12-month/20,000 kilometre warranty covers corrosion, other than perforations, that are due to defective factory materials or workmanship. Ask your dealer for details.

### WORTHY OPTIONS TO PERSONALIZE YOUR MARQUIS.

With respect to extra-cost optional equipment, make certain you specify the type of equipment you desire on your vehicle when ordering it from your dealer. Before taking delivery of the vehicle, we suggest that you verify that it includes the optional equipment you ordered, or if there are changes they are acceptable to you. Some options have restricted availability or require other options as a requirement of availability. See your dealer for details.

1. Speed Control. Option includes Luxury Steering Wheel and "resume" feature for Speed Control.
2. Integral Automatic Overdrive Transmission. New for 1980. Designed to help conserve fuel.
3. Twin Comfort Lounge seats with six-way power. Available with six-way power on driver's side only or driver and passenger sides. Also with or without driver's side or driver and passenger recliners.
4. Tilt Steering Wheel. Permits steering wheel adjustment for driver convenience. Option includes Luxury Steering Wheel.
5. Illuminated Entry System. Ring of light around key hole and interior lights are activated by outside door handle.
6. Citizen's Band Radio, 40-channel integral mounting. Includes detachable microphone.
7. Wheel and Wheel Cover Availabilities. Left to right: Standard Wheel Covers with optional 15" tires and wheels, Luxury Wheel Covers, Wire Wheel Covers, 15" Cast Aluminum Turbine Spoke Wheels.



#### The Ford Extended Service Plan

When you're choosing options for your Mercury Marquis, consider the merits of ordering the Ford Extended Service Plan. Your dealer has full details. It provides extended repair cost protection, as specified, for parts and labour, for repairs to major components of the mechanical and electrical systems. The plan is offered by Ford Motor Company of Canada, Limited, and is honoured by participating Ford and Mercury dealers throughout Canada (plan not sold in Saskatchewan) and the United States.

### MARQUIS OPTIONS

### AVAILABILITY

PERFORMANCE RELATED	Meteor	Marquis	Marquis Brougham	Grand Marquis	Meteor Wagon	Marquis Wagon	Colony Park Wagon
5.8 litre (351 CID) 2V Engine	X	X	X	X	X	X	X
Automatic Overdrive Transmission (1)	X	X	X	X	X	X	X
Traction-Lok Axle (3.08:1 ratio)	X	X	X	X	X	X	X
71 amp. Heavy-duty Battery	X	X	X	X	X	X	X
Heavy-duty Suspension	X	X	X	X	X	X	X
Trailer-towing Package	X	X	X	X	X	X	X
Extended Service Plan	X	X	X	X	X	X	X

### COMFORT & CONVENIENCE

Air Conditioning, Automatic or Manual Control	X	X	X	X	X	X	X
Clock, Analog	X	X	Std.	Std.	X	X	Std.
Clock, Electronic Date/Elapsed Time Digital	X	X	X	X	X	X	X
Convenience Group (2)	X	X	X	X	X	X	X
Cornering Lamps	X	X	X	X	X	X	X
Defroster, Electric Rear Window	Std.	Std.	Std.	Std.	Std.	Std.	Std.
Illuminated Entry System (3)	X	X	X	X	X	X	X
Manual Load Levelers	X	X	X	X	X	X	X
Mirror, LH Remote Control	X	X	Std.	Std.	X	X	Std.
Mirror, Illuminated Visor Vanity	X	X	X	X	X	X	X
Paint, Glamour	X	X	X	X	X	X	X
Paint, Tu-Tone	X	X	X	X	X	X	NA
Power Antenna	X	X	X	X	X	X	X
Power Seat, Bench or Flight Bench	X	X	X	NA	X	X	X
Power Seat, Reclining Flight Bench	X	X	X	NA	X	X	X
Power Seat, 6-way Driver Side (4)	NA	NA	X	X	NA	NA	X
Power Seat, 6-way both sides (4)	NA	NA	X	X	NA	NA	X
Seat, Reclining Twin Comfort	NA	NA	X	X	NA	NA	X
Power Side Windows	X	X	Std.	Std.	X	X	Std.
Radio, AM	Std.	Std.	Std.	Std.	Std.	Std.	Std.
Radio, AM/FM Stereo	X	X	X	X	X	X	X
Radio, AM/FM Stereo w/Tape	X	X	X	X	X	X	X
Radio, AM/FM Stereo w/Cassette	X	X	X	X	X	X	X
Radio, AM/FM Stereo Search w/Quad-8 Tape	X	X	X	X	X	X	X
Radio, AM/FM Electronic Search	X	X	X	X	X	X	X
Radio, AM/FM Electronic MPX/Cassette	X	X	X	X	X	X	X
Radio, Citizens Band (5)	X	X	X	X	X	X	X
Seats, Removable Rear Dual Facing	NA	NA	NA	NA	X	X	X
Speed Control (6)	X	X	X	X	X	X	X
Steering Wheel, Tilt	X	X	X	X	X	X	X
Tinted Glass	X	X	X	X	X	X	X
Visibility Light Group (7)	X	X	X	X	X	X	X

### APPEARANCE & PROTECTION

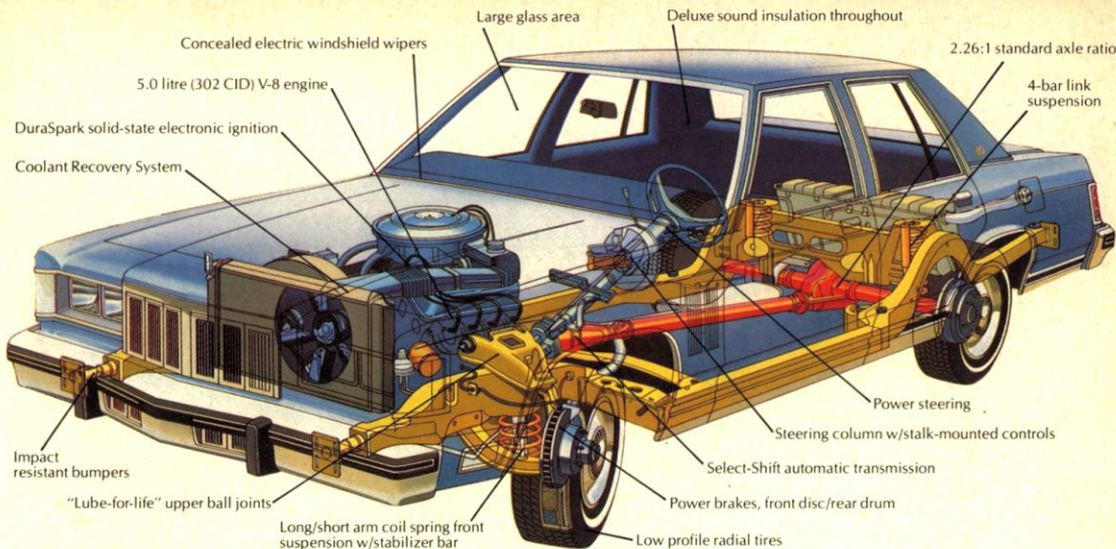
Appearance Protection Group (8)	X	X	X	X	X	X	X
Grand Marquis Decor Option (9)	NA	NA	NA	NA	NA	NA	X
Lock Convenience Group	X	X	X	X	X	X	X
Moulding, Protective Bodyside (Narrow)	X	X	X	X	X	X	X
Moulding, Rocker Panel	X	NA	NA	NA	X	NA	X
Paint Stripes, Bodyside	X	X	X	Std.	X	X	NA
Roof, Full vinyl (4-door models)	X	X	Std.	Std.	NA	NA	NA
Roof, Landau vinyl (2-door models)	X	X	Std.	Std.	NA	NA	NA
Seat Belt Warning Chimes	X	X	X	Std.	X	X	X
Trim, Bench or Flight Bench vinyl	X	X	X	NA	X	Std.	Std.
Wheel covers, Full	X	NA	NA	NA	X	NA	NA
Wheel Covers, Luxury	X	X	X	X	X	X	X
Wheel Covers, Wire	X	X	X	X	X	X	X
Wheels, 15" Cast Aluminum Turbine Spoke	X	X	X	X	X	X	X

X—Available Std.—Standard NA—Not Available  
The above is only a partial list of options. See your dealer for a complete list.

- (1) Not available with 5.8 litre (351 CID) Engine.  
 (2) Interval windshield wipers; visor vanity mirror (standard on Grand Marquis); electric decklid lock (tailgate lock on wagons); trip odometer and warning light cluster.  
 (3) Includes activation of a ring of light around key hole and interior lights by pulling the outside door handle.  
 (4) Only with Twin Comfort Lounge seats.  
 (5) Requires a regular radio option.  
 (6) Includes new "resume speed" feature and luxury steering wheel.

- (7) Includes engine compartment light; dome dual beam map light (std. on Grand Marquis); dual instrument panel courtesy lamps and trunk/cargo lamps (both std. on Grand Marquis, Marquis Brougham and Colony Park); and headlamp-on warning buzzer.  
 (8) Includes door edge guards, front and rear floor mats and license plate frames.  
 (9) Includes Twin Comfort Lounge seats (see page 12), luxury steering wheel, tinted glass, dome/dual beam map light, visor vanity mirror, seat back strips and map pockets, seat belt warning chimes.





## PENETRATING VIEW OF MERCURY MARQUIS ENGINEERING.

**Marquis Engines:** The 5.0 litre (302 CID) V-8 is standard for all Marquis models. An optional 5.8 litre (351 CID) V-8 is available.

**Marquis Transmissions:** Standard transmission is the Select-Shift automatic.

**Marquis Suspension:** Long and short arm coil spring front suspension with stabilizer bar has a low friction design upper ball joint requiring no lubrication.



Mercury Grand Marquis 2-door sedan



Mercury Grand Marquis 4-door sedan



Mercury Marquis Brougham 2-door sedan



Mercury Marquis Brougham 4-door sedan



Mercury Marquis 2-door sedan



Mercury Marquis 4-door sedan



Mercury Marquis Meteor 2-door sedan



Mercury Marquis Meteor 4-door sedan



Mercury Marquis Colony Park Wagon



Mercury Marquis Station Wagon



Mercury Marquis Meteor Station Wagon

### MARQUIS EXTERIOR COLOURS

Black	Dark Pine Metallic
White	Candy Apply Red
Silver Metallic	Dk. Corovan Met.
Med. Red Metallic	Pastel Sand
Lt. Medium Blue	Light Grey
Dark Blue Metallic	Med. Grey Met.

### Glamour Clearcoat Metallic

Pastel Pine Metallic
Med. Blue Metallic
Sand Metallic
Med. Bittersweet Met.

For accurate colour selection of exterior and interior colours see your Mercury dealer.

**Motorcraft** 



### Quality Replacement Parts from Ford.

Your new Mercury Marquis comes equipped with factory engineered and approved parts, including a dependable Motorcraft battery.

### TESTED TOUGH

Motorcraft spark plugs, Motorcraft shock absorbers, ignition parts and Long Life oil filter. For continued performance be sure to specify genuine Motorcraft parts whenever replacement is necessary.

Ford Motor Company of Canada, Limited reserves the right to discontinue or change specifications or designs at any time, without incurring any obligations. Some features shown or described previously are optional equipment items which are available at extra charge. Some options are required in combination with other options.

## MERCURY MARQUIS

