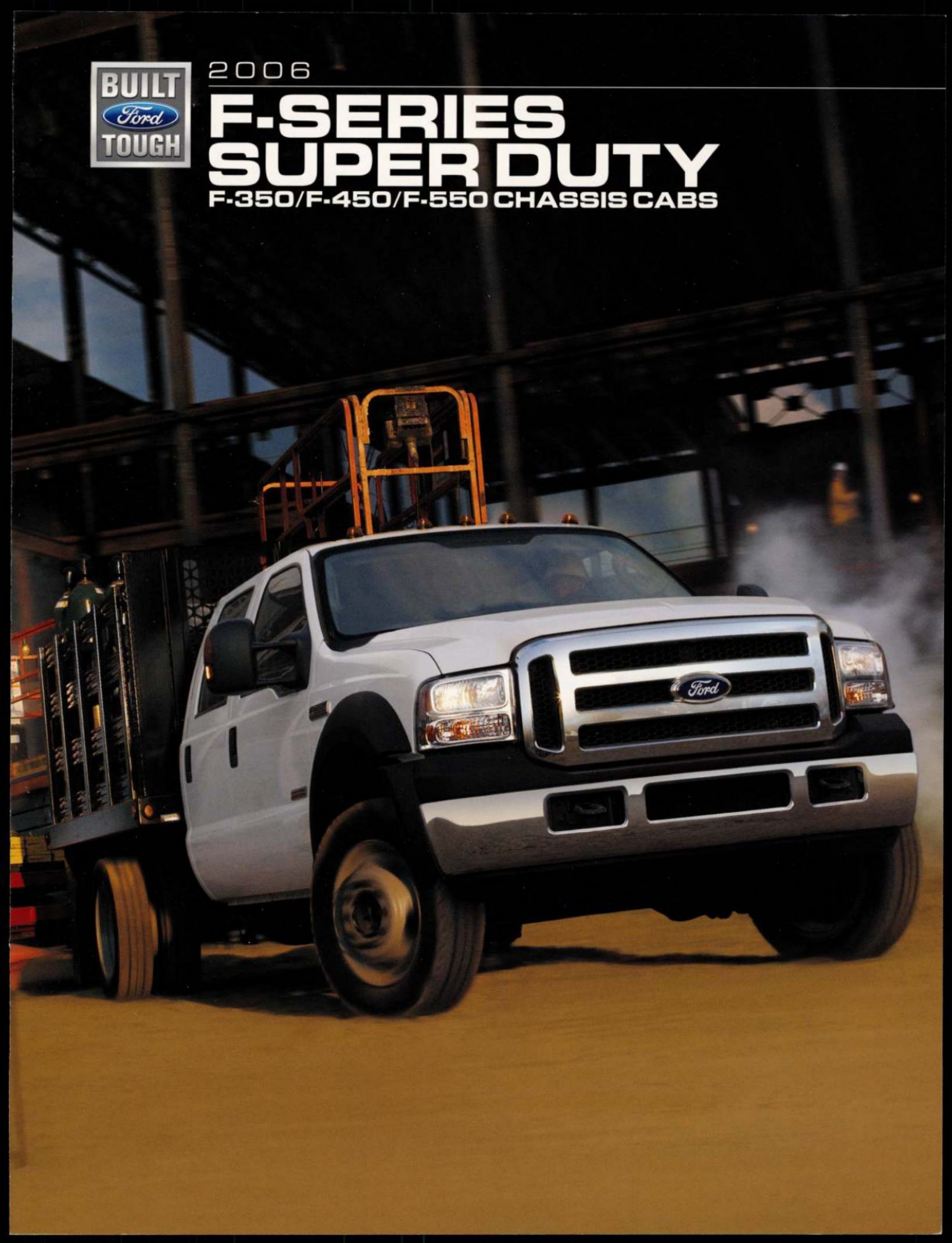




2006

F-SERIES SUPER DUTY

F-350/F-450/F-550 CHASSIS CABS





FACE THE FACTS

F-SERIES: #1 FOR 28 YEARS

The hardworking F-Series is the **BEST-SELLING LINE OF TRUCKS** and, again in 2006, the Super Duty Chassis Cabs arrive ready for the toughest tasks. Sophisticated steering and suspension systems provide excellent maneuverability and handling. Heavy-duty frame architecture can support **GCWRs UP TO 33,000 LBS.** The legendary **POWER STROKE® V8 TURBO DIESEL** pumps out 325 hp

and a crushing 570 lb.-ft. of torque. **TRITON® GAS ENGINES** use 3-valve technology to deliver muscle and efficiency. Choose the **TORQSHIFT™ 5-SPEED AUTOMATIC TRANSMISSION** with Tow/Haul Mode, plus the only available **INTEGRATED TRAILER BRAKE CONTROLLER** in the class, to make towing easier. There is also beauty in these beasts. Comfort, practicality, and even a dash

of refinement mark the cab of your Super Duty, especially if it happens to be the newly enhanced **LARIAT** model. Ford Chassis Cabs have built their considerable reputation by delivering the **RUGGED CONSTRUCTION, HUGE CAPACITIES AND UPFRONT COMFORT** that make them everyday heroes. That's why they're part of the best-selling truck line on earth. No brag, just facts.



CONTENTS

CONFIDENT HANDLING & BRAKING	3
MULTI-PURPOSE POWER	5
READY FOR UPFIT	7
THE INSIDE STORY	9
HARD-WORKING HIGHLIGHTS	11
SPECIFICATIONS	13

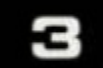
Vehicles throughout this catalog are shown with optional and aftermarket upfit equipment.

PRECISION MANEUVERS

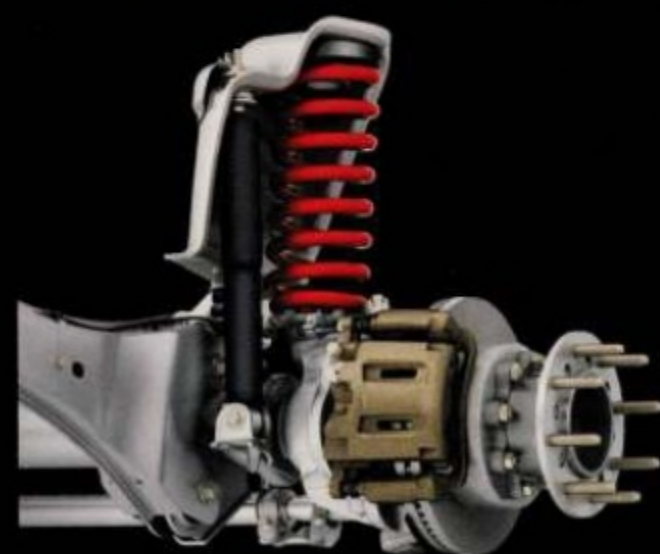
Super Duty Chassis Cabs are renowned for their ability to haul huge payloads, plus GAWR, GVWR and GCWR capabilities that are nothing less than staggering. But what good is all that brawn if you can't get into a tight job site? No worries here: On F-450 and F-550, a front suspension and steering system with large wheel cuts and a wide front axle deliver a compact turning circle. How tight? These trucks can make a full U-turn in as little as 42.3' curb-to-curb. When trucks this big and capable can maneuver and turn in tight places, your jobs will certainly take a turn for the better.



CONFIDENT HANDLING & BRAKING



CARRY THAT WEIGHT



TWIN-COIL MONOBEAM FRONT SUSPENSION – This compact design eliminates interleaf friction and helps reduce axle windup. It's standard on F-350 4x4 and all F-450/F-550 Super Duty models. On F-450/F-550, it can accommodate a beefy GAWR of up to 7000 lbs.

4-WHEEL DISC ANTI-LOCK BRAKE SYSTEM (ABS) – Every Super Duty Chassis Cab offers the sure and controlled stopping power of ABS. Vented front rotors cool quickly, and massive discs at all 4 wheels provide a large brake swept area. All features that make F-Series some of the most capable, competent trucks on the road.

MAXIMUM LOADS – Properly equipped, F-550's ultimate load capacity reaches 12,300 lbs., and trailer weight up to 24,900 lbs. Its GVWR is up to 19,000 lbs. and GCWR is up to 33,000 lbs. When big jobs call, F-550 Super Duty answers.

EXCLUSIVE TOWING TECHNOLOGY

TOWCOMMAND INTEGRATED TRAILER BRAKE CONTROLLER (TBC) – Developed, tested and factory-installed by Ford, this optional controller is integrated with the Anti-lock Brake System. It synchronizes the vehicle and electric trailer brakes for seamless braking while towing even the heaviest loads. It has a built-in trailer disconnect alarm. And it comes warranted by Ford. The controller is integrated into the instrument panel, so the design looks great and eliminates messy mounting and wiring of aftermarket installations. In short, it is the best-functioning controller available. And you can only get it on F-Series Super Duty. (See your dealer for limited warranty details.)



MULTI-PURPOSE POWER

Ford Super Duty Chassis Cabs can be powered to meet a wide range of demands. The Power Stroke® V8 Turbo Diesel is all muscle and durability, with its massive low-end torque and B10 life design of 250,000 miles. Choose the colossal 6.8L Triton® V10 for best-in-class* gas horsepower and torque, or the 5.4L Triton V8 on select models for power and economy. 3-valve technology in every gas engine ensures that you put your strength to its most efficient use. Add the 6-speed manual or TorqShift™ 5-speed automatic transmission to an available engine, and you're ready to roll.

*Traditional Chassis Cab trucks under 22,000 lbs. GVWR.

6.0L POWER STROKE V8 TURBO DIESEL

ENGINE TYPE	Turbo Diesel
CONFIGURATION	OHV 32-Valve V8
DISPLACEMENT	6.0 Liters
SAE NET HORSEPOWER	325 @ 3300 rpm
SAE NET TORQUE	570 lb.-ft. @ 2000 rpm

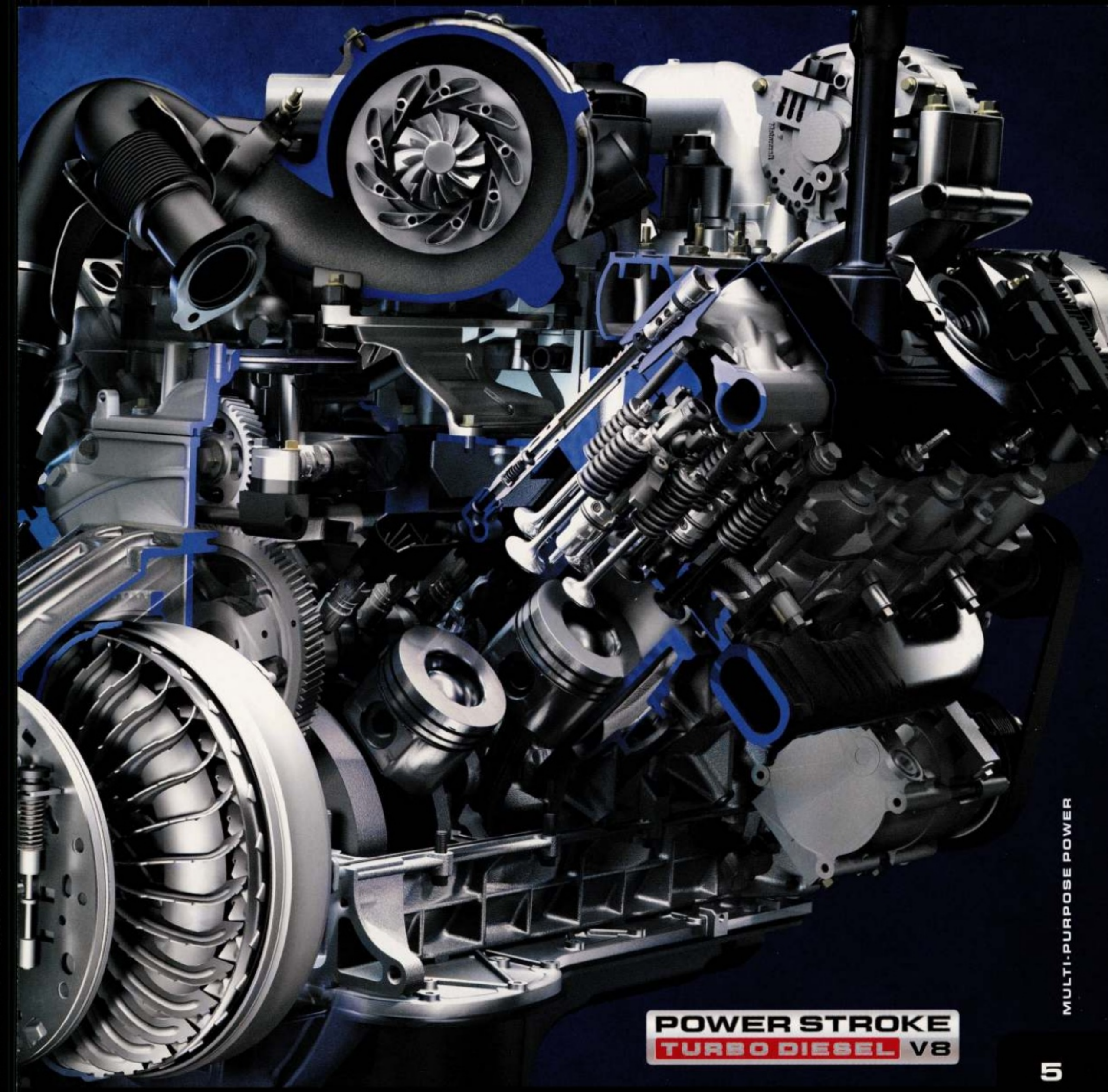


PRODUCTIVE POWER



TORQSHIFT 5-SPEED AUTOMATIC TRANSMISSION – Originally created to harness the crushing torque of the 6.0L Power Stroke diesel, this heavy-duty transmission is standard on F-550, and available on all other Chassis Cabs with gasoline or diesel engines. Its rugged torque converter maximizes low-speed torque output. A large fluid pump provides excellent lubrication and cooling, while gearing and precision clutch material contribute to durability.

TorqShift uses direct electronic shift control in unison with the powertrain control module to precisely manage power delivery in any driving circumstance. When the Tow/Haul Mode is selected, engine speed, vehicle speed and other parameters are monitored to engage the right gear for towing and hauling conditions. Top it off with an optional Power TakeOff (PTO) provision, and you have a world-class transmission that's a superb match for all Super Duty engines.



**POWER STROKE
TURBO DIESEL V8**

6.8L 3-VALVE TRITON V10

ENGINE TYPE	Gas
CONFIGURATION	SOHC 30-Valve V10
DISPLACEMENT	6.8 Liters
SAE NET HORSEPOWER	362 @ 4750 rpm
SAE NET TORQUE	457 lb.-ft. @ 3250 rpm

6.8L 3-VALVE TRITON V10 – No other gas engine in the class puts out more horsepower and torque. It has an Electronic Throttle Control for smooth, refined power delivery, while 3-valve induction provides low-end torque and fuel efficiency. If you're looking for serious power and torque in a gas powerplant, you've found it.

TRITON POWER



Cab Selection



Regular Cab

→ The choice for most delivery and service applications where a 3-across front seat is required. An all-vinyl full bench comes standard on XL. A high-series cloth 40/20/40 split bench is included with XLT models. Lariat includes a split bench with leather-trimmed seats. (F-450 XL shown.)



SuperCab

→ Gives you plenty of extra cargo space, or lets you haul as many as 3 rear-seat passengers. Front seats are the same type and trim levels as the Regular Cab. In back, a fold-up bench comes standard in vinyl on XL, cloth on XLT and premium vinyl on Lariat. Rear-seat delete is available. (F-350 XLT shown.)



Crew Cab

→ Maximum crew accommodations and flexibility. 3-up seating front and rear; full-size doors for both rows. The XL sports a cloth/vinyl weave front bench seat, a cloth 40/20/40 split bench seat is standard on XLT. Lariat upgrades to leather trim. Rear seats are a standard cloth/vinyl weave fold-forward bench on XL, a cloth FlexFold™ 60/40 split rear bench on XLT, and the same seat in leather trim on Lariat. (F-550 XLT shown.)

Fuel Tank Options

→ 40-gallon aft-of-axle is standard, 19-gallon midship is optional. Choose both on diesel DRW models for 59 gallons of fuel capacity.

All-Around Rig

→ Flat frame rails spaced at 34" accept a wide range of aftermarket bodies. Easy upfits put your new truck to work right away.

Over-Cab Choice

→ A low-cab design makes F-Series Super Duty a great choice for over-cab upfits.

Solid Foundation

→ No matter the upfit, Super Duty Chassis Cabs provide a tough, versatile platform. Aftermarket installations go smoothly, which can add to your bottom line.

Long-Haul Exhaust

→ Stainless steel construction resists corrosion.

ALL BUSINESS ALL THE TIME

Few heavy-duty truck platforms are as well suited to so many jobs as F-Series Super Duty Chassis Cab. Thick C-channel frames, heavy-duty axles and sturdy suspensions team up in rock-solid foundations to support a wide variety of upfits. Super-size GVWRs and GAWRs give you the confidence to tackle the big

jobs, while 4-wheel disc anti-lock brakes inspire confidence at the wheel. Standard trailer tow mirrors give you a clear rear view even with a big trailer in tow. Factory-installed upfitter switches are standard. Add the available Integrated Trailer Brake Controller for optimum electric trailer brake performance. Pick a cab that suits you, and you're in business.

PICKUP BOX DELETE

Available from the F-250/F-350 Super Duty pickup line, **PICKUP BOX DELETE OFFERS A 38"-WIDE SPACE BETWEEN RAILS** for certain applications. **SAVE THE COST OF A NEW BODY** by transferring a body you already own from your old truck. Just another option to get the right **BUILT FORD TOUGH** truck for your job. Note: Pickup box-delete frame rails have kick-up flanges and are not flat.



THE COMFORTABLE CHOICE

Whether you want to please your fleet's drivers or yourself, there's no going wrong with an F-Series Super Duty Chassis Cab. Our interiors are some of the most durable, functional and comfortable driving environments on the road. The FlexFold™ rear bench seat on Crew Cab provides several configurations. Standard upfitter switches and available class-exclusive Trailer Brake Controller are fully integrated into the instrument panel. And Super Duty Chassis Cabs have a long list of available features, including: auxiliary steering wheel-mounted audio and climate controls, power windows and door locks, 6-way power/heated driver and front-passenger seats, front seat lumbar support and tilt steering wheel with speed control.



XL REGULAR CAB 4x4 VINYL INTERIOR IN TAN WITH AVAILABLE EQUIPMENT



XLT SUPERCAB 4x4 CLOTH INTERIOR IN MEDIUM FLINT WITH AVAILABLE EQUIPMENT

SUPER DUTY: LARIAT STYLE



ENHANCED 2006 LARIAT – Rich woodgrain-style accents are a Lariat hallmark. And for 2006, there are more standard features, including: duplicate steering wheel-mounted audio and climate controls, enhanced message center, Electronic Automatic Temperature Control and auto-dimming rearview mirror. For value and comfort in a Built Ford Tough chassis cab, Lariat leads the way. (Some features shown are optional.)

SEATING, CARGO OR BOTH

FLEXFOLD SEATING – The Crew Cab 60/40 split rear seat increases the functionality of an already versatile interior. Depending on your needs, you can fold either one or both seatbacks down. Lift the seat bottoms up and you have access to a flat, steel loadfloor.



Beast of Burden

Choose your payload and towing ratings, and Ford supplies the right heavy-duty axles, springs, shocks, and standard front and rear stabilizer bars for the job. How easy is that?

Easy In, Easy Out

Crew Cab rear doors have hinges designed to open extra-wide for no-hassle loading and unloading.

ANYWAY YOU LOOK AT IT...

F-450/F-550 Super Duty Chassis Cabs put up huge numbers. But it's more than the available 24,900 lbs.* of 5th-wheel towing capacity, or a maximum conventional towing capacity of 16,000 lbs.* that makes Super Duty a super partner. It's hard-working features like an available 260-amp dual-alternator system, and the standard Stationary Elevated Idle Control that

comes with all powertrains. It's the convenience of Crew Cab doors that open wide for busy crews; an engine-hour meter that helps you keep maintenance on schedule; and steering, suspension and a wide front axle designed to get you around in tight spaces. If you're looking for a truck that works hard and makes your life easier doing it, take a look at Ford Super Duty.

*Requires aftermarket hitch.

POWER & UTILITY CHOICES



110-, 115-, 140- OR 260-AMP ALTERNATOR POWER – Power-hungry accessories can wear down batteries in nothing flat, so we offer a choice of charging systems to keep them going strong. Gas engines carry a standard 115-amp alternator. The Power Stroke® Turbo Diesel has a 110-amp alternator and is available with a 140-amp unit or, for the ultimate in power output, an optional dual-alternator system that pumps out an astounding 260 amps.

STATIONARY ELEVATED IDLE CONTROL (SEIC) – Pumps up engine idle to drive auxiliary commercial equipment such as hydraulic pumps, generators, air compressors; and maintains 6.0L diesel battery charge under extreme demands. Standard with all powertrains, SEIC makes your Chassis Cab even more versatile. (Your final-stage manufacturer or upfitter must supply control switches.)

Get the Power

Power TakeOff (PTO) provision is standard on the 6-speed manual, and optional on the TorqShift™ automatic. Available only on 6.8L Triton® V10 and 6.0L Power Stroke Diesel.

Wide = Maneuverable

Sounds strange, doesn't it? Yet a wide front axle on F-450 and F-550 contributes to big wheel cuts and sharp steering angles, so you can turn tight when it counts.

IN COMMAND & IN THE KNOW

UPFITTER SWITCHES – These standard switches facilitate add-on system installations. They provide easy power access and upfit operation integrated with the instrument panel, plus, their handsome design fits your truck. The 4 switches can operate high-power relays for heavy-duty accessories. This super-clean installation is pre-wired and ready to go.

ENGINE-HOUR METER – Work trucks, particularly those with diesel engines, spend many hours at idle during winter, and at elevated idle while operating power accessories year round. In these situations, an engine-hour meter is more accurate for tracking service intervals than the odometer. Hour meters are standard on all Super Duty Chassis Cabs.



SPECIFICATIONS

STANDARD FEATURES

SAFETY/SECURITY

- Airbags¹ – Driver and right-front passenger
- Alert chimes – Headlamps-on, key-in-ignition and door ajar
- Belt-Minder[®] safety belt reminder
- BlockerBeam[®] – Front bumper underride protection system
- Brake/shift interlock (with automatic transmission)
- Child-safety seat top tether anchors (front-passenger seat on Regular Cab; all rear seats on SuperCab and Crew Cab)
- Fuel pump inertia shutoff switch
- Height-adjustable safety belts – Front outboard (Regular Cab, XL SuperCab, Crew Cab)
- Passenger airbag deactivation switch (Regular Cab, SuperCab)
- Safety belt energy-management retractors – Front outboard positions
- Side-impact door beams

MECHANICAL

- 5.4L SOHC 3-valve Triton[®] V8 engine (F-350 SRW)
- 6.8L SOHC 3-valve Triton V10 engine (F-350 DRW/F-450/F-550)
- 6-speed manual overdrive transmission with Power TakeOff (PTO) provision (F-350/F-450)
- TorqShift[™] 5-speed automatic overdrive transmission (F-550)
- 100,000-mile tune-up interval² (gas engines)
- Battery saver
- Fail-safe engine cooling system (gas engines)
- Fuel tank – 40-gallon capacity (includes auxiliary fuel tap)
- Manual 4-wheel-drive system with manual locking hubs (4x4 models only)
- Power 4-wheel disc brakes with ABS
- Power steering
- Stabilizer bars – Front and rear
- Stainless steel exhaust system
- Steering damper
- Trailer tow prep – 7-wire harness (blunt cut) with relays

INTERIOR

- Assist and ride handles
- Coat hooks – 2
- Cupholders – 2 on instrument panel (2 in rear with XLT/Lariat SuperCab and XLT/Lariat Crew Cab)
- Dome light (front and rear with Crew Cab)
- Flip-open rear quarter windows (SuperCab)
- Instrumentation – Engine-hour meter, speedometer, tachometer, trip odometer, voltmeter (man. trans.), oil pressure, coolant temperature, transmission temperature gauge (auto. trans.), air filter minder (diesel only), fuel gauge, indicator lights and turbo boost (diesel only)
- Power points – 2 on instrument panel (including lighter)
- Steering wheel – Black vinyl
- Upfitter switches – 4

EXTERIOR

- Bumper – Front, painted
- Front fender moldings with integrated mud flaps (F-450/F-550)
- Roof clearance lights
- Solar-tinted glass
- Tow hooks – Front (2)
- Windshield wipers – Interval

¹Always wear your safety belt and always deactivate the passenger airbag when using a rear-facing child-safety seat with Regular Cab and SuperCab models. Always wear your safety belt and always secure children in the rear seat with Crew Cab models. Passenger airbag may be deleted. ²Under normal driving conditions with routine fluid and filter changes.

FEATURES & OPTIONS

XL

XLT

LARIAT

SAFETY/SECURITY

- Advanced Security Group – Includes autolock, autolamp, illuminated entry system, driver's-door keypad and remote keyless-entry system with 2 key fobs

MECHANICAL

- 5.4L SOHC 3-valve Triton V8 engine (F-350 only)
- 6.8L SOHC 3-valve Triton V10 engine
- 6.0L OHV 32-valve Power Stroke[™] V8 Turbo Diesel engine
- 6-speed manual overdrive transmission with Power TakeOff (PTO) provision (F-350/F-450; 6.8L and 6.0L engines only)
- 6-speed manual overdrive transmission with Power TakeOff (PTO) provision (optional on F-550)
- Power TakeOff (PTO) provision – Automatic transmission with 6.8L or 6.0L engine
- TorqShift 5-speed automatic overdrive transmission with Tow/Haul Mode
- Electronic Shift-On-the-Fly 4-wheel-drive system with auto/manual locking hubs (F-350 4x4 models only)
- 18" steel wheels (F-350 SRW)
- 18" chromed-steel wheels (F-350 SRW)
- 18" forged polished-aluminum wheels (F-350 SRW)
- 18" premium polished-aluminum wheels (F-350 SRW)
- 17" steel wheels – 6 (F-350 DRW)
- 17" forged polished-aluminum wheels – 4 (F-350 DRW)
- 19.5" steel wheels – 6 (F-450/F-550)
- 19.5" forged polished-aluminum wheels – 4 (F-450/F-550)
- LT275/65R18 all-season BSW tires (F-350 SRW 4x2)
- LT275/70R18 all-season BSW tires (F-350 SRW 4x4)
- LT275/70R18 all-terrain BSW tires (F-350 SRW 4x4)
- LT275/70R18 all-terrain OWL tires (F-350 SRW 4x4)
- LT245/75R17 all-season BSW tires – 6 (F-350 DRW)
- LT245/75R17 all-terrain BSW tires – 6 (F-350 DRW)
- LT245/75R17 all-terrain OWL tires – 4 (F-350 DRW)³
- 225/70R19.5F all-season BSW tires (F-450/F-550)
- 225/70R19.5F traction BSW tires – 4 rear only (F-450/F-550)
- 225/70R19.5F max. traction BSW tires – 6 (F-450/F-550 4x4 only)⁴
- Engine block heater⁵
- Extra-heavy-duty alternator – 140-amp (diesel engine only)
- Dual alternators – 260-amp (diesel engine only)
- Fuel tank – 19-gallon capacity midship in place of standard (DRW models only); some exclusions
- Fuel tanks – 59-gallon capacity dual tank combination: 40-gallon aft-of-axle standard plus 19-gallon midship (DRW models with diesel engine only)
- Higher-ratio rear axle
- Limited-slip rear axle
- Skid plate – Transfer case (SuperCab and Crew Cab 4x4 models only)
- Spare tire and wheel – Includes jack
- TowCommand Integrated Trailer Brake Controller (not available with Trailer Tow Package; deletes Trailer Tow Package on Lariat; electric brakes only)
- Vehicle jack

SEATING

- Front bench seat – HD vinyl (not available with Crew Cab)
- Front bench seat – HD cloth/vinyl weave (standard with Crew Cab)
- Front bench seat – HD cloth
- Front bench seat – 40/20/40 split with armrest, cupholders and storage bin (XL – HD vinyl or HD cloth; XLT – cloth; Lariat – leather-trimmed) (XL – Fleet only)
- Front bucket seats – HD vinyl
- Front bucket seats – HD cloth/vinyl weave
- Front bucket seats – HD cloth

● Standard ● Select Availability ○ Optional — Not Available

³Inner tire is BSW. ⁴Not recommended for over-the-road application. ⁵Standard in select cold-weather states.

FEATURES & OPTIONS (continued)

XL

XLT

LARIAT

SEATING (continued)

- Front captain's chairs with console (XLT – cloth, Lariat – leather trim)
- Heated seats – Driver and front-passenger
- Lumbar support – Driver and front-passenger
- Power 6-way driver and passenger seats (passenger seat with Crew Cab only)
- Rear fold-up bench seat (SuperCab)
- Rear bench with folding seatback (Crew Cab)
- Rear FlexFold[™] 60/40 split bench seat, fold-flat feature with solid-steel loadfloor, grocery hooks, dual integrated cupholders and tray, and outboard head restraints (Crew Cab)
- Rear-seat delete (SuperCab)

INTERIOR

- Accessory delay for power features⁶
- Air conditioning
- AM/FM stereo with digital clock
- AM/FM stereo with single-CD player and digital clock
- AM/FM stereo with single-CD/cassette player and digital clock
- AM/FM stereo with 6-disc in-dash CD changer and digital clock
- Duplicate steering wheel-mounted audio/climate controls
- Electronic Automatic Temperature Control (EATC)
- Floor covering – Black vinyl
- Floor covering – Carpet
- Floor mats – Color-coordinated
- Floor mats – Black all-weather
- Instrument cluster – Black with black gauges
- Instrument cluster – Bronze-faced with cream gauges
- Instrumentation pack with enhanced message center
- Overhead console with sunglasses storage and garage door opener storage (SuperCab and Crew Cab)
- Power-adjustable brake and accelerator pedals (with automatic transmission only)
- Power door locks⁶
- Power front windows with one-touch-down driver's-side feature⁶ (includes power rear windows on Crew Cab)
- Radio delete
- Rearview mirror – Day/night
- Rearview mirror – Auto-dimming
- Speed control/tilt steering wheel
- Steering wheel – Black leather-wrapped
- Storage tray – Behind seat
- Visors with passenger mirror
- Visors with illuminated driver and passenger mirrors
- Woodgrain-style instrument-panel insert

EXTERIOR

- Bumper – Front, argent-painted
- Bumper – Front, chrome⁷
- Cab steps – Black molded
- Daytime running lamps (Fleet only)
- Grille – Black
- Grille – Bright
- Headlamps – Sealed-beam halogen
- Headlamps – Dual-beam jewel-effect⁷
- Light – Underhood service⁷
- Mirrors – Manual glass, manual telescoping trailer tow with 2-way fold
- Mirrors⁸ – Power glass, manual telescoping trailer tow with 2-way fold (also heated glass, integrated turn signals and clearance lights)
- Privacy glass (rear doors and rear window)⁸
- Sliding rear window – Manual

⁶Fleet-only option on XL. ⁷Available as part of the XL Décor Group. ⁸Requires sliding rear window.

EQUIPMENT PACKAGES

XL

XLT

LARIAT

- 15,000-lbs. GVWR Package (F-450 only)
- Ambulance Prep Package⁹ (requires diesel engine) – Includes air conditioning, dual alternators (combined 260 amps), standard-width axle included with F-350 SRW, wide-track 4.10 limited-slip axle included with F-350 DRW and maximum front spring/GAWR on all models
- Convenience Package – Includes speed control/tilt steering wheel, air conditioning and AM/FM stereo with single-CD player and digital clock
- Heavy-Service Suspension Package¹⁰ – Includes 1-up heavy-service front springs (150-lb. upgrade – 4x2; 400-lb. upgrade – 4x4; not available if maximum spring is selected as standard)
- Extra-Heavy-Service Suspension Package¹⁰ – Includes 2-up extra-heavy-service front springs (300-lb. upgrade – 4x2; 800-lb. upgrade – 4x4; not available if maximum spring is selected as standard)
- High-Capacity Trailer Tow Package (F-450/F-550 with diesel engine) – Includes 28,000 lbs. GCWR with F-450/F-550 6-speed manual transmission; 30,000 lbs. GCWR with F-450 with TorqShift; and 33,000 lbs. GCWR with F-550 with TorqShift and upgraded 4.88 rear axle gear set
- Low Deflection Package (recommended for rear-biased loading) – Includes 2" spacer blocks (F-450/F-550 only, excludes 140.8" wheelbase)
- Payload Upgrade Package – Increases GVWR for increased payload range (F-350 SRW and F-550 only)
- Snow Plow Prep Package¹⁰ – Includes specific spring/GAWR upgrade ranging from 5200-7000 lbs. (depending on model), 140-amp alternator and unique fan clutch with 6.0L diesel (4x4 only on F-350)
- Trailer Tow Package – Includes trailer brake wiring kit ready for aftermarket upfit (no controller)
- XL Décor Group – Includes chrome front bumper, dual-beam jewel-effect headlamps and underhood service light; also includes bright hub covers and center ornaments on F-350 SRW

⁹Restrictions and special instructions apply. See your Ford Dealer for information.
¹⁰Option and other restrictions apply. See your Ford Dealer for information.

INTERIOR DIMENSIONS

	REGULAR CAB	SUPERCAB	CREW CAB
FRONT			
Head room	41.1"	41.4"	41.3"
Shoulder room	68.0"	68.0"	68.0"
Hip room	67.4"	67.4"	67.4"
Leg room	41.0"	41.0"	41.0"
Volume (cu. ft.)	66.3	66.8	66.6
REAR			
Head room	—	38.2"	40.8"
Shoulder room	—	68.0"	68.0"
Hip room	—	67.3"	67.3"
Leg room	—	32.2"	41.7"
Volume (cu. ft.)	—	48.4	67.0
Total volume (cu. ft.)	66.3	115.2	133.6

Comparisons based on 2005 competitive models, publicly available information and Ford certification data at time of printing. Some features discussed may be optional. Vehicles throughout this catalog are shown with optional and aftermarket upfit equipment. Features shown may be offered only in combination with other options or subject to additional ordering requirements or limitations. Following publication of the catalog, certain changes in standard equipment, options and the like, or product delays may have occurred which would not be included in these pages. Your Ford Dealer is the best source for up-to-date information. Ford Division reserves the right to change product specifications at any time without incurring obligations. Body manufacturers are responsible for compliance certification of the completed vehicle. The Ford New-Vehicle Limited Warranty and any government certification made by Ford shall cover only the vehicle as manufactured by Ford and shall not extend to any addition, modification or change of or to the vehicle by the Ford Authorized Pool Account.

SPECIFICATIONS

POWERTRAIN SPECIFICATIONS

	5.4L 3-VALVE TRITON® V8	6.8L 3-VALVE TRITON V10	6.0L POWER STROKE® V8 TURBO DIESEL
Configuration	SOHC	SOHC	OHV (32-valve)
Fuel injection	Sequential Electronic	Sequential Electronic	Electro-hydraulic w/ Generation 2 fuel injection
Engine control system	Electronic	Electronic	Electronic
Induction system	Specially tuned	Specially tuned	Electronic Variable Response Turbocharger (EVRTM), intercooler
Battery	12-volt; 750-cca/78-amp	12-volt; 750-cca/78-amp	Dual 12-volt; 750-cca/78-amp
Alternator	115-amp	115-amp	110-amp; optional 140-amp single or 260-amp dual
Cooling system	Pressurized series flow	Pressurized series flow	Pressurized series flow
Cylinders	8	10	8
Cylinder head material	Aluminum	Aluminum	Cast iron
Block material	Cast iron	Cast iron	Cast iron
Valve operation	Hydraulic roller	Hydraulic roller	Push rod/rocker arms
Camshaft drive	Variable cam timing	Silent chain	Gear
Bore	3.55"	3.55"	3.74"
Stroke	4.16"	4.16"	4.13"
Compression ratio	9.8:1	9.2:1	18.0:1
Horsepower (hp @ rpm)	300 @ 5000	362 @ 4750	325 @ 3300
Torque (lb.-ft. @ rpm)	365 @ 3750	457 @ 3250	570 @ 2000
Recommended fuel	Unleaded	Unleaded	Diesel

BUSINESS PREFERRED NETWORK

Each of the select dealerships in our Business Preferred Network (BPN) is committed to providing quality commercial-oriented products and service, as well as special financing and billing arrangements, to businesses that rely on Ford products. As a BPN customer, your business vehicles receive priority service at your BPN dealership, to help get your vehicle back on the road quickly.



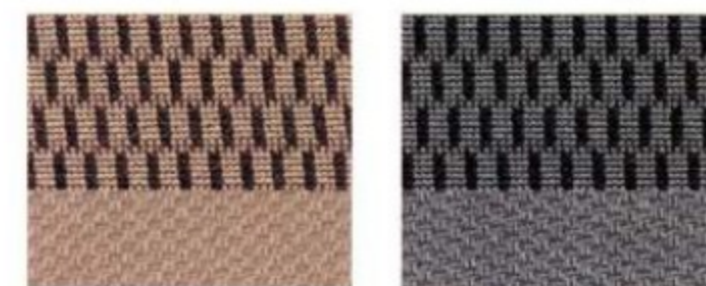
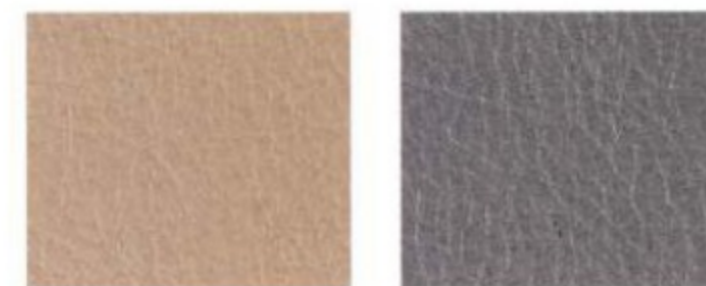
FINANCIAL SERVICES

Our commercial purchase plans offer attractive rates, negotiable terms and business-friendly options, while CommercialLease and CommercialLeasePlus® offer a variety of package options to meet your leasing needs. Contact us at 1-877-234-FMCC (3622) or visit our Web site at fordcredit.com.

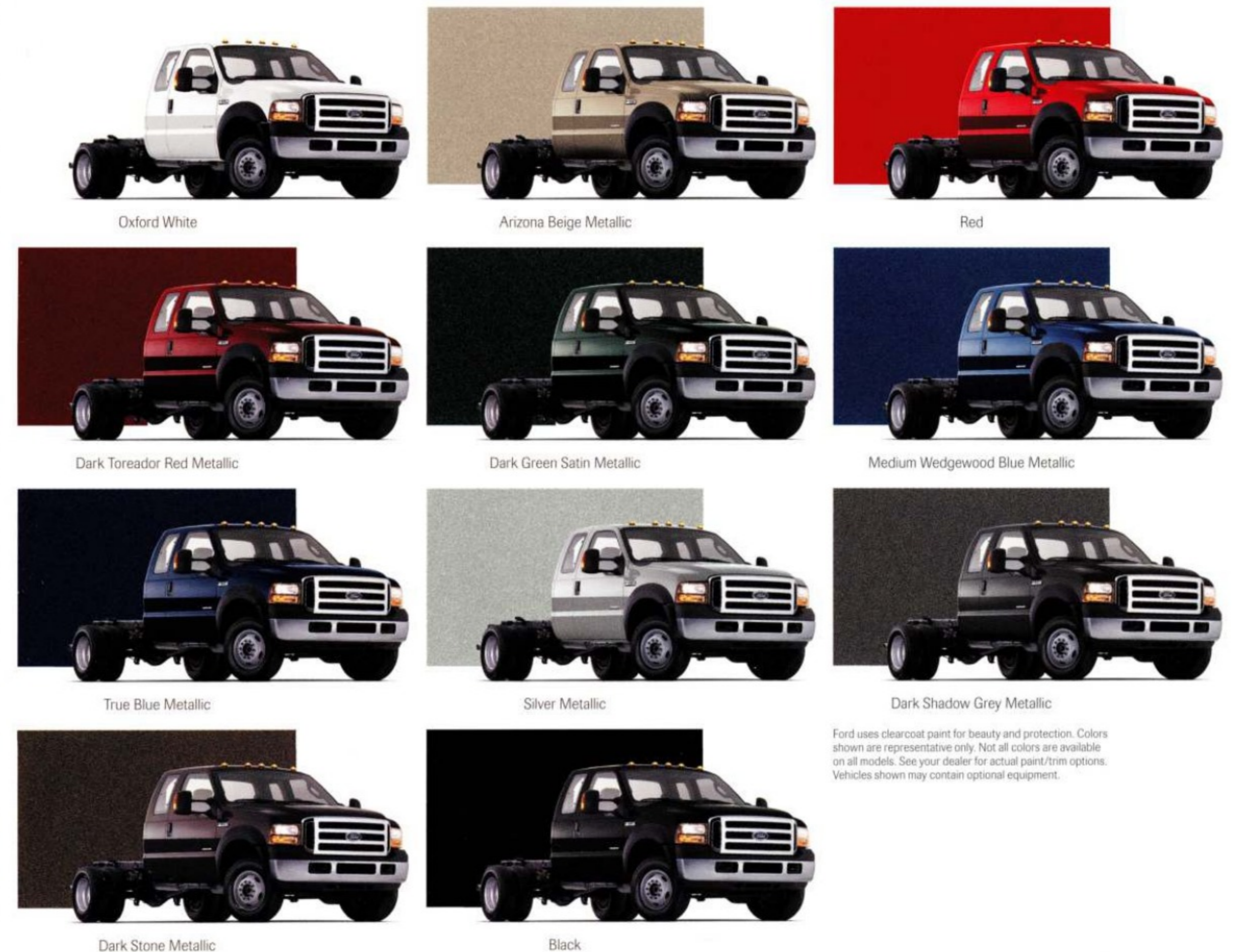


INTERIOR COLORS

- TAN
- MEDIUM FLINT
- XL/XLT/LARIAT
- Oxford White
- Arizona Beige Metallic
- Red
- Dark Toreador Red Metallic
- Dark Green Satin Metallic
- Medium Wedgewood Blue Metallic
- True Blue Metallic
- Silver Metallic
- Dark Shadow Grey Metallic
- Dark Stone Metallic
- Black



EXTERIOR COLORS



Ford uses clearcoat paint for beauty and protection. Colors shown are representative only. Not all colors are available on all models. See your dealer for actual paint/trim options. Vehicles shown may contain optional equipment.

New Truck Limited Warranty
Under this warranty, you'll receive bumper-to-bumper coverage for 3 years/36,000 miles with no deductible. The Power Stroke® diesel engine coverage is 5 years/100,000 miles. You'll also receive corrosion perforation coverage for 5 years with unlimited mileage and no deductible. Ask your Ford Dealer for a copy of the warranty.

For a purchase or lease, the Ford **Extended Service Plan (ESP)** gives you "Peace-of-Mind" protection designed to cover key vehicle components and protect you from the cost of unexpected repairs. Ask your dealer for an ESP backed by Ford Motor Company and honored at all Ford dealerships.

2006 FORD F-350/F-450/F-550 SUPER DUTY

BEST-SELLING LINE OF TRUCKS

- F-SERIES – #1 FOR 28 STRAIGHT YEARS

3 POWERFUL ENGINES

- 6.0L POWER STROKE® V8 TURBO DIESEL
- 6.8L 3-VALVE TRITON® V10 GAS WITH BEST-IN-CLASS HORSEPOWER AND TORQUE
- 5.4L 3-VALVE TRITON V8 GAS

2 TOUGH TRANSMISSIONS

- 6-SPEED MANUAL
- TORQSHIFT™ 5-SPEED AUTOMATIC WITH TOW/HAUL MODE

GCWR UP TO 33,000 LBS.

EXCLUSIVE FEATURES

- TOWCOMMAND INTEGRATED ELECTRIC TRAILER BRAKE CONTROLLER
- AUXILIARY UPFITTER SWITCHES

For more information on Ford Commercial Vehicles,
go to www.commtruck.ford.com

