



2007 F-150





LEADERSHIP

Since the first F-Series hit the road, Ford trucks have led the way in toughness and innovation. The 2007 F-150 is no exception, with best-in-class towing and payload, the strongest frame – plus handling, comfort, and exclusive features that set it apart. It's even earned the government's highest frontal crash test rating for both driver and right-front passenger: 5 Stars. Climb aboard and discover the hardworking, smooth-riding F-150 – a Built Ford Tough truck that's helped F-Series achieve yet another leadership landmark: America's best-selling trucks for 29 years running.



BEST-IN-CLASS*

- F-Series: Best-Selling Trucks 29 Years Running
- Best Towing: 10,500 lbs. • Best Payload: 3050 lbs.
- Best Selection of Models, Trim and Cargo Box Configurations
- Best Passenger Room: Regular Cab and SuperCab
- Best Cargo Box Volume • Strongest Frame

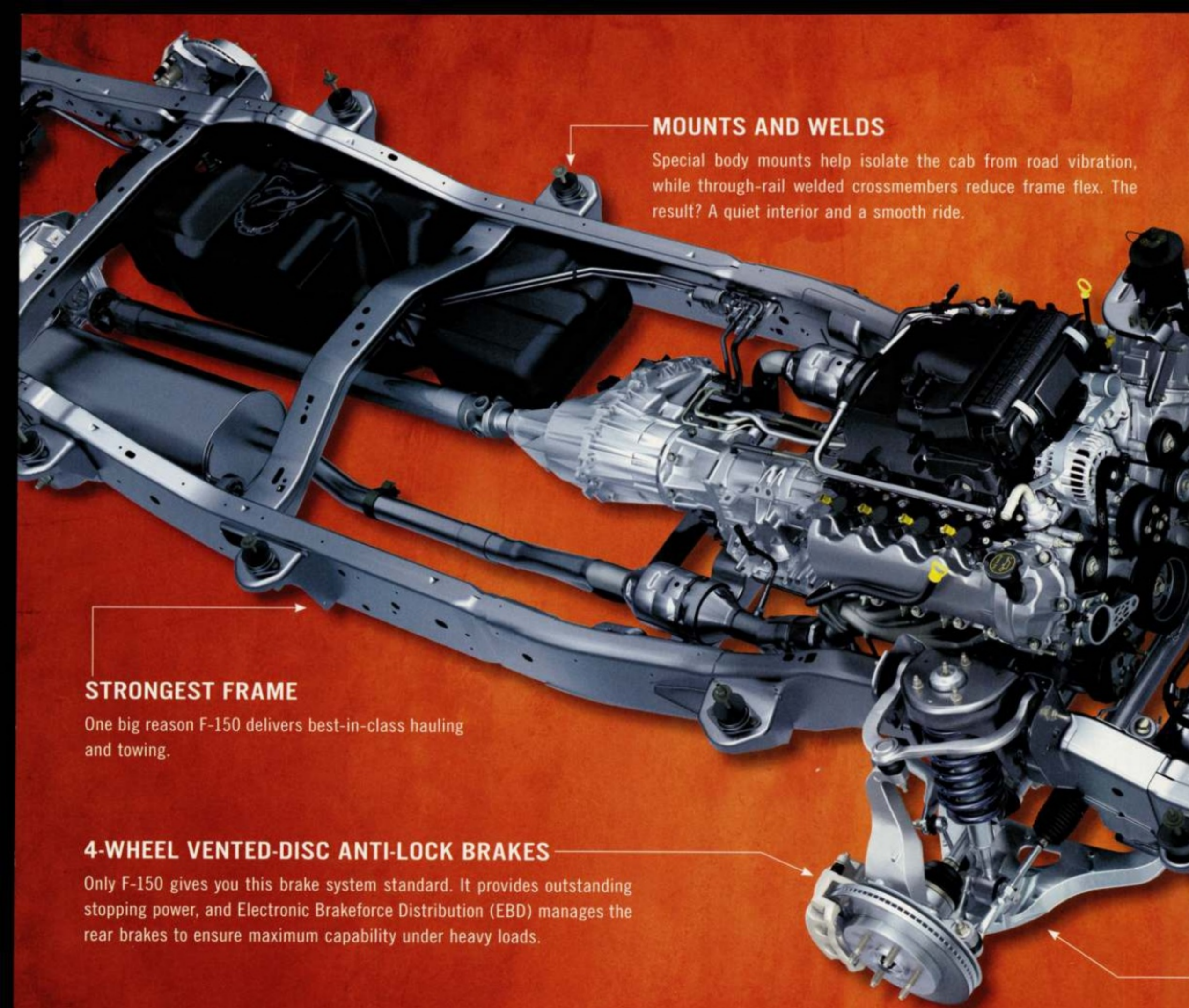
CLASS EXCLUSIVES

- 4-Door Regular Cab
- Standard 4-Wheel Vented-Disc Anti-Lock Brakes with Electronic Brakeforce Distribution
- Outboard-Mounted Rear Shocks
- 5.4L Triton® V8 3-Valve Heads with Variable Cam Timing
- Overhead Rail Modular Interior Storage System
- SuperCab Rear-Door Power Windows

*Properly equipped Full-size Pickups under 8500 lbs. GVWR and priced below \$39,000.

BUILT

TOUGH



MOUNTS AND WELDS

Special body mounts help isolate the cab from road vibration, while through-rail welded crossmembers reduce frame flex. The result? A quiet interior and a smooth ride.

STRONGEST FRAME

One big reason F-150 delivers best-in-class hauling and towing.

4-WHEEL VENTED-DISC ANTI-LOCK BRAKES

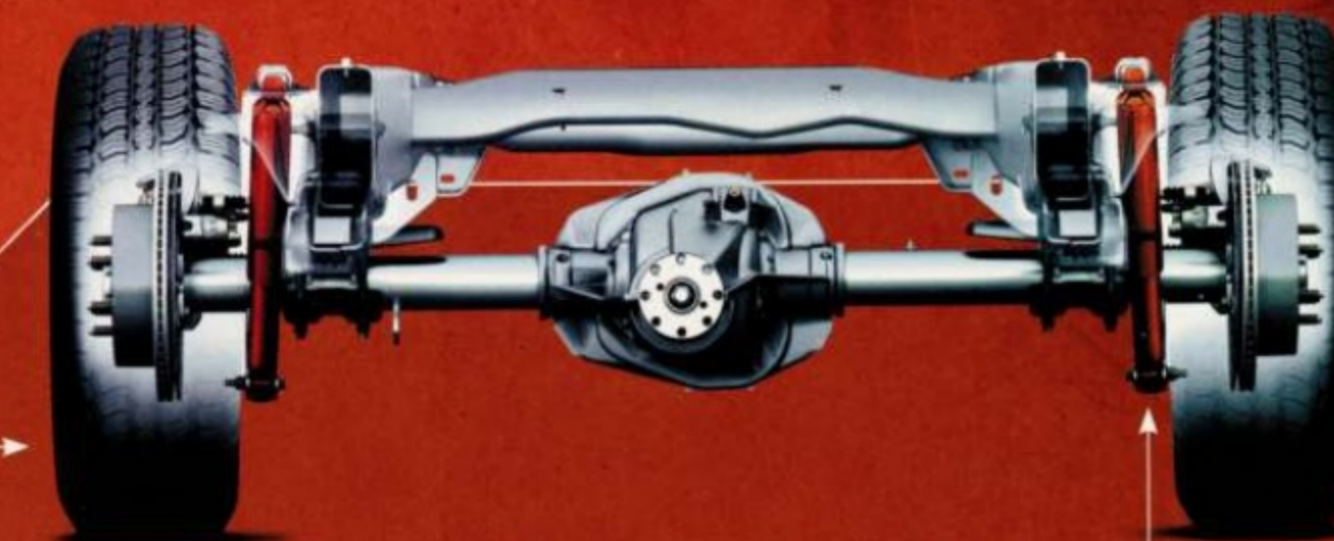
Only F-150 gives you this brake system standard. It provides outstanding stopping power, and Electronic Brakeforce Distribution (EBD) manages the rear brakes to ensure maximum capability under heavy loads.

BUILT LIKE A FREIGHT TRAIN

F-150's strengths go far beyond its brawny capabilities. Slam a door, hook up a big trailer, or hit a rugged stretch of trail, and you'll know exactly what we mean. This F-150 is built on fully boxed frame rails, which help make it the strongest frame in the class. Plus, innovative engineering, premium materials and solid build quality are apparent inside and out. So while you appreciate its best-in-class towing and payload numbers, you'll also enjoy a truck that rides and handles like anything but a truck. Now, check out some of the many features that have changed what drivers expect from a full-size pickup. One drive in an F-150, and you'll know you're on the right track.



www.fordvehicles.com



TIRE PRESSURE MONITORING SYSTEM*

NEW for 2007; standard feature. An instrument panel light alerts you when the system detects a significant pressure loss in any road tire.

*Not available with Heavy-Duty Payload Package.

OUTBOARD-MOUNTED REAR SHOCKS

This class-exclusive feature locates the rear shocks outside the frame rails to help reduce body lean and to control axle motion on washboard surfaces. The heavyweight 3" rear leaf springs are the same width used on F-250/F-350 Super Duty,® to provide enhanced control and capability.

HYDROFORMED FRONT FRAME RAILS

Hydroform molding provides consistent material thickness, decreased thermal fatigue and increased strength; all-important features for the components that support the engine, transmission and front suspension.

COLLAPSIBLE FRONT HORNS

Stamped-steel "horns" that help manage crash forces are positioned forward of the front frame rails.

COIL-OVER-SHOCK FRONT SUSPENSION

With class-exclusive cast-aluminum lower control arms, this double-wishbone setup responds quickly, providing excellent ride and control.



Dramatization using 2005 F-150. Underbody digitally modified.

STRENGTH

In the dramatic demonstration above, 2 bulldozers crush a production-model F-150. Even after this brutal attack, the passenger cabin remains intact and the doors open and close easily. This remarkable strength has helped F-150 earn the National Highway Traffic Safety Administration's top rating of 5 Stars for the driver and right-front passenger in the 2006 frontal crash category.

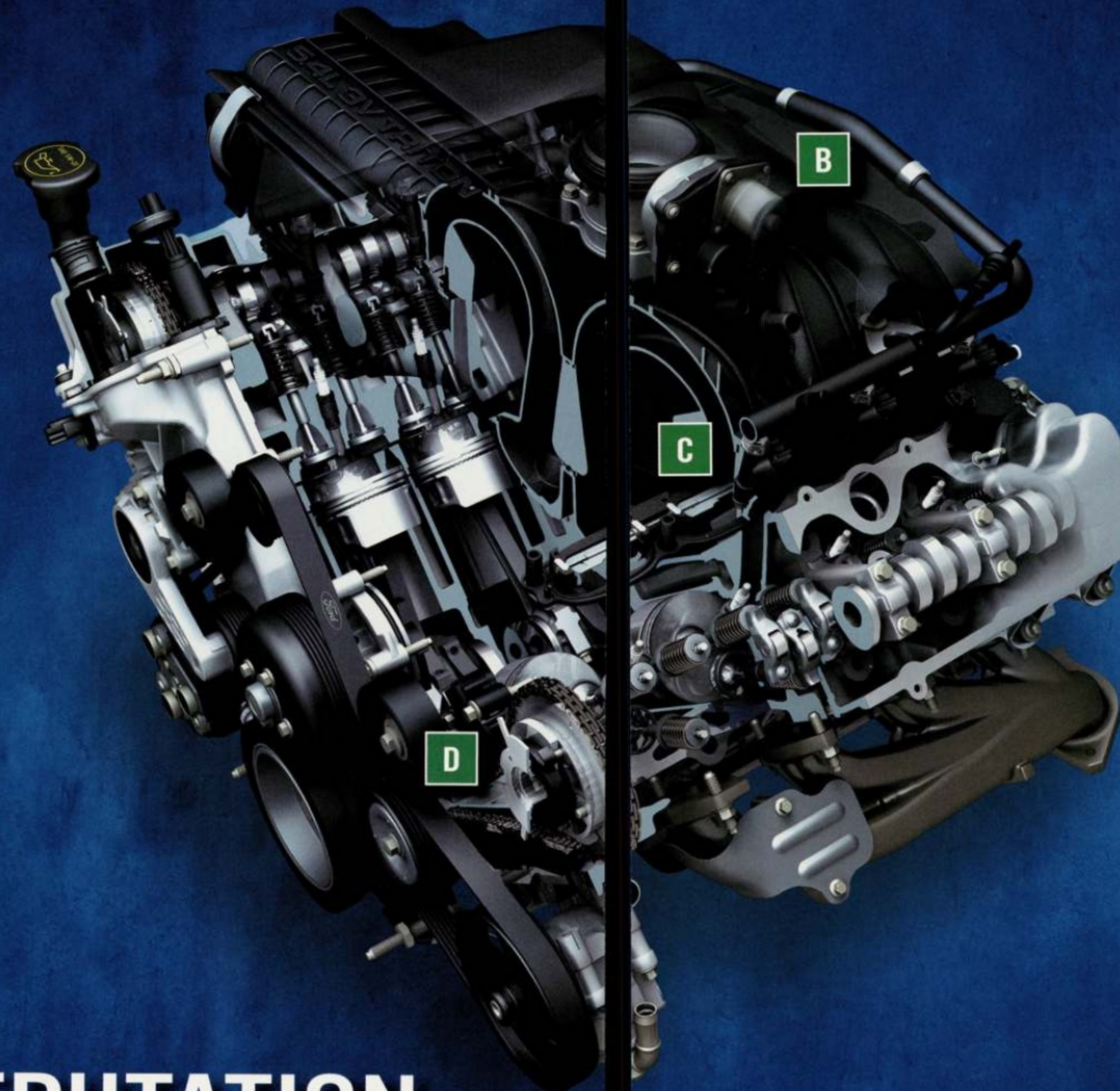
A Foundation Designed for the Toughest Tasks

F-150

5.4 TRITON

5.4L FLEXIBLE FUEL ENGINE

Ford Flex-Fuel Vehicles (FFVs) give you the power of choice. E85 or gasoline? As a no-cost option on the 5.4L Triton® V8, FFV lets you decide right at the pump. The F-150 FFV can run on E85 (85% ethanol/15% gasoline), straight gasoline, or any combination of the two – just fill up with your fuel of choice. As you drive, the Powertrain Control Module determines the ethanol/gas mixture, and automatically adjusts for optimum performance. Since Ford introduced E85 FFVs back in the mid-1990s, we've put nearly 2 million on the road, with refinements being made all along the way. The benefits of ethanol-based fuel are substantial: It produces significantly less greenhouse gas (GHG), it can be made from renewable domestic crops such as corn, and switching to E85 has the potential to reduce our dependence on imported oil. Ford is offering FFV technology to deliver these benefits to you.



EVERY 5.4L TRITON V8 FEATURES:

A 3-VALVE DESIGN

Two intake valves per cylinder allow about 100 cu. ft. per minute more fuel/air flow than a single intake valve. One oversize exhaust valve quickly removes burned gases. The overall benefit is optimal power and efficiency.

B ELECTRONIC THROTTLE CONTROL

Standard on all F-150 engines, this drive-by-wire technology uses electronic servos instead of a mechanical linkage to control throttle actuation. The result is seamless engine response, optimal fuel efficiency and reduced emissions.

C CHARGE MOTION CONTROL VALVES

Inside the intake runners, butterfly valves tumble the fuel/air mixture to improve combustion and power production at low engine speeds.

D VARIABLE CAM TIMING

Allows the valves to be operated at different points in the combustion cycle, delivering performance tailored to engine speed and load. More low-speed torque to get big loads under way. More high-speed power for passing acceleration and efficient highway cruising.

A POWERFUL REPUTATION

What makes F-150 so popular? Built Ford Tough engines get a lot of the credit. With a properly equipped chassis, the fuel-efficient 4.2L V6 can haul up to 1910 lbs. and tow up to 5600 lbs. For 2007, the 4.6L Triton V8 moves up to 248 hp and 294 lb.-ft. of torque, and kicks capacities up to 1970 lbs. and 7200 lbs. And with 85% of its low-end torque on tap at just 1500 rpm, the mighty 5.4L 3-valve Triton V8 powers F-150 to a maximum payload of 3050 lbs. and towing of 10,500 lbs., both best-in-class.*

Yet for all their brute strength, each engine delivers smooth, quiet performance. Powerful reasons to drive F-150.

4.2L EFI V6 PERFORMANCE

Pumping out 202 hp and 260 lb.-ft. of torque, this V6 delivers smooth, quiet operation, responsive performance, and load-handling power. It features a split-port induction (SPI) system that helps optimize fuel efficiency and engine response. Available with a 4-speed automatic or 5-speed manual transmission.

*Require Heavy-Duty Payload Package (late availability). Maximum loaded trailer weights. Combined weight of towing vehicle (including hitch, passengers and cargo) and loaded trailer must not exceed Gross Combined Weight Rating (GCWR). See RV and Trailer Towing Guide for requirements and restrictions.



TOW-AWAY ZONE

Don't plan on leaving your trailer too long in one spot when there's an F-150 around. Its optional 5.4L 3-valve Triton V8 uses 3-valve cylinder heads to boost output to 300 hp and 365 lb.-ft. of torque. Outstanding low-end punch starts at just 1500 rpm to get serious weight moving in a hurry. And variable cam timing creates a broad powerband, so the muscle sticks around for an easy ride to your destination. F-150 is the first full-size pickup to use 3-valve technology to optimize horsepower and low-end torque. Now, where's that trailer?

F-150

XL

MAX TOWING (lbs.)	
4.2L V6	5600
4.6L Triton V8	7200
5.4L Triton V8	10,500*

Note: Maximum loaded trailer weights. The combined weight of the vehicle (including hitch, passengers, cargo and loaded trailer) must not exceed the Gross Combination Weight Rating (GCWR).

MAX PAYLOAD (lbs.)	
4.2L V6	1910
4.6L Triton V8	1970
5.4L Triton V8	3050*

Note: Maximum loaded cargo weights. The weight of the vehicle (including passengers and cargo) must not exceed the Gross Vehicle Weight Rating (GVWR).

F-150 XL Regular Cab 4x4 in Forest Green Metallic with optional XL Décor Group and Heavy-Duty Payload Package* (see page 20 for XL and STX standard equipment)

BROAD SHOULDERS

F-150 XL is the cornerstone work truck, with all the rugged components that deliver renowned F-150 performance. Fully boxed frame rails, a beefy suspension, and standard 4-wheel vented-disc anti-lock brakes define this great pickup. A standard 4.2L V6 on 4x2 with an available 5-speed manual transmission or 4-speed automatic provides ample capabilities. For even more muscle, step up to the 4.6L or 5.4L 3-valve Triton® V8. Properly equipped, it can haul up to 3050 lbs.,* or tow all the way up to 10,500 lbs.* F-150 XL has a work ethic that's just as strong as yours.

*Requires Heavy-Duty Payload Package (late availability).



OFFERING YOU MORE

(ABOVE RIGHT) Standard Tailgate Assist™ lends a hand when you open and close F-150's extra-large tailgate.

(LEFT) Only one Regular Cab pickup gives you 4 doors, and best-in-class interior room, including 17 cu. ft. of secure storage.



STARE FACTOR

F-150 STX grabs the spotlight with a body-color grille surround and bumpers, plus 17" chrome-clad steel wheels and more. An optional Audiophile® AM/FM/6-disc in-dash CD system with MP3 capability (right) and subwoofer plays pure digital clarity. A new auxiliary audio input jack on all CD sound systems lets you connect any compatible device. And choose SIRIUS Satellite Radio** for over 125 channels of digital-quality programming, including sports, news, talk, entertainment and 100% commercial-free music. It even includes 6 months of service. Here's a truck that's about being seen, being heard *and* being tough: F-150 STX.

SIRIUS
SATELLITE RADIO



**Factory-installed option. See your Ford Dealer or contact SIRIUS at 1-888-539-7474 for more information.

STX



BUILT
Ford
TOUGH

www.fordvehicles.com

F-150 STX in Bright Red with available Flareside Box and other optional equipment

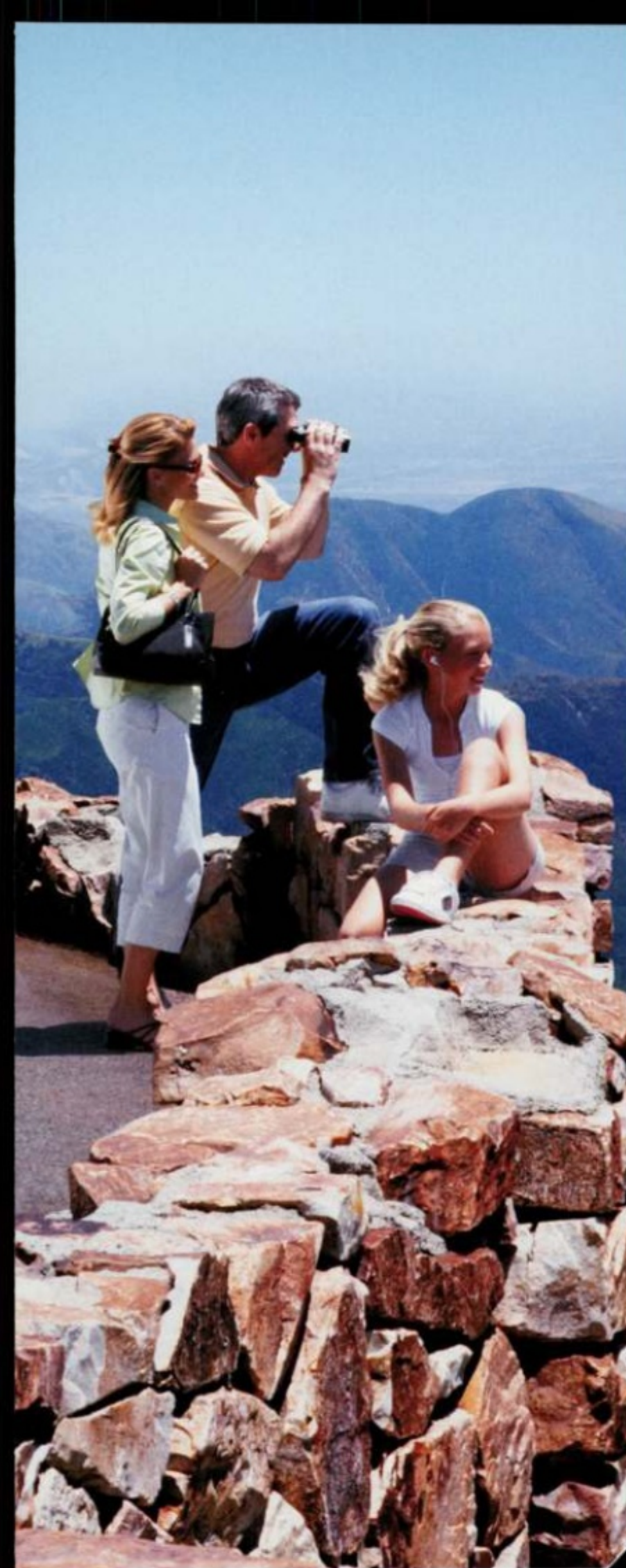
2007 Ford F-150 XL and STX



NEW OPTIONS

- Telescoping Trailer Tow Mirrors*
- XLT Chrome Package**

F-150 XLT SuperCrew in Dark Shadow Grey with optional 6.5-ft. box, dealer-installed Genuine Ford Accessories, and more.



XLT STANDARD EQUIPMENT

Includes STX Standard Features, Plus:

- NEW Chrome Grille Surround with Black Honeycomb Insert
- Chrome Front and Rear Step Bumpers
- Power Windows and Door Locks
- 2nd-Row Power Windows (SuperCab and SuperCrew)
- Power Sideview Mirrors
- Remote Keyless Entry
- Premium Cloth 40/20/40 Split Front Seat with Driver's Manual Lumbar
- Cruise Control
- Autolamp Automatic On/Off Headlamps
- Color-Coordinated Carpet and Floor Mats
- Outside Temperature and Compass
- Front Tow Hooks (4x4)

OPTIONAL:

- XLT Chrome Package
- SIRIUS Satellite Radio
- Deluxe Mirror Package
- 17" Machined-Aluminum Wheels with Painted Accents
- Two-Tone Exterior Paint

INTERIOR CHOICES

You can opt for premium cloth captain's chairs with driver's manual lumbar and center console (below), or stick with the standard premium cloth 40/20/40 split front seat. SuperCab and SuperCrew both feature a 60/40 split flip-up rear bench.

OPTIONAL POWER MOONROOF



2ND-ROW POWER WINDOWS (SUPERCAB AND SUPERCREW)

MOST VERSATILE PLAYER

F-150 XLT is the true all-around player in the F-150 lineup. It's available with every cab size, body style, box size and engine option, in 4x2 or 4x4. From the best-in-class interior volume Regular Cab and SuperCab, to the spacious SuperCrew, XLT is ready to take on your busy life. Check out its long list of standard features to find out why it's the odds-on pick. If hauling and towing are high priorities, the optional Heavy-Duty Payload Package* equips XLT to handle maximum loads. And this year, the new XLT Chrome Package** lets you add even more style to one of the best-looking trucks on the road. Any way you look at it, F-150 XLT has earned its MVP status.

*Late availability. **Not available on Regular Cab or Heavy-Duty Payload Package. Late availability.



www.fordvehicles.com





DOUBLE TAKE

Here's the newest member of the Built Ford Tough line, and it's packed with great features that are sure to turn heads. New FX2 SPORT brings serious custom looks to its agile 4x2 drivetrain. Outside, monochrome paint, a billet-style grille, 18" FX2 SPORT-exclusive wheels, plus medium platinum-bezel headlamps set the tone. Inside, captain's chairs, unique trim, and a flow-through console with floor shifter are center stage. FX2 SPORT is powered by a standard Triton® V8 – providing all the force you need in town or on the open highway. But don't pass by too fast. Everyone will want a chance to take a second look.



FX2 SPORT

FX2 SPORT SPECIAL EQUIPMENT

Optional on XLT SuperCab or SuperCrew with Styleside Box. Adds to XLT Standard Features:

- Dark-Accent Billet-Style Grille with Body-Color Surround
- Body-Color Bumpers and Lower Valance
- Unique 18" Machined-Aluminum Wheels with Painted Accents
- Chrome Exhaust Tip
- Unique Clear Headlamps with Medium Platinum Bezel
- Power Heated Sideview Mirrors with Turn-Signal Indicator, Auto-Dimming Driver's Side and Body-Color Skullcaps
- Unique FX2 SPORT Cluster/Center Stack Finish and Ebony Interior Accents
- Leather-Trimmed Steering Wheel with Cruise Control
- Black/Red Sport Cloth Front Captain's Chairs with Dual Manual Lumbar and Power Driver's Seat
- Flow-Through Console and Floor Shifter

OPTIONAL:

- 20" 6-Spoke Machined-Aluminum Wheels
- Body-Color Tubular Running Boards
- Black Leather-Trimmed Seats with Red Stitching



INTERIOR

Available in SuperCab or SuperCrew, optional black leather-trimmed front seats are embroidered with the SPORT logo and red-stitched seams. A unique gauge cluster puts you in command.



www.fordvehicles.com

NEW F-150 FX2 SPORT SuperCab in Redfire Metallic with optional equipment

F-150 FX4 SuperCab with optional Black sport leather-trimmed front captain's chairs with flow-through center console and floor shifter, and other options



SKID PLATES

Steel plates protect the front crossmember and transfer case, and a composite plate guards the fuel tank.



FX4 OFF ROAD

FX4 STANDARD EQUIPMENT

Includes XLT Standard Features, Plus:

- 5.4L 3-Valve Triton® V8 with 4-Speed Automatic
- Electronic Shift-On-the-Fly (ESOF) 4x4
 - Skid Plates and Off-Road Shocks
 - Limited-Slip Rear Axle
 - Front Tow Hooks and Fog Lamps
- 18" Machined Cast-Aluminum Wheels
- Black H-Bar Grille with Body-Color Surround
- Sport Cloth 40/20/40 Split Front Seat
- Black Leather-Wrapped Steering Wheel
 - Black Rubber Off-Road Floor Mats

OPTIONAL:

- FX4 Luxury Package
- 20" 6-Spoke Machined-Aluminum Wheels
- SIRIUS Satellite Radio
- NEW DVD-Based Navigation System*
- Two-Tone Exterior

*Requires FX4 Luxury Package and Audiophile® Sound System.



THE DIRT ON OFF-ROAD

Back in the day, Henry Ford was off-roading before the sport had a name. And in the generations that followed, F-Series trucks have conquered badlands from the Huron Mountains to the Mojave Desert. Today, FX4 OFF-ROAD takes style and capability to new levels with rugged good looks and the off-road toughness of the most capable F-150 ever. For everything from serious rock crawling to cruising the town, FX4 is all the 4x4 you need.



www.fordvehicles.com



F-150 FX4 SuperCab Flareside in Bright Red/Dark Shadow Grey two-tone with optional FX4 Luxury Package, 20" machined-aluminum wheels and available equipment



F-150 LARIAT SuperCrew 4x4 in White Sand Tri-Coat Metallic with optional LARIAT Chrome Package, 6.5-ft. box and other equipment



F-150

LARIAT 5.4 TRITON

LARIAT STANDARD EQUIPMENT

Requires SuperCab or SuperCrew with Styleside Box. Includes FX4 Standard Features, Plus:

- Leather-Trimmed 40/20/40 Split Front Seat with Power Driver's Seat and Dual Manual Lumbar
- Leather-Wrapped Steering Wheel with Secondary Audio and Climate Controls
- Message Center with Trip Computer
- Electronic Automatic Temperature Control (EATC)
- Rear Window with Privacy Glass and Defroster
- Auto-Dimming Rearview Mirror
- Visors with Lighted Covered Mirrors
- Color-Coordinated Carpet and Floor Mats
- 18" Bright-Aluminum Wheels
- Chrome Front and Rear Step Bumpers and Body-Color Wheel-Lip Moldings
- Light Pueblo Gold Honeycomb Grille with Chrome Surround
- Power Heated Sideview Mirrors with Turn-Signal Indicator and Auto-Dimming Driver's Side

OPTIONAL:

- LARIAT Chrome Package
- 20" 6-Spoke Machined-Aluminum Wheels
- NEW DVD-Based Navigation System
- SIRIUS Satellite Radio
- Rear-Seat DVD Entertainment System with 8" screen
- Power Moonroof
- Power-Sliding Rear Window
- Overhead Rail Storage System
- Deluxe Heated Seats Package
- Two-Tone Exterior



NEW SLIMLINE DVD ENTERTAINMENT SYSTEM WITH 8" SCREEN

20" MACHINED-ALUMINUM WHEELS



YOU'VE EARNED A BONUS

As a reward for years of hard work and accomplishment, nothing says success like F-150 LARIAT. Outside, it's a great-looking pickup you'll be proud to have in your driveway. Inside, an impressive list of standard features makes it as comfortable for a night on the town as it is for workdays on the road. Already one of the best-equipped trucks out there, a wide array of options can make your LARIAT reflect your own sense of style. It's congratulations for your jobs well-done, and preparation for the work to come: F-150 LARIAT.



www.fordvehicles.com



LEADING THE WAY

A NEW DVD-Based Navigation System option utilizes GPS to help you keep your bearings anywhere in the U.S. It features a 6.5" touch screen, points of interest, and intersection programming that calls out the names of approaching streets. (Optional equipment shown.)



KING RANCH F-150 SPECIAL EQUIPMENT

Adds to LARIAT SuperCrew Standard Features:

- Castaño Leather-Trimmed, Power/Heated Front Captain's Chairs with Manual Lumbar, Memory Driver's Seat and King Ranch Badges
- Castaño Leather-Trimmed Front Flow-Through Console and Steering Wheel
- Castaño Leather-Trimmed 60/40 Split Fold-Up Rear Bench Seat
- 18" 7-Spoke Cast-Aluminum Wheels with King Ranch "Running W" Center Caps
- Two-Tone Exterior
- H-Bar Grille with Chrome Surround
- Pueblo Gold Platform Running Boards, Box Top and Tailgate Moldings
- Power-Folding Sideview Mirrors with Puddle Lamps and Auto-Dimming Driver's Side
- King Ranch Badges with "Running W" Brand
- And Much More

OPTIONAL:

- 20" 6-spoke Machined-Aluminum Wheels
- NEW DVD-Based Navigation System
- SIRIUS Satellite Radio
- Power Moonroof



LIGHTED RUNNING BOARDS



POWER-FOLDING HEATED MIRRORS



F-150 King Ranch SuperCrew interior with available equipment



SADDLE UP

King Ranch® is a legendary 825,000-acre spread where one man still rides lead on the roundup. It's also the F-150 that lives and breathes the spirit of the West. This pickup boasts all the exterior appointments and interior comforts that make it top-of-the-line, but don't let the Castaño leather and fancy trim fool you. Only a truck that's Built Ford Tough is worthy of the "Running W" brand. Ready for a Friday-night social or rugged days on the trail, King Ranch F-150 is crafted in the traditions of hospitality and hard work. You'll always ride tall in this saddle.



www.fordvehicles.com



F-150 King Ranch SuperCrew in Dark Copper/Pueblo Gold two-tone

HARLEY-DAVIDSON



FORD HARLEY-DAVIDSON™ F-150 SPECIAL EQUIPMENT

Adds to LARIAT SuperCrew Standard Features:

- Monochromatic Black or Dark Amethyst Metallic Paint
 - Dimensional Chrome "Harley-Davidson" Box-Side Lettering with Unique Bodyside and Windshield Graphics
 - Chrome Billet-Style Grille with Body-Color Surround
 - Blacked-Out Headlamps and Smoked Taillamps
 - Sport-Tuned Shocks and V-Rated Tires
 - 22" Polished Forged-Aluminum Wheels with Bar & Shield Logo on Center Caps
 - Body-Color Ground Effects with Bright Accents
 - Rubber Bed Mat with HARLEY-DAVIDSON Bar & Shield Logo
 - "Harley-Davidson F-150" Badges
 - Black Leather-Trimmed Front Captain's Chairs and 60/40 Split Flip-Up Rear Bench with HARLEY-DAVIDSON Bar & Shield Logo Badges
 - Leather-Trimmed Flow-Through Console
 - Power/Memory Performance Pedals
 - High-Gloss Piano-Black Interior Accents
 - And Much More
- OPTIONAL:
- All-Wheel Drive



THE RIDE OF YOUR LIFE

Built Ford Tough and Harley-Davidson have joined forces to create the ultimate 4-wheel freedom machine. From its sport-tuned shocks to its fat V-rated tires on massive 22" polished forged-aluminum wheels, this jam-packed SuperCrew is built for performance — especially when you select the all-weather, road-hugging capability of optional All-Wheel Drive. And there's plenty of "show" along with the "go," including a truckload of styling cues straight out of Milwaukee. Check out the chrome billet-style grille, tuned exhaust with dual chrome pipe outlet, and famed Bar & Shield logos in all the right places. It's time to mount up and ride in a rugged F-150 with a Harley-Davidson soul.

HIGH-GLOSS INTERIOR | CHROME TUNED EXHAUST OUTLET | 22" WHEELS



HARLEY-DAVIDSON STYLE

Bold spun-metal gauges with chrome surrounds and "Harley-Davidson" script communicate key information. The cabin features front captain's chairs trimmed in full-grained black leather, a high-gloss flow-through center floor console, and a leather-wrapped steering wheel. Piano-black veneer, famed Bar & Shield logos, and a custom serialization plate say, "Let's ride." Climb in, turn the key, and head for the horizon.



www.fordvehicles.com

Ford Harley-Davidson™ F-150 SuperCrew AWD in Black with available equipment

SPECIFICATIONS

MODEL LINEUP

Each series includes the standard equipment of the previous series, except where additions/exceptions are noted. Vehicles shown may contain optional equipment.



XL

Argent front and rear step bumpers • Black grille surround, H-bar grille and front bumper upper fascia • Black manual sideview mirrors • 17" styled-steel wheels • Solar-tinted glass with fixed rear window • AM/FM stereo with clock • Visors with driver's-side strap and passenger-side mirror • Black vinyl floor covering • Vinyl 40/20/40 split front seat • Black urethane steering wheel • Tire Pressure Monitoring System • Display center • Rear vinyl 60/40 split flip-up seat (SuperCab)



STX

Body-color front and rear step bumpers • Body-color grille surround and front bumper upper fascia • AM/FM stereo with single-CD player • 17" chrome-clad steel wheels • Cloth 40/20/40 split front seat with driver's manual lumbar • Front-seat center armrest with storage bin and cupholders (available Flareside model shown)



XLT

Chrome front and rear step bumpers • Black honeycomb-style grille with chrome surround • Remote keyless-entry system • Power sideview mirrors • 17" chrome-clad steel wheels • Autolamp • Power accessory delay • Color-coordinated carpet and floor mats • Tachometer • Cruise control • Color-coordinated steering wheel • Power windows, including 2nd-row on SuperCab and SuperCrew • Outside temperature and compass display • Premium cloth 40/20/40 split front seat • Rear 60/40 split flip-up seat (SuperCab or SuperCrew)



FX4

FX4 OFF-ROAD decals • Color-coordinated front and rear step bumpers • Black H-bar grille with body-color surround • Dark grey wheel-lip moldings • Black leather-wrapped steering wheel • Black rubber off-road floor mats • Sport cloth 40/20/40 split front seat with driver and right-front-passenger manual lumbar • 18" machined cast-aluminum wheels • Electronic Shift-On-the-Fly 4x4 • Limited-slip rear axle • Off-road tuned shocks • Skid plates – 2 steel (front crossmember and transfer case), 1 composite (fuel tank)



LARIAT

Chrome front/rear step bumpers and color-coordinated wheel-lip moldings (with monotone paint) • Pueblo Gold front/rear step bumpers and wheel-lip moldings (with two-tone paint) • Light Pueblo Gold honeycomb-style grille with chrome surround • Power, heated sideview mirrors with turn-signal indicator and auto-dimming driver's side • 18" bright-aluminum wheels • Lighted, covered visor vanity mirrors • Electronic Automatic Temperature Control • Rear-window defroster • Carpeted floor mats • Message center • Color-coordinated, leather-wrapped steering wheel with secondary audio and climate controls • Power driver's seat • Leather-trimmed front seats • Auto-dimming rearview mirror



STANDARD FEATURES

MECHANICAL

100,000-mile tune-up interval*
Electronic Brakeforce Distribution (EBD)
Fail-safe engine cooling system
Gas-pressurized shock absorbers
Hood-open assist mechanisms
Lightweight aluminum hood
Maintenance-free 58-amp.-hr. 540-CCA battery with battery saver
Power 4-wheel vented-disc brakes with Anti-lock Brake System (ABS)
Power rack-and-pinion steering
Spare tire with wheel lock
Stabilizer bar – Front
Stainless steel exhaust system (major components)
Suspension – Front: long-spindle, double-wishbone coil-over-shock
Tire Pressure Monitoring System
Trailer tow – 4-pin connector

SAFETY/SECURITY

Personal Safety System® for driver and right-front passenger – Includes dual-stage front airbags,** safety belt pretensioners, safety belt energy-management retractors, safety belt usage sensors, driver's-seat position sensor, crash severity sensor, restraint control module and Front-Passenger Sensing System†
2-point front center restraint (SuperCab and SuperCrew)
3-point restraints – All front-outboard seating positions, all rear-seat positions and Regular Cab front center position
Alert chimes – Headlamps-on, key-in-ignition, safety belt
Belt-Minder® safety belt reminder – Driver and right-front passenger
Brake/shift interlock
Fuel pump inertia shutoff switch
LATCH – Lower anchors and tether anchors for child-safety seats
Non-SIR restraints – Driver and right-front passenger (SuperCrew only)
Seat-Integrated Restraints (SIR) – Driver and right-front passenger (Regular Cab and SuperCab only)
SecuriLock® passive anti-theft system
Side-intrusion door beams

INTERIOR

Assist/grab handles – Driver and right-front passenger
Coat hooks – 2
Cupholders – Front, 2 on instrument panel (n/a with mechanical shift-on-the-fly) and 1 in each front-door map pocket
Display center
Front dome/map lights
Front-door map pockets
Gauges – Fuel, voltmeter, oil pressure, engine coolant temperature, speedometer and odometer
Glove compartment
Horn – Dual-note
Power points – Front (all models), rear (in SuperCab and SuperCrew models)
Tilt steering wheel

EXTERIOR

Cargo box lamp – Integrated into center high-mounted stop lamp
Cargo box tie-downs – 4
Headlamps – Aerodynamic clear-lens quad-beam halogen
Stake-bed pockets (n/a with Flareside or 5.5' box)
Tailgate – Removable with key lock and Tailgate Assist™
Windshield wipers – Intermittent

*Under normal driving conditions with routine fluid and filter changes.

**Always wear your safety belt, and in SuperCab and SuperCrew models, always secure children in the rear seat.

†Right-front passenger seat only.

SPECIFICATIONS

FEATURES & OPTIONS

	XL	STX	XLT	FX4	LARIAT
MECHANICAL					
4.2L V6 with 5-speed manual O/D (n/a with Flareside; 4x2 Regular Cab only)	●	●	●	●	●
4.2L V6 with 4-speed automatic O/D (4x2 Regular Cab only)	○	○	○	○	○
4.6L SOHC Triton® V8 with electronic 4-speed auto. O/D	●	●	●	●	●
5.4L SOHC 3-valve Triton V8 with electronic 4-speed auto. O/D	○	○	○	○	○
5.4L SOHC 3-valve FFV (Flex. Fuel) Triton V8 with electronic 4-speed auto. O/D*	○	○	○	○	○
Axle upgrade (see Axle Availability chart for details)	○	○	○	○	○
Axle - Limited-slip rear (see Axle Availability chart for details)	○	○	○	○	○
17" grey styled-steel wheels	○	○	○	○	○
17" machined-aluminum wheels	○	○	○	○	○
17" chrome-clad steel wheels	○	○	○	○	○
17" machined-aluminum wheels with painted accents	○	○	○	○	○
17" 7-lug grey steel wheels (requires Heavy-Duty Payload Package; Regular Cab and SuperCab only)	○	○	○	○	○
18" machined cast-aluminum wheels	○	○	○	○	○
18" bright-aluminum wheels	○	○	○	○	○
20" 6-spoke machined-aluminum wheels	○	○	○	○	○
P235/70R17 all-season BSW tires (5), 4x2 (Regular Cab and SuperCab)	○	○	○	○	○
P235/75R17 all-terrain BSW tires (5), 4x4 (Regular Cab and SuperCab)	○	○	○	○	○
P255/65R17 all-season OWL tires (4), 4x2 (optional on XLT Regular Cab and SuperCab, standard on SuperCrew)	○	○	○	○	○
P255/70R17 all-terrain OWL tires (5), 4x4 (optional on XLT Regular Cab and SuperCab, standard on SuperCrew)	○	○	○	○	○
P265/60R18 all-season OWL tires (5), 4x2	○	○	○	○	○
P275/65R18 all-terrain OWL tires (4), 4x4	○	○	○	○	○
P275/55R20 all-terrain OWL tires (4)	○	○	○	○	○
LT245/70R17D all-terrain BSW tires (5), 4x2/4x4 (requires Heavy-Duty Payload Package - Regular Cab and SuperCab only)	○	○	○	○	○
LT275/65R18C all-terrain OWL tires (4), 4x4	○	○	○	○	○
Fuel tank - 26-gallon (126" WB on Regular Cab and 133" WB on SuperCab)	○	○	○	○	○
Fuel tank - 27-gallon	○	○	○	○	○
Fuel tank - 30-gallon (SuperCrew 5.5' box)	○	○	○	○	○
Fuel tank - 35.7-gallon (Regular Cab 8' box and SuperCab 6.5' box)	○	○	○	○	○
Traction Control (4x2 V8 only)	○	○	○	○	○
Reverse Sensing System (requires Trailer Tow Package)	○	○	○	○	○
4x4-ONLY FEATURES					
Mechanical shift-on-the-fly transfer case (Regular Cab and SuperCab)	○	○	○	○	○
Electronic Shift-On-the-Fly (ESOF) transfer case (std. on SuperCrew)	○	○	○	○	○
Skid plates - Steel plates for front crossmember and transfer case; composite plate for fuel tank	○	○	○	○	○
Tow hooks - 2 front	○	○	○	○	○
SEATING					
Front vinyl 40/20/40 split	○	○	○	○	○
Front cloth 40/20/40 split with driver's manual lumbar	○	○	○	○	○
Front premium cloth 40/20/40 split with driver's manual lumbar	○	○	○	○	○
Front sport cloth 40/20/40 split with dual manual lumbar	○	○	○	○	○
Front leather-trimmed 40/20/40 split with dual manual lumbar	○	○	○	○	○
Front cloth captain's chairs with center console and driver's manual lumbar (SuperCab only; 4x4 requires ESOF)	○	○	○	○	○
Front vinyl captain's chairs with center console (SuperCab only; 4x4 requires ESOF)	○	○	○	○	○
Front premium cloth captain's chairs with center console and driver's manual lumbar (SuperCab and SuperCrew only; SuperCab 4x4 requires ESOF)	○	○	○	○	○
Front sport cloth captain's chairs with flow-through console and floor shifter** (SuperCab and SuperCrew only)	○	○	○	○	○
Front sport leather-trimmed captain's chairs with flow-through console and floor shifter** (SuperCab and SuperCrew only)	○	○	○	○	○
Front leather-trimmed captain's chairs with flow-through console and floor shifter	○	○	○	○	○
Power driver's seat (SuperCab and SuperCrew only)	○	○	○	○	○
Premium vinyl 60/40 split flip-up rear seat (SuperCab and SuperCrew only)	○	○	○	○	○

● Standard ○ Select Availability ○ Optional — Not Available

*Not available with Flareside Box, Heavy-Duty Payload Package or F-150 Harley-Davidson Package. **Requires power driver's seat. †Requires 5.4L engine on XL. ††Not available in Alaska or Hawaii.

Audiophile is a registered trademark of Audiophile, Inc.

*SIRIUS and related marks are registered trademarks of SIRIUS Satellite Radio Inc.

	XL	STX	XLT	FX4	LARIAT
INTERIOR					
Air conditioning - Manual†	○	○	○	○	○
Air conditioning - Electronic Automatic Temperature Control (EATC)	○	○	○	○	○
AM/FM stereo with clock	○	○	○	○	○
AM/FM stereo with single-CD player, auxiliary audio input jack and clock	○	○	○	○	○
AM/FM stereo/6-disc in-dash CD changer with MP3 capability, auxiliary audio input jack and clock	○	○	○	○	○
NEW Navigation System - DVD-based with in-dash screen (requires Audiophile Sound System)	○	○	○	○	○
Audiophile® Sound System - Includes 6-disc in-dash CD changer with MP3 capability, subwoofer and auxiliary audio input jack	○	○	○	○	○
SIRIUS Satellite Radio Package†† - Includes integrated satellite receiver, roof-mounted antenna and 6-month subscription	○	○	○	○	○
Autolamp - Automatic on/off headlamps	○	○	○	○	○
Black vinyl floor covering	○	○	○	○	○
Carpet - Color-coordinated with carpeted front and rear floor mats	○	○	○	○	○
Carpet - Color-coordinated with black rubber off-road floor mats	○	○	○	○	○
Carpet - Color-coordinated with carpeted floor mats and black rubber floor mats	○	○	○	○	○
Cruise control - Steering wheel-mounted	○	○	○	○	○
Cupholders - Rear, 2 (SuperCab and SuperCrew)	○	○	○	○	○
Display center - Includes odometer, low fuel, door ajar and more	○	○	○	○	○
Face-to-face interior lighting	○	○	○	○	○
Interior lights with rear dome light (SuperCab and SuperCrew only)	○	○	○	○	○
Message center/trip computer - Includes display center features plus distance-to-empty, average fuel economy, low oil pressure, check-engine temp, fail-safe engine cooling mode, low brake fluid and more	○	○	○	○	○
Outside temperature and compass display	○	○	○	○	○
Overhead mini-console with small storage bin (Regular Cab only)	○	○	○	○	○
Overhead Rail Storage System - Includes large storage bin and rear dome light (rear dome and map lights with SuperCrew) (SuperCab and SuperCrew only; n/a with power moonroof or Rear-Seat DVD Entertainment System)	○	○	○	○	○
Power accessory delay	○	○	○	○	○
Power-adjustable pedals (n/a with 4.2L V6 manual)	○	○	○	○	○
Power door locks with autolock	○	○	○	○	○
Power moonroof - Includes overhead mini-console without storage bin (SuperCab and SuperCrew only; n/a with Overhead Rail Storage System or Rear-Seat DVD Entertainment System)	○	○	○	○	○
Rear cargo storage unit (Regular Cab only; n/a with Audiophile Sound System)	○	○	○	○	○
Rear window - Fixed with solar tint	○	○	○	○	○
Rear window - Fixed with privacy tint	○	○	○	○	○
Rear window - Fixed with privacy tint and defroster	○	○	○	○	○
Rear window - Manual sliding with privacy tint (n/a with defroster)	○	○	○	○	○
Rear window - Power sliding with privacy tint (n/a with defroster; requires power driver's seat; SuperCab and SuperCrew only)	○	○	○	○	○
Steering wheel - Black urethane	○	○	○	○	○
Steering wheel - Color-coordinated urethane	○	○	○	○	○
Steering wheel - Black leather-wrapped	○	○	○	○	○
Steering wheel - Color-coordinated, leather-wrapped with secondary audio and climate controls	○	○	○	○	○
Tachometer (XL and STX w/manual trans. only)	○	○	○	○	○
Universal Garage Door Opener	○	○	○	○	○
Visors with passenger-side mirror	○	○	○	○	○
Visors with covered mirrors	○	○	○	○	○
Visors with lighted, covered mirrors	○	○	○	○	○
Windows - 1st-row manual	○	○	○	○	○
Windows - 1st-row power, solar-tinted, with one-touch-down driver's-side feature	○	○	○	○	○
Windows - 2nd-row fixed (XLT and FX4 Regular Cabs)	○	○	○	○	○
Windows - 2nd-row power (SuperCab and SuperCrew only)	○	○	○	○	○
EXTERIOR					
8' box - Styleside (Regular Cab)	○	○	○	○	○
8' box - Styleside (SuperCab with Heavy-Duty Payload Package only)	○	○	○	○	○
6.5' box - Styleside (Regular Cab)	○	○	○	○	○
6.5' box - Styleside (SuperCab)	○	○	○	○	○
6.5' box - Flareside (Regular Cab/SuperCab)	○	○	○	○	○

	XL	STX	XLT	FX4	LARIAT
EXTERIOR (continued)					
6.5' box - Styleside (SuperCrew)	○	○	○	○	○
6.5' box - Flareside (SuperCrew)	○	○	○	○	○
5.5' box - Styleside (SuperCab)	○	○	○	○	○
5.5' box - Styleside (SuperCrew)	○	○	○	○	○
Bed extender (only available with 5.5' box)	○	○	○	○	○
Bumper - Front with black upper fascia	○	○	○	○	○
Bumper - Front with body-color upper fascia	○	○	○	○	○
Bumpers - Front and rear step (all front bumpers with black lower valance)	○	○	○	○	○
Bumpers - Argent	○	○	○	○	○
Bumpers - Chrome (LARIAT with monotone paint)	○	○	○	○	○
Bumpers - Painted body-color (FX4 with monotone paint only)	○	○	○	○	○
Bumpers - Painted Pueblo Gold with two-tone only	○	○	○	○	○
Bumpers - Painted Dark Shadow Grey with two-tone only	○	○	○	○	○
Fog lamps (XL requires XL Décor Group)	○	○	○	○	○
Grille - Black surround	○	○	○	○	○
Grille - Body-color surround	○	○	○	○	○
Grille - Chrome surround	○	○	○	○	○
Grille - Black H-bar insert	○	○	○	○	○
Grille - Black honeycomb insert	○	○	○	○	○
Grille - Light Pueblo Gold honeycomb insert	○	○	○	○	○
Keyless-entry keypad - Driver's door-mounted	○	○	○	○	○
Remote keyless-entry with 2 fobs; illuminated entry w/panic button	○	○	○	○	○
Running boards - Black tubular (XLT Regular Cab only)	○	○	○	○	○
Running boards - Black platform (SuperCab and SuperCrew only)	○	○	○	○	○
Running boards - Body-color tubular (requires FX2 SPORT Package)	○	○	○	○	○
Running boards - 4" polished stainless steel tubular	○	○	○	○	○
Running boards - 5" chrome tubular (SuperCab and SuperCrew only; n/a with Harley-Davidson™ Package)	○	○	○	○	○
Sideview mirrors - Black, manual	○	○	○	○	○
Sideview mirrors - Black, power	○	○	○	○	○
Sideview mirrors - Black, power heated with turn-signal indicator and auto-dimming driver's-side feature	○	○	○	○	○
Sideview mirrors - Manual glass/telescoping trailer tow (late availability)	○	○	○	○	○
Sideview mirrors - Power glass/telescoping trailer tow with heat, turn-signal indicator and puddle lamps (late availability)	○	○	○	○	○
Sideview mirrors - Power heated, power-folding with turn-signal indicator and auto-dimming driver's-side feature (SuperCrew only)	○	○	○	○	○
Two-tone paint - Standard on FX4 Flareside	○	○	○	○	○
Wheel-lip moldings - Dark grey	○	○	○	○	○
Wheel-lip moldings - Body-color (LARIAT two-tone will be Pueblo Gold)	○	○	○	○	○
PACKAGES					
XL Décor Group - Includes manual air conditioning (Regular Cab), chrome front and rear bumpers, and cloth 40/20/40 split front seats	○	○	○	○	○
Trailer Tow Package (required for towing over 5000 lbs.) - Includes Class IV frame-mounted trailer hitch receiver, 7-pin wiring harness, upgraded radiator and auxiliary transmission oil cooler (optional heavy-duty 72-amp.-hr. battery)	○	○	○	○	○
Snow Plow Prep Package - Available with 4x4 only (requires Heavy-Duty Payload Package) and includes 4300-lb. maximum front springs/GAWR (Regular Cab and SuperCab only) (Note: Restrictions apply, see your Ford Dealer for more information) (late availability)	○	○	○	○	○
Heavy-Duty Payload Package - Increases GVWR to 8200 lbs. for improved payload and towing; LT245/70R17D all-terrain BSW tires; 17" 7-lug steel wheels; heavy-duty shock absorbers, frame and 72-amp.-hr. battery; upgraded springs and radiator; auxiliary transmission oil cooler; 5300-lb. rear axle with 10.25" gear set and 4.10 axle (Regular Cab and SuperCab only; requires 5.4L engine) (late availability)	○	○	○	○	○
Deluxe Heated Seats Package - Includes heated driver's and right-front-passenger seats, power passenger seat, memory driver's seat, and memory brake and accelerator pedals (requires power-adjustable pedals)	○	○	○	○	○
Deluxe Mirror Package - Includes power, heated sideview mirrors with exterior mirror-mounted turn-signal indicators and auto-dimming rearview and driver's-side mirror (n/a with King Ranch Package)	○	○	○	○	○

	XL	STX	XLT	FX4	LARIAT
PACKAGES (continued)					
Ford Harley-Davidson™ F-150 Package - Includes 22" polished forged-aluminum wheels; P275/45R22 all-season BSW tires; chrome, billet-style grille with body-color surround; blacked-out headlamps; smoked taillamps; sport-tuned shocks; ground effects; rubber bed mat with HARLEY-DAVIDSON Bar & Shield logo; "Harley-Davidson F-150" badges; black leather-trimmed front captain's chairs with HARLEY-DAVIDSON Bar & Shield logo badges; memory driver's seat; flow-through console and floor shifter with black leather-trimmed lid and shifter knob; power-adjustable performance pedals with memory; high-gloss black instrument panel with unique cluster and serialization badging; Overhead Rail Storage System; box-side graphics with "Harley-Davidson" script; chrome-steel cargo box tie-downs; tuned exhaust with dual chrome pipe outlet; 3.73 limited-slip axle; unique ignition keys with Ford/Harley-Davidson logo on key ends; and more (available as a SuperCrew with 4x2 or All-Wheel Drive)	○	○	○	○	○
King Ranch® Package - Includes Castaño leather-trimmed front captain's chairs with power, heated front seats, memory driver's seat; front flow-through console with Castaño leather-trimmed lid and floor shifter; Castaño leather-trimmed 60/40 split fold-up rear bench with folding armrest; 18" 7-spoke cast-aluminum wheels; unique King Ranch logo wheel ornaments; color-coordinated box top and tailgate moldings; platform running boards and H-bar grille with chrome surround; power-folding sideview mirrors with puddle lamps; body-color mirror skullcaps, door handles and bezels; unique King Ranch badges; unique King Ranch floor mats; woodgrain-style trim; Overhead Rail Storage System; and more (SuperCrew only)	○	○	○	○	○
LARIAT Chrome Package - Includes chrome billet-style grille; 18" chrome-clad aluminum wheels; P265/60R18 all-season OWL tires (4x2), P275/65R18 all-terrain OWL tires (4x4); 5" chrome tubular step bars; chrome exhaust tip; chrome mirror skullcaps; and exterior chrome handle straps (n/a on Harley-Davidson™ Package or King Ranch Package; n/a with two-tone paint; n/a with 20" wheels)	○	○	○	○	○
FX4 Luxury Package - Includes Electronic Automatic Temperature Control; steering wheel with secondary audio and climate controls; power front-passenger seat; heated front seats; memory driver's seat; power-adjustable pedals with memory; Deluxe Mirror Package; body-color H-bar grille and door handles; headlamps with medium platinum bezel (SuperCab and SuperCrew only; requires Black leather-trimmed captain's chairs and power driver's seat) (late availability)	○	○	○	○	○
FX2 SPORT Package - Includes dark-accent billet-style grille with body-color surround; body-color bumpers and lower valance; body-color door and tailgate handles; unique 18" machined-aluminum wheels with painted accents; P265/60R18 all-season OWL tires; chrome exhaust tip; headlamps with medium platinum bezel; fog lamps; "FX2 SPORT" decal; Deluxe Mirror Package with body-color skullcaps; unique cluster/center stack finish and ebony interior accents; leather-trimmed steering wheel; Black/Red sport cloth front captain's chairs with manual lumbar and power driver's seat; flow-through console and floor shifter; unique carpeted floor mats; and more (4x2 SuperCab or SuperCrew with Styleside box only)	○	○	○	○	○
XLT Chrome Package - Includes chrome H-bar grille and surround; 18" chrome-clad aluminum wheels, P265/60R18 all-season OWL tires (4x2), P275/65R18 all-terrain OWL tires (4x4), 5" chrome tubular step bars, chrome exhaust tip, color-coordinated leather-wrapped steering wheel (n/a on Regular Cab or Heavy-Duty Payload Package) (late availability)	○	○	○	○	○
Rear-Seat DVD Entertainment System - Includes DVD player, 8" flip-down LCD screen, rear-seat audio controls, handheld remote control, 2 wireless headphones and audio/video jacks for games or other electronic equipment (SuperCrew only; other restrictions apply)	○	○	○	○	○
FACTORY-INVOCED/DEALER-INSTALLED ACCESSORIES					
Chrome bug shield	○	○	○	○	○
Chrome slip-on exhaust tip	○	○	○	○	○
Convenience Package for Overhead Rail Storage System - Includes 2 large storage bins, CD/DVD case and first-aid kit (SuperCab and SuperCrew only)	○	○	○	○	○
SportLiner™ - Marine-grade carpeted bedliner	○	○	○	○	○

SPECIFICATIONS

PAYLOAD PACKAGES

REGULAR CAB 4x2 STYLESIDE			
WHEELBASE (IN.)	ENGINE	MAX. PAYLOAD (LBS.)	GVWR (LBS.)
126	4.2L	1890	6500
	4.6L	1960	6650
	5.4L	1820	6650
144.5	4.2L	1910	6650
	4.6L	1970	6800
	5.4L	2070	7050
	5.4L	3050	8200*

SUPERCAB 4x2 STYLESIDE			
WHEELBASE (IN.)	ENGINE	MAX. PAYLOAD (LBS.)	GVWR (LBS.)
133	4.6L	1680	6650
	5.4L	1790	6950
144.5	4.6L	1650	6700
	5.4L	1870	7050
163	5.4L	2700	8200*

SUPERCREW FORD HARLEY-DAVIDSON™ 4x2 STYLESIDE			
WHEELBASE (IN.)	ENGINE	MAX. PAYLOAD (LBS.)	GVWR (LBS.)
139	5.4L	1050	6550

SUPERCREW 4x2 STYLESIDE			
WHEELBASE (IN.)	ENGINE	MAX. PAYLOAD (LBS.)	GVWR (LBS.)
139	4.6L	1650	6800
	5.4L	1770	7050
150.5	4.6L	1540	6800
	5.4L	1660	7050

REGULAR CAB 4x4 STYLESIDE			
WHEELBASE (IN.)	ENGINE	MAX. PAYLOAD (LBS.)	GVWR (LBS.)
126	4.6L	1810	6800
	5.4L	1710	6850
144.5	4.6L	1830	6950
	5.4L	1670	6950
	5.4L	2700	8200*

SUPERCAB 4x4 STYLESIDE			
WHEELBASE (IN.)	ENGINE	MAX. PAYLOAD (LBS.)	GVWR (LBS.)
133	4.6L	1640	6900
	5.4L	1680	7150
144.5	4.6L	1600	6950
	5.4L	1730	7200
163	5.4L	2350	8200*

SUPERCREW FORD HARLEY-DAVIDSON™ AWD STYLESIDE			
WHEELBASE (IN.)	ENGINE	MAX. PAYLOAD (LBS.)	GVWR (LBS.)
139	5.4L	990	6750

SUPERCREW 4x4 STYLESIDE			
WHEELBASE (IN.)	ENGINE	MAX. PAYLOAD (LBS.)	GVWR (LBS.)
139	4.6L	1450	6900
	5.4L	1630	7200
150.5	4.6L	1340	6900
	5.4L	1520	7200

REGULAR CAB 4x2 FLARESIDE			
WHEELBASE (IN.)	ENGINE	MAX. PAYLOAD (LBS.)	GVWR (LBS.)
126	4.2L	1870	6500
	4.6L	1940	6650
	5.4L	1780	6650

SUPERCAB 4x2 FLARESIDE			
WHEELBASE (IN.)	ENGINE	MAX. PAYLOAD (LBS.)	GVWR (LBS.)
144.5	4.6L	1630	6700
	5.4L	1850	7050

SUPERCREW 4x2 FLARESIDE			
WHEELBASE (IN.)	ENGINE	MAX. PAYLOAD (LBS.)	GVWR (LBS.)
150.5	4.6L	1520	6800
	5.4L	1640	7050

REGULAR CAB 4x4 FLARESIDE			
WHEELBASE (IN.)	ENGINE	MAX. PAYLOAD (LBS.)	GVWR (LBS.)
126	4.6L	1790	6800
	5.4L	1690	6850

SUPERCAB 4x4 FLARESIDE			
WHEELBASE (IN.)	ENGINE	MAX. PAYLOAD (LBS.)	GVWR (LBS.)
144.5	4.6L	1580	6950
	5.4L	1710	7200

SUPERCREW 4x4 FLARESIDE			
WHEELBASE (IN.)	ENGINE	MAX. PAYLOAD (LBS.)	GVWR (LBS.)
150.5	4.6L	1280	6900
	5.4L	1480	7200

Note: All figures are subject to change.

MAXIMUM PAYLOAD

REGULAR CAB STYLESIDE 4x2 – 3050 lbs.*
 REGULAR CAB FLARESIDE 4x2 – 1940 lbs.
 SUPERCAB STYLESIDE 4x2 – 2700 lbs.*
 SUPERCAB FLARESIDE 4x2 – 1850 lbs.
 SUPERCREW STYLESIDE 4x2 – 1770 lbs.
 SUPERCREW FLARESIDE 4x2 – 1640 lbs.

MAXIMUM TOWING

SUPERCREW 4x2 – 9500 lbs.
 SUPERCREW 4x4 – 9200 lbs.
 SUPERCAB 4x2 – 9500 lbs.*
 SUPERCAB 4x4 – 9300 lbs.*
 REGULAR CAB 4x2 – 10,500 lbs.*
 REGULAR CAB 4x4 – 9500 lbs.*

*Requires Heavy-Duty Payload Package (late availability).

WHEELS



17" Grey Styled-Steel (XL)



17" Machined-Aluminum (STX – available)



17" Chrome-Clad Steel (XLT – standard; STX – standard)



17" Machined-Aluminum with Painted Accents (XLT – available)



18" Machined-Aluminum (FX2 SPORT Package)



18" Machined Cast-Aluminum (FX4)



18" Bright-Aluminum (LARIAT)



18" Chrome-Clad Aluminum (LARIAT and XLT Chrome Packages)



18" 7-Spoke Cast-Aluminum (King Ranch*)



20" 6-Spoke Machined-Aluminum (FX2, FX4, LARIAT, King Ranch – available)



22" Polished Forged-Aluminum (Harley-Davidson™ Package)



17" 7-Lug Grey Steel (Heavy-Duty Payload Package)

ENGINES



ENGINE	TRANSMISSION	HORSEPOWER (HP @ RPM)	TORQUE (LB.-FT. @ RPM)	2006 EPA-ESTIMATED FUEL ECONOMY**			
				4x2		4x4	
				CITY	HWY.	CITY	HWY.
4.2L EFI V6	5-speed man. O/D	202 @ 4350	260 @ 3750	15 mpg	20 mpg	—	—
	4-speed auto. O/D	202 @ 4350	260 @ 3750	16 mpg	20 mpg	—	—
4.6L Triton® V8	4-speed auto. O/D	248 @ 4750	294 @ 4000	15 mpg	19 mpg	14 mpg	18 mpg
5.4L 3-Valve Triton V8	4-speed auto. O/D	300 @ 5000	365 @ 3750	14 mpg	19 mpg	14 mpg	18 mpg

**Actual mileage may vary with driving habits. 5.4L 3-Valve Triton V8 4-speed auto. O/D AWD 14 mpg city/18 hwy.

AXLE AVAILABILITY

CAB	ENGINE	SERIES/PKG.	DRIVETRAIN	TIRES	NON-LIMITED-SLIP REAR AXLE				LIMITED-SLIP REAR AXLE		
					3.31	3.55	3.73	4.10	3.55	3.73	4.10
Regular Cab or SuperCab	4.6L	XL, XLT	4x2	P235/70R17 A/S BSW	—	●	○	—	○	○	—
Regular Cab or SuperCab	5.4L	XL, XLT	4x2	P235/70R17 A/S BSW	—	●	○	—	○	○	—
Regular Cab or SuperCab	Any	XL, XLT	4x4	P235/75R17 A/T BSW	—	●	○	—	○	○	—
Regular Cab	4.2L†	XL, XLT	4x2	P235/70R17 A/S BSW	●	○	●	—	○	●	—
All	4.6L	XL, STX, XLT	4x2	P255/65R17 A/S OWL	—	●	○	—	○	○	—
All	5.4L	XL, XLT	4x2	P255/65R17 A/S OWL	—	●	○	—	○	○	—
All	4.6L	XL, STX, XLT	4x4	P255/70R17 A/T OWL	—	●	●	—	●	○	—
All	5.4L	XL, XLT	4x4	P255/70R17 A/T OWL	—	●	○	—	○	○	—
Regular Cab	4.2L†	XL, XLT	4x2	P255/65R17 A/S OWL	●	○	●	—	○	●	—
Regular Cab	4.2L	STX	4x2	P255/65R17 A/S OWL	—	●	●	—	—	●	—
SuperCab or SuperCrew††	5.4L	XLT, LARIAT	4x2	P265/60R18 A/S OWL	—	●	○	—	○	○	—
SuperCab or SuperCrew†	4.6L	XLT	4x2	P265/60R18 A/S OWL	—	●	○	—	○	○	—
SuperCab or SuperCrew††	4.6L	XLT	4x4	P275/65R18 A/T OWL	—	—	●	—	—	○	—
SuperCab or SuperCrew††	5.4L	XLT	4x4	P275/65R18 A/T OWL	—	●	○	—	○	○	—
All	5.4L	FX4	4x4	P275/65R18 A/T OWL	—	—	—	—	—	●	—
SuperCab or SuperCrew	5.4L	XLT, LARIAT	4x4	P275/65R18 A/T OWL	—	—	●	—	—	○	—
SuperCab or SuperCrew†	4.6L/5.4L	XLT	4x2	P275/55R20 A/T OWL	—	●	○	—	○	○	—
SuperCab or SuperCrew	5.4L	FX4	4x4	P275/55R20 A/T OWL	—	—	—	—	●	○	—
SuperCab or SuperCrew†	5.4L	LARIAT	4x2/4x4	P275/55R20 A/T OWL	—	—	●	—	○	○	—
SuperCab*†	5.4L	LARIAT	4x2/4x4	P275/45R22 A/S BSW V-Rated for H-D	—	—	—	—	—	●	—
Regular Cab or SuperCab	5.4L	Payload Pkg.	4x2/4x4	LT245/70R17D A/T BSW	—	—	—	●	—	—	○
Regular Cab or SuperCab**	4.6L/5.4L	XL, XLT	4x2/4x4	LT245/70R17D A/T BSW	—	●	○	—	○	○	—
All	5.4L	FX4	4x4	LT275/65R18C A/T OWL	—	—	—	—	—	●	—
SuperCab or SuperCrew	5.4L	LARIAT	4x4	LT275/65R18C A/T OWL	—	—	●	—	—	○	—

● Standard ○ Select Availability ○ Optional — Not Available

†3.55 axle or higher required with automatic transmission. ††Available on XLT only with XLT Chrome Package or FX2 SPORT Package. †XLT Chrome Package or FX2 SPORT Package only. ††XLT Chrome Package only. †FX2 SPORT Package only. ††Optional with King Ranch Package (3.55 axle n/a with King Ranch). *Harley-Davidson™ Package only. **Fleet only.

CONVENTIONAL TOWING^ – Maximum Loaded Trailer Weight Ratings (lbs.)

ENGINE	AXLE RATIO	MAX. GCWR (LBS.)	REGULAR CAB 4x2		REGULAR CAB 4x4		SUPERCAB 4x2			SUPERCAB 4x4			SUPERCREW 4x2		SUPERCREW 4x4/AWD†	
			126.0" WB	144.5" WB	126.0" WB	144.5" WB	132.5" WB	144.5" WB	163.0" WB	132.5" WB	144.5" WB	163.0" WB	138.5" WB	150.5" WB	138.5" WB	150.5" WB
4.2L EFI V6	3.31	7200	2400	2300	—	—	—	—	—	—	—	—	—	—	—	—
	3.55	8500	3700	3600	—	—	—	—	—	—	—	—	—	—	—	—
4.2L EFI V6 Automatic	3.55	10,000	5100	5000	—	—	—	—	—	—	—	—	—	—	—	—
	3.73	10,500	5600	5500	—	—	—	—	—	—	—	—	—	—	—	—
4.6L Triton V8 Automatic	3.55	11,500	6600	—	6300	—	6300	—	—	6000	—	—	—	—	—	—
		11,700	—	6700	—	6400	—	6500	—	6200	—	6400	6200	—	—	—
	3.73	12,000	7100	—	6800	—	6800	—	6500	—	—	—	—	—	—	—
5.4L 3-Valve Triton V8 Automatic	3.55	13,000	8000	—	7700	—	7600	—	—	7300	—	—	—	—	—	—
		14,000	—	8800	—	8500	—	8600	—	8300	—	8500	8400	8200	8100	—
	3.73	13,500	8500	—	8200	—	8100	—	7800	—	—	—	—	—	—	—
		11,000*	—	—	—	—	—	—	—	—	—	—	5300	—	5100	—
	4.10	15,300	—	—	—	9500*	—	—	9500*	—	—	9300*	—	—	—	—
		15,800	—	10,500*	—	—	—	—	—	—	—	—	—	—	—	—

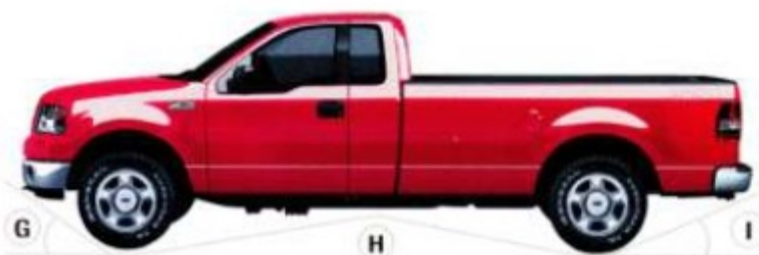
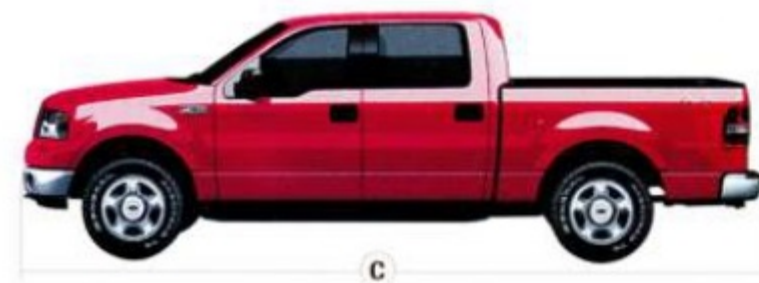
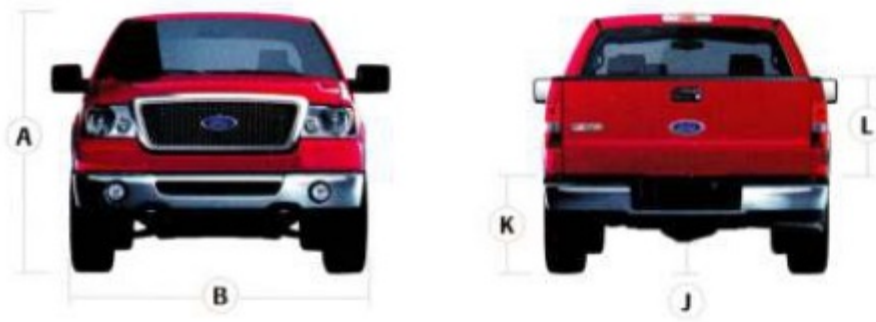
^Reduce GCWR/maximum trailer weight by 500 lbs. on models with optional 18" or 20" wheels. *Ford Harley-Davidson™ Package only.

Note: Maximum loaded trailer weights shown. The combined weight of the towing vehicle (including hitch, passengers and cargo) and the loaded trailer must not exceed the Gross Combination Weight Rating (GCWR).

Note: See RV and Trailer Towing Guide for requirements, restrictions and 5th-wheel towing.

SPECIFICATIONS

DIMENSIONS



EXTERIOR

	REGULAR CAB 4x2/4x4 STYLESIDE	SUPERCAB 4x2/4x4 STYLESIDE	SUPERCREW 4x2/4x4 STYLESIDE
A Overall height			
5.5' box	—	74.0"/76.5"	73.5"/76.0"
6.5' box	73.7"/75.6"	73.5"/75.6"	73.5"/76.0"
8' box	73.8"/75.6"	73.4"/75.4"	—
B Overall width (excl. mirrors)	78.9"	78.9"	78.9"
C Overall length			
5.5' box	—	217.8"	223.8"
6.5' box	211.2"	229.8"	235.8"
8' box	229.8"	248.4"	—
D Overhang – Front	36.9"	36.9"	36.9"
E Wheelbase			
5.5' box	—	132.5"	138.5"
6.5' box	126.0"	144.5"	150.5"
8' box	144.5"	163.0"	—
F Overhang – Rear	48.4"	48.4"	48.4"
G Angle of approach (SWB)	19.5°/24.0°	20.5°/27.0°	19.5°/25.0°
H Ramp breakover angle (SWB)	20.1°/22.0°	18.9°/21.1°	17.7°/21.2°
I Angle of departure (SWB)	23.3°/26.0°	23.1°/25.4°	22.4°/25.2°
J Ground clearance (rear axle)	8.3"/8.7"	8.3"/8.6"	8.2"/8.1"
K Loadfloor height (open tailgate to ground, empty)			
5.5' box	—	33.0"/35.1"	32.4"/34.8"
6.5' box	33.1"/35.6"	32.6"/34.9"	32.4"/34.8"
8' box	33.5"/35.9"	33.5"/35.4"	—
L Cargo box height with moldings	22.3"	22.3"	22.3"
M Cab length	124.9"	143.5"	149.3"

INTERIOR

	REGULAR CAB 4x2/4x4 STYLESIDE	SUPERCAB 4x2/4x4 STYLESIDE	SUPERCREW 4x2/4x4 STYLESIDE
1st Row			
Head room	40.9"	40.9"	40.1"
Shoulder room	66.5"	66.5"	65.8"
Hip room	65.4"	65.8"	63.8"
Leg room	41.3"	41.3"	41.3"
2nd Row			
Head room	—	39.6"	39.6"
Shoulder room	—	66.7"	65.8"
Hip room	—	66.5"	63.1"
Leg room	—	32.7"	39.0"

SWB = Short Wheelbase

CARGO AREA

	5.5' STYLESIDE BOX	6.5' STYLESIDE BOX	6.5' FLARESIDE BOX	8' STYLESIDE BOX
Volume (cu. ft.)	55.5	65.5	59.1	81.3
N Length at floor	67.0"	78.8"	78.8"	97.4"
O Width at wheelhouse	50.0"	50.0"	50.0"	50.0"
P Maximum width inside box	65.2"	65.2"	59.3"	65.2"

ACCESSORIES

POWER UP WITH GENUINE FORD ACCESSORIES



fordaccessoriesstore.com

To make driving your new F-150 even more satisfying, personalize it with Genuine Ford Accessories. Engineered by Ford for excellent fit and durability, Genuine Ford Accessories take comfort, convenience and style to the next level. Get precise, professional installation from your Ford Dealer when you buy or lease your new F-150, backed with a 3-year/36,000-mile limited warranty.* And now, Ford's new vehicle Accessorizer puts personalization in the fast lane. This exciting new online tool lets you see how Genuine Ford Accessories will look on your truck. Take it for a test drive at www.fordvehicles.com.

*12-month/12,000-mile limited warranty if Genuine Ford Accessories are not installed by a Ford Dealer or are purchased after initial vehicle sale. See your dealer for details.



Chrome Bug Shield

Bedliner

Molded Splash Guards

Chrome Trailer Tow Mirrors

20" Polished Forged-Aluminum Wheels

ELECTROCHROMIC MIRROR WITH HOMELINK®

CHROME BUG SHIELD

SOFT TONNEAU COVER

STEP BARS

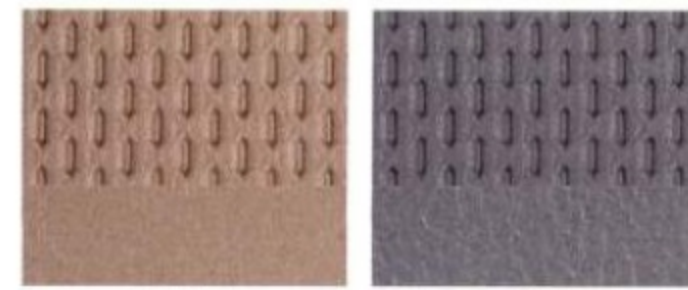


20" POLISHED FORGED-ALUMINUM WHEELS

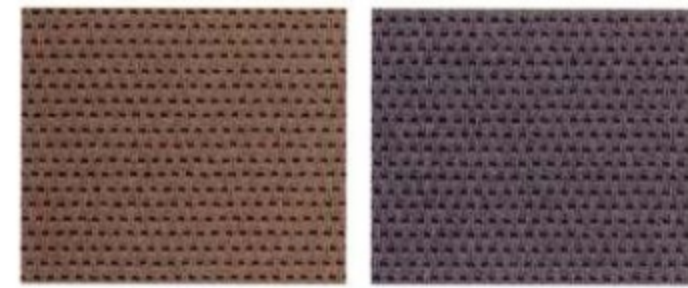
www.fordvehicles.com

SPECIFICATIONS

INTERIORS



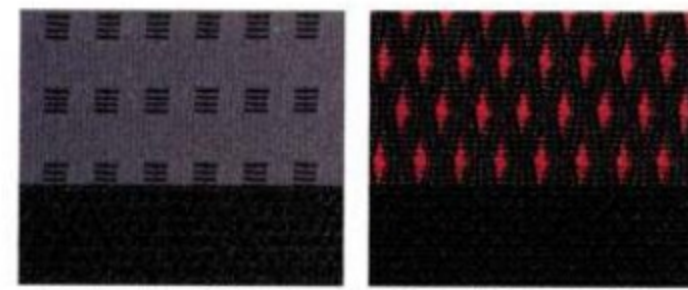
Tan Vinyl Medium Flint Vinyl



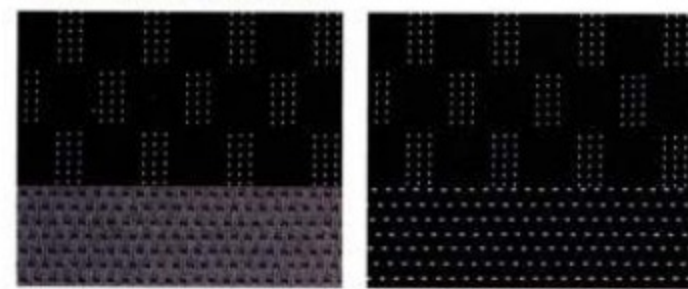
Tan Cloth Medium Flint Cloth



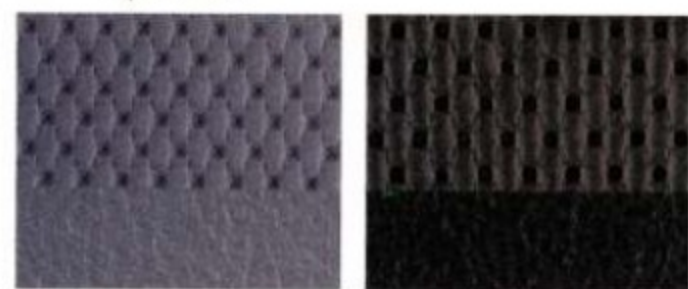
Tan Premium Cloth Medium Flint Premium Cloth



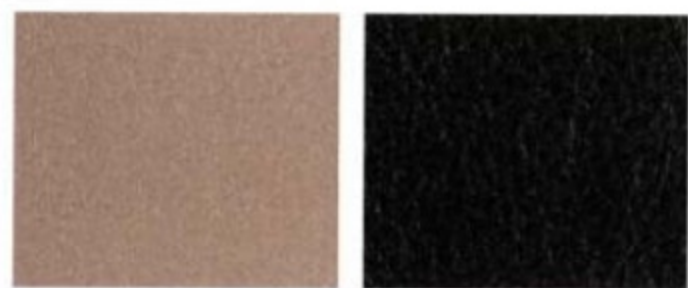
Medium Flint/Dark Flint Two-Tone Premium Cloth Black/Red Sport Cloth



Black/Medium Flint Sport Cloth Black Sport Cloth



Medium Flint Sport Leather Black Sport Leather



Tan Leather Black Leather



Full-Grain Black Leather Castaño Leather

- TAN
- MEDIUM FLINT
- MEDIUM FLINT/DARK FLINT TWO-TONE
- BLACK

XL

- Oxford White
- Pueblo Gold Metallic*
- Bright Red
- Redfire Metallic*
- Forest Green Metallic*
- Dark Blue Pearl Metallic*
- Silver Metallic
- Dark Shadow Grey Metallic
- Black

STX

- Oxford White
- Bright Red
- Dark Blue Pearl Metallic*
- Silver Metallic
- Dark Shadow Grey Metallic
- Black

XLT

- Oxford White
- Oxford White/Pueblo Gold Metallic*
- Pueblo Gold Metallic*
- Bright Red
- Bright Red/Pueblo Gold Metallic*
- Bright Red/Silver Metallic
- Redfire Metallic*
- Redfire Metallic/Pueblo Gold Metallic*
- Redfire Metallic/Silver Metallic*
- Forest Green Metallic*
- Forest Green Metallic/Pueblo Gold Metallic*
- Forest Green Metallic/Silver Metallic*
- Dark Blue Pearl Metallic*
- Dark Blue Pearl Metallic/Silver Metallic*
- Silver Metallic
- Dark Shadow Grey Metallic
- Dark Shadow Grey Metallic/Silver Metallic
- Dark Stone Metallic
- Dark Stone Metallic/Pueblo Gold Metallic*
- Black
- Black/Pueblo Gold Metallic*
- Black/Silver Metallic

FX2 SPORT PACKAGE

- Oxford White
- Bright Red
- Redfire Metallic*
- Dark Shadow Grey Metallic
- Black

*New for 2007.

- TAN
- MEDIUM FLINT
- MEDIUM FLINT/DARK FLINT TWO-TONE
- BLACK

BLACK/MEDIUM FLINT

FX4

- Oxford White
- Oxford White/Dark Shadow Grey Metallic
- Bright Red
- Bright Red/Dark Shadow Grey Metallic
- Dark Blue Pearl Metallic*
- Dark Blue Pearl Metallic/Dark Shadow Grey Metallic*
- Silver Metallic
- Silver Metallic/Dark Shadow Grey Metallic
- Dark Shadow Grey Metallic
- Black
- Black/Dark Shadow Grey Metallic

LARIAT

- Oxford White
- Oxford White/Pueblo Gold Metallic*
- Bright Red/Pueblo Gold Metallic*
- Redfire Metallic*
- Redfire Metallic/Pueblo Gold Metallic*
- Forest Green Metallic*
- Forest Green Metallic/Pueblo Gold Metallic*
- Dark Blue Pearl Metallic/Pueblo Gold Metallic*
- Dark Stone Metallic
- Dark Stone Metallic/Pueblo Gold Metallic*
- Black
- Black/Pueblo Gold Metallic*
- White Sand Tri-Coat Metallic*

KING RANCH*

- Oxford White/Pueblo Gold Metallic*
- Forest Green Metallic/Pueblo Gold Metallic*
- Dark Stone Metallic/Pueblo Gold Metallic*
- Dark Copper Metallic/Pueblo Gold Metallic*
- Black/Pueblo Gold Metallic*

FORD HARLEY-DAVIDSON™

- Black
- Dark Amethyst Metallic*

EXTERIORS



Oxford White



Pueblo Gold Metallic



Bright Red



Redfire Metallic



Forest Green Metallic



Dark Blue Pearl Metallic



Silver Metallic



Dark Shadow Grey Metallic



Dark Stone Metallic



Black



Dark Copper Metallic**



White Sand Tri-Coat Metallic†



Dark Amethyst Metallic††

Ford uses clearcoat paint for beauty and protection. Colors shown are representative only. Not all colors are available on all models. See your dealer for actual paint/trim options. Vehicles shown with optional equipment. F-150 XLT SuperCrew 4x4 shown. **King Ranch only. †LARIAT only. ††Harley-Davidson™ Package only.

New Vehicle Limited Warranty

We want your Ford F-150 ownership experience to be the best it can be. So under this warranty, your new vehicle comes with 3-year/36,000-mile Bumper-to-Bumper Coverage, 5-year/50,000-mile Safety Restraint Coverage, and 5-year/unlimited-mile Corrosion (Perforation) Coverage — all with no deductible. Please ask your Ford Dealer for a copy of this limited warranty.



Get the ride you want. Whether you plan to lease or finance, you'll find the choices that are right for you at Ford Credit. Ask your Ford Dealer for details, or check us out at www.fordcredit.com.



Get Ford Motor Company quality in your auto insurance. Our program offers industry-leading benefits and competitive rates. Call 1-877-367-3847, or visit us at www.fordvip.com for a no-obligation quote. Insurance offered by American Road Services Company (in CA, American Road Insurance Agency), a licensed agency and subsidiary of Ford Motor Company.



For a purchase or lease, the Ford Extended Service Plan (ESP) gives you "Peace-of-Mind" protection designed to cover key vehicle components and protect you from the cost of unexpected repairs. Ask your dealer for an ESP, the only service contract backed exclusively by Ford and honored at all Ford Lincoln Mercury dealerships.

Nailed

hangers to the ledger
as my buddies unloaded the stringers.
A house without a deck is like
a driveway without my truck.
Just another project for
Built Ford Tough.



BOLD MOVES