

2007

# MERCURY MARINER



MERCURY | NEW DOORS OPENED

MOHAWK wind power  This brochure is printed on Green Seal-certified paper that is manufactured with non-polluting, wind-generated energy.





**3.0L DURATEC 30 V-6 ENGINE\***  
 DELIVERS A FULL 200 HP  
 193 LB.-FT. OF TORQUE  
 CAN TOW UP TO 3500 LBS.\*\*

**2.3L DURATEC 23 I-4 ENGINE**  
 GIVES YOU 153 HP  
 152 LB.-FT. OF TORQUE  
 EPA-ESTIMATED 23 MPG CITY/26 HWY. (FWD MODEL)

2

\*Available feature. \*\*When properly equipped with Class II Trailer Tow Package.

## YOU'VE ALWAYS STOOD OUT. THE EYE-CATCHING MERCURY MARINER KNOWS JUST HOW YOU FEEL.

With its ideal proportions, sophisticated satin-aluminum accents and great road presence, the 2007 Mercury Mariner makes other small SUVs look positively dull in comparison. But those standout looks are just one reason that Mariner has caught your eye. Power rack-and-pinion steering and an Anti-lock Brake System (ABS) provide precise control, while a 4-wheel, fully independent suspension and available V-6 engine give Mariner the flexibility to excel in the curves and corners. **Exhilarating acceleration and agile performance** are simply the icing on the cake.

Underneath Mariner's gleaming exterior, its **4-wheel, fully independent suspension** provides the agility to execute a sudden on-road maneuver, as well as the flexibility to drive off-road. Since each wheel can react separately, it delivers remarkably precise handling. Up front, MacPherson struts and a stabilizer bar system with low-friction links work together with its solid unibody construction to help deliver a consistently smooth, solid ride.



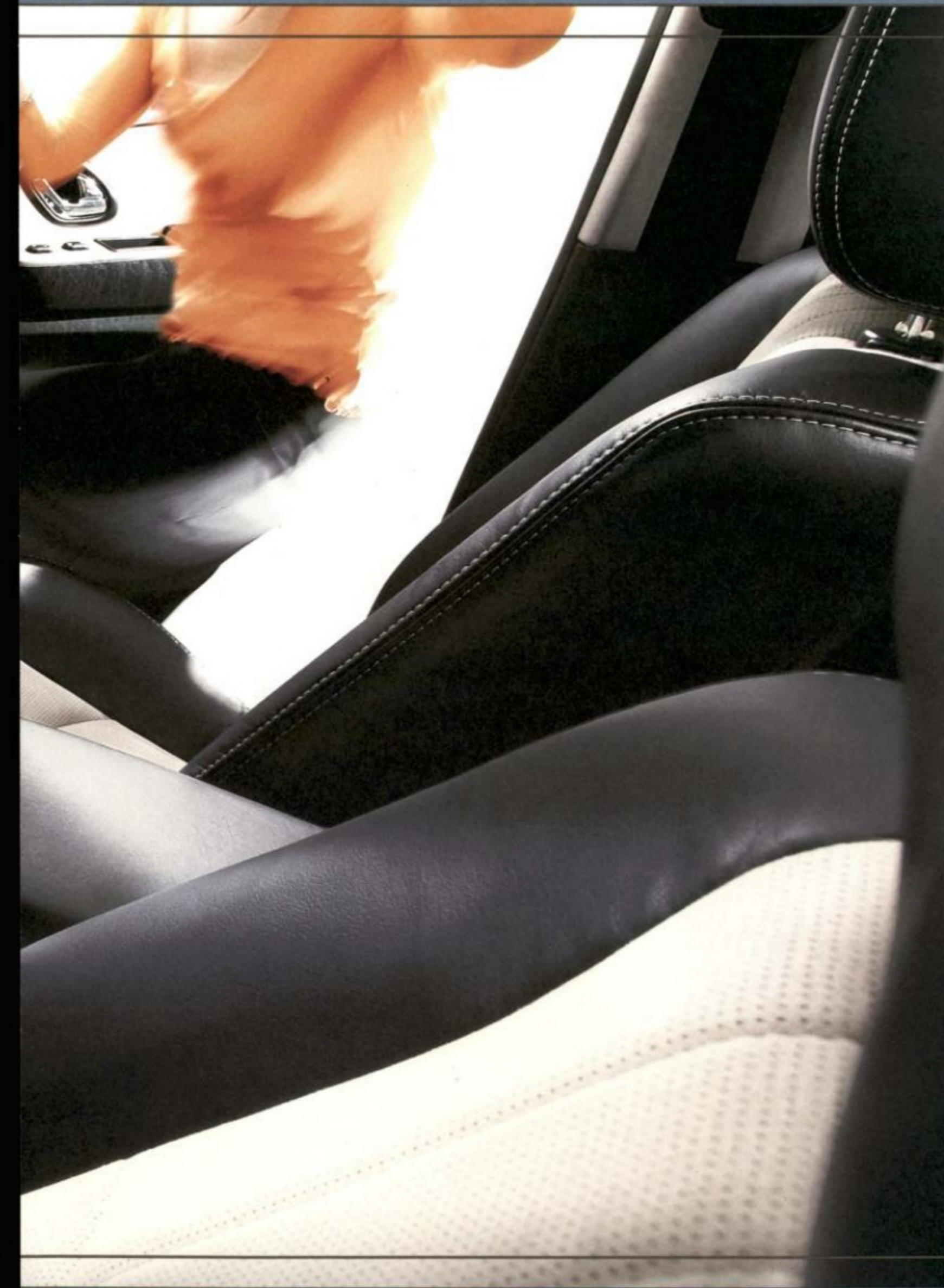
3

BLACK: MARINER PREMIER





4 BLACK LEATHER TRIM/LIGHT PARCHMENT PREFERRED SUEDE\* INSERTS; MARINER PREMIER



**CREATE A STIR.** KNOWING HOW COLORS WORK TOGETHER IS PART OF BEING SAVVY, AND MARINER'S GOT YOU COVERED. TAKE THE STRIKING TWO-TONE OF LIGHT PARCHMENT INSERTS OFFSET BY BLACK LEATHER-TRIMMED SEATS.\* THERE'S NOTHING ELSE LIKE IT IN ITS CLASS.

Pebble leather with Light Parchment Preferred Suede\* inserts\* is available if subtlety is more your style. On Mariner Luxury and Premier, Black leather-trimmed seating with contrasting Flint stitching is an additional option. And through the artful use of carefully selected materials, Mariner's sophisticated interior styling is further elevated. On the door handles and gear-shift surround, a distinctive chrome finish adds a bit of flash, while the flow-through center console and instrument panel are gracefully accented by a satin-aluminum finish and elegant Sapele woodgrain.

5 \*Included on Mariner Premier.





6

BLACK LEATHER TRIM/LIGHT PARCHMENT PREFERRED SUEDE® INSERTS: MARINER PREMIER



**AVAILABLE MOON & TUNE PACKAGE**  
 POWER MOONROOF WITH SUNSHADE  
 6-DISC IN-DASH CD CHANGER WITH 4 SPEAKERS, AND MP3  
 AND SIRIUS SATELLITE RADIO\* CAPABILITIES  
 ROOF-RACK SIDE RAILS WITH CROSSBARS

**AVAILABLE 320-WATT AUDIOPHILE® SOUND SYSTEM**  
 6-DISC IN-DASH CD CHANGER  
 7 STRATEGICALLY PLACED SPEAKERS, INCLUDING AN 8" SUBWOOFER  
 MP3 AND SIRIUS SATELLITE RADIO\* CAPABILITIES

**SIRIUS**  
 SATELLITE RADIO



Sumptuous surfaces are only the beginning of Mariner's pampering ways. Its **long list of standards** includes: power sideview mirrors, windows and door locks; a remote keyless-entry system with 2 key fobs; a driver's-side keyless-entry keypad, and our innovative Personal Safety System.® A luxurious leather-wrapped steering wheel, with tilt column and cruise control, is standard as well.

Now that music comes in many formats, Mariner is fully equipped to respond. All audio systems, from the standard AM/FM stereo/single-CD player to the available 6-disc in-dash CD changer, are MP3- and SIRIUS Satellite Radio\*-capable. In the 2007 Mariner, it's always your choice.

\*See your Lincoln Mercury Dealer or contact SIRIUS at 1-888-539-7474 for more information.

7



**STYLED FOR LIFE. YOURS.** ALONG WITH A HEALTHY DOSE OF DRAMA, MERCURY MARINER HAS ALL THE PEOPLE-CARRYING, CARGO-HAULING VERSATILITY YOU REQUIRE FROM YOUR SUV.



- 1 60/40 SPLIT-FOLDING REAR SEAT
- 2 CARGO AREA STORAGE POCKET
- 3 POWER MOONROOF\*
- 4 66.3 CU. FT. OF CARGO SPACE BEHIND 1ST ROW WITH CUSHIONS REMOVED
- 5 PEBBLE CLOTH WITH LIGHT PARCHMENT INSERTS  
BLACK LEATHER TRIM WITH LIGHT PARCHMENT PREFERRED SUEDE® INSERTS\*  
PEBBLE LEATHER TRIM WITH LIGHT PARCHMENT PREFERRED SUEDE INSERTS\*  
BLACK LEATHER TRIM WITH BLACK PERFORATED LEATHER INSERTS\*
- 6 29.3 CU. FT. OF CARGO SPACE BEHIND 2ND ROW
- 7 REVERSE SENSING SYSTEM\*
- 8 FRONT DOOR POCKETS
- 9 MESSAGE CENTER WITH COMPASS\*
- 10 HEATED FRONT SEATS\*
- 11 HIGHLY CONFIGURABLE



5



6



7



8



9



10



11

Sometimes you want to be surrounded by friends. At other times, your dog and an undiscovered stretch of road are all the company you need. Mercury Mariner understands – completely.

A unique blend of **stylish sophistication and savvy versatility**, Mariner seats up to 5 in complete comfort. And on models equipped with available leather-trimmed seats, front-seat passengers get the added bonus of heated seats and heated sideview mirrors.

With the 60/40 split rear seat folded down to form a smooth load surface, Mariner's full 62.8 cu. ft. of cargo space will make your next trip to the farmers market a rousing success. And for those times when you need even more cargo room (66.3 cu. ft.), the **rear seat cushions can be removed altogether**.

Mariner's rear cargo area also includes a storage pocket where you can keep items from rolling around. Both the driver and front-passenger doors feature deep, recessed pockets that are perfect for keeping everyday essentials close at hand.

**AVAILABLE REAR CARGO CONVENIENCE PACKAGE**

- RETRACTABLE CARGO AREA COVER
- INTERIOR CARGO MANAGEMENT SYSTEM

**AVAILABLE COMFORT PACKAGE**

- AUTOMATIC HEADLAMPS
- ILLUMINATED VISOR VANITY MIRRORS
- AUTO-DIMMING REARVIEW MIRROR
- OVERHEAD CONSOLE WITH DUAL STORAGE BINS
- PERIMETER ANTI-THEFT ALARM
- MESSAGE CENTER WITH COMPASS DISPLAY



9





WHEN INTELLIGENT 4WD\* SENSES A LOSS OF TRACTION IN THE FRONT, IT AUTOMATICALLY SENDS POWER TO THE REAR WHEELS.



## SO WELL-DESIGNED, IT DECIDES WHEN TO WORK. MERCURY MARINER'S INTELLIGENT 4WD SYSTEM GIVES YOU CONFIDENT CONTROL.

When equipped with the available Intelligent 4WD System,\* you'll appreciate Mercury Mariner's hard-working nature as soon as the road gets slick. To **maximize traction at all times**, Intelligent 4WD uses a network of sensors and a computer to calculate (at an amazing rate of 5000 times per second) exactly how much torque to send to the rear wheels in order to minimize slip – helping you maintain control.

Intelligent 4WD is also designed to sense when you're making a tight turn on dry pavement so the system can distribute torque appropriately. In fact, it can supply added control even when you're simply rounding a corner. So you get optimum driving enjoyment on those beautiful, blue-sky days too. And since it's cleverly engineered to function in front-wheel drive under normal circumstances, the Intelligent 4WD System helps you achieve **better fuel economy** than if 4WD was always engaged.

So the next time the weather turns unfriendly, you won't be grasping for a switch to activate or a lever to pull – like drivers of some other compact SUVs. You can keep both hands on the wheel while Mariner's Intelligent 4WD delivers seamless, automatic operation and takes care of all the details. As it should be.







**MUCH MORE THAN A PRETTY FACE.**  
 INNOVATIVE SAFETY FEATURES BRING  
 A FEELING OF SERENITY AND SECURITY  
 TO YOUR EVERY DRIVE IN MARINER.

**Personal Safety System** Your safety is of the utmost importance, which is why our Personal Safety System® is standard on every Mariner. This innovative system uses a network of sensors to enhance protection for the driver and front passenger in certain frontal collisions. It customizes the deployment of the dual-stage front airbags based on several criteria: the driver's-seat position; whether a front passenger is present and his/her weight range; whether the front safety belts are in use; and the overall severity of the impact.

**Front-Passenger Sensing System** This plays an important role within the Personal Safety System. After verifying safety belt usage and the amount of pressure exerted on the seat, it determines whether the front-passenger airbag should be activated or not. A message illuminates on the instrument panel to indicate when the airbag has been automatically disabled.

**Dynamic Side-Impact Airbag Package** Now standard on Mariner Premier and available on other models, Mariner's Dynamic Side-Impact Airbag Package includes front-seat side airbags and the Safety Canopy™ System with side-curtain airbags, in addition to the dual-stage front airbags in the standard Personal Safety System. The side-curtain airbags deploy from the headliner on both sides of the vehicle and remain inflated longer to help further protect outboard occupants in both rows. A rollover sensor directs their deployment in the event of a rollover or certain side-impact collisions.





■ CONVENIENCE ■ LUXURY ■ PREMIER □ AVAILABLE ■ INCLUDED IN A PACKAGE

## POWERTRAIN/FUNCTIONALITY

- 2.3L DOHC Duratec 23 I-4 engine
- 3.0L DOHC Duratec 30 V-6 engine
- 4-speed automatic transmission
- 4-wheel Anti-lock Brake System (ABS)
- 4-wheel independent suspension
- 100,000-mile tune-up interval\*
- 16" 15-spoke painted-aluminum wheels
- 16" 15-spoke machined-aluminum wheels
- Front stabilizer bar
- Front-wheel drive
- Intelligent 4WD System
- P235/70R16 all-season BSW tires
- Power 4-wheel disc brakes (4WD models only)
- Power front disc and rear drum brakes

## EXTERIOR

- 2-speed rear windshield wiper with washer/defroster
- Automatic headlamps
- Chrome exhaust tip
- Front fog lamps and side repeater lamps
- Full-size spare wheel/tire (non-matching)
- Liftgate with flip-up glass
- Power sideview mirrors with manual-fold feature
- Power, heated sideview mirrors with manual-fold feature (included with leather-trimmed seating)
- Privacy glass on rear doors, rear quarter windows and liftgate
- Reverse Sensing System
- Roof-rack side rails with crossbars\*\*
- Satin-aluminum grille
- Side step bars (running boards)
- Solar-tinted glass on doors and liftgate
- Variable-intermittent front windshield wipers with washer

## INTERIOR

- Accessory delay for power features
- Adjustable head restraints (5)
- Air conditioning
- AM/FM stereo/single-CD player with MP3 and SIRIUS Satellite Radio capabilities, and clock
- AM/FM stereo/6-disc in-dash CD changer with MP3 and SIRIUS Satellite Radio capabilities, and 4 speakers
- Audiophile® Sound System with AM/FM stereo/6-disc in-dash CD changer with MP3 and SIRIUS Satellite Radio capabilities, 7 speakers and automatic volume control
- Auto-dimming rearview mirror
- Covered visor vanity mirrors

## INTERIOR (continued)

- Floor console with storage bin and 2 cupholders with removable insert
- Leather-wrapped steering wheel with tilt column and cruise control
- Message center with compass display
- Overhead console with dual storage bins†
- Power door locks with child-safety rear door locks
- Power moonroof with sunshade and mini-overhead console††
- Power windows with one-touch-down driver's-side feature
- Premium cloth front bucket seats with 2-way manual driver's seat
- Premium cloth front bucket seats with 6-way power driver's seat
- Premium leather-trimmed, heated front bucket seats with perforated inserts, 6-way power driver's seat and manual lumbar support
- Premium leather-trimmed, heated front bucket seats with Preferred Suede® inserts, 6-way power driver's seat and manual lumbar support
- Rear 60/40 split-folding seat

## SECURITY/SAFETY

- Battery saver
- Belt-Minder® safety belt reminder
- Dynamic Side-Impact Airbag Package with front-seat side airbags and Safety Canopy™ System with side-curtain airbags and rollover sensor
- Lower anchors and tether anchors for child-safety seats (LATCH) on rear outboard seat positions
- Perimeter anti-theft alarm
- Personal Safety System® for driver and front passenger with dual-stage front airbags, safety belt pretensioners, safety belt energy-management retractors, safety belt usage sensors, driver's-seat position sensor, crash severity sensor, restraint control module and Front-Passenger Sensing System
- Remote keyless-entry system with 2 key fobs, driver's door-mounted keypad and illuminated entry system
- Safety belt restraint system with 3-point belts in all seating positions and front height-adjustable shoulder belts
- SecuriLock® passive anti-theft system
- Side-intrusion door beams
- Tire Pressure Monitoring System

## PACKAGES

- Class II Trailer Tow Package with 3500-lb. maximum towing capacity
- Comfort Package – Automatic headlamps, illuminated visor vanity mirrors, auto-dimming rearview mirror, overhead console with dual storage bins, perimeter anti-theft alarm, and message center with compass display
- Moon & Tune Package – Power moonroof with sunshade and mini-overhead console, AM/FM stereo/6-disc in-dash CD changer with MP3 and SIRIUS Satellite Radio capabilities, and roof-rack side rails with crossbars
- Rear Cargo Convenience Package – Retractable cargo area cover and interior Cargo Management System

See your Lincoln Mercury Dealer or contact SIRIUS at 1-888-539-7474 for more information.  
Audiophile is a registered trademark of Audiophile, Inc. Preferred Suede is a registered trademark of Milliken & Company.

**Dimensions** (in.) front/rear Head room 40.4/39.2 Leg room (max.) 41.6/35.6 Shoulder room 56.8/55.9 Hip room 53.5/49.1 Length 174.3 Width (excl. mirrors) 70.1 Height 68.0 Wheelbase 103.2 Track 61.1/60.4  
**Cargo volume** (cu. ft.) Behind 1st row 62.8 Behind 1st row (2nd-row cushions removed) 66.3 Behind 2nd row 29.3 **Seating capacity** 5

**2.3L Duratec I-4** 153 hp @ 5800 rpm Torque 152 lb.-ft. @ 4250 rpm Compression ratio 9.7:1 Curb weight (lbs.) FWD: 3265 4WD: 3425 EPA-estimated fuel economy (mpg city/hwy.) FWD: 23/26 4WD: 21/24  
**3.0L Duratec V-6** 200 hp @ 6000 rpm Torque 193 lb.-ft. @ 4850 rpm Compression ratio 10.0:1 Curb weight (lbs.) FWD: 3305 4WD: 3498 EPA-estimated fuel economy (mpg city/hwy.) FWD: 20/24 4WD: 19/23

## WHEELS

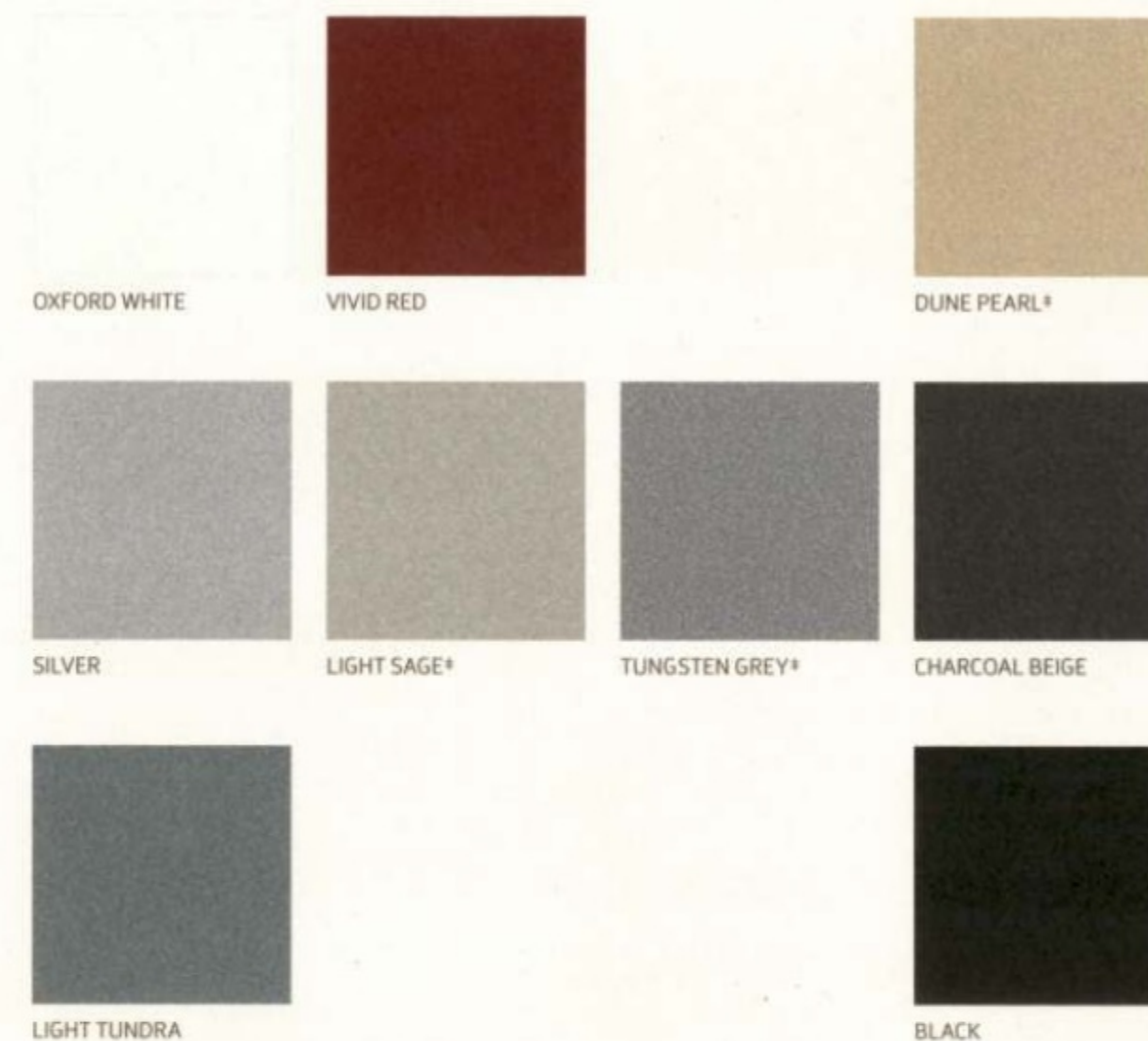


**16" 15-SPOKE PAINTED-ALUMINUM**  
Standard on Convenience and Luxury



**16" 15-SPOKE MACHINED-ALUMINUM**  
Standard on Premier

## EXTERIOR PAINT COLORS



\*New for 2007

Mercury uses clearcoat paint for beauty and protection. All exterior paints are Metallic except for Oxford White and Black. Colors are representative only.



Get the ride you want. Whether you plan to lease or finance, you'll find the choices that are right for you at Ford Credit. Ask your Lincoln Mercury Dealer for details or check us out at [www.fordcredit.com](http://www.fordcredit.com).

**Ford Motor Company Insurance Services** Choose the insurance program that's designed for your vehicle – Ford Motor Company Insurance Services. Our program helps you receive the rates and service you deserve. Call 877.367.3847, or visit us at [www.fordvip.com](http://www.fordvip.com) for a no-obligation quote. Insurance offered by American Road Services Company (in CA, American Road Insurance Agency), a licensed agency and subsidiary of Ford Motor Company.

**Ford Extended Service Plan** For a purchase or lease, the Ford Extended Service Plan (ESP) gives you "Peace-of-Mind" protection designed to cover key vehicle components and protect you from the cost of unexpected repairs. Ask your dealer for an ESP, the only service contract backed exclusively by Ford and honored at all Ford Lincoln Mercury dealerships.

Comparisons based on 2006 competitive models (Small Sport Utility Vehicle class), publicly available information and Ford certification data at time of printing. Some features discussed may be optional. Vehicles shown may contain optional equipment. Features shown may be offered only in combination with other options or subject to additional ordering requirements or limitations. Dimensions shown may vary due to optional features and/or production variability. Following publication of the catalog, certain changes in standard equipment, options and the like, or product delays may have occurred which would not be included in these pages. Your Lincoln Mercury Dealer is the best source for up-to-date information. Lincoln Mercury reserves the right to change product specifications at any time without incurring obligations.

## COLOR PALETTE

## INTERIOR CLOTH/LEATHER COLORS

■ CONVENIENCE ■ LUXURY ■ PREMIER □ AVAILABLE





**MARINER.** THE LUXURY OF SUBSTANCE AND STYLE.



**MERCURY MARINER HYBRID**



**MERCURY** | NEW DOORS OPENED



IMPROVING OUR WORLD IS ONLY ONE OF ITS BENEFITS. THERE'S ALSO INCREDIBLE FUEL EFFICIENCY, SAVVY VERSATILITY, SIGNIFICANT TAX SAVINGS,\* ACCESS TO HIGH-OCCUPANCY-VEHICLE (HOV) LANES,\*\* AND A BIG THANK YOU FROM A GREENER EARTH.



## 2006 GREEN CAR OF THE YEAR

### THE FIRST-EVER GREEN CAR AWARD

Introducing the **first-ever Green Car of the Year™ award** recipient – Mercury Mariner Hybrid. This honor capped a busy first year for Mariner Hybrid, which was also named “Best Compact SUV”<sup>†††</sup> by *ForbesAutos.com* and “Compact SUV of the Year” by the Texas Auto Writer’s Association.

With the 2007 Mercury Mariner Hybrid, your eyes will be as pleased as your intellect is satisfied. Along with all the rational benefits of driving Mariner Hybrid, your emotions will be lifted daily by its stylish sophistication. Like the eye-catching satin-aluminum exterior accents. And the stylish chrome, satin-aluminum and woodgrain interior finishes that enhance all the cargo room and 5-passenger comfort of this compact 4x4 SUV.

Under the skin, however, is where hybrid ingenuity elevates Mariner Hybrid’s dramatic looks and capability to the extraordinary. Just consider: With exhaust emissions lower than nearly all other vehicles on the market,<sup>†</sup> Mariner Hybrid delivers city fuel economy of 32 mpg – up to 86% better than the average V-6-equipped SUV.<sup>‡</sup> And we’re taking this environmental commitment a step further by funding clean energy projects (such as wind energy) designed to reduce greenhouse gas emissions by the same amount required to build Mariner Hybrid.

When your vehicle aligns with your passion for the environment, you’ve truly found a winner. Welcome to Mariner Hybrid’s sophisticated and efficient world.



**DISTINCTION THAT GOES THE DISTANCE. THERE'S GREAT SATISFACTION IN DISCOVERING A BETTER WAY. WITH EXCEPTIONAL FUEL EFFICIENCY, YET SUV ROOM FOR 5, ALL PATHS LEAD TO MERCURY MARINER HYBRID.**



4 LIGHT SAGE METALLIC: MARINER HYBRID



On every drive, Mercury Mariner Hybrid maximizes fuel efficiency while delivering an optimal driving experience. There are **3 main modes of operation: Electric Drive**, which uses no gas and powers the vehicle on electrical energy alone; **Hybrid Drive**, which uses the electric traction motor to give the gas engine an extra boost of power when you step on the accelerator; and **Idle Charging**, which uses power from the engine to charge the battery when the vehicle is running but not in motion.

#### Hybrid Powertrain Components

- [A] Gas Engine** is a 2.3L I-4 with Atkinson-cycle combustion that runs only when necessary, producing 124 lb.-ft. of torque, and 155 net hp teamed with the electric traction motor
- [B] eCVT** stands for electronically controlled Continuously Variable Transmission; it uses a single planetary gear set to facilitate its operation and also houses the electric traction and generator motors
- [C] Regenerative Braking** employs the electric traction motor to recapture energy that would otherwise be lost, then uses it to recharge the battery pack
- [D] Battery Pack** is a 330-volt nickel-metal-hydrate (NiMH) variety, supplying power to the electric traction motor and located at the cargo area floor

A vehicle system controller acts as the brain of the operation, automatically coordinating the 3 modes of operation and choosing the best power source – electric motor, gas engine, or a combination of both – in response to driving conditions.

The results of this advanced hybrid powertrain speak for themselves: lively V-6-like acceleration performance and a range of over 400 miles on 1 tank of gas in city driving.\*

\*Based on 15-gallon fuel tank; EPA-estimated 32 mpg city.





**AVAILABLE PREMIUM PACKAGE**  
 PREMIUM LEATHER-TRIMMED TWO-TONE SEATS  
 HEATED FRONT BUCKET SEATS  
 HEATED SIDEVIEW MIRRORS  
 HYBRID ENERGY/NAVIGATION/AUDIOPHILE SYSTEM WITH  
 6-DISC CD CHANGER, MP3 CAPABILITY AND 7 SPEAKERS  
 RETRACTABLE CARGO AREA COVER  
 SAFETY PACKAGE  
 REVERSE SENSING SYSTEM

**AVAILABLE SAFETY PACKAGE**  
 FRONT-SEAT SIDE AIRBAGS  
 SIDE-CURTAIN AIRBAGS WITH ROLLOVER SENSOR

**AVAILABLE POWER MOONROOF**  
 (REQUIRES PREMIUM PACKAGE)

**AVAILABLE LEATHER-TRIMMED SEATS**

In honor of your decision to help conserve the earth's precious resources, equip your new Mariner Hybrid with the **available Premium Package** as the perfect reward. Its premium leather-trimmed two-tone seats will draw admiring glances, while the Hybrid Energy/Navigation/Audiophile® System keeps you informed of all hybrid powertrain functions, and features a 6-disc in-dash CD changer with MP3 capability. Heated front seats keep things cozy, while heated sideview mirrors keep your view clear. In back, a retractable cargo area cover helps keep personal items concealed. An available **power moonroof** serves as the perfect breath of fresh air.

The **clean, modern design theme** of Mariner Hybrid's exterior continues inside with the subtle two-tone of Pebble seats with Light Parchment inserts, whether in standard cloth or available leather trim. Mariner Hybrid's interior styling is elevated to sophisticated levels with a **distinctive chrome** finish on the door handles and gear-shift surround, while a **satin-aluminum** finish and elegant **Sapele woodgrain** gracefully accent the flow-through center console and instrument panel.



Talk about cool technology. Mercury Mariner Hybrid's available Hybrid Energy/Navigation/Audiophile® System can display your fuel economy, current hybrid energy flow, navigation system maps, or audio details on its 3.8" LCD color screen. There are **5 different hybrid energy-flow screens**, including Idle, Electric Drive, Hybrid Drive, Engine Drive and Charging HV Battery (Regenerative Braking). Navigation aids include a **full map mode and turn-by-turn voice directions**. Rounding out this system is an Audiophile Sound System with 6-disc CD changer, MP3 capability and 4 speakers.

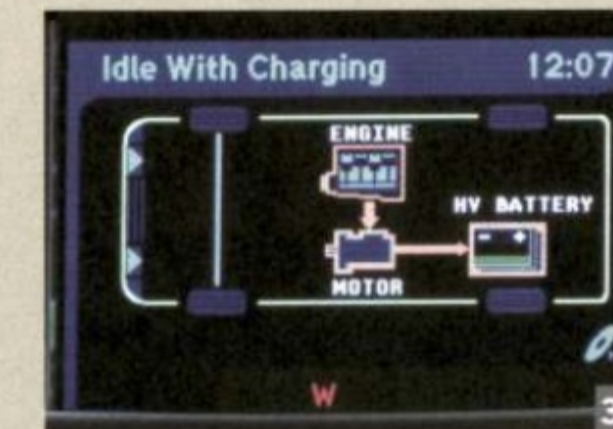
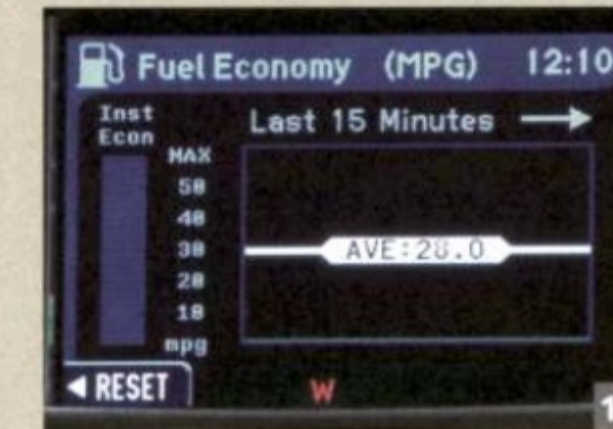
The Audiophile system is also available as a stand-alone option, cranking out 320 watts of peak power through its 7 speakers, including an 8" subwoofer that provides **deep, powerful bass tones**.



MARINER HYBRID WITH AVAILABLE EQUIPMENT



**HYBRID ENERGY/NAVIGATION/AUDIOPHILE SYSTEM\***  
 FUEL ECONOMY DISPLAY  
 NAVIGATION CAPABILITIES  
 HYBRID ENERGY-FLOW GRAPHIC  
 AUDIOPHILE 6-DISC IN-DASH CD CHANGER AND 4 SPEAKERS  
 MP3 CAPABILITY



- 1 FUEL ECONOMY DISPLAY
- 2 FULL MAP NAVIGATION
- 3 HYBRID ENERGY FLOW
- 4 AUDIOPHILE SOUND SYSTEM



\*Optional feature.



# HYBRID TECHNOLOGY PLUS AWARD-WINNING MARINER VERSATILITY. YOU'LL REAP THE BENEFITS FROM THIS COMBINATION. WITH MERCURY MARINER HYBRID, THE VERSATILE MARINER IS ENHANCED WITH FUEL-EFFICIENT HYBRID TECHNOLOGY, AND YOU'RE THE CLEAR WINNER.



All the versatility, storage capacity, satin-aluminum accents and sophisticated details of Mercury Mariner are standard on Mariner Hybrid as well, along with innovative hybrid technology that makes this Mariner even more unique. And with Mariner Hybrid's Intelligent 4WD System constantly monitoring traction – and automatically adjusting torque as needed – you'll have confident control in every situation.

"If you like the idea of driving a hybrid that doesn't force you to give up an ounce of practicality, you would be wise to test drive Mercury's Mariner Hybrid," says *Edmunds.com*. *Green Car Journal*,<sup>®</sup> in awarding its first-ever Green Car of the Year™ award, says "(Mariner Hybrid) achieves an estimated 32 mpg fuel economy in the city and 29 mpg on the highway, quite a statement for an SUV and something that's sure to be a motivator for those seeking a new and stylish, yet environmentally positive, sport utility vehicle."



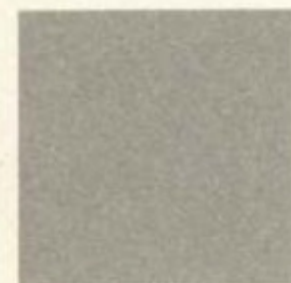
- 1 SOPHISTICATED SATIN-ALUMINUM ACCENTS
- 2 TWO-TONE SEATS
- 3 AUTO-DIMMING REARVIEW MIRROR
- 4 FRONT-DOOR STORAGE POCKETS
- 5 HEATED SIDEVIEW MIRRORS
- 6 SIX-WAY POWER DRIVER'S SEAT

Comparisons based on 2006 competitive models, publicly available information and Ford certification data at time of printing. Some features discussed may be optional. Vehicles shown may contain optional equipment. Features shown may be offered only in combination with other options or subject to additional ordering requirements or limitations. Dimensions shown may vary due to optional features and/or production variability. Following publication of the catalog, certain changes in standard equipment, options and the like, or product delays may have occurred which would not be included in these pages. Your Lincoln Mercury Dealer is the best source for up-to-date information. Lincoln Mercury reserves the right to change product specifications at any time without incurring obligations.

## EXTERIOR AND INTERIOR COLORS



VIVID RED



LIGHT SAGE\*



TUNGSTEN GREY\*



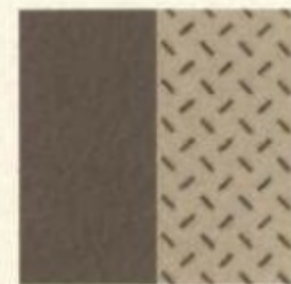
CHARCOAL BEIGE



BLACK



PEBBLE CLOTH/LIGHT PARCHMENT CLOTH INSERTS



PEBBLE LEATHER/LIGHT PARCHMENT LEATHER INSERTS



16" 5-SPOKE ALUMINUM WHEEL

## STANDARD EQUIPMENT

### POWERTRAIN/FUNCTIONALITY

2.3L I-4 Atkinson-cycle engine with Permanent-Magnet AC-synchronous electric motor  
4-wheel independent suspension  
330-volt sealed nickel-metal-hydrate (NiMH) battery  
16" 5-spoke aluminum wheels  
Electric Power-Assisted Steering (EPAS)  
Electronically controlled Continuously Variable Transmission (eCVT)  
Intelligent 4WD System  
Power 4-wheel disc brakes with Anti-lock Brake System (ABS)  
Regenerative Braking System

### EXTERIOR

2-speed rear windshield wiper with washer  
Chrome exhaust tip  
Front fog lamps  
Power sideview mirrors with manual-fold feature  
Privacy glass on rear doors, rear quarter windows and liftgate  
Roof-rack side rails  
Satin-aluminum grille  
Side repeater lamps  
Solar-tinted glass on front doors

### INTERIOR

Accessory delay for power windows  
Adjustable head restraints (5)  
Air conditioning  
AM/FM stereo/6-disc in-dash CD changer with MP3 and SIRIUS Satellite Radio capabilities, and 4 speakers  
Auto-dimming rearview mirror  
Floor console with storage bin and 2 cupholders  
Leather-wrapped steering wheel with tilt column and cruise control  
Message center with compass display  
Power windows with one-touch-down driver's-side feature  
Premium cloth front bucket seats with 6-way power driver's seat  
Rear 60/40 split-folding cloth seat

### SECURITY/SAFETY

Battery saver  
Belt-Minder® safety belt reminder  
Lower anchors and tether anchors for child-safety seats (LATCH) on rear outboard seat positions  
Perimeter anti-theft alarm  
Personal Safety System® with dual-stage driver and single-stage front-passenger airbags,\*\* and Front-Passenger Sensing System  
Remote keyless-entry system with 2 key fobs, driver's door-mounted keypad and illuminated entry system  
Safety belt restraint system with 3-point belts in all seating positions and front, height-adjustable shoulder belts  
SecuriLock® passive anti-theft system  
Side-intrusion door beams

### AVAILABLE EQUIPMENT

Audiophile® Sound System with AM/FM stereo/6-disc in-dash CD changer featuring MP3 and SIRIUS Satellite Radio capabilities, 7 speakers and automatic volume control  
Power moonroof with sunshade and mini-overhead console†  
Premium two-tone leather-trimmed, heated front bucket seats with 6-way power driver's seat and manual lumbar support

### AVAILABLE PACKAGES

**Hybrid Energy/Navigation/Audiophile System** – Includes hybrid energy-flow graphic; fuel economy display; Audiophile Sound System with MP3 capability, 6-disc CD changer under passenger seat and 4 speakers; and Navigation capability (full map, turn-by-turn, voice direction and points of interest)

**Premium Package** – Includes premium two-tone leather-trimmed, heated front bucket seats; heated sideview mirrors; Hybrid Energy/Navigation/Audiophile System; retractable cargo area cover; Safety Package; and Reverse Sensing System

**Safety Package** – Includes front-seat side airbags and Safety Canopy™ System with side-curtain airbags and rollover sensor

See your Lincoln Mercury Dealer or contact SIRIUS at 1-888-539-7474 for more information. Audiophile is a registered trademark of Audiophile, Inc.

<b>Dimensions</b> (in.) front/rear	Head room 40.4/39.2	Leg room (max.) 41.6/35.6	Shoulder room 56.8/55.9	Hip room 53.5/49.1
Length 174.3	Width (excl. mirrors) 70.1	Height 70.2	Wheelbase 103.2	Track 61.1/60.4
<b>Cargo volume</b> (cu. ft.)	Behind 1st row 62.1	Behind 1st row (2nd-row cushions removed) 65.5	Behind 2nd row 27.6	<b>Seating capacity</b> 5

Net horsepower 155	<b>2.3L Duratec I-4</b> 133 hp @ 6000 rpm	Torque 124 lb.-ft. @ 4250 rpm	<b>Electric motor</b> 94 hp @ 5000 rpm
<b>EPA-estimated fuel economy</b> 2.3L 4WD: 32 mpg city/29 hwy.			



MERCURY | NEW DOORS OPENED

mercuryvehicles.com

**Ford Motor Company Insurance Services** Choose the insurance program that's designed for your vehicle – Ford Motor Company Insurance Services. Our program helps you receive the rates and service you deserve. Call 877.367.3847 or visit us at [www.fordvip.com](http://www.fordvip.com) for a no-obligation quote. Insurance offered by American Road Services Company (in CA, American Road Insurance Agency), a licensed agency and subsidiary of Ford Motor Company.



Get the ride you want. Whether you plan to lease or finance, you'll find the choices that are right for you at Ford Credit. Ask your Lincoln Mercury Dealer for details or check us out at [www.fordcredit.com](http://www.fordcredit.com).

**Ford Extended Service Plan** For a purchase or lease, the Ford Extended Service Plan (ESP) gives you "Peace-of-Mind" protection designed to cover key vehicle components and protect you from the cost of unexpected repairs. Ask your dealer for an ESP, the only service contract backed exclusively by Ford and honored at all Ford Lincoln Mercury dealerships.



MARINER HYBRID. THE LUXURY OF MILE AFTER MILE.

