

HAYNES

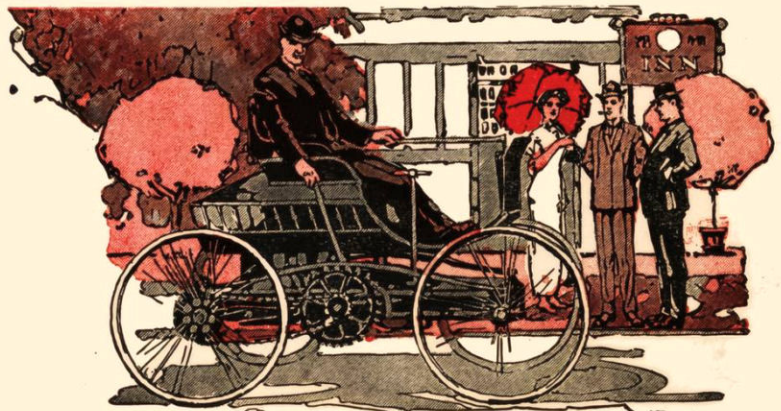


20 Years of Constant Effort
20 Years of Steady Progress
20 Years of Improvement
Are Responsible For This

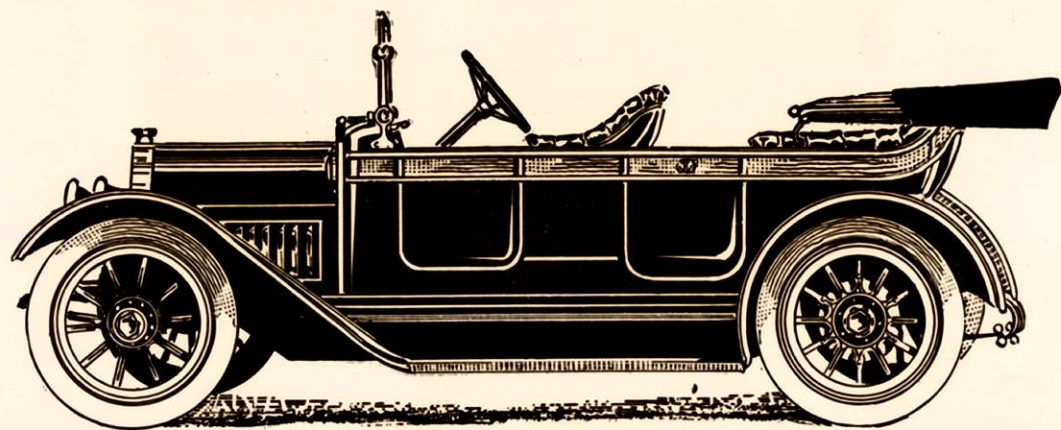
HAYNES

**ANNOUNCEMENT
EXTRAORDINARY**

An Event
Which Fittingly Celebrates
the 20th Anniversary of
America's First Automobile
Designed by Elwood Haynes
Eighteen Hundred Ninety Three
1913 Models 22, 23 & 24



Executed by
Catalog Service Corporation
Indianapolis



Haynes Model Number 24, \$1785

Electric Self Starting and Lighting and Completely Equipped

A Big, Beautiful, Luxurious, Powerful, Sturdy car.

A car which insures you SERVICE by having twenty years of motor car design and construction experience built into it.

A car equipped with the proven Haynes Simple Unit System Electric Self Starting and Electric Lighting outfit.

Every Haynes Model sold has been good value, but all precedents for automobile values are broken by these 1913 Models.

A car which sets the standard of Luxurious Comfort with its twelve inch thick upholstery, of genuine hand-buffed leather over super-extra curled hair.

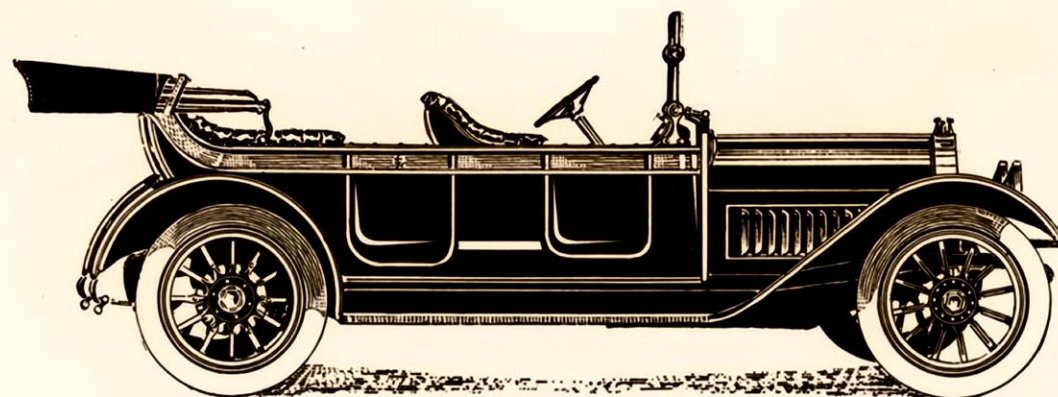
A car possessing every desirable up-to-date feature. Left hand drive, centre control. Driver can enter both sides. A low hung roomy body, wide doors, plenty of leg room in tonneau and front.

Haynes Standards are new to the \$1800 class. Considering what this standard stands for, this car is marketed at a sensational price.

\$1785 Haynes Model Number Twenty-four

\$2250 Haynes Model Number Twenty-two

\$2500 Haynes Model Number Twenty-three



Six Cylinder Haynes Electric Starting and Lighting \$2500 A Car that will Maintain the Haynes Prestige

For a long time our experimental department has been devoting its attention and efforts to the design of a six cylinder chassis. It is a problem which has very distinctive differences from the design of four cylinder cars.

Every feature was studied carefully. The details were a process of slow building. Every point was positively proven right before we went ahead to the next. That has been a Haynes policy for twenty years. To be sure of the mechanical correctness of every new feature incorporated in Haynes cars.

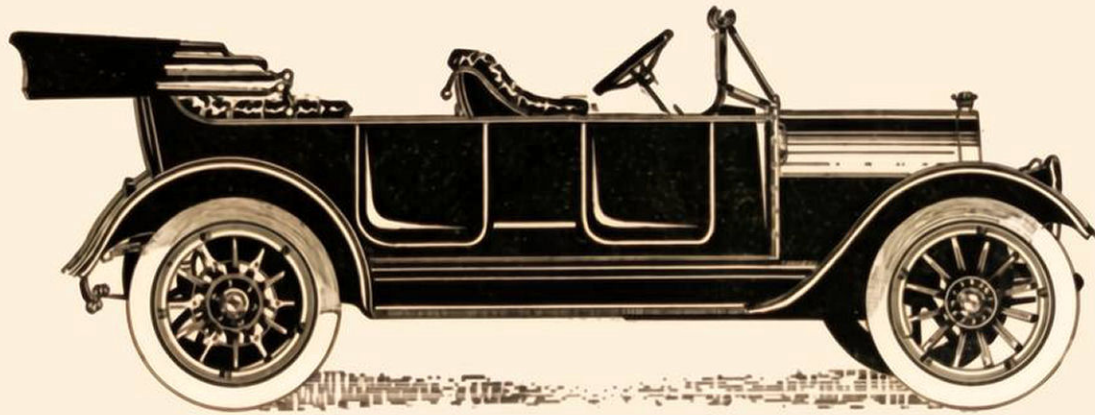
Elwood Haynes was five years perfecting his first car before a single one was sold. More recently it took two years before we were satisfied with the electric starting and lighting system which we announced last July.

And now, after months—nay—after years of

patient testing and hard work we are ready to announce a Haynes six cylinder car, with the confidence and assurance that it will add to the high character of the Haynes organization, and to the prestige of the Haynes mechanical superiority, that has been built up by twenty years of manufacturing experience.

To judge this car by its price—\$2500—you would get a false impression of its value. We have here an organization trained to the most economical production; a modern factory equipped with every machine and device for reducing manufacturing expense; we buy in quantities that gives us every possible price and discount concession.

Judge the value of this six cylinder model at \$2500 by the specifications on the other side of this folder.



Haynes Model 22, 40 Horse Power, \$2250
Electric Self Starting and Lighting and Complete Equipment

This Model 22 is the Haynes Leader. It is the biggest, finest, most powerful model in our 1913 line.

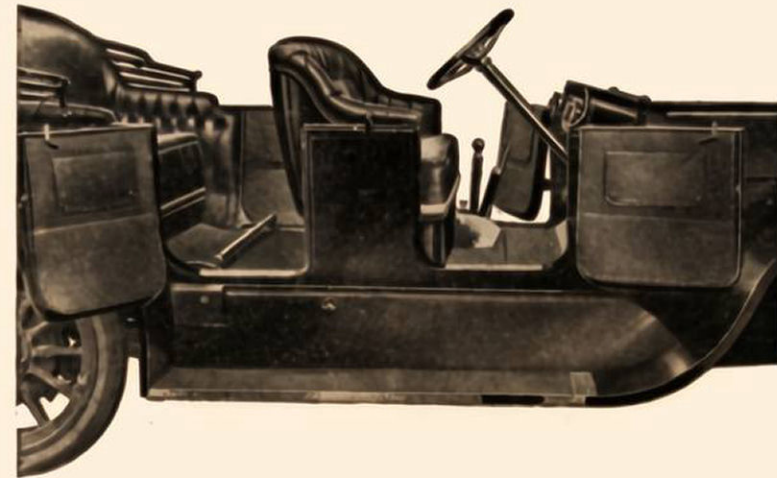
The utmost development of our organization in design, material and workmanship is embodied in this distinguished 1913 model.

Nothing we can add to give the owner service, satisfaction and pleasure has been omitted.

This car is by no means new to the automobile buying public. We announced it July 1st. In New York, Chicago, San Francisco and other markets where competition is most keen, and the car buying public most discriminating, this Model No. 22—America's first complete car with perfected Unit System Self Starting and Lighting outfit—met with great favor.

All 1913 Haynes Models are Equipped with the Unit System Electric Self Starting and Lighting Outfit, Separate Electric Starting Motor, Separate Electric Current Generator and Separate Magneto

12-Inch Upholstery



Comfort is the First Demand

of the car buyer today in his car. He insists on comfortable seats and back.

In the 1913 Haynes cars we have gone further than that. Every car has the luxury of twelve inch upholstery, made up of super-extra curled hair stuffed over coil steel springs, and covered with hand-buffed leather.

The bodies on our 1913 models are big, wide, roomy; with wide doors, hung on springs that carry it over the road with the smooth motion of a speeding yacht on a calm sea.

But the reason for the luxurious comfort of Haynes cars is due to other causes, in addition to

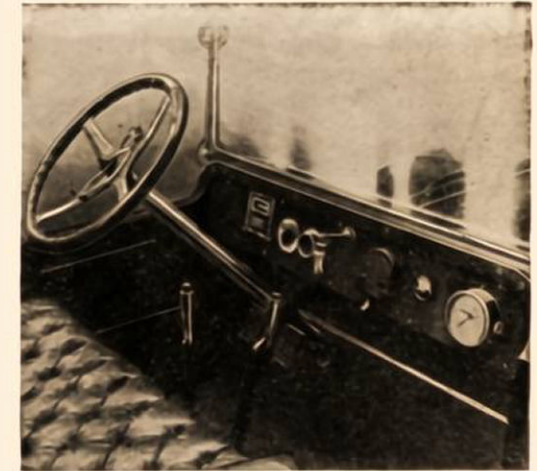
twelve inch upholstery, flexible springs, wide roomy bodies.

Comfort in a motor car lies also in the proper design of the chassis, in the distribution of the weight, in the absence of vibration of the motor, in the proper proportion, such as wheel base, size of wheels and tires, style of spring suspension, quality of springs.

These factors involve engineering principles, and experience that cannot be shown or explained. But twenty years of successful automobile building experience insures these elements being in Haynes 1913 cars.



Front View Models 23 and 24



Convenient Dash on Models 23 and 24

SPECIFICATIONS

Model Number 24

Pressed steel, 4 inches deep.

118 inches.

4¼ inches bore by 5½ inches stroke. L-head Cylinders cast in pairs offset ¼ inch. Flexible 4 point suspension.

Electric motor geared direct to fly-wheel. Current from 100 ampere hour storage battery, started by one movement of change gear lever.

Special Haynes design, combination 4 point flexible and rigid suspension.

Dual type magneto.

Stromberg Model B. Special.

Splash and force feed, oil reservoir in lower half of crank case and filled through bleeder pipe on side of crank case.

Stationary quadrant at top of steering post; short lever for spark, long for throttle; also foot accelerator.

Worm and gear type, corrugated rim, aluminum spider, 18 inch wheel. Left hand steering.

Haynes contracting steel band on hardened steel drum. Supported by crank shaft. Easily adjusted and lubricated.

Selective type, three speeds forward, one reverse, roller bearings. Operated through H-slotted bracket, centre control. Supported from two rear arms on engine base.

Forged. Two universal joints, metal encased and packed with hard grease.

Full floating type, pressed steel housing supporting full weight of car. Shaft, nickel steel.

Single piece I-beam, drop forged, spring seats forged integral.

Artillery type wood, twelve spokes front and rear. Bossed spokes alternating in rear wheels. Demountable rims.

34x4 front and rear.

Front, semi-elliptic, 40 inches long, 2 inches wide, 7 leaves; rear, three-quarter elliptic, 48 inches long, 2 inches wide, 7 leaves. Fitted with grease cups, both front and rear.

Internal and external on rear wheels. Drum 14 by 2½ inch face. Disappearing foot pedal operates external service brakes, and lever on right hand side of driver's seat operates internal emergency brakes.

Sheet metal, fore door. Black hand-buffed leather upholstery, spring backs to both seats filled with super-extra curled hair.

Body black. Wheels black, same as body. All metal equipment, black enamel and nickel.

Wine color.

Top, top cover, two large electric headlights, glass front, electric side lights flush in dash, electric tail light, electric cow/l lamp, electric starter, generator, 100 ampere hour storage battery, speedometer, horn, coat and foot rails, tire irons, full equipment tools, etc., also one extra demountable rim. Gasoline tank capacity 18 gallons.

Model Number 23

Frame Pressed steel, 4 inches deep.

Wheelbase 130 inches.

Motor 4¼ inches bore, by 5½ inch stroke. L-head Cylinders cast in pairs offset ¼ inch. Flexible 4 point Suspension.

Starter Electric motor geared direct to fly-wheel. Current from 100 ampere hour storage battery, started by one movement of change gear lever.

Suspension Special Haynes design, combination 4 point flexible and rigid suspension.

Ignition Dual type magneto.

Carburettion Stromberg Model B. Special.

Lubrication Splash and force feed, oil reservoir in lower half of crank case and filled through bleeder pipe on side of crank case.

Control Stationary quadrant at top of steering post; short lever for spark, long for throttle; also foot accelerator.

Steering Worm and gear type, corrugated rim, aluminum spider, 18 inch wheel. Left hand steering.

Clutch Haynes contracting steel band on hardened steel drum. Supported by crank shaft. Easily adjusted and lubricated.

Transmission Selective type, three speeds forward, one reverse, roller bearings. Operated through H-slotted bracket, centre control. Supported from two rear arms on engine base.

Propellor Shaft Forged. Two universal joints, metal encased and packed with hard grease.

Rear Axle Full floating type, pressed steel housing supporting full weight of car. Shaft, nickel steel.

Front Axle Single piece I-beam, drop forged, spring seats forged integral.

Wheels Artillery type wood, twelve spokes front and rear. Bossed spokes alternating in rear wheels. Demountable rims.

Tires 36x4½ front and rear.

Springs Front, semi-elliptic, 40 inches long, 2 inches wide, 7 leaves; rear, three-quarter elliptic, 48 inches long, 2 inches wide, 7 leaves. Fitted with grease cups, both front and rear.

Brakes Internal and external on rear wheels. Drum 16 by 2½ inch face. Disappearing foot pedal operates external service brakes, and lever on right hand side of driver's seat operates internal emergency brake.

Body Sheet steel, fore door. Black hand-buffed leather upholstery, spring backs to both seats filled with super-extra curled hair.

Colors Body black. Wheels black, same as body. All metal equipment, black enamel and nickel.

Color Options Wine color.

Equipment Top, top cover, two large electric headlights, glass front, electric side lights flush in dash, electric tail light, electric cow/l lamp, electric starter, generator, 100 ampere hour storage battery, speedometer, horn, coat and foot rails, tire irons, full equipment tools, etc., also one extra demountable rim. Gasoline tank capacity 18 gallons.