

Stearns

THE ULTIMATE CAR



THE F.B. STEARNS COMPANY
CLEVELAND, OHIO

Stearns

The Ultimate Car

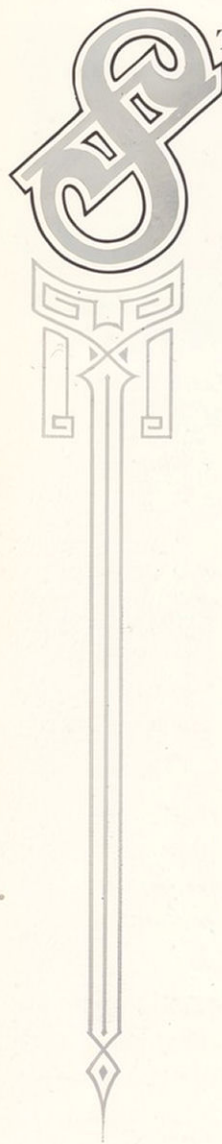
KNIGHT
TYPE
MOTOR
❖

Issued August, 1913

THE F. B. STEARNS COMPANY
CLEVELAND, OHIO, U. S. A.

BRANCHES AND DEALERS IN ONE
HUNDRED AND TWENTY-FIVE CITIES

Copyright, 1913, by
The F. B. Stearns Company
Cleveland, O.



STEARNS-KNIGHT cars for the current season, while remaining practically unchanged in mechanical construction, offer many refinements in body design, method of control and appointments. The best ideas of late American and European practice have been combined to make the new Stearns-Knight cars as advanced in beauty of line and ease of control as in mechanical design.

Three new models—a six-passenger Touring Car, Coupe and Sedan—have been added on both four- and six-cylinder chasses, making nine body styles available in either the four- or six-cylinder type.

All models have left-hand drive and center control—the logical method under the rules of the road prevailing in this country. The greater convenience and safety of this method are universally conceded.

Additional convenience is afforded by the centralized steering column control which is a feature of the new models. Instead of the clumsy, box-like affair sometimes seen, it is a neat arrangement of levers and buttons on the steering column just under the wheel—small and compact, and in no way detracting from the appearance of the car. The ignition system and carburetor are controlled by small levers, and the lights by small pull-and-push buttons, all conveniently placed on the steering column. The Klaxon horn button is located on the top of the steering column in the center of the wheel, thus completing the centralization of all controls within easy reach of the operator's hand.

Another feature of the new Stearns-Knight cars which is sure to meet the approval of a great number of motorists is the optional wire wheel equipment. Rudge-Whitworth wire wheels (one extra wheel) are furnished in place of the usual artillery type at a slight additional charge. The worm drive axle will also be optional on all models at an extra charge.

In beauty of line and luxury of detail finish these cars have never been equalled. The tapered hood and cowl and

straight-line body, forming one unbroken surface from front to back of car, constitute the finest possible example of the stream-line type of body which has attained so great a vogue in Europe. The exterior finish and the interior trimming and appointments leave nothing to be desired. The deep, thick upholstery and careful detail finish surpass even former Stearns models in luxury. The folding-arm chair type of auxiliary seat used in seven-passenger models is the finest example of its kind. The upholstered arms fold up with the seat, and the whole chair is quickly folded out of the way when not in use. Spacious pockets are provided in the tonneau, and many other appointments aid in enhancing the pleasure of motoring.

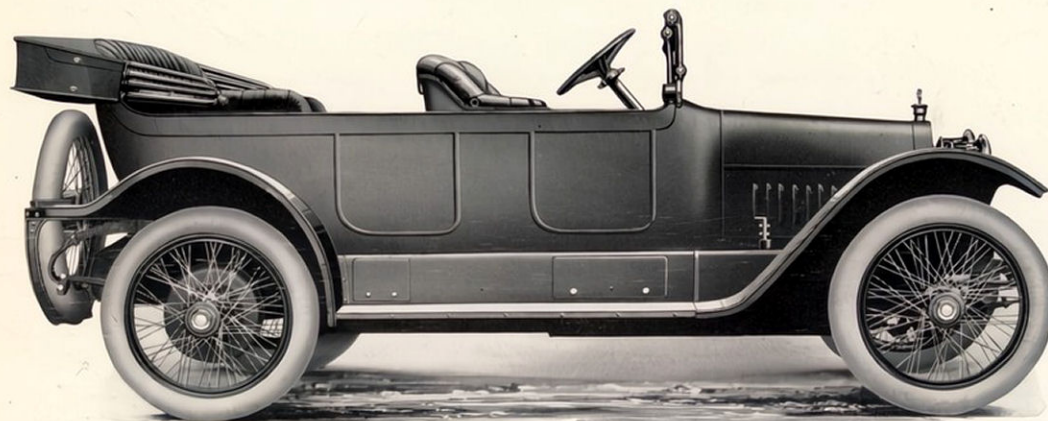
Pantasote has been substituted for silk mohair as standard top material, giving the top a smooth, rich appearance in keeping with the balance of the car. The three-, four- and six-passenger models have tops especially designed for quick handling, and all models carry a full equipment of side and interior curtains.

An important improvement has been effected in the method of carrying tools and tire equipment where they will be easily and quickly accessible and yet not in the way. Two tool compartments have been placed underneath the body, the covers being located over the running boards below the front seats. This is but one of several refinements in detail construction worked out for the greater convenience of the owner.

In mechanical construction the new models show no noteworthy changes from the design so successfully employed during the past two years, except that in the four-cylinder models the transmission has been moved forward from the rear axle to amidships—the same construction that has been employed in the six-cylinder models since their inception.

There have been no changes in the motors beyond those occasioned by the adoption of left-hand drive. The bore and stroke remain the same as last season— $4\frac{1}{4}$ x $5\frac{1}{2}$ inches in the four-cylinder type and $4\frac{1}{4}$ x $5\frac{3}{4}$ inches in the six-cylinder.

To be brief, the changes embodied in the new models are those which add to the convenience and comfort of the motorist, rather than deviations from the mechanical design which has proved its superiority in two years of hard service.

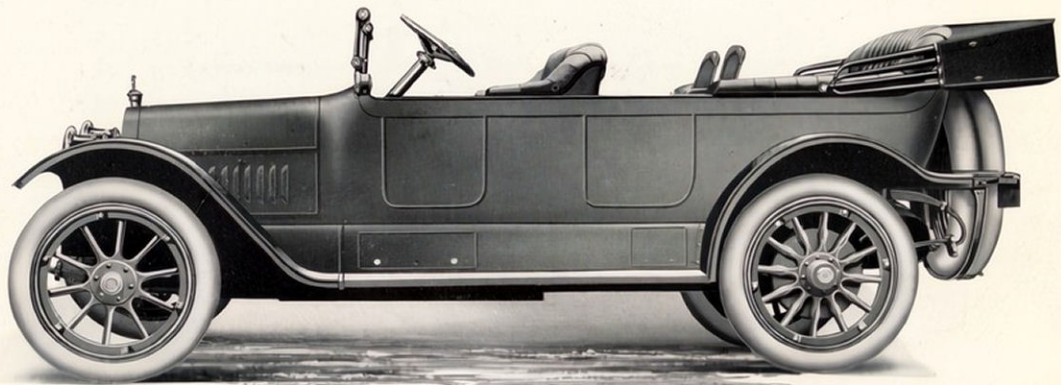


*Stearns-Knight Four-Cylinder
Five-Passenger Touring Car
(Wire Wheels Extra)*

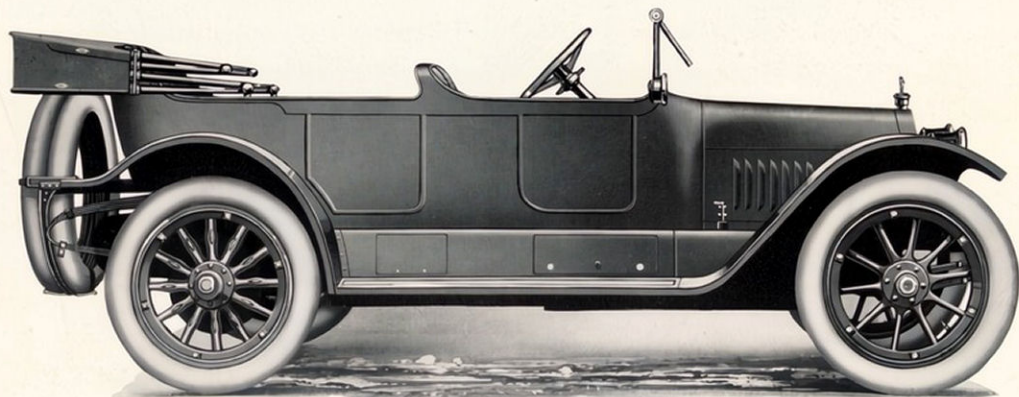
SPECIFICATIONS

*Four-Cylinder
Five-Passenger Touring Car*

<i>Wheel Base</i>	121 inches
<i>Tires</i>	36 x $4\frac{1}{2}$ inches all around
<i>Price</i>	\$3750
<i>Colors</i>	Blue, Maroon, Green
<i>Equipment:</i>	Gray & Davis electric starting and lighting system, speedometer, windshield, Klaxon horn, Pantasote top, slip cover and curtains, Q. D. demountable rims (two extra rims), etc.	
<i>Options:</i>	Wire wheels (one extra wheel), \$150 additional. Worm drive axle, \$100 additional.	



*Stearns-Knight Four-Cylinder
Seven-Passenger Touring Car*



*Stearns-Knight Four-Cylinder
Four-Passenger Light Touring Car*

SPECIFICATIONS

Four-Cylinder Seven-Passenger Touring Car

Wheel Base 127 inches
 Tires { 36 x 4½ inches front
 37 x 5 inches rear
 Price \$3900
 Colors Blue, Maroon, Green

Equipment: Gray & Davis electric starting and lighting system, speedometer, windshield, Klaxon horn, Pantasote top, slip cover and curtains, Q. D. demountable rims (two extra rims), etc.

Options: Wire wheels (one extra wheel), \$150 additional. Worm drive axle, \$100 additional.

Four-Cylinder Four-Passenger Light Touring Car

Wheel Base 121 inches
 Tires 36 x 4½ inches all around
 Price \$3750
 Colors: Blue, Maroon, Green, Battleship Gray, York Gray.

Equipment: Gray & Davis electric starting and lighting system, speedometer, windshield, Klaxon horn, Pantasote top, slip cover and curtains, Q. D. demountable rims (two extra rims), etc.

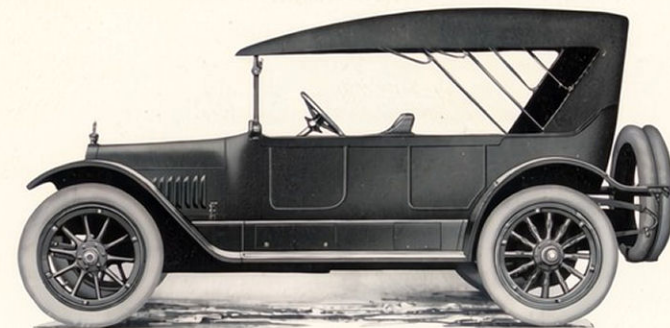
Options: Wire wheels (one extra wheel), \$150 additional. Worm drive axle, \$100 additional.

Four-Cylinder Six-Passenger Touring Car

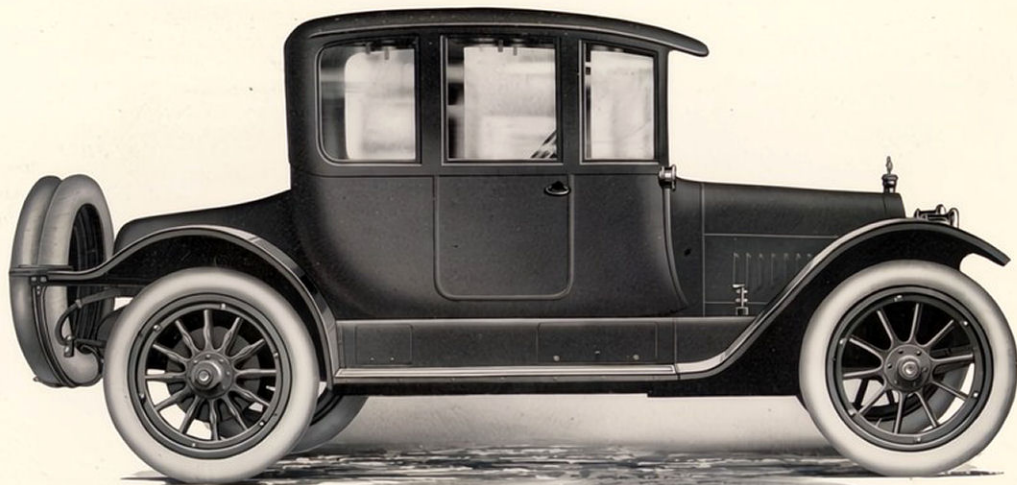
Chassis specifications and price same as the seven-passenger model; body specifications same as the six-cylinder six-passenger Touring Car illustrated on page ten.

Four-Cylinder Three-Passenger Roadster

Chassis specifications and price same as the four-passenger Light Touring Car; body specifications same as the six-cylinder Roadster illustrated on page twelve



*Stearns-Knight
Four-Cylinder
Four-Passenger
Light Touring Car
showing Special Top*



Stearns-Knight Four-Cylinder Coupe

SPECIFICATIONS

Four-Cylinder Coupe

Wheel Base 121 inches
Tires . . . 36 x 4½ inches all around
Price \$4450
Colors Blue, Maroon, Green

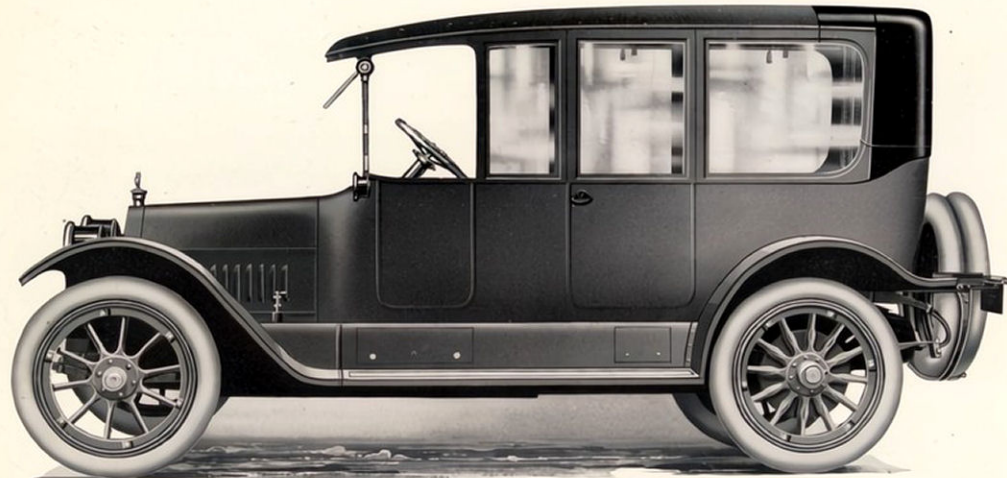
Equipment: Gray & Davis electric starting and lighting system, speedometer, Klaxon horn, Q. D. demountable rims (two extra rims), complete interior equipment, etc.

Options: Wire wheels (one extra wheel), \$150 additional. Worm drive axle, \$100 additional.

Four-Cylinder Sedan

Chassis specifications same as the Coupe model; body specifications same as the six-cylinder Sedan illustrated on page fifteen.

Price \$5000



Stearns-Knight Four-Cylinder Landaulet

SPECIFICATIONS

Four-Cylinder Landaulet

Four-Cylinder Limousine

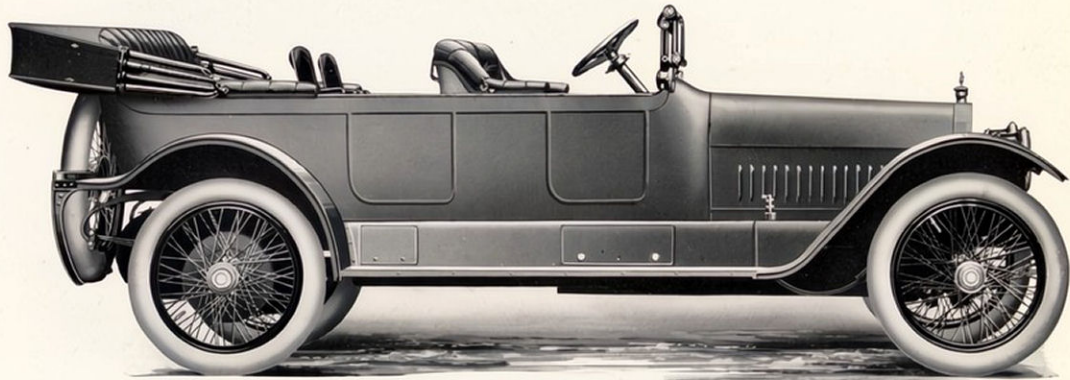
Chassis specifications same as the Landaulet model; body specifications same as the six-cylinder Limousine illustrated on page fourteen.

Price \$5000

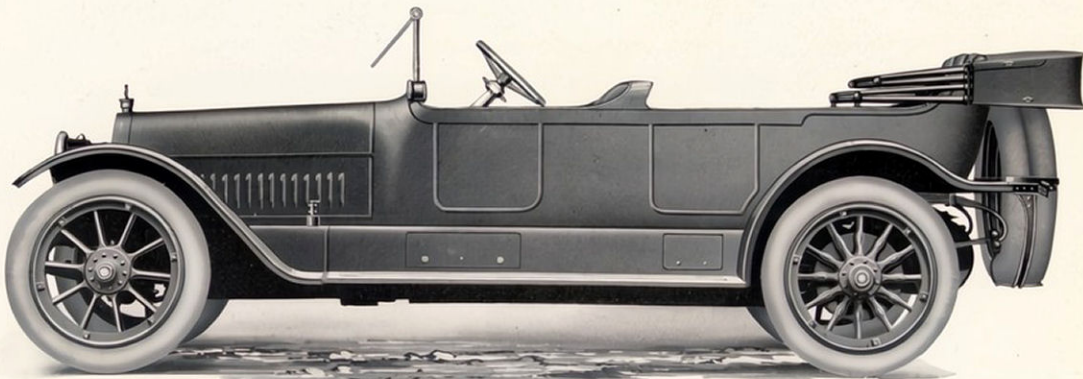
Wheel Base 127 inches
Tires { 36 x 4½ inches front
 { 37 x 5 inches rear
Price \$5100
Colors Blue, Maroon, Green

Equipment: Gray & Davis electric starting and lighting system, speedometer, Klaxon horn, Q. D. demountable rims (two extra rims), complete interior equipment, etc.

Options: Wire wheels (one extra wheel), \$150 additional. Worm drive axle, \$100 additional.



*Stearns-Knight Six-Cylinder
Seven-Passenger Touring Car
(Wire Wheels Extra)*



*Stearns-Knight Six-Cylinder
Six-Passenger Touring Car*

SPECIFICATIONS

*Six-Cylinder
Seven-Passenger Touring Car*

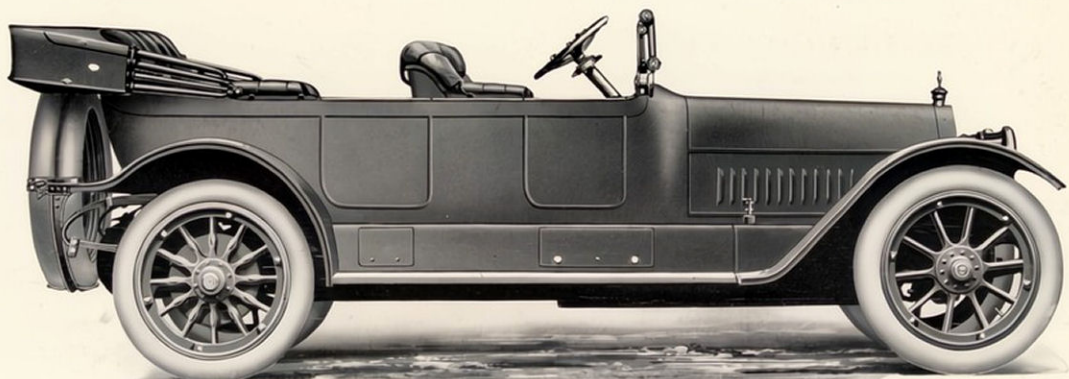
*Wheel Base 140 inches
Tires 37 x 5 inches all around
Price \$5000
Colors Blue, Maroon, Green
Equipment: Gray & Davis electric starting and lighting system, speedometer, windshield, Klaxon horn, Pantasote top, slip cover and curtains, Q. D. demountable rims (two extra rims), etc.
Options: Wire wheels (one extra wheel), \$150 additional. Worm drive axle, \$100 additional.*

*Six-Cylinder
Six-Passenger Touring Car*

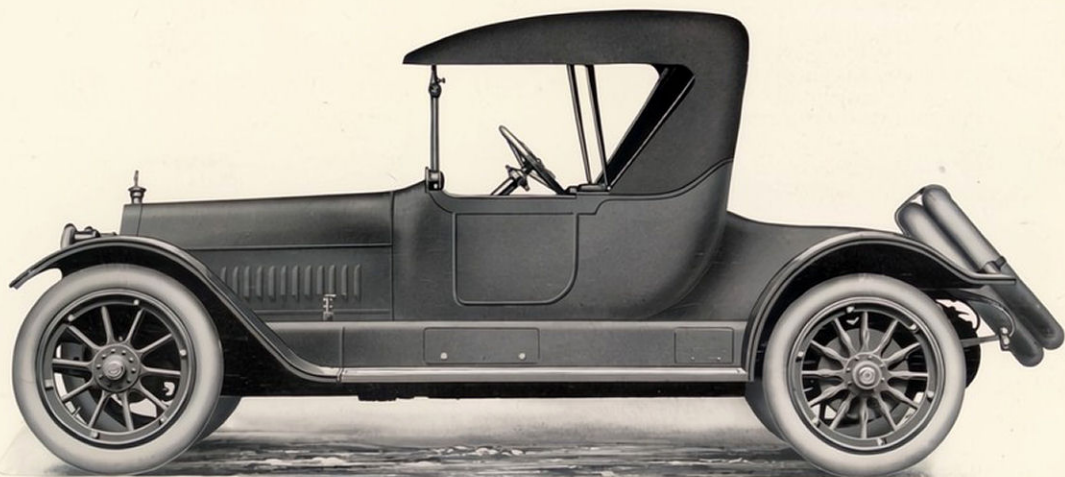
*Wheel Base 140 inches
Tires 37 x 5 inches all around
Price \$5000
Colors: Blue, Maroon, Green, Battleship Gray, York Gray.
Equipment: Gray & Davis electric starting and lighting system, speedometer, windshield, Klaxon horn, Pantasote top, slip cover and curtains, Q. D. demountable rims (two extra rims), etc.
Options: Wire wheels (one extra wheel), \$150 additional. Worm drive axle, \$100 additional.*



*Folding Tonneau
Seat used in
Seven-Passenger
Touring Cars*



*Stearns-Knight Six-Cylinder
Five-Passenger Touring Car*



*Stearns-Knight Six-Cylinder
Three-Passenger Roadster*

SPECIFICATIONS

Six-Cylinder Five-Passenger Touring Car

Wheel Base 134 inches
Tires 37 x 5 inches all around
Price \$4850
Colors Blue, Maroon, Green

Equipment: Gray & Davis electric starting and lighting system, speedometer, windshield, Klaxon horn, Pantasote top, slip cover and curtains, Q. D. demountable rims (two extra rims), etc.

Options: Wire wheels (one extra wheel), \$150 additional. Worm drive axle, \$100 additional.

Six-Cylinder Three-Passenger Roadster

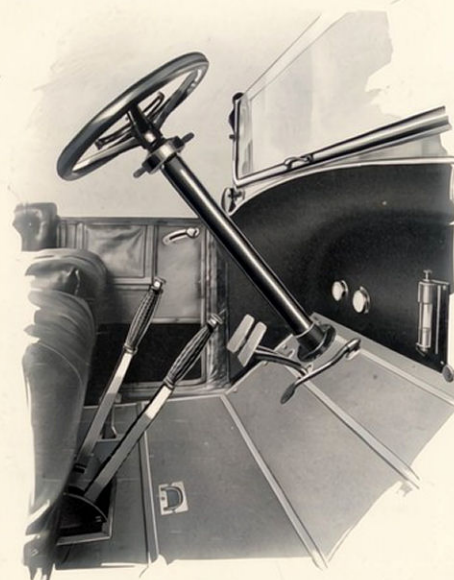
Wheel Base 134 inches
Tires 37 x 5 inches all around
Price \$4850
Colors: Blue, Maroon, Green, Battleship Gray, York Gray.

Equipment: Gray & Davis electric starting and lighting system, speedometer, windshield, Klaxon horn, Pantasote top, slip cover and curtains, Q. D. demountable rims (two extra rims), etc.

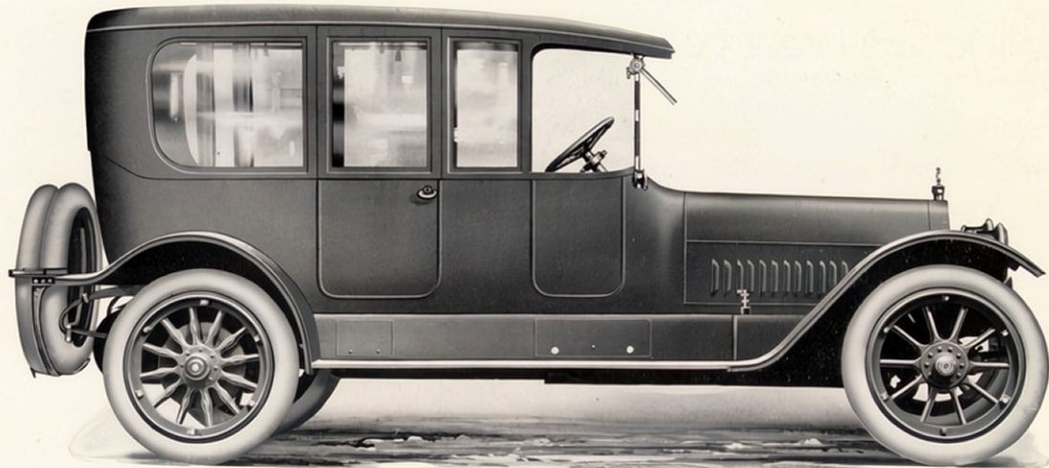
Options: Wire wheels (one extra wheel), \$150 additional. Worm drive axle, \$100 additional.

Six-Cylinder Four-Passenger Light Touring Car

Chassis specifications and price same as the Roadster model; body specifications same as the four-cylinder four-passenger Light Touring Car illustrated on page six.



*View showing
Left-Hand Drive,
Center Shifting and
Brake Levers and
Steering Column
Control*



Stearns-Knight Six-Cylinder Limousine

SPECIFICATIONS

Six-Cylinder Limousine

Wheel Base 140 inches
Tires 37 x 5 inches all around
Price \$6100
Colors Blue, Maroon, Green

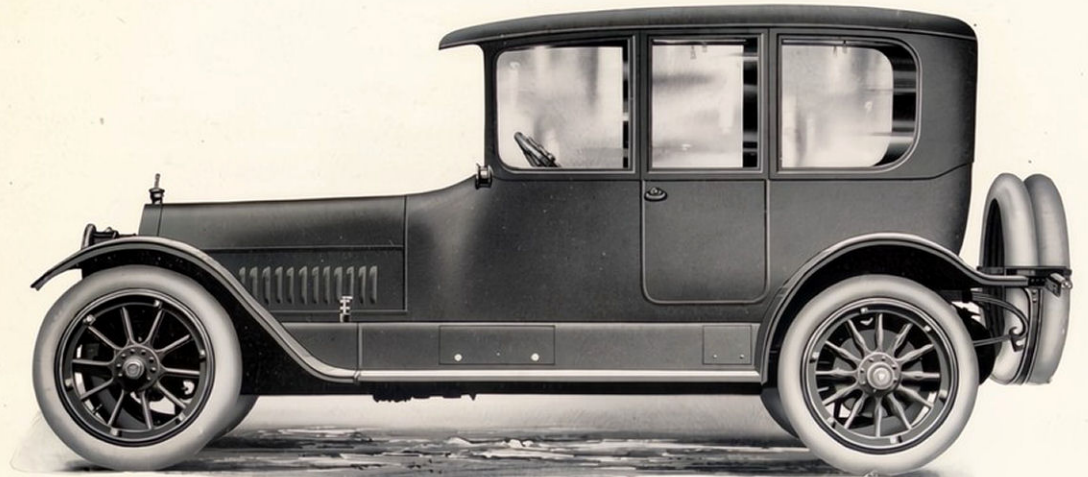
Equipment: Gray & Davis electric starting and lighting system, speedometer, Klaxon horn, Q. D. demountable rims (two extra rims), complete interior equipment, etc.

Options: Wire wheels (one extra wheel), \$150 additional. Worm drive axle \$100 additional.

Six-Cylinder Landaulet

Chassis specifications same as the Limousine model; body specifications same as the four-cylinder Landaulet illustrated on page nine.

Price \$6200



Stearns-Knight Six-Cylinder Sedan

SPECIFICATIONS

Six-Cylinder Sedan

Wheel Base 134 inches
Tires 37 x 5 inches all around
Price \$6100
Colors Blue, Maroon, Green

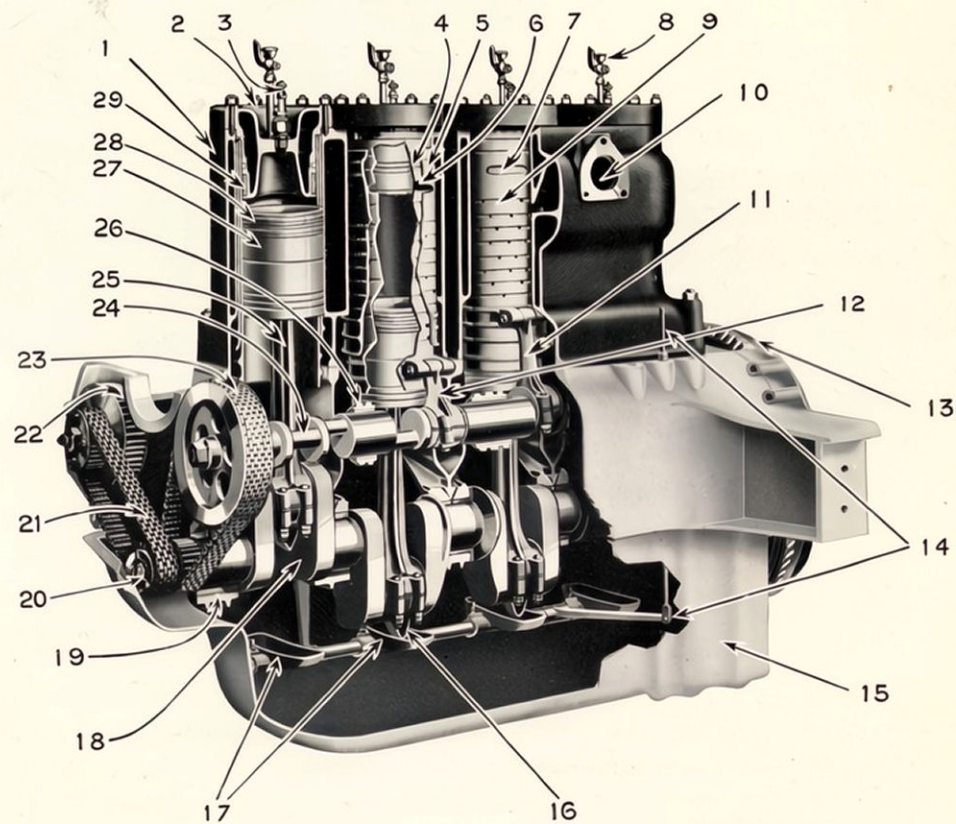
Equipment: Gray & Davis electric starting and lighting system, speedometer, Klaxon horn, Q. D. demountable rims (two extra rims) complete interior equipment, etc.

Options: Wire wheels (one extra wheel), \$150 additional. Worm drive axle, \$100 additional.

Six-Cylinder Coupe

Chassis specifications same as the Sedan model; body specifications same as the four-cylinder Coupe illustrated on page eight.

Price \$5550



Sectional View of Stearns-Knight Four-Cylinder Motor

- | | | |
|---|--|---|
| 1. Cylinder | 13. Fly wheel | 22. Silent chain driving sprocket for electric generator (on 4-cylinder models) |
| 2. Water-jacketed cylinder head | 14. Oil trough adjusting lever connected to throttle | 23. Silent chain drive for eccentric shaft |
| 3. Spark plug | 15. Lower part of crank case, containing oil pump, strainer and piping | 24. Eccentric shaft |
| 4. Inner sleeve | 16. Oil scoop | 25. Connecting rod |
| 5. Outer sleeve | 17. Adjustable oil troughs | 26. Bearing for eccentric shaft |
| 6-7. Port openings in sleeves | 18. Crank shaft | 27. Piston |
| 8. Priming cup | 19. Crank shaft bearing | 28. Piston rings |
| 9. Oiling grooves in sleeves | 20. Starting clutch | 29. Cylinder-head ring (junk ring) |
| 10. Port opening in cylinder | 21. Silent chain drive for magneto shaft | |
| 11. Connecting rod operating outer sleeve | | |
| 12. Connecting rod operating inner sleeve | | |

