

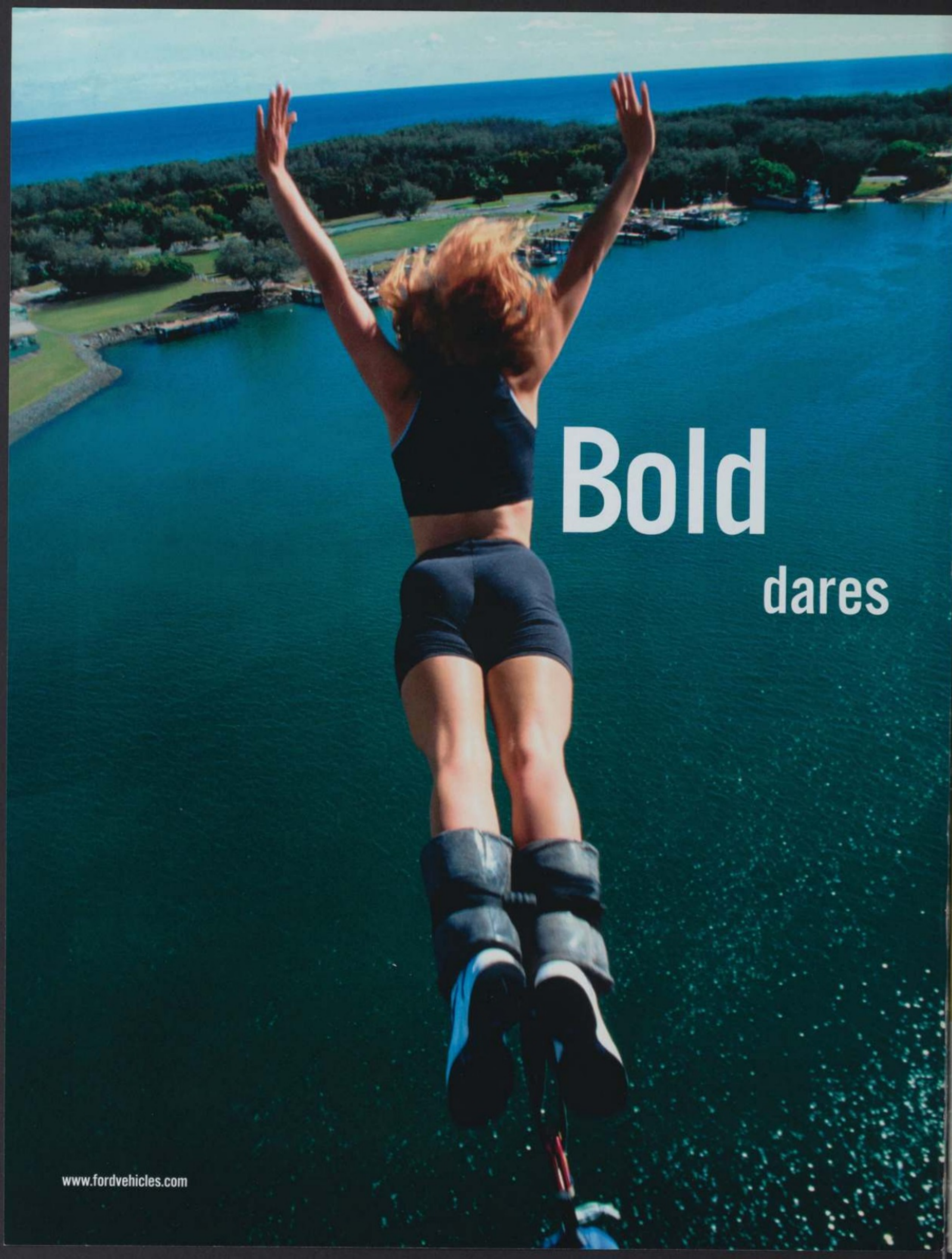


BOLDMOVES

07 SUV and
CROSSOVER

PLUS THE NEW 08 ESCAPE & ESCAPE HYBRID

www.fordvehicles.com



Bold
dares

www.fordvehicles.com

to live
OUTSIDE the lines.



INTRODUCING THE ALL-NEW 2007 EDGE

**WE'RE BOLDLY REDEFINING THE PATH
TO YOUR EVERYDAY ADVENTURES.**

Inspired by your desire to venture forth – with friends, family and gear – to discover exciting new destinations around every bend, we're offering an extensive lineup of Ford SUVs and Crossovers for 2007. We're also bringing you the new Escape and Escape Hybrid for 2008. Inside each you'll find roomy seating, comforting conveniences, and all the cargo-carrying versatility you've come to expect from Ford.



FREESTYLE

THE NEW 2008
ESCAPE & ESCAPE HYBRID

EXPLORER

SPORT TRAC

THE NEW EXPEDITION &
ALL-NEW EXPEDITION EL



BOLDMOVES

FIND YOUR EDGE

YOU'RE ALL ABOUT BOLD MOVES — AND LOOKING TO MAKE ANOTHER. IT'S TIME TO STEP UP TO THE EDGE, THE HOT NEW CROSSOVER UTILITY VEHICLE (CUV) FROM FORD THAT'S BUILT TO ENHANCE YOUR ACTIVE, SOCIAL LIFESTYLE.

BOLD DESIGN + FLEXIBILITY

- Standout styling inside and out, including a chrome 3-bar grille and dual exhaust tips
- Class-exclusive* available Vista Roof™
- Standard 2nd-row fold-flat seat
- Available 2nd-row EasyFold™ rear seatback release
- Available fold-flat front-passenger seat
- Most configurable center console in its class
- Standard auxiliary audio input jack for your personal MP3 player
- Available Navigation System, satellite radio and rear-seat DVD system

SPORTY HANDLING

- All-new multilink independent rear suspension provides sports sedan-like handling
- Active All-Wheel-Drive (AWD) system available
- AdvanceTrac® with RSC® (Roll Stability Control) standard

ENERGETIC PERFORMANCE

- All-new 3.5L Duratec 35 V6 engine and all-new 6-speed adaptive automatic transmission
- Best-in-class 265 hp and 250 lb.-ft. of torque

*Medium CUV class with standard 6-cylinder engine.

FLEXIBLE INTERIOR DESIGN

Whether you need room for your latest find or for friends headed out on the town, Edge offers the perfect solution with up to 69.6 cu. ft. of available cargo space or seating for 5 adults. Smart features, like the available Seating Flexibility Package with its fold-flat front-passenger seat, EasyFold rear seatback release and leather-trimmed seating, help make quick work of cargo-carrying tasks.



Vista Roof serves up the only 2-panel panoramic view available in the class. This invigorating feature is optional on SEL models.



EDGE SEL IN BLAZING COPPER METALLIC WITH AVAILABLE EQUIPMENT

THE ALL-NEW
EDGE

www.fordvehicles.com





EDGE SE*

3.5L Duratec 35 V6 engine • 6-speed automatic transmission • Chrome 3-bar grille • 17" painted-aluminum wheels • Quad-beam halogen headlamps • Black door handles, power sideview mirrors, rear spoiler and rocker moldings • Dual steel exhaust tips • Cloth front bucket seats with manual driver lumbar • 60/40 split rear fold-flat cloth seat with manual recline • AM/FM stereo with single-CD player and MP3 capability • Auxiliary audio input jack • Remote keyless-entry system

EDGE SEL*

Body-color painted door handles, sideview mirror accents and rear spoiler • Dual chrome exhaust tips • Fog lamps with chrome bezels • SEL badge • AM/FM stereo/6-disc in-dash CD changer with MP3 capability and secondary steering wheel-mounted audio controls • Leather-wrapped steering wheel and gear shifter • Overhead console with sunglasses holder • Additional chrome accents on registers and shifter stalk • Unique aluminum instrument panel finish • 6-way power driver's seat • Convenience Group with automatic headlamps, auto-dimming rearview mirror and driver's-side keyless-entry keypad • Message center

Optional SEL Plus combines Premium Package and Seating Flexibility Package.

Each series includes the standard equipment of the previous series, except where additions/exceptions are noted.

*SE shown at right. SEL shown at left. Vehicles shown may contain optional equipment.



SECURE STATE OF MIND

You'll travel with confidence thanks to the maneuverability and agility of Edge's specially tuned fully independent suspension and standard AdvanceTrac® with class-exclusive RSC® (Roll Stability Control). Equip Edge with the optional active All-Wheel-Drive (AWD) system, and it will be able to transfer torque both front to rear and side to side, which means you'll keep moving even if only one wheel has traction. Also standard on every Edge: front-seat side airbags, our patented Safety Canopy™ System with rollover sensor, and the class-exclusive Personal Safety System® with dual front airbags.



STRIKING STYLE

Sleek lines and crisp accents combine to create the bold exterior design that's unmistakably Edge. Its sporty stance is enhanced by the Ford 3-bar chrome grille, quad-beam halogen headlamps and dual exhaust tips. Plus, it's planted on your choice of standard 17" or available 18" wheels and tires.



PANORAMIC PERSPECTIVE

Vista Roof™ serves up the only 2-panel panoramic view available in the class. Optional on SEL, this invigorating feature encompasses over 39% of the total roof area, creating a daylight opening that's over 3 times larger than the average traditional moonroof. In its fully open position, Vista Roof provides a maximum total-air opening of over 4.6 sq. ft. That's a whole lot of sky. And all that's left for you to do is fill it with exciting new views.



EASYFOLD™ ONLY ON EDGE

The rear seatbacks in every Edge fold flat with a simple pull of the manual release on the side of each seat. With the class-exclusive EasyFold rear seatback release, you can create a flat cargo loadfloor in seconds by simply pushing and holding a button in the rear cargo area. EasyFold is included in the Seating Flexibility Package that's optional on SEL.



REWARDING TECHNOLOGY

Optional on Edge SEL, our DVD-based Navigation System with intersection programming actually calls out upcoming street names for you. It's located front and center for easy reference and can help you locate points of interest such as gas stations, ATMs, restaurants and more. For your listening pleasure, the available Audiophile® Sound System features a 6-disc in-dash CD changer with 9 speakers in 5 strategic locations. Add the optional SIRIUS Satellite Radio** and use the 6-month subscription to start surfing over 130 channels of coast-to-coast sports, news, entertainment and 100% commercial-free music.

**See your Ford Dealer or contact SIRIUS at 1-888-539-7474 for more information. SIRIUS Satellite Radio, "SIRIUS" and related marks are registered trademarks of SIRIUS Satellite Radio Inc.

Audiophile is a registered trademark of Audiophile, Inc.



MOST VERSATILE

Edge's center console offers more possible storage configurations than any other vehicle in the class thanks to its multipurpose set of movable dividers. It also includes a power point and a standard auxiliary audio input jack.



CROWD PLEASER

Passengers can use the Rear-Seat DVD Entertainment System to watch DVDs, listen to CDs, or play video games by plugging in a compatible gaming system. Optional on Edge SEL.

WHEELS

- A - 17" Painted-Aluminum Standard
- B - 18" Painted-Aluminum Optional on SEL
- C - 18" Premium Chrome-Clad Optional on SEL



EXTERIOR COLORS



THE ALL-NEW
EDGE

www.fordvehicles.com

YOUR STYLE: FREESTYLE

FORD'S ORIGINAL CROSSOVER IS AN ENTICING BLEND OF SCULPTED AESTHETICS, REFINED ATHLETICISM, FUEL EFFICIENCY AND SERIOUS INTERIOR VERSATILITY.

BEST-IN-CLASS* TRAITS

- Fuel economy**
- 3rd-row head room

CLASS-EXCLUSIVE FEATURES

- HALDEX[®] All-Wheel-Drive system, optional
- SPACE Architecture™
- Fold-down front-passenger seat

HIGHEST SAFETY RATINGS

- Government crash test safety ratings, 5 Stars in all 4 categories, from the National Highway Traffic Safety Administration (NHTSA)
- "Good" ratings for front, side and rear crash protection — Insurance Institute for Highway Safety (IIHS)

HIGHER ASSURANCE

- High marks in NHTSA rollover resistance testing
- Standard Safety Canopy™ System** with 3-row side-curtain airbags and rollover sensor
- Standard front-seat side airbags**

*Class is Medium V6 Crossover vehicles with 3rd row.

**Based on EPA-estimated fuel economy for FWD/AWD versions.

†Including seat well (5.0 cu. ft.).

‡Available on units produced on or after 9/5/06.

HALDEX is a registered trademark owned by Haldex, AB.



Freestyle's All-Wheel-Drive (AWD) configuration is always at the ready, even on dry pavement.



FREESTYLE SEL IN REDFIRE METALLIC WITH OPTIONAL INTERIOR CONVENIENCE GROUP

LIVE LARGE

Freestyle not only offers seating for up to 7, it also lays claim to the most 3rd-row head room in its class. And drawing on Ford's highly touted sport-utility DNA, Freestyle provides Command Seating™ up front. This elevated position literally raises the seats for exceptional driver visibility, while making entry and exit easier.

07 FREESTYLE

www.fordvehicles.com





FREESTYLE SEL

3.0L Duratec 30 DOHC V6 engine • Continuously Variable Transmission (CVT) • 3-row Safety Canopy™ System with side-curtain airbags and rollover detection sensor • Front-seat side airbags • Anti-theft perimeter alarm system • 4-wheel disc Anti-lock Brake System • Accent-colored cladding • Body-color door handles • Chrome grille surround • Power, heated body-color sideview mirrors • Security approach lamps • Air conditioning • Auto-dimming rearview mirror • Leather-wrapped steering wheel and shift knob • Message center with compass • Remote keyless illuminated entry system with driver's door-mounted keypad • Steering wheel-mounted cruise and audio controls • AM/FM stereo with single-CD player and clock • 6-way power driver's seat with manual lumbar • Command Seating™ • Theater-style seating • 17" 5-spoke bright-aluminum wheels • P215/65R17 tires

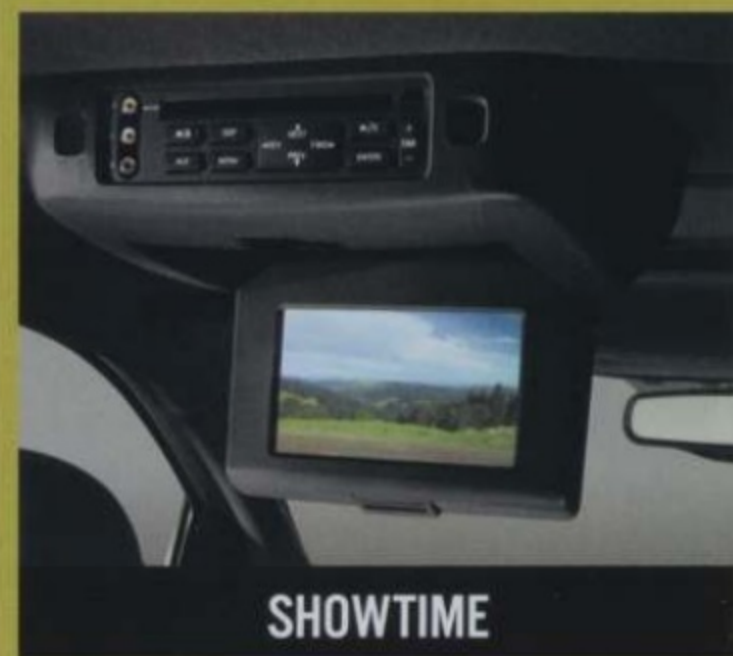
Each series includes the standard equipment of the previous series, except where additions/exceptions are noted.

Vehicles shown may contain optional equipment.



FREESTYLE LIMITED

Body-color cladding • Fog lamps • Sideview mirrors with memory • Dual-zone Electronic Automatic Temperature Control • Memory settings for driver's seat and sideview mirrors • Outside temperature display • Audiophile® 6-disc in-dash sound system with subwoofer • Perforated leather-trimmed seats (vinyl 3rd row) • 8-way power driver's seat with memory • 4-way power front-passenger's seat with manual lumbar • Heated front seats • 2nd-row comfort seat tracks with forward/back adjustment (6-passenger only) • 2nd-row floor console (6-passenger only) • 3rd-row 50/50 split fold-in-floor bench seat • Woodgrain-appearance appliqué on instrument panel • 18" 5-spoke bright-aluminum wheels • P225/60R18 Pirelli tires



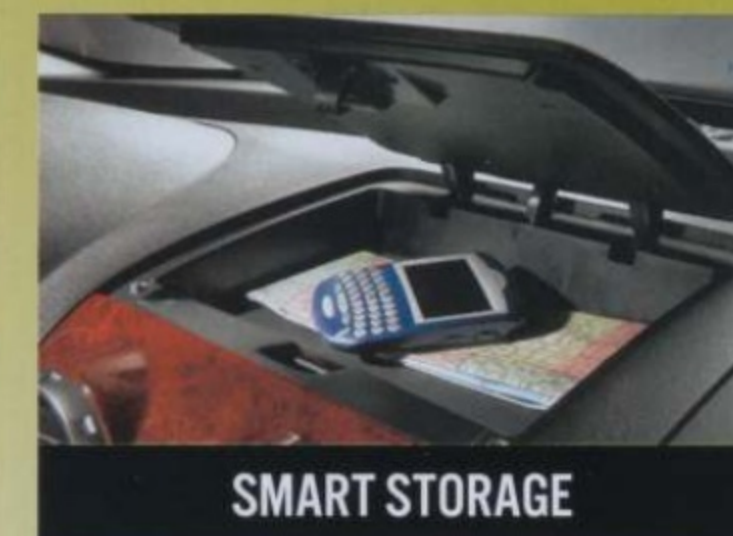
SHOWTIME

For rear-seat guests, the optional DVD Family Entertainment Center features a 7" viewing screen, 2 sets of wireless headphones, an infrared remote control, and a dual-media component that allows front-seat passengers to listen to the radio or a CD while the entertainment center plays.



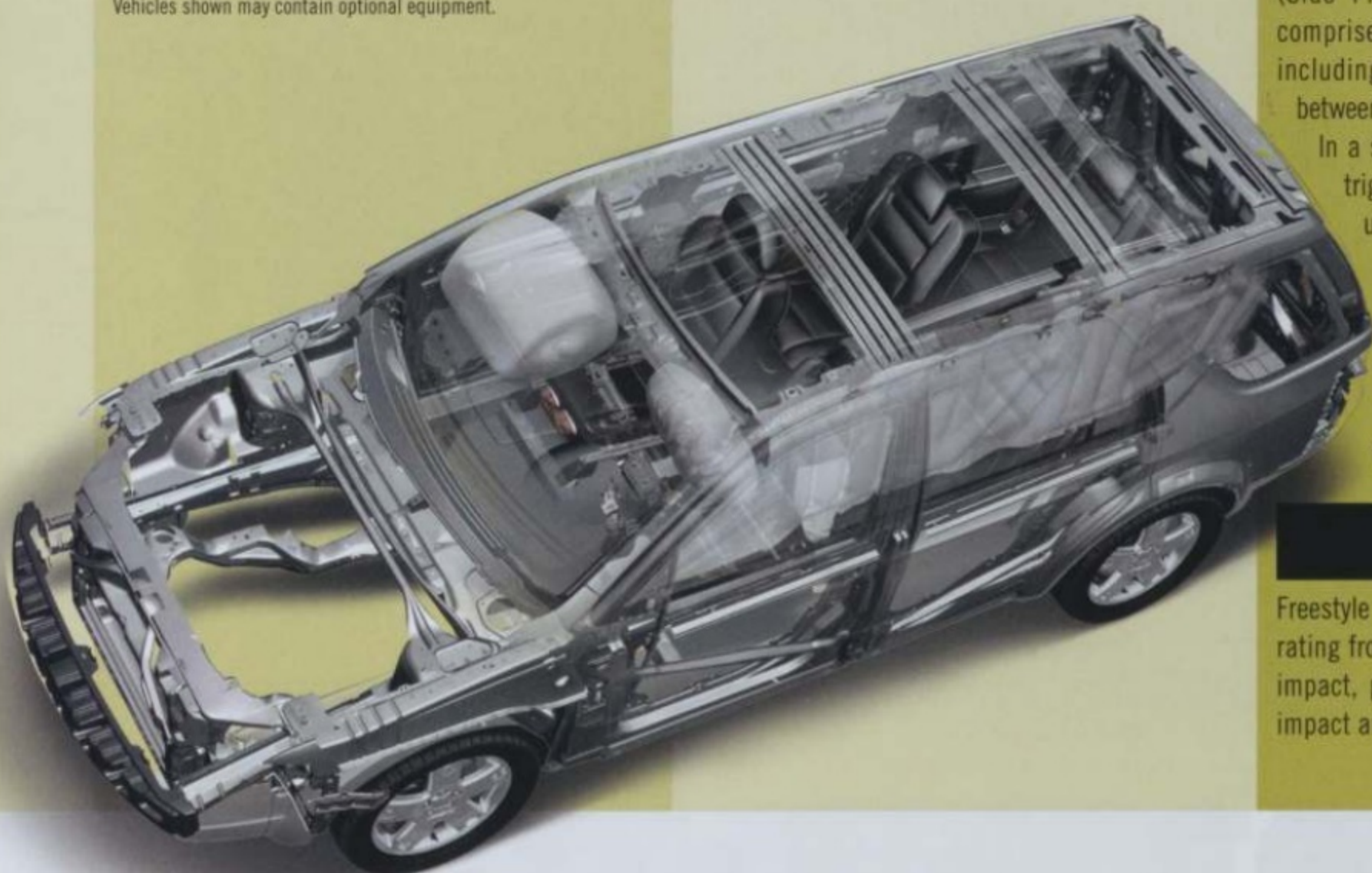
SWITCH AROUND

Reconfigure again and again. Whether it's passengers or cargo, Freestyle quickly adapts. It can accommodate a crowd of up to 6 or 7 and their carry-ons. Or swallow up items as large as 10' in length with the front-passenger seatback folded down.



SMART STORAGE

A clever bin on top of the instrument panel keeps small items close at hand, yet out of sight. It's the perfect spot for cell phones, PDAs and maps.

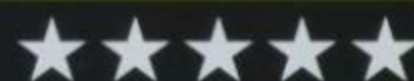


PLAY SAFE

Freestyle's class-exclusive SPACE Architecture™ (Side Protection And Cabin Enhancement) is comprised of advanced structural elements – including a hydroformed cross-car beam running between door frames to strengthen each bodyside.

In a side-impact collision, a bend in that beam triggers its deformation to divert crash forces under the seats and away from occupants.

Side-intrusion door beams extend across the 2 strongest areas of the door frame, and laser-welded side pillars help redirect crash forces underneath the seats. In the rear, structural elements meet a stringent, future federal crash standard, now.



Freestyle has earned the highest crash test safety rating from NHTSA in all 4 categories: driver frontal impact, passenger frontal impact, front-seat side impact and rear-seat side impact.



NAVIGATE NATIONWIDE

The available Navigation System (shown on Freestyle Limited) includes a large 6.5" color LCD screen and helpful features like Route Guidance, Automatic Re-Routing, an Address Book, and even a Valet Mode that can help you keep your travel plans private.

BEST-IN-CLASS FUEL ECONOMY, PLUS

EPA-estimated fuel economy for Freestyle with front-wheel drive (FWD) is 20 mpg city/27 hwy. For All-Wheel Drive (AWD), it's 19 mpg city/24 hwy. In addition, the Duratec 30 V6 requires no scheduled tune-up until 100,000 miles,* has a 150,000-mile drive belt, and its gaskets and seals are rated for 15 years of use. The CVT is maintenance-free for the first 60,000 miles. That's ease of ownership.

504 MILES TO E

*Under normal driving conditions with routine fluid and filter changes.

WHEELS



A - 17" 5-Spoke Bright-Aluminum Standard on SEL

B - 18" 5-Spoke Bright-Aluminum Standard on Limited

EXTERIOR COLORS



07 FREESTYLE

www.fordvehicles.com

ESCAPE IN A NEW WAY

IN ADDITION TO ITS BOLD NEW DESIGN, THE 2008 FORD ESCAPE GIVES YOU AN EXCITING DRIVE, ROOM FOR 5 AND MORE STANDARD SAFETY FEATURES THAN EVER. IT'S TIME TO GATHER YOUR FRIENDS AND HIT THE ROAD TO ADVENTURE IN THE NEW ESCAPE.

BOLD NEW STYLE OUTSIDE & IN

- Robust new stance includes chrome grille
- Available 17" wheels and tires, standard 16" wheels and tires
- New instrument panel design with centralized display area and standard auxiliary audio input jack for your personal MP3 player
- Available new earth-friendly seat fabric

GEARED FOR ADVENTURE

- Sporty 200-hp V6 engine available, efficient 153-hp I-4 standard
- Smoother, more refined ride thanks to retuned, fully independent suspension
- Optional new Cargo Package features cargo area cover, roof rack with crossbars and lockable hidden wet trunk

MORE STANDARD SAFETY FEATURES

- AdvanceTrac[®] with class-exclusive* RSC[®] (Roll Stability Control) now standard
- All 6 airbags now standard including the dual front airbags of our Personal Safety System,[®] front-seat side airbags and the side-curtain airbags of our Safety Canopy[™] System

*Small SUV class.



ESCAPE LIMITED IN BLACK PEARL SLATE METALLIC WITH AVAILABLE EQUIPMENT



GET OVER IT

The new Escape is naturally nimble. In fact, it features outstanding approach, breakover and departure angle capabilities, so you can drive up and over some obstacles that others will have to drive around.

THE NEW 08 ESCAPE

COMING IN EARLY 2007

www.fordvehicles.com



Each series includes the standard equipment of the previous series, except where additions/exceptions are noted.

ESCAPE XLS

Duratec 23-2.3L I-4 engine • 5-speed manual transmission or available 4-speed automatic
 • AdvanceTrac® with RSC® (Roll Stability Control)
 • Safety Canopy™ System • 16" styled-steel wheels
 • Chrome grille • Power windows, door locks and sideview mirrors • Remote keyless-entry system with 2 integrated key fobs • SecuriLock® passive anti-theft system • AM/FM stereo/single-CD player with MP3 capability • Cloth seats

ESCAPE XLT

4-speed automatic transmission • 16" cast-aluminum wheels • Automatic headlamps • Front fog lamps • Black roof-rack side rails • Privacy glass
 • Premium cloth seats with 6-way power driver seat
 • Cruise control • Front and rear floor mats

ESCAPE LIMITED

Duratec 30-3.0L V6 engine • 16" bright machined-aluminum wheels • Monochromatic exterior appearance • Premium leather-trimmed seats
 • Overhead console with dual storage bins • Auto-dimming rearview mirror • AM/FM stereo/6-disc in-dash CD changer with MP3 capability • Compass and outside temperature displays • Illuminated visor vanity mirrors • Keyless-entry keypad

QUIETEST RIDE EVER

This is the quietest Escape ever thanks to a new acoustic-laminate windshield, redesigned sideview mirrors and other refinements that help make it 15% quieter inside at highway speeds. To make the experience even more plush, opt for the Leather Comfort Package (shown at left), standard on Escape Limited. It includes a 6-way power driver seat (standard on XLT and Limited), sumptuous leather-trimmed seating and a leather-wrapped steering wheel. Go ahead, you've earned it.



ALL 6 AIRBAGS NOW STANDARD

The dual front airbags in our Personal Safety System® are now joined by front-seat side airbags and the side-curtain airbags of our Safety Canopy System as standard equipment on every Escape.



PLOT YOUR COURSE

The DVD-based Navigation System, paired with our 320-watt Audiophile® Sound System, is optional on Escape XLT and Limited.



AUDIO REVOLUTION

Plug your personal MP3 player into Escape's standard auxiliary audio input jack to play your own road trip sound track through the vehicle's sound system.



GRAB YOUR GEAR

Escape can carry up to 66.3 cu. ft. of cargo with both sides of the standard 60/40 split-folding rear seats folded down.



TOW YOUR TOYS

Escape XLT and Limited can tow up to 3500 lbs. when properly equipped with the optional Class II Trailer Tow Prep Package.

WHEELS

- A - 16" Styled-Steel
Standard on XLS
- B - 16" Aluminum
Standard on XLT; optional on XLS
- C - 16" Bright Machined-Aluminum
Standard on Limited
- D - 17" Chrome-Clad Aluminum
Optional on Limited and XLT with V6



EXTERIOR COLORS



THE NEW 08 ESCAPE

COMING IN EARLY 2007

www.fordvehicles.com

REDESIGNING GREEN

FORD ESCAPE HYBRID — EARTH'S FIRST FULL-HYBRID SUV — GETS A BOLD NEW LOOK INSIDE AND OUT FOR 2008 WHILE CONTINUING TO OFFER THE BEST OF BOTH WORLDS: OUTSTANDING FUEL EFFICIENCY AND SERIOUS CAPABILITY. SO YOU CAN HAVE YOUR HYBRID AND YOUR SUV TOO.

100% HYBRID

- Proven hybrid powertrain actually thrives in stop-and-go situations
- Operates in pure Electric Drive mode, using no gas and emitting virtually no harmful pollutants, at speeds up to 25 mph
- Meets California's strict emissions standards*
- Durable new earth-friendly seat fabric

100% SUV

- Robust new stance with bold chrome grille
- V6-like acceleration and refined ride
- Optional Intelligent 4WD System automatically adjusts to give you maximum grip
- Up to 66.0 cu. ft. of cargo space

*SULEV II and AT-PZEV are ratings approved by the California Air Resources Board. Vehicles sold in federally regulated states meet the Environmental Protection Agency's Tier 2/Bin (3) emissions standards.



START A NEW RECYCLING PLAN

The Escape Hybrid powertrain cleverly recharges itself, so there's never any need to plug it in. The 2.3L I-4 engine uses Atkinson-cycle combustion to make the most of each drop of gas. When you apply the brakes, the electric traction motor captures the kinetic energy that's created through a process called Regenerative Braking and uses it to recharge the battery pack. The 330-volt battery pack completes the circle by supplying energy to start the engine, to drive at low speeds, and to boost acceleration. If you're already into recycling, Escape Hybrid is a natural fit. And if you're not, there's no better way to start.



ESCAPE HYBRID IN KIWI GREEN METALLIC WITH AVAILABLE EQUIPMENT

HYBRID WARRANTY

Escape Hybrid is covered by an 8-year/100,000-mile Hybrid Limited Warranty** in addition to the 3-year/36,000-mile Bumper-to-Bumper Coverage, 5-year/50,000-mile Safety Restraint Coverage, and 5-year/unlimited-mile Corrosion (Perforation) Coverage.

**10-year/150,000-mile Hybrid Battery Limited Warranty in California, Maine, Massachusetts, New York and Vermont. See dealer for details.



KEEP YOURSELF IN THE KNOW

Escape Hybrid's optional Hybrid Energy/Navigation/Audiophile® System allows you to: track the powertrain's 3 main modes of operation (Hybrid Drive, Electric Drive and Idle Charging); find your way to destinations near and far; and jam out in 320-watt audio bliss.

UNIQUE POWER SOURCE



The 110-volt power outlet, available exclusively on Escape Hybrid, works like an AC outlet in your home. So you can take all sorts of essentials with you wherever you go: a laptop, radio or even a small TV!

*See your Owner's Guide for complete details.

NEW TAKE ON SUSTAINABILITY

Earth-friendly cloth-trimmed seating is standard on Escape Hybrid. This new fabric, made from 100% post-industrial materials, is durable, attractive, and just plain smart.



THE NEW 08 ESCAPE HYBRID

www.fordvehicles.com

TIME TO EXPLORE

NEVER SATISFIED TO VIEW THE WORLD FROM AN EASY CHAIR, EXPLORER OWNERS MAKE LIFE HAPPEN. THEY CHALLENGE THEMSELVES WITH UNIQUE GOALS. AND THEN SURPASS THEM. JUST LIKE EXPLORER.

BUILT TO DO MORE

- Remarkably stiff frame helps it deliver an even quieter ride than the previous generation
- Class-exclusive* 6-speed automatic transmission paired with the optional 4.6L 3-valve V8 engine

INNOVATIVE NEW OFFERINGS

- Standard audio input jack so you can listen to your MP3 player through any of Explorer's sound systems
- Available heated windshield
- Available power-deployable running boards

THE SAFEST EXPLORER EVER

- AdvanceTrac® with class-exclusive RSC® (Roll Stability Control)
- Class-exclusive Intelligent Safety System™
- Front-seat side airbags
- Safety Canopy™ System standard on Eddie Bauer and Limited



- 5-Star ratings in NHTSA's frontal and side-impact crash tests

*Truck-based Midsize SUV class.

BRING YOUR TOYS

Explorer 4x2 can tow up to 7290 lbs. when properly equipped, which leaves your recreational options wide open.



Explorer's optional V8 gives you 292 hp and 300 lb.-ft. of torque. That's more hp than you can get from Nissan Pathfinder or Toyota 4Runner. And it delivers more mpg on the highway than 4Runner's V8 engine.**

**Explorer 4x2 gets 21 mpg hwy.; 4x4 gets 20 mpg hwy. 4Runner 4x2 gets 20 mpg hwy.; 4x4 gets 19 mpg hwy. Based on 2007 EPA fuel economy estimates.



EXPLORER EDDIE BAUER IN DARK CHERRY METALLIC WITH OPTIONAL EQUIPMENT

07 EXPLORER

www.fordvehicles.com



EXPLORER XLT

4.0L SOHC V6 engine • 5-speed automatic transmission • 16" painted-aluminum wheels • Black wheel-lip moldings • 4-bar chrome grille • Fog lamps • Power sideview mirrors • Premium cloth front bucket seats with 2-way adjustable head restraints and driver's manual lumbar • Auxiliary audio input jack • Cruise control • Front and rear floor mats • Front-seat side airbags

Each series includes the standard equipment of the previous series, except where additions/exceptions are noted. Vehicles shown may contain optional equipment.



EXPLORER EDDIE BAUER

17" painted-aluminum wheels • Pueblo Gold running boards • Pueblo Gold lower front bumper, rear bumper and wheel-lip moldings • 3-bar chrome grille with nostrils • Silver roof side rails with black end caps • Automatic headlamps • Keyless-entry keypad • Leather-trimmed front bucket seats with 10-way power driver's seat including power lumbar and recline • Woodgrain accents • 4-line message center • Auto-dimming rearview mirror • Safety Canopy™ System



EXPLORER LIMITED

18" machined-aluminum wheels • Body-color bumpers and wheel-lip moldings • 4-bar chrome grille • Power, heated sideview mirrors with security approach lamps and chrome accents • Body-color running boards • Reverse Sensing System • Manual-fold 3rd-row seat • Audiophile® AM/FM stereo/6-disc in-dash CD changer with MP3 capability, subwoofer and 190 watts • Leather-trimmed, heated front bucket seats with 10-way power driver's seat, including power lumbar and recline and 6-way power passenger's seat • Unique woodgrain inserts • Center floor console with unique appearance for center finish and wrapped armrest • Secondary steering wheel-mounted audio and climate controls • Dual-zone Electronic Automatic Temperature Control • Auxiliary rear climate control



IRONMAN® PACKAGE

The Ironman Package is optional on XLT. It recognizes our relationship with the famed Ironman competition and contains: Black body-side cladding with rivet-design wheel-lip moldings • Unique 18" machined-aluminum wheels with painted pockets • Unique black grille • Headlamps with black-out treatment • Unique Black/Stone leather-trimmed seating with heated front seats and 10-way power driver's seat • Silver center stack bezel • All-weather rubber floor mats with Ironman logo



XLT APPEARANCE PACKAGE

Enhance your XLT with this optional package including: Body-color bumpers and wheel-lip moldings • Black running boards • 17" machined-aluminum wheels • Unique film on the interior door trim



COMPREHENSIVE COVERAGE

Now standard on Eddie Bauer and Limited, our patented Safety Canopy System features large, 2nd-generation side-curtain airbags that enhance protection for outboard-seated occupants in the 1st and 2nd rows.



ON THE LEVEL

Explorer's 7-passenger models feature a flatter loadfloor than Chevy TrailBlazer, Dodge Durango, Honda Pilot, Nissan Pathfinder or Toyota 4Runner. With the 2nd- and 3rd-row seats folded flat, this Explorer can carry up to 83.7 cu. ft. of cargo.

Cargo and load capacity limited by weight and weight distribution.



ADVANCETRAC® WITH RSC®

Our electronic stability enhancement system, AdvanceTrac with class-exclusive RSC (Roll Stability Control), actually measures what other systems can only estimate or ignore. Our system features a vehicle-roll motion sensor in addition to AdvanceTrac's Anti-lock Brake System (ABS), traction control and yaw control. RSC uses the sensor to directly measure the vehicle's roll-rate at least 100 times every second, which helps determine when and how the system will apply individual brakes and modify engine power to help keep all 4 wheels firmly planted.

Remember that even advanced technology cannot overcome the laws of physics. It's always possible to lose control of a vehicle due to inappropriate driver input for the conditions. For more information on AdvanceTrac with RSC, visit www.fordvehicles.com.



ADDITIONAL AMENITIES

The available Eddie Bauer Luxury Package includes your choice of leather-trimmed seating or two-tone leather-trimmed seating with Preferred Suede® inserts, plus: 10-way power, heated driver's seat with power lumbar and memory feature • 6-way power, heated front-passenger seat • Dual-zone Electronic Automatic Temperature Control • Power, heated sideview mirrors with security approach lamps • Secondary steering wheel-mounted audio and climate controls • Audiophile Sound System

Preferred Suede is a registered trademark of Milliken & Company.



POWER UP (OR DOWN)

The optional 50/50 split, fold-flat 3rd-row seat is available with your choice of PowerFold™ or manual-fold operation. For added comfort and convenience, the seat sits 1.75" higher than on the previous generation, improving forward vision.

WHEELS



- A - 16" Painted-Aluminum: Standard on XLT
- B - 17" Machined-Aluminum: Standard on XLT Appearance Package
- C - 17" Painted-Aluminum: Standard on Eddie Bauer
- D - 18" Machined-Aluminum with Painted Pockets: Standard on Ironman Package
- E - 18" Machined-Aluminum: Standard on Limited
- F - 18" Chrome-Clad Aluminum: Optional on Eddie Bauer and Limited

EXTERIOR COLORS



07 EXPLORER

RIGHT ON TRAC

THE 2007 SPORT TRAC IS *THE RIDE FOR HITTIN' THE TRAILS, DOMINATIN' THE SLOPES, HANGIN' IN RED ROCK COUNTRY, AND EVERY OTHER BOLD MOVE YOU DARE TO DREAM UP.*

ENERGETIC

- 42% more available power than before with first-ever V8 engine (292 hp and 300 lb.-ft. of torque)
- New smooth-riding Independent Rear Suspension (IRS)

STRONG

- 427% stiffer, fully boxed frame that contributes to its agile handling and quiet ride
- 26.7% larger, dent- and scratch-resistant composite cargo box with 3 integrated gear bins

VERSATILE

- New auxiliary audio input jack so you can listen to your MP3 player through any of Sport Trac's sound systems
- All-new, spacious interior
- Added flexibility of an available cargo cage bed extender and locking hard tonneau cover



- 5-Star ratings in NHTSA's frontal and side-impact crash tests
- AdvanceTrac® with class-exclusive* RSC® (Roll Stability Control)
- Class-exclusive Intelligent Safety System™
- Front-seat side airbags
- Safety Canopy™ System optional

*Truck-based Midsize SUV class.



MORE POWER TO YOU

Sport Trac's available power-sliding rear window opens to allow rear-seat passengers access to the cargo box, or just to get some air flowing.



SPORT TRAC LIMITED IN DARK BLUE PEARL METALLIC WITH OPTIONAL EQUIPMENT

GO FIND YOUR ADVENTURE

Breathe in deep. Feel the crisp mountain air as it fills you with a refreshing sense of clarity. Bask in the brilliant glow of the rising sun as it warms your skin. Watch it bring a rocky mountainside to life. Isn't it about time you left the everyday world behind? Adventure's out there – go find it in the 2007 Ford Sport Trac.

07 SPORT TRAC

www.fordvehicles.com





SPORT TRAC XLT

4.0L SOHC V6 engine • 5-speed automatic transmission • 16" cast-aluminum wheels • Black exterior accents • Power sideview mirrors with security approach lamps • Power windows • Auxiliary audio input jack • Cloth seats • Molded-rubber flooring • Heavy-duty berber floor mats • 2-line message center with outside temperature display and compass • Cruise control

Vehicles shown may contain optional equipment.



SPORT TRAC LIMITED

18" machined-aluminum wheels • Monochromatic exterior appearance • Fog lamps • Silver-painted roof side rails and step boards • Power sliding rear window* • 2-tone cloth seats with 6-way power driver's seat • Leather-wrapped steering wheel and floor shifter • Automatic headlamps

Limited includes the standard equipment of XLT, except where additions/exceptions are noted.

*Available on units produced on or after 10/2/06.



2 TONES + 10 WAYS

This new high-contrast, leather-trimmed seating is optional on Sport Trac Limited. It's packaged with the new 10-way power, heated driver's seat (including power-adjustable lumbar and recline) and a 4-way manual, heated passenger's seat, both of which include handy seatback map pockets.



TAKE CHARGE WITH EASE

The clean, modern design and intuitive layout of Sport Trac's new instrument panel puts you instantly in command. An available new DVD-based Navigation System with intersection programming actually calls out upcoming street names rather than just telling you in which direction to turn – that's one less thing for you to remember. And the new Dual-zone Electronic Automatic Temperature Control, available in the Limited Electronics Package, allows you and your front passenger to select different temperature settings, then automatically maintains them.



GEAR UP FOR GOOD TIMES

Sport Trac's composite cargo box holds up to 37.5 cu. ft. of gear. And with the optional cargo cage bed extender you can stow another 6+ cu. ft. with the tailgate open. The box includes a total of 10 integrated tie-down hooks and special notches inside that can help create tiered storage, perfect

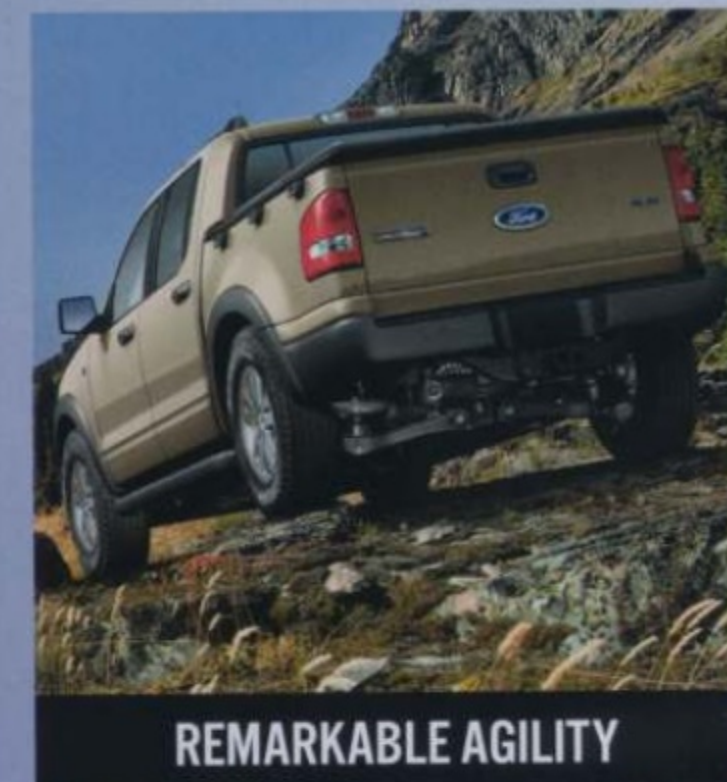
for transporting 4' x 8' sheets of plywood with the tailgate open. Got some smaller essentials to take along? Stow 'em below deck in Sport Trac's rugged new gear bins. All 3 bins feature weather-resistant lids and removable drain plugs.

Cargo and load capacity limited by weight and weight distribution.



3 SIMPLE STEPS

The optional, locking hard tonneau cover is hinged in the middle, so you can access just the front or back of the box, as needed. Want to access the entire thing? The tonneau cover can be removed altogether in just 3 steps.



REMARKABLE AGILITY

The new Independent Rear Suspension (IRS) gives Sport Trac 8.8" of combined wheel travel (jounce + rebound) in the back, which contributes to its extreme flexibility.



GET SERIOUS ABOUT SAFETY

New for 2007, front-seat side airbags and our Intelligent Safety System™ (ISS) are both standard. The ISS processes information from a suite of sophisticated sensors and adjusts the performance of Sport Trac's adaptive front airbags, adaptive load-limiting front safety belt retractors, and adaptive steering column to enhance your protection in

the event of certain frontal collisions. To enhance protection for outboard-seated occupants in both rows, add our patented Safety Canopy™ System. This optional system features larger, 2nd-generation side-curtain airbags and a rollover sensor that directs their deployment in certain types of side-impact collisions or rollover events.

WHEELS



A - 16" Cast-Aluminum Standard on XLT
 B - 17" Cast-Aluminum Included in XLT Appearance Package
 C - 18" Machined-Aluminum Standard on Limited

07 SPORT TRAC

EXTERIOR COLORS



www.fordvehicles.com

EXPAND YOUR HORIZONS

BUILT TO ENCOURAGE THE ADVENTUROUS NATURE OF YOUR FAMILY, THE NEW EXPEDITION IS READY FOR EVERYTHING FROM LAST-MINUTE HIKES TO WEEKENDS AT THE LAKE.

FULL-SIZED COMFORT

- Available seating configurations for 5 to 8 passengers
- 108.3-cu.-ft. maximum cargo volume
- Available class-exclusive* PowerFold™ 3rd-row seat

POWERFUL CAPABILITY

- 5.4L 3-valve Triton® V8 engine supplies 300 hp and 365 lb.-ft. of torque
- New class-exclusive 6-speed automatic transmission
- 9200-lb. maximum towing capacity**



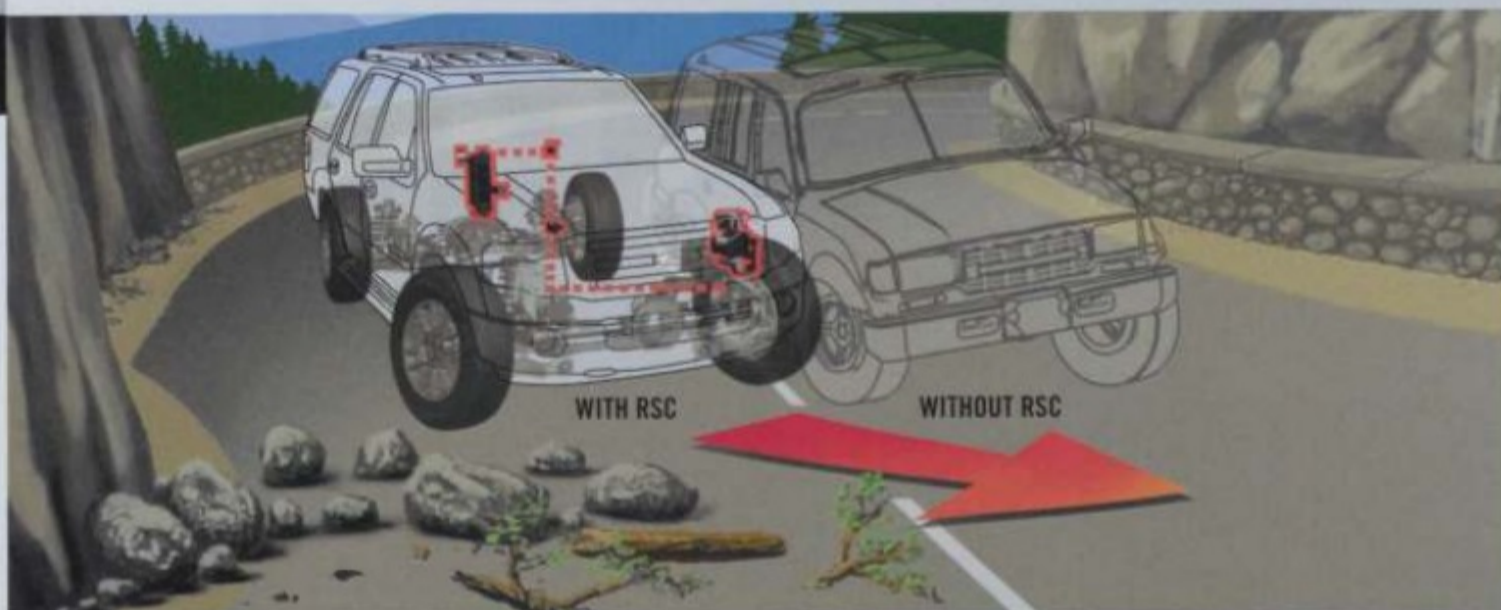
- 5-Star ratings in NHTSA's frontal crash tests
- Safest Expedition ever†
- AdvanceTrac® with RSC® (Roll Stability Control) now standard
- Safety Canopy™ System and front-seat side airbags now standard

*Full-size SUV class.
**4x2 model, when properly equipped with the optional Heavy-Duty Trailer Tow Package.
†Based on internal Ford safety testing results.

EXPEDITION LIMITED IN BLACK WITH AVAILABLE EQUIPMENT

BUILT-IN STABILITY

AdvanceTrac with RSC can help in many real-world situations, such as when you're making an emergency maneuver to avoid something in the road; driving on slippery surfaces like snowy, muddy, wet or gravel roads; or traveling on uneven surfaces, such as in construction zones.



Expedition's available new power liftgate raises and lowers with the push of a button on your remote keyless-entry key fob. It doesn't get any easier than this.

THE NEW 07 EXPEDITION

www.fordvehicles.com



EXPEDITION XLT

5.4L 3-valve Triton® V8 engine • 6-speed automatic transmission • 17" aluminum wheels • Black lower bodyside moldings and bumpers • Chrome door handles • Fog lamps • Black, power sideview mirrors with security approach lamps • Black roof side rails • Black running boards • AM/FM stereo with single-CD and MP3 capability • 1st-row captain's chairs with 6-way power driver's seat with manual lumbar • 2nd-row 40/20/40 split bench seat with CenterSlide™ feature • Illuminated entry with theater-dimming feature

Each series includes the standard equipment of the previous series, except where additions/exceptions are noted.

Vehicles shown may contain optional equipment.



EXPEDITION EDDIE BAUER

17" machined-aluminum wheels • Pueblo Gold lower bodyside moldings, wheel-lip moldings and bumpers • Pueblo Gold running boards • Black, power, heated sideview mirrors with memory, security approach lamps and integrated turn signals • Two-tone leather-trimmed seats with 1st-row captain's chairs • Driver's-seat memory feature • Dual-zone Electronic Automatic Temperature Control • Message center • Leather-wrapped steering wheel with secondary controls • Audiophile® Sound System with AM/FM stereo and 6-disc in-dash CD changer with MP3 capability



EXPEDITION LIMITED

18" chrome-clad wheels • Monochromatic appearance • Chrome exhaust tip • Chrome roof side rails • Body-color, power-folding, heated sideview mirrors with memory, security approach lamps and integrated turn signals • Headlamps with blackout treatment • 10-way power-adjustable heated and cooled 1st-row leather-trimmed low-back bucket seats including power lumbar and power recline

EXPAND YOUR PULL

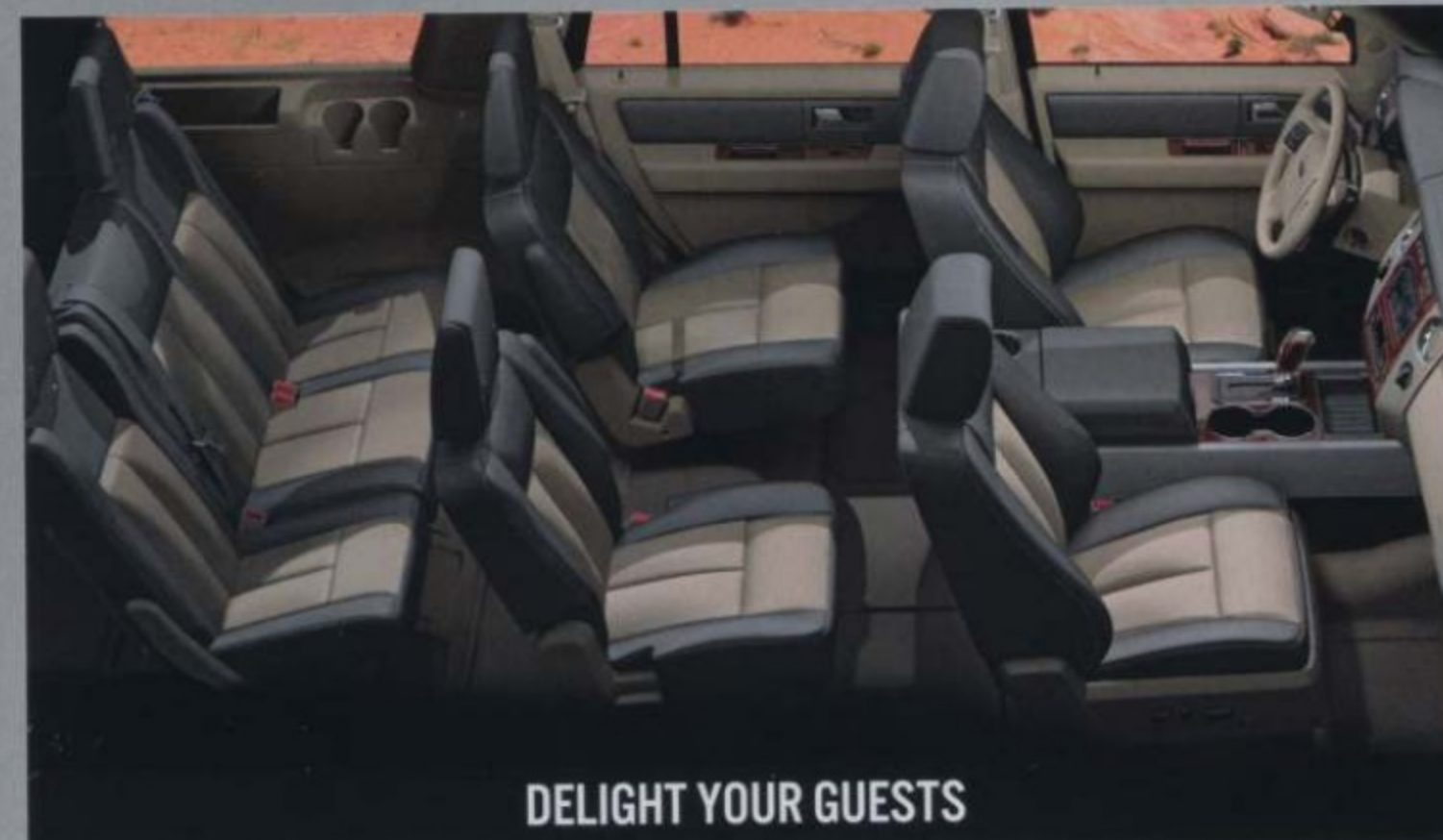
New for 2007, the available towing capacity of Expedition's V8 engine has increased to a maximum of 9200 lbs.* That's a full 1000 lbs. more than a Chevrolet Tahoe can manage. Optional load-leveling rear air suspension helps deliver a smooth ride and confident handling regardless of the vehicle load.

Cargo and load capacity limited by weight and weight distribution.

*4x2 model, when properly equipped.



EXTERIOR COLORS



DELIGHT YOUR GUESTS

New for 2007, Expedition's seat structures have been redesigned to help increase rider comfort on short and long trips alike. Supportive captain's chairs are now standard in the 1st row, while class-exclusive heated and cooled front seats are standard on Limited and optional on Eddie Bauer.

CINEMA ON THE GO



Expedition's optional Rear-Seat DVD Entertainment System features a new, larger 8" color LCD screen that'll keep them happily occupied for hours. The system also includes a remote control and 2 sets of wireless headphones.

WITHIN EASY REACH



Expedition's class-exclusive CenterSlide feature is the center section of the standard 2nd-row 40/20/40 split-folding seat. It is especially helpful if you have a little one secured in a child seat, since it enables you to pull the 20% portion of the seat forward almost 11" for easy access from the 1st row.

SAFEST EXPEDITION EVER**



New standards like the front-seat side airbags and our first-in-class Safety Canopy™ System join Expedition's class-exclusive Personal Safety System.® The Safety Canopy System now features side-curtain airbags that enhance protection for all 3 rows of outboard-seated occupants in certain types of side-impact events.

**Based on internal Ford safety testing results.

WHEELS



- A - 17" Aluminum Standard on XLT
- B - 17" Machined-Aluminum Standard on Eddie Bauer
- C - 18" Chrome-Clad Aluminum Standard on Limited
- D - 18" Machined-Aluminum Optional on XLT and Eddie Bauer
- E - 20" Chrome-Clad Aluminum Optional on Eddie Bauer and Limited

THE NEW

07 EXPEDITION

www.fordvehicles.com

EXTEND YOUR OPTIONS

THE ALL-NEW EXPEDITION EL GIVES YOU ALL THE OUTSTANDING FEATURES OF THE NEW EXPEDITION, PLUS 130% MORE CARGO SPACE BEHIND THE 3RD-ROW SEAT.

FULL-SIZED COMFORT

- Available seating configurations for 7 or 8 passengers
- 130.8-cu.-ft. maximum cargo volume

POWERFUL CAPABILITY

- 5.4L 3-valve Triton® V8 engine supplies 300 hp and 365 lb.-ft. of torque
- New class-exclusive* 6-speed automatic transmission
- 9000-lb. maximum towing capacity**



- 5-Star ratings in NHTSA's frontal crash tests
- AdvanceTrac® with RSC® (Roll Stability Control)
- Safety Canopy™ System and front-seat side airbags

*Full-size Extended-length SUV class.
**4x2 model, when properly equipped with the optional Heavy-Duty Trailer Tow Package.

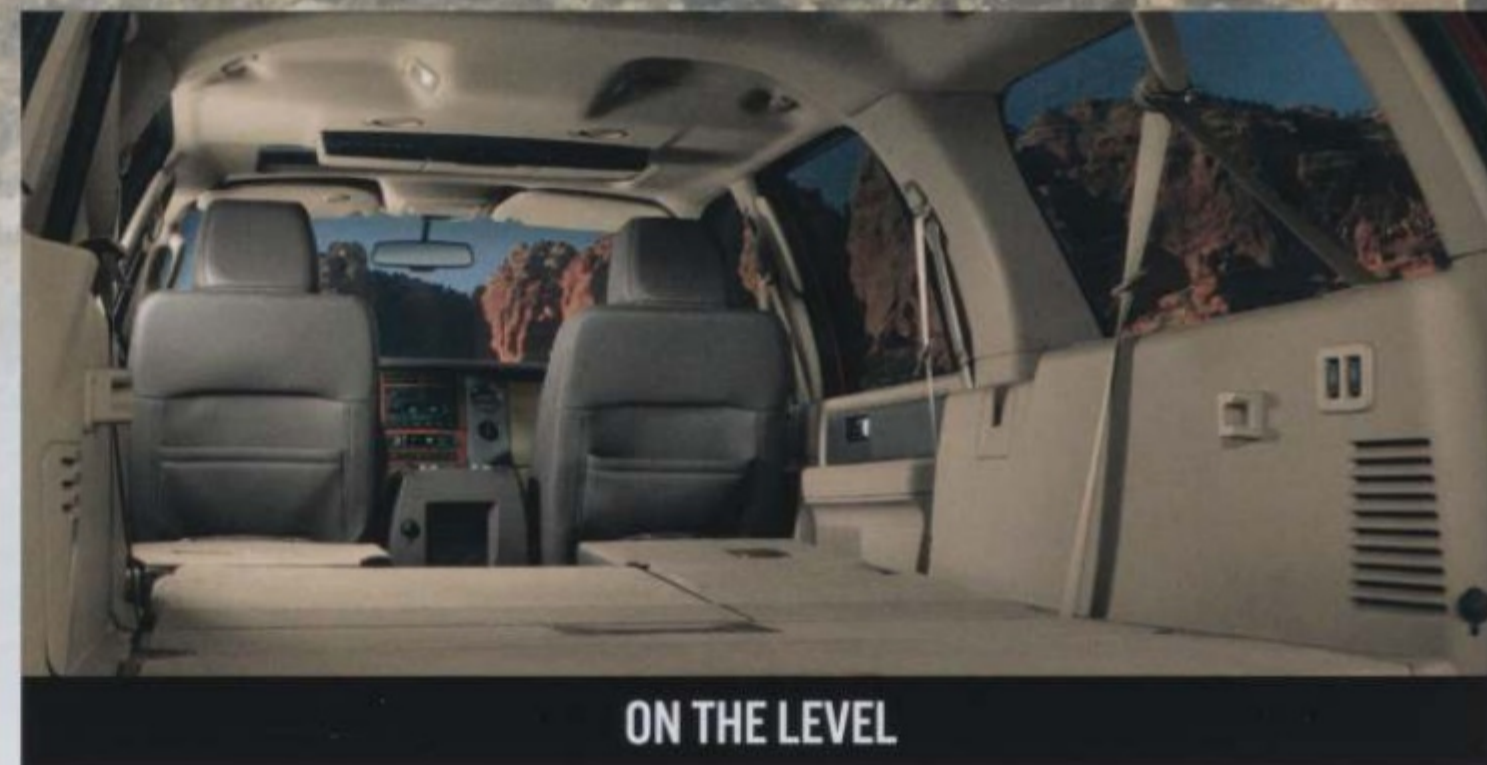
EXTERIOR COLORS

Expedition EL is available in your choice of 3 models: XLT, Eddie Bauer and Limited.

Oxford White	Carbon
Pueblo Gold	Black
Redfire	White Sand Tri-Coat
Dark Blue Pearl	Dark Copper
Silver Birch	



EXPEDITION EL EDDIE BAUER IN DARK COPPER METALLIC WITH AVAILABLE EQUIPMENT



ON THE LEVEL

With the 2nd- and 3rd-row seats folded flat onto the floor, Expedition EL offers you a full 130.8 cu. ft. of cargo space, in addition to a level loadfloor that makes it easy to transport long, flat objects. You'll thank us after your first trip to the home improvement store.

Cargo and load capacity limited by weight and weight distribution.



SMART PACKING

This standard versatile new cargo organizer helps you keep all that extra space behind Expedition EL's 3rd-row seat neat and tidy. You can use the simple panel divider to split the space vertically or horizontally, creating either 2 distinct cargo areas or 2 tiers of shelf-like storage, whichever your cargo requires.



POWER YOUR POSSIBILITIES

Expedition EL's available PowerFold™ 3rd-row seat, standard on Eddie Bauer and Limited, opens up 85.5 cu. ft. of cargo space at the push of a button. Chevrolet Suburban and GMC Yukon don't even offer a power-folding 3rd row, so their drivers have to physically remove the seat before they can utilize a similar cargo area. You could be gone before they even start loading.



AUDIO REVOLUTION

Since the personal MP3 player is *the* hot gadget these days, we've equipped every Expedition EL sound system with a new auxiliary audio input jack to accommodate yours. Of course, all the CD players and changers still have the ability to read MP3-formatted CDs as well.

THE NEW 07 EXPEDITION EL

www.fordvehicles.com



THE NEW 2008 ESCAPE & ESCAPE HYBRID

Category Compact SUV and Hybrid SUV
Models XLS, XLT, Limited, Hybrid
Special Packages Limited Luxury, Chrome Appearance, Trailer Tow Prep, Hybrid Premium, Cargo, Convenience
Body Style 5-door SUV
Seating Capacity 5
Engines Duratec 23-2.3L I-4, Duratec 30-3.0L V6, 2.3L I-4 Atkinson-cycle
Transmissions 5-speed manual, 4-speed automatic, eCVT (electronic Continuously Variable Transmission)
Drivetrains FWD, 4WD
Safety Highlights AdvanceTrac® w/RSC® (on gas-powered Escape models), Safety Canopy™ System, front-seat side airbags
Key Attributes On-road confidence, off-road capability



SPORT TRAC

Category Sport Utility Truck
Models XLT, Limited
Special Packages XLT Appearance, Convenience, Limited Electronics, Limited Chrome, Class III/IV Trailer Tow
Body Style 4-door Sport Utility Truck
Seating Capacity 5
Engines 4.0L SOHC V6, 4.6L 3v V8
Transmissions 5-speed automatic, 6-speed automatic
Drivetrains 4x2, 4x4
Safety Highlights Standard AdvanceTrac w/RSC, standard front-seat side airbags, available Safety Canopy System
Key Attribute Flexibility of pickup-style bed



THE ALL-NEW EDGE

Category Crossover Utility Vehicle (CUV)
Models SE, SEL, SEL Plus
Special Packages Premium, Seating Flexibility
Body Style 5-door CUV
Seating Capacity 5
Engine 3.5L Duratec 35 V6
Transmission 6-speed automatic
Drivetrains FWD, AWD
Safety Highlights Standard AdvanceTrac with RSC, standard Safety Canopy System
Key Attributes Bold design and flexibility; sporty handling and energetic performance



BOLDMOVES



EXPLORER

Category Midsize SUV
Models XLT, Eddie Bauer, Limited
Special Packages Convenience, Eddie Bauer Luxury, Ironman® Ultimate Convenience, XLT Comfort, XLT Appearance, Class III/IV Trailer Tow
Body Style 5-door SUV
Seating Capacities 5, 6, 7
Engines 4.0L SOHC V6, 4.6L 3v V8
Transmissions 5-speed automatic, 6-speed automatic
Drivetrains 4x2, 4x4
Safety Highlights Standard AdvanceTrac w/RSC, Intelligent Safety System™
Key Attributes Safest Explorer ever; cargo and towing capability



THE NEW EXPEDITION & ALL-NEW EXPEDITION EL

Category Full-size and Full-size Extended-length SUVs
Models XLT, Eddie Bauer, Limited
Special Packages Convenience, XLT Comfort, 4x4 Off-Road, Heavy-Duty Trailer Tow
Body Style 5-door SUV
Seating Capacities 5, 6, 7, 8
Engine 5.4L SOHC 3v V8
Transmission 6-speed automatic
Drivetrains 4x2, 4x4
Safety Highlights Standard AdvanceTrac w/RSC, standard Safety Canopy System
Key Attributes Cargo and towing capability; functionality/versatility of 3rd row



FREESTYLE

Category CUV
Models SEL, Limited
Special Packages Convenience, Power
Body Style 5-door CUV
Seating Capacities 6, 7
Engine 3.0L Duratec 30 V6
Transmission Continuously Variable Transmission (CVT)
Drivetrains FWD, AWD
Safety Highlights NHTSA 5 Stars in all 4 categories; IIHS highest front, side and rear crash protection ratings; standard Safety Canopy System; standard front-seat side airbags
Key Attributes Command Seating™; best-in-class fuel economy



New Vehicle Limited Warranty

We want your Ford ownership experience to be the best it can be. So under this warranty, your new vehicle comes with 3-year/36,000-mile Bumper-to-Bumper Coverage, 5-year/50,000-mile Safety Restraint Coverage, and 5-year/unlimited-mile Corrosion (Perforation) Coverage – all with no deductible. Please ask your Ford Dealer for a copy of this limited warranty.

For more assurance: There's now a 5-year/60,000-mile powertrain limited warranty that's fully transferable with no deductible – diesel engine warranty is 5 years/100,000 miles – on select engine components. Plus, Roadside Assistance is extended to 5 years or 60,000 miles, so you have the security of knowing that help may be only a phone call away should you run out of fuel, lock yourself out of the vehicle, or need towing. Your Ford Dealer can provide complete details on all of these advantages.

Comparisons based on 2007 competitive models, publicly available information and Ford certification data at time of printing. Some features discussed may be optional. Vehicles shown may contain optional equipment. Features shown may be offered only in combination with other options or subject to additional ordering requirements or limitations. Dimensions shown may vary due to optional features and/or production variability. Following publication of the catalog, certain changes in standard equipment, options and the like, or product delays may have occurred which would not be included in these pages. Your Ford Dealer is the best source for up-to-date information. Ford Division reserves the right to change product specifications at any time without incurring obligations.

Always wear your safety belt and secure children in the rear seat.

07 SUV and CROSSOVER

PLUS THE NEW 08 ESCAPE & ESCAPE HYBRID



MUSTANG

Category Pony Car
Models V6 Deluxe, V6 Premium, GT Deluxe, GT Premium, Shelby GT500
Special Packages GT California Special, GT Appearance, Comfort, V6 Pony, Interior Upgrade, Premier Trim With Color Accent, Exterior Sport Appearance, Sport Appearance With Color Accent
Body Styles Coupe, convertible
Seating Capacity 4
Engines 4.0L SOHC V6, 4.6L V8, 5.4L super-charged intercooled V8
Transmissions 5-speed manual, 5-speed auto, TREMEC 6-speed manual
Drivetrain RWD
Safety Highlight NHTSA 5 Stars – frontal crash categories (Mustang coupe)
Key Attributes Looks, and it cooks



FIVE HUNDRED

Category Commanding Full-Size
Models SEL, Limited
Special Packages Chrome, Interior Power, Convenience
Body Style 4-door sedan
Seating Capacity 5
Engine 3.0L Duratec V6
Transmissions 6-speed auto, CVT (with AWD)
Drivetrains FWD, AWD
Safety Highlights NHTSA 5 Stars – all crash categories; highest side, rear and frontal offset crash protection ratings from IIHS; class-exclusive SPACE Architecture™ (Side Protection And Cabin Enhancement)
Key Attributes Comfortable, confident, convenient, and now optional with SIRIUS Satellite Radio, DVD Family Entertainment Center and DVD Navigation System



FUSION

Category Unconventional Midsize
Models S, SE, SEL
Special Package I-4 SE Appearance
Body Style 4-door sedan
Seating Capacity 5
Engines 2.3L Duratec I-4, 3.0L Duratec V6
Transmissions 5-speed manual, 5-speed auto, 6-speed auto
Drivetrains FWD, AWD
Safety Highlights NHTSA 5 Stars – front-seat side crash category; Fusion now features 6 airbags as standard equipment
Key Attributes Head-turning styling, cornering agility, an expansive body-hugging interior, and contrast stitching on the available leather-trimmed seats



CROWN VICTORIA

Category Traditional Large
Models Crown Victoria, LX
Special Packages LX Premier Sport Handling And Performance, LX Premier Group, Handling And Performance
Body Style 4-door sedan
Seating Capacities 5, 6
Engine 4.6L V8
Transmission 4-speed auto
Drivetrain RWD
Safety Highlights NHTSA 5 Stars** – all crash categories and for rollover resistance; highest frontal offset crash protection rating from IIHS
Key Attributes Smooth ride, luxurious amenities, and solid body-on-frame build – the only mass-produced American passenger car designed this way

**With optional side airbags.



FOCUS

Category Efficient Compact
Models S, SE, SES, ST
Special Packages Street Appearance, SE Sport Group, Convenience, Safety, Weather, Interior Upgrade
Body Styles 3-door hatch, 4-door sedan, 5-door wagon, 5-door hatch
Seating Capacity 5
Engines 2.0L Duratec, 2.0L Duratec 20E PZEV, 2.3L Duratec
Transmissions 5-speed manual, 4-speed auto
Drivetrain FWD
Safety Highlight NHTSA 5 Stars – driver, frontal crash category*
Key Attributes Rates well above average in EPA Green Vehicle Guide, and handles with European finesse

*4-door sedan.



FREESTAR

Category Versatile Minivan
Models SE, SEL, Limited
Special Packages SE Appearance, Class II Trailer Tow, Premium, Memory
Body Style Van
Seating Capacity 7
Engines 3.9L OHV V6, 4.2L OHV V6
Transmission 4-speed auto
Drivetrain FWD
Safety Highlights NHTSA 5 Stars – frontal crash categories and rear-seat side crash category; AdvanceTrac® Electronic Stability Enhancement System is optional
Key Attribute Innovative, rear-facing 3rd-row Tailgate Bench Seat™ – simply open the rear liftgate and drop the bench backward†

†Rear-facing 3rd-row seat is not intended for passenger seating while vehicle is in motion.



RANGER

Category Compact Pickup
Models XL, STX, XLT, SPORT, FX4 OFF-ROAD, FX4 LEVEL II
Special Package TREMOR Wheels & Tunes
Body Styles Regular Cab, SuperCab: 2-Door and 4-Door
Seating Capacities 3, 4, 5
Engines 2.3L I-4, 3.0L V6 or 4.0L V6
Transmissions 5-speed manual, 5-speed automatic
Drivetrains 4x2 or 4x4
Safety Highlights Personal Safety System®, Tire Pressure Monitoring System
Key Attributes Best Pickup Fuel Economy,†† available 7-ft. box

††4x2 with 2.3L I-4 engine and 5-speed manual transmission. Based on EPA-estimated mileage for 2007 Ranger vs. 2007 model year pickups.



E-SERIES

Category Full-Size Vans, Wagons, Cutaways and Stripped Chassis
Models XL, XLT, Chateau Wagon
Special Packages Racks & Bins (Van), Center Aisle Seating, DVD player
Body Styles Van, Wagon, Cutaway
Seating Capacities 2, 5, 7, 8, 11, 12, 14, 15
Engines 4.6L V8, 5.4L V8, 6.8L V10, 6.0L V8 Turbo Diesel
Transmissions 4-speed automatic, 5-speed automatic or 5-speed automatic with Tow/Haul Mode
Drivetrain RWD
Safety Highlight Class-exclusive AdvanceTrac® with RSC® (Roll Stability Control) (Limited availability)
Key Attributes Sales leader 28 years running; capacity and versatility



F-150

Category Full-Size Pickup Under 8500 lbs. GVWR
Models XL, STX, XLT, FX4 OFF-ROAD, LARIAT
Special Packages FX2 SPORT, KING RANCH®, Ford Harley-Davidson™ F-150, Chrome, DVD player
Body Styles Regular Cab, SuperCab, SuperCrew
Seating Capacities 3, 5, 6
Engines 4.2L V6, 4.6L Triton® V8, 5.4L 3-valve Triton V8, E85 FFV 5.4L 3-valve Triton V8
Transmissions 5-speed manual, 4-speed automatic
Drivetrains 4x2 or 4x4
Safety Highlights NHTSA 5-Star Frontal, Personal Safety System

†Properly equipped.



2008 F-SERIES SUPER DUTY®

Category Full-Size Pickup Over 8500 lbs. up to 16,000 lbs. GVWR
Models XL, XLT, FX4, LARIAT
Special Packages 4x4 OFF-ROAD, XLT SPORT, KING RANCH
Body Styles Regular Cab, SuperCab, Crew Cab
Seating Capacities 3, 4, 5, 6
Engines 5.4L V8 gas, 6.8L V10 gas or 6.4L V8 Turbo Diesel
Transmissions 6-speed manual, 5-speed automatic with Tow/Haul Mode
Drivetrains 4x2 or 4x4, SRW, DRW
Safety Highlight Dual-front airbags
Key Attributes Best-in-class towing and payload;‡‡ TowCommand Integrated Trailer Brake Controller option, Tailgate Step option, stowable bed extender option, PowerScope™ power-telescoping/folding trailer tow mirrors option

‡‡Properly equipped.



2008 F-SERIES CHASSIS CAB, 2007 F-650/F-750 AND FORD LCF

No matter what your requirements, there's a Built Ford Tough Commercial Truck ready to fulfill them. From the flexibility of F-350/F-450/F-550 Chassis Cabs to best-in-class‡ maneuverability of Ford LCF to the mega capacities of F-650/F-750 Super Duty, Ford's got you covered. Plus, Ford Commercial Trucks are serviced by a coast-to-coast network of more than 900 Ford Certified Truck Dealers. They'll help keep your trucks and business rolling with certified mechanics and ready access to uptime-critical parts, which means less downtime and more productivity for you. America's best-selling line of trucks just keeps getting better. So choose your truck, choose your equipment, and get the job done.

‡Class 4 Tilt-Cab Diesels, excluding Ford joint-venture members.

07 CAR

07 TRUCK

PLUS THE NEW 08 F-SERIES SUPER DUTY



BOLDMOVES

07 SUV and CROSSOVER

PLUS THE NEW 08 ESCAPE & ESCAPE HYBRID

www.fordvehicles.com

©2006 Ford Motor Company 07-2AS-SUVCV
Litho in USA on recycled paper (20% post consumer)