

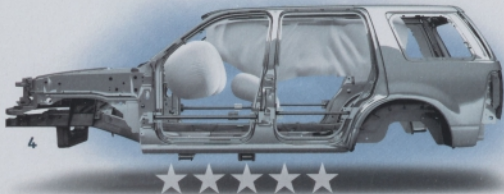
2007

MERCURY MOUNTAINEER



MERCURY | NEW DOORS OPENED

YOU DO IT ALL WITH STYLE AND GRACE. PRECISELY WHY MERCURY MOUNTAINEER WILL BE YOUR TREASURED COMPANION. ITS SMOOTH RIDE AND PROGRESSIVE INTERIOR OFFER HIGH LEVELS OF MODERN STYLE. ADVANCETRAC® WITH RSC® (ROLL STABILITY CONTROL) AND THE INTELLIGENT SAFETY SYSTEM™ SUPPLY POISE AND GRACE WHEN NEEDED. THIS IS ONE SUV THAT DOES IT ALL, MUCH LIKE YOU.



- 1 AVAILABLE CLASS-EXCLUSIVE* POWERFOLD™ 3RD-ROW SEAT
- 2 SEATING CONFIGURATIONS FOR 5, 6 OR 7 PASSENGERS
- 3 OPTIONAL REAR-SEAT DVD ENTERTAINMENT SYSTEM WITH 8" SCREEN
- 4 THE MOST STANDARD SAFETY FEATURES IN ITS CLASS

"What an absolutely beautiful-looking vehicle, inside and out," says *AutoWeek*. For proof, just begin with the standard **leather-trimmed, 10-way power driver's seat** with power lumbar and recline adjustments. On Mountaineer Premier, seating is available in your choice of stunning Charcoal Black (shown above) or Camel with Sand Embossed Preferred Suede® inserts.

In the 2nd row, a standard 60/40 split seat completes the interior for 5-passenger models. For 6-passenger seating, select the available quad bucket seats with 2nd-row center console and 3rd-row 50/50 split-folding seat. And if you need seating for 7, Mountaineer can be outfitted with a 60/40 split-folding seat in the 2nd row and 50/50 split-folding seat behind that.

Additional amenities include available power-deployable running boards, an optional Navigation System (shown right), an available 4.6L 3-valve V-8 engine with 292 hp and 300 lb.-ft. of torque, and available SIRIUS Satellite Radio³ with a courtesy 6-month subscription to SIRIUS.



CHARCOAL BLACK INTERIOR: MOUNTAINEER PREMIER WITH AVAILABLE EQUIPMENT

FOR MORE INFORMATION, PLEASE VISIT

WWW.MERCURYVEHICLES.COM

OR DETACH AND MAIL THIS CARD.

YES, please send me the product info I'm looking for. And, if any great offers come up that Mercury and the local dealer think would be of interest, send those along, too. Okay, now all you have to do is fill in the blanks below.

First Name _____

Last Name _____

Address _____

City _____

State _____

ZIP Code _____

E-mail: Please provide your e-mail address to receive product information, offers and incentives by e-mail from Mercury and the local dealer.

Telephone (including area code) _____

Please send me information on the following vehicle(s). You may choose up to two.

- Grand Marquis
- Mariner
- Mariner Hybrid
- Milan
- Montego
- Monterey
- Mountaineer


We would like to provide you with the appropriate incentive information. How do you plan to obtain your next vehicle?

- Purchase
- Lease

When do you plan to acquire your next vehicle?

- 0-30 days
- 1-3 months
- 4-6 months
- 7+ months
- No Definite Plans

320A/2/4/8

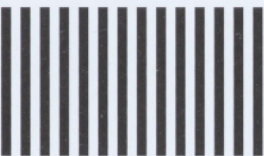
 **MERCURY** NEW DOORS OPENED
CAMER2C100A



MERCURY | NEW DOORS OPENED

mercuryvehicles.com

NO POSTAGE
NECESSARY
IF MAILED
IN THE
UNITED STATES



BUSINESS REPLY MAIL

FIRST-CLASS MAIL PERMIT NO 25

DEARBORN MI

POSTAGE WILL BE PAID BY ADDRESSEE

MERCURY PROGRAM HEADQUARTERS
PO BOX 1483
DEARBORN MI 48121-9700



SPECIFICATIONS

MOUNTAINEER STANDARD FEATURES

POWERTRAIN/FUNCTIONALITY

4.0L 2-valve SOHC V-6 engine with 5-speed automatic transmission
4-wheel power disc brakes with Anti-lock Brake System (ABS)
Class II trailer hitch receiver with 4-pin electrical connector and 3500-lb. towing capacity
Front and rear independent suspensions

EXTERIOR

17" machined-aluminum wheels with P245/65R17 all-terrain BSW tires
Power, sail-mounted sideview mirrors with security approach lamps
Speed-sensitive, intermittent windshield wipers

INTERIOR

1st-row leather-trimmed bucket seats with perforated-leather inserts and 10-way power driver's seat, including power lumbar and recline (vinyl 3rd row, if equipped)

2nd-row leather-trimmed fold-flat 60/40 split bench seat with recline, 2-way adjustable head restraints, and integrated seat restraints for middle passenger

Auto-dimming rearview mirror

Color-keyed leather-wrapped steering wheel with secondary audio and climate controls, and cruise control

Dual-zone Electronic Automatic Temperature Control

Power door locks and power windows with one-touch-down driver's-side feature

Premium AM/FM stereo/single-CD player with MP3 and SIRIUS Satellite Radio capabilities, and audio input jack (located in 1st-row center console)

Remote keyless-entry system with driver's-side keyless-entry keypad, 2 key fobs, panic alarm button and illuminated-entry system

Tilt steering column

SECURITY/SAFETY

Intelligent Safety System™ with adaptive steering column; driver and front-passenger adaptive load-limiting retractors; driver and front-passenger airbags* with adaptive venting and front-passenger adaptive tether; driver and front-passenger front-seat side airbags* and Front-Passenger Sensing System

AdvanceTrac® with RSC® (Roll Stability Control)

Lower anchors and tether anchors for child-safety seats (LATCH) for all 2nd-row seating positions, and tether anchor for 3rd-row center position

Safety belts – 3-point safety belts for all seating positions

Safety Canopy™ System with side-curtain airbags* for 1st- and 2nd-row passengers, with rollover sensor

SecuriLock® passive anti-theft system

Tire Pressure Monitoring System

MOUNTAINEER PREMIER STANDARD FEATURES

All Mountaineer content, plus:

EXTERIOR

18" satin-aluminum wheels with P235/65R18 all-season BSW tires
Reverse Sensing System

INTERIOR

1st-row leather-trimmed heated bucket seats with Preferred Suede® inserts, 10-way power driver's seat including power lumbar, recline and memory, and 6-way power passenger's seat with manual lumbar (vinyl 3rd row, if equipped)

3rd-row PowerFold™ 50/50 split bench seat

Audiophile® Sound System with AM/FM stereo, 6-disc in-dash CD changer with MP3 and SIRIUS Satellite Radio capabilities, audio input jack, 8" subwoofer, and 190 peak watts of power

Heated fronts seats

Universal Garage Door Opener

AVAILABLE EQUIPMENT

MOUNTAINEER – MOUNTAINEER PREMIER

- 3rd-row 50/50 split bench seat
- 3rd-row PowerFold 50/50 split bench seat
- 4.6L 3-valve SOHC V-8 engine with 6-speed automatic transmission
- Audiophile Sound System with AM/FM stereo, 6-disc in-dash CD changer with MP3 and SIRIUS Satellite Radio capabilities, audio input jack, 8" subwoofer, and 190 peak watts of power
- Full-time All-Wheel Drive (AWD)
- Heated windshield (not available with Navigation System)
- Navigation System – Includes Audiophile Sound System (not available in Alaska)
- Power-deployable running boards extend and retract automatically with door usage, and can also be set to remain extended or retracted
- Power moonroof with mini-overhead console**
- Premier Navigation and Moonroof Package
- Quad bucket seating† with recline-and-fold feature, plus 2nd-row center console with 2 cupholders
- Rear-Seat DVD Entertainment System
- SIRIUS Satellite Digital Audio Receiver System†
- Trailer Tow Upgrade Package

*Always wear your safety belt and secure children in the rear seat. **Includes medium overhead console when optioned with Auxiliary Climate Control. †Requires 3rd row. ‡See your Lincoln Mercury Dealer or contact SIRIUS at 1-888-539-9216 for more information.

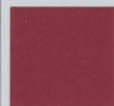
Preferred Suede is a registered trademark of Milliken G Company. Audiophile is a registered trademark of Audiophile, Inc.

*SIRIUS® and related marks are trademarks of SIRIUS Satellite Radio Inc.

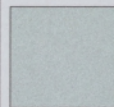
***New for 2007.** Mercury uses clearcoat paint for beauty and protection. All exterior paints are Metallic except for Oxford White and Black. Colors are representative only.

Comparisons based on 2006 competitive models (Truck-based Midsize SUV class), publicly available information and Ford certification data at time of printing. Some features discussed may be optional. Vehicles shown may contain optional equipment. Features shown may be offered only in combination with other options or subject to additional ordering requirements or limitations. Dimensions shown may vary due to optional features and/or production variability. Following publication of the catalog, certain changes in standard equipment, options and the like, or product delays may have occurred which would not be included in these pages. Your Lincoln Mercury Dealer is the best source for up-to-date information. Lincoln Mercury reserves the right to change product specifications at any time without incurring obligations.

EXTERIOR PAINT COLORS



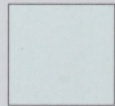
VIVID RED



SILVER BIRCH



ALLOY*



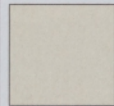
OXFORD WHITE



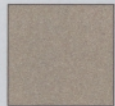
BLACK



DARK CHERRY*



WHITE CHOCOLATE TRI-COAT*



LIGHT FRENCH SILK

Peace of mind comes from a 3-year/36,000-mile bumper-to-bumper New Vehicle Limited Warranty that covers repair, replacement or adjustment of parts at no additional cost, as well as a 5-year/60,000-mile powertrain limited warranty which features no deductible and is fully transferable. Roadside Assistance for 3 years or 60,000 miles provides the security of knowing that help may be only a phone call away should you run out of fuel, lock yourself out of the vehicle or need towing. Your Lincoln Mercury Dealer will provide complete details on all of these privileges.