

2007

MERCURY MOUNTAINEER



MERCURY | NEW DOORS OPENED

**YOU DO IT ALL WITH
STYLE AND GRACE.**

PRECISELY WHY THE 2007 MERCURY MOUNTAINEER WILL BE YOUR TREASURED COMPANION. ITS SMOOTH RIDE AND PROGRESSIVE INTERIOR OFFER HIGH LEVELS OF MODERN STYLE. ADVANCETRAC® WITH RSC® (ROLL STABILITY CONTROL) AND THE INTELLIGENT SAFETY SYSTEM™ SUPPLY POISE AND GRACE WHEN NEEDED. THIS IS ONE SUV THAT DOES IT ALL. MUCH LIKE YOU.





**THE IMPORTANCE OF
A GRAND ENTRANCE.**
WITH MOUNTAINEER'S
SATIN-ALUMINUM-FINISH
GRILLE AND AVAILABLE
POWER RUNNING BOARDS,
FIRST IMPRESSIONS WILL
BE LASTING ONES.

Your first step into new surroundings can leave quite an impression. So as Mountaineer Premier's available **power-deployable running boards** glide out to ease the way, rest assured that your entrance will not go unnoticed. Perfectly flush and hidden when the vehicle is in motion, the running boards automatically slide out to greet your step as soon as a door handle is opened. When the door is closed, they retract out of the way underneath the vehicle. "As gadgets go, the motorized retractable running boards are pretty trick," says *AutoWeek*.

Up front, the bold presence of Mountaineer's gleaming satin-aluminum-finish grille capably announces your arrival. Standard 17" machined-aluminum wheels on Mountaineer and **18" satin-aluminum wheels on Mountaineer Premier** (shown) add to its already impressive stance. Red Light-Emitting Diode (LED) taillamps have clear lenses and artfully accented satin-aluminum-finish grilles, while subtle "Mercury" detailing sets off the bright strip that anchors Mountaineer's rear bumper. Above that, lightweight materials and a flip-open window make its rear liftgate a delight to use.





COMFORTING OPTIONS. SOPHISTICATED STYLING, REMARKABLE COMFORT, AND EASY-TO-USE VERSATILITY. IN MERCURY MOUNTAINEER, YOUR INTERIOR DREAMS HAVE ALL COME TRUE.

"What an absolutely beautiful-looking vehicle, inside and out," says *AutoWeek*. For proof, just begin with the standard **leather-trimmed, 10-way power driver's seat** with power lumbar and recline adjustments. On Mountaineer Premier, seating is available in your choice of stunning Charcoal Black (shown) or Camel with Sand Embossed Preferred Suede® inserts.

In the 2nd row, a standard 60/40 split seat completes the interior for 5-passenger models. For 6-passenger seating, select the available quad bucket seating with 2nd-row center console and 3rd-row 50/50 split seat. And if you need seating for 7 (shown), Mountaineer can be outfitted with the 60/40 split seat in the 2nd row and 50/50 split seat behind that. A manual-fold version of the 3rd-row seat is optional on Mountaineer, while the handy, **class-exclusive* PowerFold™ version is standard on Premier**. The PowerFold buttons make quick, easy work of folding down the seat, opening up 43.9 cu. ft. of cargo space. On 7-passenger models, Mountaineer's 2nd- and 3rd-row seats fold down to provide 83.7 cu. ft. of loadable room.



CHARCOAL BLACK INTERIOR: MOUNTAINEER PREMIER WITH AVAILABLE EQUIPMENT

**190-WATT AUDIOPHILE® SOUND SYSTEM**

AM/FM STEREO WITH 6-DISC IN-DASH CD CHANGER

SIRIUS SATELLITE RADIO CAPABLE

7 STRATEGICALLY PLACED SPEAKERS, INCLUDING AN 8" SUBWOOFER

AUDIO INPUT JACK FOR PLUG-AND-PLAY MP3-PLAYER CONNECTION

STANDARD ON MOUNTAINEER PREMIER; AVAILABLE ON MOUNTAINEER

PREMIUM AUDIO SYSTEM

AM/FM STEREO WITH SINGLE-CD PLAYER

SIRIUS SATELLITE RADIO CAPABLE

AUDIO INPUT JACK FOR PLUG-AND-PLAY MP3-PLAYER CONNECTION

STANDARD ON MOUNTAINEER

Mountaineer's DVD-based Navigation System with intersection programming actually **calls out upcoming street names** rather than just telling you in which direction to turn. It only takes seconds to compute complex routes in your choice of fastest drive or shortest distance. The control buttons around the system's **colorful 6.5" LCD touch screen** make information easy to access. You'll enjoy using the handy points-of-interest screen to help you quickly locate the nearest ATM, restaurant or lodging on your next road trip. This innovative system, packaged with the Audiophile Sound System, is optional on Mountaineer and Mountaineer Premier. It is also packaged with a power moonroof on Mountaineer Premier as part of its optional Navigation & Moonroof Package.

To spice up both Mountaineer audio systems, an available SIRIUS Satellite Radio* receiver with a 6-month subscription to the SIRIUS service can be factory-installed. And you can now broadcast your MP3 player through the speakers thanks to an audio input jack on the front of the center console.



FASTEST DRIVE



INTERSECTION PROGRAMMING



SHORTEST DISTANCE

*See your Lincoln Mercury Dealer or contact SIRIUS at 1-888-539-7474 for more information.

HANDLE THE SPICE OF LIFE WITH EASE. VARIETY IS THE ONE CONSTANT OF LIVING. PICKING UP THAT BIG SCREEN TV? HEADING OUT FOR A WEEKEND RETREAT WITH FRIENDS? YOU'VE COME TO THE RIGHT PLACE IN MERCURY MOUNTAINEER.



- 1 TWO-TONE SEAT TRIM*
- 2 POWER MOONROOF*
- 3 DUAL-ZONE AUTOMATIC TEMPERATURE CONTROL
- 4 POWERFOLD™ 3RD-ROW SEAT*
- 5 FULL-SIZE OVERHEAD CONSOLE
- 6 LEATHER SEAT TRIM
- 7 POWER-ADJUSTABLE PEDALS AND HEATED FRONT SEATS*
- 8 REAR-SEAT DVD WITH 8" SCREEN*
- 9 FLAT LOADFLOOR ON 7-PASSENGER MODELS
- 10 OUTFIT MOUNTAINEER IN 1 OF 3 CONFIGURATIONS
5-PASSENGER SEATING
6-PASSENGER SEATING
7-PASSENGER SEATING



10

*Available feature.



To provide absolute comfort for you and all of your passengers, every possible angle of interior space was scrutinized. The form, function and placement of everything from Mountaineer's large-handle floor shifter to its 3 available rows of seating was examined in detail. Results include a raised 3rd row that comfortably accommodates 2 adults when you need extra seating, and the curved contours of Mountaineer's high-release door handles that naturally follow the shape of a hand at rest.

Creature comforts include **Mountaineer Premier's standard heated front seats** (optional on Mountaineer) that feature push-button controls conveniently located in the center console. **Dual-zone Electronic Automatic Temperature Control** automatically maintains the temperatures selected by the driver and front passenger. For even more convenience, the system includes secondary climate controls on the steering wheel, so adjustments can be made while driving.

An available Rear-Seat DVD Entertainment System helps keep passengers happy with a **new 8" LCD screen**, a storage compartment for up to 3 DVDs, 2 sets of wireless headphones and a remote control.



THE NUMBERS REALLY ADD UP IN YOUR FAVOR.

A ROBUST 292 HP WITH
THE AVAILABLE V-8
ENGINE. AN AUTOMATIC
TRANSMISSION WITH
6 SPEEDS, AND UP TO
7 SMILING OCCUPANTS.

At the top of your numbers list is the output from Mountaineer Premier's available **4.6L 3-valve V-8 engine**: an extremely capable **292 hp and 300 lb.-ft. of torque**. High-flow ports, a charge motion control valve and dual-equal variable cam timing help the V-8 deliver its impressive performance. Also providing assistance is the first-in-class available 6-speed automatic transmission, whose evenly spaced gear ratios help it make the most of the V-8's powerband. "The V-8 has more than enough grunt and cruises down the road extremely quietly," says *AutoWeek*. "The 6-speed transmission is also among the smoothest I can remember."

On Mountaineer and Mountaineer Premier, a standard 4.0L V-6 engine is teamed with a wide-ratio 5-speed automatic transmission. With 210 hp and 254 lb.-ft. of torque, this engine even meets strict Ultra Low Emissions Vehicle II (ULEV II) standards.

An **Independent Rear Suspension** features a compact, trailing-arm setup. It works with the front suspension and stiff frame to deliver a refined ride and excellent handling. You'll feel connected to the road – not beat up by it. Heightening that connectivity is Mountaineer's optional **full-time AWD system***. This intuitive system smartly adapts to changing road and weather conditions as they occur, instantly transferring power to the axle with the best grip to help Mountaineer really hold the road.



SLEEK, MODERN AND OH SO QUIET.

OFTENTIMES, THOSE THAT MAKE THE GREATEST IMPRESSION DO SO WITHOUT A LOT OF FANFARE. ADD MERCURY MOUNTAINEER TO THAT LIST.



When it comes to design details, Mercury Mountaineer certainly stands out from its environment. It's a difference that carries over to Mountaineer's underpinnings as well. Each model is built on the solid footing of a remarkably stiff, fully boxed frame that serves as the foundation for Mountaineer's smooth ride and crisp handling.



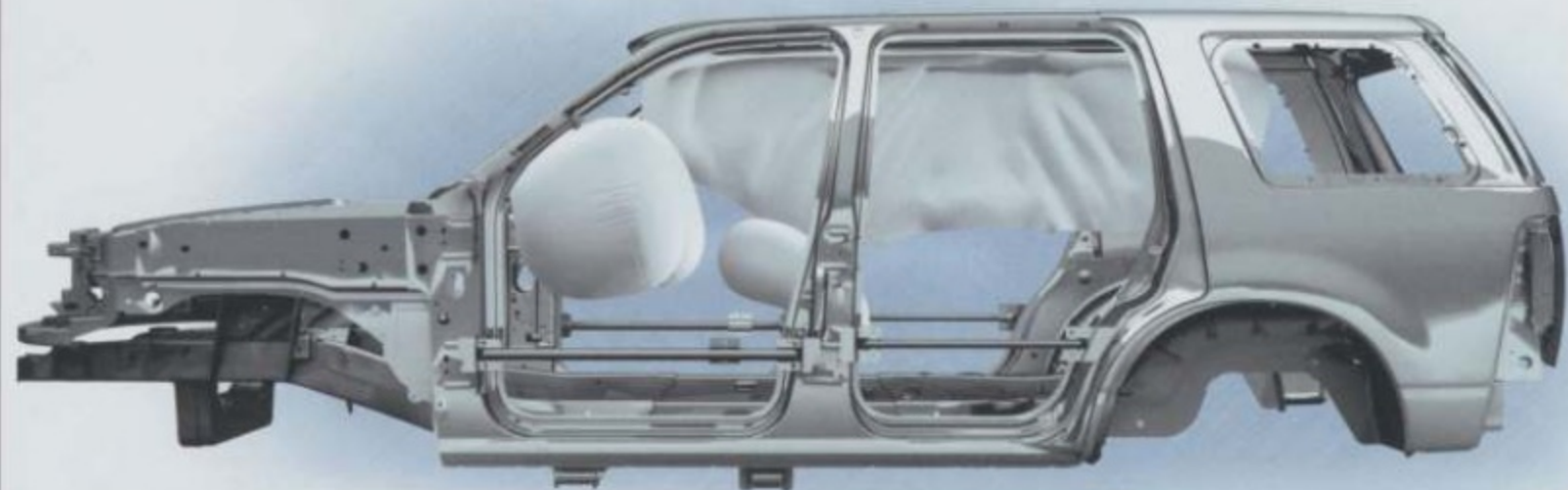
Inside, all sorts of details create a Mountaineer that's incredibly quiet. For starters, the carpet and headliner are made from lightweight, sound-deadening material that helps block outside noises. Mountaineer's large sideview mirrors feature an aerodynamic design that lessens wind noise. Mountaineer Premier's available power-deployable running boards retract and remain perfectly flush when the vehicle is in motion - for better airflow around its perimeter. Overall powertrain operation helps provide a quiet ride. Even the climate control system was designed with quiet in mind, contributing to the inner peace that's found inside Mountaineer. Our ultimate goal: to create the serene, comfortable ride that you deserve. To savor our success, take a nice, long drive in any 2007 Mercury Mountaineer model.



A COMPELLING CASE FOR SAFETY. ADVANCETRAC® WITH RSC.® A CLASS-EXCLUSIVE INTELLIGENT SAFETY SYSTEM.™ THE MOST STANDARD SAFETY FEATURES IN ITS CLASS. AND THAT'S ONLY THE BEGINNING.

Standard on every 2007 Mountaineer, AdvanceTrac® with first-in-class** RSC (Roll Stability Control) is an electronic stability enhancement system that actually measures what other systems ignore or estimate. Our system features a vehicle-roll motion sensor in addition to AdvanceTrac's Anti-lock Brake System (ABS), traction control and yaw control. RSC uses the sensor to directly measure the vehicle's roll-rate at least 100 times every second, which helps determine when and how the system will apply individual brakes and modify engine power to help keep all 4 wheels firmly planted.

In the event of a frontal collision, Mountaineer's adaptive front airbags use first-in-class adaptive venting technology to help tailor airbag power to occupant size and needs. 1st-row seat-side airbags help provide an extra measure of chest protection for the driver and front passenger in certain side-impact events. And our standard patented Safety Canopy™ System features large, 2nd-generation side-curtain airbags with roll-fold technology that helps them deploy properly in side-impact and rollover events – even if someone is leaning against the window.



FOR 2 YEARS IN A ROW, MOUNTAINEER HAS RECEIVED THE GOVERNMENT'S HIGHEST 5-STAR RATING IN FRONTAL AND SIDE-IMPACT CRASH TESTS.*

STANDARDS OF SAFETY

SAFETY BELT RETRACTORS
1ST-IN-CLASS, ADAPTIVE
LOAD-LIMITING

ADAPTIVE STEERING COLUMN
1ST-IN-CLASS, ENHANCES
DRIVER PROTECTION

DOOR TRIM AND ARMRESTS
ENERGY-ABSORBENT FOR
ENHANCED PROTECTION IN
SIDE IMPACTS

ARTICULATING HEAD RESTRAINTS
FOLD FORWARD WHEN NOT IN USE
TO IMPROVE REARWARD VISIBILITY

INTELLIGENT SAFETY SYSTEM
ADVANCED CRASH-SENSING
COMPUTERS DECIDE WHICH
RESTRAINT SYSTEM OR COMBINATION
WILL PROVIDE THE BEST PROTECTION
FOR EACH FRONT-SEAT OCCUPANT



MOUNTAINEER STANDARD FEATURES

POWERTRAIN/FUNCTIONALITY

4.0L 2-valve SOHC V-6 engine
5-speed automatic transmission
4-wheel power disc brakes with Anti-lock Brake System (ABS)
Class II trailer hitch receiver with 4-pin electrical connector and 3500-lb. towing capacity
Front and rear independent suspensions
Rear-wheel drive (4x2)

EXTERIOR

17" machined-aluminum wheels
Black roof rails
Fog lamps
Intermittent rear wiper with washer
Keyless-entry keypad
P245/65R17 all-terrain BSW tires
Power, sail-mounted sideview mirrors with security approach lamps
Privacy glass for rear doors, rear quarter windows and liftgate window
Satin-aluminum-finish grille
Solar-tinted windshield and front door glass
Speed-sensitive, intermittent windshield wipers

INTERIOR

1st-row leather-trimmed bucket seats with perforated-leather inserts and 10-way power driver's seat, including power lumbar and recline (vinyl 3rd row, if equipped)
2nd-row leather-trimmed fold-flat 60/40 split bench seat with recline, 2-way adjustable head restraints, and integrated seat restraints for middle passenger
4-line message center with compass, outside temperature, distance-to-empty and other information
Accessory delay
Auto-dimming rearview mirror
Color-keyed leather-wrapped steering wheel with secondary audio and climate controls, and cruise control
Dual-zone Electronic Automatic Temperature Control
Floor console with storage bin, 2 front and 2 rear cupholders, front and rear power points, low heat vents and high air conditioning register
Illuminated vanity mirrors
Overhead console includes 2 map lights with dome function, sunglasses holder and garage door opener holder (except when Auxiliary Climate Control or moonroof is ordered)

INTERIOR (continued)

Power door locks
Power windows with one-touch-down driver's-side feature
Premium AM/FM stereo/single-CD player with MP3 and SIRIUS Satellite Radio capabilities and audio input jack (located in 1st-row center console)
Remote keyless-entry system with 2 key fobs, panic alarm button and illuminated-entry system
Tilt steering column

SECURITY/SAFETY

Intelligent Safety System™ with adaptive steering column; driver and front-passenger adaptive load-limiting retractors; driver and front-passenger airbags* with adaptive venting and front-passenger adaptive tether; driver and front-passenger front-seat-side airbags* and Front-Passenger Sensing System
AdvanceTrac® with RSC® (Roll Stability Control)
Lower anchors and tether anchors for child-safety seats (LATCH) for all 2nd-row seating positions, and tether anchor for 3rd-row center position
Safety belts – 3-point safety belts for all seating positions
Safety Canopy™ System with side-curtain airbags for 1st- and 2nd-row passengers, with rollover sensor
SecuriLock® passive anti-theft system
Tire Pressure Monitoring System

MOUNTAINEER PREMIER STANDARD FEATURES

All Mountaineer content, plus:

EXTERIOR

18" satin-aluminum wheels
Color-keyed running boards
P235/65R18 all-season BSW tires
Reverse Sensing System
Satin-aluminum exhaust tip
Satin-aluminum roof rails

INTERIOR

1st-row leather-trimmed heated bucket seats with Preferred Suede® inserts, 10-way power driver's seat including power lumbar, recline and memory, and 6-way power passenger's seat with manual lumbar (vinyl 3rd row, if equipped)
3rd-row PowerFold™ 50/50 split bench seat
Audiophile® Sound System with AM/FM stereo, 6-disc in-dash CD changer with MP3 and SIRIUS Satellite Radio capabilities, audio input jack, 8" subwoofer, and 190 peak watts
Auxiliary Climate Control
Heated front seats
Universal Garage Door Opener

MOUNTAINEER MOUNTAINEER PREMIER

AVAILABLE EQUIPMENT

- 17" machined-aluminum wheels with P245/65R17 all-terrain BSW tires
- 18" satin-aluminum wheels with P235/65R18 all-season BSW tires
- 3rd-row 50/50 split bench seat
- 3rd-row PowerFold 50/50 split bench seat
- 4.6L 3-valve SOHC V-8 engine with 6-speed automatic transmission
- Audiophile Sound System with AM/FM stereo, 6-disc in-dash CD changer with MP3 and SIRIUS Satellite Radio capabilities, audio input jack, 8" subwoofer, and 190 peak watts
- Auxiliary Climate Control
- Cargo shade
- Color-keyed running boards
- Driver's-seat memory
- Full-time All-Wheel Drive (AWD)
- Heated front seats
- Heated windshield (not available with Navigation System)
- Navigation System – Includes Audiophile Sound System (not available in Alaska)
- Power-adjustable pedals with memory**
- Power-deployable running boards extend and retract automatically with door usage, and can also be set to remain extended or retracted
- Power moonroof with mini-overhead console†
- Premier Navigation and Moonroof Package – Navigation System and power moonroof
- Quad bucket seating†† with recline-and-fold feature, plus 2nd-row center console with 2 cupholders
- Rear-Seat DVD Entertainment System – Overhead DVD player with 8" pull-down screen, 2 wireless headphones, remote control and storage compartment for up to 3 DVDs or CDs
- Reverse Sensing System
- Roof-rail crossbars (Black on Mountaineer; satin-aluminum on Mountaineer Premier)
- SIRIUS Satellite Digital Audio Receiver System‡
- Trailer Tow Upgrade Package – Class III/IV trailer hitch with 4-pin and 7-pin electrical connectors
- Universal Garage Door Opener

Preferred Suede is a registered trademark of Milliken & Company.

Audiophile is a registered trademark of Audiophile, Inc.

*SIRIUS® and related marks are trademarks of SIRIUS Satellite Radio, Inc.

Dimensions (in.) 1st row/2nd row/3rd row Head room 39.8/38.7/37.4 Leg room 42.4/36.9/34.9 Shoulder room 59.0/58.9/53.1 Hip room 55.4/55.5/45.3 Length 193.5 Width (excl. mirrors) 73.5 Height 72.8 Wheelbase 113.7 Ground Clearance 8.5
Cargo volume (cu. ft. behind row) 5-passenger (1st row/2nd row) 85.8/45.1 7-passenger (1st row/2nd row/3rd row) 83.7/43.9/13.6
Axle ratio 3.55:1 standard; 3.73:1 optional (required and only available on 4.0L V-6 with Trailer Tow Upgrade Package)

4.0L SOHC V-6 Horsepower 210 @ 5160 rpm Torque 254 lb.-ft. @ 3700 rpm Compression ratio 9.7:1 **4.6L SOHC V-8** Horsepower 292 @ 5750 rpm Torque 300 lb.-ft. @ 3950 rpm Compression ratio 9.8:1
V-6 towing (lbs.) 4x2 standard 3500 AWD standard 3500 4x2 optional 5290 AWD optional 5000 **V-8 towing** 4x2 standard 3500 AWD standard 3500 4x2 optional 7220 AWD optional 7050

WHEELS



17" MACHINED-ALUMINUM
Standard on Mountaineer;
optional on Mountaineer Premier



18" SATIN-ALUMINUM
Standard on Mountaineer Premier;
optional on Mountaineer

COLOR PALETTE

MOUNTAINEER MOUNTAINEER PREMIER AVAILABLE

EXTERIOR PAINT COLORS



OXFORD WHITE



VIVID RED



LIGHT FRENCH SILK

WHITE CHOCOLATE
YR-COAT*

ALLOY**



DARK CHERRY**



SILVER BIRCH



BLACK

*New for 2007.

Mercury uses clearcoat paint for beauty and protection. All exterior paints are Metallic except for Oxford White and Black. Colors are representative only.



Get the ride you want. Whether you plan to lease or finance, you'll find the choices that are right for you at Ford Credit. Ask your Lincoln Mercury Dealer for details or check us out at www.fordcredit.com.

Ford Motor Company Insurance Services Set Ford Motor Company quality in your auto insurance. Our program offers industry-leading benefits and competitive rates. Call 1-877-362-3642 or visit us at www.fordip.com for a no-obligation quote. Insurance offered by American Road Services Company (in CA, American Road Insurance Agency), a licensed agency and subsidiary of Ford Motor Company.

Ford Extended Service Plan For a purchase or lease, the Ford Extended Service Plan (ESP) gives you "Peace-of-Mind" protection designed to cover key vehicle components and protect you from the cost of unexpected repairs. Ask your dealer for an ESP; the only service contract backed exclusively by Ford and honored at all Ford Lincoln Mercury dealerships.

Comparisons based on 2006 competitive models (truck-based Midsize SUV class), publicly available information and Ford certification data at time of printing. Some features discussed may be optional. Vehicles shown may contain optional equipment. Features shown may be offered only in combination with other options or subject to additional ordering requirements or limitations. Dimensions shown may vary due to optional features and/or production variability. Following publication of the catalog, certain changes in standard equipment, options and the like, or product delays may have occurred which would not be included in these pages. Your Lincoln Mercury Dealer is the best source for up-to-date information. Lincoln Mercury reserves the right to change product specifications at any time without incurring obligations.



MERCURY | NEW DOORS OPENED

mercuryvehicles.com

