

SUPERCAR

SEDAN AND WAGON



HOLDEN 
COMMODORE
Car of The Year

SUPERSEDAN

Technology gives Camira super success.

Australia's motoring press and the public have been lavish in their acclaim of Holden Camira. In the first five months of release Camira became the fastest selling four cylinder sedan ever in Australia.

Wheels Magazine awarded Camira the coveted "Car of the Year" award and a panel of 21 motoring journalists, coordinated by Modern Motor Magazine, pronounced Camira "The Car of '82."

Justifiably, Camira wears the crown of Supercar. Here's why:

▲ Camira gives you FDT-Holden Front Drive Technology. Not just front wheel drive, but a whole car designed around the advantages of a transversely mounted engine driving the front wheels—tenacious traction during acceleration and cornering, steering that's a milestone in manoeuvrability, more interior passenger space, more boot space than any car

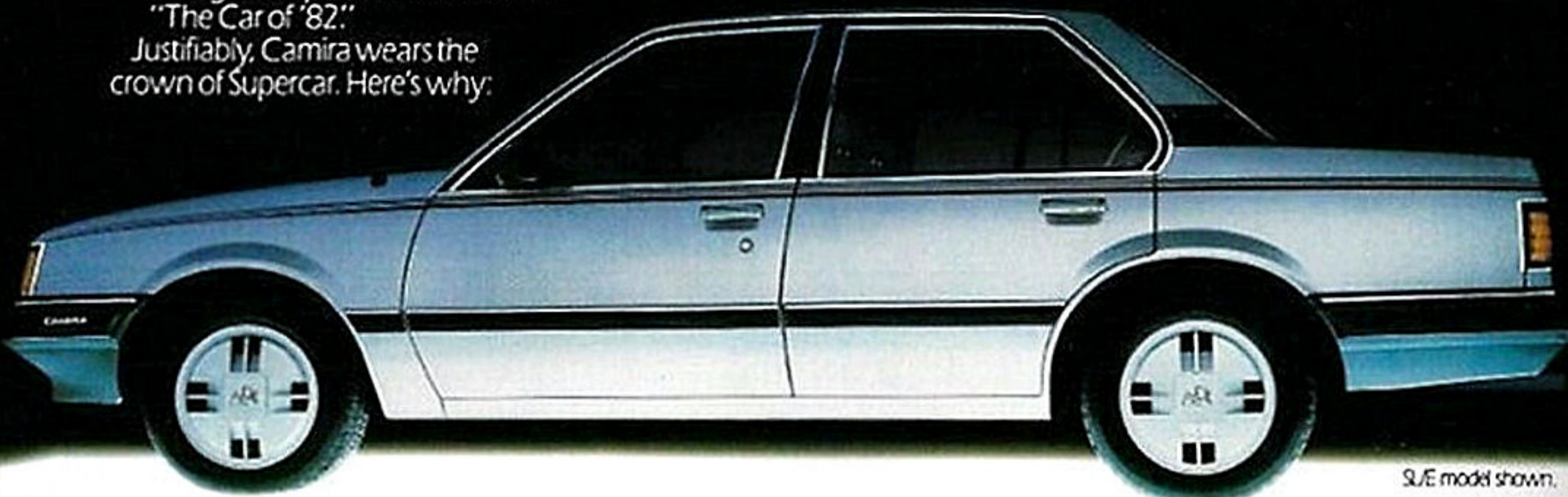
in Camira's class, a clean underbody with no rear differential or tailshaft, and

remarkable economy through weight-saving.

▲ Totally new styling, aerodynamically designed to cheat the wind, and cut fuel costs.

▲ Camtech 4—an overhead camshaft 1.6 litre powerhouse which outdoes larger engines with outstanding performance and amazing fuel economy.

▲ Camira eminently represents the Holden Team's commitment to bring you the very best that the constantly advancing world of automotive technology can offer.



S/E model shown.

SUPERWAGON

And now a new achievement in space efficiency.

Today wagon development is all about providing more and more interior space from an existing external dimension. But to date space in compact wagons has been limited by their conventional design. Enter the new Australian-designed Holden Camira Superwagon,

which has more useable space than anything in its class. How is it done? By introducing the amazing space efficiency of our front wheel drive. Holden's Front Drive Technology (FDT) achieves the extra space yet retains the superb road feel and handling of the sedan.

All the car benefits

All the superior features and technology of the Camira sedan are here in the wagon. It is a real driver's car in wagon form.

▲ Camira has the best cargo volume in its class—1990 litres.

▲ The load space is wider between the wheel arches than its nearest competitor. Ground to floor level is only 459 mm for easier loading than any other medium size wagon.

▲ Tailgate and rear bumper are integrated. Other makes' bumpers protrude, requiring you to stretch forward when

loading. Camira gives you full access to the load area with this innovative design feature.

▲ Unique divided rear seat. Among wagons only Camira offers you a rear seat with a 60/40 division. Either side can be used by a passenger while the other is lowered to accommodate long loads.

▲ Camira is a Superwagon in every sense, with technological innovation bringing practical benefits everywhere—there's even a built-in dust deflector on the tailgate.



S/E model shown.

CAMIRA SPECIFICATIONS

FOR SEDAN AND WAGON

Engine	Camtech 4 (4 cylinder). Overhead Camshaft. electronic ignition.					
	Stroke 79.5 mm					
	Bore 80.0 mm					
	Displacement 1.598 litres					
	Compression Ratio 9.2:1					
	Power Output 64 kW (DIN) at 5800 rpm					
	Torque 125 Nm (DIN) at 3800 rpm					
Taxable Horsepower 15.87						
Transmissions	4-speed manual (SL, SL/X). Gear ratios: First 3.55:1. Second 2.16:1. Third 1.37:1. Fourth 0.97:1. Reverse 3.33:1. 5-speed manual (SL/E). Gear ratios: First 3.42:1. Second 1.95:1. Third 1.28:1. Fourth 0.89:1. Fifth 0.71:1. Reverse 3.33:1.					
Front Drive	Drive shafts from the transaxle unit drive the front wheels.					
Final Drive Ratio	4-speed manual 3.737:1. 5-speed manual 3.94:1. Auto 3.33:1.					
Radial Tuned Suspension	Front: MacPherson "Wet Strut," coil springs, stabiliser bar. Negative scrub radius. Rear: Trailing compound crank rear axle, gives similar effect to independent rear suspension. Double-acting shock absorbers, progressive rate coil springs, stabiliser bar.					
Steering	Rack and pinion. Variable Ratio.					
Brakes	Power assisted. Front disc/rear drum.					
Fuel Tank Capacity	60 litres					
Fuel Economy	(4-speed) City Cycle 9.5 litres per 100 km (29.7 mpg). H'way Cycle 6.4 litres per 100 km (44.1 mpg). (5-speed) City Cycle 9.5 litres per 100 km (29.7 mpg). H'way Cycle 6.2 litres per 100 km (45.6 mpg). <small>Fuel consumption figures stated are the results of GMH-administered laboratory tests conducted according to AS 2077-1979 procedures - "Methods of test for fuel consumption of passenger cars and their derivatives." City and highway cycles.</small>					
Towing Capacity	500 kg without trailer brakes, 900 kg with trailer brakes.					
Luggage Capacity	SEDAN			WAGON		
	0.4 cubic metres (402 litres) useable (GM specification). 0.475 cubic metre total.			Cargo Volume 1990 litres with rear seat down; 1020 litres with rear seat up.		
Dimensions (mm)	SL	SL/X	SL/E	SL	SL/X	SL/E
	Overall length	4377	4399	4399	4323	4345
	width	1668	1683	1683	1668	1668
height	1363	1363	1360	1358	1358	1427
Ground Clearance (mm) <small>At 4 passenger load</small>	126		128	127		130
Estimated Kerb Weights (kg)	1029	1038	1064	1070	1089	1115
Wheelbase 2577 mm						
Track/Front and Rear 1403 mm						
Turning Circle Kerb to Kerb 10.2 metres						

	SEDAN			WAGON		
	SL	SL/X	SL/E	SL	SL/X	SL/E
Wheels and Tyres	Wheels 5.5 x 13 JJ pressed steel. Standard Tyres AR78S 13 or P175/75SR13 tubeless steel belted radials.	5.5 x 14 JJ Cast alloy. Standard Tyres P195/60 HR14 tubeless steel belted radials.	5.5 x 14 JJ Cast alloy. Standard Tyres AR78S 13 or P175/75SR13 tubeless steel belted radials.	Wheels 5.5 x 13 JJ pressed steel. Standard Tyres AR78S 13 or P175/75SR13 tubeless steel belted radials.	5.5 x 14 JJ cast alloy. Standard Tyres P195/60 HR14 tubeless steel belted radials.	5.5 x 14 JJ cast alloy. Standard Tyres P195/60 HR14 tubeless steel belted radials.
Routine Service Intervals	10,000 km or 6 months.					

	SEDAN			WAGON		
	SL	SL/X	SL/E	SL	SL/X	SL/E
Optional Equipment	All six Camira models are comprehensively equipped. For this reason the list of optional extra-cost items is not extensive. For full details of options, and prices, please check with your Holden Dealer.					
5-speed manual transmission	O	O	S	O	O	S
Turbo Hydramatic automatic transmission	O	O	O	O	O	O
Concealed retractors on rear seat lap & shoulder belts	O	S	S	O	S	S
Trip computer	NA	O	O	NA	O	O
Air conditioning	O	O	O	O	O	O
Cloth trim seats	O	S	S	O	S	S
Driver's seat height adjuster	O	S	S	O	S	S
Remote control outside rear view mirror pass. side	O	O	S	O	O	S
Remote control outside rear view mirror driver's side	O	S	S	O	S	S
Special finish metallic paint	O	O	S	O	O	S
BR70 H13 Steel belted radial tyres	O	O	NA	O	O	NA
Tail Gate washer/wiper	NA	NA	NA	O	S	S
Anodised aluminium adjust. roof rack	NA	NA	NA	O	O	S

S-standard; O-optional; NA-not available

GMH 12/20 warranty. Every Holden Camira is covered by the GMH New Vehicle Warranty which covers your vehicle for the first 12 months or 20,000 kilometres, whichever occurs first. A word about this catalogue. We have tried to make this catalogue as comprehensive and factual as possible. However, since the time of printing some of the information you'll find here may have been updated. Also, some of the equipment shown or described through this catalogue is available at extra cost. And the right is reserved to make changes at any time without notice, in prices, colours, materials, equipment, and models. Your Holden Dealer has details, and before ordering, you should ask him to bring you up to date. No GMH Dealer or other person is authorised or permitted to give or make any statement, assertion or undertaking in relation to the quality performance characteristics descriptions or fitness for any purpose of any GMH product which is at variance with any written statement, assertion or undertaking on any of these subjects given or made by General Motors-Holden's Limited or General Motors-Holden's Sales Pty. Ltd. in its published sales literature, and neither company accepts any liability for any such unauthorised action. General Motors-Holden's Limited and General Motors-Holden's Sales Pty. Ltd. have franchised dealers in many parts of Australia for the sale of service parts and the provision of service to owners of GMH's products. Every endeavour is made to ensure that such dealers carry adequate stocks of service parts, but neither General Motors-Holden's Limited nor General Motors-Holden's Sales Pty. Ltd. makes any promise, other than that contained in the New Vehicle Warranty given by General Motors-Holden's Sales Pty. Ltd. that such parts or service facilities will be available at any specific location or at any particular time. Copyright: General Motors-Holden's Sales Pty. Limited.



SL Advanced technology in your choice of Sedan or Wagon.



Digital clock is standard equipment on all Camira sedans and wagons.



The Camira SL embodies everything you expect in a modern car, and a great deal more. Day and night, you are surrounded by driving aids, convenience and comfort features which contribute to pleasant journeys. In Summer, an extremely efficient flow-through ventilation

system minimises any heat discomfort; in Winter you will never be cold, thanks to an equally efficient heater-demister system. You'll find the SL satisfying in every fundamental way. In the SL Wagon you'll find space and accessibility unmatched in any other medium sized wagon.

SLX More luxury and convenience for just a little extra, in Sedan or roomy Wagon.



SLX Wagon shown with optional adjustable roof rack.



In addition to big space and access advantages, over other wagons in its class, Camira features a divided rear seat for carrying loads plus one or two rear seat passengers.

The Camira SLX is distinguished by exterior touches designed to heighten styling features. Inside, you'll notice more obvious differences...softer, warmer cord cloth seating and extra refinements to controls and interior detailing. The SLX gives you an improved sound system, with stereo cassette player, FM stereo as well as AM radio reception and two speakers.

There's extra convenience for rear seat passengers, too, with retracting outboard seat belts and door grip handles. Camira's phenomenally serene ride is enhanced in the SLX with the addition of even more body insulation material to give you luxury car quietness. The Wagon version features a tailgate window washer-wiper.

SL/E SL/E—flagship prestige in Sedan or Wagon.

When you drive a GMH car with an SL/E badge, it's a quiet signal to others that you are driving the flagship of the line, with all its connotations of prestige, taste and luxury. This is no less true of the Camira SL/E. This is a car to fill up the senses, with exterior trimmings such

as cast alloy wheels with low profile tyres. The interior also is quickly distinguishable, with superb tweed upholstery, cut-pile carpet, head bolsters on the rear seats, velour headlining, plus an instrument array that would do credit to a dearer import, and a 4-speaker sound system with more power than many home hi-fi outfits.

Metallic paintwork, tinted side and rear glass and a handsome useful anodised aluminium adjustable roof rack are extra touches of distinction as standard equipment on the Wagon. On inspection, you'll discover other refinements that will convince you the Camira SL/E offers much more value-for-money than its competitors.



5-speed manual transmission (standard on SL/E) is great fuel-saver.



Camira instrument panel, shown here equipped with SL/E instrument cluster, optional Trip Computer, and air conditioning.

FEATURES Sedan and Wagon

SL Standard equipment

Exterior

- ▲ Camtech 4 transverse engine with Front Wheel Drive.
- ▲ Overhead camshaft.
- ▲ Hall Effect electronic ignition.
- ▲ Engine Management Module incorporating Electronic Emissions and Engine Economy System.
- ▲ Crossflow radiator with high energy core.
- ▲ Coolant recovery system.
- ▲ 4 speed manual transmission.
- ▲ Variable Ratio rack and pinion steering.
- ▲ Coil springs at all 4 wheels.
- ▲ Front stabiliser bar.
- ▲ Rear stabiliser bar.
- ▲ Radial Tuned Suspension.
- ▲ Power brakes: front disc/rear drum.
- ▲ Aero styled exterior R.V. mirror with breakaway safety feature.
- ▲ Wide full length body side moldings.
- ▲ Recessed lock-down radio antenna.
- ▲ Quartz halogen headlights.
- ▲ High intensity reversing lights.
- ▲ Polypropylene splash guards in front fender liners to prevent mud packing and stone damage.
- ▲ Corrosion protection package.

Interior

- ▲ 12 heating/ventilation outlets including side window demisters.
- ▲ Soft-rim steering wheel.
- ▲ Reclining front bucket seats.
- ▲ Front seat head restraints.
- ▲ High density sound insulation materials on floor, roof and luggage area.
- ▲ Tray-type locking glove compartment.
- ▲ Heated rear window.
- ▲ Vacuum Economy Gauge.
- ▲ AM Radio.
- ▲ Digital clock.
- ▲ Central dome lamp activated by all doors.
- ▲ Baggage compartment lamp.
- ▲ Cargo area lamp (Wagon).
- ▲ Secondary weather strips for improved dust sealing.
- ▲ Dust sealing panels at base of body pillars.
- ▲ Armrests on all four doors.
- ▲ Overhead assist handles for passengers.
- ▲ Rear coat hooks.
- ▲ Rear ashtray.
- ▲ Illuminated cigarette lighter.
- ▲ Trip meter in speedometer.
- ▲ Fuel and temperature gauges.
- ▲ Brake failure and parking brake warning lights.
- ▲ "Child-proof" rear door locks.
- ▲ Child restraint anchorage points for rear seat.
- ▲ 60/40 divided rear seat (Wagon).
- ▲ Cargo floor carpet (Wagon).

- ▲ Carpet on lower door trim.
- ▲ Vinyl door insert.
- ▲ AM/FM stereo radio/cassette, twin speakers.
- ▲ Intermittent windscreen wipers.
- ▲ Cord cloth seating.
- ▲ Glove compartment light.
- ▲ Rear door grip handles.
- ▲ Remote control driver's exterior mirror.
- ▲ Boot floor carpet.
- ▲ Rear lap-shoulder belts retract.
- ▲ Additional insulation.
- ▲ Coin box.
- ▲ Driver's seat height adjuster.



SL interior trim showing wagon rear divided seat.



Camira SLX interior trim in comfortable cord cloth, with hard-wearing vinyl backing. Driver's seat features easy-to-use height adjuster.



Camira SL/E interior trim in high quality wool mix tweed, driver's seat features adjustable lumbar support and a seat height adjuster.

SL/E Standard features (in addition to SLX model features).

Exterior

- ▲ Cast alloy wheels.
- ▲ Low profile tyres.
- ▲ Power radio antenna.
- ▲ Remote LHS exterior mirror.
- ▲ Door-window surround bright moldings.
- ▲ Pin striping.
- ▲ Metallic paint finish.
- ▲ Anodised aluminium adjustable roof rack package (Wagon).

Interior

- ▲ 5-speed manual transmission.
- ▲ Wool mix tweed seat trim.
- ▲ Rear seat head bolsters.
- ▲ Cut pile carpet.
- ▲ Tachometer (replaces Economy gauge).
- ▲ 2 additional stereo speakers (Total 4).

- ▲ Remote boot release (Sedan).
- ▲ Vanity mirror.
- ▲ Driver's seat adjustable for height and lumbar support.
- ▲ Door jar warming light.
- ▲ Wool mix tweed insert on upper door trim.
- ▲ Cut pile cowal trim panel.
- ▲ Velour head lining.
- ▲ Oil pressure and volt meter gauges.
- ▲ Tinted side and rear glass.

SLX Standard equipment (in addition to SL model features).

Exterior

- ▲ Chrome wheel trim rings.
- ▲ Centre wheel hubcaps.
- ▲ Back door-window frame surrounds.
- ▲ Rear end bright moulding.
- ▲ Fuel tank locking cap.
- ▲ Tailgate washer-wiper (Wagon).



Centre section of wagon bumper is integral with tailgate, allowing you to stand closer to load floor.