

2025

# IONIQ 6







<sup>1</sup> Estimated all-electric range for SE Long Range RWD trim based on a fully-charged battery and combined MPGe rating. All figures are EPA estimates and for comparison purposes only. Actual mileage may vary with options, driving conditions, driving habits and vehicle's condition. <sup>2</sup> Claim based on comparison of specifications on manufacturer websites. <sup>3</sup> Approximately 18 minutes to charge from 10% to 80% on a 350-kW, 800V DC ultra-fast charger. Actual charging time varies based on a number of factors, including current battery charge level, output of the charging unit, vehicle and battery settings, battery temperature and outside temperature. Ultra-fast charging stations are provided by independent companies and availability is not guaranteed. <sup>4</sup> Available on new 2025 IONIQ 6 vehicles purchased from an authorized U.S.-based Hyundai dealer (excluding Alaska). Some restrictions apply. Two years of 30-minute complimentary DC fast-charging sessions at Electrify America charging stations begins upon date of vehicle purchase or lease. Non-transferable. Not available for commercial use, such as ride-hailing or ridesharing. Requires Electrify America app, account, enrollment in IONIQ 6 Charging Plan, acceptance of Terms of Use, and an initial deposit to fund idle fees and charging after initial 30 minutes. Complimentary charging time does not include any idle fees and associated or applicable taxes assessed at the charging station. After user-initiated charging session stops or vehicle reaches full charge, and following a 10-minute grace period, idle fees and applicable taxes will apply and user is responsible. After the initial 30 minutes of each eligible charging session, charging continues uninterrupted at then-current Electrify America pricing. There is a 60-minute waiting period between eligible charging sessions, and the IONIQ 6 Charging Plan benefits will not apply to a charging session initiated within this period. In the event of suspected fraud or abuse, or other unforeseen events, Hyundai Motor America may discontinue or modify the offer in its sole discretion. Electrify America charging stations only available in the continental U.S. <sup>5</sup> View U.S. News Best Cars at cars.usnews.com.

IONIQ 6 Limited in Transmission Blue



## It's all curves. And ahead of the curve.

At Hyundai, our IONIQ line of electric vehicles has been revolutionizing the EV driving experience. The 2025 IONIQ 6 blends sophistication and simplicity in a manner that is breathtaking to behold. And a revelation when you take hold of the wheel.

Let's start with this critical factor: Range. IONIQ 6 has an all-electric range estimated at up to 342 miles on a full charge.<sup>1</sup> This exceptional efficiency flows from a pure coupe-like form that results in a drag coefficient of 0.22, making IONIQ 6 one of the most aerodynamic production vehicles.<sup>2</sup> From its parametric pixel LED lighting to its flush door handles and see-through shark fin antenna, IONIQ 6 slips through the air with minimal resistance.

IONIQ 6 pushes ultra-fast EV charging fast-forward, too. In as little as 18 minutes, it can go from 10 to 80 percent charged using a 350 kW DC Fast Charger.<sup>3</sup> Enter a

recognized DC fast-charging station into IONIQ 6's navigation system, and a battery preconditioning feature can automatically initiate to warm the car's battery for quicker recharging in a variety of weather conditions.

As an IONIQ 6 owner you'll receive two years of complimentary 30-minute charging sessions on Electrify America's DC fast-charging network.<sup>4</sup> And thanks to Hyundai's proprietary Electric Global Modular Platform, you will be among the few EV drivers who can take advantage of the network's 350 kW charging speeds.

Rest assured, the IONIQ 6 isn't just an EV for daily commutes or around-town errands. It's a spacious touring sedan that serves as a full partner for all of your driving needs. It's no wonder the Hyundai IONIQ 6 was named 2024 Best Electric Car by U.S. News & World Report.<sup>5</sup>





# Smooth power. Sharp moves.

IONIQ 6 Limited in Transmission Blue

While there are three IONIQ 6 trim levels to choose from, one thing happens when you press the accelerator: A quiet, urgent whoosh of thrust propels you forward. On RWD models, the power from a 77.4-kWh battery system energizes an electric motor to the tune of up to 225 hp and 258 lb-ft of torque.<sup>1</sup>

The added traction of All Wheel Drive is also available, with dual electric motors channeling up to 320 hp and 446 lb-ft of torque for optimal performance. Want to enhance the mood of your IONIQ 6? An available EV sound system boosts the sonic thrill as you accelerate, while available dual-color ambient lighting subtly changes intensity to match your speed.

IONIQ 6 performs with aerodynamic efficiency as well. Active grille shutters funnel cooling air to help keep the battery at an optimal temperature. Side vents lower resistance by directing a slipstream of fast-moving air around the front tires. And a rear spoiler creates downforce to add plenty of stabilizing grip.

Steering wheel paddles let you adjust the amount of energy captured during braking – energy IONIQ 6 uses to charge its battery. Energy is captured when coasting, too, thanks to a radar-based regenerative system. You can choose one of four driving modes – Eco, Normal, Sport or Snow – to satisfy your driving style or road conditions. There’s also a customizable drive mode that lets you alter IONIQ 6’s motor, steering and available AWD settings to suit your preferences.

<sup>1</sup> Ratings for SE Long Range, SEL and Limited RWD trims. <sup>2</sup> SmartSense features vary by trim level. See Owner’s Manual for feature details and limitations. <sup>3</sup> Rear Cross-Traffic Collision-Avoidance Assist (RCCA) is designed to notify drivers of approaching cross-traffic behind the vehicle. When another vehicle is detected while you are backing out of a parking spot, it provides audible and visual display warnings and applies braking if it senses a collision is imminent. RCCA is active when your car is in reverse gear at a speed less than 6 mph. It only engages during the first activation of reverse gear from park and may not detect all vehicles. Never rely exclusively on RCCA. Always look over your shoulder and use your mirrors to confirm rear clearance. There are limitations to the function, detection, range and clarity of the system. See Owner’s Manual for details and limitations. <sup>4</sup> The Surround View Monitor is a parking support system. It cannot completely eliminate blind spots, may not detect every object and does not warn of moving objects. Always check your surroundings before moving your vehicle. See Owner’s Manual for details and limitations. <sup>5</sup> Blind-Spot Collision Warning (BCW) assists the driver by warning of other cars in the blind-spot region. There are limitations to the function, range, detection and clarity of the system. It will not detect all vehicles or objects in the blind spot. BCW may not operate if sensors are obscured in any way. Do not rely exclusively on BCW. BCW is a supplemental system, and the driver must be attentive and exercise caution when driving. It is important to always signal, look over your shoulder and through your mirrors before changing lanes. See Owner’s Manual for details and limitations. <sup>6</sup> The Blind-Spot View Monitor (BVM) assists in changing lanes by providing a live view of the blind spots on either side of the vehicle and sounding an audible alert if another vehicle is detected. The turn signal must be activated, and other system limitations apply. Do not rely exclusively on BVM. It is the driver’s responsibility to be aware of the surroundings and ensure it is clear before changing lanes or directions. See Owner’s Manual for details and limitations. <sup>7</sup> Highway Driving Assist (HDA), when used in conjunction with Lane Following Assist and Smart Cruise Control (and/or Lane Change Assist and Cut-in Assist with HDA 2), is for highway use only and helps keep you centered in your lane while maintaining a safe distance from the vehicle ahead. Lane markings must be clearly visible on the road. HDA should not be used in poor weather, heavy or varying traffic, or on winding or slippery roads. HDA will not work under all circumstances and will not prevent loss of control. Driver remains responsible to slow or stop the car to avoid a collision. See Owner’s Manual for details and limitations. <sup>8</sup> Assisted lane change function occurs when the driver operates the turn signal while holding the steering wheel and driving over 37 mph. See Owner’s Manual for details and limitations. <sup>9</sup> Smart Cruise Control (SCC) is not a collision-avoidance or warning device. SCC is for highway use only and should not be used in poor weather, heavy or varying traffic, or on winding or slippery roads. The driver remains responsible for slowing or stopping the vehicle to avoid a collision. SCC initiates a full stop when the traffic ahead stops, and reengages if the vehicle ahead moves forward within three seconds. See Owner’s Manual for details and limitations. <sup>10</sup> To qualify for 2024 TOP SAFETY PICK+, a vehicle must earn good ratings in the small overlap front and updated side tests and no less than acceptable in the updated moderate overlap front test. It also must earn an acceptable or good rating for pedestrian front crash prevention and come with standard acceptable- or good-rated headlights. For details visit [www.iihs.org](http://www.iihs.org).

# All-encompassing safety.

To safeguard you and your passengers on the road, IONIQ 6 surrounds you with an array of radar sensors, cameras and ultrasonic sensors. It’s all part of Hyundai SmartSense, our suite of advanced safety and driver-assist features.<sup>2</sup>

Around town, standard Rear Cross-Traffic Collision-Avoidance Assist<sup>3</sup> and front/rear parking sensors work with an available Surround View Monitor<sup>4</sup> to help navigate parking maneuvers. On the highway, standard Blind-Spot Collision Warning<sup>5</sup> monitors your flanks, and an available Blind-Spot View Monitor<sup>6</sup> displays live video from either side of the car in the instrument cluster of your IONIQ 6.

Highway Driving Assist (HDA) is an advanced cruise control that not only maintains a safe distance from the vehicle ahead, but also maintains your position within the driving lane, automatically adjusting for changing speed limits and reducing your speed as you approach curves in the road.<sup>7</sup>

Available Highway Driving Assist 2 (HDA 2) enhancements help you respond to vehicles that cut into your lane at low speeds, as well as vehicles that drive too close in the adjacent lane. When operational parameters are met, it can even assist in making lane changes.<sup>8</sup> And as part of HDA 2’s Smart Cruise Control,<sup>9</sup> machine learning can mimic the driver’s tendencies for acceleration and spacing with the vehicle ahead.



Lane Following Assist

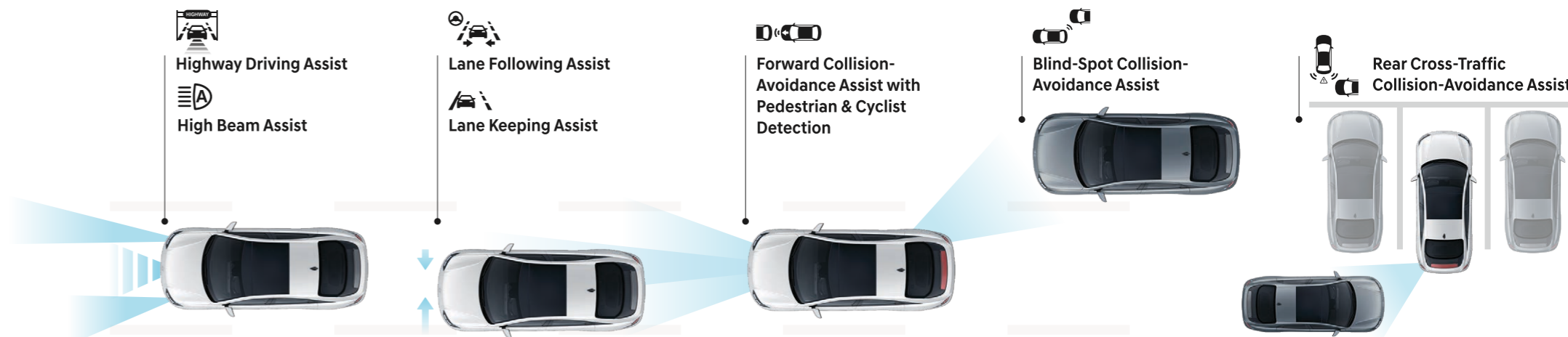


Surround View Monitor



Blind-Spot View Monitor

## Hyundai SmartSense Technologies







IONIQ 6 Limited with Black H-Tex® seating surfaces

## An inside view of the future.

Open the door to the spacious cabin of IONIQ 6, and you'll see the future of stylish comfort. A future crafted from eco-friendly biomaterials derived from canola flower and corn extracts, sugarcane and recycled fishing nets – all reimagined in modern design.

Your first indication of IONIQ 6's novel approach comes when you push your SEL or Limited's start button: Dual-color ambient lighting emits a soft, soothing glow throughout the cockpit. On the steering wheel, a row of interactive pixel lights discretely indicates the charging status of your car. Beyond the steering wheel, a 12.3" digital instrument cluster vividly displays precise performance metrics as you drive.

Hyundai Design created the interior to serve as your personal studio. IONIQ 6 Limited's premium Bose® audio system projects its clear sound through eight speakers, including a powerful subwoofer. Every IONIQ 6 comes with Apple CarPlay® and Android Auto™, and you can connect two phones to the audio system simultaneously via Bluetooth® – one for phone calls, and one for music streaming.<sup>1</sup> An available wireless phone charger keeps your smartphone powered up,<sup>2</sup> and five USB ports (three up front and two for the rear seats) are standard.

A convenient Vehicle-to-Load (V2L) power outlet below the rear seats is available to ensure you can juice your plug-in digital devices and larger electronic items.<sup>3</sup> Planning a road trip? The navigation system charts optimal routes based on your car's battery charge level and locates charging stations along the way. Once you arrive at your destination, an available Remote Smart Parking Assist 2 feature lets you pull your IONIQ 6 into or out of tight parking spaces – without you having to be behind the steering wheel – simply by using your key fob.<sup>4</sup>



12.3" instrument cluster & touchscreen displays



Apple CarPlay®



Remote Smart Parking Assist 2



Wireless phone charger



Rear seat Vehicle-to-Load (V2L) power outlet

**BOSE**  
Better sound through research.

HD Radio™  
Technology

SiriusXM®  
Satellite Radio

Android Auto™  
Apple CarPlay®

Bluetooth® Multiple  
Device Connection

<sup>1</sup> Apple CarPlay is a registered trademark of Apple Inc. Android Auto™ is compatible with Android™ phones running Android 5.0 or higher. Android Auto may not be available on all devices and is not available in all countries or regions. Additional apps may be required. Android and Android Auto are trademarks of Google LLC. <sup>2</sup> Qi wireless charging function is based on smartphone compatibility and/or specific accessory cases. <sup>3</sup> Vehicle-to-Load two-way charging will deplete the battery and become inoperable once battery discharge limit reaches 20 percent. Not all electrical appliances will operate properly when using this feature. Do not use products that require a continuous power supply, and only use appliances under 16 amps. Additional limitations may apply. See Owner's Manual for details and limitations. <sup>4</sup> Remote Smart Parking Assist 2 (RSPA) can help remotely park your vehicle. RSPA may not function correctly if a parking sensor is damaged, dirty or covered, or if weather conditions (heavy rain, snow or fog) interfere with sensor operation. Always inspect the parking area with your own eyes. See Owner's Manual for details and limitations.



# Introducing Bluelink+: No fees. No trial. No worries.

With the introduction of Bluelink+, Hyundai has become the first automotive brand to offer its suite of connected car features to new car purchasers at no extra cost. Bluelink+ is truly complimentary with the purchase of your new 2025 IONIQ 6.<sup>1</sup>

Bluelink features technologies designed to help keep you safe – from automatic collision notifications to automatic emergency assistance if your airbags deploy and enhanced roadside assistance that sends your exact location to a roadside assistance associate. Bluelink also includes helpful maintenance features like remote diagnostics and monthly vehicle health reports. All complimentary with a 2025 IONIQ 6 new vehicle purchase for the life of the supporting wireless network technology.<sup>2</sup>

Our MyHyundai with Bluelink app turns your compatible smartphone, smartwatch or smart home assistant device into a Bluelink remote control. You can unlock the doors and start the climate controls of your IONIQ 6 before you even walk out the door.<sup>3</sup>

Use the available Digital Key 2 Touch to enter your IONIQ 6, and your radio and navigation system presets are configured automatically via your Bluelink personal profile.<sup>4</sup> Apple Wallet,<sup>®</sup> Samsung Pass<sup>®</sup> and Google Wallet<sup>™</sup> let you share your digital key with trusted friends and family members<sup>5</sup> – as the primary driver, you control when a shared key can be used, and you can pause or end shared-key access at any time.



## Automatic Emergency Assistance

Bluelink offers you 24/7 SOS Emergency Assistance as well as Automatic Collision Notification that calls for help if you're in an accident where your vehicle's airbags deploy.<sup>6</sup>



## Remote Vehicle Status

Wondering how much charge your battery has? If the doors are locked or your trunk is closed? Your MyHyundai with Bluelink app knows the answers to these questions and more.



## Remote Charge Access

You can control your IONIQ 6's charging remotely while it is plugged into an external power source, and schedule charging at specific times to take advantage of low-demand hours and rates.



## Remote Climate Controls

Preheating your IONIQ 6 when you're connected to a power source saves battery power that would be needed to heat your vehicle on the road. On warm days, the Remote Climate Control can cool the cabin before your drive.



## Remote Vehicle Controls

Your compatible smartphone, smart speaker or wearable device can remotely start your IONIQ 6, unlock the doors, set the cabin's temperature, and much more.



## Destination Send-to-Car

Use your MyHyundai with Bluelink app to find restaurants or other points of interest, then send the destination to your IONIQ 6's navigation system before you start to drive.

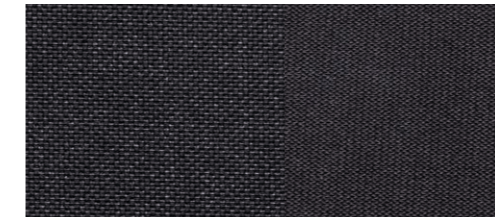


IONIQ 6 Limited in Transmission Blue

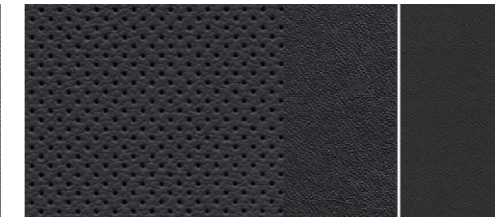


Digital Key 2 Touch

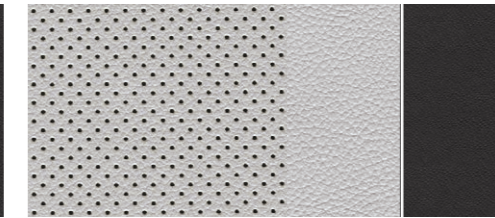
## Interior Colors



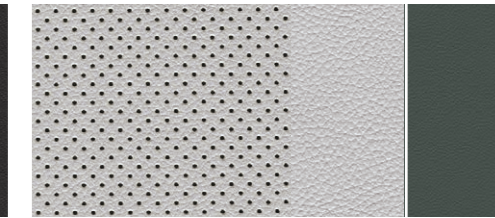
Black Cloth SE



Black H-Tex<sup>®</sup> SEL / Limited

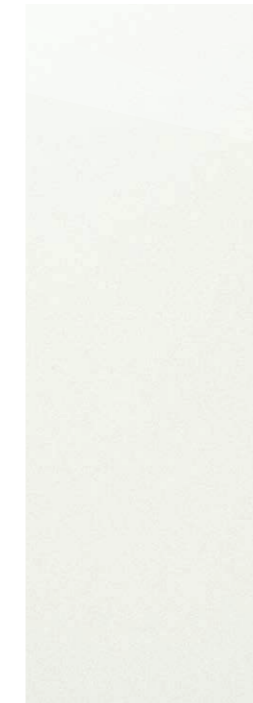


Gray H-Tex<sup>®</sup> SEL / Limited



Dark Green/Gray H-Tex<sup>®</sup> SEL / Limited

## Exterior Colors



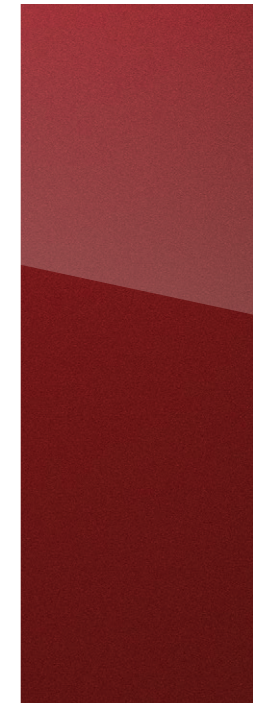
Serenity White



Curated Silver



Transmission Blue



Ultimate Red



Onyx Black



Gravity Gold Matte

## Wheels



18" Alloy Wheel SE



20" Alloy Wheel SEL / Limited

<sup>1</sup>Bluelink+ is available to purchasers and lessees of new 2025 and newer Bluelink-equipped Hyundai models. Bluelink+ requires an active Bluelink subscription agreement subject to the Connected Services Terms and Conditions. Only use Bluelink features and corresponding devices when safe to do so. Cellular and GPS coverage is required. Features, specifications and fees are subject to change. <sup>2</sup>All Bluelink services rely on digital wireless telecommunications technology outside of our control and in the control of the wireless carriers who provide the telecommunications technology. 4G LTE cellular networks are controlled and maintained by third-party wireless carriers. Telecommunication technologies have been known to change over time. If and when these networks change and discontinue services, or the underlying technology required to support Bluelink is obsolete, then the connected services will not work and we will be forced to cancel impacted subscription services. <sup>3</sup>Requires active Bluelink Advanced subscription (complimentary for the original owner). Remote climate control available on properly equipped models with fully automatic temperature control. <sup>4</sup>Near Field Communication and Ultra-Wideband digital smartphone keys requires a compatible smartphone and an appropriately equipped Hyundai vehicle. Not all smartphones or devices are compatible. Hyundai vehicle must be equipped with smart key with push button start and wireless device charging. Lock/unlock functionality works on front doors only. Requires MyHyundai with Bluelink app and active Bluelink account. Features and specifications subject to change. Please visit [www.MyHyundai.com](http://www.MyHyundai.com) for information on compatible devices. See your Owner's Manual for additional details and limitations. <sup>5</sup>Apple<sup>®</sup> is a registered trademark of Apple Inc. Samsung<sup>®</sup> is a registered trademark of Samsung Electronics Inc. Google<sup>®</sup> is a trademark of Google LLC. <sup>6</sup>Bluelink agents will contact existing emergency service responders.



## IONIQ 6 SE



Single-Motor Rear Wheel Drive<sup>1</sup> 225 HP  
 Dual-Motor All Wheel Drive 320 HP

258 LB-FT 446 LB-FT

Popular Features	
LED headlights/taillights and parametric pixel Daytime Running Lights	
Proximity key with push button start	
Parking Distance Warning – Forward/Reverse	
Highway Driving Assist	
Bluelink+ Connected Car System with Remote Charge Access	
12.3" digital instrument cluster	
12.3" navigation system	

<sup>1</sup>Equipped with 77.4 kWh battery

Exterior Dimensions	IONIQ 6
Wheelbase	116.1 in
Overall Length	191.1 in
Overall Width	74.0 in
Overall Height	58.9 in

## IONIQ 6

Electric EPA Estimates (City/Highway/Combined)

144/120/132 MPGe 342 Estimated All-Electric Range

SE Long Range RWD\*

130/111/121 MPGe 316 Estimated All-Electric Range

SE AWD

\*SE Standard Range RWD (not shown) equipped with a 53.0 kWh battery rated at a combined 135 MPGe with a 240-mile All-Electric Range. MPGe is the EPA-equivalent measure of gasoline fuel efficiency for electric mode operation. Use for comparison purposes only. Mileage may vary with driving conditions, driving habits, the vehicle's condition, the age/condition of the lithium ion battery and other factors. Estimated All-Electric Range reflects fully charged battery and combined MPGe rating.

## IONIQ 6 SEL



Single-Motor Rear Wheel Drive 225 HP  
 Dual-Motor All Wheel Drive 320 HP

258 LB-FT 446 LB-FT

Popular Features	
20" alloy wheels	
Digital Key 2 Touch and wireless phone charger	
Dual-color ambient LED interior lighting (adjustable – 64 colors)	
Highway Driving Assist 2	
Blind-Spot Collision-Avoidance Assist	
Auto-dimming rearview mirror with HomeLink®	
H-Tex® seating surfaces	

Interior Dimensions	IONIQ 6
Headroom – front (with sunroof) / rear	40.2 (38.3) / 36.9 in
Legroom – front / rear	42.3 / 39.2 in
Shoulder Room – front / rear	58.0 / 57.3 in
Passenger Volume	103.0 cu ft
Total Interior Volume	114.2 cu ft

123/100/111 MPGe 291 Estimated All-Electric Range

SEL / Limited RWD

111/94/103 MPGe 270 Estimated All-Electric Range

SEL / Limited AWD

## IONIQ 6 Limited



Single-Motor Rear Wheel Drive 225 HP  
 Dual-Motor All Wheel Drive 320 HP

258 LB-FT 446 LB-FT

Popular Features	
Blind-Spot View Monitor and Surround View Monitor	
Full-color Head-up Display	
Remote Smart Parking Assist 2	
Parking Collision-Avoidance Assist – Reverse/Forward/Side	
Bose® premium audio (8 speakers)	
Rear-seat Vehicle-to-Load (V2L) power outlet	
Ventilated front seats and heated steering wheel	
Integrated Memory System for driver seat	
8-way power front passenger seat with power lumbar support	
Rain-sensing windshield wipers	
Wide sunroof with sunshade	

### All Wheel Drive Option

AWD dual-motor electric powertrain



Ultra-fast 350 kW DC fast charger

## IONIQ 6

Power & Handling	SE	SEL	Limited
RWD 168 kW (225 hp) / 258 lb-ft permanent-magnet synchronous motor	●	●	●
53 kWh lithium ion battery	●	–	–
AWD 74 kW + 165 kW (320 hp) / 446 lb-ft permanent-magnet synchronous dual motors	○	○	○
77.4 kWh lithium ion battery	●	●	●
Ultra-fast charging system (up to 800V / 350 kW)	●	●	●
Battery heating system and battery preconditioning function	●	●	●
Heat pump for thermal efficiency	●	●	●
Rack-mounted Motor-Driven Power Steering	●	●	●
Column-mounted Shift-by-Wire gear selector	●	●	●
Regenerative brake level control paddles	●	●	●

Exterior Features	SE	SEL	Limited
Active grille shutters	●	●	●
Automatic on/off headlights with High Beam Assist	●	●	●
LED headlights and taillights	●	●	●
Parametric pixel LED Daytime Running Lights	●	●	●
Heated side mirrors with LED turn signal indicators	●	●	●
Power-folding side mirrors	–	–	●
Flush door handles with automatic extend/retract	●	●	●
Premium gloss black exterior accents	–	–	●
Rear spoiler with LED brake light	●	●	●
Power hands-free smart trunk with auto open	●	●	●
Rain-sensing windshield wipers	–	–	●

Interior & Convenience Features	SE	SEL	Limited
Proximity Key with push button start	●	●	●
12.3" digital instrument cluster	●	●	●
Full-color Head-up Display	–	–	●
Leather-wrapped tilt-and-telescopic steering wheel with interactive pixel lights	●	●	●
Dual automatic temperature control and floor console-mounted rear vents	●	●	●
Cloth seating surfaces	●	–	–
H-Tex® seating surfaces	–	●	●
8-way power driver seat with adjustable lumbar support	●	●	●
Heated front seats	●	●	●
Integrated Memory System for driver seat	–	–	●
8-way power front passenger seat with power lumbar support	–	–	●

Interior & Convenience Features	SE	SEL	Limited
Ventilated front seats and heated steering wheel	–	–	●
Dual-color ambient LED interior lighting (adjustable – 64 colors)	–	●	●
Premium door sill plates and aluminum pedals	–	–	●
60/40 split-folding rear seats with center armrest	●	●	●
Wide sunroof with sunshade	–	–	●
Rear-seat Vehicle-to-Load (V2L) power outlet	–	–	●
Auto-dimming rearview mirror with HomeLink®	–	●	●
Smart Cruise Control with Stop & Go	●	●	●
Remote Smart Parking Assist 2	–	–	●

Advanced Safety	SE	SEL	Limited
Forward Collision-Avoidance Assist with Pedestrian/Cyclist Detection	●	–	–
Forward Collision-Avoidance Assist with Pedestrian/Cyclist Detection, Junction Turning/Crossing Detection and Evasive Steering Assist	–	●	●
Lane Keeping Assist and Lane Following Assist	●	●	●
Highway Driving Assist (HDA   HDA 2)	● –	– ●	– ●
Blind-Spot Collision Warning	●	●	●
Blind-Spot Collision-Avoidance Assist	–	●	●
Rear Cross-Traffic Collision-Avoidance Assist	●	●	●
Driver Attention Warning	●	●	●
Blind-Spot View Monitor and Surround View Monitor	–	–	●
Safe Exit Warning and Rear Occupant Alert	●	●	●
Parking Distance Warning – Forward/Reverse	●	●	●
Parking Collision-Avoidance Assist – Reverse/Forward/Side	–	–	●

Audio & Connected Car Technology	SE	SEL	Limited
12.3" navigation system	●	●	●
Bose® premium audio (8 speakers)	–	–	●
SiriusXM® Satellite Radio and HD Radio™	●	●	●
Apple CarPlay® and Android Auto™	●	●	●
Bluetooth® multiple device connection (up to two devices)	●	●	●
Digital Key 2 Touch and wireless phone charger	–	●	●
Bluelink+ Connected Car System with Remote Charge Access	●	●	●
Over-the-Air vehicle software updates	●	●	●
Dynamic Voice Recognition	●	●	●
e-ASD electronic powertrain sound	–	–	●
USB ports: Front (1 data/charge + 2 charge), Rear (2 charge)	●	●	●

● Standard ○ Optional – Not Available ● SE Long Range trim only





Hyundai Hope On Wheels®

Helping Kids Fight Cancer Since 1998



## Hope comes standard on every Hyundai.

Each time we sell a Hyundai, a portion goes to Hyundai Hope On Wheels® to help find a cure for childhood cancer. Over the last 26 years, Hyundai Hope On Wheels has donated \$250 million to pediatric cancer research. Hope is our greatest feature. And it comes standard on every Hyundai. For more information, please visit [HyundaiHopeOnWheels.org](http://HyundaiHopeOnWheels.org).



## America's Best Warranty

**POWERTRAIN LIMITED WARRANTY**

**10** YEARS  
100,000 MILES

**NEW VEHICLE LIMITED WARRANTY**

**5** YEARS  
60,000 MILES

**ANTI-PERFORATION WARRANTY**

**7** YEARS  
UNLIMITED MILES

**24/7 ROADSIDE ASSISTANCE**

**5** YEARS  
UNLIMITED MILES

**HYBRID/EV DIRECT ENERGY COMPONENTS**

**10** YEARS  
100,000 MILES



**Hyundai Complimentary Maintenance**

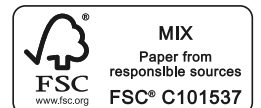
**COMPLIMENTARY MAINTENANCE INCLUDES FOUR (4) BASIC MAINTENANCE SERVICE VISITS THAT MUST BE USED IN THE FIRST 3 YEARS OR 36,000 MILES, WHICHEVER COMES FIRST.** Basic maintenance includes Hyundai-approved oil and oil filter change (except for electric vehicles and fuel cell electric vehicles), multi-point inspection plus tire rotation. Driving at normal factory-scheduled maintenance intervals would cover four services for the first 3 years or 36,000 miles. Any additional services and parts are excluded. Offer valid only for original owners of new 2025 model year Hyundai vehicles. See your Hyundai dealer for details and limitations.



**Owner Assurance**

Our commitment to Hyundai owners does not end with the transfer of keys. Wherever the road takes you, we have got your back with Hyundai Owner Assurance, an umbrella of services and benefits that includes America's Best Warranty, 24/7 Roadside Assistance, innovative safety and car care features...and more.

America's Best Warranty claim based on total package of warranty programs. See dealer for LIMITED WARRANTY details. See your Hyundai dealer and [HyundaiUSA.com/Assurance](http://HyundaiUSA.com/Assurance) for details and limitations. While the information contained in this brochure is based on the latest information available at the time of printing, specifications and equipment can change. Feature comparisons are based on competitor information available at the time of printing. Although the information contained in this brochure is believed to be correct, accuracy cannot be guaranteed. No warranty or guarantee is being extended in this brochure, and Hyundai reserves the right to change product specifications and equipment at any time, without notice, without incurring obligations. Some vehicles are shown with optional equipment. Specifications apply to U.S. vehicles only. Please contact your Hyundai dealer or visit [HyundaiUSA.com](http://HyundaiUSA.com) for current vehicle specifications or details on any of the programs or services listed here. As part of Hyundai's commitment to a responsible environment, this brochure was printed using paper certified by the Forest Stewardship Council® FSC® certification helps ensure that the highest social and environmental standards are met in the making of the paper we use, contributing to conservation, responsible management and community-level benefits for people near the forests.



©2024 HYUNDAI