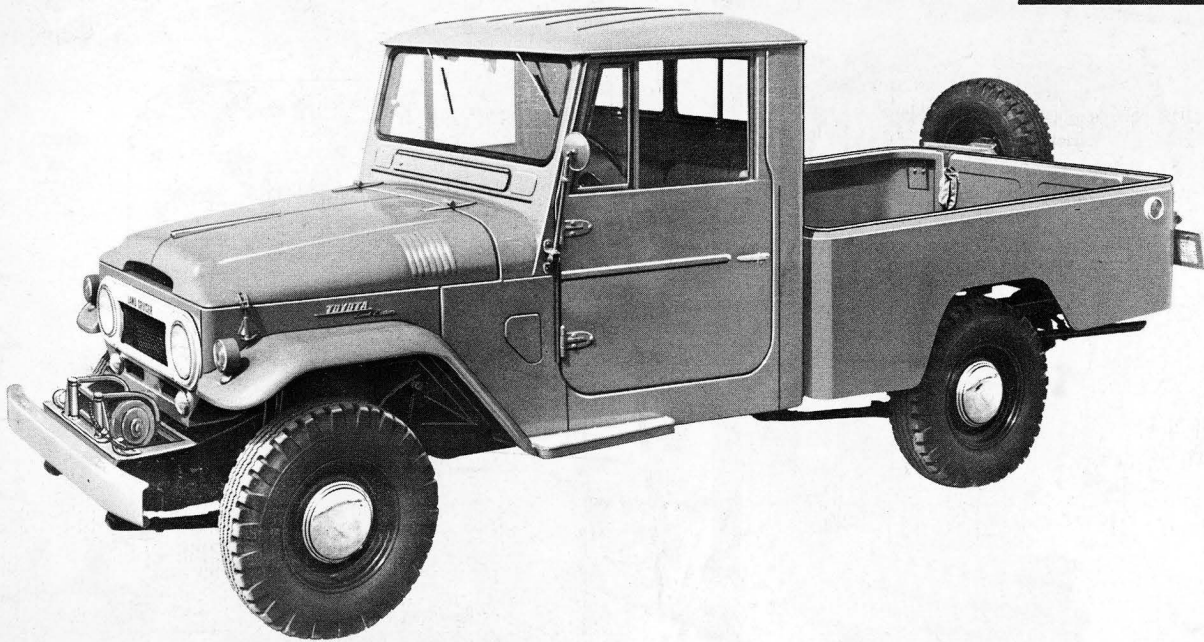
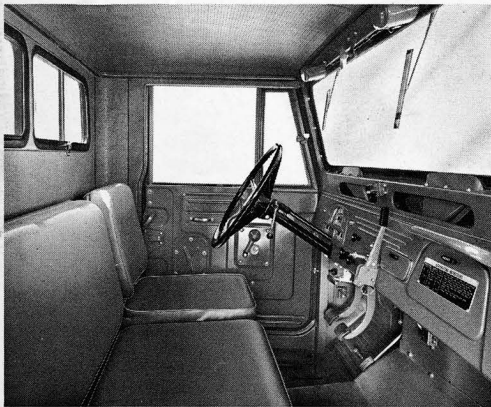


TOYOTA *LAND CRUISER*

FJ45
135 HP



WORLD'S TOUGHEST 4-WHEEL DRIVE PICK-UP TRUCK



Whatever the load, whatever the road, Toyota's Land Cruiser Pick-Up Truck is built to get the job done. No other Pick-Up can do more than this one. It's got the room for a $\frac{1}{2}$ ton load; the power to go anywhere; and the beefed-up all steel construction that a hard-working truck needs to keep on going in any emergency. Any business—large or small—will benefit from its speed, efficiency and economy of operation.

Goes anywhere—up steep 64° grades, through sand, mud or snow. Takes anything—in its roomy 6' x 5' Pick-Up box. The spare wheel and tailgate swing away for easy loading. Three adults ride comfortably in the Toyota

Land Cruiser's cab, designed for long hours of fatigue-free driving.

On the highway, the Toyota Land Cruiser Pick-Up rolls along in 2-wheel drive, up to 85 MPH. When the going gets rough, slip into 4-wheel drive and the Toyota Land Cruiser digs in and keeps going.

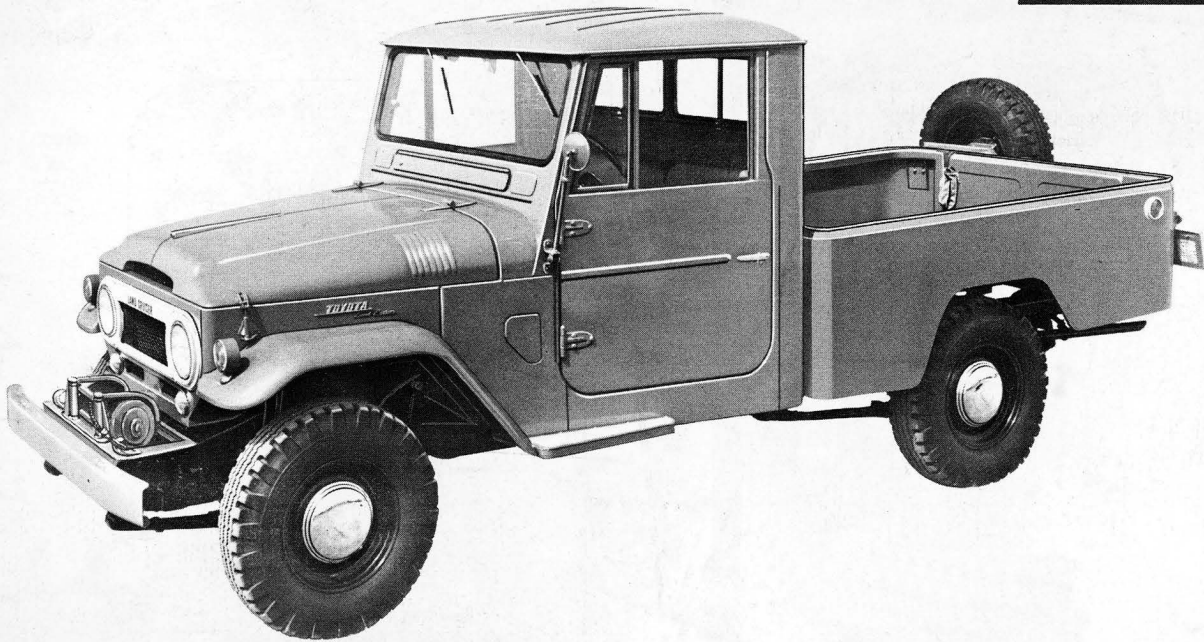
On the weekend, it goes where the fun is—to remote hunting, fishing and camping spots. Tough construction, a powerful 135 HP engine and 9 forward, 3 reverse combinations make the Toyota Land Cruiser Pick-Up unbeatable in the 4-wheel drive truck field.

If you want a Pick-Up that knows how to pick up and go **anywhere**, drive this one today.

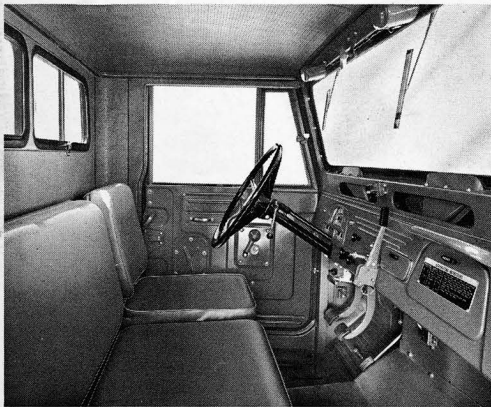


TOYOTA *LAND CRUISER*

FJ45
135 HP



WORLD'S TOUGHEST 4-WHEEL DRIVE PICK-UP TRUCK



Whatever the load, whatever the road, Toyota's Land Cruiser Pick-Up Truck is built to get the job done. No other Pick-Up can do more than this one. It's got the room for a $\frac{1}{2}$ ton load; the power to go anywhere; and the beefed-up all steel construction that a hard-working truck needs to keep on going in any emergency. Any business—large or small—will benefit from its speed, efficiency and economy of operation.

Goes anywhere—up steep 64° grades, through sand, mud or snow. Takes anything—in its roomy 6' x 5' Pick-Up box. The spare wheel and tailgate swing away for easy loading. Three adults ride comfortably in the Toyota

Land Cruiser's cab, designed for long hours of fatigue-free driving.

On the highway, the Toyota Land Cruiser Pick-Up rolls along in 2-wheel drive, up to 85 MPH. When the going gets rough, slip into 4-wheel drive and the Toyota Land Cruiser digs in and keeps going.

On the weekend, it goes where the fun is—to remote hunting, fishing and camping spots. Tough construction, a powerful 135 HP engine and 9 forward, 3 reverse combinations make the Toyota Land Cruiser Pick-Up unbeatable in the 4-wheel drive truck field.

If you want a Pick-Up that knows how to pick up and go **anywhere**, drive this one today.

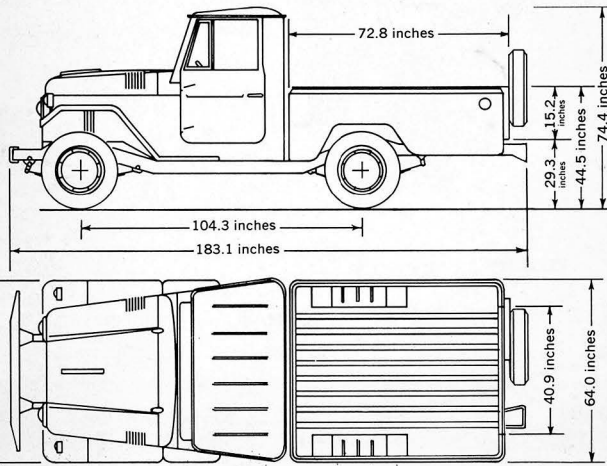


SPECIFICATIONS

FJ45

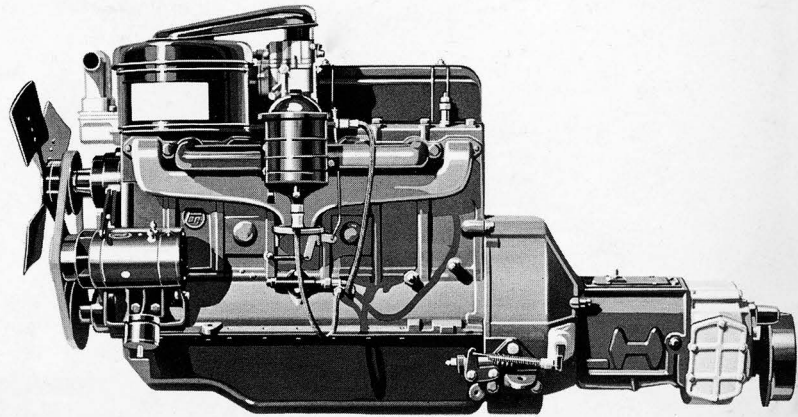
DIMENSIONS AND WEIGHT

Overall length	183.1 inches
width	65.6 inches
height	74.4 inches
Wheelbase	104.3 inches
Tread, front	55.3 inches
rear	53.1 inches
Curb weight	3682 lbs.
Load capacity	1102 lbs.
Gross vehicle weight	5500 lbs.
Ground clearance	8.5 inches



ENGINE—Model F gasoline engine, 4-cycle. Valve-in-head.

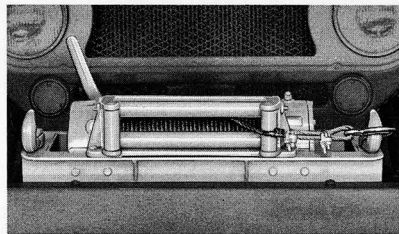
No. of cylinders	6
Bore and stroke	3.54 x 4 inches
Displacement	237.3 cubic inches
Compression Ratio	7.5:1
Gross HP	135 @ 3800 RPM
Maximum Torque	217 ft. lbs. @ 2000 RPM
Battery	12-volt, 55 amp. hour
Fuel Tank Capacity	18.5 U.S. Gallons
Rear axle ratio	4.11:1
Steering ratio	21:1
Turning radius	20.3 feet
Tires	7.60-15, 4 ply



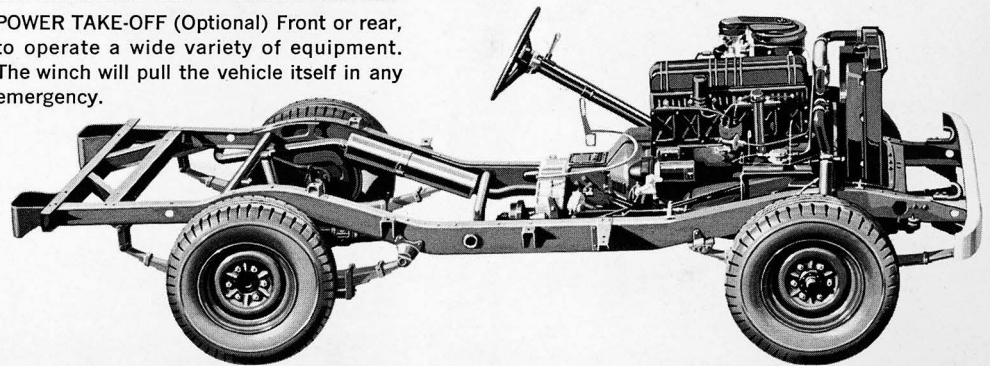
Dependable and economical, the F-Model 6-cylinder engine packs 135 HP.

STANDARD EQUIPMENT

- Hi-Lo Range 4-Wheel Drive
- Transfer Control on Dash
- Hub Caps
- Tool Box Lock
- Hydraulic Clutch
- Locking Gas Cap
- Reinforced Oil Pan
- Opening Door Windows
- Flashing Directional Signals
- Ventilating Windshield
- Side Cowl Ventilators
- Two Front Towing Hooks
- Outside Rearview Mirror
- Oil Filter
- Fuel Filter
- Oil Bath Air Cleaner



POWER TAKE-OFF (Optional) Front or rear, to operate a wide variety of equipment. The winch will pull the vehicle itself in any emergency.



Rugged and proven, the Toyota Land Cruiser's all-steel chassis is built for rough handling. Tough semi-elliptic leaf springs, and single acting, hydraulic shock absorbers give a comfortable, sure-footed ride. Extra strength is built into every component: front and rear axles and tie rod ends, for example, are induction heated. The Toyota Land Cruiser is the toughest all purpose 4-wheel drive vehicle in the world.

TOYOTA MOTOR DISTRIBUTORS, INC.

LOS ANGELES, SAN FRANCISCO, NEWARK

Toyota's policy is one of continual improvement in design and manufacture. The specifications and equipment described in this publication are thus subject to change without notice.