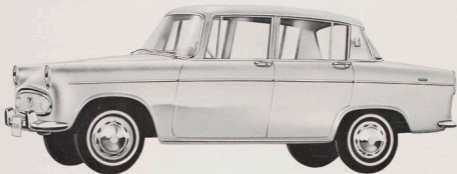


TOYOTA

TIARA

RT 30 L

85 HP



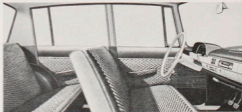
4-DOOR FAMILY SPORTS SEDAN

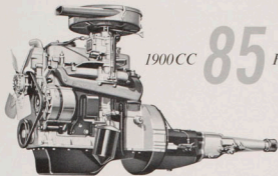
To own a Toyota Tiara is "fun". The superb handling and acceleration place it ahead of most sports cars in performance. The 85 horsepower engine is combined with a full synchromesh transmission, allowing you to shift through the gears to top speed quick as a flash, yet at full highway speeds there is still plenty of reserve in a Tiara. Combining this with Tiara's cornering ability, suspension and roadability make Toyota Tiara a truly "fun" car to drive.

Riding in a Tiara is "fun" too, because Toyota has built luxury, style and beauty into this family sports sedan. Such "nice" things as color matched interiors, padded dash, arm rests for all four passengers, twin sun visors, twin full sweep electric windshield wipers, interior light that goes on and off as you open and close the doors, ash trays front and rear, cigarette

lighter . . . In fact Tiara has all of the luxury, comfort and beauty that make it "fun" to ride in a Tiara.

Part of the "fun" in owning a Toyota Tiara is its economy . . . Both when you buy it and when you drive it.





1900CC **85** HP



SPECIFICATIONS

ENGINE 4-cylinder in line, overhead valve

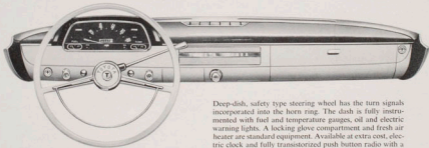
Bore and Stroke: 3.46 x 3.07 in.
 Displacement: 115.7 cu. in.
 Compression Ratio: 7.7
 Maximum horsepower: 85 @ 4600 rpm
 Max. Torque: 110 ft. lb. @ 2600 rpm
 Carburetor: 2-barrel with automatic choke
 Fuel Tank capacity: 10.6 US gallons
 Oil capacity: 4.8 quarts
 Cooling system: 7.9 quarts
 Battery: 12 volt 300 watt

CLUTCH: Dry plate, 7.9 inches diameter with pendant pedal hydraulic release
 TRANSMISSION: 3-speed synchromesh, steering column shift lever position
 REAR AXLE: Semi-floating hypoid gear 3.900-1
 SUSPENSION: Torsion bar independent in front with asymmetrical, semi-elliptic leaf springs in rear
 STEERING: Worm and sector roller type with 20:1 gear ratio and 17 foot turn radius

BRAKES: Hydraulic four wheel 132 sq. in. of braking surface

TIRES: 5.60x13, four ply, tubeless
 DIMENSIONS, WEIGHT and PERFORMANCE:

Wheel base: 94.5 inches
 Overall length: 159.5 inches
 Overall width: 58.7 inches
 Overall height: 56.7 inches
 Tread front & rear: 48.5 inches
 Curb weight: 2315 pounds
 Maximum speed: 90 miles per hour
 Maximum cruising: 82 miles per hour



Deep-dish, safety type steering wheel has the turn signals incorporated into the horn ring. The dash is fully instrumented with fuel and temperature gauges, oil and electric warning lights. A locking glove compartment and fresh air heater are standard equipment. Available at extra cost, electric clock and fully transistorized push button radio with a power antenna.

TOYOTA



MOTOR TOYOTA MOTOR DISTRIBUTORS, INC.

Los Angeles, San Francisco, Portland, Oregon, Denver, Newark

Toyota's policy is one of continual improvement in design and manufacture. Hence, specifications, equipment and prices are subject to change without notice.