

Dodge Rebellion Operation '67 CORONET



Tired
of middle-of-the-road
madness?

Coronet
attacks drab driving
on all fronts

Forward, nonconformists. Join the revolt against run-of-the-mill cars, and move ahead with Coronet. Coronet '67 puts a whole new face on driving, keeps you way out front of the crowd. It's the slick, smart way to outpace the commonplace.



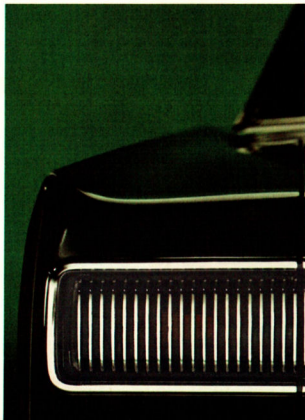
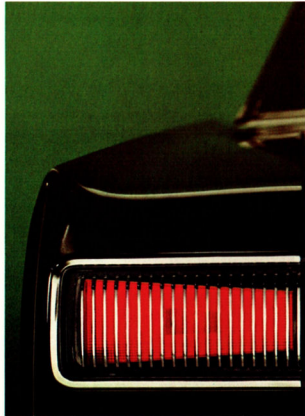
Pass
the
word

...Over
and
out

A signal success—that's Coronet's broad, bright look aft. Tail lamps, brake and turn signals blend smoothly into the sleek lines. But other drivers read your message loud and clear when you light them up. Another bright idea for Coronet!

Don't surrender—
just give up your
high-priced ways

You say you'd like to get behind a car that looks this rich and successful? In Coronet's case, the price of success is easy to pay. (You see, the only thing down-to-earth about Coronet is its cost.) And that's a sure way to collect a following.



Dress
right

At
ease

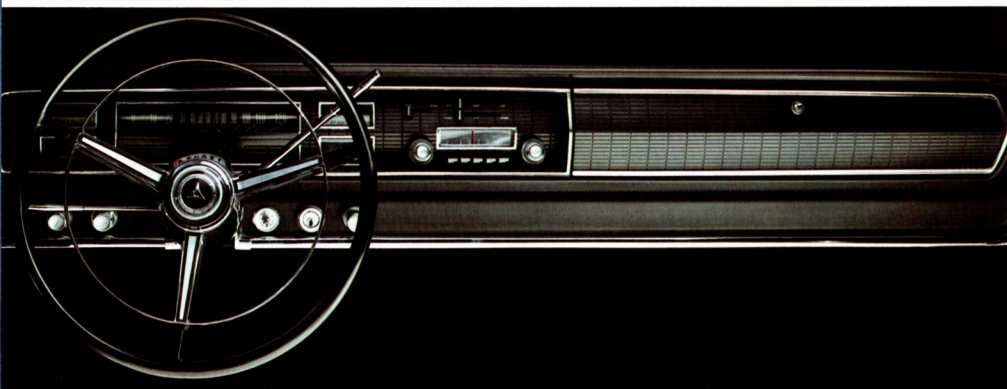
Inspect Coronet's command post. Step in and learn what rest and relaxation really mean. The password is "comfort." The countersign, "convenience." Check those man-sized quarters. "Take 10" in Coronet's foam-padded seats, with either bench or buckets (divided by pull-down armrest* or console*) up front. Occupation duty never looked so great.

*Center cushion/armrest, standard; console optional, at no extra cost, in Coronet 500 hardtop and convertible. Either cushion or console optional, at extra cost, in Coronet R/T models.

Coronet ambushes
ho-hum hardtops
in the interior

Sedans and convertibles, too. Remember when cars that didn't cost a mint had interiors that were charitably termed "serviceable." (And looked it.) Some people still build cars like that, but it's off limits for Coronet. Dungarees are for frumps! We outfit every Coronet with full-dress interiors.

Coronet 500 hardtop/convertible interior.



Occupy
these lines,
swingers

Take up your position in Coronet '67 and prepare for an invasion. By friends who snap to attention when you parade your new Coronet. (It's like having your own recruiting office for Dodge Rebellion volunteers.) Who can blame 'em? They're stuck with look-alikes that, next to Coronet's long, smooth styling, suddenly seem drab. You'll find Coronet stands out in any company.

Sign up
for a tour
with Coronet



Prepare for action

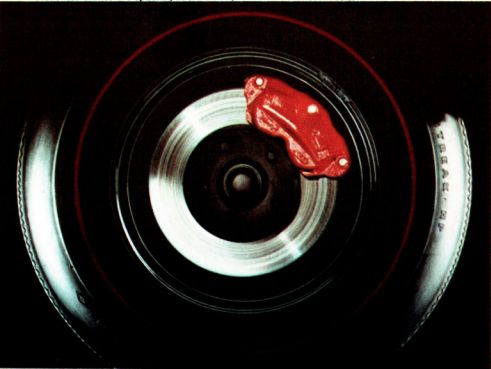
Issue orders, and a Coronet will appear, front and center, equipped just right for your kind of action. If the terrain you travel calls for extra control and braking, for example, specify the Rallye suspension* and/or special brakes. Standard impact-absorbing steering column and wheel and headrests* are typical of the Coronet safety features available.

*Optional, at extra cost.

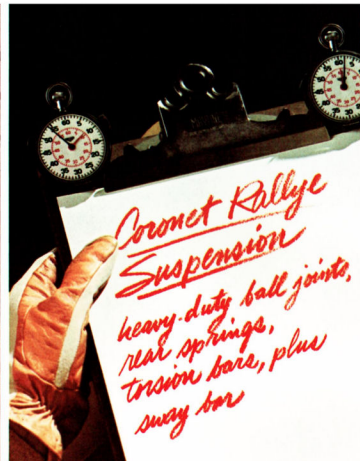
Front seat headrests are optional, at extra cost, in all bucket seat models.



Front disc brakes are optional, at extra cost, for all V8 Coronet models.



Rallye suspension includes heavy-duty springs, torsion bars, ball joints and sway bar.



3-spoke simulated wood-grain wheel, optional at extra cost.



Move out front with Coronet

Pick from a battery of the finest engines going: one Six and six V8s in varying calibers. The power plant lineup runs up to the optional 426 Hemi V8 and 440-Magnum V8* blockbusters. Back your engine selection up with a three-speed manual, four-speed stick** (toughest in the business), or famous smoothly shifting TorqueFlite automatic; see Selector list on inside back cover.

*Magnum V8 standard, Hemi V8 optional at extra cost. Both available on Coronet R/T models only.
**Optional, at extra cost.
†Std., R/T models; optional on other Coronet models.



Advance and be recognized in Coronet R/T

There's no mistaking this one-of-a-kind cruiser when you see it on the street. The Coronet R/T models (hardtop and softtop) pack a new Dodge 440-cubic-inch 4-barrel Magnum V8 under the hood. It's standard equipment.* Your choice of 4-on-the-floor or TorqueFlite automatic to handle the horses. Bucket seats, special air-scoop hood, Red Streak nylon tires—all standard on R/T (plus a big bundle more, besides). The Dodge Rebellion can use a few recruits who want the extra performance, the extra good looks of this brand-new "R/T." You could be one of them.

*Dodge 426 Hemi V8, with dual 4-barrel carbs, available as an optional engine choice, at extra cost.

STANDARD EQUIPMENT

Acrylic enamel in choice of 18 standard[®] colors

Special Coronet R/T body side paint stripe in choice of: white, black, red or blue (upper and lower) (also available without paint stripe)

All-vinyl interior in choice of:
blue, red, copper, black, gold/black or white/black
Stainless steel hubcaps
Glove box lock
Cigarette lighter
Map and courtesy light (R/T convertible)

Front bucket seats with full-volume foam padding
Rear bench seat cushions with 1½" foam padding
Front armrests
Rear armrests and ashtrays

Carpeting, front and rear
Heater/defroster
3-spoke steering wheel with half horn ring
Magnum V8 (4-bbl.), dual exhaust (N.A., on other Coronet models)
TorqueFlite automatic transmission (column-mounted selector lever)

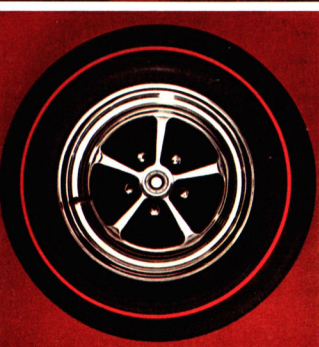
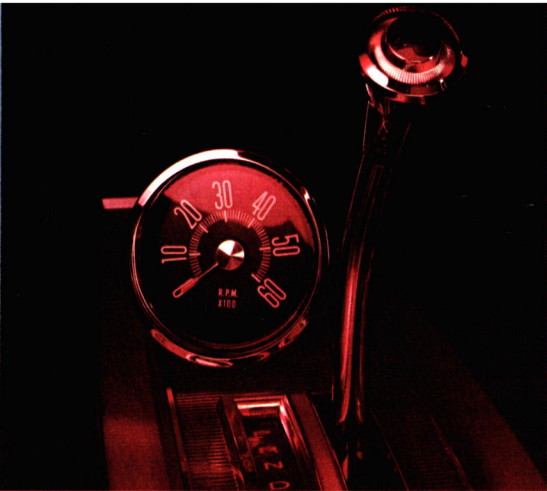
Long life major chassis lubrication (good for 36,000 miles)
Spare tire cover (tire is carried below trunk floor)
Pocket panel lights (R/T convertible)
Dome light (R/T hardtop)

Power convertible top
Black, blue or white convertible top
Convertible rear window, flexible, air-tempered glass
Curved and tempered side glass
Vinyl-coated trunk mat

Special R/T hood, with air-scoop design
7.75 x 14-2-ply Red Streak nylon tires
Heavy-duty torsion bars
Heavy-duty ball joints
Heavy-duty shock absorbers

Heavy-duty rear springs
Sway bar
*A special, buffed, silver-metallic paint is offered as an optional body color, at extra cost, on all Coronet R/T models.
Standard safety equipment for Coronet R/T models is shown on back cover of this catalog.

Coronet R/T is also available as a convertible model.



CORONET 500

STANDARD EQUIPMENT
Acrylic enamel in choice of 18 standard* colors
Interiors in choice of: All-vinyl (standard, Coronet 500 hardtop and convertible); blue, red, copper, black, gold/black, or white/black

Cloth-and-vinyl (standard, Coronet 500 SE sedan); blue, turquoise, black or gold/black
Fender-mounted turn signal indicator lights
Deluxe wheel covers

Cigarette lighter
Glove box lock
Front bench seat with 2 1/4" foam cushion padding (500 SE sedan)
Moulded, full-volume, foam-padded front bucket seats with center cushion and pull-down

armrest (Coronet 500 convertible and hardtop)
Rear armrests and ashtrays
Rear bench seat with 1 3/4" foam cushion padding

Carpeting, front and rear
Heater/defroster
3-spoke steering wheel with half horn ring
Power convertible top
225-cu.-in. 6-cylinder or 273-cu.-in. V8

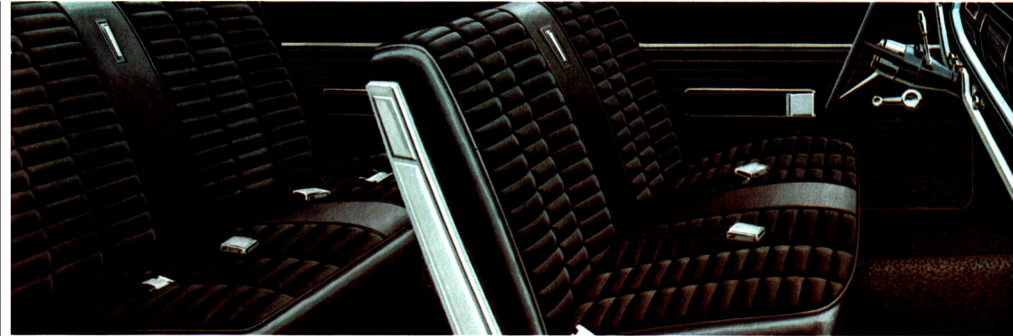
3-speed manual transmission
Long life major chassis lubrication (good for 36,000 miles)
Vinyl-coated trunk mat
Spare tire cover (tire is carried below trunk floor)

Pocket panel lights (convertible)
Black, blue or white convertible top
Convertible rear window, flexible, air-tempered glass
Curved and tempered side glass

*A special, buffed, silver-metallic paint is offered as an optional body color, at extra cost, on all Coronet 500 models.
Standard safety equipment for Coronet 500 models is shown on back cover of this catalog.



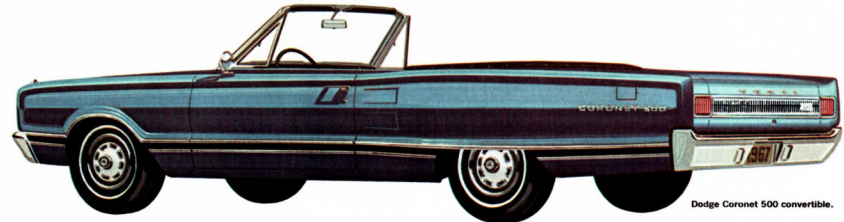
Dodge Coronet 500 2-door hardtop.



Cloth-and-vinyl interior, Coronet 500 SE 4-door sedan.



Dodge Coronet 500 SE 4-door sedan.



Dodge Coronet 500 convertible.

CORONET 440

STANDARD EQUIPMENT

Acrylic enamel in choice of 15 standard colors

Interior in choice of:
Cloth-and-vinyl (standard, Coronet 440 sedan); blue, turquoise, tan or black

All-vinyl (standard, Coronet 440 hardtop); blue, red, copper, black or white/black

All-vinyl (optional, Coronet 440 sedan only); blue, black, tan or red

Stainless steel hubcaps
Glove box lock
Cigarette lighter

Front bench seat cushion with 2½" foam padding
Front armrests
Rear bench seat cushion with 1¾" foam padding
Rear armrests and ashtrays
Carpeting, front and rear

Heater/defroster
3-spoke steering wheel with half horn ring
225-cu.-in. 6-cylinder (N.A. in 3-seat station wagon) or 273-cu.-in. V8
Curved and tempered side glass

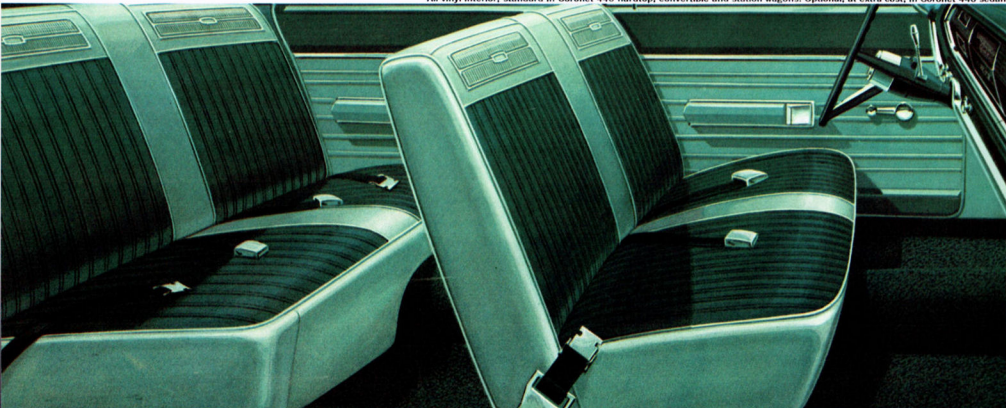
3-speed manual transmission
Long life major chassis lubrication (good for 36,000 miles)
Spare tire cover (tire is carried below trunk floor)

Pocket panel lights (convertible only)
Power convertible top
Black, blue or white convertible top
Convertible rear window, flexible, air-tempered glass

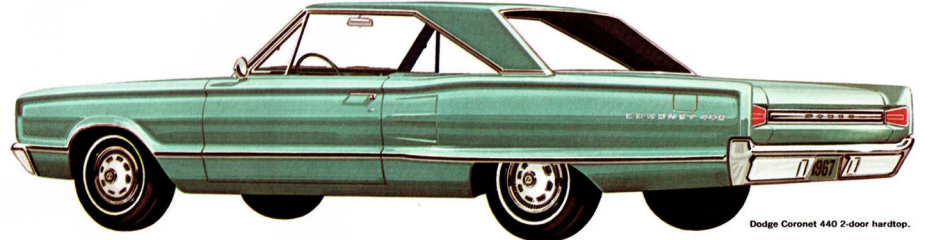
*A special, buffed, silver-metallic paint is offered as an optional body color, at extra cost, on all Coronet 440 models.
Standard safety equipment for Coronet 440 models is shown on back cover of this catalog.



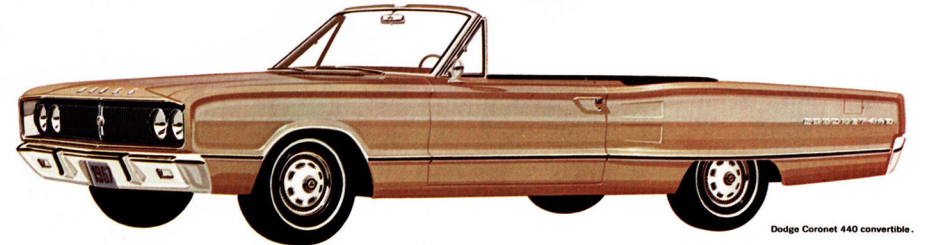
All-vinyl interior, standard in Coronet 440 hardtop, convertible and station wagons. Optional, at extra cost, in Coronet 440 sedan.



Cloth-and-vinyl interior, standard in Coronet 440 sedan.



Dodge Coronet 440 2-door hardtop.



Dodge Coronet 440 convertible.



Dodge Coronet 440 4-door sedan.

Coronet 440 station wagons are shown elsewhere in this catalog.

CORONET DELUXE

STANDARD EQUIPMENT

Acrylic enamel in choice of 15 colors
Interiors in choice of: blue, tan or red
Stainless steel hubcaps
Glove box lock

Cigarette lighter

Front seat with ¾" foam padding
Front armrests

Rear armrests with ashtrays

Color-keyed rubber floor mats, front and rear

Heater/defroster

3-spoke steering wheel with horn button

225-cu.-in. 6-cylinder or 273-cu.-in. V8

3-speed manual transmission

Curved and tempered side glass

Long life major chassis lubrication (good for 36,000 miles)

Spare tire cover (tire is carried below trunk floor)

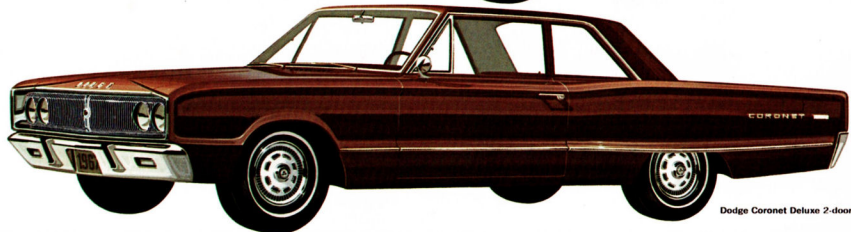
Standard safety equipment for Coronet Deluxe models is shown on back cover of this catalog.



Cloth and vinyl interior, standard in Coronet Deluxe sedans.



Dodge Coronet Deluxe 4-door sedan.



Dodge Coronet Deluxe 2-door sedan.

Coronet Deluxe station wagon is shown on the following pages.



CORONET STATION WAGONS

STANDARD EQUIPMENT
Acrylic enamel in choice of 15 colors—Coronet and Coronet Deluxe (18 standard* colors—Coronet 440)
Interior in choice of: All-vinyl (standard, Coronet and Coronet Deluxe); blue, red or tan

All-vinyl (standard, Coronet 440); blue, red, tan or black
Stainless steel hubcaps
Glove box lock
Cigarette lighter (optional, Coronet Series wagon)

Front bench seat with ¾" foam padding (Coronet and Coronet Deluxe wagons)
Front bench seat with 2¼" foam padding (Coronet 440)
Rear bench seat with 1¾" foam padding (all wagon models)

Front armrests
Rear armrests with ashtrays

Black rubber floor mat, front and rear (Coronet wagon)

Color-keyed rubber floor mat, front and rear (Coronet Deluxe wagon)

Carpeting, front and rear (Coronet 440 wagon)
Heater/defroster

3-spoke steering wheel with horn button (Coronet and Coronet Deluxe)

3-spoke steering wheel with half horn ring (Coronet 440)

225-cu.-in. 6-cylinder (N.A. Coronet 440, 3-seat wagon) or 273-cu.-in. V8 3-speed manual transmission

Spare tire cover (tire is carried upright in quarter panel stowage)

Rear bumper guards and step pads (Coronet 440, 3-seat wagon)

Power tailgate window (Coronet 440, 3-seat wagon)

Rear sill latch handle (Coronet 440, 3-seat wagon)

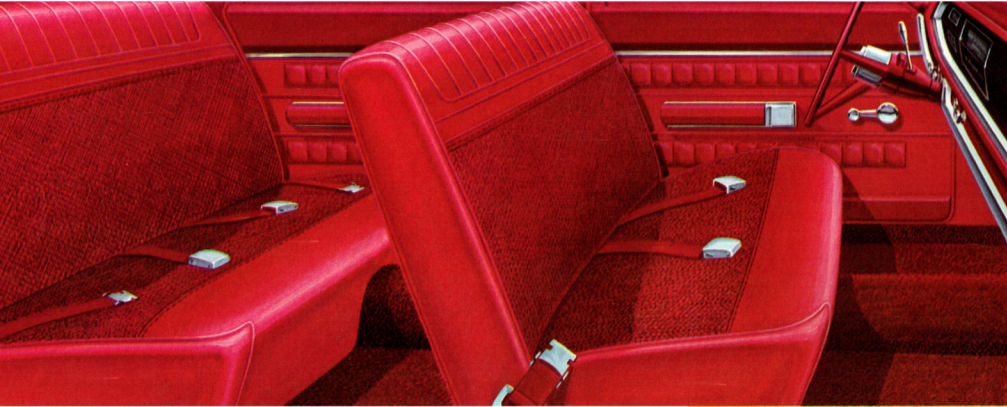
Cargo area light (Coronet 440, 3-seat wagon)

Curved and tempered side glass

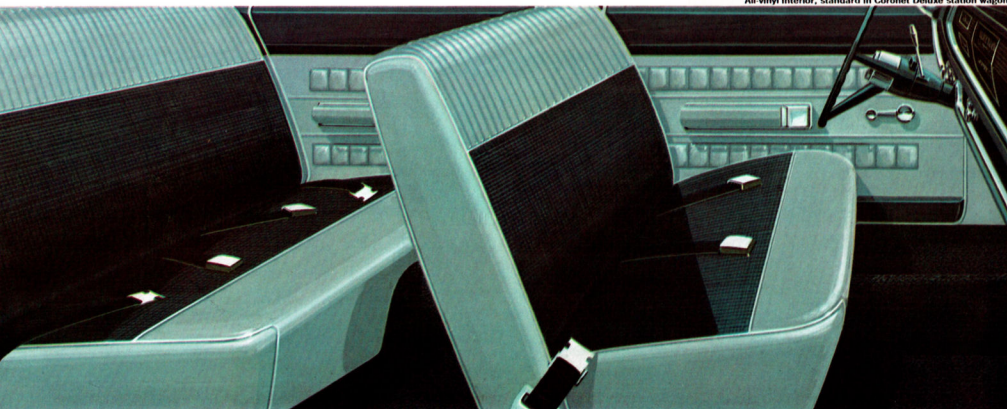
In addition to the standard safety equipment, shown on back cover of this catalog, Coronet station wagons also include:

Right, outside, manual rearview mirror
Lap belts for 3rd seat (Coronet 440 3-seat wagons)
*A special, buffed, silver metallic paint is offered as an optional body color; at extra cost, on Coronet 440 station wagons.

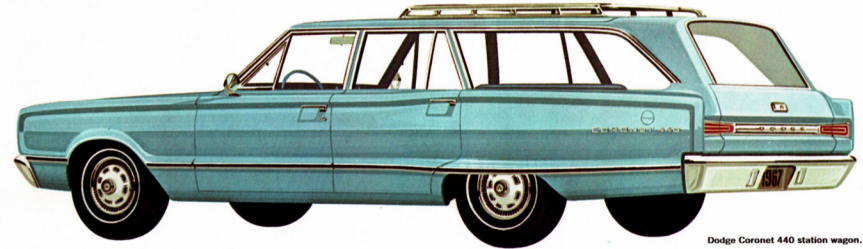
Coronet station wagon loading dimensions: Interior length between front seatback and closed tailgate, 91.7". Maximum rear opening height, 30.4". Interior length between second seatback and closed tailgate, 58.4". Rear opening width, 50.0". Maximum cargo volume, 88 cubic feet.



All-vinyl interior, standard in Coronet Deluxe station wagon.



All-vinyl interior, standard in Coronet station wagon.



Dodge Coronet 440 station wagon.



Dodge Coronet Deluxe station wagon.



Dodge Coronet station wagon.

Options, accessories? Check the roll call



CORONET OPTIONS, ACCESSORIES

Some of the optional equipment listed is available only on certain models. Some options are required with certain engines. Your Dodge Dealer will be glad to specify the availability of any option you may be considering.

PERFORMANCE:

318 V8 (2-bbl.)
383 V8 (2-bbl.)
383 V8 (4-bbl.) dual exhaust
426 Hemi V8 (dual 4-bbl.)
TorqueFlite 3-speed automatic transmission (standard on R/T 4-speed manual transmission
Sure Grip differential

Console-mounted tachometer (available on Coronet R/T, 500 hardtop and convertible only)
Trailer-towing package (fully described on opposite page)
 Rallye sponsorship package with sway bar:
Heavy-duty rear springs
Heavy-duty ball joints
Heavy-duty torsion bars (Above items available in package only.)

Front disc brakes (power brakes required)
COMFORT AND CONVENIENCE:
Air conditioning
Center console (a no-extra-cost option that replaces standard center cushion and pull-down armrest with bucket seat in

Coronet 500 hardtop and convertible; N.A. with 3-speed manual transmission) N.A. Coronet 440, Coronet and Coronet Deluxe; extra cost, Coronet R/T

Power brakes

Variable-speed electric windshield wipers (2-speed, electric, standard)
Electric clock

Cigarette lighter (optional, Coronet Series station wagon; standard, all other Coronet models)
Right, outside, manual rearview mirror (standard on Coronet wagons)
Electric window lifts (optional on all hardtops and convertibles—N.A. on other models)

Tinted windshield or windshield and windows
Front center cushion and pull-down armrest with bucket seats (optional on Coronet R/T only; standard, Coronet 500 hardtop and convertible)

Front seat with 2 1/4" foam padding (standard, Coronet 440 and 500 SE; optional on all other models except bucket seat models)

Front bucket seat headrests (available on Coronet R/T, 500 hardtop and convertible only)

Shoulder belts, front (left and right)
Power tailgate windows (standard on Coronet 440, 3-seat wagon; optional on other Coronet wagon models)

Music Master radio, push-button, transistorized

Rear seat speaker (N.A. convertibles and wagons)

Roof luggage rack (station wagons only)

Undercoating and hood insulation

APPEARANCE:

White sidewall tires (Coronet R/T, 500 no extra cost; optional at extra cost on all other Coronet models)

Bumper guards (rear bumper guards and step pads are standard on 3-seat wagon; optional on 2-seat wagons)

Black or white Levant-grain vinyl roof covering (Coronet R/T, 500 and 440 hardtops and 500 SE sedan only)

3-spoke, simulated wood-grained steering wheel with horn bars (optional, Coronet R/T, 500 and 440 models only)
3-spoke steering wheel with full horn ring

Deluxe wheel covers (standard, Coronet 500 models)
"Mag"-type wheel covers
Chromed steel road wheels
Two-tone paint (N.A. convertibles)

Buffed, silver-metallic body paint (optional, Coronet R/T, 500 and 440 models only; N.A. other models)

All-vinyl interior trim (Coronet 440 sedan; standard on 2-door hardtop, convertible and wagons)

LIGHT PACKAGE:

Glove box light
Trunk light (cargo light standard on Coronet 440 3-seat wagon)
Map and courtesy light (standard on convertible models)
(Above items available in package only.)

ENGINES:

225-cubic-inch Six (1-bbl.), 145-hp. Standard on all Coronet 6-cylinder models.
Regular fuel.

273-cubic-inch V8 (2-bbl.), 180-hp. Standard on all Coronet V8 models.*
Regular fuel.

318-cubic-inch V8 (2-bbl.), 230-hp. Optional on all Coronet V8 models.* Regular fuel.

383-cubic-inch V8 (2-bbl.), 270-hp. Optional on all Coronet V8 models.* Regular fuel.

383-cubic-inch V8 (4-bbl.), 325-hp. Dual exhaust. Optional on all Coronet V8 models.*
Premium fuel.
*Except Coronet R/T models.

426-cubic-inch V8 Hemi (dual 4-bbl.), 425-hp. Dual exhaust. Dual

rocker arm shafts. Hemispherical combustion chambers.
Optional on Coronet R/T models only.

Premium fuel.
440-cubic-inch Magnum V8 (4-bbl.), 375-hp. Dual exhaust. Standard on Coronet R/T models.

N.A. other Coronet models. Premium fuel.

TRANSMISSIONS:

3-speed manual transmission. Standard on all Coronet models.*
Shift lever is mounted on steering column. (N.A. with center console or with 383-cu.-in. V8s, Hemi V8, or Magnum V8.)

4-speed manual transmission, console- or floor-mounted. Optional at extra cost with 383-cu.-in. V8s, Hemi V8. A no-extra-cost option for Coronet R/T with Magnum V8 engine.

TorqueFlite, 3-speed automatic transmission with internally actuated parking sprag. Aluminum housing. Water-cooled. Optional at extra cost on all Coronet models. Standard on Coronet R/T. Column- or console-mounted selector lever.
*Except Coronet R/T models.

REAR AXLE RATIOS:

A number of rear axle ratios are offered with each Coronet engine and transmission team. Standard ratios have been carefully chosen to provide a balance of performance and economy. However, for more specialized applications, your Dodge Dealer can order your Coronet delivered with a more suitable ratio. You will also want to consider the many advantages offered by the Dodge Sure Grip differential. In sand, snow or mud, power is transferred to the rear wheel having the better traction.

DIENSIONS:
Wheelbase, 117.0". Overall length, 203.0" (2-seat wagons), 207.9" (3-seat wagon, 210.4"). Width, 75.3". Tread: front, 59.5"; rear, 56.5".

SUSPENSION:

All Coronet models have torsion bars and ball joints in front, asymmetrical leaf springs in the rear. Oriflow shock absorbers at each wheel. The entire suspension is rubber-isolated.
A Rallye suspension

package, with sway bar, is available for all Coronet models.*
*Standard on R/T models.

TIRES:

7.35 x 14 standard on all models (except Coronet R/T and wagons). 7.75 x 14 Red Streak nylon cord, standard, R/T models. Optional, all Coronet models except wagons. 7.75 x 14 standard on 6-cylinder, 2-seat wagons; optional on Coronet V8 models (except wagons). 8.25 x 14 standard on Coronet V8 2- and 3-seat wagons; optional on 6-cylinder, 2-seat wagon. White sidewall tires optional on all Coronet models and optional at no extra cost on Coronet R/T.

BRAKES:

Hydraulic, servo-contact, self-energizing, self-adjusting. Dual braking system. Bonded lining. Total lining area, 195.2 sq. in. for all V8 models and V8 or 6-cylinder wagons (all 6-cylinder models, except wagons, have 165.9 sq. in.). Parking brake is foot-pedal operated, with hand-released lever and mechanically actuating shoes on each rear wheel. Master cylinder/parking brake warning light is standard on all Coronet models. Front disc brakes optional with V8 engines.

ELECTRICAL SYSTEM:
Battery: 12-volt, 6-cell, 48-amp-hr with 225-cu.-in. Six, 273-cu.-in. V8 and 318-cu.-in. V8. 59-amp-hr with 383-cu.-in. V8 and 70-amp-hr with Hemi V8, and Magnum V8. Alternator: 35-amp is standard on all Coronet models.

CAPACITIES:

Cooling systems: 225-cu.-in. Six, 13 quarts. 273-cu.-in. V8, 19 quarts. (Both including heater.)
Crankcases: 4 quarts (5 quarts when changing oil filter).
Fuel: 19 gallons (including station wagons).

Here's how Coronet measures up



TRAILER-TOWING PACKAGE:

The trailer-towing package for Coronet models* is required for towing trailers with a loaded gross weight of 2,000 lbs. and not exceeding 4,000 lbs. A frame-type, load-equalizing hitch is required for trailers having a loaded, tongue weight of 200 lbs. (Hitch not supplied by Dodge.)

Basic equipment includes: Maximum cooling system with high-capacity radiator. Larger transmission oil cooler. Larger 7-blade fan. Fan shroud. Radiator air seals. 3.23 ratio, heavy-duty performance axle. Heavy-duty suspension, front and rear, with antisway bar. Special 11"-diameter, heavy-duty brakes (not self-adjusting). Heavy-duty, turn

signal flasher. Heavy-duty, stop light switch. Wide rim, 5.5 K wheels.

*Trailer-towing package is not available on Coronet R/T models; or Coronet models equipped with 225-cu.-in. Six or 273-cu.-in. V8; or with 3-speed or 4-speed manual transmission.

The following, extra-cost equipment is also required: TorqueFlite automatic transmission. 7.75 x 14 tires (8.25 x 14 nylon tires on Coronet wagons). 318-cu.-in. V8 engine.

Recommended, additional, optional equipment for trailer towing: Sure Grip differential. High-output, 45-amp alternator. Heavy-duty, 70-amp-hr battery, with rubber separators and battery breakers. Power steering. Power brakes. Air conditioning. 383-cu.-in. (2-bbl. or 4-bbl.) V8 engine.



On guard!

HERE'S HOW DODGE'S 5-YEAR, 50,000-MILE ENGINE AND DRIVE TRAIN WARRANTY PROTECTS YOU: Chrysler Corporation warrants all of the following vital parts of its 1967 cars for 5 years or 50,000 miles, whichever comes first, during which time any such parts that prove defective in material and workmanship will be replaced or repaired at any Dodge (or Imperial, Chrysler or Plymouth) Authorized Dealer's place of business without charge for such parts or labor: engine block, head and internal parts, intake manifold, water pump, transmission case and internal parts (excepting manual clutch), torque converter, drive shaft, universal joints, rear axle and differential, and rear wheel bearings, provided the owner has the engine oil changed every 3 months or 4,000 miles, whichever comes first, the oil filter replaced every second oil change, and the carburetor air filter cleaned every 6 months and replaced every 2 years; and every 6 months furnishes evidence of this required service to such a dealer and requests him to certify (1) receipt of such evidence and (2) the car's mileage. Simple enough for such important protection.

Above warranty not applicable to cars equipped with 426-cu.-in. Hemi V8 engines. The engine and drive train warranty for a Hemi V8-powered vehicle is for 12 months or 12,000 miles, provided the car is not subjected to any extreme operation or the engine or drive train modified in any manner.

STANDARD SAFETY EQUIPMENT ON EVERY 1967 DODGE CORONET INCLUDES:

- Impact-absorbing steering column and wheel
- Turn signals
- Backup lights
- Padded instrument panel
- Padded sun visors
- Master cylinder/parking brake warning light
- Windshield wipers, 2-speed, electric; parallel action, airfoil-type blades with anti-glare finish
- Windshield washers, electric
- Hazard warning system
- Safety-Action inside door release levers
- Safety-Rim wheels
- Left, outside, remote-control rearview mirror
- Prismatic, day/night, inside rearview mirror with double ball-joint safety mount
- Retractable, front lap belts
- Rear lap belts.

THE Dodge Rebellion
Wants
YOU

Dodge

DODGE DIVISION



CHRYSLER
MOTORS CORPORATION

All product illustrations and specifications herein are based on authorized information. Although all descriptions are believed correct at publication appeared, accuracy cannot be guaranteed. Some of the equipment shown on product illustrations is optional, at extra cost. Dodge Division reserves the right to make changes from time to time, without notice, of substitution, in price, specifications, color and materials, and to change or discontinue models.