

Ford Falcon GL
Ford Fairmont
Ford Fairmont Ghia



Ford Falcon. A world class family car.

The new Ford Falcon is an excitingly different Australian family car. A new size that's shorter and sleeker on the outside, yet designed for efficient use of space so that now, there's actually more passenger room inside the car.

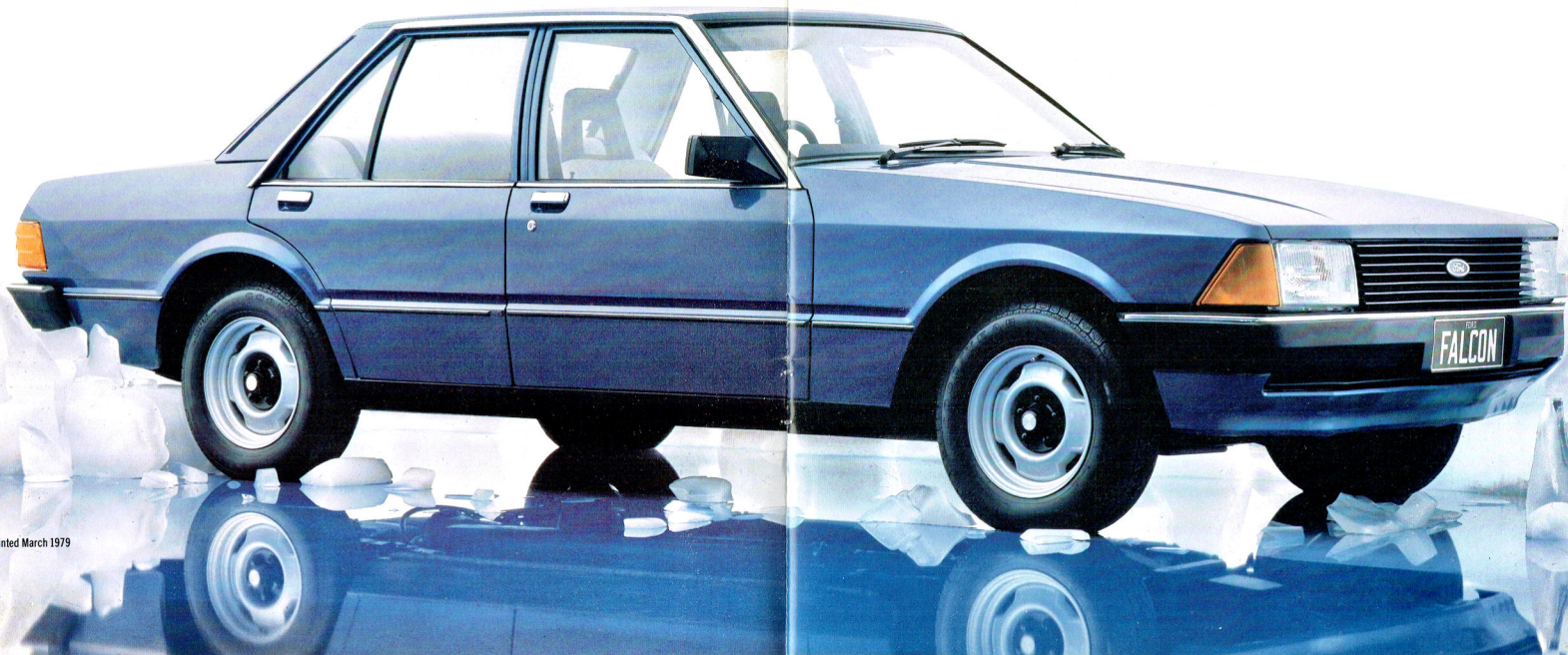
Inside and out, you'll find the new Falcon is vastly improved. Better designed. Easier to maintain. And less expensive to run.

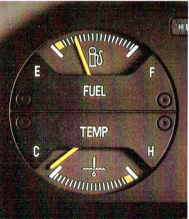
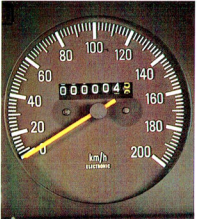
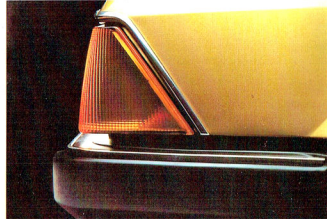
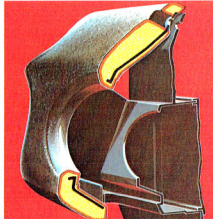
Whether you're driving across town or across Australia, the new Ford Falcon is designed to take you there in style and comfort.

Designed for today's driving conditions.

Looking at the new Ford Falcon range, the clean cut styling and practical design influence of Europe is immediately apparent. But there's much more to this new car than first meets the eye. Just about everywhere you look you'll find evidence of design priorities which reflect the needs and wants of today's drivers.

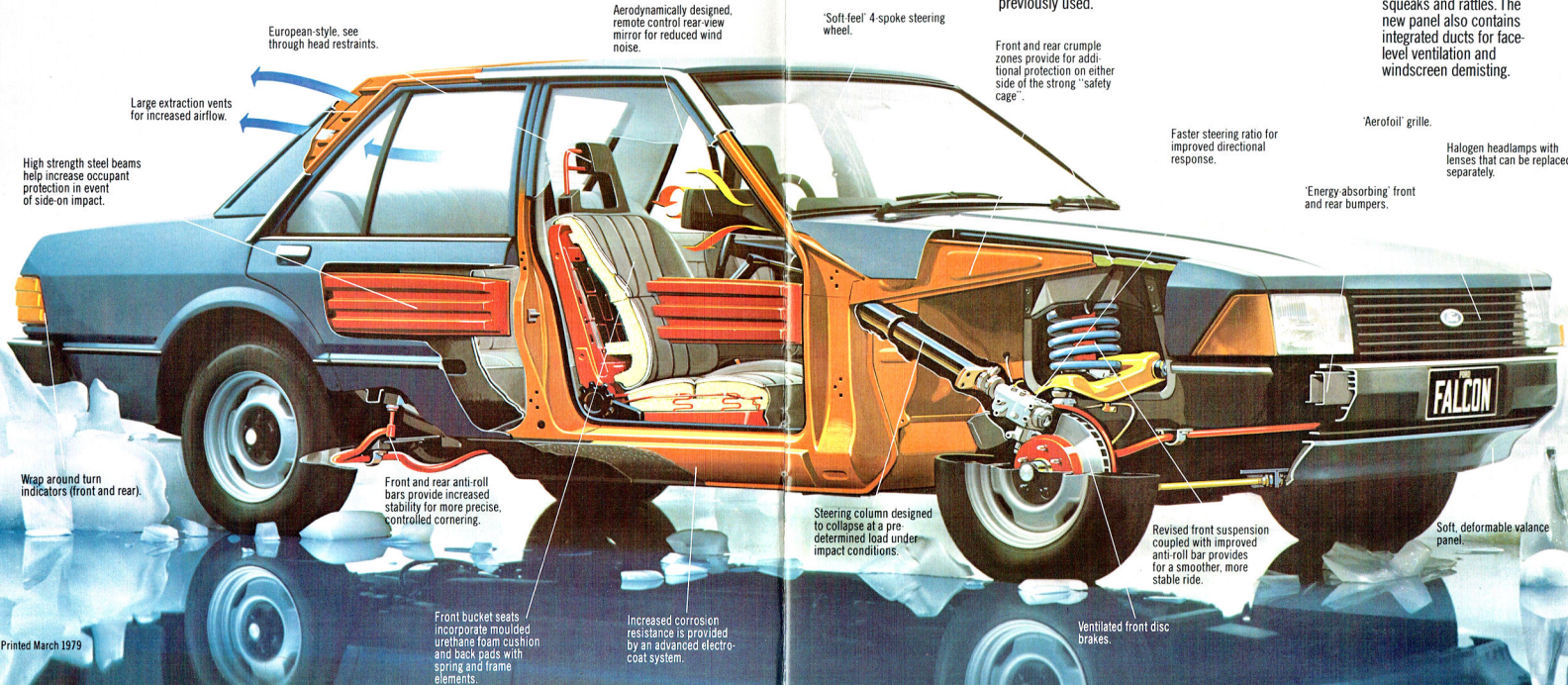
A trimmer, lighter vehicle means improved manoeuvrability and easier handling. The spacious interior offers a high level of comfort and quietness. Handling and ride have been improved, to build on Falcon's tradition as a great Australian road car. The larger glass area provides for better vision for driver and passengers. And in line with world trends, the Falcon is designed to use less fuel yet at the same time to deliver better performance through a revised range of engines. Cost of ownership is becoming increasingly important today and the new Falcon is specifically designed to reduce such costs through easier maintenance, while more advanced manufacturing processes, quality control, improved paintwork and anti-corrosion treatment all contribute to a more reliable and durable car.





Advanced automotive technology.

1. The one-piece, full-foam crash pad and the instrument binnacle are moulded entirely from a special polyurethane foam which is soft inside yet forms its own solid, hard-wearing, easy-care surface.
2. Lightweight, tough 'energy-absorbing' bumpers designed to help prevent minor parking and impact damage. While the valance panel under the front bumper is now made of soft, deformable plastic to help reduce damage from high kerbs.
3. The conventional cable operated speedometer mechanism has been replaced with an electronic pulse system designed to provide improved standards in accuracy and reliability.
4. An electronic fuel sender system (similar to those used in Boeing 727 jet aircraft) is designed not only to give more accurate readings of fuel levels, but to provide a more robust system than the mechanically operated device previously used.
5. New 'Taga' door locks. Smoothly operated and secure without the use of heavy springs. Rear Taga locks incorporate a 'child-proof' setting, which prevents the rear doors from being opened from inside the car.
6. All instrument wiring is retained and protected by channels moulded into the instrument panel. This is designed to improve reliability by greatly reducing the potential for wiring loom pinching and abrasion and the development of squeaks and rattles. The new panel also contains integrated ducts for face-level ventilation and windscreen demisting.



European style, see through head restraints.

Aerodynamically designed, remote control rear view mirror for reduced wind noise.

'Soft-feel' 4-spoke steering wheel.

Front and rear crumple zones provide for additional protection on either side of the strong "safety cage".

Large extraction vents for increased airflow.

High strength steel beams help increase occupant protection in event of side-on impact.

Faster steering ratio for improved directional response.

'Aerofoil' grille.

Halogen headlamps with lenses that can be replaced separately.

'Energy absorbing' front and rear bumpers.

Wrap around turn indicators (front and rear).

Front and rear anti-roll bars provide increased stability for more precise, controlled cornering.

Steering column designed to collapse at a pre-determined load under impact conditions.

Revised front suspension coupled with improved anti-roll bar provides for a smoother, more stable ride.

Soft, deformable valance panel.

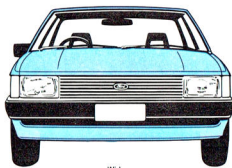
Front bucket seats incorporate moulded urethane foam cushion and back pads with spring and frame elements.

Increased corrosion resistance is provided by an advanced electro-coat system.

Ventilated front disc brakes.

Fuel Economy plus Performance.

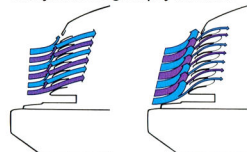
Upgraded engine characteristics, reduced vehicle weight and better aerodynamic design all play a vital role



Wide 1559 mm (61.4") front track

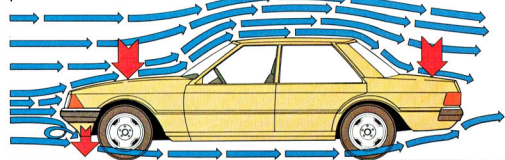
The long wheelbase, revised spring rates and short front and rear body overhang all help to maintain Falcon's traditional high level of ride and comfort.

Revised geometry suspension now includes new spring and damper settings. And more effective use of anti-roll bars provides increased stability and reduced body roll for more precise,



Lowered front grille allows air to pass through the radiator at low speed but diverts excess air over the nose of the vehicle when travelling at higher speeds.

in the improved fuel economy and better performance of the new Falcons.



Improved aerodynamics including an increased down-thrust factor, provides for a smoother, more stable ride.

3.3 and 4.1 litre 6-cylinder engines

Dynamometer trials and computer analysis have led to a revised induction system and cylinder head resulting in increased power and more efficient fuel usage in both the 3.3 litre and 4.1 litre 6-cylinder engines.

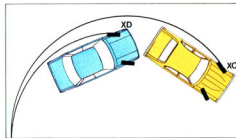
4.9 and 5.8 litre V8 engines

Electronic ignition in both the 4.9 litre and 5.8 litre V8 engines is designed to provide more consistent and efficient fuel combustion. While viscous-clutch engine cooling fans are designed to rotate at less than full engine speed under all but very hot conditions thereby helping to improve fuel economy and reduce engine noise and vibration.

Ride, Handling and Manoeuvrability.

Falcon's wide track, long wheelbase, shorter body and revised suspension are all designed with one aim in mind...to provide a well-balanced combination of comfort and control.

Specific improvements include a wider front track for increased stability and revised steering geometry designed to provide a 10% faster steering ratio for improved directional response (fewer turns lock to lock).

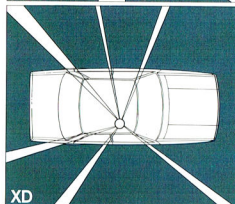
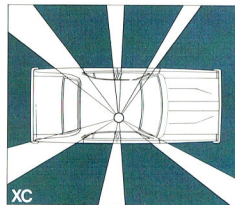


Tight 11.5 m (37.8 ft.) turning circle for improved manoeuvrability and ease of parking.

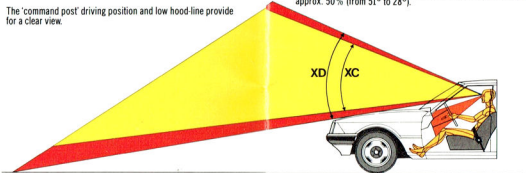
Protection for you and your passengers.

As well as the improved handling characteristics and overall responsiveness of the new Falcons, there are a number of other important features of the car which are designed to help keep you out of trouble. Driver visibility is aided by a 20% increase in window area (over previous Falcon models), quartz halogen headlights, a large area remote control exterior rear-view mirror and an

The 'command post' driving position and low hood line provide for a clear view.



Driver visibility is aided by a 20% increase in glass area over the previous model. Total obscured vision zone has been reduced by approx. 50% (from 51° to 28°).



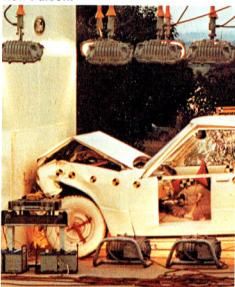
electric rear window demister* Wrap around front and rear turn indicators are clearly visible from the side as well as the front and rear of the car.

The new Falcons also provide a number of features designed to improve driver and passenger protection in the event of an accident. Side doors are fitted with deep-section, high strength steel beams to help guard against intrusion into the passenger compartment in the event of a side-on impact. Front and rear crumple zones

*Electric rear window demister is optional at extra cost on Falcon GL, Wagon.

are designed to deform progressively on impact to help reduce damage to the passenger compartment. A one-piece full foam crush pad improves protection for front seat occupants.

Rear door locks with 'child-proof' setting and hazard warning flashers are among some of the other items which are designed to help you and your passengers feel more secure in your new Falcon.



Reliability and Serviceability.

One good way to put some of the pleasure back into motoring is to take out some of the increasing costs. The new Falcon range sets out to do just this by providing cars which are designed to be more reliable and easier and less expensive to service. Features designed to improve reliability include the one-piece instrument panel; the electronic fuel gauge sender system; the electronic speedometer and the one-piece door seals for better protection against dust and water entry.

A number of components have been redesigned for easier, less frequent servicing in order to reduce maintenance costs. For example, more instruments and controls are serviceable from the front of the instrument panel and the battery has been designed to consume less distilled water and therefore less prone to contamination. Energy absorbing bumpers, and headlamp lenses that can be replaced separately help to reduce the cost of minor impacts.

In fact, the routine maintenance schedule has been revised to significantly reduce costs over an extended period of 80,000 kilometres.



Corrosion Protection.

To help protect your new car, an advanced form of electrocoat system provides increased corrosion resistance and improved paint adhesion.

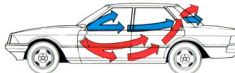
Aluminised wax and zinc rich primer are applied to vulnerable areas of the body while new acid resistant paints give improved durability and help maintain that 'new car' look longer. Prior to the application of the final coat of paint, vulnerable areas of the lower body are given a special coating of a PVC plastic to help protect them from stone damage. Plastic splash shields inside the front and rear wheel houses help reduce build up of corrosion inducing deposits.



Body totally immersed to coat the entire body.

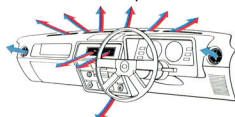
Comfort for Australian Conditions.

Inside the spacious interior of the new Falcon, the comfort of the occupants is well catered for. A more efficient, 3-speed fan-based ventilation system and larger air extraction vents in the rear pillars increase air flow by approximately 25% over the previous model. The 'hilo' control setting means

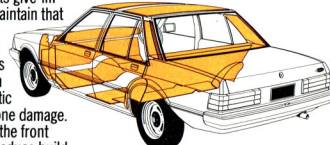


you can have cool air on your face and warm air on your feet to help keep you warm but alert on long trips. There is an eyeball vent on each side of the instrument panel plus centre vents and floor vents for driver and front seat passenger.

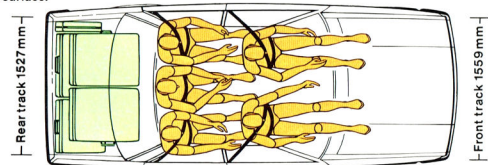
For more effective windshield demisting, there are now vents across the width of the crash pad.



When air conditioning (optional at extra cost) is fitted with floor-mounted transmissions, ducting to the rear compartment is now standard for the increased comfort of the rear seat passengers.



Extensive use of noise reducing insulation materials provides for a quieter and more relaxing driving environment.



Interior dimensions Inside the new Falcon there is ample room to accommodate 5 adults comfortably.

Front leg room	1047 mm (41.2")
Rear leg room	982 mm (38.7")
Rear shoulder room	1519 mm (59.8")
Rear shoulder room	1520 mm (59.8")

Front headroom	956 mm (37.6")
Rear headroom	956 mm (37.6")
Luggage capacity	427 m ³ (15.1 ft. ³)

Printed March 1979



Ford Falcon GL. A world class family car without a world class price.

GL

When you consider the striking design, comprehensive feature list, handling, performance, ride, comfort and spaciousness of the new Falcon GL and then consider that it costs around the same as some smaller cars, it represents outstanding value for money. In the tradition of the great Australian road car the new Falcon GL has been designed with the driver and the open road in mind. But now traditional Falcon performance, ride and handling are

enhanced by better fuel economy, more comfort and features. The standard 3.3 litre six cylinder engine has been improved to deliver more horsepower and yet, when combined with the reduced overall vehicle weight and new aerodynamic design, better fuel economy is achieved.

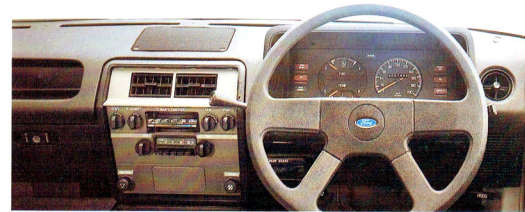
Despite the compact, easy-to-park exterior of the new Falcons, inside you'll find plenty of comfortable space for 5 adults with new reclining front bucket seats, more room for rear seat passengers and plenty of room in the boot for luggage.

The 'soft-feel' 4-spoke steering wheel is designed and positioned for a clear view of the easy-to-read instrumentation. The two steering column control stalks provide fingertip control of windscreen wipers and washers and high/low beam, turn/lane change indicators and horn. Controls are within easy reach of the driver and all switches are designed so that their method of operation is dictated by their shape. Now the driver can feel at a touch whether to pull, turn or slide the control.

A dash-integrated control panel contains heating, ventilation, radio, hazard flasher, cigarette lighter and choke controls. Check out the following Falcon GL features. Remember that they're all standard. Then consider the price and we're sure you'll agree that this is truly a world class family car.

FORD FALCON GL SEDAN STANDARD EQUIPMENT HIGHLIGHTS:

- * 3.3 litre crossflow 6-cylinder engine
- * 3-speed manual column shift transmission
- * Power assisted front disc brakes
- * CR78 S14 steel belt radial ply tyres
- * Styled steel wheels
- * Rectangular quartz halogen headlights
- * Gas strut for 'easy-lift' engine hood
- * Bodyside protection mouldings
- * 'Soft-feel' 4-spoke steering wheel
- * Reclining front bucket seats
- * Front folding centre armrest
- * 'Needle-punch' carpet on passenger compartment floor
- * Rubber mat on luggage compartment floor
- * AM push-button radio with lock-down aerial
- * Power assisted ventilation
- * 3-speed heater/demister
- * Interior courtesy light operated by front doors
- * Electric rear window demister
- * Steering column control stalks for
 - Turn/lane change signals, high/low beam, headlight flasher and horn
 - 2-speed windscreen wipers and windscreen washer
- * Prismatic day/night interior rear-view mirror
- * Right hand side remote control exterior rear-view mirror
- * Dash-mounted hand brake with 'trigger' release
- * Lockable front passenger side glove box and dash integrated parcel tray
- * 'Lights on' warning lamp
- * Hazard flashers
- * Rear door locks with 'child-proof' setting





Ford Fairmont. Outstanding in any company.

The latest Ford Fairmont is a highly appointed car designed to stand out on the road and at any gathering. Elegant, clean European influenced styling, extra performance from the standard 4.1 litre six cylinder engine, smooth ride and confident handling, coupled with a comprehensive feature level make this a most desirable car to own and drive. Fairmont owners enjoy the 'all-weather comfort' of cloth seat facings, the ease of T-bar automatic transmission and the convenient centre console. Further feature highlights include a digital clock including date and month display, left and right hand side remote control exterior rear-view mirrors, tinted band, laminated windscreen, tinted side and rear glass, carpet on the passenger and luggage compartment floors and on the lower area of the doors. The discerning driver who looks for that 'something extra' need look no further than the new Fairmont.



4.9 litre V8 engine, AM push button radio/stereo cassette tape player and power operated windows as shown are optional at extra cost.



FORD FAIRMONT SEDAN STANDARD EQUIPMENT HIGHLIGHTS:

As for Falcon GL sedan but with these different and upgraded features:

- * 4.1 litre crossflow 6-cylinder engine
- * 3-speed T-bar automatic transmission
- * ER78 S14 steel belt radial ply tyres
- * 'Corduroy/crushed Beaumont' cloth seat facings
- * Intermittent windscreen wipers
- * Front centre console with armrest and storage bin
- * Cut pile carpet on passenger compartment floor
- * Rear outboard inertia reel seat belts
- * Tinted-band, laminated windscreen
- * Tinted side and rear glass
- * Dual tone horn
- * Interior courtesy lights operated by all four doors

and with these additional features which are not standard equipment on Falcon GL sedan:

- * Deep-section bodyside protection mouldings
- * Chrome wheel trim rings
- * Bright wheel centre-piece
- * Left hand side remote control exterior rear-view mirror
- * Digital clock with date and month display
- * Vanity mirror in passenger side sun visor
- * Folding centre armrest in rear compartment
- * Outboard passenger grab handles
- * 'Needle-punch' carpet on luggage compartment floor and lower area of doors
- * Courtesy light in glove box and in luggage compartment

FAIRMONT



Ford Fairmont Ghia. The name says it all.

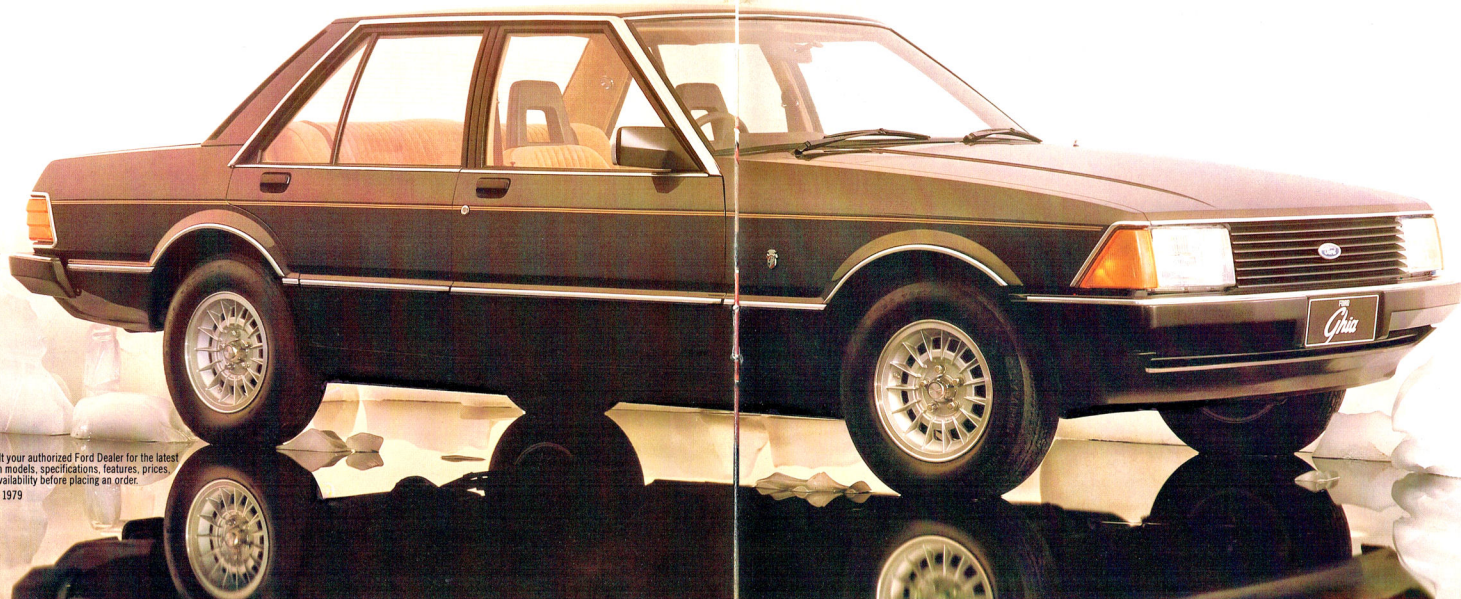
For over sixty years, the name Ghia has been synonymous with some of the world's most luxurious custom built motor cars.

In 1969, Ford Motor Company and Ghia began working together in a partnership which combined their unique experience in engineering and design.

Today, Ghia has become familiar as the name reserved by Ford for some of its most comprehensively equipped and elegant cars.

Against this background, we are proud to introduce the new Ford Fairmont Ghia.

A car with the elegance, luxury, performance and engineering excellence that the name immediately suggests.





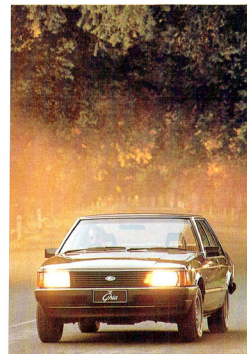
FORD FAIRMONT GHIA STANDARD EQUIPMENT HIGHLIGHTS:

As for Fairmont sedan but with these different and upgraded features:

- * 4-wheel power disc brakes
- * ER70 H14 steel belt radial ply tyres
- * Sports alloy road wheels
- * Limited slip differential
- * 'Crushed velour' cloth seat facings and door trim panels
- * 'Soft-feel' twin spoke steering wheel
- * AM push-button radio with power aerial

Always consult your authorized Ford Dealer for the latest information on models, specifications, features, prices, options and availability before placing an order.

Printed March 1979



and with these additional features which are not standard equipment on Fairmont sedan:

- * Power steering (4.9 and 5.8 litre V8 models only)
- * Comprehensive instrumentation
- * Map pockets on rear of front seats
- * Remote control boot release
- * Bright finish wheel arch mouldings
- * Bodyside pinstripes

New Falcon GL and Fairmont Wagons.

More of what you buy a wagon for.

The design of the new Falcon and Fairmont wagons is immediately and strikingly different.

A shorter, sleeker, aerodynamically styled body makes the new wagons more manoeuvrable and easier to park, yet inside space efficiency has been utilized to such an extent that there's not only more passenger room but more load space as well. The smooth riding long wheelbase has been retained for passenger and driver comfort. And while the front track has been widened to provide greater stability, the turning circle has actually been reduced.

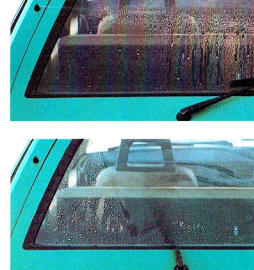
A new, one-piece liftgate makes loading and unloading easier by providing direct access to the wide, deep rear opening. And both the Falcon GL and Fairmont wagon are now fitted with an effective rear window wash/wipe system.

Inside you'll find the same standard of comfortable seating, excellent visibility, clear instrumentation and similar list of features as in the new sedans. On the road you'll notice better performance, good towing power, improved handling and an even quieter ride.

New Falcon GL and Fairmont Wagons from Ford, the Wagonmasters.

FORD FALCON GL WAGON STANDARD EQUIPMENT HIGHLIGHTS:

- * 3.3 litre crossflow 6-cylinder engine
- * 3 speed manual column shift transmission
- * Power assisted front disc brakes
- * ER78 S14 steel belt radial ply tyres
- * Styled steel wheels
- * Rectangular quartz halogen headlights
- * Gas strut for 'easy-lift' engine hood
- * Bodyside protection mouldings
- * 'Soft-feel' 4-spoke steering wheel
- * Reclining front bucket seats
- * Front folding centre armrest
- * 'Needle-punch' carpet on passenger compartment floor
- * Rubber mat on load compartment floor
- * AM push-button radio with lock-down aerial
- * Power assisted ventilation
- * 3-speed heater/demister
- * Interior courtesy light operated by front doors
- * One-piece liftgate with gas struts
- * Rear window wash/wipe system
- * Steering column control stalks for
 - Turn/lane change signals, high/low beam, headlight flasher and horn
 - 2-speed windscreen wipers and windscreen washer
- * Prismatic day/night interior rear-view mirror



- * Right and left hand side remote control exterior rear-view mirrors
- * Dash-mounted hand brake with 'trigger' release
- * Lockable front passenger side glove box and dash-integrated parcel tray
- * "Lights on" warning lamp
- * Hazard flashers
- * Rear passenger door locks with 'child-proof' setting

- * 4.1 litre crossflow 6-cylinder engine
- * 3-speed T-bar automatic transmission
- * Corduroy/crushed Beaumont® cloth seat facings
- * Intermittent windscreen wipers
- * Front centre console with armrest and storage bin
- * Cut pile carpet on passenger compartment floor
- * Rear outboard inertia reel seat belts
- * Tinted-band, laminated windscreen
- * Tinted side and rear glass
- * Dual tone horn
- * Interior courtesy lights operated by all four passenger doors

and with these additional features which are not standard equipment on Falcon GL Wagon:

- * Deep-section bodyside protection mouldings
- * Chrome wheel trim rings
- * Bright wheel centre-piece and wheel nuts
- * Chrome finish roof rack
- * Digital clock with date and month display
- * Electric rear window demister
- * Vanity mirror in passenger side sun visor
- * "Loop pile" carpet on load compartment floor
- * "Needle-punch" carpet on lower area of doors
- * Courtesy light in glove box

FORD FAIRMONT WAGON STANDARD EQUIPMENT HIGHLIGHTS:

As for Falcon GL Wagon but with these different and upgraded features:

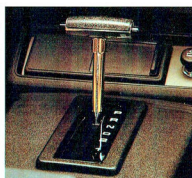


Always consult your authorized Ford Dealer for the latest information on models, specifications, features, prices, options and availability before placing an order.

Printed March 1979



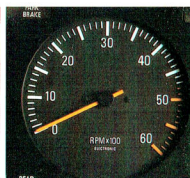
Left hand side remote control exterior rear view mirror.



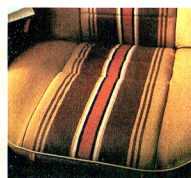
3 speed T bar automatic transmission.



Integrated air conditioning with ducting to rear compartment (floor mounted transmissions only).



Comprehensive instrumentation including tachometer.



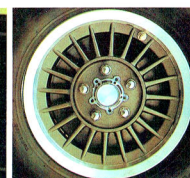
Striped wool blend seat facings.



AM push button radio/stereo cassette tape player.



Long range driving lights.



Volante sports alloy road wheels.

CONVENIENCE EQUIPMENT

		FALCON GL		FAIRMONT WAGON		FAIRMONT GHIA
		SEDAN	WAGON	SEDAN	WAGON	
Integrated air conditioning	(a)	OPT	OPT	OPT	OPT	OPT
Tinted side and rear glass	(a)	OPT	OPT	STD	STD	STD
AM push button radio/stereo cassette tape player	(b)	OPT	OPT	OPT	OPT	OPT
AM/FM push button Multiplex radio/stereo cassette tape player	(c)	OPT	OPT	OPT	OPT	OPT
Digital clock with date and month display	(d)	OPT	OPT	STD	STD	STD
Electric rear window demister		STD	OPT	STD	STD	STD
Intermittent windscreen wipers		OPT	OPT	STD	STD	STD
Rear outboard inertia reel seat belts		OPT	OPT	STD	STD	STD
Left hand side remote control exterior rear view mirror		OPT	STD	STD	STD	STD
Vinyl seat covering		STD	STD	NCO	NCO	N/A
Cloth seat facings - "Corduroy/crushed Beaumont" cloth		N/A	N/A	STD	STD	N/A
- "Crushed velvet"		N/A	N/A	N/A	N/A	STD
- Striped wool blend		OPT	OPT	OPT	OPT	OPT
- Leather		N/A	N/A	N/A	N/A	OPT
Front bench seat (brown vinyl covering)	(d)	NCO	NCO	N/A	N/A	N/A
Rubber floor mats	(e)	NCO	NCO	N/A	N/A	N/A

Illustrated below and far right: Ford Falcon GL Sedan with 'S Pack' (available at extra cost).

A wide range of options.

(Available at extra cost unless otherwise stated.)

To suit the requirements of individual drivers and different driving conditions, there are a number of extra cost options and option packs available for the new Falcon and Fairmont range. These include a special Outback Pack, designed for more rugged conditions, three towing packs and the new 'S Pack', an exciting concept which combines several individual features to bring a more sporty appearance and luxurious feel to your new Falcon GL or Fairmont sedan or wagon.

'S Pack' includes the following different or upgraded features:

- Distinctive paint treatment
- Slotted steel road wheels with chrome trim rings
- Comprehensive instrumentation including speedometer, tachometer, fuel, temperature and oil pressure gauges, volt meter, trip meter, "low fuel" warning lamp and digital clock (digital clock standard equipment on Fairmont)
- Intermittent windscreen wipers (standard equipment on Fairmont)
- Striped wool blend cloth seat facings
- Left hand side remote control exterior rear view mirror (standard equipment on wagons and Fairmont sedan)
- Front spoiler
- Long range driving lights
- ER70 H14 steel belt radial ply tyres

Some options are required to be ordered or used in combination with other options. Always consult your authorised Ford Dealer for the latest information on models, specifications, features, prices, options and availability before placing an order.

Printed March 1979

SPORTS-TYPE EQUIPMENT

		FALCON GL		FAIRMONT WAGON		FAIRMONT GHIA
		SEDAN	WAGON	SEDAN	WAGON	
'S Pack'	(f)	OPT	OPT	OPT	OPT	N/A
Volante sports alloy road wheels	(g)	OPT	OPT	OPT	OPT	N/A
Limited slip differential	(h)	OPT	OPT	OPT	OPT	STD
Long range driving lights		OPT	OPT	OPT	OPT	OPT
Tinted band, laminated windscreen		OPT	OPT	STD	STD	STD
Comprehensive instrumentation	(i)	OPT	OPT	OPT	OPT	STD

POWER EQUIPMENT

4 wheel power disc brakes	(j)	OPT	OPT	OPT	OPT	STD
Power steering	(k)	OPT	OPT	OPT	OPT	OPT
Power operated windows	(l)	N/A	N/A	OPT	OPT	OPT

HEAVY DUTY EQUIPMENT

Heavy duty suspension	(m)	OPT	OPT	OPT	OPT	OPT
Outback Pack	(n)	OPT	OPT	OPT	OPT	OPT
Class I Towing Pack	(o)	OPT	OPT	OPT	OPT	OPT
Heavy Duty Pack for Towing	(p)	OPT	OPT	OPT	OPT	OPT
Class II Towing Pack	(q)	OPT	OPT	OPT	OPT	OPT

APPEARANCE EQUIPMENT

Wheel covers		OPT	OPT	OPT	OPT	N/A
Vinyl roof	(r)	OPT	N/A	OPT	N/A	OPT
Metallic paint	(s)	OPT	OPT	NCO	NCO	NCO

CODES TO CHART: STD means standard equipment OPT means optional at extra cost N/A means not available on that model NCO means no cost option

FOOTNOTES TO CHART:

Please read these notes in conjunction with the notes on engine and transmission combinations and tyre availability.

- (a) Tinted side and rear glass is included with factory fitted integrated air conditioning. Tinted side and rear glass is not included as part of a non factory-fitted air conditioning package. When factory fitted integrated air conditioning is fitted with floor-mounted transmissions, ducting to the rear compartment is standard.
- (b) AM radio/stereo cassette tape player includes lock down aerial and twin speakers mounted in instrument panel.
- (c) AM/FM Multiplex radio/stereo cassette tape player includes lock down aerial and four speakers.
- (d) Digital clock not available when front bench seat is specified. Front bench seat (brown vinyl covering) includes folding centre armrest and is available only with column shift transmission.
- (e) Rubber floor mats are available only when front bench seat is specified.
- (f) The content of the 'S Pack' is described in the commentary opposite.
- (g) Volante sports alloy road wheels are optional at extra cost on Falcon GL and Fairmont models only. Fairmont Ghia has its own special alloy road wheels as standard.
- (h) Limited slip differential is not available with the 3.3 litre engine. It is mandatory at extra cost when the 4.9 litre engine with manual transmission is specified, or when 4 wheel power disc brakes or the 5.8 litre engine is specified.
- (i) Comprehensive instrumentation includes speedometer, tachometer, fuel, temperature and oil pressure gauges, volt meter, trip meter, "low fuel" warning lamp, digital clock. Comprehensive instrumentation is not available when front bench seat is specified.
- (j) 4 wheel power disc brakes are optional at extra cost with 4.9 litre V8 engine and mandatory at extra cost with 5.8 litre V8 engine. Limited slip differential is mandatory at extra cost with 4 wheel power disc brakes.

- (k) Power steering is not available with 3-speed manual column shift transmission but is mandatory at extra cost when the 4.9 litre or 5.8 litre V8 engine and integrated air conditioning are specified in combination. Power steering is standard on Fairmont Ghia when the 4.9 litre or 5.8 litre V8 engine is specified.
- (l) Power operated windows are not available when manual or automatic column shift transmission is specified.
- (m) Heavy duty suspension consists of larger diameter, heavy duty shock absorbers and springs, increased ride height, increased diameter rear stabilizer bar (sedan only). Heavy duty suspension is included as part of the Outback Pack, Heavy Duty Pack for Towing and Class II Towing Pack.
- (n) Outback Pack consists of heavy duty suspension, heavy duty rear axle, heavy duty air cleaner with 6 cylinder engines), engine sump guard and rear axle shock absorber protection plate.
- (o) The Class I Towing Pack is capable of towing loads of up to 307 kgs (2000 lbs) and consists of:
 - Chrome plated gossneck
 - Wiring harness with 7-pin electrical connector.
- (p) The Heavy Duty Pack for Towing is a base option for the convenience of these buyers who already own compatible tow bars and wish to transfer them to their new vehicle. This Pack upgrades the vehicle specification to enable towing of loads up to 1587 kgs (3500 lbs). It consists of:
 - Automatic transmission oil cooler

- Larger cooling capacity heavy duty radiator on 4.9 litre models • Heavy duty suspension which consists of heavy duty shock absorbers and springs, increased ride height and increased diameter stabilizer bar (sedan only) • Wiring harness with 7 pin electrical connector.
- When the Heavy Duty Pack for Towing is ordered, the 4.9 litre or 5.8 litre V8 engine, automatic transmission and ER70 H14 6 ply steel belt radial ply tyres must be specified (at extra cost).
- A Spring Bar Kit is not supplied as part of the Heavy Duty Pack for Towing but is required for a comprehensive towing kit.
- A 1814 kg (4000 lb) rated tow ball is not supplied.
- (q) The Class II Towing Pack upgrades the vehicle specification to tow loads up to 1587 kgs (3500 lbs). It consists of all items in the Heavy Duty Pack for Towing but with these additional features:
 - Load distributing tow bar and body siderail reinforcements
 - Heavy duty towing hitch
 - Chrome plated hitch box cover plate
 - (r) Consult your authorized Ford Dealer to determine the colour availability of vinyl roofs.
 - (s) Consult the Ford Colour Selector or your authorized Ford Dealer to determine which colours are available in metallic paint.



Specifications

(Options are at extra cost unless otherwise stated)

ENGINE AND TRANSMISSION COMBINATIONS	FALCON GL		FAIRMONT		FAIRMONT GHIA	
	SEDAN	WAGON	SEDAN	WAGON		
3.3 litre crossflow 6-cylinder with: 3-speed manual column shift	(1)	STD	STD	N/A	N/A	N/A
4-speed manual floor shift	(2)	OPT	OPT	N/A	N/A	N/A
3-speed automatic column shift		OPT	OPT	N/A	N/A	N/A
3-speed T-bar automatic	(2)	OPT	OPT	N/A	N/A	N/A
4.1 litre crossflow 6-cylinder with: 3-speed manual column shift	(1)	OPT	OPT	N/A	N/A	N/A
4-speed manual floor shift	(2)	OPT	OPT	N/A	N/A	N/A
3-speed automatic column shift		OPT	OPT	OPT	OPT	N/A
3-speed T-bar	(2)	OPT	OPT	STD	STD	STD
4.9 litre 4-barrel V8 with: 4-speed manual floor shift	(3)	OPT	OPT	OPT	OPT	N/A
3-speed automatic column shift	(2)(4)	OPT	OPT	OPT	OPT	N/A
3-speed T-bar automatic	(2)	OPT	OPT	OPT	OPT	OPT
5.8 litre 4-barrel V8 with: 4-speed manual floor shift	(3)(5)	OPT	N/A	N/A	N/A	OPT
3-speed automatic column shift	(2)	OPT	N/A	N/A	N/A	N/A
3-speed T-bar automatic	(2)	OPT	OPT	OPT	OPT	OPT

TYRE AVAILABILITY	FALCON GL		FAIRMONT		FAIRMONT GHIA
	SEDAN	WAGON	SEDAN	WAGON	
CR78S14 steel belt radial ply tyres - 4 ply	STD	N/A	N/A	N/A	N/A
ER78S14 steel belt radial ply tyres - 4 ply	OPT	STD	STD	STD	N/A
ER70H14 steel belt radial ply tyres - 6 ply (6) (7)	OPT	OPT	OPT	OPT	STD

DIMENSIONS	SEDANS		WAGONS	
	Overall Length	4737 mm (186.5")		4982 mm (196.1")
Overall Width	1860 mm (73.2")		1859 (73.2")	
Overall Height	1374 mm (54.0")		1397 mm (55.0")	
Wheelbase	2818 mm (110.9")		2946 mm (116.0")	
Track - Front	1559 mm (61.4")		1559 mm (61.4")	
- Rear	1527 mm (60.1")		1527 mm (60.1")	
Usable fuel tank capacity	76.0 litres (16.7 gal.)		72.0 litres (15.9 gal.)	
Boot/load compartment capacity	0.42m ³ (15.1 ft. ³)		2.44m ³ (86.4 ft. ³)	
Turning Circle	11.5 m (37.8 ft.)		12.0 m (39.3 ft.)	

ENGINE SPECIFICATIONS	3.3 litre	4.1 litre	4.9 litre	5.8 litre
	6-cylinder	6-cylinder	8-cylinder	8-cylinder
Engine displacement (cc)	3280	4100	4900	5800
Bore (mm)	93.5	93.5	101.6	101.6
Stroke (mm)	79.5	99.3	76.2	88.9
Compression ratio (to 1)	8.8	9.0	9.2	8.9

FOOTNOTES TO ABOVE CHARTS:

Please read these notes in conjunction with the notes on option availability.

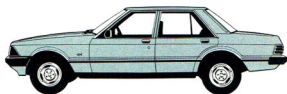
- Power steering is not available with 3-speed manual column shift transmission.
- All vehicles with floor-mounted transmissions are fitted with a centre console.
- Power steering is mandatory at extra cost when integrated air conditioning is fitted with V8 engines.
- Limited slip differential is mandatory at extra cost with 4.9 litre V8 engine and manual transmission.
- Mandatory equipment, at extra cost, with the 5.8 litre engine: 4-wheel power disc brakes, limited slip differential, ER70H14 steel belt radial ply tyres.
- ER70H14 steel belt radial ply tyres (6 ply) are standard on Falcon GL and Fairmont sedans and wagons when V8 engine is specified.
- ER70H14 steel belt radial ply tyres (6 ply) are standard when 'S Pack' is specified.



FORD FALCON GL SEDAN



FORD FALCON GL WAGON



FORD FAIRMONT SEDAN



FORD FAIRMONT WAGON



FORD FAIRMONT GHIA

CODES TO ABOVE CHARTS:

STD means standard equipment
OPT means optional at extra cost
N/A means not available on that model

PLEASE NOTE:

Ford Motor Company of Australia Limited and/or Ford Sales Company of Australia Limited reserve(s) the right, subject to the laws of Australia and/or any applicable State or Territory thereof and/or the regulations of any competent authority which may apply from time to time, at their or its discretion, and without notice, to discontinue or change the specifications, design and prices of the products referred to in this catalogue or to either permanently or temporarily withdraw any such items from the market at any time without incurring any liability whatsoever to any prospective purchaser or purchaser thereof. The availability of some of the products referred to in this catalogue may from time to time be affected by overseas or local supply conditions, then prevailing.

Due to variations which can occur in manufactured products, all measurements, dimensions, capacities and weights referred to above are approximate only.

Always consult your authorized Ford Dealer for the latest information on models, specifications, features, prices, options and availability before placing an order.

FORD MOTOR COMPANY OF AUSTRALIA LTD.
FORD SALES COMPANY OF AUSTRALIA LTD.
1735 Sydney Road, Campbellfield, Victoria.

