

FORD FAIRLANE GHIA.



HAVE YOU DRIVEN A FORD...LATELY?

FORD FAIRLANE GHIA.



HAVE YOU DRIVEN A FORD...LATELY?

A MOST SUITABLE REWARD.

Success in any field provides the opportunity to choose a reward that suitably reflects your achievement.

At the end of the day, a Ford Fairlane Ghia has always stood as the epitome of rewarding motoring. It is a status derived from the feeling of substance the vehicle engenders. It is a position that acknowledges Fairlane Ghia's innate sense of style. And it is a recognition of its ability to meet and answer the unique demands and challenges of Australian driving conditions.

Because Fairlane Ghia is first and foremost an Australian prestige car, a proud heritage that is reflected in the vehicle's luxurious appointments and outstanding mechanical specifications.

For unlike some prestige and luxury cars that are sold in Australia, this one has been designed for Australia.

And the 1994 model, with its very latest refinements and enhancements, is the most rewarding and exciting Fairlane Ghia we've ever offered.



A MOST SUITABLE REWARD.

Success in any field provides the opportunity to choose a reward that suitably reflects your achievement.

At the end of the day, a Ford Fairlane Ghia has always stood as the epitome of rewarding motoring. It is a status derived from the feeling of substance the vehicle engenders. It is a position that acknowledges Fairlane Ghia's innate sense of style. And it is a recognition of its ability to meet and answer the unique demands and challenges of Australian driving conditions.



Because Fairlane Ghia is first and foremost an Australian prestige car, a proud heritage that is reflected in the vehicle's luxurious appointments and outstanding mechanical specifications.

For unlike some prestige and luxury cars that are sold in Australia, this one has been designed for Australia.

And the 1994 model, with its very latest refinements and enhancements, is the most rewarding and exciting Fairlane Ghia we've ever offered.



COUNTRY COMFORT.

STREET SMART.

Fairlane Ghia provides luxurious and spacious accommodation for the driver and up to four passengers.

Fabric colours are carefully co-ordinated, both with each other and with the vehicle's exterior. Door trims, featuring the timeless quality of real wood inserts, indicate that no detail has been overlooked.

Seats are covered in a sumptuous 'Shadow' velour. The driver's seat features five-way adjustment, while the rear seat has increased back support for greater comfort.

It also incorporates a centre armrest and a 60/40 split to make carrying awkward boot loads easier.



60/40 split fold rear seats helps to accommodate awkward boot loads.

The steering wheel is leather-wrapped for enhanced comfort and control. There are padded armrests in the doors. The boot has an electric remote release.

Other convenience features



include electric windows, power door locks and central locking, remote fuel filler release, rear seat reading lamps and electric remote exterior mirrors. To cool you down or warm you up, Fairlane Ghia has

an automatic climate control system.

Simply select a temperature and its computer control system, with assistance from the standard air conditioning, will maintain it whilst digitally displaying the

selected temperature. As you know, Chloro Fluoro Carbons (CFCs) have been identified as a risk to upper atmospheric ozone.

The air conditioning system in today's Fairlane Ghia uses CFC-free

refrigerant. This Ford initiative has resulted not only in a more environmentally friendly system but also a more effective one.

Doors, ignition and boot are fitted with high security 'Tibbe'

locks and the ignition lock barrel has extra reinforcing. Door lock buttons are recessed.

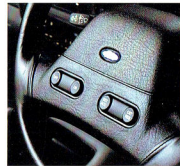
Major vehicle components are permanently marked with a unique Vehicle Identification Number.



Four speed electronically controlled automatic transmission with 'power' and 'economy' modes.



Multi-function digital trip computer and clock.



Cruise control buttons conveniently located on steering wheel boss.



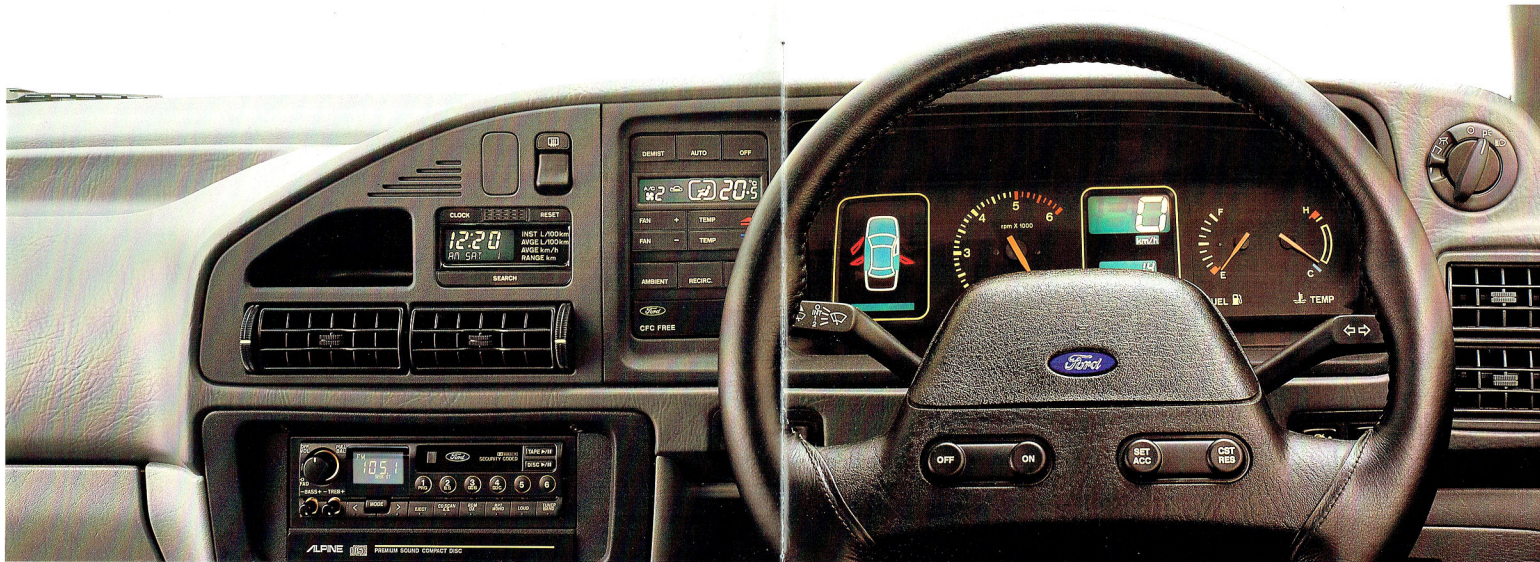
The radio/cassette player is protected by a programmed security code rendering the unit useless to thieves.



Steering column adjusts in rake and reach for comfort and control.



Computer monitored, automatic climate control.



RIGHT BEFORE YOUR EYES.

Instruments are laid out to provide information at a single glance. Built into the soft-touch steering wheel are switches for the cruise control. The steering column adjusts for both rake and reach, and the wheel is trimmed in genuine

leather for comfort and feel.

Instruments include an LCD digital speedo, tripmeter, odometer and analogue tachometer plus a display indicating open doors, fuel filler or boot.

There are analogue fuel and temperature gauges, warning lamps

for twelve separate functions and a digital clock/trip computer display.

For entertainment, a sophisticated Premium Sound System is included. The heart of the system is an Alpine AM/FM stereo radio/cassette player featuring Dolby™ music search, auto-scan memory

storage and dynamic speakers for surround sound.

The unit is protected by security coding that renders it useless to thieves. It offers studio quality sound with a 260 Watt output through nine individual speaker elements, including satellite

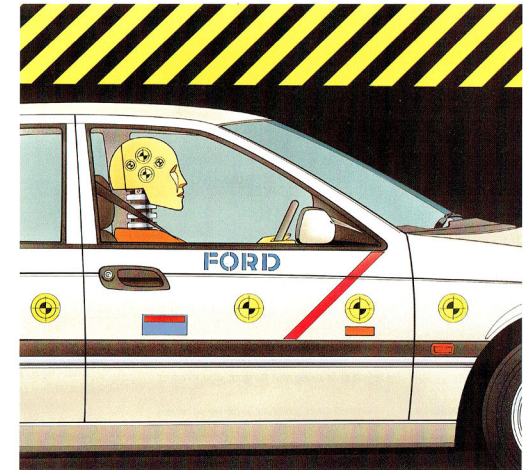
tweeters and sub-woofer. The speakers and amplifier have been specially developed to suit the vehicle's acoustic profile for optimal sound performance.

Finally, the power antenna is automatically operated when the radio is in use.

True music lovers though will add the optional state-of-the-art CD player with boot-mounted remote changer.

The Premium Sound System has control switches and circuitry included to enable the CD player to be fitted later if desired.

THE FORD SAFETY EVOLUTION.



Ford has always had an ongoing commitment to continuously improving vehicle safety.

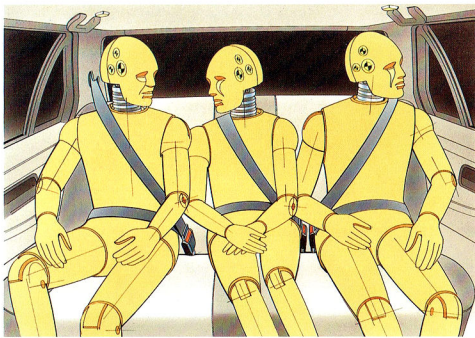
Over successive generations of vehicles, Ford has incorporated an increasing number of safety features into Fairlane Ghia.

Primary safety features include engines with sufficient power not to be found wanting when extra response is called for.

Steering and suspension systems that are precise and predictable. Powerful braking, including four

wheel discs and standard Anti-lock Braking System (ABS).

But because, even though it may not be you or your car's fault, collisions do occur, Fairlane Ghia's secondary safety features are so important.



Fairlane Ghia provides the security of inertia reel lap/sash seat belts for all occupants, including the rear centre passenger.

The list includes integral vehicle crumple zones and strengthened passenger compartments, inertia reel seat belts with reinforced mountings for all occupants, including the centre rear passenger, and special seat belt lockers in the front.

In fact, Ford takes safety so seriously that Fairlane Ghia not only meets but significantly exceeds many of the safety standards laid down.

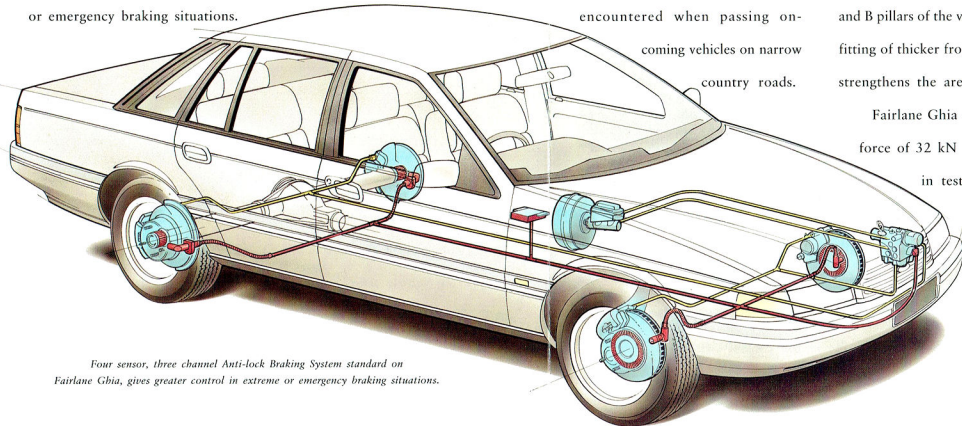
Of all the features to be found on your new Ford, the ones concerning safety are the ones we hope you never have to think about.

But if you do, it's good to know that the engineers at Ford have done a lot of thinking for you.

And here are some of their latest thoughts.

ANTI-LOCK BRAKING SYSTEM.
IMPROVED CONTROL FOR GREATER SAFETY.

Fairlane Ghia's standard four sensor, three channel ABS braking system is designed to give you greater control over your vehicle in extreme or emergency braking situations.

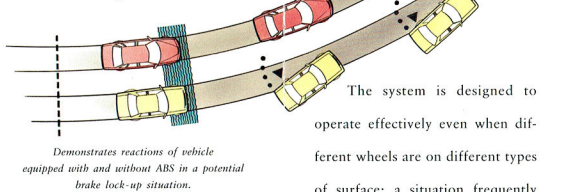


Four sensor, three channel Anti-lock Braking System standard on Fairlane Ghia, gives greater control in extreme or emergency braking situations.

To prevent your brakes from locking, sensors at each wheel are connected to a microprocessor which detects when a wheel is about to lock.

When triggered, a system of electronically-controlled valves between the brake booster and the wheel open and close several times per second to enable maximum braking power just short of the point at which lock-up will occur, to be applied to each wheel.

Not only does ABS mean shorter braking distances in most

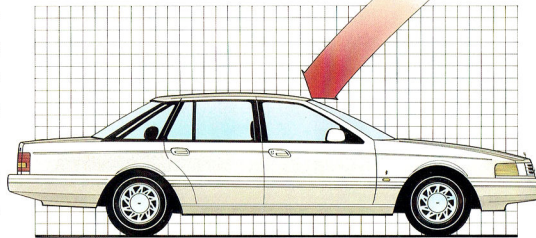


Demonstrates reactions of vehicle equipped with and without ABS in a potential brake lock-up situation.

circumstances, more importantly it means you still have full steering control so hazards can be more easily avoided by a combination of braking and steering.

The sophisticated ABS fitted as standard to Fairlane Ghia has software specially programmed for Australian road conditions, including a special 'deep pulse' program designed for gravel roads.

The system is designed to operate effectively even when different wheels are on different types of surface; a situation frequently encountered when passing on-coming vehicles on narrow country roads.



Epoxy resin reinforcement of A and B pillars plus thicker front and side glass has strengthened the passenger compartment.

IT'S TOUGH AT THE TOP.

The passenger safety cage in Fairlane Ghia has been significantly strengthened by improving its roof crush strength, making the intrusion beams in the doors stronger and by making the roof a structural member of the passenger compartment.

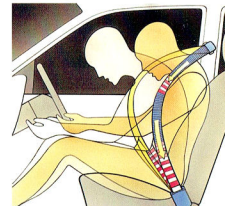
An epoxy resin composite has been used to reinforce both the A and B pillars of the vehicle, while the fitting of thicker front and side glass strengthens the area still further.

Fairlane Ghia can withstand a force of 32 kN (over 3 tonnes) in testing for the US roof crush resistance standard FMVSS 216.

BELT UP FOR SAFETY

Seat belts usually don't rate much attention - until you need them in an emergency.

Fairlane Ghia helps to protect all occupants, including the centre rear passenger, with lap/sash inertia reel seat belts.



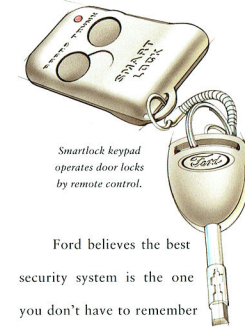
Belt-locker device instantly minimises payout of seat belt webbing.

The front seat belts have a special locking device that instantly minimises any seat belt webbing payout in extreme circumstances.

Also, sections of the front seat belts have 'popable' stitches to control precisely the movement of the wearer in a collision.

MAJOR ADVANCES IN VEHICLE SECURITY.

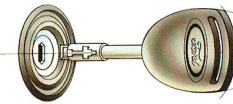
So that Fairlane Ghia attracts no more than admiring looks from persons other than the owner, the latest technology has been applied in the area of vehicle security.



Smartlock keypad operates door locks by remote control.

Ford believes the best security system is the one you don't have to remember to switch on. So Ford developed Smartlock, a security system that's an integral part of your Fairlane Ghia's operating systems. It works by automatically immobilising the vehicle when the ignition key is removed.

Before it will enable the engine to start, the Smartlock computer module demands a set of precise codes that are only released by the high security 'Tibbe' ignition key. So even the most determined thief would find it virtually impossible to start the car. Also, the profile and barrel of the ignition lock have been specifically



Doors, ignition and boot are all protected by high security 'Tibbe' locks.

designed to frustrate even the most sophisticated attempts at theft.

Recessed door lock buttons help to guard against unauthorised entry. For your convenience, Smartlock also provides keyless access to the vehicle via a remote control keypad which operates the standard power door locks and boot lock.



SAFER FOR THE ENVIRONMENT TOO.

As you know, Chloro Fluoro Carbons (CFCs) have been identified as a risk to upper atmospheric ozone. The factory-fitted air conditioning system in Fairlane Ghia uses CFC-free refrigerant. This Ford initiative has resulted not only in a more environmentally friendly system but also a more effective one.

The CFC-free air conditioning system includes outlets at the back

of the centre console for the comfort of rear seat passengers.

SECURITY CODED RADIO.

Fairlane Ghia's radio and cassette player is protected by another Ford anti-theft measure. A special security code renders the unit useless to thieves.



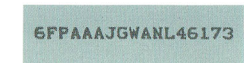
The radio and cassette player is protected by a programmed security code rendering the unit useless to thieves.

You'll discover that the security systems in Fairlane Ghia represent more than the latest technology.

It's technology applied in a most intelligent way. See your Ford Dealer soon for a detailed presentation and demonstration.

IDENTIFICATION CODING OF VEHICLE COMPONENTS.

Every Ford is allocated a unique Vehicle Identification Number (VIN) which distinguishes the vehicle from all others on the road.



VIN markings on major components help to deter theft.

Major vehicle components are permanently marked with the VIN as another way to help deter theft.

6FPAAAJGWA146173



APPEARANCES
AREN'T DECEPTIVE.

The long distance capabilities of Fairlane Ghia show through in its styling. The untroubled way it will undertake a journey is reflected in the clean, uncluttered lines that

also produce a smooth aerodynamic profile. That in turn assists handling and reduces interior noise.

While function is frequently more important than form, when

the two are as perfectly combined as they are in Fairlane Ghia you derive considerable aesthetic pleasure.

Fairlane Ghia's impressive styling includes colour-coded body-

side mouldings, exterior mirrors, door handles and wrap-around bumpers. Impressively styled alloy wheels. Slim-line headlamps, clear front turn signal lamps, bright

grille, alloy wheels, concealed rain gutters and the subtle but distinctive Ghia badges and hood ornament. All contribute to Fairlane Ghia's classic exterior appeal.

MORE POWER

IN THE LONG RUN.

The distances we have to travel in this country demand power to get us where we're going but without sacrificing economy.

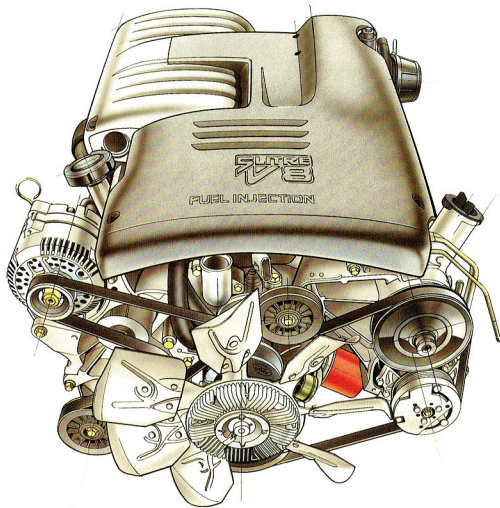
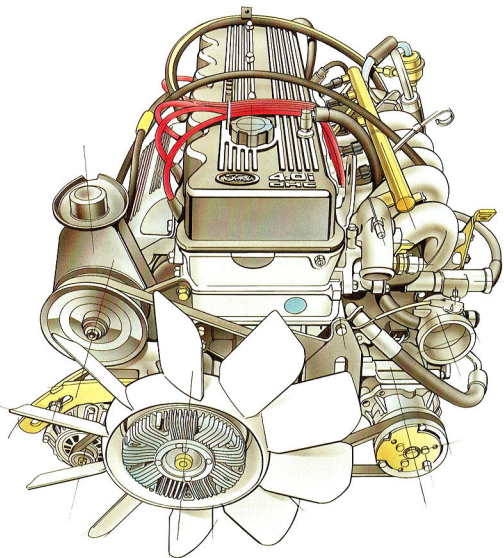
And Fairlane Ghia is equipped with your choice of engines, both of which deliver just the kind of performance that's needed.

The powerful 4 litre six cylinder engine is equipped with an alloy head, overhead camshaft and multipoint electronic fuel injection.

It's designed to produce 148kW of power at 4500rpm and 348 Nm of torque at 3750 rpm. While this may be the most powerful six cylinder engine ever fitted to a Fairlane, it's the smooth and quiet way in which the power is produced that's so impressive.

That smoothness is the result of a revised combustion chamber plus significant advances in piston and valve technology.

These developments help the engine breathe better, resulting in faster, more effective gas flow. To help keep the engine operating at peak efficiency, and with optimum fuel efficiency, Ford's EEC4 Engine Management System incorporates a



single highly advanced micro-processor that controls both engine and automatic transmission. This system, known as Integrated Powertrain Control, uses a single chip to reduce electronic complexity and increase reliability. The end result is the co-ordinated monitoring and control of sixteen important engine functions, including fuel/air mixture, air intake and coolant temperature, fuel flow and ignition timing.

V8. THE LAST WORD

IN POWER.

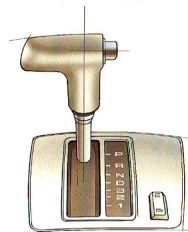
No other engine has the ability to seemingly shorten distances, flatten hills or make light work of a load like a V8. And for the driver who wants optimum power, V8 performance is available as an option on Fairlane Ghia.

The 5 litre V8 engine is equipped with Sequential Multipoint Electronic Fuel Injection which is sequenced with engine valves to inject fuel at precisely the right moment. It makes it possible for this remarkable engine to generate a stirring and substantial 165 kW at 4500 rpm. With tremendous torque of 388 Nm at 3000 rpm.

This engine, a product of engineering excellence, delivers

these copious quantities of energy smoothly and effectively.

Those concerned with fuel efficiency will be suitably impressed with this engine's returns. Enormous efforts have been made to ensure it is one of the most fuel-efficient V8s ever built. The semi-dual exhaust system has 63 mm stainless steel pipes to reduce restriction and internal corrosion. As a finishing touch a chrome-plated tailpipe is fitted.



WHAT A SMOOTHIE.

Fairlane Ghia has a four speed electronically controlled automatic transmission with lock-up torque converter. Noted for the smoothness of its gear changes, this Australian-made electronic transmission features power and economy modes which the driver can select to suit prevailing conditions.

A single microprocessor provides integrated electronic control of both the engine and the automatic

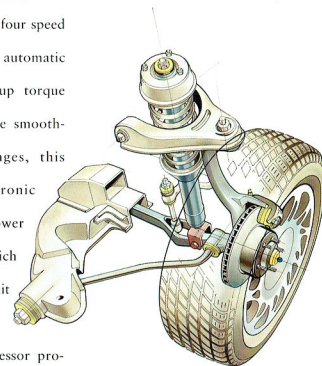
transmission. This advanced system maximises efficiency whilst, by using just one electronic chip, reducing complexity and increasing reliability.

ENJOY THE RIDE.

Fairlane Ghia features an advanced suspension with refined spring rates, nitrogen-charged gas front shock absorbers, durable upper and lower rear suspension bushes and mountings.

All of which are designed to produce an impressive quality of ride whilst retaining precise and predictable handling characteristics.

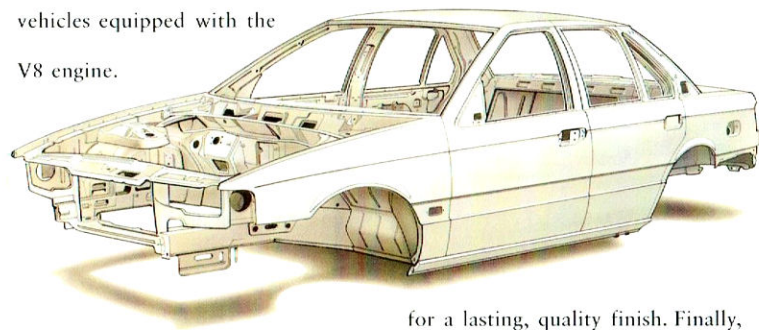
The front suspension features the sophisticated short and long arm, long spindle (SLALS) system. Strong and durable, it provides smooth and confident road holding.



The rear end is fitted with a proven and reliable self-levelling

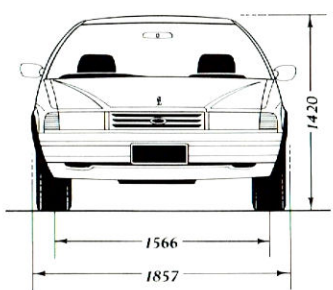
Watts Link rear suspension that produces impeccable road manners and outstanding stability whilst towing. The power-assisted rack and pinion steering offers excellent 'feel' and fast responses thanks to rigid steering rack mountings, precisely balanced camber and castor settings and a quick variable steering ratio.

Stopping power, with the control and security of the standard Anti-lock Brake System, is supplied by power-assisted four-wheel disc brakes, with double-acting booster and semi-metallic disc pads fitted on vehicles equipped with the



WHEN YOU'VE GOT TO TOW.

Fairlane Ghia is an ideal vehicle for towing. Whilst you enjoy the comfortable interior, you can pull



up to 2300 kg of boat, caravan, horse float or trailer, when equipped with the Ford approved tow pack, and subject to State and Territory regulations.

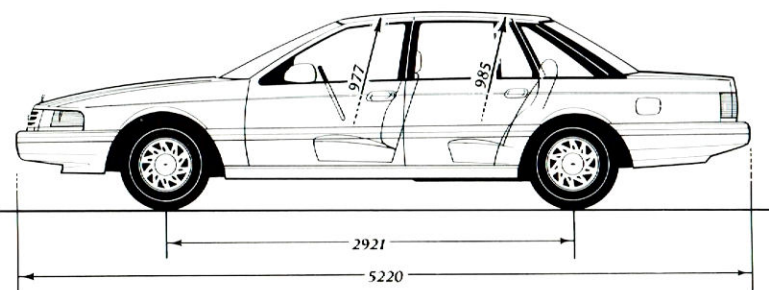
A BIG FINISH.

Fairlane Ghia looks as good on the outside as it feels on the inside. To top it all off, Ford prepares the entire body for painting by phosphate electrocoating.

It's dipped in primer, then for total coverage robotically sprayed with primer again.

Then robots spray on a top coat for a lasting, quality finish. Finally, a rust-proofing wax is applied.

The end result is made to last, a claim that Ford backs with a five year warranty against perforation corrosion.



STYLING AND SUSPENSION OPTIONS.

Your new Fairlane Ghia is engineered to perform to exacting standards of ride and road holding. But for the driver who wants to equip his new Ford to perform with even sharper handling and quicker responses, a specialised suspension option is available to enhance your new car's touring capabilities.

Tow packs and an electric sunroof kit are also available.

These options are specifically made for Fairlane Ghia from high quality materials, and because they are installed before delivery you are assured of proper fit and compatibility.

And all Ford options are fully covered by the Ford Express New Vehicle Warranty.

TOURING SUSPENSION.

Luxurious comfort and responsive handling are combined in the Fairlane Ghia. The Touring Suspension, with special springs,

FORD PRESTIGE SERVICE PLAN. EXCLUSIVELY YOURS.

One of the many rewards of owning a prestige vehicle like Fairlane Ghia is entitlement to the Ford Prestige Service Plan, which takes effect from the date you purchase your new car and provides assistance and peace of mind for 3 years. The Ford Prestige Service Plan is part of Fordcare and is exclusive to owners of Ford prestige vehicles. Among the many benefits offered are:

- 24 hr Emergency Roadside Assistance in the event of mechanical breakdown.
- Emergency Towing and vehicle recovery service.
- One night's free emergency accommodation for up to 5 people.
- Free emergency rental car assistance in certain circumstances.

- General assistance with medical matters.
- Assistance with cancellation or re-booking of any pre-arranged travel and accommodation.
- Urgent message relay anywhere in Australia.

In the event of a mechanical breakdown, these special services can be accessed from anywhere in the country, 24 hours a day, 365 days a year via a toll-free hotline. The number is clearly shown on your personal owner identification card.

You will receive your card with your Ford Prestige Service Plan introduction pack. Keep it safe and always take it with you when you drive.

The card carries individual details about your vehicle and gives you access to all the services provided by the Ford Prestige Service Plan.



AN EXTRA SPECIAL SERVICE.

All Ford owners are special to us. But as the owner of a new prestige vehicle like a Fairlane Ghia you're entitled to expect considerations that reflect your valued status.

So to assist you in arranging routine servicing of your vehicle, the Ford Prestige Service Plan provides a central booking facility for any Ford dealership you choose.

And to make sure we're doing our job properly, you will receive a follow-up call after your service has been carried out to make certain you are fully satisfied with the work.

SERVICE LOAN VEHICLE.

If your Fairlane Ghia has to spend more than 24 hours at the servicing dealership in order for any warranty repairs to be carried out, a free loan vehicle will be available for you to use until your car is ready.

FORDCARE. OUR COMMITMENT TO CUSTOMER SATISFACTION.



Fordcare is a whole range of programs, products and services designed to make Ford owners the most satisfied motor vehicle owners in Australia.

Fordcare starts when you enter a Ford Dealer's showroom, it's there when you take delivery of your new Ford and it continues for the life of the vehicle.

That means first class service for you at all times, and nothing less than the best for your Ford from our extensive network of Authorised Ford Dealers.

As motor vehicles become more sophisticated and technically advanced, specialised care and maintenance becomes more vital.

Fordcare provides the technical equipment and expertise to keep your Ford operating in peak condition.

The well-being of your Ford is supported by these additional warranties:

THE FORD 24 MONTH/50,000 KM EXPRESS NEW VEHICLE WARRANTY.



Covers your Ford against defects in materials or workmanship for the first 24 months or 50,000 km whichever occurs first.

When fitted at time of vehicle purchase, Ford Approved Accessories are also covered by the Ford 24 month/50,000 km Express New Vehicle Warranty.

FIVE YEAR PERFORATION CORROSION WARRANTY.

Covers the original vehicle's body against perforation corrosion for the first five years of its life.

LIFETIME SERVICE WARRANTY.



Covers the majority of part replacements, including labour, carried out by your Ford Dealer after the expiration of the initial Ford 24 month/50,000 km Express New Vehicle Warranty.

It means you will only ever pay once for such repairs under normal driving conditions.

LIFELONG PANEL WARRANTY.



Covers replacement of outer body panels against perforation corrosion for the life of the vehicle.

Further information on these warranties may be obtained from your Authorised Ford Dealer.

FORD CUSTOMER ASSISTANCE CENTRE.



You will find our Customer Assistance Representatives responsive to your needs. They can assist with any general enquiry about your vehicle that calls for special information beyond the scope of your Authorised Ford Dealer.

Customer Assistance Centre Phone 008 333 306 (TOLL FREE), in Melbourne phone 359 7023.

FORD LEASING.



Fully maintained operating leases are available to approved applicants through Ford Credit Australia Limited. Enquire at your participating Authorised Ford Dealer.



Fairlane Ghia fitted with sunroof, touring pack and 16" wheels and tyres.

shock absorbers, stabiliser bars and linkages, offers a similar combination but with more emphasis on responsive handling. It also provides a lower ride height.

16" WHEELS AND TYRES.

Aggressive 16"x7" five-spoke alloy wheels fitted with high performance Michelin 225/50 ZR 16 tyres. Designed to fully exploit the handling capabilities of the touring suspension, while adding a bold new style to your vehicle.

1200 KG

RATED TOW PACK.

Specifically designed for Fairlane Ghia. 1200 kg capacity. Includes the towbar with painted tongue, wiring harness, 7-pin connector, reinforcement brackets, and transmission oil cooler for automatic transmissions.

HEAVY DUTY TOW PACK.

For those who already have a 2100kg or 2300kg Load Distributing

Hitch and who want a compatible towbar on their new Ford.

Features Hayman Reese Heavy Duty Towbar (2300 kg rated capacity), trailer wiring kit, revised turn signal flasher, heavy duty brake pads (where not fitted as standard), transmission oil cooler for automatic transmissions, and a 1200 kg rated capacity plug-in tow ball mount.

2300 KG

RATED TOW PACK.

2300 kg rated capacity.* Features renowned Hayman Reese Heavy Duty Tow Bar and Load Distributing Hitch, trailer wiring kit, revised turn signal flasher, heavy duty brake pads (where not fitted as standard), and transmission oil cooler for automatic transmissions.

MOMO

STEERING WHEEL.

Leather covered sports steering wheel designed for enhanced comfort, control and vehicle 'feel'.

SUNROOF.

Precision crafted electric glass sunroof fully imported from Germany.

Operates as a tilted vent to assist ventilation or partially or fully open to increase your enjoyment of the great outdoors.

Automatic pop-up wind deflector minimises wind noise and buffeting.

CAR ALARM.

Available as a dealer fitted Ford Accessory. Sophisticated and highly sensitive alarm system designed to help protect your new Ford.

It is fully integrated with the vehicle's *Smartlock* electronic immobilisation and keyless entry system.

Features include remote active arming, auto arming selectable, auto disarming, re-arming if no entry after 60 seconds, starter cut-out, shock detector.

**Subject to State and Territory regulations.*



Fairlane Ghia fitted with sunroof, touring pack and 16" wheels and tyres.

shock absorbers, stabiliser bars and linkages, offers a similar combination but with more emphasis on responsive handling. It also provides a lower ride height.

16" WHEELS AND TYRES.

Aggressive 16"x7" five-spoke alloy wheels fitted with high performance Michelin 225/50 ZR 16 tyres. Designed to fully exploit the handling capabilities of the touring suspension, while adding a bold new style to your vehicle.

1200 KG

RATED TOW PACK.

Specifically designed for Fairlane Ghia. 1200 kg capacity. Includes the towbar with painted tongue, wiring harness, 7-pin connector, reinforcement brackets, and transmission oil cooler for automatic transmissions.

HEAVY DUTY TOW PACK.

For those who already have a 2100 kg or 2300 kg Load Distributing

Hitch and who want a compatible towbar on their new Ford.

Features Hayman Reese Heavy Duty Towbar (2300 kg rated capacity), trailer wiring kit, revised turn signal flasher, heavy duty brake pads (where not fitted as standard), transmission oil cooler for automatic transmissions, and a 1200 kg rated capacity plug-in tow ball mount.

2300 KG

RATED TOW PACK.

2300 kg rated capacity.* Features renowned Hayman Reese Heavy Duty Tow Bar and Load Distributing Hitch, trailer wiring kit, revised turn signal flasher, heavy duty brake pads (where not fitted as standard), and transmission oil cooler for automatic transmissions.

MOMO

STEERING WHEEL.

Leather covered sports steering wheel designed for enhanced comfort, control and vehicle 'feel'.

SUNROOF.

Precision crafted electric glass sunroof fully imported from Germany.

Operates as a tilted vent to assist ventilation or partially or fully open to increase your enjoyment of the great outdoors.

Automatic pop-up wind deflector minimises wind noise and buffeting.

CAR ALARM.

Available as a dealer fitted Ford Accessory. Sophisticated and highly sensitive alarm system designed to help protect your new Ford.

It is fully integrated with the vehicle's *Smartlock* electronic immobilisation and keyless entry system.

Features include remote active arming, auto arming selectable, auto disarming, re-arming if no entry after 60 seconds, starter cut-out, shock detector.

**Subject to State and Territory regulations.*



This brochure is designed to provide you with a general introduction to the Ford Products (including available optional equipment) referred to, and should be read in conjunction with the latest specification sheet. Because of changes in conditions and circumstances Ford reserves the right, subject to all applicable laws, at any time, at its discretion, and without notice, to discontinue or change the features, designs, materials, colours and other specifications and the prices of their products, and to either permanently or temporarily withdraw any such products from the market without incurring any liability to any prospective purchaser or purchaser. The latest specification sheet should be referred to for information on the availability, ordering and use of optional equipment. Always consult an Authorised Ford Dealer for the latest information with respect to features, specifications, prices, optional equipment and availability before deciding to place an order. *FORD MOTOR COMPANY OF AUSTRALIA LIMITED. (A.C.N. 004 116 223) Registered Office: 1735 Sydney Road, Campbellfield, Victoria 3061, Australia. Printed in February 1994.



This brochure is designed to provide you with a general introduction to the Ford Products (including available optional equipment) referred to, and should be read in conjunction with the latest specification sheet. Because of changes in conditions and circumstances Ford* reserves the right, subject to all applicable laws, at any time, at its discretion, and without notice, to discontinue or change the features, designs, materials, colours and other specifications and the prices of their products, and to either permanently or temporarily withdraw any such products from the market without incurring any liability to any prospective purchaser or purchaser. The latest specification sheet should be referred to for information on the availability, ordering and use of optional equipment. Always consult an Authorised Ford Dealer for the latest information with respect to features, specifications, prices, optional equipment and availability before deciding to place an order. *FORD MOTOR COMPANY OF AUSTRALIA LIMITED. (A.C.N. 004 116 223) Registered Office: 1735 Sydney Road, Campbellfield, Victoria 3061, Australia. Printed in February 1994.

FORD FAIRLANE GHIA.



This brochure is designed to provide you with a general introduction to the Ford Products (including available optional equipment) referred to, and should be read in conjunction with the latest specification sheet. Because of changes in conditions and circumstances Ford[®] reserves the right, subject to all applicable laws, at any time, at its discretion, and without notice, to discontinue or change the features, designs, materials, colours and other specifications and the prices of their products, and to either permanently or temporarily withdraw any such products from the market without incurring any liability to any prospective purchaser or purchaser. The latest specification sheet should be referred to for information on the availability, ordering and use of optional equipment. Always consult an Authorised Ford Dealer for the latest information with respect to features, specifications, prices, optional equipment and availability before deciding to place an order. *FORD MOTOR COMPANY OF AUSTRALIA LIMITED. (A.C.N. 004 116 223) Registered Office: 1735 Sydney Road, Campbellfield, Victoria 3061, Australia. Printed in February 1994.



HAVE YOU DRIVEN A FORD...LATELY?

Standard Equipment: Ford Fairlane Ghia

FEATURES

MECHANICAL

- 4.0 litre OHC engine with multipoint electronic fuel injection
- Electronic engine control (EEC 4) system
- 4 speed electronically controlled floor automatic transmission with lock-up torque converter, power and economy modes and overdrive
- Short and long arm, long spindle front suspension
- Auto self levelling Watts Link rear suspension
- Front and rear stabiliser bars
- Four wheel disc brakes
- Anti-lock braking system (ABS)
- Power assisted rack and pinion steering
- Limited slip differential

EXTERIOR

- Body coloured exterior door handles
- Body coloured front and rear bumpers with bright insert
- Body coloured valance
- Bright chrome hood grille
- Wide section colour keyed bodyside protection mouldings with bright inserts
- P205/65 HR15 steel belt radial ply tyres
- 15" x 6.5"J alloy wheels with centre cap
- Rectangular ellipsoid projector headlamps with integrated indicators and park lamps
- Clear front turn signal lamps
- Colour keyed foldaway exterior rear view mirrors with electric remote control
- Two speed front windscreen wipers with intermittent setting, demand wash/wipe and demand wipe feature
- Dual jet windscreen washers
- Rear window demister with timed automatic switch off feature
- Full tinted laminated windscreen with tinted band
- Tinted side and rear glass

FEATURES

EXTERIOR (continued)

- Rear glass ceramic sunshade
- High mounted stop lamp
- Chrome exhaust tip
- Hood ornament

INTERIOR

- "Smart Lock" electronic immobilisation and keyless entry system
- High security locking system featuring "Tibbe" locks on doors, ignition and boot, recessed door lock buttons and strengthened steering column lock housing
- Deluxe leather wrapped steering wheel incorporating cruise control switches
- Adjustable rake and reach steering column
- Prismatic day/night interior rear view mirror
- Cloth covered sunvisors with passenger vanity mirror
- Large centre console with power window controls and centre armrest
- Digital clock with trip computer display
- Seats and doors trimmed in velour with Shadow velour insert
- Blackbean woodgrain door trim inserts
- Driver and passenger seat fore and aft adjustment
- Driver and passenger seat infinite adjustable recline
- Driver's seat lumbar and height adjustment
- Front and rear adjustable headrests
- 60/40 split fold down rear seat backrest with centre armrest
- Driver and passenger seat back map pockets
- Front door map pockets/storage compartment
- Integrated grab handles and coat hooks
- Driver's left footrest
- Moulded cloth covered headlining
- Carpeted passenger and luggage compartment floor

FEATURES

INTERIOR (continued)

- Interior light with twin spot lamps
- Illuminated entry system
- Rear reading lamps
- Front footwell lamps
- Rear footwell lamps
- Luggage compartment lamp
- Ignition lock illumination
- Illuminated front and rear cigar lighters and ashtrays
- Illuminated and lockable glove box
- Warning lights: high beam, rear window demister on, turn signal/hazard, alternator, lights on, park brake on, washer fluid low, radiator fluid low, fuel low, high temperature, cruise control indicator, car outline diagram for door, boot, fuel filler door open, low oil pressure, seat belt reminder and auto rear suspension malfunction
- Audible warning chimes: low fuel, lights on, low alternator charge, low oil pressure, high coolant temperature, brake failure
- Gauges — Digital speedometer, odometer, tripmeter and analogue fuel gauge, water temperature gauge and tachometer
- Trip computer
- Cruise control
- Dual horns
- Power door locks with remote keyless entry
- Power windows
- Childproof rear door locks
- Remote fuel filler release
- Remote boot release
- Front inertia reel seat belts with "belt lockers", rear inertia reel seat belts for all passengers
- Alpine Premium Sound System with 9 individual speaker elements
- Power antenna
- Automatic climate control system with integrated CFC (chloro fluoro carbons) free air conditioning and rear seat ducts

HAVE YOU DRIVEN A FORD... LATELY?

FORD FAIRLANE GHIA



Ford Fairlane Ghia Specifications

FORD FAIRLANE GHIA

Engine	4.0 litre Multipoint EFI	5.0 litre Multipoint EFI
Bore & Stroke mm	92.26 x 99.3	101.6 x 76.2
Cylinder Head	OHC aluminium alloy	OHV cast iron
Displacement cc	3984	4942
Compression Ratio	8.8:1	9:1
Fuel System	Electronic fuel injection controlled by EEC 4 engine management system	
Fuel Required	Regular unleaded	Regular unleaded
Max Power DIN kW/rpm	148/4500	165/4500
Max Torque Nm/rpm	348/3750	388/3000

Suspension

Front	Rear
• Short and Long Arm, Long Spindle (SLALS) design	• Rigid axle
• Single rate coil springs	• 4 trailing arms with Watts Linkage
• Twin tube telescopic shock absorbers mounted co-axially within the coil spring	• Single rate coil springs
• Stabiliser bar	• Twin tube telescopic shock absorbers mounted co-axially within the coil springs
	• Stabiliser bar
	• Auto self levelling rear suspension

Brakes

FRONT: Power assisted ventilated disc : 287mm
 REAR: Power assisted disc : 287mm

Dimensions

Exterior (mm)	
Overall length	5220
Overall height	1420
Overall width	1857
Wheelbase	2921
Front track	1566
Rear track	1545
Front overhang	1041
Rear overhang	1258

Interior (mm)

Front headroom	977
Front legroom	1080
Front shoulder room	1527
Front hiproom	1475
Rear headroom	985
Rear legroom	1075
Rear shoulder room	1515
Rear hiproom	1245

General

Kerb weight (kg)	1608 (c)
Luggage capacity (litres)	481
Fuel tank capacity (litres)	68
Min turning circle (m) - diameter	11.4

Selected Fuel Consumption Data

Engine/Transmission/Bodystyle	City Cycle (l/100km)	Highway Cycle (l/100km)
4.0 L MP EFI Auto Fairlane Ghia	13.0	8.0
5.0 L MP EFI Auto Fairlane Ghia	14.5	9.0

These figures are obtained from controlled laboratory tests conducted by Ford Motor Company of Australia Limited to Australian Standard AS2877 and are provided to assist you in comparing the fuel consumption of Fairlane with other vehicles. **The actual fuel consumption you achieve will depend, however, on many factors, including your driving habits, the prevailing conditions and your vehicle's equipment, condition and use.**

Optional Equipment

Option	Fairlane Ghia
Car Alarm (f)	OPT
1200 kg Rated Tow Pack (a)	OPT
Heavy Duty Tow Pack (a)	OPT
2300 kg Tow Pack (a)	OPT
Prestige Paint (b)	NCO
Alpine Premium Sound System	STD
CD player with boot mounted 6 disc cartridge (e)	OPT
Sunroof	OPT
Touring Suspension	OPT
16" alloy wheels with P225/50 ZR16 tyres (d)	OPT

Engine/Transmission Combinations

Engine/Transmission	Fairlane Ghia
4.0 litre MP EFI 4 speed auto	STD
5.0 litre MP EFI 4 speed auto	OPT

Towing Capacity (Subject to applicable legislation and tow bar capacity)

Transmission	Ford Approved 1200 kg Rated Tow Pack	Ford Approved Heavy Duty Tow Pack (with 1200 kg Rated Ball Mount)	Ford Approved 2300 kg Tow Pack (with Load Distributing Hitch)
4 speed auto	1200 kg *	1200 kg *	2300 kg *

* Without the Ford approved Tow Pack, the towing capacity is 500 kg.

STD Standard equipment
 OPT Optional at extra cost
 NCO No cost option
 N/A Not available

Footnotes:

- (a) The Tow Packs are fitted to the vehicle by or for Ford and provide the specified towing capacities when used in accordance with the instructions in the Ford Owners Manual. Each Tow Pack consists of:
- Tow bar
 - Hitch and/or ballmount
 - Wiring harness with flat 7-pin electrical connector
 - Towing turn signal flasher
 - Supplementary transmission cooler (automatic transmissions only)
 - Heavy duty brake pads (where not fitted as standard)
- Note: Other items such as the caravan or trailer braking system, tow ball, safety chains, etc. are required for the attachment of a caravan or trailer to the towbar or hitch, are not supplied as part of the Tow Pack and must be purchased at extra cost or be supplied by the purchaser of the vehicle. An accessory towbar is also available from your Authorised Ford Dealer, fitting to be arranged by the purchaser. If the vehicle is to tow a gross weight of more than 500kg the appropriate Ford Approved Tow Pack must be fitted. Consult your Authorised Ford Dealer for the latest information with respect to the specifications and the availability of the accessory towbar.
- The actual towing capability and performance of a vehicle will depend on many factors including the suitability of the caravan, trailer, etc. the condition of the vehicle, the vehicle load, the vehicle specifications, weather conditions, road gradient, terrain and other prevailing conditions.
- (b) Consult the Ford colour selector or your Authorised Ford Dealer to determine which colours are available in the prestige paint range. Prestige paint is available at no extra cost.
- (c) Approximate kerb weight for Fairlane Ghia fitted with 4.0 litre MP EFI.
- (d) Available only in conjunction with a Touring Pack.
- (e) Available only in conjunction with Premium Sound System.
- (f) The Car Alarm is available as a dealer fitted option.

About this specification sheet. This sheet is designed to provide you with selected specification data for the Ford Products which have been described in a general way in the relevant brochure. Because of changes in conditions and circumstances Ford* reserves the right, subject to all applicable laws, at any time, at its discretion, and without notice to discontinue or change the features, designs, materials, colours and other specifications and prices of its products, and to either permanently or temporarily withdraw any such products from the market without incurring any liability to any prospective purchaser or purchaser.

Because of variations which occur in manufactured products, all capacities, measurements, dimensions and weights quoted in the relevant brochure and this specification sheet should be taken as approximate only.

Always consult an Authorised Ford Dealer for the latest information with respect to features, specifications, prices, optional equipment and availability before deciding to place an order.

*FORD MOTOR COMPANY
 OF AUSTRALIA LIMITED
 (A.C.N. 004 116 223)

Registered office:
 1735 SYDNEY ROAD,
 CAMPBELLFIELD, VICTORIA, 3061.

HAVE YOU DRIVEN A FORD... LATELY?

PRINTED MARCH 1994

