

**FORD FAIRLANE GHIA**

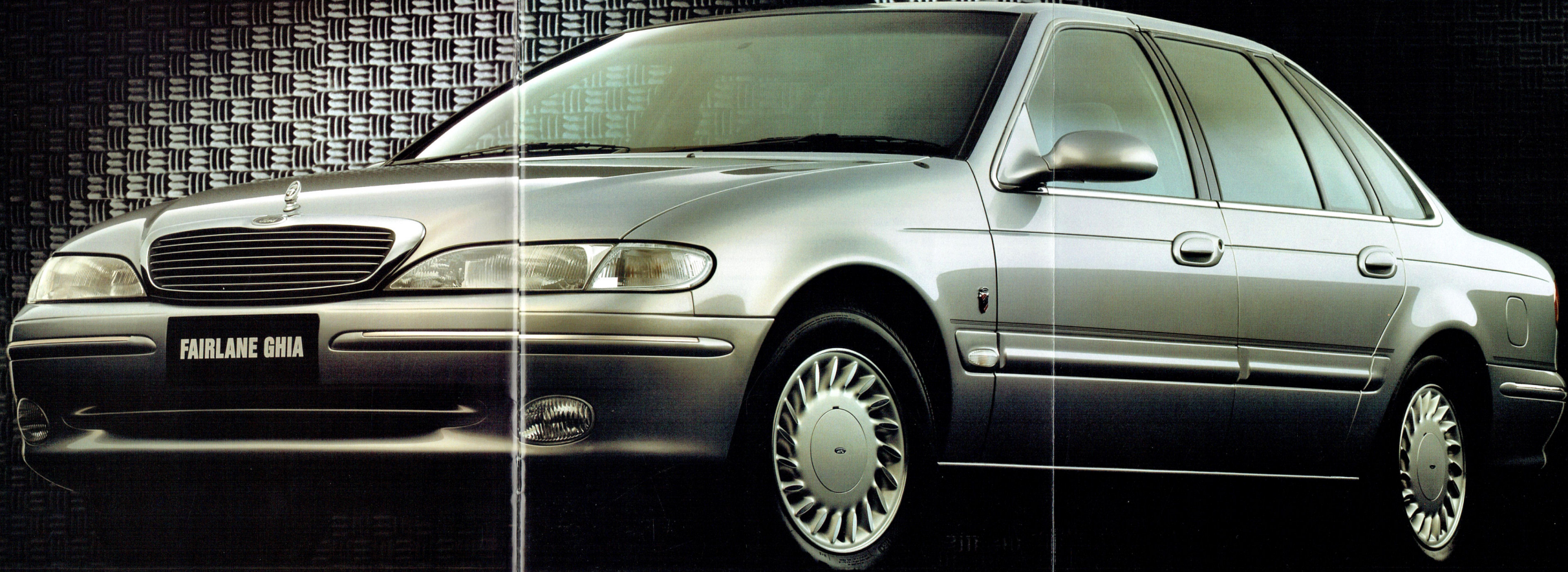


**FAIRLANE GHIA**



**HAVE YOU DRIVEN A FORD...LATELY?**





FAIRLANE GHIA



Fairlane has long been Australia's most distinguished luxury car, a vehicle that has attracted a large and loyal following. Australians have always found it easy to identify with Ford Fairlane because Fairlane has always reflected the Australian idea of what a luxury car should be.

Today's Fairlane Ghia does more than continue that long and proud tradition. In many respects, it represents a total rebirth of the Australian luxury car. It takes craftsmanship and engineering technology to new heights, to a level that challenges world standards.



An example of Fairlane Ghia's advanced nature can be found in the all important area of vehicle safety. By drawing upon Ford's world-wide resources, Fairlane Ghia has a driver air bag system that is the same advanced system used in the very latest vehicles in the USA, a market recognised as a world leader in this technology.

It's just one of the reasons why, with the advent of this exciting model, Fairlane consolidates its position at the pinnacle of Australian automotive achievement.



Fairlane has long been Australia's most distinguished luxury car, a vehicle that has attracted a large and loyal following. Australians have always found it easy to identify with Ford Fairlane because Fairlane has always reflected the Australian idea of what a luxury car should be.

Today's Fairlane Ghia does more than continue that long and proud tradition. In many respects, it represents a total rebirth of the Australian luxury car. It takes craftsmanship and engineering technology to new heights, to a level that challenges world standards.



An example of Fairlane Ghia's advanced nature can be found in the all important area of vehicle safety. By drawing upon Ford's world-wide resources, Fairlane Ghia has a driver air bag system that is the same advanced system used in the very latest vehicles in the USA, a market recognised as a world leader in this technology.

It's just one of the reasons why, with the advent of this exciting model, Fairlane consolidates its position at the pinnacle of Australian automotive achievement.

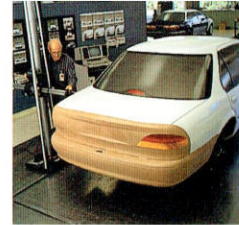
**CONCEPT**

To develop a vehicle that completely redefines the Australian luxury car.

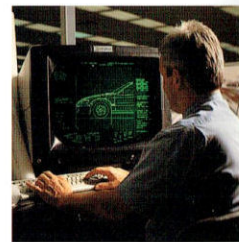
In the world of luxury cars, comfort and refinement have always been important and defining characteristics. So have craftsmanship, engineering sophistication and performance. But even when all those elements are present in abundance, there's still something more required: the essence of the driving experience, that special feeling of pleasure and satisfaction you get every time you

take the wheel. In the new Fairlane Ghia, it's a feeling designed and engineered into the car.

It's achieved by carefully and intelligently considering even the smallest details. It concerns the way a brake pedal feels, how a door panel fits, the way the crankshaft is balanced and the engine is mounted. It even involves seemingly insignificant issues like the sound the turn



▲ Sophisticated electronic instruments are used to ensure that design specifications are precisely translated to production models.



▲ In Ford's design centre, using CAD (Computer Aided Design), highly trained and creative designers employ the latest technology and work in conjunction with engineering staff through all stages of development.

To help Fairlane quality stand the test of time, five separate coating processes are applied to Fairlane Ghia.

- (1) The entire body is electro-chemically cleaned and prepared for painting.
- (2) The vehicle is dipped in primer.
- (3) A second primer coat is applied.
- (4) Top coat enamel and clear coat are applied.
- (5) Rustproofing wax is applied.



indicator makes and how the switches on the control panel feel to the touch. Such details all add colour to the big picture.

The Fairlane Ghia is spacious, luxurious and ergonomically efficient. It welcomes passengers with generous volumes of head, leg and shoulder room. And engenders in the driver a sense of well-being that comes from the way the car drives and responds.

Road and mechanical noise have been reduced to an unobtrusive level and numerous active and passive safety measures help to provide a more secure environment.

In fact, when it comes to vehicle safety, Fairlane Ghia, in significant respects, is designed not only to meet but to exceed world standards.

Aesthetically appealing styling, with flowing lines, handsome grille and bonnet ornament, Fairlane Ghia stands distinctively apart from other Australian luxury cars. All the style,



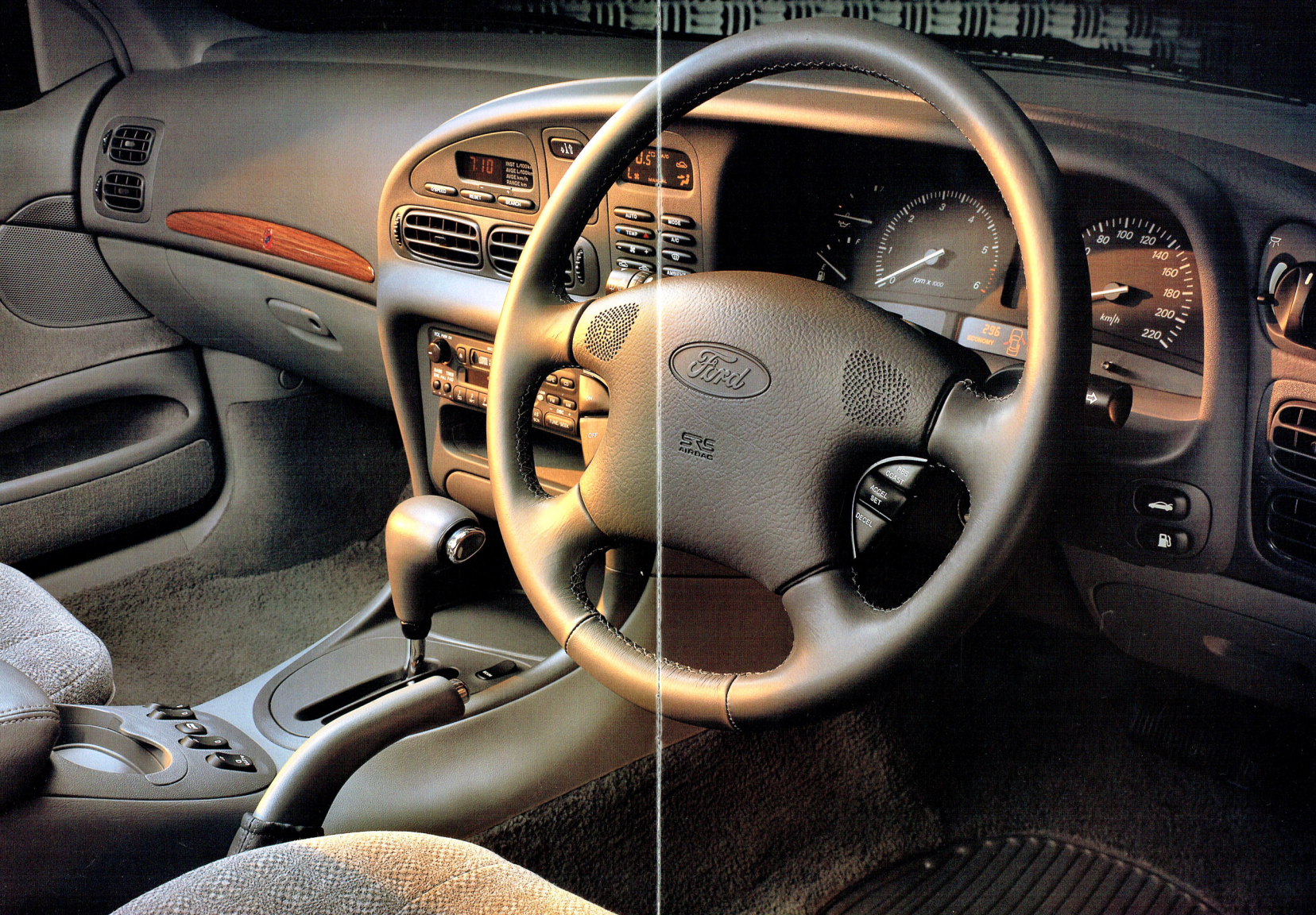
all the luxury and the unquestioned engineering sophistication place Fairlane Ghia in that special class, that select band of vehicles that are capable of capturing the imagination of luxury car buyers not only in Australia but anywhere in the world.

▲ Fairlane's aerodynamic styling contributes to the overall efficiency of the vehicle. The air flow is directed over and around the vehicle to reduce drag. The resultant lower drag coefficient combined with other engineering innovations and refinements promote efficient fuel usage.











## INTERIOR

### An inspired combination of comfort, luxury and ergonomic efficiency.

Inside, Fairlane Ghia greets you with luxurious velour seat fabric, rich wood grain and the generous volume of room and stretch-out comfort that has always been the hallmark of a true luxury car.



▲ The 8-speaker stereo sound system comprises 6-disc boot-mounted remote control CD player, AM/FM tuner and auto reverse cassette deck with Dolby B noise reduction, integrated digital clock and security coding.

The seats achieve the ideal balance of softness and support. Both front seats include adjustable lumbar support for greater lower back comfort. The rear seat offers more comfort than ever before.

The driver, always deserving of special consideration, enjoys a seat with adjustments for height and thigh support. A 6-way power seat is available as an option.

Wherever you look, you'll find ample evidence of a high standard

of craftsmanship and finish. The centre console is handsomely trimmed and contains a convenient cup holder, front and rear stowage bins have plush carpet facings, and the spacious glove compartment is finished with a quality flock lining.

Before the driver is a clean, clear display of information relating to engine performance and road speed. Fairlane Ghia's comprehensive instrumentation includes tachometer, speedo, odometer, trip meter, oil pressure gauge, battery voltage gauge, fuel gauge and temperature gauge.

All controls fall easily to hand, including those for the standard CD player. You also have the convenience of set-and-forget automatic climate control air conditioning.

A bank of warning lights and audible warnings combine to alert you in the event of high engine temperature, low fuel, low engine coolant or low oil pressure, or if a brake light or tail lamp is out.

They also serve as a reminder if you have left the headlights on and



▲ The leather-rimmed 4-spoke steering wheel provides an easy to reach location for the cruise control buttons.



▲ The trip computer supplies data relating to speed and fuel consumption. It also includes an 'overspeed' function that warns you if you exceed a pre-set speed.



▲ Fairlane Ghia gives you the convenience of 'set and forget' automatic climate control air conditioning. The system uses more environmentally friendly CFC-free refrigerant.



▲ The centre console houses the controls for Fairlane Ghia's front and rear power windows.



▲ Anyone for coffee? This convenient cup holder makes it easier to take a coffee break on long trips.

a service interval warning indicator tells you when a service is required.

An outline diagram of the car shows if the fuel lid, boot or any of the doors are open.

Considerate features include an audio system that can be played for one hour without the ignition key turned on and a time delay function that enables the power windows to be operated after the ignition has been switched off.

Instrument panel light dimming is nice to have when driving for extended periods at night.

Fairlane Ghia also comes ready



to install a fixed car phone. All the wiring is in place, and includes an antenna and 'audio mute' facility which silences the audio system when the phone rings.



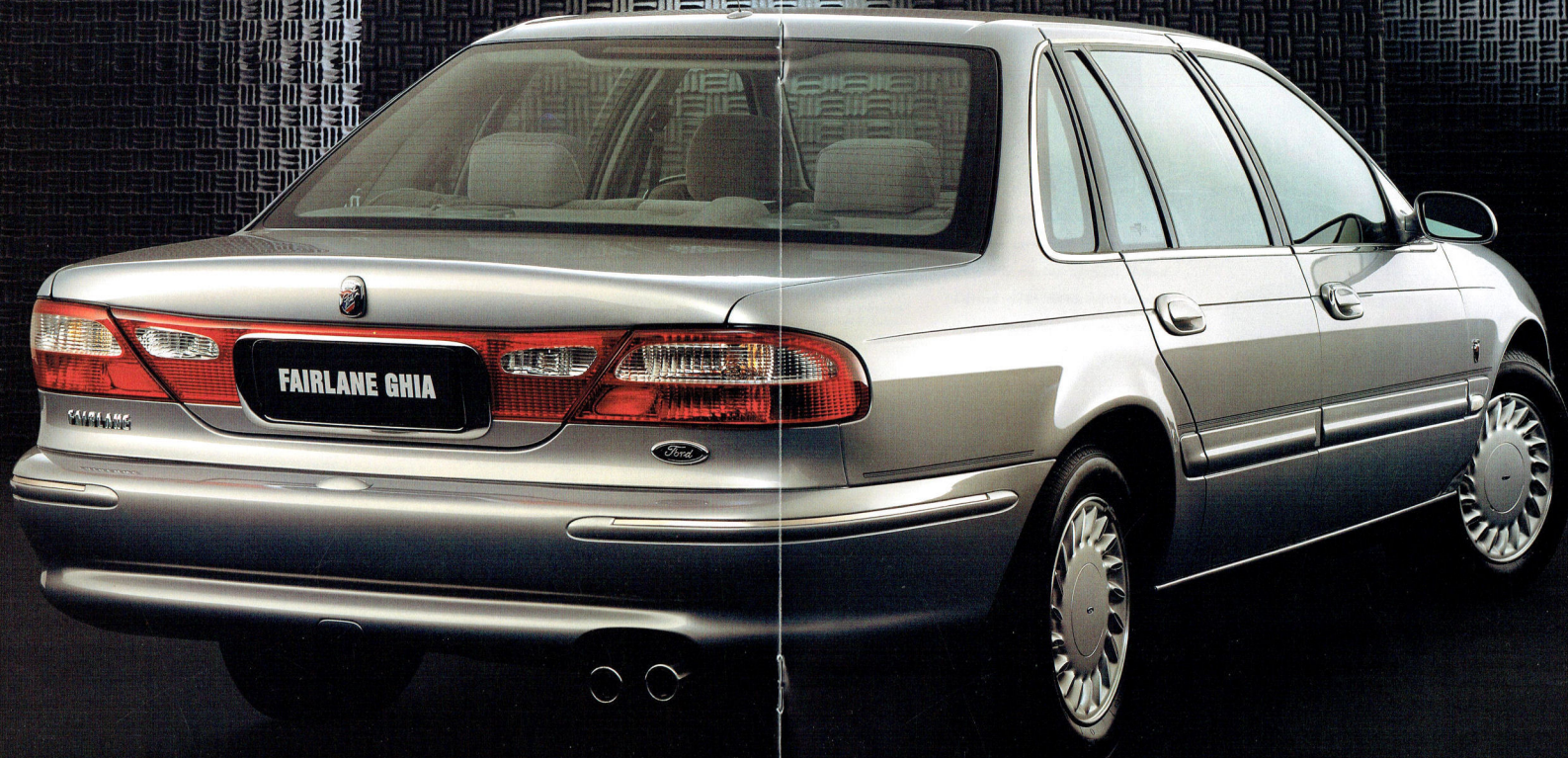
▲ Fairlane Ghia has the versatility to accommodate a variety of carrying needs. For example, the rear seat, which incorporates a comfortable armrest, has a 60/40 split fold backrest to handle long or awkward shaped objects in addition to one or two rear seat passengers.

▲ A driver's seat with power adjustments is available as an option.



▲ Fairlane Ghia's seats incorporate an important safety feature: strength. The strength of the front seat backs is designed to exceed the proposed 1995 Australian Design Rule (ADR) requirement by 200%.







At Ford, when it comes to vehicle safety we're never satisfied. Our safety program is dynamic and constantly evolving. Over successive generations of vehicles, our engineers have developed and incorporated an ever-increasing number of safety features into Fairlane Ghia.



However, with the latest Fairlane Ghia, the Ford safety evolution has achieved a new high standard. Not just for Ford, but for every Australian car maker. Possibly the most obvious of our latest innovations is the driver airbag standard on Fairlane Ghia. It is one of the most advanced systems available in the world today.



## SAFETY

### A new pinnacle in Ford's safety evolution.

Why is the driver airbag fitted to Fairlane Ghia so special? To understand, you have to appreciate the limitations of other systems.

The size, height, gender and seating position of a driver can

It is also reassuring to know that Fairlane Ghia's safety package was developed in conjunction with a program of crash tests that generated 36% more impact energy than the legal requirements of the proposed 1995 Australian Design Rule for crash protection.

#### AN INVISIBLE 'SAFETY COMPARTMENT'

A central concept to Fairlane Ghia's structural integrity has been the 'safety compartment', an invisible zone that provides a high level of occupant protection.

determine the effectiveness of an airbag in the event of a collision.

The Fairlane Ghia airbag has been designed to protect a spectrum of drivers, male and female, across a range of seating positions.

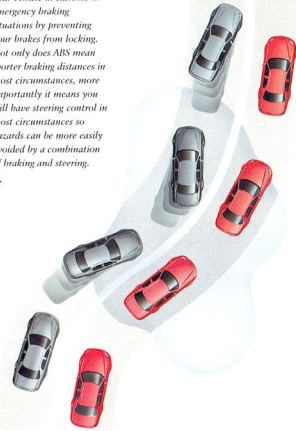
The Ford system also uses 3 sensors instead of just one to determine when the airbag should be deployed. These sensors are more discriminating in determining real world crash situations.



▲ The automatic climate control system in Fairlane Ghia uses CFC-free refrigerant. This Ford policy has resulted not only in a more environmentally friendly system but also a more efficient one.

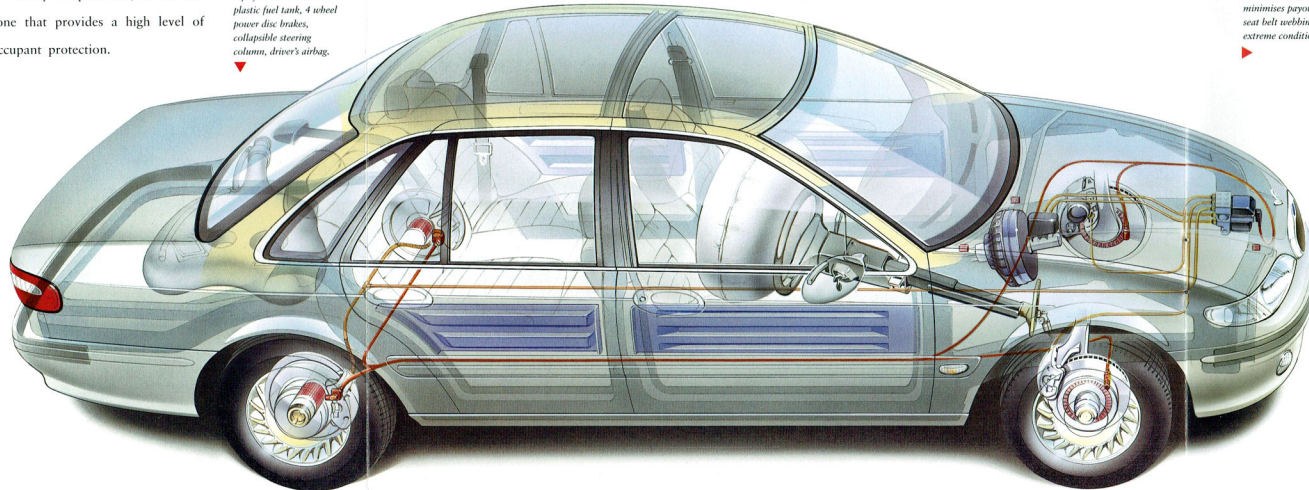
▲ The passenger compartment on Fairlane Ghia has been strengthened to the point where Fairlane Ghia's doors were able to be opened following 56 kph barrier tests. The compartment also features side intrusion beams, and integrated front and rear crumple zones. Other safety measures include plastic fuel tank, 4 wheel power disc brakes, collapsible steering column, driver's airbag.

Fairlane Ghia's standard four sensor, three channel Anti-lock Braking System (ABS) is designed to give you greater control over your vehicle in extreme or emergency braking situations by preventing your brakes from locking. Not only does ABS mean shorter braking distances in most circumstances, more importantly it means you still have steering control in most circumstances so hazards can be more easily avoided by a combination of braking and steering.



The 'safety compartment' comprises a number of interacting design elements. They include Fairlane Ghia's rigid frame, the roof construction, door pillars, side intrusion beams, the front and rear integrated crumple zones and other components.

Among other things, it has meant that Fairlanes of the past could withstand a force of 32kN (over three tonnes) in tests for US roof crush resistance standard FMVSS 216. In today's Fairlane Ghia, the roof crush strength has been further enhanced and is designed to exceed the US standard by 150%. The Fairlane Ghia is designed to meet stringent USA regulations for Dynamic Side Intrusion (FMVSS214) due to come into force in the USA in 1997.



▲ Fairlane Ghia possesses enormous roof crush strength. Ten new high strength steel structural reinforcements have been added to the body-side and roof structures. Fairlane Ghia is designed to exceed the standard US crush standard FMVSS 216 by 150%.

▲ Belt locker device minimises payout of seat belt webbing under extreme conditions.



▲ The vehicle's audio system is protected by another Ford anti-theft measure. A special security code renders the unit useless to thieves.

Primary safety features include engines with sufficient power not to be found wanting when extra response is called for. Steering and suspension systems that are precise and predictable.

Powerful braking systems, that include four wheel discs and an Anti-lock Braking System.

Other improvements have increased Fairlane Ghia's structural integrity to such a level that the doors could be opened following 56 kph (35 mph) barrier tests.

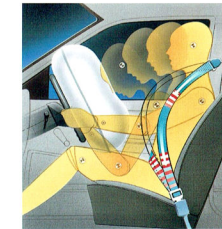


▲ The Fairlane Ghia keypad allows you to lock and unlock the boot lid by remote control. When you use the keypad to lock your vehicle the horn will sound momentarily to warn you if any of the doors are ajar.

#### AN UNCOMPROMISING ATTITUDE TO VEHICLE SECURITY

The latest technology has been applied in the area of vehicle security. This includes *Smartlock* vehicle immobilisation. It's a security system that's so smart you don't even have to remember to switch it on! *Smartlock* automatically immobilises the vehicle when the ignition key is removed.

Other Ford security initiatives include the coding of major vehicle components with a Vehicle Identification Number and a security-coded audio system.



Ten new high strength steel structural reinforcements have been added to the body sides and roof structure, further improving structural strength and stiffness.

#### PRIMARY SAFETY FEATURES

Fairlane Ghia's driver airbag and strengthened passenger compartment head an extensive list of safety measures.

6FPAAAJGWA146173



▲ Inertia reel seat belts with reinforced mountings front and rear help to protect all occupants, including the centre rear passenger. The front seat belts are height adjustable and have a special locking device that is designed to minimise any seat belt webbing payout in extreme circumstances.

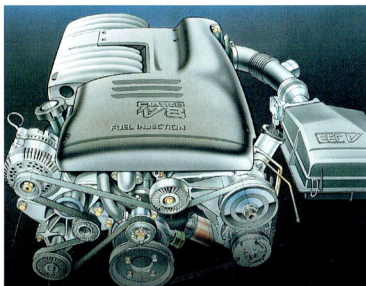
Every Ford is allocated a unique Vehicle Identification Number (VIN) which distinguishes the vehicle from all others on the road. Major vehicle components are permanently marked with the VIN as another way to help deter theft.



## POWER

### Refined performance – we deliver.

Ford has always had a reputation for producing engines that deliver plenty of free-flowing power. It's a legacy of performance that goes back more than thirty years.



▲ **5.0 LITRE V8.**  
Bore & stroke mm  
101.6 x 76.2  
Cylinder head  
Push-rod cast iron  
Displacement cc  
4942  
Compression ratio  
9.0:1  
Fuel injection  
Sequential multipoint  
Fuel System  
Electronic sequential  
multipoint fuel injection  
controlled by EEC-V  
Engine Control Module  
Fuel  
Regular Unloaded  
Max Power DIN kW/rpm  
165/4500  
Max Torque  
Nm/rpm 388/3000

Today's Fairlane Ghia continues that tradition of innovation and refinement. Ford's engineers have taken the highly acclaimed 4.0 litre six cylinder multipoint EFI engine and, with craftsmanlike precision, achieved a top end power increase of 9 kW, a mid-range torque boost of a staggering 28Nm or approximately 9%, and, importantly, a 4% improvement in fuel economy. It means power per litre comparable with the Jaguar 6.0 litre

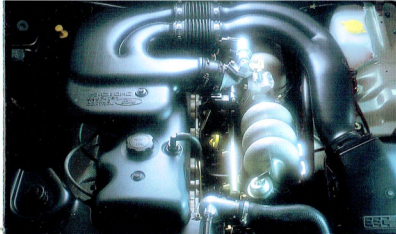
V12 engine, and torque per litre comparable with the BMW 5.0 litre V12 engine.

The performance and efficiency gains described above have been achieved by implementing what we call Computer Torque Control (CTC), a term that collectively describes the improvements we've made. It works in conjunction with a new generation EEC-V (Engine Electronic Control) computerised engine management system which has substantially more processing power than the unit it replaces.

CTC embraces innovations such as a Dual Resonance Intake Manifold which features dual air intake runners directly to the inlet port of the cylinder head. One runner is always open, the second is managed by the EEC-V system. By controlling the way the engine breathes, low speed torque is boosted.

With electronic distributorless ignition, three coils are used to fire two spark plugs each cycle. The camshaft profile and timing have been revised to suit the wider torque

▶ **4.0 MULTIPPOINT EFI.**  
Bore & stroke mm  
92 x 99  
Cylinder head  
OHC Aluminium alloy  
Displacement cc  
3984  
Compression ratio  
9.3:1  
Air induction  
Dual resonance intake  
manifold  
Fuel System  
Electronic Multipoint  
fuel injection controlled  
by EEC-V Engine  
Control Module  
Fuel  
Regular Unloaded  
Max Power DIN kW/rpm  
157/4900  
Max Torque Nm/rpm  
357/3000



band. A revised throttle pedal and linkage serve to make the engine more responsive.

For drivers who enjoy the uncompromising power of a V8 engine, Ford offers one as an option.

The 5.0 litre Fairlane Ghia V8 engine is equipped with Sequential Multipoint electronic fuel injection, which is sequenced with engine valves to inject fuel at precisely the right moment for optimum efficiency. It's designed to develop a stirring 165 kW at 4500 rpm. With tremendous torque figures of 388 Nm at 3000 rpm. All of which is delivered smoothly and efficiently – this engine is one of the most fuel-efficient V8s ever made.

*The smooth flow of power from the 4.0 litre multipoint EFI six cylinder and V8 engines makes towing a breeze. Power assisted rack and pinion steering assists manoeuvrability and reduces driving effort.*





## An impressive balance of comfort and roadholding.

Transferring Fairlane Ghia's free-flowing power to the road is a smooth and efficient process, thanks to Ford's advanced electronically controlled four-speed automatic transmission that matches the performance potential of the six cylinder and V8 engines.



▶ The smooth and versatile Australian-made four-speed electronically controlled automatic transmission produces outstanding fuel economy with quiet operation. Fuel-saving features include an optional "economy" switch changeable by the driver to suit driving conditions.

The four-speed automatic, renowned for its smooth and quiet operation, offers the option of an 'Economy' operating mode. The 'Economy' mode provides more fuel efficient operation.

When a car is well balanced, smooth and agile, you can feel it. It's a feeling that comes when the engine, transmission, steering and suspension are working in complete harmony. It's the feeling you get in

today's Fairlane Ghia. The power assisted rack and pinion steering is positive, precise and delivers excellent road feel.

The rear suspension on Fairlane Ghia employs the proven and reliable self-levelling Watts

Link system, renowned for providing outstanding stability especially when towing.

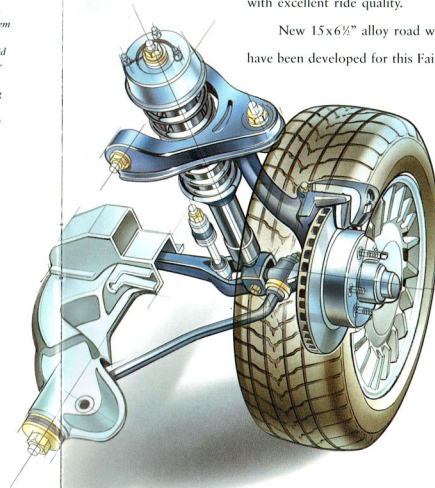
It is equipped with new rear upper arms which are designed to isolate unwanted vibration from the passenger compartment.

In the front, Fairlane Ghia is equipped with an advanced version of the strong and reliable short and long arm, long spindle (SLALS) configuration. Revised steering geometry improves steering response.

Larger, variable rate bushes in the suspension reduce harshness and tyre noise and 50% larger (18mm diameter) shock absorber rods



▶ Fairlane Ghia's dynamic safety features are enhanced by its finely tuned suspension system which comprises the proven Watts Link rigid axle system in the rear and the strong and reliable short and long arm, long spindle (SLALS) configuration at the front.



▶ The revised front suspension improves steering response and reduces harshness and road noise. Fairlane Ghia's powerful non-asbestos braking system now requires less pedal effort. Fade resistance has been increased for more effective braking.

contribute to providing Fairlane Ghia with excellent ride quality.

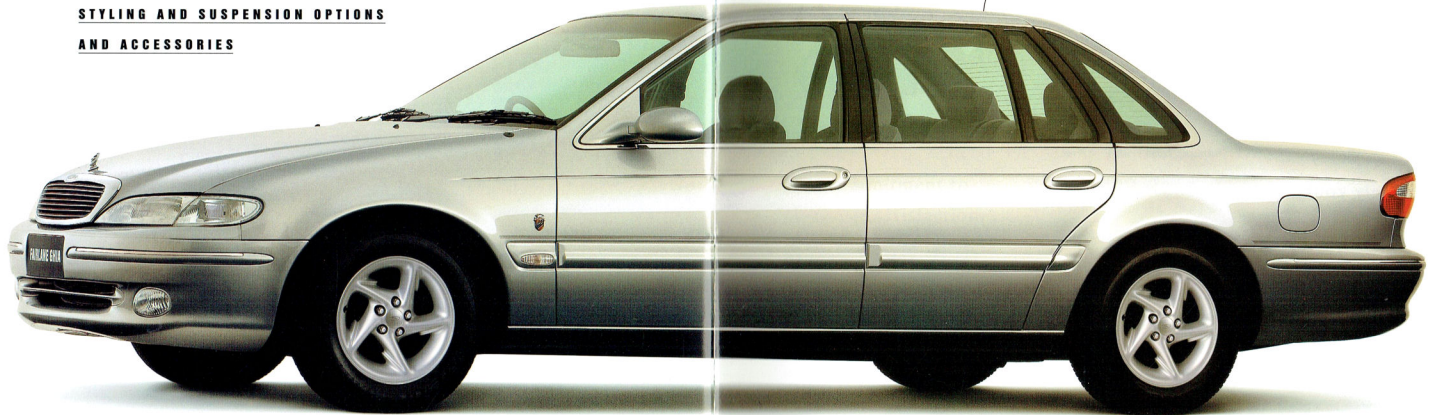
New 15x6½" alloy road wheels have been developed for this Fairlane

Ghia. They're matched to low profile steel belted radial tyres.

A car that produces remarkable performance requires nothing less than a performance braking system. Which is why Fairlane Ghia is equipped with power assisted four-wheel disc brakes and ABS. It's the most efficient system ever fitted to a Fairlane.



**STYLING AND SUSPENSION OPTIONS  
AND ACCESSORIES**



Because everyone is an individual.

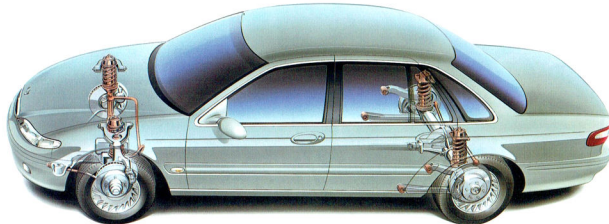
Many people will be quite prepared to take a Fairlane Ghia exactly as specified on the preceding pages. There are others who are disposed to a sportier way of life.

These Ford options, many developed by *Tickford Vehicle Engineering*, Ford's partner in performance enhanced vehicles, give such performance-minded people the opportunity to endow their Fairlane Ghia with a sportier appearance and

handling. There's also a selection of touring kits and other options.

This is the best way to go about it too, because all the options detailed here are specifically made for Ford vehicles from high quality materials. And because they're installed before delivery, you're assured of proper fit and compatibility and gain the benefits of the Ford 24 month/50,000 km Express New Vehicle Warranty.

Fairlane Ghia performance handling packages include stiffer front and rear springs, new sports-tuned shock absorbers and bushes, new front stabiliser bar and revised wheel alignment.



▲ Fairlane Ghia with 16" wheels and tyres and sports suspension.

**TOURING SUSPENSION**



Luxurious comfort and responsive handling are combined in the Fairlane Ghia. The Touring Suspension, with special springs, shock absorbers, stabiliser bars and linkages, offers a similar combination but with more emphasis on responsive handling. It also provides a lower ride height.

**SUNROOF**



Precision crafted electric glass sunroof fully imported from Germany. Versatile operation - as a tilted vent to assist ventilation, and partially or fully open to increase your enjoyment of the great outdoors. Automatic pop-up wind deflector reduces wind noise and buffeting.

**16" WHEELS AND TYRES**



Impressive 16" x 7" five spoke alloy wheels fitted with high performance Michelin 225/50 VR 16 tyres. Designed to utilise vehicle handling, provide a bolder appearance and retain good ride quality. (Available only in combination with the optional Touring Suspension.)

**1600 kg RATED TOW PACK**

Specifically designed for Fairlane Ghia. 1600 kg capacity. Includes the towbar with painted tongue, wiring harness, 7-pin connector, reinforcement brackets, and transmission oil cooler.

**2300 kg TOW PACK**

2300 kg rated capacity.\* Features Heavy Duty towbar and Load Distributing Hitch, trailer

wiring kit, revised turn signal flasher, and transmission oil cooler.

**HEAVY DUTY TOW PACK**

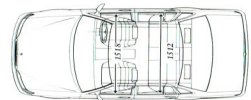
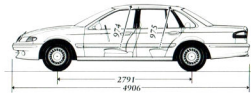
For those who already have a 2100 kg or 2300 kg Load Distributing Hitch and who want a compatible towbar on their new Ford. Features Heavy Duty Towbar (2300 kg rated capacity when used with 2300 kg Load Distributing Hitch)\*, trailer wiring kit, revised turn signal flasher, transmission oil cooler and a 1600 kg rated capacity plug-in tow ball mount.

\*Subject to State and Territory regulations.

**CAR ALARM**

Available as a Dealer fit Ford accessory. A sophisticated and highly sensitive alarm system designed to help protect your new Ford. It is fully integrated with the

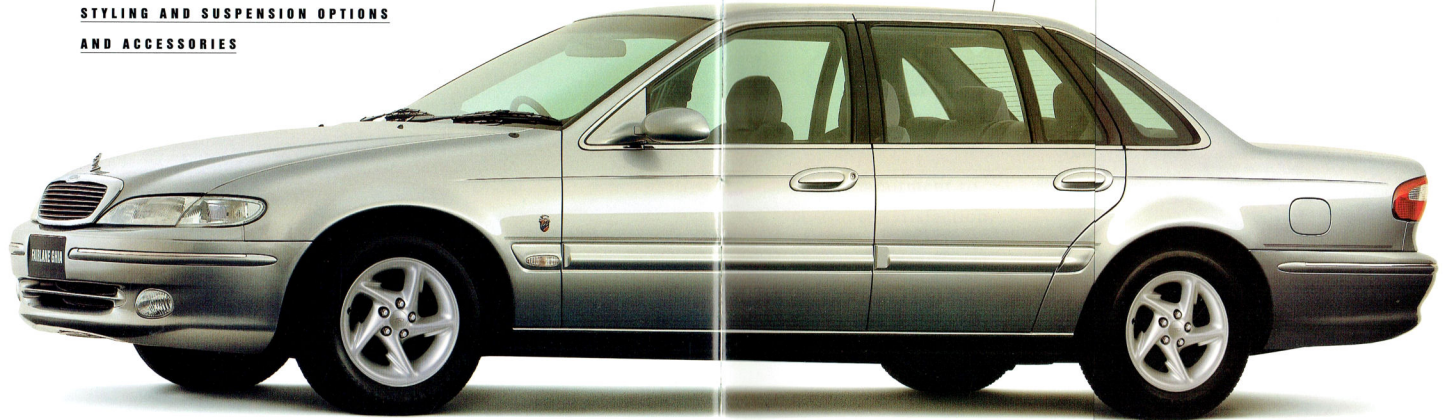
vehicle's *Smartlock* electronic immobilisation and keyless entry system. Features include remote active arming, and disarming auto arming selectable, rearming if no entry after 120 seconds, starter cut-out, shock detector.



All dimensions are shown in (mm).



**STYLING AND SUSPENSION OPTIONS  
AND ACCESSORIES**



Because everyone is an individual.

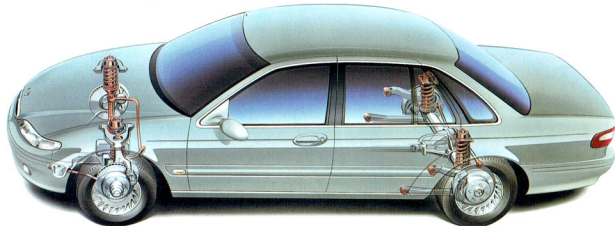
Many people will be quite prepared to take a Fairlane Ghia exactly as specified on the preceding pages. There are others who are disposed to a sportier way of life.

These Ford options, many developed by *Tickford Vehicle Engineering*, Ford's partner in performance enhanced vehicles, give such performance-minded people the opportunity to endow their Fairlane Ghia with a sportier appearance and

handling. There's also a selection of towing kits and other options.

This is the best way to go about it too, because all the options detailed here are specifically made for Ford vehicles from high quality materials. And because they're installed before delivery, you're assured of proper fit and compatibility and gain the benefits of the Ford 24 month/50,000 km Express New Vehicle Warranty.

Fairlane Ghia performance handling packages include stiffer front and rear springs, new sports-tuned shock absorbers and bushes, new front stabiliser bar and revised wheel alignment.



▲ Fairlane Ghia with 16" wheels and tyres and sports suspension.

**TOURING SUSPENSION**



Luxurious comfort and responsive handling are combined in the Fairlane Ghia. The Touring Suspension, with special springs, shock absorbers, stabiliser bars and linkages, offers a similar combination but with more emphasis on responsive handling. It also provides a lower ride height.

**SUNROOF**



Precision crafted electric glass sunroof fully imported from Germany. Versatile operation – as a tilted vent to assist ventilation, and partially or fully open to increase your enjoyment of the great outdoors. Automatic pop-up wind deflector reduces wind noise and buffeting.

**16" WHEELS AND TYRES**



Impressive 16" x 7" five spoke alloy wheels fitted with high performance Michelin 225/50 VR 16 tyres. Designed to utilise vehicle handling, provide a bolder appearance and retain good ride quality. (Available only in combination with the optional Touring Suspension.)

**1600 kg RATED TOW PACK**

Specifically designed for Fairlane Ghia. 1600 kg capacity. Includes the towbar with painted tongue, wiring harness, 7-pin connector, reinforcement brackets, and transmission oil cooler.

**2300 kg TOW PACK**

2300 kg rated capacity? Features Heavy Duty towbar and Load Distributing Hitch, trailer



▲ Front Sunvisor  
Adds style and helps to protect from sun and glare.



▲ Weatherblinds  
Tough acrylic shield styled to help protect against wind and light rain. Available for both sides of vehicle.



▲ Front Approved Headlamp Guards  
Don't take chances – the wrong headlamp guards can be dangerous. These headlamp guards are fully tested by Ford and meet Australian Design Rules. Photometrically tested for your safety means protection with peace of mind!

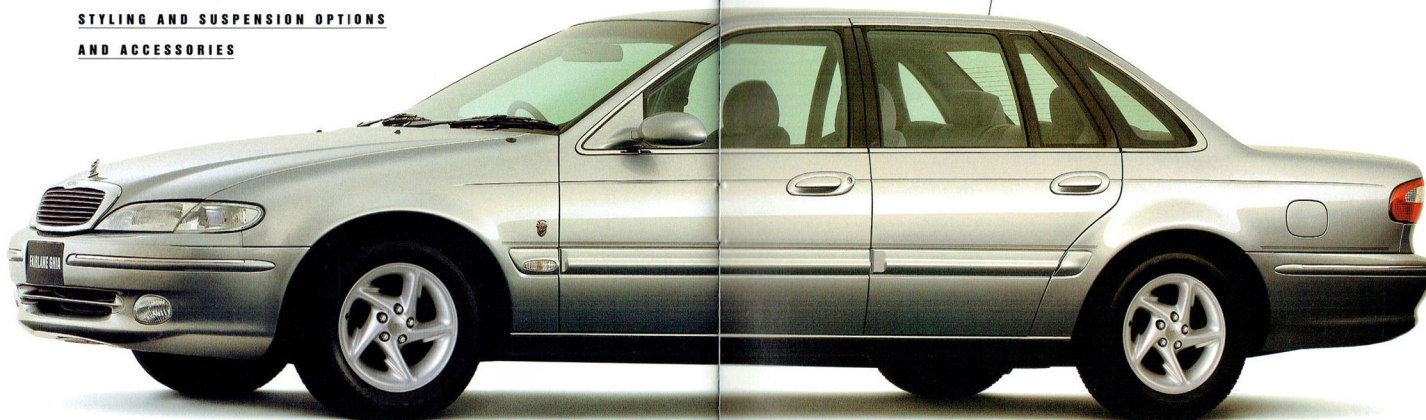


▲ Styled Mudflaps  
Look good and help to keep slush and road spray off the bodywork. Styles for front and rear.

Towbar Wiring Kit  
All the electrical wiring and connections you need to prepare your Fairlane Ghia for towing a van or trailer.



**STYLING AND SUSPENSION OPTIONS  
AND ACCESSORIES**



Because everyone is an individual.

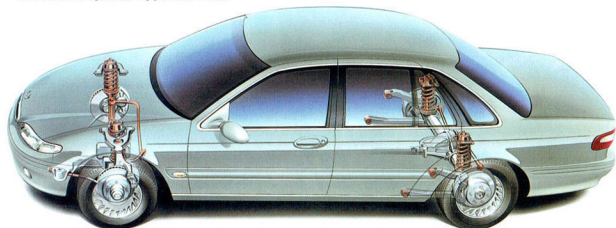
Many people will be quite prepared to take a Fairlane Ghia exactly as specified on the preceding pages. There are others who are interested in a sportier way of life.

These Ford options, many developed by *Tickford Vehicle Engineering*, Ford's partner in performance enhanced vehicles, give such performance-minded people the opportunity to endow their Fairlane Ghia with a sportier appearance and

handling. There's also a selection of towing kits and other options.

This is the best way to go about it too, because all the options detailed here are specifically made for Ford vehicles from high quality materials. And because they're installed before delivery, you're assured of proper fit and compatibility and gain the benefits of the Ford 24 month/50,000 km Express New Vehicle Warranty.

*Fairlane Ghia performance handling packages include stiffer front and rear springs, new sports-tuned shock absorbers and bushes, new front stabiliser bar and revised wheel alignment.*



▲ Fairlane Ghia with 16" wheels and tyres and sports suspension.

**TOURING SUSPENSION**



Luxurious comfort and responsive handling are combined in the Fairlane Ghia. The Touring Suspension, with special springs, shock absorbers, stabiliser bars and linkages, offers a similar combination but with more emphasis on responsive handling. It also provides a lower ride height.

**SUNROOF**



Precision crafted electric glass sunroof fully imported from Germany. Versatile operation – as a tilted vent to assist ventilation, and partially or fully open to increase your enjoyment of the great outdoors. Automatic pop-up wind deflector reduces wind noise and buffeting.

**16" WHEELS AND TYRES**



Impressive 16" x 7" five spoke alloy wheels fitted with high performance Michelin 225/50 VR 16 tyres. Designed to utilise vehicle handling, provide a bolder appearance and retain good ride quality. (Available only in combination with the optional Touring Suspension.)

**1600 kg RATED TOW PACK**

Specifically designed for Fairlane Ghia. 1600 kg capacity. Includes the towbar with painted tongue, wiring harness, 7-pin connector, reinforcement brackets, and transmission oil cooler.

**2300 kg TOW PACK**

2300 kg rated capacity\*. Features Heavy Duty towbar and Load Distributing Hitch, trailer

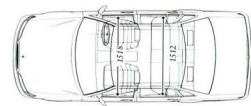
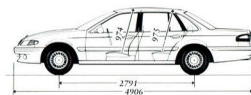
wiring kit, revised turn signal flasher, and transmission oil cooler.

**HEAVY DUTY TOW PACK**

For those who already have a 2100 kg or 2300 kg Load Distributing Hitch and who want a compatible towbar on their new Ford. Features Heavy Duty Towbar (2300 kg rated capacity when used with 2300 kg Load Distributing Hitch)\*, trailer wiring kit, revised turn signal flasher, transmission oil cooler and a 1600 kg rated capacity plug-in tow ball mount. \*Subject to State and Territory regulations.

**CAR ALARM**

Available as a Dealer fit Ford accessory. A sophisticated and highly sensitive alarm system designed to help protect your new Ford. It is fully integrated with the



All dimensions are shown in (mm).

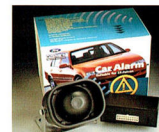
vehicle's *Smartlock* electronic immobilisation and keyless entry system. Features include remote active arming, and disarming auto arming selectable, rearming if no entry after 120 seconds, starter cut-out, shock detector.



▲ **Standard Towbar**  
Rated at 1200 kg for manual vehicles and 1600 kg for autos. Designed to conform to Australian Design Rule (ADR 62) specifications.



▲ **Heavy Duty Towbar**  
(with 1600 kg adaptor)  
2300 kg towing capacity with the aid of hitch and load levelling device (purchased separately).

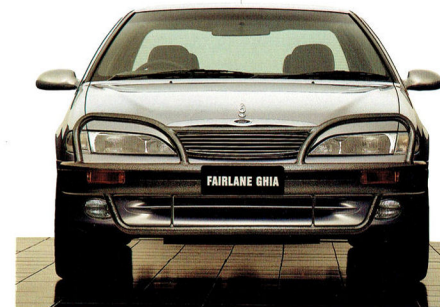


▲ **Ford Car Alarm**  
The only Ford approved car alarm compatible with Ford's *Smartlock* keyless entry and vehicle immobilisation system. Features include battery backup siren, shock sensor, triggered sector warning, error warning. Ultrasonic movement sensors available as options.



▲ **Carpet Mats**  
Help protect your Fairlane Ghia carpet from wear and soiling with these heavy duty styled plush pile mats. Feature unique anti-slip backing system.

▲ **Transmission Oil Cooler Kit**  
Specially designed to meet the heavy demands of towing.



▲ **Outback Protection Bar**  
The only Ford Approved protection bar available for Fairlane Ghia. Complies with all current and projected Australian

Design Rules and is fully compatible with the Ford airbag system. Complements Fairlane's aerodynamic styling. Please note: A non-

integrated protection bar could cause unwanted low speed airbag misfires or render the airbag useless during a high speed crash.





Exclusively yours.

One of the many rewards of owning a prestige vehicle like Fairlane Ghia is entitlement to the Ford Prestige Service Plan, which takes effect from the date you purchase your new car and provides assistance and peace of mind for 3 years.

The Ford Prestige Service Plan is part of Fordcare and is exclusive to owners of Ford prestige vehicles.

Among the many benefits offered are:

- 24 hr Emergency Roadside Assistance in the event of mechanical breakdown.
- Emergency towing and vehicle recovery service.
- One night's free emergency accommodation for up to 5 people in certain circumstances.
- Free emergency rental car assistance in certain circumstances.
- General assistance with medical matters.

- Assistance with cancellation or re-booking of any pre-arranged travel and accommodation.
- Urgent message relay anywhere in Australia.

For further details and conditions applying to the Plan, please consult your Ford Prestige Service Plan introduction pack.

In the event of a mechanical breakdown, these special services can be accessed from anywhere in the country, 24 hours a day, 365 days a year via a toll-free hotline.

The number is clearly shown on your personal owner identification card.

You will receive your card with your Ford Prestige Service Plan introduction pack. Keep it safe and always take it with you when you drive.

The card carries individual details about your vehicle and gives you access to all the services provided by the Ford Prestige Service Plan.

AN EXTRA SPECIAL SERVICE

All Ford owners are special to us. But as the owner of a new prestige vehicle like a Fairlane Ghia you're entitled to expect considerations that reflect your valued status.

So to assist you in arranging routine servicing of your vehicle, the Ford Prestige Service Plan provides a central booking facility for any Authorised Ford Dealer-ship you choose.

And to make sure we're doing our job properly, you will receive a follow-up call after your service has been carried out to make certain you are fully satisfied with the work.

SERVICE LOAN VEHICLE

If your Fairlane Ghia has to spend more than 24 hours at the servicing dealership in order for any warranty repairs to be carried out, a free loan vehicle will be available for you to use until your car is ready.

Our commitment to customer satisfaction.



Fordcare is a whole range of programs, products and services designed to make Ford owners the most satisfied motor vehicle owners in Australia.

Fordcare starts when you enter an Authorised Ford Dealer's showroom. It's there when you take delivery of your new Ford and it continues for the life of the vehicle. That means first class service for you at all times, and nothing less than the best for your Ford from our extensive network of Authorised Ford Dealers.

As motor vehicles become more sophisticated and technically advanced, specialised care and maintenance becomes more vital.

Fordcare provides the technical equipment and expertise to help keep your Ford operating in peak condition. The well-being of your Ford is supported by these express warranties.

Further information on these warranties may be obtained from your Authorised Ford Dealer.

THE FORD  
24 MONTH/50,000 KM  
EXPRESS NEW VEHICLE

WARRANTY



Covers your Ford against defects in factory materials or workmanship for the first 24 months or 50,000 km - whichever occurs first.

When fitted at time of vehicle purchase, Ford Approved Accessories are also covered by the Ford 24 month/50,000 km Express New Vehicle Warranty.

LIFETIME SERVICE

WARRANTY



Covers the majority of part repairs/replacements, including labour, carried out by your Authorised Ford Dealer after the expiration of the initial Ford 24 month/50,000 km Express New Vehicle Warranty. It means you will only ever pay once for repairs covered by the Warranty under normal driving conditions.

LIFELONG PANEL WARRANTY



Covers replacement of outer body panels against perforation corrosion for the life of the vehicle.

FIVE YEAR PERFORATION

CORROSION WARRANTY

Covers the original vehicle's

body against perforation corrosion for the first five years of its life.

FORD CUSTOMER

ASSISTANCE CENTRE



We're always happy to hear from you and you will find our Customer Assistance Representatives responsive to your needs.

Our Representatives can assist with Fordcare servicing information and with any general enquiry about your vehicle that calls for special information beyond the scope of your Authorised Ford Dealer.

Customer Assistance Centre  
Phone 008 333 306 (TOLL FREE), in Melbourne phone 359 7023.

FORD LEASING



Ford Leasing and Red Carpet Options are available to approved applicants of Ford Credit Australia Limited. Enquire at your Authorised Ford Dealer.

FLEET COMMUNICATION

CENTRE



Our Fleet Communication Centre is available to assist fleet customers with information on Ford products and services.  
Phone 008 673 207.

This brochure is designed to provide you with a general introduction to the Ford Products (including available optional equipment) referred to, and should be read in conjunction with the latest specification sheet. Because of changes in conditions and circumstances Ford reserves the right, subject to all applicable laws, at any time, at its discretion, and without notice, to discontinue or change the features, designs, materials, colours and other specifications and the prices of their products, and to either permanently or temporarily withdraw any such products from the market without incurring any liability to any prospective purchaser or purchaser. The latest specification sheet should be referred to for information on the availability, ordering and use of optional equipment. Always consult an Authorised Ford Dealer for the latest information with respect to features, specifications, prices, optional equipment and availability before deciding to place an order. FORD MOTOR COMPANY OF AUSTRALIA LIMITED, (A.C.N. 004 416 221) Registered Office: 1755 Sydney Road, Campbellfield, Victoria 3084, Australia. Printed January 1995.





FORD. PROUD SPONSOR AUSTRALIAN OLYMPIC GAMES TEAM.



# Standard Equipment: Ford Fairlane Ghia

## MECHANICAL

- 4.0 litre OHC engine with multipoint electronic fuel injection and computer torque control
- Electronic engine control (EECV) system
- 4 speed electronically controlled floor automatic transmission with lock-up torque converter, optional economy mode and overdrive
- Short and long arm, long spindle front suspension
- Auto self levelling Watts Link rear suspension
- Front and rear stabiliser bars
- Four wheel disc brakes with asbestos free pads
- Anti-lock braking system (ABS)
- Power assisted rack and pinion steering

## EXTERIOR

- Body coloured exterior door handles
- Full body coloured front and rear bumpers including body colour inserts with chrome highlights
- Body coloured valance
- Bright chrome hood mounted grille
- Wide section colour keyed bodyside protection mouldings
- P205/65 HR15 steel belt radial ply tyres
- 15" x 6.5" JJ alloy wheels with centre cap
- Clear turn signal lamps
- Colour keyed foldaway exterior rear view mirrors with electric remote control
- Two speed front windscreen wipers with variable intermittent setting, demand wash/wipe and demand wipe feature
- Rear window demister with timed automatic switch off feature
- Full tinted laminated windscreen with tinted band
- Tinted side and rear glass
- Front cornering lamps
- Chrome window surrounds
- High jewel polycarbonate headlamps with twin pocket high beam
- Rear glass ceramic sunshade
- Rear high mounted stop lamp
- Twin rear chrome exhaust tip
- Chrome front bonnet Ghia emblem
- Ducted air intake system
- Chrome swingaway decklid back cover
- Full width boot lid applique with rear chrome number plate surround
- Body coloured licence plate lamp
- Integral phone aerial base with wiring and aerial included
- Styled pinstriping

## INTERIOR

- "Smart Lock" electronic immobilisation and keyless entry system
- High security locking system featuring "Tibbe" locks on doors, ignition and boot, recessed door lock buttons and strengthened steering column lock housing
- Digital clock with trip computer display including overspeed warning
- Luna Mist trim or Cappuccino Trim available (restricted trim/colour combinations exist)
- Standardised child seat anchorage bolt fitted
- Colour keyed carpets
- Full inner deck lid trim

### Driver

- Deluxe leather wrapped steering wheel incorporating cruise control switches and horn
- Adjustable rake and reach steering column
- Prismatic day/night interior rear view mirror
- Driver's left footrest
- Variable intensity instrument lighting switch
- Warning lights: High beam, Rear window demister on, Turn signal/hazard, Alternator, Suspension check, Economy mode indicator, Low oil pressure, Airbag, Seat belt, Brake failure, ABS, Security, Lamps on, Service Indicator, Park brake on, Washer fluid low, Radiator fluid low, Fuel low, High temperature, Cruise control indicator, Car outline diagram for Door, Boot, Fuel filler door open
- Audible warning chimes: Low fuel, Lights on, Low oil pressure, High engine temperature, Suspension check, Turn signals, Service interval reset acknowledgement, Brake and tail lamp out warning, Overspeed warning
- Gauges: Speedometer, Odometer, Service indicator, Tripmeter and fuel gauge, Water temperature gauge, Tachometer, Oil pressure, Battery voltage, PRNDL indicators
- Cruise control
- Dual horns
- Power door locks with remote keyless entry
- Power windows with time delay after key off
- Remote fuel filler release
- Remote boot release
- Power antenna with half/full height function
- Driver air bag
- Floor mounted vinyl wrap park brake with chrome button
- Power window over ride switch
- Soft feel T-bar handle with chromed button and stalk

## INTERIOR (continued)

### Seating

- Large centre console with power window controls, centre armrest and drink cup holders
- Driver and passenger seat fore and aft adjustment
- Driver and passenger seat infinite adjustable recline
- Driver's seat thigh and height adjustment (power seat optional)
- Adjustable driver and passenger lumbar support
- Front and rear adjustable headrests
- 60/40 split fold down rear seat backrest with large centre armrest
- Front inertia reel seat belts with "belt lockers", rear inertia reel lap sash seat belts for all passengers
- Padded front and rear arm rests
- Adjustable B pillar seat belt anchorages for front seat driver and passenger

### Cabin

- Cloth covered sunvisors with passenger vanity mirror and light
- Woodgrain door trim inserts and instrument panel
- Driver and passenger pleated seat back map pockets
- Integrated grab handles and coat hooks
- Moulded cloth covered headlining
- Carpeted passenger and luggage compartment floor
- Interior light with twin spot lamps
- Illuminated entry and exit system
- Rear reading lamps
- Front and rear door entry lamps
- Rear footwell lamps
- Luggage compartment lamp
- Illuminated front cigar lighter and ashtray
- Illuminated, lockable and flock lined glove box
- Childproof rear door locks
- Automatic climate control system with integrated CFC (chloro fluoro carbons) free air conditioning with rear seat ducts and auto temperature control
- Chrome interior door handles
- Front door carpeted map pockets/storage compartment
- Deluxe AM/FM stereo cassette deck with 8 speaker elements 60 watts with boot mounted 6 stack CD player and security code feature

**HAVE YOU DRIVEN A FORD... LATELY?**

FORD FAIRLANE GHIA





# Ford Fairlane Ghia Specifications

## FORD FAIRLANE GHIA

Engine	4.0 litre Multipoint EFI	5.0 litre Multipoint EFI
Bore & Stroke mm	92.26×99.3	101.6×76.2
Cylinder Head	OHC aluminium alloy	OHV cast iron
Displacement cc	3984	4942
Compression Ratio	9.3:1	9.0:1
Fuel System	Electronic fuel injection controlled by EECV engine management system	
Fuel Required	Regular unleaded	Regular unleaded
Max Power DIN kW/rpm	157/4900	165/4500
Max Torque Nm/rpm	357/3000	388/3000
<b>Suspension</b>		
Front	Rear	
<ul style="list-style-type: none"> <li>• Short and Long Arm, Long Spindle (SLALS) design</li> <li>• Single rate coil springs</li> <li>• Twin tube telescopic shock absorbers mounted co-axially within the coil spring</li> <li>• Stabiliser bar</li> </ul>	<ul style="list-style-type: none"> <li>• Rigid axle</li> <li>• 4 trailing arms with Watts Linkage</li> <li>• Single rate coil springs</li> <li>• Twin tube telescopic shock absorbers mounted co-axially within the coil springs</li> <li>• Stabiliser bar</li> <li>• Auto self levelling rear suspension</li> </ul>	
<b>Brakes</b>		
FRONT: Power assisted ventilated disc : 287mm		
REAR: Power assisted disc : 299mm		
<b>Dimensions</b>		
<b>Exterior (mm)</b>		
Overall length	5122	
Overall height	1428	
Overall width	1861	
Wheelbase	2919	
Front track	1566	
Rear track	1547	
Front overhang	919	
Rear overhang	1283	
<b>Interior (mm)</b>		
Front headroom	974	
Front legroom	1081	
Front shoulder room	1514	
Rear headroom	985	
Rear legroom	1084	
Rear shoulder room	1503	
<b>General</b>		
Kerb weight (kg)	1642 (c)	
Luggage capacity (litres)	492	
Fuel tank capacity (litres)	68	
Min turning circle (m) - diameter	11.29	

## Selected Fuel Consumption Data

Engine/Transmission/Bodystyle	City Cycle (l/100km)	Highway Cycle (l/100km)
4.0 L MP EFI Auto Fairlane Ghia	13.0	8.0
5.0 L MP EFI Auto Fairlane Ghia	14.5	9.0

These figures are obtained from controlled laboratory tests conducted by Ford Motor Company of Australia Limited to Australian Standard AS2877 and are provided to assist you in comparing the fuel consumption of Fairlane with other vehicles. **The actual fuel consumption you achieve will depend, however, on many factors, including your driving habits, the prevailing conditions and your vehicle's equipment, condition and use.**

## Optional Equipment

Option	Fairlane Ghia
Car alarm (e)	OPT
1600 kg rated tow pack (a)	OPT
Heavy duty tow pack (a)	OPT
2300 kg tow pack (a)	OPT
Prestige paint (b)	NCO
Sunroof	OPT
Touring suspension	OPT
16" alloy wheels with P225/50 ZR16 tyres (d)	OPT
Limited slip differential	OPT
Power seat (f)	OPT

## Engine/Transmission Combinations

Engine/Transmission	Fairlane Ghia
4.0 litre Multipoint EFI 4 speed auto	STD
5.0 litre Multipoint EFI 4 speed auto	OPT

## Towing Capacity (Subject to applicable legislation and tow bar capacity)

Transmission	Ford Approved 1600 kg Rated Tow Pack	Ford Approved Heavy Duty Tow Pack (with 1600 kg Rated Ball Mount)	Ford Approved 2300 kg Tow Pack (with Load Distributing Hitch)
4 speed auto	1600 kg *	1600 kg *	2300 kg *

\* Without the Ford approved Tow Pack, the towing capacity is 500 kg.

STD Standard equipment  
OPT Optional at extra cost  
NCO No cost option  
N/A Not available

## Footnotes:

- (a) The Tow Packs are fitted to the vehicle by or for Ford and provide the specified towing capacities when used in accordance with the instructions in the Ford Owners Manual. Each Tow Pack consists of:
- Tow bar
  - Hitch and/or ballmount
  - Wiring harness with 'flat' 7-pin electrical connector
  - Towing turn signal flasher
  - Supplementary transmission cooler (automatic transmissions only)
- Note: Other items such as the caravan or trailer braking system, tow ball, safety chains, etc, are required for the attachment of a caravan or trailer to the towbar or hitch, are not supplied as part of the Tow Pack and must be purchased at extra cost or be supplied by the purchaser of the vehicle. An accessory towbar is also available from your Authorised Ford Dealer, fitting to be arranged by the purchaser. If the vehicle is to tow a gross weight of more than 500kg the appropriate Ford Approved Tow Pack must be fitted. Consult your Authorised Ford Dealer for the latest information with respect to the specifications and the availability of the accessory towbar.
- The actual towing capability and performance of a vehicle will depend on many factors including the suitability of the caravan, trailer, etc, the condition of the vehicle, the vehicle load, the vehicle specifications, weather conditions, road gradient, terrain and other prevailing conditions.
- (b) Consult the Ford colour selector or your Authorised Ford Dealer to determine which colours are available in the prestige paint range. Prestige paint is available at no extra cost.
- (c) Approximate kerb weight for Fairlane Ghia fitted with 4.0 litre MP EFI.
- (d) Available only in conjunction with a Touring Pack.
- (e) The Car Alarm is available as a dealer fitted option.
- (f) Power seat fitted to Fairlane Ghia - right hand driver bucket seat.

**About this specification sheet.** This sheet is designed to provide you with selected specification data for the Ford Products which have been described in a general way in the relevant brochure. Because of changes in conditions and circumstances Ford\* reserves the right, subject to all applicable laws, at any time, at its discretion, and without notice to discontinue or change the features, designs, materials, colours and other specifications and the prices of its products, and to either permanently or temporarily withdraw any such products from the market without incurring any liability to any prospective purchaser or purchaser.

Because of variations which occur in manufactured products, all capacities, measurements, dimensions and weights quoted in the relevant brochure and this specification sheet should be taken as approximate only.

Always consult an Authorised Ford Dealer for the latest information with respect to features, specifications, prices, optional equipment and availability before deciding to place an order.

\*FORD MOTOR COMPANY  
OF AUSTRALIA LIMITED  
(A.C.N. 004 116 223)  
Registered office:  
1735 SYDNEY ROAD,  
CAMPBELLFIELD, VICTORIA, 3061.

**HAVE YOU DRIVEN A FORD ... LATELY ?**

PRINTED FEBRUARY 1995

